

2018 Hyundai

ACCENT





2018 Hyundai ACCENT

Go ahead, judge the new Accent by its cover.

There's a reason every new Hyundai is backed by America's Best Warranty. It's because better drives everything we do. But to create the all-new Accent, we had to do more than simply build a better car. Your next car has to look better, too. And why not? Good design shouldn't cost extra. So we made an affordable sedan that looks like a million bucks. With its wider stance, optional 17" alloy wheels, expressive cascading grille and wraparound headlights and taillights, the 2018 Accent elevates the quality of design you can expect from a car in this class.

The upscale treatment begins the moment you approach your new Accent. The optional Proximity Key recognizes you and unlocks your door at the push of a button. Look closer, and you'll see Accent is available with amenities like a power sunroof, heated front seats and a hands-free smart trunk – features the 2017 Nissan Versa Sedan and Toyota Yaris iA don't offer at all! Safety? Accent steps up with advanced technologies like optional Forward Collision-Avoidance Assist.²

The Proximity Key gives Accent Limited push button start. Or there's another amazing way to get going with Blue Link,[®] Hyundai's award-winning connected car technology. Using Blue Link Remote Access, you can start your car and warm or cool its interior from the comfort of your kitchen or office.³

With innovation like this, is it any wonder that Hyundai has ranked #1 among all automotive brands in the Brand Keys Customer Loyalty Index – for eight years in a row?⁴





¹Claim based on comparison of specifications on manufacturer websites. ²Forward Collision-Avoidance Assist (FCA) is designed to assist drivers to avoid, or reduce the severity of, collisions with cars that have slowed or stopped in front of them. It is a supplemental assist and does not replace the need for extreme care and attention by the driver. FCA may not stop the vehicle completely and will not avoid all collisions. See your Owner's Manual for details. ³Requires an active Blue Link subscription and cellular coverage. Only use Blue Link and corresponding devices when safe to do so. ⁴Based on 2010, 2011, 2012, 2013, 2014, 2015, 2016 and 2017 Brand Keys Customer Loyalty Engagement Index[®].



¹Claims based on comparison of specifications on manufacturer websites. ²EPA estimate with 6-speed automatic transmission for comparison only. Mileage may vary. Your actual mileage will vary with options, driving conditions, driving habits and the vehicle's condition. ³Electronic Stability Control (ESC) cannot control your vehicle's stability under all driving situations. ESC is not a substitute for safe driving practices. No system, no matter how advanced, can overcome physics or correct poor driving. The driver is always responsible for controlling the vehicle and must use caution to avoid loss of control in all driving conditions. Speed, road conditions and driver steering input will affect whether ESC can help prevent loss of control. The Traction Control System is meant to enhance conscientious driving habits and is not a substitute for safe driving practices. See Owner's Manual for details. ⁴The Supplemental Restraint System (SRS) is designed to work with the 3-point seatbelt system. The SRS deploys in certain frontal and/or side-impact collisions where significant injury is likely. The SRS is not a substitute for seatbelts, which should be worn at all times. Children under the age of 13 should be restrained securely in the rear seat. NEVER place a rear-facing child seat in the front seat of a vehicle that has a passenger-side airbag.

ACCENT Limited in Pomegranate Red

Innovative Engineering

At Hyundai, we don't believe good is good enough.

To Hyundai engineers, adequate just isn't. And good enough? Well, it's never good enough. That's why the performance and safety features offered on the all-new Accent are beyond what you'd expect from a car in its class.

Take its eco-efficient 1.6L GDI 4-cylinder engine, for instance. It gives you more horsepower and more torque than the 2018 Toyota Yaris iA and Honda Fit LX CVT. Ditto the 2017 Ford Fiesta and Nissan Versa sedans.¹ To use that power efficiently, we equipped Accent with a crisp 6-speed manual transmission. You say you prefer an automatic? Accent's 6-speed automatic transmission offers a fluid precision that Toyota Yaris (with its 4-speed automatic), Honda Fit LX (CVT) and Nissan Versa sedan (CVT) simply can't match.¹ It's coupled with impressive fuel economy – up to an EPA-estimated 38 MPG on the highway.²

Prod the accelerator with your right foot, and you'll feel how smooth and solid it is over the road – with good reason. The 2018 Accent is composed of advanced high-strength steel and bonded with powerful aerospace adhesives that form a rigid, rattle-free body structure. This new body creates an ideal platform for our engineers to fine-tune Accent's suspension for a perfect balance of ride comfort and handling response.

And be sure to study the list of safety features, too. With optional Forward Collision-Avoidance Assist complementing standard Vehicle Stability Management and Electronic Stability Control with Traction Control,³ we've put the accent on advanced levels of driver assist technologies.



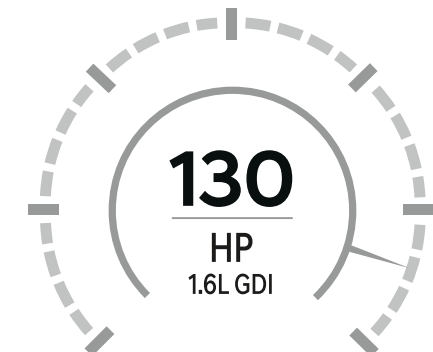
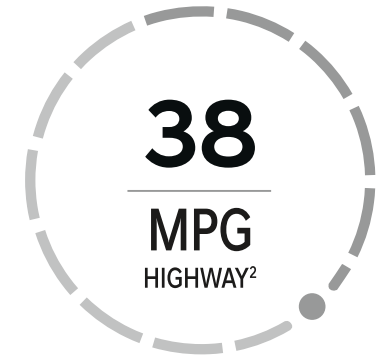
Discs At All 4 Corners On Accent SEL and Limited, 4-wheel disc brakes are standard. Cross shopping the competition? You won't find 4-wheel disc brakes offered on any Nissan Versa sedan, Ford Fiesta sedan, Chevy Sonic sedan, Toyota Yaris iA or Honda Fit.¹ To help you make the most of all that braking power, every Accent model includes standard Brake Assist.



Airbags All Around The numerous active safety features offered on Accent can help you avoid a collision. But if a collision should occur, it's good to know Accent also comes standard with 6 airbags: 2 advanced front airbags, 2 front-seat mounted side impact airbags and 2 front and rear side air curtains.⁴



Did You Bring Your Camera? It's not always easy to see what's behind you when backing into parking spaces or reversing out of driveways. We think it's better if you have a little help. So we gave Accent a standard rearview camera that tracks your movement and displays dynamic guidelines showing your intended path.





Intuitive Design

It's time you knew better.

It's here, inside the cabin, where the all-new Accent shows you what it's really made of. Like leather, for instance. Grip your hands around Accent Limited's leather-wrapped steering wheel and shift knob. You'll quickly grasp how they welcome you into a world that's surprisingly stylish and refined. Warm the heated front seat beneath you with a choice of three temperature levels. Select your preferred cabin climate with Accent's automatic temperature control...and you're ready to greet the road up ahead in relaxed comfort.

Start by tilting the steering wheel to your preferred driving position and adjusting the audio, phone and cruise controls using switches that are literally at your fingertips. Plug your smartphone into a USB charging port – Accent has them available in both the front and rear seating areas. Then familiarize yourself with Accent's optional 7" display audio touchscreen.¹ Apple CarPlay™ and Android Auto™ support allows you to access many of your smartphone's features and apps using voice commands or your dashboard's touchscreen.² It's also where you can tune in your favorite channels on SiriusXM® Satellite Radio.³

If all of that sounds like Accent is ready for your next road trip, you're right. Thanks to 60/40 split-folding rear seats, Accent lets you combine the storage capacity of its trunk with the interior space available behind the front seats. So what fits into your life...can also fit into your Accent.



Control Yourself It's easy to do, now that the 2018 Accent offers automatic temperature control for your comfort. Choose the setting you want, then turn your attention to more entertaining pursuits. It's the kind of feature typically found on more expensive sedans. And a far cry from basic air conditioning.



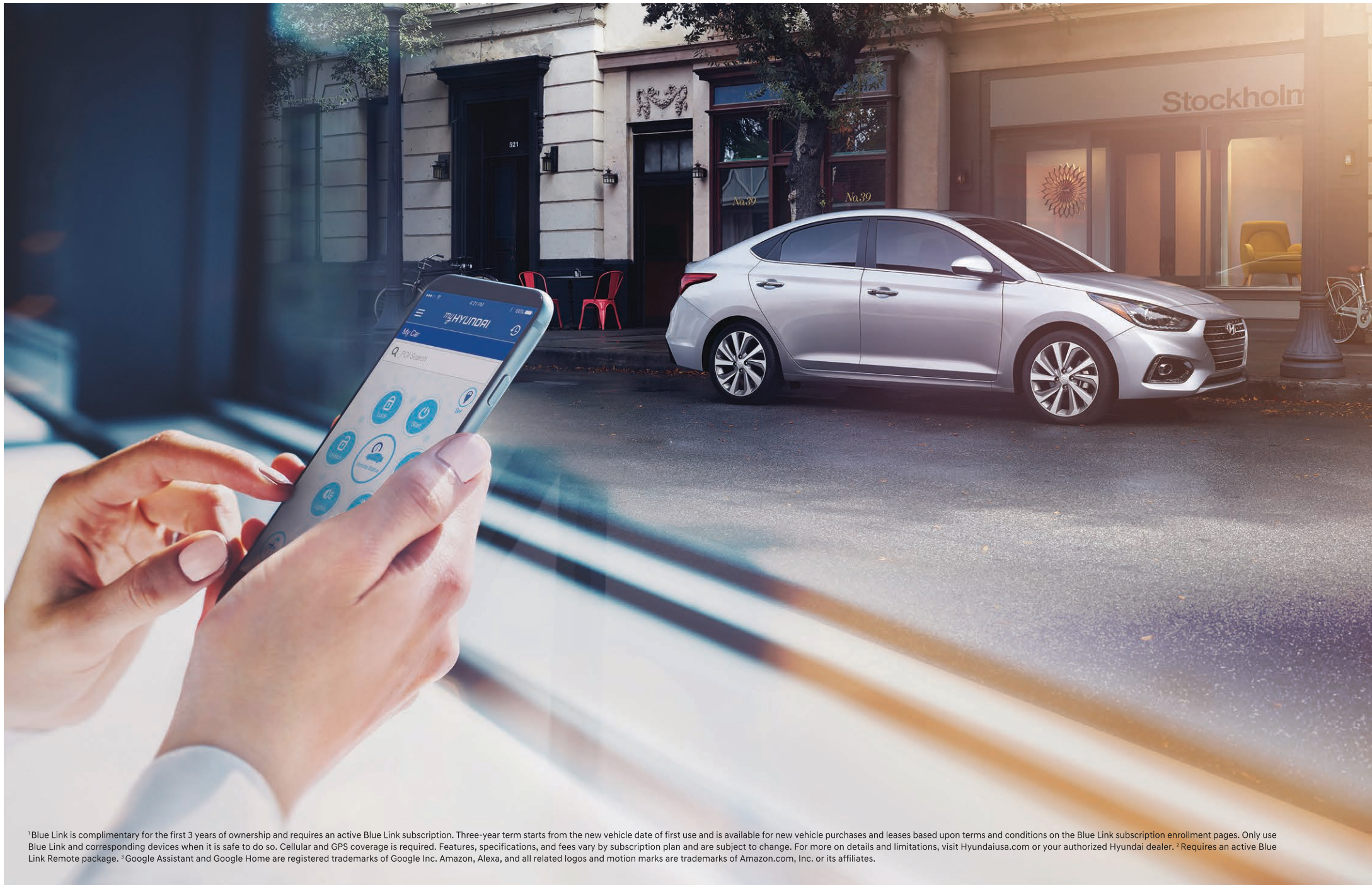
A Smarter Trunk Ever try to open your trunk with your hands full of boxes or bags? Well, Accent solves that dilemma with a smart trunk feature. It recognizes your Proximity Key when standing nearby, and pops open automatically. So you can unload whatever's in your hands without fumbling for your keys.⁴



Split Personality You'll be surprised by what you can load into your Accent with its versatile 60/40 split-folding rear seats. Fold one section flat, and you can load longer objects while still leaving room for a rear-seat passenger. Or fold both sections down to maximize your Accent's full cargo space.



¹Standard on Accent SEL and Limited. ²Not available on Accent SE. Apple CarPlay works with iPhone 5s, iPhone 5c, iPhone 5 and later models running the latest version of iOS 7 and above. Apple is a registered trademark of Apple Inc. Android Auto works with smartphones running on Android 5.0, Lollipop and higher. Android, Android Auto, Google Play and other marks are trademarks of Google Inc. ³Not available on Accent SE. All SiriusXM services require a subscription, sold separately by SiriusXM after the complimentary trial period. Fees and taxes apply. All fees and programming are subject to change. To cancel, please call 1-866-635-2349. See our Customer Agreement for complete terms at siriusxm.com. Sirius, XM, SiriusXM and all related marks and logos are trademarks of Sirius XM Radio Inc. ⁴Standard on Accent Limited. The smart trunk will open when the smart key is within 40 inches of the detection area for at least 3 seconds. Radio transmitters and other vehicle smart keys may interfere with normal operation of this feature. Please consult your Owner's Manual for details.



¹Blue Link is complimentary for the first 3 years of ownership and requires an active Blue Link subscription. Three-year term starts from the new vehicle date of first use and is available for new vehicle purchases and leases based upon terms and conditions on the Blue Link subscription enrollment pages. Only use Blue Link and corresponding devices when it is safe to do so. Cellular and GPS coverage is required. Features, specifications, and fees vary by subscription plan and are subject to change. For more on details and limitations, visit Hyundaiusa.com or your authorized Hyundai dealer. ²Requires an active Blue Link Remote package. ³Google Assistant and Google Home are registered trademarks of Google Inc. Amazon, Alexa, and all related logos and motion marks are trademarks of Amazon.com, Inc. or its affiliates.



Hyundai Blue Link®

What gives Accent owners a better connection to the things they need? Hyundai's award-winning Blue Link Connected Car System, now complimentary for the first 3 years of ownership. For details on all of the Blue Link features offered, visit HyundaiBlueLink.com.

Optional Blue Link Connected Car features include:

Connected Care

- Automatic Collision Notification
- Enhanced Roadside Assistance
- SOS Emergency Assistance
- Monthly Vehicle Health Reports
- Service Link
- On-Demand Diagnostics

Remote

- Remote Start with Climate Control
- Remote Door Lock/Unlock
- Remote Horn and Lights
- Car Finder
- Alarm Notification
- Stolen Vehicle Recovery
- Valet/Geo-Fence/Speed/Curfew Alerts

Connected Car Technologies

Seamlessly connect your life with your Hyundai? We've got an app for that.

Welcome to Blue Link®, a technology that transforms Accent into a vehicle unlike any you've ever owned! Blue Link Connected Care, free for the first 3 years of ownership, offers Enhanced Roadside Assistance and 24/7 SOS Emergency Assistance with Automatic Collision Notification that calls for help if you've been in an accident where an airbag has been deployed.

Teenager borrowing the car? Geo-Fence, Speed and Curfew Alert features let you rest easy by notifying you if the speeds, times or distances you set are exceeded. There's a Car Finder feature that lets you locate your Hyundai at crowded stadiums or shopping malls. And Monthly Vehicle Health Reports offer a convenient way to help ensure your Accent is in optimal condition. Scheduling a service appointment is just as easy using the touchscreen in your Hyundai or your MyHyundai smartphone app.

Speaking of our smartphone app, Blue Link Remote Access lets you start your car and warm or cool its interior while you're getting ready to leave. You can also download Blue Link for Apple Watch™ or Android Wear™ and start your engine or lock/unlock your Accent's doors from almost anywhere.² Blue Link makes life between your home, your workplace and your Hyundai seamless.

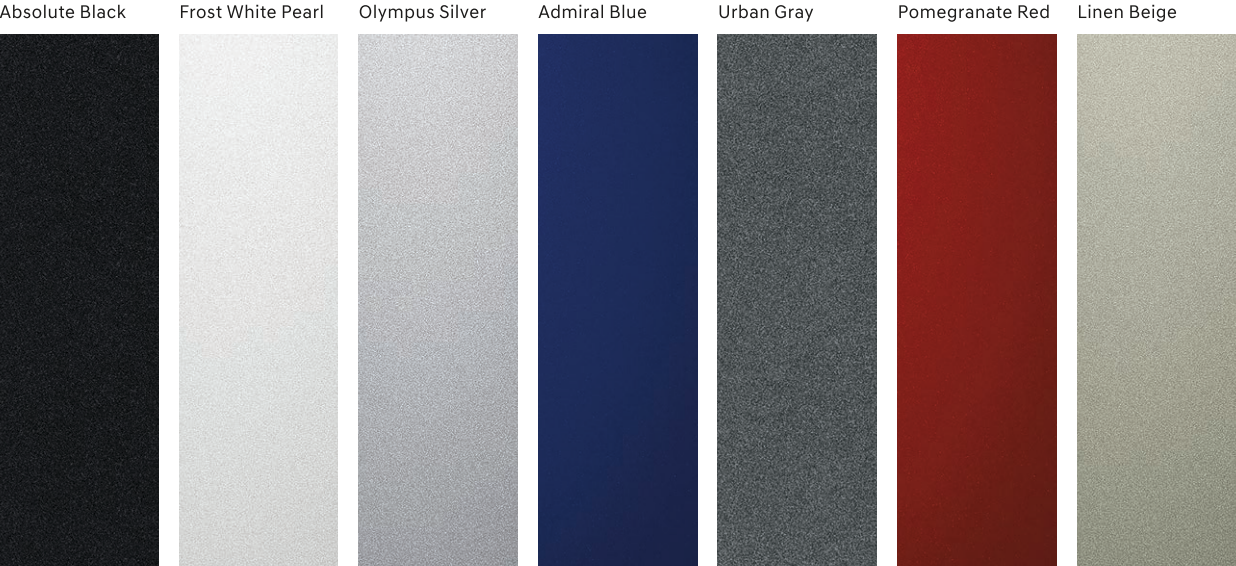


Voices Carry Our Blue Link Remote Access services also integrate with Amazon Alexa® and Google Assistant™ voice services. Now, you can talk to your Amazon Echo® or Google Home™ device and ask it to start your Accent's engine, unlock the doors and set the cabin temperature from the comfort of your couch, kitchen or bedroom.³

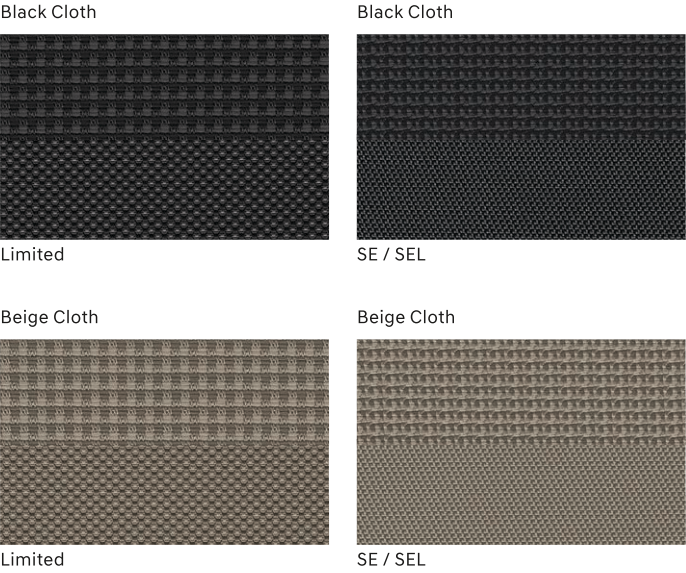


Smartphone Integration We get it: Your life basically runs on your smartphone. So like all new Hyundai vehicles, the 2018 Accent offers Apple CarPlay™ and Android Auto™ support, making it easy to place calls, send and receive messages, listen to music playlists and activate your phone's navigation using familiar touchscreen or voice commands.

Exterior Colors



Interior Colors





2018 ACCENT SE

Key Standard Features

- 130 hp, 1.6L Gasoline Direct Injection 4-cylinder engine
- 6-speed manual or optional 6-speed automatic transmission with SHIFTRONIC® manual controls
- 15" steel wheels with wheel covers and 185/65R15 tires
- Ventilated front disc brakes
- Insulated hood
- Bodycolor door handles and side mirrors
- 2-speed intermittent windshield wipers
- Rear window defroster with timer
- Roof-mounted antenna
- Power door locks and remote keyless entry with alarm
- One-touch triple turn signal
- Power windows and side mirrors
- Tilt steering wheel
- Trip computer
- 6-way adjustable driver seat including height adjustment
- Cabin air filter
- Cloth seating surfaces
- Cloth door inserts
- Front and rear door map pockets
- 60/40 split-folding rear seats
- Sliding sunvisors with vanity mirrors
- Maplights with sunglass holder
- 5" color touchscreen AM/FM audio system with 4 speakers
- Rearview camera with dynamic parking guidelines
- Smartphone/USB auxiliary input jacks
- Steering wheel audio and cruise controls
- Bluetooth® hands-free phone system
- 6-airbag safety: Front, side and head curtain airbags with Occupant Classification System
- Vehicle Stability Management
- Electronic Stability Control with Traction Control System
- Hillstart Assist Control (automatic transmission only)
- ABS with Electronic Brake-force Distribution and Brake Assist
- Temporary spare tire
- Tinted glass



2018 ACCENT SEL

SE A/T Standard Features plus:

- + 15" alloy wheels with 185/65R15 tires
- + Four-wheel disc brakes
- + 7" color touchscreen AM/FM/XM/MP3 audio system with 6 speakers
- + Android Auto™ support
- + Apple CarPlay™ support
- + Heated side mirrors with driver blind spot mirror
- + Automatic headlights
- + Front-passenger seatback pocket
- + Front and rear-seat USB charging ports
- + Center console storage with sliding cover
- + One-touch driver's auto-up window

Exterior Dimensions

	ACCENT
• Wheelbase	101.6 in
• Overall Length	172.6 in
• Overall Width (excluding mirrors)	68.1 in
• Coefficient of Drag	0.28 Cd
• Curb Weight, M/T – A/T	2,502 – 2,679 lbs
• Gross Vehicle Weight Rating, M/T – A/T	3,439 – 3,638 lbs

Interior Dimensions

	ACCENT
• Head Room, front/rear	38.9/37.3 in
• Leg Room, front/rear	42.1/33.5 in
• Shoulder Room, front/rear	54.2/53.7 in
• Hip Room, front/rear	51.7/50.8 in
• Passenger Volume	90.2 cu ft
• Cargo Volume	13.7 cu ft
• Total Volume	103.9 cu ft



2018 ACCENT Limited

SEL Standard Features plus:

- + Forward Collision-Avoidance Assist
- + 17" alloy wheels with 205/45R17 tires
- + Power tilt-and-slide sunroof
- + Projector headlights with LED Daytime Running Lights
- + LED taillights
- + Chrome beltline molding and exterior door handles
- + Chrome grille
- + Power side mirrors with turn signal indicators
- + Blue Link® Connected Car System
- + Heated front seats
- + Proximity Key entry with push button start
- + Hands-free smart trunk with auto open
- + Automatic temperature control with auto-defogger
- + 3.5" TFT information display
- + Leather-wrapped steering wheel and shift knob
- + Front foglights

Performance and EPA Mileage Estimates

City/Highway/Combined

	ACCENT
• Horsepower	130 HP
• Torque	119 lb-ft
• Manual Transmission	28/37/31 MPG
• Automatic Transmission	28/38/32 MPG
• Fuel Tank Capacity	11.9 gal

Wheels



15" Steel Wheel/SE



15" Alloy Wheel/SEL



17" Alloy Wheel/Limited



Hyundai Hope On Wheels®
Helping Kids Fight Cancer



Hope makes every Hyundai better.

Every time we sell a Hyundai, a portion goes to Hyundai Hope On Wheels® to help find a cure for childhood cancer. Over the last 19 years, Hyundai Hope On Wheels has donated more than \$130 million. Hope is our greatest feature. And it comes standard on every Hyundai. For more information, please visit HyundaiHopeOnWheels.org.

America's Best Warranty

Powertrain
Limited Warranty

10 years
100,000 miles

New Vehicle
Limited Warranty

5 years
60,000 miles

Anti-Perforation
Warranty

7 years
UNLIMITED miles

24/7 Roadside
Assistance

5 years
UNLIMITED miles

 **HYUNDAI**
Assurance
HYUNDAIASSURANCE.COM

Our commitment to Hyundai owners doesn't end with the transfer of keys. Wherever the road takes you, we've got your back with Hyundai Assurance, an umbrella of services and benefits that includes America's Best Warranty, 24/7 Roadside Assistance, innovative safety and car care features...and more.



See dealer for LIMITED WARRANTY details. Fuel economy estimated by EPA for comparison only. Mileage may vary. While the information contained in this brochure was correct at the time of printing, specifications and equipment can change. Feature comparisons based on competitor information available at the time of printing. No warranty or guarantee is being extended in this brochure, and Hyundai reserves the right to change product specifications and equipment at any time without incurring obligations. Some vehicles are shown with optional equipment. Specifications apply to U.S. vehicles only. Please contact your Hyundai dealer for current vehicle specifications. As part of Hyundai's commitment to a responsible environment, this brochure was printed using paper certified by the Forest Stewardship Council®. FSC® certification helps ensure that the highest social and environmental standards are met in the making of the paper we use, contributing to conservation, responsible management and community-level benefits for people near the forests.



©2017 HYUNDAI NP020 Q2018