



2012
CC



Das Auto.



What makes a Volkswagen a Volkswagen. See those little icons over there? They represent the big ideas that every Volkswagen must live up to in order to earn the VW badge. No matter how large or small, all models are a combination of these essential ideas. Find an icon and you'll discover something special about a Volkswagen. It's really that simple.

Let's talk Volkswagen.

Das Auto

A VW doesn't just start off as sheet metal and engine parts. It begins as an idea. A belief that getting the little things right is a big thing. A viewpoint that asks why dumb it down when you can smart it up. An attitude that says to make things perfect, you have to make them perfectly. Some would call these just a bunch of good ideas. We call them Das Auto.®

The CC

Some might say that a car this beautiful speaks for itself. And if it could, it would probably coax you inside to feel the optional supple leather bucket seats, or admire the touchscreen stereo system complete with Bluetooth® technology, or check out the multi-function steering wheel. Once you've climbed into the driver's seat, it would extol the virtues of its award-winning 2.0L TSI® turbocharged engine until you just had to take it out for a spin. And then, out on the open road, you'd discover the available sunroof and tilt it open to let in the breeze. After all, looks aren't everything, but in the case of the CC, its stunning good looks will open the door to the vast array of features it has to offer. And that's definitely something.



VR6 4MOTION Executive shown in Deep Black Metallic with 18" Thunder wheels



Design. To Volkswagen designers, sculpting a car as beautiful as the CC is reward enough. But apparently the judges didn't agree. Because they gave it three international design awards in its very first year. Okay, we admit it. That feels pretty good too.

It's what's on the outside that counts.

Designing a new car is a tall order. Not only does it have to be beautiful, but it also needs to be robust enough to triumph over everyday use if it's going to wear the VW badge. That's why everywhere you look, there are graceful lines and thoughtful details. We made the CC gorgeous so you'd covet it before you ever sat inside. And we added each and every feature so you would never want to give up the keys, even to the valet. Because we thought that a car we affectionately refer to as the Comfort Coupe (thanks to its luxurious interior and gently sloping roof) should live up to both its names.



VR6 4MOTION Executive shown in Reflex Silver Metallic



Design. Everyone knows that details add up. And since the goal of the CC was to fuse exceptional design with uncompromised engineering, every detail was not only thought about, it was also fussed over. A lot. And we think you'll appreciate it.

If you want to make something big, start small.

A. Rain-Sensing Windshield Wipers

Like a little mind reader, an invisible sensor in the windshield detects how much water is obstructing your vision, and the wipers adjust their speed automatically.

B. Power Glass Tilt Sunroof

Blur the lines between outside and in with the available tilt sunroof. It makes the great outdoors the ultimate addition to your ride.

C. Pinch Protection on Power Windows

If there's a set of unsuspecting fingers still feeling the breeze when the windows are closing, we help protect every single digit by including pinch protection on all power windows.

D. Frameless Doors

Because the doors on the CC have no window frame, the windows automatically adjust to make the doors easier to open, then seal upon closing to help reduce road noise and keep the road aerodynamics balanced.

E. Diversity Antenna

Some might call it overkill, we just call it smart. We put two radio antennas on your CC so the one with the stronger signal for any given channel rules the roost. That way you have the best reception possible, bar none.

F. Bi-Xenon™ Headlights with AFS

Brighter than halogen or regular filament bulbs, these special optional headlights with the Adaptive Front-lighting System turn up to 15 degrees around corners to help effectively see into the future.

G. Hydraulic Brake Assist (HBA)

Starting fast is nice. Stopping fast is a must. HBA recognizes how quickly the brakes are pressed and automatically kicks in the Anti-lock Braking System for maximum deceleration when needed.

H. Exterior Signal Mirrors

The CC has side mirrors with blinkers built right in. So every time you turn your signal on, everyone will know your next move.

I. Four-Corner Independent Suspension

Thanks to the sport-tuned multi-link suspension, and four wheels designed to individually respond and correct for any disturbances, your CC will give you mile after mile of firm, race-inspired handling.

J. Alloy Wheels

No matter which of the alloy wheels you're sporting, each one is designed to complement your CC. Take, for example, the available 18" polished Interlagos wheels pictured here. Their gently twisting helicopter design is sure to turn heads as you drive.





Technology. Do you see that? Not the badge, the tiny camera underneath it. Even though you'll be too busy driving to actually see it, that optional rearview camera will probably become one of your favorite features. Mostly because it'll help keep you from backing up into anything unexpected. Which was the whole point of showing it to you in the first place.



So much technology. So few buttons.

That's right, the state-of-the-art touchscreen entertainment system is incredibly easy to use. The Bluetooth hands-free calling system doesn't take an advanced degree to understand. The 12-way power front seats need just three buttons to fine-tune everything to your comfort. The analog clock requires nothing but the ability to tell time to use. The multi-function onboard computer, cruise control, and available Dynaudio® stereo with 10 high-end speakers are all right there in front of you. And the stereo with crystal-clear HD Radio technology even comes with a three-month trial subscription to Sirius® Satellite Radio with over 130 channels. So if you're feeling cold but your passenger is too warm, no big deal. The available Climatronic® climate control system can create two temperature zones. And if you're prone to getting lost, don't worry. With the optional touchscreen navigation systems, you'll always find your way home. Plus, with the top-of-the-line navigation system, you'll be able to avoid traffic thanks to continuously updated traffic information during the three-month trial subscription to Sirius Traffic.™ Relax. We made all the technology in the CC easy for a reason. So you'll enjoy using it.



Lux Limited in Cornsilk Beige Two-Tone V-Tex leatherette



Lux shown in Cornsilk Beige Two-Tone V-TEX leatherette



Comfort. We could simply tell you all about the gorgeous bucket seats. Or the available supple Nappa leather. Let's not forget the optional genuine wood interior trim. Perhaps we should also point out the nifty cupholders in the backseat. How about the 60/40-split seat that connects the trunk to the cabin for those extra large items? In the interest of comfort, we should probably mention them all. Hope you don't mind.

This car has a secret.

But we don't think you'll realize it at first. Because the secret lies in what isn't there as opposed to what is. In a moment of inspiration, we removed that hard seat-like spot in the back between the two window seats. The spot that no one actually wants to sit in. And then we split that precious space between two gorgeous bucket seats, giving them extra elbow room. And legroom. Because the CC isn't about cramming people in for a weekend road trip. It's about taking three really good friends on the ride of their lives.



VR6 4MOTION Executive shown in Reflex Silver Metallic



Performance. The CC takes a very pretty picture. So pretty that you might overlook a few of its details. Like the award-winning 2.0L TSI turbocharged engine. You know, the one that hums along and gives you that turbo punch that you can't help but love. Well, that comes standard in the CC. Along with a whole bunch of other amazing features. You wouldn't want to love the CC on looks alone, would you?

Turbo. Gift with purchase.

The CC starts with a turbocharged engine. That's right, it's standard. This 4-cylinder engine has 200 hp and is paired with either a 6-speed manual or a 6-speed DSG[®] automatic performance transmission with Tiptronic[®]. The engine is also equipped with FSI[®] direct injection that offers a fuel savings of up to 25 percent* in comparison to conventional injection engines. If you're craving more power, we suggest one of the fastest and most powerful Volkswagen engines available: the 3.6L VR6 with 280 hp and 265 lbs/ft of torque. It comes with 4MOTION[®] all-wheel drive, sport-tuned suspension and super-sleek paddle shifters. No matter which engine you choose, both turn your attention away from the gorgeous design and direct it all toward the gas pedal.

*EPA estimates. Your mileage will vary.



VR6 4MOTION Executive shown in Reflex Silver Metallic



Safety. There's safe. And then there's Volkswagen safe. Safe protects you from all kinds of life's little (and big) surprises. Volkswagen safe means every CC comes standard with Continental's mobility tires with ContiSeal™ technology, which helps seal tread punctures and prevent the loss of air pressure even when your tire is compromised. Safe is what every car should be. Volkswagen safe is what every car wishes it were. When it comes to safety, picking the car that wins awards is always a safe bet.

Our success is no accident.

When you buy a Volkswagen like the CC, you're driving home more than just a car. You're taking home total peace of mind. You don't even have to think about how its doors thunk solidly into place. Or how it has six airbags standing guard*. Or especially how the crash-optimized front end would help absorb energy on impact and help protect you in the event of a collision. That's because every Volkswagen is built to the highest standards. Volkswagen standards. Standards so high that we included Electronic Stability Control (ESC), Anti-lock Braking System (ABS), and Hydraulic Brake Assist (HBA) on every VW model to help you stay safe in every situation. Because we believe that once you've achieved a certain level of excellence, there's no going back. That's why we call it a standard.

*Airbags are supplemental restraints only and will not deploy under all crash circumstances. Always use safety belts and seat children only in the rear, using restraint systems appropriate for their size and age.



Quality. Laser seam welding. Sure, it sounds cool. But what does it mean? Well, it's kind of like the difference between a jacket with buttons and one with a zipper. The buttons keep the jacket on, but they still leave spaces in between. Whereas a zipper seals the deal, leaves no spaces, and therefore creates a much stronger bond. When it comes to increased control, stability, and safety in every situation, thanks to laser seam welding, we've got the situation all zipped up.



Buy one, get three.

Yes, you read that right. When you buy any new VW, you get three years or 36,000 miles of no-charge scheduled Carefree Maintenance.* That's your first three years of scheduled maintenance at no extra charge. If you'd like, stop by in the first 90 days, or 6,000 miles, for your courtesy vehicle check. Ask us any questions you might have while we give your CC a basic checkup. On the house. After that, come by every year, or 10,000 miles, for your remaining scheduled maintenance checks. It's really that simple. So relax and enjoy every carefree mile in your new VW. That's what it's there for. Keeping it like new, well, that's what we're here for. And because it's a Volkswagen, it'll keep that new car feeling for many years to come. If only everything in life could be this carefree.

*The Volkswagen Carefree Maintenance Program covers the vehicle's scheduled maintenance for three years or 36,000 miles, whichever comes first. Coverage during the term of the new vehicle limited warranty at no additional charge. Some limitations apply. See dealer or vehicle maintenance program booklet for details.



VR6 4MOTION Executive shown in Reflex Silver Metallic



A. Smarter Paint

In order to increase the quality of paint on your new VW, we combined the primer and basecoat into a single thick coat to remove one step of the process. Not only does this create a better finish, it also helps reduce CO₂ emissions by almost 20 percent.

B. Community Bridge

Not only is the bridge that connects the Volkswagen Academy to the main production facility visually stunning, it was also designed by a group of architecture students from Auburn University who won our design competition. This competition was part of the \$5.28 million investment we're making in schools and universities in the surrounding community.

C. Monsoon Testing

Every new VW built in the Chattanooga facility undergoes a six-minute "monsoon" water test to check for any leaks. Drenching the car in such a deluge of water helps us ensure that each new VW will withstand just about anything that nature rains down upon it.

D. Precision Manufacturing

When we build the sheet metal for our cars, we stamp it so precisely that the typical gap between metal sheets is between 3 and 4 mm. Then we use our special chalk test to find any imperfections that can't be seen by the naked eye.

Volkswagen Academy

In order to enable our employees to meet our high quality standards, we partnered with the state of Tennessee to build the Volkswagen Academy. We then hired the best team of trainers to ensure that we have the most talented group of plant technicians anywhere.

Recycled Land

Our state-of-the-art, eco-conscious manufacturing facility stands on land that is ideal for environmental renewal. As we build, we're relocating and restoring creeks to help manage storm runoff, and we're replanting any trees that have been cut down.



To help us ensure the highest-quality production for our cars, our employees help program each state-of-the-art robot to perform its specific task so the robots can assist during the production and assembly process.



Next. It's one thing to be building a brand-new manufacturing plant in the U.S. But it's another thing to be doing it right. That's why we're developing our new facility according to the LEED Certification standards. Doesn't a pristine new building deserve the very best that green technology has to offer? Of course. And so do all the people who live in the community.

At home in America.

From its advanced laser seam welding process that helps give our cars stability and strength, to the six-minute monsoon water test to check for any sign of leaks, the brand-new Chattanooga, TN, manufacturing plant is state of the art. And those are just a couple of the benefits of starting from scratch. When you build something from the ground up, you can control every element of the process—from the building materials, to the quality of the people working on every step of development, to the world-class cars that emerge at the end of the line. It also gives us the opportunity to expand our network to include local suppliers, making sure to let them know about our standards so they can deliver the high-quality product we require. The way we look at it, this is not only the most eco-conscious and modern plant in the VW portfolio, it's also an investment in our collective future. So here's to building positive momentum. Together.

Trim

Sport Includes: 2.0L, 200-hp, TSI® engine; 17" Phoenix alloy wheels; all-season self-sealing tires; 4-corner independent sport suspension; Climatic manual climate control; leather-wrapped, multi-function steering wheel; analog clock; heated 12-way power front seats with 4-way power lumbar; touchscreen Premium VIII sound system with HD Radio, 8 speakers, MP3- and WMA-compatible 6-disc CD changer, SD memory card reader, AUX-in for portable audio players, and Sirius® Satellite Radio with 3-month trial subscription; Bluetooth®; Media Device Interface (MDI) with iPod® cable; automatic headlights with Coming Home feature; automatic rain-sensing wipers; self-dimming rearview mirror; V-Tex leatherette seating surfaces; matte chrome interior trim; foldable rear armrest with pass-through storage and 2 cupholders; 6-speed manual transmission; Electronic Stability Control (ESC); Anti-lock Braking System (ABS) with front and rear disc brakes; Anti-Slip Regulation (ASR); Tire Pressure Monitoring System (TPMS).

R-Line Includes Sport features, plus: 18" Mallory alloy wheels; lower extended sport bumpers and side skirts; R-Line door sill plates; darkened taillights; halogen reflector lens foglights.

Lux Includes Sport features, plus: 18" Daytona alloy wheels; Climatronic® dual-zone automatic climate control; halogen reflector lens foglights; full genuine brushed aluminum interior trim; RNS 315 navigation system with 5" color touchscreen in console; heated windshield washer nozzles; 6-speed DSG® automatic transmission with Tiptronic® and Sport mode.

Lux Plus Includes Lux features, plus: ambient interior lighting; sun visors with integrated Homelink® garage door opener; power tinted-glass sunroof with tilt function; genuine wood interior trim; RNS 510 navigation system with 6.5" color touchscreen in center console, 30GB hard disk, rearview camera, and Sirius Traffic™ with 3-month trial subscriptions.

Lux Limited Includes Lux Plus features, plus: 18" Interlagos alloy wheels with all-season tires; Bi-Xenon™ high-intensity headlights with Adaptive Front-lighting System (AFS), directionally adjustable.

VR6 4MOTION® Executive Includes Lux Limited features, plus: 3.6L, 280-hp, VR6 engine; 4MOTION all-wheel drive; 6-speed automatic transmission; 18" polished Interlagos alloy wheels; Tiptronic paddle shifters on leather-wrapped multi-function steering wheel; leather seating surfaces; front sport seats with active ventilation control; memory seating and mirrors; premium color multi-function trip computer; Park Distance Control with front and rear proximity sensors; Dynaudio® Premium Sound System; power rear sunshade; headlight washer system.

Standard/Accessory Wheels



Standard Sport – 17" Phoenix



Standard R-Line – 18" Mallory



Standard Lux, Lux Plus – 18" Daytona



Standard Lux Limited – 18" Interlagos



Standard VR6 4MOTION Executive – 18" Polished Interlagos



Accessory – 18" Thunder



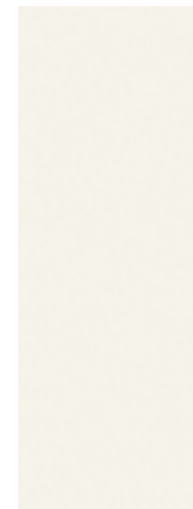
Accessory – 19" Sagitta



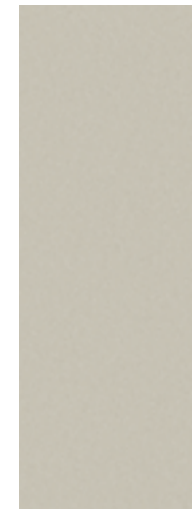
Accessory – 19" Motorsport

Exterior

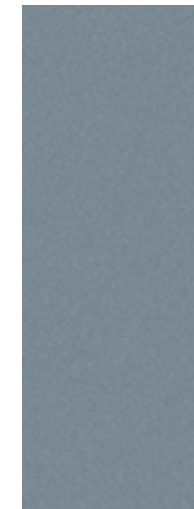
Candy White



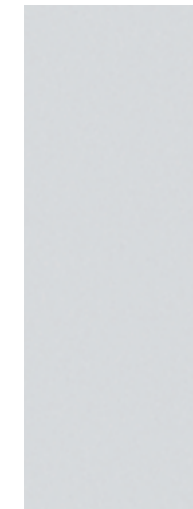
White Gold Metallic



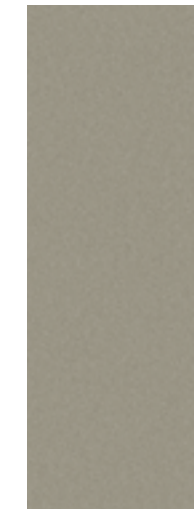
Iron Gray Metallic



Reflex Silver Metallic



Light Brown Metallic



Urano Gray



Night Blue Metallic



Deep Black Metallic



Interior

V-Tex Leatherette



Black

Leather



Black



Corn silk Beige Two-Tone

Specs

Design	Sport	R-Line	Lux	4MOTION
Tinted glass	●	●	●	●
Halogen headlights with clear, lightweight, chip-resistant polycarbonate lenses and Daytime Running Lights (DRL)	●	●	L, LP	–
Bi-Xenon™ high-intensity headlights with DRL and Adaptive Front-lighting System (AFS), directionally adjustable	–	–	LL	●
Halogen reflector lens foglights, integrated into front bumper	–	●	●	●
Power-operated side mirrors with integrated turn signals	●	●	●	–
Power-operated, heated side mirrors, with integrated turn signals and memory	–	–	–	●
Power tinted-glass sunroof with tilt function	–	–	LP	●
Park Distance Control (PDC) system, with front and rear proximity sensors	–	–	–	●
R-Line unique body kit, 18" Mallory wheels, darkened taillights, door sill plates and badging	–	●	–	–
17" alloy wheels with anti-theft wheel locks	●	–	–	–
18" alloy wheels with anti-theft wheel locks	–	●	●	●
Rain-sensing windshield wipers	●	●	●	●
Heated windshield washer nozzles	–	–	●	●

Performance	Sport	R-Line	Lux	4MOTION
2.0L TSI, 16-valve, DOHC, in-line 4-cylinder turbocharged engine with intercooler and FSI® direct injection; 200 hp, 207 lbs/ft of torque	●	●	●	–
3.6L, 24-valve, DOHC, narrow-angle V6 with FSI direct injection; 280 hp, 265 lbs/ft of torque	–	–	–	●
4MOTION all-wheel-drive system	–	–	–	●
Power-assisted, front vented disc brakes; rear solid disc brakes	●	●	●	●
Electric parking brake with Auto-Hold start-off assistance	●	●	●	●
Electromechanical power steering system with variable assistance	●	●	●	●
Sport suspension with independent front MacPherson struts and rear fully independent 4-link suspension	●	●	●	●
6-speed manual transmission	●	●	–	–
6-speed DSG automatic transmission with Tiptronic and Sport mode	○	○	●	–
6-speed automatic transmission with Tiptronic and Sport mode	–	–	–	●

Technology	Sport	R-Line	Lux	4MOTION
Touchscreen Premium VIII sound system with MP3- and WMA-compatible in-dash 6-disc CD changer, SD memory card reader, 8 speakers	●	●	–	–
Media Device Interface with iPod® cable; AUX-in for portable audio player	●	●	●	●
Bluetooth hands-free calling system	●	●	●	●
Sirius Satellite Radio 3-month trial subscription	●	●	●	●
RNS 315 navigation system with 5" color touchscreen in center console and SD memory card reader	–	–	L	–
RNS 510 navigation system with 6.5" color touchscreen in center console, Sirius Traffic with 3-month trial subscription, SD memory card reader, 30GB hard disk, and rearview camera	–	–	LP, LL	●
Dynaudio premium sound system, with 10 high-end speakers (4 tweeters, 2 midrange, 4 woofers) and 600-watt amplifier	–	–	–	●

Comfort	Sport	R-Line	Lux	4MOTION
Analog clock	●	●	●	●
Climatic manual single-zone climate control with pollen filter	●	●	–	–
Climatronic dual-zone electronic climate control with pollen filter	–	–	●	●
Multi-function trip computer featuring compass, trip time, trip length, average trip speed, average trip fuel consumption, current fuel consumption, miles to empty, radio station display, and personalizing function	●	●	●	●
Premium color multi-function trip computer display	–	–	–	●
2 radio-frequency remote transmitter key fobs with lock, unlock, rear trunk release, panic button, and selectable access valet key feature	●	●	●	●
Interior ambient lighting	–	–	LP, LL	●

Comfort cont.	Sport	R-Line	Lux	4MOTION
Dual front and dual rear reading lights, illuminated glovebox, luggage compartment lighting	●	●	●	●
Automatic locking feature (doors lock when vehicle reaches 8 mph)	●	●	●	●
Driver and front passenger visor vanity mirrors, illuminated and with covers	●	●	●	●
Self-dimming rearview mirror with on/off switch	●	●	●	●
Metallic-look matte chrome interior trim	●	●	–	–
Full brushed aluminum interior trim	–	–	L	–
Genuine wood interior trim	–	–	LP, LL	●
12-way power-adjustable front sport seats with 4-way power lumbar support	●	●	●	●
12-way power-adjustable front sport seats with 4-way power lumbar support and 3-position memory function for driver's seat and side mirrors	–	–	–	●
Heated front seats	●	●	●	●
3-spoke leather-wrapped multi-function steering wheel, height-adjustable with telescopic steering column	●	●	●	●
Steering-wheel-mounted Tiptronic paddle shifters	–	–	–	●
Center front armrest with integrated storage box	●	●	●	●
Rear center console with storage compartment	●	●	●	●
4 cupholders, 2 front and 2 rear	●	●	●	●
Glovebox, lockable and illuminated, with adjustable cooling feature	●	●	●	●
Fully upholstered luggage compartment	●	●	●	●
V-TEX leatherette seating surfaces	●	●	●	–
Leather seating surfaces	–	–	–	●
Power windows with pinch protection; front windows with automatic 1-touch feature, operable from driver's side only	●	●	●	●

Safety	Sport	R-Line	Lux	4MOTION
Anti-theft vehicle alarm system with audible and visual activation	●	●	●	●
Immobilizer III theft-deterrent system	●	●	●	●
Driver and passenger front and side thorax airbag supplemental restraint system*	●	●	●	●
Side Curtain Protection® head airbags, front and rear*	●	●	●	●
All-season self-sealing tires	●	●	●	●
3-point safety belts for all 4 seating positions; belt-force limiters for all 4 seats and belt tensioners for front seats	●	●	●	●
LATCH (Lower Anchors and Tethers for CHildren) child seat anchor points	●	●	●	●
Electronic Stability Control (ESC), Anti-Slip Regulation (ASR), Electronic Differential Lock (EDL), and Engine Braking Assist (EBA)	●	●	●	●
Anti-lock Braking System (ABS), Electronic Brake-pressure Distribution (EBD), Hydraulic Brake Assist (HBA), and brake disc wipe feature	●	●	●	●
Intelligent Crash Response System (ICRS)	●	●	●	●
Tire Pressure Monitoring System (TPMS)	●	●	●	●

Quality	Sport	R-Line	Lux	4MOTION
12-year/unlimited mileage Limited Warranty Against Corrosion Perforation	●	●	●	●
5-year/60,000-mile (whichever occurs first) Powertrain Limited Warranty	●	●	●	●
3-year/36,000-mile (whichever occurs first) New Vehicle Limited Warranty	●	●	●	●
3-year/36,000-mile (whichever occurs first) Roadside Assistance**	●	●	●	●
Volkswagen Carefree Maintenance™ Program†	●	●	●	●

Dimensions	
Wheelbase	106.7 inches (2,710 mm)
Front track	61.2 inches (1,553 mm)
Rear track	61.3 inches (1,557 mm)
Length	188.9 inches (4,796 mm)
Width	73.1 inches (1,856 mm)
Height	56.0 inches (1,422 mm)
Ground clearance	4.6 inches (116 mm)

Accessories

drivergear.vw.com



Base Carrier Bars with Ski/Snowboard Attachment



Base Carrier Bars with Bike Holder Attachment



Base Carrier Bars with Kayak Holder



Heavy Duty Trunk Liner with CarGo™ Organizer Blocks



Splash Guards



Rear Chrome Accent



Monster Mats®



Variety of MDI Cables for Digital Playback Devices (iPod is not included)



Pedal Caps

● Standard, at no additional cost ○ Optional, additional cost L (Lux) LP (Lux Plus) LL (Lux Limited) – Not Available

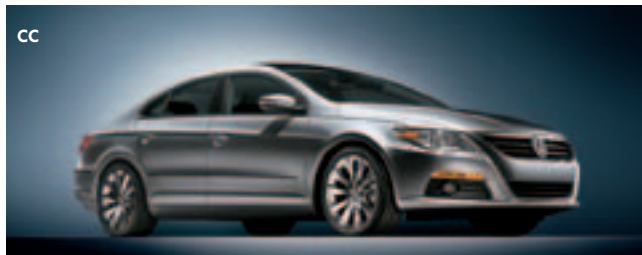
*Airbags are supplemental restraints only and will not deploy under all crash circumstances. Always use safety belts and seat children only in the rear, using restraint systems appropriate for their size and age. **Roadside Assistance provided by Signature Motor Club, Inc. and Signature Motor Club of California, Inc. †The Volkswagen Carefree Maintenance Program covers the vehicle's scheduled maintenance for three years or 36,000 miles, whichever comes first. Coverage during the term of the new vehicle limited warranty at no additional charge. Some limitations apply. See dealer or vehicle maintenance program booklet for details.

®iPod is a registered trademark of Apple, Inc. All rights reserved.

GTI



CC



Tiguan



Golf



Jetta



Routan



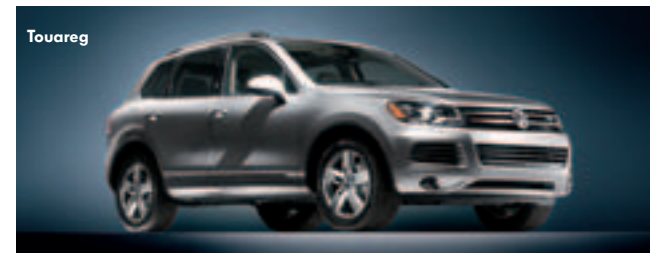
New Eos



Jetta SportWagen



Touareg



The VW of today is completely different from the VW you might know. We have a wide range of models, including world-class sedans, SUVs, and a minivan, each one more stylish and refined than ever before. And even though we've grown, rest assured that every VW still provides the exhilarating driving experience that has always been at the core of our reputation. Some things will never change.

Yes, that's recycled paper you're holding.

vw.com

©2011 Volkswagen of America, Inc. Printed in the U.S.A. Volkswagen of America, Inc., believes the specifications in this brochure to be correct at the time of printing. Specifications, standard equipment, options, fabrics and colors are subject to change without notice. Some features may be unavailable when your vehicle is built. Some vehicles are pictured with options that may be available at extra cost or may not be available on some models. Ask your dealer about availability of options and verify that the vehicle you ordered includes the equipment you ordered. Tires are supplied and warranted by their manufacturer. "Volkswagen," the Volkswagen logo, "Das Auto," "CC," "TSI," "DSG," "4MOTION," and "Climatronic" are registered trademarks of Volkswagen AG. "Carefree Maintenance" is a trademark and the Carefree Maintenance logo and "Side Curtain Protection" are registered trademarks of Volkswagen Group of America, Inc. "iPod" is a registered trademark of Apple Inc. All rights reserved. iPod is not included. "Bi-Xenon" is a trademark of Hella, Inc. U.S.A. "Tiptronic" is a registered trademark of Dr. Ing. h.c. F. Porsche AG. "FSI" is a registered trademark of Audi AG. "Bluetooth" is a registered trademark of Bluetooth SIG, Inc. "Dynaudio" is a registered trademark of Continental Audio Electronic GmbH. "HomeLink" is a registered trademark of Prince Corporation, Holland, Michigan. Prince is a wholly owned subsidiary of Johnson Controls. "ContiSeal" is a registered trademark of Continental AG. ©2011 Sirius XM Radio Inc. "Sirius," "XM" and all related marks and logos are trademarks of Sirius XM Radio Inc. and its subsidiaries. **Sirius Services:** Sirius Radio and Sirius Traffic require subscriptions, sold separately or as a package after trial period. Other fees and taxes will apply. Subscriptions governed by Sirius Terms and Conditions available at sirius.com. **If you decide to continue your Sirius service at the end of your complimentary trial, the self-paid plan you choose will automatically renew and bill at then-current rates unless you call 1-888-539-7474 to cancel.** Sirius U.S. satellite service available only to those at least 18 years of age in the 48 contiguous United States, D.C., and Puerto Rico (with coverage limitations). Volkswagen DVD navigation depends on the signals from the worldwide Global Positioning Satellite network. The vehicle's electrical system, and existing wireless and satellite technologies, must be available and operating properly for the system to function. The system is designed to provide you with suggested routes to location addresses, destinations, and other points of interest. Changes in street names, construction zones, traffic flow, points of interest, and other road system changes are beyond the control of Volkswagen of America, Inc. Complete detailed mapping of lanes, roads, streets, toll roads, highways, etc., is not possible, therefore you may encounter discrepancies between the mapping and your actual location. Please rely on your individual judgment in determining whether or not to follow a suggested navigation route. Periodically, the mapping is updated and a new DVD will be required in order to maintain the latest navigation information available to us. These will be available for purchase from time to time at additional cost. For further information regarding any Volkswagen model, please call 1-800-DRIVE-VW, or just look us up at vw.com. W12CCSBS



That's Das Auto.

