

# 2012 Tiguan



Das Auto.







## Better engineering for you.

German engineering isn't just about creating a faster car. Or a tighter ride. Or even the most fuel-efficient engine. We're not merely designing the sleekest silhouette. Or the roomiest cargo space. Or the most breathtaking sunroof. And even though we place safety at the top of our list, we're not in this solely to get recognition for our success. Or to break records. Or to add extra safety features just to be safe. At Volkswagen, we're about all of these things happening together, beautifully and precisely, to create a car that's actually fun to drive. Because we're not just making any car, we're making your car. That's the power of German engineering.



## The 2012 Tiguan

### The new face of performance.

What's the best way to describe the perfect amount of space and comfort, the power of a sport-tuned engine, and the renowned Volkswagen safety, all complemented by a gorgeous new exterior? In a word, balanced. Introducing the new 2012 Tiguan. Refreshed inside and out, it features a redesigned grille and updated headlights, restyled taillights, new high-quality cloth seating surfaces, and improved fuel efficiency, all of which make it stand out more than ever. Of course, the Tiguan still blasts down the road with its 200-hp turbocharged engine and available 4MOTION® all-wheel drive, so it can effortlessly adapt to any environment. That's the key to its charm. It's designed to fit into your versatile life, and a compact parking space, perfectly.





## Performance

### Getting there is more than half the fun.

Inspired by our belief that the journey is just as important as the destination, the 2012 Tiguan delivers a memorable driving experience every time you get behind the available leather-wrapped, multi-function steering wheel. That's because while the Tiguan is all compact SUV on the outside, under its hood beats the heart of a sports car. A GTI to be exact. Powered by the 2.0L turbocharged engine with 200 horsepower and 207 lbs/ft of torque, the Tiguan takes you from zero to 60 in 7.9 seconds while getting a better-than-ever 27 highway mpg. It's the type of power you'll appreciate whenever you have to get on a busy freeway, and fuel efficiency you'll notice every time you drive past the filling station.

Every Tiguan comes with FSI® direct injection technology that precisely sends atomized fuel into the combustion chamber of each cylinder. What does that all mean? Well, it makes the engine 25% more efficient than conventional injection engines. And that equals lower emissions and more power. It also gives you a few more victory laps around the city before you stop for gas.

\*Optional towing package required. \*\*Feature available on select models. †2012 2.0L TSI, automatic transmission: 22 city/27 highway mpg EPA estimates. 453 miles per tank. Range based on 27 highway mpg EPA estimate and a 16.8-gallon tank. Your mileage will vary.

4-corner independent suspension  
2,200 lbs. towing capacity\*  
4MOTION all-wheel drive\*\*  
6-speed automatic with Tiptronic\*\*\*

# 2.0L TSI

T is for Turbo.

200 horsepower

207 lbs/ft torque

Mileage

**27** highway miles  
per gallon†

Travel

**453** miles per  
tank†



SEL shown in Pepper Gray





SEL shown in Sandstone leather

## Versatility

---

56.1 cubic feet of available cargo space

Fold-flat front passenger seat

40/20/40-split folding rear seats

---



### It packs a wallop. And a lot of other stuff.

Yes, technically, it's a compact SUV. But a quick look inside shows that the Tiguan has a lot more than meets the eye. For starters, there's the 40/20/40-split folding rear seat, offering six different configurations for maximum flexibility and cargo space. Plus, the rear seats slide forward and back, just in case you need more room in the trunk. There are even hooks in back that you can use to tie down anything you put in the trunk to keep it from sliding around, which is good for your stuff and for your safety. And there's even a 12-volt power outlet that you can use to plug something in when you're on the move.



---

**40/20/40-split folding rear seats.** Most SUVs come with a 60/40-split rear seat. Then again, the Tiguan isn't just any SUV. So we gave it a 40/20/40-split folding rear seat that creates a generous 56.1 cubic feet of cargo space with the rear seats folded down flat. Of course, you can fold one seat back up if your cargo happens to be a couple of skiers. Or, you can fold them both back up and leave the middle folded down—and still have plenty of room for three skiers and their skis.



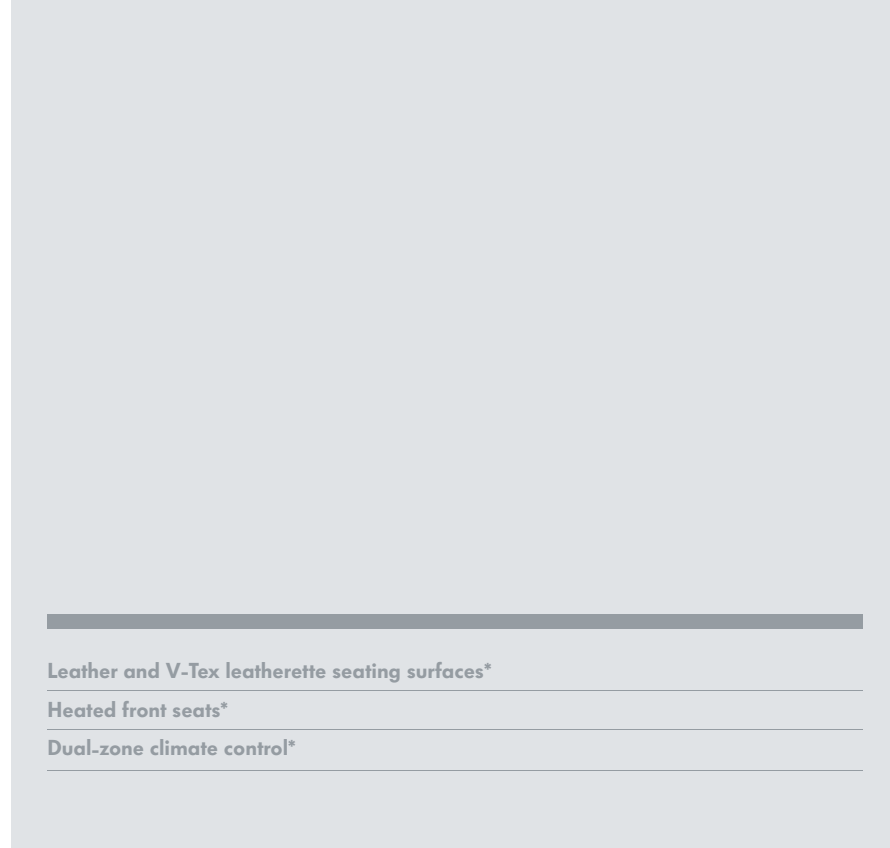
## Comfort

### Climb inside your comfort zone.

The Tiguan doesn't just take you to your happy place, it is your happy place. From the moment you slip into the available premium 12-way adjustable power driver's seat, you can't help but notice the airy roominess and refined craftsmanship that surrounds you. From the available leather seats and huge panoramic sunroof to the soft-touch materials throughout, the Tiguan's cabin is a study in upscale sophistication and comfort. One that's not only pleasing to the eye, but to the legs, backs, and rear ends of up to five adult passengers as well.

**Panoramic sunroof.** There are sunroofs and then there's the Tiguan's jaw-droppingly huge available power-sliding panoramic sunroof. At 12.7 square feet, it lets in three times more fresh air and sunlight than the average sunroof, so there's never an un-sundrenched seat in the house. Let the blue-sky gazing begin.

\*Feature available on select models.







SEL shown in Reflex Silver Metallic

## Design

- Roof rails\*
- 19-inch Savannah alloy wheels\*
- Power-adjustable heated side view mirrors



### Designed to turn heads. Built to perform.

With its turbocharged engine and sporty design, the Tiguan has always turned heads in a hurry. So rather than mess with a good thing, we simply updated it. First, we redesigned the chrome grille and framed it between a pair of assertive headlights accented with available Bi-Xenon™ headlights with LED Daytime Running Lights, giving it a modern and sleek look. Then, we restyled the taillights by incorporating a striking “double L” pattern into the design. And to complete its sporty look, the Tiguan now features available factory-installed 19-inch Savannah alloy wheels, so no matter where your journey takes you, you’re sure to arrive at your destination in style.



**Bi-Xenon headlights with Adaptive Front-lighting System (AFS).** Brighter than halogen or regular filament bulbs, the available special headlights with AFS turn up to 15 degrees around corners, effectively seeing into the future.

**LED Daytime Running Lights.** These special Daytime Running Lights use Light Emitting Diodes (LED). LED lights illuminate almost instantly, use less energy, and last significantly longer than standard light bulbs.

\*Feature available on select models.



# Safety

## Fully loaded with peace of mind.

It's one thing to be safe. It's quite another to be given accolades for safety. So when the 2011 Tiguan earned the Insurance Institute for Highway Safety's (IIHS) Top Safety Pick award for the second year in a row, we were honored, but hardly surprised. That's because every Volkswagen is engineered to the highest standards. Volkswagen standards. And it's why every model is equipped with active and passive safety features like Electronic Stability Control (ESC), Hydraulic Brake Assist (HBA), and a crash-optimized front end to help protect you in the event of a collision. So you can drive with confidence knowing you're not just safe, you're Volkswagen safe.

**Active safety.** Active safety features are the things that help you prevent a collision, such as headlights, turn signals, mirrors, brakes, steering, and traction control elements like ABS and ESC. They may sound basic, but those elements can help save your life.

**Passive safety.** Passive safety features are what help protect you during an accident, such as safety belts, airbags, steel-reinforced seating, safety cages, and crumple zones. You know that German engineering you love under the hood? Well, it's actually throughout the entire car.

\*Airbags are supplemental restraints only and will not deploy under all crash circumstances. Always use safety belts and seat children only in the rear, using restraint systems appropriate for their size and age. \*\*The Intelligent Crash Response System (ICRS) will only activate in a collision where the airbags deploy or safety belt pretensioners activate. Not all collisions cause airbags to deploy or safety belt pretensioners to activate.

## Highlights

### ESC

#### Electronic Stability Control

ESC helps prevent oversteer or understeer during an evasive maneuver by applying corrective forces to each of the wheels. In other words, it helps you maintain control.



### ICRS

#### Intelligent Crash Response System

After the airbags have been deployed or the safety belts have triggered in a collision, the ICRS automatically unlocks all doors, disables the fuel pump, and turns on the hazard lights.\*\* That's why we call it intelligent.

## 6 standard airbags\*

## Active

#### Anti-Slip Regulation (ASR)

ASR helps prevent the wheels on your Tiguan from spinning when you accelerate by denying engine power in situations when it senses wheel slippage.

#### Anti-lock Braking System (ABS)

ABS actually serves two purposes when it comes to safety. Not only does it help keep the brakes from locking up during sudden stops, it also helps you retain control over the steering in the event of emergency braking.

#### Brake disc wipe feature

Starting fast is nice. But stopping fast is a must. So we included a brake disc wipe feature that activates when it's raining and your wipers are on to help maximize your braking ability and minimize the distance required to stop.

#### Hydraulic Brake Assist (HBA)

HBA helps ensure that you get the maximum power from the brake system. How? It judges the suddenness of the braking and applies extra pressure when you need it most.



This is a dramatization and does not depict what will happen in a collision. All bags will not inflate in real-world collisions, and if multiple bags do deploy, they will be in various stages of inflating/deflating and will never all be inflated at the same time.

## Passive

#### Crash-optimized front end

Integrated right into the front structure of your Tiguan are impact-absorbing elements that allow for compression during a collision. That helps minimize the energy that reaches you.

#### Pressure sensors for side airbags

Pressure sensors within the doors help reduce precious reaction time by responding instantly to a breach in the outside door panels and triggering the side-curtain airbags.

#### Tire Pressure Monitoring System (TPMS)

You have enough to think about without having to remember to check your tires. So we added the TPMS to monitor tire pressure and inform you of any loss in pressure when it occurs.

#### Safety cage

Beneath all that sheet metal, every Tiguan has a specially reinforced safety cage complete with anti-intrusion side beams and heat-formed B-pillars, designed to help protect you in the event of a collision.



## Carefree Maintenance®

### Wellness for your wheels.

At Volkswagen, we believe in our products so much that we give you three years or 36,000 miles of Carefree Maintenance—on the house. Come by for a courtesy vehicle check within the first 90 days, or 6,000 miles, and ask us any questions you have while we give your Tiguan a basic checkup. Then come by every year, or 10,000 miles, for your remaining scheduled maintenance checks. It's that simple. So relax and enjoy every carefree mile in your new VW. That's what it's there for. And because it's a Volkswagen, it'll keep that new-car feeling for many years to come.



No-charge scheduled Carefree Maintenance

**3** or **36,000\***  
Years Miles

\*The Volkswagen Carefree Maintenance Program covers the vehicle's scheduled maintenance for three years or 36,000 miles, whichever comes first. Coverage during the term of the new vehicle limited warranty at no additional charge. Some limitations apply. See dealer or vehicle maintenance program booklet for details.



SE shown in Candy White



## Technology



The Tiguan comes loaded with standard features that are anything but standard. That means an eight-speaker stereo that not only rocks, but rocks with uncompromised clarity. And Bluetooth® technology that doesn't just make and take calls, it also responds to your voice. And heated side mirrors with turn signals built in for added safety. Because we believe that standards should be raised whenever possible.

## Standard

### Bluetooth

You can do more than just make and take hands-free phone calls with Bluetooth with voice command. Enjoy the convenience of simply pushing a button, speaking a command to your Bluetooth-equipped phone and standing by as it makes the call for you.

### Trip computer

The onboard multi-function trip computer can tell you everything from the temperature outside to what's currently playing on the eight-speaker stereo to the number of miles until your next fill-up. It's the perfect travel companion because it has all the answers and never complains.

### Heated signal mirrors

Our side view mirrors are heated to help defrost snow, ice, and fog for greater visibility on all those chilly mornings and frigid evenings when you have to get in your Tiguan and go. And the built-in turn signals will alert everyone to your intended next move, which can help prevent collisions.

### Electric parking brake

The days of pulling levers or pushing pedals to activate the parking brake are over, thanks to the electric parking brake. Now, the simple lift of a finger is all it takes to set the brake. And because there's no handbrake lever between the front seats, you get a little more elbow room; and don't forget about the cupholders.

### In-dash CD player and multi-speaker sound system

Ever since the invention of car stereos, people have grown accustomed to listening to music when they're on the go. Or talk radio. Or the news. Thanks to the in-dash CD player with auxiliary input, you can listen to any CD you bring along for the ride and all the music on your portable MP3 player. Of course, when you're tired of playing DJ, you can just hand things over to the AM/FM stereo.

## Available

### Dynaudio® premium sound system

With the 300-watt Dynaudio sound system with eight premium speakers and DSP processing technology, road noise will practically disappear as you spend mile after mile listening to music on the premium touchscreen sound system. Plus, you can entertain yourself as the miles tick by using your three-month trial to SiriusXM Satellite Radio.

### Touchscreen navigation system

Not only does this five-inch color touchscreen stereo and navigation system come with a three-month trial subscription to SiriusXM, but it's also great at playing music you own. Whether it's on your MP3 player or a CD, your favorites are just a click away.

### iPod® integration

Once you get the MDI with iPod cable, you'll wonder how you ever lived without one. It lets you easily navigate your playlists, albums, and songs all through the intuitive touchscreen interface on your stereo. Because sometimes enjoying the ride is just as important as getting there.

### Multi-function steering wheel

Go ahead, grip the multi-function steering wheel. Marvel at its comfortable and functional design. Doesn't that feel nice? This steering wheel comes with integrated controls for easy access to the entertainment and Bluetooth systems. It's your connection to the road, your car, and so much more.

### Touchscreen sound system

On the touchscreen stereo, you've got an in-dash six-CD changer, AM/FM stereo, and SD card reader, all playing tunes through eight speakers. Did we mention that the CD changer can also play MP3 and WMA CDs with hundreds of songs on a single disc? Plus, all of that music, entertainment, and more can be easily navigated using the intuitive 6.5-inch touchscreen interface right in the dash of your Tiguan.

### Bi-Xenon headlights with LED Daytime Running Lights

Brighter than halogen or regular filament bulbs, Bi-Xenon light is created by an arc of electricity inside the bulb that's filled with xenon gas. It's so effective that both the low and high beams can use the same bulb. They're headlights Edison would be proud of.



The Tiguan has a whole slew of premium features that take the joy of German engineering to the next level. From color touchscreen navigation with SiriusXM Satellite Radio to a 300-watt sound system, they're engineered to add some serious fun to every drive.





## Tiguan S

### S

Includes 2.0L, 200-hp TSI® engine; 6-speed manual transmission; 16" steel wheels with all-season tires; Climatic manual climate control; cloth seating surfaces; 8-way manual adjustable seat with lumbar support; 8-way adjustable passenger's seat with lumbar and fold-flat function; 40/20/40-split folding rear seat, reclining with fore and aft sliding adjustment; foldable rear armrest with pass-through storage and 2 cupholders; multi-function trip computer; 8-speaker sound system with MP3- and WMA-compatible in-dash CD player, AM/FM radio, AUX-in for portable audio players; Bluetooth®; cruise control; Electronic Stability Control (ESC); Anti-lock Braking System (ABS) with front and rear disc brakes; Anti-Slip Regulation (ASR); Tire Pressure Monitoring System (TPMS).

### S with Sunroof

Includes all S features, plus: Power tilting/sliding panoramic sunroof; privacy glass.

### Options

6-speed automatic transmission with Tiptronic® and Sport mode with 16" Portland alloy wheels. 4MOTION® all-wheel-drive system. Trailer hitch.

## Tiguan SE

### SE

Includes all S features, plus: 6-speed automatic transmission with Tiptronic and Sport mode; 18" New York alloy wheels with all-season tires; halogen reflector lens foglights; silver roof rails; chrome window surrounds and protective side moldings; privacy glass; V-*Tex* leatherette seating surfaces; comfort 8-way partial-power driver's seat; heated seats and washer nozzles; leather-wrapped shift knob and multi-function steering wheel; Big Roof Storage System; touchscreen Premium VIII sound system with HD Radio,<sup>™</sup> built-in MP3- and WMA-compatible 6-disc CD changer, SD memory card reader, AUX-in for portable audio players, Media Device Interface (MDI) with iPod® cable, and SiriusXM Satellite Radio with 3-month trial subscription.

### SE with Sunroof and Navigation

Includes all SE features, plus: Power tilting/sliding panoramic sunroof, RNS 315 navigation system with 5" color touchscreen in center console and SD memory card reader.

### Options

4MOTION all-wheel-drive system. Trailer hitch.

## Tiguan SEL

### SEL

Includes all SE with Sunroof and Navigation features, plus: 19" Savannah alloy wheels with all-season tires; Climatronic® dual-zone automatic climate control; Bi-Xenon<sup>™</sup> high-intensity headlights with LED Daytime Running Lights (DRL) and Adaptive Front-lighting System (AFS); 12-way power seats with leather seating surfaces, 4-way lumbar support and 3-position memory for driver; automatic rain-sensing wipers; keyless access with push-button start; self-dimming rearview mirror; adjustable ambient floor-mounted lighting.

### SEL with Premium Navigation

Includes all SEL features, plus: RNS 510 navigation system with 6.5" color touchscreen in center console, 30GB hard disk, SD memory card reader, and SiriusXM Traffic<sup>™</sup> with 3-month trial subscription. (Dynaudio® premium sound system included with 4MOTION.)

### Options

4MOTION all-wheel-drive system. Trailer hitch.

## Specifications

Exterior	S	SE	SEL
Privacy glass	SR	●	●
Halogen headlights with clear, lightweight, chip-resistant polycarbonate lenses and Daytime Running Lights (DRL)	●	●	●
Bi-Xenon high-intensity headlights with LED Daytime Running Lights (DRL) and Adaptive Front-lighting System (AFS)	–	–	●
Halogen reflector lens foglights, integrated into front bumper	–	●	●
Power-operated, heated side mirrors with integrated turn signals	●	●	–
Power-operated, heated side mirrors with integrated turn signals and memory	–	–	●
Chrome applications to exterior side window frames	–	●	●
Silver roof rails	–	●	●
Power-sliding panoramic sunroof (12.7 sq. ft.)	SR	SN	●
Tire Pressure Monitoring System (TPMS)	●	●	●
16" steel wheels with anti-theft wheel locks	●	–	–
16" alloy wheels with anti-theft wheel locks	○	–	–
18" alloy wheels with anti-theft wheel locks	–	●	–
19" alloy wheels with anti-theft wheel locks	–	–	●
Heated front windshield washer nozzles	–	●	●
Rain-sensing windshield wipers	–	–	●

Interior	S	SE	SEL
Climatic single-zone climate control with pollen filter	●	●	–
Climatronic dual-zone electronic climate control with pollen filter	–	–	●
Anti-theft alarm system for doors, hood, trunk, and radio with audible and visual activation	●	●	●
Immobilizer theft-deterrent system	●	●	●
8-speaker sound system with MP3- and WMA-compatible in-dash CD player and AM/FM radio	●	–	–
Touchscreen Premium VIII sound system with HD Radio, built-in MP3- and WMA-compatible 6-disc CD changer, SD memory card reader	–	●	–
RNS 315 navigation system with 5" color touchscreen and SD memory card reader	–	SN	●
RNS 510 navigation system with 6.5" color touchscreen, SiriusXM Traffic with 3-month trial subscription, SD memory card reader, and 30GB hard disk	–	–	PN
Dynaudio premium sound system with 8 high-end speakers (4 tweeters, 4 bass/midrange); 300-watt amplifier and DSP (Digital Sound Processor) technology (SEL with Premium Navigation with 4MOTION only)	–	–	PN
SiriusXM Satellite Radio with 3-month trial subscription	–	●	●
AUX-in for portable audio players	●	●	●
Media Device Interface (MDI) with iPod cable	–	●	●
Bluetooth technology	●	●	●
Cruise control	●	●	●
Carpeted cargo area; trunk cover with 4 tie-down hooks in cargo area	●	●	●
Speedometer, tachometer, odometer, trip odometer, fuel gauge, temperature gauge, oil gauge, gear indicator, clock, outside temperature	●	●	●
Multi-function trip computer with compass, trip time, trip length, average trip speed, average trip fuel consumption, current fuel consumption, miles to empty, radio station display, and personalizing functions	●	●	●
2 radio-frequency remote transmitter key fobs with lock, unlock, rear trunk release, and panic button for central locking	●	●	●
3 12V power outlets: 1 in front center console, 1 in center console for rear seating positions, and 1 in cargo area	●	●	●
Dual front reading lights, illuminated glovebox, and luggage compartment lighting	●	●	●
Keyless access with push-button start	–	–	●
Driver and passenger visor vanity mirrors, illuminated and with covers	●	●	●
Self-dimming rearview mirror with on/off switch	–	–	●
Driver and front passenger front and side thorax airbag supplemental restraint system*	●	●	●
Side Curtain Protection® head airbags, front and rear*	●	●	●
3-point safety belts for all seating positions; safety belt pretensioners for driver, front passenger, and rear outboard seating positions	●	●	●
LATCH (Lower Anchors and Tethers for CHildren) child seat anchor points	●	●	●

Interior cont.	S	SE	SEL
8-way manual driver seat with adjustable lumbar support	●	–	–
8-way manual passenger seat with adjustable lumbar support and fold-flat function	●	–	–
8-way partial power driver comfort seat with adjustable lumbar support and rear seat pockets (2-way power recline; 6-way manual)	–	●	–
8-way manual passenger comfort seat with adjustable lumbar support, fold-flat function, and rear seat pockets	–	●	●
12-way power adjustable driver seat; memory function for driver seat and exterior mirrors	–	–	●
Heated front seats	–	●	●
40/20/40-split folding rear seat, slide adjustment, adjustable backrest	●	●	●
Trailer hitch preparation (wiring, bumper, and crossbar with mounting plate)	○	○	○
3-spoke steering wheel, height-adjustable, with telescoping steering column	●	–	–
3-spoke, leather-wrapped, multi-function steering wheel, height-adjustable, with telescoping steering column	–	●	●
Front center armrest with storage; 2 front cupholders, 2 cupholders in rear armrest	●	●	●
Lockable glovebox, illuminated upon opening, with adjustable cooling feature	●	●	●
Cloth seating surfaces	●	–	–
V- <i>Tex</i> leatherette seating surfaces	–	●	–
Leather seating surfaces	–	–	●
Power windows with pinch protection; front windows with automatic 1-touch feature, operable from driver's side only	●	●	●

Technical	S	SE	SEL
2.0L TSI, 16-valve, DOHC, in-line 4-cylinder turbocharged engine with intercooler and FSI® direct injection technology; 200 hp, 207 lbs/ft of torque	●	●	●
4MOTION all-wheel-drive system	○	○	○
Power-assisted, front vented disc brakes (312 mm X 25 mm); rear solid disc brakes (286 mm X 12 mm)	●	●	●
Electromechanical power steering with variable assistance and active return	●	●	●
Independent suspension with front MacPherson struts and rear fully independent suspension	●	●	●
Towing capacity – 2,200 lbs.**	●	●	●
Electronic Stability Control (ESC), Anti-Slip Regulation (ASR), Electronic Differential Lock (EDL), and Engine Braking Assist (EBA)	●	●	●
Anti-lock Braking System (ABS), Electronic Brake-pressure Distribution (EBD), and Hydraulic Brake Assist (HBA)	●	●	●
Intelligent Crash Response System (ICRS) <sup>†</sup>	●	●	●
Electric parking brake with brake disc wipe feature	●	●	●
Trailer roll stability program	●	●	●
6-speed manual transmission	●	–	–
6-speed automatic transmission with Tiptronic and Sport mode	○	●	●
12-year/unlimited mileage Limited Warranty Against Corrosion Perforation	●	●	●
5-year/60,000-mile (whichever occurs first) Powertrain Limited Warranty	●	●	●
3-year/36,000-mile (whichever occurs first) New Vehicle Limited Warranty	●	●	●
3-year/36,000-mile (whichever occurs first) Roadside Assistance <sup>††</sup>	●	●	●
No-charge scheduled Carefree Maintenance Program <sup>‡</sup>	●	●	●

Dimensions	
Wheelbase	102.5 inches (2,604 mm)
Front track	61.8 inches (1,570 mm)
Rear track	61.9 inches (1,571 mm)
Cargo capacity	23.8 cu. ft. (0.673 cu. m)
Cargo capacity with folded-down rear seats	56.1 cu. ft. (1,589 cu. m)
Length	174.3 inches (4,427 mm)
Width	71.2 inches (1,809 mm)
Height	66.3 inches (1,683 mm)
Ground clearance	6.9 inches (175 mm)

<sup>[</sup>\*Airbags are supplemental restraints only and will not deploy under all crash circumstances. Always use safety belts and seat children only in the rear, using restraint systems appropriate for their size and age. \*\*Optional towing package required. See owner's manual for details. †The Intelligent Crash Response System (ICRS) will only activate in a collision where the airbags deploy or safety belt pretensioners activate. Not all collisions cause airbags to deploy or safety belt pretensioners to activate. ††Roadside Assistance provided by Signature Motor Club, Inc., and Signature Motor Club of California, Inc. ‡The Volkswagen Carefree Maintenance Program covers the vehicle's scheduled maintenance for three years or 36,000 miles, whichever comes first. Coverage during the term of the new vehicle limited warranty at no additional charge. Some limitations apply. See dealer or vehicle maintenance program booklet for details.
<sup>]</sup>



# Wheels

# Accessories

# Exterior

# Interior

## Standard

[drivergear.vw.com](http://drivergear.vw.com)



S 16" Portland



Chrome Exhaust Tips



Splash Guards



Pedal Caps



SE 18" New York



Base Carrier Bars with Canoe Carrier Attachment



Base Carrier Bars with Roof Box Carrier Holder

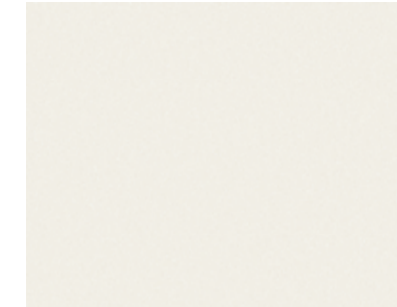


Heavy Duty Trunk Liner with CarGo Blocks



SEL 19" Savannah

## Paint



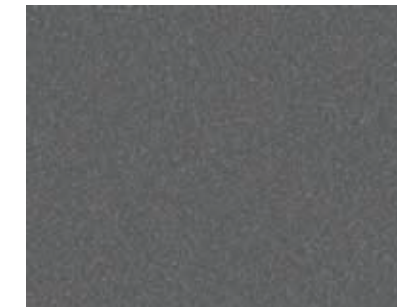
**Candy White**  
Charcoal, Sandstone



**Reflex Silver Metallic**  
Charcoal



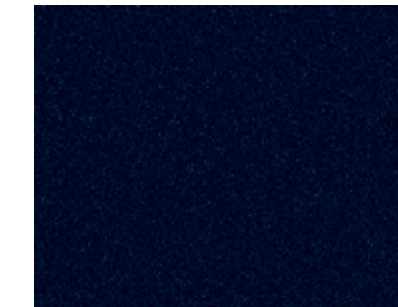
**White Gold Metallic**  
Charcoal, Sandstone



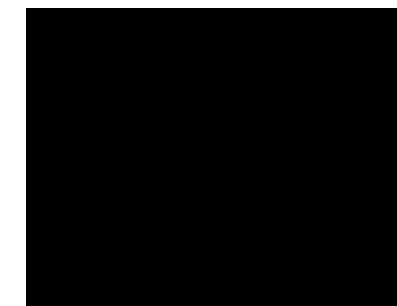
**Pepper Gray**  
Charcoal, Sandstone



**Wild Cherry Metallic**  
Charcoal, Sandstone



**Night Blue Metallic**  
Charcoal, Sandstone



**Deep Black Metallic**  
Charcoal, Sandstone

## Stadt Leather



Charcoal



Sandstone

## V-Tex Leatherette



Charcoal



Sandstone

## Cloth



Charcoal





That's Das Auto.

2012 Volkswagen Family

All-new Beetle



All-new Passat



Tiguan



Jetta



Eos



Golf



Touareg



CC



GTI



Jetta SportWagen



Routan



vw.com

©2011 Volkswagen of America, Inc. Printed in the U.S.A. Volkswagen of America, Inc., believes the specifications in this brochure to be correct at the time of printing. Specifications, standard equipment, options, fabrics and colors are subject to change without notice. Some features may be unavailable when your vehicle is built. Some vehicles are pictured with options that may be available at extra cost or may not be available on some models. Ask your dealer about availability of options and verify that the vehicle you ordered includes the equipment you ordered. Tires are supplied and warranted by their manufacturer. "Volkswagen," the Volkswagen logo, "Das Auto," "Tiguan," "TSLI," "4MOTION," "Climatronic," and "DSG" are registered trademarks of Volkswagen AG. "Carefree Maintenance," the Carefree Maintenance logo and "Side Curtain Protection" are registered trademarks of Volkswagen Group of America, Inc. "Tiptronic" is a registered trademark of Dr. Ing. h.c. F. Porsche AG. "Bluetooth" is a registered trademark of Bluetooth SIG, Inc. "Bi-Xenon" is a trademark of Hella, Inc. "iPod" is a registered trademark of Apple, Inc. All rights reserved. iPod is not included. SiriusXM Satellite Radio, Traffic and Travel Link subscriptions sold separately or as a package after trial expires. Subscriptions to all SiriusXM services are sold separately after 3-month trial expires. SiriusXM Traffic service available in select markets. If you decide to continue your SiriusXM service at the end of your subscription, the plan you choose will automatically renew and bill at then-current rates until you call 1-866-635-2349 to cancel. See SiriusXM Customer Agreement for complete terms at www.siriusxm.com. Sirius U.S. Satellite service available only to those at least 18 years of age in the 48 contiguous U.S.A., D.C. and P.R. (with coverage limitations). Sirius, XM and all related marks and logos are trademarks of Sirius XM Radio Inc. Volkswagen DVD Navigation depends on signals from the worldwide Global Positioning Satellite network. The vehicle's electrical system, and existing wireless and satellite technologies, must be available and operating properly for the system to function. The system is designed to provide you with suggested routes in locating addresses, destinations and other points of interest. Changes in street names, construction zones, traffic flow, points of interest and other road system changes are beyond the control of Volkswagen of America, Inc. Complete detailed mapping of lanes, roads, streets, toll roads, highways, etc., is not possible, therefore you may encounter discrepancies between the mapping and your actual location. Please rely on your individual judgment in determining whether or not to follow a suggested navigation route. Periodically the mapping is updated and a new DVD will be required in order to maintain the latest navigation information available to us. These will be available for purchase from time to time at additional cost. For further information regarding any Volkswagen model, please call 1-800-DRIVE-VW, or just look us up at vw.com. VW12TIGBUS