



2014 Passat



Das Auto.

Midsized. Not downsized.

Have you noticed a lot of midsize sedans are downsizing? Smaller in overall size, less powerful engines, less interior cabin space. It seems the list of smaller keeps getting bigger. The Passat takes a different approach, providing more everywhere it can. Which is why it's no surprise that it has best-in-class rear legroom.* And more miles per tank than any midsize car.** And

some of the highest possible safety ratings. Drivers seem to like this whole "more" concept. And it looks like the critics do too. It's no wonder that the Passat is one of the most-awarded midsize sedans in its class. So if you're looking for a midsize sedan, get the one that goes big in every way. That's the Power of German Engineering.



V6 SEL Premium shown in Black

*Based on manufacturers' published data comparing nonpremium midsize sedans. **2013 Passat 2.0L TDI Clean Diesel, manual transmission: 31 city/43 highway mpg EPA estimates. Range based on 43 highway mpg EPA estimate and an 18.5-gallon tank. Your mileage will vary and depends on several factors, including your driving habits and vehicle condition. Model year 2014 estimates not available at time of printing.



Information Provided by:

DEALER
E-PROCESS



Passat, by the numbers.

1

QUALITY

page 05

The Passat has quality you can feel every time you interact with it. But we think the best feeling you'll get is when you drive it.

2

PERFORMANCE

page 07

It's always nice having choice. That's why we gave the Passat four unique engines. Pick your power.

3

TDI® CLEAN DIESEL

page 08

Wouldn't it be great to have power and fuel efficiency?* We think so, which is why we created our TDI Clean Diesel engine.

4

INTERIOR

page 11

With premium quality craftsmanship and best-in-class rear legroom,** you'll find few midsize sedans as accommodating as ours.

5

TECHNOLOGY

page 15

Proof that you can be in touch and in tune with your car, especially when you're rocking out to the available Fender® Premium Audio System.

6

SAFETY

page 17

Many cars advertise how safe they are. The Passat backs it up with a 5-star overall Safety Rating from NHTSA† and a 2013 Top Safety Pick+ from the IIHS.††

7

ACCOLADES

page 19

You've got a lot of choices in the midsize sedan segment. Can you guess which one was the pick of automotive experts?

8

SPECS & ACCESSORIES

page 23

Colors. Trims. Wheels. They're all the things that make a Passat your Passat.

Information Provided by:



*See www.fueleconomy.gov for EPA estimates. Your mileage will vary and depends on several factors, including your driving habits and vehicle condition. **Based on manufacturers' published data comparing nonpremium midsize sedans. †Government star ratings are part of the National Highway Traffic Safety Administration's (NHTSA's) New Car Assessment Program (www.safercar.gov). ††Top Safety Pick+ based on moderate-overlap frontal crash test, small-overlap frontal crash test, side-impact crash test, rear-impact crash test, and roof strength test. Test performed by the Insurance Institute for Highway Safety. For details, visit www.iihs.org. See vw.com for more information on safety features.



V6 SEL Premium shown in Tungsten Silver Metallic

It's all coming together beautifully.

QUALITY

You know it when you see it. And feel it. And hear it. Because inside and out, the Passat is designed with quality you won't typically find in this class. Things like our class-exclusive laser seam welding, which provides a higher build quality you can actually see. Or that solid thunk you hear every time you close a door. Or maybe it's the premium quality materials everywhere you touch. Of course, if you're not sure where to start, just drive the Passat. We're sure it'll all come together very quickly.

Manufactured in a LEED® Platinum-certified plant in Chattanooga, Tennessee

Stylish and defined character lines

Laser seam welding

Foglights with low-speed corner-illuminating feature*

Premium interior appointments



Forged-steel door hinge. Hear that solid door thunk? It's proof that the sturdy construction you know and love is found throughout the whole car. Even in our door hinges.



Leather-wrapped steering wheel. The available leather-wrapped steering wheel feels good. It makes you feel in control. And it makes you want to drive. It's quality you'll notice every time you take the wheel, or take a turn.

More power to you.

PERFORMANCE

Having power is great. Getting to pick how you get that power is even better. Which is why we gave the Passat four unique powertrain options, including a class-exclusive TDI Clean Diesel engine, a standard 5-cylinder engine, one of the most powerful V6 engines in its class, and a turbocharged engine that also happens to combine great performance and fuel efficiency.* The Passat is also one of the only midsize sedans to offer a 6-speed DSG® automatic transmission with Tiptronic®, for faster shifts and even the option to shift for yourself. So if you're looking for power, the Passat gives you that and something more. The power of choice.



V6 SEL Premium in Tungsten Silver Metallic



01 2.5L engine. A 4-cylinder engine is standard for this class. Which is why we raised the standard by including a 5-cylinder engine on the Passat.



02 1.8T engine. Sometimes you just need a little boost. That's why we made an eco-conscious engine that gets impressive gas mileage, and it also packs a turbocharger for that extra boost of power when you need it.



03 3.6L V6 engine. The 280-hp V6 on the Passat has a power delivery and smoothness that few midsize sedans can match. Which isn't surprising, since you can't even get a V6 on some midsize sedans.



04 2.0L TDI Clean Diesel. With up to 43 hwy mpg and a best-in-class range of 795 miles per tank, the available TDI Clean Diesel gives the Passat better range than any midsize sedan, including any hybrid midsize sedan.**



*See www.fueleconomy.gov for EPA estimates. Your mileage may vary and depends on several factors, including your driving habits and vehicle condition. **2013 Passat 2.0L TDI Clean Diesel, manual transmission: 31 city/43 highway mpg EPA estimates. Range based on 43 highway mpg EPA estimate and an 18.5-gallon tank. Your mileage will vary and depends on several factors, including your driving habits and vehicle condition. Model year 2014 estimates not available at time of printing.

2.0L TDI Clean Diesel engine. Engineered with the idea that less is more. The Passat TDI has lower CO₂ emissions compared to 93% of other vehicles.* So every getaway you make will be a cleaner one.

795

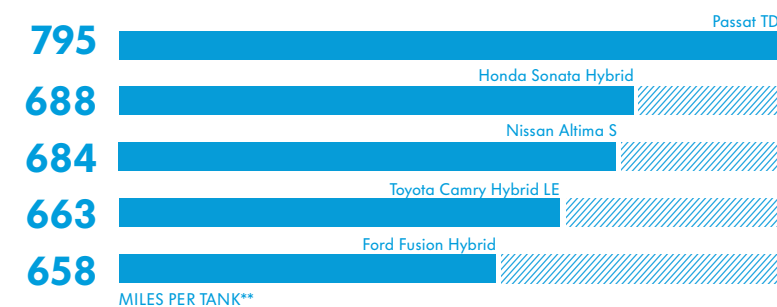
miles per tank.**

TDI CLEAN DIESEL

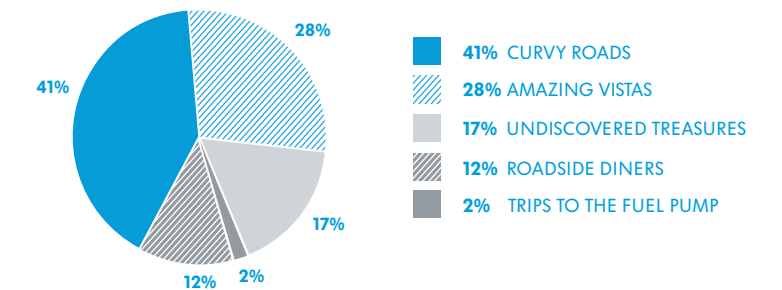


Extended play. You know that feeling on a trip when you don't want it to end? We do too. This direct-injection engine was engineered to really go the distance—up to 43 highway mpg, or an astonishing 795 miles. Add in all that addictive torque and turbocharged power that the TDI is known for, and you may never stop driving. Because it's always more fun finding your next destination than the nearest fuel pump.

Going longer



Longer-lasting fun



Information Provided by:



*Based on 2013 Federal Emissions Guide for Department of Energy comparing grams per mile of Combined CO₂ emissions as shown on Federal Emissions label. **2013 Passat 2.0L TDI Clean Diesel, manual transmission: 31 city/43 hwy mpg EPA estimates. Range based on 43 hwy mpg EPA estimate and an 18.5-gallon tank. Your mileage will vary. Comparisons based on manufacturers' published EPA estimates. 2013 Honda Sonata Hybrid 2.4L, automatic transmission: 36 city/40 hwy mpg. Range based on 40 hwy mpg EPA estimate and a 17.2-gallon tank. 2013 Nissan Altima S 2.5L, automatic transmission: 27 city/38 hwy mpg. Range based on 38 hwy mpg EPA estimate and an 18-gallon tank. 2013 Toyota Camry Hybrid LE 2.5L, automatic transmission: 43 city/39 hwy mpg. Range based on 39 hwy mpg EPA estimate and a 17-gallon tank. 2013 Ford Fusion Hybrid 2.0L, automatic transmission: 47 city/47 hwy mpg. Range based on 47 hwy mpg EPA estimate and a 14-gallon tank. Your mileage will vary and depends on several factors, including your driving habits and vehicle condition. Model year 2014 estimates not available at time of printing.



Room with a view.

INTERIOR

Sit inside the Passat, and you'll be treated to a roomy cabin that looks and feels unlike any other midsize sedan. That's because it's the only German-engineered sedan in its class. Look around, and you'll see premium quality and craftsmanship on the dash and doors. You'll notice thoughtful touches like the driver's side glovebox. And it's doubtful anyone could miss its rear seat, with best-in-class rear legroom.* Of course, if you really want a room upgrade, you can add available interior ambient lighting and a power sunroof. We think either can noticeably expand your views.

Leather-wrapped, multi-function steering wheel**

Paddle shifters**

Multi-function trip computer

Climatronic® dual-zone automatic climate control**

Driver's and passenger's side glovebox

Interior ambient lighting**

Power tilting/sliding sunroof**



V6 SEL Premium shown in Cornsilk Beige leather with Dinamica inserts

*Based on manufacturers' published data comparing nonpremium midsize sedans. **Feature available on select models.



V6 SEL Premium shown in Cornsilk Beige leather with Dinamica inserts

01 Autumn Nut Burl interior trim. Looking to spruce up the interior of your Passat? We can't think of anything better to do it with than the available Autumn Nut Burl wood finish.

02 Best-in-class rear legroom. People always talk about wanting some extra elbow room. We thought you could use some additional legroom as well.*

03 Leather seating surfaces with Dinamica® inserts. Eco-conscious thinking goes into everything we do, including our leather seating surfaces with Dinamica inserts. Each insert uses 20 recycled bottles per seat. So, you can sit easy knowing you're doing your part just by sitting down.

V-Text leatherette seating surfaces**

Leather seating surfaces with Dinamica inserts**

8-way power front seats with memory for driver's seat**

Heated front seats**

Remote start feature**

*Based on manufacturers' published data comparing nonpremium midsize sedans. **Feature available on select models.





60/40-split folding rear seats

Rear pass-through with console*

Backseat armrest with storage*

15.9

cubic feet of trunk space.

INTERIOR

Load more loads. We know you're busy. And you've got lots to do. Which usually means you've got lots of stuff too. No problem. The Passat was designed to take you, your friends, and all of your stuff wherever you want to go. With a cavernous 15.9 cubic feet of trunk space combined with a 60/40-split folding rear seat, you can fit things you never thought possible. Like that home improvement project from your local furniture store. Or that shiny new toy from the electronics store. Or all your gear and luggage for your next big trip. Whatever you decide you want to take, you can load an impressive amount of stuff into the Passat. Loads more.





Never miss a beat.

TECHNOLOGY

Whether it's your favorite tune or staying in touch with your favorite friend, you'll never miss a thing with all of the technologies available on the Passat. Things like Bluetooth® with audio streaming let you play your music wirelessly through the stereo system and make calls on the go.*/** A choice of two touchscreen navigation systems puts you in touch with your next adventure. And the available 400-watt Fender Premium Audio System has crystal-clear sound, proving it can hold more than a few beats on its own.

Keyless access with push-button start**/†

Rearview camera*

Bluetooth with audio streaming**

Volkswagen Car-Net™ connected car features††

RNS 315 navigation system*

RNS 510 premium navigation system*

Fender Premium Audio System*

Media Device Interface (MDI) with iPod® cable**/**



Fender
PREMIUM AUDIO

When we decided we wanted to put a rockin' sound system into the Passat, we thought "Why not go to the company that really knows rock?" So we partnered with the legendary Fender music company. You know, the one that makes all the guitars, amps, and speakers you see at shows. And we had them design a system just for Volkswagen. So now when you want to hear your music in concert sound, you don't have to go to a concert to do it. Just your driveway.



Information Provided by:

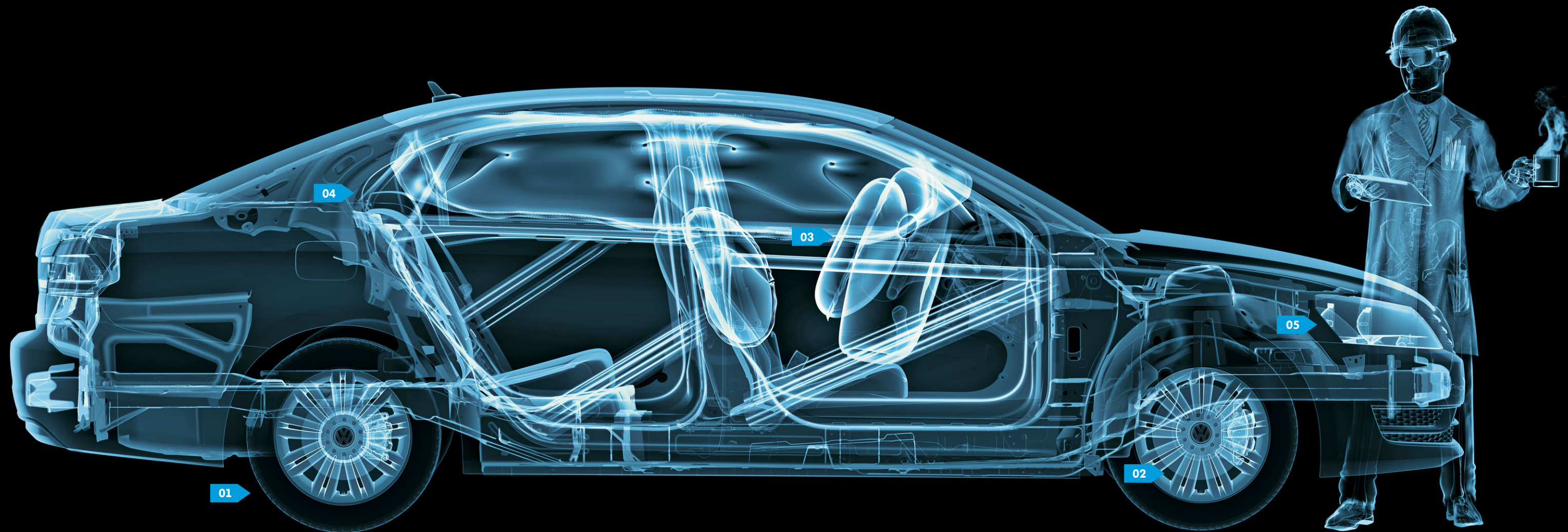
DEALERS
PROCESS

*Feature available on select models. **Requires compatible device. †See page 23 for important information on this feature. ††VW Car-Net services provided by Verizon Telematics, Inc. Available only on select models. Automatic Crash Notification may be enabled for up to six months without activating a trial or paid subscription. Manual Emergency Call feature and all other VW Car-Net features require trial or paid subscription. VW Car-Net services require vehicle cellular connectivity and availability of vehicle GPS signal. VW Car-Net includes services that may collect location information. See applicable Terms of Service available at vw.com/carnet for details.

5★ safety

SAFETY

Safety that's easily transparent. Beneath that attractive Passat exterior, you'll find even more attractive features designed to help keep you safe. Numerous active safety features help reduce the likelihood of an accident occurring in the first place. And should the unthinkable become unavoidable, we've implemented multiple passive safety systems to do our very best to help protect you and your passengers. It's no wonder that the 2013 Passat was awarded a 5-star Overall Safety Rating from the National Highway Traffic Safety Administration, as well as being named a Top Safety Pick+ from the Insurance Institute for Highway Safety—the highest rating possible from both organizations (applies to Passat models built after October 2012)*. That's a pretty clear endorsement.



01 Tire Pressure Monitoring System (TPMS).

The TPMS lets you know when the pressure of one of your tires is low, helping improve overall safety, tire life, handling, and even fuel economy. Good reasons why the Passat tirelessly monitors your tire pressure.

02 Seven active stability-enhancing systems.

The Passat features seven active stability systems to help enhance control when accelerating, braking, and while cruising. And it can help enhance your sense of confidence on the road too.

03 Adaptive airbags.

For enhanced protection, the front airbags can tailor their operation based on crash severity and even the weight of the occupants. And pressure sensors within the doors help accelerate the side airbags' response time in side impacts. All to help provide an extra cushion of safety.†

04 Safety cage.

Front and rear crumple zones help absorb crash energy, while a rigid safety cage helps deflect it away from the occupant compartment. Heat-formed steel B-pillars and anti-intrusion side beams prove the Passat not only has your back, but your sides as well.

05 Intelligent Crash Response System (ICRS).

In the event of a collision that activates the vehicle's airbags,‡ the ICRS will automatically disable the fuel pump, unlock all the doors, and turn on the hazard lights.†† It's how your Volkswagen looks out for you when you need it most.

Dramatization.**

Information Provided by:



*Government star ratings are part of the National Traffic Safety Administration (NHTSA's) New Car Assessment Program (www.safercar.gov). †Top Safety Pick+ based on moderate-overlap frontal crash test, small-overlap frontal crash test, side-impact crash test, rear-impact crash test, and roof strength test. Test performed by the Insurance Institute for Highway Safety. For details, visit www.iihs.org. ‡See www.vw.com for more information on safety features. **This is a dramatization and does not depict what will happen in an accident. All bags will not inflate simultaneously in real-world accidents and if multiple bags do deploy, they will be in various stages of inflating/deflating and will never all be inflated at the same time. †Airbags are supplemental restraints only and do not always deploy under all crash circumstances. Always use safety belts and seat children only in the rear, using restraint systems appropriate for their size and age. ††The Intelligent Crash Response System (ICRS) will only activate in a collision where the airbags deploy or safety belt pretensioners activate. Not all collisions cause airbags to deploy or safety belt pretensioners to activate.



TDI SEL Premium shown in Tungsten Silver Metallic

In all modesty.

ACCOLADES

We don't like to brag. Thankfully, with the Passat, we don't have to. We let the car speak for itself. Or in this case, the many automotive experts and third parties who have awarded the Passat as their top midsize sedan. And most fuel-efficient.* And one of the highest rated in safety. Even the plant that makes the Passat received recognition as the only automotive manufacturing facility in the world to receive LEED® Platinum certification for environmentally sound building practices. OK, maybe we'll brag just a little. But drive a Passat, and you'll understand why it's so hard to be modest about owning one.

A *Consumers Digest* Best Buy – 2013 Passat**

Built in a LEED Platinum-certified plant

2013 *Kelley Blue Book's* KBB.com Best Family Car†

2012 U.S. Department of Transportation
5-Star Overall Rating††

Cars.com Best of 2012

2012 *Kelley Blue Book's* KBB.com 10 Best Sedans
Under \$25K†

2013 IIHS Top Safety Pick+‡



Information Provided by:



*See www.fueleconomy.gov for EPA estimates. Your mileage will vary and depends on several factors, including your driving habits and vehicle condition. **The Best Buy Seal and other licensed materials are registered certification marks and trademarks of Consumers Digest Communications, LLC, used under license. For award information, visit ConsumersDigest.com. †From 2012, 10 Best Sedans Under \$25,000 and 2013, 10 Best Family Cars from Kelley Blue Book's www.kbb.com. Kelley Blue Book is a registered trademark of Kelley Blue Book Co., Inc. ††Government star ratings are part of the National Highway Traffic Safety Administration's (NHTSA's) New Car Assessment Program (www.safercar.gov). ‡Top Safety Pick+™ based on moderate-overlap frontal crash test, side-impact crash test, side-impact crash test, rear-impact crash test, and roof strength test. Test performed by the Insurance Institute for Highway Safety. For details, visit www.iihs.org. See vw.com for more information on safety features.

Our environment.

Building cars comes with responsibilities—not just to you, but to the environment. And this starts before our cars are even built, like at our LEED® Platinum-certified plant in Chattanooga. It follows our “Think Blue. Factory.” philosophy by taking a holistic approach to our ecological activities. Our goal is to reduce the environmental impacts from the Volkswagen brand’s production operations by 25% per vehicle by 2018 by improving resource efficiency and reducing emissions. As you can see, this sort of thinking really does come second nature to us. **Think beyond green. Think Blue.**

Our commitment to the environment

Encouraging eco-conscious behavior

The first LEED Platinum auto plant

Partnering with other progressive thinkers like MoMA, the Surfrider Foundation, and PeopleForBikes



Your enjoyment.

Driving a fuel-efficient* vehicle shouldn’t mean sacrificing performance. There are just too many fun, curvy roads out there, which is why Volkswagen makes a variety of fun-to-drive engines, including a high-range TDI® Clean Diesel engine with enough grin-inducing torque to pin you back in your seat. Our TSI® engine uses direct injection to be both powerful and efficient, and our Jetta Hybrid sports a turbocharger under its hood, which is the first of its kind in its class. Who knows, this could account for all the happy VW drivers out there. Quite honestly, nothing would make us happier.

Our commitment to your driving enjoyment

TDI technology uses less fuel and provides more torque than comparable gas engines*

TSI engines use turbocharging and direct injection to be more powerful and efficient*

The 48 highway mpg Jetta Hybrid is the first turbocharged hybrid in its class**

Think Blue.®



Information Provided by:

DEAL
E-PROCESS

*See dealer for EPA estimates. Your mileage will vary and depends on several factors, including your driving habits and vehicle condition.
**2014 Jetta Hybrid, 7-speed DSG transmission: 48 highway/42 city/45 mpg EPA estimates. Your mileage will vary and depends on several factors, including your driving habits and vehicle condition. Model year 2014 EPA estimates not available at time of printing.

2.5L

S Includes: 2.5L, 170-hp, 5-cylinder engine; 5-speed manual transmission; 16" steel wheels with wheel covers; manual air-conditioning; multi-function steering wheel; automatic headlights with Automatic Vehicle Illumination feature; cloth seating surfaces; 60/40-split folding rear seats; Bluetooth® with audio streaming;* 6-speaker sound system with MP3- and WMA-compatible in-dash CD player, AM/FM radio, and AUX-in for portable audio players. Also available: S with 6-speed automatic transmission with Tiptronic® and Sport mode.

Wolfsburg Edition

Includes S features, plus: 16" alloy wheels; 6-speed automatic transmission; SiriusXM® Satellite Radio with 3-month trial subscription; Media Device Interface (MDI) with iPod® cable;* Volkswagen Car-Net™ connected car features;** V-Tex leatherette seating surfaces; 8-way power-adjustable driver's seat including power lumbar support; rear armrest with storage; illuminated vanity mirrors; heated front seats; leather-wrapped steering wheel, shift knob, and brake handle; Wolfsburg Edition badging.

SE

Includes S features, plus: 17" alloy wheels; heated exterior mirrors and windshield washer nozzles; multi-function trip computer; V-Tex leatherette seating surfaces; Premium VIII touchscreen sound system with HD Radio,™ 8 speakers, 6-disc CD changer, SD memory card reader, and SiriusXM Satellite Radio with 3-month trial subscription; Media Device Interface (MDI) with iPod cable;* Volkswagen Car-Net connected car features;** rearview camera; 8-way power-adjustable driver's seat including power lumbar support; illuminated vanity mirrors; heated front seats; leather-wrapped steering wheel, shift knob, and brake handle; rear air vents. Also available: SE with 6-speed automatic transmission.

SE with Sunroof

Includes all SE with 6-speed automatic transmission features, plus: 18" alloy wheels; power tilting/sliding sunroof.

SE with Sunroof and Navigation

Includes all SE with Sunroof features, plus: RNS 315 navigation system with 5" color touchscreen in center console; keyless access with push-button start.†

1.8L TSI®

SEL Premium

Includes all SE with Sunroof and Navigation features, plus 1.8L, 170-hp TSI engine: chrome protective side moldings and bumper accents; foglights with low-speed corner-illuminating feature; heated exterior mirrors with memory; Climatronic® dual-zone automatic climate control; RNS 510 navigation system with 6.5" color touchscreen and 30GB hard drive; SiriusXM Traffic™ with 4-year subscription; SiriusXM Travel Link™ with 3-month trial subscription; Fender® Premium Audio System; leather seating surfaces with Dinamica® inserts; comfort sport seats; 8-way power-adjustable front seats including power-adjustable lumbar support and memory for driver's seat; remote start; Autumn Nut Burl interior trim; HomeLink®; front and rear interior ambient lighting.

2.0L TDI® Clean Diesel

TDI SE

Includes all SE features, plus: 2.0L, 140-hp TDI Clean Diesel engine; Electromechanical Power Steering; 6-speed manual transmission.

TDI SE with Sunroof

Includes all TDI SE features, plus: 18" alloy wheels; power tilting/sliding sunroof; 6-speed automatic DSG® transmission with Tiptronic and Sport mode.

TDI SE with Sunroof and Navigation

Includes all TDI SE with Sunroof features, plus: halogen foglights with low-speed corner-illuminating feature; chrome protective side moldings and bumper accents; RNS 315 navigation system with 5" color touchscreen; keyless access with push-button start.†

TDI SEL Premium

Includes all TDI SE with Sunroof and Navigation features, plus: heated exterior mirrors with memory; Climatronic dual-zone automatic climate control; RNS 510 navigation system with 6.5" color touchscreen in center console and 30GB hard drive; SiriusXM Traffic with 4-year subscription; SiriusXM Travel Link with 3-month trial subscription; Fender Premium Audio System; leather seating surfaces with Dinamica inserts; comfort sport seats; 8-way power-adjustable front seats including power-adjustable lumbar support and memory for driver's seat; comfort sport seats; HomeLink; remote start; front and rear interior ambient lighting; Autumn Nut Burl interior trim.

3.6L V6

V6 SE

Includes all SE features, plus: 3.6L, 280-hp V6 engine; 18" alloy wheels; 6-speed automatic DSG transmission with Tiptronic and Sport mode; power tilting/sliding sunroof; chrome dual exhaust tips; leather-wrapped, multi-function steering wheel with paddle shifters; Electromechanical Power Steering; Fender Premium Audio System; comfort sport seats; halogen foglights with low-speed corner-illuminating feature.

V6 SEL Premium

Includes all V6 SE features, plus: Climatronic dual-zone automatic climate control; RNS 510 navigation system with 6.5" color touchscreen in center console and 30GB hard drive; SiriusXM Traffic with 4-year subscription; SiriusXM Travel Link with 3-month trial subscription; leather seating surfaces with Dinamica inserts; 8-way power-adjustable front seats including power-adjustable lumbar support and memory for driver's seat; keyless access with push-button start; HomeLink; remote start; front and rear interior ambient lighting; V6 door sill plates; Autumn Nut Burl interior trim.

Specs

Performance	2.5L	TDI	V6
2.5L, 20-valve, DOHC, in-line 5-cylinder engine; 170 hp, 177 lbs/ft of torque	●	–	–
1.8L TSI, 16-valve, DOHC, in-line 4-cylinder turbocharged engine with intercooler and direct fuel injection; 170 hp, 184 lbs/ft of torque	○	–	–
2.0L, 16-valve, in-line 4-cylinder turbocharged clean diesel engine with common rail direct injection; 140 hp, 236 lbs/ft of torque	–	●	–
3.6L, 24-valve, DOHC, narrow-angle V6 with FSI® direct injection; 280 hp, 258 lbs/ft of torque	–	–	●
Power-assisted, front vented disc brakes; rear solid disc brakes	●	●	●
Hydraulic power steering	●	–	–
Electromechanical Power Steering with variable assistance	–	●	●
Independent front MacPherson struts and independent rear 4-link suspension	●	●	●
5-speed manual transmission	●	–	–
6-speed automatic transmission with Tiptronic and Sport mode	○	–	–
6-speed manual transmission	–	●	–
6-speed DSG automatic transmission with Tiptronic and Sport mode	–	○	●

Technology	2.5L	TDI	V6
6-speaker sound system with MP3- and WMA-compatible in-dash CD player and AM/FM radio	●	–	–
Premium VIII touchscreen sound system with HD Radio, MP3- and WMA-compatible in-dash 6-disc CD changer, SD memory card reader, and 8 speakers	○	●	●
RNS 315 navigation system with 5" color touchscreen in center console and SD memory card reader	○	○	○
RNS 510 navigation system with 6.5" color touchscreen in center console and SiriusXM Traffic with 4-year subscription and SiriusXM Travel Link with 3-month trial subscription, SD memory card reader, and 30GB hard disk	○	○	○
Fender Premium Audio System	○	○	●
HomeLink garage door opener, integrated into sun visor	○	○	○
Bluetooth with audio streaming*	●	●	●
Volkswagen Car-Net connected car features**	○	●	●
Media Device Interface (MDI) with iPod cable*	○	●	●
SiriusXM® Satellite Radio with 3-month trial subscription	○	●	●
Keyless access with push-button start†	○	○	○
Remote start	○	○	○
AUX-in for portable audio player	●	●	●
Rearview camera	○	●	●

Interior	2.5L	TDI	V6
Manual air-conditioning	●	●	●
Climatronic dual-zone automatic climate control with pollen filter	○	○	○
Analog clock	●	●	●
Multi-function trip computer featuring compass, trip time, trip length, average trip speed, average trip fuel consumption, current fuel consumption, miles to empty, radio station display, and personalizing function	○	●	●
2 remote key fobs with lock, unlock, trunk release, and panic button	●	●	●
Interior ambient lighting, front and rear	○	○	○
Automatic locking feature (doors lock when vehicle reaches 8 mph)	●	●	●
Vanity mirrors	●	–	–
Illuminated vanity mirrors	○	●	●
3-spoke, multi-function steering wheel, height-adjustable with telescopic steering column	●	–	–
3-spoke, leather-wrapped, multi-function steering wheel, height-adjustable with telescopic steering column	○	●	●
Steering-wheel-mounted Tiptronic paddle shifters	–	–	●
Leather gearshift knob	○	●	●
Autumn Nut Burl interior trim	○	○	○
8-way power driver's seat including power-adjustable lumbar support	○	●	●
8-way power front seats including power lumbar and memory for driver's seat	○	○	○

Interior cont.	2.5L	TDI	V6
Center front armrest with integrated storage box	●	●	●
Rear center armrest, foldable with storage compartment	○	●	●
Glovebox, lockable	●	–	–
Glovebox, lockable and illuminated	○	●	●
Fully upholstered luggage compartment	●	●	●
Cloth seating surfaces	●	–	–
V-Tex leatherette seating surfaces	○	●	●
Leather seating surfaces with Dinamica inserts	○	○	○
Comfort sport seats	○	○	●
Self-dimming rearview mirror with on/off switch	○	●	●

Design	2.5L	TDI	V6
Fully galvanized sheet metal	●	●	●
Automatic Vehicle Illumination	●	●	●
Power tilting/sliding sunroof	○	○	●
Power-operated side mirrors with integrated turn signals	●	–	–
Power-operated, heated side mirrors with integrated turn signals	○	●	●
Power-operated, heated side mirrors with integrated turn signals with memory	○	○	○
Halogen reflector lens foglights with low-speed corner-illuminating feature	○	○	●
16" steel wheels with wheel covers	●	–	–
16" San Jose alloy wheel	○	–	–
17" Sonoma alloy wheel	○	●	–
18" Bristol alloy wheel	○	○	●
Heated windshield washer nozzles	○	●	●

Safety	2.5L	TDI	V6
Immobilizer III theft-deterrent system	●	●	●
Driver and passenger front and side thorax airbag supplemental restraint system††	●	●	●
Side Curtain Protection® head airbags, front and rear††	●	●	●
3-point safety belts for outboard seating positions	●	●	●
LATCH (Lower Anchors and Tethers for CHildren) child seat anchor points	●	●	●
Electronic Stability Control (ESC), Anti-Slip Regulation (ASR), Electronic Differential Lock (EDL), and Engine Brake Assist (EBA)	●	●	●
Anti-lock Braking System (ABS), Electronic Brake-pressure Distribution (EBD), Hydraulic Brake Assist (HBA)	●	●	●
Intelligent Crash Response System (ICRS)‡	●	●	●
Tire Pressure Monitoring System (TPMS)	●	●	●

Quality	2.5L	TDI	V6
12-year/unlimited distance Limited Warranty Against Corrosion Perforation	●	●	●
5-year/60,000-mile (whichever occurs first) Powertrain Limited Warranty	●	●	●
3-year/36,000-mile (whichever occurs first) New Vehicle Limited Warranty	●	●	●
3-year/36,000-mile (whichever occurs first) Roadside Assistance**	●	●	●

Dimensions	
Wheelbase	110.4 in (2,083 mm)
Front track	62.1 in (1,577 mm)
Rear track	61.0 in (1,550 mm)
Length	191.6 in (4,868 mm)
Width	72.2 in (1,835 mm)
Height	58.5 in (1,487 mm)
Ground clearance	5.4 in (138 mm)
Cargo volume	15.9 cu. ft. (0.45 cu. m)

● Standard, at no additional cost

○ Optional, additional cost

– Not Available



Information Provided by

DEAL
E-PROCESS

© 2013 Volkswagen of America, Inc. All rights reserved. *Bluetooth® is a registered trademark of Intel Corporation. **W Car-Net services provided by Verizon Telematics, Inc. Available only on select models. Automatic Crash Notification may be enabled for up to six months without activating a trial or paid subscription; Manual Emergency Call feature and all other VW Car-Net features require trial or paid subscription. VW Car-Net services require vehicle cellular connectivity and availability of vehicle GPS signal. VW Car-Net includes services that may collect location information. See applicable Terms of Service available at vw.com/carnet for details. †Some Volkswagen models are equipped with a Keyless Ignition feature. The details as to how the system works can vary and Volkswagen owners should consult their owner's literature or an authorized Volkswagen dealer for details. ††Airbags are supplemental restraints only and will not deploy under all crash circumstances. Always use safety belts and seat children only in the rear, using restraint systems appropriate for their size and age. ‡The Intelligent Crash Response System (ICRS) will only activate in a collision where the airbags deploy or safety belt pretensioners activate. Not all collisions cause airbags to deploy or safety belt pretensioners to activate. **Roadside Assistance provided by Signature Motor Club, Inc., and Signature Motor Club of California, Inc.

Passat Accessories



Rear Lip Spoiler



Door Sill Protection



Sunroof Wind Deflector



Locking Wheel Bolts



Body Styling Kit



Heavy Duty Trunk Liner with CarGo Blocks



Monster Mats®



Side Window Deflectors



Splash Guards



SunShield*



18" Spokane Wheel

To see more cool stuff for you and your Volkswagen, visit DriverGear.VW.com or see your Consultant.

Standard Wheels



Wolfsburg Edition 16" San Jose

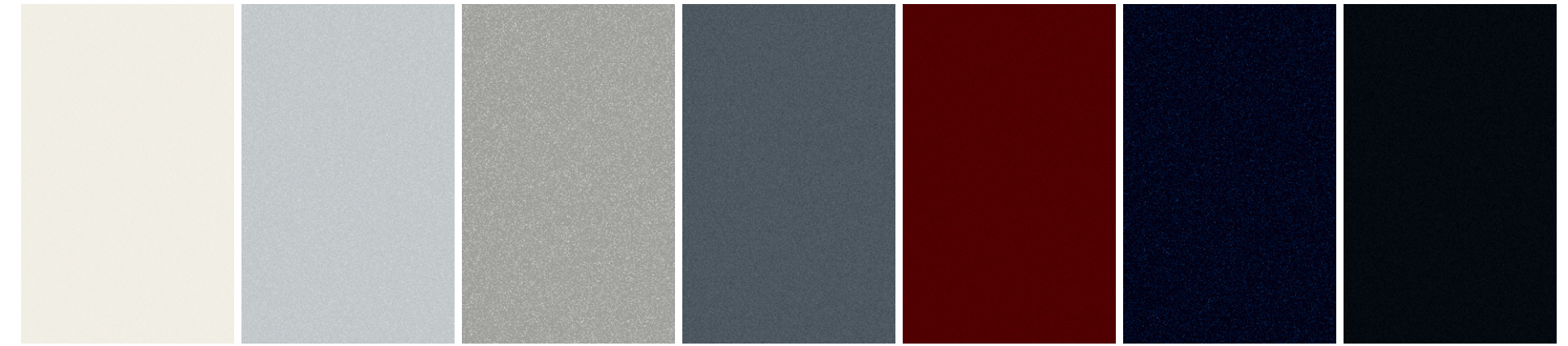


SE and TDI SE 17" Sonoma



SE with Sunroof, SE with Sunroof and Navigation, SEL Premium, and V6 SE 18" Bristol

7 exterior paint choices.



Candy White

Reflex Silver Metallic

Tungsten Silver Metallic

Platinum Gray Metallic

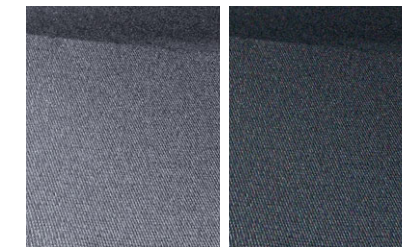
Opera Red Metallic

Night Blue Metallic

Black

Interior

CLOTH



Moonrock Gray

Titan Black

V-TEX LEATHERETTE



Black/Beige

Cornsilk Beige

Moonrock Gray

Titan Black

LEATHER WITH DINAMICA INSERTS



Cornsilk Beige

Moonrock Gray

Titan Black

Information Provided by:



Not all combinations of exterior paint and interior seating surfaces are available.

Lower aspect ratio tires can aid performance and handling; however, in order to avoid tire, rim, or vehicle damage, it is important that the inflation pressure is regularly checked and maintained at optimum levels. See owner's manual for details. Please also remember in making your selection that, while larger diameter wheels and lower aspect ratio tires can help deliver responsive handling, they may ride less comfortably and make more noise than other choices. These tires may wear more quickly than other choices. *Custom SunShields by Cover King are covered by a Cover King limited warranty. Please visit WVCarCovers.com for additional information.



Das Auto.



Beetle



Passat



Golf



GTI



Jetta



CC



Eos



Tiguan



Jetta SportWagen



Touareg

10 models to choose from.

VOLKSWAGEN FAMILY

Why VW. It's not a question. It's our philosophy behind why we think everyone deserves a better car. No matter where they are or where they're headed, people should have a quality car they can feel good about and enjoy for a long time. Today, we have ten different models

to choose from—all engineered with this same belief. And it's why we have the most vehicles on the road with over 100,000 miles.* Because Why VW is all about making sure that the VW you have today will still be the one you love to love tomorrow.

vw.com

©2013 Volkswagen of America, Inc. Printed in USA. Volkswagen of America, Inc., believes the information and specifications in this brochure to be correct at the time of printing. Specifications, standard features, options, fabrics, and colors are subject to change without notice. Some features may be unavailable when your vehicle is built. Some vehicles are pictured with options that may be available at extra cost or may not be available on some models. Ask your dealer about the availability of options and verify that the vehicle you ordered includes the equipment you ordered. Tires are supplied and warranted by their manufacturer. "Volkswagen," the Volkswagen logo, "Das Auto," "Passat," "TDI," "DSG," "TSL," and "Think Blue" are registered trademarks of Volkswagen AG. "Climatronic," "Car-Net," "Monster Mats," and "Side Curtain Protection" are trademarks or registered trademarks of Volkswagen Group of America, Inc. "Tiptronic" is a registered trademark of Dr. Ing. h.c. F. Porsche AG. "iPod" is a registered trademark of Apple Inc. All rights reserved. iPod is not included. "FSI" is a registered trademark of Audi AG. "Bluetooth" is a registered trademark of Bluetooth SIG, Inc. "Dynaudio" is a registered trademark of Continental Audio Electronic GMBH. FENDER is a trademark of Fender Musical Instruments Corporation. All rights reserved. "HomeLink" is a registered trademark of Prince Corporation, Holland, Michigan. Prince is a wholly owned subsidiary of Johnson Controls. Sirius Services: SiriusXM Satellite Radio, SiriusXM Traffic, and SiriusXM Travel Link subscriptions are sold separately or as a package after trial period and are continuous until you call SiriusXM at 1-866-635-2349 to cancel. See Customer Agreement for complete terms and more information at www.siriusxm.com. ©2013 Sirius XM Radio Inc. Sirius, XM, and all related marks and logos are trademarks of Sirius XM Radio Inc. Volkswagen DVD navigation depends on the signals from the worldwide Global Positioning Satellite network. The vehicle's electrical system, and existing wireless and satellite technologies, must be available and operating properly for the system to function. The system is designed to provide you with suggested routes to location addresses, destinations, and other points of interest. Changes in street names, construction zones, traffic flow, points of interest, and other road system changes are beyond the control of Volkswagen of America, Inc. Complete detailed mapping of lanes, roads, streets, toll roads, highways, etc., is not possible, therefore you may encounter discrepancies between the mapping and your actual location. Please rely on your individual judgment in determining whether or not to follow a suggested navigation route. Periodically, the mapping is updated and a new DVD will be required in order to maintain the latest navigation information available to us. These will be available for purchase from time to time at additional cost. For more information regarding any Volkswagen model, please call 1-800-DRIVE-VW or just look us up at vw.com. VW14PASBUS

*Average mileage based on Wolfram Alpha data (www.wolframalpha.com). Vehicles on the road based on Polk global registrations of 2011 models and older in 43 countries, as of September 2012.

