

2015 Passat



Das Auto.

Passat



The midsize without compromise. Who says when you reach a certain age you have to settle for a certain car? With the Passat, you gain everything without losing anything. A midsize that outsizes other midsizes, inside and out. Remember, it's only a family car when the family is in it. That's the Power of German Engineering.

How a quiet thunk screams quality.



Quality. When something is built solidly, you can feel it. Or, in this case, hear it. It all starts with laser seam welding that provides a premium build quality you can see and that solid door “thunk” you can hear every time you close the door. Add the available leather-wrapped steering wheel, Autumn Nut Burl trim, and leather seating surfaces, and you’ll understand how the Passat makes its quality apparent with all the premium materials to prove it.



The power to move you.



V6 SEL Premium shown in Fortana Red Metallic

And the needle.



Performance. When we set out to redefine the midsize sedan, power was a strong place to start. And the Passat has that in spades. From turbocharged engines to increased horsepower and impressive driving dynamics, you'll feel German-engineered performance every time you get behind the wheel. It's the kind of driving experience that might make you go in search of curvier roads or at least consider taking the long way home.



TDI SEL Premium shown in Candy White

*24 city/35 highway mpg (2014 Passat 1.8L TSI® manual transmission). EPA estimates. Your mileage will vary and depends on several factors, including your driving habits and vehicle condition. **795-mile range based on 43 mpg highway EPA estimates for a 2014 Passat 2.0L TDI Clean Diesel SE with manual transmission and an 18.5-gallon fuel tank. Range for 2014 Passat 2.0L TDI Clean Diesel with automatic transmission and an 18.5-gallon fuel tank is 740 miles based on 40 mpg highway EPA estimates. 2015 EPA estimates not available at time of printing. Your mileage will vary and depends on several factors, including your driving habits and vehicle condition.

Your power trip comes from three sources.



1.8T engine

We took a fun, zippy engine with impressive gas mileage and turbocharged it. Which means it gives you the boost of power you need while remaining incredibly efficient.* Imagine that.

170

HORSEPOWER

177

LBS/FT OF TORQUE



3.6L V6 engine

How about a little more power with your power? Unlike most sedans that don't even offer a V6, the available 3.6L, 280-hp engine delivers on power while the DSG® automatic transmission seamlessly shifts you into a higher gear.

280

HORSEPOWER

258

LBS/FT OF TORQUE



2.0L TDI® Clean Diesel

With up to 43 hwy mpg, it's easy to see why the TDI Clean Diesel gives the Passat more range than any other midsize sedan in its class.** And since it's turbocharged, we didn't have to sacrifice an ounce of power to be incredibly efficient.

150

HORSEPOWER

236

LBS/FT OF TORQUE

Personal space. The key to happiness.



Interior. In a world that keeps getting smaller, the interior of the Passat makes it a point to stay nice and roomy. The cabin seats five adults comfortably with best-in-class rear legroom that inspires envy in other midsize sedans.* It also has cargo space that can handle strollers, enough luggage for a family vacation, or the odd-size new addition to the family room. Roomy enough for you, your family, and your family's stuff. After all, you're all in this together.

*Based on manufacturers' published data comparing nonpremium midsize sedans.



TDI SEL Premium shown in Cornsilk Beige leather with Dinamica® inserts





V6 SEL Premium shown in Cornsilk Beige leather with Dinamica inserts

8-way power front seats with memory for the driver's seat. Create your comfort zone. The Passat has eight power-adjustable ways to make front-seat passengers happy. And a memory for what the driver prefers.

Leather seating surfaces with Dinamica® inserts. Sink down into the seats and you'll notice how Dinamica inserts temper the heat in warm weather and turn up the cozy factor on chilly days. Luxurious, indeed.**

Best-in-class rear legroom. Even the backseat has its perks. Your tallest friends and family members ride easy with over three feet of legroom. That's the most legroom in its class.*

Room for five. And your individuality.

Interior. The Passat is designed to suit your sense of style, as well as your sense of space, with craftsmanship that stands out in the design of the dash, the doors, and even the driver's side glovebox. Along with ample room for passengers to get comfortable, the Passat also provides a roomy place for you and your alone time.* Indulge in available interior ambient lighting, a power sunroof, and the realization that a lot of space and style can go a long way to making every journey more enjoyable.



Driver's side glovebox

Power tilting/sliding sunroof**

Autumn Nut Burl interior trim**

Climatronic® dual-zone automatic climate control**

Interior ambient lighting**

Heated front seats**

*Based on manufacturers' published data comparing nonpremium midsize sedans. **Feature available on select models.



Well-equipped. Well-played.

Technology. The Passat makes technology intuitive and convenient. Bluetooth® with audio streaming connects you to your friends, your spouse, and your own music effortlessly.* The available touchscreen navigation system can help you find where soccer practice is or it can direct you to new adventures in small-plate dining. And of course, you'll feel connected in all the most important ways with available Volkswagen Car-Net® connected car features.** Well-designed technology that helps you, well, enjoy the drive.



Volkswagen Car-Net

VW Car-Net keeps you synced and supported on the go. From safety and security to remote access and control, you've never had a connection quite like this.**

Steering wheel-mounted paddle shifters†

Keyless access with push-button start†

Rearview camera†



V6 SEL Premium shown in Cornsilk Beige leather with Dinamica inserts

Leather-wrapped, multi-function steering wheel. With integrated controls for easy access, grab the leather-wrapped steering wheel and take control of the road, your music, and perhaps even your destiny.†

RNS 510 Premium Navigation System. Discover more than just turn-by-turn directions home with the available touchscreen navigation that can also help you find points of interest and link up to your favorite music.†

Fender® Premium Audio System. With 400 watts, nine speakers including a subwoofer, and a name like Fender attached to the sound system, there is no doubt you'll rock on while you roll!†

*Requires compatible device. **VW Car-Net services provided by Verizon Telematics, Inc. Available on select models. Trial or paid subscription required to access all features. VW Car-Net services require vehicle cellular connectivity and availability of vehicle GPS signal; certain services may collect location information. See Terms of Service, Privacy Policy, and other details at www.vw.com/carnet/info. Always pay careful attention to the road, and do not drive while distracted. †Feature available on select models.

Safety that kicks in.

Safety. Not every day is your lucky day. That's why we have installed active safety measures that reduce the likelihood of an accident for those days and moments when a little extra caution is necessary. And in those instances where the curve ball really does come your way and an accident is unavoidable, multiple passive safety systems deploy to protect you and your passengers. You can't predict what's going to happen out there, but the safety measure we've included can help anticipate such moments and help keep you safer every day. When luck isn't on your side, Volkswagen safety is.



Dramatization*



PASSIVE

Safety cage

Adaptive airbags**

Intelligent Crash Response System (ICRS)†



ACTIVE

Seven stability-enhancing systems

Tire Pressure Monitoring System (TPMS)

When life throws a curve.



SE shown in Black

Safety cage. Sleek on the outside, tough on the inside. Underneath the exterior of the Passat is a tough safety cage designed to help protect each and every person inside in nearly any situation.

Adaptive airbags. You're virtually surrounded by safety in the Passat with four airbags, including mounted side airbags that help protect you and your passengers.**

Intelligent Crash Response System (ICRS). In the event of a collision, the Intelligent Crash Response System (ICRS) automatically unlocks the doors, turns off the fuel pump, and turns on the hazard lights.† Now that's thinking ahead.

Seven stability-enhancing systems. The Passat features seven active stability systems to help you stay in control when accelerating, braking, or simply cruising along. Which, in turn, enhances your confidence on the road.

Tire Pressure Monitoring System (TPMS). The Passat is sensitive, especially when it comes to its tires. To stay efficient and safe, the Tire Pressure Monitoring System alerts you to a loss of tire pressure so you know when to put more air in.

2014 IIHS Top Safety Pick. Along with being named a Top Safety Pick by the Insurance Institute for Highway Safety, the 2014 Passat was awarded a 5-star Overall Safety Rating from the National Highway Traffic Safety Administration.††

*This is a dramatization and does not depict what will happen in a collision. All bags will not inflate simultaneously in real-world collisions, and if multiple bags do deploy, they will be in various stages of inflating/deflating and will never all be inflated at the same time. **Airbags are supplemental restraints only and will not deploy under all crash circumstances. Always use safety belts and seat children only in the rear, using restraint systems appropriate for their size and age. †The Intelligent Crash Response System (ICRS) will only activate in a collision where the airbags deploy or safety belt pretensioners activate. ††Government star ratings are part of the National Highway Traffic Safety Administration (NHTSA's) New Car Assessment Program (www.safercar.gov). †††Top Safety Pick rating based on a "Good" in the 31 mph side-impact crash test, 40 mph moderate overlap frontal crash test, 40 mph rear-impact test, roof strength testing, and "Good" or "Acceptable" in the 40 mph small overlap frontal crash test performed by the IIHS. For details, visit www.iihs.org. See vw.com for more information on safety features.

Passat Specs

Performance	1.8T	TDI	V6
1.8L TSI, 16-valve, DOHC, in-line 4-cylinder turbocharged engine with intercooler and direct fuel injection; 170 hp, 184 lbs/ft of torque	●	–	–
2.0L, 16-valve, in-line 4-cylinder turbocharged clean diesel engine with common rail direct injection; 150 hp, 236 lbs/ft of torque	–	●	–
3.6L, 24-valve, DOHC, narrow-angle V6 with FSI® direct injection; 280 hp, 258 lbs/ft of torque	–	–	●
Power-assisted, front vented disc brakes; rear solid disc brakes	●	●	●
Electromechanical Power Steering with variable assistance	●	●	●
Independent front MacPherson struts and independent rear 4-link suspension	●	●	●
5-speed manual transmission	●	–	–
6-speed automatic transmission with Tiptronic® and Sport mode	○	–	–
6-speed manual transmission	–	●	–
6-speed DSG® automatic transmission with Tiptronic and Sport mode	–	○	●

Technology	1.8T	TDI	V6
6-speaker sound system with MP3- and WMA-compatible in-dash CD player and AM/FM radio	●	–	–
Premium VIII touchscreen sound system with HD Radio, MP3- and WMA-compatible in-dash 6-disc CD changer, SD memory card reader, and 8 speakers	○	●	●
RNS 315 navigation system with 5" color touchscreen in center console and SD memory card reader	○	○	–
RNS 510 navigation system with 6.5" color touchscreen in center console and SiriusXM Traffic™ with 4-year subscription and SiriusXM Travel Link™ with 3-month trial subscription, SD memory card reader, and 30GB hard disk	○	○	●
Fender® Premium Audio System	○	○	●
HomeLink® garage door opener, integrated into sun visor	○	○	●
Bluetooth® with audio streaming*	●	●	●
Volkswagen Car-Net® connected car features**	○	●	●
Media Device Interface (MDI) with iPod® cable*	○	●	●
SiriusXM® Satellite Radio with 3-month trial subscription	○	●	●
Keyless access with push-button start†	○	○	●
Remote start	○	○	●
AUX-in for portable audio player	●	●	●
Rearview camera	○	●	●

Interior	1.8T	TDI	V6
Manual air-conditioning	●	●	–
Climatronic® dual-zone automatic climate control with pollen filter	○	○	●
Multi-function trip computer featuring compass, trip time, trip length, average trip speed, average trip fuel consumption, current fuel consumption, miles to empty, radio station display, and personalizing function	○	●	●
2 remote key fobs with lock, unlock, trunk release, and panic button	●	●	●
Interior ambient lighting, front and rear	○	○	●
Automatic locking feature (doors lock when vehicle reaches 8 mph)	●	●	●
Illuminated vanity mirrors	○	●	●
3-spoke, multi-function steering wheel, height-adjustable with telescopic steering column	●	–	–
3-spoke, leather-wrapped, multi-function steering wheel, height-adjustable with telescopic steering column	○	●	●
Steering-wheel-mounted Tiptronic paddle shifters	○	–	●
Leather gearshift knob	○	●	●
Carbon-look interior trim	○	–	–
Autumn Nut Burl interior trim	○	○	●
8-way power driver's seat including power-adjustable lumbar support	○	●	–
8-way power front seats including power lumbar and memory for driver's seat	○	○	●
Center front armrest with integrated storage box	●	●	●
Rear center armrest, foldable with storage compartment	○	●	●
Glovebox, lockable	●	–	–
Glovebox, lockable and illuminated	○	●	●

Interior cont.	1.8T	TDI	V6
Fully upholstered luggage compartment	●	●	●
Cloth seating surfaces	●	–	–
V-Tex leatherette seating surfaces	○	●	–
Leather seating surfaces with Dinamica® inserts	○	○	●
Comfort sport seats	○	○	●
Self-dimming rearview mirror with on/off switch	○	●	●
Sport door sill protectors	○	–	–

Design	1.8T	TDI	V6
Rear spoiler	○	–	–
Fully galvanized sheet metal	●	●	●
Automatic headlights	●	●	●
Automatic Vehicle Illumination	●	●	●
Power tilting/sliding sunroof	○	○	●
Power-operated side mirrors with integrated turn signals	●	–	–
Heated power side mirrors with integrated turn signals	○	●	–
Heated power side mirrors with integrated turn signals with memory	○	○	●
Halogen reflector lens foglights with low-speed corner-illuminating feature	○	○	●
16" steel wheels with wheel covers	●	–	–
16" San Jose alloy wheel	○	–	–
17" Sonoma alloy wheel	○	●	–
18" Bristol alloy wheel	○	○	●
19" Luxor alloy wheel	○	–	–
Rain-sensing windshield wipers	○	○	●
Heated windshield washer nozzles	○	●	●

Safety	1.8T	TDI	V6
Immobilizer III theft-deterrent system	●	●	●
Driver and passenger front and side thorax airbag supplemental restraint system††	●	●	●
Side Curtain Protection® head airbags, front and rear††	●	●	●
3-point safety belts for outboard seating positions	●	●	●
LATCH (Lower Anchors and Tethers for Children) child seat anchor points	●	●	●
Electronic Stability Control (ESC), Anti-Slip Regulation (ASR), Electronic Differential Lock (EDL), and Engine Brake Assist (EBA)	●	●	●
Anti-lock Braking System (ABS), Electronic Brake-pressure Distribution (EBD), Hydraulic Brake Assist (HBA)	●	●	●
Intelligent Crash Response System (ICRS)‡	●	●	●
Tire Pressure Monitoring System (TPMS)	●	●	●

Quality	1.8T	TDI	V6
12-year/unlimited distance Limited Warranty Against Corrosion Perforation	●	●	●
5-year/60,000-mile (whichever occurs first) Powertrain Limited Warranty	●	●	●
3-year/36,000-mile (whichever occurs first) New Vehicle Limited Warranty	●	●	●
3-year/36,000-mile (whichever occurs first) Roadside Assistance‡‡	●	●	●
1-year/10,000-mile (whichever occurs first) no-charge scheduled Carefree Maintenance® Program‡	●	●	●

Dimensions	1.8T	TDI	V6
Wheelbase	110.4 in (2,083 mm)		
Front track	62.1 in (1,577 mm)		
Rear track	61.0 in (1,550 mm)		
Length	191.6 in (4,868 mm)		
Width	72.2 in (1,835 mm)		
Height	58.5 in (1,487 mm)		
Ground clearance	5.4 in (138 mm)		
Cargo volume	15.9 cu. ft. (0.45 cu. m)		

● Standard, at no additional cost

○ Optional, additional cost

– Not Available

Standard Wheels

1.8T S	●	Wolfsburg	○	SE	○	1.8T Sport	○
1.8T SE w/Sunroof & Navigation	●	TDI® SE w/Sunroof	●	TDI SE w/Sunroof & Sound	○	SEL Premium	●



16" steel wheel w/wheel cover



16" San Jose



17" Sonoma

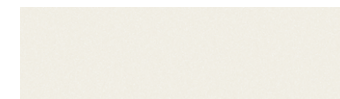


18" Bristol



19" Luxor

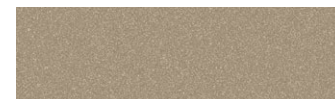
Exterior Colors



Candy White



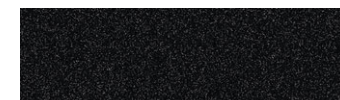
Reflex Silver Metallic



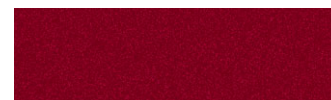
Titanium Beige



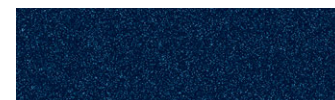
Platinum Gray Metallic



Urano Gray



Fortana Red Metallic



Night Blue Metallic



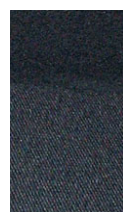
Black

Interior

Cloth



Moonrock Gray



Titan Black

V-Tex Leatherette



Corn silk Beige



Black and Beige



Moonrock Gray

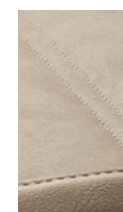
Leather with Dinamica Inserts



Black and Moonrock Gray



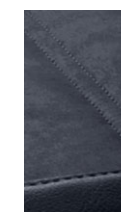
Titan Black



Corn silk Beige



Moonrock Gray



Titan Black

Package

Technology Package

Rearview camera; Premium VIII touchscreen sound system with HD Radio™; 8 speakers; SiriusXM Satellite Radio with 3-month trial subscription.

Available on S and Wolfsburg.

*Requires compatible device. **VW Car-Net services provided by Verizon Telematics, Inc. Available on select models. Trial or paid subscription required to access all features. VW Car-Net services require vehicle cellular connectivity and availability of vehicle GPS signal; certain services may collect location information. See Terms of Service, Privacy Policy and other details at www.vw.com/carnet/info. Always pay careful attention to the road, and do not drive while distracted. †Some Volkswagen models are equipped with a keyless ignition feature. The details as to how the system works can vary and Volkswagen owners should consult their owner's literature or an authorized Volkswagen dealer if they have further questions about the operation of this feature. Please note that Volkswagen warns against leaving the vehicle unattended with the engine running, particularly in enclosed spaces. ††Airbags are supplemental restraints only and will not deploy under all crash circumstances. Always use safety belts and seat children only in the rear, using restraint systems appropriate for their size and age. ‡The Intelligent Crash Response System (ICRS) will only activate in a collision where the airbags deploy or safety belt pretensioners activate. Not all collisions cause airbags to deploy or safety belt pretensioners to activate. ‡‡Roadside Assistance provided by Allstate. †††The Volkswagen Carefree Maintenance Program covers the vehicle's scheduled maintenance for one year or 10,000 miles, whichever occurs first, only on 2015 models. This program does not apply to 2009-2014 models. Some limitations apply. See dealer or vehicle maintenance program booklet for details, including scheduled service intervals.

Passat Accessories



Das Auto.



To see more accessories for your VW, visit www.parts.vw.com or see your Consultant.



18" Spokane Wheel



Illuminated Door Sill Protection Trim



Body Styling Kit



Rear Lip Spoiler



Pedal Caps



MojoMats® and Monster Mats®



Park Distance Control



Child Seat Protective Underlay



Volkswagen Carefree Maintenance® for 1 Year or 10,000 Miles.
Whichever occurs first. 2015 models. Some restrictions. See dealer or program for details.

Accessories installed prior to New Vehicle delivery are covered for the New Vehicle Limited Warranty period. Accessories installed by a Volkswagen authorized dealer during the New Vehicle Limited Warranty period are covered for the greater of: the remainder of the New Vehicle Limited Warranty period, or 12 months or 12,000 miles, whichever occurs first.

The Volkswagen Carefree Maintenance Program covers the vehicle's scheduled maintenance for one year or 10,000 miles, whichever occurs first, only on 2015 models. This program does not apply to 2009-2014 models. Some limitations apply. See dealer or vehicle maintenance program booklet for details, including scheduled service intervals.

©2014 Volkswagen Group of America, Inc. Printed in USA. Volkswagen of America, Inc., believes the information and specifications in this brochure to be correct at the time of printing. Specifications, standard features, options, fabrics, and colors are subject to change without notice. Some features may be unavailable when your vehicle is built. Some vehicles are pictured with options that may be available at extra cost or may not be available on some models. Ask your dealer about the availability of options and verify that the vehicle you ordered includes the equipment you ordered. Tires are supplied and warranted by their manufacturer. "Volkswagen," the Volkswagen logo, "Das Auto," "Passat," "DSG" and "TFSI" are registered trademarks of Volkswagen AG. "Climatronic," "Car-Net," "Carefree Maintenance," and the Carefree Maintenance logo are registered trademarks of Volkswagen Group of America, Inc. "iPod" is a registered trademark of Apple Inc. All rights reserved. iPod is not included. "FSI" is a registered trademark of Audi AG. "Bluetooth" is a registered trademark of Bluetooth SIG, Inc. FENDER is a registered trademark of Fender Musical Instruments Corporation. All rights reserved. Volkswagen DVD navigation depends on the signals from the worldwide Global Positioning Satellite network. The vehicle's electrical system, and existing wireless and satellite technologies, must be available and operating properly for the system to function. The system is designed to provide you with suggested routes to location addresses, destinations, and other points of interest. Changes in street names, construction zones, traffic flow, points of interest, and other road system changes are beyond the control of Volkswagen of America, Inc. Complete detailed mapping of lanes, roads, streets, toll roads, highways, etc., is not possible, therefore you may encounter discrepancies between the mapping and your actual location. Please rely on your individual judgment in determining whether or not to follow a suggested navigation route. Periodically, the mapping is updated and a new DVD will be required in order to maintain the latest navigation information available to us. These will be available for purchase from time to time at additional cost. For further information regarding any Volkswagen model, please call 1-800-DRIVE-VW or just look us up at vw.com. W15PASBUS