

# 2015 Touareg



Das Auto.

# Touareg



**All roads lead to Touareg. And vice versa.** In our newly refined luxury SUV, you're not afraid to haul, explore, work, or just get dirty. Especially when you have the latest available Driver Assistance features. For Touareg, luxury is defined by more than heated front seats and LED taillights. Instead, it's the confidence to go your own way, knowing you have a heck of a sidekick. **Isn't it time for German engineering?**



# Fast-forward to the fun parts of the map.

**Performance.** For us, it is all about how you get there. The Touareg simply doesn't feel like a typical SUV. It's German engineering at its finest that helps make the ride feel surprisingly nimble and agile, while maintaining all the power and presence of a luxury SUV. The Touareg combines 4MOTION® all-wheel drive, an 8-speed automatic transmission, and Servotronic® steering to help create an effortless and assured feeling few SUVs can achieve.



### 3.6L engine

Known for its smooth, seamless power delivery, this V6 with direct injection is also engineered to be fuel efficient.\* So step on the gas and this engine might even deliver an adrenaline rush too.\*\*

**280**  
HORSEPOWER

**265**  
LB-FT OF TORQUE



### 3.0L TDI® Clean Diesel engine

Getting up to 765 hwy miles† on a single tank, it's easy to see why the available TDI Clean Diesel engine gives the Touareg a greater range for adventures. And since it's turbocharged, we didn't have to compromise on the other end of the spectrum.\*\*

**240**  
HORSEPOWER

**406**  
LB-FT OF TORQUE



### 3.0L supercharged hybrid

Sure it's fuel efficient,†† but we didn't take the "S" out of SUV. This available supercharged hybrid‡‡ delivers a surprising amount of torque. So let go of your preconceived hybrid‡‡ notions and let the 3.0L, 380-hp supercharged V6 hybrid engine change your mind.

**380**  
HORSEPOWER

**428**  
LB-FT OF TORQUE



\*17 city/23 highway mpg (2015 Touareg 3.6L engine with automatic transmission). EPA estimates. Your mileage will vary and depends on several factors, including your driving habits and vehicle condition. \*\*Always obey local speed and traffic laws. †765-mile range based on 29 mpg highway EPA estimates for a 2015 Touareg 3.0L TDI Clean Diesel engine with automatic transmission and a 26.4-gallon fuel tank. Your mileage will vary and depends on several factors, including your driving habits and vehicle condition. ††20 city/24 highway mpg (2015 Touareg 3.0L supercharged hybrid with automatic transmission). EPA estimates. Your mileage will vary and depends on several factors, including your driving habits and vehicle condition. †††The Touareg Hybrid is available in the U.S. in very limited quantities and only at participating Volkswagen dealers.

Hybrid† shown in Reflex Silver Metallic





V6 Sport shown in Moonlight Blue Pearl with accessory Base Carrier Bars and Ski/Snowboard Attachment

## Endless possibilities need to start somewhere.

**Versatility.** The way a Touareg feels represents our best German engineering, and it doesn't end there. In a quick moment you can access the 64 cubic feet of cargo space, with the rear seats folded down. Especially when you don't have to take your key out of your pocket to unlock and open the available hands-free Easy Open liftgate. Just swipe your foot under the rear bumper. Load it up and let the adventure begin. The Touareg is the luxury SUV that's not afraid to get a little dirt under its bumpers.



- 64 cubic feet of cargo space with rear seats folded down
- 40/20/40-split folding seats
- Remote power liftgate
- Four 12V power outlets
- Available hands-free Easy Open liftgate
- Available electric rear seat release in cargo area



Bring your comfort zone  
along for the ride.



**Interior.** The list of refinements could fill its spacious cargo area. Because inside the Touareg, even the details have details. Like how the dual-zone climate control can help prevent pollutants from entering the cabin, or how the glovebox can be cooled to help keep your drinks chilled. Even the cargo space is easily accessible thanks to the available electric rear seat release. As you'll see, the little stuff is big to us.



V6 Executive shown in Terracotta Brown leather



- Dual-zone automatic climate control
- 8-way power-adjustable front seats
- Heated front seats
- Available power tilting/sliding panoramic sunroof
- Available Vienna leather seating surfaces
- Available 12-way power-adjustable front seats with 3-position memory
- Available heated steering wheel
- Available heated rear seats





V6 Executive with Driver Assistance Package shown in Black Anthracite Leather

## The world is literally at your fingertips.

**Technology.** Now you can be synced, connected, plugged in, and in touch while on the road,\* whether it's with the available 360-degree Area View exterior camera system or an available navigation system with 8" color touchscreen and voice commands. For a full-out entertaining option, listen to SiriusXM® Satellite Radio with an available 620-watt, 10-speaker Dynaudio® premium sound system that immerses you in a rich, detailed soundstage. All of it helps create an experience that is as effortless as it is advanced.

Touchscreen sound system

Bluetooth® technology with audio streaming for compatible devices

Bi-Xenon headlights with LED Daytime Running Lights (DRL)

Available Dynaudio premium sound system

Available touchscreen navigation with 3D landmarks

Available keyless access with push-button start

Available SiriusXM Traffic™ with 4-year subscription\*\*



\*Always pay careful attention to the road, and do not drive while distracted. \*\*SiriusXM Traffic and SiriusXM Travel Link subscriptions are sold separately or as a package after trial period and are continuous until you call SiriusXM at 1-866-635-2349 to cancel. See Customer Agreement for complete terms and more information at [www.siriusxm.com](http://www.siriusxm.com). ©2014 Sirius XM Radio Inc. Sirius, XM, and all related marks and logos are trademarks of Sirius XM Radio Inc.



# You can't predict every situation.

**Safety and Driver Assistance.** The Touareg was designed to be as helpful as it is dynamic. It starts with sophisticated safety systems, like our Intelligent Crash Response System,\* before surrounding all those features with a protective, high-strength safety cage. And with the new available Driver Assistance features, you can have a better sense of potential dangers around you. When it comes to our drivers, we're quite protective.



Dramatization.\*\*



PASSIVE

Safety cage

Adaptive airbags†

Intelligent Crash Response System (ICRS)\*



ACTIVE

Seven stability-enhancing systems

Tire Pressure Monitoring System (TPMS)

# But now you can plan for it.



V6 Executive shown in Deep Black Pearl

## Safety Features

**Adaptive airbags.** To help enhance protection, the front airbags can tailor their operation based on crash severity and even the weight of the occupants.† And pressure sensors within the doors help accelerate the side airbags' response time in side impacts.

**Intelligent Crash Response System (ICRS).** In the event of a collision that activates the airbags in a Touareg, the ICRS will automatically disable the fuel pump, unlock all the doors, and turn on the hazard lights.\* It's how your Volkswagen helps look out for you when you need it most.

**Seven stability-enhancing systems.** The Touareg features seven stability systems to help you maintain control when accelerating, braking, and while cruising. And it can help enhance your sense of confidence on the road too.

**Tire Pressure Monitoring System (TPMS).** The TPMS helps alert you when the pressure of one of your tires is low, which can help improve overall tire life, handling, and fuel economy.†† A tireless effort that can help you and your tires.

## Available Driver Assistance Features

**Side Assist (Lane Change Assistant) and Lane Assist (Lane Departure Warning).** At cruising speeds, proximity sensors can help warn you when another vehicle is coming from behind or alongside you. And the Lane Departure Warning front-facing camera can help alert you by vibrating the steering wheel if you unintentionally drift outside of your lane.‡

**Adaptive Cruise Control (ACC) and Front Assist with Autonomous Emergency Braking.** If you're in cruise control and get a little too close for comfort to a vehicle in front of you, ACC will automatically adjust your speed to help maintain a proper distance. Or if Front Assist detects a critical situation when approaching a vehicle too fast, it can automatically brake for you.‡‡

\*The Intelligent Crash Response System (ICRS) will only activate in a collision where the airbags deploy or safety belt pretensioners activate. Not all collisions cause airbags to deploy or safety belt pretensioners to activate. \*\*This is a dramatization and does not depict what will happen in a collision. All bags will not inflate simultaneously in real-world collisions, and if multiple bags do deploy, they will be in various stages of inflating/deflating and will never all be inflated at the same time. †Airbags are supplemental restraints only and will not deploy under all crash circumstances. Always use safety belts and seat children only in the rear, using restraint systems appropriate for their size and age. ††17 city/23 highway mpg (2015 Touareg 3.6L engine with automatic transmission). EPA estimates. Your mileage will vary and depends on several factors, including your driving habits and vehicle condition. ‡Do not rely solely on Side Assist or Lane Assist; they are not substitutes for attentive driving. Always check surrounding traffic and use your turn signal. These features have important limitations; see Owner's Manual for further details. ‡‡Do not rely solely on Front Assist with Autonomous Emergency Braking. It is designed to help minimize the effects of certain collisions and is not a substitute for attentive driving. This feature has important limitations; see Owner's Manual for further details.

# Touareg Specs

Design	Sport	Lux	Exec	Hybrid
Bi-Xenon high-intensity headlights with LED Daytime Running Lights (DRL) and Adaptive Front-lighting System (AFS)	●	●	●	●
Halogen reflector lens foglight with low-speed corner-illuminating feature	●	●	●	●
Power-operated, heated side mirrors with integrated turn signals	●	–	–	–
Power-operated, heated, power-folding side mirrors with memory and integrated turn signals	–	●	●	●
Auto-dimming driver's side exterior mirror	–	●	●	●
Power tilting/sliding panoramic sunroof	–	●	●	●
Remote opening and closing power liftgate	●	●	●	●
Hands-free Easy Open liftgate	T/TT	●	●	●
Trailer hitch	O/T/TT	●	●	●
LED taillights	●	●	●	●
Rain-sensing windshield wipers with heated washer nozzles	●	●	●	●
18" alloy wheels	●	–	–	–
19" alloy wheels	–	●	–	●
20" alloy wheels	–	–	●	–
Performance	Sport	Lux	Exec	Hybrid
3.6L, 24-valve, DOHC, narrow-angle V6 with FSI® direct fuel injection; 280 hp, 265 lb-ft of torque	●	●	●	–
3.0L, 24-valve, DOHC, V6, TDI® Clean Diesel engine with common rail direct injection; 240 hp, 406 lb-ft of torque	○	○	○	–
3.0L, supercharged V6 gas engine and electric motor, combined; 380 hp, 428 lb-ft of torque*	–	–	–	●
4MOTION® all-wheel-drive system	●	●	●	●
Servotronic® steering system (power assisted)	●	●	●	●
Double wishbone front and rear independent suspension	●	●	●	●
8-speed automatic transmission	●	●	●	●
Interior	Sport	Lux	Exec	Hybrid
Climatronic® dual-zone automatic climate control with pollen filter	●	●	●	●
Premium color multi-function trip computer with trip time, trip length, average trip speed, average trip fuel consumption, current fuel consumption, miles to empty, radio station display, and personalizing function	●	●	●	●
2 radio-frequency remote transmitter key fobs with lock, unlock, trunk release, panic button, and selectable access valet key feature	●	●	●	●
115V power outlet	●	●	●	●
Self-dimming interior rearview mirror with on/off switch	●	●	●	●
8-way power-adjustable front seats	●	–	–	–
12-way power-adjustable driver's seat including 4-way power lumbar support and 3-position memory function for driver's seat and side mirrors	–	●	●	–
12-way power adjustable front seats including 4-way power lumbar support and 3-position memory function for front seats, side mirrors, and power steering column	–	–	–	●
Rear side-window sunshades	–	–	●	●
Heated front seats	●	●	●	●
Heated rear seats	–	–	●	●
3-spoke, leather-wrapped, multi-function steering wheel	●	●	–	–
Heated 3-spoke, leather-wrapped, multi-function steering wheel	–	DAP	●	●
Center front armrest with integrated storage	●	●	●	●
4 cupholders, 2 front and 2 rear	●	●	●	●
Glovebox, lockable and illuminated, with adjustable cooling feature	●	●	●	●
Fully upholstered luggage compartment	●	●	●	●
Stainless steel scuff plates on door sills	–	–	●	●
Stainless steel pedal covers	–	–	●	●
V-Tex leatherette seating surfaces	●	–	–	–
Vienna leather seating surfaces	–	●	●	●

- Standard, at no additional cost
  - Optional, additional cost
  - Not Available
- T Sport with Technology  
 TT TDI Sport with Technology  
 DAP Requires Driver Assistance Package

Technology	Sport	Lux	Exec	Hybrid
RCD-550 sound system with 6.5" color touchscreen in center console, HD Radio,™ SD memory card reader, AUX-in for portable audio players, and 8 speakers	●	–	–	–
RNS-850 navigation system with 8" color touchscreen in center console, 3D landmarks, CD/DVD player, advanced audio converting, SD card reader, 60GB hard drive, AUX-in, HD Radio, and 8 speakers	T/TT	●	●	●
Rearview camera	T/TT	●	–	–
Area View 360° exterior camera system	–	–	●	●
SiriusXM® Satellite Radio with 3-month trial subscription	●	●	●	●
SiriusXM Traffic™ with 4-year subscription	T/TT	●	●	●
Media Device Interface (MDI)* with iPod® cable	●	●	●	●
Bluetooth® technology with audio streaming for compatible devices	●	●	●	●
Dynaudio® premium sound system, with 10 speakers and amplifier	–	–	●	–
Park Distance Control (PDC) with front and rear proximity sensors	–	●	●	●
Keyless access with push-button start	T/TT	●	●	●
Side Assist (Lane Change Assistant)	T/TT	●	●	●
Lane Assist (Lane Departure Warning)	–	DAP	DAP	●
Adaptive Cruise Control	–	DAP	DAP	●
Front Assist with Autonomous Emergency Braking	–	DAP	DAP	●
Automatic Post-Collision Braking System	●	●	●	●

Safety	Sport	Lux	Exec	Hybrid
Driver and passenger front and side thorax airbag supplemental restraint system**	●	●	●	●
Side Curtain Protection® head airbags, front and rear**	●	●	●	●
3-point safety belts for all 5 seating positions; belt force limiters for all 5 seats, and belt pretensioners for front seats	●	●	●	●
LATCH (Lower Anchors and Tethers for CHildren) child seat anchor points	●	●	●	●
Anti-lock Braking System (ABS), Electronic Brake-pressure Distribution (EBD), and Hydraulic Brake Assist (HBA)	●	●	●	●
Electronic Stability Control (ESC), Anti-Slip Regulation (ASR), Electronic Differential Lock (EDL), and Engine Braking Assist (EBA)	●	●	●	●
Intelligent Crash Response System (ICRS)†	●	●	●	●
Tire Pressure Monitoring System (TPMS)	●	●	●	●

Quality	Sport	Lux	Exec	Hybrid
12-year/unlimited mileage Limited Warranty Against Corrosion Perforation**	●	●	●	●
10-year/100,000-mile (whichever occurs first) Powertrain Limited Warranty††	●	●	●	●
3-year/36,000-mile (whichever occurs first) New Vehicle Limited Warranty††	●	●	●	●
3-year/36,000-mile (whichever occurs first) Roadside Assistance‡	●	●	●	●
1-year/10,000-mile (whichever occurs first) no-charge scheduled Carefree Maintenance® Program††	●	●	●	●

Dimensions	
Wheelbase	113.9 inches (2,893 mm)
Front track	65.2 inches (1,656 mm)
Rear track	66.0 inches (1,676 mm)
Length	188.8 inches (4,795 mm)
Width	76.4 inches (1,940 mm)
Height	68.2 inches (1,732 mm)
Ground clearance	7.9 inches (201 mm)
Front track (Hybrid)	65.0 inches (1,650 mm)
Rear track (Hybrid)	65.7 inches (1,670 mm)
Height (Hybrid)	68.4 inches (1,737 mm)
Ground clearance (Hybrid)	8.0 inches (202 mm)

# Standard Wheels



Sport and Sport with Technology 18" Arica



Lux 19" Salvador

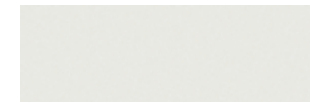


Hybrid 19" Girona



Executive 20" Montauk

# Exterior Colors



Pure White



Reflex Silver Metallic



Sand Gold Metallic



Canyon Gray Metallic



Flint Gray Metallic



Black Oak Brown Metallic



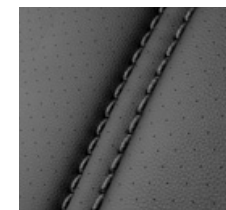
Moonlight Blue Pearl



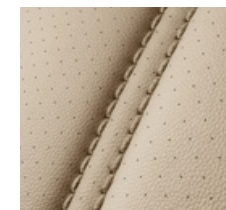
Deep Black Pearl

# Interior

## V-Tex Leatherette

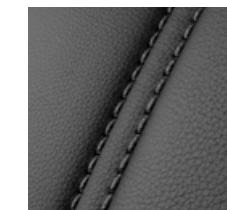


Black Anthracite



Cornsilk Beige

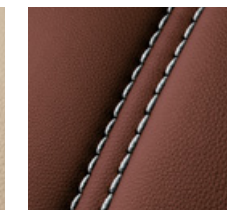
## Vienna Leather



Black Anthracite



Cornsilk Beige



Terracotta Brown

# Packages

## Driver Assistance Package

Adaptive Cruise Control; Front Assist with Autonomous Emergency Braking; Lane Assist (Lane Departure Warning); heated, leather-wrapped, multi-function steering wheel.

Available on Lux

## Driver Assistance Package

Adaptive Cruise Control; Front Assist with Autonomous Emergency Braking; Lane Assist (Lane Departure Warning).

Available on Executive

\*The Touareg Hybrid is available in the U.S. in very limited quantities and only at participating dealers. \*\*Airbags are supplemental restraints only and will not deploy under all crash circumstances. Always use safety belts and seat children only in the rear, using restraint systems appropriate for their size and age. †The Intelligent Crash Response System (ICRS) will only activate in a collision where the airbags deploy or safety belt pretensioners activate. Not all collisions cause airbags to deploy or safety belt pretensioners to activate. ††See dealer or warranty booklet for details; some restrictions apply. ‡Roadside Assistance provided by Allstate. †††The Volkswagen Carefree Maintenance Program covers the vehicle's first scheduled maintenance for one year or 10,000 miles, whichever occurs first, only on 2015 models. This program does not apply to 2009-2014 models. Some limitations apply. See dealer or vehicle maintenance program booklet for details.



# Touareg Accessories



Das Auto.



To see more accessories for your VW, visit [www.parts.vw.com](http://www.parts.vw.com) or see your Consultant.



Base Carrier Bars with Kayak Holder Attachment



MojoMats® and Monster Mats®



License Plate Frame



Reinforced Nylon Disposal Bag



Valve Stem Caps



Aluminum Side Steps



Tow and Ball Mount



Rear Hatch Spoiler



**Volkswagen Carefree Maintenance® for 1 Year or 10,000 Miles.**  
Whichever occurs first. 2015 models. Some restrictions. See dealer or program for details.

Accessories installed prior to new vehicle delivery are covered for the New Vehicle Limited Warranty period. Accessories installed by a Volkswagen authorized dealer during the New Vehicle Limited Warranty period are covered for the greater of: the remainder of the New Vehicle Limited Warranty period, or 12 months or 12,000 miles, whichever occurs first.

The Volkswagen Carefree Maintenance Program covers the vehicle's first scheduled maintenance for one year or 10,000 miles, whichever occurs first, only on 2015 models. This program does not apply to 2009-2014 models. Some limitations apply. See dealer or vehicle maintenance program booklet for details, including scheduled service intervals.

[vw.com](http://vw.com)

©2014 Volkswagen Group of America, Inc. Printed in USA. Volkswagen of America, Inc., believes the information and specifications in this brochure to be correct at the time of printing. Specifications, standard features, options, fabrics, and colors are subject to change without notice. Some features may be unavailable when your vehicle is built. Some vehicles are pictured with options that may be available at extra cost or may not be available on some models. Ask your dealer about the availability of options and verify that the vehicle you ordered includes the equipment you ordered. Tires are supplied and warranted by their manufacturer. "Volkswagen," the Volkswagen logo, "Das Auto," "Touareg," "DSG," and "TSI" are registered trademarks of Volkswagen AG. "Climatronic," "Car-Net," "Carefree Maintenance," and the Carefree Maintenance logo are registered trademarks of Volkswagen Group of America, Inc. "iPod" is a registered trademark of Apple Inc. All rights reserved. iPod is not included. "FSI" is a registered trademark of Audi AG. "Bluetooth" is a registered trademark of Bluetooth SIG, Inc. FENDER is a registered trademark of Fender Musical Instruments Corporation. All rights reserved. Volkswagen DVD navigation depends on the signals from the worldwide Global Positioning Satellite network. The vehicle's electrical system, and existing wireless and satellite technologies, must be available and operating properly for the system to function. The system is designed to provide you with suggested routes to location addresses, destinations, and other points of interest. Changes in street names, construction zones, traffic flow, points of interest, and other road system changes are beyond the control of Volkswagen of America, Inc. Complete detailed mapping of lanes, roads, streets, toll roads, highways, etc., is not possible, therefore you may encounter discrepancies between the mapping and your actual location. Please rely on your individual judgment in determining whether or not to follow a suggested navigation route. Periodically, the mapping is updated and a new DVD will be required in order to maintain the latest navigation information available to us. These will be available for purchase from time to time at additional cost. For further information regarding any Volkswagen model, please call 1-800-DRIVE-VW or just look us up at [vw.com](http://vw.com). VW15TOUSBUS