



THE ECONOMY CAR FOR TODAY'S ECONOMY.  
**SUBARU 1976**

The economy has driven the cost of buying and owning the average economy car right through the roof.

So, at Subaru, we build and sell an economy car with a very unique difference these days: it's economical.

### **AN AFFORDABLE PRICE.**

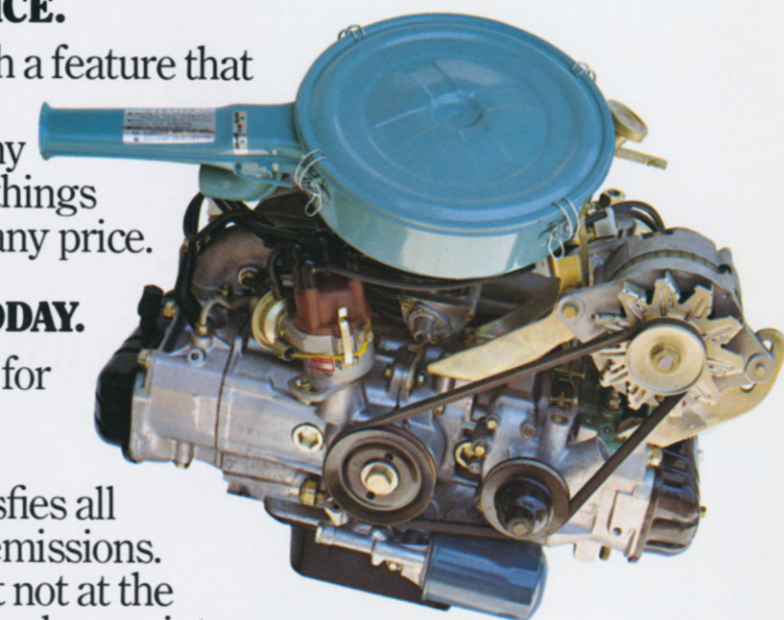
Each Subaru comes equipped with a feature that everybody is high on. A low price.

But besides giving you an economy car with a low price, we give you some things you can't get on some economy cars at any price.

### **AN ENGINE ENGINEERED FOR TODAY.**

Part of designing a car that's right for today's economy is designing an engine that's right for today's economy.

That means an engine which satisfies all government requirements on exhaust emissions. One that delivers good gas mileage. But not at the expense of performance. And one that makes maintenance easy for you. And the manufacturer.



Unfortunately, the way most car manufacturers meet emission requirements is with a lot of expensive add on equipment that restricts performance of their engines. Like catalytic convertors, air pumps and metering systems. The result can be an engine that satisfies one standard at the expense of all the others.

Fortunately, at Subaru we didn't do that. Instead, we designed a cleaner burning, simpler engine. One that meets all the emission standards without adding a lot of extra equipment to our engine. Or extra cost to the price of our car.

It's our unique Quadrozontal SEEC-T engine. It has four cylinders. It's liquid cooled. And horizontally opposed, which means it vibrates less. So there's less wear and tear on the engine. And your wallet.

Now that we've spelled out Quadrozontal for you, we'll spell out SEEC-T. It means Subaru Exhaust Emission Control-Thermal and Thermo-dynamic System.

This is an air introduced combustion control system.

Although that makes for quite a mouthful, it also makes for a cleaner burning engine without add-on emission control devices that can need expensive



tune ups and replacement. And that makes our engine more efficient and more economical in the long run.

### **A LOT OF MILES TO THE GALLON.**

An important economical feature of our Quadrozontal SEEC-T engine is the gas mileage it delivers on all three types of gas. It's so remarkable it makes a lot of other economy cars look like gas guzzlers. And with gas prices what they are today, that means it will be a long time before your Subaru or your wallet goes from Full to Empty.

### **FRONT WHEEL DRIVE.**

Front wheel drive is standard equipment on every Subaru. And that means better handling and traction are standard too. Because the wheels that drive our car also steer it. And the weight of the engine is over the drive wheels for better stability. You see, at Subaru, we think an economy car without front wheel drive is a little behind the times.

### **IMPORTANT EXTRAS AT NO EXTRA COST.**

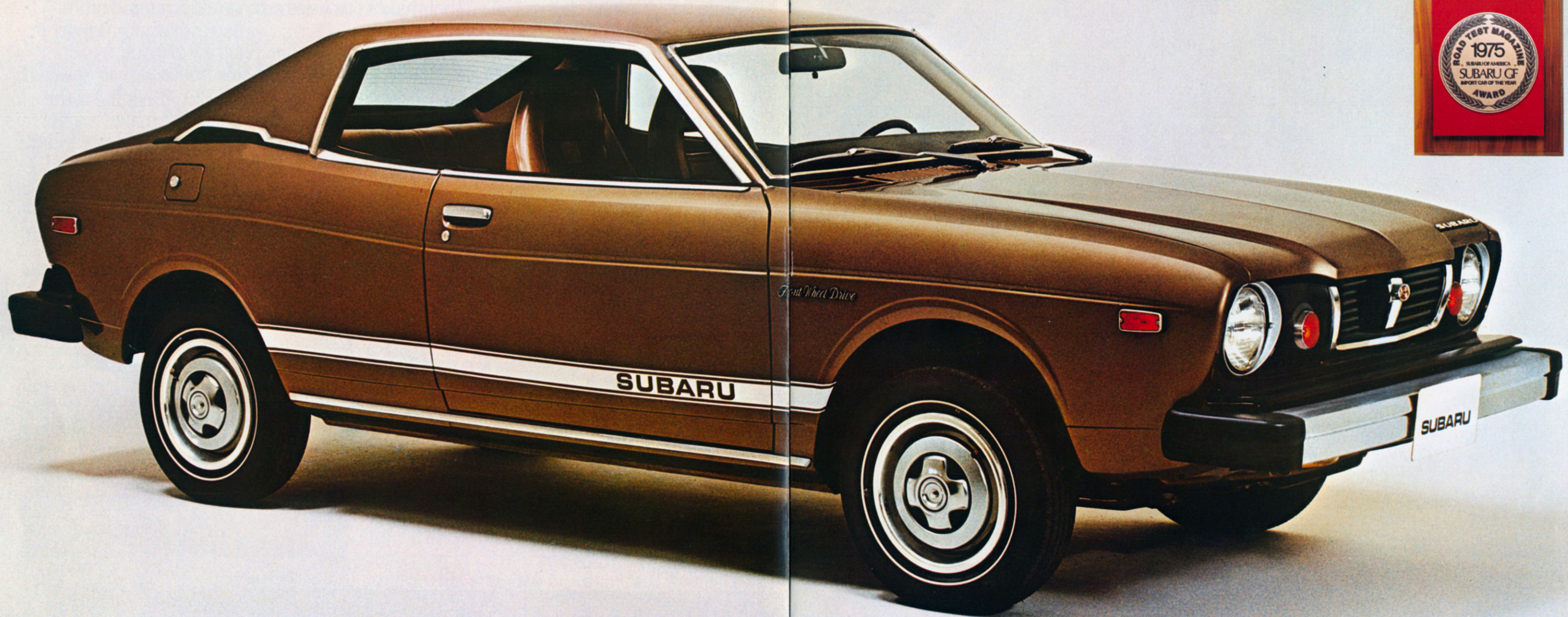
Included in the basic Subaru low price are features like: \*a push button radio, whitewalls or radials, tinted glass, power assisted front disc brakes and an electric rear window defogger.

And since all these extras don't cost extra, the price of a Subaru stops just about where the prices on some other economy cars start.

So, if the economy has you singing the economy car blues go for a test drive in a Subaru. We think that's all it'll take to get you singing the praises of the economy car for today's economy.

\*Certain features mentioned not standard on 2 Door Sedan.





Wheel trim rings and lower body rally stripe, as shown in photo above, are extra cost options.

## SUBARU GF HARDTOP

Our GF Hardtop is all Subaru practicality with luxury and elegance added as standard equipment.

On the inside, you'll find the kinds of things you'd expect to find in a luxury car. Like plush wall to wall carpeting. An AM-FM radio. An electric clock. Tachometer. A center console. And a dash with dash.

And to go with its inner beauty, there's

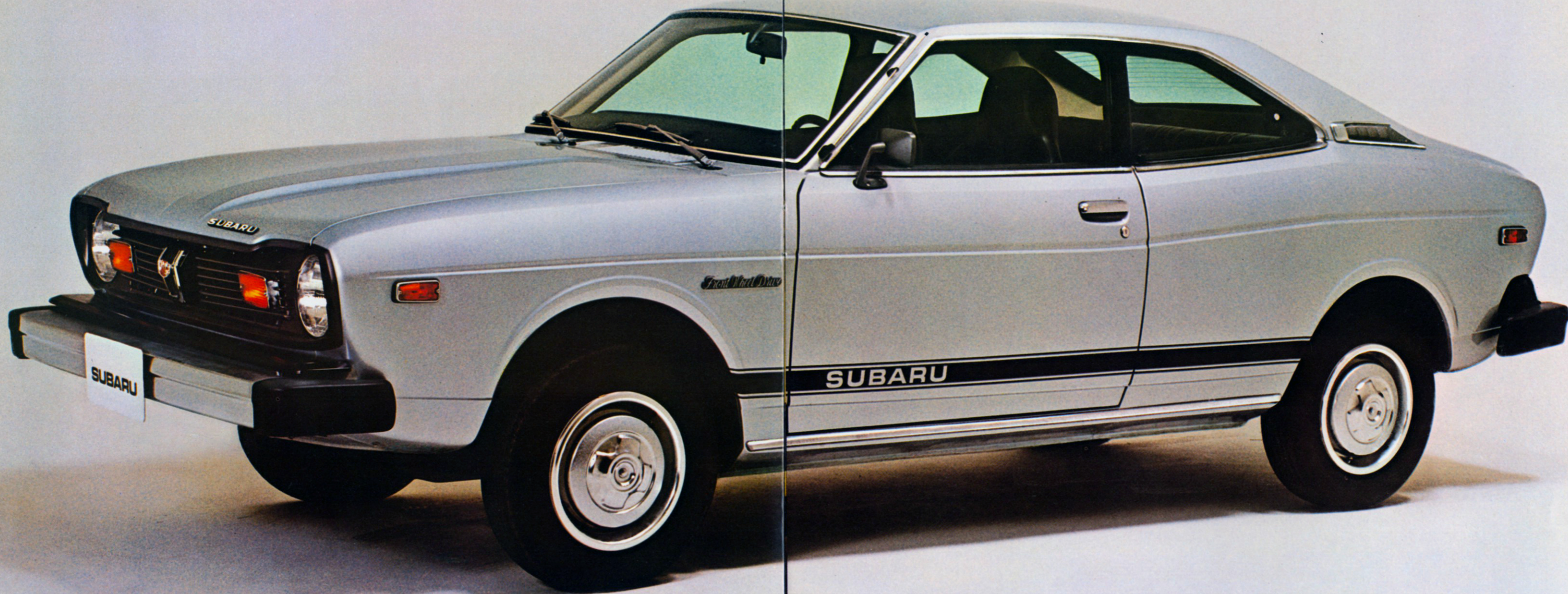
outer beauty. A landau roof. Whitewall radial tires. And the kind of body styling that gets second looks.

What's more, the GF Hardtop also comes with another feature that's a luxury by anybody's standards. Economy.

Because in addition to our gas stingy Quadrozontal SEEC-T engine, the GF Hardtop is equipped with a 5 speed transmission. A combination that delivers remarkable gas mileage even by economy car standards.

And if you don't like to shift for yourself, there's also an optional automatic transmission available.

All of which makes the GF Hardtop a car that gives you the best of both worlds. In a car that's out of this world.



Wheel trim rings and lower body rally stripe, as shown in photo above, are extra cost options.

## **SUBARU DL COUPE**

Our DL Coupe is too sporty to be just another economy car. And too economical to be just another sports car.

So, we'd have to say it's the perfect blend of both.

Beneath its racy exterior styling, we've equipped it with sports car features like a

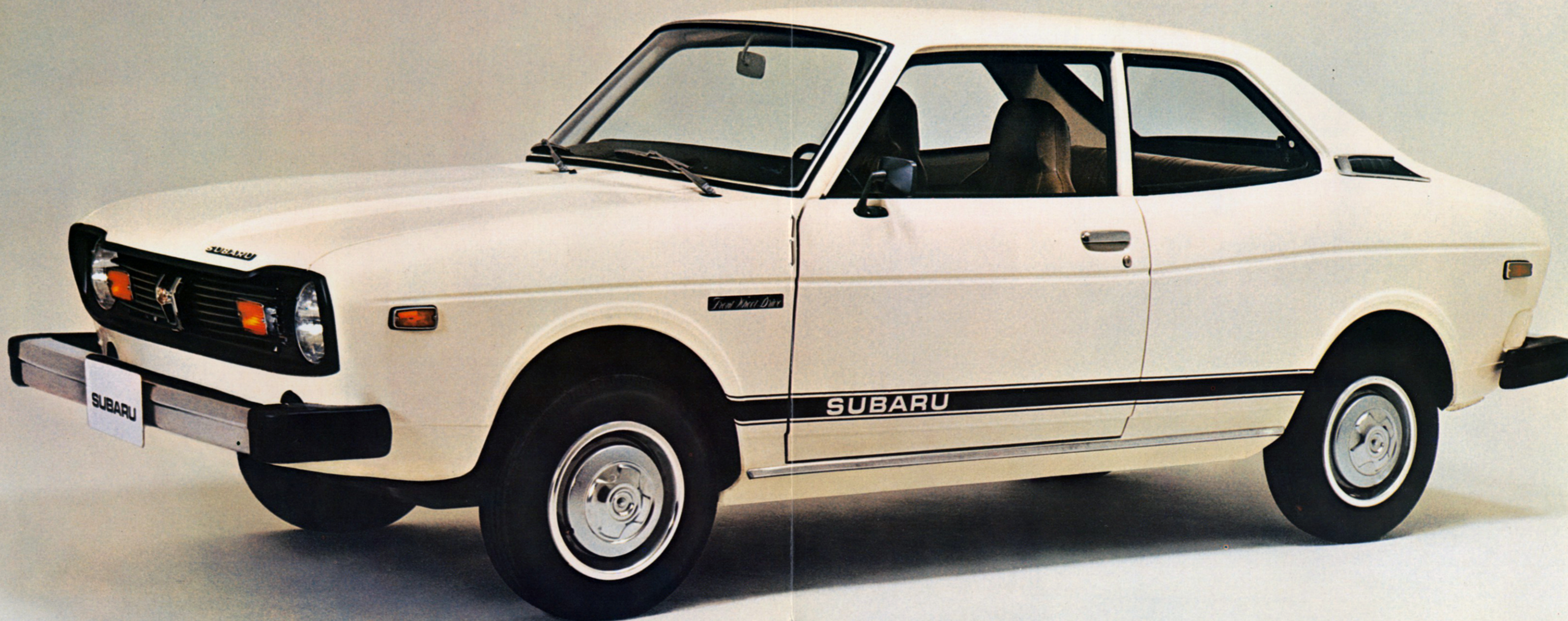
5 speed transmission. Rack and pinion steering. Independent front and rear suspension. And power assisted front disc brakes for sure stops.

To make it economical, we've given it a low price. An engine that delivers great gas mileage. And standard equipment like a push button AM radio. Tinted glass. Fully reclining bucket seats. An electric rear window defogger. And radial tires. At no extra cost.

And we've also included a feature that

you won't get on most sports cars. Not to mention most economy cars. Front wheel drive. It's standard equipment. Which means stability, better handling and traction are standard too.

All of which makes us think, the DL Coupe is the car to own if you want people to think you're going places. Even if you've already arrived.



Wheel trim rings and lower body rally stripe, as shown in photo above, are extra cost options.

## SUBARU 2-DOOR SEDAN

Our new 2 door sedan is the standard other economy cars will be measured by.

That's because it's equipped with something that's rare these days. A remarkably low price.

But we weren't content just to give you an economy car with a low price. So we built in a feature you can't get on any economy car at

any price. The excellence of engineering standards and performance qualities common to every Subaru.

Here are some other Subaru features you pay nothing extra for, but are worth a lot: front wheel drive for better handling, traction and stability. Radial ply tires for better gas mileage. Our unique Quadrozontal SEEC-T engine for a quieter, smoother ride. And the precision of rack and pinion steering to make driving easier on you.

Then to bring all this to a stop that's safe and sure, we also include power assisted front disc brakes.

You see, at Subaru, we don't believe that you have to spend a lot of money to buy a lot of economy car.

And that's what makes Subaru the economy car for today's economy.



Wheel trim rings and lower body rally stripe, as shown in photo above, are extra cost options.

## SUBARU DL 4-DOOR SEDAN

These days most people find it impossible to find everything they want in a car—in one car.

With this in mind, we've designed a car that combines economy with luxury and convenience. Our DL 4 Door Sedan.

For economy, we've equipped it with a low price. Our Quadrozontal SEEC-T engine that delivers great gas mileage. And the kind of

workmanship that makes it a car that's built to last.

For luxury and convenience there's an electric rear window defogger. Push button AM radio. Fully reclining front bucket seats. And wall to wall carpeting. At no extra cost. Plus an optional automatic transmission.

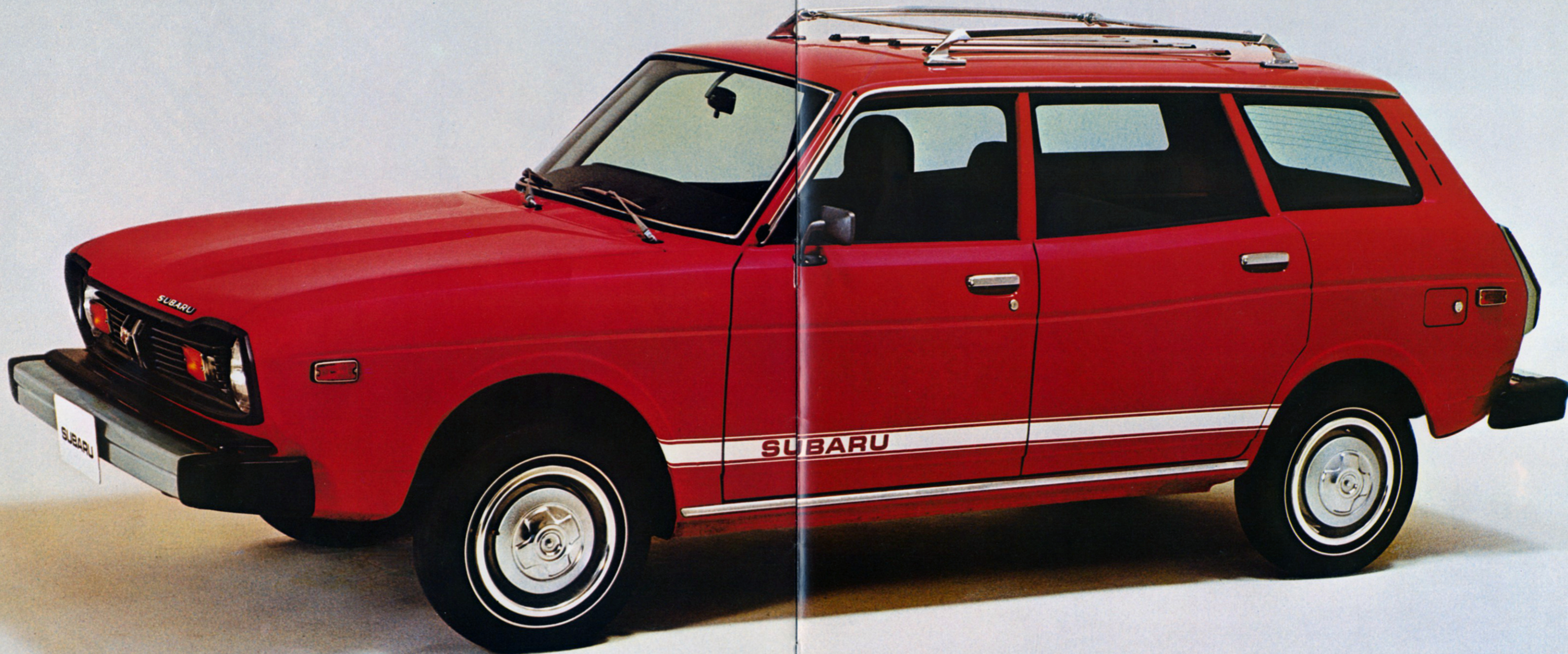
In addition, this year we've made an addition to our back seat. More leg room.

And naturally, this Subaru has the handling and performance features of front wheel

drive. Rack and pinion steering. And radial ply tires. All standard equipment.

What's more, for people who want the features of our 4 Door, but don't need the extra 2 doors, there's the Subaru DL 2 Door Sedan.

So, you might say our DL Sedans have turned your dream car into a reality.



Wheel trim rings, lower body rally stripe and luggage rack, as shown in photo above, are extra cost options.

## **SUBARU DL STATION WAGON**

Most station wagons are designed to be practical cars. But our DL Station Wagon has added a new dimension to that practicality.

Unlike the ordinary station wagon, it has the kind of low price you've come to expect from a Subaru. And since it's equipped with our Quadrozontal SEEC-T engine, it gets a lot of miles out of a gallon of gas.

What's more, our engine burns cleaner

thanks to its air introduced combustion control system. So it doesn't need add-on emission control devices that can need expensive tuneups and replacement.

But we didn't stop there.

Because our DL wagon also adds a new dimension to station wagon passenger comfort.

Its standard equipment includes an electric rear window defogger that clears things up in a hurry. A push button AM radio for travelling music. Independent front

and rear suspension to make riding smoother. And the stability of front wheel drive to make driving easier on rough roads or in rough weather.

With all these added dimensions, we think it'll be tough for any other wagon to measure up to our wagon.



Wheel trim rings, lower body rally stripe and luggage rack, as shown in photo above, are extra cost options.

## **SUBARU 4-WHEEL DRIVE WAGON**

The Subaru 4 wheel drive wagon is a multi-purpose station wagon equipped with 4 wheel drive.

So this remarkable vehicle combines the roominess of a wagon with the good looks and riding comfort of a passenger car and the sure-footedness of a multi-purpose vehicle.

For better handling and stability when the going is slippery or wet, this wagon has the

advantage of full time front wheel drive. And when things go from bad to worse, 4 wheel drive can be engaged with just the flick of a lever from inside the car.

And that makes this wagon the perfect car for the person who strays from the beaten paths.

What's more, the Subaru 4 wheel drive wagon comes with a push button AM radio. Wall to wall carpeting. Reclining front bucket seats. And a rear windshield wiper and

washer as standard equipment. So it's also a car that carries almost all the comforts of home when you're away from home.

All in all, you might say our 4 wheel drive wagon is great for roughing it in comfort. And a great comfort on rough roads.



# SPECIFICATIONS AND COLORS

Body Style	OVERALL SIZE					STANDARD ENGINE					
	Transmission	Wheel Base (in.)	Length (in.)	Width (in.)	Height (in.)	Weight (lbs.)	Cyl. (no.)	Displ. (cu. cent.)	Carb. (bls.)	Bore & Stroke (in.)	Comp. Ratio
2 Dr. Sedan	4-Spd.	96.7	164.0	59.3	54.5	1985	4	1,361	2	3.35x2.36	8.5:1
DL 2 Door Sedan	4-Spd.	96.7	164.0	59.3	54.5	1985	4	1,361	2	3.35x2.36	8.5:1
DL 2 Door Sedan	Auto.	96.7	164.0	59.3	54.5	2040	4	1,595	2	3.62x2.36	8.5:1
DL 4 Door Sedan	4-Spd.	96.7	164.0	59.3	54.5	2030	4	1,361	2	3.35x2.36	8.5:1
DL 4 Door Sedan	Auto.	96.7	164.0	59.3	54.5	2085	4	1,595	2	3.62x2.36	8.5:1
DL Station Wagon	4-Spd.	96.7	164.8	59.3	55.9	2145	4	1,361	2	3.35x2.36	8.5:1
DL Station Wagon	Auto.	96.7	164.8	59.3	55.9	2200	4	1,595	2	3.62x2.36	8.5:1
4 WD Sta. Wagon	4-Spd.	96.1	158.7	59.1	57.5	2190	4	1,361	2	3.35x2.36	8.5:1
DL Coupe	5-Spd.	96.7	164.0	59.3	53.0	2005	4	1,361	2	3.35x2.36	8.5:1
GF Hardtop	Auto.	96.7	164.0	59.3	53.1	2105	4	1,595	2	3.62x2.36	8.5:1
GF Hardtop	5-Spd.	96.7	164.0	59.3	53.1	2060	4	1,361	2	3.35x2.36	8.5:1

Note: all models are equipped with rack and pinion steering and power assist front disc brakes. Specifications are subject to change without notice.

## 1976 SUBARU MODEL YEAR—COLOR SELECTION BY VEHICLE TYPE

REGAL MAROON



GF Hardtop only

BRILLIANT RED



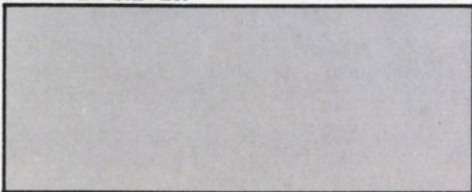
All models

VITAL ORANGE



All models except: 2 door sedan & 4 wheel drive wagon

TWINKLE SILVER



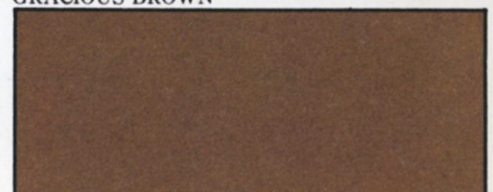
DL Coupe

VISTA BLUE



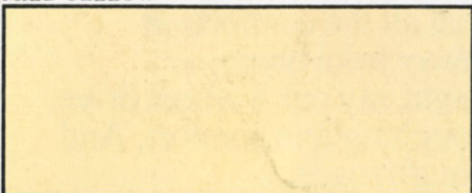
All models except: 2 door sedan & 4 wheel drive wagon

GRACIOUS BROWN



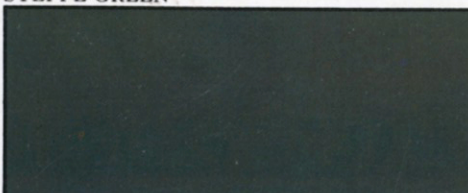
All models except: 2 door sedan & 4 wheel drive wagon

MILD YELLOW



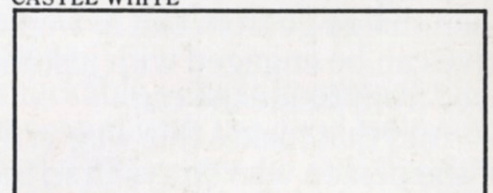
All models except: 2 door sedan

STEPPE GREEN



4 wheel drive only

CASTLE WHITE



All models