

1985

# Ford LTD Crown Victoria





Donald E. Petersen  
President

Ford Motor Company  
The American Road  
Dearborn, Michigan 48121

Dear New Car Buyer:

Quality is Job 1 at Ford Motor Company. This isn't just a phrase. It's a commitment to total quality.

Total quality begins with the design and engineering of our cars and continues through the life of the product. We plan them with a vision of the customer — of you — sitting behind the wheel of a new car.

Total quality will be apparent to you through functional performance, overall vehicle integrity, the "look and feel" of materials, satisfying aesthetics, safety, serviceability and cost of ownership.

Total quality requires continuous improvement in everything we do. Every employee at Ford Motor Company is involved in the process of meeting your needs and expectations.

I think the 1985 LTD Crown Victoria is an excellent example of the quality I'm talking about. It has full 6-passenger roominess and luxury, smooth V-8 power with electronic fuel injection and gas-saving Automatic Overdrive transmission. Crown Victoria and Country Squire Wagons have family-sized comfort with seating for up to eight.

I invite you to look over our new 1985 Ford cars in your dealer's showroom. Test drive them on the road. When you do, I think you'll understand all that's involved in the total quality concept at Ford Motor Company.

A handwritten signature in black ink that reads "Donald E. Petersen". The signature is written in a cursive, flowing style.

Donald E. Petersen  
President  
Ford Motor Company

# Ford LTD Crown Victoria for 1985

In this world of smaller cars, it's a pleasure to enjoy the comfort, quietness and smooth ride of the LTD Crown Victoria from Ford.

Electronically fuel-injected V-8 power, full frame construction, spacious 6-passenger seating — these and many more are standard in LTD Crown Victoria.

LTD Crown Victoria Sedan and Wagon and the classic Country Squire. Designed and engineered in the tradition of the world's finest road cars.

## Contents

Quality and Workmanship. . . . .	4-5
Power and Efficiency . . . . .	6-7
Ford LTD Crown Victoria Environment. . . . .	8-9
Ford LTD Crown Victoria Sedans. . . . .	10-11
Ford LTD Crown Victoria Wagons . . . . .	12-13
Features, Options, Colors and Trims . . . . .	14-15
Safety Features. . . . .	16
Owner Information. . . . .	17

*Front and back covers: LTD Crown Victoria 4-Door Sedan shown with optional Brougham roof treatment, pivoting front vent windows, RH remote-control mirror, illuminated entry system, cast aluminum wheels, 15-in. tires, rocker panel moldings, front cornering lamps, rear window defroster, bumper rub strips.*



**LTD Crown Victoria 2-Door Sedan (left) and 4-Door (below)** provide room for six passengers plus a spacious deep-well trunk. LTD Crown Victoria is one of the very few cars you can buy today that has standard V-8 power.



**LTD Crown Victoria 4-Door Sedan.** Four wide-opening doors, designed for convenient entries and exits, complement the comfort of this roomy and luxurious sedan.



**Country Squire Wagon** has all the comfort and spaciousness of the **LTD Crown Victoria Wagon**, along with the classic look of woodtone bodyside and doorgate paneling.

**A word about this catalog:** Some of the equipment shown or described throughout the catalog is available at extra cost.

# Quality and Workmanship

Ford Motor Company is committed to building cars that meet the high quality standards expected by those who drive them.

Every aspect of the car's design has a purpose, whether it be aerodynamic efficiency or interior comfort.

Engineering systems — the engine and suspension, for example — are

manufactured and assembled under strict quality controls.

The hood, doors, decklid, moldings — everything has stringent fit tolerances. The paint finish is smooth and lustrous.

Behind the quality of every Ford car are the dedicated people who produce it.

**Design and engineering, where quality begins.**

Quality demands that before a car can be built right, it must first be designed and engineered right.



Today, engineers can measure with amazing accuracy how a car responds to actual on-road conditions long before it is built. It's done with simulations of full-scale vehicles and individual components in action on computer screens.

Vehicles can be driven around pylons at various speeds, climb steep grades, run over potholes, just as they would be in real testing at a proving ground. The computer displays in close detail the intricate movements of the suspension and other systems. They're evaluated to high standards of performance, redesigned and retested if necessary.

Even with this advanced technology, however, the art of automotive design and engineering remains in the hands of designers and engineers. The computer is there to assist them.

### **Withstanding stress. The ultimate test of a car's quality.**

Drivers expect their cars to function properly in everyday use. So Ford cars are road-tested over hundreds of thousands of miles, are subjected to extreme stress and load conditions over paved and unpaved surfaces, up and down steep grades, through corrosive salt baths. They run the full course of demanding acceleration, cornering and braking maneuvers.

But even before these road tests, Ford engineers put prototype cars through numerous laboratory tests. The Electrodynamic Actuator, for example, drives a car continuously under a variety of road and weather conditions. One objective is to eliminate squeaks and rattles caused by bumps and jolts and the effects of hot and cold temperatures.



*Left: LTD Crown Victoria 4-Door Sedan shown with optional Brougham roof treatment, pivoting front vent windows, RH remote-control mirror, illuminated entry system, cast aluminum wheels, 15-in. tires, rocker panel moldings, front cornering lamps, rear window defroster, bumper rub strips.*



### **Computers, robots and lasers in manufacturing and assembly.**

Monitoring engine performance, checking electrical systems for accuracy, helping ensure smooth paint applications for finish quality — these are some of the vital roles that computers play in the assembly of Ford cars.

Ford places great importance also on robotics to achieve high quality in fit, finish and function. Robots are programmed to provide consistency and control to an extraordinary degree. They can do the 2,000 welds on a car's body quickly, completely, with the precision the blueprints demand.



The laser, another advanced-technology tool, helps improve quality by providing accurate measurement of everything from engine castings and door margins to nuts and bolts and fasteners.

### **Special quality steps: Corrosion protection.**

Ford takes tough measures to protect its cars against the damaging effects of corrosion. Galvanized steel is used for important underbody and structural parts. Pre-coated steel, featuring corrosion inhibitors, is also used in major body panels. Special treatments are applied to selected areas of the body structure.

### **Ingenuity and teamwork. The essential ingredients of high quality.**

At Ford, striving for high quality is a team effort. This is nowhere more evident than in the hundreds of recommendations for quality improvements submitted every year by more than 1,100 Employee Involvement (EI) groups in 65 Ford plants across America.

In addition to the EI groups, there are "durability-reliability" teams specially trained to carry out extensive quality control programs before production begins, and "quality" teams whose primary responsibility is quality improvement after production gets under way.



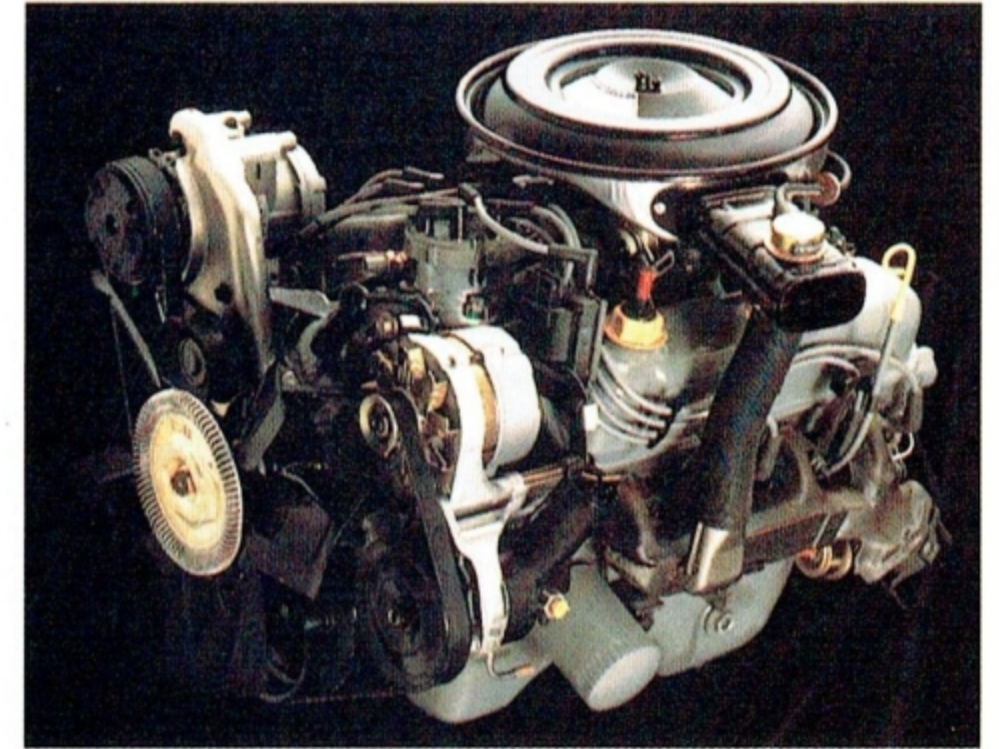
With all the technology and resources at work producing quality products, the people at Ford realize that quality is a never-ending preoccupation. This attitude is essential to Ford's total commitment to quality.

# Power and Efficiency

## Electronically fuel-injected 5.0 liter V-8 power with AOD

LTD Crown Victoria offers a standard V-8 powerteam — an electronic fuel-injected (EFI) 5.0 liter engine, teamed with a gas-saving Automatic Overdrive transmission.

The combination of V-8 performance and body-on-frame construction provides a trailer towing weight capability of up to 5,000 pounds with the optional heavy-duty



trailer towing package — an added benefit of owning a full-size LTD Crown Victoria or Country Squire.

LTD Crown Victoria's electronic fuel injection system (EFI) has a number of important advantages over a conventional carburetor. The principal one is a more efficient use of fuel, accomplished by the precise high-pressure injection of fuel directly into the induction system. This has the added benefit of reducing evaporative loss. EFI means improved overall operation, smooth running and easier starting in temperature extremes.

#### Automatic Overdrive

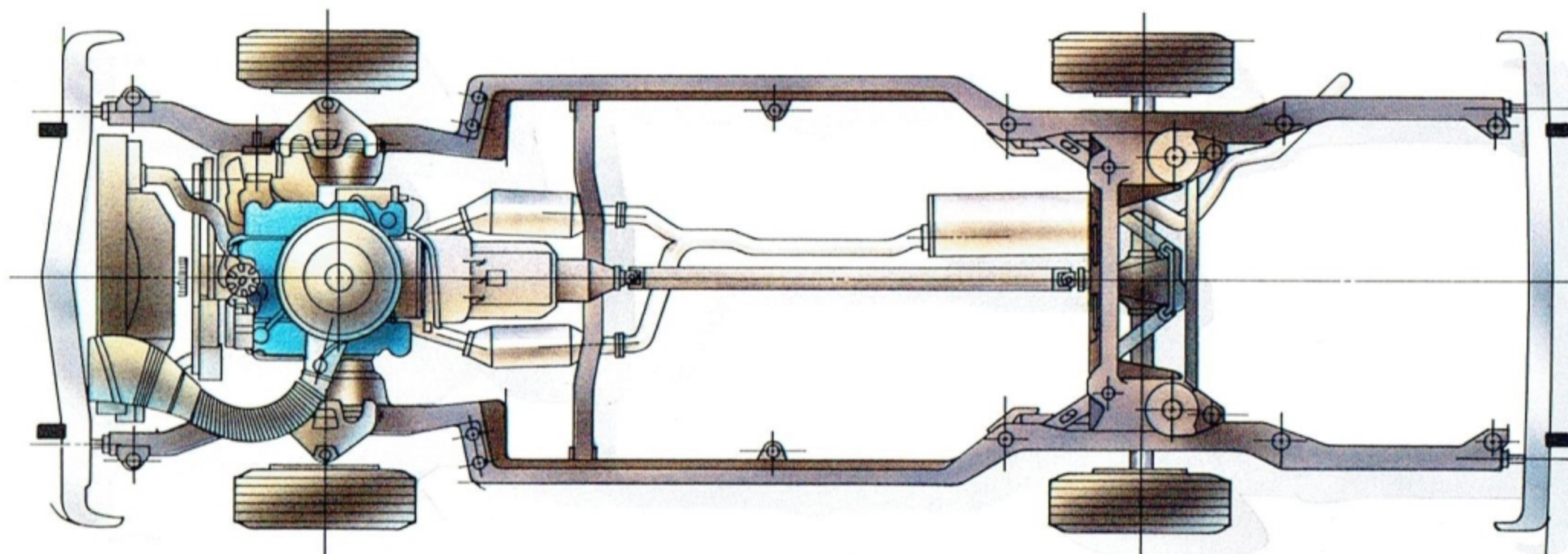
The Automatic Overdrive transmission (AOD), a Ford innovation, also plays a key role in LTD Crown Victoria's efficiency. This transmission automatically shifts into an overdrive fourth gear when the vehicle exceeds 45 mph and the driver eases up on the accelerator pedal. In overdrive fourth, engine speed is reduced by about one-third. The result is improved highway fuel economy and reduced engine wear.

#### EEC-IV: one of the world's most advanced automotive computers

The 5.0 liter EFI engine benefits from a computer called EEC-IV, a fourth generation, state-of-the-art, microprocessor-based engine control system capable of thousands of operations per second. EEC-IV adjusts the air/fuel mixture and ignition timing for quick cold starts. On the road, it constantly senses what the car is being asked to do, then balances the air/fuel mixture and timing for optimum power, response and efficiency.



Left: LTD Crown Victoria 4-Door Sedan shown with optional Brougham roof treatment, pivoting front vent windows, RH remote-control mirror, illuminated entry system, cast aluminum wheels, 15-in. tires, rocker panel moldings, front cornering lamps, rear window defroster, bumper rub strips.



Standard V-8 power, body-on-frame construction, and full coil spring suspension deliver excellent performance and riding comfort.

#### Solid body-on-frame construction

With the aid of computers, efficient materials have been fashioned into a frame of high structural strength. Sixteen large rubber bushings eliminate frame-to-body contact to reduce road noise and vibration.

#### Full coil spring suspension with new gas-filled shocks

LTD Crown Victoria's coil springs and shock absorbers are computer-selected, which means that suspension components closely match ride and load requirements.

LTD Crown Victoria now features gas-filled shock absorbers, which contain a low-pressure charge of nitrogen to suppress foaming of the hydraulic fluid due to rapid bumps or similar agitation. This provides a ride that is smooth in normal driving, yet firm enough for rough road conditions.

An automatic load-leveling suspension is included in LTD Crown Victoria's list of options for 1985. It helps maintain a level vehicle attitude when the car is carrying its maximum load. Vacationers especially will appreciate this feature. For scheduled availability, see your Ford Dealer.

#### LTD Crown Victoria powerteam

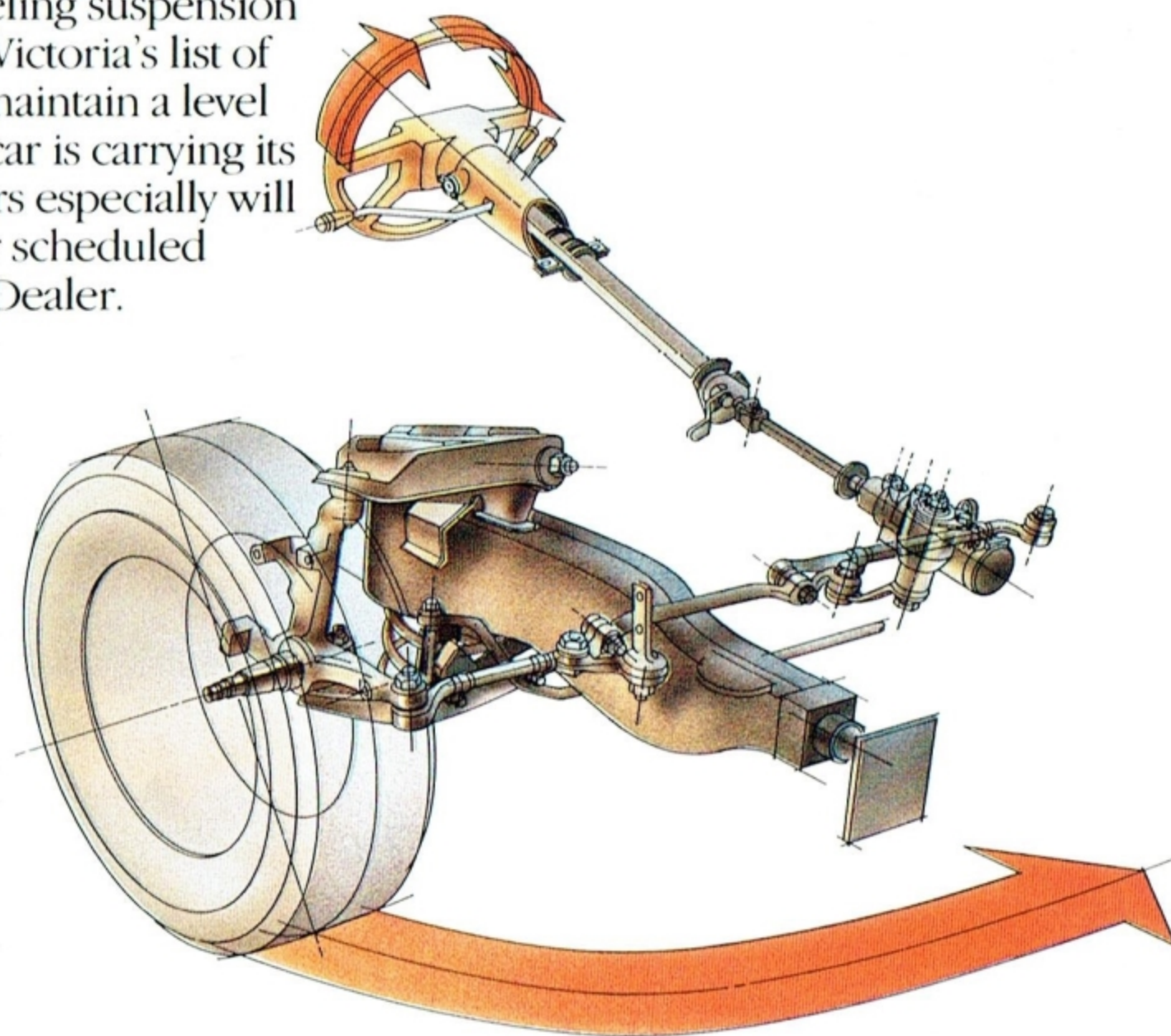
Engine	Transmission	Final Drive Ratios	
		Standard	Traction-Lok
5.0 liter EFI V-8	Automatic Overdrive	3:08*	3:55

\*3:55 with optional High Altitude Emissions System or heavy-duty trailer towing package.

#### Gas mileage

1985 EPA mileage estimates were not available at the time this catalog was approved for printing. As soon as EPA figures are released, your Ford Dealer will be among the first to receive this information and will be happy to pass it along to you.

*LTD Crown Victoria features standard power steering, power front disc/rear drum brakes, and P-metric 14-in. steel-belted radial ply tires.*



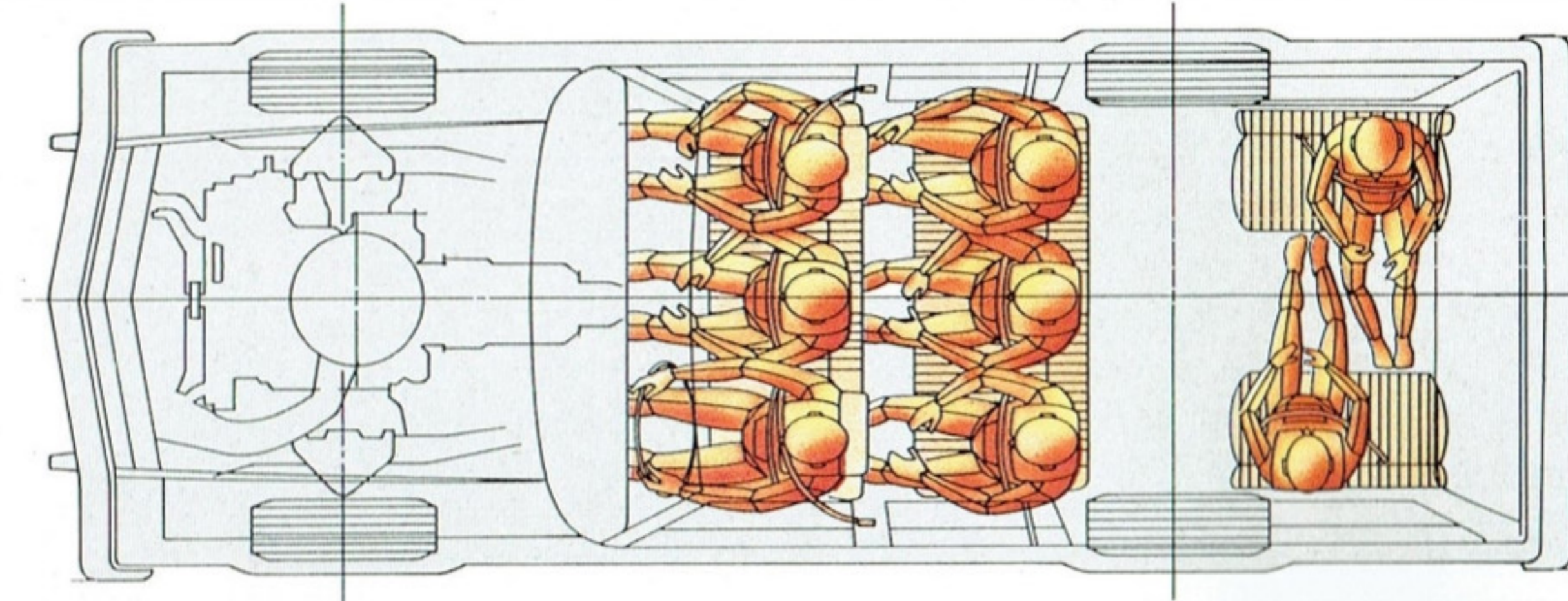
# LTD Crown Victoria Environment

## The full-size luxury dimension

Inside an LTD Crown Victoria there's room for six passengers and then some. Space for luggage is also exceptional. LTD Crown Victoria Sedan has a 22.4-cu. ft. carpeted deep-well trunk. No other sedan provides more. LTD Crown Victoria Wagon has an 89.5-cu. ft. cargo volume

index with the rear seat folded down, and features the 3-way doorgate. It opens like a door with its power window up or down, or lowers like a conventional tailgate. The wagon also has a 9.9-cu. ft. lockable storage compartment beneath the load floor, plus an additional 2 cu. ft. in a lockable side storage compartment.\*

\*See Measurements (page 17) for volume differences with dual facing rear seats. Side compartment not usable with optional load-leveling suspension.



LTD Crown Victoria provides 6-passenger seating. Wagon models can accommodate eight passengers with optional dual facing rear seats (illustrated).

## "Super Luxury" insulation

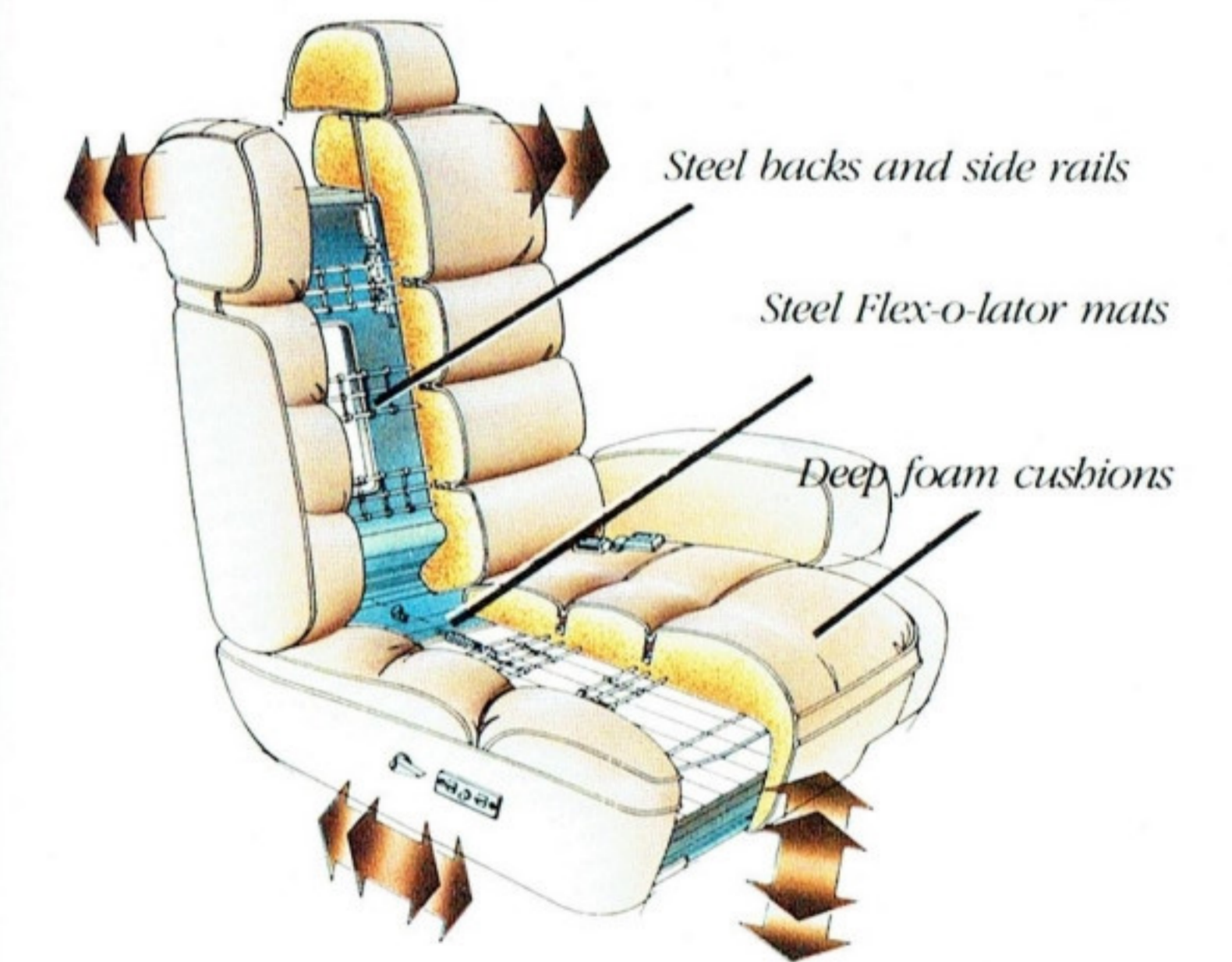
LTD Crown Victoria's Super Luxury acoustical insulation creates the quiet riding environment for which the full-size Ford is famous.

## Designed for maximum comfort

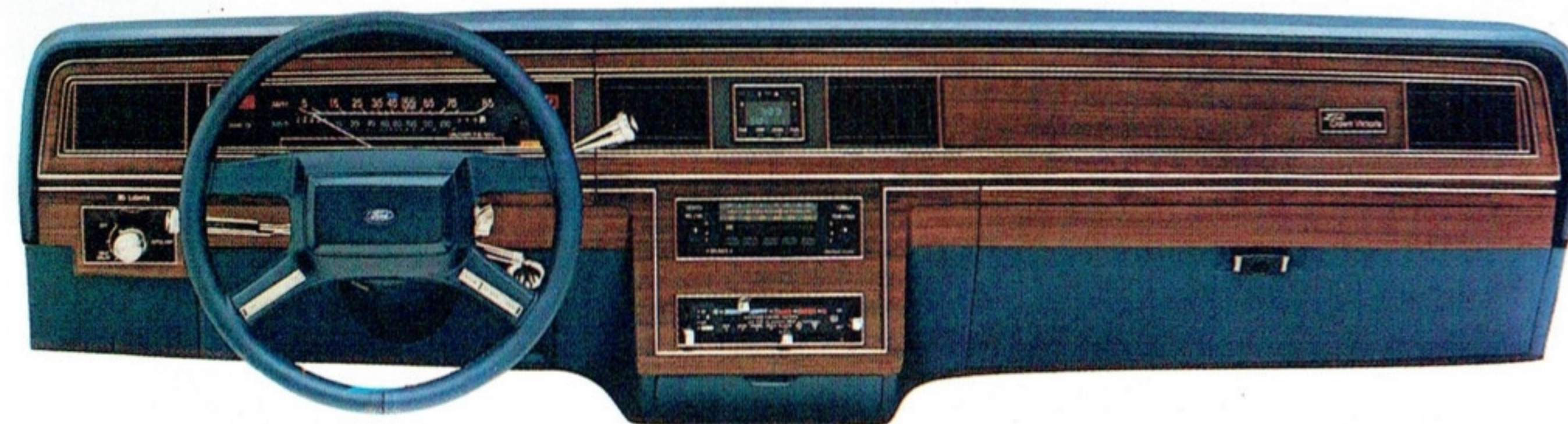
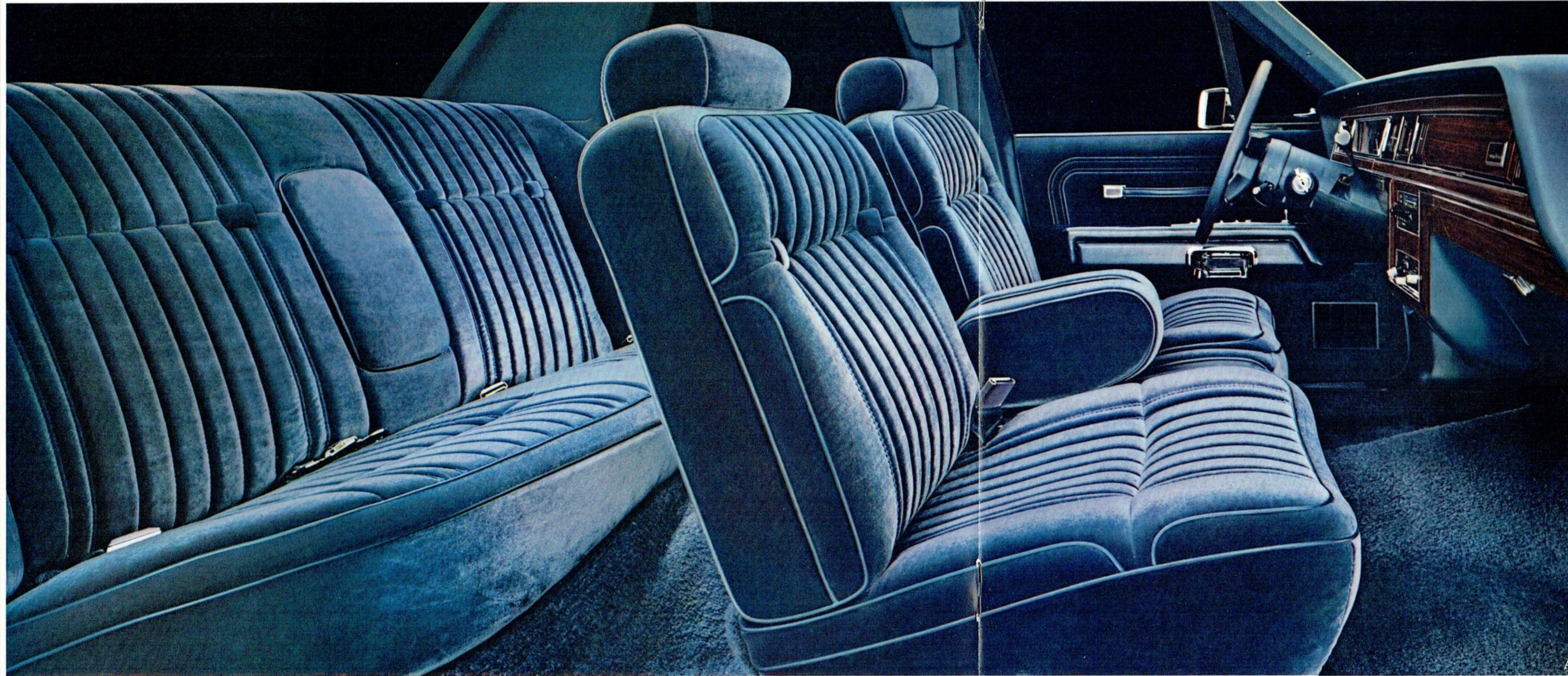
In the LTD Crown Victoria, the doors, seats and roof are designed to provide maximum head, shoulder, hip and leg room. The low hood, cowl and belt lines, narrow roof pillars and large glass areas create a wide field of vision. So does the driver command seating position, one of a number of ergonomic features for driver convenience.

Seats have been carefully designed for comfort and firm support. The front seats have steel backs and side rails supporting molded foam cushions. Steel Flex-o-lator mats provide a large surface for cushion support.

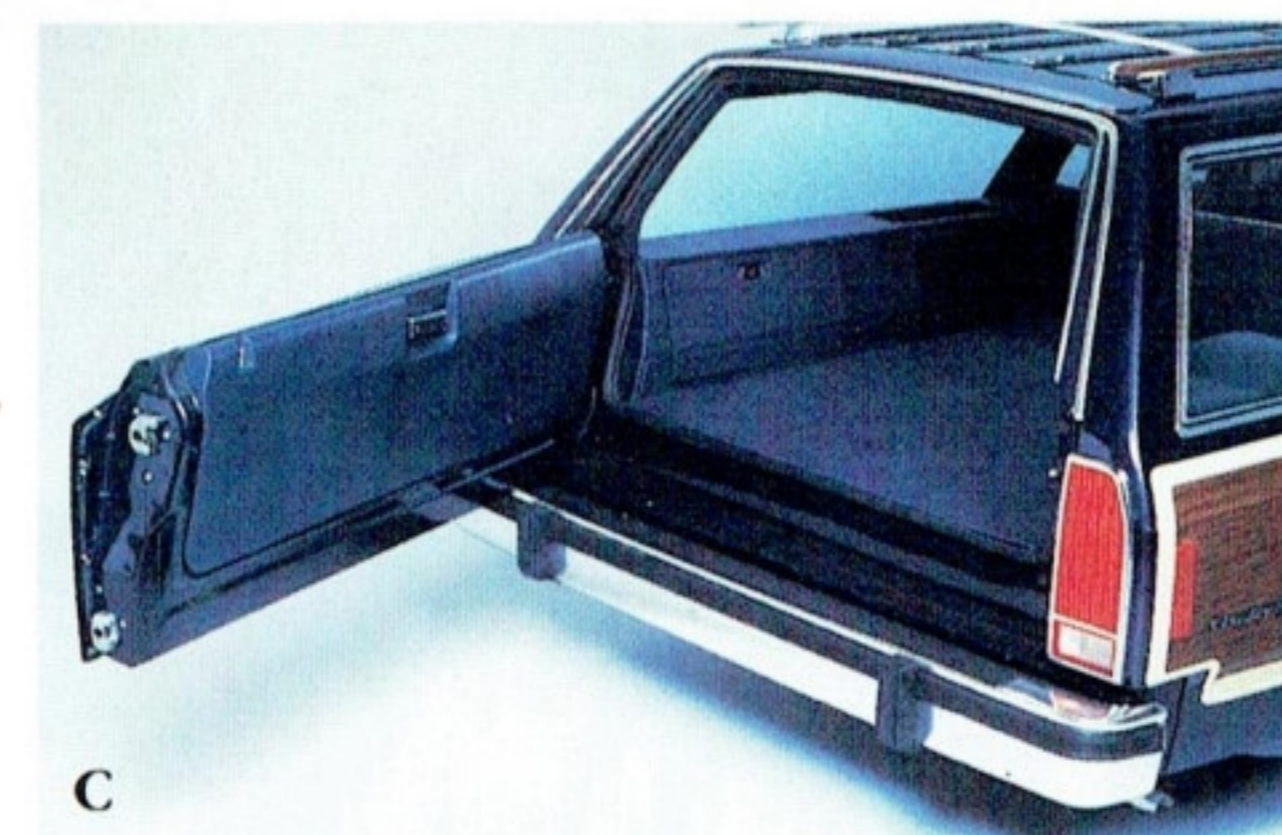
The LTD Crown Victoria features a flight bench front seat with dual recliners and center fold-down armrest. Reclining split bench seats are optional.



Six-way power seat adjustment is available with standard flight bench or optional split bench seats (split bench seat illustrated). Adjust the seat forward/back, up/down, or tilt forward/back.



B



C



C

(A) LTD Crown Victoria 4-Door Sedan with Interior Luxury Group (see page 14 for contents). Other equipment shown may be optional.

(B) Interior Luxury Group instrument panel. Other equipment shown may be optional.

(C) 3-way doorgate opens like a door or lowers like a conventional tailgate.



# Ford LTD Crown Victoria Sedans

LTD Crown Victoria is designed and engineered to offer a level of driving pleasure few other cars can match.

LTD Crown Victoria provides true 6-passenger roominess and quiet riding comfort. V-8 power is standard. The computer-selected suspension system is

engineered with large coil springs and new gas-filled shock absorbers for an exceptionally smooth ride. Acoustical insulation is called Super Luxury and rightly so.

The luxuriously appointed LTD Crown Victoria has a full-width flight bench seat with cloth seating surfaces and dual recliners (optional split bench seats shown at right). AM/FM stereo



with four speakers is standard (may be deleted for credit). Carpeting is thick cut-pile.

Standard also are a left-hand remote-control mirror, quartz electric clock, and courtesy lights in the ashtray, glove box and in the spacious deep-well trunk. These features and many more are all part of LTD Crown Victoria's environment of luxury and comfort.



*Left: LTD Crown Victoria 4-Door Sedan shown with optional pivoting front vent windows, tinted glass, RH remote-control mirror, illuminated entry system, locking wire-style wheel covers, 15-in. tires, rocker panel moldings, front cornering lamps, bumper rub strips.*

# Ford LTD Crown Victoria Wagon and Country Squire

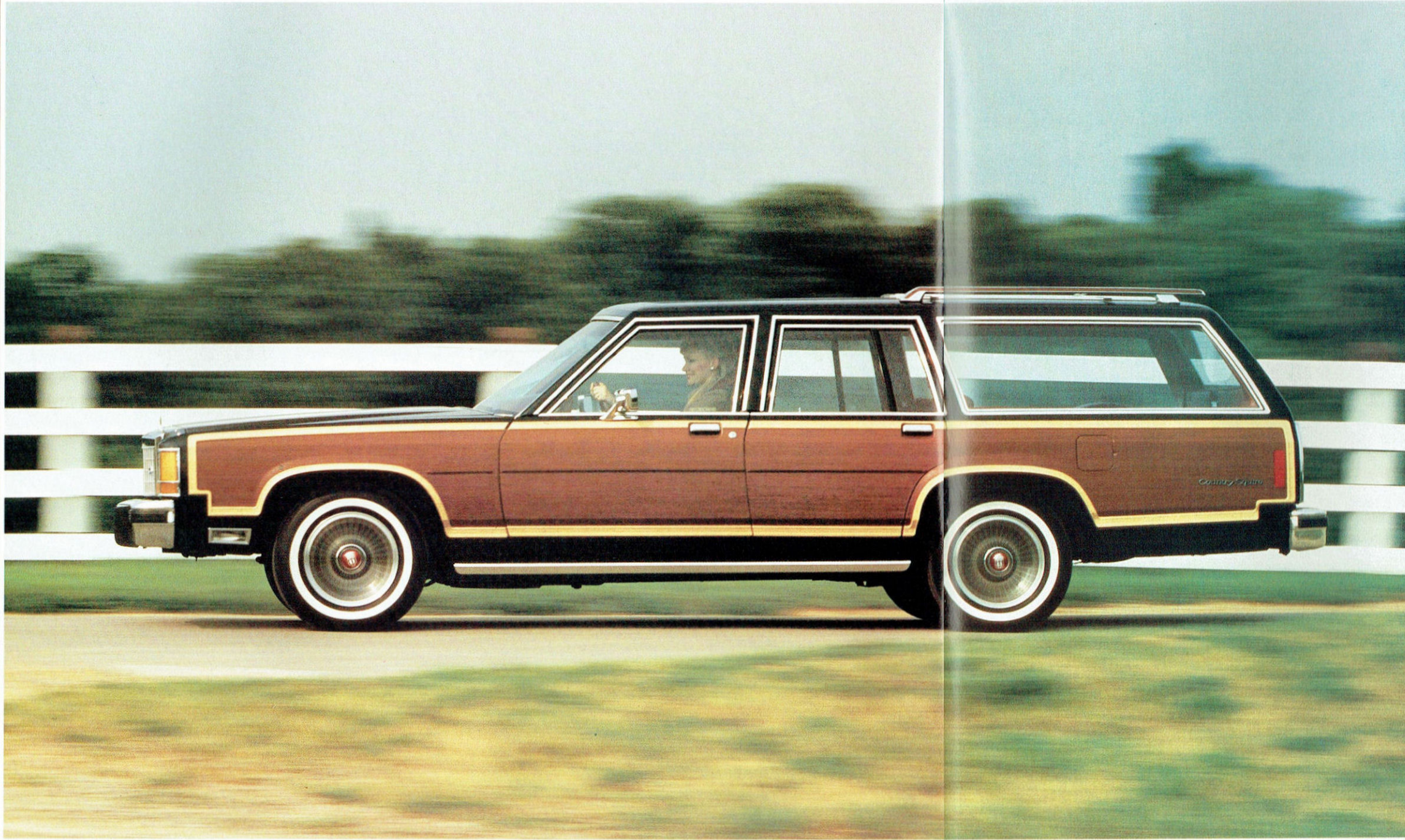
There are two full-size wagon models from Ford — the standard LTD Crown Victoria and the classic Country Squire with handsome woodtone exterior paneling.

Like the sedan model, LTD Crown Victoria Wagons are powered by a 5.0 liter electronically fuel-injected V-8

engine. Super Luxury sound insulation surrounds the passenger compartment. And LTD Crown Victoria has the convenience of the 3-Way Doorgate plus exclusive wagon options. Dual facing rear seats for 8-passenger seating. The added utility of the deluxe luggage rack. And DuraWeave upholstery (shown at right) which looks, feels and breathes like cloth, yet cleans and wears like vinyl.



Ford is "America's Wagonmaster" — and the LTD Crown Victoria and Country Squire are the pride of the Wagonmaster tradition of innovation, spaciousness and comfort.



*Left: LTD Country Squire Wagon shown with optional pivoting front vent windows, bodyside moldings, front cornering lamps, rocker panel moldings, deluxe luggage rack, RH remote-control mirror, rear window defroster, cast aluminum wheels, 15-in. tires, bumper rub strips.*

# Ford LTD Crown Victoria Features and Options

## Rapid-Spec Packages — the best way to buy LTD Crown Victoria options.

When you select your new LTD Crown Victoria, be sure to ask your Ford Dealer about Rapid-Spec Packages. They benefit you in these two important ways: (1) they simplify the ordering procedure, and (2) they can save you money. Many packages include Value Option Discounts. These can represent savings over the manufacturer's suggested retail price totals of the same options if purchased separately. Your dealer has complete details.

### Electronic AM/FM stereo search radio/cassette player

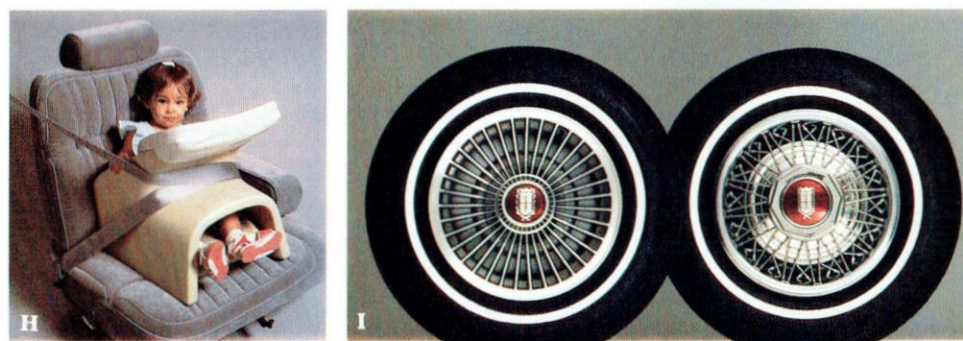
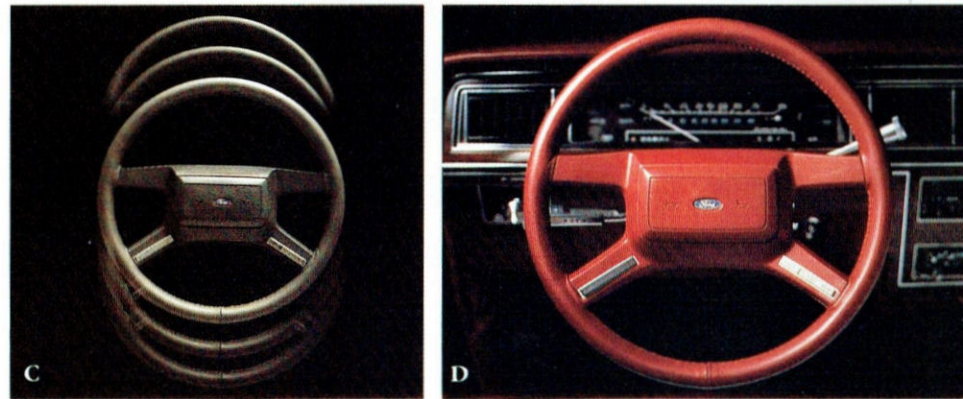
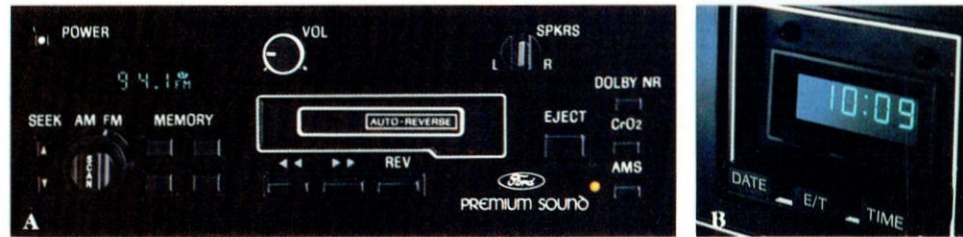
Some of the features of this state-of-the-art quality sound system are: Dolby® Noise Reduction; seek tuning that selects the next listenable station either up or down scale; scan tuning that auditions stations for up to 8 seconds; and "program search" that locates the beginning of the next or previous selection on the cassette tape.

**Illustrated Options:** (A) Electronic AM/FM stereo search radio. (B) Electronic digital clock. (C) Tilt steering wheel. (D) Leather-wrapped steering wheel with speed control. (E) 6-way power seat adjustment. (F) Pivoting front vent windows. (G) Tot-Guard (available at Ford Dealers). (H) Cast aluminum wheels; locking wire-style wheel covers.

**Interior Luxury Group** (shown on pages 8-9) features: reclining split bench seats with seat back map pockets; crushed velour or SuperSoft vinyl upholstery (optional leather with special sew style available); luxury door panels with assist straps, full-length armrest and power side window controls; 18-ounce cut-pile floor carpeting; additional woodtone appliques on instrument panel; carpeted package tray and luxury luggage compartment trim (sedan); electronic digital clock; trip odometer; low oil level and low fuel warning lights; rear seat center armrest (sedan); dual illuminated visor mirrors; automatic parking brake release; plus Light Group features listed on page 15.

### A word about Ford options

Some of the equipment shown or described throughout the catalog is available at extra cost.



## LTD CROWN VICTORIA FEATURES

ENGINEERING	Sedans	Wagon	Country Squire
5.0 liter (302 CID) EFI V-8	S	S	S
EEC-IV Electronic Engine Controls	S	S	S
Automatic Overdrive transmission	S	S	S
Electronic voltage regulator	S	S	S
DuraSpark electronic ignition	S	S	S
Power steering	S	S	S
Power front disc/rear drum brakes	S	S	S
Full coil spring suspension system with gas-pressurized shock absorbers	S	S	S
Maintenance-free battery	S	S	S
P215/75R x 14" WSW steel-belted radial tires	S	S	S
Concealed windshield wipers with fluidic washer system	S	S	S
Power ventilation system	S	S	S
Tiltaway door hinges	S	S	S
Mini spare tire	S	NA	NA
Conventional spare tire	0	S	S
Super Luxury sound insulation	S	S	S
<b>EXTERIOR</b>			
Quad rectangular halogen headlamps	S	S	S
Bumper guards, front and rear	S	S	S
LH remote-control mirror	S	S	S
Vinyl insert bodyside moldings	S*	S	0
Bright wheelip moldings	S	S	NA
Rocker panel moldings	0	S	0
Hood accent stripes	S	S	S
Bodyside accent stripes	S	S	NA
Decklid accent stripes	S	NA	NA
Wide bright lower door moldings	S	NA	NA
Padded rear half vinyl roof with brushed aluminum wrapover molding (except with optional Brougham Roof Treatment)	S	NA	NA
3-Way Doorgate with power window	NA	S	S
Woodtone bodyside and doorgate paneling	NA	NA	S
Deluxe wheel covers	S	S	S
<b>INTERIOR</b>			
Flight bench front seat with dual recliners and fold-down center armrest	S	S	S
Cloth seating surfaces	S	0**	0**
All-vinyl upholstery	0	S	S
Deluxe door trim with carpeted lower section	S	S	S
Automatic inertia seat back releases (2-door)	S	NA	NA
Color-keyed deluxe belts with comfort regulator feature	S	S	S
Seat belt reminder chime	S	S	S
16-ounce cut-pile carpeting	S	S	S
AM/FM stereo radio with four speakers (may be deleted for credit)	S	S	S
Quartz electric clock	S	S	S
4-spoke luxury steering wheel with center hub-mounted horn	S	S	S
Steering column-mounted controls for turn signals, headlamp high-beams, flash-to-pass feature, windshield wipers/washers	S	S	S
Courtesy lights in glove box, front ashtray, trunk (sedan), cargo area (wagon)	S	S	S
Rear door courtesy light switches (4-door)	S	S	S
Day/night rearview mirror	S	S	S
Deep-well trunk with carpeting	S	NA	NA
Fold-down rear seat	NA	S	S
Removable color-keyed load floor carpet	NA	S	S
Lockable storage compartments under load floor and in left rear side panel†	NA	S	S

\*When optional Two-Tone paint with tape stripes is ordered, standard moldings are deleted and made optional.  
\*\*Available as part of the Interior Luxury Group.  
†Rear side compartment not usable with optional automatic load leveling suspension.

## LTD CROWN VICTORIA OPTIONS

ENTERTAINMENT SYSTEMS	Sedans	Wagon	Country Squire
AM/FM stereo radio with cassette tape player (includes Dolby® Noise Reduction and auto-reverse)	0	0	0
Electronic AM/FM stereo search radio with cassette tape player (includes Dolby® Noise Reduction, auto-reverse and program search features)	0	0	0
Premium sound system. Six speakers and power amplifier.	0	0	0
Power radio antenna	0	0	0
Note: All stereo systems include dual front and rear speakers.			
<b>APPEARANCE</b>			
Brougham roof treatment (4-door)	0	NA	NA
Two-Tone paint with tape stripes	0	NA	NA
Luxury luggage compartment trim	0	NA	NA
Leather-wrapped steering wheel	0	0	0
<b>COMFORT AND CONVENIENCE</b>			
Split bench seats	0	0	0
Interior Luxury Group. See page 14.	0	0	0
DuraWeave vinyl seating surfaces	NA	0	0
Air conditioning. Manual or automatic control.	0	0	0
Tinted glass	0	0	0
Dual facing rear seats	NA	0	0
Convenience Group: Interval windshield wipers, RH visor mirror, Remote-control decklid release (sedan), Power doorgate lock (wagon), Trip odometer, Low oil level warning light, Low fuel warning light.	0	0	0
Pivoting front vent windows	0	0	0
Electronic digital clock	0	0	0
Rear window defroster	0	0	0
Autolamp system. Automatically turns headlamps on at night, off in daylight.	0	0	0
Tripminder® computer	0	0	0
Cornering lamps	0	0	0
Illuminated entry system	0	0	0
Light Group: Dual beam map light, Headlamps-on warning chime, Engine compartment light, Dual instrument panel courtesy lamps.	0	0	0
Speed control	0	0	0
Tilt steering wheel	0	0	0
RH remote-control convex mirror	0	0	0
Interval windshield wipers	0	0	0
Dual illuminated visor mirrors	0	0	0
Deluxe luggage rack. Air deflector available through Ford Dealers.	NA	0	0
Engine block immersion heater	0	0	0
Automatic parking brake release	0	0	0
<b>PERFORMANCE</b>			
Heavy-duty trailer towing package	0	0	0
Automatic load leveling suspension	0	0	0
Traction-Lok rear axle	0	0	0
Heavy-duty suspension	0	0	0
Handling suspension	0	NA	NA
Heavy-duty battery	0	0	0
California emissions system	0	0	0
High altitude emissions system	0	0	0
<b>POWER ASSISTS</b>			
6-way power seat adjustment. For driver only or driver and passenger.	0	0	0
Power Lock Group: Door locks, Decklid release (sedan), Doorgate lock (wagon).	0	0	0
Power side windows (lock-out switch in 4-dr./wagon)	0	0	0
<b>PROTECTION</b>			
Remote locking fuel door	0	0	0
Vinyl insert bodyside moldings. Optional on sedans with Two-Tone paint.	S	S	0
Rocker panel moldings	0	S	0
Bumper rub strips	0	0	0
Carpeted floor mats, front and rear	0	0	0
<b>TIRES</b>			
P205/75R 15" WSW	0	0	0
All-season P215/70R 15" WSW, conventional or puncture-sealant	0	0	0
Conventional spare tire	0	S	S
<b>WHEELS/WHEEL COVERS</b>			
Locking wire-style wheel covers (4)	0	0	0
Cast aluminum wheels (4)	0	0	0

## COLORS AND TRIMS

Interior Trim Colors					Exterior Paint Colors
Oxford Grey	Canyon Red	Midnight Blue	Clove Brown	Sand Beige	
•	•	•	•	•	Black
•	•	•	•	•	Oxford White
•	•	•	•	•	Med. Charcoal Met.
•	•	•	•	•	Silver Met.
•	•	•	•	•	Med. Canyon Red Met.
•	•	•	•	•	Midnight Canyon Red Met.
•	•	•	•	•	Midnight Blue Met.
•	•	•	•	•	Pastel Regatta Blue
•	•	•	•	•	Light Regatta Blue Met.
•	•	•	•	•	Dark Clove Brown Met.
•	•	•	•	•	Sand Beige
•	•	•	•	•	Med. Sand Beige
•	•	•	•	•	<b>Two-Tone Colors</b>
•	•	•	•	•	Med. Canyon Red Met./Midnight Canyon Red Met.
•	•	•	•	•	Midnight Blue Met./Light Regatta Blue Met.
•	•	•	•	•	Black/Med. Charcoal Met.
•	•	•	•	•	Sand Beige/Med. Sand Beige
•	•	•	•	•	Silver Met./Med. Charcoal Met.

Some of the paint and trim colors are shown in this catalog. On the printed page, of course, colors are at best only representative of the originals. Your Ford Dealer can show you actual samples of the paint colors and trim materials presented above as well as Two-Tone paint combinations. Ask him also about paint and trim color availability with the following vinyl roof colors. **Vinyl Roof Colors:** Black, Oxford White, Canyon Red, Medium Sand Beige, Sand Beige, Midnight Blue, Light Grey.



# Ford LTD Crown Victoria Features and Options

## Rapid-Spec Packages — the best way to buy LTD Crown Victoria options.

When you select your new LTD Crown Victoria, be sure to ask your Ford Dealer about Rapid-Spec Packages. They benefit you in these two important ways: (1) they simplify the ordering procedure, and (2) they can save you money. Many packages include Value Option Discounts. These can represent savings over the manufacturer's suggested retail price totals of the same options if purchased separately. Your dealer has complete details.

### Electronic AM/FM stereo search radio/cassette player

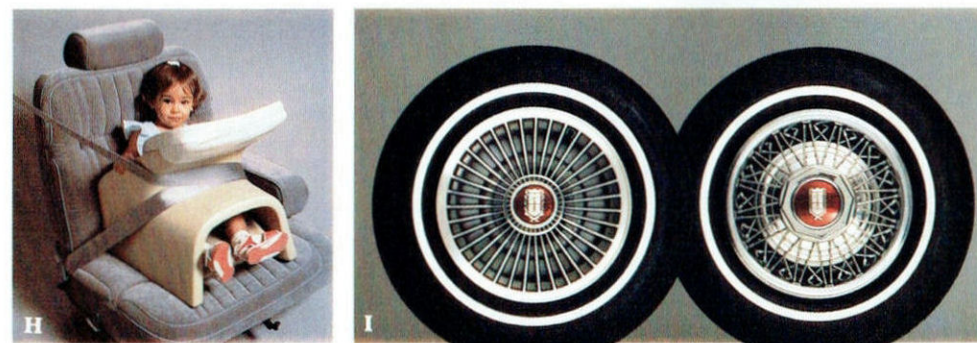
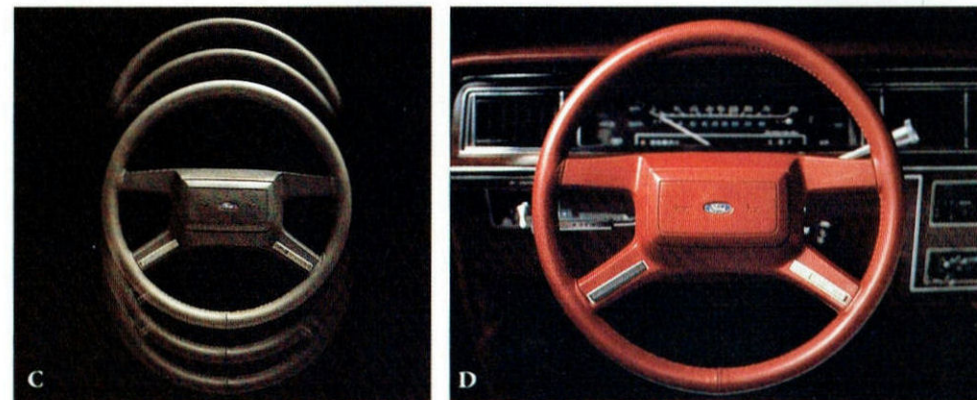
Some of the features of this state-of-the-art quality sound system are: Dolby® Noise Reduction; seek tuning that selects the next listenable station either up or down scale; scan tuning that auditions stations for up to 8 seconds; and "program search" that locates the beginning of the next or previous selection on the cassette tape.

**Illustrated Options:** (A) Electronic AM/FM stereo search radio. (B) Electronic digital clock. (C) Tilt steering wheel. (D) Leather-wrapped steering wheel with speed control. (E) 6-way power seat adjustment. (F) Pivoting front vent windows. (G) Power side windows and power lock group. (H) Tot-Guard (available at Ford Dealers). (I) Cast aluminum wheels; locking wire-style wheel covers.

**Interior Luxury Group** (shown on pages 8-9) features: reclining split bench seats with seat back map pockets, crushed velour or SuperSoft vinyl upholstery (optional leather with special sew style available), luxury door panels with assist straps, full-length armrest and power side window controls; 18-ounce cut-pile floor carpeting; additional woodgrain appliques on instrument panel; carpeted package tray and luxury luggage compartment trim (sedan), electronic digital clock; trip odometer; low oil level and low fuel warning lights; rear seat center armrest (sedan); dual illuminated visor mirrors; automatic parking brake release; plus Light Group features listed on page 15.

### A word about Ford options

Some of the equipment shown or described throughout the catalog is available at extra cost.



## Safety Features

### A commitment to safety

Safety, like quality, begins as an attitude, a way of thinking that's fundamental in shaping a vehicle's structure and components from the drawing board to assembly.

### Occupant safety

Ford commits enormous resources every year to the development and testing of all car lines and their occupant protection features.

Body structures are carefully designed from the start with passenger safety as a primary concern. After they are validated for theoretical soundness, structures are assembled into prototype vehicles and subjected to exhaustive crash testing.

### Operating safety

This term applies to a vehicle's ability, with the aid of the driver, to avoid an accident.

Ford cars are engineered to do their part — provide suspension and steering systems designed for control, as well as a brake system designed to provide fast stopping action and fade resistance.

Of course, it's up to the driver to make the best use of the vehicle's accident-avoidance equipment. This involves driving defensively, reacting in time, and such seemingly small things as properly regulating the ventilation system (to help the driver stay alert).

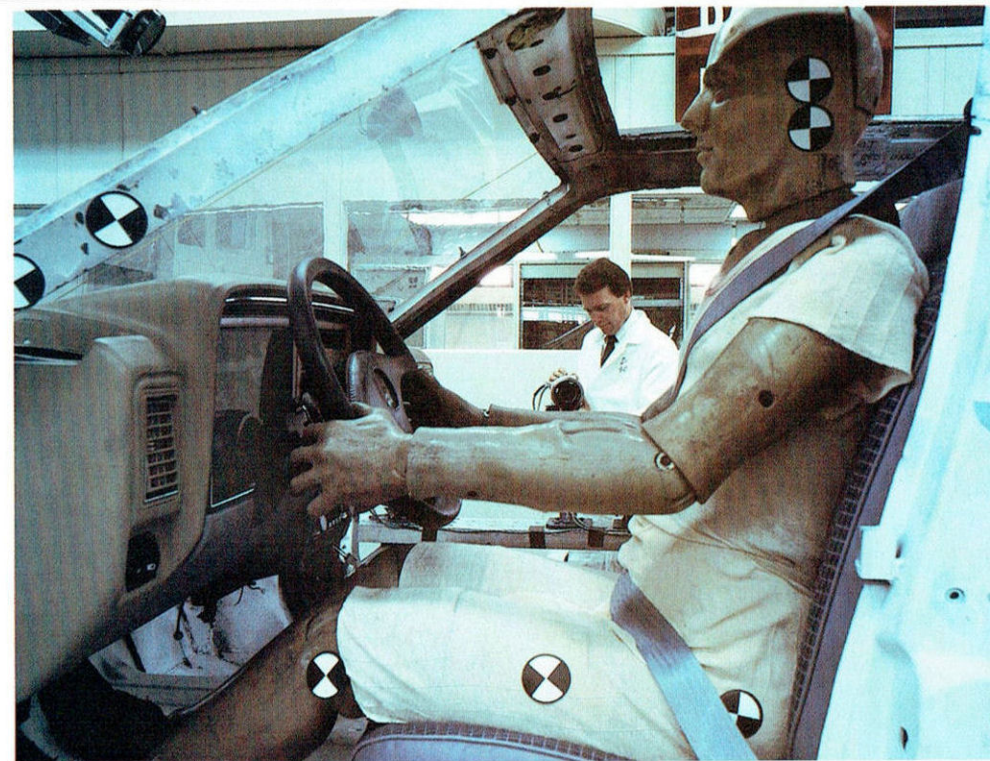
### 5-mile-an-hour bumpers

Bumpers on Ford LTD Crown Victoria are designed to protect lamps, cooling system, exhaust and other body components in the event of a minor impact. While some manufacturers have replaced the 5-mile-an-hour bumper system with a 2½-mile-an-hour system, Ford offers you the protection of 5-mile-an-hour bumpers front and rear.

### Get it together — buckle up.

Ford Motor Company strongly encourages all passengers to use their safety belts. In all Ford cars, outboard front seat lap and shoulder belts have automatic retractors and comfort regulators. Outboard rear seat positions also have lap belts with retractors.

Ford urges the use of child and infant restraints, even in states where they are not required by law. Ford's easy-to-install Tot-Guard (for children 20 to 50 pounds)



and Infant Carrier (for children up to 20 pounds) are available at all Ford Dealers. If a child restraint requires a top-tether, Ford cars provide for attachment of an anchor at each rear outboard seating position.

### Ford LTD Crown Victoria Lifeguard Design Safety Features

#### Vehicle operation

- Safety rim wheels and load-rated tires
- Split service hydraulic brake system with warning light
- Corrosion-resistant brake lines
- Flash-to-pass headlamps
- Turn indicator lever with lane-changing signal feature
- Hazard warning flasher
- Backup lights
- Side marker lights
- Parking lights coupled with headlamps
- Two-speed windshield wipers
- Windshield washers
- Outside rearview mirror, driver's side
- Glare-reduced instrument panel, windshield wiper arms and windshield pillars
- Uniform automatic transmission shift quadrant with safety starting switch
- Continuously variable control illumination intensity (instrument cluster lighting)
- Safety hood latch system
- Function-rated windshield defroster system

#### Occupant protection

- Safety-designed front end structure
- Steel guard rails in side doors
- Double yoke safety door latches and safety hinges
- Integral lap and shoulder belts with automatic retractors for front outboard occupants
- Positive seat belt fastening reminder warning light and chime for the driver's seat
- Lap belts for center front and all rear seating positions with retractors for rear outboard occupants
- Energy-absorbing steering column and steering wheel
- Energy-absorbing armrests and safety-designed door handles
- Energy-absorbing instrument panel with padding for right and center front passengers
- Energy-absorbing sun visors
- Energy-absorbing front seat back tops
- Self-locking front seat back latches on 2-door vehicles
- Head restraints for front outboard occupants
- Safety glove box latch
- Inside yieldaway rearview mirror
- Impact-absorbing laminated safety glass windshield
- Flame-resistant interior materials
- Safety-designed coat hooks
- Safety-designed radio control knobs and push buttons

#### Anti-theft

- Locking steering column with key warning chime reminder (with "Park" interlock for key release)
- Visible vehicle identification number
- Single key with anti-theft design for door entry and ignition

#### Damage resistance

- Impact-resistant front and rear bumper systems

## Owner Information

### Measurements

	2-Dr.	4-Dr.	Wagon
Wheelbase	114.3"	114.3"	114.3"
Length	211.0"	211.0"	215.0"
Height	55.3"	55.3"	56.8"
Width	77.5"	77.5"	79.3"
Front tread	62.2"	62.2"	62.2"
Rear tread	62.0"	62.0"	62.0"
Trunk space or cargo volume index (cu. ft.)	22.4*	22.4*	89.5**
Fuel capacity (gal.)	18.0	18.0	18.5
Curb weight (lb.)	3,699	3,739	3,904
Passenger capacity	6	6	6†

\*With mini spare tire.  
\*\*Plus 9.9 cu. ft. in a lockable storage compartment beneath the load floor (5.7 cu. ft. with dual facing rear seats, 7.7 cu. ft. with cushions removed) and 2.0 cu. ft. in a lockable side storage compartment.  
† Eight with optional dual facing rear seats.



As part of Ford Motor Company's commitment to your total satisfaction, participating Ford Dealers offer the Free Lifetime Service Guarantee. They stand behind their work, in writing, for as long as you own your car. This guarantee covers virtually every repair you pay for after your new vehicle warranty expires. Now when you pay for a covered repair once, you never have to pay for the same repair again. Ever. The dealer who did the work will fix it free. Free parts. Free labor.

While it doesn't cover routine maintenance parts, belts, hoses, sheet metal or upholstery, this limited warranty does cover thousands of parts in normal use.

No other car company's dealers, foreign or domestic, offer this kind of security. Nobody.

See your participating Ford Dealer for details.



Ford Motor Company's optional Extended Service Plan covers major components on new Ford cars and light trucks for longer than the vehicle's basic warranty. The cost is so moderate for the protection you

get that it could pay for itself the first time you need it. Your Ford Dealer will be happy to detail the plan for you. Available on all cars and most light trucks, it is honored by more than 6,100 Ford and Lincoln-Mercury dealers nationwide and in Canada.

### Motorcraft Ford QUALITY REPLACEMENT PARTS FROM FORD

Genuine Ford and Motorcraft original equipment replacement parts are precision engineered and manufactured to Ford specifications to deliver top-level performance in all Ford-built cars and trucks. The Ford and Motorcraft brand names are your best assurance of quality and long-term satisfaction because these replacement parts meet the same high standards as those installed in production, and at Ford, "Quality is Job 1."

### Scheduled maintenance

Ford wants to reduce the frequency and cost of scheduled maintenance on its cars to an absolute minimum. Here are some examples of scheduled maintenance for the new Ford LTD Crown Victoria. For complete maintenance recommendations, refer to the Ford Owner Guide.

Engine oil .....	each 7,500 miles
Spark plug change .....	each 30,000 miles
Air filter replacement .....	each 30,000 miles
Engine coolant replacement .....	each 52,000 miles or 3 years

### The commitment to quality by Ford and its dealers can save you money on repairs, too.

In addition to the Lifetime Service Guarantee, the Extended Service Plan and Ford and Motorcraft original equipment parts already described, Ford and Ford Dealers are working in other ways to save you money on repairs and help ensure your satisfaction.

### Nationwide dealer network ready to assist you

Should your Ford car or truck need repair while you're traveling or away from home, the nearest servicing dealer can be located simply by calling one of the toll-free numbers listed under "Ford-paid repair programs."

### Specialized tools and equipment

The latest in diagnostic and service equipment designed especially for use in the repair of Ford Motor Company products is available. This equipment helps the technician make the repair properly so you won't have to come back a second time.

### Continued service technician training

Dealership technicians are continuously updated on the latest techniques and procedures to help them keep your Ford car or truck running at its best.

### Ford-paid repair programs after the warranty period

Sometimes Ford offers adjustment programs to pay all or part of the cost of certain repairs. These programs are intended to assist owners and are in addition to the warranty or to required recalls. Ask Ford or your dealer about such programs relating to your Ford or Lincoln-Mercury vehicle.

To get copies of any adjustment program for your vehicle or the vehicle of interest to you: Call Ford toll-free at 1-800-241-3673. Alaska/Hawaii call 1-800-241-3711 and in Georgia call 1-800-282-0959.

Or write Ford at:

Ford Customer Information System  
Post Office Box 95427  
Atlanta, Georgia 30347

We'll need your name and address; year, make and model vehicle, as well as engine size; and whether you have a manual or automatic transmission.

### Technical service bulletins

All vehicles need repairs during their lifetime. Sometimes Ford issues technical service bulletins (TSBs) and easy-to-read explanations describing unusual engine or transmission conditions which may lead to costly repairs, the recommended repairs, and new repair procedures. Often a repair now can prevent a more serious repair later. Ask Ford or your dealer for any such TSBs and explanations relating to your Ford or Lincoln-Mercury vehicle.

To get copies of these technical service bulletins and explanations for your vehicle or the vehicle of interest to you: Call Ford toll-free at 1-800-241-3673. Alaska/Hawaii call 1-800-241-3711 and in Georgia call 1-800-282-0959.

Or write Ford at:

Ford Customer Information System  
Post Office Box 95427  
Atlanta, Georgia 30347

We'll need your name and address; year, make and model vehicle, as well as engine size; and whether you have a manual or automatic transmission.

### Options availability

Options shown or described in this catalog are available at extra cost and may be offered only in combination with other options or subject to additional ordering requirements or limitations. Your Ford Dealer has the latest information.

### Product changes

Ford Division reserves the right to change product specifications at any time without incurring obligations.

### "Ask your Ford Dealer"

Following publication of this catalog, certain changes in standard equipment, options, prices and the like, or product delays, may have occurred which would not be included in these pages. Your Ford Dealer is your best source for up-to-date information.

## LTD CROWN VICTORIA FEATURES

ENGINEERING	Sedans	Wagon	Country Squire
5.0 liter (302 CID) EFI V-8	S	S	S
EEC-IV Electronic Engine Controls	S	S	S
Automatic Overdrive transmission	S	S	S
Electronic voltage regulator	S	S	S
DuraSpark electronic ignition	S	S	S
Power steering	S	S	S
Power front disc/rear drum brakes	S	S	S
Full coil spring suspension system with gas-pressurized shock absorbers	S	S	S
Maintenance-free battery	S	S	S
P215/75R x 14" WSW steel-belted radial tires	S	S	S
Concealed windshield wipers with fluidic washer system	S	S	S
Power ventilation system	S	S	S
Tiltaway door hinges	S	S	S
Mini spare tire	S	NA	NA
Conventional spare tire	0	S	S
Super Luxury sound insulation	S	S	S
<b>EXTERIOR</b>			
Quad rectangular halogen headlamps	S	S	S
Bumper guards, front and rear	S	S	S
LH remote-control mirror	S	S	S
Vinyl insert bodyside moldings	S*	S	0
Bright wheelip moldings	S	S	NA
Rocker panel moldings	0	S	0
Hood accent stripes	S	S	S
Bodyside accent stripes	S	S	NA
Decklid accent stripes	S	NA	NA
Wide bright lower door moldings	S	NA	NA
Padded rear half vinyl roof with brushed aluminum wrapover molding (except with optional Brougham Roof Treatment)	S	NA	NA
3-Way Doorgate with power window	NA	S	S
Woodtone bodyside and doorgate paneling	NA	NA	S
Deluxe wheel covers	S	S	S
<b>INTERIOR</b>			
Flight bench front seat with dual recliners and fold-down center armrest	S	S	S
Cloth seating surfaces	S	0**	0**
All-vinyl upholstery	0	S	S
Deluxe door trim with carpeted lower section	S	S	S
Automatic inertia seat back releases (2-door)	S	NA	NA
Color-keyed deluxe belts with comfort regulator feature	S	S	S
Seat belt reminder chime	S	S	S
16-ounce cut-pile carpeting	S	S	S
AM/FM stereo radio with four speakers (may be deleted for credit)	S	S	S
Quartz electric clock	S	S	S
4-spoke luxury steering wheel with center hub-mounted horn	S	S	S
Steering column-mounted controls for turn signals, headlamp high-beams, flash-to-pass feature, windshield wipers/washers	S	S	S
Courtesy lights in glove box, front ashtray, trunk (sedan), cargo area (wagon)	S	S	S
Rear door courtesy light switches (4-door)	S	S	S
Day/night rearview mirror	S	S	S
Deep-well trunk with carpeting	S	NA	NA
Fold-down rear seat	NA	S	S
Removable color-keyed load floor carpet	NA	S	S
Lockable storage compartments under load floor and in left rear side panel†	NA	S	S

\*When optional Two-Tone paint with tape stripes is ordered, standard moldings are deleted and made optional.  
\*\*Available as part of the Interior Luxury Group.  
†Rear side compartment not usable with optional automatic load leveling suspension.

## LTD CROWN VICTORIA OPTIONS

ENTERTAINMENT SYSTEMS	Sedans	Wagon	Country Squire
AM/FM stereo radio with cassette tape player (includes Dolby® Noise Reduction and auto-reverse)	0	0	0
Electronic AM/FM stereo search radio with cassette tape player (includes Dolby® Noise Reduction, auto-reverse and program search features)	0	0	0
Premium sound system. Six speakers and power amplifier.	0	0	0
Power radio antenna	0	0	0
Note: All stereo systems include dual front and rear speakers.			
<b>APPEARANCE</b>			
Brougham roof treatment (4-door)	0	NA	NA
Two-Tone paint with tape stripes	0	NA	NA
Luxury luggage compartment trim	0	NA	NA
Leather-wrapped steering wheel	0	0	0
<b>COMFORT AND CONVENIENCE</b>			
Split bench seats	0	0	0
Interior Luxury Group. See page 14.	0	0	0
DuraWeave vinyl seating surfaces	NA	0	0
Air conditioning. Manual or automatic control.	0	0	0
Tinted glass	0	0	0
Dual facing rear seats	NA	0	0
Convenience Group: Interval windshield wipers, RH visor mirror, Remote-control decklid release (sedan), Power doorgate lock (wagon), Trip odometer, Low oil level warning light, Low fuel warning light.	0	0	0
Pivoting front vent windows	0	0	0
Electronic digital clock	0	0	0
Rear window defroster	0	0	0
Autolamp system. Automatically turns headlamps on at night, off in daylight.	0	0	0
Tripfinder™ computer	0	0	0
Cornering lamps	0	0	0
Illuminated entry system	0	0	0
Light Group: Dual beam map light, Headlamps-on warning chime, Engine compartment light, Dual instrument panel courtesy lamps.	0	0	0
Speed control	0	0	0
Tilt steering wheel	0	0	0
RH remote-control convex mirror	0	0	0
Interval windshield wipers	0	0	0
Dual illuminated visor mirrors	0	0	0
Deluxe luggage rack. Air deflector available through Ford Dealers.	NA	0	0
Engine block immersion heater	0	0	0
Automatic parking brake release	0	0	0
<b>PERFORMANCE</b>			
Heavy-duty trailer towing package	0	0	0
Automatic load leveling suspension	0	0	0
Traction-Lok rear axle	0	0	0
Heavy-duty suspension	0	0	0
Handling suspension	0	NA	NA
Heavy-duty battery	0	0	0
California emissions system	0	0	0
High altitude emissions system	0	0	0
<b>POWER ASSISTS</b>			
6-way power seat adjustment. For driver only or driver and passenger.	0	0	0
Power Lock Group: Door locks, Decklid release (sedan), Doorgate lock (wagon).	0	0	0
Power side windows (lock-out switch in 4-dr /wagon)	0	0	0
<b>PROTECTION</b>			
Remote locking fuel door	0	0	0
Vinyl insert bodyside moldings. Optional on sedans with Two-Tone paint.	S	S	0
Rocker panel moldings	0	S	0
Bumper rub strips	0	0	0
Carpeted floor mats, front and rear	0	0	0
<b>TIRES</b>			
P205/75R 15" WSW	0	0	0
All-season P215/70R 15" WSW, conventional or puncture-sealant	0	0	0
Conventional spare tire	0	S	S
<b>WHEELS/WHEEL COVERS</b>			
Locking wire-style wheel covers (4)	0	0	0
Cast aluminum wheels (4)	0	0	0

## COLORS AND TRIMS

Interior Trim Colors					Exterior Paint Colors
Oxford Grey	Canyon Red	Midnight Blue	Clove Brown	Sand Beige	
•	•	•	•	•	Black
•	•	•	•	•	Oxford White
•	•	•	•	•	Med. Charcoal Met.
•	•	•	•	•	Silver Met.
•	•	•	•	•	Med. Canyon Red Met.
•	•	•	•	•	Midnight Canyon Red Met.
•	•	•	•	•	Midnight Blue Met.
•	•	•	•	•	Pastel Regatta Blue
•	•	•	•	•	Light Regatta Blue Met.
•	•	•	•	•	Dark Clove Brown Met.
•	•	•	•	•	Sand Beige
•	•	•	•	•	Med. Sand Beige
					<b>Two-Tone Colors</b>
•	•	•	•	•	Med. Canyon Red Met./Midnight Canyon Red Met.
•	•	•	•	•	Midnight Blue Met./Light Regatta Blue Met.
•	•	•	•	•	Black/Med. Charcoal Met.
•	•	•	•	•	Sand Beige/Med. Sand Beige
•	•	•	•	•	Silver Met./Med. Charcoal Met.

Some of the paint and trim colors are shown in this catalog. On the printed page, of course, colors are at best only representative of the originals. Your Ford Dealer can show you actual samples of the paint colors and trim materials presented above as well as Two-Tone paint combinations. Ask him also about paint and trim color availability with the following vinyl roof colors. **Vinyl Roof Colors:** Black, Oxford White, Canyon Red, Medium Sand Beige, Sand Beige, Midnight Blue, Light Grey.

Black	Midnight Blue Met.
Oxford White	Pastel Regatta Blue
Med. Charcoal Met.	Light Regatta Blue Met.
Silver Met.	Dark Clove Brown Met.
Med. Canyon Red Met.	Sand Beige
Midnight Canyon Red Met.	Med. Sand Beige

Have you driven  
a Ford...lately?



FORD LTD  
CROWN VICTORIA



008-Ann. Litho in U.S.A. 8/84