

CROWN VICTORIA

1992



A new standard for full-sized sedans.

The new Ford Crown Victoria has just raised the standards for full-sized passenger cars. Its aerodynamic styling, interior room, trunk room, power and handling set new heights its competition can only hope to reach.

A roomier interior.

Crown Victoria's interior is everything you'd expect from a car of its stature, and more. To start, it has even more passenger room than before. Split bench seats individually recline. Gauges are more readable and controls are within easy reach. Even rear seat passengers have plenty of room to stretch out.

A more powerful, yet more fuel-efficient engine.

The all-new 4.6 liter modular V-8 engine produces 25% more horsepower, yet is more fuel-efficient than its predecessor.* It is also substantially quieter while offering advancements like an overhead cam and sequential electronic fuel injection. The end result is smooth, responsive performance.

*EPA estimated mpg 18 city/25 hwy.

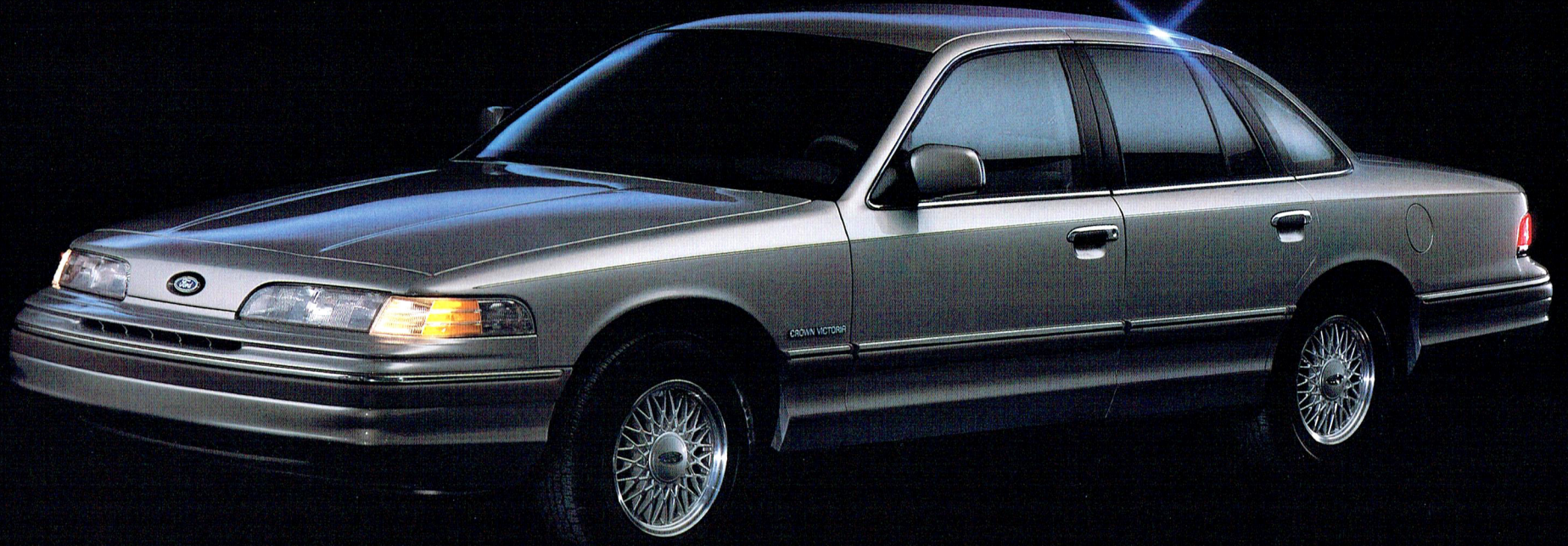
Anti-lock brakes with traction assist.

This option can greatly enhance Crown Victoria's performance under tricky road conditions. The anti-lock brake system (ABS) not only reduces your stopping distance on wet surfaces, it also helps you retain steering control, even under hard braking situations. Traction assist uses the ABS technology to prevent the rear wheels from spinning at different speeds, thus improving traction when starting up under slippery conditions. A standard driver's airbag supplemental restraint system is the finishing touch to Crown Victoria's safety features.

Comfort you can handle.

Crown Victoria's suspension gives it the kind of handling not normally associated with full-sized cars. You'll immediately notice how precise and responsive it is. For enhanced smoothness, an optional rear air suspension automatically adjusts its air springs, depending on the load. Speed sensitive power steering reacts to your driving situation for a better road feel. With all it's got going for it, the New Ford Crown Victoria doesn't take a back seat to any car on the road.

INTRODUCING THE NEW 1992 FORD CROWN VICTORIA



OTHER CARS JUST DON'T MEASURE UP.



Have you driven a Ford...lately?