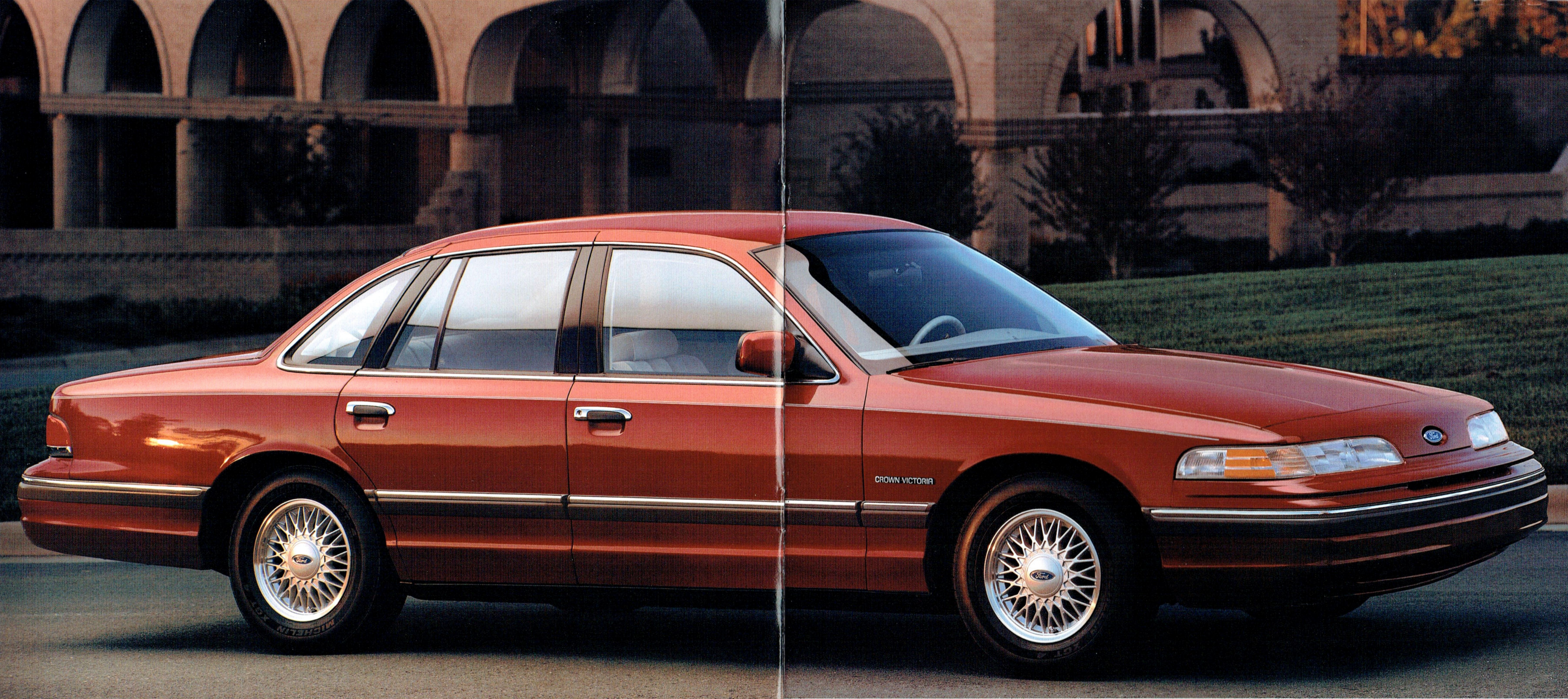


F O R D 1 9 9 2

Crown Victoria





A COMPELLING
NEW LEVEL OF
FULL-SIZE CAR
ENJOYMENT.

"You've got to drive it to appreciate it." It's a declaration you've probably heard many times in your car-buying career, one of those statements that tend to sound a bit too familiar. Using it risks overuse. But it's a risk we'll have to take. The truth is, while retaining its smooth, comfortable

ride, Crown Victoria has undergone dramatic improvements in its handling abilities which can only reveal themselves out on the road. There's a 4.6L V-8 that's both more powerful and more fuel efficient than the engine it replaces. Speed-sensitive steering and 4-wheel power disc brakes

are standard. An anti-lock brake system with a sophisticated Traction Assist feature is available. You've got to drive it to appreciate it. And, of course, Crown Victoria is a product of Ford's continuing commitment to quality and a reflection of the design leadership Ford has brought to the 90s.

Crown Victoria LX shown in Medium Cranberry Clearcoat Metallic with Preferred Equipment Package 113A.

AN INTERIOR
SOLIDLY IN THE
CROWN VICTORIA
TRADITION,
BUT ROOMIER.
NICER. MORE
CONTEMPORARY.

Six-passenger spaciousness has long been the hallmark of the Ford Crown Victoria, its reason for being. That's truer than ever in 1992. The interior is actually more spacious than before. And this roomy environment to which so many people have become accustomed now has a rich, smooth, more contemporary appearance and feel. The deep-well trunk, with its low liftover height to facilitate loading, provides spaciousness unequalled in its class.

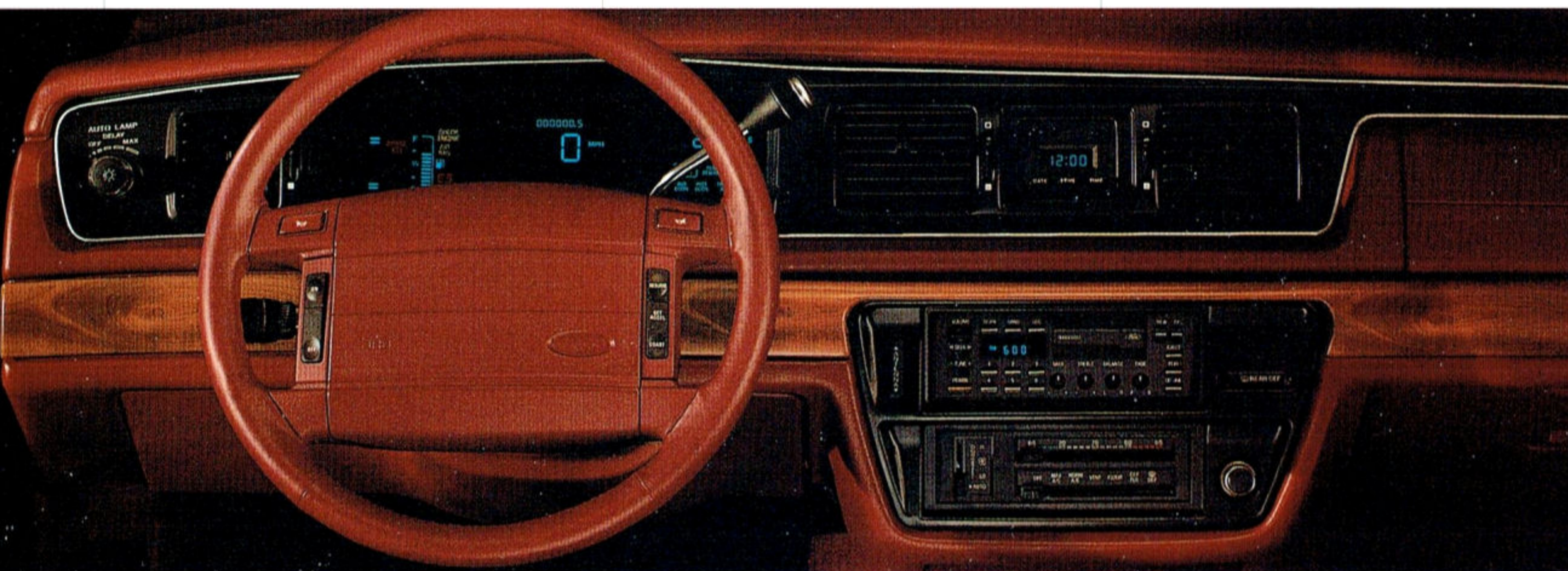
One of the first things you're likely to notice about this Crown Victoria is the appearance of the instru-

ment panel. It exemplifies the unification of function and style. Radio and climate controls are centered vertically on the panel within easy reach. The large glove compartment is illuminated for convenience and lockable to provide an extra measure of security.

The analog gauge cluster

is designed for excellent readability. The large circular speedometer is electrically driven and flanked by prominent gauges for volt-meter/fuel level (left) and temperature/oil pressure (right). Compact and driver oriented, the cluster features sharp, legible white-on-black graphics (electronic instrumentation, with automatic temperature control and a handy Tripminder® computer, is optional).

A careful combination of traditional comfort and modern refinement makes the 1992 Crown Victoria's interior compartment a pleasurable sanctuary indeed.



Instrumentation is logically positioned and easy to read. Some equipment shown is optional.



Crown Victoria's split bench seats recline individually and provide separate fold-down armrests for the driver and front passenger. Shown here in Cranberry.

An air bag supplemental restraint system (SRS) is now offered for the right front passenger as an option (see your dealer for date of availability).



Crown Victoria's shoulder belts have a comfort adjustment to help them fit people of all sizes and shapes.



The LX interior is shown above in Cranberry with Preferred Equipment Package 113A and optional leather seating surfaces.



With over 20 cubic feet of space and a "deep well" design, Crown Victoria's trunk is the largest in its class and can handle a substantial collection of cargo.

THE TOURING
SEDAN OFFERS
ITS OWN
SPECIAL BRAND
OF DRIVING
PLEASURE.

The Touring Sedan is a new addition to the lineup and it's a car that really gets down to business. Dual exhausts bring the horsepower rating of the 4.6L V-8 up to 210. Special springs, shocks and stabilizer bars sharpen Crown Victoria's already impressive handling skills. Anti-lock brakes and the Traction Assist system prepare it for adversity. Hefty P225/70R15 "touring" tires, matched with argent cast aluminum wheels, handle those four all-important contact points. In short, it's the kind of automobile that lists the garage as the last place on earth it wants to be. Emphatically.

The Touring Sedan also looks the part of the performer with special interior and exterior trim components that strongly hint at the capability on board.

Nor are comfort and convenience neglected. Unique seats feature leather upholstery with cloth inserts and provide six-way power for the driver and front passenger. The special perforated leather-wrapped steering wheel includes speed control, and the light/decor group (detailed on page 15) is also standard equipment.

If you truly love to drive, the Touring Sedan might indeed be just the car for you.



The Touring Sedan's Light Titanium leather/cloth interior shown with Preferred Equipment Package 115A.

The Touring Sedan is shown above in Medium Titanium Clearcoat Metallic with Preferred Equipment Package 115A.



CROWN VICTORIA

YOU'VE COME TO
EXPECT ROOM
AND COMFORT
FROM FULL-SIZE
AUTOMOBILES.
RAISE YOUR
EXPECTATIONS.

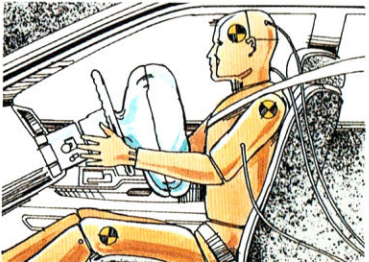
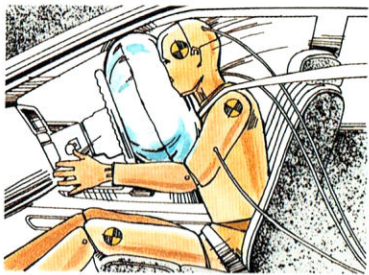
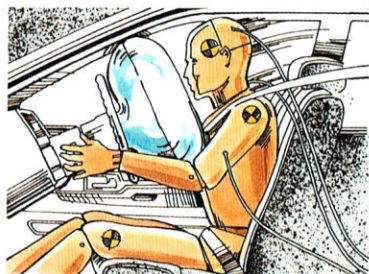
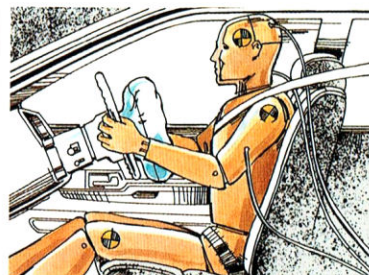
Some things never go out of style. This is certainly the case when it comes to automobiles. The traditional benefits of the full-size car (room, comfort and riding smoothness) are every bit as desirable now as they've always been.

The challenge for the Ford engineers and designers who developed this new Crown Victoria was to retain these important benefits and at the same time make advancements in vehicle performance through skillful engineering and advanced technology.

The extent to which this challenge has been met can be dramatically demonstrated on the road. The comfort and smoothness are undeniably there.

But those who appreciate the sense of command and

IN CROWN
VICTORIA,
TECHNOLOGY
HELPS MAKE
DRIVING MORE
PREDICTABLE.



Current computer technology provides help with control. The optional anti-lock brake system shortens stopping distances on wet surfaces by inhibiting brake-induced wheel lockup under most operating conditions. It also helps facilitate steering while braking and includes a sophisticated electronic traction assist feature. Traction Assist helps keep the rear wheels from spinning while accelerating or traveling at low

ally improves stability under adverse conditions.

As an extra protection measure, Crown Victoria includes a driver's air bag supplemental restraint system (SRS) as standard equipment. An air bag SRS for the right front passenger is offered as an option (see your dealer for date of availability). These



speeds, providing greater driver control and less likelihood of getting stuck. It improves traction on slippery roads, improves traction on grades when ice or snow is present, and gener-

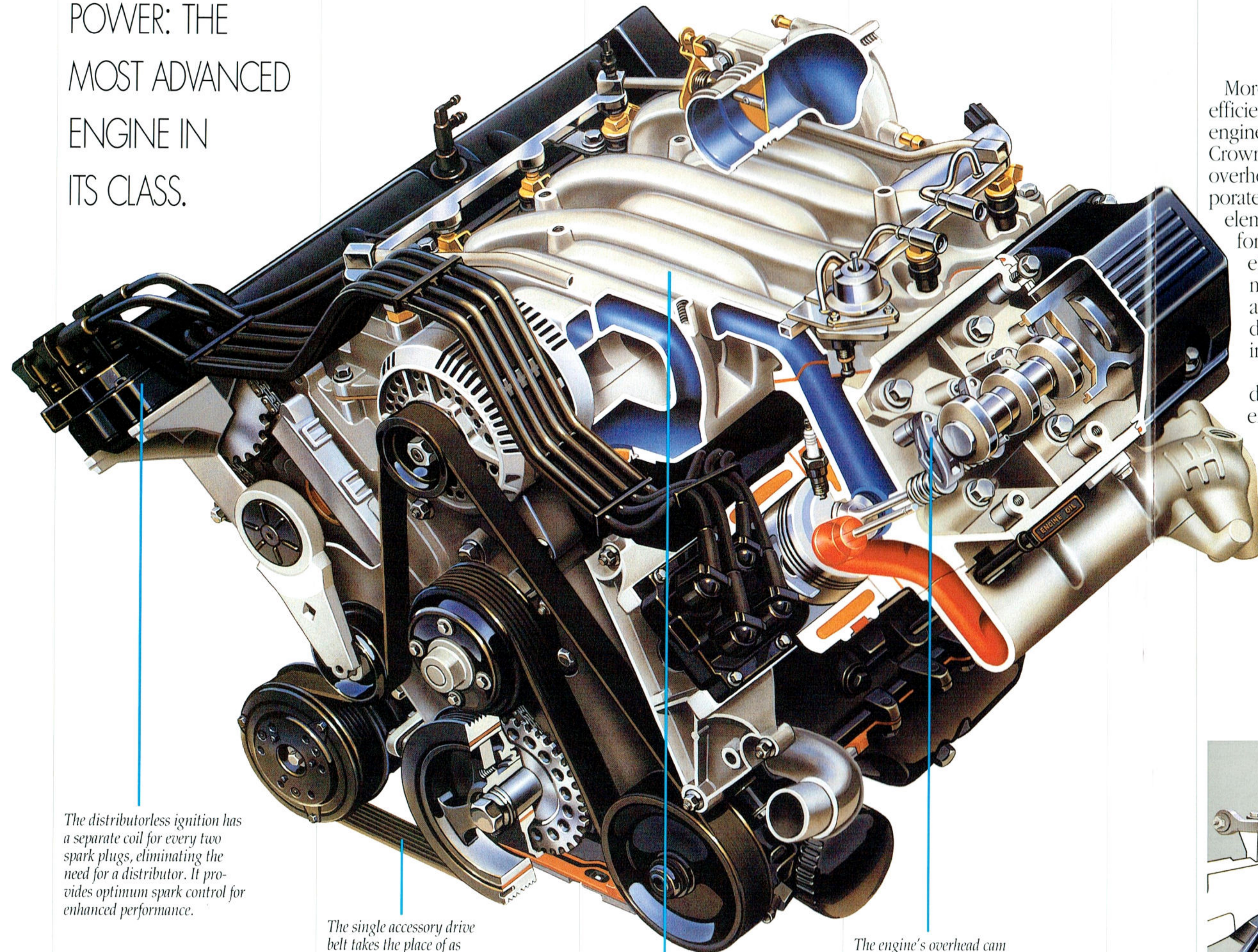
systems are, of course, intended to be used in conjunction with the properly worn safety belts. Used together, air bags and safety belts are one of the best restraint systems in cars today.

Traction Assist features electronic sensors which monitor wheel rotation to assure that proper traction is being maintained.

A driver's air bag supplemental restraint system is standard equipment on all Crown Victorias.



SOPHISTICATED
POWER: THE
MOST ADVANCED
ENGINE IN
ITS CLASS.



The distributorless ignition has a separate coil for every two spark plugs, eliminating the need for a distributor. It provides optimum spark control for enhanced performance.

The single accessory drive belt takes the place of as many as three, reducing complexity, and never needs adjustment. Accessories such as the alternator are bolted directly to the engine to improve belt durability and reduce noise and vibration.

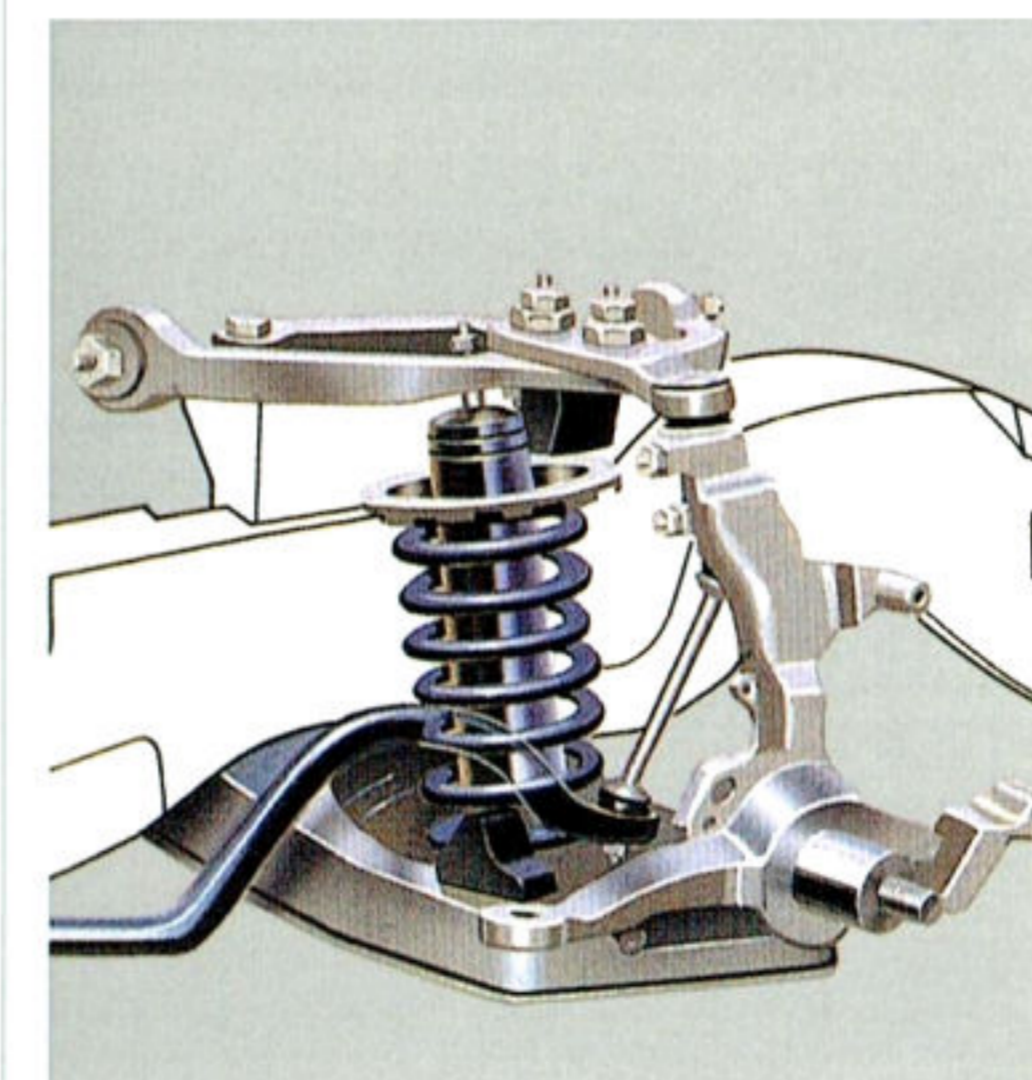
Crown Victoria's sequential electronic fuel injection provides an injector for each cylinder for very precise, efficient metering. The 4-hole injectors help reduce performance-robbing deposits.

The engine's overhead cam design allows the spark plug to be located near the center of the combustion chamber, promoting more efficient burning and better performance.

Roller finger followers provide roller contact with the camshaft lobe for reduced friction, increased power and efficiency.

More power with better efficiency is what today's engineering is all about. Crown Victoria's 4.6 liter V-8 overhead cam engine incorporates significant design elements that enhance performance as well as fuel efficiency (EPA estimates were unavailable at press time. See your dealer for mileage information).

An overhead cam design and advanced engineering enable the 4.6 to get over 25% more horsepower than its predecessor — 190 at 4,200 rpm. Yet it's designed for better fuel efficiency, thanks to the fast-burn combustion



Adjustment cams on the front suspension's upper control arms allow precise wheel alignment for better handling and more even tire wear.



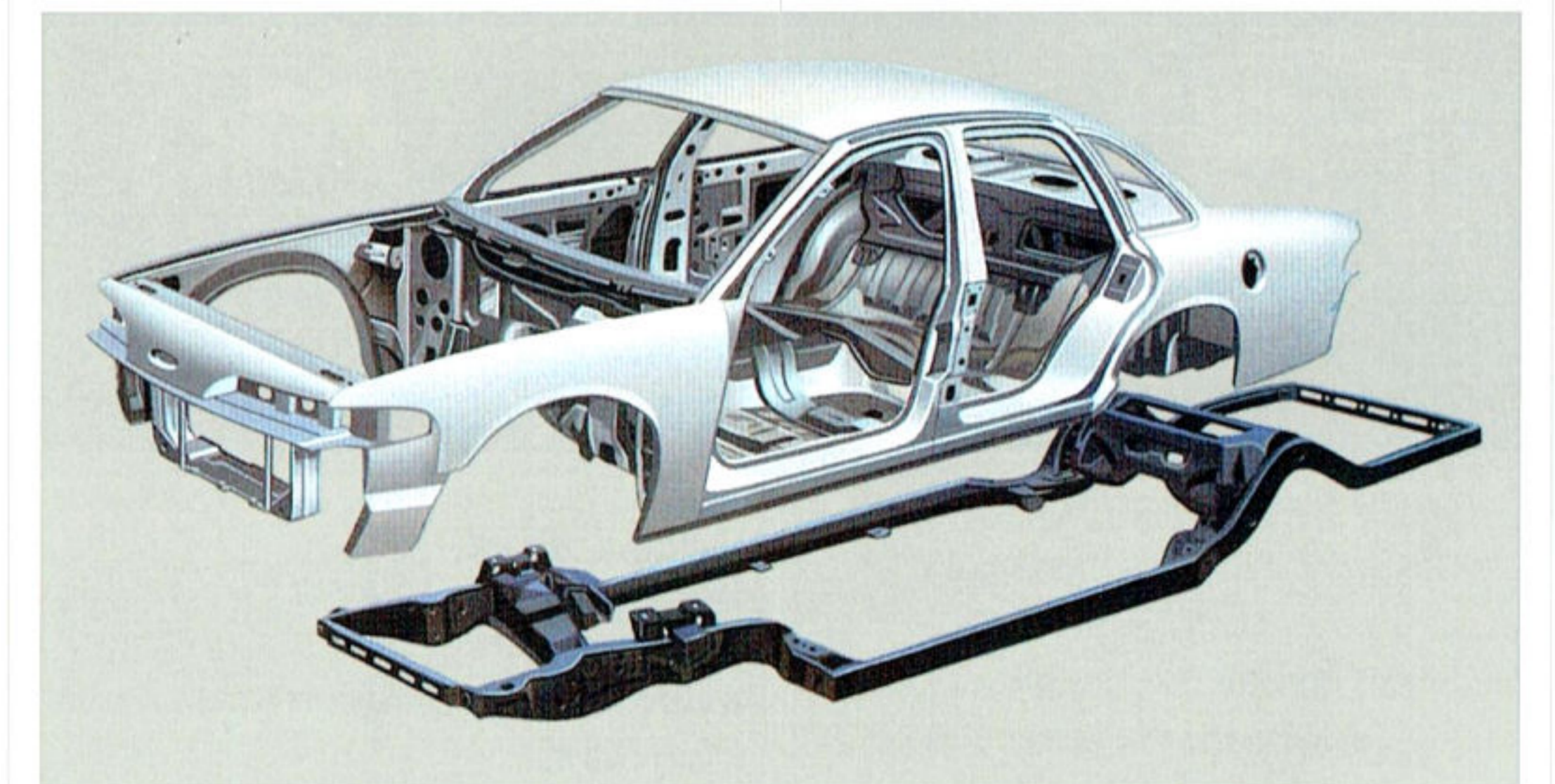
chambers and a number of components, such as roller finger followers (see left), that are designed to help reduce power-wasting friction. All this helps make the 4.6L V-8 the most advanced engine in its class.

Dual exhausts, included with the optional trailer towing package and handling/performance package, help the engine develop an additional 20 horsepower for a total of 210. And since Crown Victoria can tow up to 5,000 pounds with the optional trailer towing package, the extra power can be put to good use indeed.

The 4.6 is also a quieter powerplant. A deep-skirt block design and deep-mounted head bolt attachment points are among many features which reduce engine noise and vibration.

And because sound insulation was such a high priority in Crown Victoria's design, sound deadening materials are used extensively in strategic areas of the body to help keep normal vehicle operating sounds out of the interior compartment.

Crown Victoria's suspension system has been extensively revamped to provide a more controlled ride. The front end, for example, is



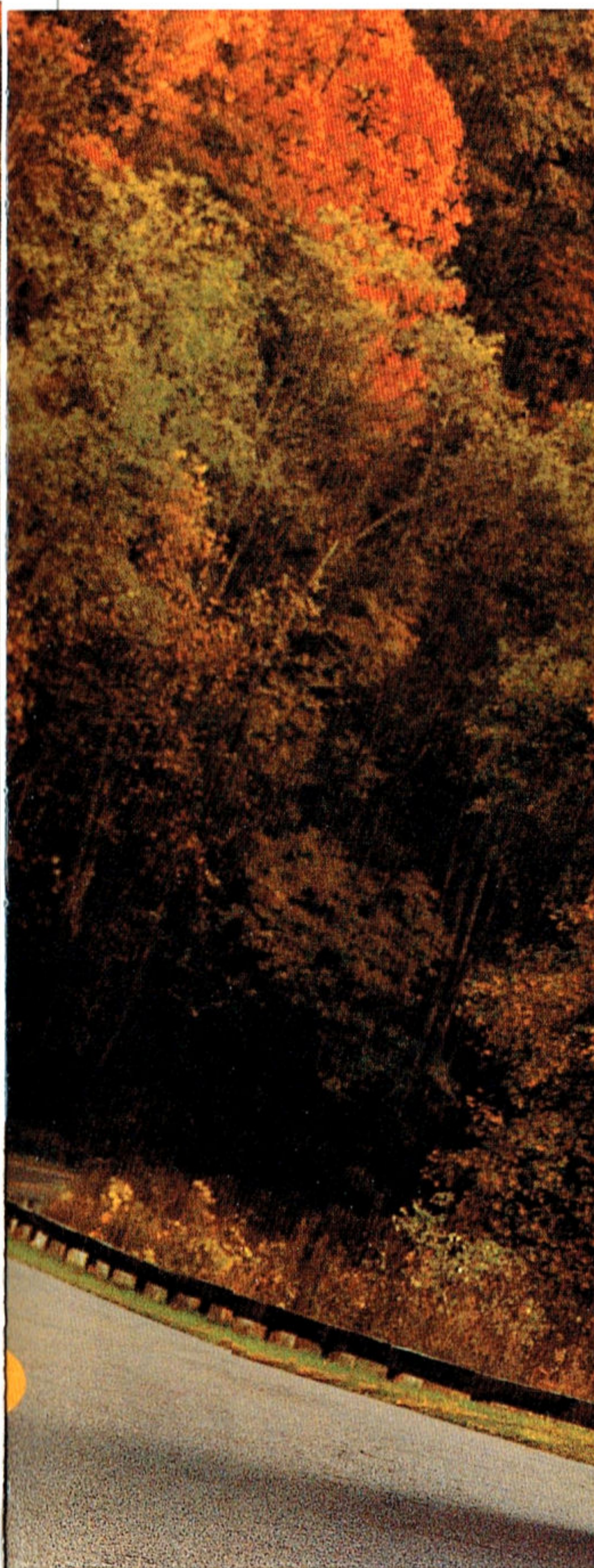
designed for better directional stability and reduced tire wear. New front and rear stabilizer bars produce better roll control. And the nitrogen gas-pressurized shock absorbers have been tuned to optimize ride comfort and vehicle control.

For those who frequently have occasion to take a full entourage and/or a lot of luggage along, the optional rear air suspension automatically adjusts its air springs based on the load. The result is enhanced ride smoothness whether it's just the driver or six adults and a generous collection of baggage and other gear. It's a useful and convenient system, and it's not available on other automobiles in Crown Victoria's class.

Another benefit of body-on-frame construction is peace and quiet. It's recognized as one of the most effective ways to isolate the passenger compartment from noise, vibration and harshness.



The sleeker shape announces a Crown Victoria with performance attributes that can help straighten out twisting roadways ...



Crown Victoria LX is shown above in Medium Cranberry Clearcoat.

Engineered for capability and control as well as comfort.

The traditional benefits of the full-size car (room, comfort and riding smoothness) are just as desirable as they've always been. The challenge for this Crown Victoria was to retain these benefits and at the same time make advancements in performance through skillful engineering and advanced technology.

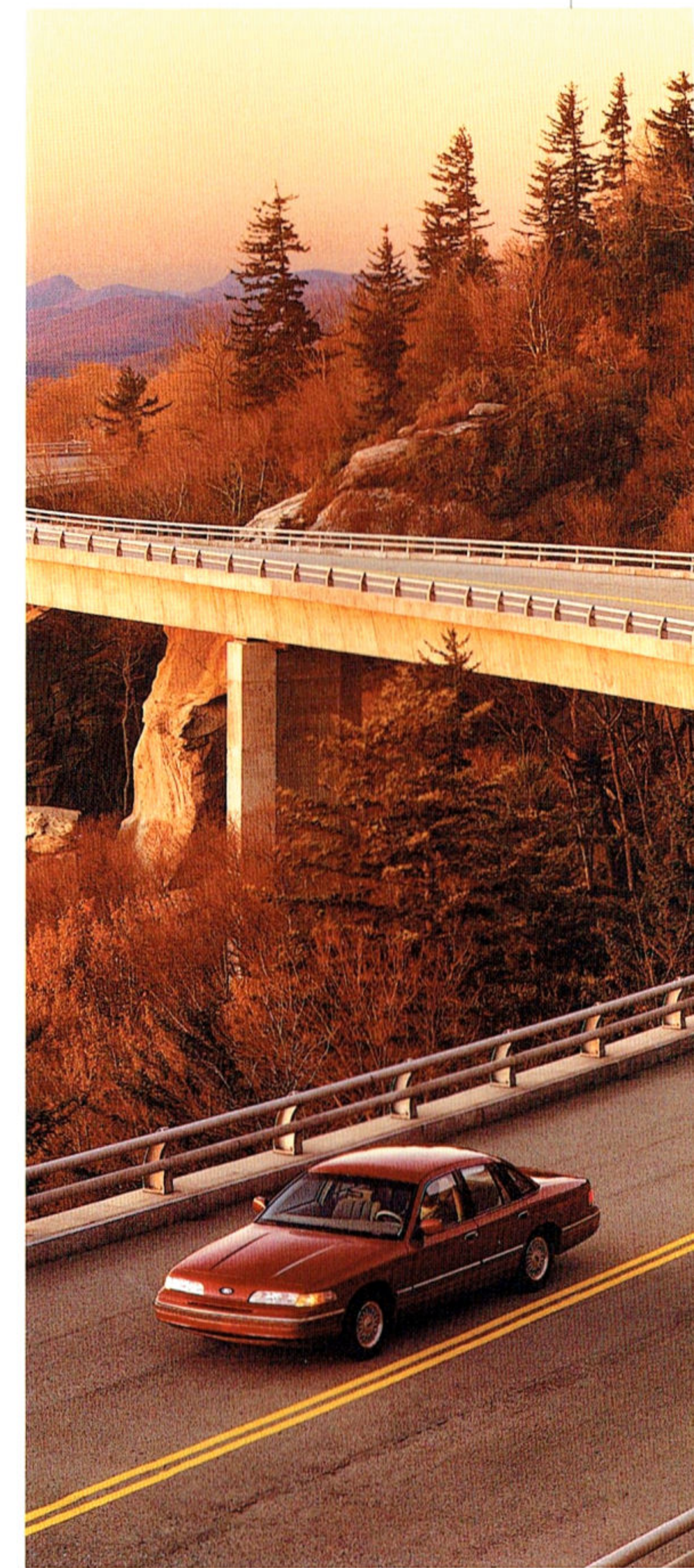
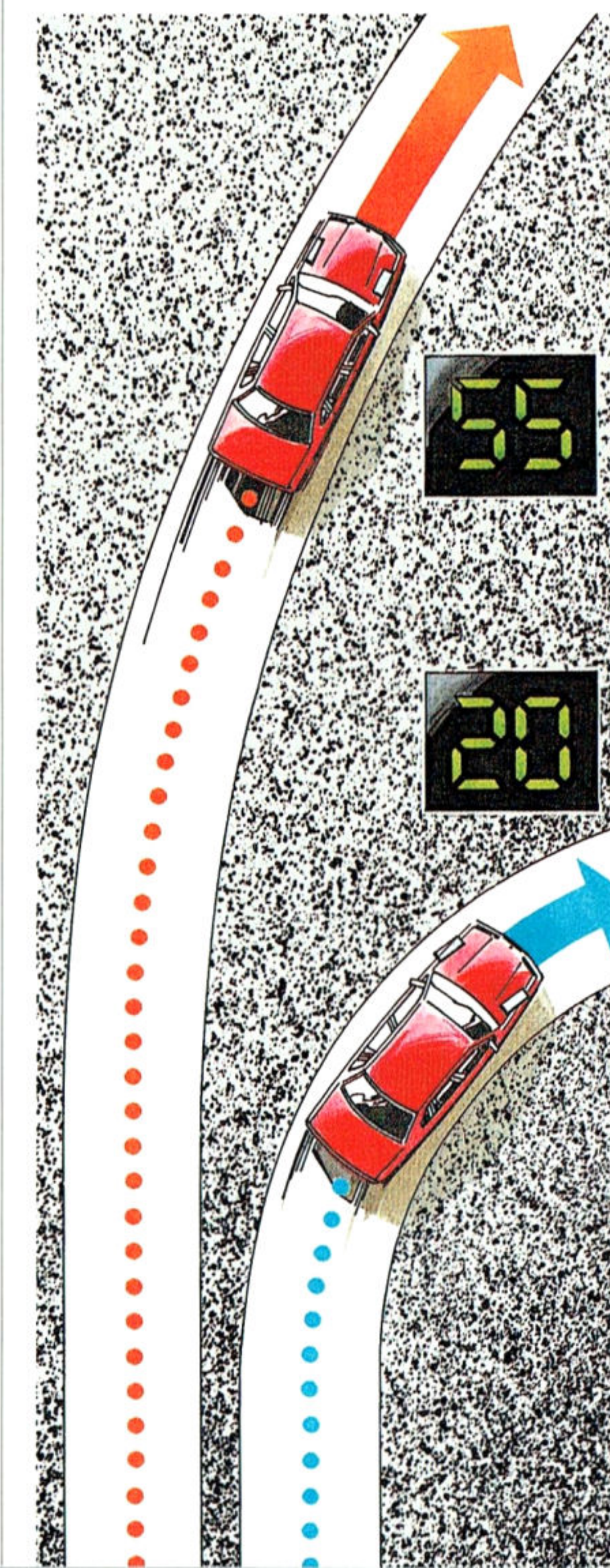
The extent to which this challenge has been met can be dramatically demonstrated on the road. The comfort and smoothness are undeniably there.

But for those who appreciate the sense of command and confidence that more deliberate suspension and steering systems provide, this Crown Victoria offers a new level of performance for a full-size car. Its suspension has been redesigned, redeveloped

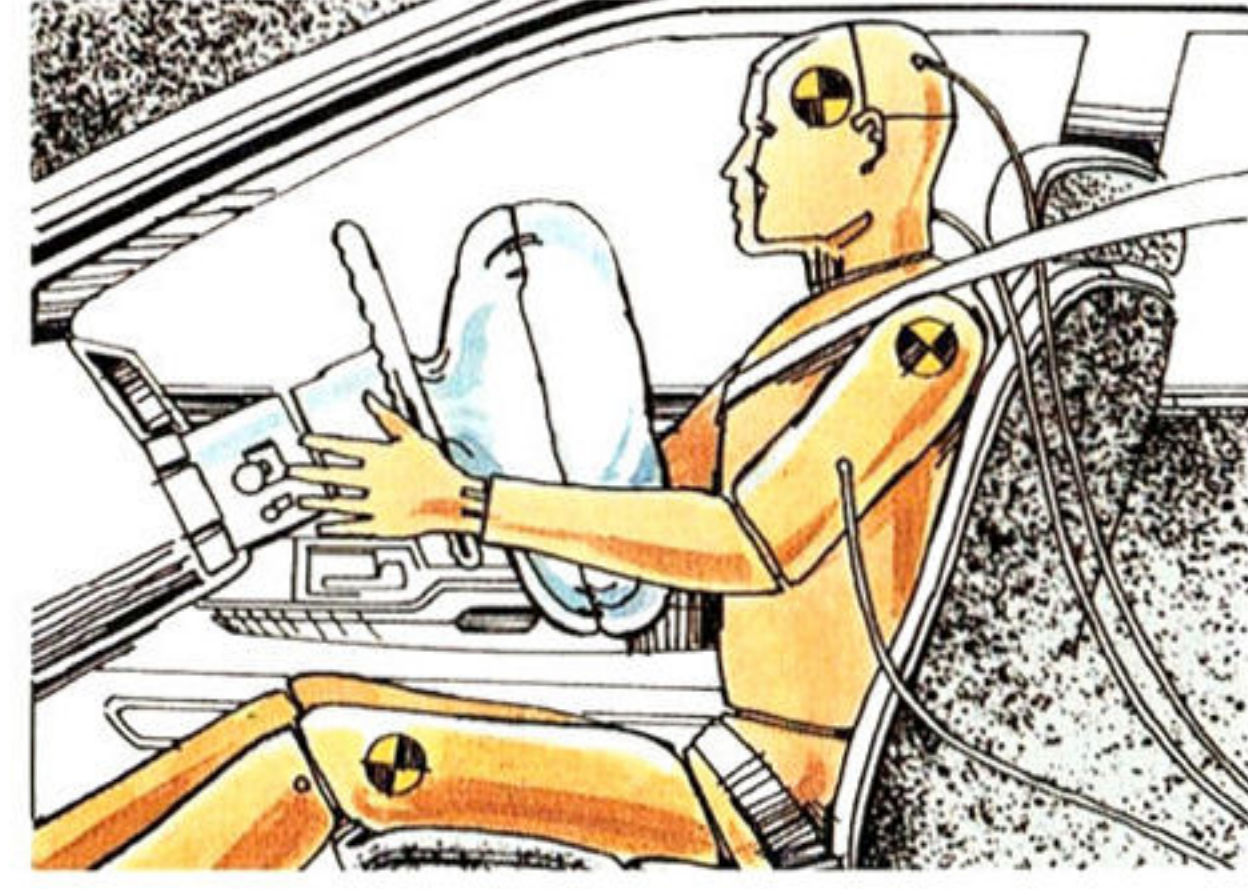
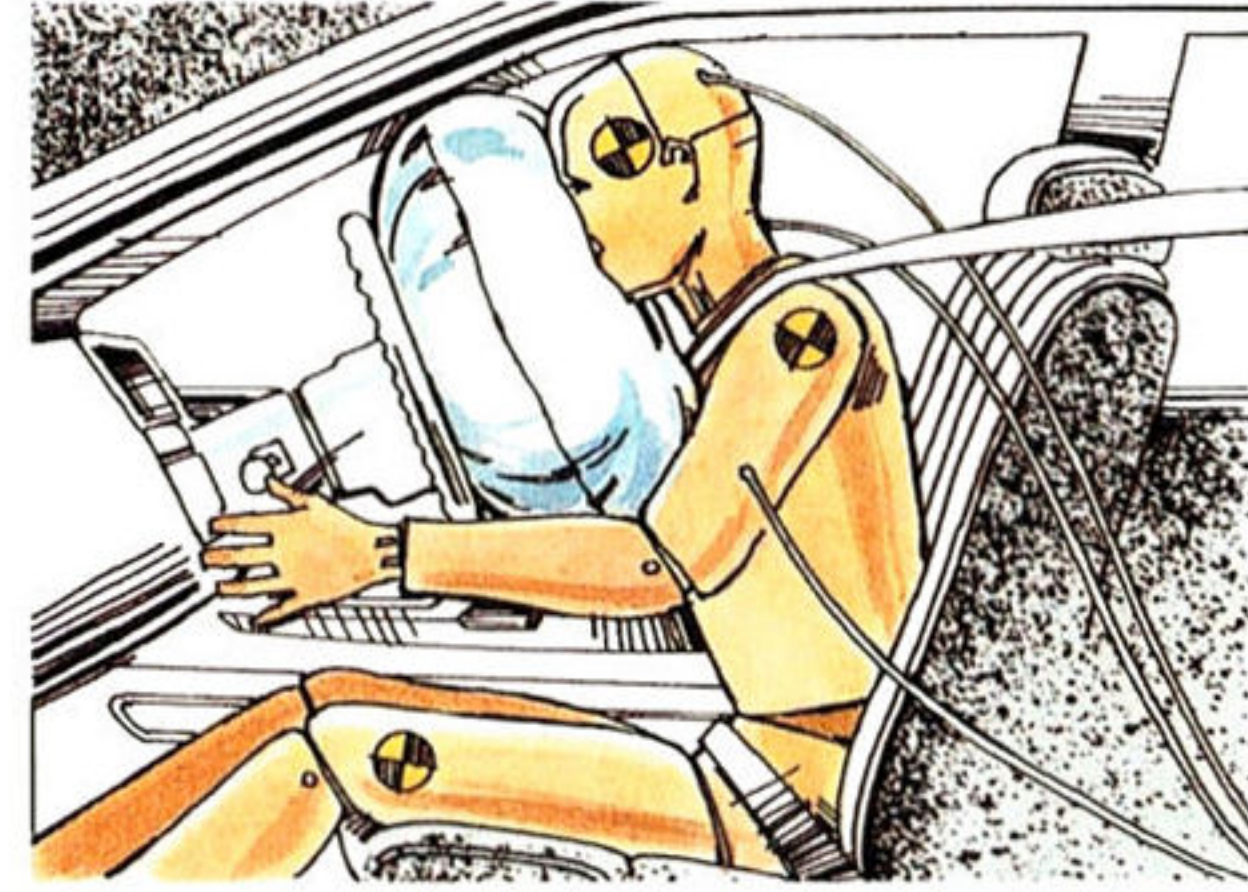
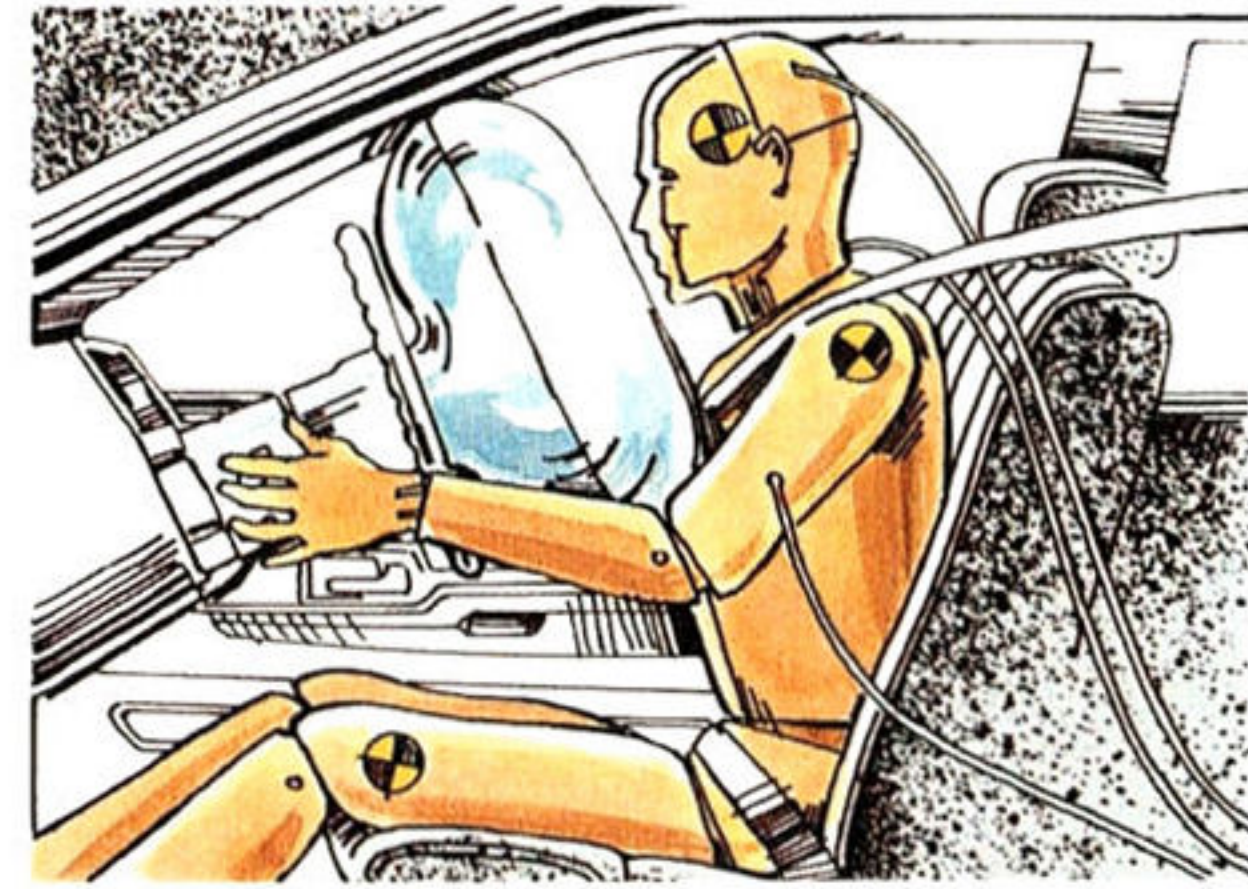
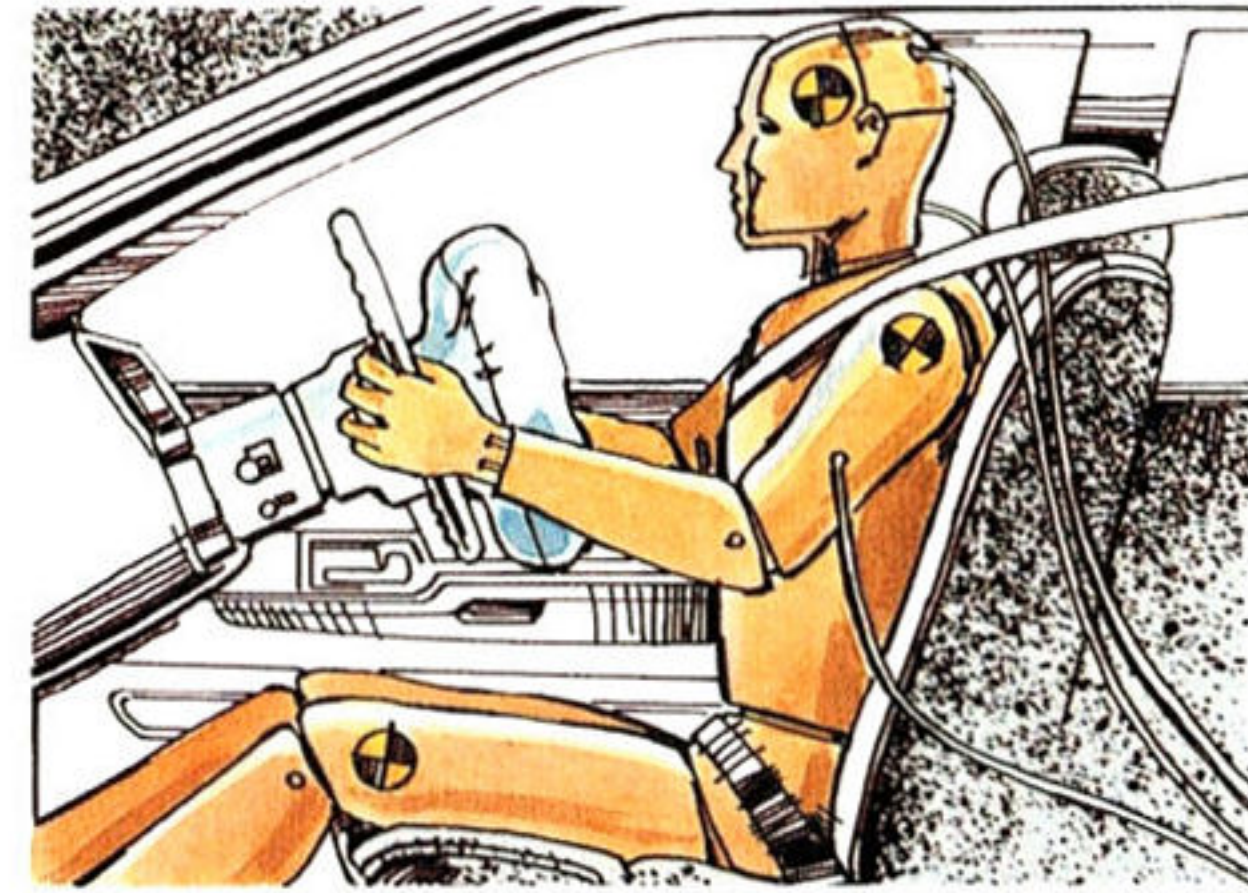
Speed-sensitive steering adjusts the degree of power assist according to the circumstances: maximum assist for low-speed maneuvers, progressively less for a better road feel at higher speeds.

and fitted with new front and rear stabilizer bars to effect handling that's more precise and controlled while retaining a smooth and comfortable ride.

In addition, the variable-assist power steering is electronically "speed sensitive." This speed-sensitive steering system delivers full power assist to facilitate low-speed maneuvering and progressively decreases its power assist for a better feel of the road at cruising speeds.



With a redesigned suspension and the addition of speed-sensitive steering, Crown Victoria's handling is more precise and controlled.



Standard equipment includes a driver's-side air bag supplemental restraint system for added protection.

Computer technology that's unique in its class helps the driver maintain control.

In addition to suspension and steering systems designed for control, Crown Victoria now provides the reassuring stopping power of standard 4-wheel power disc brakes. New all-season steel-belted radial tires, developed specifically for Crown Victoria, are more responsive. More capability for the car translates to more confidence for the driver.



Computer technology also provides help with control. The optional anti-lock brake system shortens stopping distance on wet and slippery surfaces by inhibiting brake-induced wheel lockup under most operating conditions. It also helps facilitate steering while braking and includes a sophisticated electronic traction assist feature. Traction Assist, unique in its class, helps keep the rear wheels from spinning while accelerating or traveling at lower speeds, providing greater driver control and less likelihood of getting stuck. It improves traction on slippery roads, improves traction on grades when ice or snow is present, and generally improves stability under adverse conditions.

As an extra protection measure, Crown Victoria includes a driver's-side air bag supplemental restraint system as standard equipment. This system, of course, is intended to be used in conjunction with the properly worn safety belts. When used together, air bags and safety belts comprise one of the best occupant restraint systems available today.



Traction Assist features electronic sensors which monitor wheel rotation to assure that proper traction is being maintained.

If the sensors detect wheel slippage, the brakes are automatically applied to the spinning wheel, transferring torque to the wheel with traction.

Crown Victoria is shown above in Titanium Frost Clearcoat.

6-YEAR/100,000-MILE CORROSION PROTECTION

Corrosion warranty coverage for outer body panel rust-through is 6 years or 100,000 miles, whichever comes first. See your Ford Dealer for a copy of this limited warranty.



Optional Ford Extended Service Plans cover major components on new Ford cars and light trucks for longer than the vehicle's basic warranty. Your Ford Dealer has full details.

MOTORCRAFT REPLACEMENT PARTS

Genuine Ford and Motorcraft original equipment replacement parts meet the

same high standards as those installed in production.



Ford Credit's Red Carpet Lease® program makes driving a new Ford even more pleasurable. With it, qualified lessees can drive a new car or truck every few years, and can generally select a more expensive vehicle (or one with more options) at a lower monthly payment. See your dealer today for details on Red Carpet Lease.

OPTIONS AVAILABILITY

Options shown or described in this catalog are available at extra cost and may be offered only in combination with other options or subject to additional ordering requirements or limitations.

