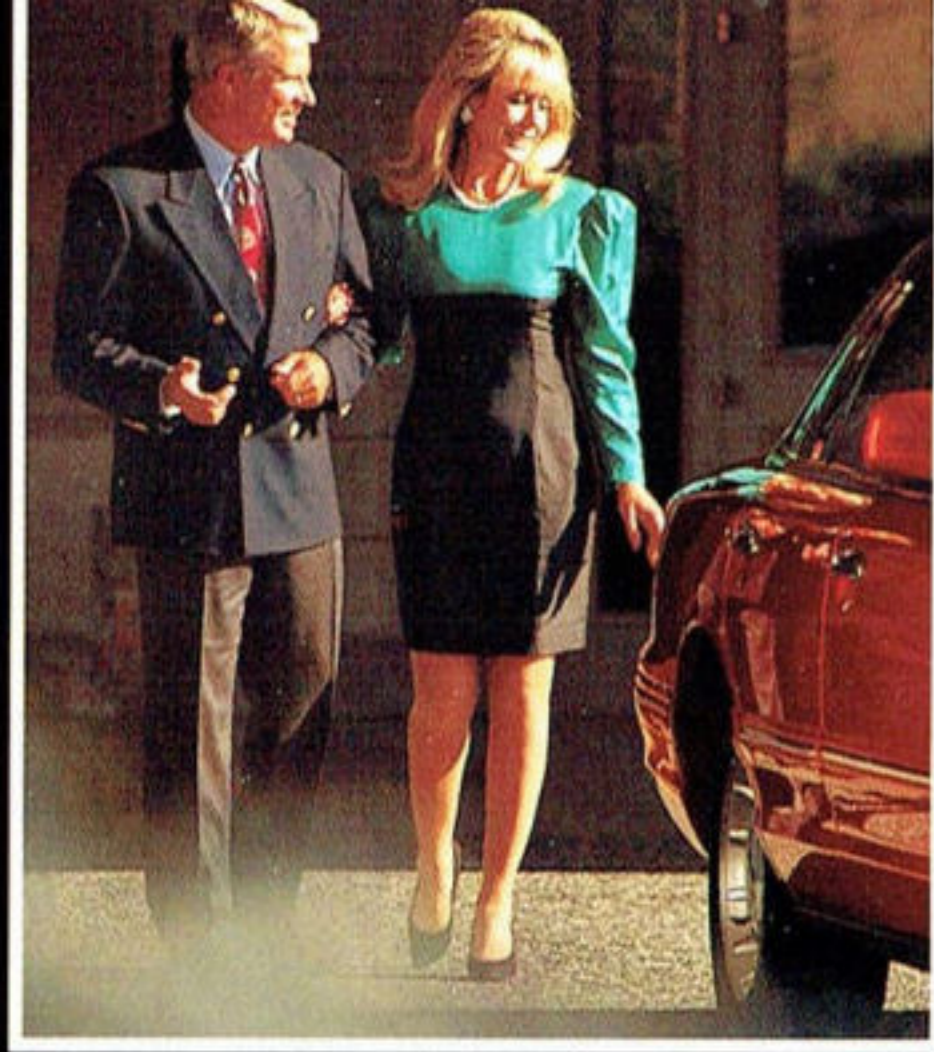


1 9 9 6

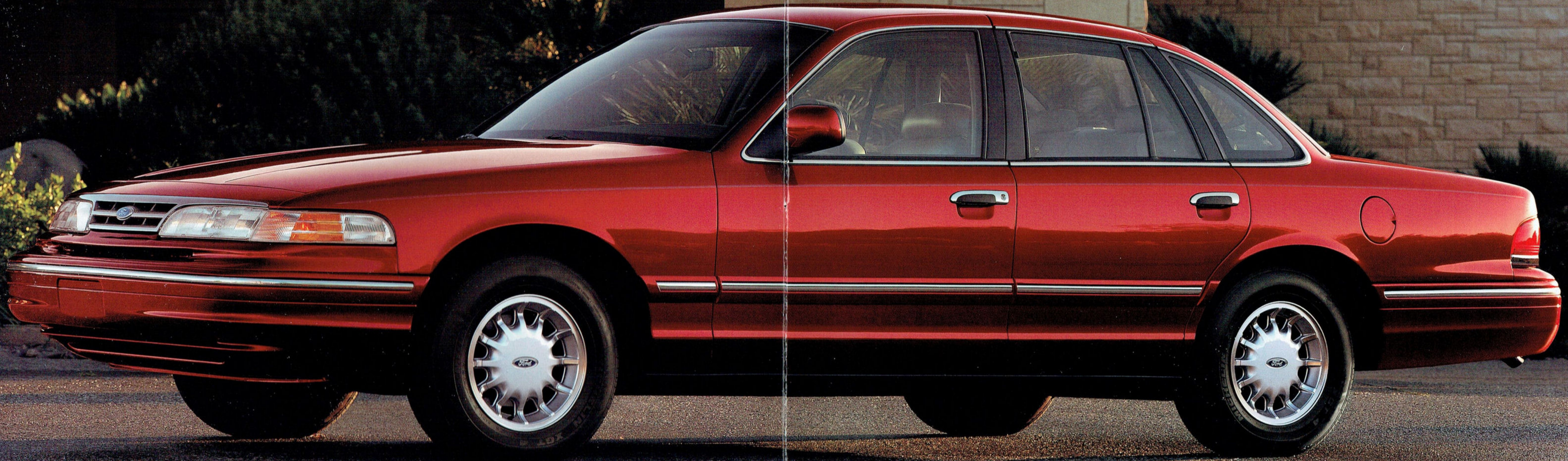


CROWN VICTORIA





Few cars on the road can match its level of comfort



▲ *Crown Victoria LX in Toreador Red Clearcoat Metallic shown with Preferred Equipment Package 114A. All models feature the strength of body-on-frame construction.*

Crown Victoria sets the standards for automotive comfort and convenience. There's not just ample space, but full 6-passenger accommodations with room to spare. And not just a pleasant ride, but one that can only be described as remarkably smooth.



◀ *Crown Victoria LX in Light Saddle Clearcoat Metallic shown with Preferred Equipment Package 113A.*

Comfort and convenience the way they were meant to be experienced



▲ The Crown Victoria LX interior is seen here with Preferred Equipment Package 114A and optional leather seating surfaces in Saddle. Crown Victoria's roominess makes getting in or out easy.

The spacious 20.6-cubic-foot deep-well trunk is among the largest in its class and has a low lift-over height for loading convenience.



▲ Rear passengers benefit from their own heat ducts.

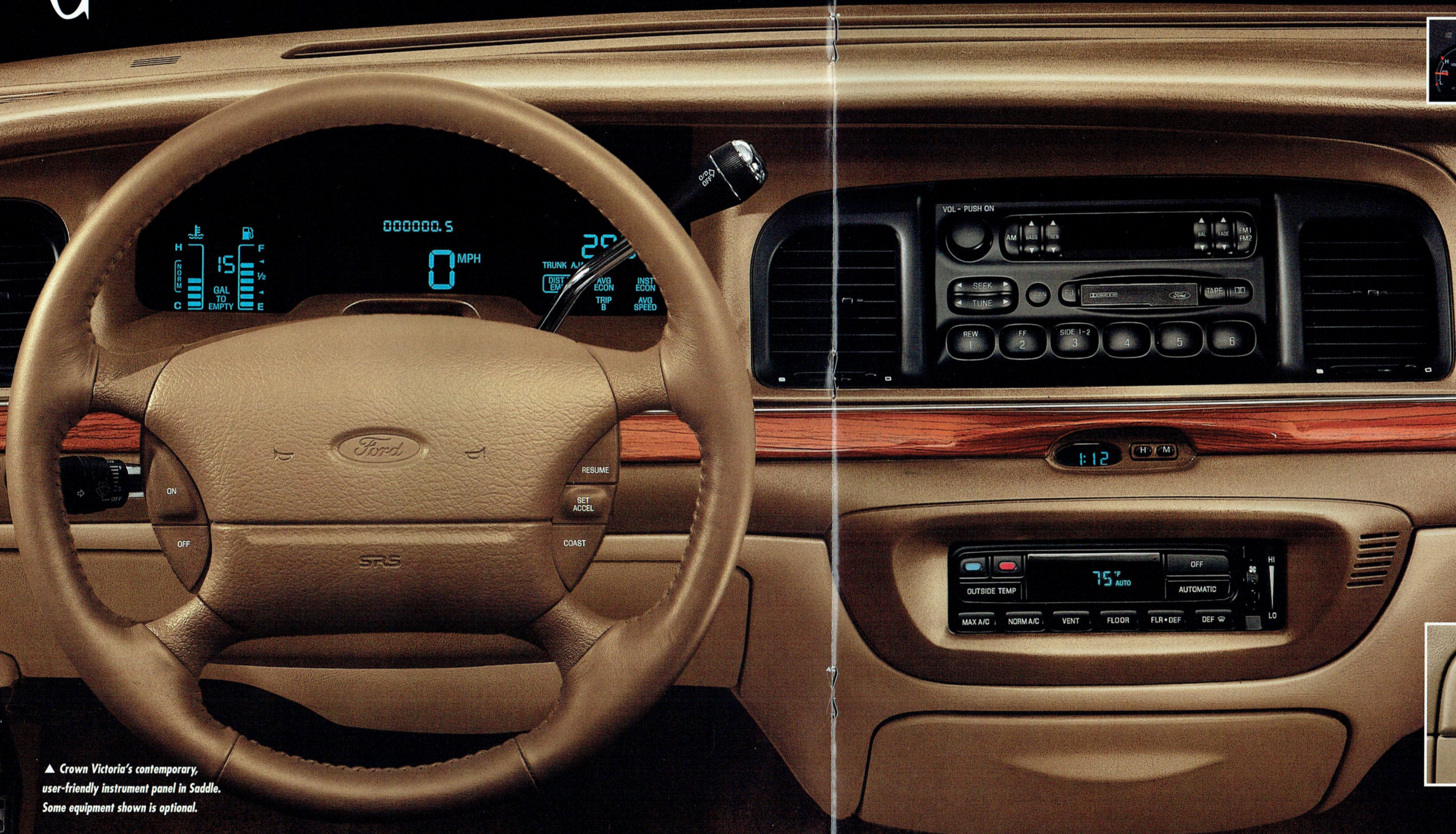


▲ Shoulder belts are adjustable for enhanced comfort.



▲ A tilt wheel is one of a long list of standard features.

Compelling proof that luxury never goes out of style



▲ The analog cluster includes gauges for battery charge, fuel, temperature and oil pressure.



▲ Integrated cup holders are standard on all models.

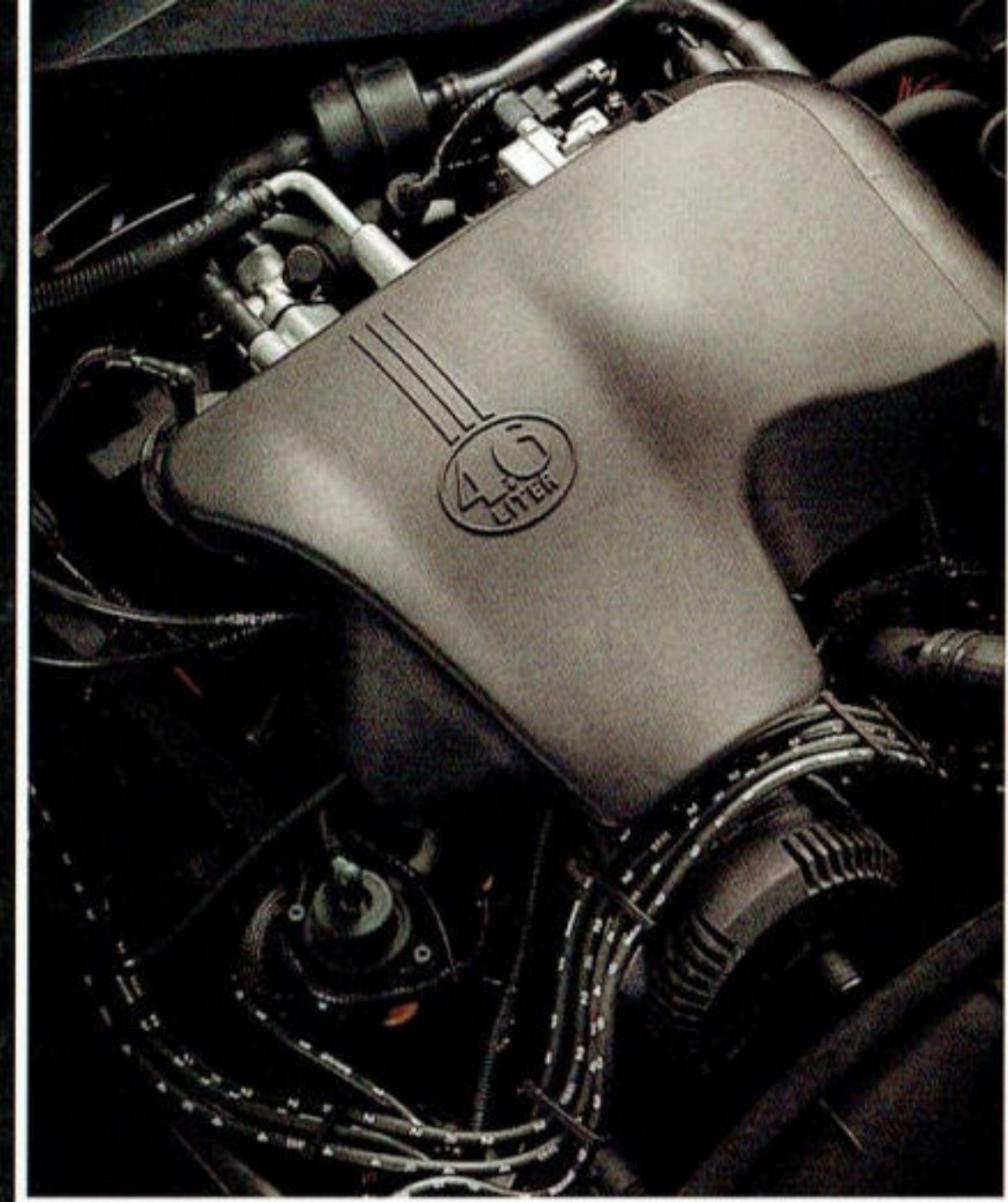


▲ Power door locks are included in all Crown Victoria Preferred Equipment Packages.



▲ The optional power driver's seat adjusts six ways and is standard equipment with LX.

▲ Crown Victoria's contemporary, user-friendly instrument panel in Saddle. Some equipment shown is optional.

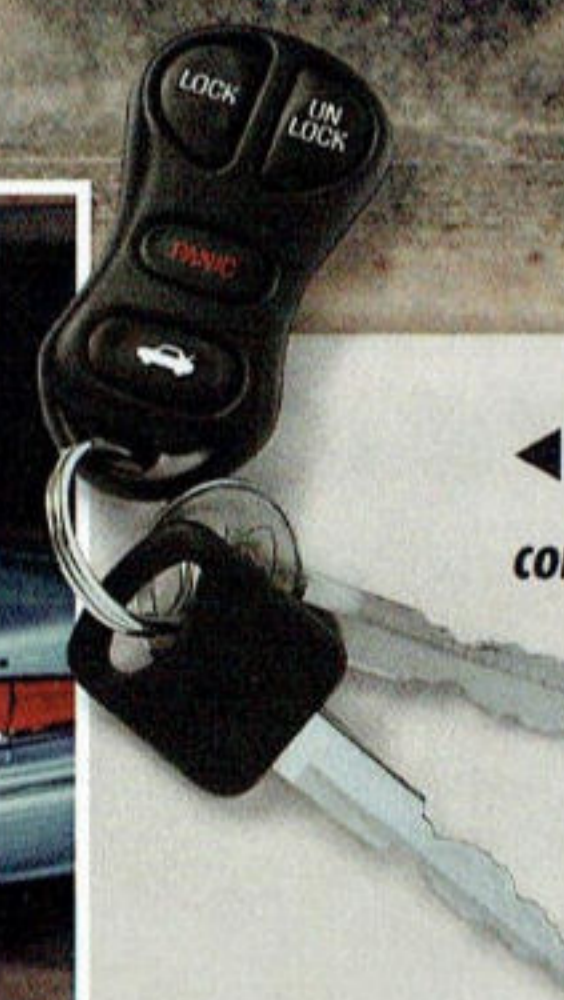
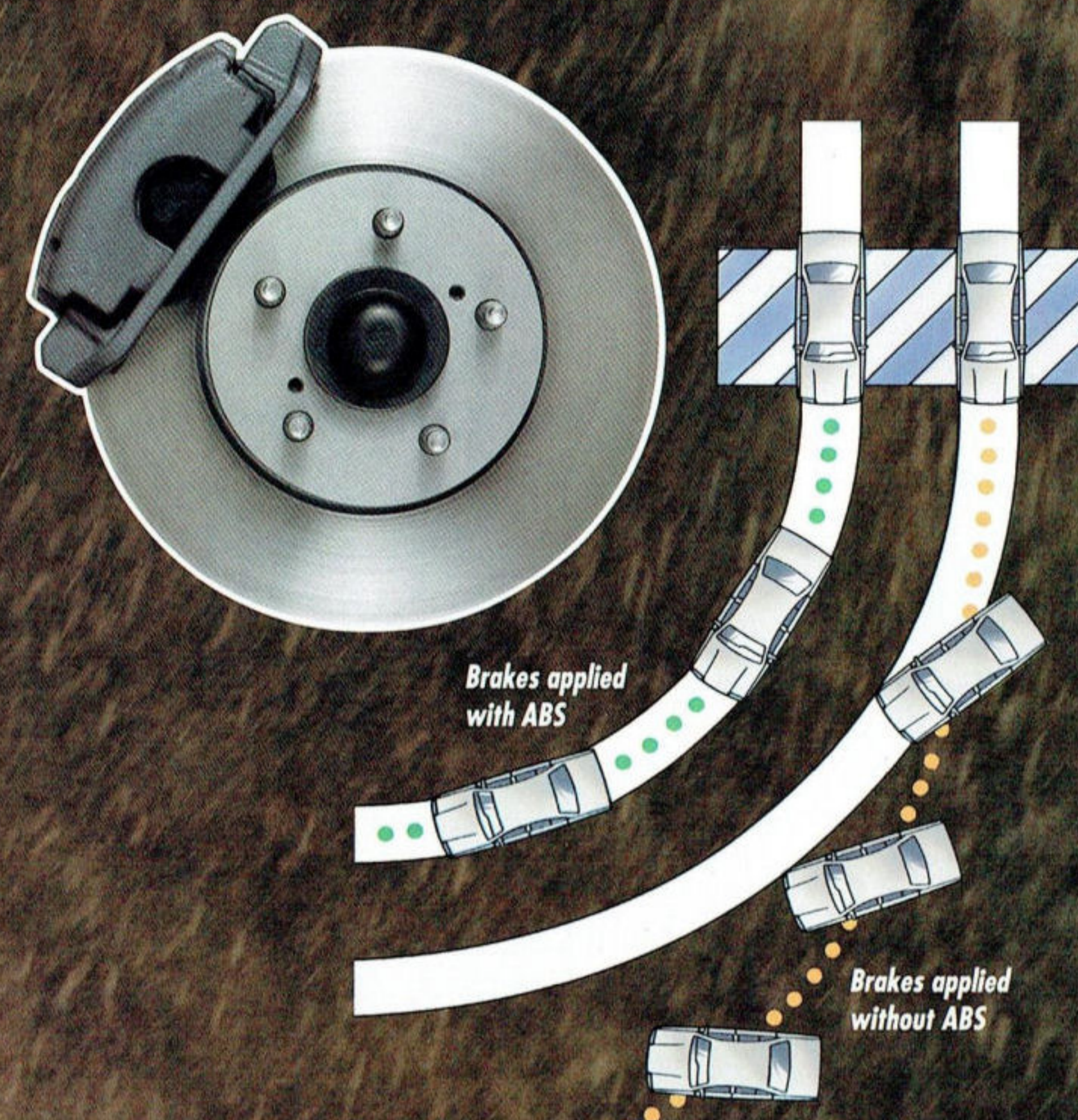


P

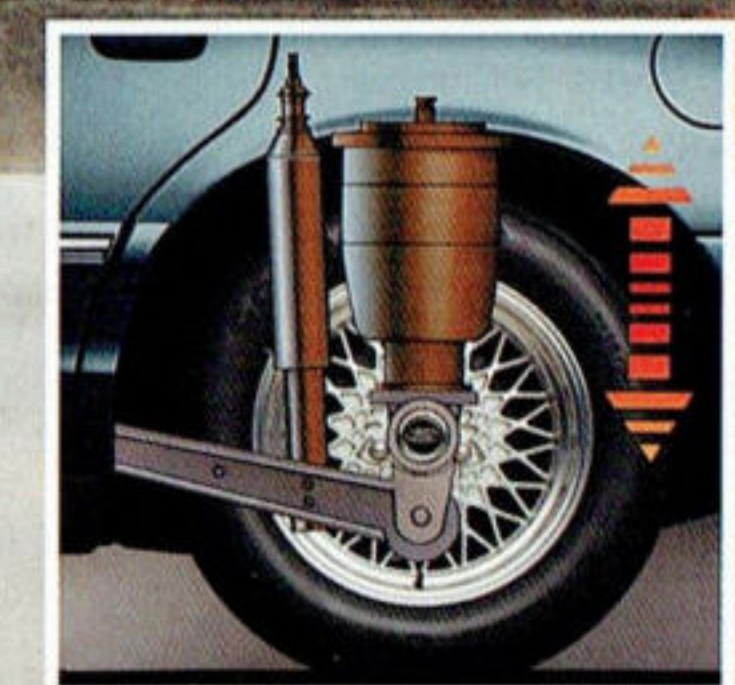
erformance, safety and security

▲ Governed by the sophisticated EEC-V engine control computer, Crown Victoria's powerful V-8 engine is one of the most advanced in its class. And the scheduled tune-up interval is a full 100,000 miles.*
*Under normal driving conditions with regular fluid/filter changes.

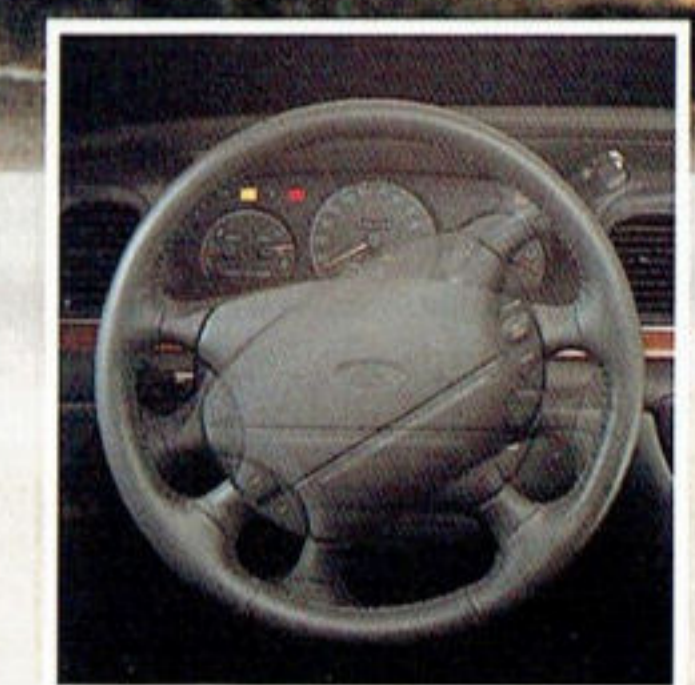
► The sure-footed stopping ability of 4-wheel disc brakes is standard. An anti-lock braking system (ABS) with Electronic Traction Assist is optional. It provides greater steering control while braking under most driving conditions, even on wet or slippery surfaces.



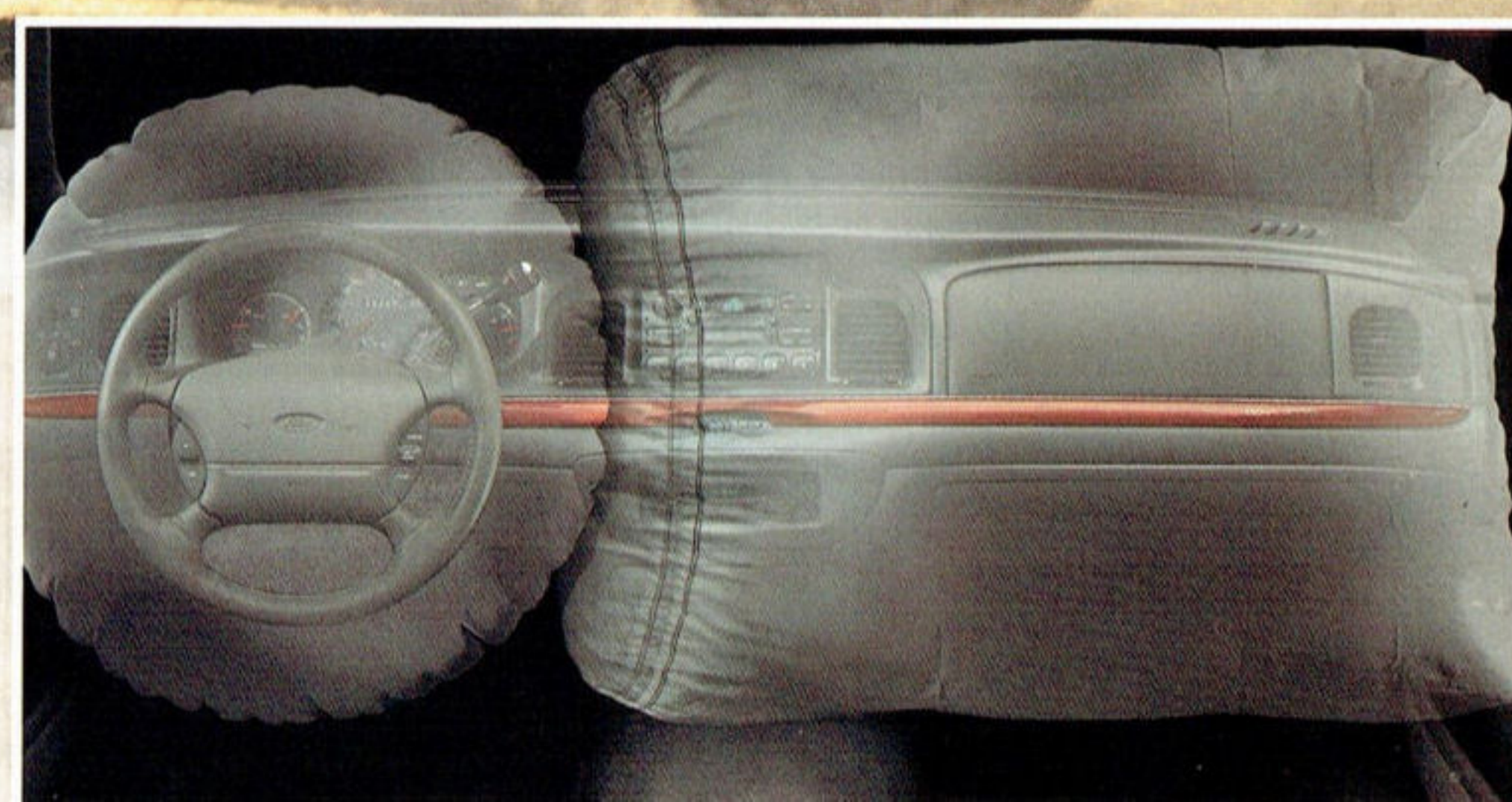
◀ For added security and convenience, Crown Victoria offers the optional remote keyless entry system.



◀ Crown Victoria's exclusive rear air suspension option automatically maintains a constant rear ride height, even at maximum load.



◀ Speed-sensitive steering varies the amount of power assist according to the driving situation.



◀ Supplemental air bags for the driver and the right-front passenger are standard equipment (always wear seat belts).

Preferred equipment packages, features and options



Crown Victoria Preferred Equipment Package 111A

- Power door locks ● Speed control ● Illuminated entry system ● Radial-spoke locking wheel covers ● Spare tire cover ● Front and rear color-keyed, carpeted floor mats



Crown Victoria LX Preferred Equipment Package 113A

- All items in 111A except radial-spoke locking wheel covers ● Electronic AM/FM stereo cassette ● Light/Decor Group ● Leather-wrapped steering wheel ● 12-spoke cast aluminum wheels ● Cornering lamps



Crown Victoria LX Preferred Equipment Package 114A

- All items in 113A ● Electronic temperature control air conditioning ● Anti-lock brakes with Electronic Traction Assist ● High-level audio system ● Electronic instrumentation ● Electronic automatic dimming rearview mirror ● Rear air suspension ● Remote keyless entry system ● Dual 6-way power seats ● Programmable driver memory seat

Left to right: deluxe wheel covers (standard); locking radial-spoke wheel covers (package 111A); optional cast aluminum wheels; 12-spoke cast aluminum wheels (included in LX Preferred Equipment Packages); and 16" cast aluminum wheels (included in the Handling and Performance Package).



	Crown Victoria 111A	LX 113A	LX 114A
EXTERIOR			
Full solar-tinted glass	S	S	S
Dual heated electric remote-control mirrors	S	S	S
Clearcoat paint (anti-chip primer in selected areas)	S	S	S
Deluxe wheel covers	S	S	S
Cast aluminum wheels	-	O	O
White sidewall tires	O	O	O

	Crown Victoria 111A	LX 113A	LX 114A
SAFETY AND SECURITY			
Driver and right-front passenger supplemental air bags	S	S	S
Child safety locks on rear doors	S	S	S
Brake shift interlock that prevents shifting out of the "P" (Park) position until the brake pedal is depressed	S	S	S
Remote keyless entry system (includes 2 controllers)	-	O	P

	Crown Victoria 111A	LX 113A	LX 114A
SEATING			
Reclining cloth split bench seats with dual center fold-down armrests and a full 10" seat track travel	S	-	-
Luxury cloth upholstery with 6-way power driver's seat (10" travel), and driver power lumbar adjustment	-	S	S
Rear bench with fold-down center armrest	S	S	S
6-way power driver seat	O	S	S
6-way power driver and passenger seats (with power recliners and power driver lumbar support)	-	O	P
Driver memory seat (programmable)	-	O	P
Leather seating surfaces (with driver and front passenger power recliners and lumbar support for driver)	-	O	O

	Crown Victoria 111A	LX 113A	LX 114A
COMFORT AND CONVENIENCE			
CFC-free air conditioning	S	S	S
CFC-free air conditioning/electronic temp. control	-	O	P
Tilt steering wheel; interval windshield wipers	S	S	S
Power windows with "express-down" for driver	S	S	S
Autolamp system	S	S	S
Rear window defroster (includes hidden antenna)	S	S	S
12-volt power point	S	S	S
Light/Decor Group: illuminated visor vanity mirrors; dual beam dome/map light; dual bodyside paint stripes; driver's cloth-covered secondary visor	O	P	P
Deep-well trunk with luxury trim	S	S	S
Luxury sound insulation package	S	S	S

	Crown Victoria 111A	LX 113A	LX 114A
SOUND SYSTEMS			
Electronic AM/FM stereo radio with four speakers	S	S	S
AM/FM stereo radio with cassette tape player	O	P	P
High-level audio system with six speakers, seek/scan and self-diagnostic capability	-	O	P

	Crown Victoria 111A	LX 113A	LX 114A
FUNCTIONAL			
Stainless steel exhaust system	S	S	S
Battery saver	S	S	S
Anti-lock brake system/Electronic Traction Assist	O	O	P
Rear air suspension	-	O	P
Handling and performance package	O	O	O

Note: Package content is subject to change.
P = Package feature S = Standard O = Optional



Light Saddle Clearcoat Metallic
S



Med. Wedgewood Blue Clearcoat
Metallic PB, GR, OW



Iris Frost Clearcoat Metallic
GR, OW



Ivory Clearcoat
WG



Toreador Red Clearcoat Metallic
S, C, GR, OW



Silver Frost Clearcoat Metallic
PB, C, GR, OW



Med. Willow Green Clearcoat
Metallic S, WG, GR, OW



Black Clearcoat
S, GR, OW



Light Willow Green Clearcoat
Metallic WG



Vibrant White Clearcoat
PB, S, WG, C, GR, OW

Interior trim colors:

PB = Portofino Blue S = Saddle WG = Willow Green
C = Cordovan GR = Graphite
OW = Oxford White/Light Graphite

Specifications

Engine

Type	V-8
Valves	16, SOHC
Displacement	4.6L (281 cu. in.)
Horsepower (SAE net)	190 @ 4,250 rpm*
Torque (SAE net lbs./ft.)	265 @ 3,250 rpm*
Scheduled tune-up interval	100,000 miles
Fuel system	Sequential multi-port electronic fuel injection

Transmission

Type	Electronic 4-speed automatic overdrive with overdrive lockout
------	---

Body/Chassis

Drivetrain type	Rear-wheel drive
Construction	Body-on-frame
Suspension	Coil springs, stabilizer bars, nitrogen gas-pressurized hydraulic shocks
Steering	Variable power-assist, speed-sensitive
Brakes	Power 4-wheel disc
Tires	P215/70R15 BSW all-season
Fuel capacity	20.0 gallons

*210 hp @ 4,250 rpm w/dual exhausts. †275 lbs./ft. @ 3,250 rpm w/dual exhausts.

A word about engines: Minor differences exist between engines produced at different Ford Motor Company plants.

Ownership experience

ROADSIDE ASSISTANCE PROGRAM

Every new Ford includes the assurance of a no-cost, 24-hour emergency Roadside Assistance Program provided during the 3-year/36,000-mile bumper-to-bumper warranty. Ask your dealer for complete details on this program which includes such services as fuel delivery, tire change, jump start, or even help when you're locked out of your car.



Ford Credit offers a wide variety of financing and leasing programs to qualified buyers which can be arranged right at the dealership. Ask your dealer for the facts.



Optional Ford Extended Service Plans go beyond the basic 3-year/36,000-mile warranty. Ask your

dealer for complete details on the optional plans and for a copy of the limited warranty.

RESPONSIVE TO THE NEED FOR A CLEANER ENVIRONMENT

All Ford vehicles are manufactured with a concern for environmental impact. An environmentally responsible natural-gas-powered Crown Victoria is also available. Your dealer has details.

DEALER-INSTALLED ACCESSORIES

Your Ford Dealer offers a variety of quality Ford-brand accessories that meet or exceed our strict specifications.

PRODUCT CHANGES AND OPTIONS AVAILABILITY

Following publication of the catalog, certain changes in standard equipment, options, prices and the like, or product delays, may have occurred which would not be included in these pages. Your Ford Dealer is your best source for up-to-date information.

Ford Division reserves the right to change product specifications at any time without incurring obligations.

Options shown or described are available at extra cost and may be offered only in combination with other options or subject to additional ordering requirements or limitations.



362-Ann. Litho in U.S.A. 8/95

Printed on recycled paper
10% post-consumer waste

