



The
FORD Cars
are the Stars
of the Show.

THE FAMOUS FORD

This little Booklet is not intended to take the place of a Catalog but merely to show and describe briefly our original ideas for 1905 incorporated in

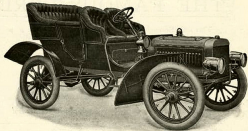
The Ford Motor Cars

We shall be glad to send our complete catalog to those interested in Ford Automobiles : : :

FORD MOTOR CO.,

DETROIT, MICH.

The Car of Satisfaction



FORD MODEL B.

SPECIFICATIONS OF MODEL B

PRICE—\$2,500 F. O. B. Detroit.

WEIGHT—1,500 pounds.

POWER—Ford four cylinder, 20 horse power gasoline motor.

WHEEL BASE—92 inches.

TREAD—33½ inches.

WHEELS—32 inch wood artillery.

TIRES—3½ inch clincher double tube.

MILEAGE CAPACITY ONE FILLING GASOLINE—At least 200 miles.

MILEAGE CAPACITY ONE FILLING OIL—At least 100 miles.

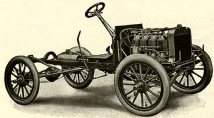
CAPACITY—Gasoline tank 15 gallons.

MAXIMUM SPEED—At least 40 miles per hour.

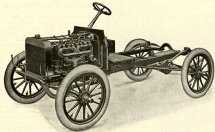
COLOR—Rich dark green, yellow running gear.

UPHOLSTERING—Black, of best leather, handsomely tufted.

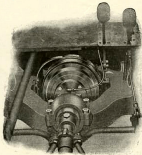
EQUIPMENT—2 side oil lamps, tube, horn and necessary tools.



FORD MODEL B, CHASSIS.



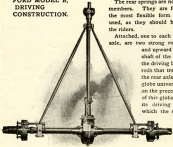
FORD MODEL B, CHASSIS.



**FORD MODEL B TRANSMISSION
AND GLOBE DRIVING JOINT**

The universal globe joint is a very large globe of steel, its ample bearing surface giving great strength, and its well babitted and sized bearings insuring freedom from wear. The housing of this globe is firmly fastened to a portion of the main frame. In the interior of the globe is a rolling device having a square hole for the admission of the square end of the driving shaft of the speed controller. This square shaft end does not slide in any way. The rolling mechanism inside the ball connects directly with the main bevel gear driving shaft, which runs to the rear axle incased throughout its length in a rigid tube running from the universal globe to the differential gear housing on the rear axle. The entire mechanism of universal globe, drive shaft and bevel gears is automatically oiled by a tube from the main oil reservoir.

**FORD MODEL B,
DRIVING
CONSTRUCTION.**



The rear springs are not used in any sense as driving members. They are full elliptic in shape which is the most flexible form of spring known and they are used, as they should be, simply as springs to ease the riders.

Attached, one to each of the outer ends of the rear axle, are two strong rods running diagonally inward and upward to the point where the driving shaft of the speed controller engages with the driving bevel gear shaft. It is these two rods that transmit the driving power from the rear axle to the frame through a large globe universal joint shown and described on the preceding page. The construction of this globe joint allows the rear axle and its driving rods to assume any position which the most uneven road may give it, and yet to transmit surely and fully its driving power without causing the dangerous strains to springs or frame hitherto so common.



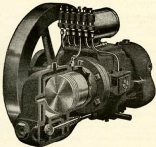
FORD MODEL C, WITH TONNEAU.

SPECIFICATIONS OF MODEL C

PRICE—Runabout, \$380; Torneza car, \$400; both F. O. B. Detroit.
MOTOR—Ford two cylinder, horizontal opposed.
POWER—Ten brake horse power.
WEIGHT OF CAR—1,250 pounds.
WHEEL BASE—71 inches.
TREAD—Standard wagon.
WHEELS—28 inches diameter, artillery pattern.
TIRES—3 inch heavy double tube tires.
MAXIMUM SPEED—40 miles per hour.
CAPACITY GASOLINE TANK—8 gallons.
CAPACITY OIL RESERVOIR—3 pints.
COOLING WATER CAPACITY—3 gallons.
MILEAGE CAPACITY ONE FILLING GASOLINE—200 miles.
MILEAGE CAPACITY ONE FILLING OIL—100 miles.

ACCESSORIES OF MODEL C

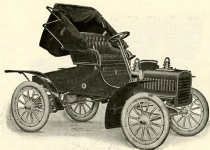
Torneza attachment complete, handsomely furnished, spring back and seats	\$100.00
Leather top, cloth lined, made of high grade leather, complete with side curtains and lights, and storm spoon	50.00
Rubber Top, made of first quality of goods, complete with lined side curtains, side lights and spoon.....	30.00



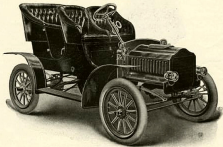
FORD OPPOSED MOTOR, MODEL C.

THE MOTOR is of the water cooled horizontal two cylinder opposed type, giving a maximum amount of power for its size and weight. The cylinder with its water jacket is cast in one piece, thus obviating packed joints so likely to leak. The crank shaft is a steel drop forging with bearing surfaces ground to gauge. The valve cams are hardened and run in oil. The inlet and exhaust valves are of the same size, both mechanically and separately operated. They are easily removable by taking out the threaded plug in the valve chamber and removing the spring seat pin from the valve.

The water cooling system consists of a tank near the motor, a pump on the main shaft outside the motor, and a radiating coil of ample and increased capacity placed in front of the hood.



FORD MODEL C, FOR THE DOCTOR.



FORD MODEL F

FORD—MODEL F

Model F car is equipped with a double opposed motor. Main bearings made of the very best bronze obtainable, and are easily adjusted by loosening one nut from the top of the machine. Valve cams of extra large surface are forged solid, to an extra large size cam shaft which is thoroughly case hardened. Valve feet are forged solid then case hardened and ground to size after hardening. Cam shaft runs in bronze bushings which can be easily removed and replaced at a trifling cost. Crank shaft is drop forged from the very best steel obtainable for the purpose, and is of extra large size, and is accurately ground to size in finishing. Transmission is a cycloidal train, all gears being made from solid drop forgings, and will stand any amount of abuse without breaking. All gears are bushed with fine bronze bushings and run in oil, making this transmission practically indestructible. It has two speeds forward and reverse, all gears being idle on the high speed. Commutator is of the rolling contact type requiring but one wire and can be easily removed for inspection or repairs and contains no moving springs or parts that are liable to wear or become broken. The circulating pump is made of bronze and is of the geared type; all water connections being made of large size copper tubing. The radiator is of ample capacity. The gasoline and water tanks are both located under the front hood with a capacity of nine and four gallons respectively. The oiler is of the automatic sight feed type. The steering gear is of an improved form, double reduction, bevel gear type, connected by ball sockets to the axle; all joints in the steering connections working on hardened steel pins and bronze bushings. Rear axle is of an

improved open spider type with either thirty-six or forty tooth sprocket. Rear axle shaft is of large size running on roller bearings. Model F is equipped with finely upholstered body with a divided front seat and removable side entrance cushions fitted with a single seat across the entire back.

SPECIFICATIONS OF MODEL F

PRICE—\$1,200

WEIGHT—1,400 lbs.

MOTOR—Ford two cylinder horizontal opposed 4 1/2 H.P.

WHEEL BASE—44 inches.

TREAD—Standard wagon.

WHEELS—30 inches.

TIRES—1 1/2 double tube optional.

MAXIMUM SPEED—30 miles an hour.

CAPACITY GASOLINE TANK—8 gallons.

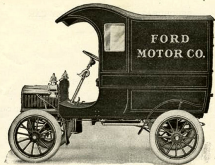
CAPACITY OIL RESERVOIR—3 pints.

COOLING WATER CAPACITY—4 gallons.

COLOR—Rich dark green, yellow running gear.

UPHOLSTERING—Black, of best leather, handsomely tufted.

EQUIPMENT—2 side oil lamps, post horn and necessary tools.



FORD DELIVERY CAR.

SPECIFICATIONS ON DELIVERY CAR

PRICE—\$850 F. O. B. Detroit.

MOTOR—Ford two cylinder horizontal opposed.

POWER—Ten brake horse power.

FRAME—Standard Model C.

WEIGHT OF CAR—1350 lbs.

WHEEL BASE—78 inches.

TREAD—Standard wagon.

WHEELS—28 inch artillery pattern.

TIRES— $3\frac{1}{2}$ inch heavy double tube.

SPEED—A proper ratio of speed will be supplied as desired.

CAPACITY GASOLINE TANK—8 gallons.

CAPACITY OIL RESERVOIR—3 pints.

CAPACITY COOLING TANK—4 gallons.

MILEAGE CAPACITY ONE FILLING GASOLINE ON STANDARD CAR—180 miles.

MILEAGE CAPACITY ONE FILLING OIL ON STANDARD CAR—100 miles.

CARRYING CAPACITY OF BODY—Volume nearly 2 cubic yards.

CARRYING CAPACITY OF BODY—Dimensions average 48 inches long, 40 inches wide and 48 inches high.

CARRYING CAPACITY OF BODY—Weight 600 to 800 lbs. besides driver.

THE FAMOUS FORD

TERMS

All machines shipped F. O. B. Detroit.

All orders must be accompanied by a deposit of 20 per cent. of the full price. The goods will be shipped on sight draft with bill of lading or by Express C. O. D. for the balance due.

All remittances should be made by Exchange on New York, or Express Money Order, or P. O. Money Order.

Orders executed in rotation as received.

Cars sold according to standard guarantee of National Association of Automobile Manufacturers.

For full information and the name of our nearest agent, address The Ford Motor Co., Detroit, Mich.

The Car of Satisfaction

