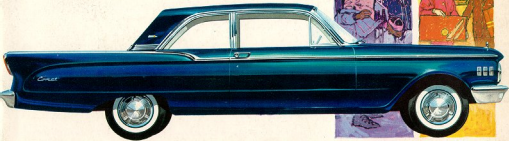


1961 COMET



← FINE-CAR STYLING... BIG-CAR RIDE... SMALL-CAR HANDLING →

the look of success ... the size of success ... the feel of success



Corvair 4-Door Sedan shown in Savan Green Metallic.



Shown in the Ford Candy Metallic.

Going places is lighthearted fun in a family-size Comet, whether it's a short city hop or a cross-country trip. Comet is easy to maneuver in busy traffic . . . a cinch to park. While nearly two feet shorter on the outside than conventional-size cars, there's plenty of stretch-out room on the inside. And Comet's 114-inch wheelbase provides stable, secure handling and a smoother ride. Gleaming exterior is Super-Kramel, the durable finish that will keep your Comet new-looking for years.

COMET

2-DOOR SEDAN

With safe-soft seats and luxury like this, you'd hardly guess Comet is a low-price car. Optional all-wool interior (shown) resists wear and dirt, wipes clean with a damp cloth.



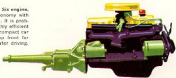


Shown in Regency Turquoise Metallic.

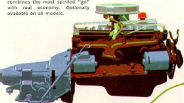
COMET

—THE BETTER COMPACT CAR

Standard Thrift-Power Six engine. Delivers maximum economy with excellent performance. It is probably the most thoroughly efficient ever developed for a compact car — and it's mounted up front for better balance and safer driving.



The new Thrift-Power 170 engine for '61. Developed to bring increased spirited performance to Comet. This easy-to-service engine combines the most spirited "go" with real economy. Optionally available on all models.





Shown in Columbia Blue Metallic

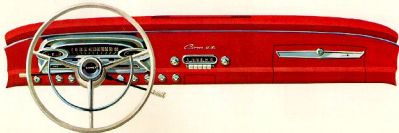


Shown in Signal Red.

COMET'S FINE CAR EXTRAS

MORE VALUE—MORE ECONOMY

Comet—America's first family-size compact with fine-car flair—gives you more value, more of everything for your added convenience and enjoyment. You get genuine economy—many more miles per gallon on regular gas than standard sizes, 4000 miles between oil changes, 10% better tire mileage. Unusually careful attention to detail is found in smart new styling appointments and numerous additional standard features: front armrests, stabilizer bar for improved control and a smoother ride, automatic choke, oil filter, dual sun visors, aluminumized muffler, dual horns, Super-Enamel finish and other features shown here.



PICK YOUR **COMET**...PACK YOUR BAGS...

ENJOY COMPACT-CAR DRIVING AT ITS BEST!

Société du GARAGE TERMINUS
Société Anonyme au Capital de 10 000 000 Fcs
91, Rue du Général Moulin
CAEN - La Maladrerie
Tél. 32-33 P. O. 80 B 11

