

Mercury COMET
Custom

VILLAGER

Station Wagon

Mercury COMET Custom

VILLAGER

... newest, most luxurious six-passenger station wagon



Just picture *your* family in this exciting new star of compact wagons. Simulated mahogany paneling on sides and tailgate adds new elegance to Comet's famous fine-car styling. Inside, too, there's full six-passenger roominess and new fine-car luxury with twist-loop carpeting underfoot and leather-soft pleated vinyl upholstery. Full appointments, too—many luxury features that other compacts charge extra for are standard equipment in the Comet Villager.

Mercury COMET Custom

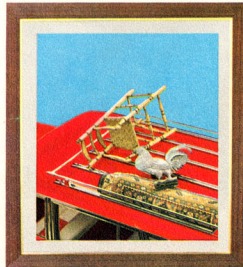
VILLAGER

... newest, most luxurious six-passenger station wagon

Look how beautifully the Comet Villager captures space! Four-door convenience with travelin' room for six, and when you're ready for cargo carrying—over 76 cubic feet of loadspace and a deck length nearly 9 feet long with tailgate down.



Never has there been a more elegant combination of fun and fashion than in this smartest of compact wagons—and at such low cost. In the beautiful, dutiful Villager, you'll set a bright new trend in station wagon living—at work or play, at home or away.



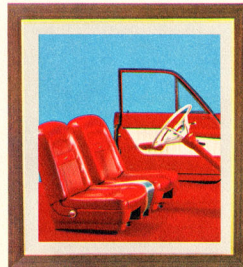
The Villager loves to go places and has a way of showing it. An optional custom-type rooftop luggage rack lets you store extra sports equipment, luggage and gear. Work will never bother a Comet wagon—its unit body-and-frame is built to take it.



You'll praise Comet's low-level tailgate that makes cargo loading so easy. Counterbalancing springs make it seem feather-light in raising or lowering. And the convenience of the Villager's standard, power-assisted, rear window will be welcome every trip.



No other wagon near the Villager's price offers finer interior appointments! Wall-to-wall twist-loop carpeting and vinyl headlining, for example. Dual sun visors; front and rear armrests; cigarette lighter; ash trays; courtesy light—all are standard!



Contoured bucket-type front seats, optionally available in the Villager station wagon, are individually adjustable and deeply foam-padded. Between the seats a convenient bright metal console affords extra storage for your personal belongings.

1962 MERCURYS

best-looking buys...now in each size



COMPACT MERCURY COMET



NEW STANDARD-SIZE MERCURY METEOR



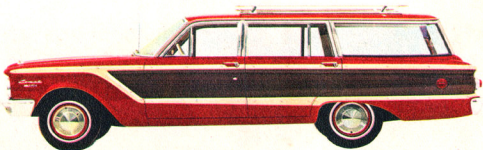
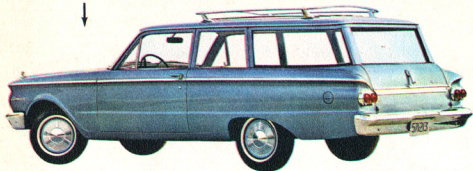
BIG, LUXURIOUS MERCURY MONTEREY

A FULL LINE OF COMET WAGONS



← Mercury Comet Custom 4-door Station Wagon in Champagne. Also available in 2-door model, both with contour front seat, de luxe steering wheel and horn ring, courtesy light, foam-padded seats, all-vinyl upholstery, stainless steel side window molding, side pillar trim and molding above front and rear windows.*

Mercury Comet 2-door Station Wagon in Sea Blue. Comet wagon—living at its lowest cost, offering—as in its 4-door running mate—luxurious upholstery of Bethaney cloth and long-wearing vinyl. And, of course, the roll-down rear window in all Comet wagons does away with the old-fashioned liftgate.*



Mercury Comet Custom 4-door Villager Station Wagon in Carnival Red. With the introduction of this most luxurious of all compact station wagons, Mercury Comet now offers a choice of five handsome wagon models in two series. They're the best-looking buys . . . in the compact size . . . and loaded with extra values!

*Power rear window optional. Roof luggage carrier shown is also optional.

LINCOLN-MERCURY DIVISION . . . 1962 MERCURYS . . . PRODUCTS OF  MOTOR COMPANY, 3000 SCHAEFER ROAD, DEARBORN, MICHIGAN

Specifications shown herein were in effect at the time this book was approved for printing. Lincoln-Mercury Division of Ford Motor Company, Dearborn, Michigan, reserves the right, however, to discontinue or change at any time, specifications, designs, or prices without notice and without incurring any obligations. White sidewall tires, accessories and any other equipment that is not standard equipment are optional at extra cost. Form No. LM62-129 Litho in U.S.A.