



62 MERCURY
MONTEREY

Biggest, most luxurious Mercury. The best-looking buy for the big-car man. **1962 MERCURY MONTEREY**...raises your standard of driving, yet is well within the popular-price range. **BIG-CAR STYLE** that matches the mood of the big-car family—beautiful new styling all around, designed to reflect your good taste. **BIG IN PERFORMANCE** to satisfy your most demanding requirements (choice of 4 engines—“6” or V-8’s). **LAVISH IN LUXURY**—so finely detailed you wonder how the price can

be so modest. **BIG-CAR RIDE**—miracle-smooth with exclusive Cushion-Link suspension, more weight, length and longer (120”) wheelbase than other cars near its price. **COMFORT AND CONVENIENCE** with extra stretch-out room and unqualified 6-passenger size. **BIG IN SAVINGS** with Mercury Monterey’s popular-priced initial cost plus nine self-servicing features* (routine service only twice a year—at 6,000 to 30,000-mile intervals) and efficient operation from every engine.

You'll find Mercury Monterey for '62 your best BIG-CAR VALUE in a choice of 10 magnificent models . . . two superb series.

- **MERCURY MONTEREY CUSTOM SERIES**: convertible, 2-door hardtop, 4-door hardtop, 4-door sedan
- **MERCURY MONTEREY SERIES**: 2-door hardtop, 4-door hardtop, 2-door sedan, 4-door sedan
- **MERCURY MONTEREY STATION WAGONS**: 4-door Colony Park, 4-door Commuter



Monterey Custom 2-door hardtop in Sultana White

*See Pages 16 and 17 for nine of the money-saving, self-servicing features of the '62 Mercury Monterey.

BIG-CAR STYLE

Take a look at the big style leader of the popular-price field . . . literally loaded with extra value. It's the Monterey Custom convertible. See those fleet, fun-to-look-at lines, highlighted by brilliant touches of chrome and stainless steel. Wheel openings, taillights, front grille, rear deck and rocker panels are beautifully highlighted with crisply styled chrome . . . all extra values that make the difference. The massive wraparound bumpers, too, feature triple-plated chrome protection. Out on the road it's a beauty, too. With the top down, the world is your companion. When the weather closes in, then up with the top for sedan snugness. Either way, you travel in real style—with the go-power of a mighty V-8 at your command, and the satin-smoothness of Mercury Monterey's exclusive Cushion-Link ride to cradle you in luxury.



Just press a button to lower the vinyl-coated top, revealing the supreme luxury of Mercury Monterey Custom convertible's space-planned interior. Tasteful bright-metal accents and durable, crush-grain vinyl in a choice of five color combinations give a look and feel of fine-car richness. With top up, plastic rear window zippers open or close with ease. Interior shown (left) in Red and White vinyl.

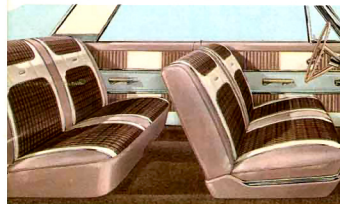


Monterey Custom convertible in Carnival Red

BIG IN PERFORMANCE

In 1962, Monterey offers extra values in style, size and breathtaking performance—priced where you would least expect to find it—below many popular-priced cars that offer much less. First off, there's a wide power-team range that allows you to pick the performance level you like best (three efficient V-8's or Monterey's fuel-saving '6', coupled to your choice of three advanced transmissions). And for all the extra size and solid heft of the Monterey, it rides in superb silence, maneuvers and responds with surprising nimbleness. You'll like everything else about your Monterey; big-car ride with Cushion-Link suspension . . . foam-padded front seat . . . finest coachwork in Mercury history . . . nine self-servicing features that save time and money. Just take the wheel and you'll want to take this Monterey home. Like every '62 Monterey, this Custom 2-door hardtop means more value for the big-car man

Mercury Monterey Custom interiors feature luxurious Corinthian cloth and vinyl combinations, or all-vinyl upholstery, optional at no extra cost. Monterey Custom interior shown in Medium Beige Shadow Weave and Light Beige Pearlescent vinyl.

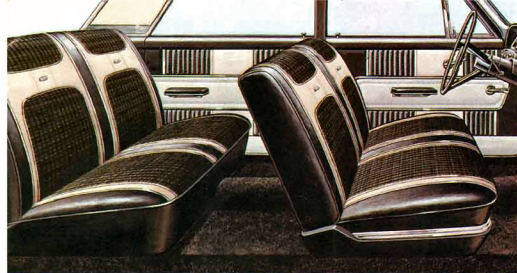


Mercury Monterey Custom 4-door hardtop in Sultana White. Just look this one over—you'll love it. This Mercury Monterey Custom 4-door hardtop combines the ideal in glamour and four-door family convenience. There's a host of standard extras: electric clock, door-operated courtesy lights, electric windshield wipers, back-up lights, Monterey 292 V-8 . . . many others charge extra for them.



Mercury Monterey Custom 2-door hardtop in Desert Frost

**LAVISH
IN LUXURY** Whether you need a big car for your family or prefer the "feel" and comfort of a full-size, handsome car, this Monterey Custom 4-door sedan has your initials on it. High style and luxury surround you—from vinyl headlinings, superbly tailored upholstery and beautifully integrated instrument console to thick carpeting underfoot. In over-all size and style, it is big enough to command the respect usually reserved for the costliest cars. But like every Monterey, this sedan is big in everything but price . . . and with all the extra values that make the difference.



Luxurious color-harmonized Monterey Custom interior shown in White vinyl and Black Shadow Weave cloth.

Monterey Custom 4-door sedan in Presidential Black



SMOOTH

Is the feel of the famous Monterey's ride—deep-cushioned by the greatest combination of bump-smothering features ever built into one car! Monterey ride is just one of the extra values not found on any other car. Put a 1962 Monterey through its paces over the roughest road—you'll experience a ride that's hard to believe. For this car virtually eliminates noise, bumps and jolts. It introduces you to a quiet, velvet-soft riding comfort . . . a new ride sensation that only Monterey for '62 can give you—and the extra-value reasons are:

MERCURY'S EXCLUSIVE CUSHION-LINK SUSPENSION is but one of many engineering miracles that make the Monterey ride so outstanding. Located strategically, as integral parts of both front and rear suspensions, Cushion-Links actually permit the wheels to rebound up and back under impact, and smooth your way over the roughest going. § LONGER, 120-INCH WHEELBASE, extra heft and ideal weight distribution contribute to the cat-like stability and remarkable handling control, as well as the superior ride. § SWEPT-BACK BALL-JOINT FRONT SUSPENSION erases harshness and road shock by easing the front wheels over bumps rather than into them. § REAR SPRINGS, 60 INCHES LONG with 2½-inch wide leaves further cushion the ride, add to passenger comfort. § FULL-CUSHION SHOCK ABSORBERS ride better at all speeds on any kind of road, snub out vibrations before they ever reach you. Add the extra-generous layers of scientifically applied body insulation working with all these features and you can understand why Mercury Monterey's ride is the envy of the industry.



BIG-CAR COMFORT & CONVENIENCE

Here's hardtop fashion at its most convenient, with extra values that make the difference—a wide-open invitation to driving fun that's hard to resist! Full-time Mercury Monterey comfort helps make it that way. You'll find the promise of big interior space generously fulfilled with stretch-out room to spare for half-a-dozen grownups—and a mammoth trunk (30.7 cubic feet) for all their luggage. Four wide doors make it easy for everybody in the family to get in and enjoy the trip. In every way, in fact, this spacious hardtop is designed to complement your needs . . . and is easily available at a price that pampers a modest budget.

Mercury Monterey 2-door hardtop shown in Presidential Black. If ever a car could be called smooth—and prove it—this one can. Just a glance tells you Monterey's smooth style is in a class by itself. A turn at the wheel will convince you of its thoroughbred performance and precise handling. And ride—no car near the money can touch the quiet of Monterey's heavily insulated passenger compartment, or deep comfort assured by Cushion-Link suspension on a long-striding 120-inch wheelbase.



Monterey interior shown in smart Red and White vinyl. Headlinings in every Monterey are handsome patterned vinyl.



Monterey 4-door hardtop in Carnival Red

BIG IN SAVINGS

If you're looking for extra values that make the difference, the '62 Monterey is your kind of car. There's nothing cut down or half-hearted in its big, masculine look. And there's a full measure of interior spaciousness and riding comfort, as well. Consider, too, the money-saving, self-servicing features found on every Monterey. Among them: brakes that stay in adjustment for the life of the linings . . . Super-Enamel finish that keeps new-looking longer . . . new oil filter that lets you go 6,000 miles between oil changes . . . factory-installed long-life, anti-rust, anti-freeze coolant that lasts 2 full years or 30,000 miles, whichever comes first. And for all the fine quality and money saving graces of this big, beautiful Monterey, it can be yours for a surprisingly low price.

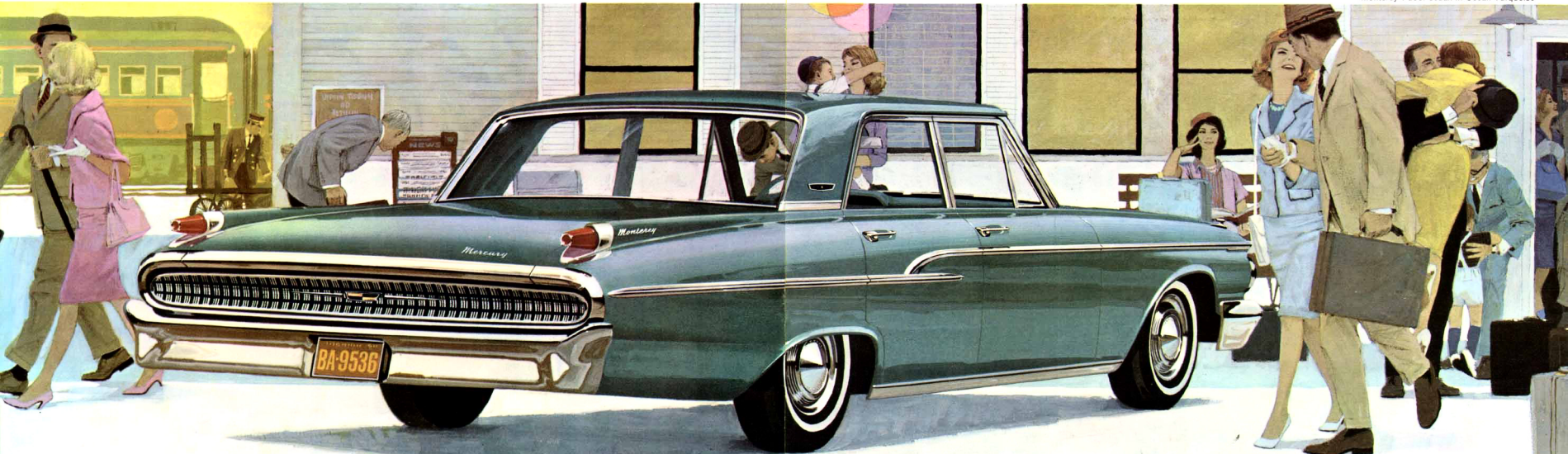
Mercury Monterey 2-door sedan in Desert Frost. This big beauty is the lowest-priced Mercury Monterey of all. Self-servicing features save you time and money, add to the car's long life. The Mercury Monterey "6" squeezes bonus mileage from every tankful of regular gas. Driving is more fun and more dependable, thanks to strict quality standards. You'll find this car has all it takes (and then some!) for you to go places in a big way.



Mercury Monterey interior shown in Medium Turquoise Corinthian cloth and Light and Medium Turquoise Metallic vinyl. Four all-vinyl interiors available at extra cost in Mercury Monterey series.



Monterey 4-door sedan in Ocean Turquoise



EXTRA VALUE BY DESIGN—'62 Mercury Monterey is built to last longer—built to save you money these 9 important ways! **1.** New for '62—Oil goes 6,000 miles between changes—improved full-flow oil filter saves up to 50% on engine oil and filter replacement. **2.** Also new for '62—Anti-rust, anti-freeze coolant lasts two years—or 30,000 miles, whichever comes first—factory-installed, contains ethylene glycol concentrate and improved rust inhibitor. **3.** Major chassis components are pre-lubricated for 30,000 miles—sealed joints keep out dirt and water, save time and money, give freshly lubricated ride all the time. **4.** Muffler life more than doubled—

ruggedly constructed of aluminized steel, lengthens replacement interval. **5.** Brakes adjust themselves mechanically, equally and properly during the life of the linings. **6.** Body protects itself against rust—zinc-coated body sheetmetal and zinc-clad galvanized steel rocker panels resist corrosion two to three times longer. **7.** Spark plugs last longer, save gas—self-cleaning action and bigger size (18-mm.) run cooler, improve combustion and fuel economy. **8.** Finish stays bright—baked-on Super-Enamel keeps it lustrous longer. **9.** Engine costs less to maintain, runs smoother with self-adjusting rocker arms in Mercury Monterey "6".



MERCURY MONTEREY CLOTHS

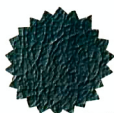
MERCURY MONTEREY VINYL



Black Shadow Weave



Medium Beige Corinthian



Medium Turquoise Metallic



Medium Blue Shadow Weave



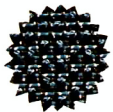
Medium Green Corinthian



Black



Medium Beige Shadow Weave



Medium Turquoise Corinthian



Red



Medium Green Shadow Weave



Black Corinthian



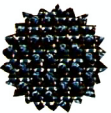
Light Beige Pearlescent



Medium Turquoise Shadow Weave



Medium Blue Metallic



Medium Blue Corinthian



MERCURY MONTEREY FOR 1962

—an invitation to luxurious relaxation on the inside . . . beautifully, durably finished on the outside. The 1962 Mercury Monterey is elegant—brings you distinctive décor coupled with the practical durability you have a right to expect in your new car. Here is quality, luxury, extra value, the likes of which you'll find in no other car near the price. Note the carefully tailored upholstery. Note the subtleness of interior appointments—tasteful touches of chrome . . . choice materials and rich colors. To suit your mood, there's a broad choice of superb upholstery including Corinthian cloth, Shadow Weave cloth and stunning crush-grain vinyls. And whether you prefer your car exterior to contrast or harmonize with the inside color scheme, you can select lustrous, long-lasting Super-Enamel finish from 16 solid or 27 two-tone colors.*

*Optional at extra cost



*Also a Mercury Monterey Metallic Color

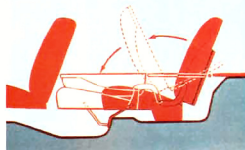
BIG & BEAUTIFUL

... built to pamper passengers or haul huge loads in style! Mercury Monterey Colony Park and Commuter 4-Door Station Wagons. There's plenty you'll like about the new 1962 Monterey station wagons. Each is distinctively styled ... packed with extra values that make the difference ... versatile enough to carry lots of passengers and loads of cargo ... easy to handle on turnpike or parking lot. There's nothing quite like their smooth ride with Mercury's famous, exclusive Cushion-Link suspension. Power is yours—economically—in a choice of Mercury Monterey "6" or three efficient V-8 engines. § Choose the Monterey "wagon" that fits your needs with either 6- or 9*-passenger seating capacity: roll-down rear window (power-operated, standard on Colony Park). There is the ever-popular Commuter (right) with Shadow Weave cloth and vinyl upholstery and thrifty 6-cylinder engine or Mercury Monterey 292 V-8, standard, and the magnificent Colony Park (below) with Corinthian cloth and vinyl or all-vinyl interior, carpeting, and simulated-wood side panels at no extra cost.



Monterey 4-door Commuter station wagon in Carnival Red with optional power-operated rear window

Wide cargo opening simplifies loading and unloading, with big 93.5 cubic-foot cargo capacity. With tailgate open total length is 122.7 inches. Below-deck mounting of spare tire keeps it out of sight yet readily available. Roof luggage carrier, optional.



New sedan-height 2nd seat raises or lowers with the assistance of torsion-bar springs for easy one-hand operation. Fold 2nd seat cushions forward and lower seat-back to floor. In 9-passenger models, with forward-facing 3rd seat down there is nearly 100-inch long rear cargo deck. Third-seat passengers enter easily through wide rear doors.



Monterey 4-door Colony Park station wagon in Presidential Black

*Optional at extra cost.

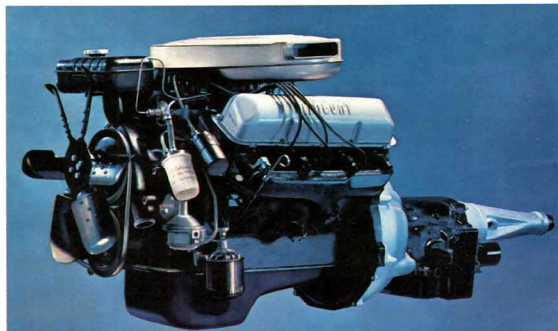
Big performance with big savings—in a big range of Mercury Monterey power teams! Choose your efficiency...economy. performance from a wide selection of quality-built engines and transmissions. Designed to deliver extra value in smooth, dependable performance—a Mercury tradition.

Big performance with big savings—in a big range of Monterey power teams!

Choose your efficiency . . . economy . . . performance from a wide selection of quality-built engines and transmissions, engineered to give you extra value every mile you drive.

Engines—In 1962, Mercury Monterey offers four power plants—an extra-efficient "6" and three thoroughly proved V-8's. Every engine is of advanced, short-stroke design for maximum fuel savings, minimum wear, high performance. Besides the Mercury Monterey "6" and 175-horsepower Monterey 292 V-8, Mercury Monterey offers the Monterey 352 V-8* that goes on regular gas, also. Or if it's peak power you prefer, choose the mighty Monterey 390 V-8** with 300 horsepower and 4-barrel carburetor. Note: Mercury Monterey "6" not available in Commuter or Colony Park station wagon models.

Transmissions—To transfer the thoroughbred power under Monterey's broad hood smoothly requires a transmission both ruggedly constructed and precision-engineered. This great car has it in a choice of three durable, quality-tested transmissions. There's easy-shifting 3-speed manual transmission with a new inhibitor that makes for precise shifting into first or reverse, reduces wear on gears. Or choose Merc-O-Matic*, most economical automatic in the line-up. For the ultimate in effortless driving, nothing does it like Multi-Drive Merc-O-Matic* with dual drive ranges.



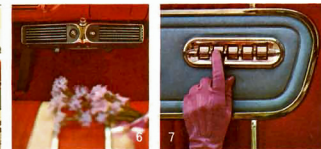
PICK THE POWER TEAM THAT FITS YOUR PERFORMANCE NEEDS

	Standard 3-Speed Manual Transmission	Merc-O-Matic**	Multi-Drive Merc-O-Matic**
Mercury Monterey "6"	+	+	
Mercury Monterey 292 V-8*	+	+	+
Mercury Monterey 352 V-8**	+	+	+
Mercury Monterey 390 V-8**			+

*Mercury Monterey sedans, hardtops and Commuter station wagon available with either "6" or 292 V-8 engines as standard equipment. **Optional at extra cost.

*Optional at extra cost.

For added driving enjoyment, specify these Mercury Monterey options and accessories.



1. Speed and Cruise Control
2. 4-Way Power Seat
3. Power Steering
4. Power-Transfer Rear Axle
5. Transistorized, Push-Button Radio
6. Heater and Air Conditioner
7. Power Windows
8. Power Brakes
9. Windshield Washer

There is plenty of optional equipment to add to this partial listing. See your Mercury dealer to personalize your Monterey to your own driving specifications.

*Optional at extra cost

SPECIFICATIONS

Body Features—High-strength rigidized construction; welded steel with full-width floor panel cross-braces. Full-length roof panel and reinforced double-panel door frames. Laminated safety plate glass windshield. Electric-powered windshield wipers with 15-inch-wiper blades. 2-speed wipers. High-level air intake. 3-spoke safety steering wheel. Exterior finish: Baked Super-Enamel in choice of 16 solid colors and 27 two-tone combinations.* Drop-seat area on Custom models painted in second color. Interiors—Monterey series: Pleated Shadow Weave cloth and crush-grain vinyl. Also, optional four all-vinyl interiors. Monterey Custom series—closed cars—Corinthian cloth and vinyl upholstery. All-vinyl interiors standard on Monterey Custom convertible and optional at no cost in other models. Interiors—station wagon—Commuter—two Shadow Weave and vinyl combinations or four optional all-vinyl. Colony Park—two Corinthian cloth and vinyl and four all-vinyl interiors. Floor covering: All models except Commuter station wagon feature new 20½-

nylon, twisted loop- yarn carpet. Commuter station wagons—vinyl-coated carpet-texture rubber mat.

Power Train—Engines: In-line overhead valve 6-cylinder engine with 1-bbl. carburetor. Overhead valve V-8 engine in three sizes, 292- and 352-cu. in. engines have 2-bbl. carburetors; 300 cu. in. engine has 4-bbl. carburetor. 15-volt electrical system. Full-flow oil filter. Full-pressure lubrication. Self-cleaning 18-mm. spark plugs. Pressurized cross-flow cooling system. Combination water and exhaust-heated intake fuel mixture. Hydraulic valve lifters on 352- and 390-cu. in. engines. Self-adjusting all-steel roller arms on Monterey "6". Solid-shank pistons. Slipper-type pistons on 390-cu. in. engines. Capacities: oil (V-8)*—6 quarts with filter change; (V-8)**—3 quarts with filter change; fuel—20 gallons; coolant (V-8)*—19 quarts (20 with heater); (V-8)**—15 quarts (16 with heater). Multi-Drive Merc-O-Matic Transmission.* Dual drive ranges with 6-position selector lever control. Merc-O-Matic* combination of fluid torque converter and 2-speed planetary gear train. 5-position selector lever. Standard transmission: Selective gear-type with 3 forward speeds, one reverse. Rear axle: 3.56 or 3.89 to 1

with standard transmission. 3.56 to 1 with Merc-O-Matic with 6 cyl., 3.00 or 3.56 to 1 with Merc-O-Matic and Multi-Drive with 6 cyl.

Chassis Features—Full-length ladder-type frame with bowed box-girder side rails. X-type reinforcement for convertible frame. Front suspension: Swept-back ball-joint design. Helical-coil springs. 3-phase hydraulic shock absorbers. Link-type front torsion-bar stabilizer. Cushion-Link suspension, front and rear. Steering: Symmetrical linkage-type with recirculating ball-and-nut type steering gear. Over-all steering ratios—30 to 1 manual; 23 to 1 with power steering. Rear suspension: Sedans with 5-leaf springs. Station wagons with 6-leaf springs. Semi-elliptic leaf-type rear springs—60" long and 2½" wide. Diagonally mounted hydraulic shock absorbers. Hitchless drive. Self-adjusting brakes: self-energizing, hydraulic, 11-inch brake drums, labyrinth double-seal, with integral-cooling ribs. Brake width—29½" (4 r.), 27" front for station wagons). Total brake lining area—212.5 sq. in. (234 sq. in. in station wagon). Tires: Tynex cord tubeless—Sizes: 750 x 14, 800 x 14 standard on station wagons, optional on sedans. *Optional at extra cost. **Optional at extra cost.

Specifications shown herein were in effect at the time this book was approved for printing. Lincoln-Mercury Division of Ford Motor Company, Dearborn, Michigan, reserves the right, however, to discontinue or change at any time, specifications, designs, or prices without notice and without incurring any obligation. While used-well tires, accessories and any other equipment that is not standard equipment are optional at extra cost. The warranties referred to herein are applicable only to products sold in the U.S.A. and in certain neighboring areas.



MERCURY
MONTEREY