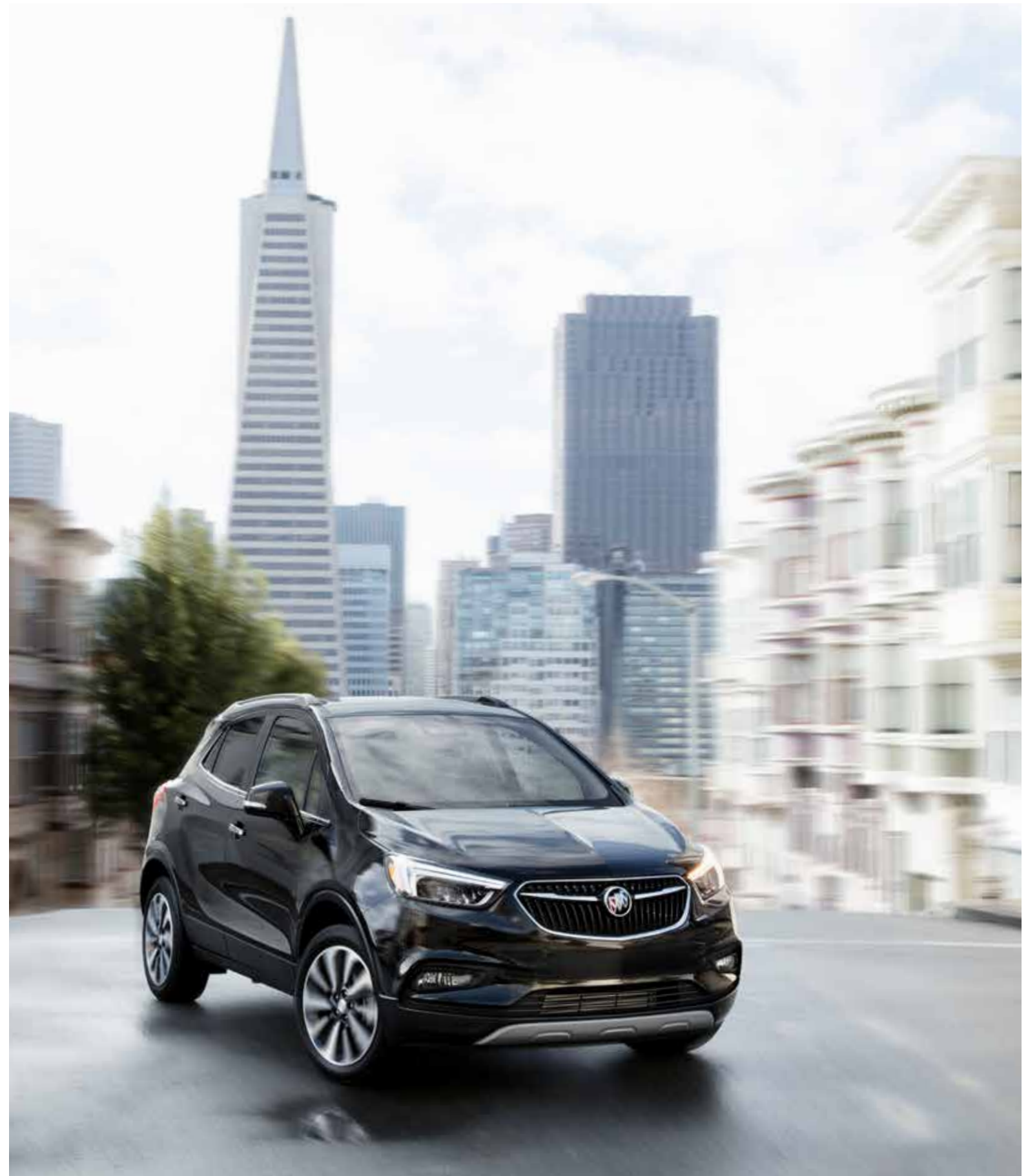


**BUICK**  
BUICK.COM



2019 BUICK **ENCORE**





Encore Essence shown in Ebony Twilight Metallic with available features.

## WHERE LIFE MEETS STYLE

With its nimble maneuverability and turbocharged engine, Encore empowers you to carve your own path. With spacious storage and flexible seating for up to five, Encore gives you what you need to make life look effortless. But what truly distinguishes Encore is a contemporary interior that's complemented with modern technology.

## STYLED TO STAND OUT

Even with the elevated seating position of an SUV, Encore's athletic stance lets you take command of the road, so you feel ready for whatever comes your way. You'll know it's a Buick the instant you catch a glimpse of the signature LED daytime running lamps and winged signature grille. Unique wheels are offered on each trim level.





## AN SUV THAT KNOWS WHAT THE 'S' STANDS FOR

Encore delivers sporty performance with a standard 1.4L turbocharged engine, agile handling and available All-Wheel Drive. The turbo engine gives you power, serving up 138 hp and 148 lb-ft of torque. It's efficient, too, with an EPA-estimated mpg of 25 city/30 hwy (FWD). Encore's nimble maneuverability and tight turning radius help you navigate city streets, crowded freeways or winding back roads confidently.

**ALL-WHEEL DRIVE** To optimize traction, available intelligent All-Wheel Drive constantly monitors all four wheels and transfers power among wheels when needed.

**STABILITRAK** To help you stay confidently in command of the road ahead, the StabiliTrak stability control system applies quick, precise force to the brakes when it senses a difference between the direction of the wheels and the steering wheel.



Encore Essence interior shown in Ebony with Ebony accents and available features.

## DISCOVER WHAT PREMIUM FEELS LIKE

The moment you enter Encore, you'll feel instantly at ease. Sweeping surfaces and spacious seating give the feeling of an airy, welcoming environment—a feeling that's enhanced when you settle into the available leather-appointed seating and discover all of the modern amenities that surround you.

**WARM WELCOME** Opt for the available heated steering wheel and available heated driver and front-passenger seats for soothing warmth on those brisk morning drives.

**8-INCH DIAGONAL COLOR TOUCH-SCREEN** Make hands-free calls, access your favorite SiriusXM<sup>1</sup> Satellite Radio stations during your 3-month trial and after that with a paid subscription and more via the Buick Infotainment System.<sup>2</sup> Plus, get directions and up-to-date traffic information with available built-in Navigation.<sup>3</sup>

**BOSE® PREMIUM AUDIO** Discover what premium sounds like with the available seven-speaker Bose premium audio system with amplifier and HD Radio.

**IN-VEHICLE AIR IONIZER** An available in-vehicle air ionizer helps enhance air quality inside the cabin, while available dual-zone climate controls provide a comfortable driving experience for front passengers.

<sup>1</sup>If you decide to continue service after your trial, your selected subscription plan will automatically renew thereafter. You will be charged at then-current rates. Fees and taxes apply. To cancel, you must call SiriusXM at 1-866-635-2349. See SiriusXM Customer Agreement for complete terms at [siriusxm.com](http://siriusxm.com). All fees and programming subject to change. ©2018 SiriusXM Radio, Inc. All rights reserved. <sup>2</sup>Functionality varies by model. Full functionality requires compatible Bluetooth® and smartphone, and USB connectivity for some devices. <sup>3</sup>Map coverage available in the United States, Puerto Rico and Canada.

Encore Essence interior shown in Shale with Ebony accents and available features.



# ATTENTION TO DETAIL, DETAIL, DETAIL

## QUIETTUNING™ TECHNOLOGY

QuietTuning technology with Active Noise Cancellation uses triple door seals, acoustic laminated glass in the windshield and front side windows, specific suspension tuning and many other measures to help reduce, block and absorb unwanted noise. So you can enjoy conversations with your passengers or quiet time for yourself, as well as fully appreciate the sound from the available Bose premium audio system with seven speakers, amplifier and HD Radio.

**POWER MOONROOF** Treat your passengers to expansive views of the sky with the available power moonroof.

**KEYLESS OPEN AND START** Never fumble for your keys again. With keyless entry, the driver's door unlocks when the keyless fob is in your pocket or purse.



Encore Essence shown in Ebony Twilight Metallic with available features.



## BECAUSE LIFE COMES IN ALL SHAPES AND SIZES

Encore gives you roomy seating for up to five. And thanks to its 60/40 split rear seats and fold-flat front-passenger seat, it also offers you the versatility to carry various combinations of passengers and cargo. So whether you need to seat your friends in surprisingly spacious luxury or load your belongings into the cargo area, Encore easily adapts.

**FLEXIBLE CARGO SPACE** The 60/40 split rear seats fold flat to create up to 48.4 cubic feet of cargo volume.<sup>1</sup> Need to store your smaller valuables? There's an available cargo pullout under the front-passenger seat.

**SECURITY COVER** To protect your possessions, cover your cargo area with the available cargo shade.

**EXTRA-LONG CAPACITY** Need to carry something extra long, like that rug you just picked up for the patio? The front-passenger seat folds flat to accommodate items up to 8 feet long.<sup>1</sup>

<sup>1</sup>Cargo and load capacity limited by weight and distribution.





Encore Essence shown in Ebony Twilight Metallic with available features.



# SAFETY FIRST

Encore helps you stay safe with 10 standard airbags<sup>1</sup> and a suite of available advanced safety technologies.

**REAR VISION CAMERA** To help you better navigate while backing up, the standard Rear Vision Camera shows you grid lines and live images of what's behind you on the 8-inch diagonal infotainment screen.

**FRONT AND REAR PARK ASSIST** When driving less than 5 mph, this available system provides distance-to-object alerts to help you park and avoid colliding with nearby detected objects directly ahead of or behind the vehicle during low-speed maneuvering.

**REAR CROSS TRAFFIC ALERT** When in Reverse, available Rear Cross Traffic Alert provides alerts to help you avoid approaching detected left or right cross traffic, such as when you're backing out of your driveway or a crowded parking space.

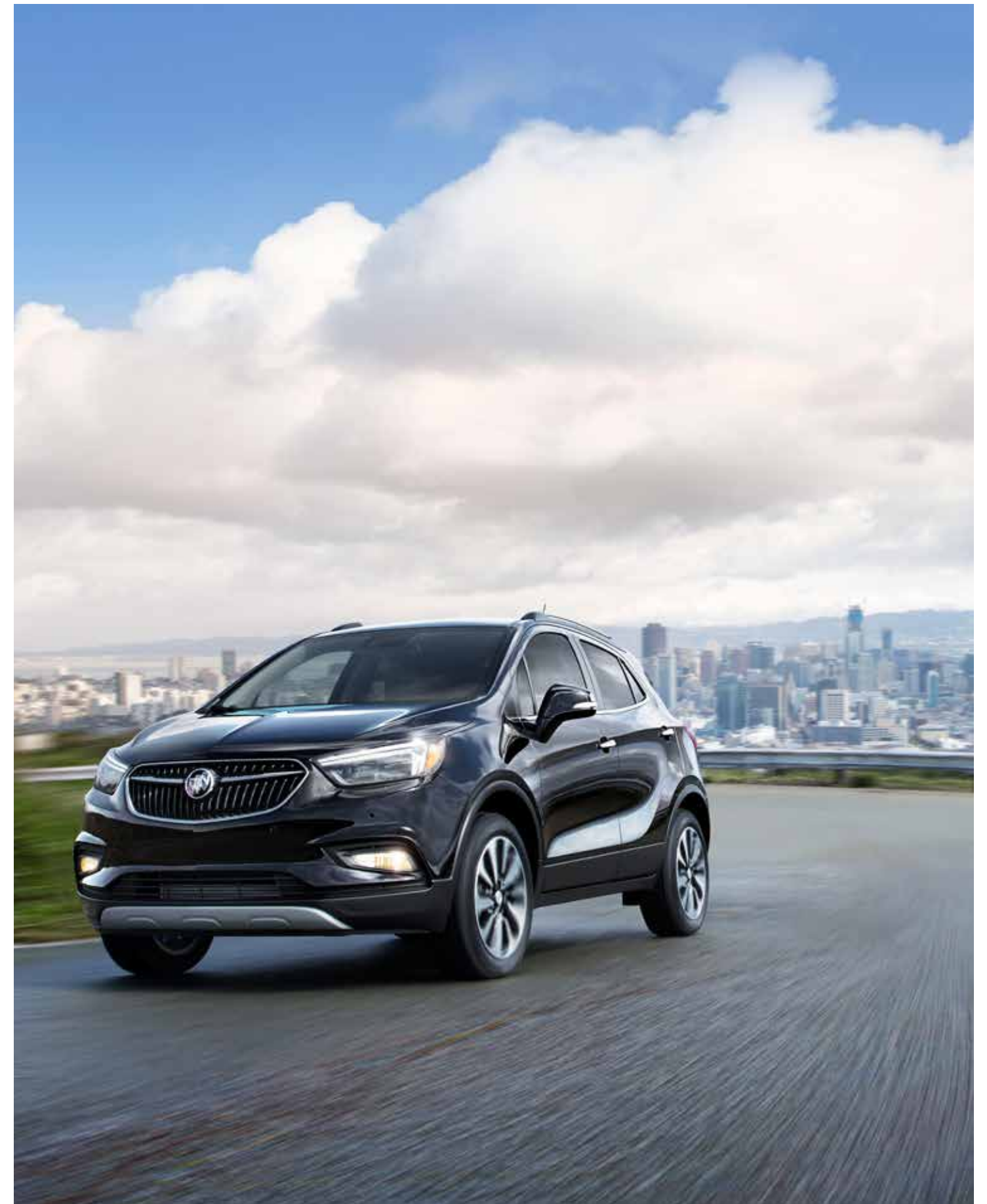
**SIDE BLIND ZONE ALERT** This available system provides side-mirror alerts to help you avoid moving vehicles detected in your side blind zone during a lane-change maneuver.

**LANE DEPARTURE WARNING** This available system provides alerts to help you avoid crashes due to unintentionally drifting out of your lane when your turn signal is not activated.

**FORWARD COLLISION ALERT** If this available system detects that a front-end collision situation is imminent while following a detected vehicle, the system alerts you to a potential crash. It also alerts you if you are following a detected vehicle much too closely.

Safety or driver assistance features are no substitute for the driver's responsibility to operate the vehicle in a safe manner. The driver should remain attentive to traffic, surroundings and road conditions at all times. Visibility, weather and road conditions may affect feature performance. Read the vehicle Owner's Manual for more important feature limitations and information.

<sup>1</sup>A NOTE ON CHILD SAFETY: Always use seat belts and the correct child restraint for your child's age and size, even with airbags. Even in vehicles equipped with the Passenger Sensing System, children are safer when properly secured in a rear seat in the appropriate infant, child or booster seat. Never place a rear-facing infant restraint in the front seat of any vehicle equipped with an active frontal airbag. See your vehicle Owner's Manual and child safety seat instructions for more safety information.



Encore Essence shown in Ebony Twilight Metallic with available features.

# TECHNOLOGY THAT KEEPS YOU CONNECTED

Encore helps keep you seamlessly connected and entertained with its suite of available built-in technologies.

**NEW BUICK CONNECTED SERVICES** With a range of available plans, Buick Connected Services seamlessly links your digital life to your vehicle. Starting with Connected Access,<sup>1</sup> you'll get standard connectivity that enables services in your vehicle. Current services include Vehicle Diagnostics and Buick Smart Driver, which analyze your driving data and give you tips on how to improve your driving habits. Add the Remote Access Plan<sup>2</sup> to start and stop or lock and unlock a properly equipped vehicle via the available myBuick mobile app.<sup>2</sup> You can add a monthly data plan to your account at any time that allows you to stay connected on the go with your available in-vehicle 4G LTE Wi-Fi<sup>3</sup> hotspot.<sup>3</sup>

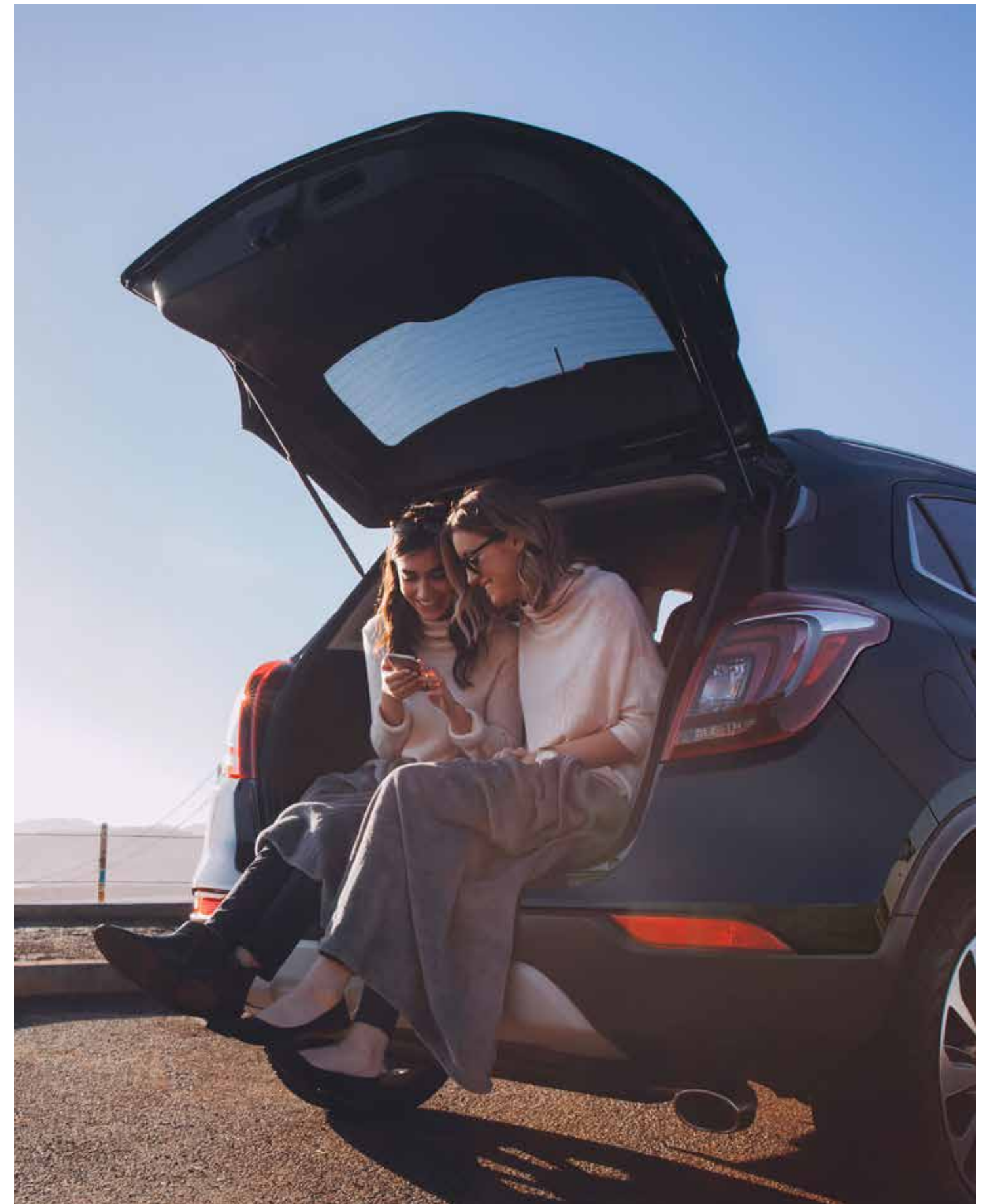
**myBUICK MOBILE APP<sup>2</sup>** Powerful and easy to use, the available myBuick mobile app lets you remotely connect to your vehicle from almost anywhere when you subscribe to Buick Connected Services. When properly equipped, you can unlock and lock your doors, remote-start or -stop your engine and get real-time diagnostics that check your vehicle's fuel status, tire pressure,<sup>4</sup> mileage and more. The myBuick mobile app is also Apple Watch<sup>®</sup>-compatible, so you can locate your Buick,<sup>5</sup> remote-start or -stop the engine, honk the horn and flash the lights and get walking directions to where it's parked—all right from your wrist.

**APPLE CARPLAY<sup>™</sup> COMPATIBILITY<sup>6</sup>** Just plug in your compatible iPhone<sup>®</sup> and you'll have easy access to your contacts, maps and apps that you're familiar with on your vehicle's 8-inch diagonal color touch-screen. You can also have Siri<sup>®</sup> send and read your text messages, and you can listen to all of your content from iTunes,<sup>®</sup> Apple Music<sup>™</sup> and other compatible audio apps.

**ANDROID AUTO<sup>™</sup> COMPATIBILITY<sup>7</sup>** Android Auto makes it easy to use the touch-screen display in your Encore to access your phone, texts and music. And with Google Maps, you can get voice-guided navigation, live traffic information, lane guidance and more while keeping your hands on the wheel and your eyes on the road.

**BUILT-IN WI-FI<sup>®</sup> HOTSPOT<sup>3</sup>** An available built-in Wi-Fi<sup>®</sup> hotspot supports up to seven devices from up to 50 feet away from the vehicle. So your passengers can use their favorite apps to stream movies, watch TV, play games, listen to music and check social media on the go.

<sup>1</sup>Standard connectivity available only to original purchaser for 10 years. See onstar.com for details and further plan limitations. Does not include safety services. Connected Access services are subject to change. <sup>2</sup>Requires compatible Apple<sup>®</sup> or Android<sup>™</sup> device and data connection. Remote services require paid plan. <sup>3</sup>Service varies with conditions and location. Requires active OnStar service and data plan. Data plans provided by AT&T<sup>®</sup>. Vehicle must be on or in accessory position for Wi-Fi<sup>®</sup> to function. <sup>4</sup>Does not monitor spare tire. <sup>5</sup>Service varies with conditions. Available in the U.S. only. <sup>6</sup>Vehicle user interface is a product of Apple<sup>®</sup> and its terms and privacy statements apply. Requires compatible iPhone<sup>®</sup> and data plan rates apply. Apple CarPlay is a trademark of Apple, Inc. Siri, iPhone and iTunes are trademarks of Apple, Inc., registered in the U.S. and other countries. <sup>7</sup>Vehicle user interface is a product of Google<sup>™</sup> and its terms and privacy statements apply. Requires the Android Auto app on Google Play and an Android-compatible smartphone running Android 5.0 Lollipop or higher. Data plan rates apply. Android Auto is a trademark of Google LLC.



Encore Essence shown in Ebony Twilight Metallic with available features.

# ONSTAR SAFETY AND SECURITY

As you travel with the ones you care about most, available OnStar<sup>®1</sup> is with you to empower every moment. With a paid OnStar service plan, you can have a 24/7 lifeline to specially trained Advisors, ready to help if you've been in a crash, your car's been stolen, you're lost or you need Roadside Assistance.<sup>2</sup>

**EMERGENCY HELP WHEN IT MATTERS MOST** Using built-in sensors, available Automatic Crash Response<sup>3</sup> can connect you to an Emergency Medical Dispatch-Certified Advisor<sup>4</sup> immediately after a crash to help get you the care you need, even if you can't ask for it. Using Injury Severity Prediction technology, these specially trained Advisors<sup>4</sup> can notify first responders about the likelihood of serious injury so they can provide help right away. You can feel confident knowing you have a team, 24/7, to get you the assistance you need.

**SECURITY YOU CAN COUNT ON** If your vehicle is stolen, you can be assured OnStar Advisors are ready to take action with available Stolen Vehicle Recovery. Once a vehicle is reported stolen, OnStar Advisors can work with the police to help recover it. They can use GPS technology to pinpoint its location, slow the vehicle if conditions are safe and even prevent it from being restarted. And with available Theft Alarm Notification,<sup>5</sup> if your vehicle alarm sounds, we can let you know via text, email or a phone call. One simple call puts a team into action to help recover your vehicle quickly and safely.

OnStar service plans and Connected Services have changed significantly. While many of the offered services are the same, available plans and pricing are different. Visit [onstar.com](http://onstar.com) to review all the details and limitations.

<sup>1</sup>Visit [onstar.com](http://onstar.com) for coverage map, details and limitations. <sup>2</sup>Roadside service provided by Allstate Roadside Services. <sup>3</sup>OnStar plan, working electrical system, cell service and GPS signal required. OnStar links to emergency services. <sup>4</sup>OnStar Advisors are certified by the International Academies of Emergency Dispatch. <sup>5</sup>Requires armed GM factory-installed theft-deterrent system. Additional texting and data rates apply.



Encore Essence shown in Ebony Twilight Metallic with available features.



Encore Essence shown in Ebony Twilight Metallic with available features.

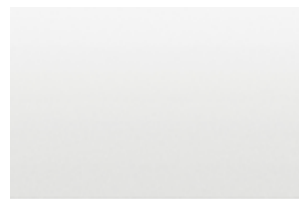
| FEATURES   |              |                |  |         |
|--|--------------|----------------|--|---------|
|  | ENCORE (1SV) | PREFERRED      | SPORT TOURING                                    | ESSENCE |
| ● STANDARD ○ AVAILABLE — NOT AVAILABLE                                     |              |                |  |         |
| 1.4L TURBO ENGINE WITH VARIABLE VALVE TIMING (VVT) AND DOHC                | ●            | ●              | See dealer or buick.com for engine availability. |         |
| 1.4L TURBO ENGINE WITH VVT, SIDI AND STOP/START TECHNOLOGY                 | —            | —              |  |         |
| 60/40 SPLIT-FOLDING REAR SEAT  | ●            | ●              | ●  | ●       |
| HEADLAMPS WITH LED DAYTIME RUNNING LAMPS                                   | ●            | ●              | ●  | ●       |
| 18" ALUMINUM WHEELS  | ●            | ●              | ●  | ●       |
| 10 AIRBAGS <sup>1</sup>  | ●            | ●              | ●  | ●       |
| KEYLESS OPEN AND START   | ●            | ●              | ●  | ●       |
| APPLE CARPLAY™ COMPATIBILITY <sup>2</sup>                                  | ●            | ●              | ●  | ●       |
| ANDROID AUTO™ COMPATIBILITY <sup>3</sup>                                   | ●            | ●              | ●  | ●       |
| BUICK INFOTAINMENT SYSTEM <sup>4</sup> WITH 8" DIAGONAL TOUCH-SCREEN       | ●            | ●              | ●  | ●       |
| 3 MONTHS OF SIRIUSXM <sup>5</sup> SUBSCRIPTION                             | ●            | ●              | ●  | ●       |
| QUIETTUNING™ TECHNOLOGY WITH ACTIVE NOISE CANCELLATION                     | ●            | ●              | ●  | ●       |
| STABILITRAK STABILITY CONTROL SYSTEM                                       | ●            | ●              | ●  | ●       |
| BUILT-IN WI-FI® HOTSPOT <sup>6</sup>                                       | ○            | ○              | ○  | ○       |
| CARGO SHADE  | —            | ●              | ●  | ●       |
| FLOOR MATS, FRONT AND REAR, CARPETED                                       | —            | ●              | ●  | ●       |
| REMOTE START   | —            | ○              | ●  | ●       |
| SIDE BLIND ZONE ALERT AND REAR CROSS TRAFFIC ALERT <sup>7</sup>            | —            | ○ <sup>8</sup> | ○ <sup>8</sup>                                   | ●       |
| ALL-WHEEL DRIVE  | —            | ○              | ○  | ○       |
| MOONROOF, POWER, TILT-SLIDING  | —            | ○              | ○  | ○       |
| FOG LAMPS  | —            | —              | ●  | ●       |
| INSIDE AUTO-DIMMING REARVIEW MIRROR  | —            | —              | ○  | ●       |
| BOSE® AUDIO, 7-SPEAKER SYSTEM WITH AMPLIFIER AND HD RADIO                  | —            | —              | ○  | ○       |
| BUICK INFOTAINMENT SYSTEM <sup>4</sup> WITH NAVIGATION <sup>9</sup>        | —            | —              | ○  | ○       |
| REAR SPORT SPOILER   | —            | —              | ●  | —       |
| LEATHER-APPOINTED SEATING  | —            | —              | —  | ●       |
| HEATED FRONT SEATS   | —            | —              | —  | ●       |
| MEMORY SEAT, DRIVER  | —            | —              | —  | ●       |
| HEATED STEERING WHEEL  | —            | —              | —  | ●       |
| UNIVERSAL HOME REMOTE, INCLUDES GARAGE-DOOR OPENER, 3-CHANNEL PROGRAMMABLE | —            | —              | —  | ●       |

| PACKAGES   |              |           |               |         |
|--|--------------|-----------|---------------|---------|
|  | ENCORE (1SV) | PREFERRED | SPORT TOURING | ESSENCE |
| ● STANDARD ○ AVAILABLE — NOT AVAILABLE   |              |           |               |         |
| SAFETY PACKAGE:<br>Includes Side Blind Zone Alert, <sup>7</sup> Rear Cross Traffic Alert <sup>7</sup> and 120-volt power outlet located at the rear of the center console  | —            | ○         | ○             | ●       |
| SAFETY PACKAGE II:<br>Includes Front and Rear Park Assist, <sup>7</sup> Forward Collision Alert, <sup>7</sup> Lane Departure Warning, <sup>7</sup> In-Vehicle Air Ionizer and Rainsense Wipers   | —            | —         | —             | ○       |
| EXPERIENCE BUICK PACKAGE:<br>Includes easy-to-use Buick Infotainment System <sup>4</sup> with Navigation, <sup>9</sup> tilt-sliding power moonroof and 18" 7-spoke chromed aluminum wheels   | —            | —         | —             | ○       |
| BUICK INTERIOR PROTECTION PACKAGE:<br>Includes the following dealer-installed accessories: first- and second-row color-keyed all-weather floor mats and color-keyed cargo mat (not available with Active Package or Road Trip Package) | —            | ○         | ○             | ○       |
| ACTIVE PACKAGE:<br>Includes the following dealer-installed accessories: cargo-area tray and accessory carrier hitch (not available with Buick Interior Protection Package)   | —            | ○         | ○             | ○       |
| ROAD TRIP PACKAGE:<br>Includes the following dealer-installed accessories: all-weather floor mats and roof-rack crossrails (not available with Buick Interior Protection Package)  | —            | ○         | ○             | ○       |

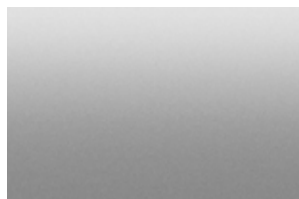
| DIMENSIONS (INCHES)                 |           | CAPACITIES                           |  |
|-------------------------------------|-----------|--------------------------------------|--|
| Wheelbase                           | 100.6     | Engine Type                          | 1.4L Turbo with VVT  |
| Overall length                      | 168.4     | Horsepower                           | 138 hp @ 4900 rpm  |
| Body width                          | 69.9      | Torque                               | 148 lb-ft @ 1850 rpm   |
| Overall height, with luggage rails  | 65.3      | EPA-estimated mpg                    | 25 city/30 hwy (FWD);<br>24 city/29 hwy (AWD)  |
| Minimum ground clearance, front     | 6.2       | Cargo Volume (cu. ft.) <sup>10</sup> | 48.4 behind first-row seats with second-row seats folded<br>18.8 behind second-row seats |
| Head room, first row/second row     | 39.6/38.8 | Seating Capacity                     | 2/3 (front/rear)   |
| Shoulder room, first row/second row | 54.2/52.6 | Fuel Tank (approx.)                  | 14.0 gallons   |
| Hip room, first row/second row      | 51.7/50.1 | Base Curb Weight                     | 3,237 lbs (FWD); 3,358 lbs (AWD)   |
| Leg room, first row/second row      | 40.8/35.8 |                                      |  |

<sup>1</sup>A NOTE ON CHILD SAFETY: Always use seat belts and the correct child restraint for your child's age and size, even with airbags. Even in vehicles equipped with the Passenger Sensing System, children are safer when properly secured in a rear seat in the appropriate infant, child or booster seat. Never place a rear-facing infant restraint in the front seat of any vehicle equipped with an active frontal airbag. See your vehicle Owner's Manual and child safety seat instructions for more safety information. <sup>2</sup>Vehicle user interface is a product of Apple® and its terms and privacy statements apply. Requires compatible iPhone® and data plan rates apply. Apple CarPlay is a trademark of Apple, Inc. Siri, iPhone and iTunes are trademarks of Apple, Inc., registered in the U.S. and other countries. <sup>3</sup>Vehicle user interface is a product of Google™ and its terms and privacy statements apply. Requires the Android Auto app on Google Play and an Android™-compatible smartphone running Android 5.0 Lollipop or higher. Data plan rates apply. Android Auto is a trademark of Google LLC. <sup>4</sup>Functionality varies by model. Full functionality requires compatible Bluetooth® and smartphone, and USB connectivity for some devices. <sup>5</sup>If you decide to continue service after your trial, your selected subscription plan will automatically renew thereafter. You will be charged at then-current rates. Fees and taxes apply. To cancel, you must call SiriusXM at 1-866-635-2349. See SiriusXM Customer Agreement for complete terms at siriusxm.com. All fees and programming subject to change. ©2018 SiriusXM Radio, Inc. All rights reserved. <sup>6</sup>Service varies with conditions and location. Requires active OnStar service and data plan. Data plans provided by AT&T® Visit onstar.com for system limitations. <sup>7</sup>Read the vehicle Owner's Manual for important feature limitations and information. <sup>8</sup>Included and only available with Safety Package. <sup>9</sup>Map coverage available in the United States, Puerto Rico and Canada. <sup>10</sup>Cargo and load capacity limited by weight and distribution.

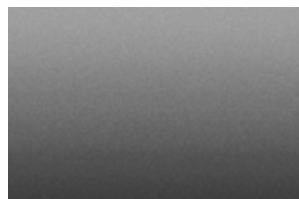
**EXTERIOR COLORS**



Summit White



Quicksilver Metallic<sup>1,2</sup>



Satin Steel Metallic<sup>1</sup>



Winterberry Red Metallic<sup>1,2</sup>



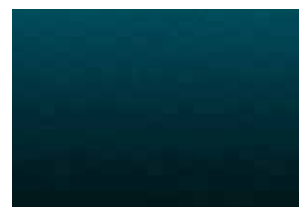
White Frost Tricoat<sup>1,2</sup>



Coppertino Metallic<sup>1,2</sup>



Ebony Twilight Metallic<sup>1</sup>



Deep Azure Metallic<sup>1</sup>

<sup>1</sup>Additional charge, premium paint. <sup>2</sup>Not available on Encore (1SV).

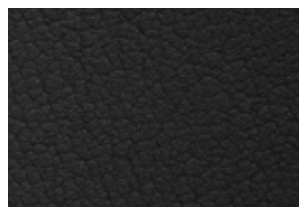
**INTERIOR COLORS**



Shale Cloth With Leatherette<sup>3</sup> or Leather-Appointed Seating<sup>4</sup>



Brandy Leather-Appointed Seating<sup>4,5</sup>



Ebony Cloth With Leatherette<sup>3,6</sup> or Leather-Appointed Seating<sup>4</sup>

Ebony accents included with all interior colors.

<sup>3</sup>Available on Preferred and Sport Touring. <sup>4</sup>Available on Essence. <sup>5</sup>Not available with Quicksilver Metallic or Winterberry Red Metallic. <sup>6</sup>Standard on Encore (1SV).

**WHEELS**



18" 10-Spoke Aluminum With Light Argent Finish Exclusive to Encore (1SV) and Preferred.



18" Midnight Silver Aluminum Alloy Exclusive to Sport Touring.



18" 10-Spoke Aluminum With Technical Gray Finish Exclusive to Essence.



18" 7-Spoke Chromed Aluminum<sup>7</sup> Available on Essence.

<sup>7</sup>Included and only available with the Experience Buick Package.



# IMPORTANT WORDS

We have tried to make this catalog comprehensive and factual. We reserve the right, however, to make changes at any time, without notice, in prices, colors, materials, equipment, specifications, models and availability. Specifications, dimensions, measurements, ratings and other numbers in this catalog and other printed materials provided at the dealership or affixed to vehicles are approximations based on design and engineering drawings, prototypes and laboratory tests. Your vehicle may differ due to variations in manufacture and equipment. Since some information may have been updated since the time of printing, please check with your Buick dealer for complete details. Buick reserves the right to lengthen or shorten the model year for any product for any reason, or to start and end model years at different times. Certain vehicle features may lose their usefulness over time due to obsolescence from technological changes. Unless otherwise noted, all claims based on GM Small SUV segment and latest available competitive information. Excludes other GM vehicles.

**NEW-VEHICLE LIMITED WARRANTY** This warranty is for GM vehicles registered in the USA. See your Buick dealer for terms and conditions.

4 years/50,000 miles (whichever comes first): Bumper-to-Bumper Limited Warranty. The entire vehicle is warranted for repairs, including parts and labor, to correct defects in materials or workmanship. The warranty covers towing to the nearest Buick dealership, and there is no deductible for warranty repairs during the warranty period. The warranty transfers automatically with vehicle ownership during the warranty period.

6 years/70,000 miles (whichever comes first): Transferable Powertrain Limited Warranty plus Roadside Assistance and Courtesy Transportation.

6 years/100,000 miles (whichever comes first): Body and sheet metal components are warranted against rust-through corrosion.

**AN IMPORTANT NOTE ABOUT ALTERATIONS AND WARRANTIES** Installations or alterations to the original equipment vehicle (or chassis) as distributed by General Motors are not covered by the General Motors New-Vehicle Limited Warranty. The special body company, assembler, equipment installer or upfitter is solely responsible for warranties on the body or equipment and any alterations (or any effect of the alterations) to any of the parts, components, systems or assemblies installed by GM. General Motors is not responsible for the safety or quality of design features, materials or workmanship of any alterations by such suppliers.

**ASSEMBLY** Buick vehicles and their components are assembled or produced by different operating units of General Motors, its subsidiaries or suppliers to GM worldwide. We sometimes find it necessary to produce Buick vehicles with different or differently sourced components than originally scheduled. Since some options

may be unavailable when your vehicle is assembled, we suggest that you verify that your vehicle includes the equipment you ordered or, if there are changes, that they are acceptable to you.

**ENGINES** Buick products are equipped with engines produced by GM Powertrain or other suppliers to GM worldwide. The engines in Buick products may also be used in other GM makes and models.

**TRAILERING AND OFF-ROAD DRIVING INFORMATION** Please go to [buick.com](http://buick.com) and carefully review the vehicle Owner's Manual for important safety information about trailering or off-road driving in your vehicle.

**ONSTAR AND BUICK CONNECTED SERVICES** Connected vehicle services require a paid connected vehicle services plan or trial, connected hardware, vehicle electrical system (including battery), wireless service and GPS satellite signal to be available and operating for features to function properly. OnStar acts as a link to existing emergency service providers. Visit [onstar.com](http://onstar.com) for coverage map, details and system limitations.

**A NOTE ON CHILD SAFETY** Always use seat belts and the correct child restraint for your child's age and size, even with airbags. Even in vehicles equipped with the Passenger Sensing System, children are safer when properly secured in a rear seat in the appropriate infant, child or booster seat. Never place a rear-facing infant restraint in the front seat of any vehicle equipped with an active frontal airbag. See your vehicle Owner's Manual and child safety seat instructions for more safety information.

**FLEET ORDERS** Some standard content may be deleted with fleet orders. See dealer for details.

**GMMOBILITY.COM (1-800-323-9935)** GM Mobility offers financial assistance for eligible adaptive equipment to make automotive travel easier for persons with disabilities or special transportation needs. To learn more about special GM Mobility offers, visit [gmmobility.com](http://gmmobility.com).

GM, the GM logo, Buick, the Buick emblem, OnStar, the OnStar emblem and the slogans, emblems, vehicle model names, vehicle body designs and other marks appearing in this catalog are the trademarks and/or service marks of General Motors, its subsidiaries, affiliates or licensors. Sirius, XM and all related marks and logos are trademarks of SiriusXM Radio, Inc. The Facebook logo is a trademark of Facebook, Inc. The Twitter logo is a trademark of Twitter, Inc. Android, Android Auto, Google Play, YouTube and other marks are trademarks of Google LLC. Apple CarPlay, Siri, iPhone and iTunes are trademarks of Apple, Inc. The Instagram logo is a trademark of Instagram, Inc. ©2018 General Motors. All rights reserved.

To learn more about why Certified Service is the perfect companion for your Encore, visit [mycertifiedservice.com](http://mycertifiedservice.com).