

2019

JETTA



Volkswagen

TO- TAL- -LY



RE- MIX -ED

The 2019 Jetta has been re-designed with everything you want, from looks and style to comfort and substance. Not to mention just the right amount of ambience and edge.



R-Line

The available R-Line trim gives the Jetta a sportier look, from the front grille and rear bumper to the black headliner and two-tone leatherette seating surfaces. Add 17" R-Line alloy wheels and black exterior mirrors, and you're sure to draw a crowd.

LED headlights & Daytime Running Lights

These attractive available projector LED headlights with LED Daytime Running Lights (DRL) bring a nice touch of style.

LED taillights

Sure, they look great, but that's only part of the story. They're also efficient and long-lasting.





10-color customizable interior ambient lighting

Having 10 colors of ambient light is a first for Volkswagen, and this available feature can change the mood inside instantly.



Driver-focused interior

We call it a driver-focused interior. You'll call it the "I can't believe I get all this cool stuff interior." Either way, you'll wish you had a longer commute.

Panoramic sunroof

Nothing like an available power panoramic sunroof that tilts and slides to shine a little natural light on your drive.

Ventilated leather seating surfaces

Available for the front seats, these ventilated surfaces help cool you down when the weather gets warm.

Heated seats

Not only can you stay warm on chilly evenings, but so can your front passenger.

Two-tone V-Tex leatherette seats

Comfort, say hi to style. Available only on the R-Line, these two-tone seats feel like leather and look great too, thanks to Titan Black bolsters and perforated Storm Gray inserts.



BABY GOT



BASS

Innovative technology features help enhance the driving experience without getting in the way. It's tech with a purpose, not just tech for the sake of tech.

b BeatsAudio™

The Jetta is the first Volkswagen in the U.S. ever to offer available BeatsAudio. So prepare your playlist for sound you can feel.

Volkswagen Digital Cockpit

Measuring more than 10", this available screen displays your information digitally in high resolution. You can customize what's displayed, from speed, estimated fuel economy, and travel time to route guidance, assistance systems, and elevation.

VW Car-Net App-Connect*

VW Car-Net App-Connect allows you to connect your compatible smartphone with Apple CarPlay™, Android Auto™, or MirrorLink® to access select apps on the touchscreen display. From streaming music to mobile apps, they can be accessed on the touchscreen.

8" touchscreen navigation

Besides looking great, the available sleek glass display helps make the map more prominent, while dynamic route guidance assists you with turn-by-turn information.



Android Auto shown

Driver personalization

The Jetta can store up to four driver profiles, remembering your personalization preferences for a wide variety of different settings and systems.

Fullscreen navigation view

Available with the VW Digital Cockpit and Discover Media, fullscreen navigation view increases the size of the map so it fills the entire display and becomes even easier to see. After all, you shouldn't get lost trying not to get lost.



FEATURES

- VW Car-Net App-Connect*
- Driver personalization
- 6.5" touchscreen sound system
- Bluetooth® with audio streaming for compatible devices
- USB data port
- Rear View Camera System

A man and a woman are shown from the chest up, sitting in the front seats of a car. They are both smiling and looking towards each other. The man is on the left, wearing a light blue button-down shirt. The woman is on the right, wearing a denim jacket. The background is the interior of the car, including the headrests and windows. The image has a color gradient overlay, transitioning from a teal/blue on the left to a pink/magenta on the right.

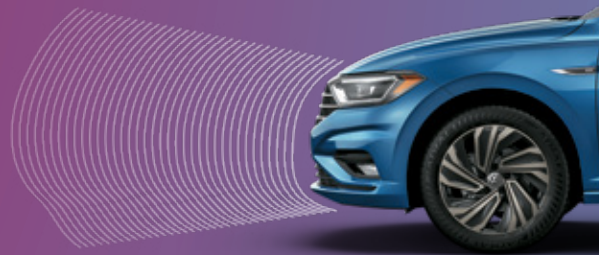
MORE HELP BEHIND THE SCENES

Whether they're helping you stay in your lane or brake more forcefully, the available Driver Assistance features can help give you more confidence on your drive.



High Beam Control (Light Assist)*

Available High Beam Control (Light Assist) helps provide better visibility on dark roads by turning on your high beams at certain speeds. A camera mounted at the base of the rearview mirror turns your high beams on when conditions warrant it on dark or poorly lit roads. It then turns them off again if another car approaches or drives in front of you.



Adaptive Cruise Control (ACC)*

Available Adaptive Cruise Control (ACC) helps maintain a preset distance from the car in front of you. When activated, if the car in front of you speeds up or slows down, the sensors can detect the change and your car follows suit.



Rear Traffic Alert*

The available Rear Traffic Alert comes in handy when you're backing up. It has sensors that can alert you to vehicles crossing in your path when in reverse, and can even help brake the vehicle if needed.



Blind Spot Monitor*

When driving, if you attempt to change lanes, the Blind Spot Monitor can help alert you to cars that may be in your blind spot. The Active Blind Spot Monitor (available when vehicle is equipped with Lane Assist) on select models can also counter-steer within the limits of Lane Assist to help keep you in your lane if you attempt to change lanes when a vehicle is in your blind spot. In addition to the visual warning in the side mirrors, the steering wheel can vibrate.



Lane Keeping System (Lane Assist)*

When moving, the available Lane Keeping System (Lane Assist) can sense if you start to drift into another lane without using the turn signal. Within the limits of the system, Lane Assist can help steer to help keep you in the current lane.



Forward Collision Warning and Autonomous Emergency Braking (Front Assist)*

The available Forward Collision Warning (included in Front Assist) system has a radar sensor in the front to help monitor traffic and can alert you acoustically and visually to a potential front-end collision with the vehicle moving ahead. If it senses that a collision is imminent, Autonomous Emergency Braking (included in Front Assist) can support the driver with increased brake pressure or, if the driver does not react at all, it can apply the brakes automatically.

TURB- WHOA



Our performance standards are simple. Performance comes standard. There's plenty of torque, smooth, confident handling, and lots of old-fashioned fun. All achieved at an EPA-estimated 40 highway miles per gallon.* That's better highway fuel economy than the 2018 Toyota Corolla.**

Turbocharged engine

In the small sedan world, great performance can require an upgrade. Not in the Jetta. Turbocharged exhilaration comes standard.

Cross Differential System XDS®

Available only on the R-Line, this feature can apply braking pressure when needed to the inside front wheel during turns. The result: more accurate cornering.



Driving Mode Selection

With this available feature, you can control your drive. Eco, Normal, Sport, and Custom driving modes each offer a different feel and response. Choose your favorite and take over.

8-speed automatic transmission with Sport mode

This available feature offers eight speeds, which improves performance and efficiency compared to previous generations of Jetta.† In available Tiptronic® mode, you can shift manually and take control of your driving experience.

*30 city/40 highway mpg (2019 Jetta 1.4L, 6-speed manual transmission). EPA estimates. Your mileage will vary and depends on several factors, including your driving habits and vehicle condition. **Based on EPA estimates and manufacturers' data available at the time of publication. Your mileage will vary and depends on several factors including your driving habits and vehicle condition. †30 city/40 highway mpg (2019 Jetta 1.4L, 8-speed automatic transmission). EPA estimates. Your mileage will vary and depends on several factors, including your driving habits and vehicle condition.

HELPS YOU STAY OUT OF TROUBLE

Peace of mind comes in different forms. On the Jetta, it's the multiple safety features as well as the security of America's Best Bumper-to-Bumper Limited Warranty.** No wonder driving one just makes you feel better.



Safety cage

Front and rear crumple zones help absorb crash energy, while a rigid safety cage helps deflect it away from the driver and passengers.

Intelligent Crash Response System (ICRS)^{††}

In the event of a collision that deploys the airbags,[‡] the ICRS can turn off the fuel pump, unlock the doors, and activate the hazard lights. It helps react if you might not be able to.

Automatic Post-Collision Braking System^{††}

Not every collision brings a car to stop. That's why our vehicles include the Automatic Post-Collision Braking System. It can also help slow the vehicle down after a collision, helping reduce the chance of any additional impacts.

Seven stability-enhancing systems

From Electronic Brake-pressure Distribution (EBD), which helps maintain appropriate stopping power during a hard-braking situation, to Electronic Stability Control (ESC), which can adjust engine throttle and apply corrective forces to the wheels that need them most, your vehicle is equipped with a total of seven stability-enhancing systems.



America's Best Bumper-to-Bumper Limited Warranty**

The People First Warranty*

6 Years/72,000 Miles · Transferable
Bumper-to-Bumper · Limited Warranty

Learn more at [vw.com/warranty](https://www.vw.com/warranty).

Cost of ownership

The 6 years or 72,000 miles New Vehicle Limited Warranty reduces the cost of owning a Volkswagen.†

Peace of mind

Every Volkswagen is designed with quality in mind. So our 6 years/72,000 miles (whichever occurs first) New Vehicle Limited Warranty isn't just extensive, it's proof of our confidence.*

Coverage

You're covered by the warranty for 6 years or 72,000 miles (whichever comes first).*

The smart choice

Considering the length of the virtual bumper-to-bumper coverage and the ability to transfer the remainder of the coverage to the next owner, The People First Warranty beats the competition every time.*

Transferable

Your vehicle remains covered even if transferred to a new owner. So long as the vehicle is less than 6 years old and has traveled fewer than 72,000 miles, the remainder of the warranty coverage transfers to the subsequent vehicle owner.*

Bumper-to-Bumper Limited Warranty

In general, the warranty provides practically bumper-to-bumper coverage for repairs to correct a defect in manufacturer's material or workmanship (i.e., mechanical defects).*

Jetta Specs

DAP Available with Driver Assistance Pkg **CWP** Cold Weather Package (Later availability)

● Standard, no additional cost – Not available ○ Optional, additional cost ▲ Later availability

EXTERIOR	S	SE	R-LINE	SEL	SEL PREMIUM
LED headlights with LED Daytime Running Lights (DRL)	●	●	●	–	–
LED projector headlights with LED Daytime Running Lights (DRL)	–	–	–	–	●
LED taillights	●	●	●	●	●
LED license plate lighting	●	●	●	●	●
Foglights with low-speed corner-illuminating feature	–	–	●	–	●
Rear sport valance	–	–	–	–	●
R-Line badging, black grille accents, black painted side mirrors and rear sport valance	–	–	●	–	–
Power-operated side mirrors	●	●	●	●	●
Heated side mirrors	DAP	●	●	●	●
Side mirrors with memory feature	–	–	–	–	●
Power tilting/sliding panoramic sunroof	–	●	●	●	●
Heated windshield washer nozzles	–	CWP/▲	CWP/▲	CWP/▲	●/▲
Heated windshield wiper de-icer	–	CWP/▲	CWP/▲	CWP/▲	●/▲
Rain-sensing windshield wipers	–	–	–	●	●
16" Rama alloy wheels	●	–	–	–	–
16" Rama Black alloy wheels	–	●	–	●	–
17" Trenton alloy wheels	–	–	●	–	–
17" Tornado Metallic alloy wheels	–	–	–	–	●
Automatic headlights	●	●	●	●	●
Coming/Leaving Home feature	●	●	●	●	●

PERFORMANCE	S	SE	R-LINE	SEL	SEL PREMIUM
1.4L TSI [®] , 16-valve, DOHC, in-line 4-cylinder turbocharged engine with direct injection and intercooler; 147 hp, 184 lb-ft of torque	●	●	●	●	●
Driving Mode Selection	–	–	–	●	●
Start-Stop System	○	●	●	●	●
Electromechanical power steering with variable assistance	●	●	●	●	●
XDS [®] Cross Differential System	–	–	●	–	–
6-speed manual transmission	●	–	–	–	–
8-speed automatic transmission with Tiptronic [®] and Sport mode	○	●	●	●	●

INTERIOR	S	SE	R-LINE	SEL	SEL PREMIUM
Manual air-conditioning	●	–	–	–	–
Climatronic [®] dual-zone automatic climate control	–	●	●	●	●
Cruise control	●	●	●	●	●
R-Line steering wheel badge, black headliner, and two-tone seat design	–	–	●	–	–
6-way manually adjustable driver's seat	●	●	●	●	–
6-way power-adjustable driver's seat with memory	–	–	–	–	●
Front seats with power adjustable lumbar support	–	–	–	–	●
Sport bolstered comfort seats	–	–	–	–	●
Heated front seats	–	●	●	●	●
60/40-split folding rear seat	●	–	–	–	–
60/40-split folding rear seat with center armrest	–	●	●	●	●
Heated rear outboard seats	–	CWP/▲	CWP/▲	CWP/▲	●/▲
Cloth seating surfaces	●	–	–	–	–
V-Tex leatherette seating surfaces	–	●	●	●	–
Leather seating surfaces	–	–	–	–	●
10-color customizable interior ambient lighting	–	–	–	●	●
Ventilated front seats	–	–	–	–	●
Remote start	–	CWP/▲	CWP/▲	CWP/▲	●/▲
Auto-dimming interior rearview mirror	–	–	–	●	●
Multi-function steering wheel	●	–	–	–	–
Leather-wrapped multi-function steering wheel	–	●	●	●	●
Heated steering wheel	–	CWP/▲	CWP/▲	CWP/▲	●/▲

TECHNOLOGY & DRIVER ASSISTANCE	S	SE	R-LINE	SEL	SEL PREMIUM
Composition Color touchscreen sound system with 6.5" color display, and AM/FM radio	●	●	●	–	–
Composition Media touchscreen sound system with 8" color display, proximity sensor, MP3/WMA-compatible CD player, AM/FM/HD radio, and voice control	–	–	–	●	–
Discover Media touchscreen navigation system with 8" color display, proximity sensor, AM/FM/HD radio, and voice control	–	–	–	–	●
USB port	●	●	●	–	–
1 front USB data port and 1 USB charging port	–	–	–	●	●
Bluetooth [®] technology with audio streaming for compatible devices	●	●	●	●	●
SiriusXM [®] Satellite Radio with 3-month trial subscription*	–	–	–	●	●
BeatsAudio [®]	–	–	–	●	●
Volkswagen Car-Net [®] App-Connect**	●	●	●	●	●
Volkswagen Car-Net [®] Security & Service with 6-month trial subscription†	–	–	–	●	●
Volkswagen Car-Net [®] Guide & Inform with 3-month SiriusXM [®] Traffic trial subscription and 3-month SiriusXM Travel Link [®] trial subscription*	–	–	–	–	●
Keyless access with push-button start††	–	●	●	●	●
Rear View Camera System	●	●	●	●	●
Blind Spot Monitor‡	DAP	●	●	●	●
Rear Traffic Alert‡	DAP	●	●	●	●
Forward Collision Warning and Autonomous Emergency Braking (Front Assist)‡	DAP	●	●	●	●
Adaptive Cruise Control (ACC)‡	–	–	–	●	●
Multifunction Display (MFD) with trip computer	●	●	●	–	–
Volkswagen Digital Cockpit	–	–	–	●	●
High Beam Control (Light Assist)‡	–	–	–	●	●
Lane Departure Warning (Lane Assist)‡	–	–	–	●	●
Driver personalization	●	●	●	●	●
Electric parking brake	●	●	●	●	●

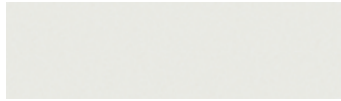
SAFETY	S	SE	R-LINE	SEL	SEL PREMIUM
Crash-optimized front end	●	●	●	●	●
Driver and front passenger, front and side thorax airbag supplemental restraint system††	●	●	●	●	●
Side Curtain Protection [®] head airbags, front and rear††	●	●	●	●	●
Front safety belts, height-adjustable, with pretensioners and load limiters	●	●	●	●	●
LATCH (Lower Anchors and Tethers for CHildren) child seat anchor points	●	●	●	●	●
Electronic Stability Control (ESC), Anti-Slip Regulation (ASR), Electronic Differential Lock (EDL), and Engine Brake Assist (EBA)	●	●	●	●	●
Anti-lock Braking System (ABS), Electronic Brake-pressure Distribution (EBD), and Hydraulic Brake Assist (HBA)	●	●	●	●	●
Intelligent Crash Response System (ICRS)‡	●	●	●	●	●
Tire Pressure Monitoring System (TPMS)	●	●	●	●	●

QUALITY	S	SE	R-LINE	SEL	SEL PREMIUM
6-year/72,000-mile (whichever occurs first) New Vehicle Limited Warranty ^{§§}	●	●	●	●	●
7-year/100,000-mile (whichever occurs first) Limited Warranty Against Corrosion Perforation ^{§§}	●	●	●	●	●
3-year/36,000-mile (whichever occurs first) Roadside Assistance [°]	●	●	●	●	●

DIMENSIONS	
Wheelbase	105.7 inches
Front track	60.7 inches
Rear track	60.4 inches
Length	185.1 inches
Width	70.8 inches
Height	57.4 inches
Ground clearance	5.6 inches

Colors and Wheels

EXTERIOR COLORS



Pure White



White Silver Metallic



Platinum Gray Metallic



Tornado Red



Habanero Orange Metallic



Sage Green Metallic



Silk Blue Metallic



Black



Deep Black Pearl Metallic

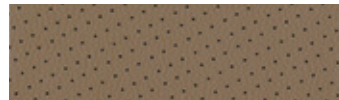
INTERIOR CLOTH



Storm Gray



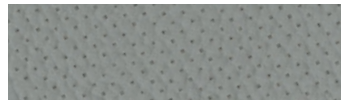
Titan Black



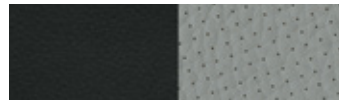
Dark Beige



Titan Black



Storm Gray



Titan Black/Storm Gray

INTERIOR V-TEX LEATHERETTE

WHEELS



16" Rama



16" Rama Black



17" Trenton

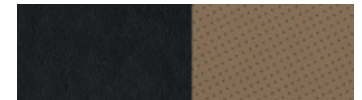


17" Tornado Metallic

INTERIOR LEATHER



Titan Black



Titan Black/Dark Beige



Storm Gray

Not all combinations of exterior paint and interior seating surfaces are available.

*Always pay careful attention to the road, and do not drive while distracted. SiriusXM audio and data services each require a subscription sold separately, or as a package, by Sirius XM Radio Inc. If you decide to continue service after your trial, the subscription plan you choose will automatically renew thereafter and you will be charged according to your chosen payment method at then-current rates. Fees and taxes apply. To cancel, you must call SiriusXM at 1-866-635-2349. See SiriusXM Customer Agreement for complete terms at www.siriusxm.com. All fees and programming subject to change. Sirius, XM, and all related marks and logos are trademarks of SiriusXM Radio Inc. **Always pay careful attention to the road, and do not drive while distracted. Not all features available on all operating systems. Standard text and data usage rates apply. App-Connect features require compatible device, operating system, and mobile apps. See mobile device and app providers for terms and privacy. †Verizon Telematics, Inc., is service provider of VW Car-Net Security & Service. Available on select models. Trial or paid subscription required. VW Car-Net Security & Service services require vehicle cellular connectivity and availability of vehicle GPS signal; certain services may collect location information. See Terms of Service, Privacy Policy, and other details at www.vw.com/carnet. Always pay careful attention to the road, and do not drive while distracted. ††See Owner's Manual for further details and important warnings about the keyless ignition feature. Do not leave vehicle unattended with the engine running, particularly in enclosed spaces. †††Driver Assistance features are not a substitute for attentive driving. Please see Owner's Manual for further details and important limitations. ††††Airbags are supplemental restraints only and will not deploy under all crash circumstances. Always use safety belts and seat children only in the rear, using restraint systems appropriate for their size and age. †††††The Intelligent Crash Response System (ICRS) will only activate in a collision where the airbags deploy or safety belt pretensioners activate. Not all collisions cause airbags to deploy or safety belt pretensioners to activate. ††††††See dealer or owner's literature for limited warranty details. †††††††Roadside Assistance provided by a third party.



Volkswagen

America's Best Bumper-to-Bumper Limited Warranty**

The People First Warranty*

6 Years/72,000 Miles · Transferable Bumper-to-Bumper · Limited Warranty

With The People First Warranty,* Jetta owners get the peace of mind that comes from being covered by America's Best Bumper-to-Bumper Limited Warranty.**



ACCESSORIES†



MojoMats®††



17" Trenton Wheel††



Custom SunShield††



Remote Start (Extended Range Key Fob Shown)††/‡‡

*6 years/72,000 miles (whichever occurs first) New Vehicle Limited Warranty on MY2018 and newer VW vehicles, excluding e-Golf. See owner's literature or dealer for warranty exclusions and limitations. **Claim based on manufacturers' published data on length and transferability of car and SUV Bumper-to-Bumper/Basic warranty only. Not based on other separate warranties. †Genuine Volkswagen Accessories installed by an authorized Volkswagen dealer are covered for the greater of: (1) the accessory limited warranty period (12 months or 12,000 miles, whichever occurs first) from the time of purchase; or (2) the remainder of the New Vehicle Limited Warranty period. Non-genuine Volkswagen Accessories may be covered under separate manufacturer warranties, which can be found at VWAccessoriesWarranty.com. Visit VWAccessoriesWarranty.com or see participating Volkswagen dealer for complete details. ††Proper installation required. Professional installation may be recommended. See owner's literature or dealer for details. ‡See vehicle Owner's Manual for further details and important warnings about the keyless ignition feature. Do not leave vehicle unattended with the engine running, particularly in enclosed spaces.

©2018 Volkswagen Group of America, Inc. Printed in the USA. Volkswagen of America, Inc., believes the information and specifications in this brochure to be correct at the time of printing. Specifications, standard features, options, fabrics, and colors are subject to change without notice. Some features may be unavailable when your vehicle is built. Some vehicles are pictured with options that may be available at extra cost or may not be available on some models. Ask your dealer about the availability of options and verify that the vehicle you ordered includes the equipment you ordered. Tires are supplied and warranted by their manufacturer. "Volkswagen," the Volkswagen logo, "Jetta," "TSI," and "Climatronic" are registered trademarks of Volkswagen AG. "Bluetooth" is a registered trademark of Bluetooth SIG, Inc. "Tiptronic" is a registered trademark of Dr. Ing. h.c. F. Porsche AG. "HomeLink" and the HomeLink house icon are registered trademarks of Gentex Corporation. "MojoMats" is a registered trademark of Volkswagen Group of America, Inc. Volkswagen navigation depends on the signals from the worldwide Global Positioning Satellite network. The vehicle's electrical system, and existing wireless and satellite technologies, must be available and operating properly for the system to function. The system is designed to provide you with suggested routes to location addresses, destinations, and other points of interest. Changes in street names, construction zones, traffic flow, points of interest, and other road system changes are beyond the control of Volkswagen of America, Inc. Complete detailed mapping of lanes, roads, streets, toll roads, highways, etc., is not possible, therefore you may encounter discrepancies between the mapping and your actual location. Please rely on your individual judgment in determining whether or not to follow a suggested navigation route. Periodically, the mapping is updated and a new DVD will be required in order to maintain the latest navigation information available to us. These will be available for purchase from time to time at additional cost. For further information regarding any Volkswagen model, please call 1-800-DRIVE-VW or just look us up at vw.com. VW19JETSBUS

BETTA GETTA JETTA



Re-engineered. Re-designed. And practically re-invented.
Introducing the 2019 Jetta.