

MARK VI
1982
LINCOLN
TOWN CAR

Presenting the unmistakable Mark VI for 1982.

Here is a beautiful merging of superb styling and sophisticated technology. Acclaimed for its elegance. Commanding attention. The unmistakable Mark VI for 1982. It begins with Mark's bold grille;

continues with its elegant profile and the distinctive rear deck tire mount treatment; and is completed by Mark's unique oval opera windows. Each element in perfect proportion. Achieving immediate recognition. Regarded as unmistakable Mark VI elegance.

This elegance continues as you open the door to Mark's spacious interior. Richly appointed, with a myriad of luxury touches, like Twin Comfort Lounge seats, rich cut-pile carpeting, full-length front-door armrests with convenient power controls, power vent windows, and luxury tilt-steering

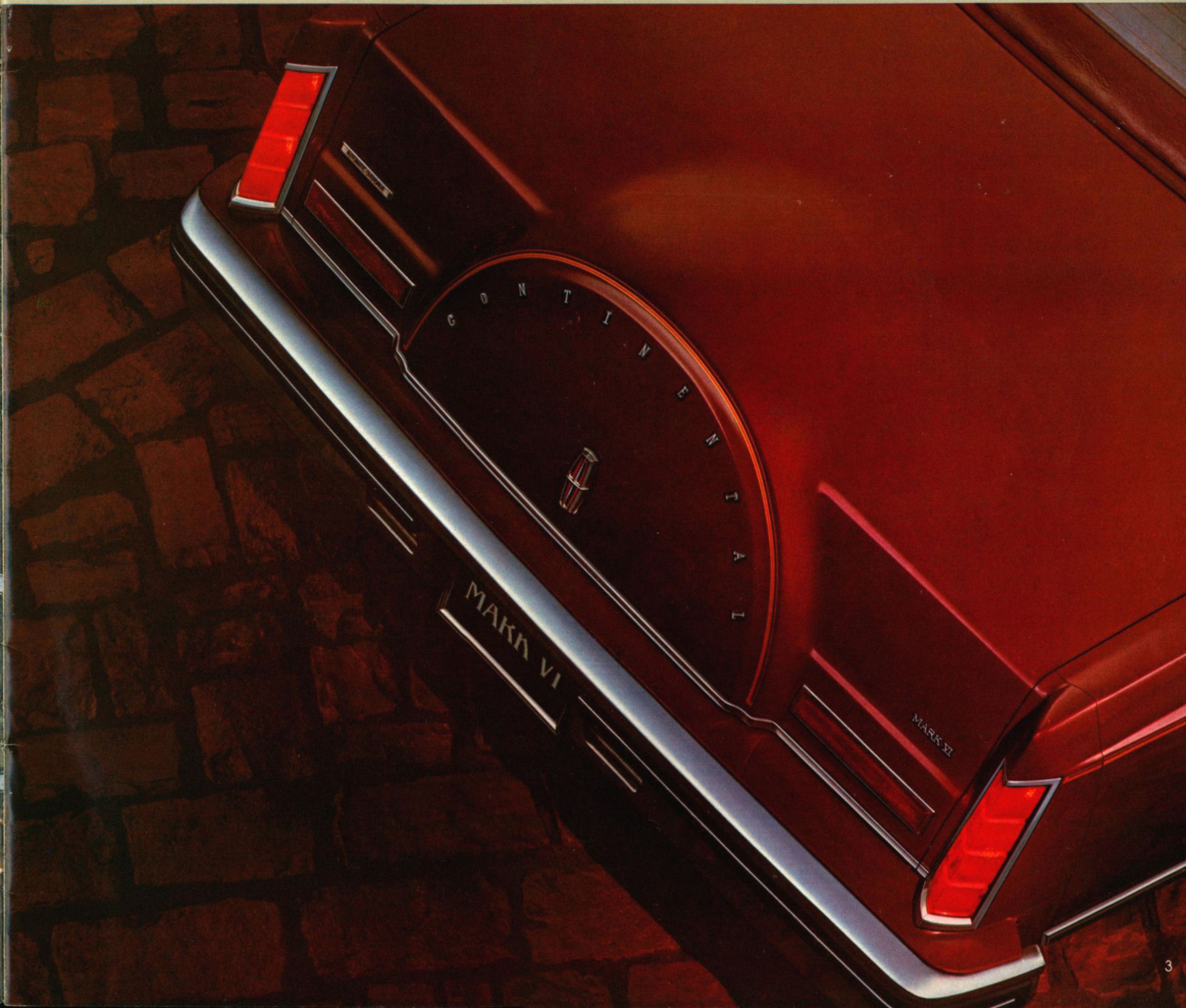
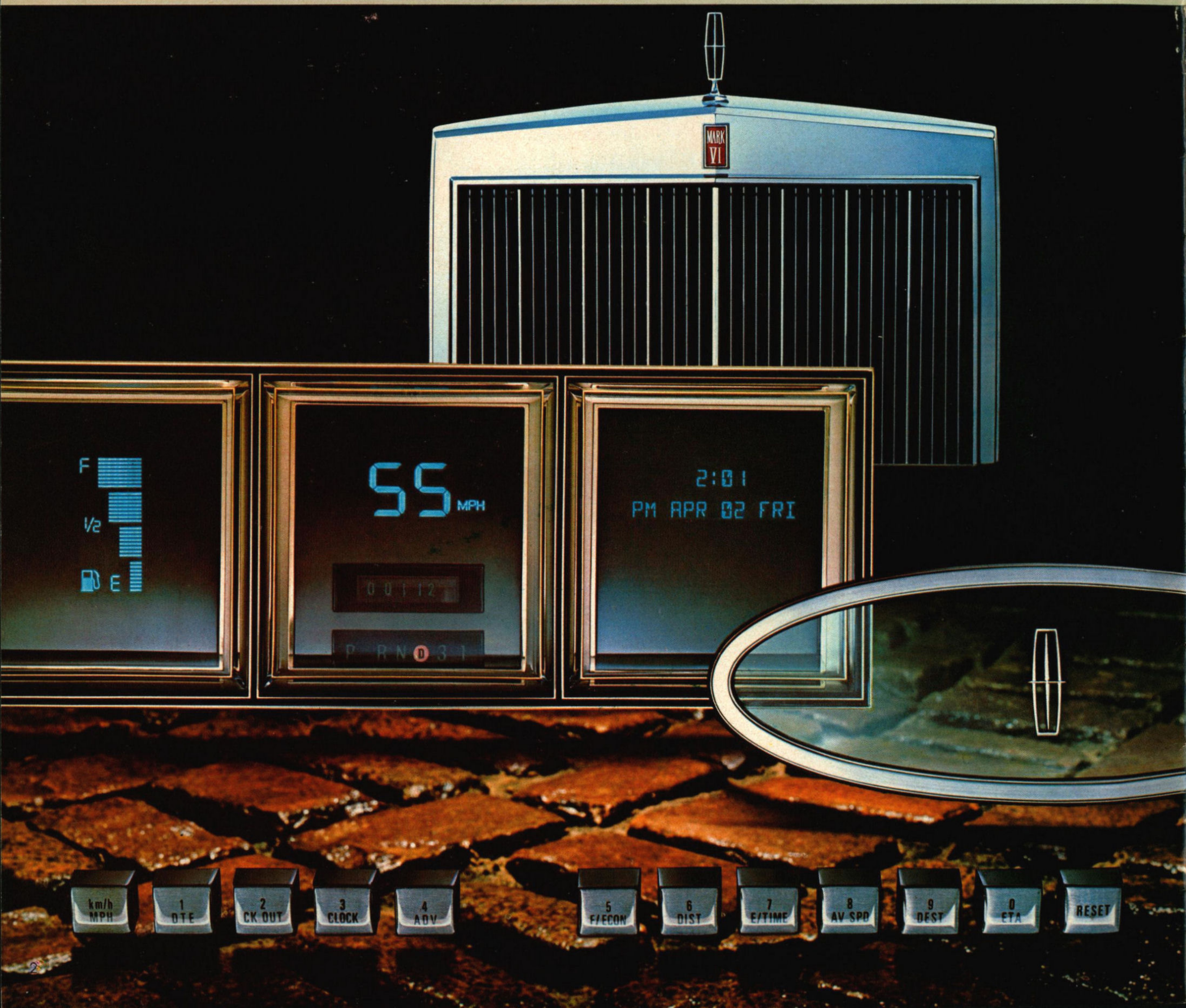
wheel with speed control. All here to satisfy your need for uncompromising luxury. You'll discover that Mark's high-fashion styling is beautifully balanced by its sophisticated technology. Technology evident in Mark's Electronic Instrument Panel with

Message Centre. This technological marvel provides you with such valuable information as the time, travel data, and fuel economy. Advanced technology is further evident in Mark's standard 5.0 litre (302 CID) engine with dual exhaust contributing to Mark's overall

performance. The engine is teamed with an innovative Automatic Overdrive Transmission that automatically engages at about 65 kph (40 mph) to reduce engine revolutions and fuel consumption. When you drive the Mark VI, you'll experience its superbly smooth ride.

Isolating you from the harsh realities of the road. And providing a world of quiet, uninterrupted elegance. For added reassurance, Mark VI also incorporates a computerized Self-Diagnostic System to make servicing faster and more efficient. Now select the Mark VI of your choice:

a distinctive Designer Mark, a personalized Signature Series, or an elegant Mark VI, two-door or four-door. Mark VI. Your unmistakable choice for 1982.



PUCCI

Polished European elegance... understated and unmistakable.

In any language, the name Emilio Pucci stands for exceptional elegance befitting Mark's sleek, four-door silhouette. Touched now with Pucci's impeccable sense of taste. Achieving an overall effect of polished European elegance. Elegance worthy of admiration.

Pucci selects Pastel French Vanilla over French Vanilla Metallic. Understated luxury, topped by a Pastel French Vanilla specialty roof in Bayville textured vinyl. Note the definition of deep Dark Brown with Gold accent stripes gracing the

bodyside. Complemented by a Dark Brown pinstripe on Mark's distinctive decklid. Completed by the prestigious Pucci logo. And further polished with his choice of turbine spoke aluminum wheels.

Here is a level of luxury to excite the senses. To satisfy your desire for high-fashion styling and your demand for sophisticated technology. Evident in Mark's ride, in its commanding performance, and in its overall commitment to consistent quality.

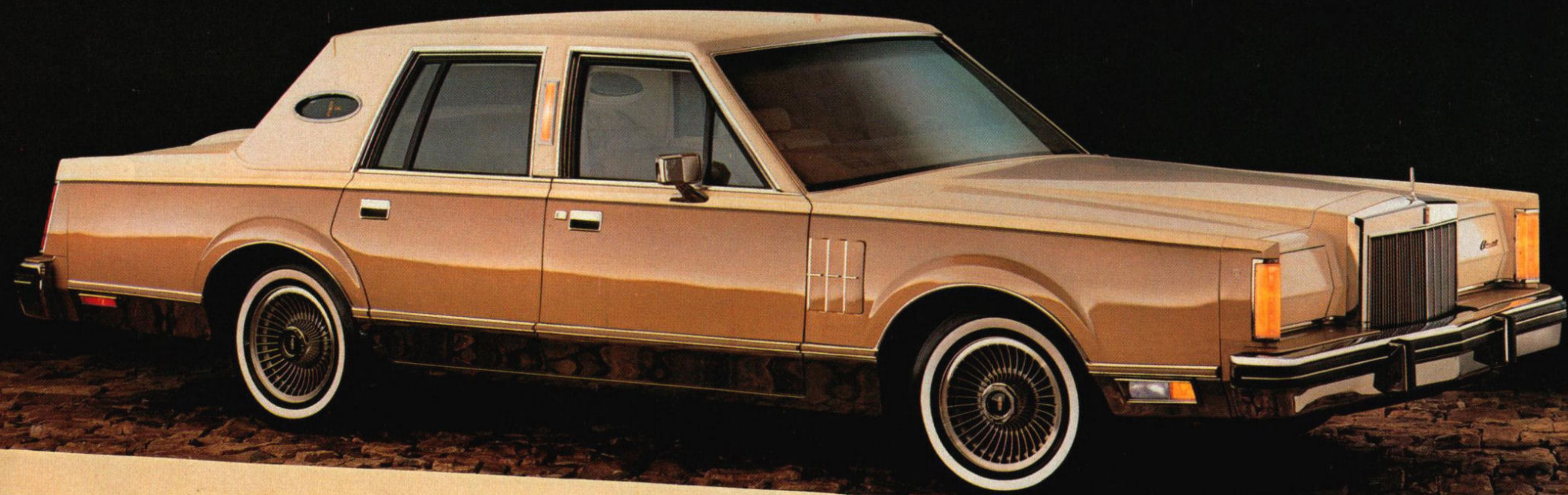
The Pucci Designer Series Mark VI. Unmistakable elegance for 1982.

Tasteful, irresistible interior luxury.

For his interior, Pucci has selected the richness of Vanilla to create a mood of rarefied refinement.

Pucci begins with his choice of soft Vanilla-coloured leather seating with vinyl trim. Front seat passengers relax in Twin Comfort Lounge seats. With six-way power for the driver and passenger and dual recliners, adjusting easily for your precise driving pleasure. And fold-down armrests—front and rear—add to the total enjoyment of your passengers as they appreciate all the aesthetics of this finely appointed automobile. Four-door roominess abounds here. Gracious space enhanced by Pucci's choice of Vanilla-coloured Allure carpeting, the luxury tilt-steering wheel is colour-keyed to complement this world of quiet elegance. Elegance that's signed with the prestigious Pucci logo on the rich-looking Rosewood Woodgrain instrument panel.

Now you can enjoy the richness of Mark VI and the refinement of Emilio Pucci. Together. Creating a rare choice for 1982.



The 1982 Pucci Designer Series Mark VI four-door, with Pastel French Vanilla specialty roof in Bayville vinyl over French Vanilla Metallic, with turbine spoke wheels.



BILL BLASS

Boldness and bravado...
decidedly dramatic.

Now, America's acclaimed Bill Blass treats the two-door Mark VI to grand new looks. Your choice of three dramatic combinations. Each commanding its own attention. Shown here, the White Diamond Grain carriage roof over a rich, Red mid-section, with stark White lower section.

The second combination... the White Diamond Grain carriage roof over a stark White lower section. Each of these comes with Opal leather seats, dramatized by Red straps and

buttons to complete the mood of stunning sophistication.

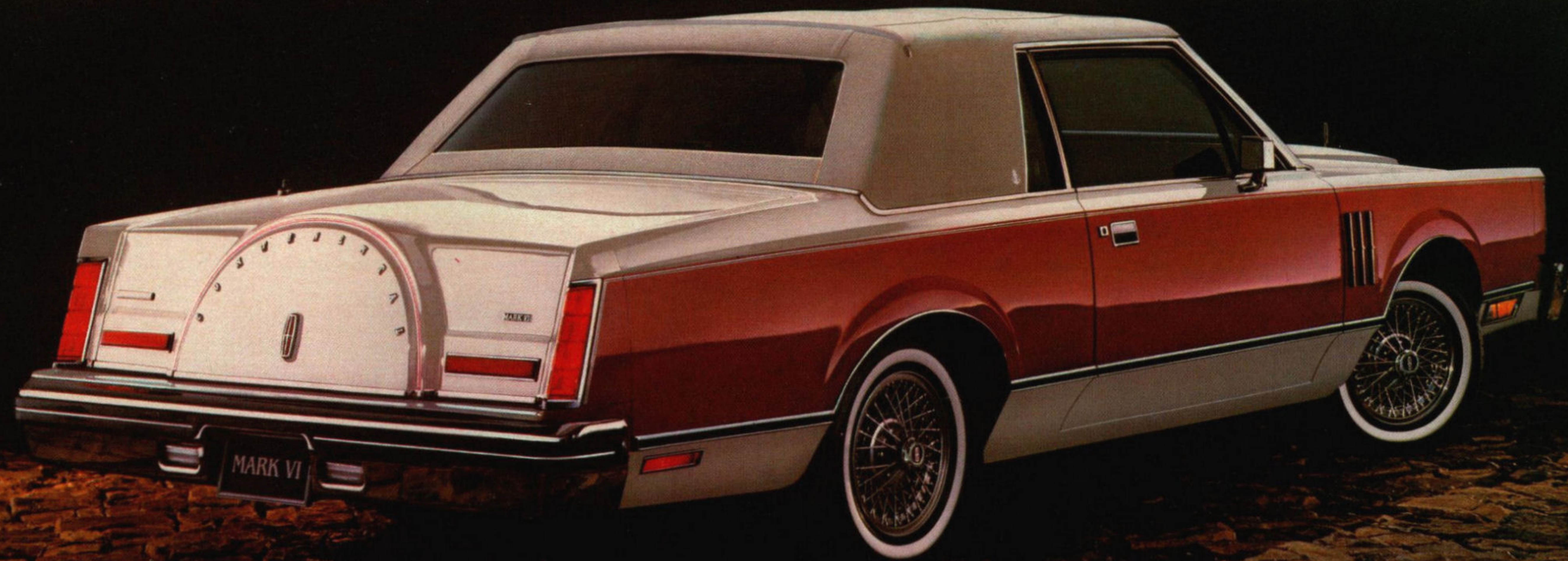
The third combination... the Black Cambria carriage roof atop a bold, Black lower section. Inside, soft Black leather or, shown right, luxurious optional Black leather seating with vinyl trim. Each choice, with contrasting Red straps and buttons, to complement the theme.

Each style is further defined by dual Red stripes on the bodyside and decklid, where you'll discover the

distinctive Blass logo. And completed with his selection of aluminum wire spoke wheels.

Here are three choices distinctively Bill Blass, unmistakably Mark VI. Rich in roominess. Riding with superb smoothness and quietness... with all of the refinements of Mark's advanced technology.

The Bill Blass Designer Series Mark VI. Decidedly dramatic.



The 1982 Bill Blass Designer Series Mark VI two-door, with White Diamond Grain carriage roof over Red, and aluminum wire spoke wheels.



SIGNATURE

Personalized styling for two-door sleekness or four-door stateliness.

Start with your monogram on the front door. A special Signature touch. Followed by the tailored lines of Signature's highly stylized design, with its unique Signature coach roof in richly grained vinyl. And on the

rear-quarter, you'll discover the distinctive Signature Series script. Another Signature exclusive. Open the door to personalized elegance. Relax in the richness of Twin Comfort Lounge seats. Shown below,

left, in fine Fawn leather with vinyl trim; shown below, right, in rich Dark Red Signature cloth. The driver's and passenger's seats provide six-way power that adjusts easily for your precise comfort requirements. And

each seat has its own fold-down armrest and manual recliner for added comfort. Comfort enhanced by full-length door armrests, colour-keyed Allure carpeting, and colour-keyed luxury tilt-steering wheel.

There are elegant Signature touches throughout: door and quarter trim appliques, dual floor well lamps, carpeted cargo area, and the highly personalized instrument panel proudly bearing your signature.

Select your Signature Series two-door or four-door in any one of thirteen rich colour selections with a choice of eleven vinyl roof colours. (See listing of colour choices under Signature Series, Page 22).

Here is a truly individualized automobile. Respected for the personalized touches that make it exclusively Signature Series for 1982.



The 1982 Mark VI Signature Series two-door in Medium Fawn with colour-keyed coach roof and wire wheels.



The Mark VI Signature Series four-door in Maroon with colour-keyed coach roof and lacy spoke wheels.

MARK VI

Expect the unexpected,
experience the exceptional.

Mark VI is a statement of uncompromising luxury. Esteemed for standard features of the highest standards. Electronic warning chimes greet your entry. The new electronic AM/FM

Stereo Search radio with four speakers produces a fullness and clarity of sound. The Electronic Instrument Panel is a technological achievement that provides a wealth of useful driving information.

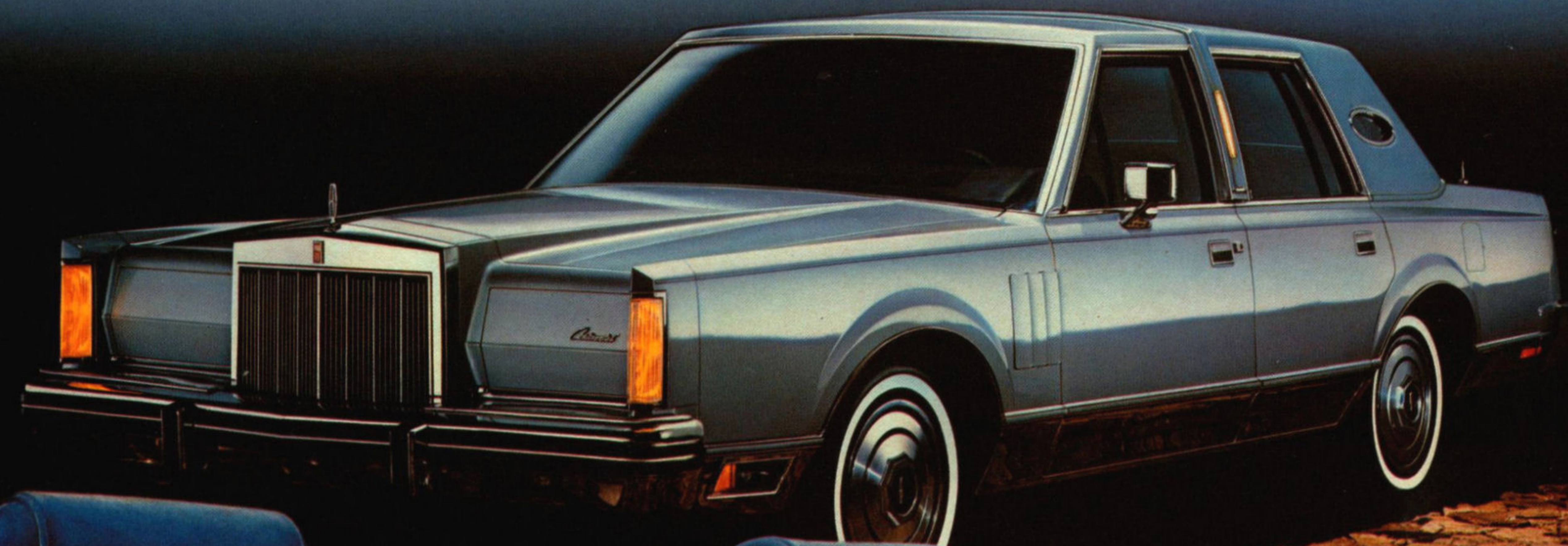
Mark VI is full of thoughtful comfort considerations, like Twin Comfort Lounge seats. Shown below, left, in handsome Pewter coloured cloth, shown below, right, in dramatic Dark Blue cloth. There's the luxury of the

tilt-steering wheel, richly cut carpeting, door courtesy lights, retractable coat hooks, door pull straps, and over sixty other standard luxury features designed for your total driving pleasure. (See page 20 for

complete listing). With so many standard features, you'll still have the satisfaction of personalizing your two-door or four-door Mark VI. Consider options such as the style of wheels your prefer,

the special Keyless Entry System, power moonroof, or any number of other exciting options. (See page 18 for complete listing of options). Select the graceful two-door or the grand four-door. Either way, you

benefit from all the aesthetic and engineering expertise of Mark VI for 1982. Making it the unmistakable choice for uncompromising drivers.



The 1982 Continental Mark VI two-door in Dark Pewter Metallic with colour-keyed full vinyl roof and turbine spoke aluminum wheels.



The 1982 Mark VI four-door in Light Blue Metallic with colour-keyed full vinyl roof and full aluminum wheels.

LINCOLN

Presenting the luxurious Lincoln Town Car for 1982.

The Lincoln legend. Sixty-one years of elegance and luxury. Providing

outstanding comfort and relaxing room. A quiet, stately ride. And a commitment to quality that keeps pace with the changing needs of the times.

With the Lincoln Town Car for 1982, the Lincoln legend lives on. Proud of its past. Responsive to the present.

From its bold grille to its elegant roof line and distinctive decklid, Lincoln Town Car makes a statement of elegance.

This grand manner carries through when you open the door. A quiet world of gracious room awaits you and your passengers. With tailored, rich,

luxurious seating. And generous space that extends to the huge luggage compartment.

Take the wheel and experience the smooth, stately Lincoln Town Car ride. Luxurious. Quiet. In the grand Lincoln manner.

But for all its proud heritage, part of the

Lincoln tradition is to respond to the needs of its times. The new Lincoln Town Car offers high levels of modern technology, such as its optional Electronic Instrument Panel with Message Centre.

And under the hood is a standard 5.0 litre V-8 engine with dual exhaust,

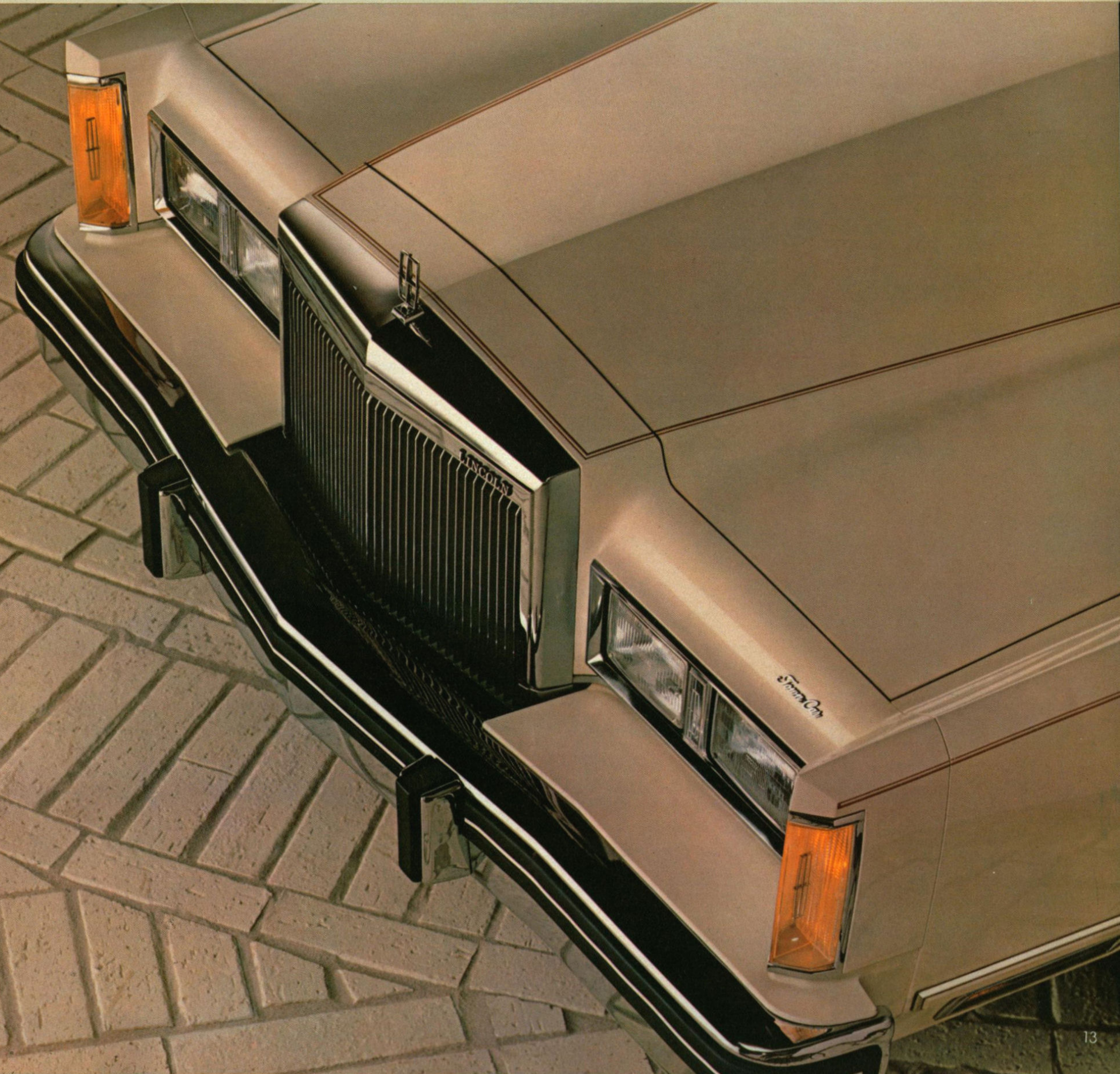
contributing to the Town Car's overall performance and fuel economy. The engine is teamed with the innovative Automatic Overdrive Transmission that engages at around 65 kph (40 mph) to reduce engine revolutions and highway fuel consumption.

For your added reassurance, Town Car incorporates a computerized Self-Diagnostic System to provide faster, more accurate, and more efficient servicing. This year, experience the Lincoln legend for yourself. Select from the Cartier Designer Series Lincoln Town

Car, the distinctly personal Signature Series Town Car, and the luxurious Lincoln Town Car. Lincoln Town Car for 1982. Rich in tradition. Responsive to the needs of today.



The 1982 Signature Series Lincoln Town Car in Dark Pewter Metallic with colour-keyed coach roof.



CARTIER

Outside—a unique statement in Pewter and Opal... pure elegance

The Cartier Designer Lincoln Town Car. The newest Lincoln classic. Touched by all the elegance evoked by the name "Cartier".

The Cartier design begins with the proud Lincoln profile. The selection: the Light Pewter Bayville full vinyl roof. A rich beginning. Followed by the Tu-Tone body in Light Pewter over Opal. Subtle. Striking. Accented with a single Red stripe around the bodyside and decklid. Enhanced by the distinguished Cartier logo in the rear quarter window, and completed by the elegant styling of aluminum

turbine spoke wheels.

Savour the richness of its ride. Its proud performance. Its overall commitment to quality.

Here is a marvelous driving machine. Designed by Lincoln. Dramatized by the Cartier touch. Pure elegance.

Inside—extraordinary elegance in luxurious Opal leather.

The Lincoln interior. Roomy and rich-looking. And when touched by Cartier... exquisite! Begin with the choice of luxurious Pewter carpeting throughout. The mood heightened by Opal leather Twin Comfort Lounge seats, inset with Light Pewter Laurent cloth accents, shown here. Or select Opal leather inset with Light Pewter

leather. A variation on the same elegant theme.

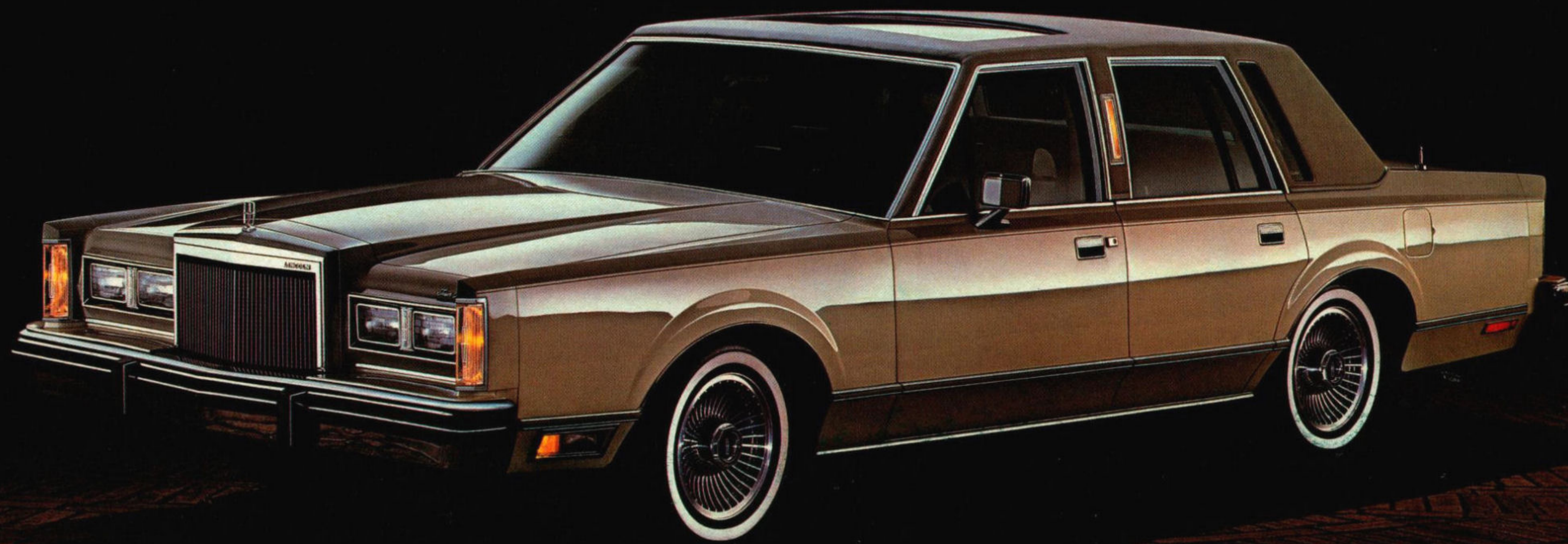
The Twin Comfort Lounge seats comfortably support you. And six-way/six-way power adjustment allows you to adjust your seat to a position that suits you best. The fold-down armrests—front and rear—assure satisfaction for passengers as they relax in the spacious luxury of this magnificently appointed automobile.

The distinctive Cartier logo and identification on the handsome rosewood woodgrain instrument panel denotes the special quality of this elegant Cartier Designer Lincoln Town Car.

Of course, you'll enjoy all the convenience of power features that

are standard: power steering, power brakes, power windows, power vent windows, power antenna, power door locks, and power decklid release.

Here is the grandness of Lincoln. Touched graciously by Cartier. Lincoln's newest classic.



The 1982 Cartier Designer Lincoln Town Car in Light Pewter/Opal with colour-keyed full vinyl roof.



SIGNATURE

Styled for personalized prestige... rich and refined.

The grandeur of Lincoln. Expressed in the highly personalized Signature Series Lincoln Town Car, shown here in Dark Blue Metallic. A masterfully executed four-door.

The splendid silhouette delineates Lincoln's classic design. Enhanced by the custom look of the fine grain vinyl coach roof - exclusive to Signature. And smartly touched by the prestigious Signature Series Script on the rear-quarter pillar.

Once inside, a world of incredible space and richness awaits. Richness, shown here, in Blue cloth, covering the six-way power Twin Comfort Lounge

seats with manual passenger recliner. Cloth-covered headrests add to your complete comfort. Back-seat passengers will be comforted by the fold-down armrest, seatback assist straps, and handy map pockets.

Signature luxury extends to the standard 634 litres (22.4 cu. ft.) of trunk space. Generous in size and fully trimmed with nine ounce carpeting.

You may decide to further personalize your Signature with one or more irresistible options, including the four spoke luxury tilt steering wheel, the keyless entry system with illuminated entry, or the Electronic Instrument Panel with Message Centre.

Whatever your tastes dictate, your Signature Series will accommodate them handsomely.

LINCOLN TOWN CAR

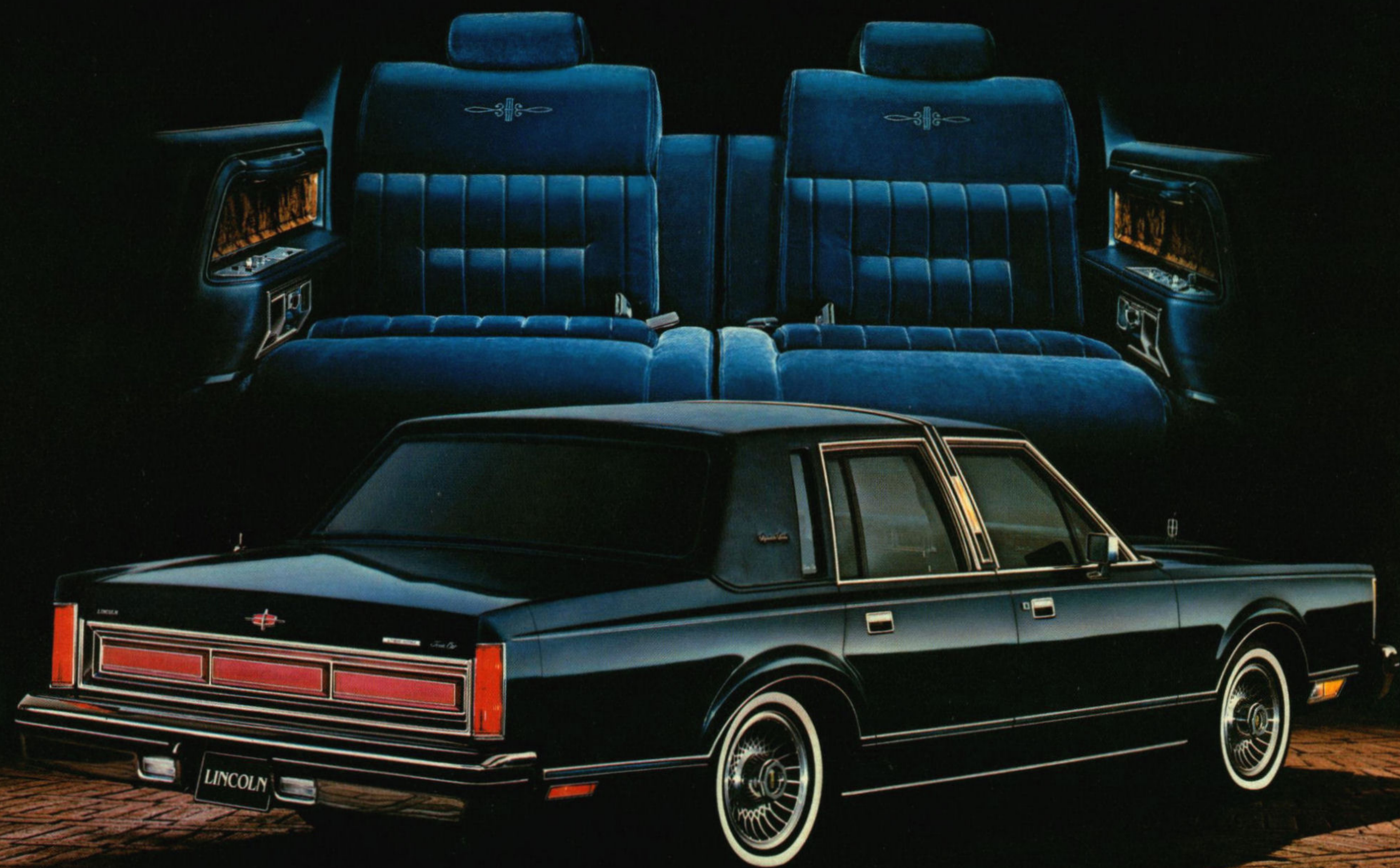
Styled for traditional luxury... graceful and grand.

The Lincoln Town Car. Its fluid lines gracefully state the Lincoln commitment to luxury, shown here in Dark Brown Metallic.

Advanced in its technology. Achieving levels of distinction, evident in its superb ride. Quiet and smooth. Stately and comfortable. Generous also in its interior room. The ample space of a four-door. With complete comfort surrounding you. From the six-way power Twin Comfort Lounge seats, shown here in Medium Fawn, to the fine plushness of richly-cut carpeting.

Luxury is apparent in the colour-keyed four-spoke luxury steering wheel, full-length door armrests, and Electronic AM / FM Stereo Search radio with four speakers, and a host of other fine standard features, such as the remote-control decklid, power door locks, automatic parking brake release, and air conditioning with automatic temperature control. Lincoln Town Car. Comfortable on

stylish boulevards and scenic back-country roads. Respected for its qualities. Renowned for its richness.



The 1982 Signature Series Lincoln Town Car in Dark Blue Metallic with colour-keyed coach roof.



The 1982 Lincoln Town Car in Dark Brown Metallic with colour-keyed full vinyl roof.

O P T I O N A L F E A T U R E S

Mark VI OPTIONAL FEATURES

An attractive selection of luxurious extras

Featured below are only eight from the list of options you may select for your 1982 Mark VI.

1. SPECIALTY VINYL ROOF. Unique full or half-roof treatment.

2. KEYLESS ENTRY SYSTEM. Your own personal five-digit code opens doors and decklid by using buttons on driver's door. If you wish, you may use your key instead. Includes Illuminated Entry System.

3. POWER GLASS MOONROOF. Provides an open-air feel on the open road. Sliding back to open and forward to close at the touch of your finger. (Not available with carriage roof on two-door models.)

4. WHEELS. Here are your choices: lacy spoke aluminum wheels, wire spoke aluminum wheels, turbine spoke aluminum wheels, wire wheel covers. (Refer to Optional Features listing for standard/optional status for various models.)

5. ILLUMINATED ENTRY SYSTEM. All interior lights go on and a ring around the door lock is illuminated when either front door handle is pulled. Included in Keyless Entry System.

6. ELECTRONIC AM/FM STEREO SEARCH RADIO WITH CASSETTE TAPE PLAYER. Features Dolby® noise reduction system. This greatly improves the sound reproduction of your cassette tape music and FM stereo broadcasts. Tape controls include locking fast forward and reverse automatic and manual tape ejection.

7. ELECTRONIC AM/FM STEREO SEARCH RADIO WITH 8-TRACK TAPE PLAYER. Includes electronic touch-button AM/FM tuning and seek feature that locates and tunes to the next station you can listen to clearly. It features advanced interference suppression. This reduces the number of interferences that may occur, so you get better quality sound reproduction.

8. CARRIAGE ROOF. A splendid-looking simulated convertible top. Standard on Bill Blass Designer Series. Not available on four-door models or with moonroof.

Interior Options

- Six-way power Twin Comfort Lounge seats with front passenger recliner
- Six-way power Twin Comfort Lounge seats with driver and front passenger seat recliners*
- Leather seating surfaces
- Citizen's Band, 40-channel transceiver with detachable microphone with built-in controls and power tri-band antenna
- Six-speaker Premium Sound System with power amplifier*
- Front floor mats/rear floor mats (each mat includes carpet insert with rubber backing)

Exterior Options

- Moondust paint
- Accent stripes (bodyside/hood)
- Valino grain vinyl coach roof with frenched backlite (standard on Signature Series)
- Dual power remote-control mirrors
- Owner's monogram* (installed by dealer)
- Turbine spoke aluminum wheels (4) (standard on Pucci Designer Series)
- Lacy spoke aluminum wheels (4)
- Wire spoke aluminum wheels (standard in Signature Series, Bill Blass Designer Series; available on all other models)
- Door-edge guards
- Rocker panel mouldings (delete option)
- License plate frames
- Touring lamps
- Dual shade paint (2-door and 4-door models)**

Functional Options

- Electronic Instrument Panel, delete option (replaced by conventional instrumentation if you wish)
- Headlamp convenience group* (includes automatic headlamp dimmer and "autolamp" on/off delay system)
- Conventional spare tire (white sidewall steel-belted radial with wheel)
- Maintenance-free 71-amp battery
- Wide white sidewall tires (puncture-resistant)

*Standard on Signature Series

**Not available on Designer or Signature Series

OPTIONAL FEATURES, Lincoln Town Car and Signature Series

Your 1982 Lincoln Town Car offers a fine choice of exciting options, including the ones pictured on these two pages.

1. WHEELS. Your choices are: Turbine spoke aluminum wheels, lacy spoke aluminum wheels, wire spoke aluminum wheels, wire wheel covers, or the standard full wheel covers.

2. POWER GLASS MOONROOF. Provides an open-air feel on the open road. Sliding back to open and forward to close at the touch of your finger.

3. SPEED CONTROL. With "resume" feature to maintain the speed you select. Right at the touch of your fingertips.

4. 40-CHANNEL CITIZEN'S BAND RADIO. Includes detachable microphone with built-in controls and power tri-band antenna. Available with all radios.

5. ELECTRONIC INSTRUMENT PANEL AND MESSAGE CENTRE. The stylish, easy-to-read Electronic Instrument Panel includes electronic digital speedometer, electronic graphic fuel gauge, and month/day/date electronic clock. The Message Centre includes trip log, warning messages and instantaneous fuel economy. Right at the touch of your fingertips.

6. ELECTRONIC AM/FM STEREO SEARCH RADIO WITH CASSETTE TAPE PLAYER. Features Dolby® noise reduction system. This improves the sound reproduction of your cassette tape music and FM stereo broadcasts. Tape controls include "locking fast forward" and "reverse automatic" and "manual tape ejection".

7. ELECTRONIC AM/FM STEREO SEARCH RADIO WITH 8-TRACK TAPE PLAYER. Includes electronic touch-button AM/FM tuning and seek feature that locates and tunes to next listenable station. It features advanced interference suppression. This reduces the number of interferences that may occur, and you get better quality sound reproduction.

8. KEYLESS ENTRY SYSTEM. Your own personal five-digit code opens doors and decklid by using buttons on driver's door. If you wish, you may use your key instead. Includes Illuminated Entry System.

9. TWIN COMFORT LOUNGE SEATS. With 6-way/6-way power to adjust to your precise driving needs and comfort. And the extra consideration of manual passenger recliner or driver and passenger recliner.

INTERIOR OPTIONS

- Floor mats, front and rear
- Leather seating surfaces
- Tilt steering wheel
- Speed control (includes resume feature)
- Premium Sound System with power amplifier and six speakers

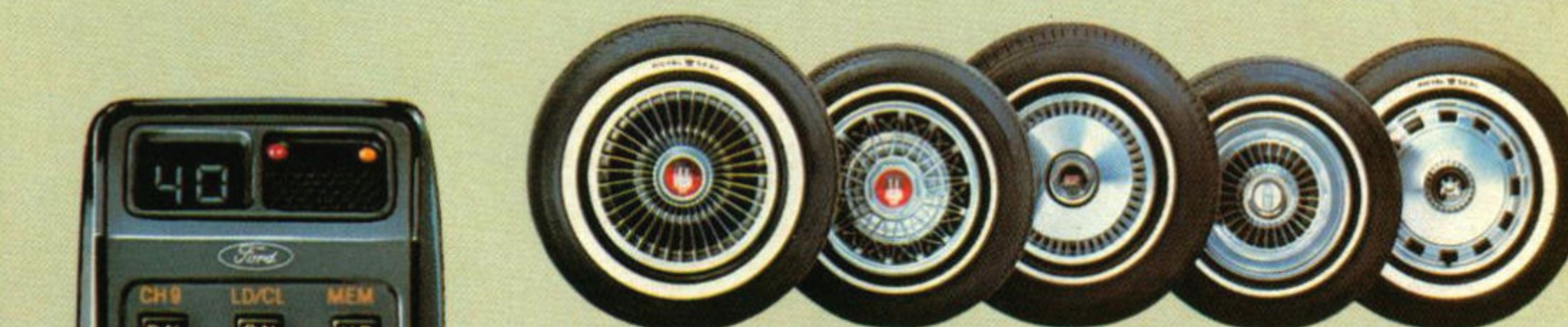
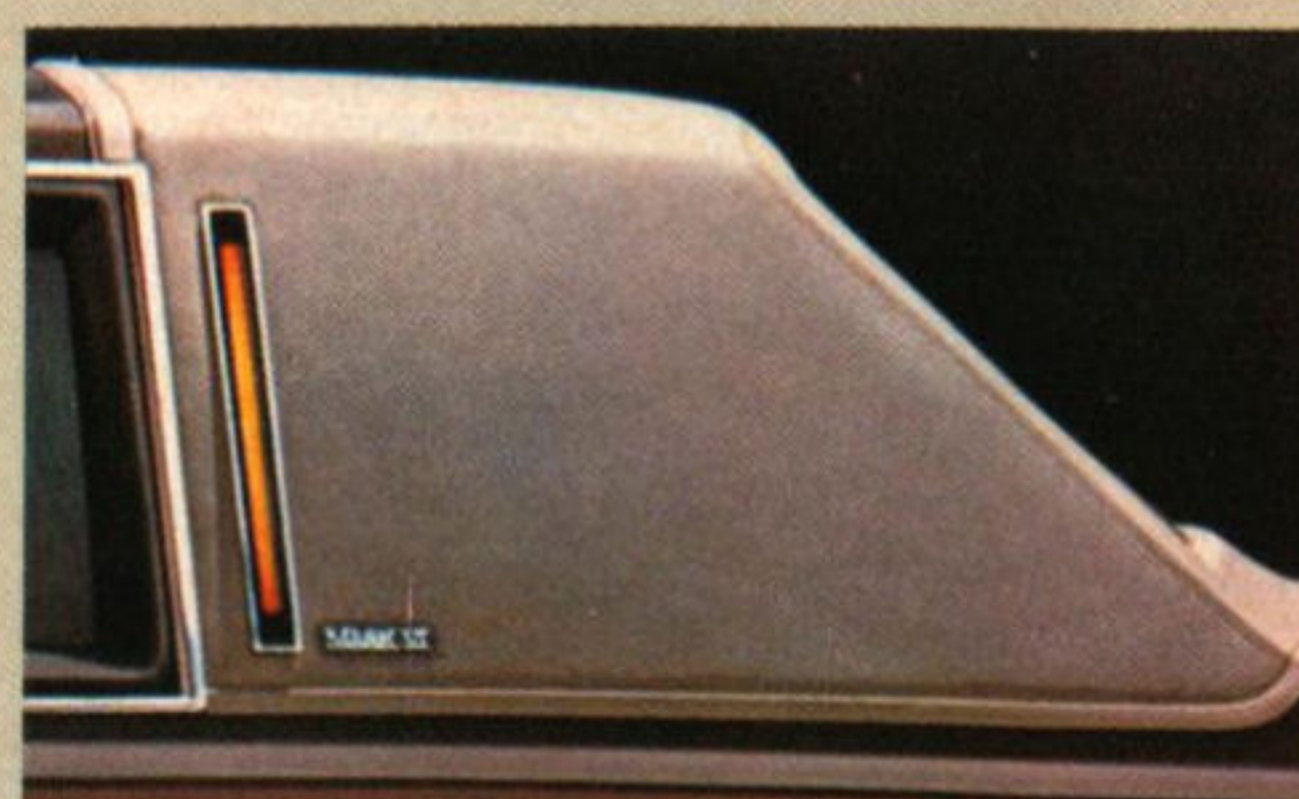
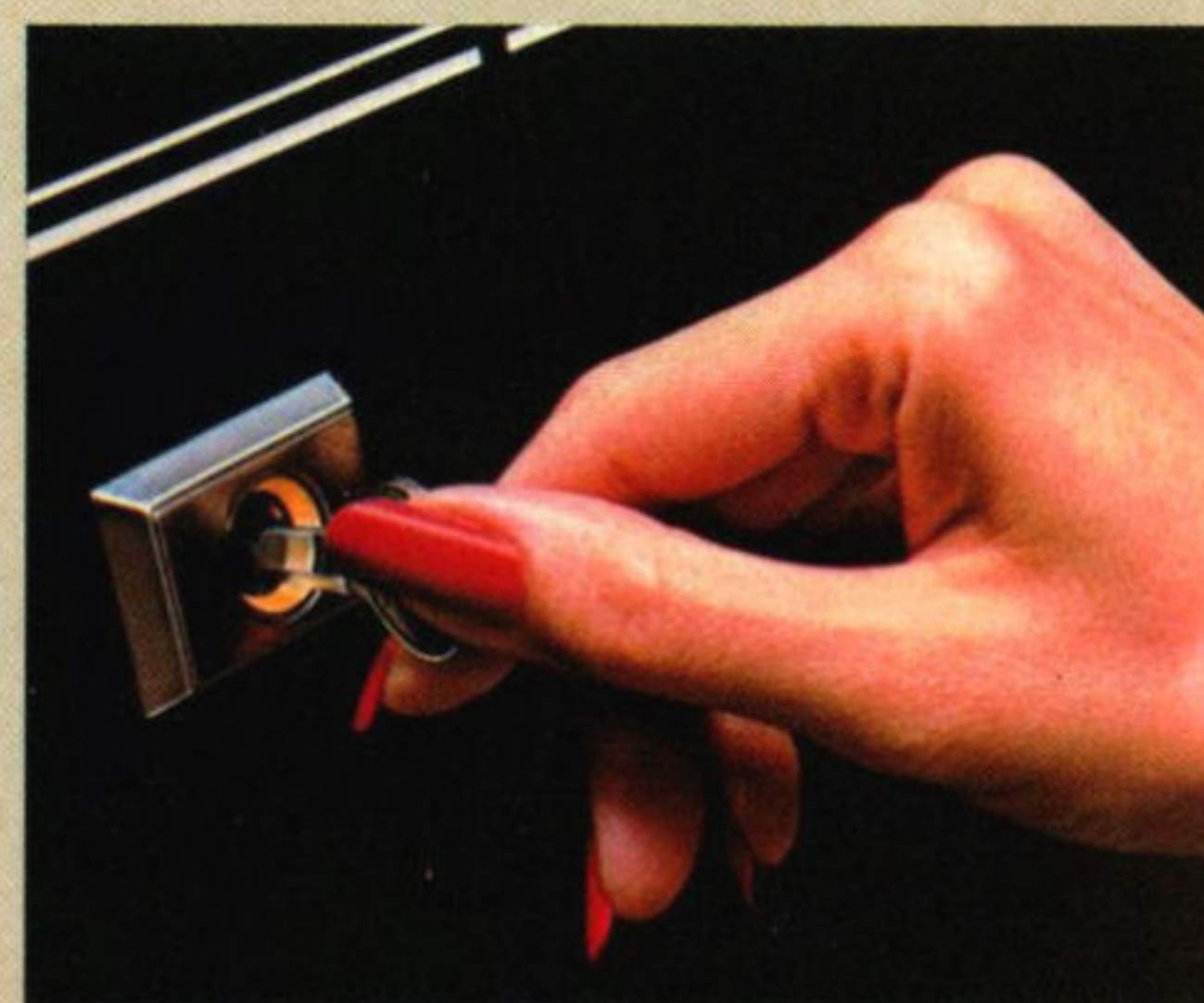
EXTERIOR OPTIONS

- Moondust paint
- Dual-shade paint (4 combinations)
- Coach roof with frenched backlite (standard on Signature Series)
- Power glass moonroof
- Dual power remote-control mirrors
- Owner's monograms
- Turbine spoke aluminum wheels (4)
- Lacy spoke aluminum wheels (4)
- Wire spoke aluminum wheels (4)
- Wire wheel covers (4)
- P205/75R15 wide white sidewall self-sealing tires (4)

FUNCTIONAL OPTIONS

- Illuminated entry system (included in Keyless entry system)
- Headlamp convenience group (includes automatic headlamp dimmer and "autolamp" on/off delay system)
- Interval windshield wipers
- Engine block heater

Dolby® is a registered trademark of Dolby Laboratories, Inc.



MARK VI

A generous offering for all Mark VI models.

Pictured below are just ten of the many standard features you'll particularly appreciate on your 1982 Mark VI.

1. FRONT DOOR ARMREST with convenient power controls that easily operate the windows, lock the doors, adjust the driver's seat and position the side-view mirrors.

2. ELECTRONIC AM / FM STEREO SEARCH RADIO to bring you electronic precision tuning. Touch-button seek feature locates and tunes to the next station you can listen to clearly. Scan feature allows you to audition each program before radio automatically tunes to the next station.

3. AUTOMATIC TEMPERATURE CONTROL AIR CONDITIONING system includes "mix" mode for heated air to flow equally to windshield and passengers. A comforting feature—typical of Mark's commitment to your total comfort.

4. LUXURY FOUR-SPOKE COLOUR-KEYED STEERING WHEEL comes with speed control and "resume" feature to maintain the selected speed and to lessen fatigue on long trips.

5. TWIN COMFORT LOUNGE SEATS with six-way power for the driver. Easily adjustable to provide maximum driving comfort. (Optional recliner.)

6. RIGHT-HAND REMOTE-CONTROL CONVEX MIRROR provides expanded field of vision.

7. STALK-MOUNTED CONTROLS simplify your driving. Interval windshield wiper feature is standard also on Mark VI.

8. DEEP-WELL TRUNK offers 634 litres (22.4 cu. ft.) of usable space, the same for both two-door and four-door models. Fully carpeted with room for convenient upright stowage of grocery bags, suitcases and other tall items.

9. TILT STEERING WHEEL adjusts to five different positions and allows the driver to enter and exit the car with ease.

10. ANOTHER THOUGHTFUL DETAIL IS POWER VENT WINDOWS to provide just the right amount of fresh air.

STANDARD INTERIOR FEATURES

- Chalet cloth covered headlining
- Soft-feel interior garnish mouldings
- Twitchell covered package tray
- Cloth seat trim
- Rear seat folding centre armrest
- Door courtesy light and integral reflectors (front doors)
- High-gloss rosewood trim panel
- Door pull straps
- Lower door carpeting (front and rear doors)
- Lower centre pillar carpeting on 4-door sedans
- 18 oz. cut pile carpeting
- Full length door scuff plates with Surlyn inserts
- Deluxe colour-keyed seat belts
- Rear-quarter pillar lamps
- Retractable coat hooks
- Full luggage compartment trim with spare tire cover
- Dual beam dome / map light
- Roof rail assist handles (2 on 2-door, 4 on 4-door)
- 12" day / night inside rear view mirror
- Large lockable glove compartment

STANDARD EXTERIOR FEATURES

- Wide bi-metal bright rocker panel mouldings
- Centre pillar coach lamps (4-door)
- Mark VI hood ornament
- Concealed round halogen headlamps
- Front bumper guards and rub strips and rear bumper rub strips: Black with White highlights
- Lower bodyside protection
- Full padded vinyl roof: Valino grain with "frenched" backlite
- Decklid lock cover
- Bodyside protection mouldings—wide, colour-keyed
- Decklid accent stripe
- Full wheel covers (4)
- Automatic Overdrive Transmission plaque on decklid

STANDARD FUNCTIONAL FEATURES

- 5.0 litre (302 CID) V-8 engine
- Automatic Overdrive Transmission
- Power steering
- Power brakes: front disc / rear drum
- Power windows
- Power antenna
- WSW Michelin steel-belted radial tires (P205 / 75R15")
- Tinted glass
- Dual note horn
- Electronic warning chimes (replaces buzzer)
- Coolant recovery system

- Traction-Lok differential (includes conventional spare tire)
- Cornering lamps
- Automatic parking brake release
- 68.2 litre (15 imp. gal.) fuel tank
- Viscous drive fan
- Electronic Instrument Panel with Message Centre
- Fluidic windshield washer system
- Heavy-duty battery (54 amp / hr)
- Power decklid release
- Power door locks
- LH & RH remote-control mirror
- Intermittent wipers
- Speed control
- Electric rear window defroster

MARK VI SIGNATURE SERIES 2-DOOR AND 4-DOOR MODEL

(Includes all of the standard Mark VI features, plus all of the following special features):

EXTERIOR

- Colour-keyed bodyside moulding
- Coach lamps
- "Signature Series" script on rear-quarter pillar
- Unique Tu-Tone bodyside and hood accent stripes
- Owner's monogram on front doors
- Colour-keyed license plate frames
- Wire wheel covers (4)
- Bright front fender louvre edges with simulated adjusters
- Exterior colours (13 choices)
- Vinyl roof colours (11 choices)

INTERIOR

- Four colours—Dark Red, Midnight Blue, Pewter, and Medium Fawn
- Personalized instrument panel—nameplate with owner's signature reproduced in gold-tone with a Black background
- Unique seat trim style and appointments in leather or Signature cloth
- Unique door / quarter trim appliqué
- Colour-keyed Allure carpeting on floor, lower door and centre pillar
- Dual floor well lights
- 6-way power driver and passenger seats with driver and passenger recliners

Mark VI Designer Series

(Includes all of the Signature Series Mark VI features, plus the following exclusive features):

Pucci Designer (4-door)

- Tu-tone—Pastel French Vanilla Upper / French Vanilla Metallic lower

- 4-Door specialty roof in Pastel French Vanilla Bayville textured vinyl
- Signature Series sew style in Vanilla leather
- French Vanilla wide bright bodyside mouldings
- Dark Brown with Gold accent stripes on bodyside
- Decklid Dark Brown pinstripe and Pucci logo on right side
- Pucci logo in Dark Brown on fender
- Pucci logo and identification on instrument panel
- Aluminum turbine spoke wheels (4)
- Also available as an option
 - Wire spoke aluminum wheels (4)
 - Wire wheel covers (4)
 - Lacy spoke cast aluminum wheels (4)

Bill Blass Designer (2-door)

Colour Choices:

- Black
- White
- White upper / Red middle / White lower tu-tone
- Decklid kick-up—Black or White
- Black Cambria carriage roof with Black: White Diamond Grain carriage roof with White / Red combination or all White
- Unique Blass sew style
 - Black cloth or leather seats with Red straps and buttons
 - Opal leather with Red straps and buttons
- Black bodyside moulding: White with White / Red or all White
- Dual Black and Red Accent stripes on bodyside
- Double Red Accent strip with Blass logo on decklid
- Bill Blass logo and identification on instrument panel
- Aluminum wire spoke wheels (4)
- Also available as an option
 - Turbine spoke aluminum wheels (4)
 - Lacy spoke cast aluminum wheels (4)
 - Wire wheel covers (4)
- Delete lower bodyside moulding with tu-tone
- Lower bodyside protection with tu-tone

LINCOLN

Your 1982 Lincoln Town Car comes with many attractive and functional standard features.

STANDARD INTERIOR FEATURES

- Twin Comfort Lounge seats with six-way power driver's seat
- Chalet cloth covered headlining
- Soft-feel interior door mouldings
- Retractable coat hooks
- Cloth seat trim
- Rear-seat folding centre armrest
- Full-length door armrests
- Four-spoke, colour-keyed luxury steering wheel
- Door pull straps
- Door courtesy lights and integral reflectors (front doors)
- Instrument panel with three-pod, black-faced instrument cluster, trip odometer
- Deluxe colour-keyed seat belts
- Full-length door scuff plates with Surlyn inserts
- 18-ounce cut-pile carpeting
- Lower door carpeting
- Full luggage compartment trim with spare-tire cover
- Roof rail assist handles
- Dual-beam map / dome light
- 12-inch day / night rearview mirror
- Rosewood woodtone instrument panel appliqué and armrest side inserts

STANDARD EXTERIOR FEATURES

- Bright rocker panel mouldings
- Coach lamps
- Premium bodyside moulding
- Lincoln star hood ornament
- Quad-rectangular halogen headlamps
- Front bumper guards and rub strips and rear bumper rub strips
- Valino grain full-vinyl roof
- Automatic overdrive plaque
- Hood and bodyside accent stripes
- Lower bodyside protection
- Luxury wheel covers (4)

STANDARD FUNCTIONAL FEATURES

- 5.0 litre (302 CID) V-8 engine
- Dual exhaust
- Automatic Overdrive Transmission
- Power steering

- Power brakes, front disc / rear drum
- Power windows and vent windows
- Electronic AM / FM Stereo Search radio with four speakers
- Power antenna
- White sidewall steel-belted radial tires (Michelin)
- Automatic temperature control air conditioner / heater
- Tinted glass
- Analog clock
- Dual note horn
- Electronic warning chimes
- Coolant recovery system
- Traction-Lok differential (includes conventional spare tire)
- Cornering lamps
- Engine temperature gauge (in addition to warning light)
- Viscous fan
- Fluidic windshield washer system
- Automatic parking brake release
- Heavy-duty battery (54 amp / hr)
- Power door locks
- Remote-control decklid release
- Remote-control left-hand rearview mirror
- Electric rear window defroster
- Heated outside left-hand remote-control mirror

LINCOLN SIGNATURE SERIES STANDARD EQUIPMENT

Lincoln Signature Series includes all Lincoln Town Car standard equipment unless otherwise specified.

INTERIOR

- Distinctive sew-style seat with cloth-covered headrests
- Seatback assist straps and map pockets
- Dual floor well lights
- Nine-ounce needled carpeting in luggage compartment
- Carpeted door and quarter-panel trim
- Padded centre pillar with lower carpeting
- Unique door and quarter trim woodgrain armrest inserts

EXTERIOR

- Coach roof
- Signature Series identification script on rear-quarter pillar

FUNCTIONAL

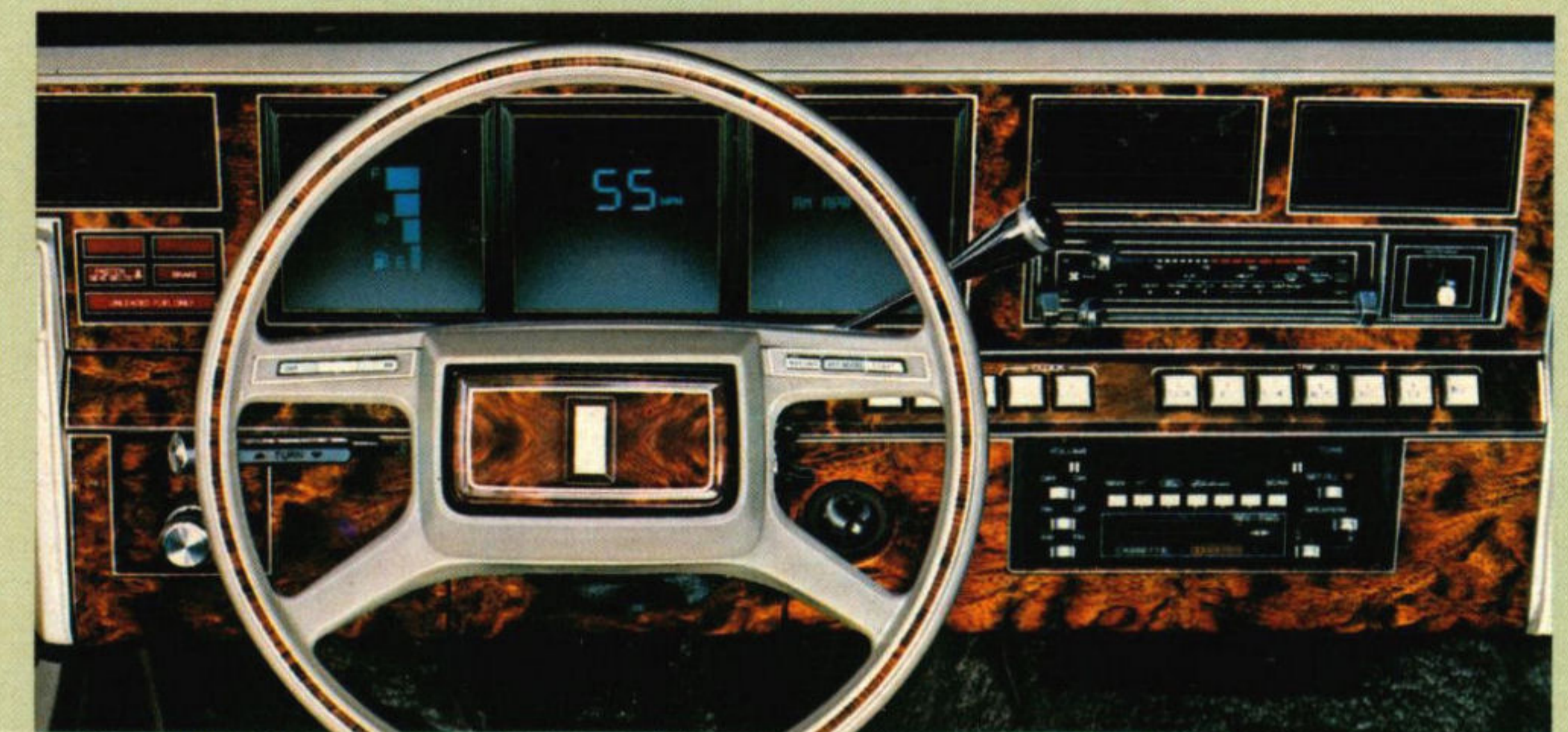
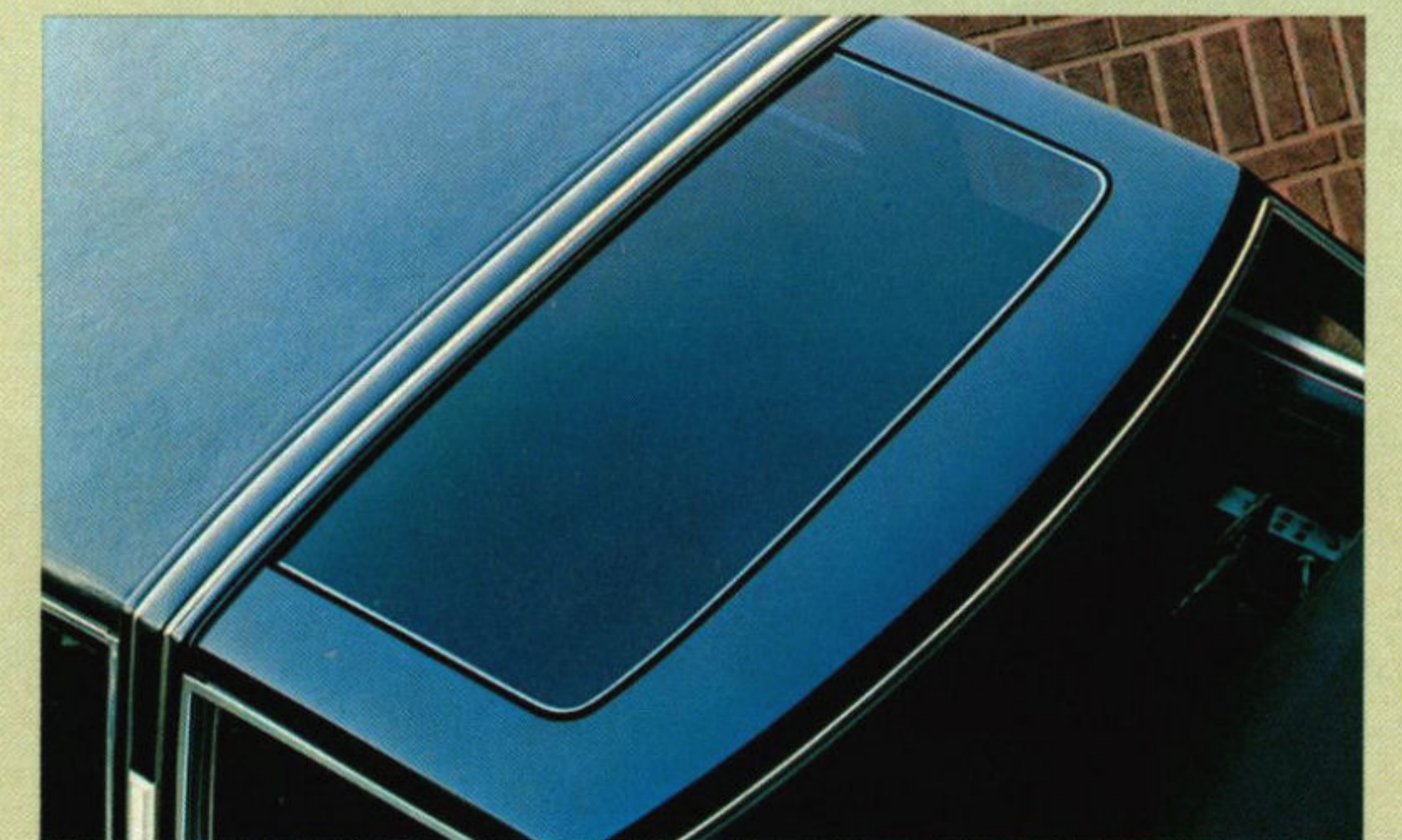
- 6-way Power (driver and passenger) Twin Comfort Lounge seats with manual passenger recliner

Lincoln Cartier Designer Series

Includes all of the Signature Series features, plus the following exclusive features:

CARTIER

- Tu-Tone Light Pewter upper, Opal lower
- Signature Series sew style with:
 - Opal leather with Light Pewter Laurent body cloth in the insert area
 - Opal leather with Light Pewter leather in the insert area
- Opal bodyside moulding
- Opal and Pewter in single Red bodyside paint stripe
- Decklid single Red paint stripe with Cartier logo in Red tape
- Cartier Designer logo in rear quarter windows
- Cartier Designer logo and identification on instrument panel
- Aluminum turbine spoke wheels (4)
- Also available as an option:
 - Lacy spoke aluminum wheels (4)
 - Wire spoke aluminum wheels (4)
 - Wire wheel covers (4)



C O L O R C H O I C E S

MARK VI
Brilliant ways to personalize your 1982 Mark VI.

EXTERIOR COLOURS

The variety of exterior colours for Mark VI, is designed to coordinate with the many available external trim and roof colours. Working with such a wide choice of possibilities, you are able to express your individual taste most effectively. See your Dealer's colour and upholstery book for a full and more accurate presentation of colour and trim choices.

STANDARD EXTERIOR COLOURS

- Light Pewter
- Medium Dark Pewter Metallic*
- Dark Blue Metallic*
- Pastel French Vanilla
- Dark Brown Metallic*
- Medium Dark Mulberry Metallic*
- Wedgewood Blue
- Black
- White

OPTIONAL EXTERIOR COLOURS (Moondust)

- Dark Red Metallic*
- Light Blue Metallic*
- French Vanilla Metallic*
- Medium Fawn Metallic

Dual Shade Paint Options (upper/lower)

Black/Medium Dark Pewter Metallic, Dark Blue Metallic/Light Blue Metallic, and Dark Brown Metallic/Medium Fawn Metallic.

Vinyl roof colours

Valino grain vinyl roof colours come in: Black, Light Pewter Metallic, Dark Pewter Metallic, Dark Red Metallic, Medium Blue Metallic, Light Blue Metallic, Wedgewood Blue, Pastel French Vanilla, French Vanilla Metallic, Light Fawn Metallic, Dark Brown Metallic, Medium Dark

Mulberry Metallic, and Silver Metallic. Signature Series vinyl roof colours are: Black, Light Pewter Metallic, Dark Pewter Metallic, Dark Red Metallic, Medium Blue Metallic, Light Blue Metallic, Wedgewood Blue, Pastel French Vanilla, French Vanilla Metallic, Light Fawn Metallic, Dark Brown Metallic, Medium Dark Mulberry Metallic, and Silver Metallic.

Carriage roof colours

Carriage roofs are available in: Black, Medium Blue Metallic, and Dark Brown Metallic Cambria. Two-door specialty roof available in White or Light Fawn Metallic Diamond Grain. Four-door specialty roof available in White Bayville.

Accent Stripes

Accent stripes are offered in the following colours: Black, White, Dark Pewter, Bright Red, Medium Blue, Pastel Sand, Gold, Light Champagne, Dark Champagne, Light Cordovan, and Dark Cordovan. Signature Series accent stripes are available in: Gold/Red, Dark Red/Red Orange, Dark/Light Blue, and Dark Copper/Coral. Dual Shade accent stripe for the four-door: Dark Pewter/Medium Silver/Candy Red, Light Blue/Dark Blue/Light Blue, Medium Fawn/Dark Champagne/Dark Copper. For the two-door: Dark Pewter/Candy Red, Light Blue/Dark Blue, Medium Fawn/Dark Copper.

Interior Trim

Twin Comfort Lounge seats are offered in both cloth and leather. Cloth colours are: Black, Pewter, Dark Red, Midnight Blue, French Vanilla, and Medium Fawn. In leather, available colours are: Black, Pewter, Dark Red, Midnight Blue, French Vanilla, Medium Fawn, Mulberry, Opal with Red, Opal with Blue, and Opal with Fawn.

*Denotes Clearcoat colour, a finish that provides a brilliant deep surface because the pigment lies beneath a clear, protective baked enamel coating.

LINCOLN
Beautiful ways to individualize your 1982 Lincoln Town Car

EXTERIOR COLOURS

A broad spectrum of exterior colours is offered so that you may apply your personal taste and judgement to your 1982 Lincoln. These colours are designed to coordinate with a wide choice of available interior trims and roof treatments. For a more precise presentation of colour and trim availabilities, refer to your Dealer's colour and upholstery book.

STANDARD EXTERIOR COLOURS

- Light Pewter
- Medium Dark Pewter Metallic*
- Dark Blue Metallic*
- Pastel French Vanilla
- Dark Brown Metallic*
- Medium Dark Mulberry Metallic*
- Wedgewood Blue
- Black
- White

OPTIONAL EXTERIOR COLOURS (Moondust)

- Dark Red Metallic*
- Light Blue Metallic*
- French Vanilla Metallic*
- Medium Fawn Metallic*
- Light Pewter Metallic*
- Light Fawn Metallic*
- Medium Mulberry Metallic*

Dual Shade Paint Options (upper/lower)

Medium Dark Pewter Metallic/Light Pewter Metallic, Dark Blue Metallic/Light Pewter Metallic, Dark Red Metallic/Silver Metallic, Light Fawn Metallic/Medium Fawn Metallic

Vinyl Roof Colours

You may select from a choice of thirteen vinyl roof colours: Black, White, Light Pewter Metallic, Dark Pewter Metallic, Dark Red Metallic,

Midnight Blue Metallic, Light Blue Metallic, Wedgewood Blue, Pastel French Vanilla, Light Fawn Metallic, Dark Brown Metallic, Medium Dark Mulberry and French Vanilla. These same colours are available for the coach roof as well.

Accent stripes

Accent stripes are offered in the following eleven colours and are coordinated with exterior paint colours: Black, White, Dark Pewter, Bright Red, Medium Blue, Pastel Sand, Gold, Light Champagne, Dark Champagne, Light Cordovan, Dark Cordovan. With the Optional Dual Shades, a unique Tu-Tone accent stripe is used in one of these four combinations: Silver Metallic/Dark Red, Light Pewter/Dark Pewter, Light Fawn/Light Fawn.

Interior Trim

Your Twin Comfort Lounge seats come in cloth or optional leather, in the following seven colours: Black, Pewter, Dark Red, Midnight Blue, Medium Fawn, French Vanilla, or Mulberry. Leather seats also available in Opal/Black, Opal/Pewter, Opal/Red, Opal/Blue, Opal/Fawn, and Opal/Mulberry.

*Denotes Clearcoat colour, a finish that provides a brilliant deep surface because the pigment lies beneath a clear, protective baked enamel coating.

Continental Mark VI Dimensions

	2-Door		4-Door	
Wheelbase	2903 mm (114.3")		2979 mm (117.3")	
Overall Length	5486 mm (216.0")		5568 mm (219.1")	
Overall Height	1400 mm (55.1")		1425 mm (56.1")	
Overall Width	1984 mm (78.1")		1984 mm (78.1")	
Wheel Tread				
Front	1580 mm (62.2")		1580 mm (62.2")	
Rear	1575 mm (62.0")		1575 mm (62.0")	
FRONT				
Headroom	965 mm (38.0")		991 mm (39.0")	
Shoulder				
Room	1542 mm (60.7")		1542 mm (60.7")	
Hiproom	1435 mm (56.5")		1435 mm (56.5")	
Legroom	1069 mm (42.1")		1069 mm (42.1")	
REAR				
Headroom	960 mm (37.8")		965 mm (38.0")	
Shoulder				
Room	1547 mm (60.9")		1542 mm (60.7")	
Hiproom	1448 mm (57.1")		1460 mm (57.8")	
Legroom	965 mm (38.0")		1100 mm (43.3")	
Overall				
Passenger Seating Capacity	-	6	-	6
Luggage Capacity (litres/cu. ft.)	634 (22.4)		634 (22.4)	
Fuel Capacity (litres/imp. gal.)	68.2 (15.0)		68.2 (15.0)	
Curb Weight (kilograms/lbs)	1838 (4051)		1879 (4142)	

1982 Lincoln Dimensions

Wheelbase	2979 mm (117.3")
Overall Length	5565 mm (219.0")
Overall Width	1984 mm (78.1")
Overall Height	1425 mm (56.1")
Wheel Tread	
Front	1580 mm (62.2")
Rear	1575 mm (62.0")
Luggage Capacity (litres/cu. ft.)	634 (22.4)
Fuel Capacity (litres/imp. gal.)	68.2 (15.0)
Curb Weight (kilograms/lbs.)	1845 (4068)
FRONT*	
Headroom**	991 mm (39.0")
Legroom	1105 mm (43.5")
Shoulder Room	1542 mm (60.7")
Hiproom	1435 mm (56.5")
REAR	
Headroom	965 mm (38.0")
Legroom	1100 mm (43.3")
Shoulder Room	1542 mm (60.7")
Hiproom	1460 mm (57.8")
Overall Passenger Seating Capacity	- 6

*Interior dimensions with six-way power seat in rearmost position.

**Front headroom 2" less with optional moonroof.



...FOR SURE

Quality Replacement Parts from Ford

Mark VI and Lincoln come equipped with factory engineered and approved parts, including a dependable Motorcraft battery, Motorcraft spark plugs, shock absorbers, ignition parts and long life oil filter. For continued performance be sure to specify genuine Motorcraft parts whenever replacement is necessary.

Corrosion Protection

All Mark VI and Lincoln cars are protected with the DURAGUARD System, which includes 7 processes built in at the factory as standard equipment, to provide corrosion protection as follows:

- pre-coated steel or doors, quarter panels and other selected areas;
- galvanized steel on rocker panels, selected cowl tops and underbody parts;
- vinyl sealer on the underside of rear wheelhouses;
- electrocoat process to apply corrosion resistant primer paint, also on the entire body;
- aluminized wax sprayed into hard-to-reach lower body areas, the inside surfaces of doors and quarter panels;
- protective vinyl coating on the lower bodyside for resistance to stone chipping and road abrasion.

The DURAGUARD System is backed by a no-extra charge 36-month unlimited distance manufacturer's warranty against corrosion perforation. This warranty, transferable to succeeding owners during this warranty period, covers the cost of both labour and materials for repair of perforation of parts caused by corrosion. Exhaust system components are excluded. The basic 12-month/20,000 kilometre warranty covers corrosion, other than perforations, that are due to defective factory materials or workmanship. Ask your dealer for details.

This brochure has been prepared only as a general guide to the customer and every effort has been made to ensure that all information is correct at the time of printing. However, some errors may have been included and some of the information or specifications may have been changed since the time of printing. Your dealer will have full details of any changes and/or corrections and you should ask him to bring you up to date at the time of your purchase. Ford Motor Company of Canada, Limited reserves the right to change prices, colours, materials, specifications and models and to discontinue models without notice and without incurring obligations of any kind. Some features described or shown may be optional at extra cost. Some options are required in combination with other options.

LINCOLN / MARK VI



