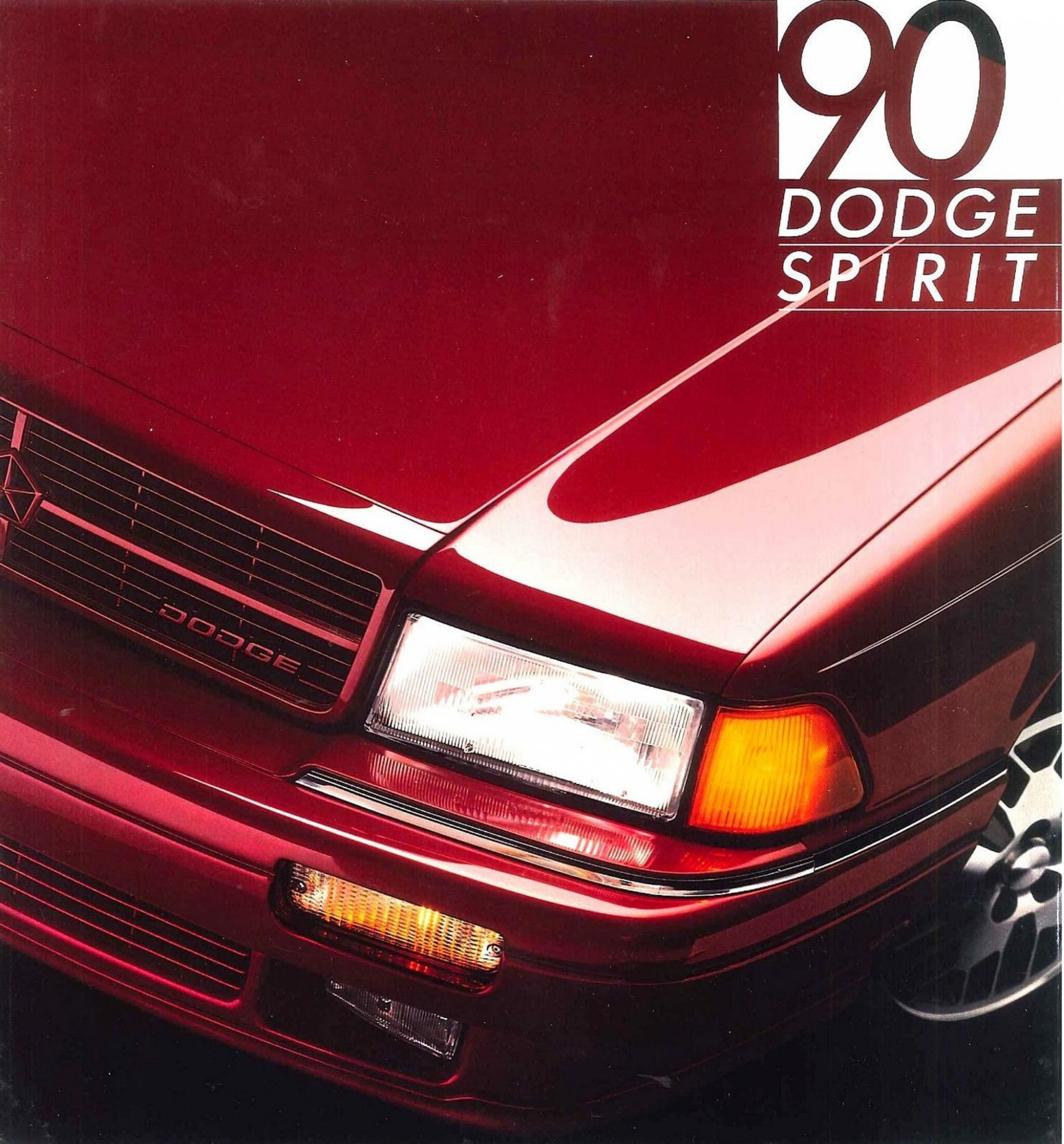
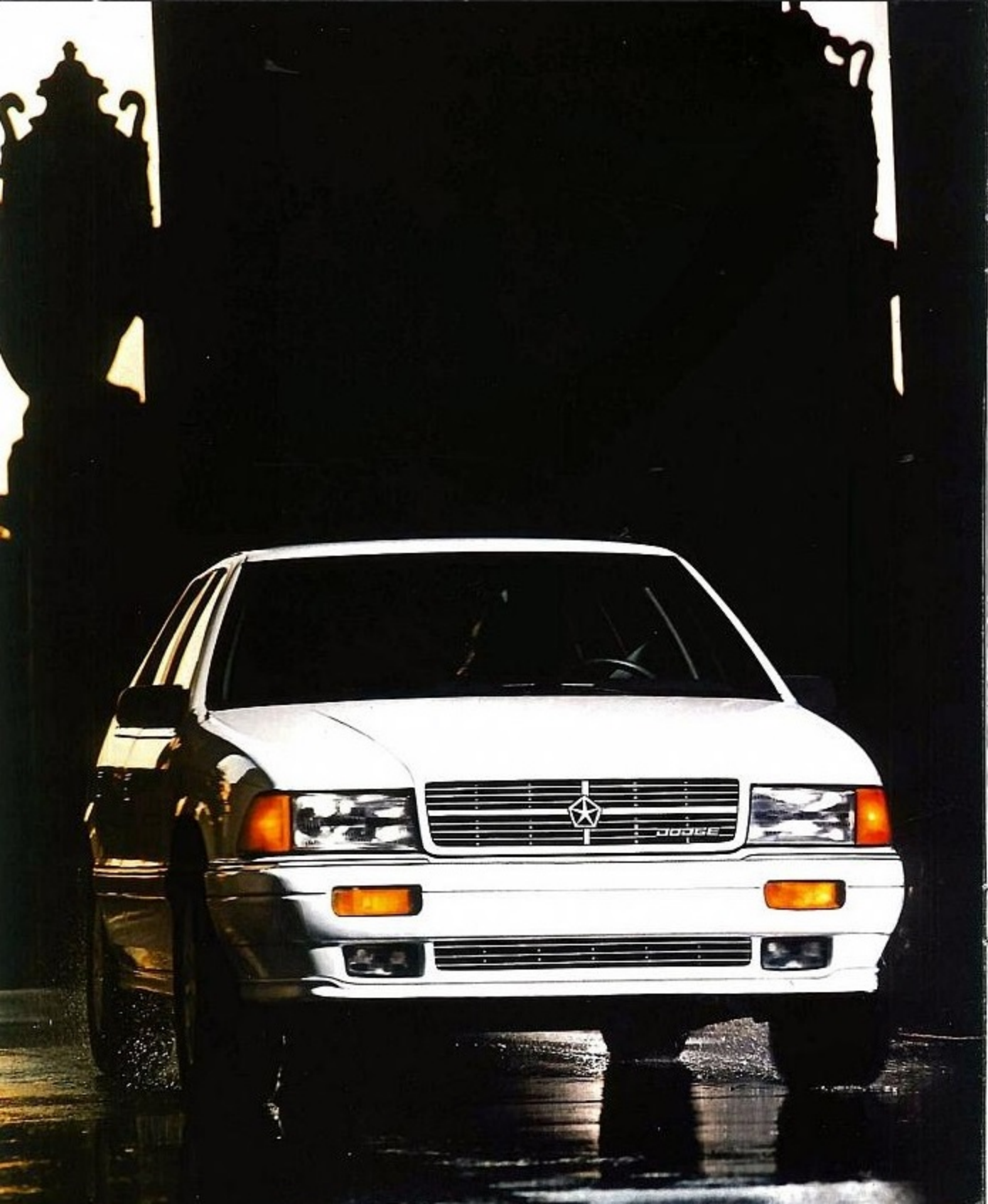


# 90

DODGE  
SPIRIT







---

### Give your life new Spirit

---

If you're seeking a family car with the moves of a sports sedan, then look no further. The 1990 Dodge Spirit is quick to oblige you with all the makings of such a machine: Expressive lines. Precise handling. And rousing power.

Catch the excitement in the Spirit ES, shown in Bright White Clear Coat. Hold tight to the notion of its lively 2.5-liter SOHC MPI turbocharged engine just waiting to be revved. Its leather-wrapped steering wheel feels good in your hands. It should. With it, you command one of the most gratifying, responsive sedans to ever come your way.



3.0-liter OHC MPI V-6 engine\*

Take full control. Position-sensitive front struts stabilize your ride. Front-wheel drive conquers the curves.

To celebrate driving in a slightly more civilized manner, go with the dashing Spirit LE. Equip it with the vigorous 3.0-liter V-6 engine\* now optional on all Spirit models. Its advanced inner workings can generate 141 horsepower at 5,000 rpm. Translation: The car gobbles up the road.

This dynamic engine is enhanced by Ultradrive, the world's only fully adaptive electronically controlled automatic transaxle. A computer brings you up to speed with split-second throttle response. Superb fuel economy is supplied with equal efficiency. Thus, mechanical moxie becomes precision performance.

Though smooth and quiet, you sense the power. You're in the spirit now. With important instruments close at hand, your



Ultradrive automatic transaxle

driving enthusiasm fits right in. Optional 50/50 front bench seats allow six to sit comfortably within Spirit's hushed interior, enjoying a distinct departure from the routine. Those in back will appreciate over three feet of rear leg room—a stretch seldom found in a midsize sedan.

An added degree of convenience is provided by both front and rear doors that open to an extra-wide angle for easy entry and exit. Though if truth be known, you probably won't want to leave this vehicle at all.

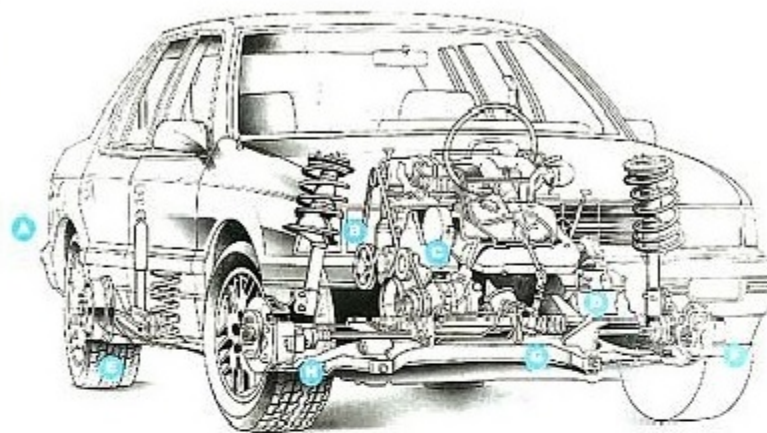
Spirit. A striking balance of performance prowess and expressive style. Designed to make your spirit soar.

Some of the equipment shown or described throughout this catalog is available at extra cost.

About this catalog. Since the time of printing, some of the information you'll find in this catalog may have been updated. Ask your dealer for details.

\*Manufactured by Mitsubishi Motors Corporation.





### Anatomy of a Performance Sedan

**A. Aerodynamic Styling.** Dampens wind noise and helps improve fuel economy.\*

**B. Suspension.** Standard gas-charged position-sensitive front struts smooth out rough roads. Rear beam axle trailing arm suspension with integral anti-sway bar offers a controlled ride, agile handling.

**C. Responsive Engines.** A 2.5-liter SOHC EFI engine is standard on Spirit and Spirit LE. A 2.5-liter SOHC MPI turbo is standard on

Spirit ES and available on all Spirit models. A 3.0-liter OHC MPI V-6 engine† is another powerful option on all Spirit models.

**D. Transaxles.** Available five-speed manual overdrive transaxle promotes quiet cruising. A smooth three-speed automatic is optional. Available (only with optional V-6 engine) Ultra-drive electronically controlled four-speed automatic provides swift, smooth, economical performance.

**E. All-Season Touring Tires.** A set of four P195/70R14 all-season touring tires are standard on Spirit and Spirit LE. All-season P205/60R15 performance tires are standard on Spirit ES, optional on Spirit and Spirit LE.

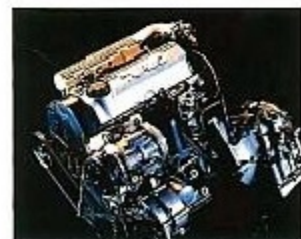
**F. Front-Wheel Drive.** All Spirit models offer proven front-wheel drive, where the weight of the engine over the driving wheels provides better stability and traction on wet and slippery surfaces.

**G. Power-Assisted Steering.** Standard power-assisted front discs are vented for rapid heat dissipation; rear drums are self-adjusting. Power-assisted four-wheel disc brakes are standard on Spirit ES.

**H. Power-Assisted Brakes.** Standard power-assisted front discs are vented for rapid heat dissipation; rear drums are self-adjusting. Power-assisted four-wheel disc brakes are standard on Spirit ES.

\*See your dealer for mileage figures.

†Manufactured by Mitsubishi Motors Corporation.



2.5-liter SOHC turbo engine

### The untamed Spirit ES. Fit for life in the fast lane.

This car transports you into a new realm of automotive design. As the performance critics at "Motor Trend" magazine keenly observed, "The Spirit ES makes competitive sedans—foreign or domestic—look poorly thought out."

Consider the shape. A vision in Bright White. Its contours, clean. Its stance, purposeful. Its front air dam and road-gripping ground effects, downright imposing.

At its heart lies a pulse-quickening fuel injected 2.5-liter turbocharged engine with twin balance shafts.

The magic of a low inertia turbine compressor leaves "turbo lag" behind. You swiftly take the road ahead, whenever the spirit moves you.

Put this car through its paces. Its power-assisted 14:1 ratio rack-and-pinion steering and sport handling sus-

pension provide one good turn after another. Even the demanding professionals at "Car and Driver" magazine were impressed at how "The Spirit ES sweeps through long bends with unruffled poise."

You can safely meet whatever lies around the corner with standard power-assisted four-wheel disc brakes. But don't stop here. Such technical advances as the new driver-side air bag will protect you well down the road. Get the inside story from the diagram shown at the above right.



For added safety, both lap belts and shoulder restraints are provided for front and rear outboard seat passengers. The steering wheel is equipped with a driver-side air bag to provide a supplemental restraint system.

Electric rear window defroster and tinted glass all around help ensure excellent visibility.

Split fold-down rear seats flatten out separately or together, extending storage space from the trunk into the back seat.

Standard childproof rear door locks provide an extra measure of safety.



### Experience the Spirit within

When something feels "right," you know it. Such is the case with the Spirit ES interior.

A leather-wrapped steering wheel fills your hand nicely. Analog gauges provide a quick read. A message center and trip computer tell you

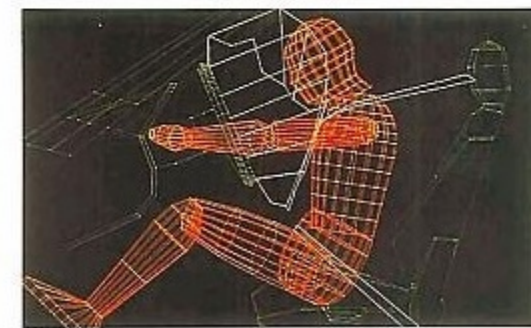


everything from "door ajar" to "distance traveled."

Up front, sport bucket seats with head restraints bolster your confidence in tight turns. Seven-position lumbar support for the driver offers added comfort, along with a driver-side air bag which provides added safety.

Split fold-down rear seats open up new possibilities for stowing awkward items, such as skis. Spacious seating welcomes up to five people and offers generous rear leg room for those long stretches. So sit back and relax. Experience the Spirit ES interior, shown in Medium Quartz.

\*Some AM stereo broadcasting may not be compatible with this radio.



THE ALLSTATE SAFETY LEADERSHIP AWARD was presented to Chrysler Corporation in recognition of its being the first American carmaker to provide driver-side air bags as standard equipment on all domestic built 1990 Dodge passenger cars.

The console offers two handy, fold-out cup holders for rear seat travelers.

A trip computer reveals average fuel economy, estimated distance to empty, miles driven, and elapsed time on the road.

A six-function message center alerts you of door and trunk lid ajar, headlight, taillight, brake light, and windshield wiper fluid functions.

You'll be happy to hear that the AM stereo\*/FM stereo electronically tuned radio with cassette tape player is standard.





Power-assisted disc brakes

**Expressive Lines Make a Powerful Statement.**

From its flush aero headlights to its gentle curves, Spirit LE reflects style.

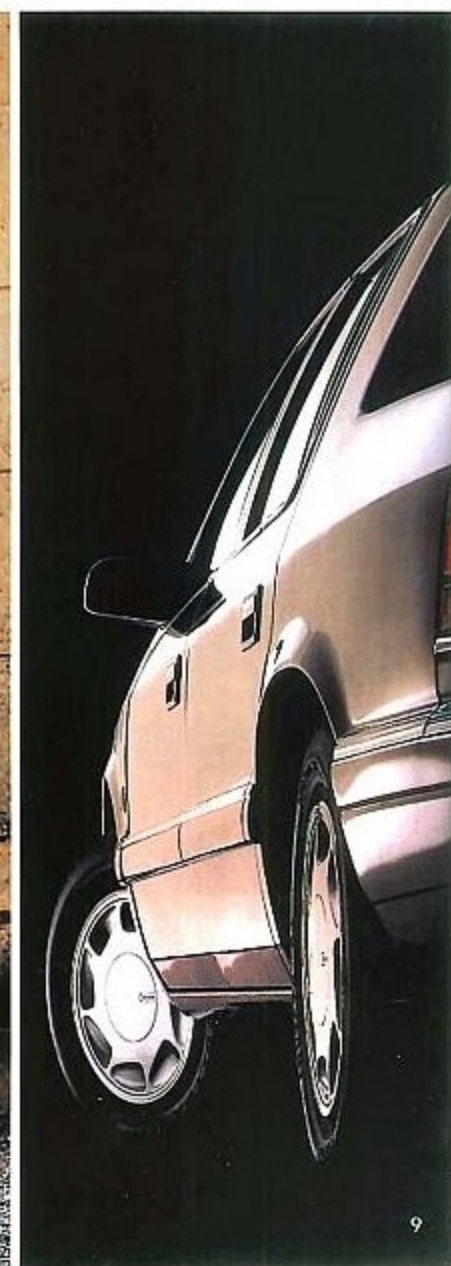
Summon its power from your choice of three thoroughbred engines: the standard 2.5-liter

SOHC EFI, the optional 3.0-liter OHC MPI V-6\*, or the optional 2.5-liter SOHC MPI turbo. Enjoy road stability enhanced by taut power steering, while power-assisted front disc brakes—vented to diffuse heat—help you decelerate.

Spirit LE carries six with optional 50/50 front bench seats and uncommon backseat roominess. Thoughtful touches include: tilt steering wheel, speed control, side window demisters, and illuminated vanity mirrors. Open the trunk lid and unload bags easily thanks to a low liftover design.

Spirit LE, shown in Dark Quartz Gray Metallic Clear Coat.

\*Manufactured by Mitsubishi Motors Corporation





## Optional Packages.

Your best value in ordering available equipment is Spirit's wide selection of optional packages. Significant savings can be realized on these packaged items compared to the cost of purchasing items separately.

### Super Discount Package A

(Available on Spirit only)



Includes the contents of Deluxe Convenience and Popular Equipment Discount Packages.

### Super Discount Package B

(Available on Spirit only)



Includes the contents of Deluxe Convenience, Power Equipment and Popular Equipment Discount Packages.

### Super Discount Package C

(Available on Spirit LE and Spirit ES)



Includes the contents of Power Equipment Discount Package (dual heated power remote mirrors, power door locks, power windows) and air conditioning.

### Deluxe Convenience Discount Package

(Available on Spirit only.)

It includes six-position tilt steering column, electronic speed control, color-keyed front and rear carpeted floor mats, ignition switch light with time-delay.

### Premium Equipment Discount Package

(Available on Spirit only.)



It includes split fold-down rear seatback; Premium Light Package with cigar lighter light, under-instrument-panel-mounted courtesy light, roof-mounted map light, ignition switch light with time-delay, and underhood light; premium body sound insulation; graphic message center with warning lights for headlight "out," low windshield washer fluid, stoplight "out," taillight "out," trunk lid ajar, door ajar. Also includes armrest mounted on standard console (available with bucket seats only; includes dual cup holders for rear seat passengers).

### Power Equipment Discount Package

(Available on Spirit, Spirit LE, and Spirit ES. Air conditioning required. Popular Equipment Discount Package required on Spirit.)



It includes dual heated power remote control black mirrors, power door locks, power windows

### Popular Equipment Discount Package



(Available on Spirit only), it includes air conditioning with manual temperature control and bi-level ventilation, electric rear window defroster (required on all passenger cars registered in New York state), tinted glass in all windows, two additional rear-door-mounted coaxial speakers.

## Available Options

Many options can be ordered separately to meet your driving needs. They include:

### Sunroof



(Available on all models. Popular Equipment Discount Package required on Spirit.) Bring the outdoors in with this removable tinted glass sunroof. Raise the rear edge to adjust ventilation to your own comfort level. Interior color sunshade included.

### Power Seat-Left 50/50 or Driver-Side Bucket

(Requires Popular Equipment Discount Package on Spirit.)



There is a six-way power adjustable 50/50 seat (left only) or driver-side bucket. A power seat is especially convenient when two or more people drive the same car. Three switches on the left side of the driver's seat control all six seat adjustments. The front switch tilts the front of the seat up and down; the rear switch tilts the rear of the seat up and down; and the center switch moves the whole seat up and down, and forward and rearward in the direction the switch is moved.

### Air Conditioning

Electronically controlled air conditioning features a high-capacity, low-noise fan and bi-level ventilation. A recirculation setting bypasses hot outside air for an extra-quick cool down.



## Standard and Optional Equipment

	Spirit ES		
	Spirit LE		Spirit
	S	S	
Acoustical Package—Insulation, body-sound	S	S	S
Acoustical Package—Premium, body-sound	P	S	S
Air Conditioning <sup>(1)</sup> —Manual temperature control, bi-level ventilation	P	E	E
Air Exhausters—Body	S	S	S
Armrests—Door-mounted, 2 front, 2 rear	S	S	S
Armrest—Center console-mounted, includes dual cup holders for rear passengers	P	S	S
Battery—500-ampere; maintenance-free with integral test indicator	S	S	S
Brakes—Dual-diagonal, disc front, self-adjusting drum rear, power-assisted	S	S	NA
Brakes—Dual-diagonal, four-wheel disc, power-assisted	NA	NA	S
Bumpers—Double-protection, color-keyed with protective rub strips	S	S	S
Carpeting—Passenger compartment; color-keyed	S	NA	NA
Carpeting—Premium low pile; color-keyed	NA	S	S
Chimes—Warning, fasten seat belt, key-in-ignition, headlights-on	S	S	S
Clock—Electronic digital; integral with radio	S	S	S
Console—Full floor with covered bin, cup holders, coin holder, cassette storage and garage door opener storage	S	S	S
Corrosion Protection—Extensive use of galvanized steel	S	S	S
Cubby Bin—Open, located in instrument panel	S	NA	NA
Deck Lid Release—Remote control; cable operated with defeat mechanism located in the trunk	S	S	S
Defroster—Rear window, electric (required on all passenger vehicles registered in New York state)	E	S	S
Directional Signals with Lane-Change Feature	S	S	S
Door Locks—Power	E	E	E
Electronic Ignition, Voltage Regulator and Fuel Injection	S	S	S
Emission Controls and Testing—Required on all vehicles registered in California; not available otherwise	E	E	E
Exhaust System—Stainless Pentasteel	S	S	S
Floor Mats—Carpeted front and rear	P	S	S
Fog Lights—Integral in front fascia	NA	S	S
Front-Wheel Drive	S	S	S
Fuel Filler Cap—Tethered	S	S	S
Fuel Filler Door Release—Remote control; cable operated with override located in the trunk	S	S	S
Fuel Tank—With curbside fuel filler door; 16-gallon	S	S	S
Glass—Tinted; all	P	S	S
Glass—Tinted; rear only	S	NA	NA
Glove Box—Lockable; includes storage for cassette tapes	S	S	S
Head Restraints—Front, adjustable (2-way)	S	S	S
Heater and Defroster—bi-level ventilation and side window demisters	S	S	S
Hood—Counterbalanced, inside hood release	S	S	S
Instrument Cluster—Electric analog speedometer with secondary metric scale; electromechanical tachometer, odometer, trip odometer; gauges for oil pressure, engine coolant temperature, voltmeter and fuel level; warning lights for fasten seat belts, air bag, parking brake on, brake system failure, check engine, low fuel, low oil pressure and check gauges	S	S	S
Key—Reversible; double-bit with valet feature	S	S	S
Lights—Ash receiver, dome, glove box, switches, front and rear door for dome light, trunk	S	S	S
Lights—Cigar lighter, courtesy; mounted under instrument panel, ignition switch with time delay, map/reading, underhood	P	S	S
Lock—Rear door; inside, childproof	S	S	S
Message Center—Graphic; includes warning lights for low windshield washer fluid, trunk lid ajar, door ajar, headlight out, taillight out and stoplight out	P	S	S
Mini Traveler Trip Computer—Includes trip odometer, distance to empty, average and instant miles per gallon, elapsed time and U.S. or metric readout	NA	NA	S
Mirrors—Outside, dual remote control; black. Rearview; inside day/night	S	S	S
Moldings—Bodyside bumper protective rub strip extensions—body colored; bodyside, medium width—body color with silkscreen "Turbo" badging; when applicable sill, front and rear ground effects—body color	NA	S	S
Moldings—Bodyside bumper protective rub strip extensions; wide, grooved—Charcoal with bright edge (Taupe with bright edge with Light Taupe exterior color)	S	NA	NA
Multifunction Control Lever—Mounted on the steering column; includes controls for turn signals with lane change feature, windshield wiper/washer, headlight dimmer and day/night flash/pass feature, pulse wipe feature	S	S	S

	Spirit ES		
	Spirit LE		Spirit
	S	S	
Radio—AM stereo <sup>(2)</sup> and FM stereo radio, electronically tuned; Dynamic Noise Reduction <sup>(3)</sup> ; includes four coaxial speakers on Spirit LE, two front coaxial speakers on Spirit; integral digital clock	S	S	NA
Radio—AM stereo <sup>(2)</sup> and FM stereo radio, electronically tuned; Dynamic Noise Reduction <sup>(3)</sup> ; cassette tape player with auto reverse includes four coaxial speakers, instruction/demonstration tape with musical selections and dry-type head cleaner, integral with tape leader; integral digital clock	E	E	S
Radio—"Chrysler Infinity I Sound System," AM stereo <sup>(2)</sup> and FM stereo radio, electronically tuned; with memory scan, up-and-down seek-and-scan, Dynamic Noise Reduction <sup>(3)</sup> ; electronic cassette tape player with auto reverse, true fast forward and rewind, automatic metal tape sensor, tape program music search; Dolby B <sup>(4)</sup> Noise Reduction; "joystick" balance/fader speaker control and Chrysler Infinity vehicle-equalized four coaxial speaker system and includes instruction/demonstration tape with musical selections and dry-type head cleaner, integral with tape leader; integral digital clock	E <sup>(5)</sup>	E	E
Radio—"Chrysler Infinity II Sound System," AM stereo <sup>(2)</sup> and FM stereo; electronically tuned; with memory scan, up-and-down seek-and-scan, Dynamic Noise Reduction <sup>(3)</sup> ; electronic cassette tape player with auto reverse, true fast forward and rewind, automatic metal tape sensor, tape program music search; Dolby B <sup>(4)</sup> Noise Reduction; 5-band electronic graphic equalizer, "joystick" balance/fader speaker control and Chrysler Infinity vehicle-equalized four coaxial speaker system includes instruction/demonstration tape with musical selections and dry-type head cleaner, integral with tape leader; integral digital clock	NA	E	E
Seat—Power, left side of 50/50 split bench or driver-side bucket	E <sup>(5)</sup>	E	E
Seat Belts—Color-keyed, Unibelt with automatic retractor on front and rear outboard seats; lap belts at all other positions	S	S	S
Speed Control—Electronic	P	S	S
Steering Column—Tilt	P	S	S
Steering—Power-assisted, rack-and-pinion, fast ratio (14:1) precision-feel	S	S	S
Steering Wheel—Luxury with air bag	S	NA	NA
Steering Wheel—Luxury with air bag and speed control	P	S	NA
Steering Wheel—Luxury leather-wrapped with air bag and speed control	NA	NA	S
Stripes—Paint, bodyside and deck lid	NA	S	S
Stripes—Paint, bodyside	S	NA	NA
Sunroof—Removable, flip-up; includes air deflector, removable sun shade, vinyl storage bag, cargo compartment lie-down straps and roof-mounted map light	E <sup>(5)</sup>	E	E
Sun Visor—Dual vanity mirrors with sliding cover	S	NA	NA
Sun Visor—Dual vanity mirrors; illuminated	NA	S	S
Suspension—Sport handling; front; high control gas-charged position-sensitive struts, high control performance-tuned springs and solid antisway bar	S	S	S
Suspension—Sport handling; rear; beam axle with trailing arms and high control gas-charged shock absorbers, high control performance-tuned coil springs and large antisway bar	S	S	S
Tires—Spare; compact, limited service T125/70D14	S	S	S
Tires—Spare; conventional 14" only	E	E	NA
Tires—P195/70R14 steel-belted radial all-season touring tread design black sidewalls (set of 4)	S	S	NA
Tires—P195/70R14 steel-belted radial all-season touring tread design white sidewalls (set of 4)	E	NA	NA
Tires—P205/60R15 steel-belted radial all-season performance tread design low black letters (set of 4)	E	E	S
Trunk Floor and Sidewall Carpet	S	S	S
Urethane Protective Coating—Lower body	S	S	S
Wheel Covers—Luxury; 14-inch (set of four)	S	NA	NA
Wheel Covers—Venturi; 14-inch (set of four)	NA	S	NA
Wheels—Cast aluminum; 15-inch; White with White exterior on Spirit ES only (set of four)	E	E	S
Windshield Wipers—Deluxe; variable intermittent wipe feature	S	S	S

S—Standard. NA—Not available. NC—No-charge option. E—Extra cost. P—Package only.

<sup>(1)</sup>There are special engine cooling requirements for field-installed air conditioning. Failure to follow these requirements may invalidate warranty. See your dealer for details.

<sup>(2)</sup>Some AM stereo broadcasting may not be compatible with this radio.

<sup>(3)</sup>Dynamic Noise Reduction is a trademark of National Semiconductor Corporation.

<sup>(4)</sup>Dolby B is a trademark of Dolby Laboratories.

<sup>(5)</sup>Popular Equipment Discount Package required.

## Color Combinations

Exterior Paint Color	Models			Interior Trim Color
	Spirit	Spirit LE	Spirit ES	
Black—Clear Coat PX8	X	X	X	Bordeaux Taupe Medium Quartz
Black Cherry—Pearl Coat PM9	X	X		Bordeaux
Diamond Blue Metallic—Clear Coat PC1	X			Twilight Blue
Twilight Blue—Pearl Coat* PC7	X	X		Twilight Blue
Dark Quartz Gray Metallic—Clear Coat PD8	X	X		Medium Quartz
Claret Red—Pearl Coat* PM4	X	X	X	Bordeaux Medium Quartz
Platinum Silver Metallic—Clear Coat* PD1	X	X	X	Medium Quartz
Light Taupe Metallic—Clear Coat PL3	X	X		Taupe
Bright White—Clear Coat PW7	X X X X	X X X X	X X X X	Bordeaux Twilight Blue Taupe Medium Quartz

\*Extra cost.

## Standard Safety Features

- Antitheft trunk lock
- Brake fluid pressure loss warning light (also serves as parking brake indicator)
- Childproof inside rear door locks
- Combination lap/shoulder belts for the driver, right front passenger, and outside rear passengers; lap belts for all others
- Dual diagonal braking system with separate brake fluid reservoirs in the master cylinder
- Dual throttle return springs
- Driver-only air bag passive restraint system mounted in the steering wheel
- Energy-absorbing front seat-backs
- Energy-absorbing instrument panel and sun visors
- Energy-absorbing steering column and steering wheel
- Fade-resistant front vented disc brakes
- Front seat head restraints
- Hazard warning flasher system
- Ignition and steering column lock
- Impact-actuated fuel supply shutdown relay
- Interlocking door latches
- Non-override door locks (except driver's door)
- Provisions for rear child seat tether
- Reinforced windshield header and roof
- Resilient window crank knobs
- Safety glass
- Safety-Rim wheels
- Seat belt reminder system
- Side door beams
- Side marker lights and/or reflectors
- Supplemental center-mounted stoplight
- Turn signals with lane change feature and flashing front side marker lights



## Wheels and wheel covers (set of four):

- A) 15" "Euro Cast" aluminum wheels in white
- B) 15" "Euro Cast" aluminum wheels
- C) 14" Venturi wheel cover
- D) 14" Luxury wheel cover Standard-Spirit.



## Interior Trim

**Standard—Spirit**  
Austin/Classic cloth low-back front bucket seats. The rear bench seat has a fixed back\*§



**Optional—Spirit**  
Austin/Classic cloth 50/50 adjustable front bench seats. The rear bench seat has a fixed back\*§



**Standard—Spirit LE**  
Apollo cloth premium low-back front bucket seats with driver-side lumbar support. The rear bench seat features a 55/45 split fold-down back.



**Optional—Spirit LE**  
Apollo cloth premium 50/50 adjustable front bench seats with driver-side lumbar support. The rear bench seat features a 55/45 split fold-down back. §



**Standard—Spirit ES**  
Paragon/Gibson cloth premium low-back front bucket seats with driver-side lumbar support. The rear bench seat features a 55/45 split fold-down back.



\*A 55/45 split fold-down rear seatback is available in the optional Premium Equipment Discount Package.  
§Column-mounted shifter replaces console-mounted shifter and console. Includes instrument panel-mounted cup holders/ashtray.

## Dodge Spirit Dimensions

Wheelbase	103.3"
Overall Length	181.2"
Overall Width	67.3"
Overall Height	53.5"
Track—Front	57.6"
Track—Rear	57.2"
Head Room—Front	38.4"
Head Room—Rear	37.9"
Leg Room—Front (maximum)	41.9"
Leg Room—Rear (minimum)	38.3"
Shoulder Room—Front	54.3"
Shoulder Room—Rear	55.0"
Hip Room—Front	51.7"
Hip Room—Rear	52.0"

## Consider Leasing.

Many of today's new car prospects are wisely considering leasing as an alternative to buying. Leasing a new Dodge Spirit usually involves a small security deposit and a first month's lease payment. Monthly payments are usually less than financing a new car purchase. Ask your dealer for details.

## 7/70 Power Train Limited Warranty

Upon expiration of the basic 12-month or 12,000-mile limited warranty, coverage is extended on power train components to seven years or 70,000 miles. A deductible applies. See your dealer for a copy of the warranty.

Certain models, packages, and options are subject to specific restrictions, requirements, or late availability. See your dealer for the latest ordering information.

**Buckle Up For Safety.**



Spirit interior shown above in Twilight Blue

## Spirit Power Trains<sup>(1)</sup>

Type	Displacement	Bore & Stroke	Compression Ratio	Horsepower		Torque	Transaxle Availability
				SAE Net @ RPM			
Four-cylinder OHC single-point electronic fuel injection: standard Spirit and Spirit LE	2.5-liter (153 CID)	3.44" x 4.09"	8.9:1	100 hp @ 4,800	135 lb-ft @ 2,800		Five-speed close-ratio manual overdrive (2.51 OTGR): standard Spirit and Spirit LE Three-speed automatic <sup>(2)</sup> (3.02 OTGR): optional Spirit and Spirit LE
Four-cylinder OHC multipoint fuel injection Turbo <sup>(3)</sup> : standard Spirit ES; optional Spirit <sup>(4)</sup> and Spirit LE	2.5-liter (153 CID)	3.44" x 4.09"	7.8:1	150 hp @ 4,800	160 lb-ft @ 2,000		Five-speed close-ratio manual overdrive (2.51 OTGR): standard on Spirit ES optional on Spirit and Spirit LE Three-speed automatic (3.02 OTGR): optional on all Spirit models
V6 OHC multipoint fuel injection <sup>(5)</sup> : optional on all Spirits	3.0-liter (181.4 CID)	3.59" x 2.99"	8.9:1	141 hp @ 5,000	171 lb-ft @ 2,800		Electronic four-speed automatic <sup>(6)</sup> (2.36 OTGR): optional on all Spirits

<sup>(1)</sup>NAE emissions control required on all vehicles in California. Not available otherwise. <sup>(2)</sup>Includes electromechanical lockup torque converter.

<sup>(3)</sup>Premium unleaded fuel recommended. Turbocharged engines are not recommended for trailer towing and such use may invalidate warranty.

<sup>(4)</sup>Requires Popular Equipment Discount Package, Code AAM, on Spirit. <sup>(5)</sup>Manufactured by Mitsubishi Motors Corporation.

<sup>(6)</sup>Includes electronically controlled lockup torque converter. OTGR = Overall top gear ratio.

## Exterior Paint Colors



<sup>†</sup>Not available on Spirit ES. <sup>††</sup>Extra cost. <sup>†††</sup>Not available on Spirit LE.

Clear Coat finish is standard on every 1990 passenger car built by Chrysler Motors. Due to printing limitations, the colors shown will vary slightly from actual hues. See your Dodge dealer for accurate color chips.

## Chrysler Credit Financing

Chrysler Credit offers a variety of finance programs that will help make your new Dodge even more affordable. These special finance and leasing programs are designed to meet the needs of today's automotive buyer. They include Gold Key Lease, America's Choice Payment Plan, College Graduate Plans, Retail Financing, and more. Ask your salesperson for details.

## Chrysler Purchase Assistance Program for the Physically Challenged

Cash reimbursements of up to \$500 are available for qualified adaptive driving devices on 1990 Chrysler Motors cars and trucks. For further information, contact your dealer or the PHYSICALLY CHALLENGED RESOURCE CENTER at 1-800-255-9877.

## 7/100 Anticorrosion Limited Warranty

Your dealer will repair or replace at no charge outer body sheet metal panels found to have developed perforation (rust-through) in normal use up to seven years or 100,000 miles. See your dealer for a copy of the warranty.

## Optional Service Contract Coverage

Chrysler Service Contracts provide you with additional peace-of-mind protection for your new vehicle. Chrysler Motors offers a variety of plans to meet your needs. Plan coverage begins after your vehicle's basic warranty expires. A deductible applies. Allowances for car rental and towing are also included.

All product illustrations and specifications are based on current information at the time of publication approval. Although descriptions are believed correct, accuracy cannot be guaranteed. Chrysler Motors reserves the right to make changes from time to time, without notice or obligation, in prices, specifications, colors and materials, and to change or discontinue models. See your dealer for the latest information.



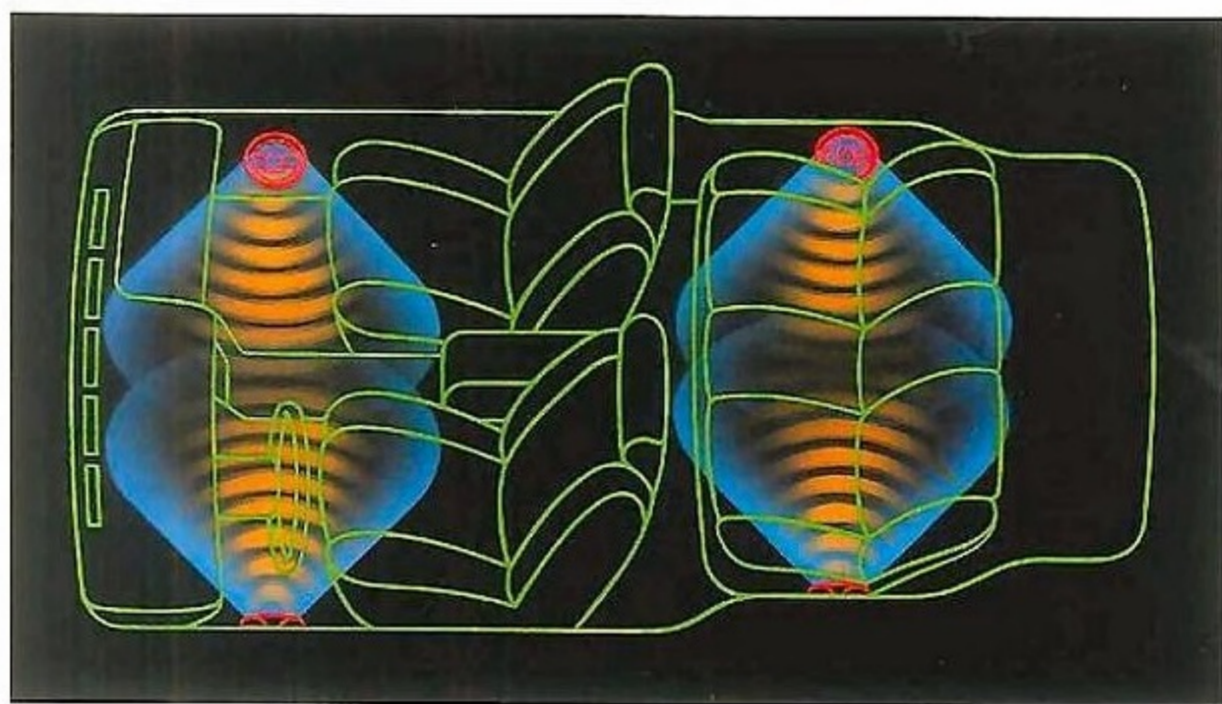
Farm No. 81-205-0253 8/89 (275M) Litho in U.S.A.

MOPAR parts are engineered by Chrysler Motors for use in your new Dodge Spirit. When replacement is necessary, be sure to specify MOPAR parts. Used by professional mechanics all over the world.





Spirit shown above is in Twilight Blue.



#### Infinity Speaker System

High frequency tweeters provide sound clarity, while woofers add maximum sound projection and consistency.

Rear speakers with coaxially mounted woofers and dome-shaped tweeters, assure clear and balanced sound reproduction at all frequencies.

#### Chrysler Infinity I Sound System (Requires Popular Equipment Discount Package on Spirit)



AM stereo\* and FM stereo electronically tuned radio with memory scan, up-and-down seek-and-scan, Dynamic Noise Reduction;† electronic cassette tape player with auto reverse, true fast forward and rewind, automatic metal tape sensor, tape program music search, Dolby B‡ Noise Reduction; joystick balance/fader speaker control; Chrysler Infinity vehicle equalized four coaxial speaker system and integral digital clock.

#### Sounds of Pleasure

##### AM Stereo\*/FM Stereo Radio



AM Stereo\* and FM Stereo electronically tuned radio with Dynamic Noise Reduction;† bass/treble slide control, four coaxial speakers on LE, two coaxial speakers on Spirit, and integral digital clock.

##### AM Stereo\*/FM Stereo Radio with Cassette



Standard on Spirit ES, available on Spirit and Spirit LE. AM stereo\* and FM stereo radio, electronically tuned, with Dynamic Noise Reduction;† cassette tape player with auto reverse, and locking fast forward and rewind; bass/treble slide control; four coaxial speaker system and integral digital clock.

\*Some AM stereo broadcasting may not be compatible with this radio.

†Dynamic Noise Reduction is a trademark of National Semiconductor Corporation.

‡Dolby B is a trademark of Dolby Laboratories.

#### Chrysler Infinity II Sound System (Available on Spirit LE and ES.)



It includes AM stereo\*/FM stereo radio, electronically tuned; with Dynamic Noise Reduction;† electronic cassette tape player with automatic reverse, true fast forward and rewind, automatic metal tape sensor, tape program music search, Dolby B‡ Noise Reduction; five-band electronic graphic equalizer; joystick balance/fader speaker control; Chrysler Infinity vehicle equalized four coaxial speaker system and integral digital clock.





*"Everybody today talks about building a better America, but to do that somebody has to dare to be different.*

*In the automotive industry, however, one division has consistently been the first to go where no others have gone before...all in the attempt to build a better automobile. That division is Dodge, the performance division of Chrysler Motors.*

*It was Dodge that was first to marry front-wheel drive technology to turbocharged engine technology. It was Dodge that was the first to back the quality of its cars with a 7/70 Protection Plan. It was Dodge that first developed a fully adaptive electronic automatic transaxle and now the first to equip a passenger vehicle with a variable nozzle turbocharger. As we enter the final decade of this century with a wide variety of new technologies and an obsession to be number one in customer satisfaction, Dodge will continue to shatter old ideas, establish new standards, and dare to be different.*

*Is it any wonder then that Dodge has become the fastest growing car and truck division in America?"*

*Lee A. Iacocca*



**THE NEW SPIRIT  
OF DODGE**

THE PERFORMANCE DIVISION OF CHRYSLER MOTORS