

MERCURY MOUNTAINEER 1999





# It's where you want to go that matters.

You definitely have your own agenda. And you're certainly not willing to let anything get in your way. Not eight inches of snow. A torrential downpour. Or a chuckhole-laden road. So it's a necessity for you to have a vehicle that'll get you where you're headed. Your Mountaineer has a smooth ride and comes with plenty of reassuring and innovative features. So you can easily handle whatever life has to dish out.



















Room to accommodate your sense of adventure.



You need a Sport Utility Vehicle that's v

capable. Well, that's a given with

Mountaineer. What's more important t

you is being comfortable. This is wher

Mountaineer really stands out. Here's th

kind of refined interior you'll appreciat

With great features like a leather-wrap

steering wheel with fingertip speed co

height-adjustable front safety belts and

illuminated entry system. Add availabl

leather seating surfaces and it's even m

comfortable. Its 60/40 split fold-down

seat, luggage rack and plenty of cargo s

make it very adaptable as well. So fill e

and go to town. Or country. Or whe

the spirit moves you.



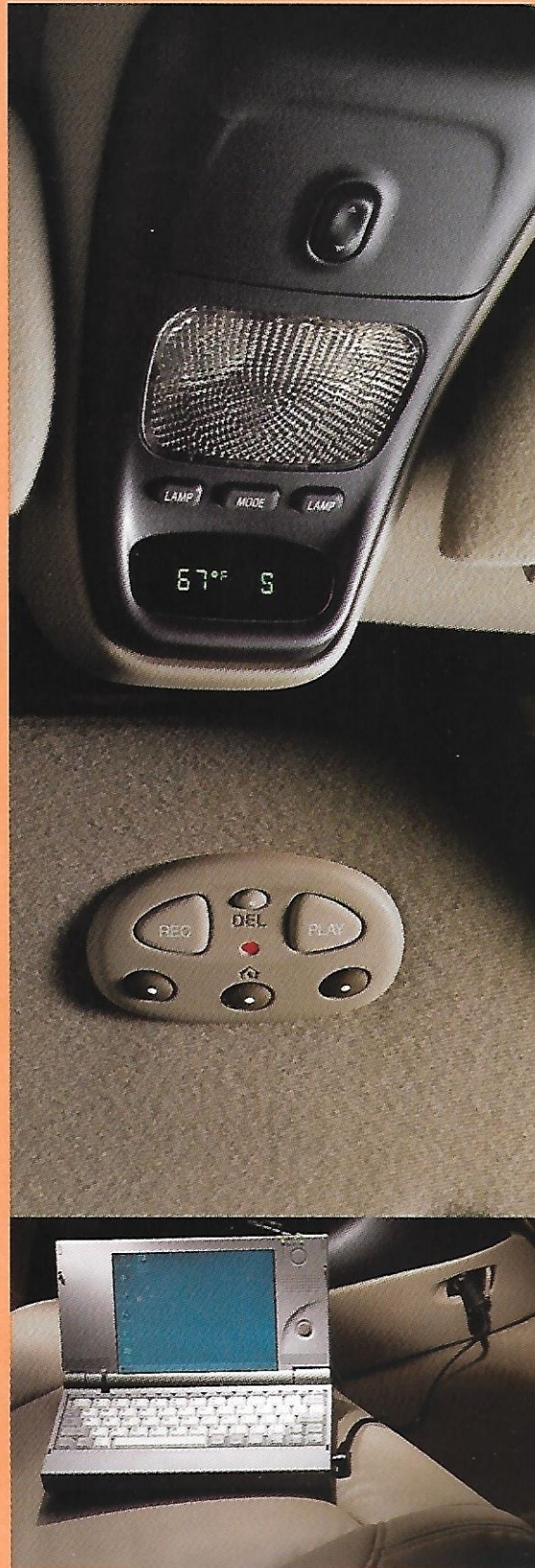
# Get the MAX out of you

Take a look up. There's your available overhead console with outside temperature and compass display, second-row reading lamps/dome light and storage bin.

For the ultimate in convenience, equip your Mountaineer with the optional TravelNote® digital memo recorder with HomeLink® universal garage door opener. HomeLink can operate your gate, garage door and more. A great idea come to you while you're driving? TravelNote records up to three minutes worth of messages.

Need to use a computer, cell phone or other electronic devices? No problem. You'll find a second 12-volt power point comes standard.

Of course, you'll want to bring your favorite discs along for the ride. So go for the optional 6-disc CD changer. What





V.

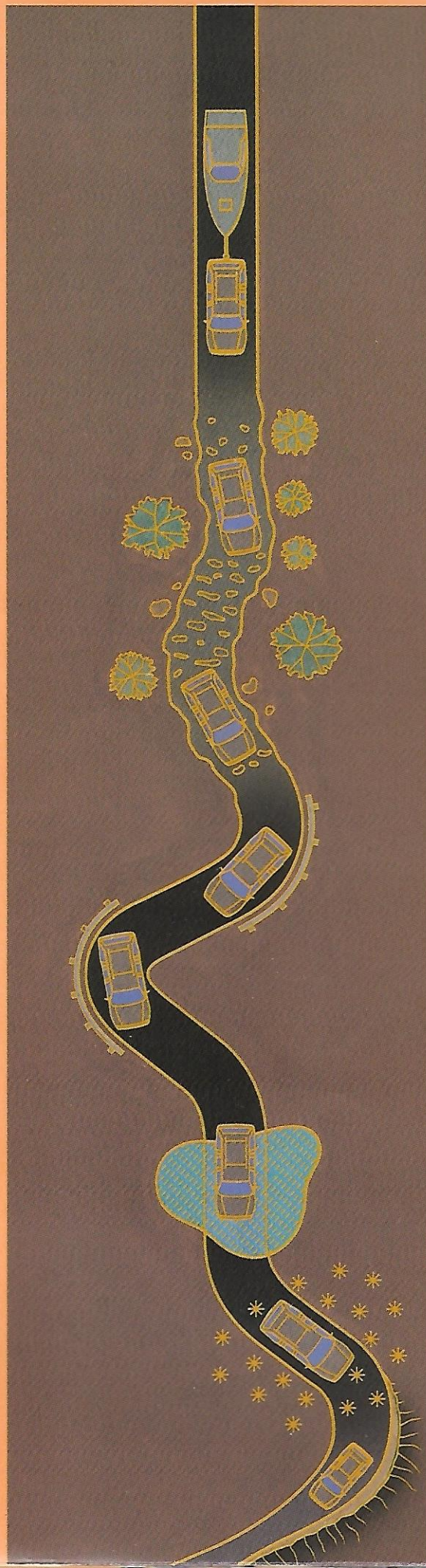


STONE









Mountaineer comes with an advanced Single Overhead Camshaft (SOHC) 4-liter V-6 engine with a 5-speed electronically controlled automatic transmission and the kind of towing power you need. If you want even more power, you may want to opt for the available 5.0-liter V-8.

The smooth, comfortable ride is due to the Short- and Long-Arm (SLA) front suspension which lets each front wheel react independently over rough surfaces.

Mountaineer is just plain easy to steer thanks to its responsive power rack-and-pinion steering system.

The V-6 engine is available with the 4-wheel Control-Trac system and the V-8 is available with full-time, hassle-free All-Wheel Drive with no buttons to push or switches to turn. So you can get through mud, rain, sleet and snow without a worry.

You'll appreciate overdrive lockout when you're towing a trailer in heavy traffic.



an open just the window or the entire

ractable cargo cover pulls out to keep

ge safely out of sight.

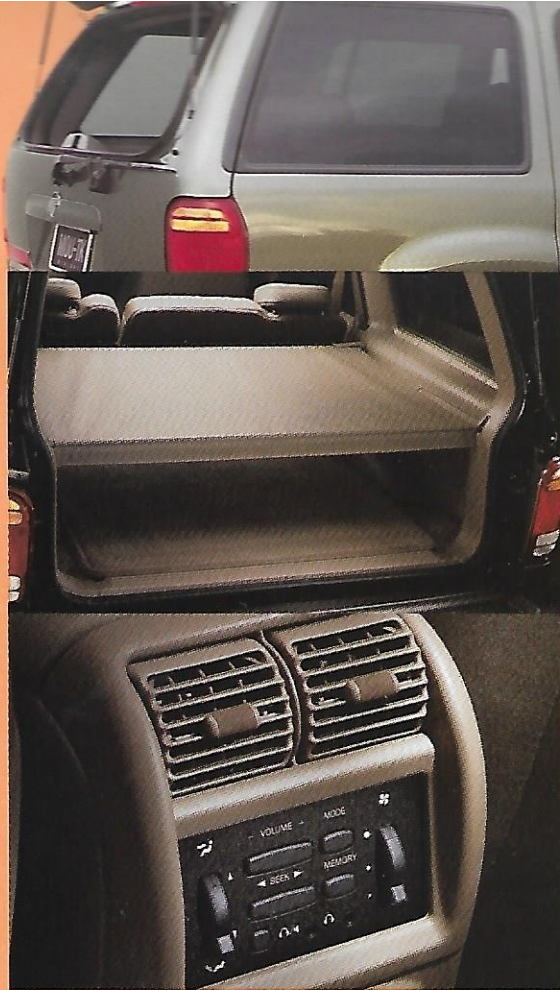
the optional High-Series floor console,

ate fan and audio controls are provided

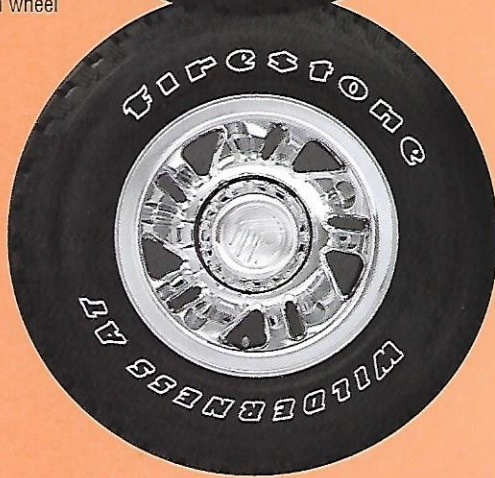
ar passengers. The Personal Audio

m lets them listen to something differ-

rough headphones (not included).



cast aluminum deep dish wheel



bright chrome steel wheel (Appearance Package only)



Tracer



Mystique



Cougar



Sable



Grand Marquis



Villager



Mountaineer





ENGINE	V-6	V-8
Type	SOHC V-6	OHV V-8
Displacement	4.0 liters	5.0 liters
Horsepower (SAE net)	210 @ 5250 rpm	215 @ 4200 rpm
Torque (lbs.-ft. SAE net)	240 @ 3250 rpm	288 @ 3300 rpm
Fuel delivery	Sequential multi-port electronic fuel injection with EEC-V computer	Sequential multi-port electronic fuel injection with EEC-V computer
<b>TRANSMISSION</b>		
Type	Five-speed electronic automatic overdrive with overdrive lockout switch	Four-speed electronic automatic overdrive with overdrive lockout switch
<b>CHASSIS</b>		
Drivetrain	4x2 or 4x4 Control-Trac	4x2 or full-time All-Wheel Drive (AWD)
Frame	Ladder-type, single channel with six crossmembers	Ladder-type, single channel with six crossmembers
<b>BRAKES</b>		
Power-assisted 4-wheel disc Anti-lock Brake System (ABS)		
<b>SUSPENSION</b>		
Front	Independent Short- and Long-Arm (SLA), computer-selected torsion bar, nitrogen gas-pressurized shock absorbers, stabilizer bar	
Rear	Semi-floating type axle with 3.55 axle, 2-stage variable-rate computer-selected leaf springs, nitrogen gas-pressurized shock absorbers, stabilizer bar	Semi-floating type axle with limited-slip 3.73 performance axle (includes Trailer Tow Prep Pkg.), 2-stage variable-rate computer-selected leaf springs, nitrogen gas-pressurized shock absorbers, stabilizer bar
<b>STEERING</b>		
Power-assisted rack-and-pinion; 17:1 ratio; turning diameter 37.3 ft. (curb-to-curb)		
<b>CAPACITIES</b>		
Fuel tank	21.0 gal.	
Cargo volume (cu. ft.) with rear seat up	43.5	
Cargo volume (cu. ft.) with rear seat down	80.2	

#### DIMENSIONS (IN INCHES)

Wheelbase	111.6	Axle clearance
Length	190.1	Headroom, front/rear
Width	70.2	Legroom, front/rear
Height (4x2/4x4)	70.5/70.3	Shoulder room, front/rear
Track, front/rear	58.5/58.5	Hiproom, front/rear
Overhang, front/rear	33.9/44.0	

#### TOWING CAPACITIES

POWERTRAIN	DRIVETRAIN	AXLE RATIO**	MAX T
V-6	4x2	3.55/3.73	4,500
V-6	Control-Trac	3.55/3.73	4,500
V-8	4x2	3.73	
V-8	AWD	3.73	

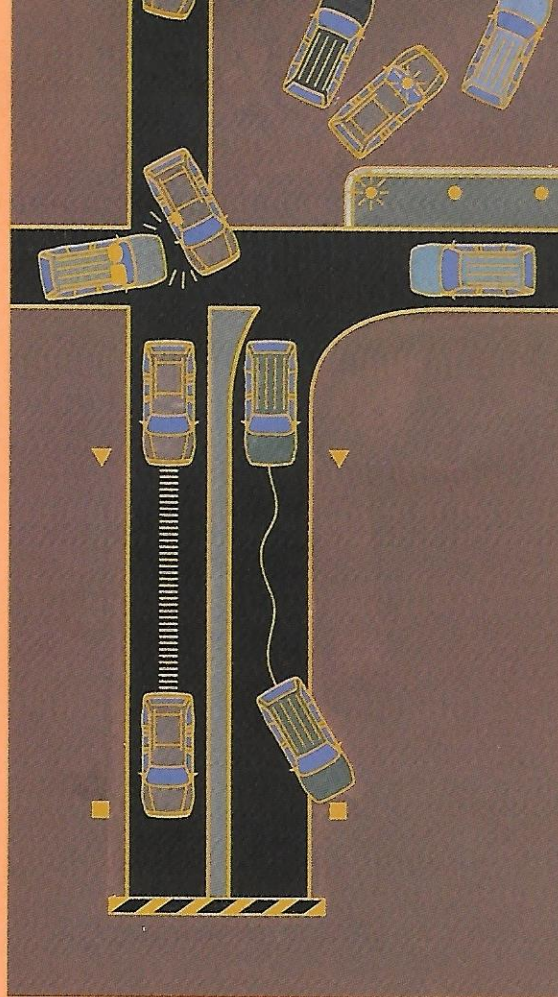
#### FUNCTIONAL FEATURES

Second Generation dual air bags	STD
Side air bags	OPT
100,000-mile scheduled tune-up intervals***	STD
Brake/shift interlock	STD
Battery saver	STD
SecuriLock™ passive anti-theft system	STD
Underbody-mounted full-size spare tire	STD
Speed-sensitive intermittent windshield wipers	STD
Solar tint glass on windshield and front door windows	STD
Privacy glass™ on rear quarter, rear door and liftgate windows	STD
Skid plates (with 4x4 and AWD only)	OPT
Full-time All-Wheel Drive (AWD) (V-8 only)	OPT
4x4 Control-Trac (V-6 only)	OPT
Engine block heater	OPT
Remote Keyless Entry system with 2 key fobs	GRP
3.73 limited-slip rear performance axle includes Trailer Tow Prep Pkg. (Std on V-8/Opt. on V-6)	









A new feature, Reverse Sensing System, is available. When you're backing up it detects objects and warns you of most objects within 5.9 feet.

Not only does Mountaineer come with Second Generation dual air bags, but side air bags are now available for an extra measure of safety. Always wear your seat belt and secure children in the rear seat.

Four-wheel disc ABS brakes come standard. They help maintain steering control while braking on most slippery road surfaces.

To make your vehicle even more versatile, many dealer-installed accessories are available including a handy cargo net, trailer hitch, cargo organizer, and several different roof racks to accommodate snowboards and bikes.

**CONVENIENCE GROUP**

Both sport bucket seats with 6-way power driver's seat  
 Remote Keyless Entry system with 2 key fobs  
 Premium AM/FM stereo/cassette/single CD player/Premium Sound System with Personal Audio System  
 Auto-dimming electrochromic rearview mirror with automatic on/delay off headlamps  
 Electronics Package includes: Driver's side keyless entry keypad, auto-lock/relock system and puddle lamps on outside mirrors  
 High-Series floor console includes: Rear fan/audio controls with telephone jacks, dual front and rear cup holders, tissue dispenser, flip-up armrest with storage and ash cup  
 Overhead console includes: Digital compass, outside temperature display, 2nd-row reading lamps with dome light and storage bin (bin deleted if ordered with power moonroof)

**LUXURY GROUP**

6-way power front sport bucket seats with leather seating surfaces  
 Appearance Package  
 BOSE® Audio System with Personal Audio System

**PRODUCT CHANGES**

Following publication of this brochure, certain changes in standard equipment, options, prices and the like, or product delays may have occurred which would not be included in these pages. Your Mercury dealer is your best source for up-to-date information. Lincoln Mercury reserves the right to change product specifications any time without incurring obligations.

—Standard Feature; OPT=Optional Feature; GRP=Included in Appearance Group; DLR=Dealer Installed Option.  
 Available with Appearance Package.

Engine/axle ratio combinations shown may not be available in all areas. All maximum trailer weights shown must be reduced by passenger and cargo weight in the towing vehicle. Additional equipment may be required. For specific information on recommended or required equipment and frontal area restrictions, see your dealer. Under normal driving conditions with routine fluid/filter changes.

EPA Statement: 1999 EPA mileage estimates were unavailable when this brochure was printed.

For more information on Mercury vehicles via the internet, visit [www.mercuryvehicles.com](http://www.mercuryvehicles.com)



All Mountaineers will be classified as Emissions Vehicles (LEVs), emitting lower smog forming emissions than passenger cars on the road today.



The Mercury Cycling Team is hitting the streets and will be participating in races from coast to coast. Look for the pro cycling team in your area.



Ford Credit provides the convenience of one-stop shopping with a simple-to-understand purchase. Carpet Lease programs available right at the dealer. For more information, ask your dealer for details or visit us on the web at [www.fordcredit.com](http://www.fordcredit.com)



Imagine a comprehensive program

dedicated to your complete satisfaction.

ROADSIDE ASSISTANCE

MERCURY VEHICLE LIMITED WARRANTY

MERCURY CUSTOMER ASSISTANCE CENTER

SPECIAL DELIVERY PROCESS

OWNER DELIVERY PROCESS

WHAT IS THE MERCURY COMMITMENT?

It is the extra comforts of ownership,  
exemplified in a comprehensive benefits  
package. It is the assurance that meeting your  
driving needs will always be our  
ultimate objective.

Ask your dealer for complete details and a copy  
of the limited warranty.

Imagine yourself in a Mercury 

LITHO IN USA (600K) 7-98 P-8817 Buckle up—*together we can save lives.*



50%  
TOTAL RECYCLED FIBER  
25% POST-CONSUMER WASTE

