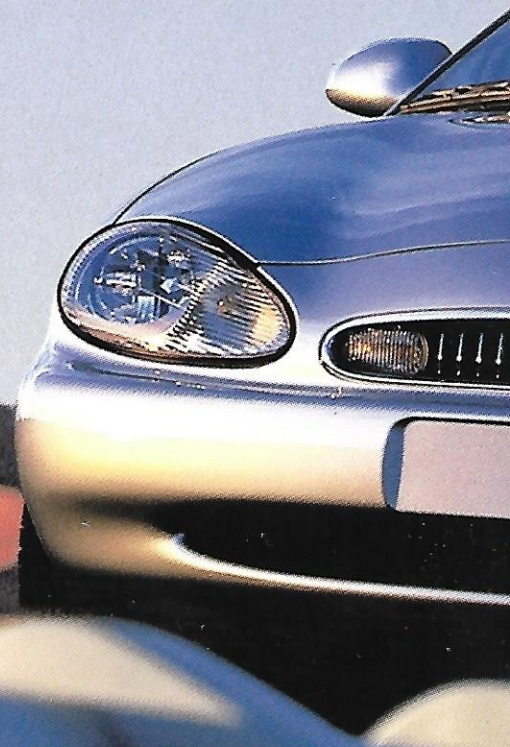


MERCURY SABLE



Style that rivals its spirit.

There seems to be a sameness among so many cars on the road these days. Cars that practically blend into the landscape. There is one, however, that stands alone. Mercury Sable. Its styling is unlike anything else out there. Sleek. Distinctive. Confident. With an expressive individuality and a spirited sense of adventure. Hmm...that kind of sounds like you, doesn't it? Perhaps that's why you are so attracted to each other.







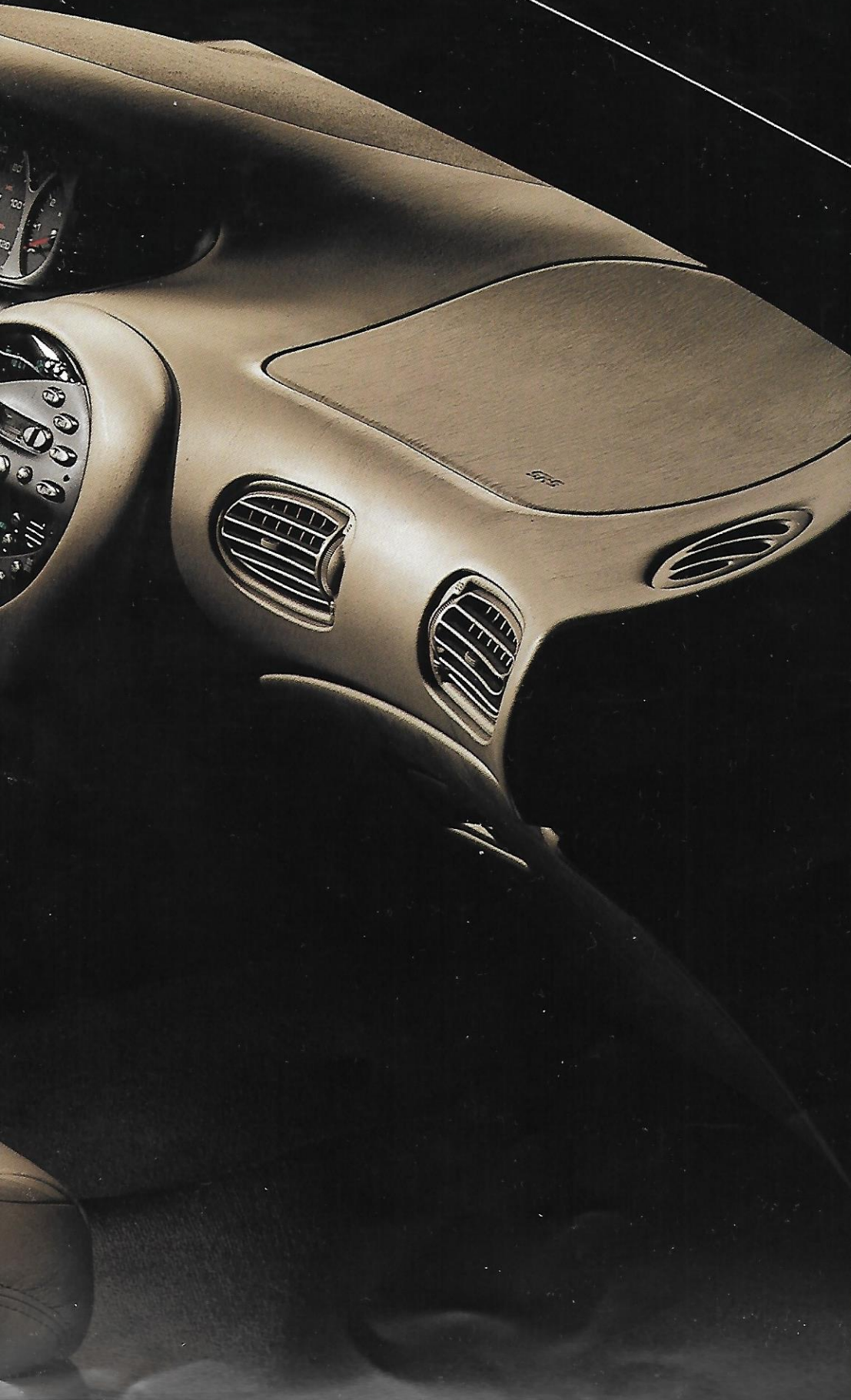
MERCURY

SBL-AG
MERCURY





A space filled with imagination.



Here's a vehicle designed for people on

For entertaining. Running errands. We

trips out of town. Because inside Sable

not only find the kind of room you need

a space that easily adapts to your unpre

dictable lifestyle. Power windows and

rear seat heat ducts and an available flir

front center console are just a few of t

features to accommodate you, your fri

and family. And since Sable comes in y

choice of five or six passenger seating a

sedan or wagon models, the possibili

seemingly endless.

Dull and boring is clearly not

is an abundance of innovative features

ke it one very adaptable and accom-

g vehicle. For starters, there's an

e 60/40 split-fold rear seat — put it

and then fill 'er up with extra long and

ads. Things like skis, lumber — you

It'll fit.



able Remote Keyless Entry system

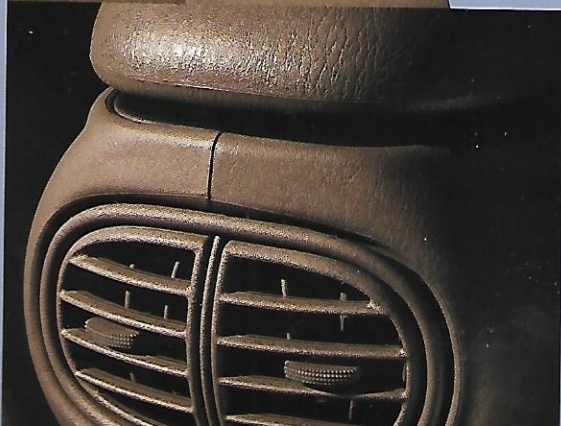
l unlocks all four doors, or just the

oor, and releases the trunk from

venient one — an available

p-fold center console that functions

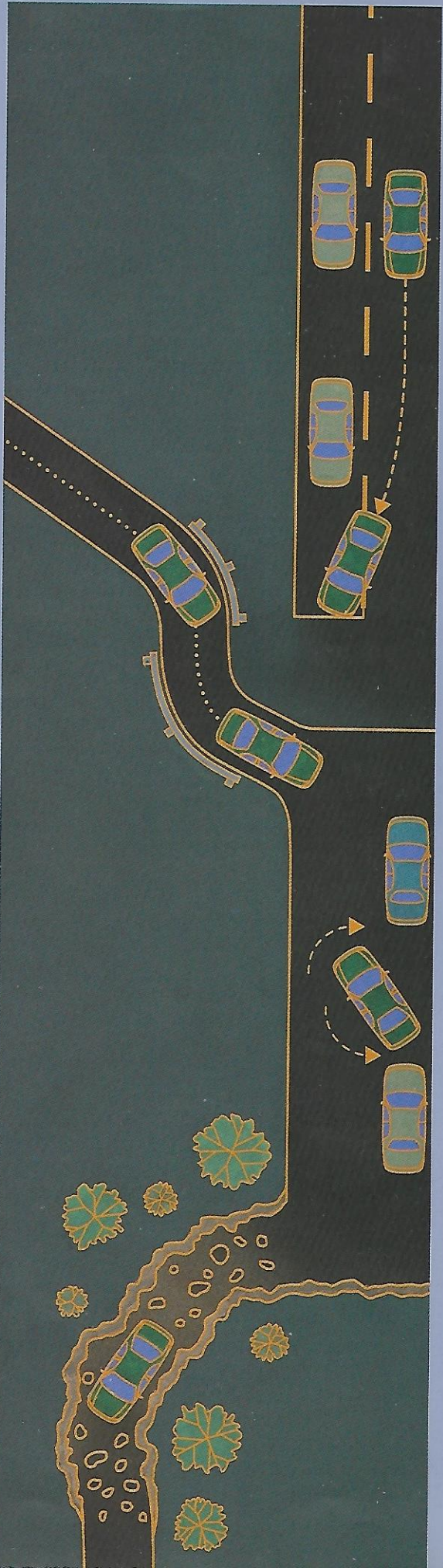
ositions



ption.







Sable offers you the power of choice:

advanced 200-hp 3.0L 24-valve DOHC

Duratec V-6 or a 3.0L OHV V-6. Both

teamed with a 4-speed electronically

controlled automatic overdrive transaxle

smooth, quiet performance.

Speed-sensitive, variable-assist power

rack-and-pinion steering puts you in control

Especially useful when parking in

tight spaces.

You'll appreciate the smooth yet firm ride

This is due to the advanced suspension

system. In front are independent MacPherson

struts. In the rear, the sedan features

independent Quadralink gas-pressurized

struts and the wagon comes with an independent

short- and long-arm rear suspension.

et warm.

Wagon has a rear cargo compartment

back. It provides extra storage space

can be covered to keep special items

out of sight.

ly rear-facing third seat, available on

models, can easily handle two

n, or fold it down to hold more cargo.

venient liftgate hatch separates so you

just the window or the entire lift-

pending on your needs.



15" deluxe
5-bolt
wheel cover



15" bright
aluminum
wheel



16" chrome
aluminum
wheel



ENGINES

| Type | V-6 OHV Vulcan | V-6 DOHC Duratec 24-valve |
|---------------------------|--|--|
| Displacement | 3.0 liters | 3.0 liters |
| Horsepower (SAE net) | 145 @ 5250 rpm | 200 @ 5750 rpm |
| Torque (lbs.-ft. SAE net) | 170 @ 3250 rpm | 200 @ 4500 rpm |
| Fuel delivery | Sequential multi-port electronic fuel injection | Sequential multi-port electronic fuel injection |
| Compression ratio | 9.3:1 | 10.0:1 |
| Engine control | EEC-V Electronic | EEC-V Electronic |

CAPACITIES

| | | |
|----------------|-----------|-----------|
| Fuel tank | 16.0 gal. | 16.0 gal. |
| Oil (w/filter) | 4.5 qts. | 5.5 qts. |

TRANSAXLES

Electronic 4-speed automatic with overdrive

BRAKES

| | SEDAN | WAGON |
|-------|----------------|----------------|
| Front | 10.9-inch disc | 10.9-inch disc |
| Rear | 8.9-inch drum | 10.1-inch disc |

STEERING

Speed-sensitive variable-assist power rack-and-pinion

SUSPENSION

Front—Independent MacPherson with gas-pressurized hydraulic struts and stabilizer bar
 Rear sedan—Independent Quadralink with gas-pressurized hydraulic struts
 Rear wagon—Independent short- and long-arm type with gas-pressurized hydraulic shock absorbers and progressive rate springs and stabilizer bar

DIMENSIONS (IN INCHES)

| | SEDAN | WAGON |
|----------------------|-----------|---------------------------------|
| Wheelbase | 108.5 | 108.5 |
| Cargo, cu. ft. | 16.0 | 38.4 (rear seat up)/81.3 (down) |
| Length | 199.7 | 199.1 |
| Height | 55.4 | 57.6 |
| Width | 73.0 | 73.0 |
| Headroom, front/rear | 39.4/36.6 | 39.3/38.9 |
| Ledroom, front/rear | 42.2/38.9 | 42.2/38.5 |



| FUNCTIONAL FEATURES | GS | LS | LS |
|--|--------------|--------------|--------------|
| | SEDAN | SEDAN | WAGON |
| Second Generation dual air bags | STD | STD | STD |
| 3.0L 24-valve Duratec V-6 engine with SecuriLock™ passive anti-theft system | OPT | OPT | OPT |
| 100,000-mile scheduled tune-up intervals* | STD | STD | STD |
| Rear door childproof safety locks | STD | STD | STD |
| Stainless steel extended-life exhaust system | STD | STD | STD |
| Solar tint glass | STD | STD | STD |
| Side front window demisters | STD | STD | STD |
| Rear window defroster | STD | STD | STD |
| Variable intermittent windshield wipers | STD | STD | STD |
| Height-adjustable 3-point lap/shoulder safety belts for outboard front occupants | STD | STD | STD |
| 3-point lap/shoulder safety belts for outboard rear occupants | STD | STD | STD |
| 3-point lap/shoulder safety belt for rear center occupant | STD | STD | |
| Load floor tie-down hooks | | | STD |
| Dual exhaust system (Duratec engine only) | OPT | OPT | OPT |
| Rear window wiper/washer | | | STD |
| EXTERIOR FEATURES | SEDAN | SEDAN | WAGON |
| 5-mph impact bumpers front/rear | STD | STD | STD |
| Dual power outside mirrors | STD | STD | STD |
| Multi-reflector halogen headlamps | STD | STD | STD |
| Body-color rocker panel moldings | STD | STD | STD |
| Aerodynamically styled luggage rack | | | STD |
| Rear liftgate with flip-up glass | | | STD |
| Remote Keyless Entry system with 2 key fobs | OPT | STD | STD |

| INTERIOR COMFORT AND CONVENIENCE FEATURES | GS | LS |
|--|--------------|--------------|
| | SEDAN | WAGON |
| CFC-free air conditioner | STD | STD |
| 60/40 split-fold rear seat | OPT | OPT |
| Fully trimmed luggage compartment with light | STD | STD |
| Power windows with illuminated controls one-touch down driver's window and accessory delay | STD | STD |
| Coin and cup holder trays | STD | STD |
| Rear-seat heat ducts | STD | STD |
| Battery saver | STD | STD |
| Integrated Control Panel with climate, audio, rear window defroster and digital clock controls | STD | STD |
| Power door locks with illuminated controls | STD | STD |
| Fingertip speed control with tap-up/tap-down feature | STD | STD |
| Dual visor mirrors | STD | STD |
| Woodgrain accent door trim panels | STD | STD |
| Cloth bucket seats | STD | STD |
| Cloth/leather-trimmed bucket seats | | |
| 6-way power driver's seat with power lumbar | | |
| 5-passenger seating with storage console/column shift | STD | STD |
| 5-passenger seating with dual recliners, rear seat air-conditioning ducts, front and rear armrests and floor console/woodgrain shifter | | |
| 6-passenger seating with dual recliners, flip-fold front center console, 2-way head restraints | | OPT |
| Tilt steering column | STD | STD |
| Leather-wrapped steering wheel | | |
| Light Group: courtesy lights, dual beam lamp, and dome map light | | OPT |

Light Group



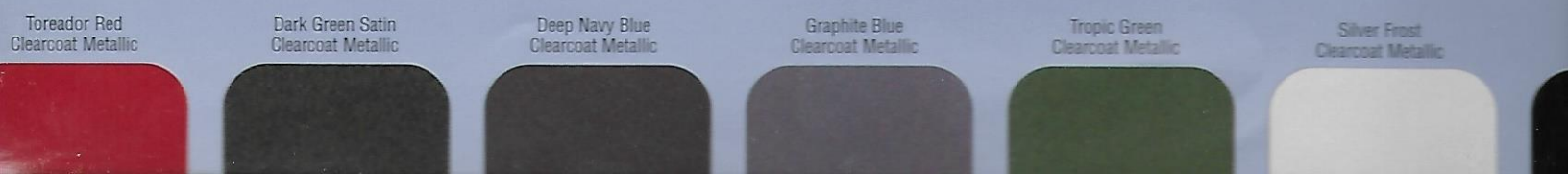
| INTERIOR COMFORT AND CONVENIENCE FEATURES (CONTINUED) | GS | LS | LS |
|---|---------|---------|---------|
| | SEDAN | SEDAN | WAGON |
| Second 12-volt power point (column shift models) | STD | OPT | STD |
| 4-wheel Anti-lock Brake System (ABS) | OPT | OPT | OPT |
| Front and rear floor mats | OPT | OPT | OPT |
| Power moonroof with one-touch-open feature | | OPT | OPT |
| Leather seating surfaces | | OPT | OPT |
| Rear-facing third seat | | | OPT |
| Wagon Group — cargo net, cargo cover | | | OPT |
| 6-way power passenger seat (Premium Group only) | | OPT | OPT |
| AUDIO SYSTEMS | SEDAN | SEDAN | WAGON |
| AM/FM stereo/cassette with 4 speakers | STD | STD | STD |
| 6-disc CD changer | OPT/DLR | OPT/DLR | OPT/DLR |
| MACH® Audio System with AM/FM stereo/cassette, 80 watts, and 6 speakers | | OPT | OPT |
| INSTRUMENTATION | SEDAN | SEDAN | WAGON |
| Analog instrumentation with speedometer, tachometer, engine coolant temperature gauge, fuel gauge and trip odometer | STD | STD | STD |

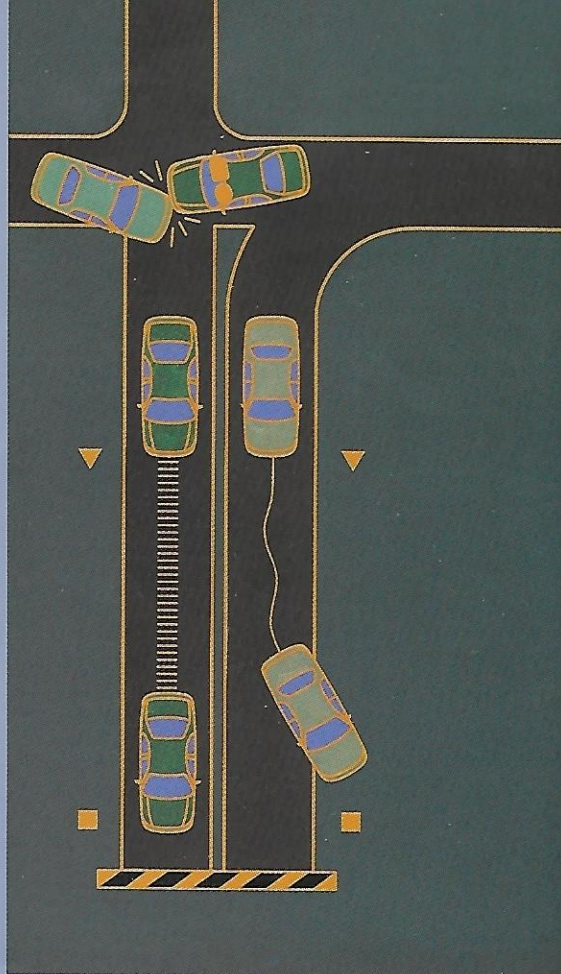
| WHEELS AND TIRES | GS | LS |
|---|-------|-------|
| | SEDAN | SEDAN |
| P205/65R15 black sidewall all-season tires | STD | STD |
| Mini spare tire | STD | STD |
| P225/55 ZR16 black sidewall all season tires | | OPT |
| 15" deluxe 5-bolt wheel cover | STD | STD |
| 15" bright aluminum wheel | OPT | STD |
| 16" chrome aluminum wheel (Includes rear stabilizer bar and unique rocker panel moldings) | | OPT |
| Conventional spare tire** | OPT | OPT |

| PREMIUM GROUP | LS |
|---|-------|
| | SEDAN |
| Includes: 200-horsepower 3.0L 24-valve Duratec V-6 engine, Electronic Automatic Temperature Control, automatic on/delay off headlamps, dual illuminated visor mirrors, autolock/relock system, Perimeter alarm and Keyless Entry keypad (driver's door) | STD |

PRODUCT CHANGES
 Following publication of this brochure, certain changes in standard equipment, options, price or product delays may have occurred which would not be included in these pages. Your Mercury dealer is your best source for up-to-date information. Lincoln Mercury reserves the right to change prices and options at any time without incurring obligations.

STD = Standard Feature; OPT = Optional Feature; DLR = Dealer Installed Feature
 *Under normal driving conditions with routine fluid/filter changes.
 **Not available on wagon with rear-facing third seat.
 Option Availability: Options shown or described in this brochure are available at extra cost and are offered only in combination with other options or subject to additional ordering requirements.





Naturally, Second Generation dual air
 come standard. Always wear your safety
 and secure children in the rear seat.

Available four-wheel anti-lock brakes
 maintain steering control during hard
 braking even on slippery road surfaces.

Ford Credit **Red Carpet Lease**
 Ford Credit provides the convenience
 of one-stop shopping with a variety
 of simple to understand purchase or
 Red Carpet Lease programs avail-
 able right at the dealership. For more information, ask
 your dealer for details, or visit us on the web at
www.fordcredit.com.

Mercury Cycling Team
 The Mercury Cycling Team is hitting
 the streets and will be participating in
 races from coast to coast. Look for
 this pro cycling team in your area.

For more information on Mercury vehicles via the
 Internet enter: www.mercuryvehicles.com.



Tracer



Mystique



Cougar



Sable



Grand Marquis



Villager



Mountaineer

Your Mercury dealer has all sorts of dealer
 installed accessories to help you customize
 your Sable. These include a number of
 accessories including a handy bike rack. It's
 available to install so you can take your bikes on the
 road with you. Ask your dealer about other
 available accessories.



Vibrant White
 Clearcoat

Interior Colors:

Medium Graphite

Plum

dedicated to your complete satisfaction.

ROADSIDE ASSISTANCE

MERCURY VEHICLE LIMITED WARRANTY

MERCURY CUSTOMER ASSISTANCE CENTER

SPECIAL DELIVERY PROCESS

OWNER DELIVERY PROCESS

WHAT IS THE MERCURY COMMITMENT?

It is the extra comforts of ownership,
exemplified in a comprehensive benefits
package. It is the assurance that meeting your
driving needs will always be our
ultimate objective.

Ask your dealer for complete details and a copy
of the limited warranties.

Imagine yourself in a Mercury 

LITHO IN USA (500K) 8-98 P-6829 Buckle up—*together we can save lives.*



50%
TOTAL RECOVERED FIBER
10% POST CONSUMER FIBER

