

2001 Stratus

Coupe and Sedan



We red
your mind



Stratus, one car, two styles: Coupe and Sedan. The first Dodge coupe to bear the Stratus name. And a Stratus Sedan that fills a race-inspired design with family-friendly features. Whichever you choose, quality benchmarking is happening everywhere. Ingenious class-exclusive new optional supplemental*



side air bags† for Sedan. Power everything. Instrument panel

CD changer. Built-in quiet. Envy-inspiring good looks.

Broad shouldered, low-slung stance. Standard 17-inch

cast aluminum wheels for R/T Coupe. Bold cross-hair grille.

Large jewel-like headlamps that shed a longer beam pattern,

and vivid three-dimensional perspective taillamps. Wind management

windshield and window design that lets Stratus slice gracefully through

bad weather. Superb handling in various forms, including a standard

double-wishbone touring suspension for Sedan, and a standard MacPherson

strut/multilink touring suspension for Coupe SE, with optional performance

tuning for R/T Coupe. Optional ABS Plus for Sedan. Available ABS with

Low-Speed Traction Control for Coupe. And then there's power. For Stratus

R/T Coupe, a sensational 200-horsepower‡ 3.0-liter V6§ SOHC

engine with five-speed manual transaxle — the first such

combination in years. Stratus SE Coupe sports a 2.4-liter

16-valve SOHC engine§ with 147 horsepower and 158

pound-feet of torque. For Stratus

Sedan, a standard 2.4-liter

four-cylinder engine with 150

horsepower. There's also an

available 200-horsepower

2.7-liter V6 engine paired

with the clutchless

AutoStick® Driver Interactive

Transaxle Shifter. 2001

Stratus: a finely designed

package of convenience,

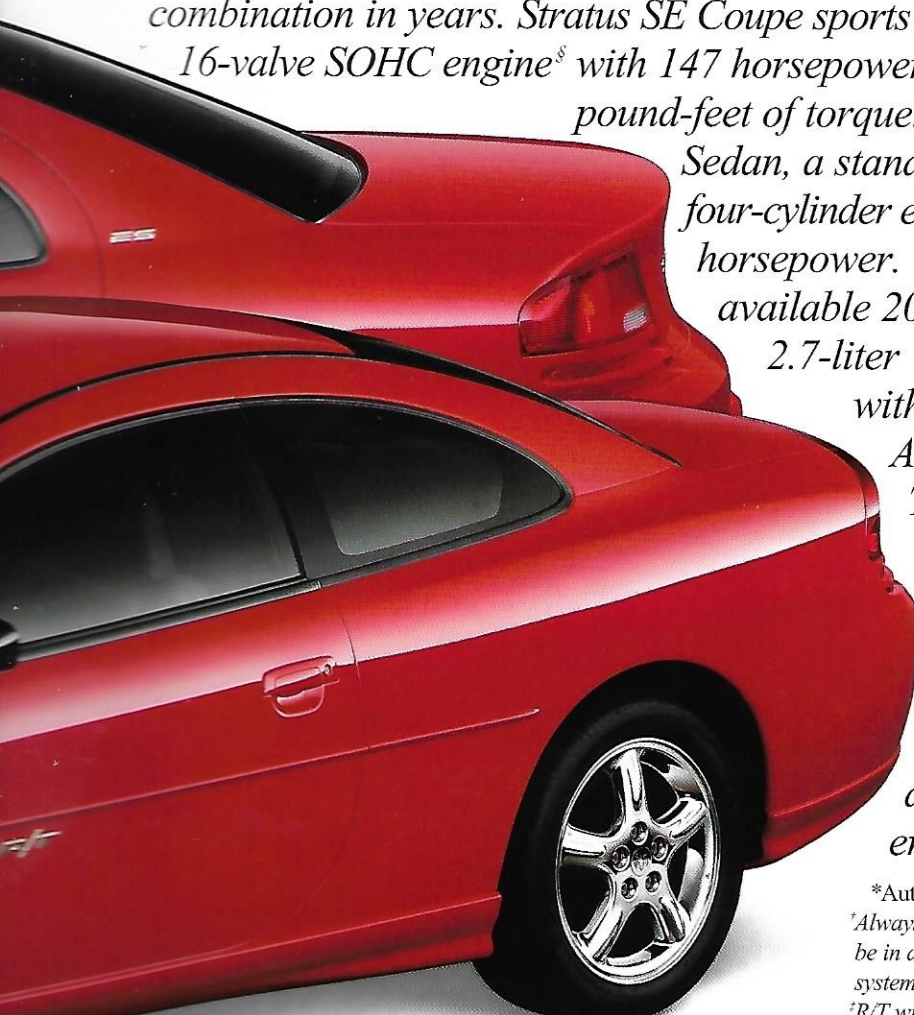
performance, and sculpted

good looks that just happens

to come in two forms, each

distinctly different and

eminently Dodge.



*Automotive News lower mid-range segment.

†Always use seat belts. Children 12 and under should always be in a backseat correctly using an infant or child restraint system, or a seat belt that is right for their age and size.

‡R/T with premium fuel.

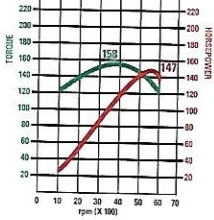
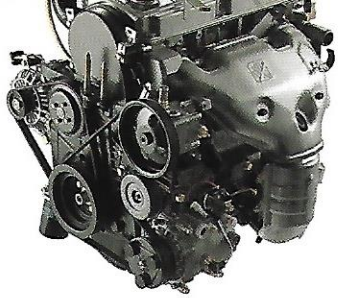
§Built by Mitsubishi Motors Corporation.

Dodge Stratus  Different





DODGE P/T



dramatically with a standard 3.0-liter V6* engine that produces 200 horsepower[†] at 5,500 rpm and 205 pound-feet of torque at 4,500 rpm. This engine proved itself by clocking an outstanding 06.55 seconds in 0 to 60 miles-per-hour testing, as certified by the Skip Barber Driving School. We matched it with a five-speed manual transaxle to satisfy your hunger for power. Stratus SE Coupe offers a standard 2.4-liter SOHC 16-valve four-cylinder engine* that produces 147 horsepower at 5,500 rpm and 155 pound-feet of torque at 4,000 rpm also with a five-speed manual transaxle.

*Built by Mitsubishi Motors Corporation.
† R/T with premium fuel.

Choose your driving style. Depending upon how active a driver you want to be, Stratus Coupe offers a four-speed automatic transaxle; AutoStick[®] with the performance of both automatic and clutchless manual shifting whenever you want; or the totally-in-charge, five-speed manual transaxle.

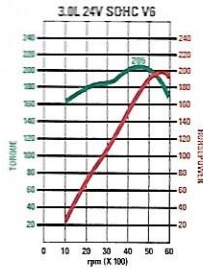


Fit to be



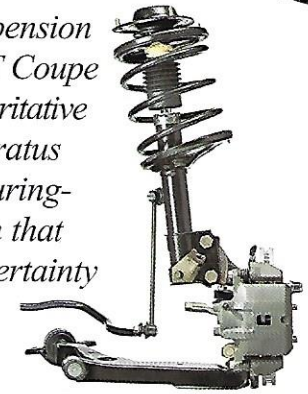
The Stratus R/T Coupe has a look on looks that starts from the ground-up with standard 17-inch cast aluminum wheels, and an optional chrome finish. And looks are just the start. These tires have outstanding capability you'll feel over every inch of road. Sixteen-inch tires, standard on Stratus SE Coupe, provide the confident handling that comes naturally to Stratus overall.*

**Late availability.*



tried.

A performance-tuned, four-wheel fully independent suspension gives Stratus R/T Coupe precise and authoritative control, while Stratus SE rides on a touring-tuned suspension that delivers all the certainty and assurance you deserve.





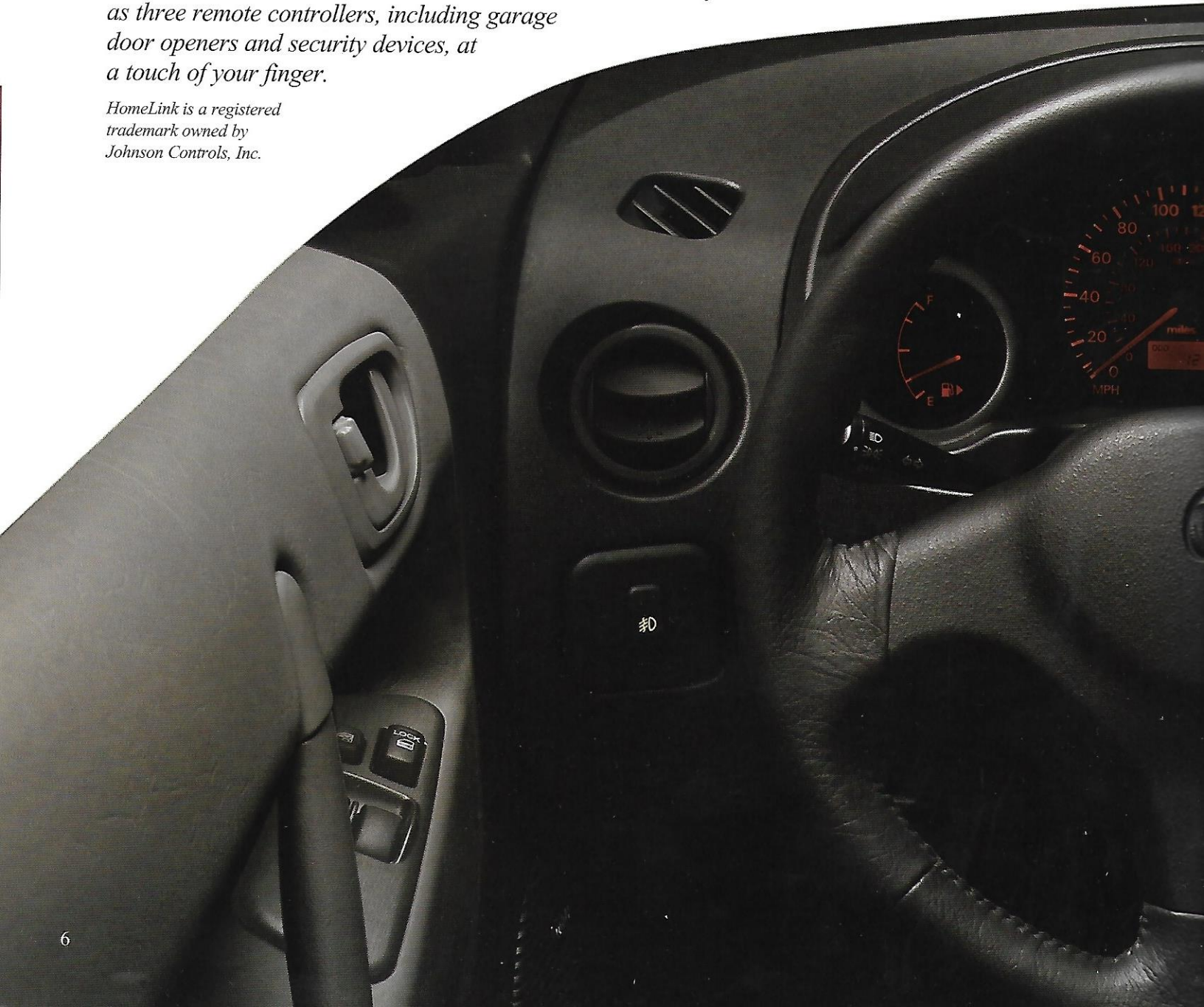
Assert tr

Know where you're heading. The new Stratus offers plenty of amenities you might not expect in a coupe. One of them is the instrument panel-mounted compass and temperature display that helps you keep track of both your direction and the outside temperature.



The driver-oriented cockpit begins with a sleek, sport-worthy instrument panel with bold analog faces for the speedometer, left, tachometer, right, and bright, digital odometer. The center display features a liquid crystal direction reading compass, and outside temperature display. An optional HomeLink® Universal Transceiver on the driver-side sun visor can activate as many as three remote controllers, including garage door openers and security devices, at a touch of your finger.

HomeLink is a registered trademark owned by Johnson Controls, Inc.

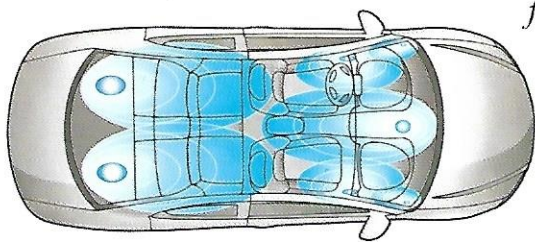


ness ned.



Travel-wise. Power windows with driver-side one-touch-down, automatic speed-sensitive door locks, and dual power outside mirrors — in fact, power everything — all add to your peace of mind, while an optional sunroof adds a fine light to your pleasure.

Whatever you like to hear, hear it well. An available four-disc in-radio CD changer with seven-speaker Infinity® Sound System lets you immerse yourself in your favorite sounds, with the world outside as the greatest concert hall of all.



Infinity is a registered trademark of Infinity Systems, Inc.







Unlimited access.



Stratus Coupe is as family-friendly as it is stylish, with user-ready child seat top tether anchors for aftermarket child seats. And of course, there's a three-point rear-center seat belt, so that all five persons can be assured of a very safe ride. You'll also appreciate the driver's memory recliner seat, and, for Stratus R/T Coupe, a manual lumbar support comes standard.



Putting some light on the subject. Backseat passengers will appreciate the rear compartment lamps. The lamps, located on both sides of the rear seating area provide illumination for passengers as they enter and exit.

All through Stratus Coupe's interior you'll find an abundance of smart storage surprises including a larger, lockable glove box, and two rear-seat cup holders, located right and left in the rear trim panels. You'll be able to see it all in natural sunlight, too, if you choose the optional sunroof.



60/40 split-folding rear seatbacks let you ski in long gear like skis, fishing rods or even football posts, from the trunk to the cabin space, and still have room for a rear-seat passenger.



Time doesn't stand still. That's why Stratus keeps you plugged into your world via two 12-volt accessory outlets. One retains full-time power from the vehicle battery, the other's ignition fed; you'll find both in the forward console.



Even the doors are doing more. Improved handles let you shut them easier, while large front door map pockets provide extra storage for maps, note pads and other essential items.

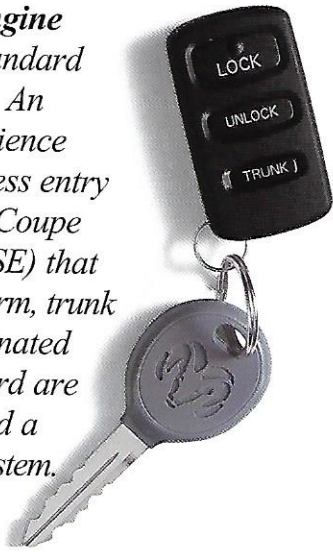
Properly

The hardest-working armrest in stow-business. Lift the lid of the armrest center console and find space for sunglasses, CDs, audio tapes, change, your cell phone and more. Maximum convenience and organization.

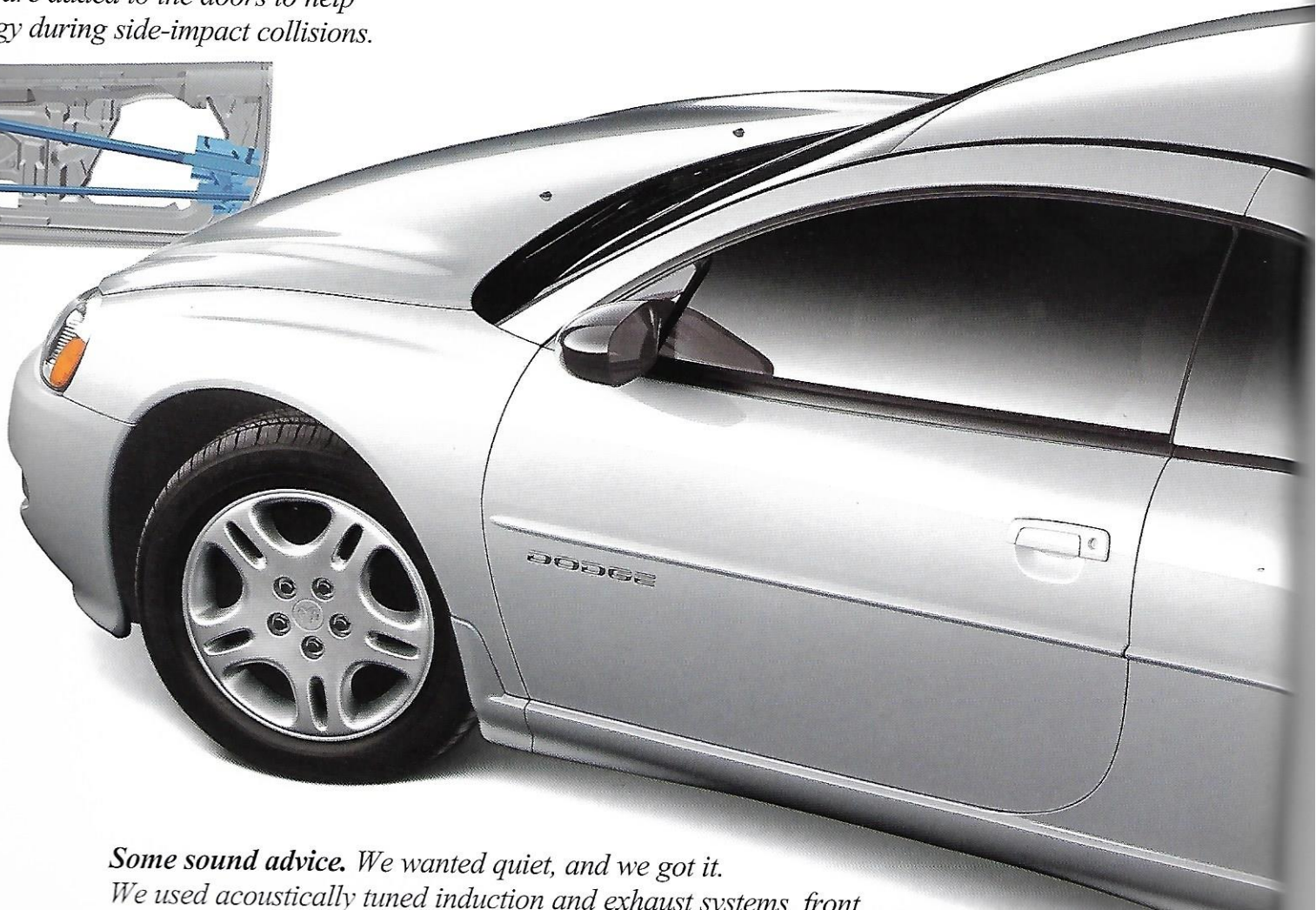
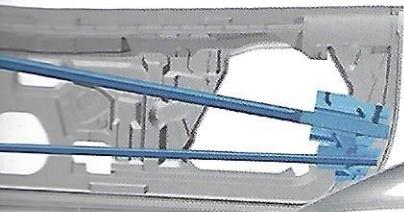


The only thing we didn't want was our

A Sentry Key® Engine Immobilizer is standard on Stratus Coupe. An additional convenience is the remote keyless entry (standard on R/T Coupe and available on SE) that includes panic alarm, trunk release, and illuminated entry. Also standard are central locking and a Vehicle Security System.

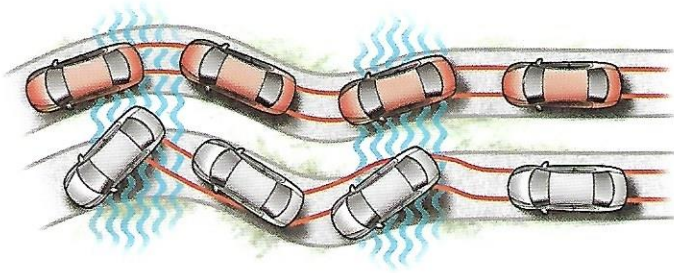


more door than meets the eye. Reinforcement bars are added to the doors to help absorb energy during side-impact collisions.



Some sound advice. We wanted quiet, and we got it. We used acoustically tuned induction and exhaust systems front

ng control enthusiasm.



Optional antilock brakes (ABS) (not available on SE) help you stay in control when braking conditions demand extra sensitivity to the road.

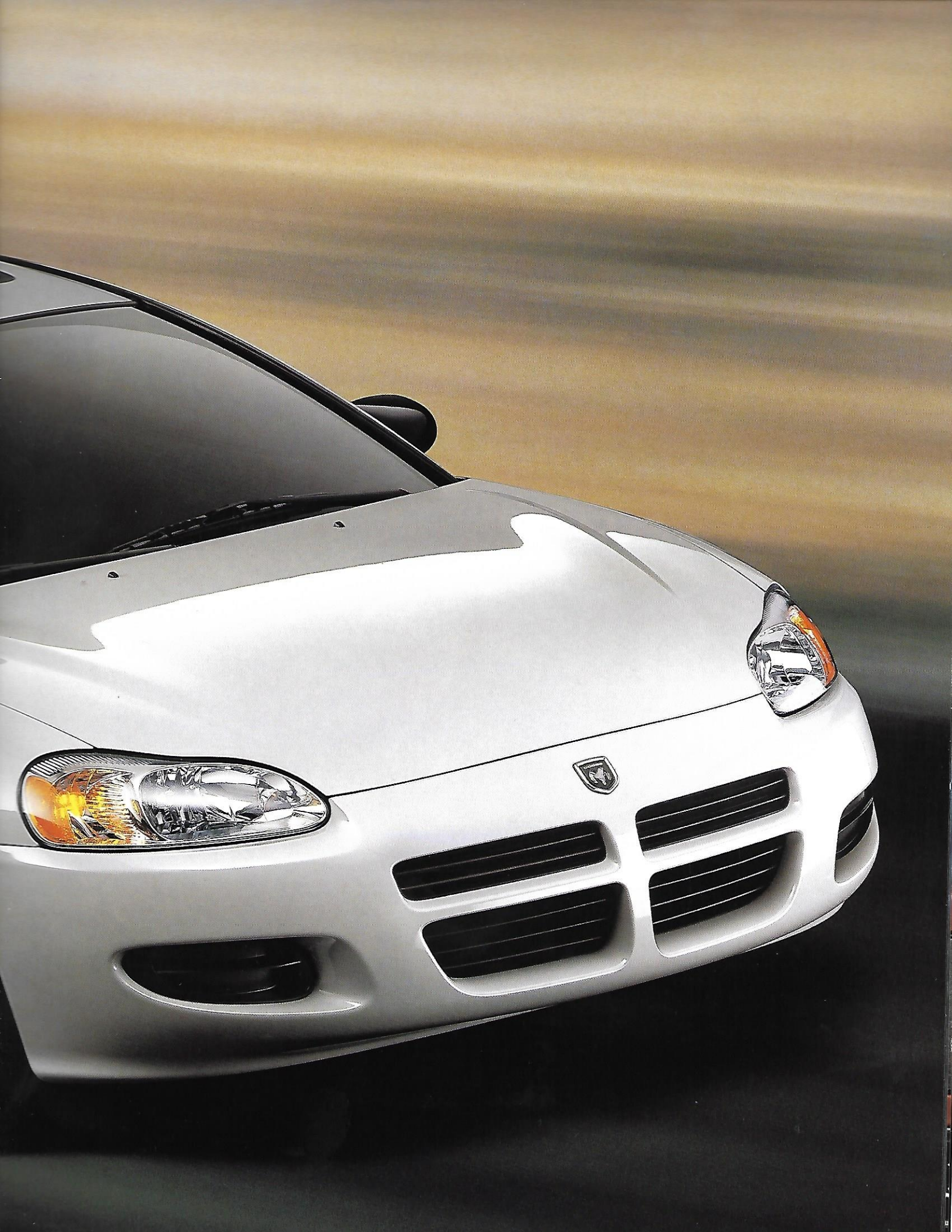
Low-Speed Traction Control (included when ABS is ordered in combination with an automatic transaxle) operates in speeds up to 25 mph, and assists in allowing each drive wheel to take advantage of available road space in slip-prone conditions.

Next Generation driver and front-passenger air bags are true friends indeed when it counts the most.*

**Certified to the Federal Regulations that allow less forceful front air bags. Always use seat belts. Children 12 and under should always be in a backseat correctly using an infant or child restraint system, or a seat belt that is right for their age and size.*





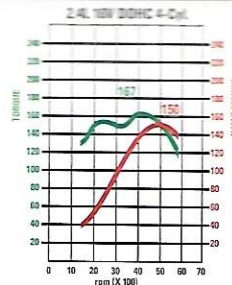




DODGE



Choose available all-season 16-inch tires with great looking, hard-working chrome wheels (optional on ES), or a choice of cast aluminum wheels or attractive wheel covers.



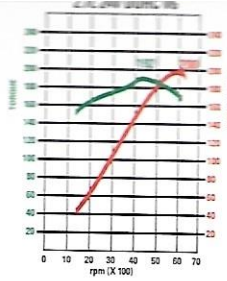
Out of the r into



The wish-fulfilling wishbone. The dynamic capability of Stratus sedan is courtesy of a double-wishbone touring suspension that provides astounding handling with a silky, sophisticated, expensive feel.



...s two. One hundred and fifty-horsepower worth of
...ation comes from Stratus Sedan's refined 2.4-liter 16-valve
...ylinder engine with a four-speed automatic
...de. The option is a new
...horsepower 2.7-liter V6
...our-speed automatic
...de. AutoStick is
...rd on Stratus ES.



AutoStick[®] by the way, is the transaxle innovation that lets you select convenient automatic gear changing, or more active clutchless manual shifting any time you want.



...t, ...he groove.





A road-conscious design of Stratus Sedan's exterior was the first step toward noise reduction. We can't make it a quieter world, but we can make a quieter car. Twenty-five-percent thicker glass, triple door seals and aerodynamically designed side-view mirrors reduce rush, whir, and wheeze as you slice the air.

You can



Take the wheel, and get your hands on a lot more than the choice between right or left. Here's where you'll find the control buttons for the standard electronic speed control. Overhead, try an optional sunroof. Another option is HomeLink® Universal Transceiver on the driver's sun visor that lets you activate up to three remote controllers — including garage door openers and security devices — with fingertip control.

A satisfying sense of power comes, logically, from power windows with driver's one-touch-down capability, power door locks, power trunk release, and dual power exterior mirrors, all standard.



get behind this.



Accompany every trip you take with the sounds you love. An AM/FM stereo radio with cassette player, changer controls and four coaxial speakers is standard. An available in-dash four-disc CD changer conveniently

allows you to insert four CDs at a time. Also available is a six-speaker premium sound system that will please your sense of hearing as much as Stratus Sedan pleases your senses of touch, sight — and style.







Grand slam. We rechecked every detail for comfort and convenience, and decided to improve the finger-pull cups in the door panels so that you can shut the door more easily.



Four cup holders, two forward and two back, along with plenty of spaces for your cell phone, music, paperbacks or spare change, thanks to a user-friendly center storage armrest.

Send 'em p



Family style. The LATCH system of user-ready child seat top tether and lower anchors helps ensure the consistent and correct installation of compatible aftermarket child seats.



Interior Room	
Head room, front/rear (in)	37.6/35.8
Leg room, front/rear (in)	42.3/38.1
Hip room, front/rear (in)	50.5/53.4
Shoulder room, front/rear (in)	55.2/54.7
Seating capacity	5
Passenger volume (cu ft)	94.0
Trunk room (cu ft)	16.0

cking.



Sixteen cubic feet of trunk capacity.

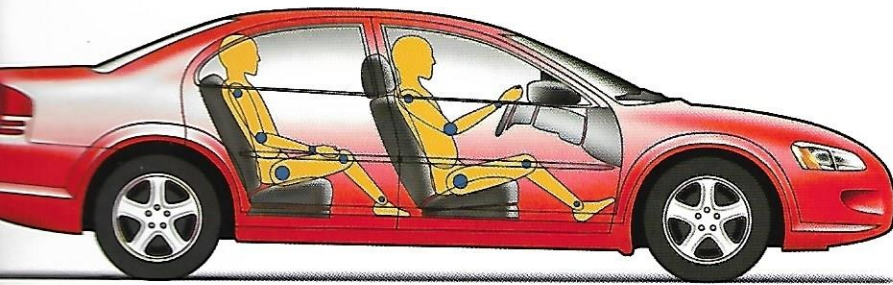
Ninety-four cubic feet of passenger volume. We're talking space. We're talking a vacation's-worth of camping gear or a weekend's worth of gardening. Best of all, you can do some arranging and rearranging. A 60/40 split-folding rear seatback lets you load Stratus Sedan's space with long articles, from skis or golf clubs to fence posts, and still have room for a backseat passenger.



All the stopping power you need. Four-wheel disc brakes on standard 15-inch tires give improved resistance to brake fade and better brake feel and life. Also, "lubricated-for-life" ball joints help reduce friction and create better noise isolation. ABS Plus, which minimizes sliding while braking in turns, is optional on SE and ES.

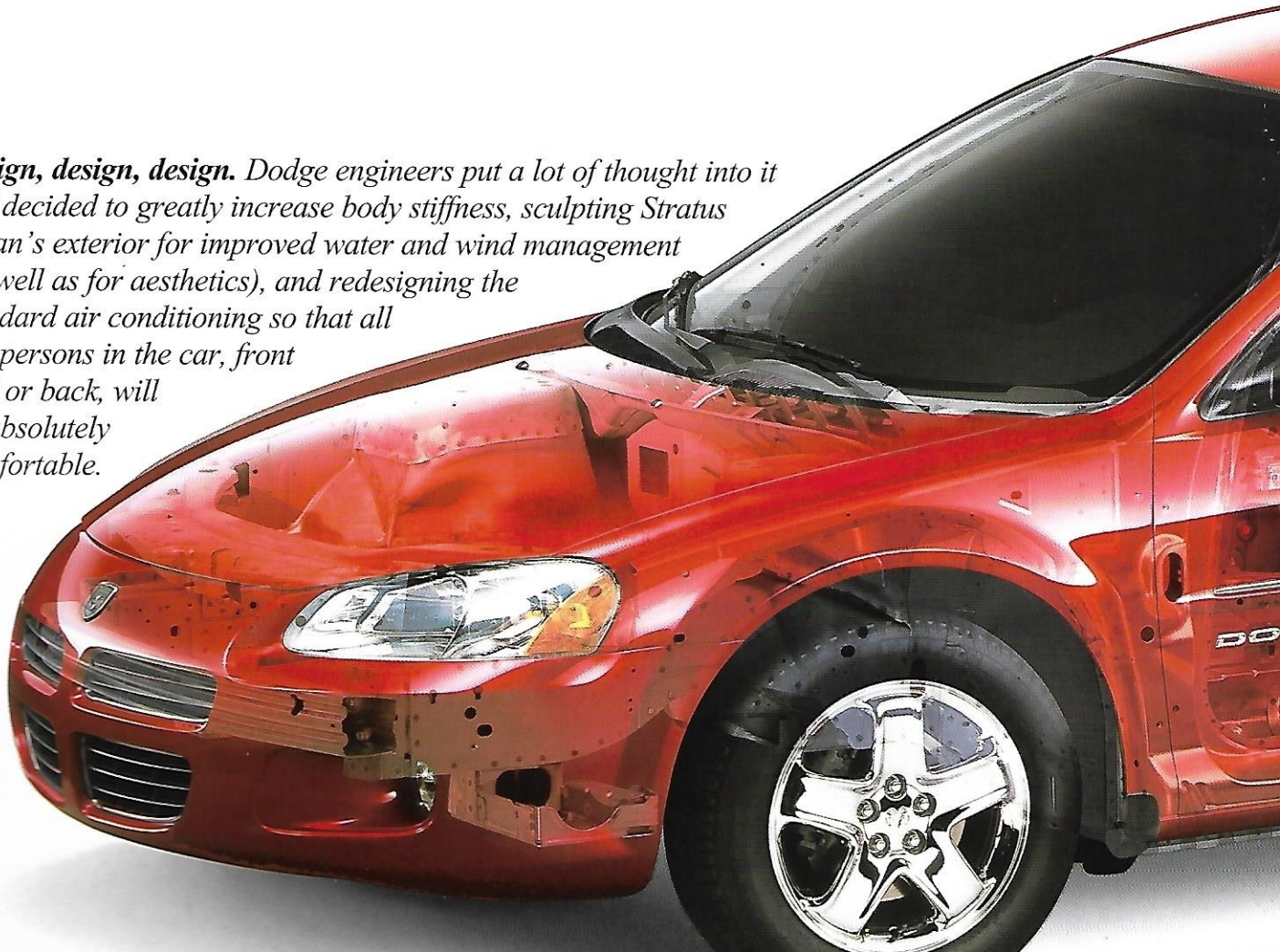


We stopped and 1

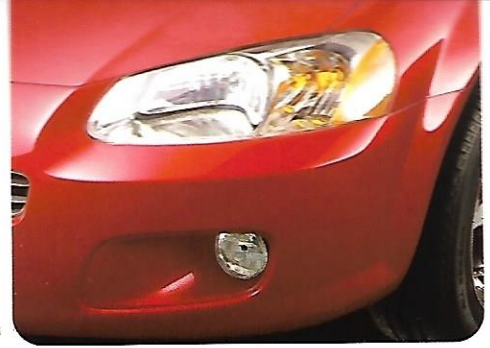


A compliant double wishbone short-/long-arm (SLA) front suspension system provides superior balance between handling stability and ride comfort.

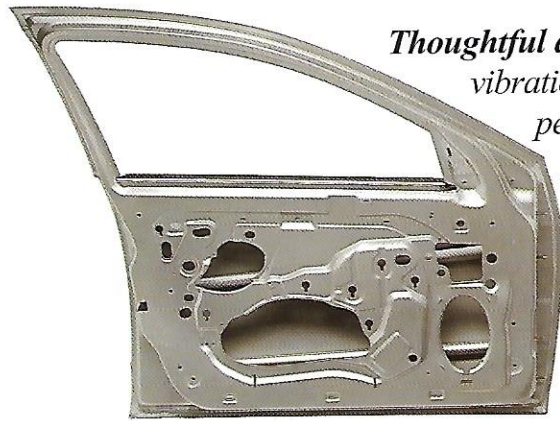
***Design, design, design.** Dodge engineers put a lot of thought into it and decided to greatly increase body stiffness, sculpting Stratus Sedan's exterior for improved water and wind management (as well as for aesthetics), and redesigning the standard air conditioning so that all five persons in the car, front seat or back, will be absolutely comfortable.*



Light up your world. Not only are the jewel-like headlamps whiter and brighter, they also provide a longer beam pattern with separate high and low beam units, and have a time-delay feature that allows them to remain on for 90 seconds if they are turned off after the ignition is turned off.



to look sten.



Thoughtful design also brings noise, vibration and harshness to a peaceful minimum. Foam-filled structural cavities, improved noise isolators, 25-percent thicker glass, and triple door seals all share the credit.



When i

Stratus Sedan is serious about safety. We prove it with optional supplemental side air bags, and standard Next Generation multistage driver and front-passenger air bags.* Optional supplemental side air bags protect both front and rear outboard occupants and can deploy independently upon impact in side collisions. Next Generation multistage driver and front-passenger air bags have different levels of deployment, depending upon the severity of impact, and whether or not passengers are wearing their seat belts. As for the front seat belts, innovative and unique pretensioners and load limiters provide enhanced occupant protection.*



to s

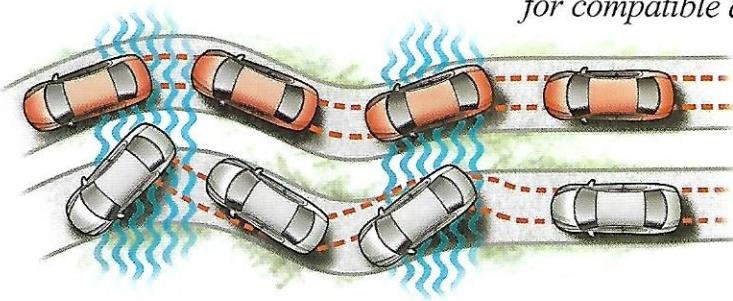
we're t

**Certified to the Federal Regulations that allow less forceful front air bags. Always use seat belts. Children 12 and under should always be in a backseat correctly using an infant or child restraint system, or a seat belt that is right for their age and size.*



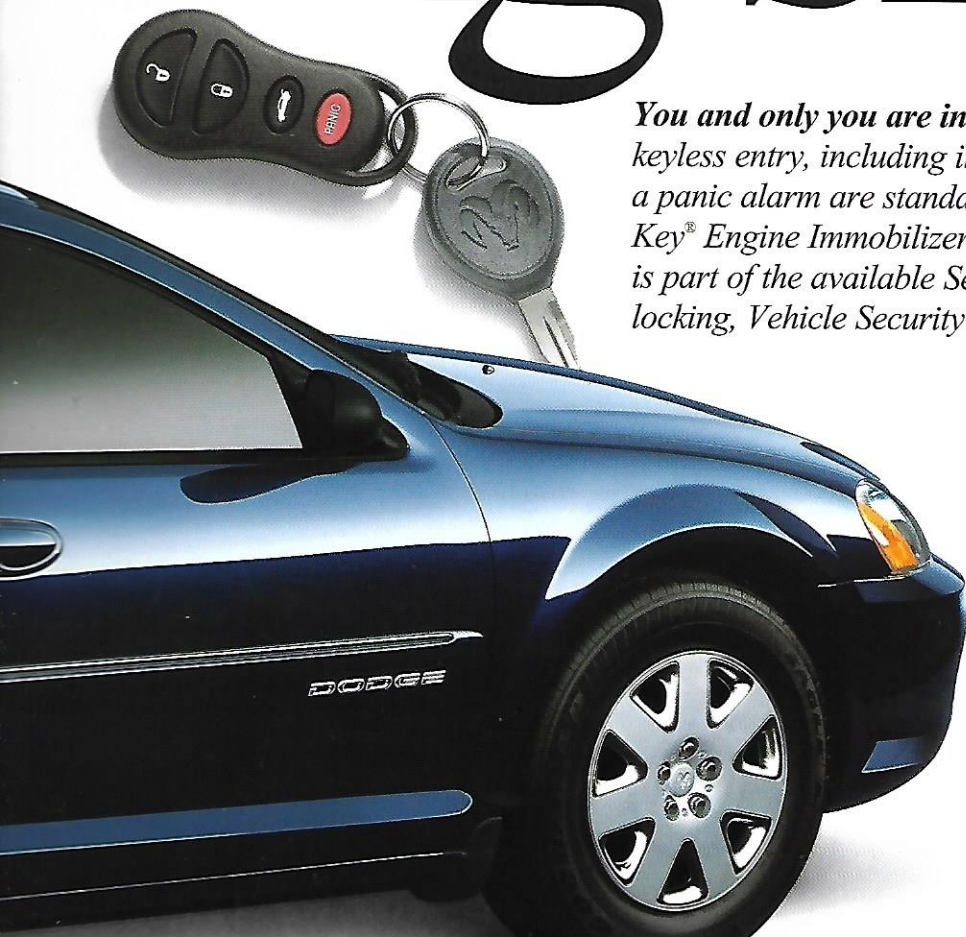
comes safety, king sides.

Class-exclusive[†] ABS Plus, plus more. Optional on Stratus, ABS Plus balances brake forces while turning — a marked advance over previous straight-on antilock braking. Important additional information on interior safety includes the LATCH system of user-ready child seat top tether and lower anchors located on the rear window shelf and lower seat



for compatible aftermarket child restraints, and both seat and shoulder belts for the rear-center passenger.

You and only you are in charge of your Stratus Sedan. Remote keyless entry, including illuminated entry, trunk lid release and a panic alarm are standard on ES and optional on SE. A Sentry Key[®] Engine Immobilizer is optional on Stratus Sedan. Sentry Key is part of the available Security Group which includes central locking, Vehicle Security System, and more.



Safety and security, working together.

A standard remote power trunk release button is as close and easy to reach as the instrument panel. The trunk itself features a glow-in-the-dark inside emergency trunk lid release to



Over 85 years, Dodge has earned a reputation for building cars, trucks, and minivans that are truly different. We bring new designs into production fast. We create innovations — Dodge Caravan, for example, the original minivan — that serve people better than before. Dodge is original in its thinking, aggressive in its technology, bold in vision, and responsible in its commitment to safety.



Why Dodge.



Everyone is Different.

We're proud to be able to fulfill the changing needs of ALL drivers — from young families, first-time owners, and spirited adventurers, and hard-working men and women whose own dependability demands cars, trucks and vans as tough as the jobs they do.

Things you can count on.

When you choose Dodge, you can count on innovations created especially to ensure you of a family-safe, quality-quiet, performance-confident driving experience. Ask your dealer about

Shopping resources.

We've even reinvented the way we get our vehicles to you. We post the very latest national incentive information on our Web site, www.4adodge.com, and we send it to you in the mail. We're also ready to talk to you any time at **1-888-4-A-Dodge**, or ask your dealer about money-saving offers or special financing that may be available on certain models for eligible customers.

Special Programs.

Dodge recognizes the unique needs of small businesses. **BusinessLink™** is a

program designed specifically for commercial customers. These dealers are committed to selling and servicing your business-related vehicles to save you time, money and hassles. Call **(877) 2-THE-LINK** to learn more.

ON THE JOB is a special incentive program for qualified commercial buyers. Small businesses are eligible for cash discounts or allowances on upfit equipment for trucks and vans. To learn more about incentives for which your business may be eligible

Chrysler Financial provides special financing terms including TRAC leases, special payment plans and preferred financing to eligible businesses. Call 1-800-9-CFO-NOW for more information.

Automobility program is another innovative program that provides cash rebates to qualified retail buyers. Adaptive equipment on new Dodge vehicles. For information on incentives and factory approved upfitters of

repairs. Every new Dodge vehicle is covered by a **3-year or 36,000-mile Bumper-To-Bumper Warranty*** that includes **Roadside Assistance[†]** — 24 hours a day, seven days a week. And please ask your dealer about **Dodge Service Contracts**, and our **Customer Call Center**, where you can get practical service advice 24/7.

the beginning of a new era in racing excitement. Watch for the Neon Charity Challenge, Barber Dodge Pro Series, NASCAR Craftsman Truck Series,[®] the Viper Le Mans Series, and more. Dodge is asserting a bold and powerful presence in the motorsports world, and millions of fans are loving it.

Benefits of ownership.

Being a Dodge owner also means you'll receive timely information on the newest Dodge products, dealership service pricing, and Dodge-



dealer for additional details and a copy of the warranty. Covers the complete vehicle against defects in materials and workmanship. Wiper blades, clutch disc, brake pads, rotors and drums, normal maintenance items (these items are warranted against defects for 12 months or 100,000 miles, whichever comes first) (covered by their own manufacturer's warranty). Some truck tires are warranted by their manufacturer. © 2001 DaimlerChrysler Corporation. Service provided by Cross Country Motor Club (in California, Cross Country Motor Club of California, Inc.)

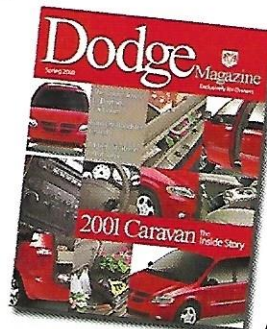
sponsored events. You can take part in exclusive Dodge-only activities, like vacation events you'll remember all your life.

You'll also receive **Dodge Magazine** three times a year — a wealth of owner stories, industry news, and valuable parts and service offers.

Millions of Dodge owners like to accessorize their vehicles. And eventually,

most vehicles need parts.

At Dodge, **Mopar** is your resource for parts and accessories made specifically to deliver perfect fit and finish for your Dodge vehicle.



We want you to be a part of Dodge. We want you to share our history of industry firsts and industry and consumer group awards. And we think you'll be proud to own a vehicle honored for excellence.

Choose Dodge. For nearly

Warranty and service.

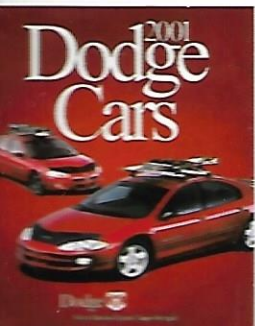
Sponsorship.

adaptive driving devices including wheelchair lifts, call Automobility headquarters at (800) 255-9877.

Accessories exclusively

Hit the slopes. This six-pair ski and snowboard carrier holds up to six pairs of skis or four snowboards, or a combination of both. This roof-top carrier features silver anodized aluminum construction, integrated locks with corrosion-resistant covers and either-side opening for easy loading and unloading.*

**Capacity may be affected by parabolic skis and/or binding clearance.*

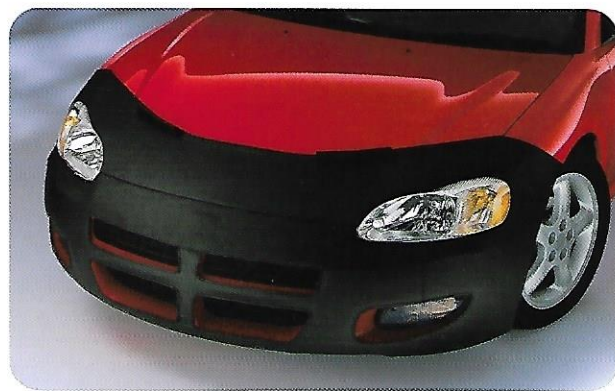
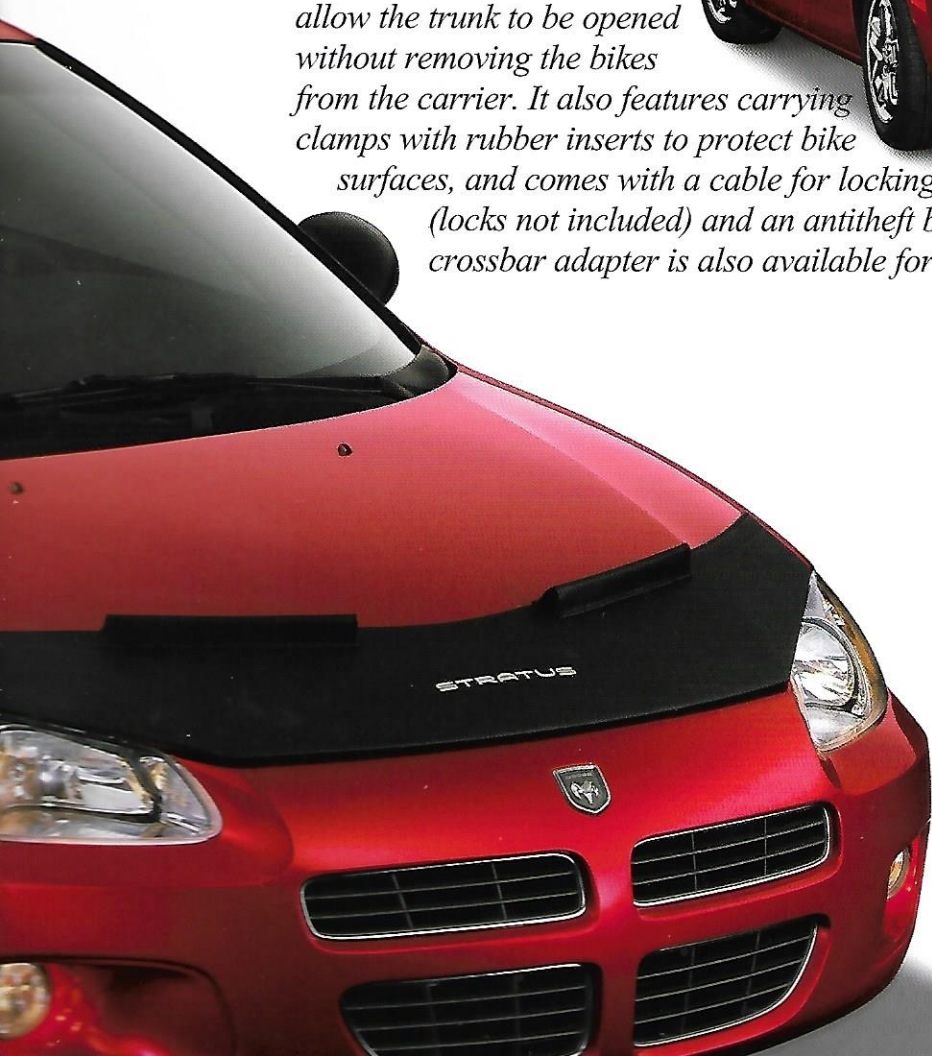


Owning a new Dodge Stratus is the perfect opportunity to outfit a unique car to your unique needs.

made for Stratus.

Hit the bike paths wherever you find them with the Mopar Hitch-Mount Fold-Down Bike Carrier. It holds up to two bicycles and has a unique fold-down feature to allow the trunk to be opened without removing the bikes from the carrier. It also features carrying clamps with rubber inserts to protect bike surfaces, and comes with a cable for locking bikes

(locks not included) and an antitheft bolt that locks the carrier to the hitch. A crossbar adapter is also available for bikes without horizontal-style crossbars.



Rise above the elements. The Mopar Front-End Cover with Bug Screen helps protect your car from day-to-day wear and tear. The black vinyl, two-piece construction, with turned-under and sewn edges, can remain in place even while the hood is opened. The

Standard fe



Dodge Stratus R/T Coupe



Dodge Stratus SE Coupe

Standard Dodge Stratus Coupe models include:

- Air Bags* — Next Generation, driver and front-passenger
- Air Conditioning — Manual temperature controls
- Graphite Accents — Center console and door trim bezels
- Cargo Net — Located in trunk
- Clock — Digital, integral to all radios
- Immobilizer — Cannot start engine unless manual transaxle clutch pedal is depressed
- Child Seat Hooks — Rear (2)
- Floor Mats — Floor, includes cup holders, storage armrest for cassette and CDs
- Armrests — Front (2); Rear (2) (molded in rear quarter trim panels)
- Power Windows — Electric rear window
- Power Door Locks — Power
- Exhaust System — Long-life stainless steel
- Floor Mats — Front and rear, carpeted
- Glass — Tinted, all windows, with windshield shade band
- Trunk Lock — Locking with lamp
- Instrument Cluster
- Gauges — 140-mph speedometer, tachometer, odometer, trip odometer, fuel level and engine coolant temperature
- Indicators — Low oil pressure, low brake fluid, trunk and door ajar, seat belt
- Cluster Tell-tale, check engine, low washer fluid, low fuel, parking brake, high beams and air bag
- Lighting
- Exterior — Halogen headlamps
- Interior
- Glove box lamp
- Rear reading with courtesy lamps
- Trunk
- Pockets — Front doors
- Mirrors
- Exterior — Dual power, gloss black
- Interior — Dual covered visor vanity
- Power Outlet — 12-volt, located in forward section of floor console
- Belt Cluster Tell-tale — Stays on after engine start until driver buckles up
- Seat Belts
- Front, height-adjustable shoulder belts with traveling buckles
- Rear, three-point shoulder belts for all rear-seat passengers
- Seats — Front cloth buckets with driver's memory recliner, single manual height adjustment, easy-entry passenger and adjustable head restraints; rear 60/40 split-folding rear bench seatback with lock
- Key* Engine Immobilizer — Theft-deterrent system with encoded key. Includes three keys (including valet key)
- Driver's Group — Front ashtray and cigar lighter
- Remote Control — Electronic
- Steering — Speed-sensitive power, rack-and-pinion
- Steering Column — Tilt

Suspension — Front independent with gas-charged MacPherson struts and stabilizer bar; rear independent multilink with stabilizer bar

Tires — Spare, compact

Trunk Lid Release — Remote

User-Ready Child Seat Top Tether Anchors — At each backseat position to minimize compatible aftermarket child seat movement

Windows — Power with driver's one-touch-down feature

Wiper System — Variable intermittent, two-speed wipers with one pass feature

* Certified to the Federal Regulations that allow less forceful front air bags. Always use seat belts. Children 12 and under should always be in a backseat correctly using an infant or child restraint system, or a seat belt that is right for their age and size.

POWER TRAIN AVAILABILITY

Engine	Transaxle	Dodge Stratus Coupe	
		SE	R/T
2.4-liter SOHC 16-valve 4-cylinder	5-speed manual	21A	
	4-speed automatic	22A	
3.0-liter SOHC 24-valve V6	5-speed manual		23L
	4-speed automatic	24A	24L

FEATURES

Feature	SE	R/T
Brakes		
— Front disc/rear drum	●	
— Power 4-wheel disc		●
— Power 4-wheel disc antilock (includes Traction Control with automatic transaxle only)		0
Brake-Park Interlock — Cannot shift out of Park unless brake pedal is depressed	0	0
Compass/Temperature Center Display — Displays for compass and outside temperature		●
HomeLink® Universal Transceiver — Programmable, 3-function, with remote controls for garage door opener, interior/exterior home lighting and security devices		P
Leather Interior Group — Includes Royale leather-trimmed seats, 6-way power driver's seat and HomeLink Universal Transceiver		0
Mirrors — Dual illuminated covered visor vanity		●
Interior — Electrochromic automatic dimming day/night rearview		●
Remote Keyless Entry — Controls for power door locks, illuminated entry system and panic alarm. Includes 2 transmitters	P	●
Seats		
— Front Melrose/Rodeo cloth buckets with driver-side single manual height adjustment, adjustable front head restraints, driver memory recliner and easy-entry passenger	●	
— Front Cole/Regina cloth buckets with driver-side single manual height adjustment, adjustable front head restraints, driver side manually adjustable lumbar support, driver memory recliner and easy-entry passenger		●
— Front Royale leather-trimmed buckets with 6-way power driver seat, driver side manually adjustable lumbar support, adjustable front head restraints and easy entry passenger		P
Sound System		
— AM stereo/FM stereo radio with cassette player, 3-band graphic equalizer and 6 speakers	●	
— AM stereo/FM stereo radio with combination cassette player/CD player, 3-band graphic equalizer and 6 speakers	P	
— AM stereo/FM stereo radio with combination cassette player/CD player and Infinity® Sound System with 7 speakers in 7 locations		●
— In-radio 4-disc CD changer with Infinity® Sound System and 7 speakers		0
Steering Wheel — Leather-wrapped	P	0
Sunroof — Power, with express-open, vent with sliding sunshade and 30-second delay when ignition is turned off	0	0
Suspension — Sport-tuned		●
Tires		
— P205/55HR16 BSW all-season performance	●	
— P215/50HR17 BSW all-season performance		●
Touring Group — Includes AM/FM stereo radio with combination cassette/CD changer, 3-band graphic equalizer, 6 speakers and remote keyless entry with panic alarm and two transmitters	0	
Traction Control — Low-Speed, controls wheel spin on slippery surfaces (requires antilock brakes and automatic transaxle)		P
Transaxle — AutoStick® Driver-Interactive Transaxle shifter, provides clutchless manual shifting		P

Features and options.



Stratus ES Sedan



Stratus SE Sedan

All Dodge Stratus Sedan models include:

- Bags*** — Next Generation multistage driver and front-passenger
- Conditioning** — Manual temperature controls
- Lock-Park Interlock** — Cannot shift out of Park unless brake pedal is depressed
- Brakes** — Power four-wheel disc
- Child Seat Lower Anchors and Tether System** — At each backseat position to consistently minimize LATCH-compatible aftermarket child seat movement
- Radio** — Digital, integral to all radios
- Seat Hooks** — Rear (2)
- Trunk Liner** — Floor, includes cup holders, storage armrest for cassettes and CDs, tissues and pen holder
- Cup Holders** — Front (2) and rear (2)
- Defroster** — Electric rear window
- Door Locks**
 - Power, automatic speed activated with illuminated controls
 - Child-protection rear
- Door Mats** — Front and rear, carpeted
- Driver's Seat** — Driver's left side
- Glass** — Tinted, all windows including solar-control windshield
- Glove Box** — Locking with lamp
- Instrument Cluster**
 - Gauges — 120-mph speedometer, tachometer, fuel level, engine coolant temperature, odometer and trip odometer
 - Indicators — Low oil pressure, charging system, low fuel, check engine, air bag, brake, cruise, highbeams, and engine coolant temperature
- Lighting**
 - Exterior — Halogen headlamps with time delay
 - Interior
 - Dome
 - Front cup holders
 - Glove box lamp
 - Trunk
- Lap Pockets** — Front doors
- Mirrors**
 - Exterior — Dual, power
 - Interior — Day/night rearview
- Power Outlet** — 12-volt, located in lower center of instrument panel
- Seat Belt Cluster Tell-tale** — Stays on after engine start until driver buckles up
- Seat Belts**
 - Front, height-adjustable shoulder with traveling buckles
 - Rear, three-point shoulder belts for all rear-seat passengers
- Seats** — Front cloth buckets with two-way head restraints, reclining seatbacks; rear 60/40 split-folding seatback
- Speed Control** — Electronic with steering wheel-mounted controls
- Steering** — Power-assisted, rack-and-pinion
- Steering Column** — Tilt
- Suspension** — Double-wishbone, touring, front high-arm with lower stabilizer bar;

POWER TRAIN AVAILABILITY

Engine	Transaxle	Dodge Stratus Sedan		
		SE 24B	SE 24C	ES 28L
2.4-liter DOHC 16-valve 4-cylinder	4-speed automatic			
2.7-liter DOHC 24-valve V6	4-speed automatic			

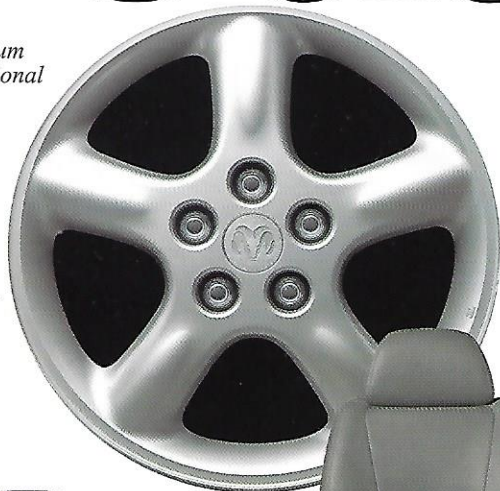
FEATURES

	SE 24B	SE 24C	ES 28L
Air Bags* — Supplemental side for front and rear outboard occupants	0	0	0
Assist Handles — For all passengers		●	●
Brakes — Power 4-wheel disc with ABS Plus	0	0	0
Cargo Net — Located in trunk			●
Cold Weather Group — Engine block and battery heater	0	0	0
HomeLink® Universal Transceiver — Programmable, 3-function, remote controls for garage door opener, and interior/exterior home lighting and security devices			●
Instrument Cluster			
Indicators — Low washer fluid		●	●
Lighting			
Exterior — Fog Lamps			●
Interior — Front courtesy/map		●	●
Remote Keyless Entry — Controls for power door locks, illuminated entry system and panic alarm. Includes 2 transmitters	0	●	●
Seats			
— Front Sage cloth buckets with two-way adjustable front head restraints, reclining seatbacks and 60/40 split-folding seatback	●	●	
— Front Travis cloth buckets with two-way adjustable front head restraints, driver-side manually adjustable lumbar support and reclining seatbacks; rear 60/40 split-folding seatback			●
— Front Sutton tri-star perforated leather-trimmed buckets with 8-way power driver's seat, driver-side manually adjustable lumbar support, passenger seatback map pocket and adjustable front head restraints; rear 60/40 split-folding seatback	0	●	0
Front — 8-way power driver		●	●
Security Group — Includes central locking feature, Sentry Key, [®] and Vehicle Security System; disables HomeLink [™]		0	0
Sentry Key Engine Immobilizer — Theft-deterrent system with encoded key. Includes 2 keys. (Included in Security Group)		P	P
Smoker's Group — Ashtray and lighter	0	0	0
Sound System			
— AM/FM stereo radio with cassette, changer controls and four speakers	●		
— AM/FM stereo radio with CD player and four speakers	0	●	●
— AM/FM stereo radio with cassette, changer controls, in-dash 4-disc CD changer and four speakers		0	0
— Premium sound with 120-watt amplifier and 6 speakers		0	0
Steering Wheel			
— Deluxe	●	●	
— Leather-wrapped			●
Sunroof — Power, with express-open and vent with sliding sunshade		0	0
Tires			
— P205/65TR15 BSW all-season	●	●	
— P205/60TR16 BSW all-season (included with optional 16" cast-aluminum wheels)	P	P	●
— Full-size spare	0	0	
— Full-size spare with matching wheel	0 [®]	0 [®]	0
Transaxle — AutoStick [®] Driver-Interactive Shifter, provides clutchless manual shifting			●
Traveler's Display — Information displays for compass, outside temperature, instant and average fuel economy, estimated distance-to-empty, and secondary trip odometer			●

Standard on SE Coupe



16-inch cast aluminum Riverside wheel optional on SE Coupe



17-inch cast aluminum Clubsport wheel standard on R/T Coupe



17-inch cast aluminum Clubsport wheel with chrome finish* optional on R/T Coupe

*Late Availability



Melrose/Rodeo cloth standard on SE Coupe. Available in Black/Light Gray and Black/Beige



Cole/Regina cloth standard on R/T Coupe. Available in Black/Light Gray and Black/Beige



Royale Leather-trimmed optional on R/T Coupe. Available in Black/Light Gray and Black/Beige.



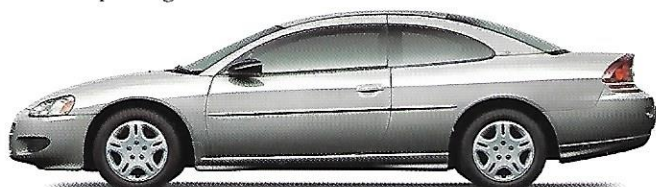
Black



Deep Evergreen Pearl Coat



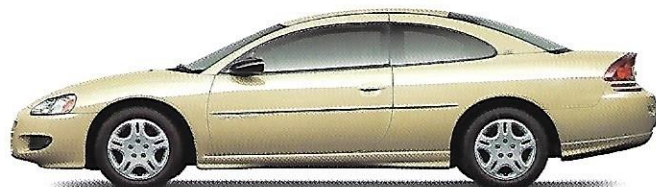
Indy Red



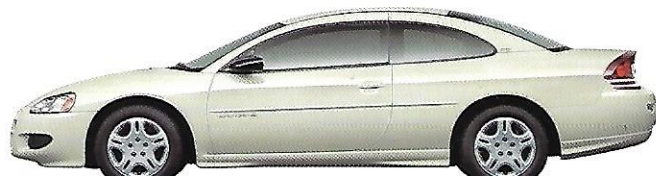
Ice Silver Pearl Coat



Ruby Red Pearl Coat



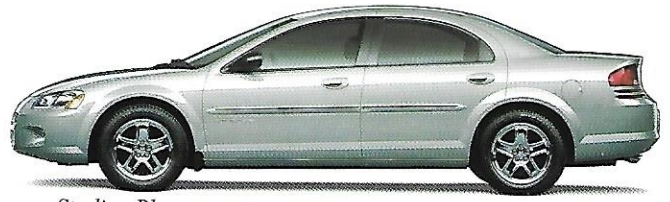
Light Beige Metallic



eels nd trim.



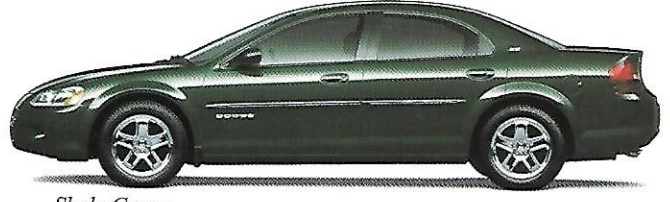
Deep Sapphire Blue



Sterling Blue



Black



Shale Green



Stone White



Taupe Frost



Bright Silver



15-inch Sceptor wheel cover with chrome pockets standard on SE Sedan

Sutton Leather-trimmed in Dark Slate Gray. Optional on ES Sedan



16-inch cast aluminum Indy wheel standard on ES Sedan; available on SE Sedan



16-inch chrome Indy wheel optional on ES Sedan



Travis cloth standard on ES Sedan. Available in Taupe, Sandstone or Dark Slate Gray

Sage cloth standard on SE Sedan. Available in Taupe, Sandstone or Dark Slate Gray



Dark Garnet Red



Inferno Red

Dodge Different.

You won't find the obvious at Dodge. In fact, our designers and engineers pride themselves in exploring previously uncharted territory.

It's a path that began over 10 years ago with the creation of the Viper RT/10 concept car. That concept became a reality. And so did a different approach to the creation of automobiles. Today, all Dodge cars and trucks are created that way. By closely knit teams of talented people from every automotive-related discipline. Their assignment: Find different ways to be better. And drive better. That means producing vehicles that work better, thanks to innovations like minivans that are easier to get into and out of. Pickups that can haul and tow well, in many ways. Sedans that are sleek, yet spacious and exciting to drive. A sport utility that stakes out its own domain. And a sports car that's unrivaled on the road. And on the track. Each one embodies a totally different approach to the tried and true. And, like Dodge, each has become a quickly moving target the competition seeks to emulate.

You can reach us at 888-4-A-DODGE, or on our Web site, www.4adodge.com.