

MALIN'S GARAGE
217 NORTH ST. DELTON, MD.
PHONE 57

The
SILVER ANNIVERSARY
BUICK

THE MASTER SIX

ON THREE WHEELBASES

1904



1929

BUICK MOTOR COMPANY • FLINT, MICHIGAN

Division of General Motors Corporation

In Brief

The SILVER ANNIVERSARY Buick

1904-1929

Specifications

THE BUICK MASTER SIX SEDAN—Five-passenger two-door; 116-inch wheelbase. *Model 20.*

THE BUICK MASTER SIX PHAETON—Five-passenger; 116-inch wheelbase. *Model 25.*

THE BUICK MASTER SIX BUSINESS COUPE—Two-passenger; 116-inch wheelbase. *Model 26.*

THE BUICK MASTER SIX SPECIAL COUPE—Four-passenger; 116-inch wheelbase. *Model 26S.*

THE BUICK MASTER SIX SEDAN—Five-passenger four-door; 116-inch wheelbase. *Model 27.*

THE BUICK MASTER SIX CLOSE-COUPLED SEDAN—Five-passenger four-door; 121-inch wheelbase. *Model 41.*

THE BUICK MASTER SIX SPORT ROADSTER—Four-passenger; 121-inch wheelbase. *Model 44.*

THE BUICK MASTER SIX BUSINESS COUPE—Two-passenger; 121-inch wheelbase. *Model 46.*

THE BUICK MASTER SIX SPECIAL COUPE—Four-passenger; 121-inch wheelbase. *Model 46S.*

THE BUICK MASTER SIX SEDAN—Five-passenger four-door; 121-inch wheelbase. *Model 47.*

THE BUICK MASTER SIX TOURING—Seven-passenger; 129-inch wheelbase. *Model 49.*

THE BUICK MASTER SIX SEDAN—Seven-passenger four-door; 129-inch wheelbase. *Model 50.*

THE BUICK MASTER SIX LIMOUSINE—Seven-passenger; 129-inch wheelbase. *Model 50L.*

THE BUICK MASTER SIX CLOSE-COUPLED SEDAN—Five-passenger four-door; 129-inch wheelbase. *Model 51.*

THE BUICK MASTER SIX DE LUXE CONVERTIBLE COUPE—Four-passenger; 129-inch wheelbase. *Model 54CC.*

THE BUICK MASTER SIX SPORT PHAETON—Five-passenger; 129-inch wheelbase. *Model 55.*

THE BUICK MASTER SIX SEDAN—Five-passenger four-door; 129-inch wheelbase. *Model 57.*

THE BUICK MASTER SIX COUPE—Five-passenger; 129-inch wheelbase. *Model 58.*

ENGINES—116-inch wheelbase models, 74 h.p., Buick Valve-in-Head, six-cylinder, triple sealed. Bore $3\frac{1}{8}$ inches. Stroke $4\frac{5}{8}$ inches. Piston displacement 239 cubic inches. Maximum car speed well over 70 miles an hour. *Rear axle ratios*—Models 20 and 27—4.9 to 1.

Model 25—4.454 to 1. Models 26 and 26S—4.636 to 1. *Wheels*—Wood artillery type, 20-inch rim. *Tires*—30 x 5.50-inch low pressure. *Gasoline tank capacity*—16 gallons. *Turning circle*—38 feet.

ENGINES—121 and 129-inch wheelbase models, 90½ h.p., Buick Valve-in-Head six-cylinder, triple sealed. Bore $3\frac{3}{8}$ inches. Stroke 5 inches. Piston displacement 309 cubic inches. Maximum car speed well over 75 miles an hour. *Rear axle ratios*—Models 41, 47, 50, 50L, 51, 57 and 58—4.636 to 1. Models 46, 46S, 49 and 54CC—4.454 to 1. Models 44 and 55—4.077 to 1. *Wheels*—Wood artillery type, 20-inch rim. *Tires*—32 x 6.50-inch low pressure. *Gasoline tank capacity*—19 gallons. *Turning circle*—121-inch wheelbase—42 feet; 129-inch wheelbase—44 feet.

ALL MODELS—New instrument panel; new steering wheel and controls; new tail lamp, mounted at side; front compartments completely trimmed, rubber mats for floor; hydraulic shock absorbers, front and rear; centralized chassis lubrication; adjustable steering wheel; vibrator horn; hydrostatic gasoline gauge, water temperature gauge on instrument panel; lock mounted on steering post; combination tail lamp, stop lamp, and back-up lamp; four-wheel brakes; four low pressure tires; controllable beam headlights, with control switch on top of steering wheel; air cleaner; oil filter; gasoline strainer; crankcase ventilator; new type tire carrier for one tire only, with extra demountable rim; double screw type jack; high pressure grease gun; tool kit; pump; rear vision mirror; dual lighting of instrument panel and front compartment.

CLOSED MODELS—Adjustable driving seats except in Model 50L; side cowl ventilators; new type luxury seat cushions; nickel-finished foot rest in rear compartments; high grade carpets; double-blade, electric windshield wiper. Model 54CC double-blade wiper not electrically operated.

OPEN MODELS—Full, ventilating windshield, upper part adjustable, and whole shield folds forward if desired; side, cowl ventilators except on Model 25; special finish, leather upholstery; neat, leather robe straps; natural wood bows for tops; tailored dust cover; side curtains with large pyralin lights, fitting conveniently into large door pockets; rear deck compartments fully trimmed; rubber mats for floor; single-blade wiper not electrically operated.

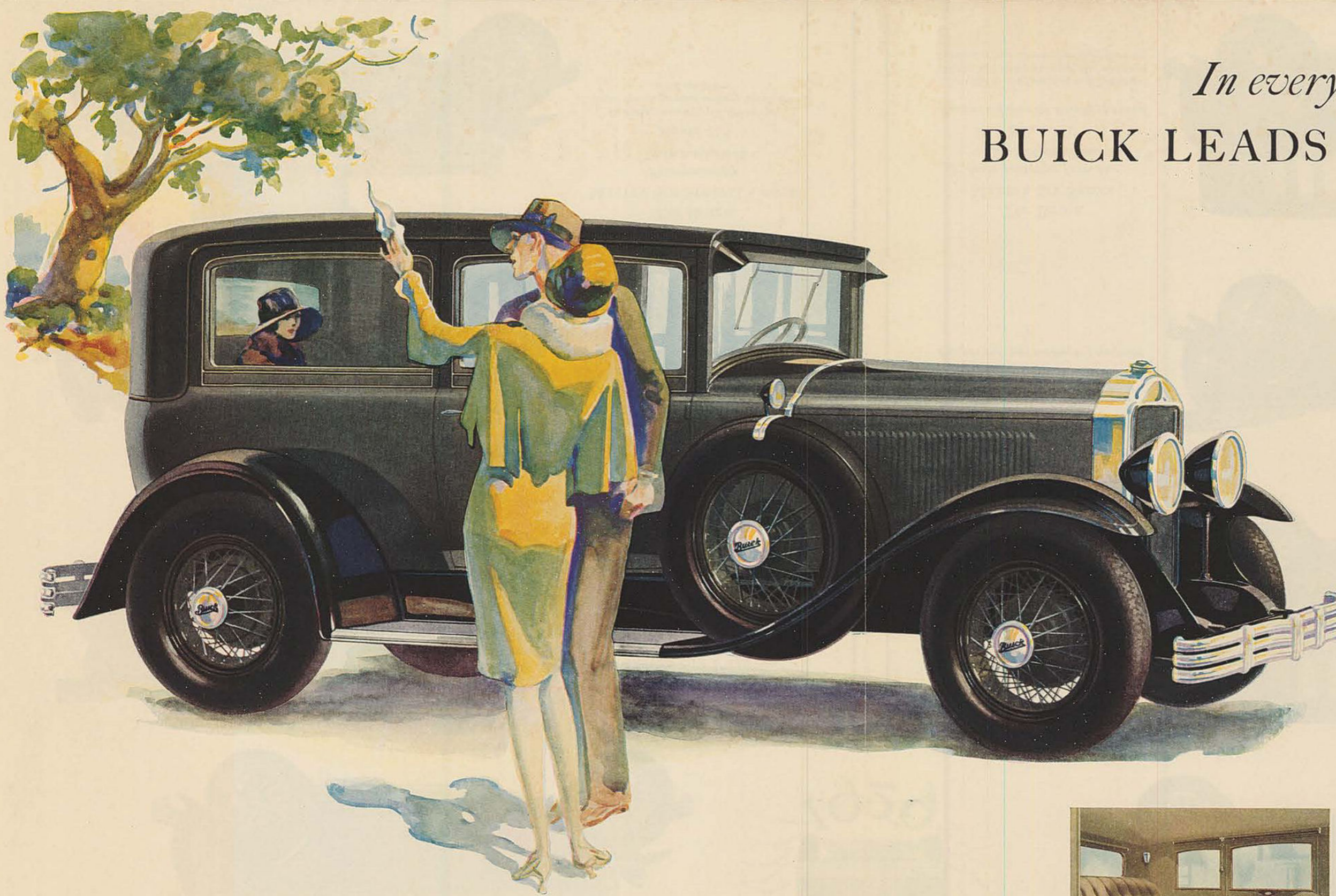
SPECIAL EQUIPMENT—Demountable wood, wire, and disc wheels; fender wells for spare tires; special locks and supports for fender well mountings; folding trunk racks; chrome-finished bumpers of special design; spare tires are special equipment.

*All statements in this folder have been carefully checked
but are subject to correction*

BUICK MOTOR COMPANY · FLINT, MICHIGAN

Division of General Motors Corporation

In everything
BUICK LEADS THE WORLD



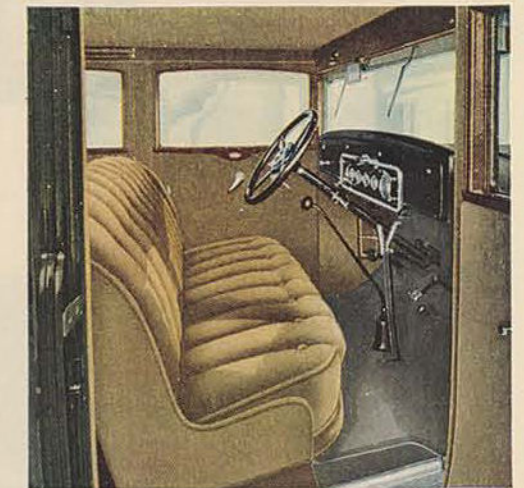
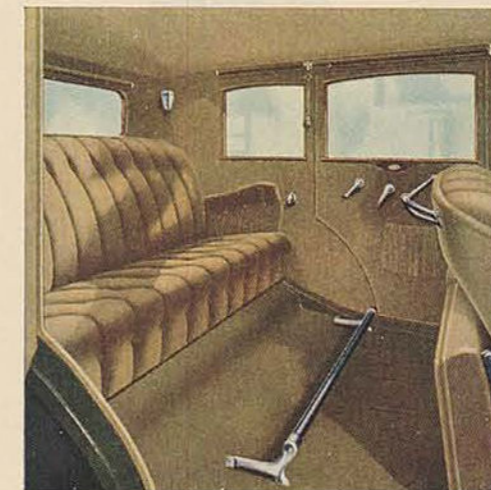
Interiors that capture
the beauty of
gracious homes

*T*HERE is rich, enduring beauty, in the interiors of the Silver Anniversary Buick, that sets these cars apart as truly distinctive. Every detail is in harmony, and every detail bespeaks ease, comfort, luxury—the true enjoyment that every motorist seeks in a motor car. The wide, deep seats are luxuriously cushioned and built over special type springs. The upholstery and the lining are of an unusually rich texture. Walnut finish trim, and body hardware of special Buick design, add just the right note of contrast to give these cars the gracious, enduring charm that distinguishes the interiors of fine homes

*H*ERE is beauty—unmatched in the motoring world. Bodies that are masterpieces by Fisher. Color harmonies that keep their rich, lustrous charm for tens of thousands of miles—smartness, distinction, luxury.

But these are not all. In mechanical construction, too, Buick leads the world. Lightning-flash get-away and

acceleration; power for the steepest hill; dependability; and a sturdiness that makes the last mile on the speedometer as wonderful as the first. These are the qualities that, combined with unrivaled beauty, make the Silver Anniversary Buick the greatest value that the world has ever seen.

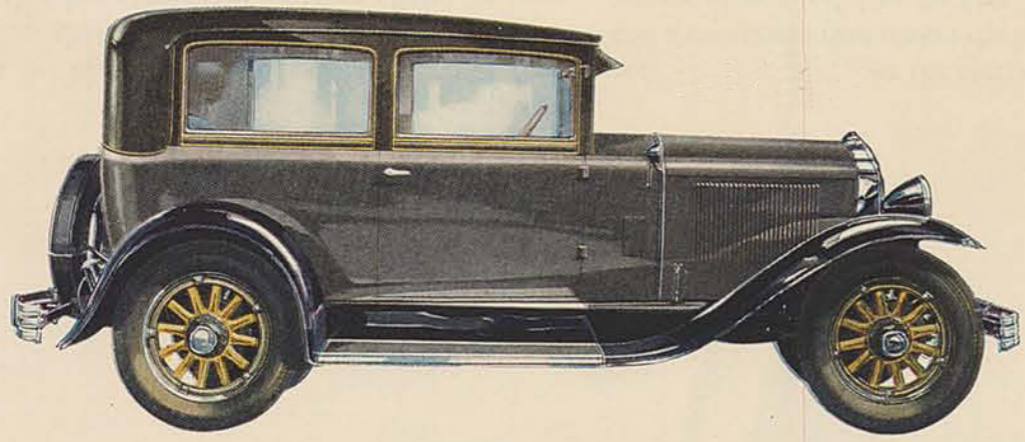


Always noted for luxurious roominess, the Buick is now wider still. It affords riding comfort never before equaled

More head room is another characteristic of the Silver Anniversary Buick. Every mile in a Buick is a luxury mile

The BUICK
MASTER SIX SEDAN
Five-passenger two-door
116-inch wheelbase
MODEL 20

Bumpers and spare tire are extra equipment

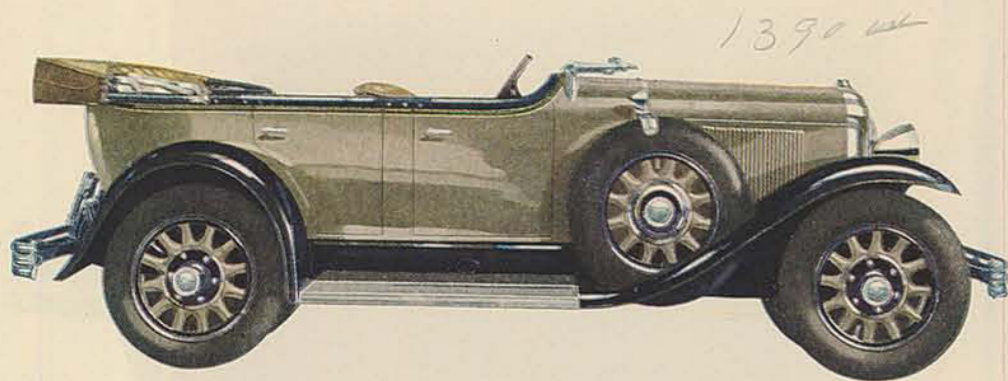
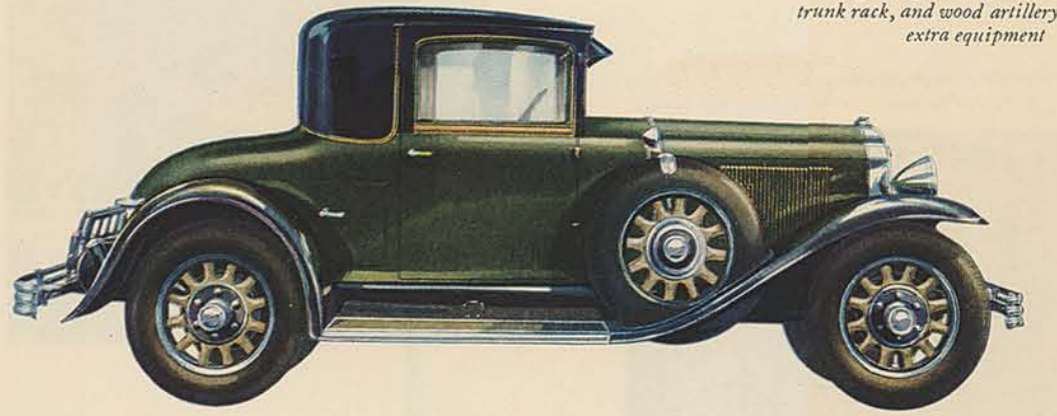


THE SILVER ANNIVERSARY BUICK



The BUICK
MASTER SIX SPECIAL COUPE
Four-passenger
121-inch wheelbase
MODEL 46S

Bumpers, spare tire, side tire carrier,
trunk rack, and wood artillery wheels are
extra equipment

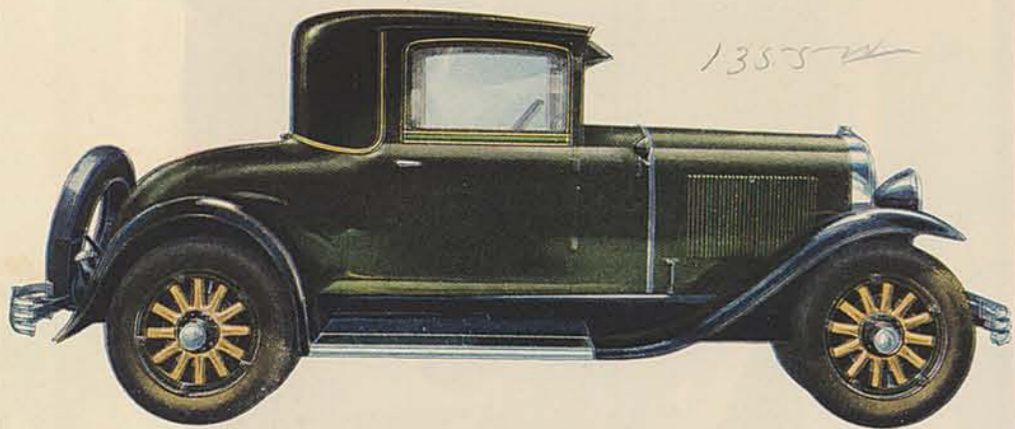
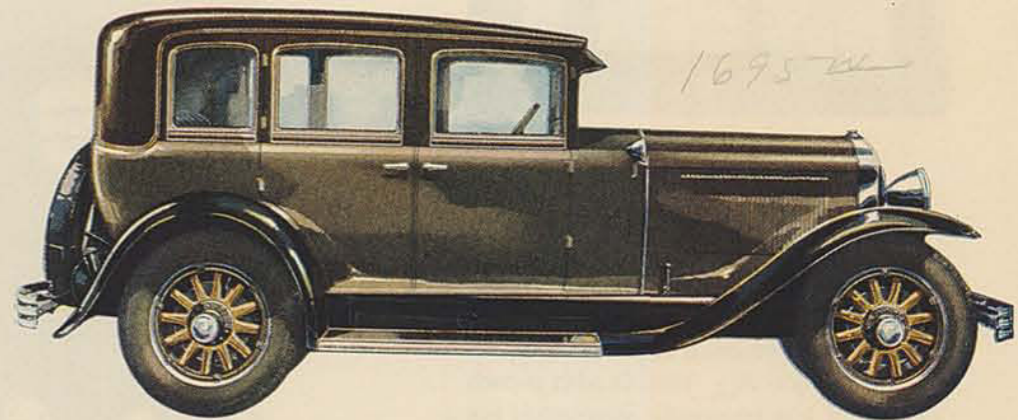


The BUICK
MASTER SIX PHAETON
Five-passenger
116-inch wheelbase
MODEL 25

Bumpers, spare tire, side tire carrier, trunk
rack, and wood artillery wheels are
extra equipment

The BUICK
MASTER SIX SEDAN
Five-passenger four-door
121-inch wheelbase
MODEL 47

Bumpers and spare tire are extra equipment

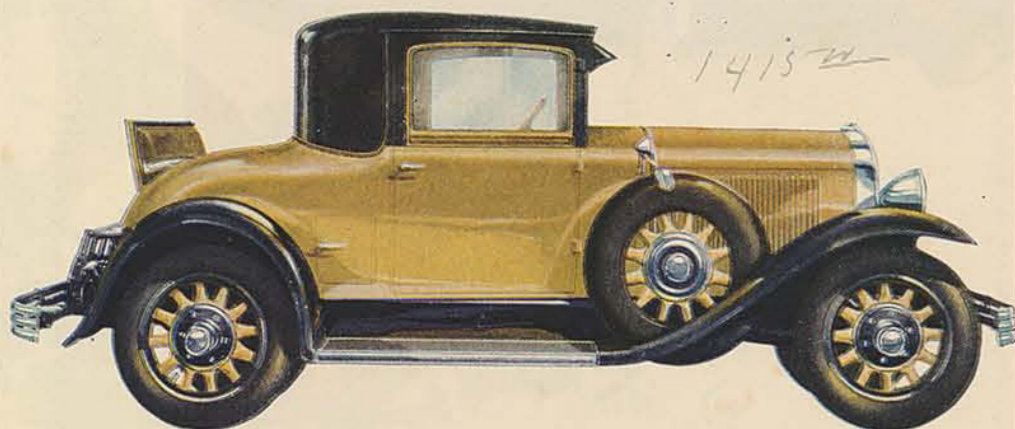
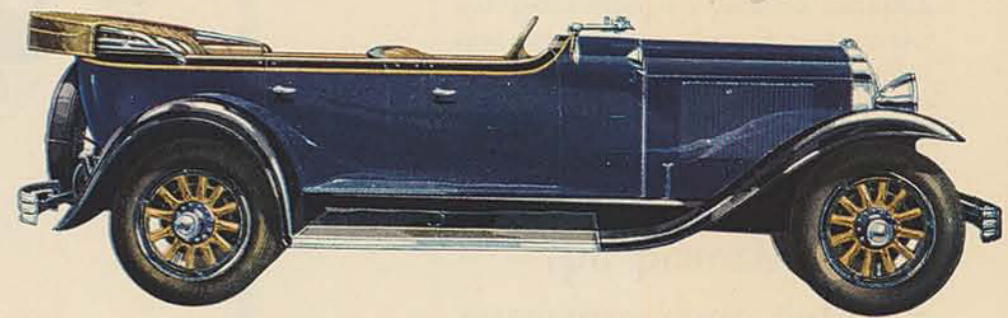


The BUICK
MASTER SIX BUSINESS COUPE
Two-passenger
116-inch wheelbase
MODEL 26

Bumpers and spare tire are extra equipment

The BUICK
MASTER SIX TOURING
Seven-passenger
129-inch wheelbase
MODEL 49

Bumpers and spare tire are extra equipment



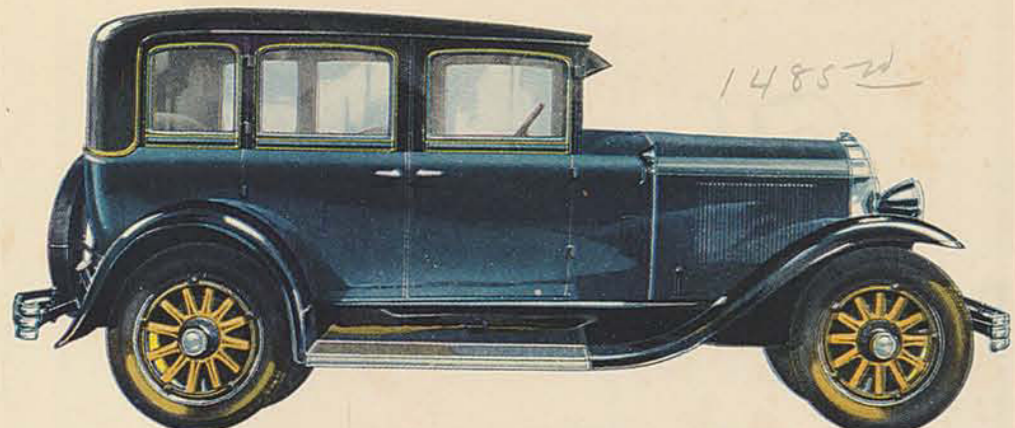
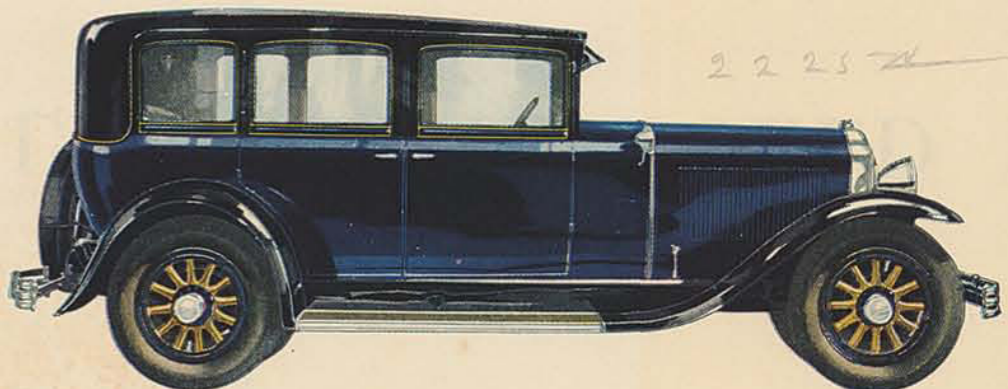
The BUICK
MASTER SIX SPECIAL COUPE
Four-passenger
116-inch wheelbase
MODEL 26S

Bumpers, spare tire, side tire carrier,
trunk rack, and wood artillery wheels are
extra equipment

The BUICK
MASTER SIX SEDAN
Seven-passenger four-door
129-inch wheelbase
MODEL 50

Bumpers and spare tire are extra equipment

This model is also furnished as a Limousine
(Model 50L) with a glass partition which can
be raised or lowered in the back of the front seat

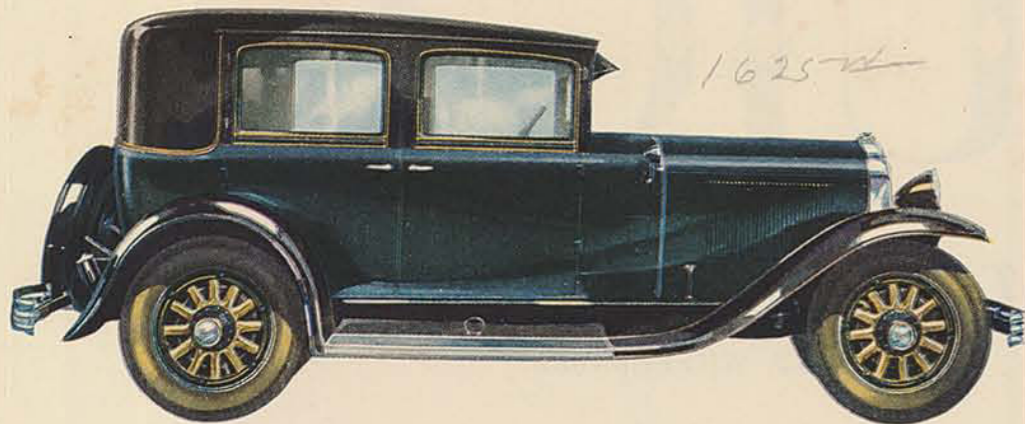
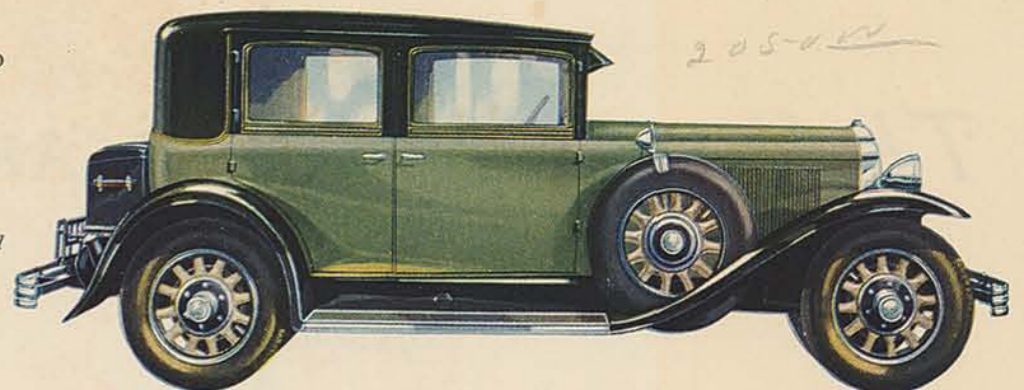


The BUICK
MASTER SIX SEDAN
Five-passenger four-door
116-inch wheelbase
MODEL 27

Bumpers and spare tire are extra equipment

The BUICK
MASTER SIX CLOSE-COUPLED
SEDAN
Five-passenger four-door
129-inch wheelbase
MODEL 51

Bumpers, spare tire, side tire carrier, trunk,
and wood artillery wheels are extra equipment

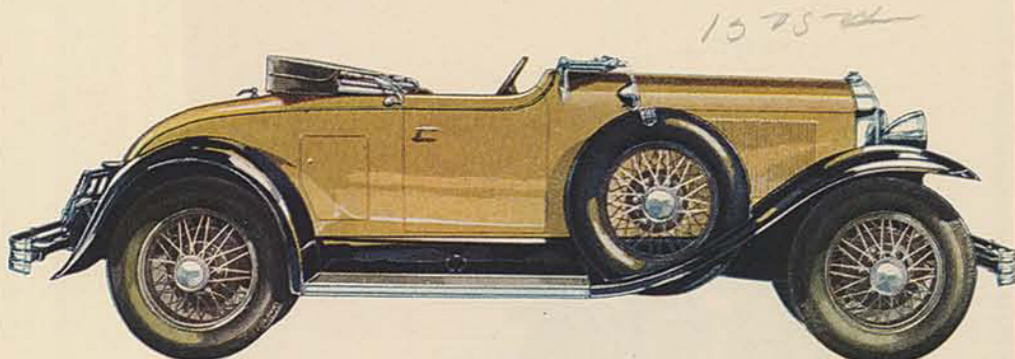
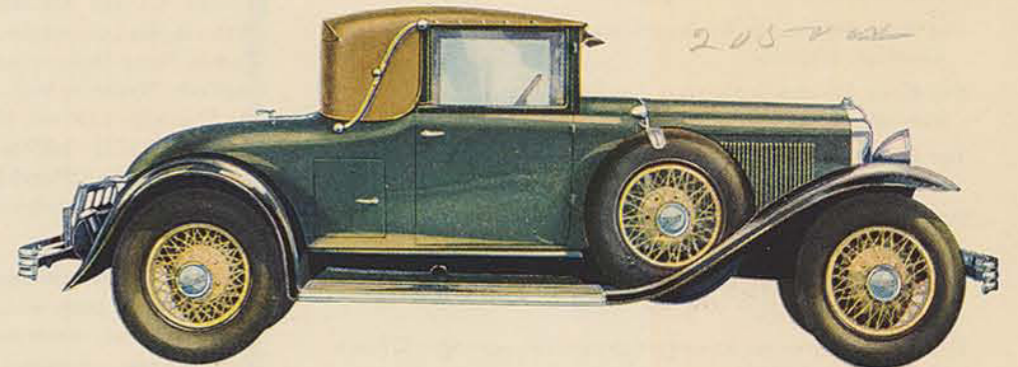


The BUICK
MASTER SIX CLOSE-COUPLED
SEDAN
Five-passenger four-door
121-inch wheelbase
MODEL 41

Bumpers and spare tire are extra equipment

The BUICK
MASTER SIX DELUXE
CONVERTIBLE COUPE
Four-passenger
129-inch wheelbase
MODEL 54CC

Bumpers, spare tire, side tire carrier, trunk
rack, and wire wheels are extra equipment

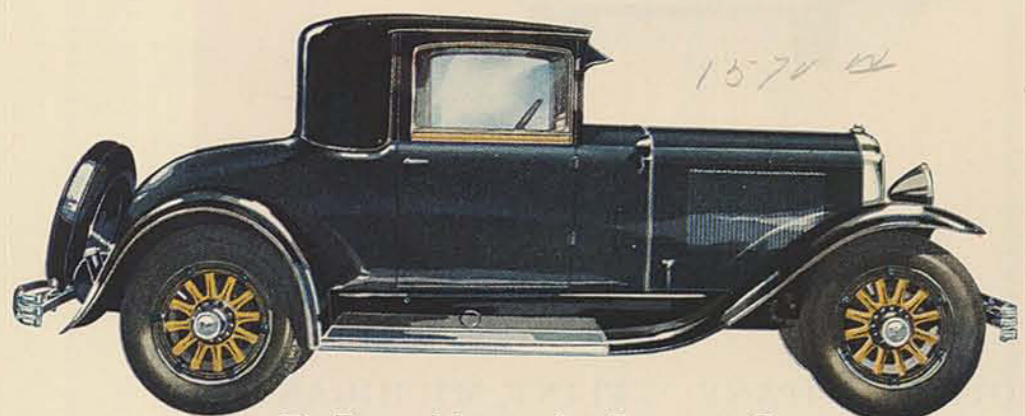


The BUICK
MASTER SIX SPORT ROADSTER
Four-passenger
121-inch wheelbase
MODEL 44

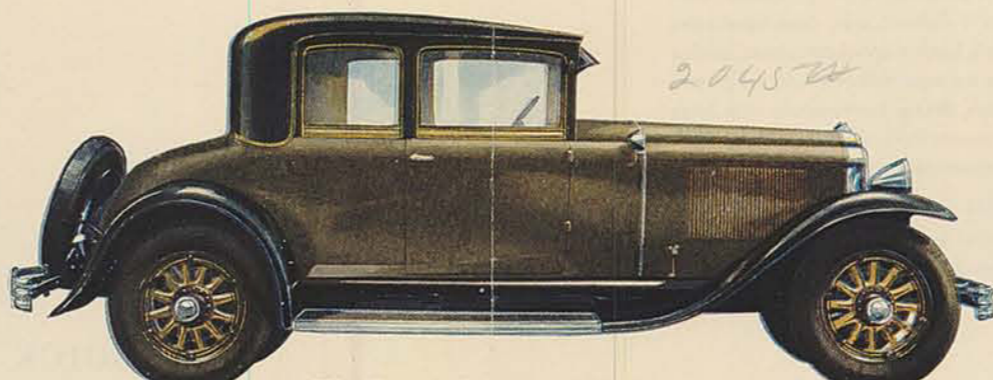
Bumpers, spare tire, side tire carrier, trunk rack,
and wire wheels are extra equipment

The BUICK
MASTER SIX SPORT PHAETON
Five-passenger
129-inch wheelbase
MODEL 55

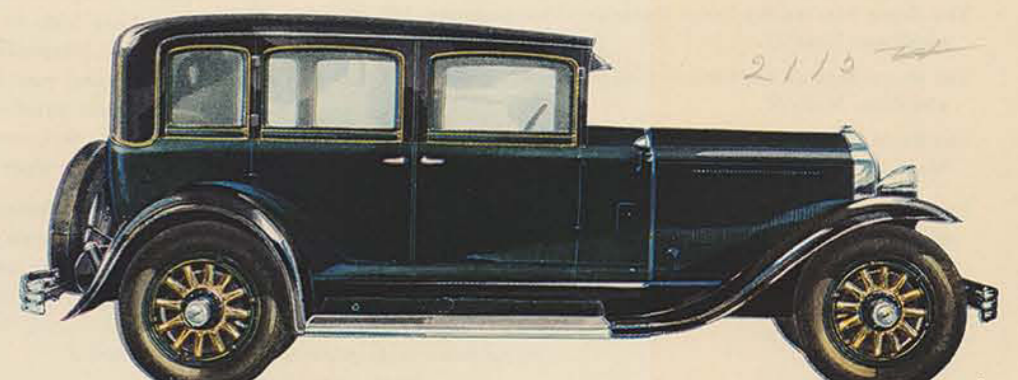
Bumpers, spare tire, side tire carrier, and
disc wheels are extra equipment



The BUICK MASTER SIX BUSINESS COUPE
Two-passenger · 121-inch wheelbase
MODEL 46
Bumpers and spare tire are extra equipment



The BUICK MASTER SIX COUPE
Five-passenger · 129-inch wheelbase
MODEL 58
Bumpers and spare tire are extra equipment



The BUICK MASTER SIX SEDAN
Five-passenger four-door · 129-inch wheelbase
MODEL 57
Bumpers and spare tire are extra equipment

WHEN BETTER AUTOMOBILES ARE BUILT, BUICK WILL BUILD THEM