

The
Outstanding Chevrolet
of Chevrolet History
- a Six in the price range of the four!

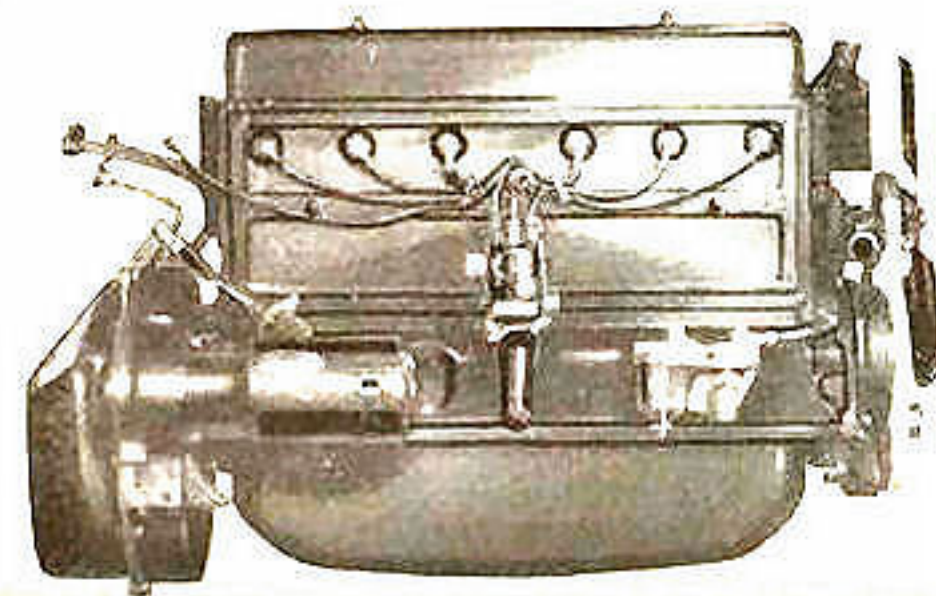
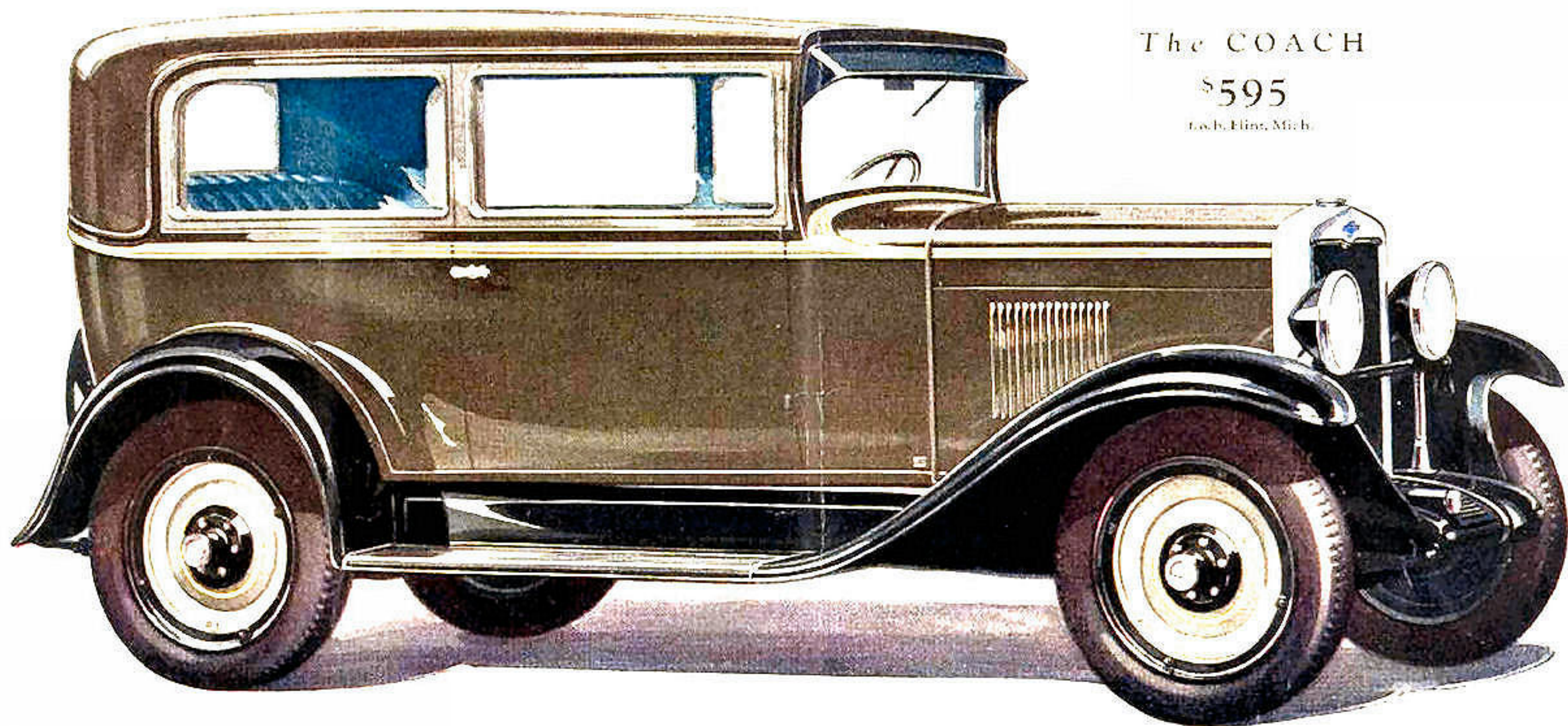
THE OUTSTANDING CHEVROLET OF CHEVROLET HISTORY

a Six in the price range of the Four

The COACH

\$595

Each, Flint, Mich.



Chevrolet's New Six-Cylinder fully enclosed valve-in-head engine

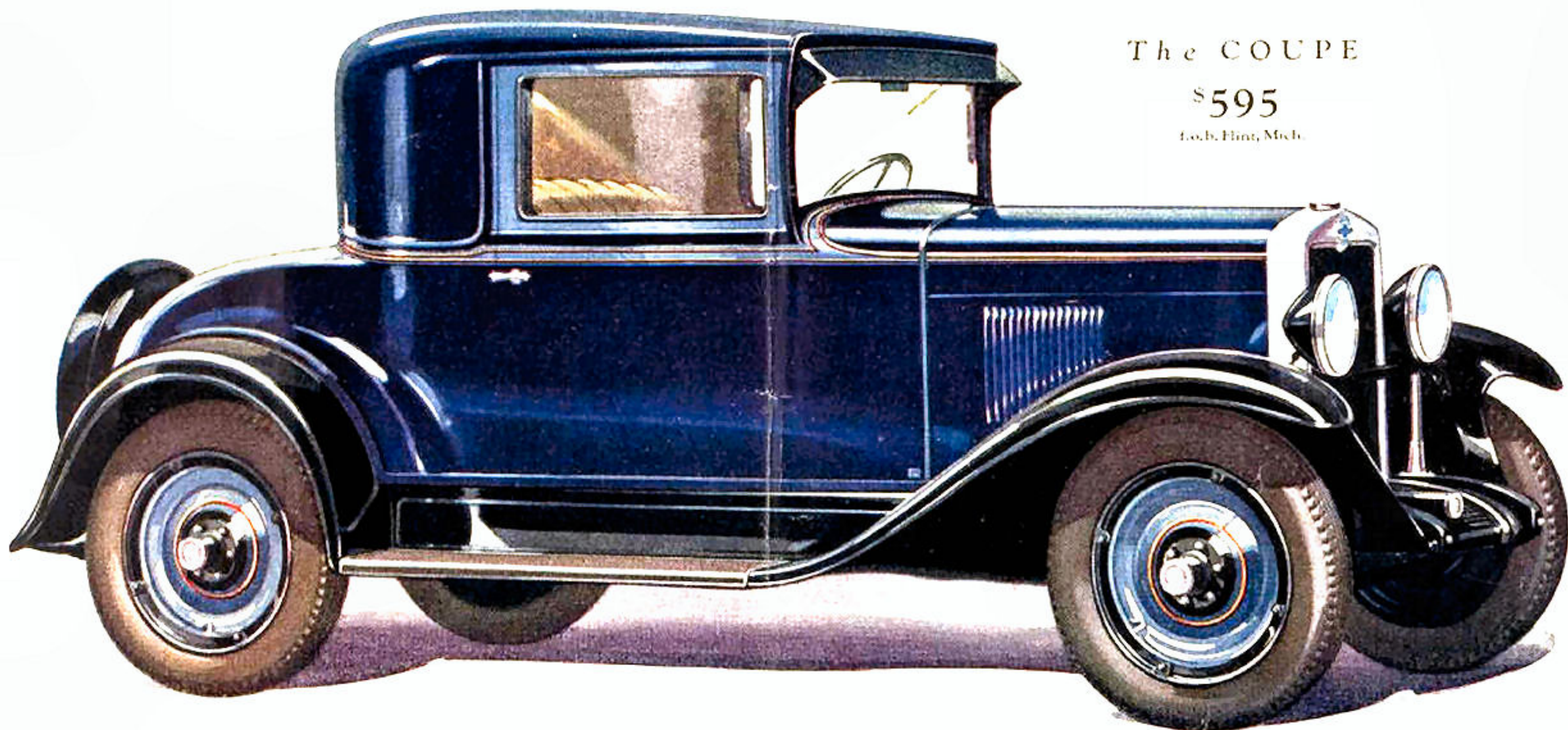
This new six-cylinder engine brings to you the latest and best in modern design and construction. It has a high compression non-detonating head. It develops unusual power at comparatively low engine speeds and has a total displacement of 194 cubic inches. It is equipped with a new sturdy crankshaft, new camshaft designed for unusually quiet operation, fabric timing gear, air cleaner, crankcase ventilating system, improved lubricating system, new fuel pump and filter, and large bearings throughout.



Chevrolet's New Rugged Crankshaft

Is of sturdy construction and has large efficiently lubricated main and connecting rod bearings. It is carefully balanced and made of the finest crankshaft steel.

THE OUTSTANDING CHEVROLET OF CHEVROLET HISTORY
a Six in the price range of the Four



The COUPE

\$595

f.o.b. Flint, Mich.



Improved Method of Lubricating Connecting Rods

Connecting rods are equipped with a large scoop on bottom, which dips oil from a trough in the oil pan and thoroughly lubricates the bearings.

New Gasoline Pump and Filter



A new gasoline pump, driven by the camshaft, pumps the gasoline to the carburetor. A gasoline filter built in as part of the gasoline pump insures only clean gasoline reaching the carburetor and engine.

New Accelerating Pump

When you step on the accelerator of your Chevrolet car suddenly—the new accelerating pump forces a small quantity of gasoline into the well of the carburetor. This extra gasoline gives you more power the instant you need it.

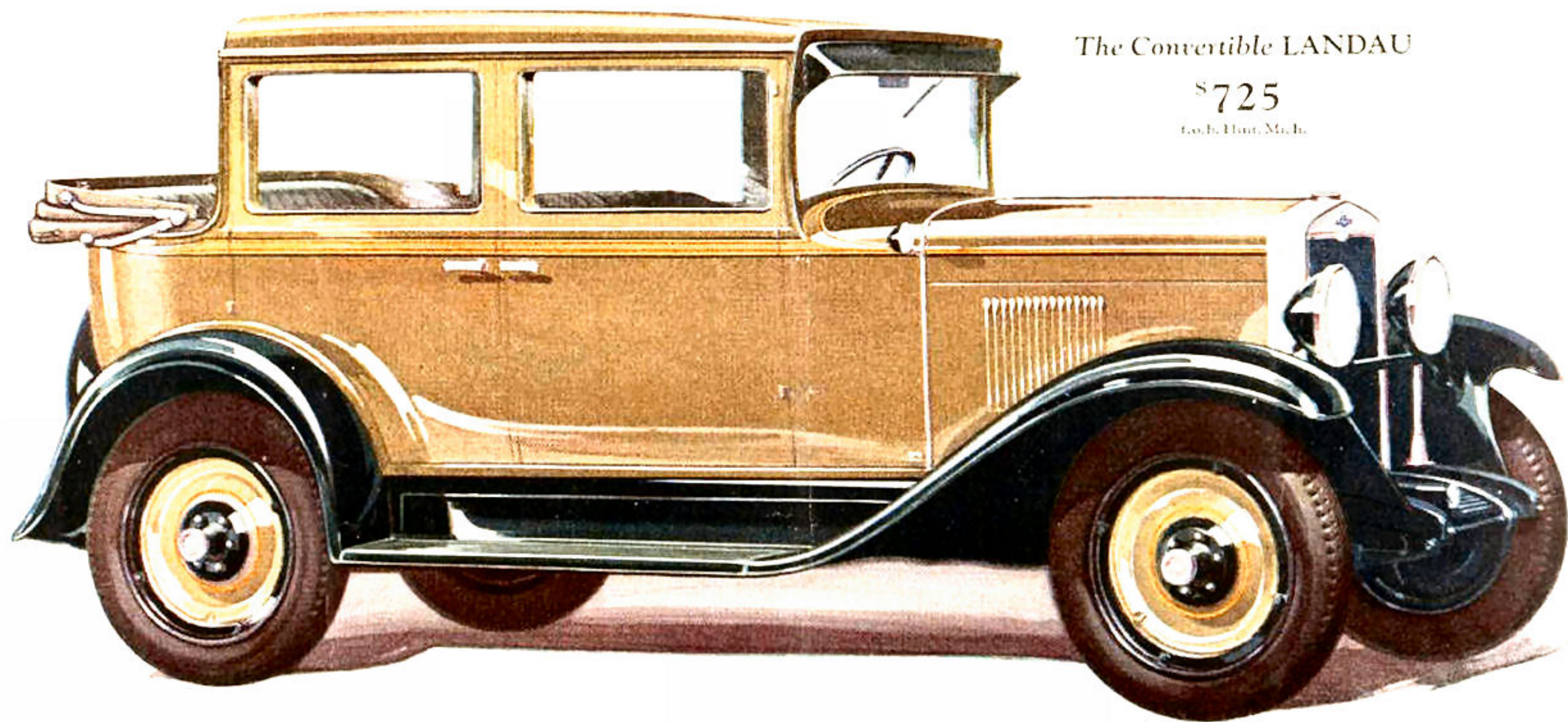


THE OUTSTANDING CHEVROLET OF CHEVROLET HISTORY
- a Six in the price range of the Four

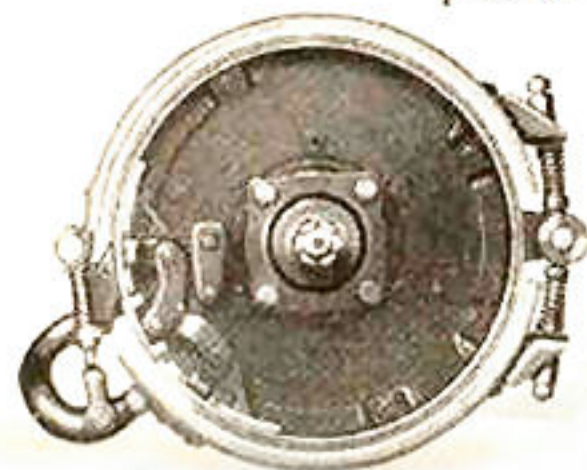
The Convertible LANDAU

\$725

Coch. Hist. Mich.



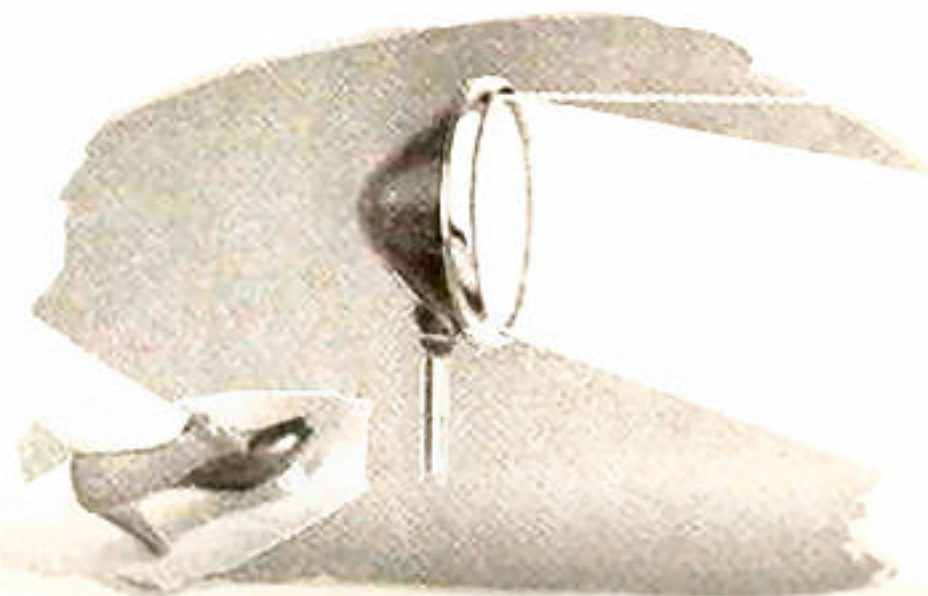
New Improved Four-wheel Brakes positive-safe-quiet



The service brakes on the rear wheels are provided with a simple adjustment at the rear of the drum. Semi-moulded lining insures quiet uniform application of brakes. The separate emergency brakes are of the internal expanding type controlled by the emergency brake lever. Non-locking internal expanding brakes on front are specially designed to make steering easy.

New Two-Beam Head Lamps

Instead of "dimming" your lights—you get the same effect by changing the angle of the light beam with a foot control switch located at the left of the clutch pedal. A parking light is located at the top of the head lamp reflector on the coach, sedan, coupe, phaeton and roadster. The cabriolet and landau are fitted with cowl parking lights.

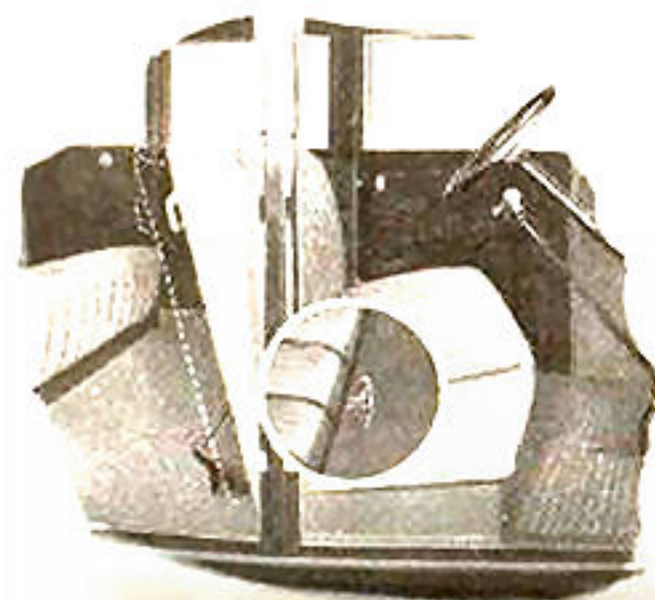
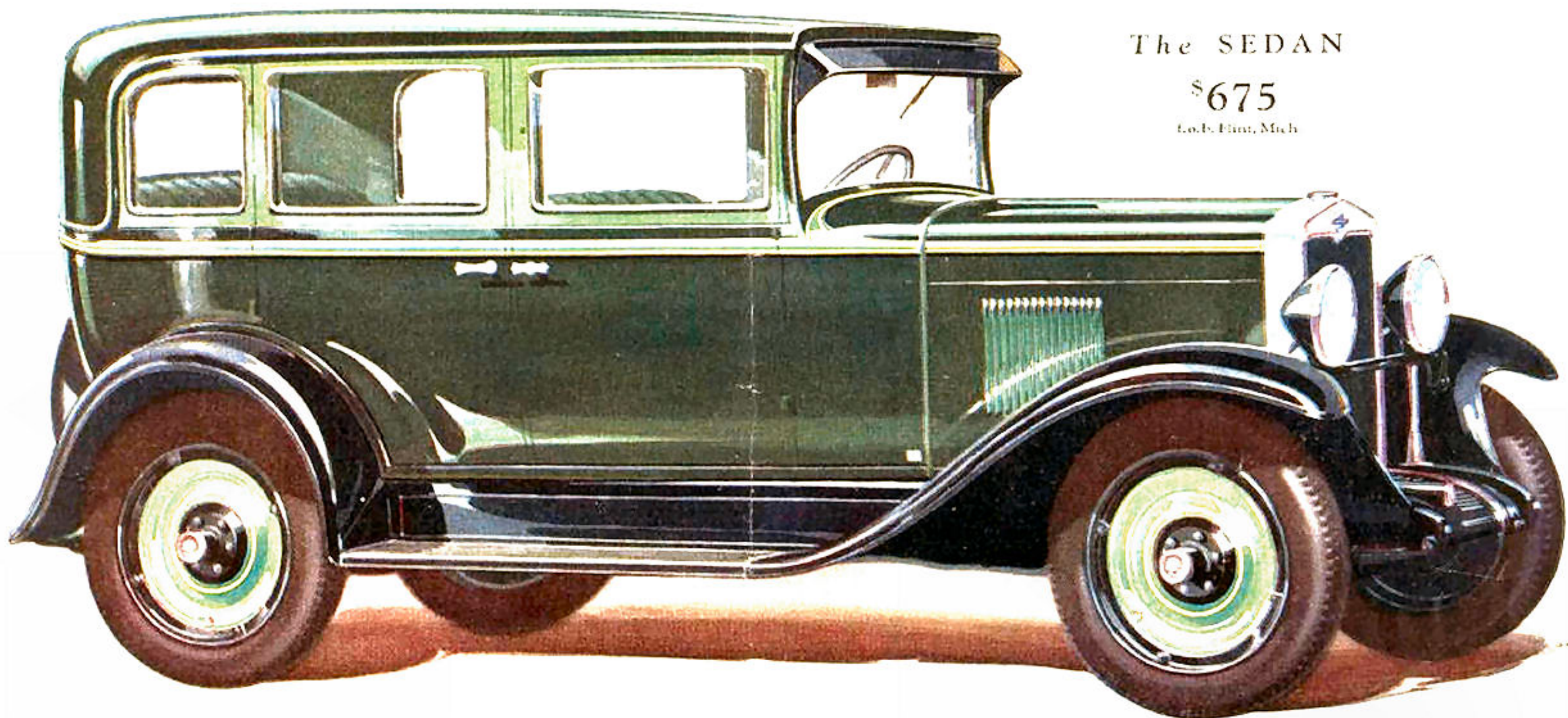


THE OUTSTANDING CHEVROLET OF CHEVROLET HISTORY
- a Six in the price range of the Four

The SEDAN

\$675

L.O.B. Flint, Mich.



Adjustable Driver's Seat

The driver's seat in all closed models is adjustable by means of a regulator. All closed models are equipped with Ternstedt window regulators and remote door controls.



Complete Instrument Panel

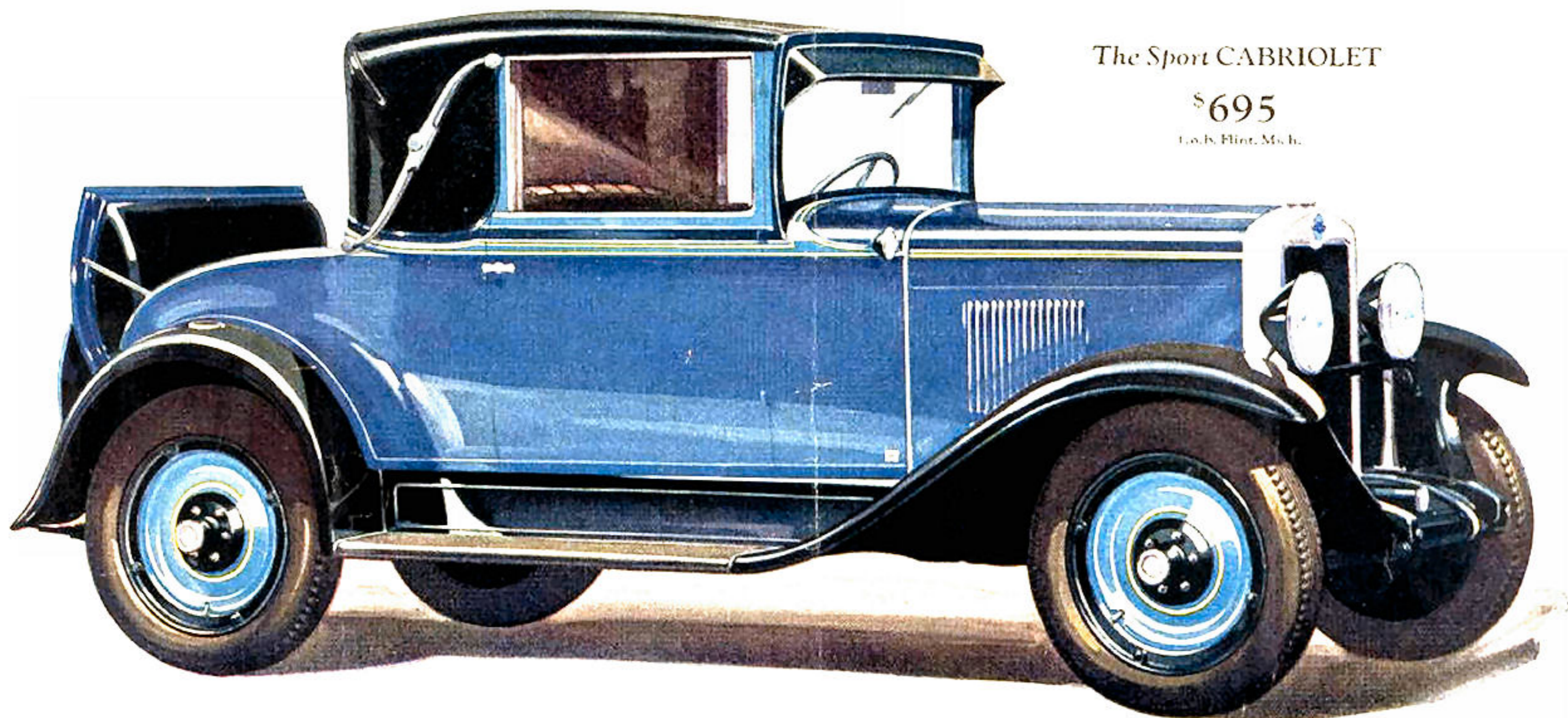
Includes choke, gas and spark controls, ignition switch, water temperature indicator, speedometer, oil gauge, ammeter and electro lock.

New Steering Gear

The new rubber covered steering wheel with horn button in center together with Chevrolet's semi-reversible steering gear with solid steel shaft makes the car safe and easy to handle.



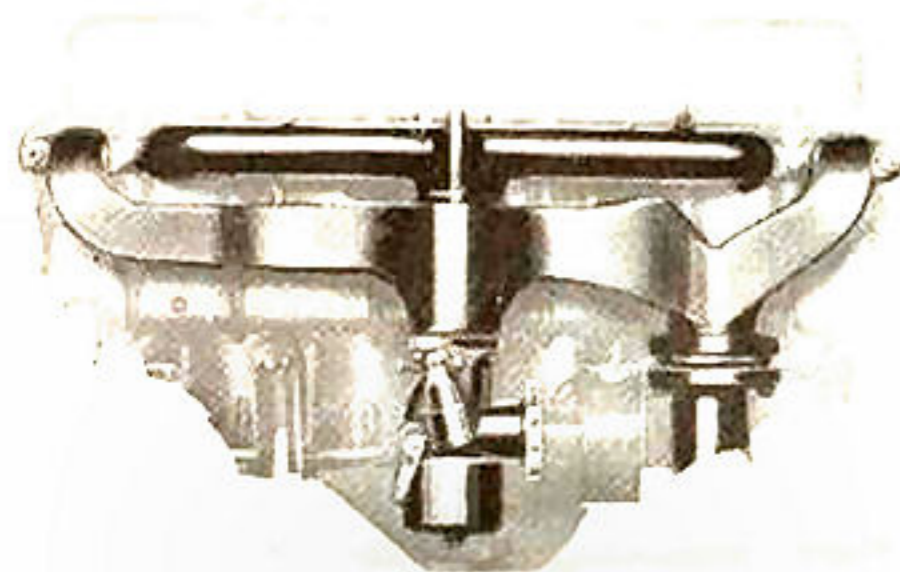
THE OUTSTANDING CHEVROLET OF CHEVROLET HISTORY
- a Six in the price range of the Four



The Sport CABRIOLET

\$695

L. & S. Flint, Mich.



New Hot-Spot Manifold

Gas passes thru the heated exhaust manifold. This feature helps to vaporize the gas so as to obtain the maximum power from it. Note that there are three intake and four exhaust ports and that both intake and exhaust manifolds are located on the same side of the motor.

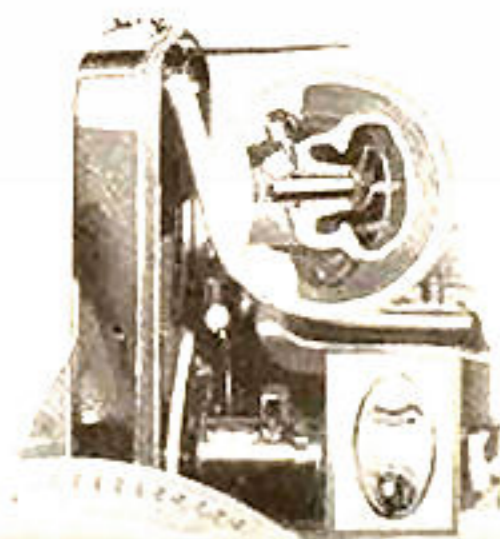


Rocker Arm Lubrication

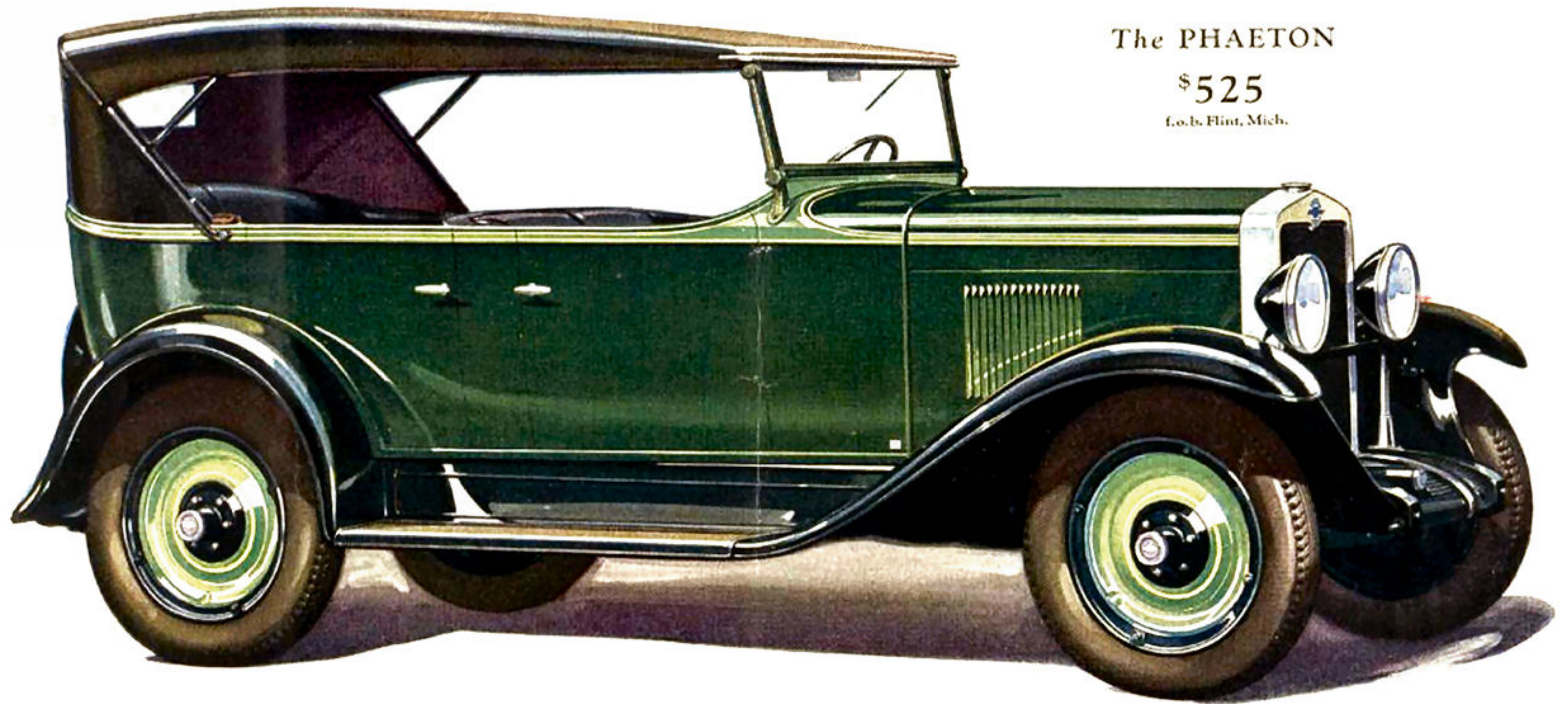
Quiet valve operation is obtained by thorough automatic lubrication of all valve operating parts. The oil pump delivers an ample quantity of oil to the valve mechanism.

New Improved Cooling System

The new Chevrolet is provided with a large Harrison honey-comb radiator, water pump and fan. The improved water pump assures constant circulation and efficient cooling at all engine speeds. An electrically controlled water temperature indicator is neatly mounted on the instrument panel.



THE OUTSTANDING CHEVROLET OF CHEVROLET HISTORY
- a Six in the price range of the Four



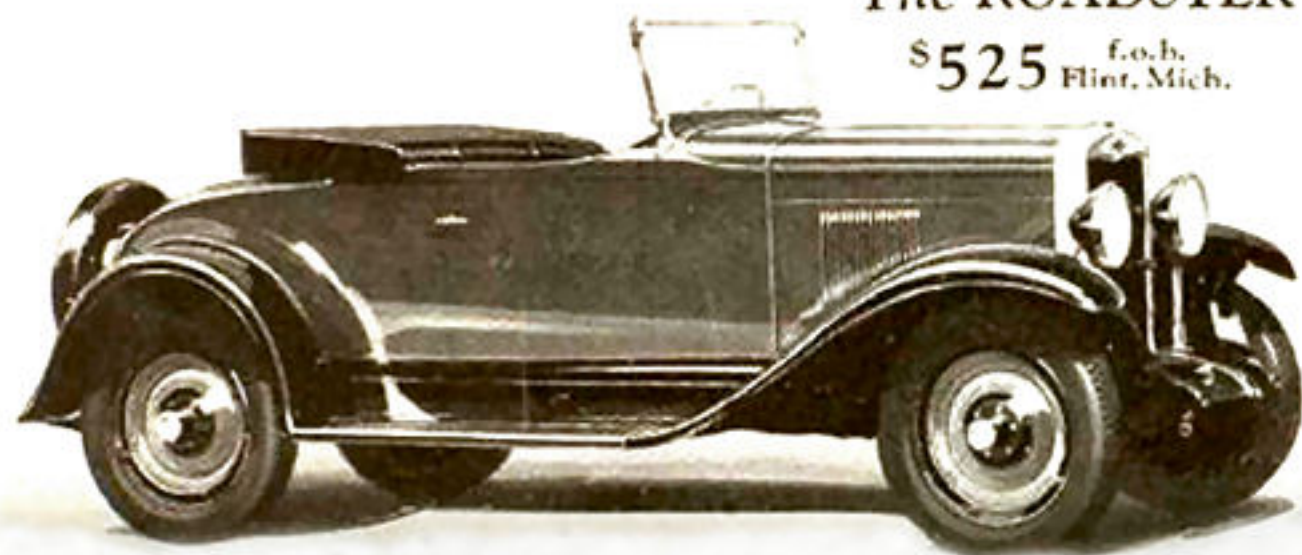
The PHAETON

\$525

f.o.b. Flint, Mich.

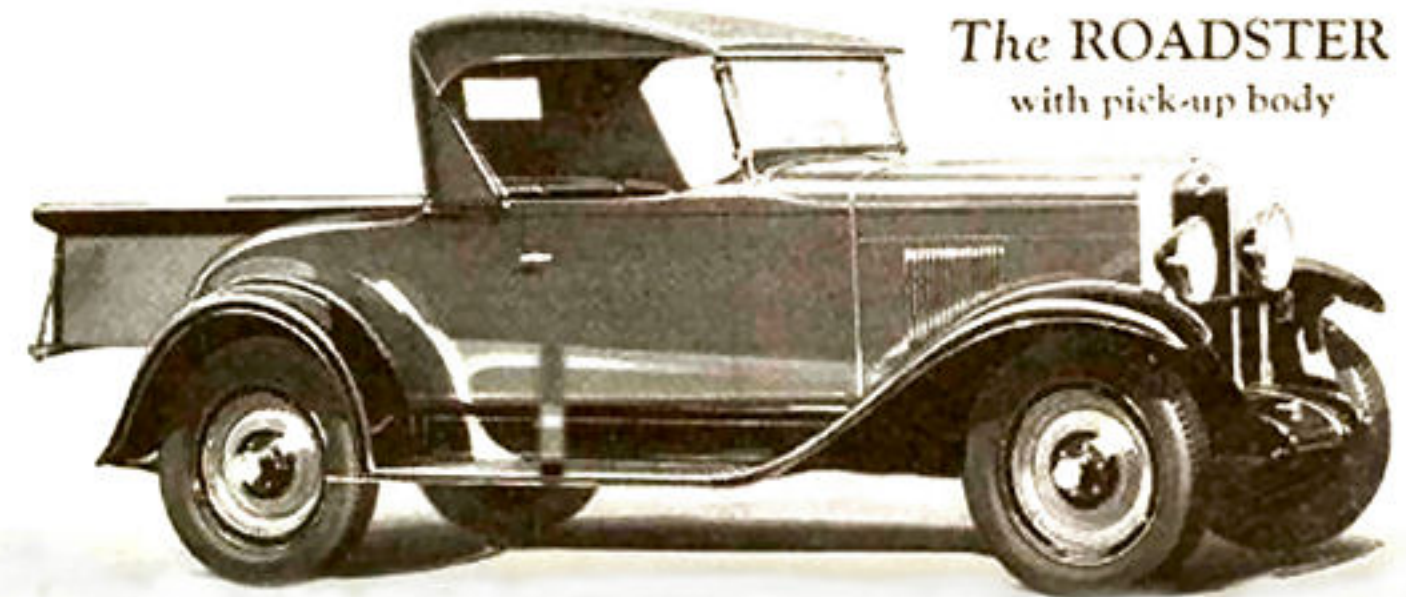
The ROADSTER

\$525 f.o.b.
Flint, Mich.



The ROADSTER

with pick-up body



THE OUTSTANDING CHEVROLET OF CHEVROLET HISTORY
- a Six in the price range of the Four!

SPECIFICATIONS

MOTOR: Six-cylinder, valve-in-head type; $3\frac{3}{16}$ " bore, $3\frac{3}{4}$ " stroke.

CYLINDERS: Cast en bloc (including upper half of crankcase). Head detachable.

VALVES: $1\frac{1}{8}$ " diameter.

CONNECTING ROD BEARINGS: 2" diameter, $1\frac{3}{8}$ " long.

CRANKSHAFT BEARINGS: Front, $1\frac{1}{4}$ " diameter, $1\frac{3}{4}$ " long; center 2" diameter, 2" long; rear, $2\frac{1}{16}$ " diameter, $2\frac{1}{8}$ " long.

CAMSHAFT BEARINGS: Front, $1\frac{1}{8}$ " diameter, $1\frac{1}{8}$ " long; center, $1\frac{3}{8}$ " diameter, $1\frac{1}{8}$ " long; rear, $1\frac{5}{8}$ " diameter, $1\frac{3}{8}$ " long.

OILING SYSTEM: Splash, vane-type pump in crankcase, individual oil pockets; oil pressure gauge on instrument board.

CARBURETOR: Carter, with accelerating pump and venturi choke. AC air cleaner.

FUEL: Mechanical fuel pump; 11-gallon tank in rear of all passenger car models; gasoline gauge on tank.

IGNITION: Delco-Remy, with high-tension wires, waterproofed.

STARTER AND GENERATOR: Delco-Remy.

TRANSMISSION: Selective type, sliding gear, three speeds forward and one reverse—unit power plant construction.

INSTRUMENT PANEL: Equipped with ammeter, oil gauge, speedometer, theft-proof ignition lock, lighting switch, heat indicator carburetor choke, spark and throttle control, automatic windshield wiper control. Indirectly lighted.

CLUTCH: Dry single-plate type, completely enclosed. Requires no lubrication.

COOLING: Large Harrison honeycomb radiator with water pump and fan.

FRONT AXLE: Drop-forged "I" beam. Four New Departure ball-bearings in wheels.

REAR AXLE: Semi-floating type. One-piece banjo-type pressed steel housing. Differential and driving gears in unit with propeller shaft. Large rear cover with oil deflector for inspection and adjustment. Six heavy-duty New Departure annular ball-bearings. Extra heavy spiral-cut bevel driving gears.

BRAKES: 4-wheel service, external contracting on 11" drum on rear and internal expanding on front. Inside diameter front drum $10\frac{1}{2}$ ". Width of service band on rear 2", on front $1\frac{1}{2}$ ".

WHEELS: Steel disc wheels standard equipment on all passenger models.

TIRES: 4.50" x 20" balloon standard equipment on all passenger models.

FINISH: All passenger car models finished in Duco. Chromium plated brass radiator shell and head lamp rims.

DRIVE: Left side; gear shift and emergency brake levers in center; horn button located on top of steering wheel; foot accelerator and foot rest; dimmer switch foot operated; spark and throttle controls on instrument panel.

STEERING GEAR: Semi-reversible, ball-bearing full worm-and-gear type, mounted in bracket riveted to frame. 17" black finish steering wheel with rubber covered spider.

SPRINGS: Long, chrome-vanadium shock absorber steel springs; semi-elliptic type, front 36" and rear 54"; drop-forged shackles; rear springs underslung.

WHEELBASE: 107".

EQUIPMENT: All cars equipped with Alemite lubricating system. Theft-proof ignition lock. Parabolic type headlamps with parking bulbs, operating from lighting switch. Storage battery, with composition case. Motor-driven Klaxon horn. Complete tool kit. Weather-proof pedal enclosure. Automatic stoplight. Rear vision mirror. Open cars have curtains that open with the doors, a full-vision windshield with rubber weather strip and wiper. Coach, Coupe, Sedan, Cabriolet and Convertible Landau are equipped with military sun visor, a Fisher one-piece "VV" type windshield with automatic windshield wiper, and narrow windshield posts which eliminate blind spots. Adjustable driver's seats on all closed models. Cowl lamps on Cabriolet and Convertible Landau.

PRESENTED BY