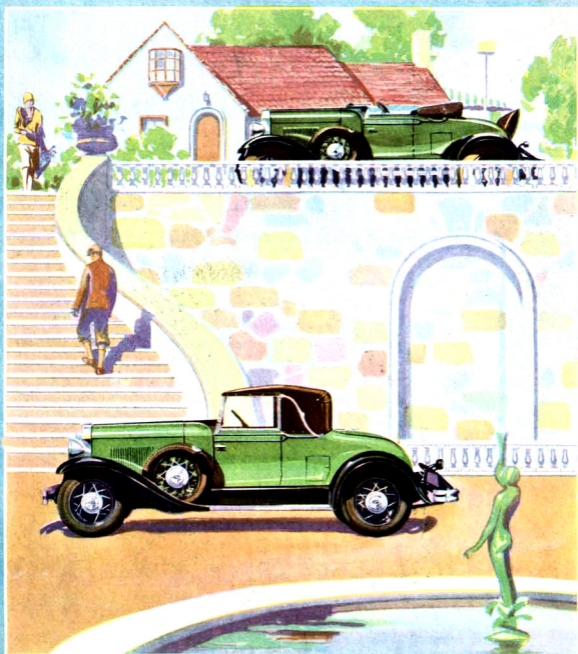


The Convertible Roadster
BY
OLDSMOBILE



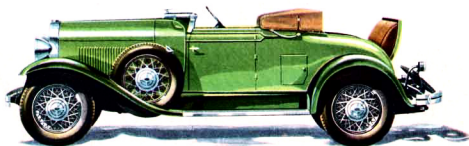
OLDSMOBILE introduces a really new body type—the roadster, which converts quickly and easily to a coupe. It is low, graceful, and bright with a generous allotment of chromium plate. Windshield mounting, headlamps, hardware, window frames, window moldings, and rear deck rails, all sparkle with the permanent, silver-white lustre of chromium.

The top is trimly tailored to the general contour of coupe body lines and buttons neatly along the forward bow.

The rear deck seat is fully upholstered in leather with deep and restful cushions. A side locker door facilitates the loading of luggage into the rear deck compartment.

Doors are sturdily mounted from the rear on three heavy hinges.

Available in three styles of equipment—Standard, with natural wood wheels; Special, with two spare tires in fender wells, bumpers, and folding trunk platform; and DeLuxe, with six wire wheels, fender wells, bumpers, and folding trunk platform.



The DeLuxe Convertible Roadster with top down

The Convertible Roadster



The
DeLuxe Convertible Roadster
with top up

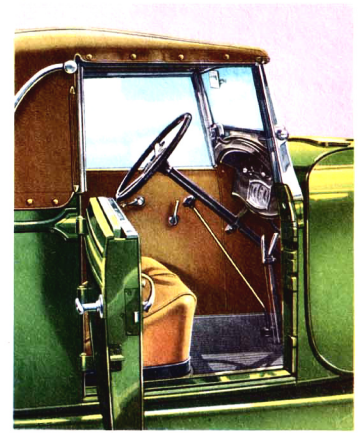
FOR spirited performance, handling ease, roadability, style, nothing can quite equal a smart roadster. That is why this new Oldsmobile model is first and foremost a roadster. Its character is unmistakably declared in the windshield, which is not a rigid type but folds smartly down above the cowl—in the upholstery, which is leather in pigskin grain finish—in the top, which is unlined, leaving bows of natural wood exposed inside. All these are emphatically open car features.

Yet, put up the top, turn up the windows, and it becomes a cozy coupe. Window frames are chromium-plated, closing snugly against cushions of sponge rubber along top frame and windshield posts. There is a cowl ventilator, rear view mirror, automatic windshield wiper, a parcel shelf behind the seat—all the con-

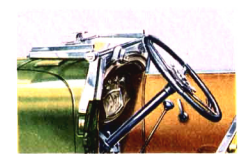
veniences and comforts of a closed car. In performance, in the way it handles, the car embodies all of the characteristics that have won for Oldsmobile the acclaim of ever-increasing thousands.

Powered by Oldsmobile's big 62-horsepower, six-cylinder engine, which delivers high-compression performance, it is smooth-running, fast, responsive—quick, steady, and silent in pick-up—dependable—economical. Has full-pressure engine lubrication, even to the piston pins, and controlled cooling that permits sustained travel at high speeds without heating. Full-length vertical radiator shutters are standard equipment.

Steering is remarkably easy and positive. Brakes are Oldsmobile's distinctive four-wheel type—simple, sure, and safe. Has four hydraulic shock absorbers.



COMPLETE comfort in any weather. A smart, open car for fair days, with top back, windshield forward, windows down; yet a snug coupe when preferred. The rear top bow is of unusually wide section across the roof, where it is rounded for its full width to smoothly support both the roof and the rear curtain. The rear curtain folds forward into the top, if desired.



GENUINE open car style and smartness in this folding windshield. Knurled nuts lock it into position. The automatic wiper mechanism is mounted at the base, and drops to allow windshield to fold forward.

OLDSMOBILE ~ More than ever in the spotlight of public favor

OLDSMOBILE . . . LANSING, MICH.

The Olds Motor Works reserves the right to make changes in prices and specifications or add improvements at any time, without incurring any obligation to install same on cars previously sold