



*The Greatest*

# CHEVROLET

*in Chevrolet History*

A SIX IN THE PRICE RANGE OF THE FOUR

*The Greatest*  
**CHEVROLET**  
*in Chevrolet History*

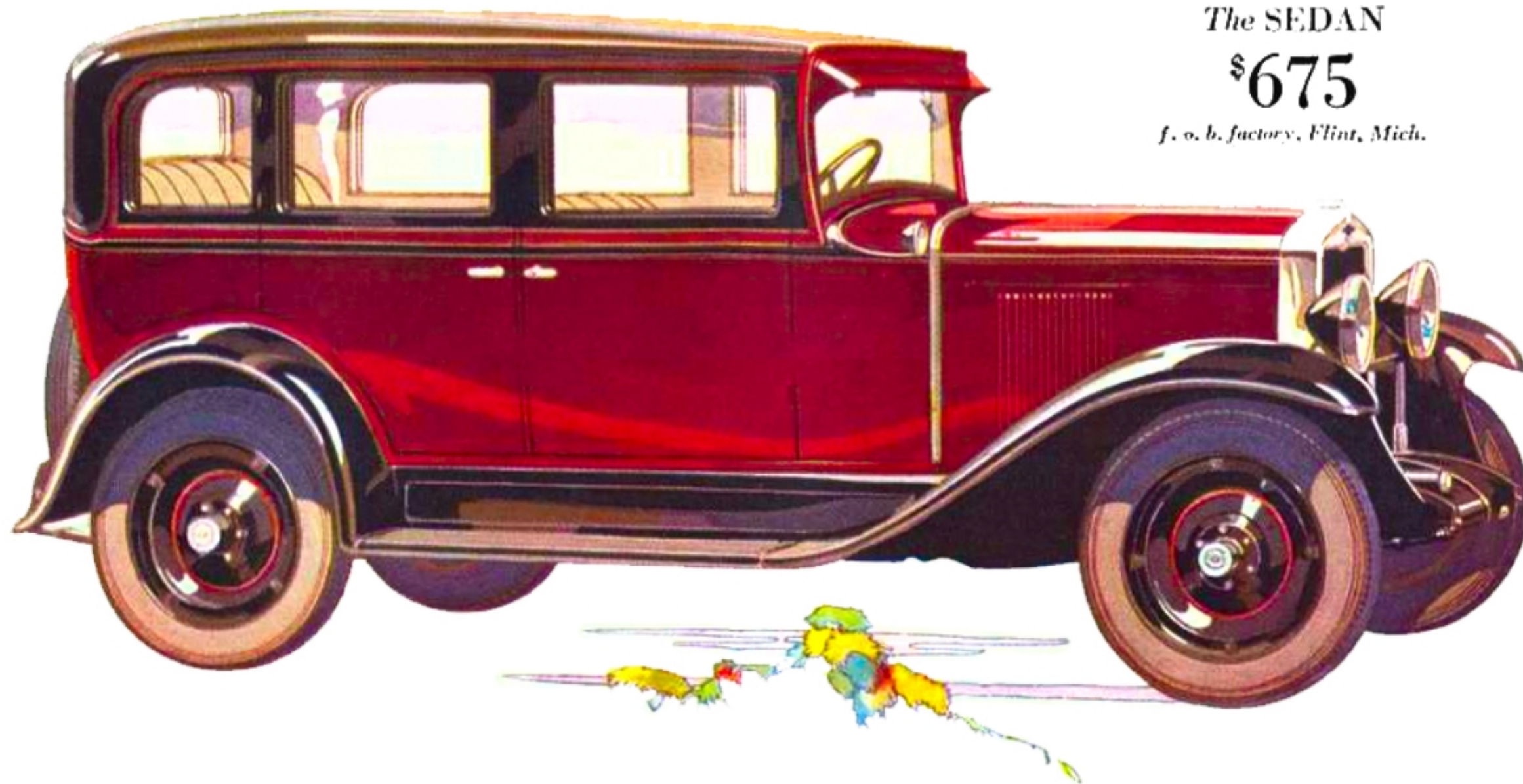
Again, Chevrolet has used the savings from its great volume production to build a smoother, faster, better Six—at prices within the reach of all.

Retaining all those basic qualities which have brought to the Chevrolet Six such great success—this new car offers, in addition, every worthwhile advancement that a year of engineering research has developed.

Some of the advancements in design and construction are illustrated and described on the following pages. Consider them carefully—then go for a ride, and learn what they mean in terms of finer performance!

*Smoother — Faster — Better*





*The* SEDAN

\$675

*f. o. b. factory, Flint, Mich.*

**THE SEDAN**—The new Fisher Body Sedan with its four large doors and its roomy, richly-upholstered interior, ideally meets every requirement for a family car. The rear seat is equipped with arm rests—and the front seat is adjustable. Equipment is especially complete—giving to the interior an air of custom smartness.

## *Improved Features of the New Chevrolet Six*

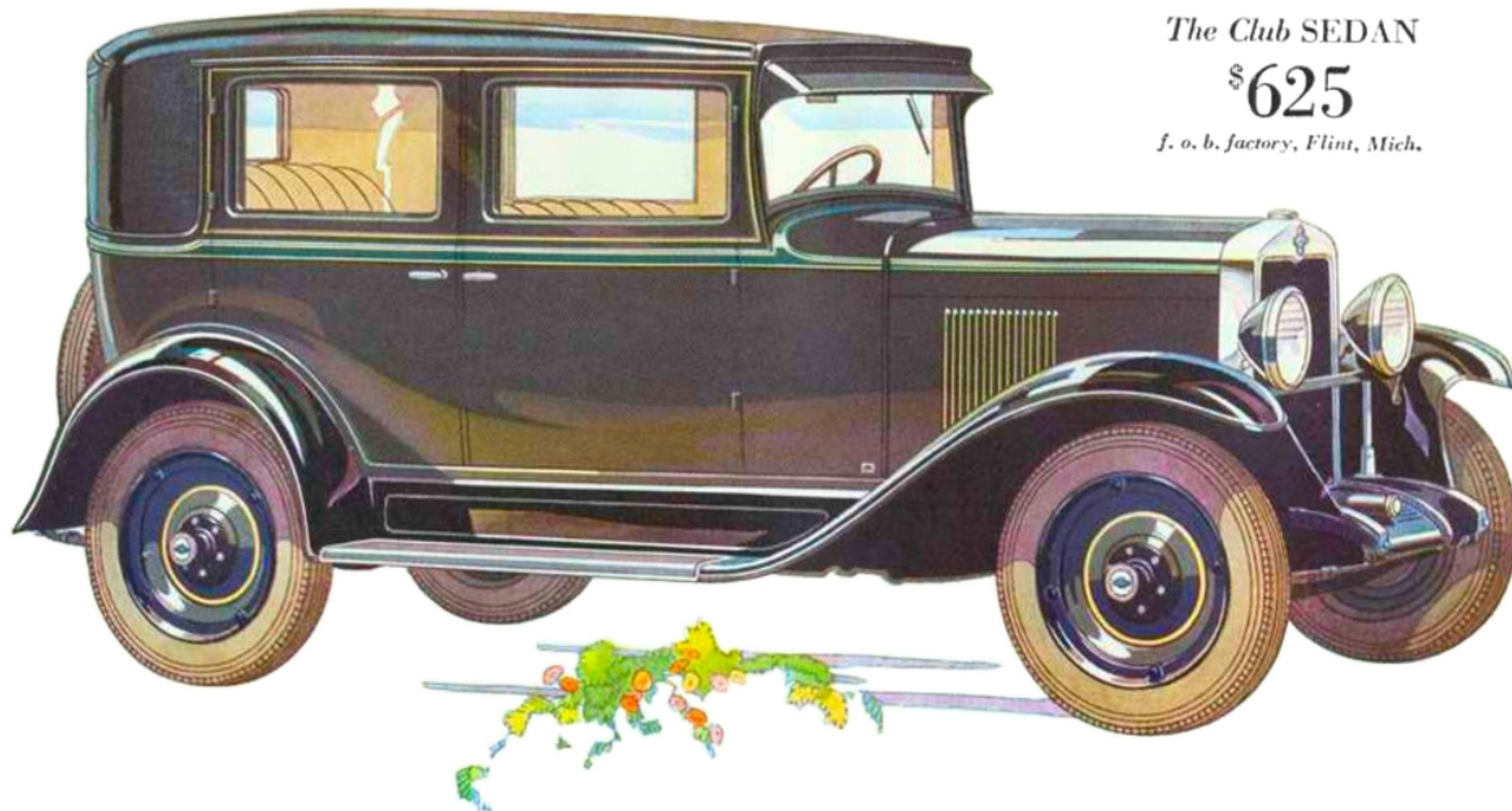
There are many improvements in the new Chevrolet Six—making it, by every standard of comparison, the Greatest Chevrolet in Chevrolet History.

Many of these improvements cannot be seen when you inspect the car on the showroom floor—but once you take the wheel and drive, you sense their presence immediately.

You will find faster acceleration, greater safety, greater comfort, finer handling ease—in short, greater value in every respect than was ever before available in a Chevrolet car.

First in importance is the 50-horsepower six-cylinder valve-in-head engine.





*The Club* SEDAN

\$625

*f. o. b. factory, Flint, Mich.*

**THE CLUB SEDAN**—Close-coupled, yet with ample room for five passengers, this exceptionally attractive model is at home in any company—a car for those who demand the utmost in comfort and appearance. The body is built by Fisher—and reveals all the Fisher superiorities in design, appointments and craftsmanship.

## IMPROVED FEATURES OF THE NEW CHEVROLET SIX

*(Continued from page 2)*

Tremendous advancement has been made in the past few years in engine design. And the Chevrolet motor brings you every advantage of this engineering progress.

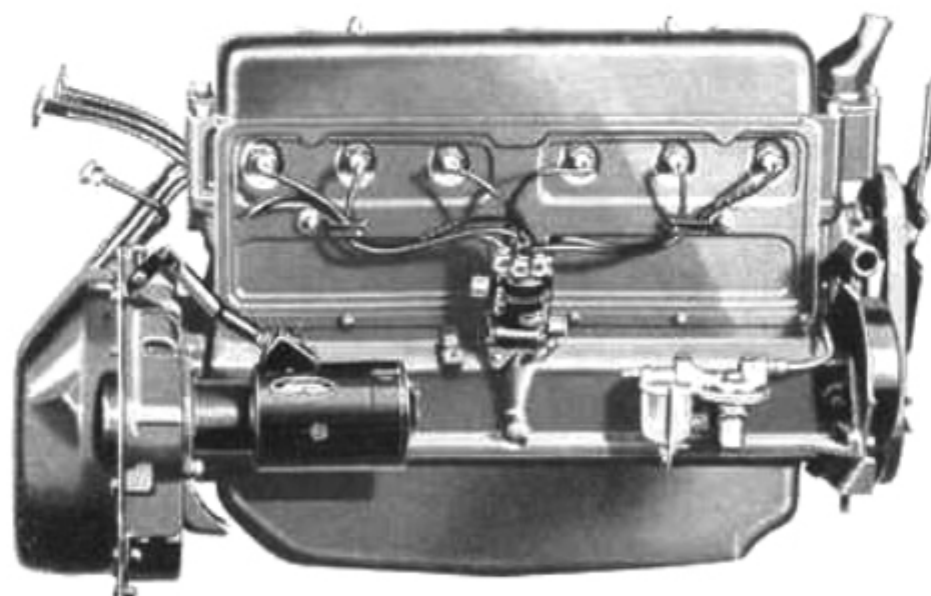
It is the product of many years of designing and testing—in the most thoroughly-equipped engineering laboratories and on the great General Motors Proving Ground.

It incorporates many advanced features which contribute to every phase of performance, economy and dependability.

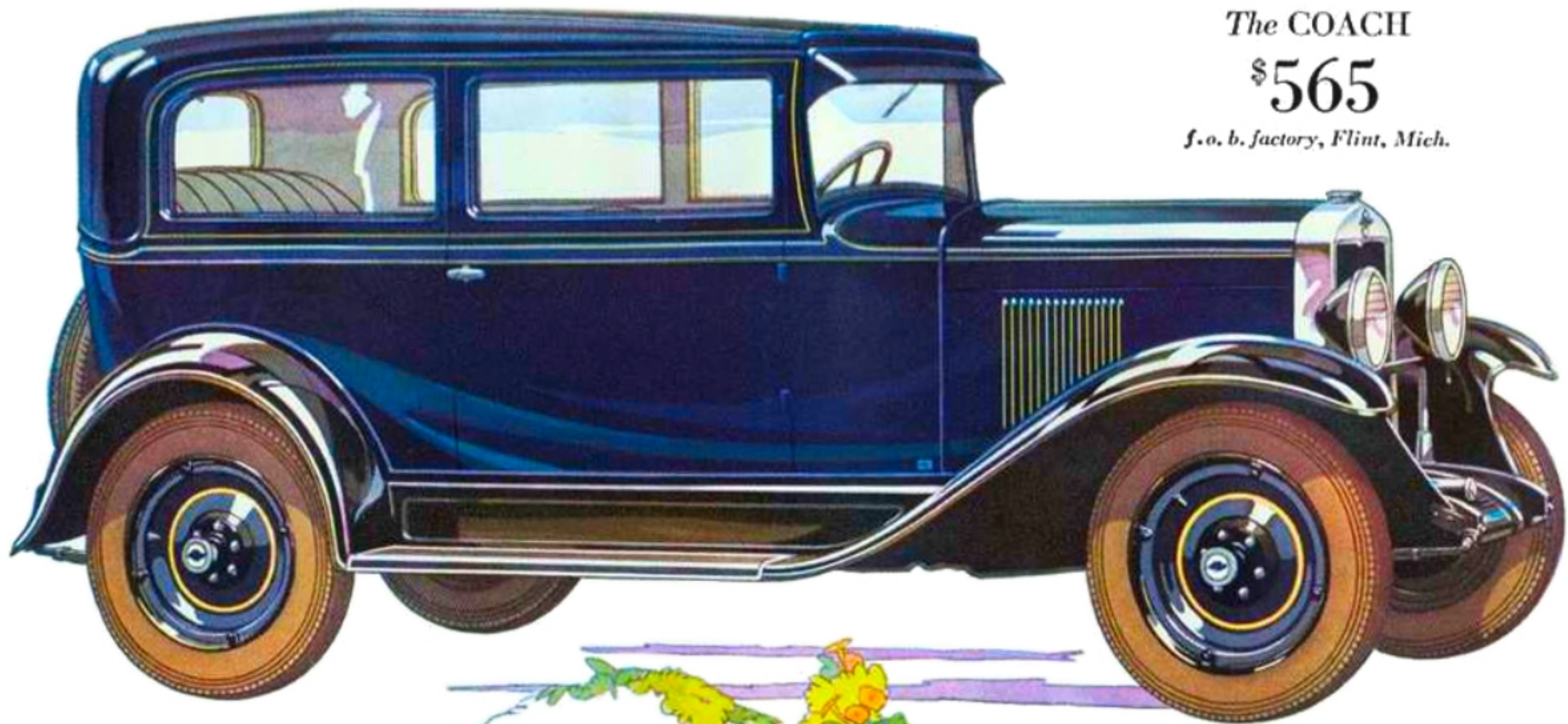
A special high compression combustion chamber gives faster acceleration, higher

speed and more power. Automatic lubrication of the valve mechanism results in extremely quiet operation. A big 48-pound crankshaft, both statically and dynamically balanced, contributes to smoother operation. Thoroughly lubricated bearings add to dependability and endurance. An improved hot-spot manifold and larger carburetor

venturi give improved performance with even greater economy of fuel. And new bronze bushed pistons—two pounds lighter per set—result in greater smoothness, faster acceleration and longer life.



*The Chevrolet 6-Cylinder 50-Horsepower  
Valve-in-Head Engine*



*The* COACH

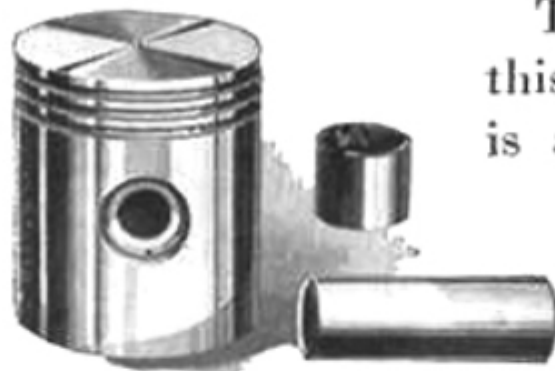
\$565

*f.o. b. factory, Flint, Mich.*

**THE COACH**—This popular model, with its full-sized Body by Fisher, seats five people in perfect comfort. The right front seat folds forward to give easy access to the rear. The driver's seat is adjustable, forward and back, to provide a comfortable driving position for everyone. The doors are made exceptionally wide for safety and comfort.

## IMPROVED FEATURES OF THE NEW CHEVROLET SIX

(Continued from page 4)



*Light Weight Bronze Bushed Pistons*

The net result of this advanced design is a type of engine performance new and unique in a low-priced car. The power flows with delightful smoothness at every speed—no vibration, no body rumble, no noise fatigue.

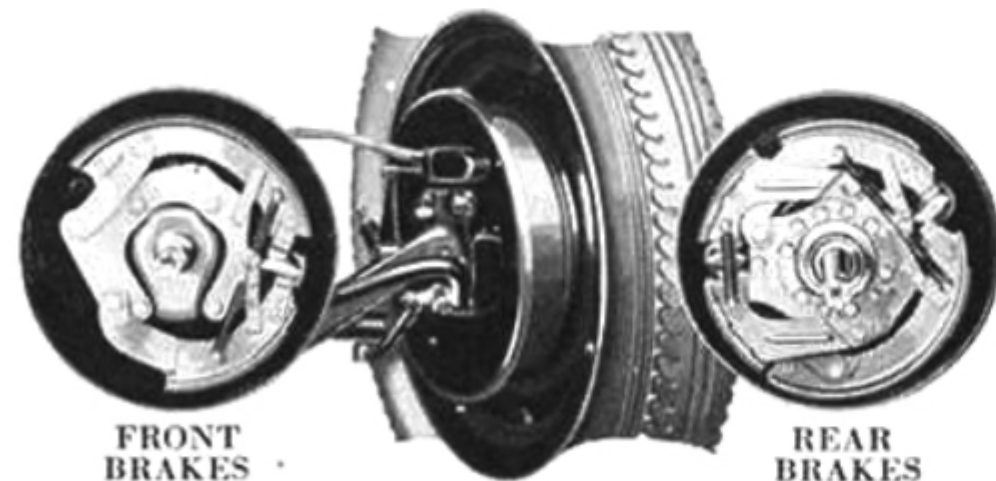
Acceleration is remarkably fast. There is a great reserve of power that carries you over the steepest hills.

And you can drive in perfect comfort at high speeds for any length of time.

### S A F E T Y

In safety, as well as in motor performance the new Chevrolet Six is exceptional.

The braking system has been entirely re-designed, with fully-enclosed, internal-expanding *water-proof* brakes both front and rear. The brake lining is of a new type and is particularly resistant to heat—which means that it is long-lived, as well as extremely efficient. An equalizing system balances the pressure at the wheels. A special upper shoe design insures uniform distribution of wear on the lining, and, in

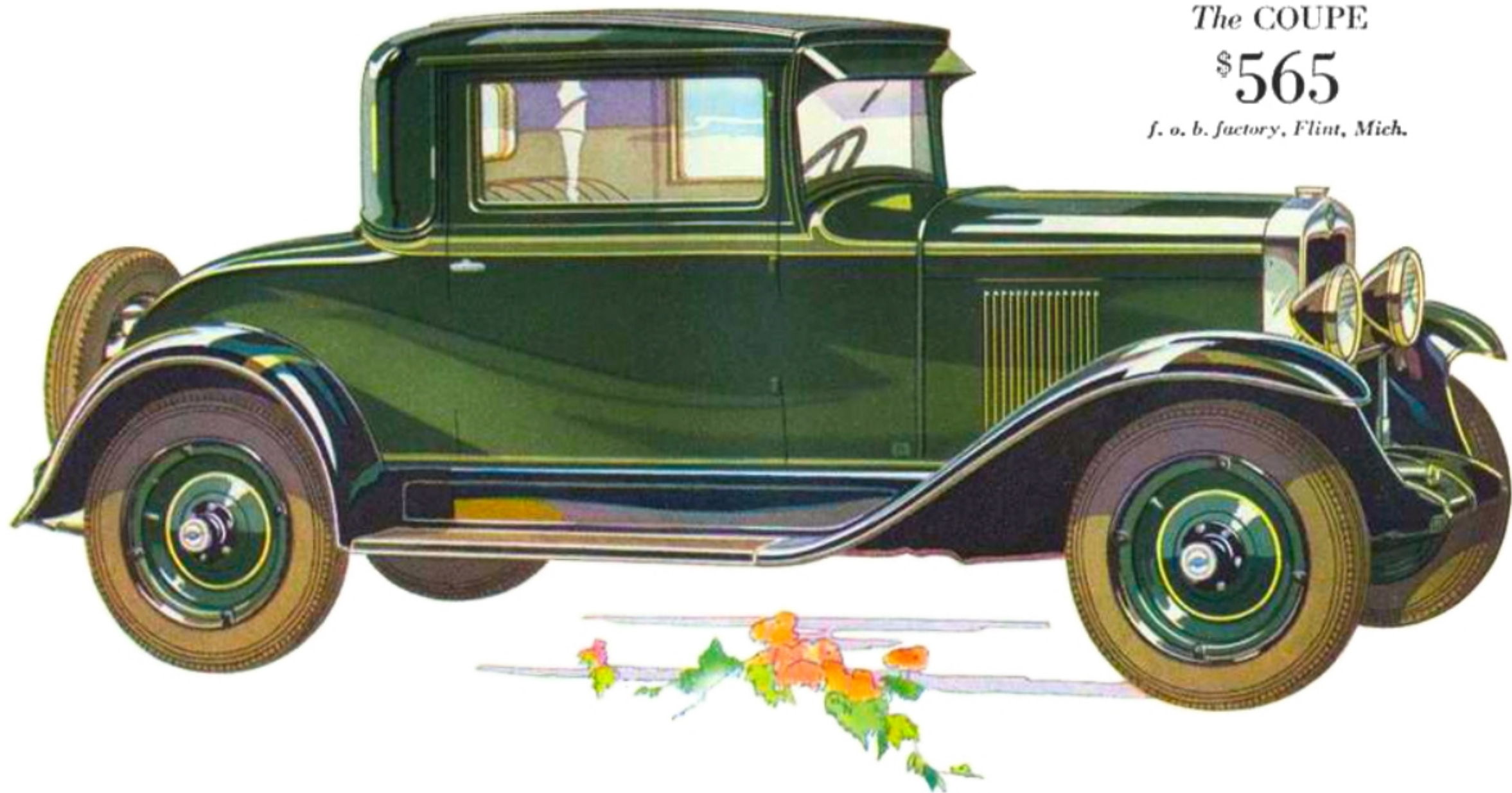


FRONT  
BRAKES

REAR  
BRAKES

*Chevrolet Fully-Enclosed 4-Wheel Brakes*





*The* COUPE

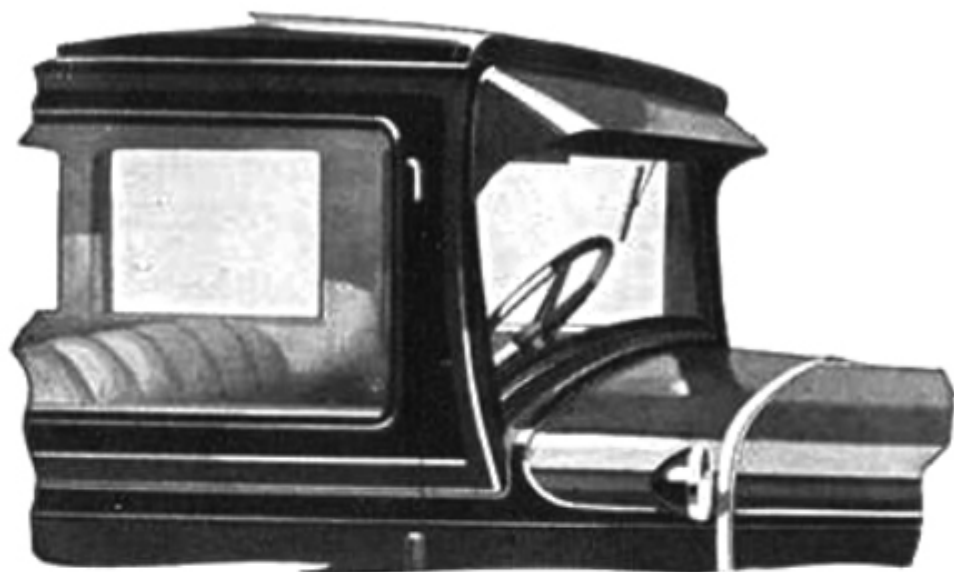
\$565

*f. o. b. factory, Flint, Mich.*

**THE COUPE**—The Coupe, with Body by Fisher, is the most distinctive two-passenger enclosed car that Chevrolet has ever offered. An unusually spacious seat with a large luggage compartment makes this model particularly suited for salesmen—as well as for those who desire individual transportation. The seat is adjustable to meet individual driving preferences.

## IMPROVED FEATURES OF THE NEW CHEVROLET SIX

*(Continued from page 6)*



*Chevrolet Fisher VV Non-Glare Windshield.*

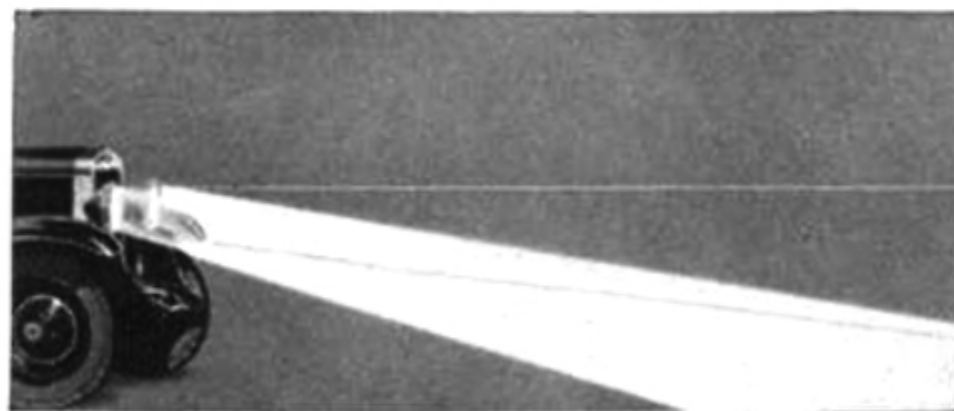
addition, prevents locking. And adjustment is extremely easy—through a simplified screw control.

Other features which you will appreciate are the two-beam head lamps and the new Fisher non-glare windshield. Each of these features is a great contribution to the safety and satisfaction of motoring. The two-beam

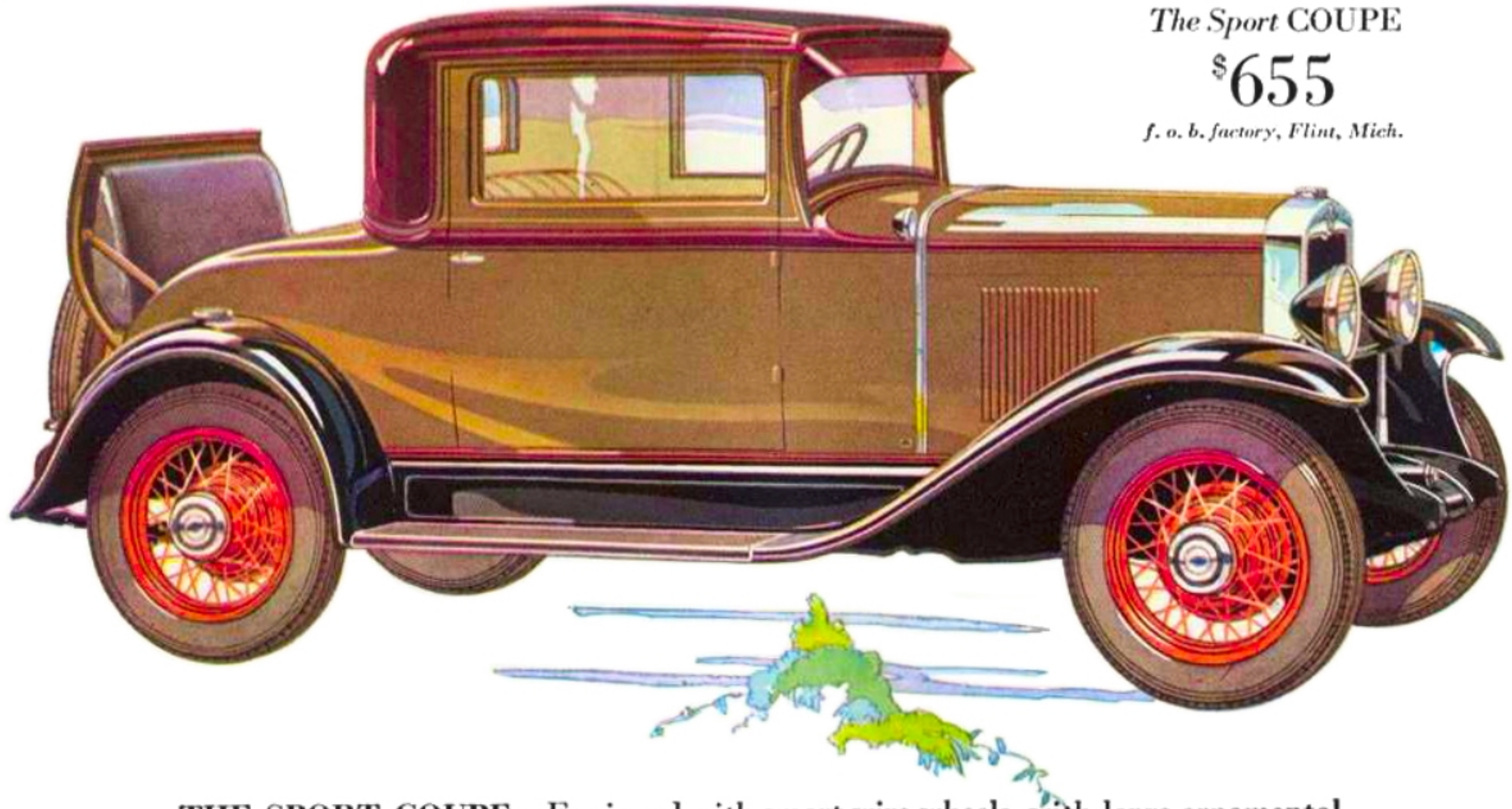
head lamps are controlled by a foot-operated switch, permitting courtesy without the inconvenience of dimmed lights. And the new non-glare windshield makes night driving safer by reflecting downward, away from the driver's eyes, the light from the head lamps of automobiles approaching from the rear.

### RIDING COMFORT

Delco-Lovejoy hydraulic shock absorbers—the most popular hydraulic shock ab-



*Chevrolet's Two-Beam Head Lamps*



*The Sport COUPE*

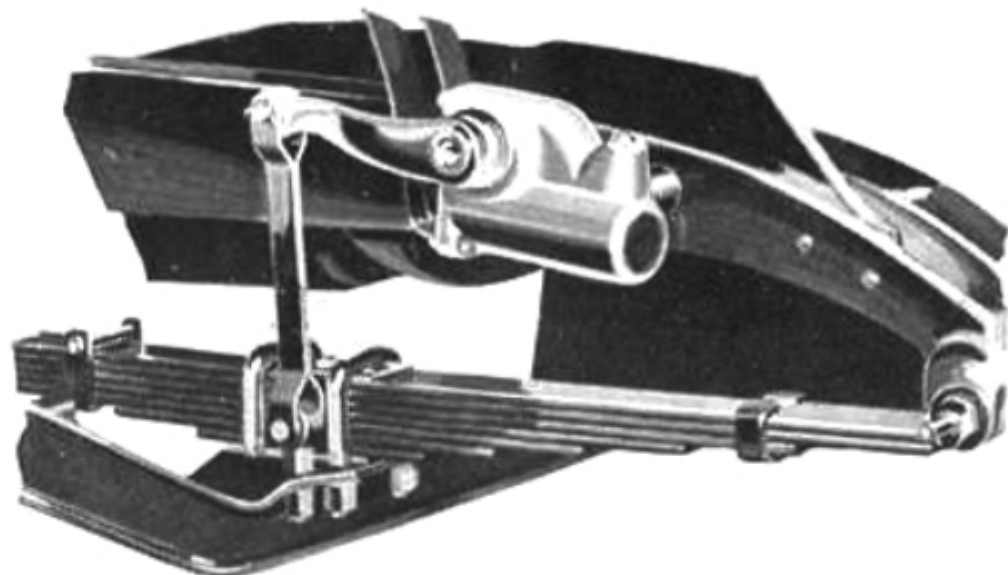
**\$655**

*f. o. b. factory, Flint, Mich.*

**THE SPORT COUPE**—Equipped with smart wire wheels, with large ornamental hub caps, the Chevrolet Sport Coupe is an unusually beautiful car. A spacious rumble seat makes it easily adaptable for four passengers—and the rear glass is adjustable to permit conversation with the occupants of the rumble seat.

## IMPROVED FEATURES OF THE NEW CHEVROLET SIX

*(Continued from page 8)*



*Delco-Lovejoy Hydraulic Shock Absorber*

sorbers in the world—have been made standard equipment on all passenger models, both front and rear. They are positive and quiet in their action and result in an exceptionally smooth ride over all types of roads.

The four long semi-elliptic springs—designed for use with the new hydraulic shock absorbers—are equipped with new type

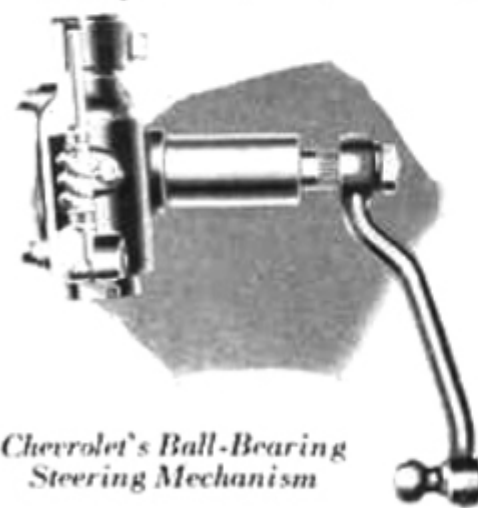
spring shackles, which are self-adjusting.

The full ball-bearing steering mechanism has been improved by a new front axle assembly—which gives the front wheels finer balance and increases roadability. The steering

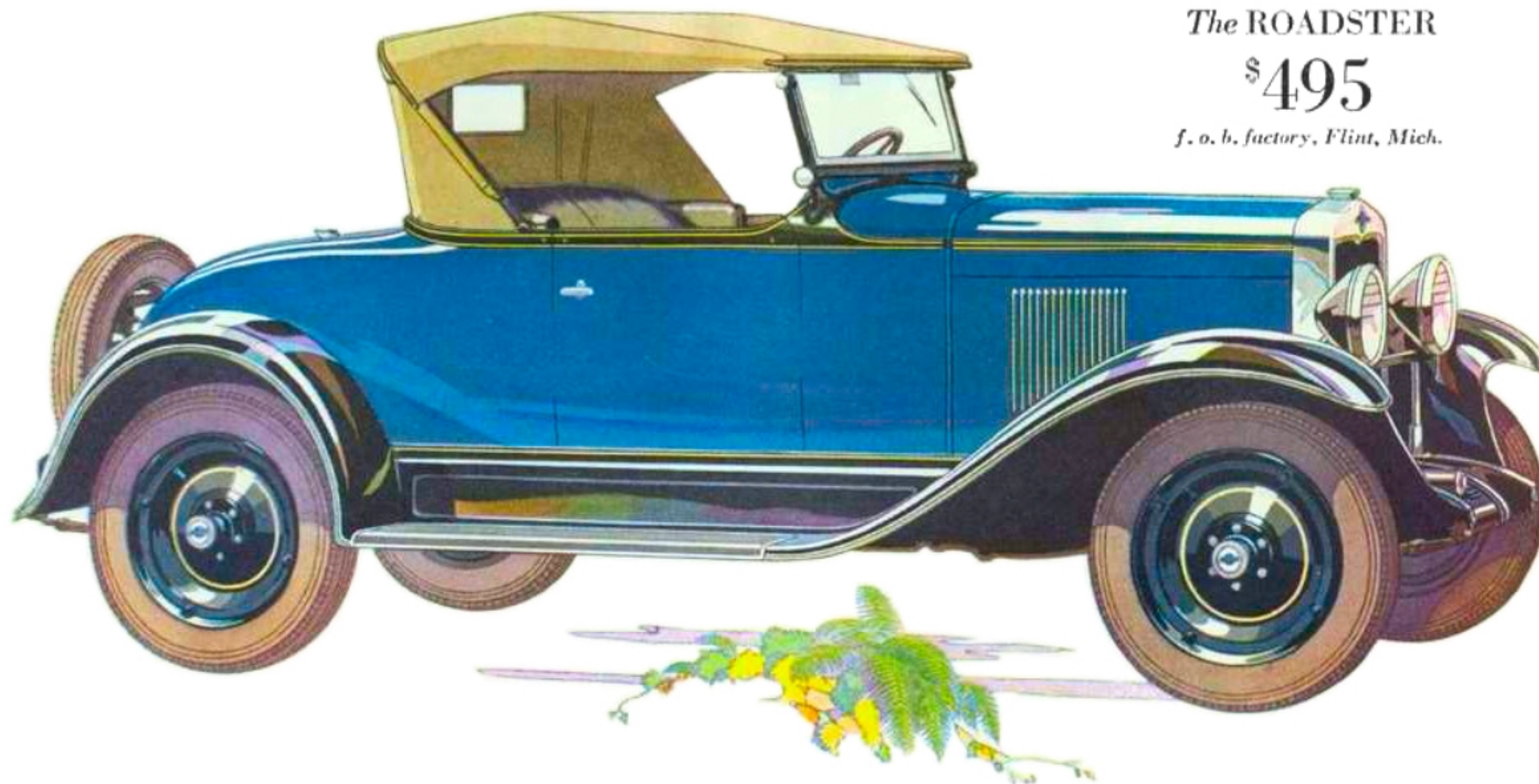


*Chevrolet's Self-Adjusting Spring Shackles*

wheel has been set lower—a feature which, combined with the new adjustable driver's seat, assures a restful driving position for every Chevrolet owner.



*Chevrolet's Ball-Bearing Steering Mechanism*



*The* ROADSTER

\$495

*f. o. b. factory, Flint, Mich.*

**THE ROADSTER**—The Chevrolet Roadster is one of the most attractive body creations in the Chevrolet line. It is ideally suited for those who seek the utmost economy—combined with outstanding comfort, convenience and performance. The top folds neatly back—and close-fitting curtains afford protection in any weather.

## IMPROVED FEATURES OF THE NEW CHEVROLET SIX

*(Continued from page 10)*

### COMFORT AND CONVENIENCE

Equally outstanding are the beautiful Fisher bodies—equipped throughout with the comfort and convenience features found on cars much higher in price. The seats are unusually deep and wide. The upholstery materials are richer and more durable. The instrument panel carries a new and more convenient grouping of the control instruments—including a new dash gasoline gauge. And numerous refinements in closed models—such as



robe rail, foot rests, arm rests, dome light, remote control door handles, smoking sets and generous door pock-



*New Dash Gasoline Gauge*

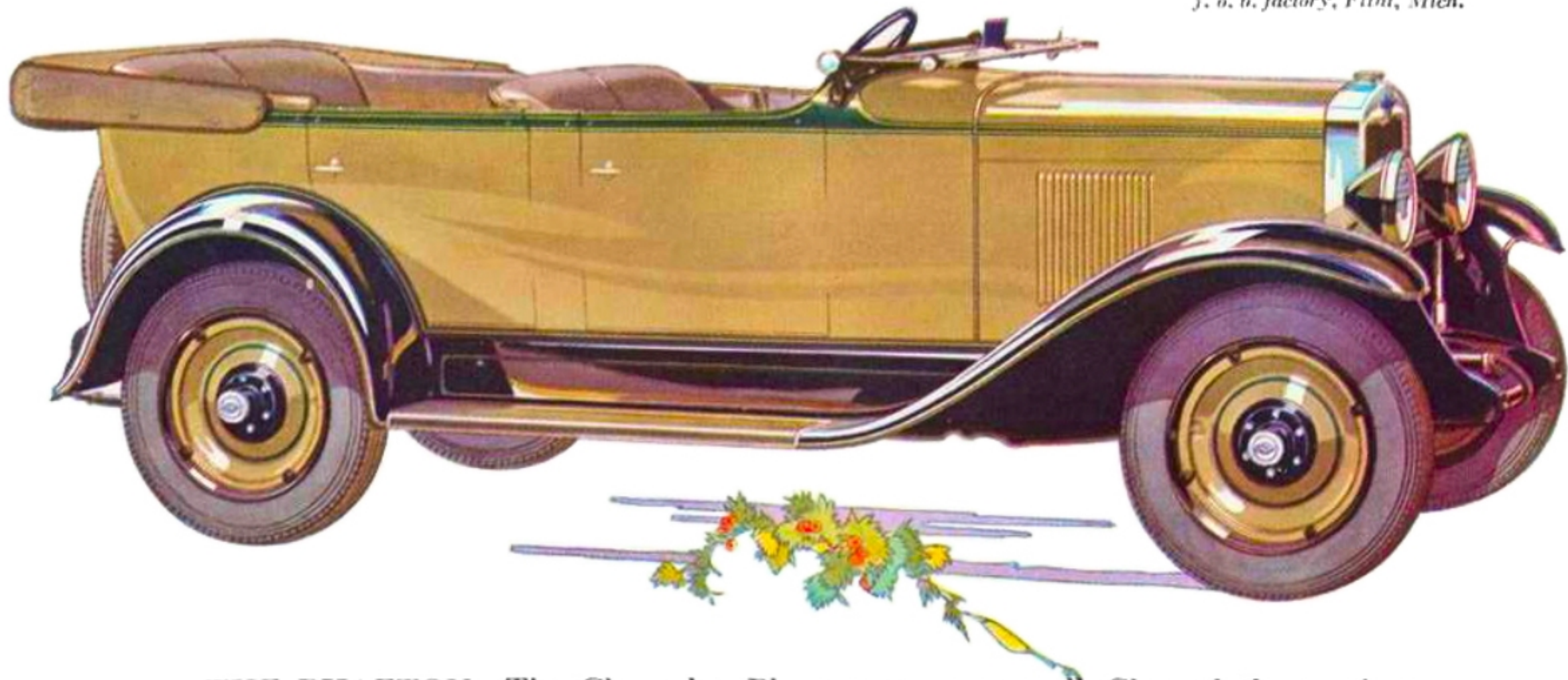
ets—contribute to comfort, convenience and interior beauty.

New, larger, full-balloon tires with smaller wheels give the entire car a fleetier, racier appearance—as well as finer comfort and greater roadability. Wire wheels, with large ornamental hubs and hub caps are standard equipment on the Sport Coupe and Sport Roadster.

*The* PHAETON

\$495

*f. o. b. factory, Flint, Mich.*

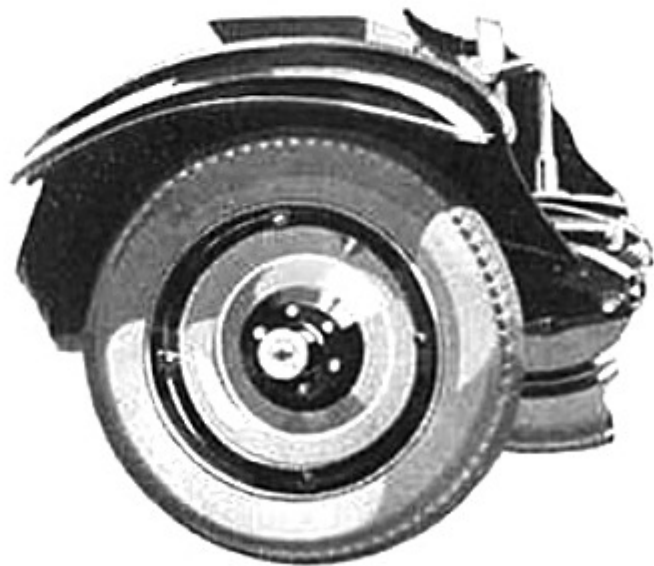


**THE PHAETON**—The Chevrolet Phaeton surpasses all Chevrolet's previous achievements in providing outstanding open car value. Stylish, roomy and convenient—it accommodates five passengers in comfort. The seats have been lowered, the seat backs tilted, and the cushion springs have been made deeper and more resilient. The top is easily raised and lowered.

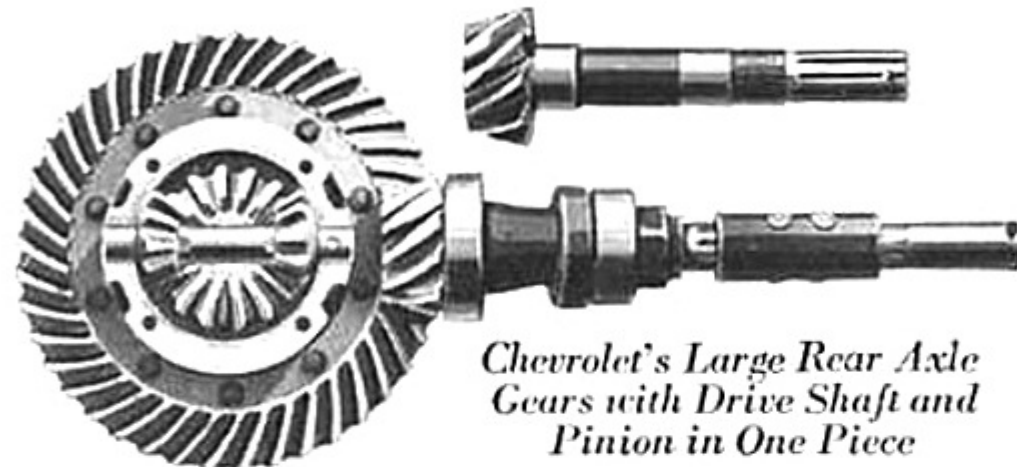
## IMPROVED FEATURES OF THE NEW CHEVROLET SIX

*(Continued from page 12)*

In addition, the Greatest Chevrolet in Chevrolet History includes all those basic features for which Chevrolet cars have been noted in the past. Heavy banjo-type rear axle . . . 107-inch wheelbase . . . modern fuel system, with safety gasoline tank in the rear . . . heavy channel steel frame . . . honeycomb Harrison radiator—these and scores of additional features which



have proved their value overmillions of miles of service, have all been retained in the new Chevrolet.



*Chevrolet's Large Rear Axle Gears with Drive Shaft and Pinion in One Piece*

### A RIDE WILL CONVINCe YOU

But no written description can give you any idea of the extra value and quality provided in this new car. To appreciate, in full measure, its fine performance and big-car comfort—you must take the wheel for a road demonstration.

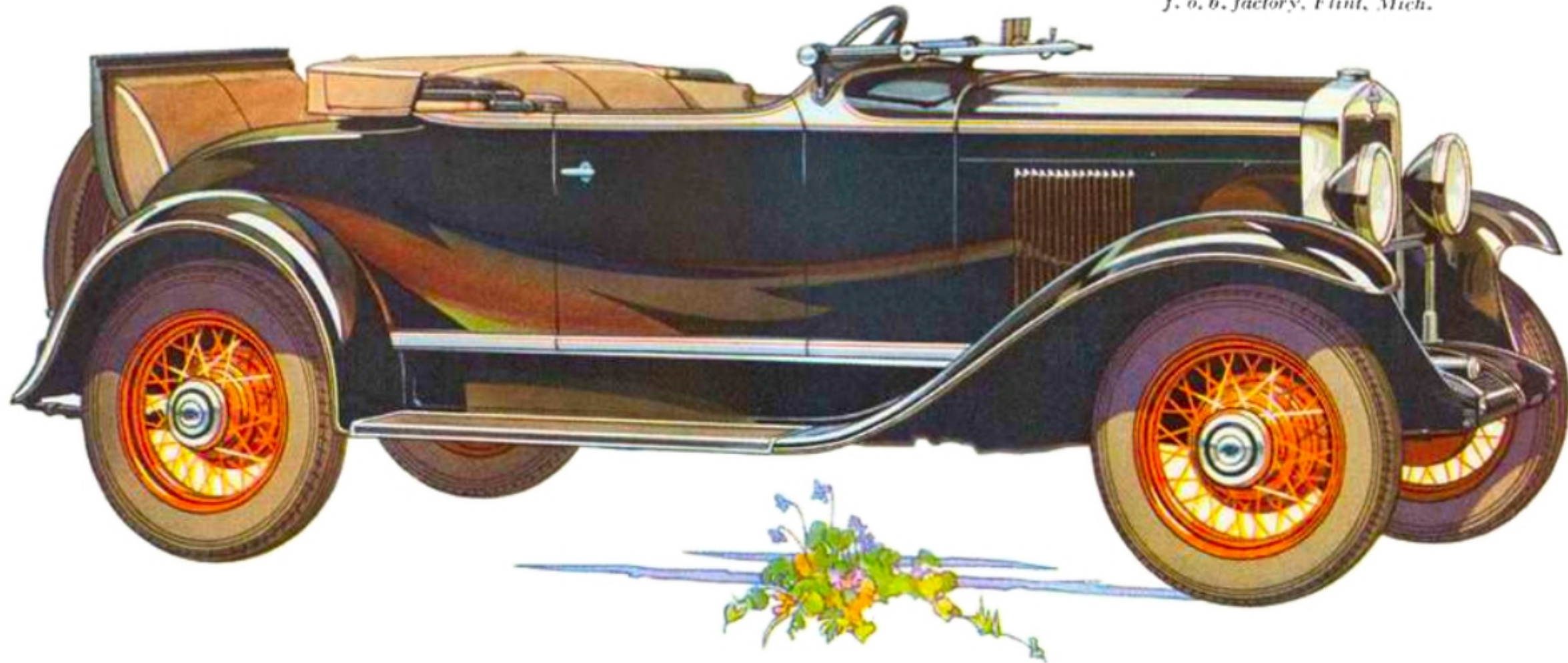
The new Chevrolet is finer in every way—in beauty, in performance, in comfort, in safety and in dependability. Yet it still remains "a Six in the price range of the four."



*The Sport ROADSTER*

**\$555**

*f. o. b. factory, Flint, Mich.*



**THE SPORT ROADSTER**—This long, low, racy model, with its smart wire wheels of the large ornamental hub type, is one of the most beautiful cars to be seen on the highways. It can instantly be arranged to accommodate four passengers in perfect comfort—for the rumble seat is unusually deep and spacious. The top folds neatly back, and the top boot is standard equipment.

# SPECIFICATIONS

**MOTOR:** Six-cylinder, valve-in-head type;  $3\frac{5}{16}$ " bore,  $3\frac{3}{4}$ " stroke.

**CYLINDERS:** Cast en bloc (including upper half of crankcase). Head detachable.

**VALVES:**  $1\frac{1}{2}$ " diameter intake;  $1\frac{11}{16}$ " exhaust.

**CONNECTING ROD BEARINGS:** 2" diameter,  $1\frac{3}{8}$ " long.

**CRANKSHAFT BEARINGS:** Front,  $1\frac{1}{8}$ " diameter,  $1\frac{3}{4}$ " long; center 2" diameter, 2" long; rear,  $2\frac{1}{16}$ " diameter,  $2\frac{3}{16}$ " long.

**CAMSHAFT BEARINGS:** Front,  $1\frac{1}{8}$ " diameter,  $1\frac{1}{8}$ " long; center,  $1\frac{3}{16}$ " diameter,  $1\frac{1}{8}$ " long; rear,  $1\frac{5}{8}$ " diameter,  $1\frac{1}{2}$ " long.

**OILING SYSTEM:** Splash, center main bearing pressure feed vane-type pump in crankcase, individual oil pockets; oil pressure gauge on instrument board.

**CARBURETOR:** Carter, with accelerating pump and venturi choke. AC air cleaner.

**FUEL:** Mechanical fuel pump; 11-gallon tank in rear of all passenger car models; gasoline gauge on instrument panel.

**IGNITION:** Delco-Remy, with high-tension wires, waterproofed.

**STARTER AND GENERATOR:** Delco-Remy.

**TRANSMISSION:** Selective type, sliding gear, three speeds forward and one reverse—unit power plant construction.

**INSTRUMENT PANEL:** Equipped with ammeter, oil gauge, speedometer, theft-

proof ignition lock, lighting switch, motor heat indicator, carburetor choke, spark and throttle control, automatic windshield wiper control, on all closed models, gas gauge. Indirectly lighted.

**CLUTCH:** Dry single-plate type, completely enclosed. Requires no lubrication.

**COOLING:** Large Harrison honeycomb radiator with water pump and fan.

**FRONT AXLE:** Drop-forged "I" beam. Four New Departure ball-bearings in wheels.

**REAR AXLE:** Semi-floating type. One-piece banjo-type pressed steel housing. Differential and driving gears in unit. Propellor shaft is made integral with pinion shaft by means of a splined sleeve. Large rear cover for inspection and adjustment. Six heavy-duty New Departure annular ball-bearings. Extra heavy spiral-cut bevel driving gears.

**BRAKES:** 4-wheel service, internal expanding type on  $11\frac{1}{2}$ " brake drum front and rear. Width of service brake lining  $1\frac{1}{2}$ ".

**WHEELS:** Steel disc wheels standard equipment on all passenger models, except Sport Coupe and Sport Roadster which have wire wheels.

**TIRES:** 4.75" x 19" balloon standard equipment on all passenger models.

**FINISH:** All passenger car models finished in attractive colors. Chromium-plated brass radiator shell, head lamp rims and standards.

**DRIVE:** Left side; gear shift and emer-

gency brake levers in center; horn button located on top of steering wheel; foot accelerator and foot rest; dimmer switch foot operated; spark and throttle controls on instrument panel.

**STEERING GEAR:** Semi-reversible, ball-bearing full worm-and-gear type, mounted in bracket riveted to frame.  $17\frac{1}{4}$ " black finish steering wheel with rubber covered spider.

**SPRINGS:** Long, chrome-vanadium, semi-elliptic type, front 36" and rear 54", new self adjusting shackles. Delco-Lovejoy shock absorbers front and rear on all passenger car models. Rear springs underslung.

**WHEELBASE:** 107".

**EQUIPMENT:** All cars equipped with Alemite lubricating system. Theft-proof ignition lock. Two beam type headlamps with parking bulbs, operating from lighting switch. Storage battery, with composition case. Motor-driven Klaxon horn. Complete tool kit. Weather-proof pedal enclosure. Automatic stoplight. Rear vision mirror. Open cars have curtains that open with the doors, a full-vision windshield with rubber weather strip and wiper. Coach, Coupe, Sedan, Sport Coupe and Club Sedan are equipped with military sun visor, a Fisher one-piece "VV" new type windshield with automatic windshield wiper. Adjustable driver's seats on all closed models. Cowl lamps on Sport Coupe and Sedan.



