

# CHEVROLET

PRESENTS A NEW AND  
IMPROVED LINE OF

# STANDARD SIXES

SIX-CYLINDER  
VALVE-IN-HEAD ENGINE

60 HORSEPOWER

FASTER ACCELERATION

GREATER ECONOMY

INCREASED SMOOTHNESS  
AND QUIETNESS

DOWN-DRAFT CARBURETOR  
(WITH FUEL PUMP AND AIR CLEANER)

OCTANE SELECTOR

# CHEVROLET

## STANDARD SIXES

### FOR 1934

*Drive it  
only 5 miles*

and you'll never  
be satisfied with any  
other low-priced car

CUSHION-BALANCED  
ENGINE-MOUNTING

TORQUE TUBE DRIVE

NEW ALL-WEATHER CABLE-  
CONTROLLED BRAKES

SMART NEW  
FISHER BODIES

IMPROVED FISHER  
NO DRAFT VENTILATION

THE WORLD'S  
LOWEST-PRICED SIX

## Colors and Upholsteries

As YOU glance through this catalogue you will note a wide difference in the backgrounds against which the various Chevrolet models are displayed. This varied treatment has been used with a definite purpose. Each background reproduces exactly the shade of Duco, and the color and texture of the upholstery, used for the model displayed. Thus you can form an accurate picture of just how the model of your choice will look on delivery. The colors shown here represent the smartest shades of the current season. As the year progresses new combinations may be introduced from time to time.

SIX-CYLINDER  
VALVE-IN-HEAD ENGINE

60 HORSEPOWER

FASTER ACCELERATION

GREATER ECONOMY

INCREASED SMOOTHNESS  
AND QUIETNESS

DOWN-DRAFT CARBURETOR  
(WITH FUEL PUMP AND AIR CLEANER)

OCTANE SELECTOR



Standard equipment on the coach including lay with wheels.

Comfortable, healthful motoring for the whole family—and at the lowest cost. The roomy Fisher body is equipped with the famous Fisher Ventilation, safety plate glass windshield, theft-resisting door locks, adjustable sun shade, and many other conveniences. You will find, in addition, all of the latest and best developments in streamline style in this smart, fast-looking Chevrolet Improved Standard Six—the most economical car you can buy.

The  
STANDARD SIX  
COACH

CUSHION-BALANCED  
ENGINE-MOUNTING

TORQUE TUBE DRIVE

NEW ALL-WEATHER CABLE-  
CONTROLLED BRAKES

SMART NEW  
FISHER BODIES

IMPROVED FISHER  
NO DRAFT VENTILATION

THE WORLD'S  
LOWEST-PRICED SIX

FEATURES OF THE STANDARD SIX

FEATURES OF THE STANDARD SIX

SIX-CYLINDER  
VALVE-IN-HEAD ENGINE

60 HORSEPOWER

FASTER ACCELERATION

GREATER ECONOMY

INCREASED SMOOTHNESS  
AND QUIETNESS

DOWN-DRAFT CARBURETOR  
(WITH FUEL PUMP AND AIR CLEANER)

OCTANE SELECTOR



Standard equipment on the coupe includes five wire wheels.

Unexcelled for economy in business or pleasure use, yet the Improved Standard Six Coupe has many comforts and conveniences featured on cars of much higher price. Its unusually deep cushions, long-wearing mohair upholstery, Fisher Ventilation, reversed cowl ventilator for greatly improved summer comfort, overlapping doors to prevent drafts, are only a few of many such refinements that become more and more satisfying with every economical mile.

*The*  
**STANDARD SIX  
COUPE**



Standard equipment on the sport roadster includes five wire wheels.

The Chevrolet Improved Standard Six Sport Roadster is particularly designed for drivers who have never lost their admiration for a roadster's low, sweeping lines and the exhilarating speed of an open car. Its handsome front end, wide skirted fenders, long hood, snug-fitting top, streamline style, and its smartness when viewed from any angle have never been offered before in a roadster so low in first cost—or costing so little to operate for gas, oil and maintenance.

*The*  
**STANDARD SIX  
SPORT ROADSTER**

CUSHION-BALANCED  
ENGINE-MOUNTING

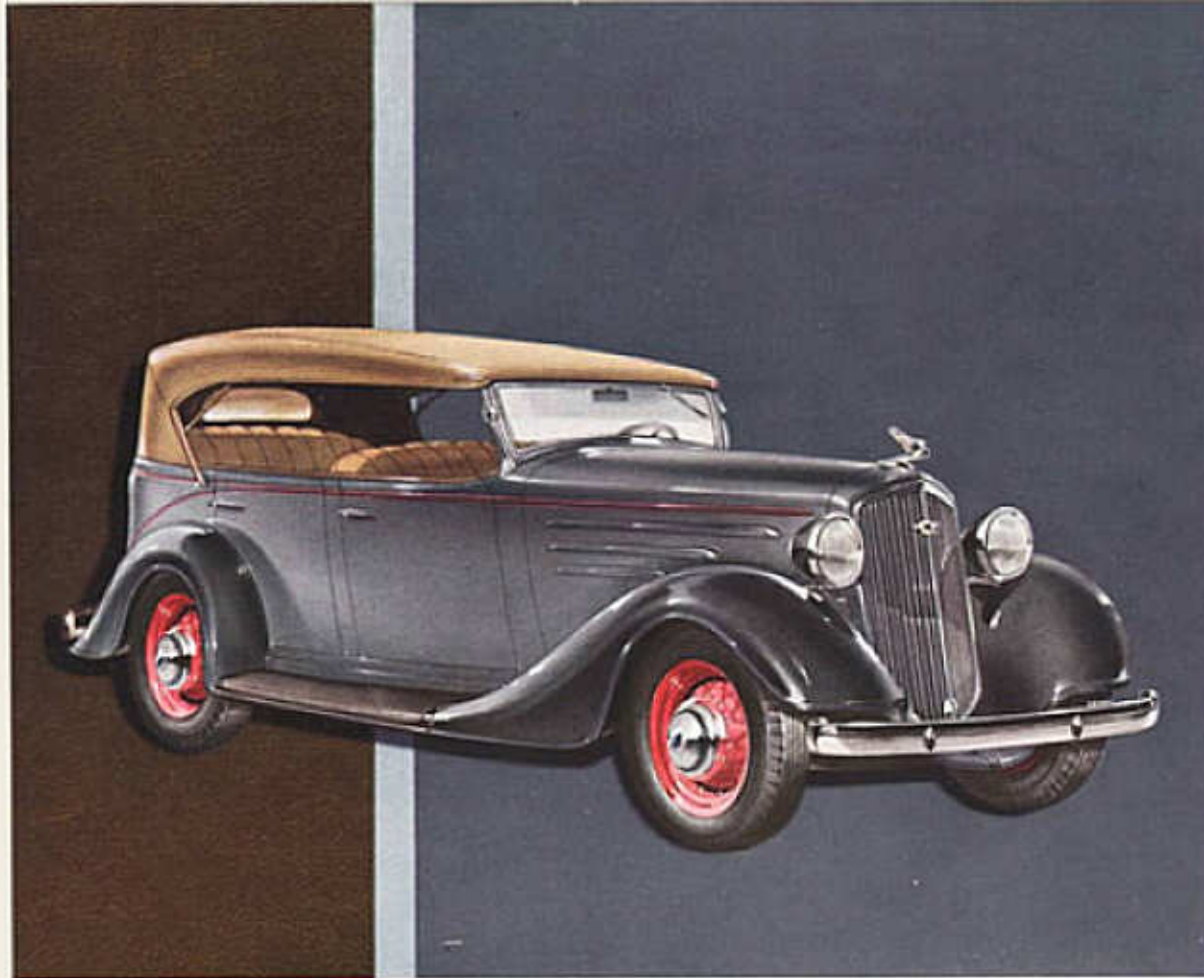
TORQUE TUBE DRIVE

NEW ALL-WEATHER CABLE-  
CONTROLLED BRAKES

SMART NEW  
FISHER BODIES

IMPROVED FISHER  
NO DRAFT VENTILATION

THE WORLD'S  
LOWEST-PRICED SIX



Standard equipment on the phaeton includes key wire wheels.

With the top down and snugly fastened in place, the Chevrolet Improved Standard Six Phaeton looks even longer and lower. The seats are wide and deeply cushioned, with plenty of room for comfort on long tours. Materials used in the seats, interior panels, and top are specially chosen for their weather-resisting qualities. The Phaeton gives you fast, powerful, quiet performance — made all the more enjoyable by its unequalled six-cylinder economy.

The  
STANDARD SIX  
PHAETON

## SPECIFICATIONS OF THE 1934 CHEVROLET STANDARD SIX

SIX-CYLINDER  
VALVE-IN-HEAD ENGINE

60 HORSEPOWER

FASTER ACCELERATION

GREATER ECONOMY

INCREASED SMOOTHNESS  
AND QUIETNESS

DOWN-DRAFT CARBURETOR  
(WITH FUEL PUMP AND AIR CLEANER)

OCTANE SELECTOR

**ENGINE:** Six cylinders; valve-in-head type; 3 1/2" bore; 3 1/2" stroke.

**CYLINDERS:** Cast in blue (including upper half of crankcase). Head detachable.

**VALVES:** 1 1/2" diameter intake; 1 1/2" diameter exhaust.

**CONNECTING ROD BEARINGS:** 2 1/2" diameter, 1 1/2" long. Material: lubbitt.

**CRANKSHAFT:** Weighs 57 pounds. Counter-balanced. Three main bearings.

**CRANKSHAFT BEARINGS:** Front 2 1/2" diameter by 1 1/2" long. Center 2 1/2" diameter by 1 1/2" long. Rear 2 1/2" diameter by 1 1/2" long. Material: steel-backed lubbitt.

**CAKSHAFT BEARINGS:** Front 1 1/2" diameter by 1 1/2" long. Center 1 1/2" diameter by 2 1/2" long. Rear 1 1/2" diameter by 1 1/2" long. Center bearing, steel-backed lubbitt.

**OILING SYSTEM:** Positive pressure feed to crankshaft main bearings, camshaft bearings and valve rocker arms. Vane type pump in crankcase; oil pressure gauge in instrument panel. Crankcase ventilator. Oil pump capacity 5.3 quarts per minute. Screen on intake side of oil pump.

**CARBURETOR:** Carter — down-draft construction. With accelerating pump. Single adjustment. Gasoline filter in fuel pump. AC air cleaner, silencer and flame arrester.

**FUEL:** Mechanical fuel pump. 11-gallon tank in rear. Gasoline gauge on instrument panel.

**IGNITION:** Delco-Benny with high-tension wires waterproofed. Automatic and vacuum spark control. Octane Selector connected to distributor.

**TRANSMISSION:** Helical constant mesh, three speeds forward and one reverse; unit power plant construction.

**INSTRUMENT PANEL:** Indirectly lighted. Includes ammeter, oil gauge, speedometer, theft-resisting ignition lock, lighting switch, carburetor choke, throttle control, gas gauge.

**CLUTCH:** Single dry plate. Single cushion-mounted clutch disc with braided-moulded facings.

**COOLING:** Harrison "V" center core radiator, water pump on fan. Core material: brass.

**FRONT AXLE:** I-beam section; 4 New Departure ball bearings in wheels.

**REAR AXLE:** Semi-floating type. One-piece banjo-type pressed steel housing; one-piece differential case.

**BRAKES:** Four-wheel service internal-expanding type on 10" brake drums front and rear; width of brake lining, 1 1/2".

**WHEELS:** 5 wire wheels and rear carrier standard equipment except as specified.

**TIRES:** 5.25-17 balloons.

**STEERING GEAR:** Semi-reversible, worm and sector type. 18 to 1 ratio.

**SPRINGS:** Long chrome-vanadium semi-elliptic type; front 35" and rear 54"; self-adjusting shackles. Delco-Lovejoy shock absorbers front and rear on all passenger models.

**FRAME:** Channel section 5 1/2" deep, width of flange 2 1/2". Stock thickness .125"; 5 sturdy cross members.

**EQUIPMENT:** All cars equipped with Zerf lubrication system; complete tool kit; automatic stoplight; rear vision mirror; full vision one-piece windshield; automatic wiper; two-beam headlamps; parking bulbs on all passenger models. Adjustable sun visor on closed models. Fisher No Draft Ventilation on all closed models.

**WHEELBASE:** 107".

CUSHION-BALANCED  
ENGINE-MOUNTING

TORQUE TUBE DRIVE

NEW ALL-WEATHER CABLE-  
CONTROLLED BRAKES

SMART NEW  
FISHER BODIES

IMPROVED FISHER  
NO DRAFT VENTILATION

THE WORLD'S  
LOWEST-PRICED SIX



CHEVROLET MOTOR COMPANY  
Detroit, Michigan

