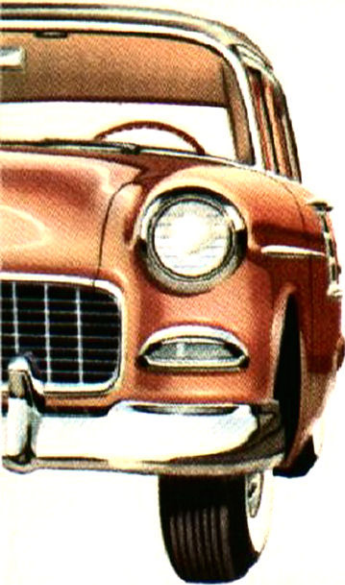


1955

CHEVROLET



All New 1955

CHEVROLET

Here is far more than a new Chevrolet . . .

here is a new concept in low-cost motoring!

Chevrolet for 1955 brings you beauty, style,

quality, comfort and advanced new

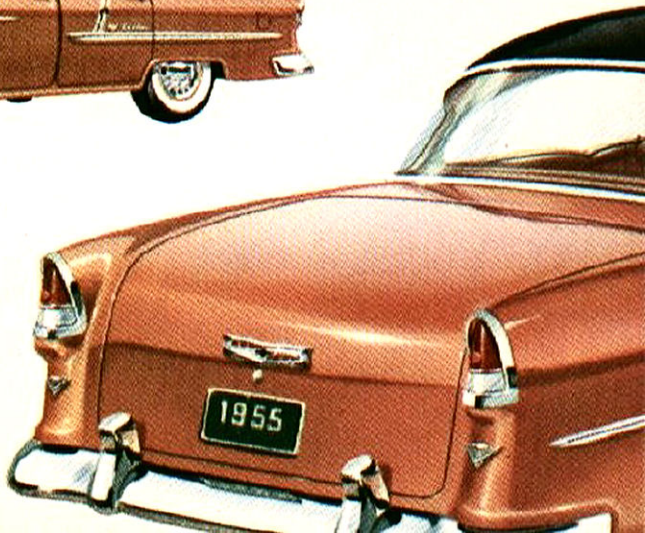
engineering features never before found

in a low-priced car.



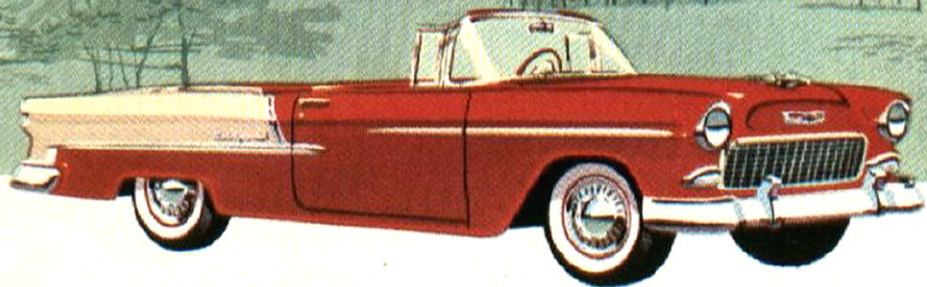
*14 stunning models
in 3 beautiful
new series*

THE BEL AIR 4-DOOR SEDAN *Illustrated*

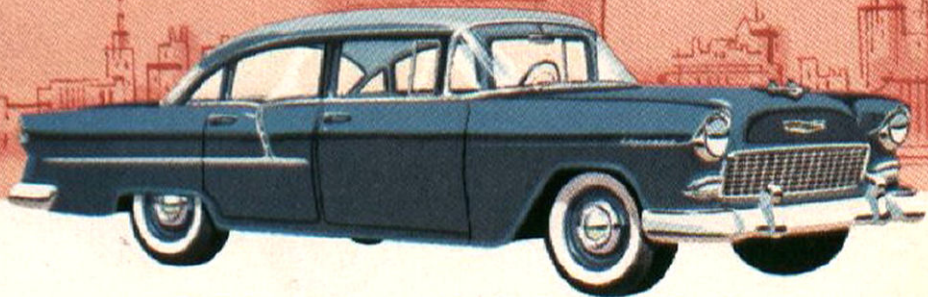




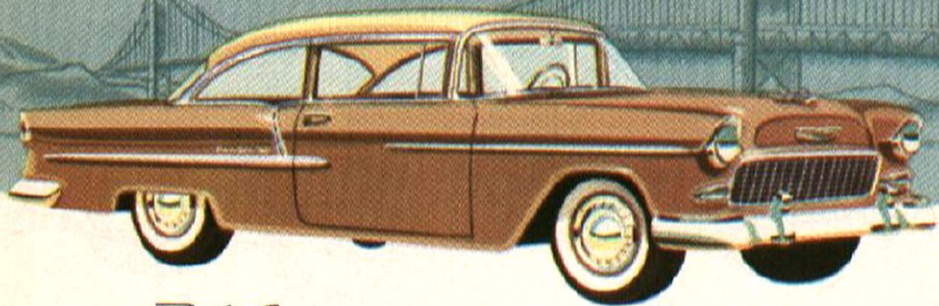
Bel Air SPORT COUPE



Bel Air CONVERTIBLE



Two-Ten 4-DOOR SEDAN
ALSO AVAILABLE IN BEL AIR AND ONE-FIFTY SERIES



Buick BEL AIR 2-DOOR SEDAN

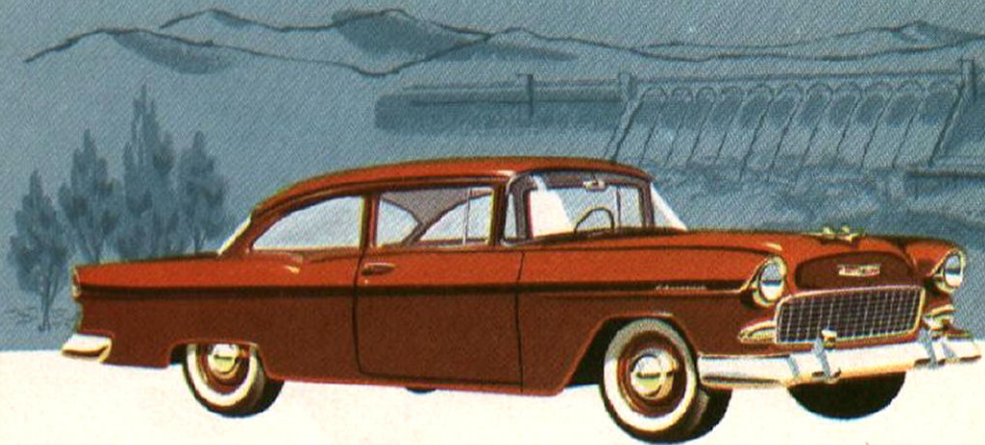
ALSO AVAILABLE IN THE TWO-TEN AND ONE-FIFTY SERIES



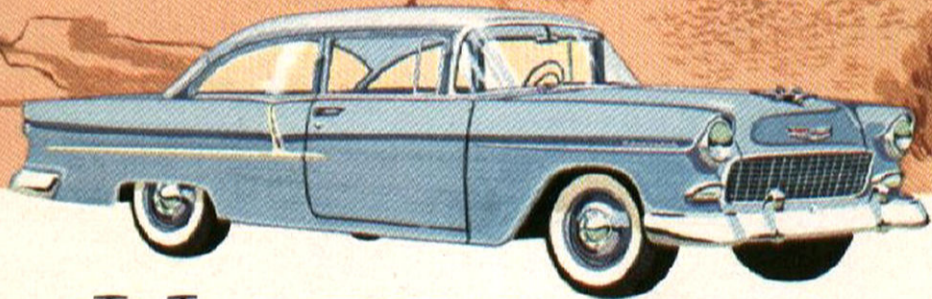
Bel Air 4-DOOR STATION WAGON
ALSO AVAILABLE IN TWO-TEN SERIES



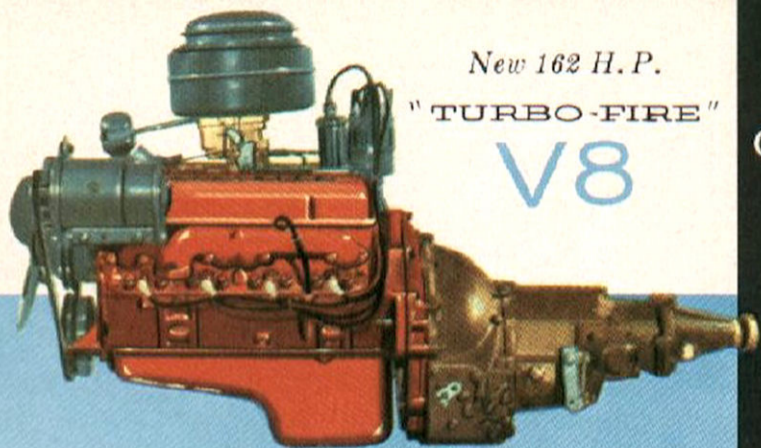
Two-Ten 2-DOOR STATION WAGON
ALSO AVAILABLE IN ONE-FIFTY SERIES



One-Fifty UTILITY SEDAN



Two-Ten DELRAY CLUB COUPE



New 162 H.P.

"TURBO-FIRE"
V8

162 H.P. "TURBO-FIRE" V8 WITH SUPER-SMOOTH POWERGLIDE AUTOMATIC TRANSMISSION
OR 162 H.P. "TURBO-FIRE" V8 WITH THRIFTY NEW TOUCH-DOWN OVERDRIVE
OR 162 H.P. "TURBO-FIRE" V8 WITH QUIET-EASE SYNCHRO-MESH TRANSMISSION

New 1955
CHEVROLET

3

great new
ENGINES

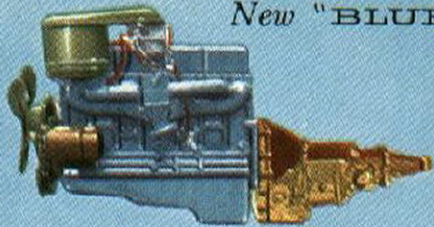
6

thrilling new
POWER TEAMS

New
"TURBO-FIRE" V8
162 horsepower,
8 to 1 compression
ratio, short piston
stroke to reduce
friction and wear,
snappy, high-
compression perform-
ance and wonderful
economy.

Two powerful new
valve-in-head 6's;
"BLUE-FLAME 136"
and
"BLUE-FLAME 123"
both 7.5 to 1
compression ratio;
outstanding
performance and
famous Chevrolet
dependability.

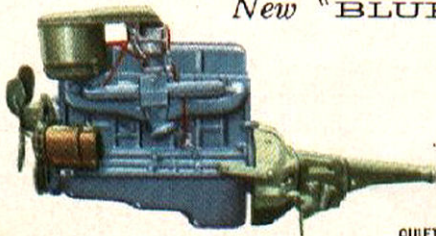
New "BLUE-FLAME 136"



6

"BLUE-FLAME 136" WITH
SUPER-SMOOTH POWERGLIDE
AUTOMATIC TRANSMISSION

New "BLUE-FLAME 123"



6

"BLUE-FLAME 123" WITH THRIFTY
NEW TOUCH-DOWN OVERDRIVE

OR "BLUE-FLAME 123" WITH
QUIET-EASE SYNCHRO-MESH TRANSMISSION

The All New 1955 CHEVROLET

- "Turbo-Fire" V8 Engine
- Two new "Blue-Flame" 6's
- Glide-Ride Front Suspension with Anti-Dive Braking Control
- New Sweep-Sight Windshield
- Improved Super-Smooth Powerglide Automatic Transmission
- New Touch-Down Overdrive
- New Ball-Race Steering
- New Comfort-Zone Heating and Ventilation
- New Swing Type Clutch and Brake Pedals
- New Tubeless Tires

ALL ILLUSTRATIONS AND SPECIFICATIONS CONTAINED IN THIS LITERATURE ARE BASED ON THE LATEST PRODUCT INFORMATION AVAILABLE AT THE TIME OF PUBLICATION APPROVAL. THE RIGHT

IS RESERVED TO MAKE CHANGES AT ANY TIME WITHOUT NOTICE IN PRICES, COLORS, MATERIALS, EQUIPMENT, SPECIFICATIONS AND MODELS, AND ALSO TO DISCONTINUE MODELS.

CHEVROLET MOTOR DIVISION
OF GENERAL MOTORS CORPORATION
DETROIT 2, MICHIGAN