

1973 CHEVELLE

Chevrolet



Laguna Colonnade Hardtop Sedan



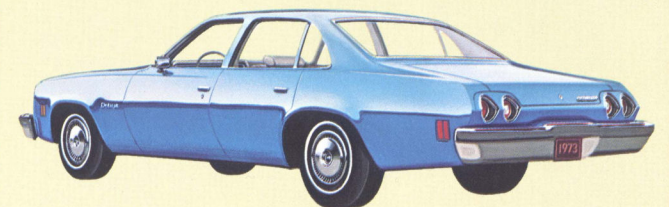
Malibu Colonnade Hardtop Coupe



Malibu Colonnade Hardtop Sedan



Deluxe Colonnade Hardtop Coupe



Deluxe Colonnade Hardtop Sedan Laguna Colonnade Hardtop Coupe shown in large illustration.

CHEVELLE

Standard Features

Newly restyled for '73 with all models in the new Colonnade Hardtop design. New improved front bumper system with twin hydraulic cylinders. New front disc brakes. Flush-styled outside door handles. Wider tread. Full Coil suspension redesigned for improved ride and handling. Springs computer-selected for model weight and equipment. Forward-mounted front door lock buttons. Full foam seats. Day-night inside rearview mirror. Hide-A-Way windshield wipers. Armrests on all doors. Flow-through power ventilation system. Double-panel roof with acoustically engineered inner panel. Side-guard door beams. Protective inner fenders and open body sill construction to help prevent rust. Sealed side-terminal Delco-Eye Energizer battery. Coolant recovery system for all engines. Body by Fisher. Deluxe models include new silver-accented grille. Parking lights in bumper. Hood rear edge molding. Dual-unit taillights. Malibu models include those features plus lower body side molding. Bright taillight accents. Laguna models also include a distinctive front end nose cone covered by dent resistant urethane, plus built-in parking lights. Full wheel covers. Dual-unit circular tail-lights. Body-color steel rear bumper with resilient impact strip.

Interiors

LAGUNA

- Standard cloth-and-vinyl interior in black, blue, green or red.
- Available all-vinyl in black, neutral, green, blue or red, plus saddle for coupe.
- All-vinyl for available swing-out Strato-bucket seat interior in black, blue, neutral or saddle.

With all interiors, doors and sidewalls are styled to complement seat trim. Floors are covered with color-keyed deep-twist carpeting; choice of black or red carpeting with black all-vinyl interior depending on exterior color.

MALIBU & SS

- Standard cloth and vinyl interior is offered in black, blue or green, plus chamois for the coupe.
- Available all-vinyl interiors are offered in black, blue, neutral, green or chamois, plus saddle for the coupe.
- An all-vinyl swing-out Strato-bucket seat interior is available in black, blue, neutral, saddle or chamois for the coupe.

With all interiors, doors and sidewalls are styled to complement seat trim. Floors are covered with color-keyed deep-twist carpeting; choice of black or red carpeting with black all-vinyl interior depending on exterior color.

DELUXE

- The standard cloth and vinyl interior is offered in black or green.
- An available all-vinyl interior is offered in black or green plus neutral for the coupe.

With all interiors, doors and sidewalls are trimmed in matching vinyl panels. Floor covering is color-keyed vinyl-coated rubber.

Reassurance Features

OCCUPANT PROTECTION

- Seat belts with pushbutton buckles for all passenger positions
- Single-buckle seat and shoulder belts for driver and right front passenger with reminder light and buzzer
- Two front seat head restraints
- Energy-absorbing steering column
- Passenger-guard door locks with forward mounted lock buttons
- Safety door latches and hinges
- Folding seat back latches
- Energy-absorbing padded instrument panel and front seat back tops
- Thick-laminate windshield
- Padded sun visors
- Safety armrests
- Safety steering wheel
- Contoured full roof inner panel
- Cargo-guard luggage compartment
- Side-guard beams.

ACCIDENT PREVENTION

- Side marker lights and reflectors (front side marker lights flash with direction signal)
- Parking lights that illuminate with headlights
- Four-way hazard warning flasher
- Backup lights
- Lane-change feature in direction signal control
- Windshield defroster, washers and dual-speed wipers
- Wide-view inside day/night mirror (vinyl-edged, shatter-resistant glass and deflecting support)
- Outside rearview mirror
- Dual master cylinder brake system with warning light
- Starter safety switch
- Dual-action safety hood latch
- Improved bumper system.

ANTI-THEFT

- Anti-theft ignition key warning buzzer
- Anti-theft steering column lock
- Inside hood latch release
- Multiple key combinations
- Visible vehicle identification
- Tamper-resistant odometer with telltale feature.

Power Mates

ENGINES

- Turbo-Thrift 250 Six, standard. Not available on Laguna. Single-barrel carburetor. Compression ratio—8.25:1.

Turbo-Fire 307 V8, standard. Not available on Laguna. Two-barrel carburetor. Compression ratio—8.5:1.

Turbo-Fire 350-4 V8, available (standard on Laguna). Two-barrel carburetor. Compression ratio—8.5:1.

Turbo-Fire 350-4 V8, available. Four-barrel carburetor. Compression ratio—8.5:1. Dual exhaust system.

Turbo-Jet 454-4 V8, available. Four-barrel carburetor. Compression ratio—8.25:1. Dual exhaust system.

Power steering, power brakes and 4-Speed or Turbo Hydra-matic transmissions required.

All 1973 Chevelle engines are equipped with advanced exhaust emission control systems, and are designed to operate efficiently on all regular grade gasolines including low-lead or no-lead. In addition to the lower exhaust emissions attainable, there are benefits in longer life for your spark plugs, exhaust system and other engine components. If these no-lead, low-lead gasolines are not available, any leaded regular grade gasoline with a research octane number of 91 or higher may be used.

TRANSMISSIONS

3-SPEED manual, standard. Column-mounted shift lever. Forward gears are fully synchronized for smooth shifting.

4-SPEED Wide-range manual, available. Fully synchronized. Floor-mounted shift lever. With 350-4 V8 only.

4-SPEED Close-ratio manual, available. Fully synchronized. Floor-mounted shift lever. With 454-4 V8 only.

TURBO HYDRA-MATIC 3-range automatic, available. Column-mounted shift lever, or floor-mounted when center console is ordered. Shifts automatically through three forward speed ranges or may be shifted manually.

ENGINES	SAE net hp*	Engine Usage	3-Speed Manual	4-Speed Manual	Turbo Hydra-matic
Laguna					
Turbo-Fire 350-2 V8	145	Std.	Std.	NA	Avail. (2)
Turbo-Fire 350-4 V8	175	Avail.	NA	Avail. (1)	Avail. (2)
Turbo-Jet 454-4 V8(3)	245	Avail.	NA	Avail. (4)	Avail.
Malibu and Deluxe					
Turbo-Thrift 250 Six	100	Std.	Std.	NA	Avail.
Turbo-Fire 307 V8	115	Std.	Std.	NA	Avail.
Turbo-Fire 350-2 V8	145	Avail.	Std.	NA	Avail.
Turbo-Fire 350-4 V8	175	Avail.	NA	Avail. (1)	Avail.
Turbo-Jet 454-4 V8(3)	245	Avail.	NA	Avail. (4)	Avail.

* Net horsepower ratings, in accordance with Society of Automotive Engineers standards, represent the power output of engines as installed in the automobiles.
 (1) 4-Speed Wide-Range—available only on coupes with Special Front and Rear Suspension
 (2) Power brakes required
 (3) Power brakes and power steering required
 (4) 4-Speed Close-Ratio—available only on coupes with Special Front and Rear Suspension.

Available Options

- Power all-metal Sky Roof.
- Swing-out Strato-bucket seats (coupe only).
- Six-way power seat.
- Deluxe bumpers.
- Front and rear bumper guards.
- Body side molding.
- Door edge guards.
- Color-keyed front and rear floor mats.
- Custom deluxe seat and shoulder belts.
- Visor vanity mirror.
- Electric clock.
- Rear window defogger.
- Dual sport mirrors, driver's remote.
- SS equipment available for Malibu Colonnade Hardtop Coupe includes black finished grille. Sport mirrors. SS emblems. Bright moldings. Striping keyed to body color. Black accented taillight framing. Special instrument cluster. Special front and rear stabilizers. 14 x 7 rally wheels. Wide G70-14 white-lettered tires. (Requires an optional V8 and 4-Speed or Turbo Hydra-matic.)
- Power brakes.
- Variable-ratio power steering.
- Power windows.
- Power door locks.
- Four-Season air conditioning.
- Soft-Ray tinted glass.
- Center console (with bucket seats and optional transmission only).
- Special instrumentation.
- Auxiliary Lighting Group.
- Cruise-Master speed control.
- Comfortilt steering wheel.
- Pushbutton all-transistor radios:
 - AM
 - AM/FM
 - AM/FM/Stereo.
- All feature hidden windshield antenna.
- Integral stereo tape system with AM or AM/FM/Stereo radio.
- Vinyl roof cover in black, white, blue, chamois, green, neutral or red (depending upon exterior body color).
- Wire wheel covers.
- Turbine I wheels.
- Full wheel covers.
- White stripe tires.
- Special front and rear suspension.
- Positraction rear axle.
- Trailing axle ratio.
- Performance axle ratio.
- Heavy-duty battery.
- Heavy-duty radiator.
- Load distributing trailer hitch platform.
- Wiring harness plus a full range of trailing equipment options.

For other Options and Custom Features, see your dealer. Some Options are illustrated on the other side of this sheet.

Facts and Figures

COLONNADE HARDTOP COUPE

Wheelbase	112.0"
Overall length: Laguna	203.9"
Malibu and Deluxe	202.9"
Overall width	76.6"
Height (loaded)	53.1"
Tread: Front	61.5"
Rear	60.7"

COLONNADE HARDTOP SEDAN

Wheelbase	116.0"
Overall length: Laguna	207.9"
Malibu and Deluxe	206.9"
Overall width	76.6"
Height (loaded)	53.8"
Tread: Front	61.5"
Rear	60.7"

MISCELLANEOUS

Luggage space (usable)15.3 cu. ft.
 Tire size: E78-14 (Six); G78-14 (V8)
 Fuel tank rated capacity22 gallons

Colors

Sixteen Magic-Mirror acrylic lacquer finishes, hard, bright and fade-resistant.
 • Beige • Tuxedo Black • Light Blue Metallic • Dark Blue Metallic • Midnight Blue Metallic • Dark Brown Metallic • Chamois • Light Copper Metallic • Green-Gold Metallic • Light Green Metallic • Dark Green Metallic • Midnight Green • Dark Red Metallic • Silver Metallic • Taupe Metallic • Antique White.

ESTIMATE YOUR 1973 CHEVELLE

(Consult salesman or car price sticker)

Price of model selected \$ _____

Popular extras:

- Automatic transmission _____
- Radio _____
- Whitewall tires _____
- Wheel covers _____

Other extras you may want:

- _____
- _____
- _____
- _____

Total of model and extras \$ _____

Trade-in value of present car—estimate or see salesman _____

Difference _____

All illustrations and specifications contained in this literature are based on the latest product information available at the time of publication approval. The right is reserved to make changes at any time without notice in prices, colors, materials, equipment, specifications and models, and to discontinue models. Chevrolet Motor Division, General Motors Corporation, Detroit, Michigan 48202. Litho in U.S.A.

January, 1973

2230E-Rev.



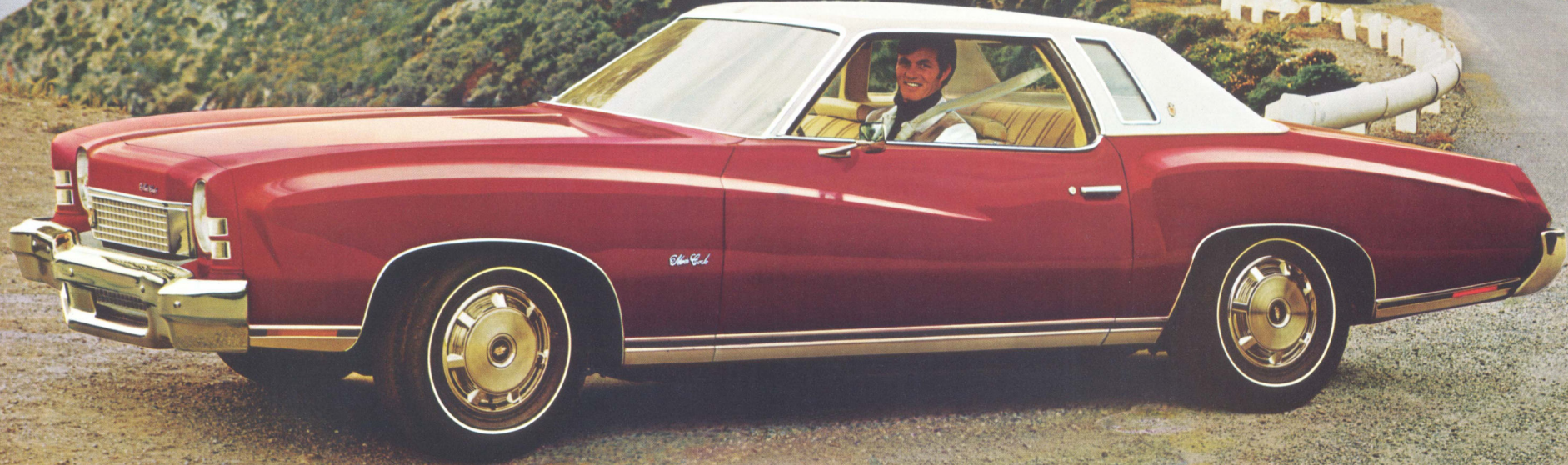
1973 MONTE CARLO



Monte Carlo Landau Coupe



Monte Carlo S Coupe, also shown in large illustration



MONTE CARLO

Standard Features

MONTE CARLO S. Newly restyled, longer and wider with wider tread and advanced suspension for American comfort, European handling. New classic precision-cast grille. Wide-spaced high-output Power Beam single-unit headlights. Gracefully planed and sculpted sheet metal that bends light in subtle ways. New flush-styled door handles. Formal coupe roofline with distinctive rear quarter coach windows, and abbreviated rear deck for a low, pleasing silhouette. Special acoustical package. Body by Fisher.

Full door-glass styling. New improved front bumper system with twin hydraulic cylinders. Hide-A-Way windshield wipers. GR70-15 steel belted radial ply blackwall tires on 15-inch wheels. A separate Monte Carlo Coupe model may be ordered with bias belted ply tires only. Redesigned Full Coil suspension. Rear ride stabilizer. Separate perimeter-type frame. Advanced body mounting system helps reduce road noise and vibration. Power front disc brakes.

Variable-ratio power steering. Automatic ignition key alarm. Flow-through power ventilation. Electric clock. Simulated wood burl accents on instrument panel and steering wheel. Soft-rim steering wheel. Forward-mounted door lock buttons. Long-life exhaust system. Protective inner fenders. Open body sill construction. Sealed side terminal Delco-Eye Energizer battery. Delcotron generator. Coolant recovery system.

MONTE CARLO LANDAU. In addition to features above, the luxurious Monte Carlo Landau also includes special Landau vinyl roof cover. Body-color rear window molding and rear belt moldings. Landau rear quarter nameplate. Body accent striping. Dual body-color sport mirrors (LH remote control, RH manual). Visor vanity mirror. Special Landau door trim panel emblem. 15 x 7 Turbine II wheels.

Interiors

All Monte Carlo interiors are restyled for '73. Color-keyed interiors include deep-twist carpeting; map pockets in doors; molded full-foam front and rear seats.

Luxurious knit cloth and vinyl stan-

dard interior in black, blue, green or red, plus pattern cloth and vinyl in neutral. Available all-vinyl choices in black, green and neutral.

Swing-out Strato-bucket seat interior is available in knit cloth and vinyl in black, blue, green or red.

Swing-out Strato-bucket seat all-vinyl interior is available in black, neutral or green.

Reassurance Features

OCCUPANT PROTECTION

- Seat belts with pushbutton buckles for all passenger positions
- Single-buckle seat and shoulder belts for driver and right front passenger with reminder light and buzzer
- Two front seat head restraints
- Energy-absorbing steering column
- Passenger-guard door locks with forward-mounted lock buttons
- Safety door latches and hinges
- Folding seat back latches
- Energy-absorbing padded instrument panel and front seat back tops
- Thick-laminate windshield
- Padded sun visors
- Safety armrests
- Safety steering wheel
- Cargo guard luggage compartment
- Side-guard beams
- Contoured full roof inner panel.

ACCIDENT PREVENTION

- Side marker lights and reflectors (front side marker lights flash with directional signal)
- Parking lights that illuminate with headlights
- Four-way hazard warning flasher
- Back-up lights
- Lane change feature in direction signal control
- Windshield defroster, washers and dual-speed wipers
- Wide-view inside day/night mirror (vinyl-edged, shatter-resistant glass and deflecting support)
- Outside rearview mirror
- Dual master cylinder brake system with warning light
- Starter safety switch
- Dual-action safety hood latch
- Improved bumper system.

ANTI-THEFT

- Anti-theft ignition key warning buzzer
- Anti-theft steering column lock
- Inside hood latch release
- Multiple key combinations
- Visible vehicle identification
- Tamper-resistant odometer with tell-tale feature.

Power Mates

ENGINES

Turbo-Fire 350-2 V8, *standard*. Two-barrel carburetor. Compression ratio, 8.5:1.

Turbo-Fire 350-4 V8, *available*. Four-barrel carburetor. Dual exhaust. Compression ratio, 8.5:1.

Turbo-Jet 454-4 V8, *available*. Four-barrel carburetor. Dual exhaust. Compression ratio, 8.25:1.

All 1973 Monte Carlo engines are equipped with advanced exhaust emission control systems, and are designed to operate efficiently on all regular grade gasolines including low-lead or no-lead. In addition to the lower exhaust emissions attainable, there are benefits in longer life for your spark plugs, exhaust system and other engine components. If these no-lead, low-lead gasolines are not available, only leaded regular grade gasoline with a research octane number of 91 or higher may be used.

TRANSMISSIONS

3-SPEED manual, *standard*. Column-mounted lever. Forward gears fully synchronized for greater durability and smoother, quieter shifting.

TURBO HYDRA-MATIC, *available*. Column-mounted lever, or floor-mounted when you order bucket seats and center console. Can be shifted manually through three forward ranges, or left in "drive" for automatic shifting.

ENGINES	SAE net hp*	Engine Usage	3-Speed Manual	Turbo Hydra-matic
Turbo-Fire 350-2 V8	145	Std.	Std.	Avail.
Turbo-Fire 350-4 V8	175	Avail.	N A	Avail.
Turbo-Jet 454-4 V8	245	Avail.	N A	Avail.

*Net horsepower ratings, in accordance with Society of Automotive Engineers standards, represent the power output of engines as installed in the automobiles.

Available Options

As we've demonstrated, Monte Carlo's an exceptionally complete car. If you wish to take it still further, you have some interesting decisions to make.

Swing-out Strato-bucket seats.

Vinyl roof cover in black or white with all 16 Magic-Mirror exterior colors. And blue, chamois, green, neutral or red, depending on body color.

Power-operated all-metal Sky Roof.

Pushbutton all-transistor radios:

- AM
- AM/FM
- AM/FM/Stereo.

All feature hidden windshield antenna, deep-cone speakers and variable dial light that dims with panel lights.

Rear-seat speaker.

Integral four-speaker stereo tape system with AM or AM/FM/Stereo radio. Tape cartridges are inserted through radio dial.

Center console can be ordered when swing-out Strato-buckets and automatic transmission are ordered. Trimmed to complement the instrument panel, the console houses shift lever, a concealed compartment and lighting for the rear seat foot area.

Special instrumentation (tachometer, plus needle gauges for ammeter and temperature indication).

- Four-Season air conditioning.
- Rear-window defogger.
- Heavy-duty battery.
- Heavy-duty radiator.
- Heavy-duty Delcotron generator.
- Power seat.
- Power windows.
- Power door lock system.
- Comfortilt steering wheel.
- Wire wheel covers.
- Deluxe wheel covers.
- Turbine II wheels.
- Rally wheels.
- White stripe tires.
- Custom deluxe seat and shoulder belts.

- Remote-control outside rearview mirror.
- Dual sport mirrors.
- Soft-Ray tinted glass.
- Deluxe bumpers.
- Bumper guards.
- Positraction rear axle.
- Trailering axle ratio.
- Special suspension.

- Auxiliary lighting.
- Body side molding.
- Cruise-Master speed control.
- Visor vanity mirror.
- Color-keyed floor mats.
- Door edge guards.

For other Options and Custom Features, please check your dealer. Some Options are illustrated on the other side of this sheet.

Colors

Sixteen Magic-Mirror acrylic lacquer finishes are yours for the choosing.

- Beige
- Tuxedo Black
- Light Blue Metallic
- Dark Blue Metallic
- Midnight Blue Metallic
- Dark Brown

- Metallic
- Chamois
- Light Copper Metallic
- Green-Gold Metallic
- Light Green Metallic
- Dark Green Metallic
- Midnight Green
- Dark Red Metallic
- Silver Metallic
- Taupe Metallic
- Antique White.

Facts and Figures

Wheelbase.....116"
 Length.....210.4"; Width...77.6"
 Height, loaded.....52.2"
 Tread: front....61.9"; rear.....61.1"
 Tire size.....GR70-15
 Fuel tank rated capacity.....22 gals.
 Luggage space.....14.7 cu. ft.

ESTIMATE YOUR 1973 MONTE CARLO

(Consult salesman or car price sticker)

Price of model selected \$ _____

Popular extras:

Automatic transmission _____
 Radio _____
 White stripe tires _____
 Wheel covers _____

Other extras you may want:

_____ _____
 _____ _____
 _____ _____

Total of model and extras \$ _____

Trade-in value of present car—estimate or see salesman _____

Difference \$ _____

All illustrations and specifications contained in this literature are based on the latest product information available at the time of publication approval. The right is reserved to make changes at any time without notice in prices, colors, materials, equipment, specifications and models, and to discontinue models. Chevrolet Motor Division, General Motors Corporation, Detroit, Michigan 48202. Litho in U.S.A.

January, 1973

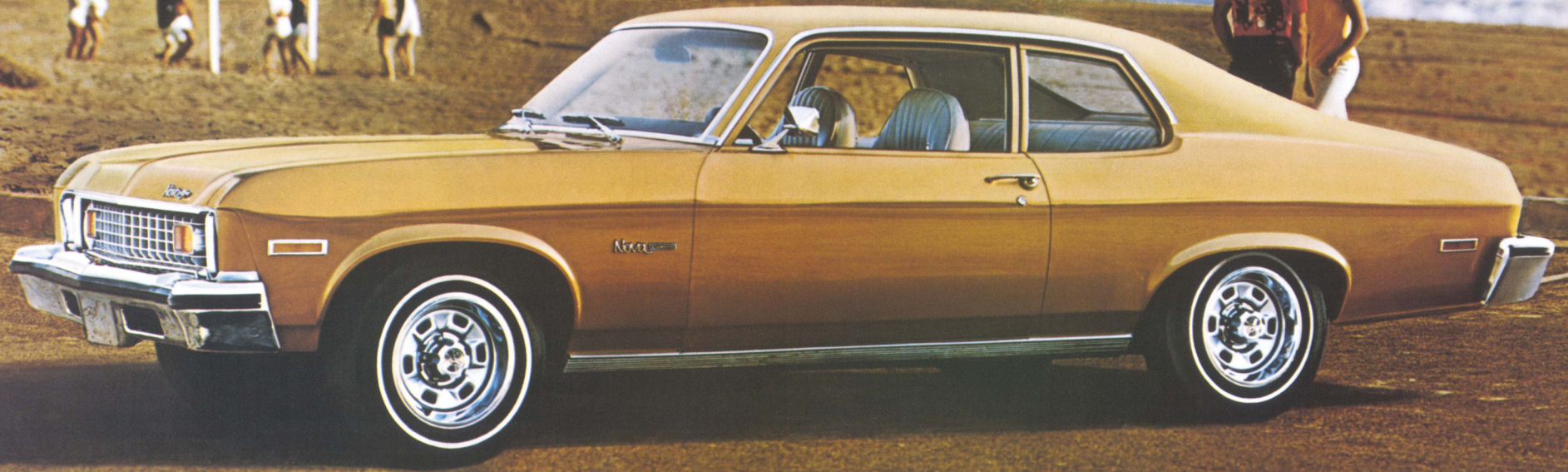
2230D-Rev.



1973 NOVA



Nova Custom Hatchback Coupe



Nova Hatchback Coupe



Nova Custom 4-Door Sedan



Nova Coupe



Nova 4-Door Sedan

Nova Custom Coupe shown in large illustration.

NOVA

Standard Features

New expanded model choice in two series—Nova and new top-luxury Nova Custom. Each series includes new Hatchback Coupe in addition to regular coupe and 4-door sedan. New large-grid silver-finish grille (black on SS), new stronger front bumper, new headlight framing, new parking lights built into grille. New full door glass styling on front doors. New rear quarter window shape. New rear-end look with rectangular dual-unit taillights and new bumper styling. New side-guard door beams. New flow-through ventilation system. Flush-and-dry rocker panels. Sealed side-terminal Delco Energizer battery. Coolant recovery system. Self-adjusting brakes. Computer-selected front and rear springs. New Hatchback Coupe has counter-balanced swing-up rear hatch and folding rear seat back that converts into roomy load area. Nova Custom series includes deluxe bumpers with resilient impact strips; bright accents; and Nova Custom front fender nameplates.

Interiors

For 1973, Nova offers new interior choices.

- NOVA CUSTOM COUPE AND NOVA CUSTOM HATCHBACK COUPE. New neutral or green pattern cloth and vinyl interiors, plus a new Sport Cloth and vinyl black interior with black and white mixed tones on seating areas. Bucket seat interiors also offered in black Sport Cloth and vinyl, plus two all-vinyl choices—black or neutral.
- NOVA CUSTOM SEDAN. Black Sport Cloth and vinyl plus two pattern cloth and vinyl choices, green or neutral.
- NOVA HATCHBACK COUPE AND NOVA COUPE. Three pattern cloth and vinyl choices in black, blue or green. All-vinyl interiors available in black, chamois or green. Bucket seats available in two all-vinyl choices—black or neutral.
- NOVA SEDAN. Two available pattern cloth and vinyl choices—blue or green, and two all-vinyl choices—black or green.

Reassurance Features

OCCUPANT PROTECTION

- Seat belts with pushbutton buckles for all passenger positions
- Single-buckle seat and shoulder belts for driver and right front passenger with reminder light and buzzer
- Two front seat head restraints
- Energy-absorbing steering column
- Passenger-guard door locks with forward-mounted lock buttons
- Safety door latches and hinges
- Folding seat back latches
- Energy-absorbing padded instrument panel and front seat back tops
- Contoured windshield header
- Thick-laminate windshield
- Padded sun visors
- Safety armrests
- Safety steering wheel
- Cargo-guard luggage compartment (except Hatchback Coupe)
- Side-guard beams.

ACCIDENT PREVENTION

- Side-marker lights and reflectors (front side-marker lights flash with direction signal)
- Parking lights that illuminate with headlights
- Four-way hazard warning flasher
- Backup lights
- Lane change feature in direction signal control
- Windshield defroster, washers and dual-speed wipers
- Wide-view inside mirror (vinyl-edged, shatter-resistant glass and deflecting support)
- Outside rearview mirror
- Dual master cylinder brake system with warning light
- Starter safety switch
- Dual-action safety hood latch
- Improved bumper system.

ANTI-THEFT

- Anti-theft ignition key warning buzzer
- Anti-theft steering column lock.

Power Mates

ENGINES

All 1973 Nova engines are equipped with advanced exhaust emission control systems, and are designed to operate efficiently on all regular grade gasolines including low-lead or no-lead. In addition to the lower exhaust emissions attainable, there are benefits in longer life for your spark plugs, exhaust system and other engine components. If these no-lead, low-lead gasolines are not available, any leaded regular grade gasoline with a research octane number of 91 or higher may be used.

- Turbo-Thrift 250 Six, standard. Single-barrel carburetor.
- Turbo-Fire 307 V8, standard. Two-barrel carburetor.

- Turbo-Fire 350-2 V8, available. Two-barrel carburetor.
- Turbo-Fire 350-4 V8, available. Four-barrel carburetor.

TRANSMISSIONS

- 3-SPEED manual, standard. Column-mounted lever. Forward gears fully synchronized for greater durability and smoother, quieter shifting. Floor-mounted shift lever available; included when you order console.
- 4-SPEED manual, available. Fully synchronized. Floor-mounted lever.
- POWERGLIDE 2-range automatic, available. Column-mounted lever.
- TURBO HYDRA-MATIC, available. Column-mounted lever or floor-mounted when you order console. Can be shifted manually through three forward ranges, or left in "drive" for automatic shifting.

ENGINES	SAE net hp*	Engine Usage	3-Speed Manual	4-Speed Manual	Power-glide	Turbo-hydra-matic
Turbo-Thrift 250 Six	100	Std.	Std.		Avail.	
Turbo-Fire 307 V8	115	Std.	Std.			Avail.
Turbo-Fire 350-2 V8	145	Avail.	Std.			Avail.
Turbo-Fire 350-4 V8	175	Avail. (1)		Avail.		Avail.

*Net horsepower ratings, in accordance with Society of Automotive Engineers standards, represent the power output of engines as installed in the automobiles.

(1) Power disc/drum brakes required

Available Options

- SS available for Nova Custom or Nova Hatchback Coupe and Coupe with any engine choice. Includes: black accented grille. SS emblem on grille, fender, deck lid and steering wheel. Tapered body side striping. Black-finished rear panel. Left-hand remote control sport mirror. Right-hand manual-control sport mirror. 14" x 6" rally-style wheels with special center caps. Special front and rear suspension. SS equipment for Nova models also includes the following standard Nova Custom features: Bright parking light and taillight accents. Bright roof drip molding. Color-keyed deep-twist floor carpeting. Load floor carpeting on

Hatchback Coupe.

- Sky Roof. A sliding vinyl roof panel that opens up to deliver more ventilation.
- Space-saver spare tire with a reduced profile to give you more storage space. (Standard on Hatchback Coupe models.)
- Comfortilt steering wheel. New to Nova this year. Tilts to six different positions to accommodate different size persons, adds more comfort to your driving.
- Exterior Decor package: Body side molding with black accent (except Hatchback Coupe or coupe with SS equipment). Bright side window moldings.

- Vinyl roof cover (Touring-style for Hatchback Coupe) available in black or white with any exterior color, as well as blue, chamois, green, neutral or red depending on exterior body color.

- Pushbutton all-transistor radios:
 - AM
 - AM/FM. Both feature hidden windshield antenna, deep-cone speaker and variable dial light that dims with panel lights.

- Variable-ratio power steering.
- Power brakes.
- Power disc/drum brakes.
- White stripe or white lettered tires.
- Four-Season air conditioning.
- Soft-Ray tinted glass.
- Heavy-duty battery.
- Heavy-duty radiator.
- Electric clock.
- Remote-control outside rearview mirror.
- Rear window defogger.
- Strato-bucket front seats for coupe model.

- Center console. (Available with Strato-bucket seats only.)
- Special V8 instrumentation for coupe models with bucket seats and console.
- Special suspension.
- Sport suspension.
- Positraction rear axle.
- Rally wheels.
- Full wheel covers.
- Wire wheel covers.
- Wheel trim rings.

For other Options and Custom Features, see your dealer. Some Options are illustrated on the other side of this sheet.

Colors

Sixteen Magic-Mirror acrylic lacquer colors, 15 new for '73.

- Light Blue Metallic • Dark Blue Metallic • Midnight Blue Metallic • Dark Brown Metallic • Chamois • Light Copper Metallic • Green-Gold Metallic • Light Green Metallic • Dark Green Metallic • Midnight Green • Medium Orange Metallic • Medium Red • Dark Red Metallic • Silver Metallic • Antique White • Light Yellow.

Facts and Figures

Wheelbase 111.0"
 Length 194.3"†; Width 72.4"
 Height: sedan 53.9"
 coupe 52.5"
 Tread: front 59.8"‡; rear 59.6"‡
 Tire size E78-14
 Fuel tank rated capacity 21 gal.
 *Nova SS—Front 60.3"
 Rear 60.1"
 †Nova Custom—195.1"‡

ESTIMATE YOUR 1973 NOVA

(Consult salesman or car price sticker)

Price of model selected \$ _____

Popular extras:

Automatic transmission _____
 Radio _____
 White stripe tires _____
 Wheel covers _____

Other extras you may want:

Total of model and extras \$ _____

Trade-in value of present car—estimate or see salesman _____

Difference \$ _____

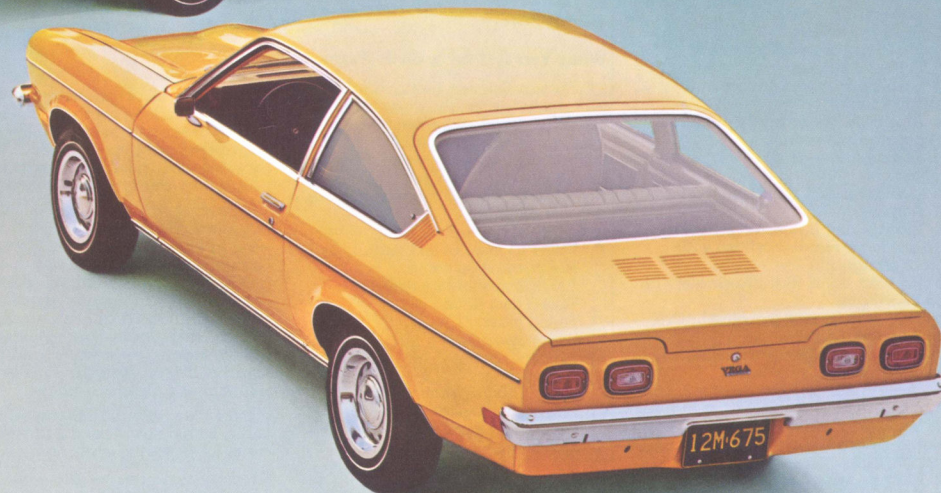
All illustrations and specifications contained in this literature are based on the latest product information available at the time of publication approval. The right is reserved to make changes at any time without notice in prices, colors, materials, equipment, specifications and models, and to discontinue models. Chevrolet Motor Division, General Motors Corporation, Detroit, Michigan 48202. Litho in U.S.A.

January, 1973

2230H—Rev.



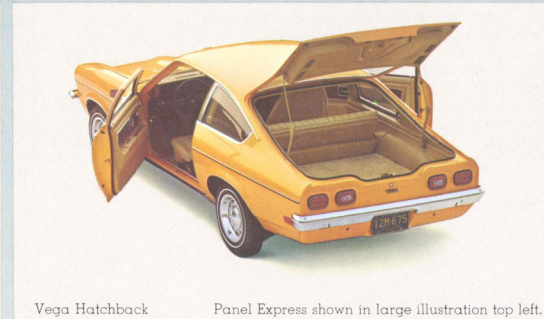
1973 VEGA



Vega Notchback



Vega Kammback



Vega Hatchback

Panel Express shown in large illustration top left.

VEGA

What You Get Without Asking.

- ☑ 140-cubic-inch overhead cam 4-cylinder engine.
- ☑ 10-inch disc front brakes.
- ☑ Front bucket seats (except truck).
- ☑ 3-Speed fully synchronized transmission with floor-mounted shift.
- ☑ Power ventilation system.
- ☑ Power Beam headlights.
- ☑ Front-hinged hood with inside release.
- ☑ 3,635 sq. in. of windows (Notchback).
- ☑ 50,000-mile disposable engine air filter.
- ☑ Electric fuel pump in the gas tank.
- ☑ Bolt-on front fenders.
- ☑ Body by Fisher.
- ☑ Flush-and-dry rocker panels.
- ☑ Full Coil suspension.
- ☑ Cushion-mounted engine and transmission.
- ☑ Delco-tron generator with built-in solid-state regulator.
- ☑ Sealed side-terminal Delco Energizer battery.
- ☑ Contoured full roof inner panel.
- ☑ Ashtray.
- ☑ Side marker lights and reflectors (front side marker lights flash with direction signal).
- ☑ Parking lights that illuminate with the headlights.
- ☑ Four-way hazard warning flasher.
- ☑ Backup lights.
- ☑ Lane-change feature in direction signal control.
- ☑ Windshield defroster, washers and dual-speed wipers.
- ☑ Wide-view inside mirror (vinyl-edged, shatter-resistant glass and deflecting support).
- ☑ Outside rearview mirror.
- ☑ Dual master cylinder brake system with warning light.
- ☑ Starter safety switch.
- ☑ Anti-theft ignition key warning buzzer.
- ☑ Inside hood latch release.
- ☑ Anti-theft steering column lock.
- ☑ Improved bumper system.
- ☑ Seat belts with pushbutton buckles for all passenger positions.
- ☑ Single-buckle seat and shoulder belts for driver and front passenger with reminder light and buzzer.
- ☑ Built-in front seat head restraints.
- ☑ Energy-absorbing steering column.
- ☑ Passenger-guard door locks.
- ☑ Safety door latches and hinges.
- ☑ Folding seat-back latches.
- ☑ Energy-absorbing padded instrument

- panel and front seat-back tops.
- ☑ Instrument panel glove box.
- ☑ Cigarette lighter (except truck).
- ☑ Thick-laminate windshield.
- ☑ Padded sun visors (driver's side only in truck).
- ☑ Safety armrests.
- ☑ Safety steering wheel.
- ☑ Side-guard door beams.
- ☑ Safety wheel rim.
- ☑ Spare tire.
- ☑ A real good jack.
- ☑ Cargo-guard luggage compartment (Notchback only).
- ☑ Do-it-yourself service manual.
- ☑ And more.

What You Get for a Little Extra.

- Custom Exterior (not available with GT). Includes: Bright wheel opening moldings. Black-accented lower body molding. Black-finished body sill. Body-colored door handle accent. Hatchback Coupe also includes belt molding. Notchback Coupe includes bright side window molding.
- White-stripe tires.
- BR70-13 steel-belted radial ply tires.
- AM pushbutton radio.
- AM/FM pushbutton radio.
- Wheel trim rings.
- Tinted glass.
- Power steering.
- Air conditioning.
- Positraction.
- Vega 140-2 engine.
- Rear seat speaker.
- Swing-out rear quarter windows (coupes only).
- Adjustable driver's seat back.
- And others.

Plus such available dealer-installed accessories as:

Luggage carrier, electric clock, bumper guards, door-edge guards, fire extinguisher, litter container.

GT Hatchback and Kammback.

A GT Vega is available for Hatchback Coupe or Kammback. Includes: Vega 140-2 engine. Special instrumentation with tachometer, ammeter, temperature gauges and clock. Assist handle built into instrument panel

pad. Four-spoke sport steering wheel. Adjustable driver's seat back. Wood-grain accents on instrument cluster. Black-finished grille and body sill. Bright grille outline. Black-accented lower body molding. Body-colored door handle accent. Parking lights with clear lenses and amber bulbs. Nameplate on front fender. Special suspension components including front and rear ride stabilizers. Special 13 x 6 GT wheels with bright trim rings and special center caps. A70—13 bias belted ply white-lettered tires. Hatchback Coupe also includes belt molding.

Power Mates.

THE ENGINE. Vega has a lot of engine for a little car. A 140-cubic-inch overhead cam four with a die-cast aluminum-alloy block. Notable capabilities include brisk acceleration, quiet performance, great durability and low maintenance.

If you compare, you'll find our Vega 140 engine is considerably larger than you'll find in most little cars, yet it's very economical. The added size, made possible by the lightweight aluminum-alloy block, lets the engine turn more slowly and easily at cruising speeds, which saves wear. Four-cylinder simplicity means fewer parts, and the overhead cam design means fewer still. All told, it's quite an engine.

There is a version of this engine available, with a new staged 2-barrel carburetor for improved operation.

All 1973 Vega engines are equipped with advanced exhaust emission control systems, and are designed to operate efficiently on all regular grade gasolines including low-lead or no-lead. In addition to the lower exhaust emissions attainable, there are benefits in longer life for your spark plugs, exhaust system and other engine components. If these no-lead, low-lead gasolines are not available, any leaded regular grade gasoline with a research octane number of 91 or higher may be used.

TRANSMISSIONS, AXLE RATIOS.

Standard: 3-Speed fully synchronized.

Available: Powerglide (2-range automatic).

Turbo Hydra-matic (3-range), 4-Speed manual.

Three axle ratios are available.

For best fuel economy: 2.53:1.

For best performance: 3.36:1.

And a happy medium: 2.92:1.

(Availability depends on engine and transmission. Ask your salesman.)

Engines	SAE net hp**	3-Speed	4-Speed	Powerglide	Turbo Hydra-matic
Vega 140	72	*	*	*	*
Vega 140-2	85	*	*	*	*

*Standard.
**Net horsepower ratings, in accordance with Society of Automotive Engineers standards, represent the power output of engines as installed in the automobiles.

Inside Stuff.

Notchback, Hatchback and Kammback standard interiors include all-vinyl foam-filled bucket seats, deep-twist carpeting, 2-spoke steering wheel, power ventilation system, tunnel-mounted transmission control and parking brake. In the Hatchback Coupe and Kammback you also get a fold-down rear seat and concealed storage area under the load floor. And this year you get a choice of six interior colors (black, neutral, green, saddle, red, chamois). Decor Group is available for the Notchback only and includes sliding adjustment for passenger's bucket seat (standard with Hatchback or Kammback) plus exterior side window moldings. The Custom Interior is available for all models except truck in two cloth and vinyl choices (black or blue with mixed-tone seating areas); plus six all-vinyl selections (black, green, neutral, red, chamois, saddle) depending on model. Custom Interior luxury features include: wood-grained accents on doors and sidewalls, assist handle built into instrument panel pad, day-night rearview mirror, automatic dome light switch on RH door, rear seat ashtrays, and extra sound-proofing. Hatchback Coupe also includes sliding adjustment for passenger's bucket seat and bright trim on parking brake handle and floor shift trim plate.

Panel Express interior is available in black or green with matching front compartment trim (doors, headlining and instrument panel pad); seat trim is light pearl all-vinyl with either

interior. Cargo area and exposed interior metal surfaces are keyed to exterior color.

Vega Colors.

Ten baked-on acrylic lacquer colors are available for Vega:

- White • Silver Metallic • Light Orange
- Light Yellow • Medium Blue • Midnight Green • Medium Green Metallic • Medium Bronze Metallic • Medium Red • Chamois.

Some Added Details.

Vega has a little something more wherever you look. A disposable engine air filter that lasts up to 50,000 miles under normal driving conditions, an electric fuel pump with a device that automatically cuts off the fuel supply if low oil pressure should threaten to harm your engine, a special primer process that

protects against body corrosion, an inside hood release, flow-through power ventilation, wide standard tires and many more details that make Vega a lot of little car.

Vega Statistics.

Wheelbase 97 inches
Total length 172.2 inches
Width 65.4 inches
Height (Notchback) 51.9 inches
Curb weight (Notchback) 2,268 lbs.
Glass area (Notchback) 3,635.4 sq. inches
Tread, front 55.2 inches
Tread, rear 54.1 inches
Turning circle, curb to curb 33 feet
Passengers (truck) 1
Passengers (other) 4
GVW range (truck) 3,050-3,290 lbs.
Nominal load rating (truck) 800 lbs.
Tire size A78-13
Fuel tank rated capacity 11 gals.

Do-It-Yourself Estimator.

Base price \$ _____

Available engine? _____

Transmission (3-Speed is standard)? _____

Custom Interior? _____

Decor Group for Notchback Coupe? _____
(Sliding adjustment for passenger seat, side window moldings)

Power steering? _____

Radio (AM or AM/FM)? _____

Air conditioning? _____

White-stripe tires? _____

Wheel trim rings? _____

Other? _____

Total \$ _____

See. With an economical little Vega you can add a lot of equipment and still end up with a modest price.

All illustrations and specifications contained in this literature are based on the latest product information available at the time of publication approval. The right is reserved to make changes at any time without notice in prices, colors, materials, equipment, specifications and models, and to discontinue models. Chevrolet Motor Division, General Motors Corporation, Detroit, Michigan 48202. Litho in U.S.A.

September, 1972

22301

