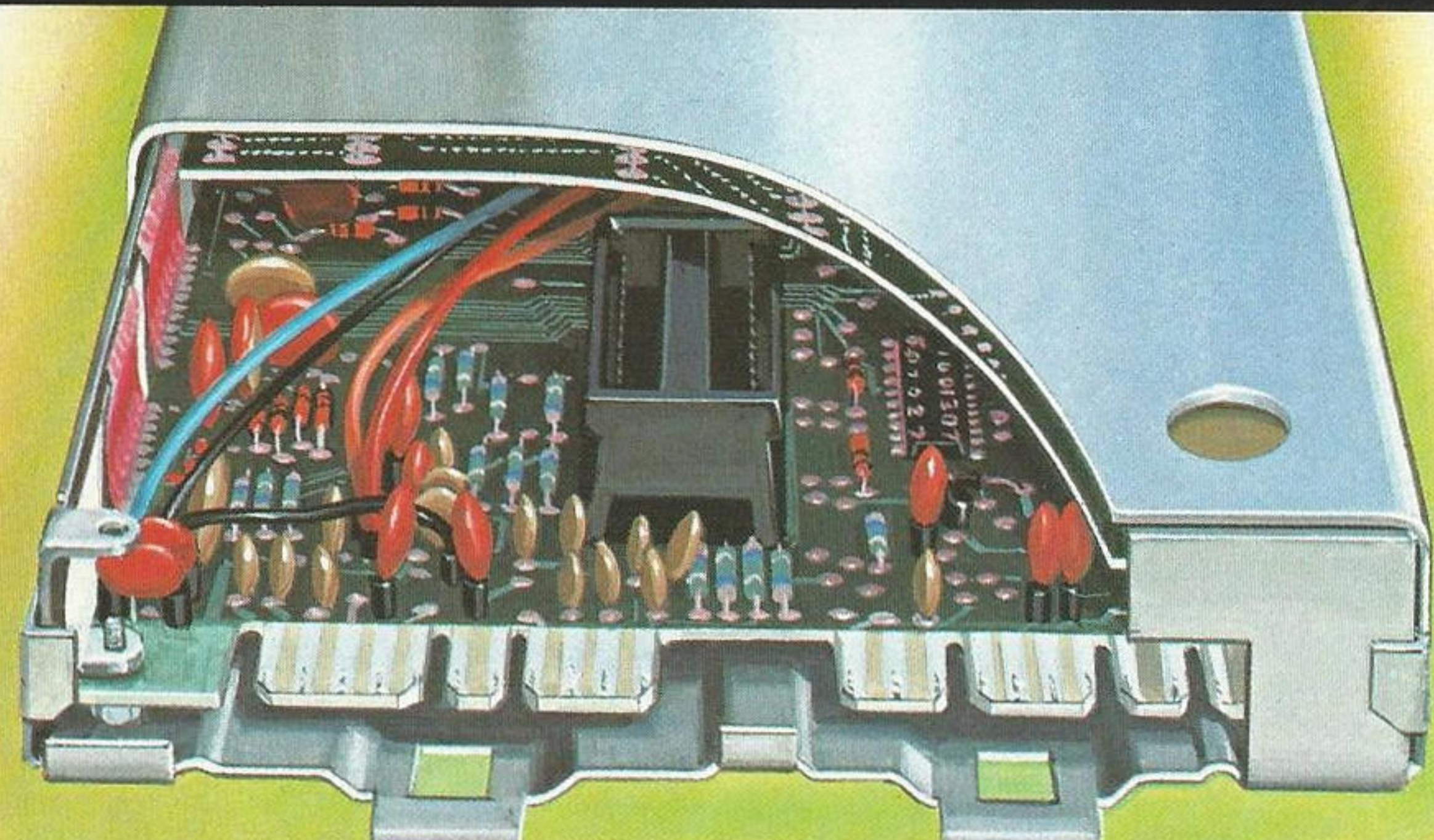


A futuristic digital landscape with a glowing circuit board in the center, set against a background of a city skyline and a grid of green lines.

**IF YOUR CAR DOESN'T HAVE THE  
ENGINE TECHNOLOGY TO ADJUST ITSELF,  
IT'S OUT OF TUNE WITH THE TIMES.**

# CHEVROLET OFFERS YOU THIS KIND OF ADVANCED TECHNOLOGY. AT A CHEVROLET PRICE.



## COMPUTER COMMAND CONTROL

It continuously monitors and adjusts your engine as you drive.

### FROM THE PEOPLE WHO HELPED TAKE US TO THE MOON.

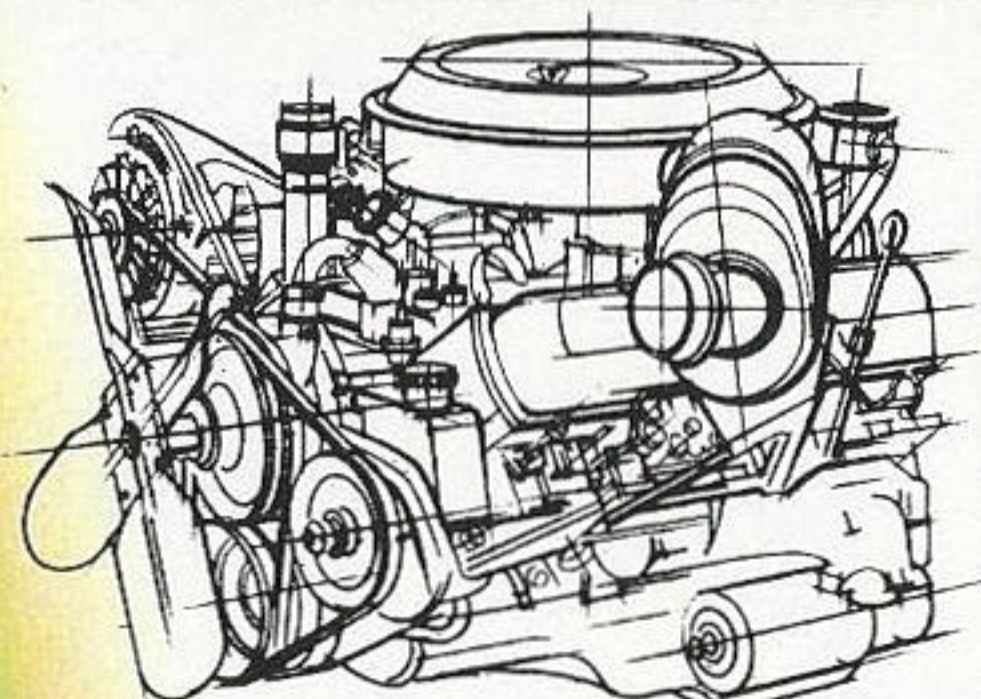
Delco Electronics, the same General Motors group who helped develop the computer guidance system that took the Apollo astronauts to the moon and back, gave us the Computer Command Control. It's an on-board computer, born of the space age, designed to make all our 1981 gasoline engines the cleanest burning in Chevrolet's history. This solid-state electronic module analyzes engine performance thousands of times per second. Then adjusts engine performance several times each minute as you drive. Air-fuel mixtures are adjusted. Helps adjust for temperature, altitude and barometric pressure. Best of all, we believe the Computer Command Control will help Chevrolet Motor Division achieve the highest average fuel economy in its history.\*

### SO RELIABLE IT'S BACKED BY A 5-YEAR/50,000-MILE WARRANTY THAT COVERS THE ENTIRE EMISSIONS SYSTEM.\*\*

That's comforting. So is the fact that many components of the Computer Command Control have successfully completed more than 15 million miles of driving. But if something should ever go wrong, the unit is self-diagnostic. It checks up on itself to help pinpoint problems for the service technician. It's a perfect example of the way Chevrolet puts the latest technology to work for you.

*\*This is a measure of Chevrolet Motor Division's fuel economy based on a projected sales-weighted average of the EPA combined mileage estimates for all Chevrolet passenger cars produced this model year.*

*\*\*Be sure to ask your dealer for complete details.*



### DIESEL POWER. NO PLUGS, NO POINTS, NO FOOLING.

You never need a conventional tune-up because our diesel doesn't have spark plugs, distributor or carburetor to service or replace. What it does have is surprising economy, response and smoothness.† It's optional on Caprice Classic and Impala Wagons.

### OUR TOUGH LITTLE 4-CYLINDER GETS A+ FOR ECONOMY.

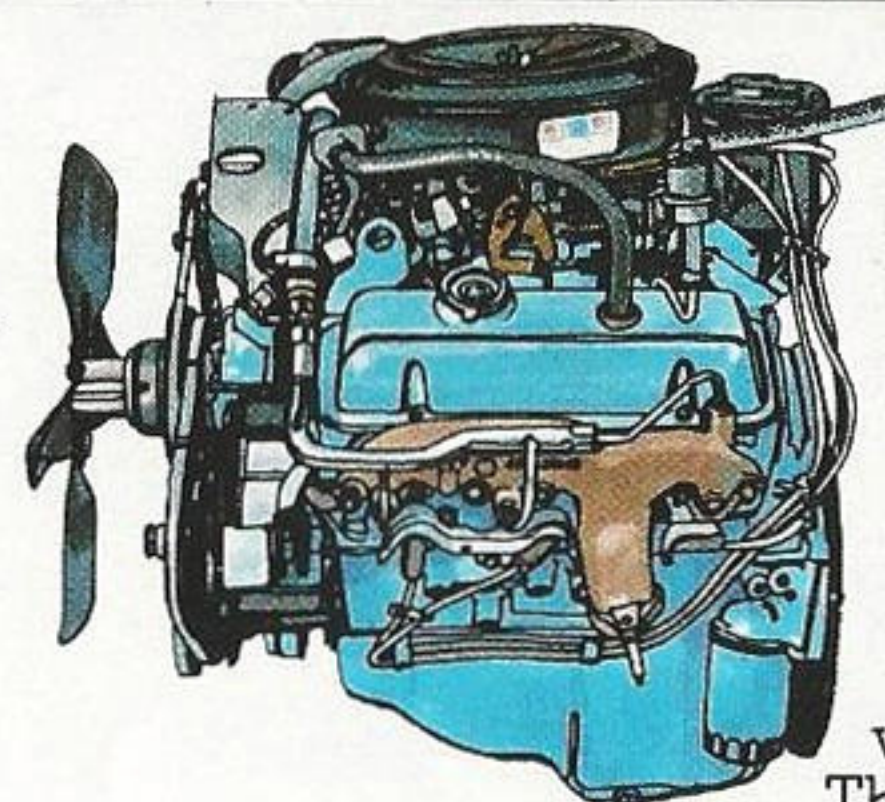
Good things do come in small packages.

The 1.6 Liter and 2.5 Liter engines we offer can shoulder your loads while putting the squeeze on fuel.† A lot are already on the road, with a lot of satisfied owners behind them. Standard on Chevette (1.6 Liter) and Citation (2.5 Liter).

### FRONT-WHEEL DRIVE. YOU GET MORE ACTION FROM TRACTION.

We put the driving power up front where the engine weight is. So, you get more traction than with conventional rear-wheel drive. Your tires can really grab hold on slippery or imperfect road surfaces. Best of all, you get it standard on Citation.

*†See following pages for specific EPA mileage estimates.*



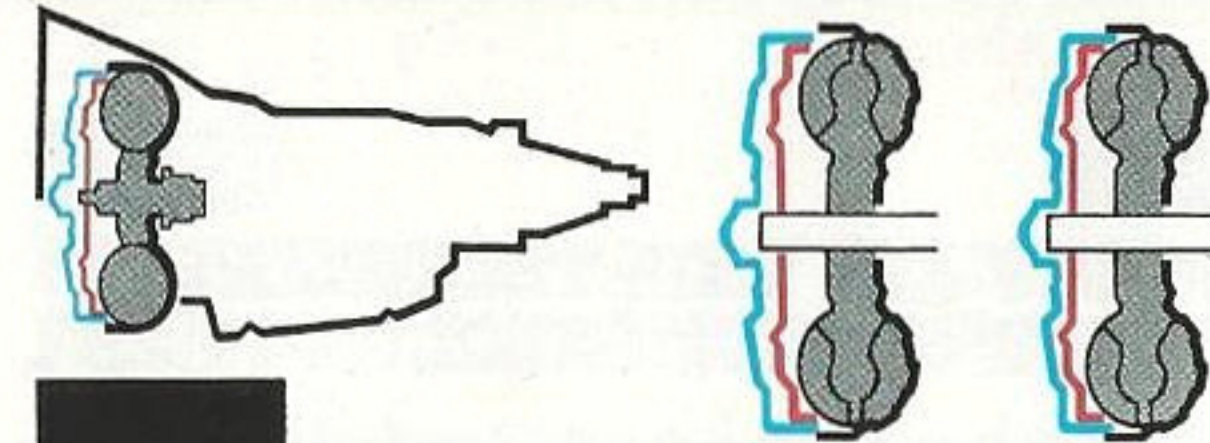
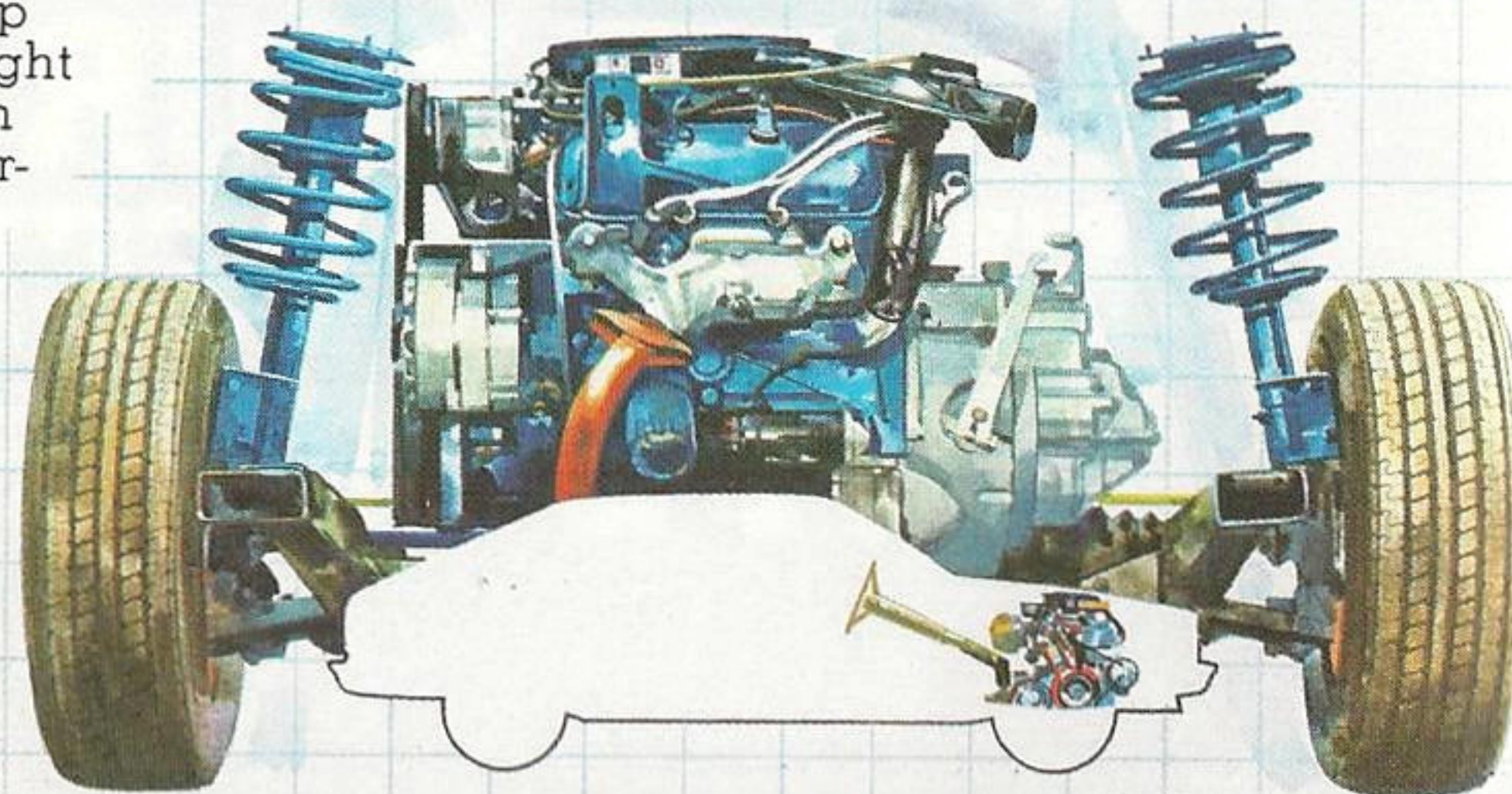
### V6 ECONOMY, SMOOTHNESS.

Take the best design elements of a six-cylinder and a V8 and what do you get? The V6 engine.

"V" design gives you lightness and balance. Six-cylinder design gives you economy.† And the whole package is compact for light weight and easy service. Now that's a winning combination you'll like. Standard on Caprice and Impala (except wagons), Monte Carlo, Malibu and Camaro (except Z28).

### TURBOCHARGING: POWER OUT OF THIN AIR.

You read it right. Exhaust gases are recirculated and become the power source. They turn a compressor that forces fuel and air under pressure into the combustion chamber. What it means is up to 54% more horsepower on demand. You'll appreciate it when passing, merging or hill-climbing. Available only on the Monte Carlo V6.

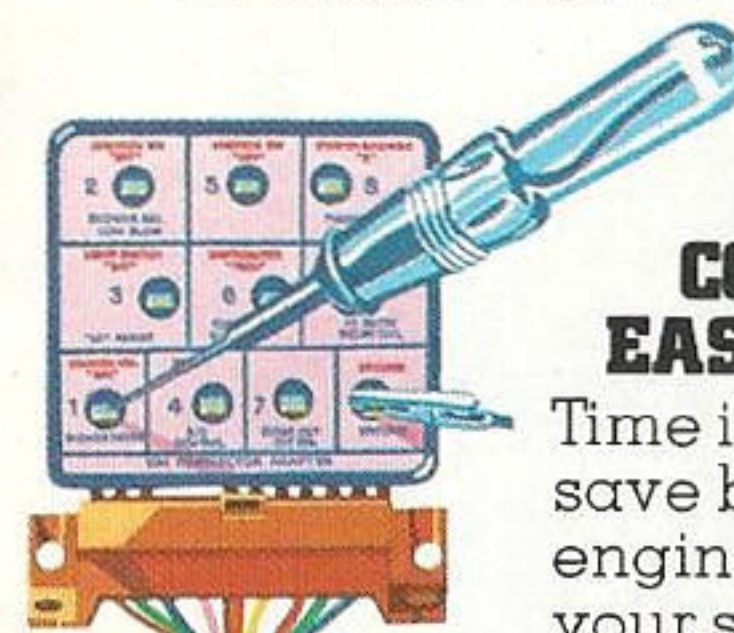


### TORQUE CONVERTER CLUTCH. YOUR ECONOMY CONNECTION.

The shortest distance between two points is a straight line. Apply that principle to an automatic transmission and you wind up with a fuel-saving idea. Both automatic and automatic with overdrive transmissions have a direct mechanical connection between engine and rear axle. This torque converter clutch engages automatically at highway speeds for more efficient transfer of power to the rear wheels—eliminating the fuel-robbing slippage found in conventional automatics. For Malibu, Monte Carlo, Caprice, Impala and Camaro.

### MORE ECONOMY. AUTOMATIC TRANSMISSION WITH OVERDRIVE.

It's really a fourth gear. Overdrive has a less than 1:1 ratio of turning speed to the engine. So you get performance with fewer RPMs. Less fuel consumption. And it all happens automatically. Available on selected models.



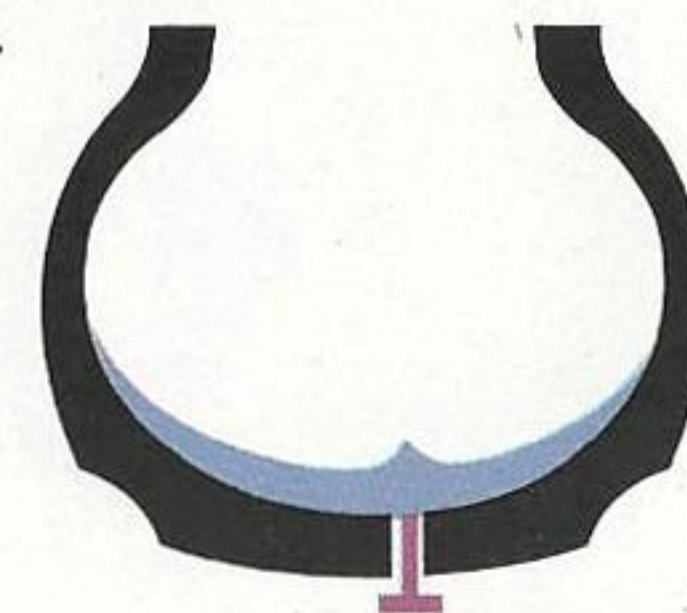
### THE RIGHT CONNECTION FOR EASY SERVICE.

Time is money. We think you'll save both with our diagnostic engine connector. It enables your service technician to perform up to 25 electrical checks quickly and efficiently. Featured on Caprice, Impala and Chevette.

### TIRES THAT ROLL EASIER, TIRES THAT SEAL THEMSELVES.

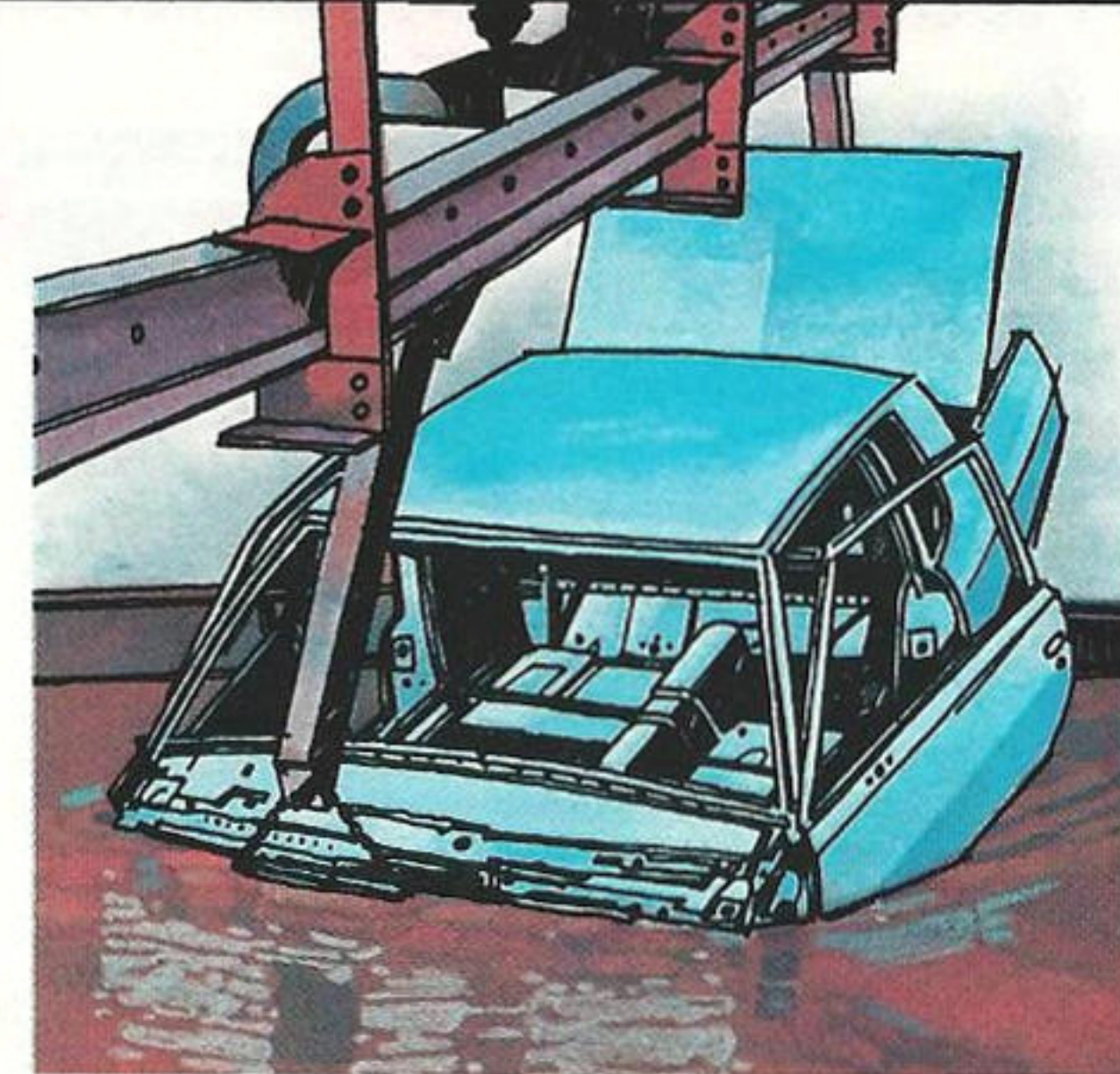
A new tread compound, plus high pressures on many standard equipment tires, reduces rolling resistance for long life and added fuel economy.

And you'll keep right on rolling with puncture sealant tires. A special rubber compound inside seals 90% of repairable punctures 3/16-inch or less. Available on Caprice and Impala.



### WIND TUNNEL TESTING FOR A WINDFALL OF GOOD IDEAS.

Stylishness is a fringe benefit of aerodynamic styling. Our new Chevrolets look good at the fuel pump too, thanks to "slip stream" design. Wind tunnel and computer testing help us achieve less air resistance. So you get added economy. As well as lower wind turbulence and noise. And GM now has the only full-size automotive wind tunnel in America.



### THEY'RE SPRAYED, DIPPED AND BAKED.

All to keep rust on the run and your Chevrolet looking good. Every square inch of exposed surface is treated with spray or dip primers, depending on the Chevy you choose. Zinc-rich pre-coated steel is used for most lower body panels. A surface primer is followed by baked-on acrylic color topcoats. Lasting beauty never looked so good.

### THIS IS THE BRAKE YOU'VE BEEN LOOKING FOR.

Fuel economy in braking? Sure, if "drag" can be reduced. Which is what has been done with our redesigned low-drag front disc brakes. There's less rolling resistance than with regular disc brakes. Also new on many models is a translucent master cylinder reservoir for easy visual checks without removing the cover. Featured on Caprice, Impala, Camaro and Citation.



### NO WONDER CHEVROLET IS AMERICA'S SALES LEADER.

Our commitment to automotive excellence has kept Chevrolet in front for over 20 years. You benefit by getting outstanding value for your money. And, dollar for dollar, Chevrolets are actually a better value today than in the past. Why? Because improved technology has delivered such rewards as better fuel economy, less scheduled routine service and improved anti-corrosion techniques.

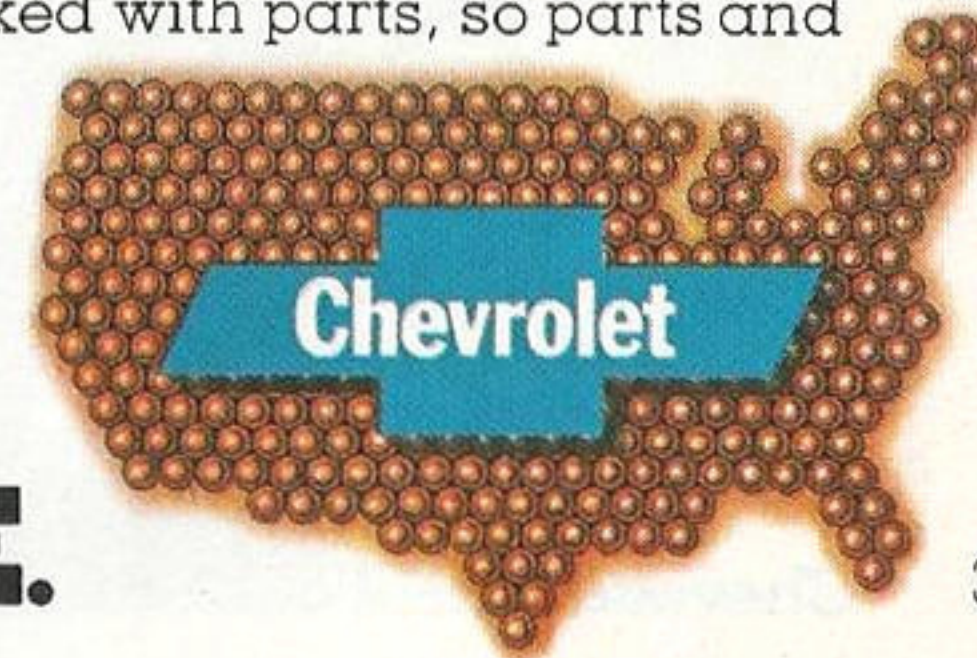


### MORE FOREIGN CAR OWNERS SWITCH TO CHEVROLET THAN ANY OTHER MAKE. THEY MUST KNOW SOMETHING.

It's a fact. When it came time to trade, more foreign car owners came to Chevrolet during the last model year. And it just could be because Chevrolet has all the value worth coming home to. Think about it when it comes time to consider Chevrolet as your next purchase.

### NOBODY HAS MORE DEALERS THAN CHEVROLET.

When you want us, you've got us. No matter where you live or travel. Nearly 6,000 Chevrolet dealers are ready to sell, lease and service their products at locations from coast to coast. They're well stocked with parts, so parts and service are nearby.



## THE BOTTOM LINE IS DURABILITY, DEPENDABILITY AND VALUE.

# CHEVETTE

America's best-selling small car for a lot of practical reasons.

## ONE TOUGH SON-OF-A-GUN.

That's Chevette all over. And for over five years it has shown itself to be one tough competitor. It's a solid value with such quality design features as double-panel door, hood and deck-lid construction. Full Coil suspension. Inner fenders. Unitized body construction. And more. So tough it's popular as a fleet car for airport rentals.

## IMPROVED FUEL ECONOMY.

Check out the 1981 EPA figures below. Chevette's EPA estimated 30 MPG is an impressive 15% improvement over its 1980 EPA estimate with the same standard 1.6 Liter L4 engine and 4-speed manual transmission.

## MILEAGE ESTIMATES

**30** EPA EST. MPG **39** HWY. EST.

With standard engine and transmission. Remember: Compare the "estimated MPG" to the "estimated MPG" of other cars. You may get different mileage, depending on how fast you drive, weather conditions, and trip length. Actual highway mileage will probably be less than the estimated highway fuel economy.

## OUR LOWEST-PRICED CAR HAS HIGH STANDARDS.

Just because Chevette is an economy car doesn't mean we've skimped on quality. For its low price you still get a fold-down rear seat, cut-pile carpeting, front bucket seats, carpeted rear seat back, removable load floor carpet, bumper guards and rub strips, plus styled steel wheels.



Coupe and sedan standards also include reclining front bucket seats, Delco AM radio, sport steering wheel,

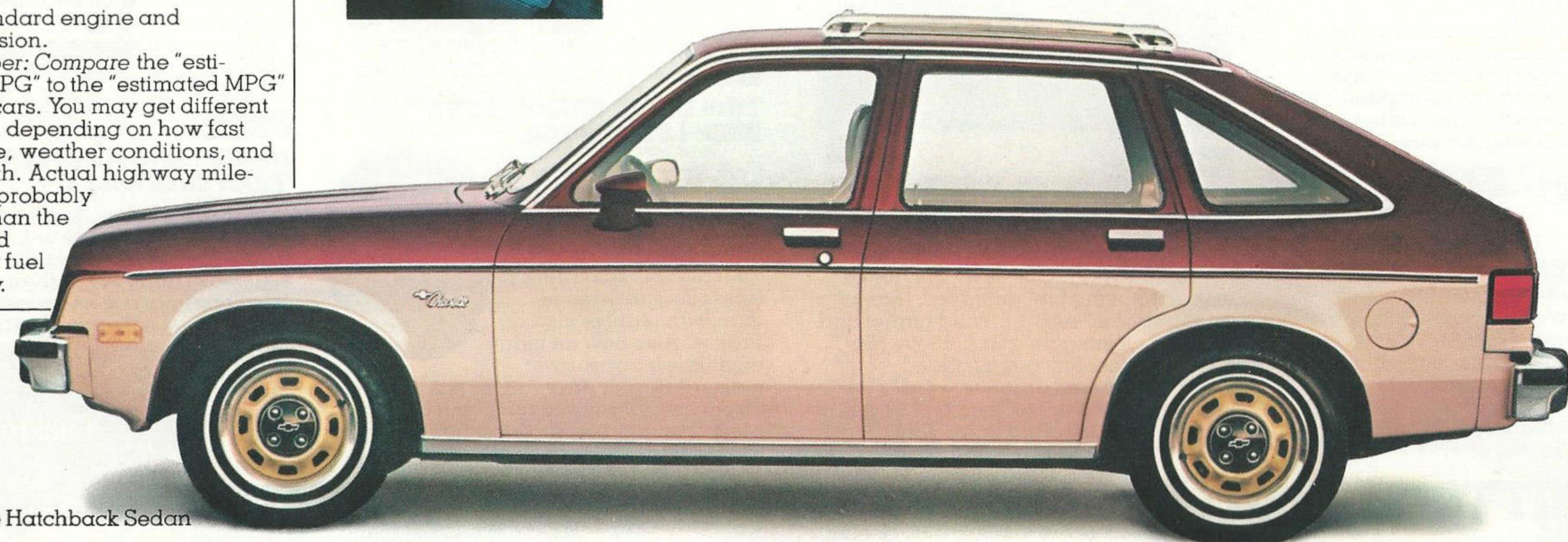
center console and white-stripe tires, among others. All wrapped up handsomely with new exterior touches like a bright-accented black grille on coupe and sedan models. Models available include Hatchback Sedan, Hatchback Coupe and the budget-conscious Scooter.



Chevette Hatchback Coupe

## YOU GET ALL THIS TECHNOLOGY AT A CHEVROLET PRICE.

- Computer Command Control
  - 1.6 Liter 2-Bbl. L4 engine
  - Four-speed manual transmission
  - Rack-and-pinion steering
  - High Energy Ignition system
  - Self-adjusting front disc/rear drum brakes
  - Delco Freedom II battery
  - Diagnostic connector
  - Aerodynamic styling
  - Long recommended service intervals
  - Anti-corrosion measures
- See your Chevrolet dealer for more features.



4 Chevette Hatchback Sedan

# CITATION

Over half a million owners already know how well it works.

## IT'S AMERICA'S BEST-SELLING FRONT-WHEEL-DRIVE CAR.

All told, it's the best-selling model Chevrolet has ever introduced. And the reason could very well be its front-wheel drive, with three-and-one-half billion miles of actual owner usage behind it. It works to your advantage: With pulling power applied to the front wheels where engine weight is, Citation can help you maneuver very neatly over imperfect roads. And give

you added traction on sand, dirt or gravel. Or even tow up to 2,000 pounds with recommended equipment. Competitively, you'd have to go a long way to find a more experienced front-wheel-drive car.



## SEATS FIVE IN SMOOTH-RIDING COMFORT.

According to EPA specifications, Citation is a mid-size on the inside. Which means up to five adults can sit in comfort. And Full Coil suspension helps keep the bumps on the road and out of the car.

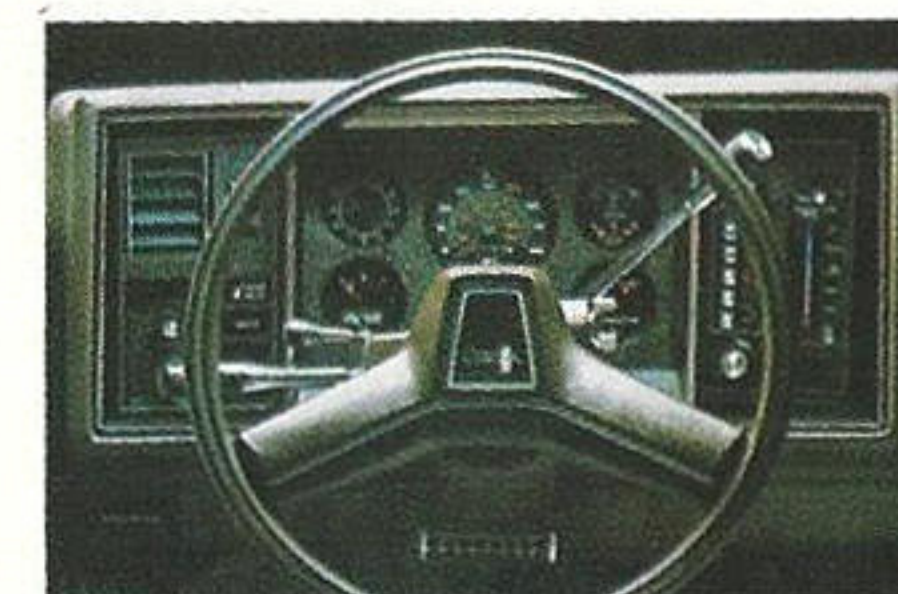
## MILEAGE ESTIMATES

**22** EPA EST. MPG **35** HWY. EST.

With standard engine and transmission. Remember: Compare the "estimated MPG" to the "estimated MPG" of other cars. You may get different mileage, depending on how fast you drive, weather conditions, and trip length. Actual highway mileage will probably be less than the estimated highway fuel economy.



Citation Hatchback Sedan



## IT'S A HATCHBACK AND A WHOLE LOT MORE.

Actually, the 1981 Citation is a lot of cars in one. Load up the cargo area and it's a station wagon. With the luggage compartment cover removed and the rear seat down, there's over 41 cubic feet of cargo space. Or order the optional X-11 package and Citation becomes a sporty number with an abundance of good looks and response. Citation is available in Hatchback Coupe and Hatchback Sedan models.



Citation Hatchback Coupe with X-11 package

## YOU GET ALL THIS TECHNOLOGY AT A CHEVROLET PRICE.

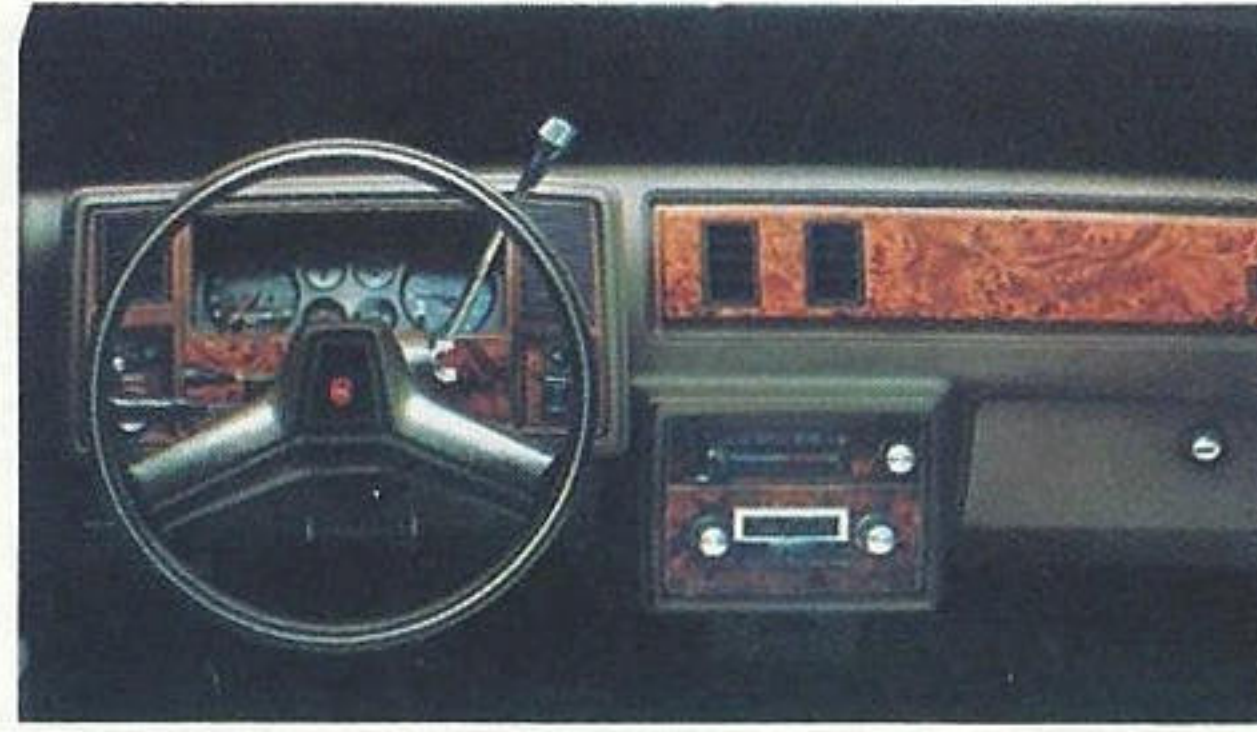
- Computer Command Control
  - 2.5 Liter 2-Bbl. L4 engine
  - 4-speed manual transmission
  - Rack-and-pinion steering
  - High Energy Ignition system
  - Delco Freedom II battery
  - Self-adjusting low-drag front disc/rear drum brakes
  - V6 engine available
  - Front-wheel drive
  - Aerodynamic styling
  - New tire technology
  - Long recommended service intervals
  - Anti-corrosion measures
- Take a test ride and learn more about Citation.

# MALIBU

GM's lowest-priced six-passenger car, but you'd never know it to look at it.

## BETTER THAN EVER.

On a price-value basis, the 1981 Malibu is pure dynamite. It's hard to think of it as a family car. Because it's loaded with style, is solidly built, yet you don't have to mortgage yourself to the hilt to buy it. On top of all that, Malibu has the up-to-date features that keep it in tune with the times. That includes all the technology listed at the right, plus Full Coil suspension, full-perimeter frame, cushioned body mounting system and power steering.



## KEEP SMILING. THE V6 KEEPS FUEL COSTS LOW.

Easy to buy, easy to get around in. What more could you ask? How about being easy on fuel? The standard 3.8 Liter V6 offers all the pep you'd expect and all the economy you wouldn't expect. Which is all pretty nice to have in a family-size car. Take a test drive at your Chevrolet dealer and see for yourself.

## NO MID-SIZE SEDAN HAS MORE ROOM INSIDE.

Six friends can sit inside Malibu and still remain friends. And besides ample leg, shoulder, hip and head room, Malibu also includes almost 17 cubic feet of space in the trunk. Nice to know when you've got that extra suitcase nobody planned for. What family could resist a car like that? Available in Sport Coupe and Sport Sedan models.



## YOU GET ALL THIS TECHNOLOGY AT A CHEVROLET PRICE.

- Computer Command Control
  - 3.8 Liter V6 engine
  - Full-perimeter frame
  - High Energy Ignition system
  - Delco Freedom II battery
  - Self-adjusting power front disc/rear drum brakes
  - Aerodynamic styling
  - New tire technology
  - Long recommended service intervals
  - Anti-corrosion measures
- And even more value features

## MILEAGE ESTIMATES

**19** EPA EST. MPG **26** HWY. EST.

With standard engine and optional automatic transmission. Remember: Compare the "estimated MPG" to the "estimated MPG" of other cars. You may get different mileage, depending on how fast you drive, weather conditions, and trip length. Actual highway mileage will probably be less than the estimated highway fuel economy.



Malibu Classic Sport Sedan

# MONTE CARLO

You'll take pride in its style. We take pride in its quality.

## LOOKING GOOD. INSIDE AND OUT.

All it takes is one glance to know that Monte Carlo has been restyled for 1981. Aerodynamically reshaped. And refined. Styling is crisp and uncluttered. Yet underneath all the beauty is a solidly engineered and manageable driving machine. A heavily ribbed and formed underbody adds strength and quiet. Doors, hood and deck lid are double-panel construction. Even the fenders have fenders inside for an extra measure of corrosion protection. Monte Carlo is built beautiful to stay beautiful. Check one out at your Chevrolet dealer.

## YOU GET PRACTICAL FEATURES AT A PRACTICAL PRICE.

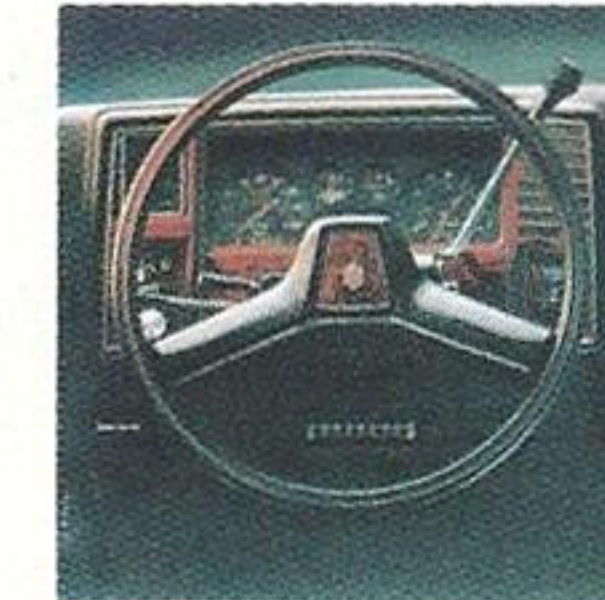
Step inside Monte Carlo. You'll find it luxurious, yet functional. With elegant appointments from the carpeted floor to the padded acoustical ceiling. Seating room is generous. Cloth bench seats are standard. Instrument panel features simulated wood-grain facing and instru-



mentation is conveniently arranged for easy sight and reach. Power steering, power brakes and automatic transmission are standard. Even the trunk is bigger than last year. Obviously, Monte Carlo has a lot going for it. And it's priced less than you might think.

## TURBOCHARGING MAKES IT EVEN BETTER.

V6 power is standard. Which is impressive enough. But add the available turbocharged V6 and you've got a real efficiency story. When you need the power to pass, merge or climb a hill, the turbocharger gives you a boost. Take your foot off the pedal and normal performance returns. A very worthwhile option. Monte Carlo is available in Sport Coupe and Landau models.



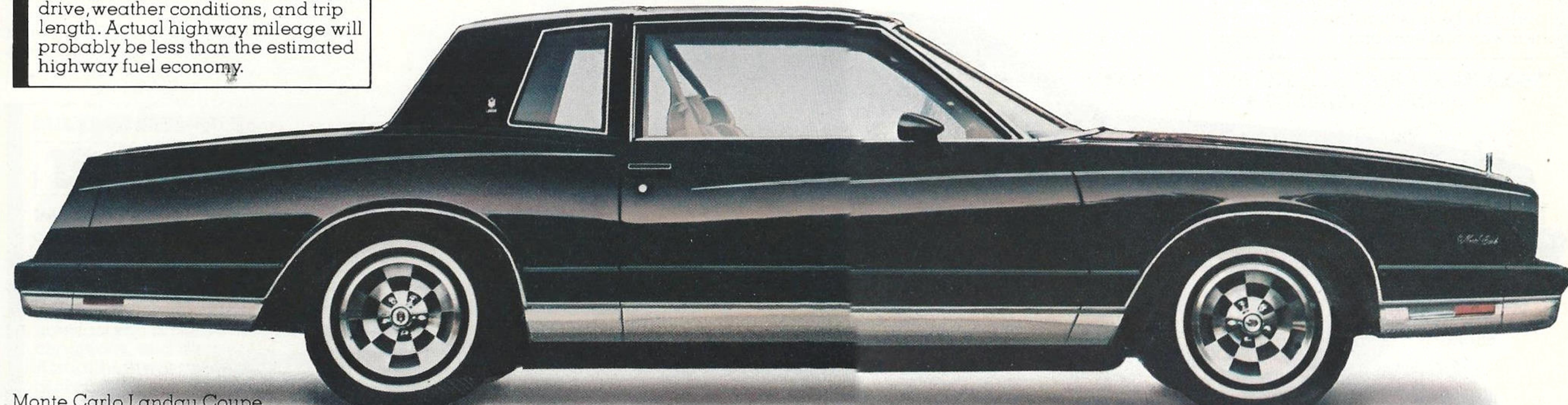
## YOU GET ALL THIS TECHNOLOGY AT A CHEVROLET PRICE.

- Computer Command Control
  - 3.8 Liter V6
  - Turbocharged V6 optional at extra cost
  - Automatic transmission with torque converter clutch
  - Cushioned body mounting system
  - High Energy Ignition system
  - Delco Freedom II battery
  - Self-adjusting power front disc/rear drum brakes
  - Aerodynamic styling
  - New tire technology
  - Long recommended service intervals
  - Anti-corrosion measures
- Plus a lot more

## MILEAGE ESTIMATES

**19** EPA EST. MPG **26** HWY. EST.

With standard engine and transmission. Remember: Compare the "estimated MPG" to the "estimated MPG" of other cars. You may get different mileage, depending on how fast you drive, weather conditions, and trip length. Actual highway mileage will probably be less than the estimated highway fuel economy.



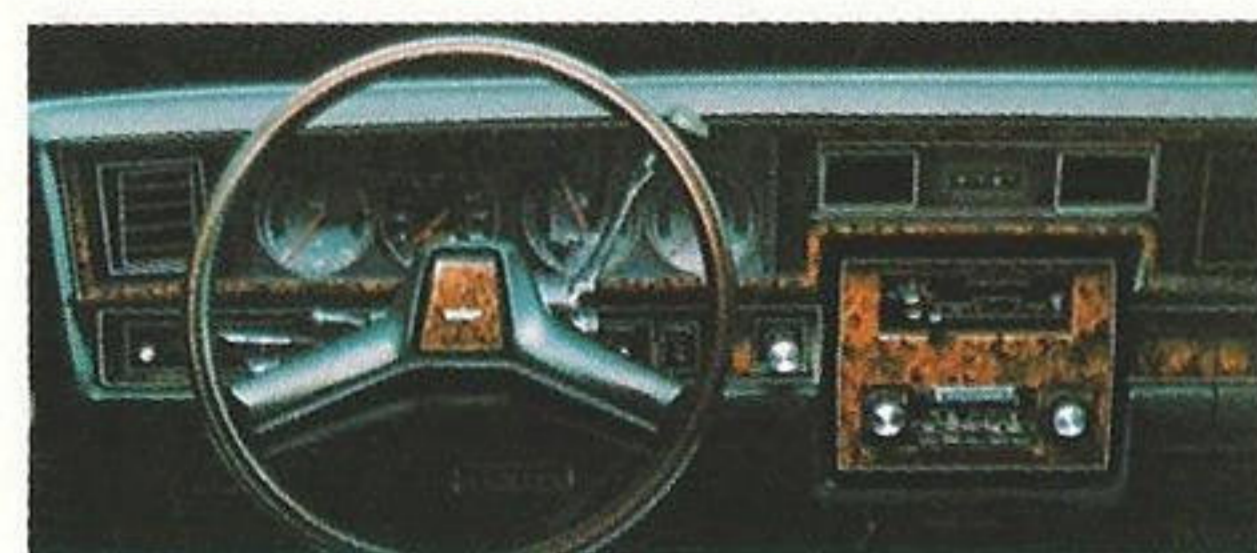
Monte Carlo Landau Coupe

# CAPRICE

You can spend more. The question is, why?

## BEST-SELLING FULL-SIZE MODEL IN THE NATION.

Which proves that there are still many people who need a full-size, six-passenger car. If you're one of that select group, look no further. Caprice offers you so much elegance, quality and room. All at a Chevrolet price, too. In fact, sheer value has kept Caprice a sales leader year after year. But don't just take our word for it. Stop in at your nearby Chevrolet dealership and take a test drive. You're in for some pleasant surprises.



## BY ANY MEASURE, IT MEASURES UP.

What's standard? What isn't? Look at what you could be enjoying in a Caprice: automatic transmission, power steering, acoustical headlining, headlight warning buzzer, cushioned body mounting system, full carpeting, electric clock, wheel opening moldings, full wheel covers and a compact spare tire. There's more, but you get the idea.



Caprice Classic Landau Coupe

## 58% BETTER GAS MILEAGE.

Surprised? Check the EPA figures. Compared with the EPA average estimated 12 MPG city for all domestic cars in its class in 1976, Caprice's 1981 EPA of 19 city MPG is an 58% improvement. Figure it out for yourself. That fact is impressive. The 1981 Caprice is available in Classic Sedan, Classic Coupe and Classic Landau Coupe models.

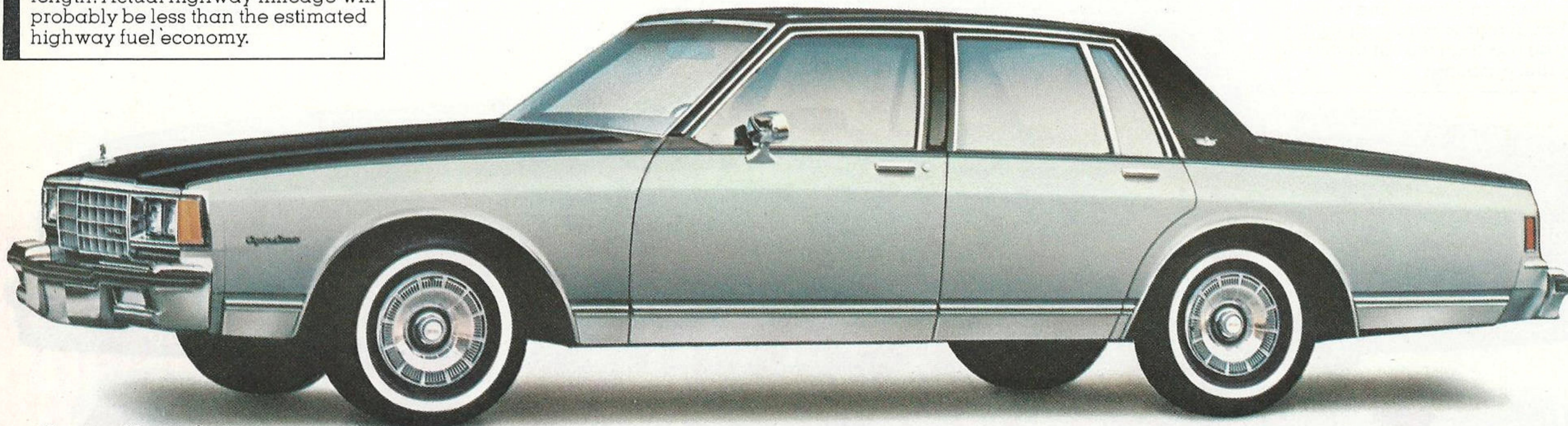
## YOU GET ALL THIS TECHNOLOGY AT A CHEVROLET PRICE.

- Computer Command Control
  - 3.8 Liter V6 engine
  - Automatic transmission with torque converter clutch
  - Automatic transmission with overdrive optional at extra cost with optional 5.0 Liter V8
  - Power steering
  - High Energy Ignition system
  - Delco Freedom II battery
  - Self-adjusting low-drag power front disc/rear drum brakes
  - Diagnostic connector
  - Aerodynamic styling
  - Long recommended service intervals
  - Anti-corrosion measures
- There's more. See your Chevrolet dealer for all the facts.

## MILEAGE ESTIMATES

**19** EPA EST. MPG **26** HWY. EST.

With standard engine and transmission. Remember: Compare the "estimated MPG" to the "estimated MPG" of other cars. You may get different mileage, depending on how fast you drive, weather conditions, and trip length. Actual highway mileage will probably be less than the estimated highway fuel economy.



8 Caprice Classic Sedan

# WAGONS

Chevrolet Wagon. America's best-selling full-size wagon.

Here's your opportunity to get great looks as well as over 87 cubic feet of cargo space. The 1981 Chevrolet wagons back up their full-size roominess with a full complement of style and comfort. And such features as a three-

way door-gate that opens wide to admit passengers using the optional third seat. To reach inside, all you do is lower the window. With the tailgate dropped down, it turns into an extension for easy loading. The load area is four feet wide for all those bulky whatever's. There's even a lockable storage compartment under the rear cargo floor for your

valuables. As well as a side lockable storage compartment and built-in utility trays. Optional Trailer Towing Packages permit towing up to 5,500 lbs. See your Chevrolet dealer for details. Good looks, good function, good value. Test drive a 1981 Caprice or Impala Wagon at your Chevrolet dealer.

## MILEAGE ESTIMATES

**21** EPA EST. MPG **33** HWY. EST.

With optional diesel engine and standard transmission. Remember: Compare the "estimated MPG" to the "estimated MPG" of other cars. You may get different mileage, depending on how fast you drive, weather conditions, and trip length. Actual highway mileage will probably be less than the estimated highway fuel economy.



Impala Station Wagon

## YOU GET ALL THIS TECHNOLOGY AT A CHEVROLET PRICE.

- Computer Command Control (gasoline engines only)
  - 4.4 Liter V8 engine
  - Automatic transmission with torque converter clutch
  - 5.7 Liter Diesel V8 available
  - Automatic transmission with overdrive at extra cost with optional 5.0 Liter V8
  - Diagnostic connector
  - High Energy Ignition system
  - Delco Freedom II battery
  - Self-adjusting low-drag power disc front/rear drum brakes
  - Aerodynamic styling
  - Anti-corrosion measures
  - Long recommended service intervals
- And even more features you'll like.

## Malibu Wagon. The lowest-priced six-passenger V6 wagon in America.

Here's a wagon that's easy to load and easy to like. For a mid-size, it's surprisingly roomy. It seats six friends or family

with all their cargo. Versatile, too. The back seat lowers with the lift of a handle for full cargo capacity. The hatchgate has two-way convenience: the window half swings up while the tailgate half swings down. And Malibu offers more combined passenger and cargo space

for the money (141 cu. ft.) than any other domestic or import mid-size wagon. Once that fact is known, the 1981 Malibu Wagon just may become America's best-selling mid-size station wagon. Optional Trailer Towing Packages permit towing up to 5,000 lbs.

## MILEAGE ESTIMATES

**19** EPA EST. MPG **26** HWY. EST.

With standard engine and optional automatic transmission. Remember: Compare the "estimated MPG" to the "estimated MPG" of other cars. You may get different mileage, depending on how fast you drive, weather conditions, and trip length. Actual highway mileage will probably be less than the estimated highway fuel economy.



Malibu Classic Wagon

## YOU GET ALL THIS TECHNOLOGY AT A CHEVROLET PRICE.

- Computer Command Control
  - 3.8 Liter V6 engine
  - High Energy Ignition system
  - Delco Freedom II battery
  - Self-adjusting power disc front/rear drum brakes
  - Aerodynamic styling
  - New tire technology
  - Long recommended service intervals
  - Anti-corrosion measures
- And that's just a partial list. Your Chevrolet dealer has full details.

# CAMARO

The Hugger. It just keeps getting better.

As beautiful as ever. With your kind of new features for 1981. Including standard power brakes, standard compact spare tire for more luggage room, as well as all the technological features we've listed. Still, Camaro remains one handsomely sporty car. Where you can sit in front bucket seats with a full complement of optional instrumentation before you, including tach. All that, and more, is what makes Camaro such a pleasure to drive. Test one yourself.

## ALL THIS SPORT AND EPA ESTIMATED 19 MPG.

Sure, Camaro is still an economy car. If you choose Sport Coupe or Berlinetta models, a 3.8 Liter V6 is yours. Choose Z28 and you get the 5.0 Liter V8 engine. And a console-mounted shifter comes with all models. Plus you get all the advantages of Chevrolet's '81 fuel-saving technology.

## NOTHING LIKE IT FOR THE PRICE.

The price is reasonable, the list of standards is more than reasonable. You get a floor console, four-spoke sport steering wheel, locking glove compartment, color-keyed cut-pile carpeting, color-keyed instrument panel, steering wheel and steering column, power steering, 21-gallon fuel tank for long range and much, much more. Plus a long list of available engine,

transmission, and sporty options. Camaro is available in Sport Coupe, Berlinetta and Z28 models.



## YOU GET ALL THIS TECHNOLOGY AT A CHEVROLET PRICE.

- Computer Command Control
  - 3.8 Liter V6 engine (except Z28)
  - 5.0 Liter V8 engine and 4-speed manual transmission (included with Z28 option)
  - Console-mounted transmission shifter
  - Front stabilizer bar
  - High Energy Ignition system
  - Delco Freedom II battery
  - Self-adjusting low-drag front disc/rear drum brakes
  - Aerodynamic styling
  - Long recommended service intervals
  - Anti-corrosion measures
- Of course, there's more. Ask your Chevrolet dealer.

## MILEAGE ESTIMATES

**19** EPA EST. MPG **26** HWY. EST.

With standard 3.8 Liter V6 engine and optional automatic transmission. Remember: Compare the "estimated MPG" to the "estimated MPG" of other cars. You may get different mileage, depending on how fast you drive, weather conditions, and trip length. Actual highway mileage will probably be less than the estimated highway fuel economy.



Camaro Sport Coupe

# WITH CHEVROLET'S NEW TECHNOLOGY, YOU CAN DRIVE THOUSANDS OF EXTRA MILES WITH THE SAME AMOUNT OF FUEL.

Take a 1981 Caprice for instance, with its 58% improvement in MPG over 1976 full-size cars. You could drive an '81 Caprice 23,700 miles for about the same fuel you would have used to go 15,000 miles in a '76 full-size car. That's an additional 8,700 miles with the same quantity of fuel. And you still get your kind of room, ride and comfort—at a Chevrolet price.

The chart on this page demonstrates similar impressive fuel economy improvement for other 1981 Chevrolet models. We've compared average EPA estimated MPG for all 1976 domestic cars against 1981 Chevrolets in the same size classifications. We chose 1976 figures as an example because

they show just how much Chevrolet fuel economy has improved in only five years.

And what improvements! Compare your present car size against the chart and see for yourself. Then think about how much you could save in fuel costs with a new 1981 Chevrolet.

Chevrolet has a lot going for it in 1981. New technology. Good fuel economy. Dependability, durability and value. But we want you to see for yourself. Visit your Chevrolet dealer. Get all the facts. Take a test drive. We think you'll be convinced that Chevrolet is your best buy for 1981.

## COMPARE CHEVROLET TO 1976 DOMESTIC CARS.

Find Your Car Size Here	1976 Average EPA Est. MPG for All Domestic Passenger Cars	1981 Chevrolets EPA Est. MPG*	Percent of Improvement	Extra Miles Per Year**
Full-size	12	Impala/Caprice 19	58%	8,700
Mid-size		Monte Carlo 19	36%	5,400
	14	Malibu 19	36%	5,400
		Citation 22	57%	8,550
Compact	16	Camaro 19	19%	2,850
Subcompact	20	Chevette 30	50%	7,500

## LONG RECOMMENDED SERVICE INTERVALS.

Now it's easier than ever to take good care of your car. Because our '81 Chevys need less routine service than just a few years ago. Our cars are built so you can spend more time enjoying driving. And save on some scheduled service to boot. Our 1981 service recommendations for nonturbocharged gasoline engines are shown at the right.†

Engine oil	12 months or 7,500 miles
Oil Filter	12 months or 7,500 miles; every 15,000 miles thereafter
Carburetor Air Filter	Up to 30,000 miles
Spark Plugs	30,000 miles
Chassis Lubrication	12 months or 7,500 miles
Auto. Trans. Fluid	Every 100,000 miles

†See your Owner's Manual for conditions requiring more frequent intervals.

## COMPARE CHEVROLET TO 1976 FOREIGN CARS.

Find Your Car Size Here	1976 Average EPA Est. MPG for All Foreign Passenger Cars	1981 Chevrolets EPA Est. MPG*	Percent of Improvement	Extra Miles Per Year**
Compact	15	Camaro 19	27%	4,050
Subcompact	21	Chevette 30	43%	6,450

\*Mileage: With standard engine and transmission (Malibu and Camaro with optional automatic transmission). Remember: Compare these estimates to the "estimated MPG" of other cars. You may get different mileage, depending on how fast you drive, weather conditions, and trip length.

\*\*Based on a driving average of 15,000 miles per year.

The Chevrolets shown in this brochure are equipped with GM-built engines produced by various divisions. See your dealer for details.

Some of the equipment shown or described throughout this brochure is available at extra cost. Your dealer has details and, before ordering, you should ask him to bring you up to date.



PLACE  
STAMP  
HERE

**TUNE IN TO WHAT'S NEW.**

