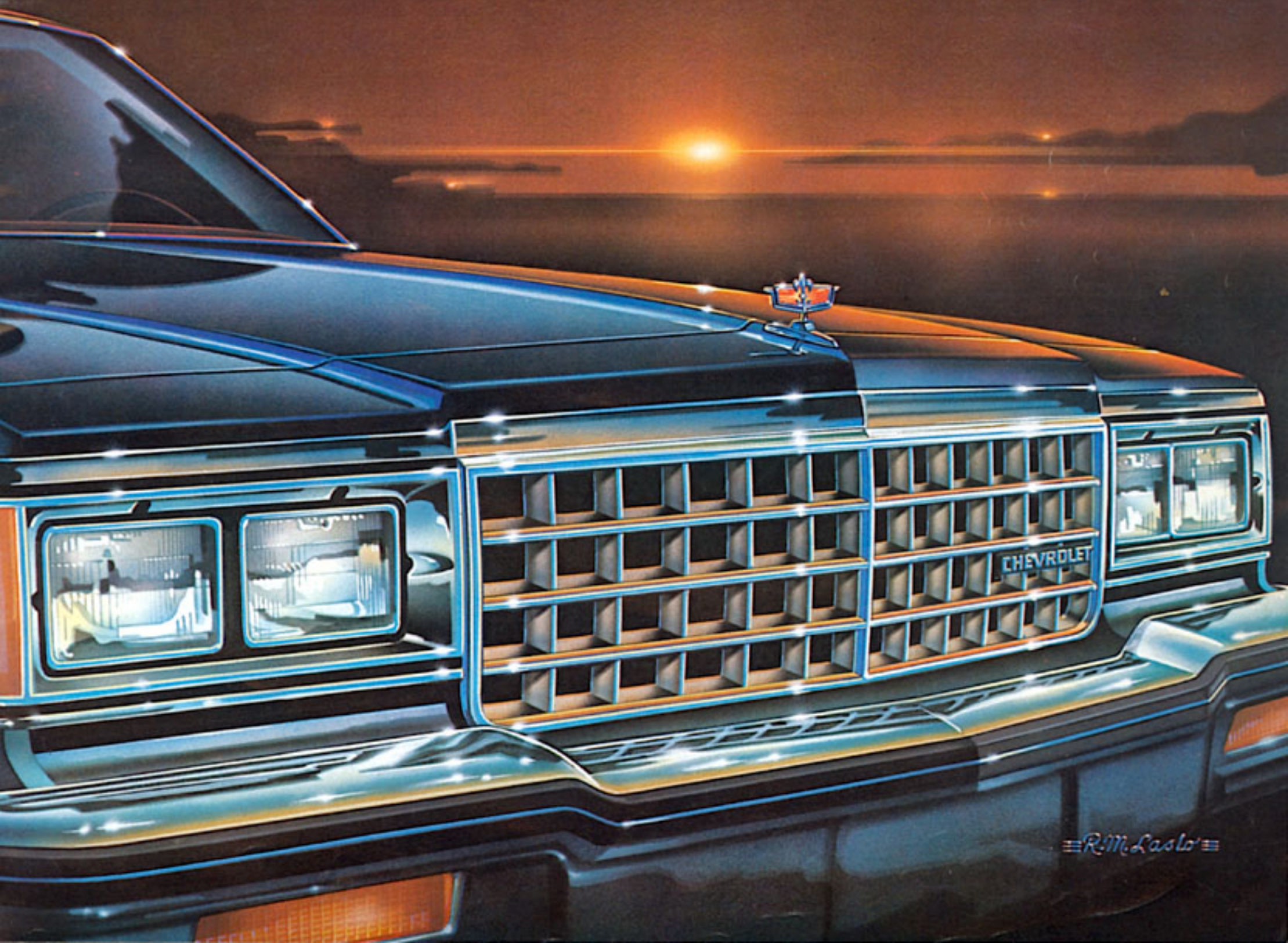


1981 CAPRICE CLASSIC & IMPALA

Sedan, Coupe and Wagon



≡ R. M. Lasko ≡

YOU CAN SPEND MORE. THE QUESTION IS, WHY?

You have a need to be comfortable. But a wish to be sensible.

You want elegance. But with relevance.

The times demand it. And Caprice Classic for 1981 delivers it.

Look at this car. It speaks of success. But not of excess.

It is at once both lean and luxurious, yet relevant to today in both features and cost.

Examine it with an eye on technology. You'll discover the new Computer Command Control, an actual computer that monitors engine functions.

You'll also find technological efficiency* in Caprice Classic's Easy-Roll radial ply tires, its new low-drag front disc brakes, standard V6 engine, even its beautiful aerodynamic design.

And to guard your dollar even more jealously, Caprice gives you lengthy recommended service intervals, a High Energy Ignition system that helps extend spark plug life, and a built-in engine diagnostic connector so your engine electrical system can be monitored at a glance by a Chevrolet serviceman.

But to gain the full measure of appreciation for today's Caprice, behind the wheel is where you belong. Feel the crisp maneuverability in heavy city traffic. Feel the rich new textures of fine velour upholsterings.

Feel the smooth, undaunted ride and the thickly cushioned comfort only foam-molded seating can bring.

Then consider price...and you may find yourself reaching an inescapable conclusion.

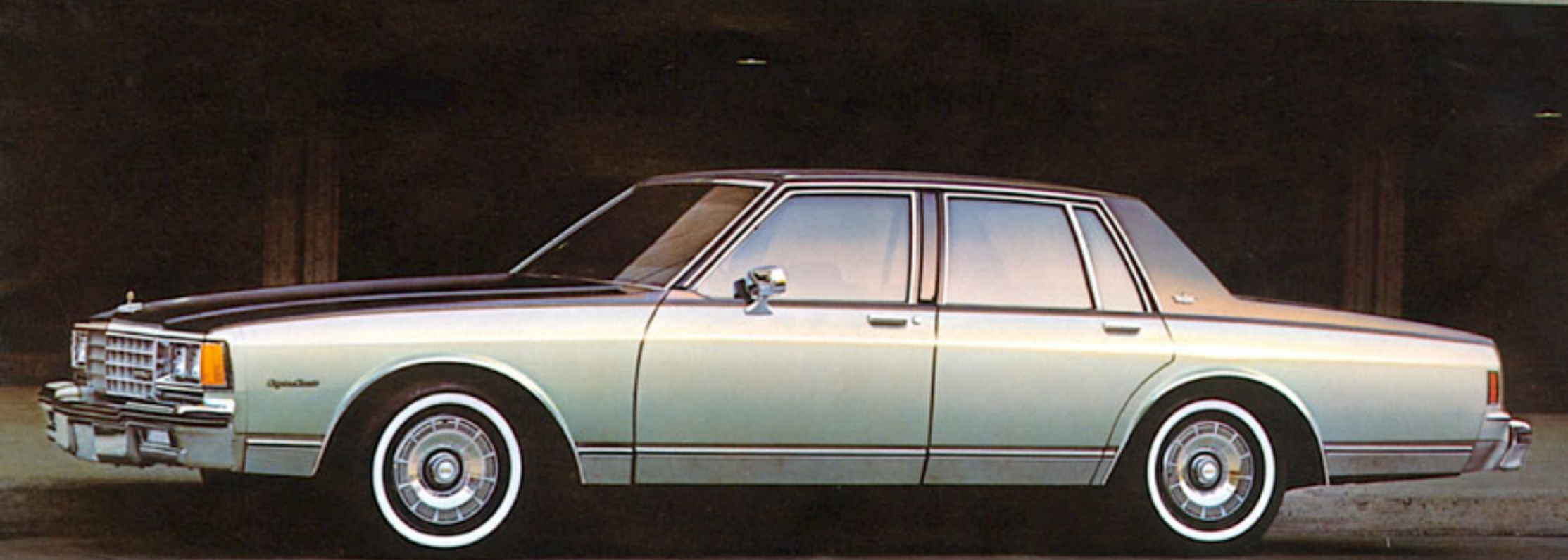
You can spend more, and maybe get less than Caprice elegance.

The question is, why?

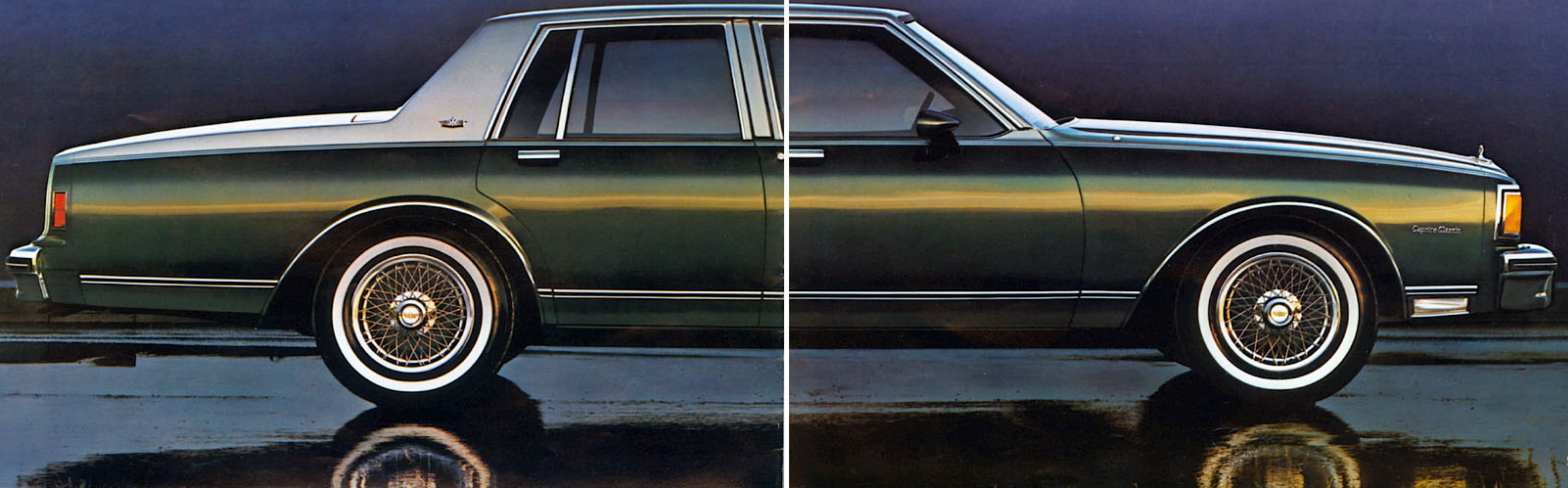
*For Chevrolet EPA estimated mileage, check the wall poster displayed at your Chevrolet dealer's showroom, or ask for an EPA mileage sheet to take home with you.

A WORD ABOUT THIS CATALOG: We have tried to make this catalog as comprehensive and factual as possible and we hope you find it helpful. However, since the time of printing, some of the information you will find here may have been updated. Also, some of the equipment shown or described throughout this catalog is available at extra cost. Your dealer has details and, before ordering, you should ask him to bring you up to date.

The right is reserved to make changes at any time, without notice, in prices, colors, materials, equipment, specifications and models. Check with your Chevrolet dealer for complete information.



Caprice Classic Sedan.



Everything you never expected in a Chevrolet.





Caprice Classic optional Special Custom interior.





Impala Sport Coupe.



Impala Station Wagon.

IMPALA

Meet the 1981 Chevrolet Impala. For 23 years it's been offering full-size value to car buyers. And this year is no exception.

As our lowest-priced full-size car, Impala features a trim size that seats six comfortably. And its roomy 20.9-cu.-ft. trunk is the same as Caprice Classic... the biggest of any Chevy.

What's more, Impala treats you to some very desirable standard features. Power steering. Power front disc brakes. Automatic transmission. An efficient V6 engine on sedans and coupes, a V8 on wagons. Or you may like the added power of the optional 5.0 Liter V8 and new automatic transmission with overdrive designed to help highway fuel economy.

Look forward to Easy-Roll steel-belted radial ply tires, a newly improved, maintenance-free Freedom II battery, along with more anti-corrosion protection than ever before.

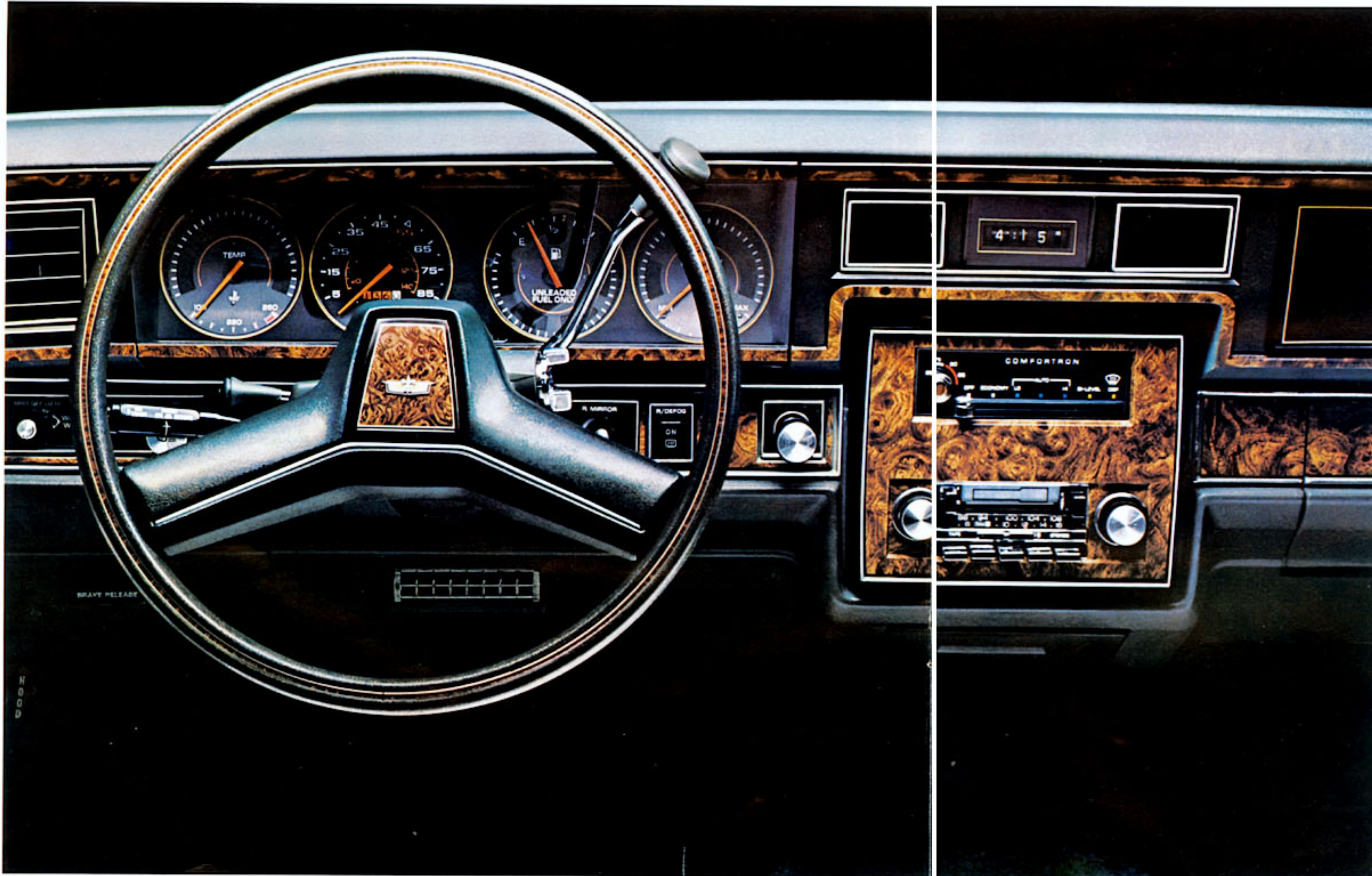
There's also cushiony cut-pile carpeting in the roomy interior. And an exterior color selection to suit every taste—14 solids, nine Custom Two-Tone combinations and seven vinyl top colors.

Some Impala value can be felt but not seen. Its smooth ride stems, in part, from a full-perimeter frame with 16 cushioned body mounts. And an absorbent, computer-selected coil spring at each wheel adds to the comfort.

Impala. Sedan, coupe or wagon, it's been an American family favorite for 23 years.

Going on 24.

Inside, an air of well-being and comfort.



Caprice Classic instrument panel.



Caprice Classic Sedan interior with standard bench seat.

Impala interior with standard bench seat.



With The New Chevrolet for 1981, restrained elegance prevails.

It looks expensive. Without being immoderate.

It pampers you. Yet not to excess.

Giving generous testimony to this are carefully proportioned seats with rich fabric coverings that invite you to relax. And so you can with plenty of room for the legs, heads and shoulders of six adults.

The entire interior, right down

to seat and shoulder belts, is color coordinated. And the instrument panel, functional as it is, is also remarkably attractive.

Road noise has been softened by a one-piece cloth-and-polyfoam headliner on the ceiling and by thick, one-piece carpeting on the floor.

Creating a beautiful world of driving is the aim of the 1981 Caprice and Impala. And they succeed admirably.

Standard Features.



COMPUTER COMMAND CONTROL

Every 1981 gasoline-engined Chevrolet passenger car includes a sophisticated, thoroughly tested on-board computer as standard equipment. It gives you the cleanest-burning gasoline engines in Chevrolet's history. And points the way to impressive fuel economy.

That's just the beginning of the benefits. By continuously monitoring your engine's functions, Computer Command Control adjusts the performance of your car under all operating conditions—continuously—as you drive. Air-fuel mixtures are constantly adjusted to driving conditions, and the system compensates for altitude, barometric pressure and temperature changes. And, when compared to last year, the system actually reduces the number of recommended maintenance operations.

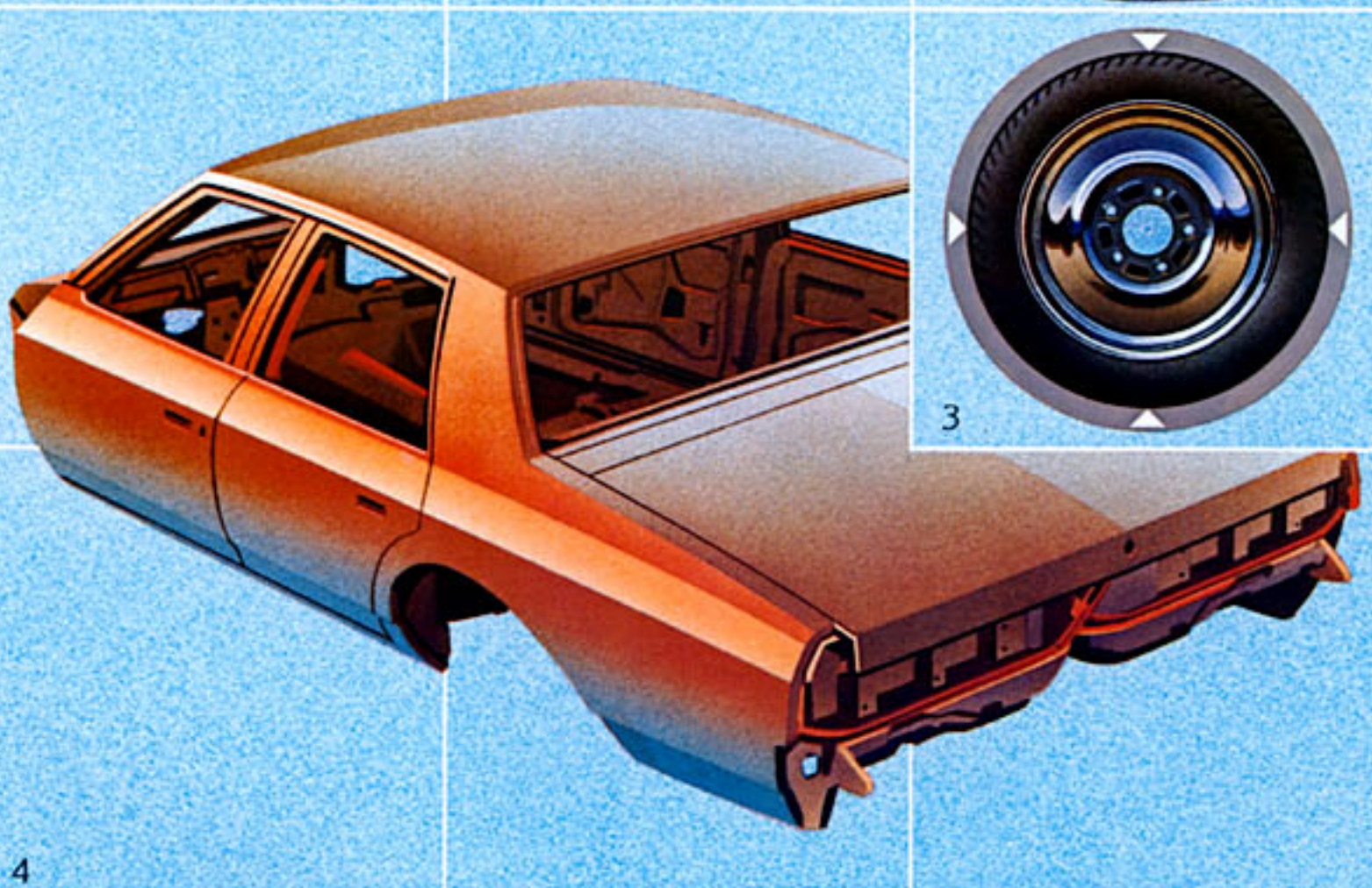
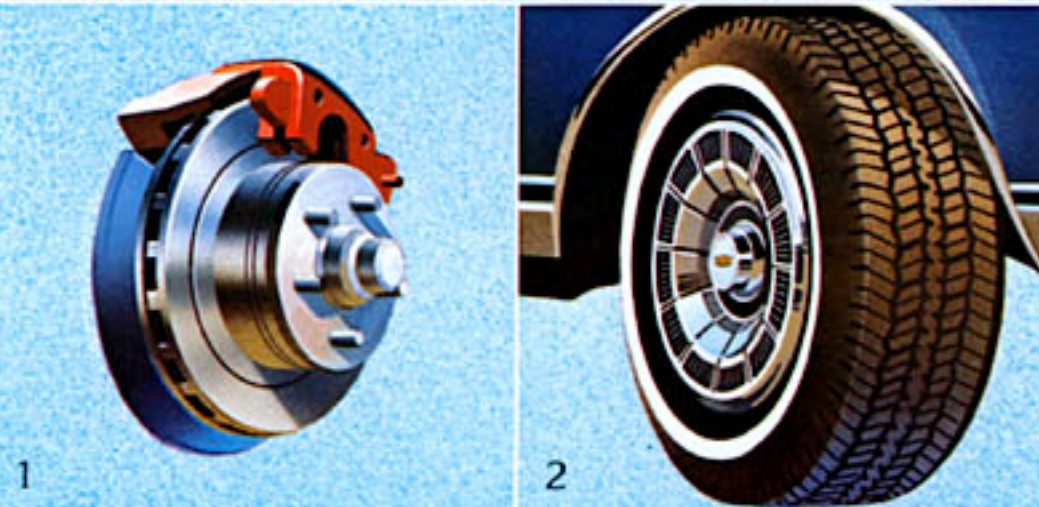
We believe that the Computer Command Control will enable the Chevrolet Motor Division to achieve the highest average fuel economy in its history* and, at the same time, reduce exhaust emissions to the lowest level in Chevrolet history.

Computer Command Control is also self-diagnostic. In fact, should a malfunction occur, the system will help diagnose it and pinpoint the problem for your Chevrolet service technician. Another benefit of Computer Command Control is that it is covered by the 5-year/50,000-mile emission system warranty. Ask your dealer for details.

*This is a measure of Chevrolet Motor Division's fuel economy based on a projected sales-weighted average of the EPA's combined mileage estimates for all Chevrolet passenger cars produced during this model year.

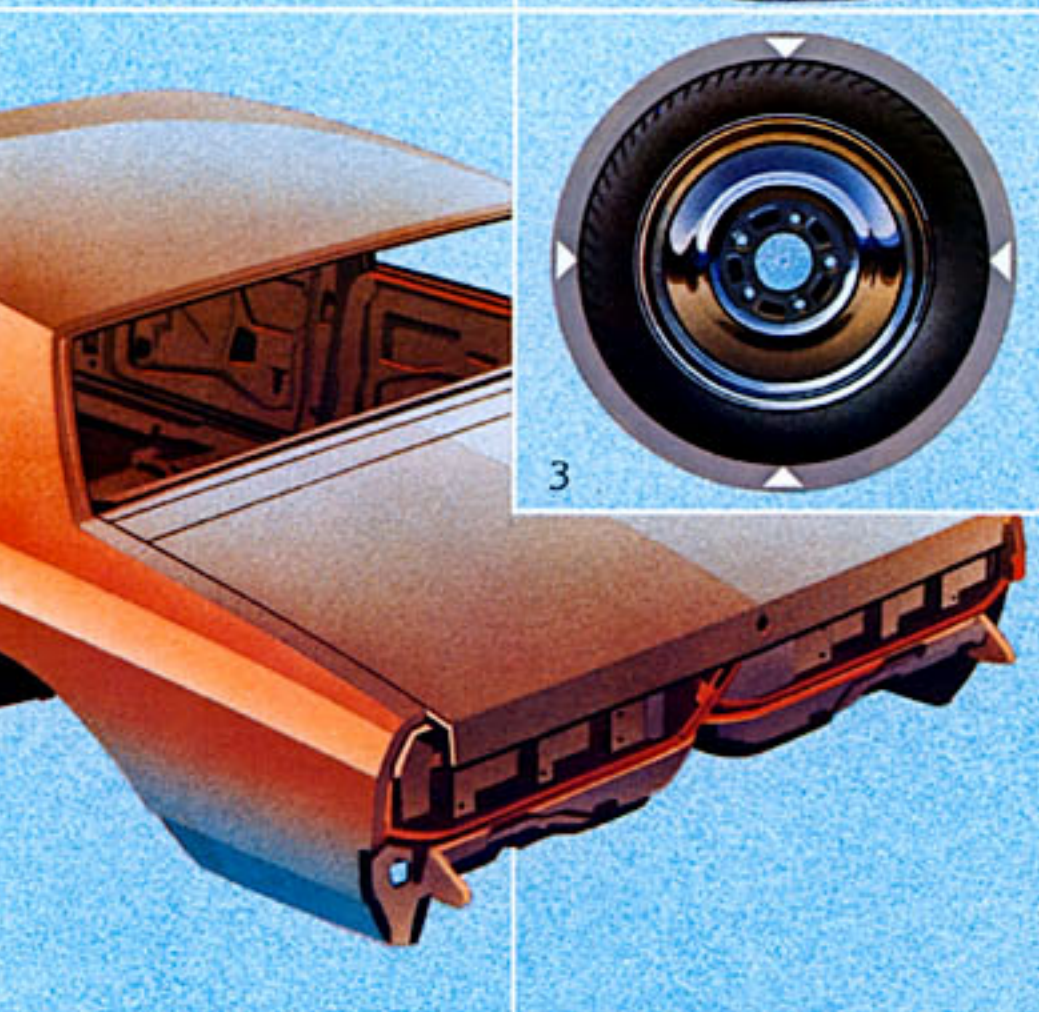
1. Power front disc/rear drum brake system. Redesigned front disc brakes result in less drag and so contribute to fuel economy; includes translucent plastic master cylinder reservoir for visual checks of fluid level without removing cover. Fade-resistant front brakes have audible wear sensors.

2. Easy-Roll tires. GM-Specification steel-belted radial ply tires carry high pressure, use advanced tread compounding compared to conventional-type radials. Up to 20% less rolling resistance contributes to fuel economy.



3. Compact spare tire. This lightweight, easy-to-handle space-saver, with 16-inch-diameter wheel, is standard on all 1981 Caprice and Impala models.

4. Improved anti-corrosion measures. In addition to all the previous anti-corrosion treatments used on Caprice and Impala, more protection than ever results from submersion of body in a new, durable primer paint; submersion of frame assembly in new hot melt wax. Plus quality paint which is used on many engine compartment components.



5. Built-in engine electrical diagnostic connector. Simplifies engine electrical tests. When plugged into analyzer, 25 electrical tests and checks can be made quickly, accurately. Also analyzes car's starting supply voltage, charging and battery systems.

Automatic transmission. Features torque converter clutch which provides a direct mechanical connection through the transmission for more efficient use of power when operating in "drive" range.

Power steering. Helps ease parking and driving in the city.

CHEVROLET POWER TEAMS

Engine	Ordering Code	Displacement (cu. in.)	Sedans and Coupes	Station Wagons	Automatic Transmission	Automatic Transmission w/Overdrive
All States Except California						
3.8 Liter 2-Bbl. V6 (A)	LC3	229	Std.	NA	Std.	NA
4.4 Liter 2-Bbl. V8 (B)	L39	267	EC	Std.	Std.	NA
5.0 Liter 4-Bbl. V8 (B)	LG4	305	EC	EC	NA	EC
5.7 Liter Diesel V8 (C)	LF9	350	NA	EC	Std.	NA
California Only (With California Emission Requirements)						
3.8 Liter 2-Bbl. V6 (D)	LD5	231	Std.	NA	Std.	NA
5.0 Liter 4-Bbl. V8 (B)	LG4	305	EC	EC	NA	EC
5.7 Liter Diesel V8 (C)	LF9	350	NA	EC	Std.	NA

Std.—Standard. NA—Not Available. EC—Optional at Extra Cost.
 PRODUCED BY GM:
 (A) CHEVROLET MOTOR DIVISION (C) OLDSMOBILE MOTOR DIVISION
 (B) CHEVROLET MOTOR DIVISION (D) BUICK MOTOR DIVISION
 and GM OF CANADA.

DIMENSIONS (In Inches)

Exterior	Sedan	Coupe
Wheelbase	116.0	116.0
Length (overall)	212.1	212.1
Width (overall)	75.3	75.3
Height (loaded)	55.2	54.6
Fuel Tank Capacity	25 gal.	25 gal.
Interior		
Head Room—Front	39.5/39.2*	38.8/38.5*
Head Room—Rear	38.2/38.0*	38.2/38.0*
Leg Room—Front	42.2	42.2
Leg Room—Rear	39.1	38.3
Hip Room—Front	55.0	55.0
Hip Room—Rear	55.3	57.9/57.6*
Shoulder Room—Front	60.5/60.9*	60.4/60.9*
Shoulder Room—Rear	60.5/60.9*	59.2/58.7*
Usable Luggage Capacity	20.9 cu. ft.	20.9 cu. ft.

*Caprice models.
 For wagon dimensions, see page 18.

LONG RECOMMENDED SERVICE INTERVALS*

Engine Oil	12 months or 7,500 miles**
Oil-Filter	12 months or 7,500 miles, or every 15,000 miles thereafter**
Spark Plugs†	30,000 miles
Chassis Lubrication	12 months or 7,500 miles
Automatic Transmission Fluid Change	Every 100,000 miles

*See Owner's Manual for conditions requiring more frequent intervals.
 **5,000 miles with diesel. †Except diesel engine.

Full Coil suspension. Coil springs are computer-selected for specific model and equipment. Includes front stabilizer bar.

Acoustical headlining. Thick polyfoam sound-deadening material is sandwiched between fabric and hardboard backing to help reduce road noise.

Column-mounted lever for turn signal and headlight dimmer. Puts headlight dimmer at your fingertips along with turn signal.

Cushioned body mounting system. Helps isolate passenger area from road noise and vibration.

MORE STANDARD FEATURES.

Sedans, Coupes and Wagons: Delco-tron generator with built-in solid-state regulator • New-type catalytic converter • Coolant recovery system • Dual-mode flow-through ventilation system • Color-keyed seat and shoulder belts • Convenient single-loop front seat belt system with door-actuated retractors • Color-keyed steering column and steering wheel • Molded full foam seat construction • One-piece carpeting • Glove compartment lock and light • Inside hood release for added underhood security • Foot-

operated parking brake • Cigarette lighter • Built-in heater/de-froster system • Luggage compartment light • Removable taillight rear-end panel • Day/night inside rearview mirror • Cushioned body mounting system to help isolate passenger area from road noise and vibration • Inner fenders, front and rear, for corrosion protection • Steel bumpers reinforced with high-strength aluminum • Sturdy all-welded perimeter frame • Double-panel door, hood, deck lid or tailgate construction.

Caprice Only: Electric clock • Headlight reminder chimes • Wheel opening moldings • Quiet Sound Group • Full wheel covers • Door pull straps on front doors. Fold-down armrest (sedans and wagons) • Illuminated ashtray • Standup hood ornament • Dual horns.

Caprice Classic Landau: Vinyl cover on front portion of roof • Sport mirrors, LH remote, RH manual • Wire wheel covers.

FOR EASY MAINTENANCE.

Delco Freedom II battery. Improved new design over the original Freedom battery. Never needs re-filling; sealed side terminals help resist corrosion. Provides more efficient starting power than in the past and is better able to withstand road shock and vibration.

High Energy Ignition. A solid-state system that eliminates points and ignition condenser, yet delivers a high voltage spark that helps extend time between recommended tune-ups.

Side-lift frame jack. Lifts by the frame, not bumper. Compact size, hand or foot operated.

Engine Selections.

3.8 Liter V6. An engine to suit the times, this 229-cu.-in. V6 with 2-barrel carburetor is lightweight, compact and responsive, with impressive fuel economy and good performance. Has Dualjet carburetor, plus engine block and crankshaft with cast-iron construction. Compression ratio and cylinder diameters, as well as inlet and exhaust valves, are identical to those in the 5.0 Liter V8. Standard in 49 states. A slightly larger 3.8 Liter V6 engine with 231-cu.-in. displacement is standard in California.

4.4 Liter V8. Get smooth V8 performance, added power for the highway, plus impressive fuel economy from this engine with cast-iron cylinder block.

Includes short-stroke valve-in-head design and Dualjet carburetor which help engine perform well at all speed ranges. Standard on wagons, optional on sedans and coupes. Not available in California.

5.0 Liter V8. An optional engine that gives added V8 performance for driving on highways and hills; can handle big loads or trailer towing. Has short-stroke valve-in-head design with 4-barrel carburetor to provide increased power output and help supply good engine performance at all speed ranges. Available only with optional new automatic transmission with overdrive fourth gear designed to help highway fuel economy.

5.7 Liter Diesel V8. An optional engine for wagons that gives smooth performance and the fuel economy you would associate with a compact car. No spark plugs, distributor or carburetor to service or replace. Meets current emission standards without a catalytic converter. Maintenance is similar to other V8s except for changing oil and filter every 5,000 miles.

SAFETY FEATURES.

Occupant Protection. Manual lap belts with push-button buckles for rear and center front passenger positions • Manual lap/shoulder belts for driver (with reminder light and buzzer; chimes on Caprice models) and right front passenger • Energy-absorbing steering column • Passenger guard door locks • Safety door latches and stamped steel hinges • Folding seat back latches • Energy-absorbing padded instrument panel and front seat back tops • Laminated windshield/tempered side and rear glass • Safety armrests • Identification symbols for controls and displays.

Accident Avoidance. Side marker lights and reflectors • Parking lamps that illuminate with headlamps • Four-way hazard warning flasher • Backup lights • Lane-change feature in direction signal control • Windshield defrosters, washer and dual-speed wipers • Vinyl-edged inside mirror • Outside rearview mirror • Dual master cylinder brake system with warning light • Starter safety switch • Dual-action safety hood latches.

Anti-Theft. Anti-theft ignition key reminder buzzer (chimes on Caprice models) • Anti-theft steering column lock.

Options — Sedans, Coupes and Wagons.



1. Power trunk opener. Just touch the release button inside the glove box and trunk lid opens. **2. Rear window defogger.** Electric grid-type (shown) helps keep rear window clear of mist and ice. Blower-type defogger also available for sedans and coupes. **3. Power seat control.** Electric 6-way control of entire front seat or driver's seat only if ordered with 50/50 seats. **4. Power Sky Roof.** Touch a button and it opens, letting in sunlight, moonlight, outside air. Reduces front seat head room slightly. (Sedans and coupes.) **5. Power windows.** Raise or lower door windows at a touch of a button. **6. Cornering lights.** Help improve visibility

while turning. Mounted on front fenders, lamps are activated by turn signal. **7. Intermittent windshield wiper system.** Lets you vary the frequency of wiper cycles to match weather, from light mist to down-pour. **8. Power door locks.** Lock and unlock doors with master control on both front doors. **9. Halogen Hi-Beam Headlamps.** Noticeably increase nighttime visibility on hi-beam without increasing electric consumption. **10. Comfortron air conditioning.** Automatically maintains preset temperature, summer and winter. Manual control air conditioning also available. **Sound systems.** Built to GM-Delco quality standards. Choose from AM radio,

AM/FM radio, AM/FM stereo radio, AM/FM stereo with 8-track stereo tape or stereo cassette tape, or AM/FM stereo Citizens Band radio with power antenna. All radios include new dual front speakers. Stereo systems also include dual rear speakers. Windshield antenna included with factory-installed radios. **11. New automatic transmission with overdrive.** Overdrive fourth gear helps highway fuel economy. Higher numerical axle ratio improves performance at low and intermediate speeds. Also equipped with a converter clutch designed to improve fuel economy in third and fourth gears. See Power Teams chart for availability. **12. Auto-**

matic speed control with new "resume speed" feature. Automatically maintains a constant speed without touching accelerator. New "resume speed" feature lets driver slow up, then accelerate again to preset speed without resetting. **13. New locking option for wire wheel covers.** New locking device for optional simulated wire wheel covers has bracket that locks wheel cover to hub area. Can be removed only by using special tool to loosen bolt fastener (Caprice). **14. Comfortilt steering wheel.** Adjusts to six different positions for most comfortable driving angle and for easier entry and exiting by driver.

OTHER OPTIONS.

For sedans, coupes, wagons:

□ Electric clock (Impala) □ Digital clock □ 50/50 reclining passenger seat (Caprice) □ Special Custom interior (Caprice)† □ Bumper rub strips □ Bumper guards □ Auxiliary lighting □ Deluxe luggage compartment trim† □ Gage package, includes temperature and fuel economy gages plus trip odometer □ Quiet Sound Group (Impala) □ Color-keyed floor mats, front only □ Color-keyed floor mats, rear only □ Cornering lights □ Limited slip differential □ Heavy-duty cooling □ 70-amp Delcotron generator □ Dual horns (Impala) □ Power trunk opener† □ Value Appearance Group (Impala) □ Heavy-duty battery □ Tinted glass, all windows □ Body pin striping* □ Vinyl roof cover*† **Moldings:** □ Body side moldings □ Door edge guards □ Wheel opening moldings (Impala) **Sound Equipment:** □ Rear seat speaker □ Dual rear speakers □ Power antenna **Wheel Covers:** □ Full wheel covers (Impala) □ Sport wheel covers □ Custom wheel covers □ Wire wheel covers (Caprice)* **Special Suspensions:** □ Sport suspension† □ Heavy-duty suspension □ Inflatable rear shock absorbers **Tires†:** □ P225/70R-15 steel-belted radial ply white-wall (requires F41 suspension) □ P205/75R-15 steel-belted radial ply white-wall □ P215/75R-15 steel-belted radial ply white-wall **Mirrors:** □ Remote-control outside rearview, LH □ Remote-control outside rearview, LH and RH □ Twin remote Sport □ Sport, LH remote and RH manual* □ RH visor □ Illuminated RH visor **Paint:** □ Two-Tone □ Custom Two-Tone.

*Standard on Caprice Landau.

†Sedans and coupes only.



Offers service protection in addition to that provided by GM's new vehicle limited warranty. Ask your dealer about it. Coverage available only in the U.S.A. and Canada for the 1981 model year.

Exclusive wagon options are listed on page 19.



INTERIOR COLORS

CAPRICE CLASSIC SEDANS/COUPES

		Beige	Dk. Blue	Camel	Champagne	Jade	Maroon
Standard front bench seat and optional 50/50 split front seat	Cloth (Standard)		X	X	X	X	X
	Vinyl (Optional)		X	X			X
Optional Special Custom interior with 50/50 split front seat	Special Custom Cloth	X	X			X	X

CAPRICE CLASSIC WAGONS

		Beige	Dk. Blue	Camel	Champagne	Jade	Maroon
Standard front bench seat and optional 50/50 split front seat	Cloth (Standard)		X	X		X	
	Vinyl (Optional)		X	X			X

IMPALA SEDANS/COUPES

		Beige	Dk. Blue	Camel	Champagne	Jade	Maroon
Standard front bench seat	Cloth (Standard)		X	X		X	X
	Vinyl (Optional)		X	X	X	X	X

IMPALA WAGONS

		Beige	Dk. Blue	Camel	Champagne	Jade	Maroon
Standard front bench seat	Cloth (Standard)			X			X
	Vinyl (Optional)		X	X	X	X	X

EXTERIOR COLORS

		Beige	Dk. Blue	Camel	Champagne	Jade	Maroon
	Beige	X	X†	X			X
	Black	X		X	X	X	X
	Blue, Dark (Metallic)	X	X	X			
	Blue, Light (Metallic)		X				
	Brown, Light (Metallic)	X		X			
	Brown, Medium (Metallic)	X		X			
	Champagne (Metallic)	X		X	X		
	Cream			X	X		
	Green, Light Jade (Metallic)					X	
	Green, Jade (Metallic)	X		X		X	
	Maroon, Light (Metallic)	X		X			X
	Maroon (Metallic)	X		X			X
	Silver (Metallic)		X			X†	X
	White	X	X	X	X	X	X

CUSTOM TWO-TONE COLORS AVAILABLE: ††

Int. colors: Beige or Camel	Int. color: Dk. Blue	Int. color: Jade	Int. colors: Beige, Dk. Blue or Camel	Int. colors: Beige or Camel	Int. color: Champagne	Int. color: Champagne	Int. color: Beige, Camel, or Jade	Int. colors: Beige, Camel, or Maroon

Vinyl roof colors available: Black, white, dark blue, light jade green, maroon, beige and champagne. Check your dealer for details on the conventional Two-Tone combinations available and for complete information on vinyl roof availability.

† Not available with conventional Two-Tone combinations.

†† Not available on Caprice Landau. * Metallic.



Caprice Classic Station Wagon with optional Estate equipment.

Wagon Features.

Function and beauty—the two prove exceptionally compatible in the 1981 Caprice Classic and Impala Wagons.

With full-size roominess geared toward families or packages, they offer the special features shown here that underscore their usefulness. Yet a trim, contemporary design grants them special appeal, an added dimension.

Decide on a luxurious Caprice or value-oriented Impala and you've a deluge of other advantages. The new Computer Command Control emission and fuel control system for gasoline engines. An easy-maneuvering 116-inch wheelbase, standard V8 engine, computer-selected Full Coil suspension, and more. Much more.

Plus options like the diesel engine or new automatic transmission with overdrive when you order an optional 5.0 Liter V8.

The 1981 Chevrolet Caprice and Impala Wagons. Clearly they know what's wanted in wagons. And deliver it in style.

DIMENSIONS (in Inches)

Exterior	Wagon
Wheelbase	116.0
Length (overall)	215.1
Width (overall)	79.3
Height (loaded)	57.1
Fuel Tank Capacity	22 gal.
Interior	
Head Room—Front	39.6
Head Room—Rear	39.3
Leg Room—Front	42.2
Leg Room—Rear	37.8
Hip Room—Front	55.1
Hip Room—Rear	55.0
Shoulder Room—Front	60.5/60.9†
Shoulder Room—Rear	60.5/60.9†
Floor Length—Front Seat to Tailgate (closed)	90.2
Width Between Wheelhousings	48.2
Total Cargo Vol. (cu. ft.)	87.2/87.9†

†Caprice

For wagon power teams, recommended service intervals and still more standard features, see pages 12-13. Wagon interior and exterior colors shown on page 15.



Lockable underfloor storage. Tuck valuables away under lock and key in this roomy compartment below the rear cargo floor. Measures 8 cu. ft. in two-seat models, 4.5 cu. ft. with optional third seat.



Lockable storage area and utility trays. Keep small items out of sight in the locking compartment at the left rear of cargo area. Along the sides you'll even find built-in utility trays.



Fingertip-lowering of seat. Push a button-type latch and the second seat moves easily to the closed position. Another fingertip control in right rear trim area lets you lower optional third seat.

MORE STANDARD FEATURES. Power tailgate window • Vinyl-coated textured metal cargo area • Compact spare tire stores vertically in right rear trim panel with assist strap for easy removal.



Impala Wagon



Room for loading. Good-sized opening simplifies packing up the cargo area—measures 28.7 in. high by 48.2 in. wide. Over 4 ft. between wheelhousings and 7.5 ft. of floor length with rear seat down.



Over 87-cu.-ft. capacity. Generously scaled load area absorbs a remarkable number of bulky things or vacation luggage. With the rear seat down, it can handle up to 87 cu. ft. of cargo.



Three-way doorgate. Swings wide for passengers using optional third seat. To reach inside, just lower window. For loading, lower window and drop tailgate which then turns into load-floor extension.



Diesel engine. Gives good fuel economy plus smooth performance. No spark plugs, distributor or carburetor to service or replace. (Requires optional air conditioning and engine block heater plus Quiet Sound Group on Impala.)



Power tailgate lock. Lock or unlock tailgate from inside wagon. A great convenience in bad weather or for dropping off of third-seat passengers.

Estate equipment. Adds a sporty touch with wood-grain-look vinyl on body side and tailgate panels, outlined with bright moldings for accent. (For Caprice—shown on pages 16 and 17.)

Deluxe cargo area carpeting. Creates a luxury look with carpeting that matches passenger area on load floor, side panels and tailgate.

P225/75R-15 steel-belted radial ply white-wall tires. Give your wagon a finished, classic look. These are the same Easy-Roll tires with reduced rolling resistance as standard station wagon tires.

Body side moldings. Have wood-grain insert for Caprice Estate Wagons. Body side moldings for other wagon models are color-keyed to exterior/interior colors.



Roof carrier. Ideal for family vacations; when the interior is full you can put excess luggage on the handy roof carrier. Comes with front and rear rails that are easily adjustable, also includes an integral air deflector.



Inflatable rear shock absorbers. Add compressed air to rear shocks when carrying a heavy load to help level the vehicle. (Also available for sedans and coupes.)



Trailer hitch. Tows a maximum of 2,500 to 5,500 lbs. with a maximum tongue load of 200 to 650 lbs. (Dealer-installed accessory also available for sedans and coupes with V8 engine.)

Custom Two-Tone paint. Also available for wagons. See color selection on page 15.

Still more wagon options may be found on pages 14-15.

A Word About Engines.

Chevrolets are equipped with GM-built engines produced by various divisions. Please refer to the Chevrolet Power Teams chart on page 13 or see your dealer for details.

A Word About Assembly, Components and Optional Equipment in These Chevrolets.

The Chevrolets described in this catalog are assembled at facilities of General Motors Corporation operated by the GM Assembly Division or GM of Canada. These vehicles incorporate thousands of different components produced by various divisions of General Motors and by various suppliers to General Motors. From time to time during the manufacturing process, it may be necessary, in order to meet public demand for particular vehicles or equipment, or to meet federally mandated emissions, safety and fuel economy requirements, or for other reasons, to produce Chevrolet products with different components or differently sourced components than initially scheduled. All such components have been approved for use in Chevrolet products and will provide the quality performance associated with the Chevrolet name.

With respect to extra cost optional equipment, make certain you specify the type of equipment you desire on your vehicle when ordering it from your dealer. Some options may be unavailable when your car is built. Your dealer receives advice regarding current availability of options. You may ask the dealer for this information. GM also requests the dealer to advise you if an option you ordered is unavailable. We suggest that you verify that your car includes optional equipment you ordered or, if there are changes, that they are acceptable to you.

Caprice Classic Landau Coupe.



August, 1980

Handwritten signature
AUTOMOBILFORRETNING
KRISTIANSAND S.

Litho in U.S.A. 3970