

19 CHEVETTE 82



WIELAND

 Chevrolet

NOW CHEVETTE OFFERS A DIESEL UNDER THE HOOD, FIVE-ON-THE-FLOOR, AND NEW FUN IN THE DRIVING.

DIESEL

Diesel Chevette is our newest version of a good thing getting even better. Here's a small car that helps you handle the highway with a five-speed overdrive transmission — and a diesel engine.

That diesel engine is a small powerhouse that provides a 22.0 to 1 compression ratio. This environment encourages injected fuel to ignite spontaneously. It burns more effectively, giving you more power than that derived from the same amount of gasoline.



Since ignition system parts are not needed, there are no spark plugs to change, no distributor to replace, no carburetor to adjust.

Choose Diesel Chevette in either a 4-door or 2-door hatchback version. Naturally, each includes a long list of standard features. Plus a large selection of available options.

For 1982, Chevette maintains its vitality — while moving on to even better things.

Our standard Chevette Coupe or Sedan is a good example. This year the 1.6 Liter engine incorporates a new swirl fuel induction system to improve overall drivability.

In addition, you can now choose an optional five-speed overdrive transmission. It's one special way to combine fun with practicality for the open road.

Want a Chevette that's ready for action at an even more ready-to-buy price? Then Chevette Scooter may be your answer. It's available now in a convenient 4-door hatchback as well as the traditional 2-door model.

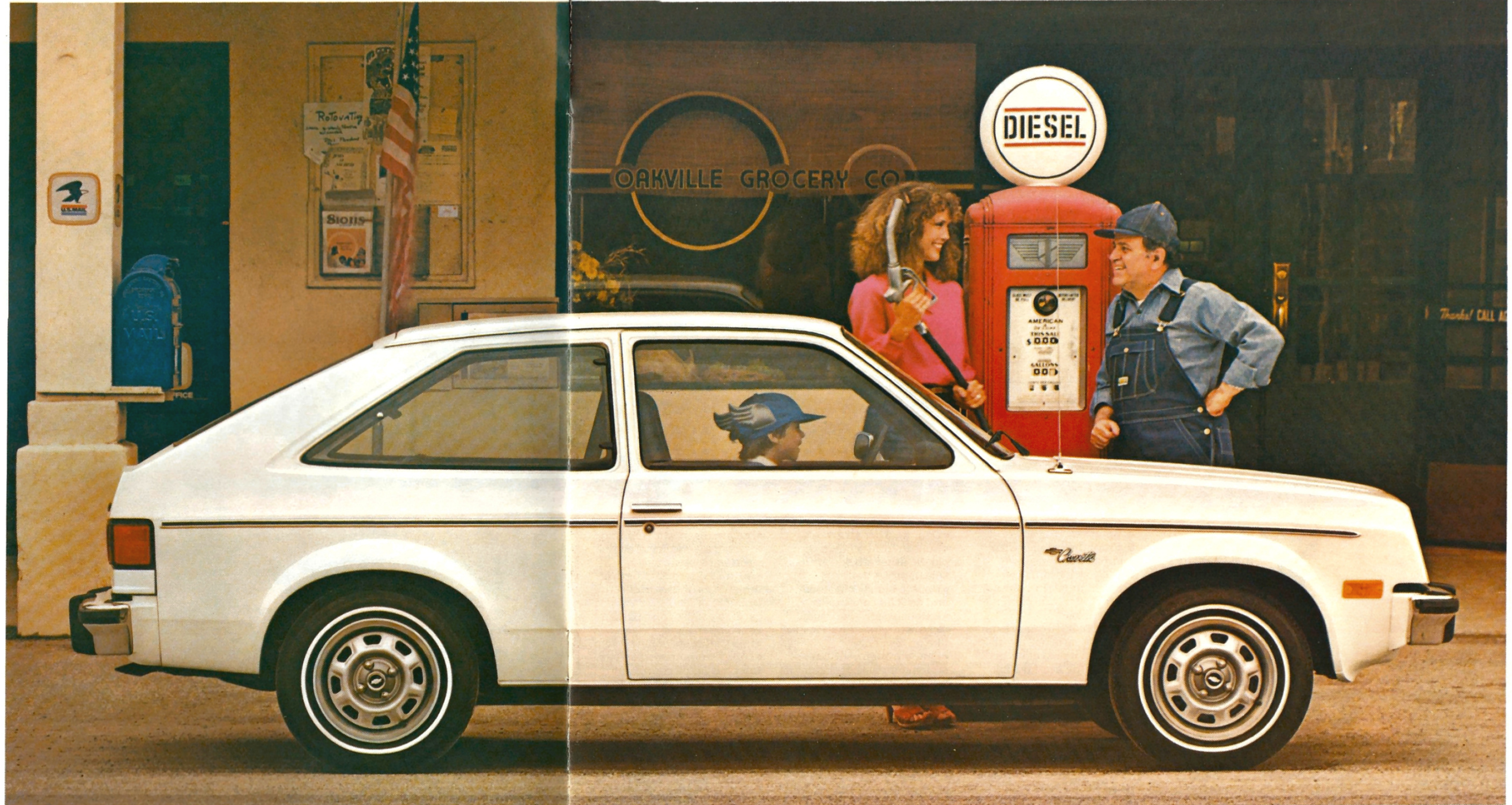
For Chevette toughness, driving pep, and value, we now offer three hatchback packages: Chevette. Chevette Scooter. And the new Diesel Chevette.

Whichever you choose, if it's a "Chevette," it's a move in the right direction.

Important: A word about this catalog.

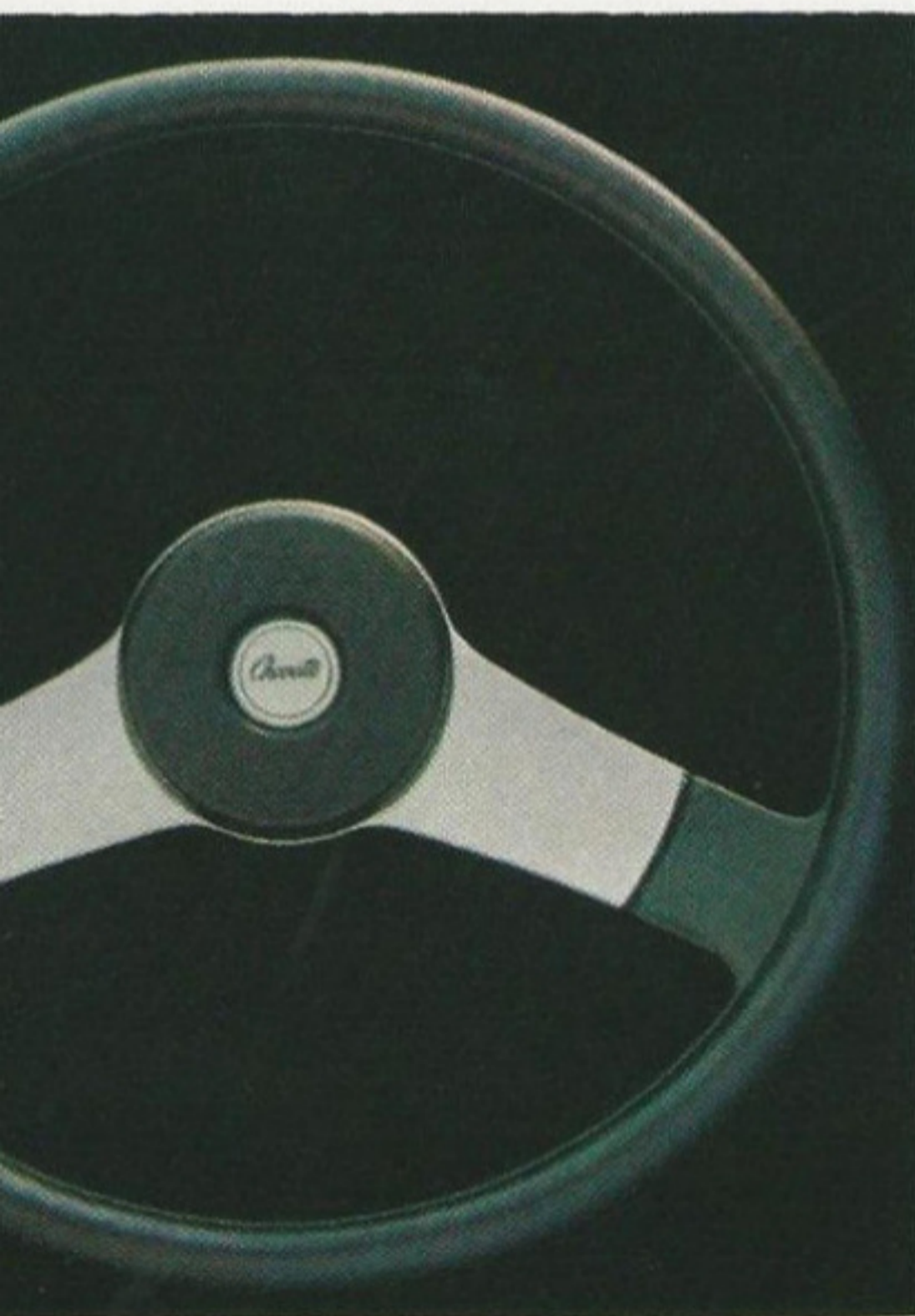
We have tried to make this catalog as comprehensive and factual as possible and we hope you find it helpful. However, since the time of printing, some of the information you will find here may have been updated. Also, some of the equipment shown or described throughout this catalog is available at extra cost. Your dealer has details and, before ordering, you should ask him to bring you up to date.

The right is reserved to make changes at any time, without notice, in prices, colors, materials, equipment, specifications and models. Check with your Chevrolet dealer for complete information.

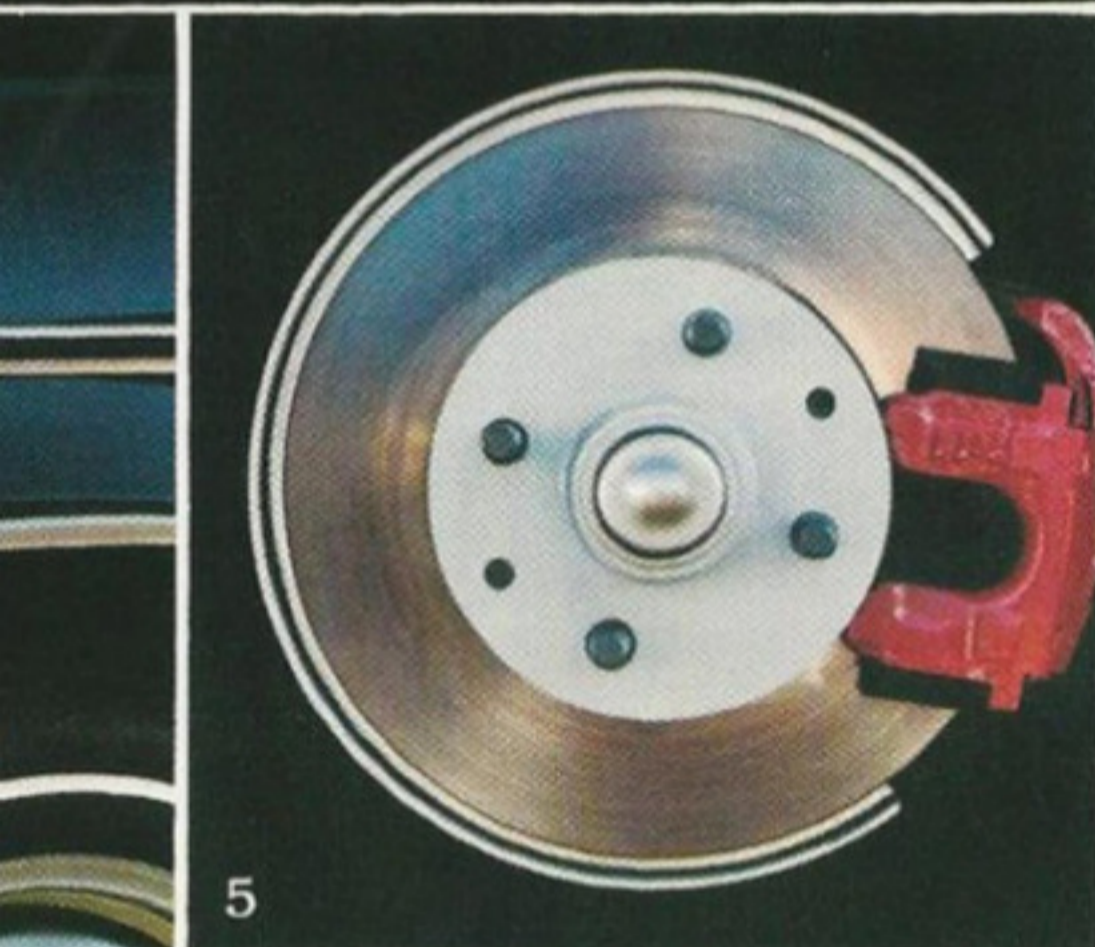


Diesel Chevette 2-Door Hatchback Coupe in White.

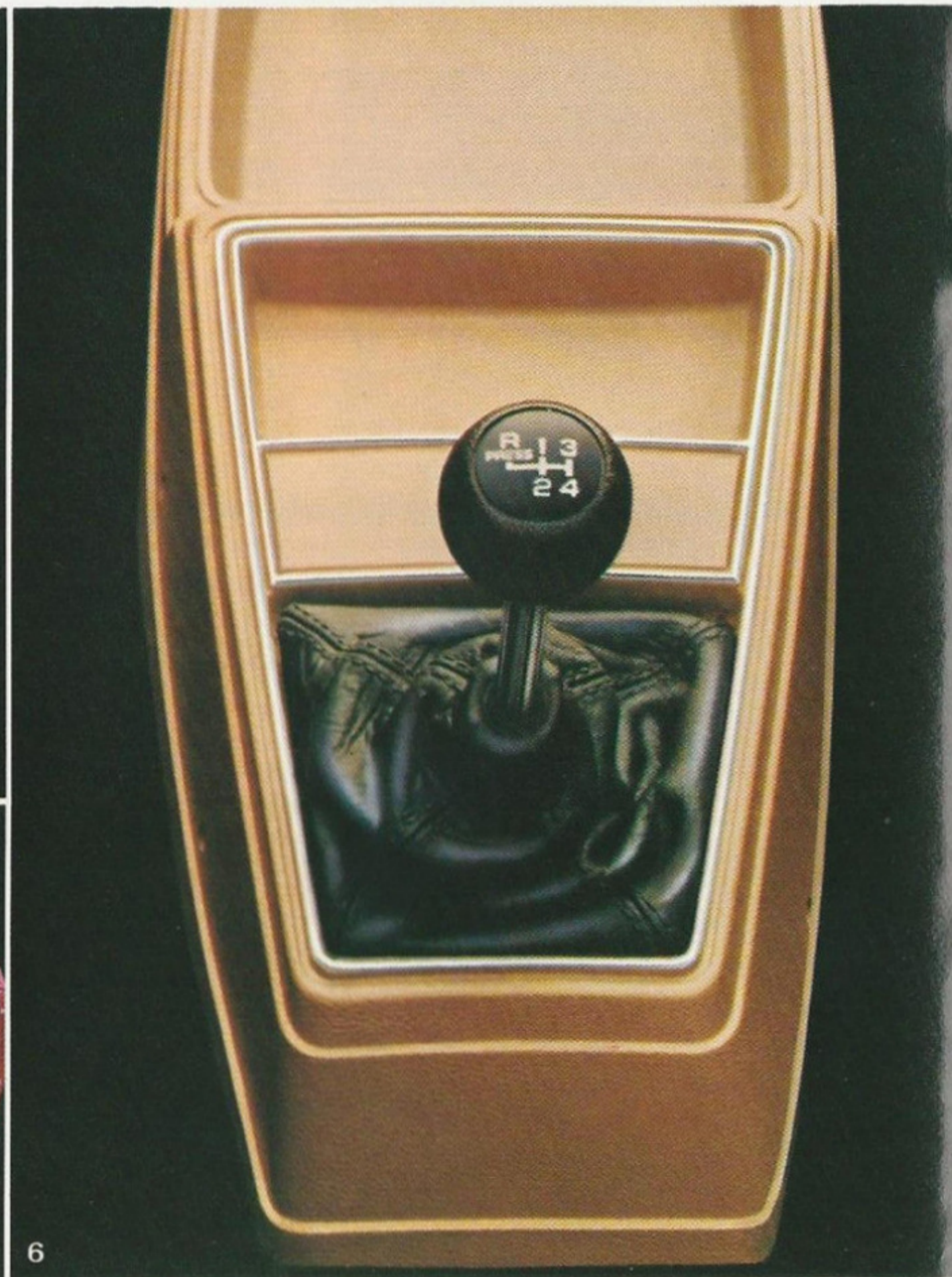
PACKAGE THAT'S BIG ON STANDARDS.



4



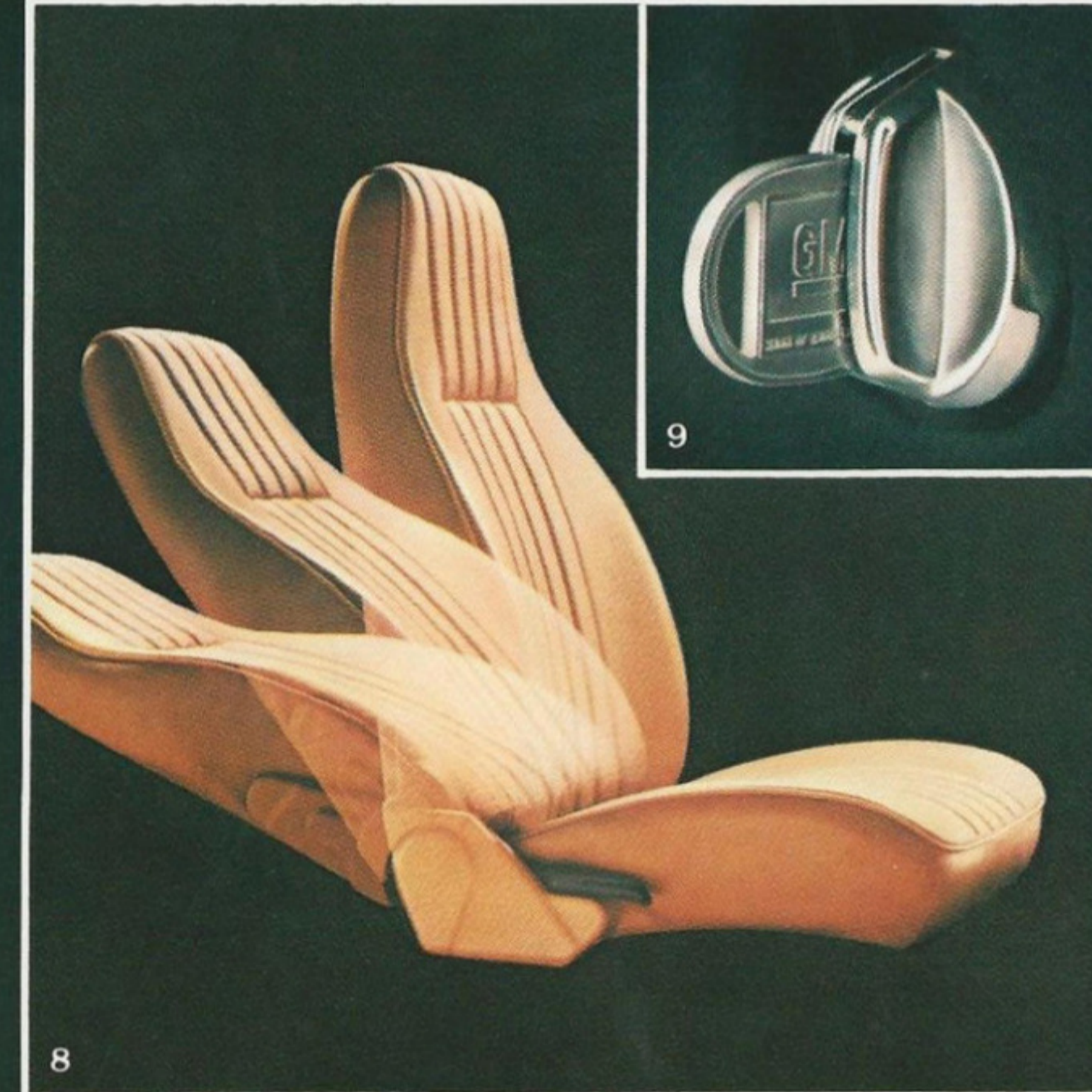
5



6



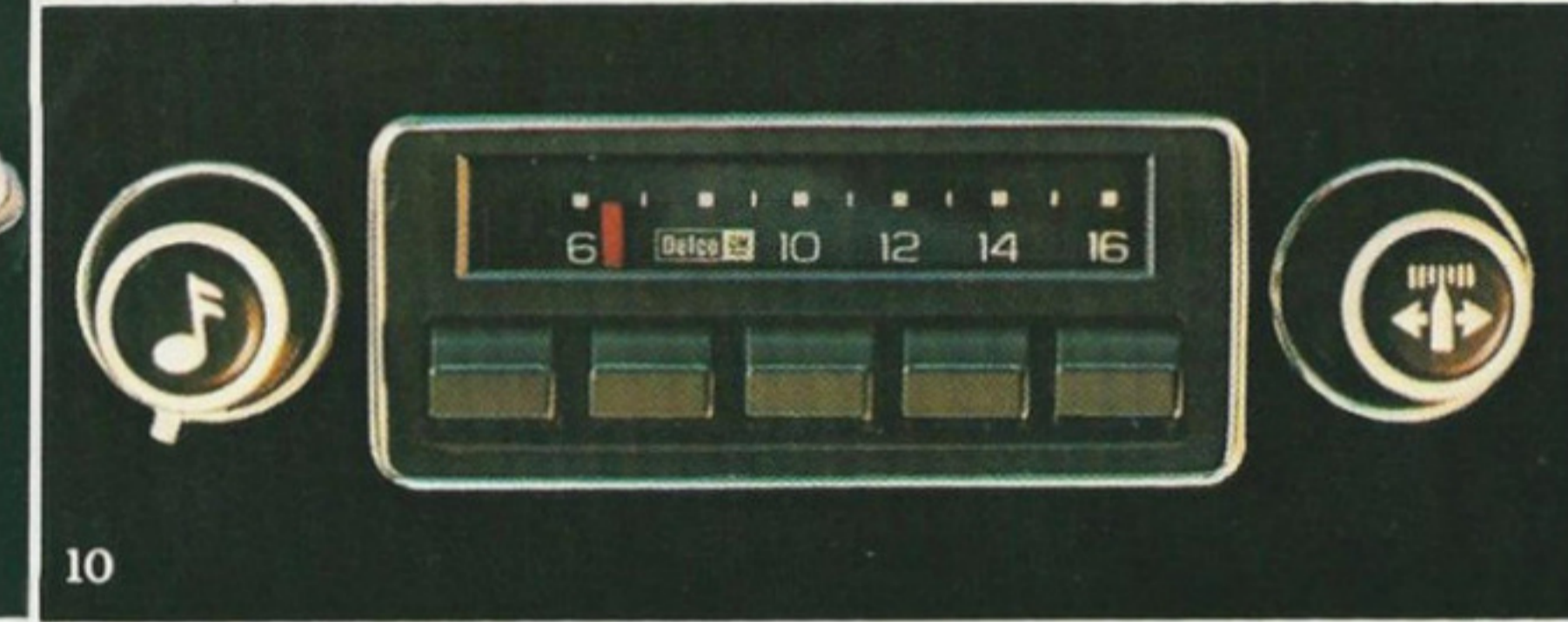
7



8



9



10

- 4 Sport steering wheel*
- 5 Front disc brakes with audible wear sensors
- 6 Fully synchronized four-speed manual transmission, sport shifter,* and center floor console*
- 7 Wide hatch for easy loading into fully carpeted, flat-floor area with rear seat folded
- 8 Reclining front bucket seats*
- 9 Glove compartment with lockable door*
- 10 GM-Delco AM radio with push buttons.*

Plus all these others:

Body

- Body by Fisher

- Door weather strip seals
- Bolt-on front fenders with plastic inner shields for road splash protection
- Double-panel door, hood and deck lid construction
- Extensive anti-corrosion treatments, including Plastisol film on lower body
- Flow-through ventilation system for passenger comfort
- Spare tire under rear load floor
- Swing-out rear side windows on Hatchback Coupe*
- Unitized body construction.

Engine/Chassis

- 1.6 Liter 2-Bbl. L4 engine
- Delcotron generator with built-in solid-state regulator

- Built-in diagnostic connector to facilitate servicing of engine electrical system
- Advanced torque-tube drive design contributes to effective isolation of road shock and excessive noise from passenger compartment
- Full Coil suspension system
- Long recommended service intervals for oil change, oil filter, spark plugs, chassis lubrication and available automatic transmission
- 50,000-mile replaceable element air filter
- Energy-absorbing bumper system
- Single exhaust system
- Compact spare tire
- High Energy Ignition system

- Coolant recovery system helps prevent costly coolant loss
- Front stabilizer bar
- Delco Freedom II battery that never needs refilling; sealed side terminals help prevent corrosion buildup
- Rack-and-pinion steering
- Compact turning diameter
- 12.5-gallon-rated fuel tank
- Visible ball joint wear indicators on front suspension lower control arms.

Interior

- All-vinyl interior trim
- Cigarette lighter*
- Courtesy dome light
- Deluxe color-keyed instrument panel*

- Cut-pile carpeting
- Hidden seat belt retractors
- Molded full foam seat construction
- Foam headliner.

Safety Features

Occupant Protection

- Manual lap/shoulder belts with push-button buckles for driver and right front passenger (driver's side includes visual and audible warning system)
- Manual lap belts with push-button buckles for rear passenger positions
- Passenger guard door locks
- Energy-absorbing steering column

- Safety door latches and stamped steel hinges
- Folding seat back latches
- Energy-absorbing padded instrument panel and front seat back tops
- Laminated windshield/tempered side and rear glass
- Safety armrests*
- Identification symbols for controls and displays.

Accident Avoidance

- Side marker lights and reflectors
- Parking lamps that illuminate with headlamps
- Four-way hazard warning flasher
- Lane-change feature in direction signal control

- Backup lights
- Windshield defrosters, washer and dual-speed wipers
- Vinyl-edged inside mirror
- Outside rearview mirror
- Dual master cylinder brake system with warning light
- Starter safety switch
- Dual-action safety hood latches.

Anti-theft

- Audible anti-theft ignition key reminder buzzer
- Anti-theft steering column lock
- Inside hood release.

*Except Scooter.

CHEVETTE POPULARITY SPEAKS FOR ITSELF.

Six years of proven ability resulted in over one-and-a-half million Chevette owners. That alone says a lot.

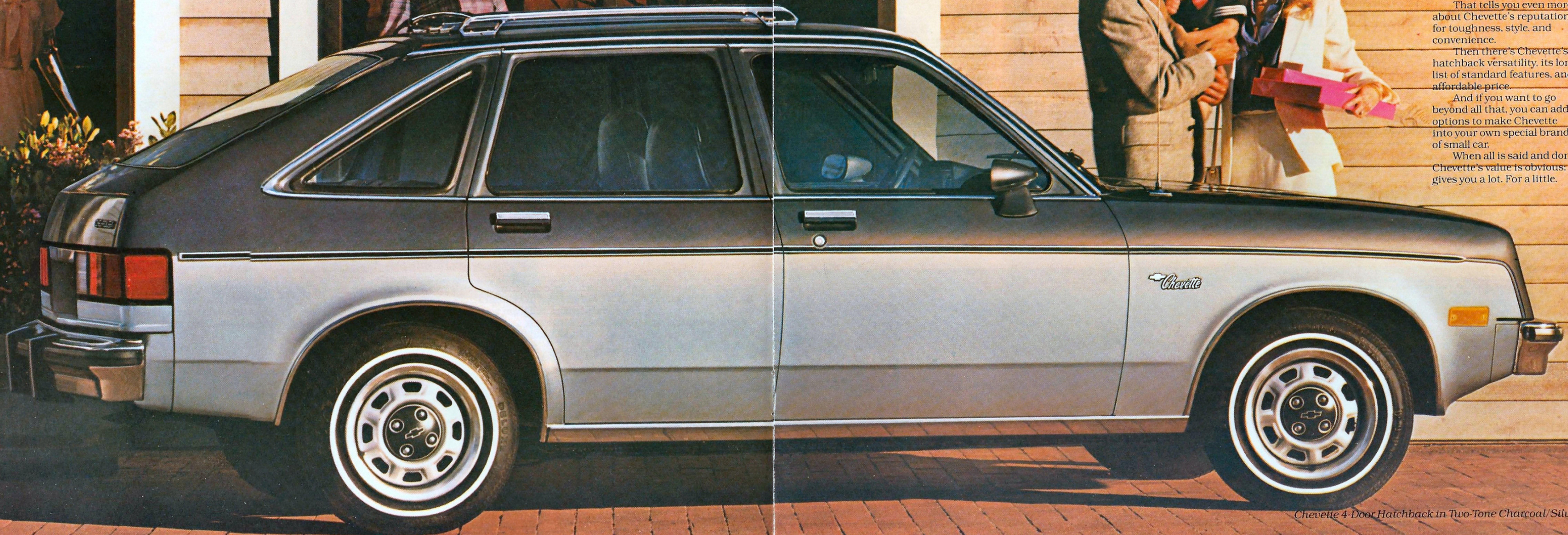
In the last three years over 100,000 of those Chevetttes were sold for the demanding job of fleet use. In fact, fleet sales doubled over that three-year period—a tribute to Chevette's capabilities in the tough professional and profit-making realm of business.

That tells you even more about Chevette's reputation for toughness, style, and convenience.

Then there's Chevette's hatchback versatility, its long list of standard features, and affordable price.

And if you want to go beyond all that, you can add options to make Chevette into your own special brand of small car.

When all is said and done, Chevette's value is obvious. It gives you a lot. For a little.



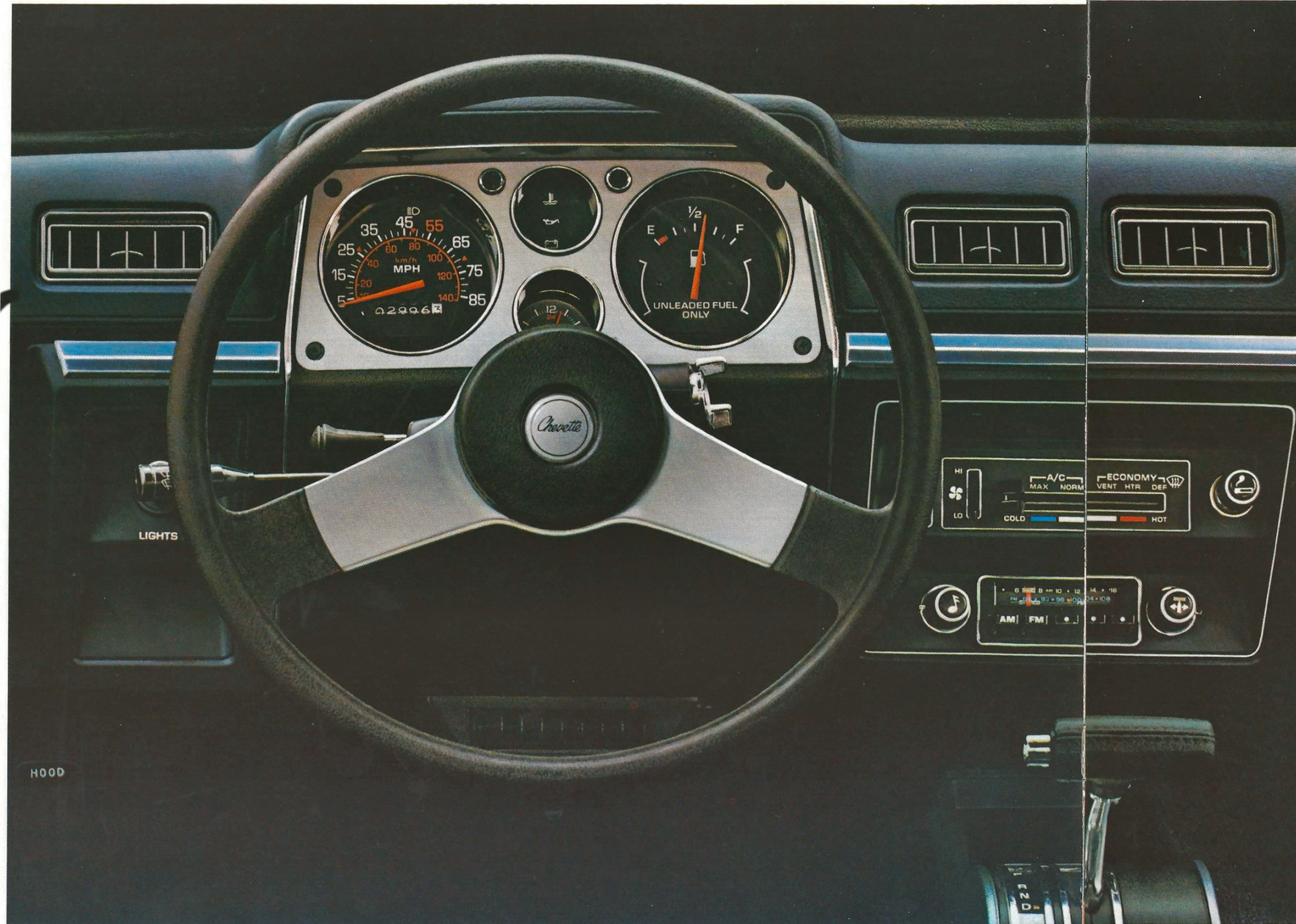
Chevette 4-Door Hatchback in Two-Tone Charcoal/Silver.

ROOM TO RELAX, ROOM TO ENJOY.



Chevette Custom seats with Dark Blue cloth.

MORE THAN A DASH OF GOOD LOOKS.



Chevette color-keyed instrument panel.*



Chevette front bucket seats, shown in Camel cloth.

Check out Chevette's interior and discover it's as easy on the eye as it is fun to drive.

In fact, a host of 1982 features provide for your comfort and convenience.

Relax in full foam-cushioned front bucket seats. In Coupe and Sedan models, front seats even recline* to let you pick your own most comfortable driving or resting position.

New molded foam headliner softens and blends into the color scheme you select.

New suspension tuning and acoustic treatments help isolate you inside from road noise outside.

The handsome mini-console* houses a sport shifter* for the standard four-speed manual or newly optional five-speed transmission.

And that's just for starters. You really should get behind the wheel to enjoy the view.

To decide which Chevette color is your favorite, check the chart to the right.

Interior Colors

	Silver Gray	Charcoal	Dark Blue	Camel	Maroon
Chevette Custom Interior†*					
Custom Cloth Bucket	■	■	■	■	■
Standard Interior*					
Vinyl Bucket		■	■	■	■
Cloth Bucket†			■	■	■
Scooter Interior					
Vinyl Bucket		■		■	
Cloth Bucket†				■	

Exterior Colors

(Coordinate with interior colors above)

White	■	■	■	■	■
Silver (Metallic)	■	■	■	■	■
Black	■	■	■	■	■
Light Blue (Metallic)		■	■		
Dark Blue (Metallic)	■		■	■	
Gold (Metallic)		■		■	
Beige			■	■	■
Red	■	■	■	■	■
Maroon (Metallic)	■			■	■
Charcoal (Metallic)	■	■			

Custom Two-Tone Colors (optional)*

Black/Gold (Metallic)	■	■			
Charcoal/Silver (Metallics)	■	■			
Dark Blue/Light Blue (Metallics)			■		
Maroon (Metallic)/Beige				■	■

*Except Scooter.

†Available at extra cost.

SCOOTER'S BASIC IS BEAUTIFUL.



New Chevette Scooter 4-Door Hatchback in Beige.



Chevette Scooter 2-Door Hatchback in Silver Metallic.



Chevette Scooter front bucket seats shown in Charcoal.

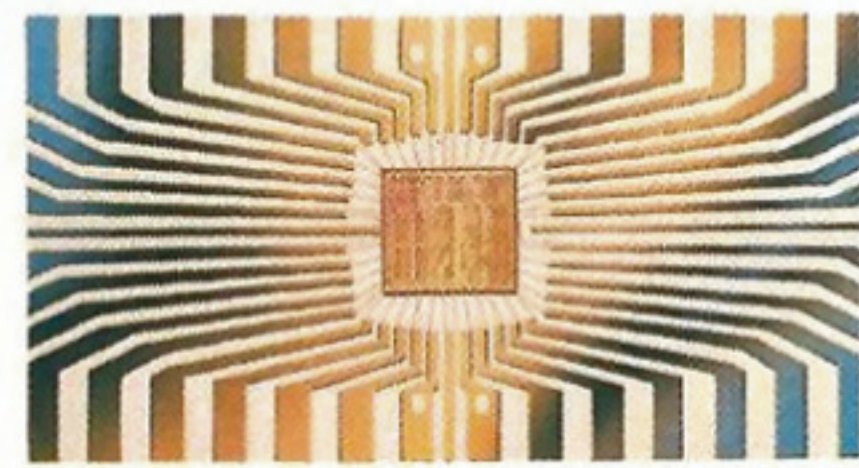
Chevette Scooter moves you with the same gusto as Chevette. Without the frills. And that can save you money.

Yet, Chevette Scooter keeps the important things—quality, toughness, engineering strength, and overall value.

Scooter even includes styled steel wheels, glass-belted radial ply tires, column-mounted "Smart Switch," full foam front bucket seats, and more.

This year your choice of Scooters is widened to include both the 2-Door Hatchback and the new 4-Door Hatchback.

Chevette Scooter's got a lot going for it. And if you're watching your budget, Scooter is one special way to save money and have fun at the same time.



Computer Command Control
This sophisticated, thoroughly tested on-board computer continuously monitors gasoline engine functions. It also fine-tunes engine per-

formance, under all normal operating conditions, as you drive. Air-fuel mixtures are constantly adjusted to driving conditions, and the system helps compensate for altitude, barometric pressure and temperature changes.

Another benefit of Computer Command Control is that it is covered by the 5-year/50,000-mile emissions system warranty. Ask your dealer for details.

Dimensions

(in inches)

	4-Door Hatchback	2-Door Hatchback	4-Door Scooter	2-Door Scooter
Exterior				
Wheelbase	97.3	94.3	97.3	94.3
Length (overall)	164.9	161.9	164.9	161.9
Width (overall)	61.8	61.8	61.8	61.8
Height (loaded)	52.9	52.9	52.9	52.9
Tread - Front	51.2	51.2	51.2	51.2
Tread - Rear	51.2	51.2	51.2	51.2

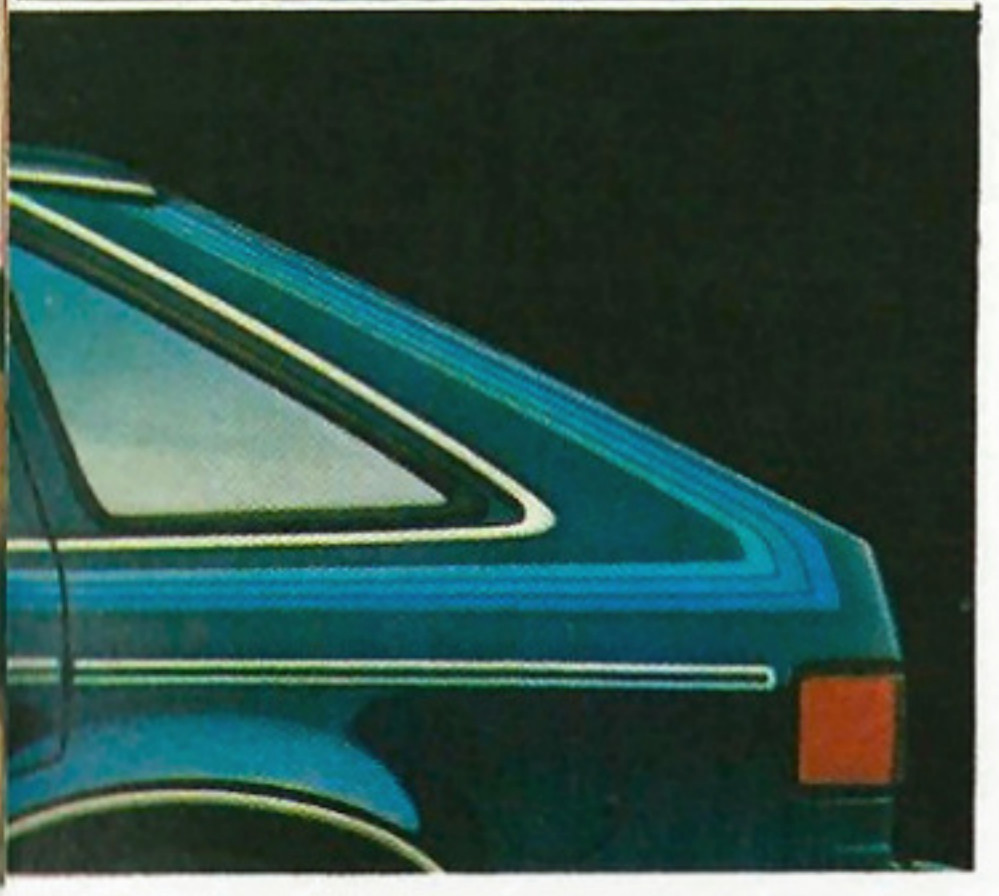
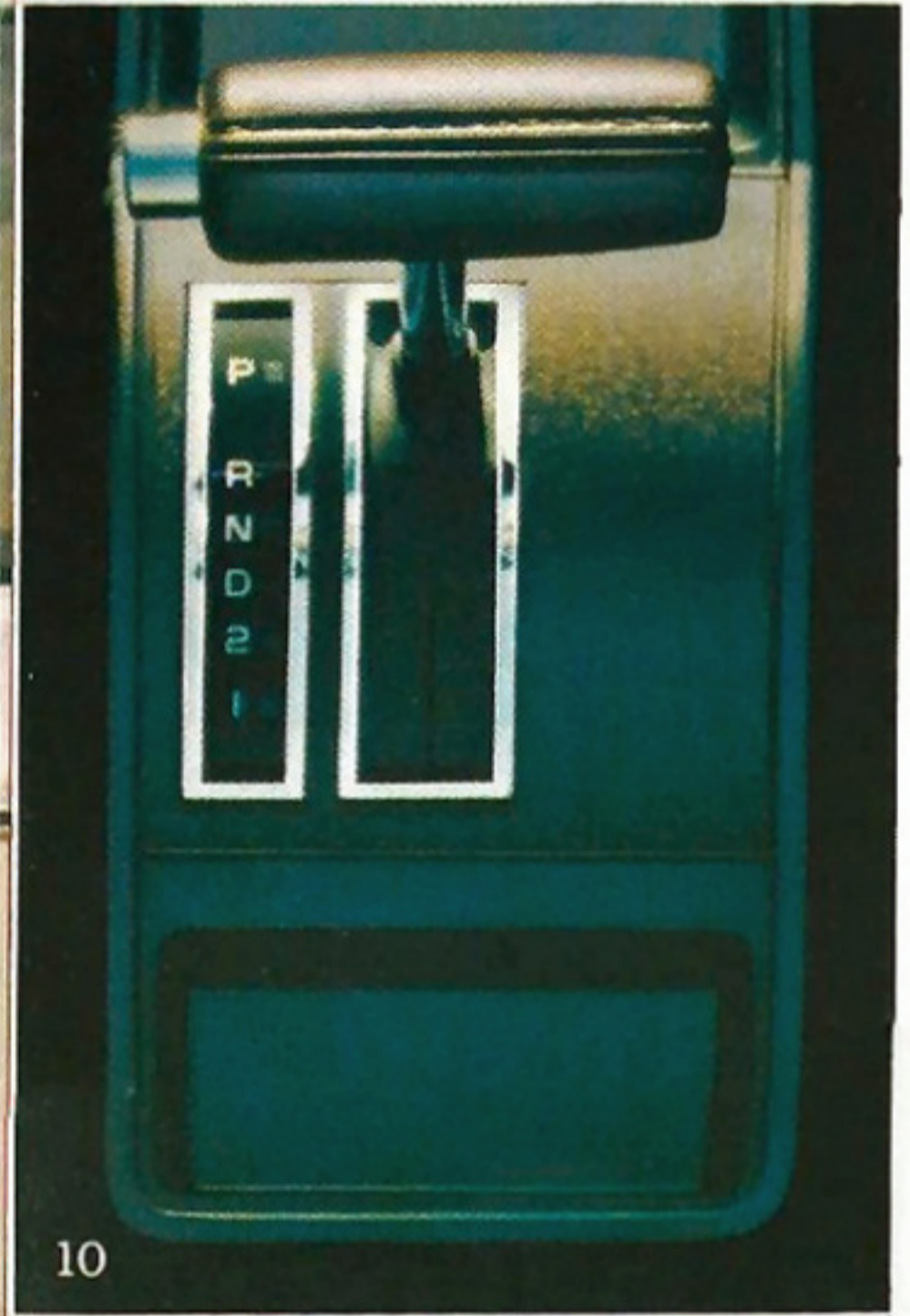
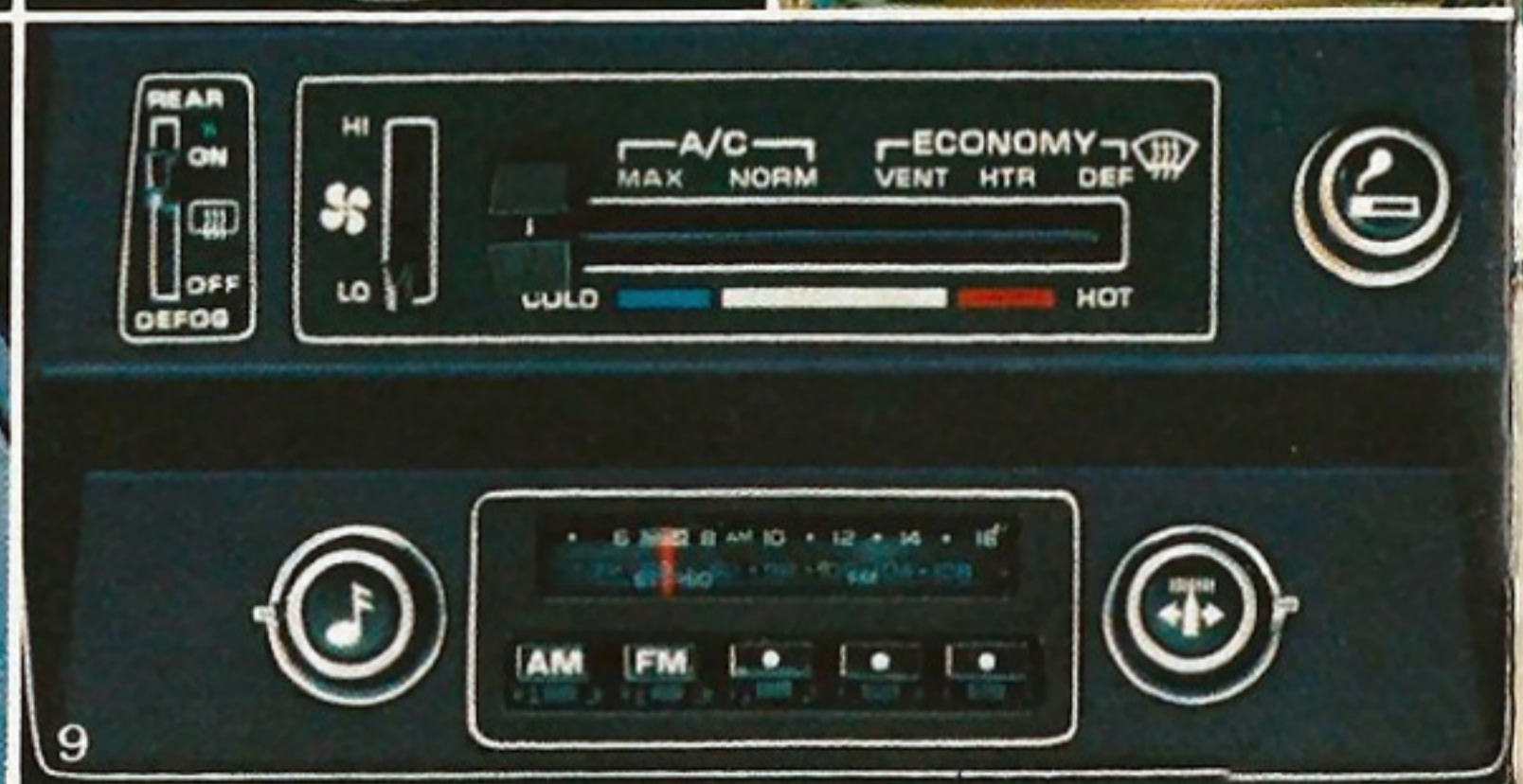
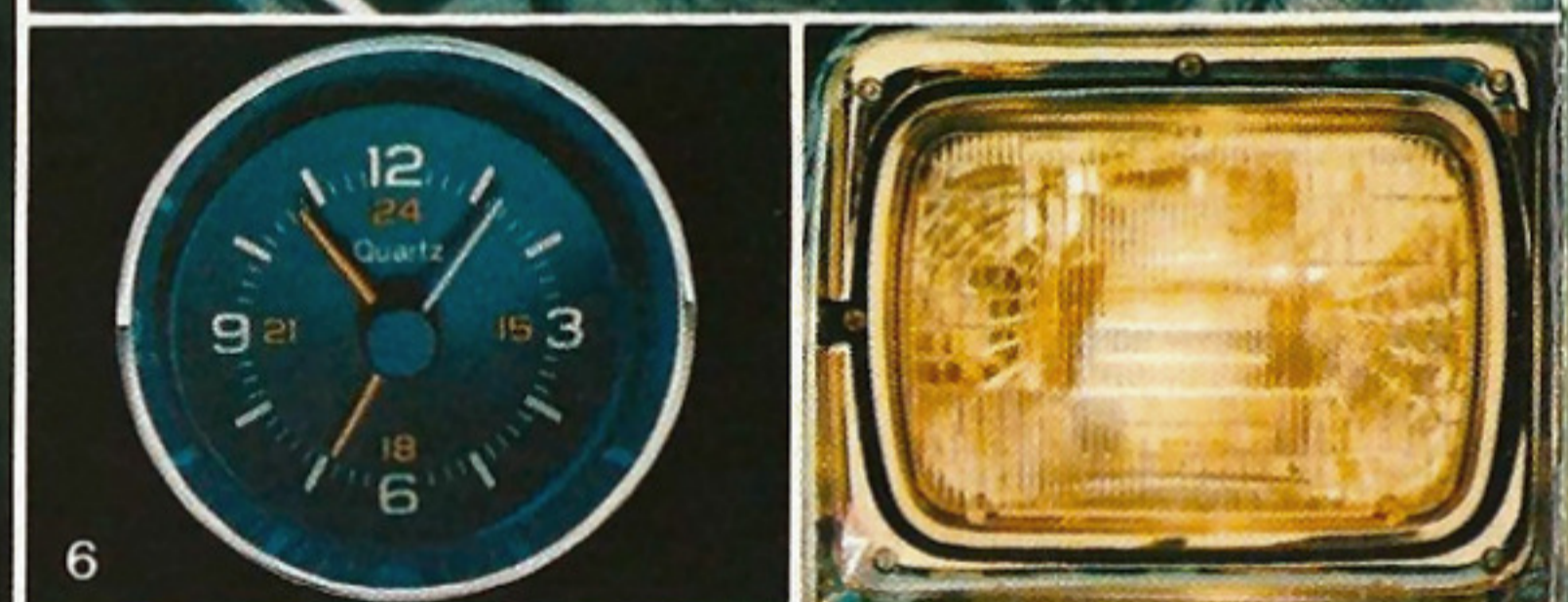
Interior

Head Room - Front	38.3	38.1	38.3	38.1
Head Room - Rear	37.4	37.3	37.4	37.3
Leg Room - Front	41.7	41.7	41.6	41.6
Leg Room - Rear	33.2	30.9	33.2	30.3
Hip Room - Front	49.4	49.9	50.8	49.9
Hip Room - Rear	41.2	40.8	41.2	40.8
Shoulder Room - Front	49.8	50.1	51.1	50.1
Shoulder Room - Rear	49.4	49.4	50.6	49.4

Cargo/Luggage Compartment

Liftover Height	29.8	29.6	29.8	29.6
Interior Length (max.)	60.9	57.9	60.9	57.9
Usable Luggage Capacity (cu. ft.)*	28.6	27.0	29.3	27.0

*With rear seat down.



Even with all its standards, Chevette still leaves room for special choices of your own. Shown:

- 1 Roof carrier for extra luggage capacity, handsome looks
- 2 Sport mirror; left-hand remote*
- 3 5-speed manual transmission (included with diesel; not available on Chevette 4-Dr. Hatchback Sedan)
- 4 Rally wheel trim (includes silver or black tone wheel with bright trim rings and larger black hub cover)
- 5 Comfortilt steering wheel, adjustable to six positions
- 6 Electric quartz analog clock
- 7 Halogen hi-beam headlights
- 8 Electric rear window defogger and rear wiper/washer
- 9 AM/FM radio with push-button tuning shown with air conditioning**
- 10 Automatic transmission with three speed ranges; may be operated manually
- 11 Sport striping, shown here in blue (not available with Custom Two-Tone paint)*

Options not shown include:

Body

- Deluxe exterior (includes wheel opening, deluxe side window reveal and specific rocker panel moldings)*

A Word About Engines

Some Chevettes are equipped with engines produced by other GM divisions,

- Body side moldings (Scooter option)
- Door edge guard
- Sport mirrors; remote control left-hand, manual right-hand*
- Custom Two-Tone paint (not available with sport striping)*

Convenience/Comfort

- Cigarette lighter (Scooter option)
- Quiet Sound Group*
- Tinted glass.

Delco Sound Equipment

- AM radio (Scooter option)
- AM/FM radio
- AM/FM stereo radio*
- Rear seat speaker (not available with AM/FM stereo radio)*

Engine/Chassis

- Heavy-duty battery*/***
- Heavy-duty cooling*
- Power brakes (required with diesel)
- Power steering (optional only with air conditioning and automatic transmission).

Interior

- Auxiliary lighting (includes underhood, glove compartment* and courtesy lights, right front door dome light switch on Scooter and headlamp-on reminder)
- Color-keyed front and rear floor mats
- Custom interior (includes

YOUR OPTIONS ARE OPEN.

A word about assembly, components and optional equipment in these Chevettes.

The Chevettes described in this catalog are assembled at facilities of General Motors Corporation operated by the GM Assembly Division. These vehicles incorporate thousands of different components produced by various divisions of General Motors and by various suppliers to General Motors. From time to time during the manufacturing process, it may be necessary, in order to meet public demand for particular vehicles or equipment, or to meet federally mandated emissions, safety and fuel economy requirements, or for other reasons, to produce Chevrolet products with different components or differently sourced components than initially scheduled. All such components have been approved for use in Chevrolet products and will provide the quality performance associated with the Chevrolet name.

Tires/Wheel Trim

- P155/80R-13 glass-belted radial ply white-stripe (Scooter option)
- P175/70R-13 steel-belted radial ply white-stripe.

Continuous Protection Plan



The GM Continuous Protection Plan offers service protection in addition to that provided by GM's new vehicle limited warranty. Ask your dealer about it. Coverage available only in the U.S.A. and Canada.

Also, see your Chevrolet dealer for details and information about GM's new 24-month/24,000-mile Power-Protection-Plus Limited Warranty.

Not all options are available on all models.

See your dealer for up-to-date ordering information and specific model/option availability.

*Not available on Scooter.
**Not available on Diesel.
***Not available with 5-speed transmission.

Chevette Power Teams

Engine	Ordering Code	Displacement (cubic inches)	Engine Availability	Transmission Availability		
				4-Spd. Manual (1)	5-Spd. Manual	Automatic (2)
All States Including California						
1.6 Liter 2-Bbl. L4(A)	L17	98	Std.	Std.	EC†	EC
1.8 Liter L4 Diesel(B)(3)	LJ5	111	Std. Diesel Model	NA	Std.	EC

Std. - Standard. NA - Not Available. EC - Extra Cost.
†Scooter and 2-Door Hatchback models only; not available with air conditioning or power steering.

(1) With floor-mounted shift control (note: mini-console-mounted except on Scooters).

(2) With mini-console.

(3) NA on Scooter models.

PRODUCED BY GM: (A) CHEVROLET MOTOR DIVISION; (B) ISUZU MOTORS LIMITED, JAPAN.

With respect to extra cost optional equipment, make certain you specify the type of equipment you desire on your vehicle when ordering it from your dealer. Some options may be unavailable when your car is built. Your dealer receives advice regarding current availability of options. You may ask the dealer for this information. GM also requests the dealer to advise you if an option you ordered is unavailable. We suggest that you verify that your car includes the optional equipment you ordered or, if there are changes, that they are acceptable to you.

Chevy makes good things happen... for you!



Chevette