

THE BUICK BUYER'S GUIDE. 1987.



B U I C K

Contents:	
2	Riviera
6	Electra & Park Avenue
10	LeSabre
14	Regal
18	Century
22	Somerset
26	Skyhawk
30	Skyhawk
34	Electra Estate Wagon
36	LeSabre Estate Wagon
40	Century Wagon
44	Skyhawk Wagon
48	Buying a Buick

Each year, when new Buicks are introduced, we write yet another chapter in an automotive history that is among the world's richest – the history of Buick. Traditionally, Buicks have offered quality. And Buick quality has a special goal: to provide a comfortable, comforting, and competent automobile that allows its owner to drive pleasurably in the real world. Modern driving conditions place extraordinary demands on both car and driver. Buicks are built to meet those demands in a quiet, confident manner. They are better, in short – where it really matters.

The task of building Buicks is an undertaking that has no outer limits. Building Buicks entails a ceaseless, tireless seeking of balance: comfort with agility, practicality with luxury, durability with style. And always, Buick's belief in balancing artistry with technology.

Evidence of this constant search for balance will be found in every Buick built. It is a Buick component in which we take considerable pride, an ingredient that sets the cars on the following pages apart. One of the vital qualities that makes a Buick a Buick. After all, the building of a car whose single goal is sportiness can be accomplished with relative ease. The difficult car to build is the automobile that combines spirit with dignity, a significant part of the Buick personality.

Another element of every Buick is tradition, a linking of the past to the present and, in turn, to the future. In these days of far-reaching technological achievement, it is possible – in theory, at least – for any group of educated technicians to build any product they wish. An enormous body of electronically stored information allows the modern manufacturer more access to past technological development than ever before. Yet, despite all this, tradition continues to play a vital part.

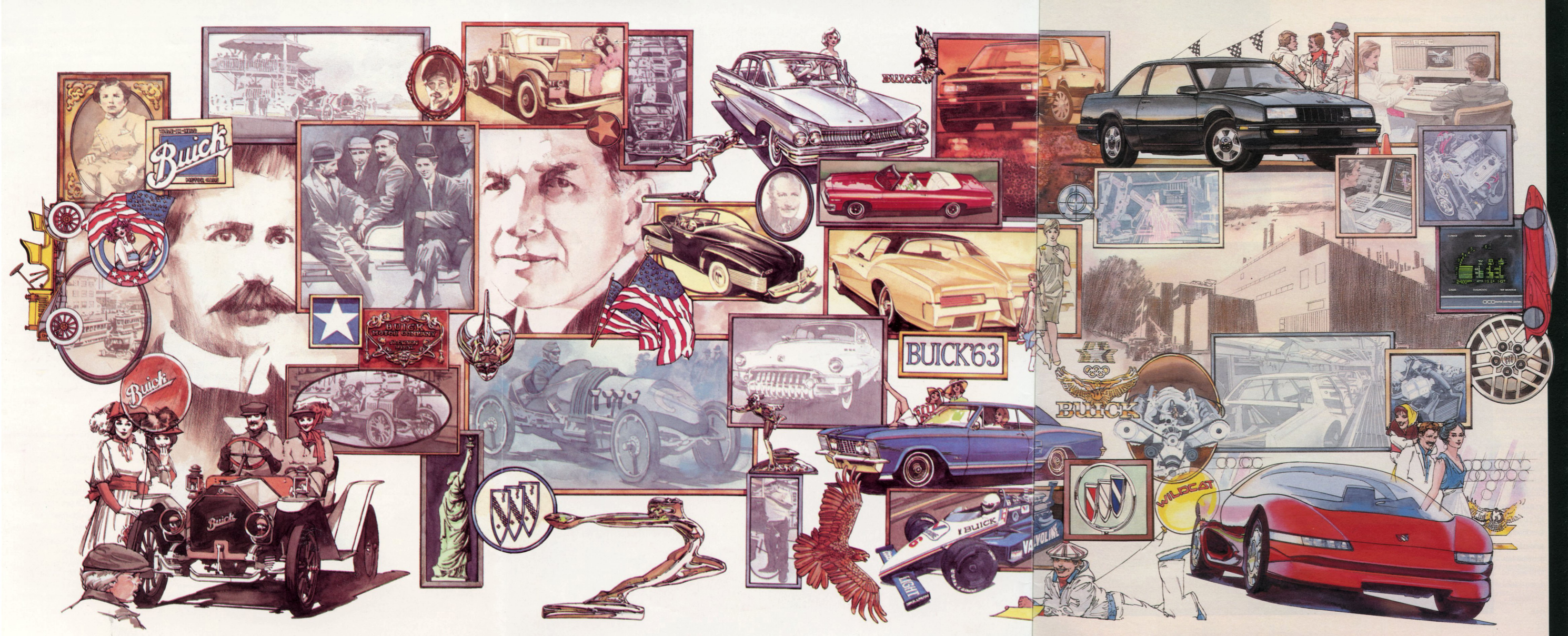
It is easy for someone to utter the words, "We will build better cars." But if those words are spoken by the automotive descendants of pioneers whose first cars appeared four years after the turn of the century, they take on added meaning.

Almost from the beginning, Buick became a synonym for luxury. Buicks transported royalty. And film stars. And presidents. Buicks also circled the globe – in 1925 to prove the car's strength and durability; in 1983 in search of further progress in those same areas. Thus, the tradition of balancing luxury and durability is an uncommonly long one at Buick.

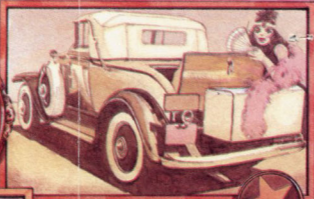
We invite your careful attention to the 1987 Buick line. We are proud of every car it contains, from the most inexpensive to the most luxurious. This pride in our products is itself a tradition of Buick. We took pride in our millionth Buick – in 1923. And in our twenty-six millionth Buick – last year. When you have examined the 1987 Buicks, we believe you will understand and appreciate the proud spirit of Buick.

And we believe also that you, as a person who appreciates the enduring things of life, will understand what we mean when we say that our Buicks are built to be better where it really matters – in the demanding world of day-to-day driving.

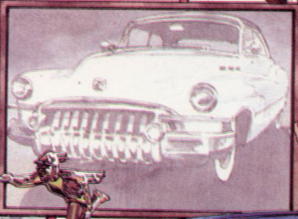
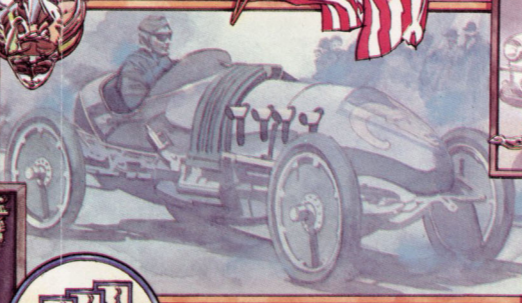
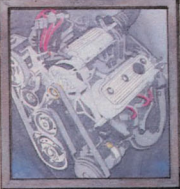
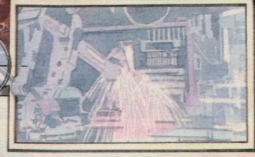
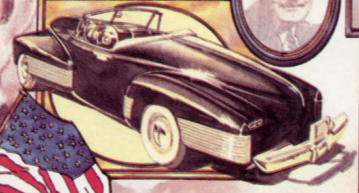
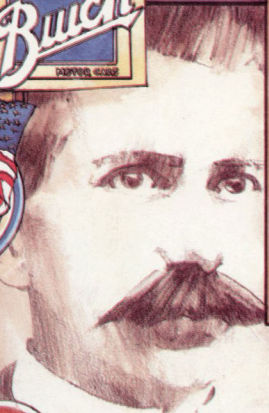
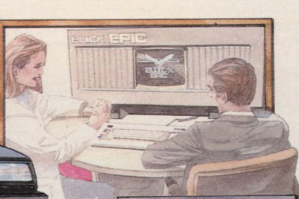
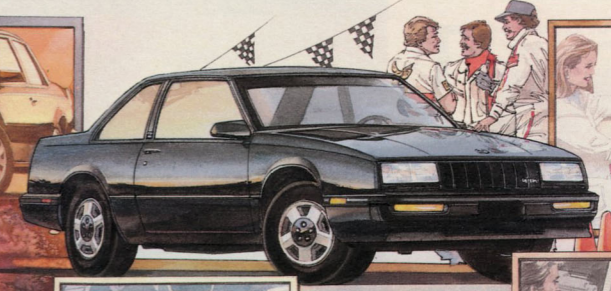




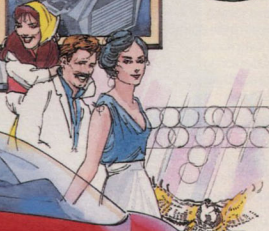
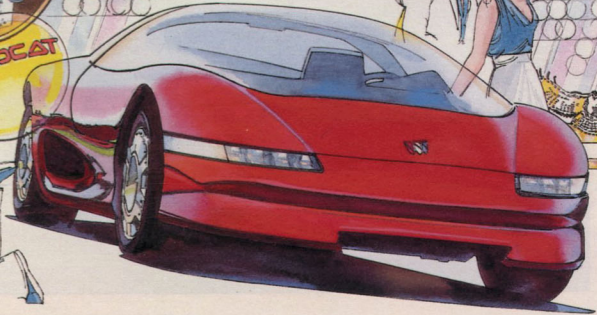
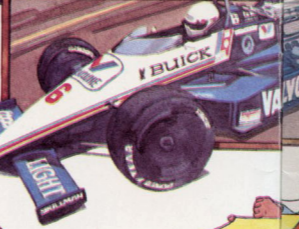
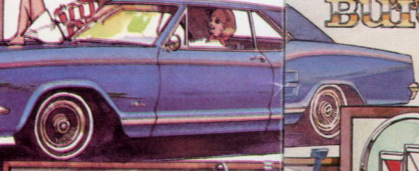
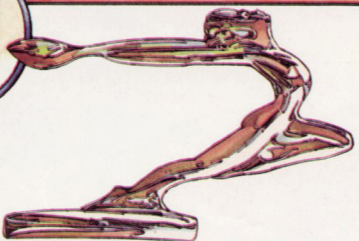
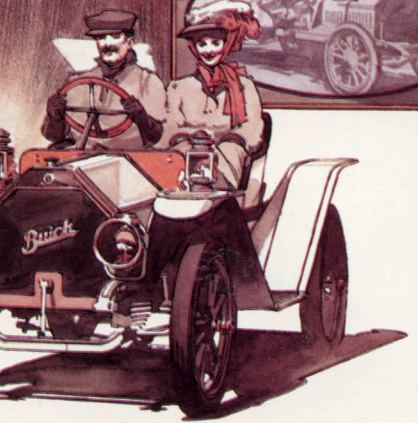
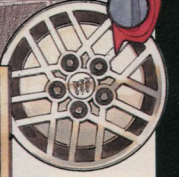
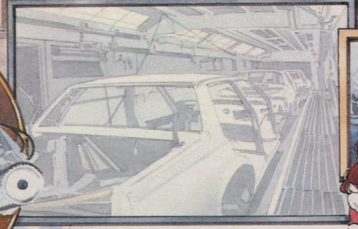
BUICK
VALVE-IN-HEAD
VALVE-IN-HEAD
VALVE-IN-HEAD



BUICK



BUICK 63

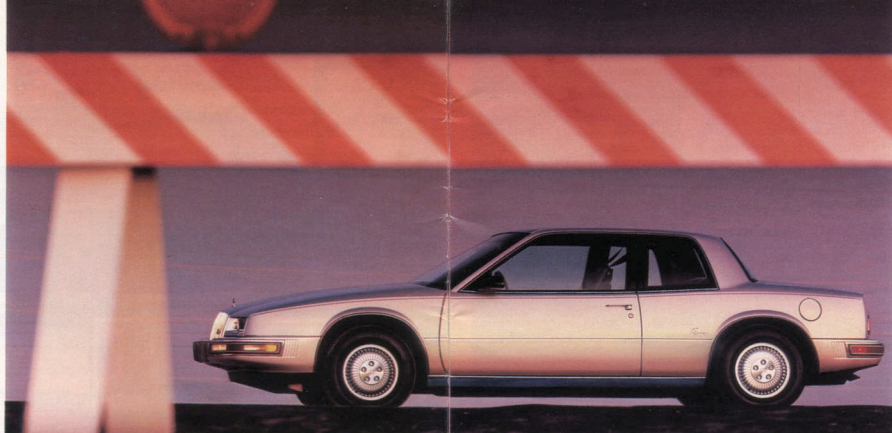




► The 1987 Riviera. A forward-raked, aerodynamic design complements a dignified, modern exterior uninterupted by ostentation.

▲ The Riviera is powered by a performance-oriented 3.8-litre engine fitted with sequential-port fuel injection.

► The Riviera T Type – A personal luxury coupe equipped with the famous Gran Touring suspension and other features designed for the driver who loves to drive.



► The Power Comfort seats in the Riviera T Type are of a unique design which allows electronic adjustment to fit the needs of virtually any driver.

► The Riviera Graphic Control Center. Duplicating its capabilities would require more than 90 conventional buttons and switches.



Riviera: An Automotive Legend

There is no finer Buick. That single sentence sums up the innovation, expertise and care lavished on the Riviera by the designers, engineers and technicians. This newest in a line of personal luxury cars that began almost a quarter-century ago can also be described as one of the most technologically advanced automobiles built anywhere in the world. This, the 1987 Riviera, carries the standard for all of Buick.

Riviera for 1987 is available in two versions, the Riviera Coupe and the Riviera T Type, each intended for unusually demanding buyers. The Riviera Coupe, with its unmistakable aura of luxury and its demonstrable leadership in technology, has had its every component selected with a view toward assembling the finest personal luxury car available. A Buick for the driver who will accept nothing less than luxury in its most advanced form.

Riviera T Type

The Riviera T Type is a modern interpretation of luxury, a car for the forward-thinking driver who requires his luxury to be complemented by responsive, responsible performance. The Riviera answers this demand without sacrificing one whit of the comfort that has been a Riviera hallmark since 1963.

In every sense of the word a grand touring coupe, the Riviera T Type, with its combination of power, handling qualities and luxury, is unique among Buicks. Its performance-oriented 3.8-litre V-6 engine is equipped with sequential-port fuel injection (SFJ), one of the most advanced systems available.

The T Type differs from the Riviera Coupe, having the firm Gran Touring suspension, quicker steering ratio and 15" aluminum wheels with P215/60R15 Eagle GT tires. These major components are complemented by such touches as a leather-wrapped steering wheel and silver lower-body paint. Taken together, the T Type's subtle differences will please the driver with a bit more experience – and an appreciation for the rewards of spirited driving.

In sum, the Riviera T Type represents an exhilarating blend of luxury, responsiveness, and true grand touring abilities.

Electronic Sophistication

Every Riviera is distinguished from ordinary cars by a remarkable electronic device called a Graphic Control Center™ (GCC)™. Positioned in the dash, the GCC represents a breakthrough in the vital communication link between car and driver. At the touch of a finger, the driver can call up clearly displayed information about operating systems, the driving environment, even time-speed-distance computations. Duplicating the command and information capabilities of the GCC would require more than 90 conventional switches, buttons and controls. New for 1987 is a GCC trip monitor display that reveals the car's progress toward a pre-set destination.

Interior Luxury

The electronically operated seating in the 1987 Riviera T Type merits a special mention. Four years ago, working with a major university, engineers took the first steps toward creating an orthopedically correct Buick seat that not only fought fatigue but created comfort. The result is the T Type's Power Comfort seats, a unique "membrane suspension" that far exceeds the conventional bucket seat. With a virtually limitless range of adjustments, the seats can be moved to suit almost any driver.

The entire interior of the 1987 Riviera reflects the same level of attention given to the seating. Contemporary in both design and material, the Riviera displays responsible ergonomics – the science of putting necessary controls within easy reach of the driver and passengers. The available interior fabrics include leather in the seating areas and suede trim.

From the Riviera T Type seats, with their electrically adjustable thigh supports and articulated headrests, to the luxurious carpeting, color-coordinated with the other interior materials, the Riviera for 1987 surrounds its occupants with an atmosphere of restrained, refined luxury.

Riviera is built to high standards, in the knowledge that only then would it meet your highest expectations.

™GCC™ and "Graphic Control Center" are used under Trade Mark License from Graphic Controls Corp., Buffalo, N.Y.



Model

Special Option Packages

Riviera	Coupe 257
---------	-----------

Riviera T Type Coupe — Includes: 3.8-litre SFI engine; automatic transmission with overdrive; 2.97 performance transaxle ratio; Gran Touring suspension; amber park and turn signal lenses; 15" aluminum wheels; steel-belted, radial-ply Eagle GT blackwall tires (P215/60R15); fast ratio power steering; leather-wrapped sport steering wheel; T Type ornamentation; silver lower body-side moldings; black rocker panel moldings; reversible leather/sheepskin Power Comfort seats in red or gray; leather-wrapped shift handle; specific paint in five colors with silver lower accent treatment standard.

T Package — Includes: T ornamentation; leather-wrapped sport steering wheel and shift handle; 2.97 performance transaxle ratio; Gran Touring suspension; 15" aluminum wheels; steel-belted, radial-ply Eagle GT blackwall tires (P215/60R15); fast ratio power steering.

Powertrain

Engine	Transmission
3.8-litre V-6 with Sequential-port Fuel Injection (standard)	Automatic with Overdrive (standard)

Refer to the EPA mileage estimate and engine supplement card included with this catalog.

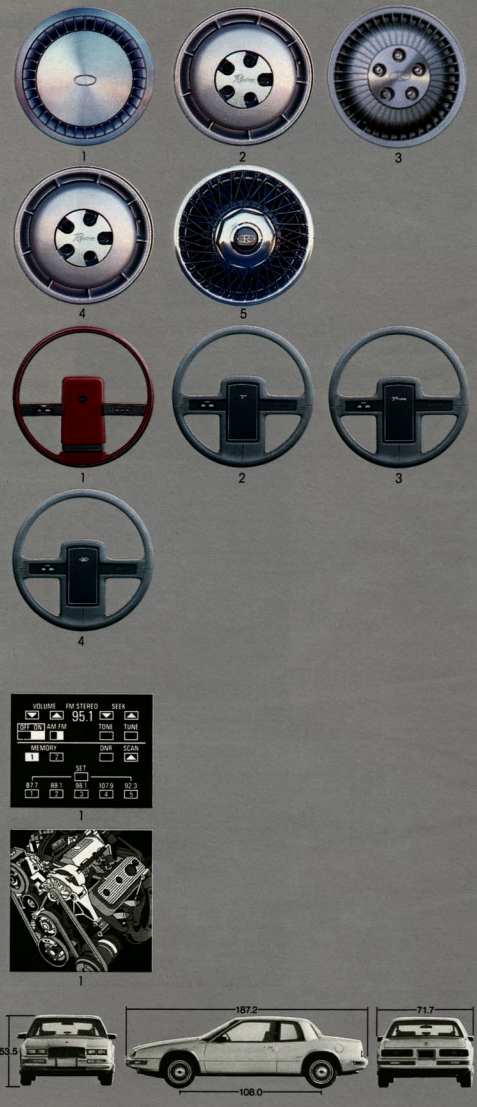
Exterior Colors

White	Silver Metallic
Dark Gray Metallic	Black Metallic
Light Blue Metallic	Dark Blue Metallic
Light Brown Metallic	Tan
Dark Red Metallic	Medium Blue Firemist
Red Metallic	Light Rosewood Metallic
Dark Brown Firemist	Medium Rosewood Metallic

Dimensions

Inches unless otherwise noted	Riviera Coupes
Overall	
Length	187.2
Width	71.7
Height	53.5
Wheelbase	108.0
Front Tread	59.9
Rear Tread	59.9
Interior Front	
Legroom	42.7
Headroom	37.6
Shoulder Room	57.9
Hip Room	55.9
Interior Rear	
Legroom	35.7
Headroom	37.6
Shoulder Room	57.4
Hip Room	55.4
Trunk Volume	13.9 cu. ft.
Fuel Tank Capacity	18.0 gallons

BUYER'S GUIDE



Standard Equipment

- Air Conditioning — Electronic Touch Climate Control
- Antenna — automatic, power
- Assist Strap — front passenger
- Battery — Delco Freedom II Plus
- Belts — color-coordinated seat and shoulder
- Brakes — four-wheel power disc
- Bumper Guards — front
- Bumper Protective Straps
- Carpeting — front and rear
- Console — operating floor-shift
- Cruise Control — electronic speed control
- Defogger — front, side-window outlets
- Delcotron — heavy-duty 120-amp
- Door Locks — electric
- Drive — front-wheel
- Electronic Warning Tone — seat belt, ignition key and "headlamps on"
- Engine — 3.8-litre with SFI
- Fuel-filler Door — electric remote release
- Glass — Soft-Ray tinted
- Graphic Control Center**† — touch sensitive screen (backlit lettering) includes diagnostic displays, gauges: temperature, voltage, oil pressure and tachometer, electronically controlled A/C, trip monitor, sound system controls, personal code key for recalling individual climate and radio settings and retained accessory power feature
- Headlamps — lungsten halogen
- Heat Ducts — rear-seat ventilation
- Hood Lock — inside release
- Horns — dual
- Ignition — computer-controlled coil
- Instrumentation — electronic digital display, including digital speedometer, fuel gage, trip odometer, clock and low fuel indicator
- Lamp — high-mounted stop
- Lamps — cornering
- License Plate Holder — rear slide-in
- Lights — instrument panel — header reading/courtesy, door courtesy and warning, ashtray, glove box, rear courtesy, trunk and engine compartments
- Mirrors — styled black electric, outside rearview (left and right remote)
- Moldings — wheel opening and belt reveal
- Moldings — rocker panel
- Paint — clearcoat, plastisol protection
- Radio — Delco ETR AM-FM stereo with seek and scan and clock with dual-front and rear extended-range speakers (1)
- Seat — 6-way power (driver)
- Seat — easy-entry, front passenger (Riviera)
- Seats — manual reclining cloth bucket (Riviera)
- Seats — Power Comfort (T Type)
- Steering — power
- Steering Column — tilt

Wheels/

Wheelcovers

1. Deluxe wheelcover
2. 15" aluminum wheel (T Type)
3. 14" aluminum wheel
4. 15" aluminum wheel
5. Wire wheelcover

Steering Wheels

1. Limited wheel
2. Leather-wrapped sport wheel (T Package)
3. Leather-wrapped sport wheel (T Type)
4. Leather-wrapped sport wheel

Radios

See standard and available equipment listings

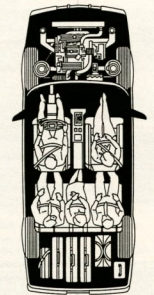
Engine

1. 3.8-litre V-6 with SFI

- Steering Wheel — limited, including cruise control switches (Riviera)
- Steering Wheel — leather-wrapped sport including cruise control switches (T Type)
- Stripes — accent
- Sun Visors — with slide-out extensions
- Suspension — Gran Touring (T Type)
- Suspension — independent 4-wheel
- Suspension — automatic level control
- Tire — compact spare
- Tires — steel-belted, radial-ply, all-season blackwall (P205/75R14) (Riviera)
- Tires — steel-belted, radial-ply, Eagle GT blackwall (P215/60R15) (T Type)
- Transmission — automatic with overdrive
- Trim — deluxe trunk
- Trunk Lock Release — remote-control
- Wheels — 15" aluminum (T Type)
- Wheelcovers — deluxe (Riviera)
- Windows — power
- Wipers — 2-speed with low-speed delay feature

Available Equipment

- Defogger**
- Electric rear-window defogger
- Engines**
- California assembly line emission equipment and testing (required in California)
 - Engine block heater
 - Heavy-duty engine and transmission cooling
- Floor Coverings**
- Reversible anti-slip front carpet savers with inserts
 - Reversible anti-slip rear carpet savers with inserts
 - Trunk compartment mat
- Instrumentation**
- Twilight Sentinel headlamp control
 - Theft-deterrent system with starter interrupt
 - Four-note horn
- Lights**
- Rear-seat reading lamps
 - Illuminated driver door lock and interior light control
- Locks**
- Automatic electric door locks
 - Electric trunk pull-down
- Mirrors**
- Automatic day/night rearview mirror
 - Black electric, outside, rearview mirrors, heated left
 - Lighted visor vanity mirror (passenger)
 - Lighted visor vanity mirror (driver)
- Moldings**
- Color-coordinated, protective, body-side moldings
 - Door-edge guards
- Paint**
- Designers' Accent paint (N/A on Riviera T Type)
- Radios**
- ETR AM-FM stereo with seek and scan, clock and cassette tape with auto-reverse and search/repeat
 - Graphic equalizer, cassette tape and ETR AM stereo™-FM stereo with seek and scan, auto-reverse, search/repeat and clock
 - Delco Bose Music System, cassette tape and ETR AM stereo™-FM stereo with Dolby seek and scan, auto-reverse, search/repeat and clock
 - Concert Sound II (6)-speaker system
 - Astroroo™ — Electric sliding — Gray Seats
 - Electric seatback recliner — driver
 - Electric seatback recliner — passenger
 - 6-way power — passenger
- Special Equipment**
- Front license plate mounting
 - Trailer towing harness
 - Cellular telephone accommodation package (Tri-band power antenna, wiring harness and hand-set storage) (available after Oct '86)



Steering Wheel

- Leather-wrapped sport steering wheel and shift handle

Suspension

- Gran Touring suspension

Tire

- Steel-belted, radial-ply whitewall (P205/75R14)

Touring Option

- T Package

Wheels and Wheelcovers

- 14" aluminum wheels (4)
- Custom locking wire wheelcovers

Wipers

- Windshield washer fluid indicator

N/A — not available

*Receives C-Quam™ AM stereo broadcasts. Most AM stereo stations across the country broadcast in C-Quam™ but some do not. Check with your local stations for compatibility in your area.

†"GCC" and "Graphic Control Center" are used under Trade Mark License from Graphic Control Corp., Buffalo, N.Y.

▼ Seating in the Electra and Park Avenue is not only available in a selection of fabrics, but can be configured to suit the owner's preference.



► The Electra and Park Avenue, combining classic luxury with front-wheel drive, represent the ultimate expression of the six-passenger Buick.



Buick Electra Limited/Park Avenue

With good reason, the Electra, Electra T Type and Park Avenue are considered to be the ultimate expression of the six-passenger Buick. These Buicks epitomize the attention to luxury values that have, for more than 80 years, set the Buick name—and the cars that proudly bear it—apart. Automobiles representative of all these qualities that make a Buick a Buick.

Electra/Park Avenue

The Electra/Park Avenue for 1987 is nothing less than the finest six-passenger luxury car that we at Buick can offer the buyer. The Park Avenue is at once our benchmark and our hallmark, embodying as it does all those qualities that for so long have made the name Buick among the proudest in the automotive world.

Both the Park Avenue and the Electra Limited are built and equipped with state-of-the-art technology. The new-generation Electra maintains the Buick traditions of luxury and pride of ownership.

The standard powertrain is a 3.8-litre V-6 with sequential-port fuel injection, improved for 1987 by the addition of roller valve lifters for quiet, efficient operation. This powerful engine is mated to a four-speed automatic transmission with over-drive, a combination that delivers the smooth, swift performance expected from a thoroughbred.

Electra Touring Options

For the special driver who yearns for a more performance-oriented Buick, we suggest the Electra T Type, a car completely equipped for serious drivers. The T Type includes the firm Gran Touring suspension, a leather-wrapped steering wheel, operating console, 45/45 seats and aluminum wheels with Eagle/GT radials. The Electra and Park Avenue offer a Touring Option package that merits consideration: the T Package, based on the Gran Touring suspension. We invite you to scrutinize the full contents of these packages in the accompanying Buyer's Guide pages.

Electra Interiors

The interior of every Electra benefits from lavish attention in design and quality. Only the finest fabrics and quality leathers for seating areas are selected by Buick for availability in the Limited and Park Avenue.

Inside the Park Avenue, wide, full-size seating for six adults adds spacious comfort to an already elegant environment. The rich velvet upholstery is available in a choice of six fashionable colors and the supple leather (in seating areas) interiors are also available in a choice of hue. Underfoot are color-coordinated cut-pile carpets, front and rear.

The standard equipment list for 1987, as Park Avenue owners have come to expect, is exceptionally well-thought-out and thorough. From 6-way power seats to electronic cruise control to electric door locks and remote-operation trunk lid and fuel-filler door, the Electra Park Avenue is in every way a complete car. Air conditioning and Soft-Ray tinted glass are included, as are such thoughtful standard touches as lighted passenger visor vanity mirrors, rear-seat reading lamps and power windows.

The Park Avenue buyer demands an extensive list of available equipment that may be used to enhance the considerable convenience already in place. The Delco Bose sound system, quartz analog instrument cluster and a factory-installed cellular telephone wiring harness available for 1987—exemplify the depth of choice available to Electra owners.

Anti-lock Brake System

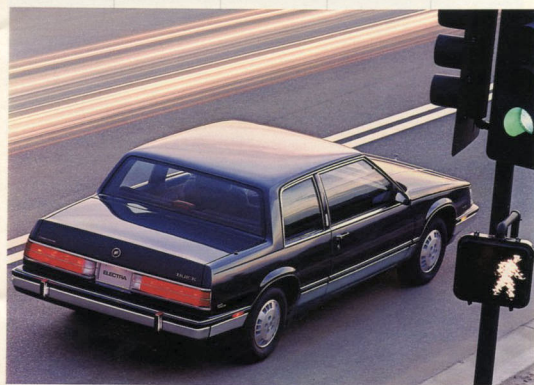
Buick's remarkable electronic anti-lock brake system is available on all Electras. This system senses brake application and road conditions at each wheel and allows the driver to stop without loss of steering control—even when two wheels are on ice and two on dry pavement.

Equipped to your tastes, the Buick Park Avenue, in sedan and coupe versions, Electra T Type, and the Electra Limited Sedan, stand proudly as representatives of the Buick experience, yet each can represent a highly individualized approach to motoring—from unrestrained luxury to grand touring excitement.



◀ The Buick Electra Limited Sedan, luxury and electronic sophistication powered by the smooth 3.8-litre engine with sequential-port fuel injection.

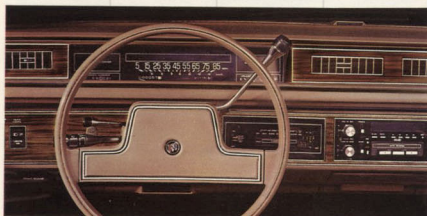
► A truly luxurious automobile does not necessarily require four doors. As proof of this, Buick offers the Park Avenue Coupe.



► The Electra is available in a T Type configuration for the driver who prefers the modern look and feel of a great grand touring automobile.



◀ The interior of the Electra and Park Avenue provides a wide selection of controls and information sources.



Models

Electra Limited		Sedan X69
Park Avenue	Coupe W11	Sedan W69
Electra T Type		Sedan F69

Special Model and Option Package

Electra T Type Sedan — Includes: 3.8-litre SFI V-6 automatic transmission with overdrive, steel-belted, radial-ply, Eagle GT blackwall tires (P215/65R15), 15" aluminum wheels, leather-wrapped sport steering wheel, gray, red or beige cloth 45/45 seats, rear-seat headrests, optional console with leather shift handle, quartz analog gage cluster, brushed gray instrument panel and door trim, specific front carpet savers with embroidered T Type logo, dual-outlet exhaust, special tail lamp treatment and Gran Touring suspension. Available in five exterior colors.

T Package — Includes: Gran Touring suspension; 2.97 tonxale rack; 15" aluminum wheels; steel-belted, radial-ply Eagle GT blackwall tires (P215/65R15); T ornamentation; leather-wrapped sport steering wheel.

Powertrain

Engine	Transmission
Electra Limited/Park Avenue	
3.8-litre V-6 with Sequential-port Fuel Injection (Standard)	Automatic (standard)
Electra T Type	
3.8-litre V-6 with Sequential-port Fuel Injection (standard)	Automatic with Overdrive (standard)

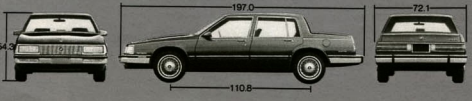
Refer to the EPA mileage estimate and engine supplement chart included with this catalog.

Exterior Colors

White	Medium Blue Firemist	
Dark Gray Metallic	Black	
Light Blue Metallic	Dark Blue Metallic	
Dark Teal Metallic	Tan	
Light Brown Metallic	Teal Firemist	
Dark Brown Firemist	Dark Red Metallic	
Silver Metallic		
Vinyl Top Colors		
White	Black	Tan
Dark Teal	Red	
Dark Blue	Dark Gray	

Dimensions

Inches unless otherwise noted	Park Avenue Coupe	Limited, Park Avenue, T Type Sedans
Overall		
Length	197.0	197.0
Width	72.1	72.1
Height	54.3	54.3
Wheelbase	110.8	110.8
Front Tread	60.3	60.3
Rear Tread	59.8	59.8
Interior Front		
Legroom	42.4	42.4
Headroom	39.3	39.3
Shoulder Room	58.9	58.9
Hip Room	55.5	55.5
Interior Rear		
Legroom	41.5	41.5
Headroom	38.2	38.2
Shoulder Room	57.6	58.8
Hip Room	54.0	54.8
Trunk Volume	16.4 cu. ft.	16.4 cu. ft.
Fuel Tank Capacity	18.0 gallons	18.0 gallons



Standard Equipment

- Air Conditioning
- Antenna — fixed-mast
- Battery — Delco-Ford II Plus
- Belts and Buckles — color-coordinated seat and shoulder
- Brakes — power front disc/rear drum
- Bumper Guards — rear (Park Avenue)
- Bumper Protective Strips — front and rear
- Carpet Savers with Inserts — front and rear (Park Avenue)
- Carpeting — cut-pile (Limited)
- Carpentry — plush (Park Avenue)
- Chassis Springs — computer-selected
- Console — operating (T Type)
- Defogger — front, side-window outlets
- Door Locks — electric (Park Avenue)
- Drive — front-wheel
- Electronic Warning Tone — seat belt, ignition key and "headlamps on"
- Electronic Cruise Control (Park Avenue)
- Engine — 3.8-litre SFI
- Fuel-filler Door — electric release
- Glass — Self-Ray limited
- Hanger — retractable coat (Park Avenue)
- Headlamps — composite Tungsten-halogen
- Headrests — rear-seat (T Type)
- Hood — front-hinged
- Hood Lock — inside release
- Hood Ornament
- Horns — dual
- Ignition — computer-controlled coil
- Lamp — high-mounted stop
- Lamps — rear-hinged
- Lamps — rear-seat reading (Park Avenue)
- Lamps — electroluminescent coach (Park Avenue)
- Lighter — rear-seat (Park Avenue)
- Lights — instrument panel courtesy, header courtesy/reading, front ashtray, glove box, trunk and engine compartments
- Lights — door courtesy and warning (Park Avenue)
- License Plate Holder — rear side-in
- Mirror — lighted visor vanity (passenger) (Park Avenue)
- Mirrors — styled body-color, outside, rearview (left remote, right manual) (Limited)
- Mirrors — styled body-color, electric outside, rearview (left and right remote) (Park Avenue)
- Moldings — lower, body-side (black with bright bead)
- Moldings — wide lower, body-side (Park Avenue)
- Moldings — bright wheel opening, belt reveal
- Moldings — roof drip rail and front- and rear-door frames
- Multi-function Control Lever — turn signal, headlamp high/low beam and

Wheels/

Wheelcovers

1. Electro wheelcover
2. Park Avenue wheelcover
3. 14" aluminum wheel
4. 15" aluminum wheel
5. Wire wheelcover

Steering Wheels

1. Limited steering wheel
2. Leather-wrapped sport wheel
3. Leather-wrapped sport wheel (T Type)
4. Tilt and telescoping steering wheel

Radios

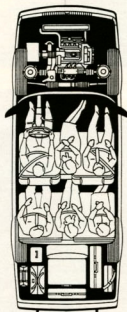
- See standard and available equipment listings
- Engine**
1. 3.8-litre V-6 with SFI

windshield wiper/washer controls (includes cruise control on Park Avenue)

- Paint — clearcoat, Plastisol protection
- Radio — Delco ETR AM-FM stereo with seek and scan, clock and extended-range speakers (radio may be deleted for credit!) (1)
- Seat — 6-way power (driver)
- Seats — Limited level cloth 55/45 notchback (Limited)
- Seats — Park Avenue level cloth 55/45 notchback (Park Avenue)
- Seats — cloth 45/45 (T Type)
- Steering — power (rack and pinion)
- Steering Column — tilt (Park Avenue)
- Stripes — accent painted (Park Avenue)
- Sun Visors — with slide-out extensions (Park Avenue)
- Suspension — front independent MacPherson strut
- Suspension — rear independent
- Suspension — automatic level control
- Tire — compact spare
- Tires — steel-belted, radial-ply, all-season blackwall (P205/75R14) (Limited)
- Tires — steel-belted, radial-ply, Eagle GT blackwall (P215/65R15) (T Type)
- Transmission — automatic with overdrive
- Trip Odometer
- Trunk Lock Release — remote-control (Park Avenue)
- Trunk Trim — full
- Wheels — 15" aluminum (T Type)
- Wheelcovers — Electro
- Wheelcovers — Park Avenue
- Windows — power
- Wipers — 2-speed (Limited)
- Wipers — 2-speed with delay feature (Park Avenue)

Available Equipment

- Air Conditioning**
- Electronic Touch Climate Control air conditioner
- Axle**
- 2.53 axle ratio
- Battery**
- Heavy-duty battery
- Cruise Control**
- Electronic cruise control (std. on Park Avenue)
- Defogger**
- Electric rear-window defogger
- Engines**
- California assembly line emission equipment and testing (required in California)
 - Engine block heater
 - Heavy-duty engine and transmission cooling
- Floor Coverings**
- Front carpet savers with inserts (std. on Park Avenue)
 - Rear carpet savers with inserts (std. on Park Avenue)
 - Trunk compartment mat
 - Deluxe trunk trim
- Instrumentation**
- Theft-deterrent system with starter interrupt
 - Four-note horn
 - Quartz analog gage cluster (volumeter, trip odometer, oil and temperature gage and tachometer)
 - Quartz analog gage cluster (tachometer, volumeter, oil and temperature gage)
 - Trunk Trim — full
 - Wheels — 15" aluminum (T Type)
 - Wheelcovers — Electro
 - Wheelcovers — Park Avenue
 - Windows — power
 - Wipers — 2-speed (Limited)
 - Wipers — 2-speed with delay feature (Park Avenue)
- Lights**
- Door courtesy and warning lights (std. on Park Avenue)
 - Rear-seat reading lamps
 - Rear-seat reading lamps (std. on Park Avenue)
 - Illuminated driver door lock and interior light control
 - Twilight Sentinel headlamp control
 - Cornering lamps
- Locks**
- Electric door locks (std. on Park Avenue)
 - Automatic electric door locks
 - Keyless entry system
 - Remote electric trunk lock release (std. on Park Avenue)
 - Electric trunk pull-down
- Mirrors**
- Automatic day/night mirror
 - Electric body-color outside, rearview mirrors (left and right remote) (std. on Park Avenue)
 - Electric, body-color outside, rearview mirrors (left heated) (left and right remote)
 - Lighted visor vanity mirror (passenger) (std. on Park Avenue)
 - Lighted visor vanity mirror (driver)
- Moldings**
- Bright door-edge guards



std. — standard

Radios

- Fixed-mast antenna standard unless power antenna ordered
- Cassette tape and ETR AM-FM stereo with seek and scan, auto reverse and clock (2)
 - Graphic equalizer, cassette tape and ETR AM stereo™ — FM stereo with seek and scan, auto reverse with search/repeat and clock (3)
 - Delco Bose Music System with cassette tape, ETR AM stereo™ — FM stereo, Dolby seek and scan, auto reverse, search/repeat and clock (4)
 - Radio delete (front speakers not deleted)
 - Concert Sound II (6)-speaker system
 - Automatic power antenna
 - Graphite power antenna base
- Roofs**
- Astrorack-Electric sliding
 - Full heavily padded vinyl top
- Seats**
- Electric seatback recliner (driver)
 - Electric seatback recliner (passenger)
 - 6-way power seat (std. on Park Avenue)
 - Two-position memory, 6-way power seat (driver)
- Special Equipment**
- Luggage rack — black (T Type)
 - Luggage rack — bright (Limited, Park Avenue)
 - Front license plate mounting
 - Anti-lock brake system
 - Cellular telephone accommodation package
- Steering Wheels**
- Tilt steering column (std. on Park Avenue)
 - Tilt and telescoping steering column
 - Stripes (stripes should match top or interior trim color when ever possible)
- Suspensions**
- Heavy-duty suspension
 - Gran Touring suspension
- Tires**
- Steel-belted, radial-ply, all-season, whitewall tires (P205/75R14) (std. on Park Avenue)
 - Steel-belted, radial-ply blackwall tires (P205/75R14) (std. on Electro)
 - Steel-belted, radial-ply, Eagle GT whitestripe tires (P215/65R15)
 - Self-sealing tires
- Touring Option**
- T Package
- Wheels and Wheelcovers**
- 14" aluminum wheels (4)
 - Custom locking wire wheelcovers
- Wipers**
- Low windshield washer fluid indicator, 2-speed windshield wiper with low-speed delay feature (std. on Park Avenue)
- *Receives C-Quam™ AM stereo broadcasts. Most AM stereo stations across the country broadcast in C-Quam™ but some do not. Check with your local stations for compatibility in your area.

▶ The 1987 LeSabre combines traditional six-passenger luxury and comfort values in an all-modern, front-wheel-drive automobile.



▼ All LeSabre seating, including the popular 45/45 seats and spacious front bench seats, benefits from full-foam cushioning.



▼ The most exciting LeSabre ever, the LeSabre T Type Coupe. With 3.8-litre power and Gran Touring suspension, the T Type is every inch a driver's car.

The New-generation LeSabre

The 1987 Buick LeSabre exemplifies the excellence of engineering. Such features as front-wheel drive, transverse-mounted 3.8-litre engine and aerodynamic styling characterize a line of automobiles for those who prize traditional value and comfort in a powerful, spacious road car. Like its predecessors, the 1987 LeSabre serves with equal facility as family transportation, as a personal car, or as an automobile suitable for business. The LeSabre is available as a coupe or sedan in three series, LeSabre, LeSabre Custom and the luxurious LeSabre Limited. A new specialty version – the LeSabre T Type Coupe – is new for 1987.

Forward-looking Design

Continuing leadership in the building of trimmer, more purposeful automobiles, the 1987 LeSabres have a restyled front end which incorporates the more aerodynamic composite headlamp design.

The suspension design on LeSabre incorporates a MacPherson strut front suspension and a fully independent rear suspension with coil springs. This advanced design allows the car to take even sub-standard road surfaces in its stride.

The Enthusiast's LeSabre

The LeSabre T Type Coupe ranks as the most exciting new LeSabre ever. With its blackout trim treatment, firm Gran Touring suspension, 3.8 litres of power and a host of performance accoutrements including leather-wrapped steering wheel, an operating console, 45/45 seats, big Eagle GT blackwalls and aluminum alloy wheels, the LeSabre T Type, as they say, makes a statement: This car was made for driving.

Fuel-injected Power

The standard power unit for LeSabre is the 3.8-litre V-6. This engine, with sequential-port fuel injection for responsiveness, and with roller valve lifters for quiet operation drives through a smooth-running four-speed automatic transmission with overdrive. The V-6 engine is smaller, lighter and more economical than traditional V-8 engines, yet it delivers surprising performance and excellent drivability. This torque and horsepower are made possible by continuing engine development

programs and by such applied advances as sequential-port fuel injection, roller valve lifters, and computer-controlled cap ignition (C³I).

Inside the LeSabre

The luxury of LeSabre interiors leaves no question in the driver's mind that this is a substantial car in the Buick tradition. LeSabre Custom models have notchback seating covered in velour cloth, while the Limited series provides plush, reclining 55/45 loose-pillow velour seats. The LeSabre series sedan has a bench seat while the coupe features a notchback bench seat.

Beginning with the start of the 1987 model year, LeSabre Coupes will be equipped with an automatic safety belt system (see page 23). LeSabre Sedans will also feature the innovative system after December, 1986.

LeSabre offers a generous selection of standard equipment, including air conditioning, tinted glass, all-season steel-belted radial tires, and handsome, luxurious interiors. One reading of the standard equipment list will tell you why LeSabre owns the reputation of offering an impressive value for the investment.

In keeping with the LeSabre tradition of true luxury motoring, the available equipment list is comprehensive. There's the Delco Bose Music System and the Concert Sound II speaker system, a new instrument gage package, and electronic anti-lock brakes. Manual seatback recliners for the driver and passenger seats – standard on the Limited – are also available.

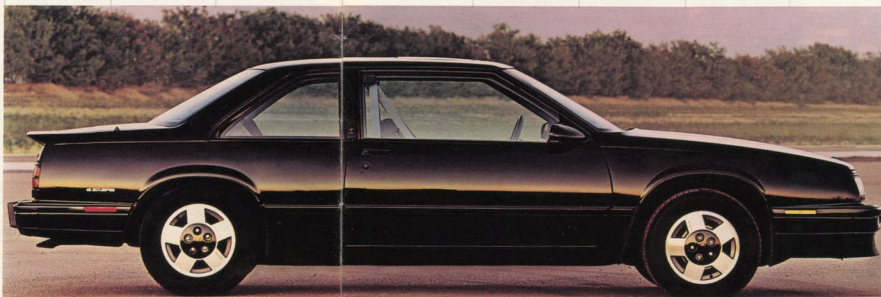
Touring Option

New for 1987 is a selection from the option list that will transform any LeSabre into a car suited to the driver who enjoys performance coupled with a firm suspension system. This is the T Package, which includes the Gran Touring suspension, a leather-wrapped steering wheel, aluminum wheels and Eagle GT tires. See the Buyer's Guide in this section for details.

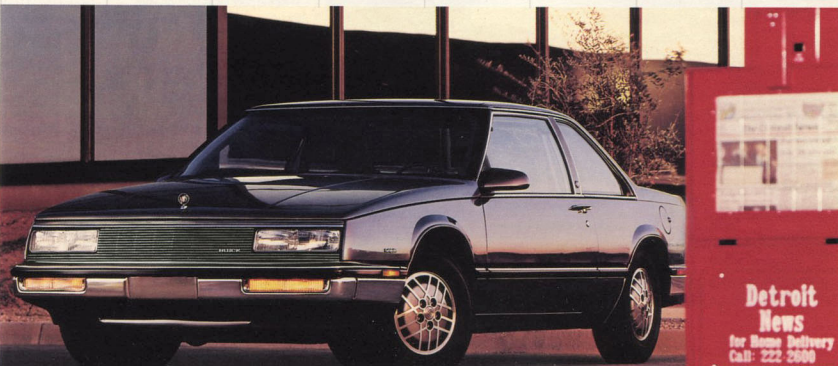
LeSabre's three series for 1987 continue to demonstrate Buick's commitment to traditional value combined with advanced technology, aerodynamic styling, and dependable performance.



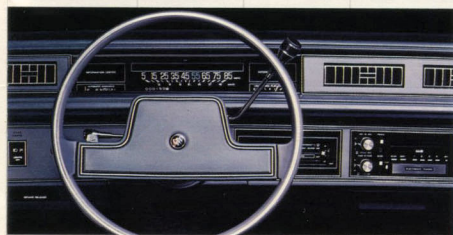
◀ The wide choice of models available to LeSabre buyers offers exceptional value for the money. LeSabre Coupe represents an outstanding investment.



▶ The LeSabre Custom Coupe exemplifies the functional beauty that can result from aerodynamically inspired exterior design.



◀ The LeSabre Limited as seen by its driver. Within reach are such available options as a Delco Bose Music System.



Models

LeSabre	Coupe H37	Sedan H69
LeSabre Custom	Coupe P37	Sedan P69
LeSabre Limited	Coupe R37	Sedan R69

Special Option Packages

LeSabre T Type—Includes: special 15" aluminum wheels, P215/65R15 Eagle GT blackwall tires, Gran Touring suspension, 2.97 ratio transaxle, leather-wrapped sport steering wheel and shift handle, red and amber tail lamps; dual exhaust outlets; black body-side molding treatment; lay-down hood ornament; gray/black 45/45 seats (required); front floor mats with "power-6" logo; T Type Identification, blackout trim, tail lamp, door handles and lock cylinders and grille; rear deck lid spoiler, front or dam, ETR AM-FM stereo radio with graphic equalizer, cassette tape and red backlighting; operating console with red backlighting; blocked-out instrument panel controls; special gage package with red backlighting. Available in 4 exterior colors

T Package—Includes: Gran Touring suspension; 2.97 ratio transaxle; 15" aluminum wheels; P215/65R15 Eagle GT blackwall tires; leather-wrapped sport steering wheel; T ornamentation.

Powertrain

Engine	Transmission
3.8-litre V-6 with Sequential-port Fuel Injection (standard)	Automatic with Overdrive (standard)

Refer to the EPA mileage estimate and engine supplement chart included with this catalog

Exterior Colors

White	Silver Metallic
Dark Gray Metallic	Black
Light Blue Metallic	Dark Blue Metallic
Dark Teal Metallic	Tan
Light Brown Metallic	Red Metallic
Dark Red Metallic	Light Teal Metallic

Vinyl Top Colors

White	Black
Dark Teal	Tan
Dark Blue	Dark Gray

Dimensions

Inches unless otherwise noted	LeSabre, Custom, Limited Coupes	LeSabre, Custom, Limited Sedans
Overall		
Length	196.2	196.2
Width	72.1	72.1
Height	54.7	55.5
Wheelbase	110.8	110.8
Front Tread	60.3	60.3
Rear Tread	59.8	59.8
Interior Front		
Lagroom	42.4	42.4
Headroom	38.1	38.9
Shoulder Room	59.4	59.1
Hip Room	52.9	52.9
Interior Rear		
Lagroom	37.4	38.7
Headroom	37.6	38.3
Shoulder Room	57.8	59.5
Hip Room	54.5	56.1
Trunk Volume	15.7 cu. ft.	16.4 cu. ft.
Fuel Tank Capacity	18.0 gallons	18.0 gallons

BUYER'S GUIDE



Standard Equipment

- Air Conditioning
- Antenna—fixed-mast
- Batteries—Delco Freedom II Plus
- Belts—low-drag power front disc/rear drum
- Bumper Guards-rear (Limited)
- Bumper Protective Strips—front and rear
- Carpeting—cut-pile
- Chassis Springs—computer selected
- Defogger—front, side-window outlets
- Drive—front-wheel
- Electronic Warning Tone—seat belt, ignition key and "headlamps on"
- Engine—3.8-litre with SPI
- Glass—Soft-Ray tinted
- Headlamps—composite tungsten halogen one piece glass design with replaceable bulbs
- Headrests—adjustable front-seat
- Hood—front hinged
- Hood Lock—inside release
- Horns—dual
- Ignition—computer-controlled coil
- Lamp—high-mounted stop
- License Plate Holder—rear slide-in
- Lights—front- or rear-door-operated dome, instrument panel courtesy, front ashtray, glove box and trunk and engine compartments (Custom/Limited)
- Mirror—styled body-color, outside, rearview (left remote) (LeSabre)
- Mirrors—styled body-color, outside, rearview (left remote and right manual) (Custom/Limited)
- Molding—bright center pillar applique (Limited)
- Moldings—wheel opening, belt reveal and front- and rear-door
- Moldings—bright roof drip
- Moldings—lower body-side (black) (Limited)
- Multi—function Control Lever-turn signal, headlamp high/low beam and windshield wiper/washer controls

Wheels/

Wheelcovers

1. Deluxe wheelcover

2. 14" aluminum wheel

3. 15" aluminum wheel

4. Aluminum wheel (T Type)

5. Styled hubcap with trim ring

6. Wire wheelcover

Steering Wheels

1. Custom wheel

2. Limited wheel

3. Sport wheel

4. Leather-wrapped sport wheel (T Type)

5. Leather-wrapped sport wheel

6. Wire wheelcover

Radios

See standard and available

equipment listings

Engine

1. 3.8-litre V-6

with SPI

Available Equipment

- Radio delete (front speakers not deleted)
- Concert Sound II (6)-speaker system
- Automatic power antenna
- Black power antenna base
- Rails**
- Flip-open, Vista-Vent removable glass sunroof
- Full vinyl top (Sedans)
- Seats**
- Manual seatback recliner (passenger) (std. on Limited)
- Manual seatback recliner (driver)
- Electric seatback recliner (passenger)
- 6-way power seat (driver)
- 6-way power seat (passenger)
- Special Equipment**
- Luggage rack—bright
- Front license plate mounting
- Anti-lock brake system

Defogger

Engines

- California assembly line emission equipment and testing (required in California)
- Engine block heater
- Heavy-duty battery
- Heavy-duty engine and transmission cooling

Floor Coverings

- Front carpet covers with inserts
- Rear carpet covers with inserts
- Deluxe trunk trim (Custom/Limited)

Instrumentation

- Quartz analog gage cluster (trip odometer, tachometer, voltmeter, oil gage and temperature gage)
- Quartz analog gage cluster (tachometer, voltmeter, oil and temperature gage)
- Trip odometer
- Low fuel indicator
- Electronic digital instrumentation

Lights

- Front- and rear-seat reading and courtesy lamps
- Front-door courtesy and warning lights

Locks

- Electric door locks
- Remote electric trunk lock release

Mirrors

- Electric body-color, outside, rearview mirrors (left and right remote)
- Lighted visor vanity mirror (passenger)

Moldings

- Black, protective, lower body-side (std. on Limited)
- Bright door-edge guards
- Rear bumper guards and bright bumper bead

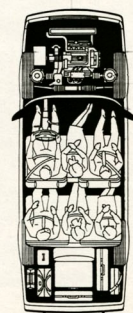
Paint

- Designers' Accent paint

Radios

- Fixed-mast antenna standard unless power antenna ordered
- ETR AM-FM stereo with seek and scan and clock (2)
- Cassette tape and ETR AM-FM stereo with seek and scan, auto reverse and clock (3)
- Graphic equalizer, cassette tape and ETR AM stereo *FM stereo with seek and scan, auto reverse with search/repeat and clock (4)
- Delco Bose Music System with ETR AM stereo *FM stereo, Dolby, seek and scan, cassette tape with auto reverse, search/repeat and clock (5)

LeSabre



*Receives C-Quam® AM stereo broadcasts. Most AM stereo stations across the country broadcast in C-Quam® but some do not. Check with your local stations for compatibility in your area.

► The Regal Limited Coupe represents traditional values and modern technology in personal transportation.



▼ Controls and instruments favored by the active driver, plus outstanding sound systems, are available for the Regal's control center.

▼ The Regal interior can be arranged to accommodate five or six passengers in luxurious comfort.



Buick Regal



Once seen, the stylish, formal look of a Regal—with its classic, yet aerodynamic lines—is not soon forgotten. A look beneath the surface of that clean, crisp exterior reveals an interior that is nothing short of regal—luxurious, comfortable and well appointed. Look still deeper and you will find that the Regal offers time-tested mechanical components that rank with the best: rear-wheel drive, with the smoothness of available V-8 power up front.

The Turbo Package also includes a 3.42 axle ratio and the distinctive turbo hood treatment. Consult the Buyer's Guide in this section.

Regal and Regal Limited Coupes

In addition to the smooth operating 3.8-litre V-6 with automatic transmission, standard on Regal, buyers with an affinity for V-8 power can select the available drivetrain combination of a strong, smooth-running 5.0-litre V-8 and automatic overdrive transmission, a match-up favored by many Regal owners.

All Regals have power steering and power-assisted low-drag front disc/rear drum brakes for positive steering and stopping. Computer-selected springs for the coil spring suspension bring outstanding ride and handling to the combination.

Regal Coupes have a number of tasteful touches applied to an already pleasing interior, including shagreen trim applied to the instrument panel, available console, doors and steering wheel.

Regal Interiors

The Regal and Regal Limited offer a comfortable, luxurious interior with a standard notchback bench seat or 55/45 notchback seats, respectively, or available bucket seats or 45/55 seats. A broad range of colors and materials widens the interior choices.

The Regal's already high standard of luxury can be enhanced from a long list of available comfort and convenience features. Air conditioning, electronic digital instrumentation, electronic cruise control and six-way power seats are just a few of the items available.

The Buick Regal is a meticulously crafted, generously sized personal automobile. An automobile that rides, performs, and handles with all the qualities of grace and elegance that have traditionally characterized the Regal.

Regal Powertrain

The Buick Regal, in standard form, is powered by a 3.8-litre engine. For drivers who want an even more responsive engine, we recommend the available Turbo Package, which adds turbocharging and intercooling to the 3.8-litre V-6 with sequential-port fuel injection, raising the output to uncommonly rewarding levels.

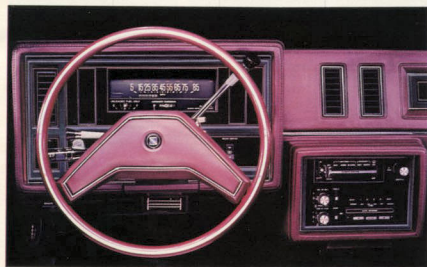
Engineers joined Bosch of Germany in developing the SFI system, which injects a precisely timed and metered amount of fuel directly into each

▼ From any angle, the Regal Coupe is good-looking. Underneath, the available turbocharged engine awaits the driver's command.

► The Regal Grand National. Its muscular 3.8-litre turbo engine and Gran Touring suspension have redefined the high-performance Coupe.



► The classic lines of the Regal can be enhanced with classic performance. A firmer suspension and turbocharging are but two of the Touring Options.



By specifying the T Package and the Exterior Sport Package, any Regal Coupe can also take on a performance personality. An exterior nearly devoid of chrome, with four handsome aluminum alloy wheels and P215/65R15 steel-belted Eagle GT blackwells will draw admiring looks. Underneath, a firm-ride Gran Touring suspension delivers competition-inspired ride and handling, controlled by a leather-wrapped steering wheel. The result is a car that can cope with anything the road places in its path. Surely, quickly, and with a generous dash of style.



Models

Regal	Coupe J47
Regal Limited	Coupe M47

Special Option Packages

T Package—Includes: T ornamentation; Gran Touring suspension; fast ratio power steering; gas shock absorbers; 15" aluminum wheels; steel-belted, radial-ply, Eagle GT blackwall tires (P215/65R15); leather-wrapped sport steering wheel.

Turbo Package—Includes: 3.8-litre SFI turbo engine with intercooler, instrument panel cluster with tachometer, turbo boost gage and trip odometer; turbo hood and ornamentation; acoustical insulation package; 3.42 axle ratio.

Exterior Sport Package—Includes: Blackout treatment on door locks and handles; grille; headlamp/fail lamp bezels; antenna and door edge guards; plus the following moldings: roof drip and window trim, side window reveal, wheel opening, belt reveal, windshield reveal and rear window (rocker panel) and body-side moldings are deleted.

Regal Grand National—Includes: 3.8-litre turbo engine with intercooler, automatic transmission with overdrive, 3.42 axle ratio; Gran Touring suspension; fast-ratio power steering; sport mirrors; turbo boost gage and tachometer; trip odometer; leather-wrapped sport steering wheel; air conditioning; P215/65R15 Eagle GT blackwall tires; chrome-plated steel wheels; black bumpers, moldings; grille and exterior trim; deck lid spoiler; full-length operating console and reclining front bucket seats.

Powertrains

Engine	Transmission
3.8-litre V-6 2-bbl. (standard)	Automatic (standard)
5.0-litre V-8 4-bbl. (available)	Automatic (available)
	Automatic with Overdrive (available)
3.8-litre V-6 Turbo with Sequential-port Fuel Injection and Intercooler (available)	Automatic with Overdrive (available)

Refer to the EPA mileage estimate and engine supplement chart included with this catalog.

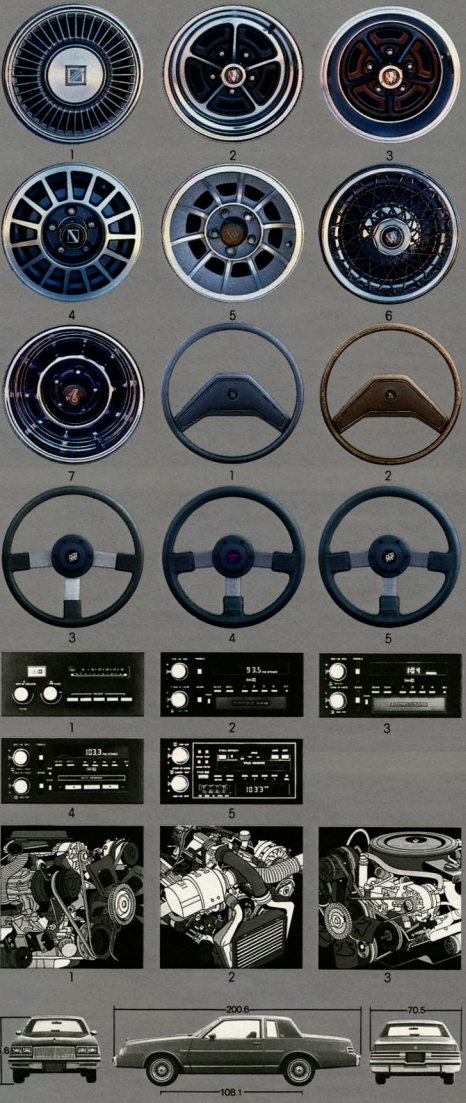
Exterior Colors

White	Cream Beige
Silver Metallic	Light Brown Metallic
Gray Metallic	Brown Metallic
Black	Rosewood Metallic
Light Blue Metallic	Dark Red Metallic
Dark Blue Metallic	Light Sage Metallic

Vinyl Top Colors		
White	Light Sage	Dark Red
Dark Gray	Black	
Dark Blue	Tan	

Dimensions

Inches unless otherwise noted	Regal, Limited	Coupe
Overall		
Length	200.6	
Width	70.5	
Height	54.6	
Wheelbase	108.1	
Front Tread	58.5	
Rear Tread	57.7	
Interior Front		
Legroom	42.8	
Headroom	37.9	
Shoulder Room	56.9	
Hip Room	51.7	
Interior Rear		
Legroom	36.3	
Headroom	38.1	
Shoulder Room	56.1	
Hip Room	54.9	
Trunk Volume	16.2 cu. ft.	
Fuel Tank Capacity	18.1 gallons	



Wheels/

Wheelcovers

- Deluxe wheelcover
- Chrome-plated wheel
- Color-keyed wheel
- 14" aluminum wheel
- 15" aluminum wheel
- Wire wheelcover (Grand National)
- Chrome-plated wheel

Steering Wheels

- Custom wheel
- Limited wheel
- Sport wheel
- Leather-wrapped sport wheel
- Leather-wrapped sport wheel (Grand National)

Radios

See standard and available equipment listings

Engines

- 3.8-litre 2-bbl. V-6
- 3.8-litre SFI Turbo V-6 with intercooler
- 5.0-litre V-8

Standard Equipment

- Antenna—fixed-mast
 - Battery—Delco Freedom II Plus
 - Bells and Buckles—color-coordinated seat and shoulder
 - Brakes—low drag power disc/rear drum
 - Bumper Protective Strips—front and rear
 - Bumper Guards—front and rear
 - Carpeting—cut-pile
 - Chassis Springs—computer-selected
 - Electronic Warning Tone—seat belt and ignition key
 - Engine—3.8-litre 2-bbl. V-6
 - Frame—full-perimeter
 - Glove Compartment Lock
 - Headrests—adjustable front-seat
 - Hood Lock—inside release
 - Horns—dual
 - Lamp—high-mounted stop
 - Lights—instrument panel courtesy, door-operated dome, front ashtray, glove box, and trunk and engine compartments
 - Mirrors—chrome, outside rearview, left and right manual
 - Moldings—color-coordinated, protective, body-side
 - Moldings—narrow rocker panel (Regal)
 - Moldings—belt reveal and wide rocker panel (Limited)
 - Moldings—roof drip, rear quarter window and front and rear wheel opening
 - Moldings—bright windshield and back window
 - Moldings—deck lid and door frame
 - Multi-function Control Lever—turn signal, headlamp high/low beam and windshield wiper/washer controls
 - Paint—Plastisol protection
 - Radio—Delco push-button AM with dual front speakers (radio may be deleted for credit) (1)
 - Seat—cloth notchback bench (Limited)
 - Seats—cloth 55/45 notchback (Limited)
 - Seats—cloth reclining buckets (Grand National)
 - Steering—power
 - Steering Wheel—custom (Regal)
 - Steering Wheel—limited (Limited)
 - Suspension—coil-spring, front and rear
 - Tire—compact spare
 - Tires—steel-belted, radial-ply, all-season whitewall (P195/75R14)
 - Transmission—automatic
 - Wheelcovers—deluxe
 - Wipers—2-speed
- *Receives C-Quam™ AM stereo broadcasts. Most AM stereo stations across the country broadcast in C-Quam™ but some do not. Check with your local stations for compatibility in your area.



Available Equipment

Air Conditioning

Air conditioner

Axles

- 2.56 axle ratio
- 3.08 axle ratio
- 3.23 axle ratio

Battery

Heavy-duty battery

Cruise Control

Electronic cruise control

Defogger

Electric rear-window defogger

Engines

- 5.0-litre 4bbl V-8 engine
- Turbo Package: 3.8-litre SFI turbocharged V-6 engine with intercooler
- California assembly line emission equipment and testing (required in California)
- Engine block heater
- 94-amp Delcotron
- 85-amp Delcotron
- Heavy-duty engine and transmission cooling

Floor Coverings

- Front carpet savers
- Rear carpet savers
- Front carpet savers with inserts
- Rear carpet savers with inserts
- Trunk trim covering

Glass

- Soft-Ray tinted glass
- Soft-Ray tinted windshield

Instrumentation

- "Headlamps on" warning chime
- Twilight Sentinel headlamp control
- Theft-deterrent system with starter interrupt
- Trip odometer
- Electronic digital instrumentation

Lights

- Front-door courtesy and warning lights (Limited)
- Coach lamps (Limited)
- Front-seat reading lamps
- Tungsten-halogen headlamps
- Cornering lamps

Locks

- Electric door locks
- Remote electric trunk lock release

Mirrors

- Body-colored sport remote-control outside mirrors (left remote, right manual)
- Body-color sport remote-control outside mirrors (left and right remote)
- Visor vanity mirror (passenger)
- Lighted visor vanity mirror (passenger)

Moldings

- Door-edge guards (black)
- Door-edge guards (bright)
- Exterior molding package includes wide rocker panel and belt reveal (std. on Limited)

Paint

Designers' Accent paint

Radios

- Fixed-mast antenna standard unless power antenna ordered
- ETR-AM-FM stereo with seek and scan (2)
 - ETR-AM-FM stereo with seek and scan and clock (3)
 - Cassette tape and ETR-AM-FM stereo with seek and scan; auto reverse and clock (4)
 - Graphic equalizer, cassette tape and ETR-AM stereo™ FM stereo with seek and scan; auto reverse with search/repeat and clock (5)
 - Radio delete (front speakers not deleted)
 - Rear dual extended range speakers
 - Concert Sound II (6)-speaker system
 - Automatic power antenna
 - Automatic power antenna (black mount)

Roofs

- Silver Astrorac® (electric-sliding)
- Lockable hatch roof
- Landau vinyl top
- Heavily padded Landau vinyl top

Seats

- Manual seatback recliner (passenger)
- 6-way power seat (driver)

Special Equipment

- Front license plate mounting
- Limited-slip differential

Steering Wheels

- Tilt steering column
- Sport steering wheel

Stripes

- Body-side Stripes (Stripes should match top or interior trim color whenever possible)

Suspensions

- Heavy-duty suspension
- Gran Touring suspension

Tires

- Steel-belted, radial-ply, all-season, whitewall tires (P205/70R14)
- Steel-belted, radial-ply, white letter tires (P215/65R15)
- Steel-belted, radial-ply, all-season, blackwall tires (P195/75R14)

Touring Options

- T Package
- Exterior Sport Package
- Regal Grand National
- Turbo Package

Transmissions

- Automatic transmission with overdrive

Wheels and Wheelcovers

- Aluminum wheels (4)
- Chrome-plated wheels
- Color-keyed wheels with trim rings (4)
- Custom locking wire wheelcovers

Windows

- Power windows

Wipers

- 2-speed windshield wiper with low-speed delay feature

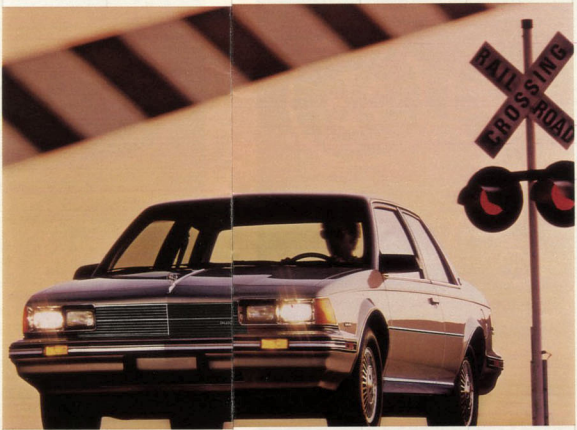
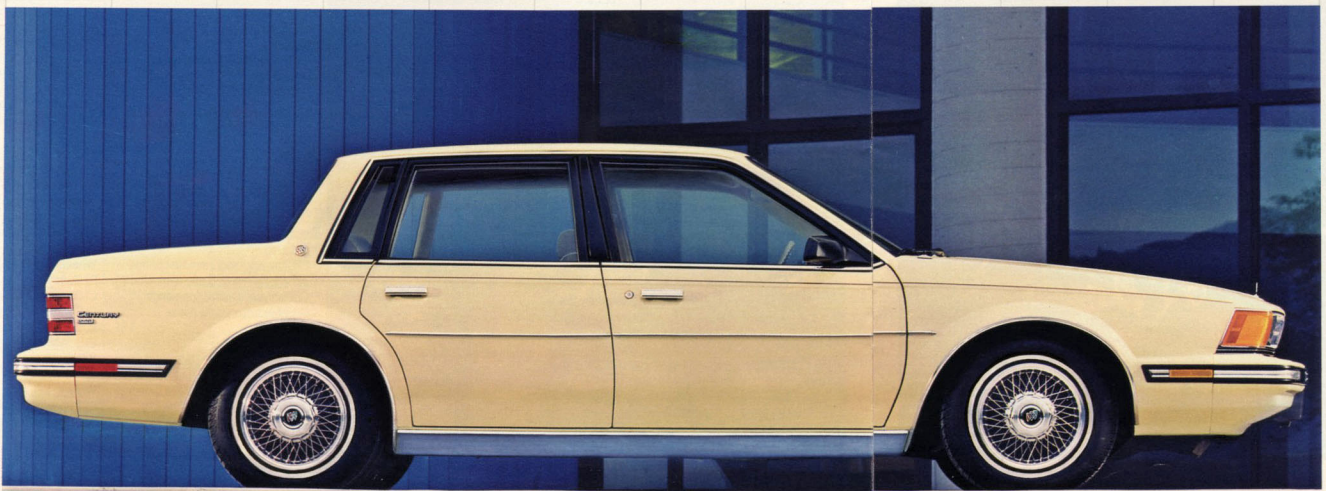
std.—standard

► Inside, the Century displays a high level of interior finish. The Limited offers elegant velour and available leather trim in the seating areas.



◀ The Century Sedan can be given additional appeal by specifying the distinctive Exterior Sport Package from the available Touring Options list.

► Beneath the clean, stylish lines of the Buick Century Limited Sedan are front-wheel drive and a fully independent front suspension.



◀ The Century Custom Coupe combines traditional Buick values and advanced technology in a handsome, modern package.

► Controls and instruments in the Buick Century are positioned ergonomically, allowing ease of use by the driver.



Buick Century

Where it is necessary to select one Buick to represent the stunning versatility that results from applying leading-edge technology to traditional values, a logical choice would be the 1987 Buick Century.

One look at the low-lying, wedge-shaped aerodynamic styling of the Century evokes thoughts of truly satisfying motoring in the European tradition. The Century's clean, crisp styling, together with its grille treatment and low profile headlamps, gives the Century a look that would be at home on any road in the world.

Century Custom and Limited

The Century Custom is available as a coupe or sedan and the Century Limited appears in sedan and coupe versions. Additionally, buyers may choose a Century four-door Custom or Estate Wagon. It is by no means overstatement to say that a Century can be tailored to virtually any taste, and to any purpose.

Century for 1987, above all, is a contemporary car in every way, sharing dimensions and attitude with many of its imported colleagues, giving it a paradoxically European and American personality. The Century offers the traction of front-wheel drive, a wide range of performance-oriented engines, and ride and handling characteristics enhanced by its fully independent MacPherson strut front suspension.

The Century as Touring Car

For enthusiasts who want a sedan or coupe that has actually been engineered with enthusiastic driving in mind, the Century may be equipped with the available "T" Package. This selection will provide a suspension, wheels and tires carefully chosen for the performance-minded driver. The Gran Touring suspension features firm springs, larger-diameter front and rear stabilizer bars and a quicker steering ratio. These join with low-profile Eagle GT blackwall steel-bellied radial tires, stylish aluminum wheels and a sporty leather-wrapped steering wheel to produce a more performance-oriented road feel.

The Century's exterior can also be modified to suit the enthusiast's taste. By specifying the available Exterior Sport Package, a distinctive appearance will result. Grille, bump-

ers, moldings and wheel openings are given a tasteful blackout treatment. The overall effect is that of a purposeful car engineered to take the road in graceful stride.

The Custom and Limited are moved briskly by a standard 2.5-litre Tech IV four-cylinder equipped with electronic fuel injection and mated to a three-speed automatic transmission. Optional engines include a 2.8-litre V-6 with multi-port fuel injection and a 3.8-litre V-6 with sequential-port fuel injection.

The Century Interior

The interior of the Century presents further evidence of the Century's high level of standard features. Comfort and luxury are instantly apparent. The notchback front bench seat in the Custom is upholstered in a very handsome cloth fabric. The Limited's 85/45 notchback seats are covered by luxurious velour and its 45/45 seats are available with cloth or leather trim in the seating areas. New shiplap gray dash and door trim appears on 1987 Century Coupes, and brushed pewter trim is used on sedan models.

Throughout the Century line, the interiors present a harmonizing, color-coordinated atmosphere that is practical yet pleasing to the hand and eye. The Century offers a long list of standard equipment and a choice group of available options.

Moreover, the Century interior is designed to be used, with careful attention paid to the proper ergonomic location of all controls and switches. Inside, one of the many advantages of front-wheel drive is readily apparent: ample interior room. That's because there is no space-wasting transmission under the front floorboard. It's up front with the engine.

The Century, like all Buicks for 1987, benefits from a wide application of such electronic assistance as micro-processors and micro-computers that monitor and control a myriad of engine functions, and which feed a constant stream of data to the instrument panel.

For 1987, the Buick Century offers a full range of models, styles and personalities that have been designed with your individual transportation tastes and requirements in mind.

Models	Century Custom Coupe H27	Sedan H19
Special Option Packages	Century Limited Coupe L27	Sedan L19

Exterior Sport Package (Sedans)—Includes the following black exterior parts: cylinder locks and door handles, front end, fixed-mast antenna, bumpers and rub strips, grille, headlamp/tail lamp bezels, roof drip, belt reveal and wheel opening moldings. (rocker panel moldings deleted). Available in 4 exterior colors.

T Package (Coupes/Sedans)—Includes 14" aluminum wheels with steel belted, radial-ply Eagle GT blackwall tires (P215/60R14*); leather-wrapped sport steering wheel; Gran Touring suspension and T emblem on front fender.

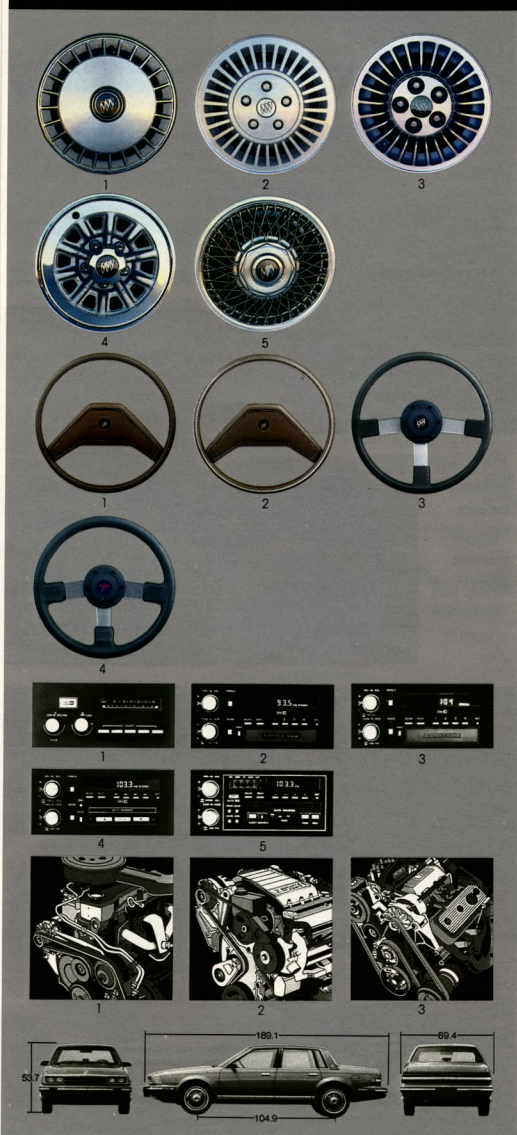
Engine	Transmission
2.5-litre Tech IV with Electronic Fuel Injection (standard)	Automatic (standard)
2.8-litre V-6 with Multi-port Fuel Injection (available)	Automatic (standard) Automatic with Overdrive (available)
3.8-litre V-6 with Sequential-port Fuel Injection (available)	Automatic with Overdrive (available)

Refer to the EPA mileage estimate and engine supplement chart included with this catalog.

White	Cream Beige	
Silver Metallic	Light Brown Metallic	
Gray Metallic	Brown Metallic	
Black	Rosewood Metallic	
Light Blue Metallic	Dark Red Metallic	
Dark Blue Metallic	Light Sage Metallic	
Vinyl Top Colors		
White	Black	Dark Red
Tan	Dark Blue	
Light Sage	Dark Gray	

*Tire chains should not be used on a Century equipped with P215/60R14 tires because they may cause damage to the vehicle.

Inches unless otherwise noted	Custom, Limited Coupes	Custom, Limited Sedans
Overall		
Length	189.1	189.1
Width	69.4	69.4
Height	53.7	53.7
Wheelbase	104.9	104.9
Front Tread	58.7	58.7
Rear Tread	56.8	56.8
Interior Front		
Legroom	42.1	42.1
Headroom	38.6	38.6
Shoulder Room	56.2	56.2
Hip Room	52.3	52.4
Interior Rear		
Legroom	36.1	35.9
Headroom	37.9	38.0
Shoulder Room	57.0	56.2
Hip Room	53.6	52.7
Trunk Volume	16.2 cu. ft.	16.2 cu. ft.
Fuel Tank Capacity	15.7 gallons	15.7 gallons



Standard Equipment	Available Equipment
<ul style="list-style-type: none"> ■ Antenna—fixed-mast ■ Battery—Delco Freedom II Plus ■ Belts and Buckles—color-coordinated seat and shoulder ■ Brakes—low-drag power front disc/rear drum ■ Bumpers—integrated body-color ■ Bumper Protective Strips—front and rear ■ Bumper Guards—front and rear ■ Carpeting—cut-pile, front and rear ■ Chassis Springs—computer selected ■ Defogger—front, side-window outlets ■ Drive—front-wheel ■ Electronic Warning Tone—seat belt and ignition key ■ Engine—2.5-litre Tech IV EFI (includes heavy-duty battery) ■ Engine Mounts—hydraulic, tuned ■ Glove Compartment Lock ■ Headlamps—tungsten-halogen ■ "Headlamps-on" Warning Tone ■ Headrests—adjustable front-seat ■ Hood Lock—inside release ■ Horns—dual ■ Lamp—high-mounted stop ■ Lights—instrument panel courtesy, map, ashtray, glove box, trunk and engine compartment ■ Mirror—styled black, outside, rear-view, left-manual ■ Moldings—bright wheel opening ■ Moldings—pillar, roof drip, black door frame and belt reveal ■ Moldings—narrow rocker panel (Custom) ■ Moldings—wide rocker panel and hood windsplit (Limited) ■ Multi-function Control Lever—turn signal, headlamp high/low beam and windshield wiper/washer controls ■ Paint—Plastisol protection ■ Radio—Delco push-button AM with dual front speakers (radio may be deleted for credit) (1) ■ Seats—cloth notchback bench (Custom) ■ Seats—cloth 55/45 notchback (Limited) ■ Steering—power (rack-and-pinion) ■ Steering Wheel—custom (Custom) ■ Steering Wheel—limited (Limited) ■ Struts—gas hood ■ Suspension—front independent MacPherson strut ■ Tire—compact spare ■ Tires—steel-belted, radial-ply, all-season blackwall (P185/75R14) ■ Transmission—automatic ■ Trunk Trim—floor covering and side-wall ■ Wheelcovers—deluxe ■ Wipers—2-speed 	<ul style="list-style-type: none"> □ ETR-AM-FM stereo with seek and scan (2) □ ETR-AM-FM stereo with seek and scan and clock (3) □ Cassette tape and ETR-AM-FM stereo with seek and scan, auto reverse and clock (4) □ Graphic equalizer, cassette tape and ETR-AM stereo™-FM stereo with seek and scan, auto reverse with search/repeat and clock (5) □ Radio and front speakers delete □ Premium speaker system □ Automatic power antenna □ Automatic power antenna (black mount) Roofs □ Flip-open, Vista-Vent removable glass sunroof □ Landau vinyl top (Coupes) □ Landau heavily-padded vinyl top (Coupes) □ Full vinyl top (Sedans) Seats □ Manual seatback recliners (driver and passenger) □ Manual seatback recliner (passenger) □ 6-way power seat (driver) Special Equipment □ Luggage rack—black □ Luggage rack—bright □ Front license plate mounting Steering Wheels □ Tilt steering column □ Sport steering wheel Stripes □ Body-side Stripes (Stripes should match top or interior trim color whenever possible) Suspensions □ Heavy-duty suspension □ Gran Touring suspension Tires □ Steel-belted, radial-ply, all-season, whitewall tires (P185/75R14) □ Steel-belted, radial-ply, all-season, blackwall tires (P195/75R14) □ Steel-belted, radial-ply, all-season, whitewall tires (P185/75R14) Touring Options □ Exterior Sport Package (Sedans) □ T Package Transmission □ Automatic transmission with overdrive Wheels and Wheelcovers □ Custom locking wire wheelcovers □ Styled hub cap and trim ring □ Aluminum wheels Windows □ Power windows Wipers □ 2-speed windshield wiper system includes low-speed delay feature □ Receives C-Quam™ AM stereo broadcasts. Most AM stereo stations across the country broadcast in C-Quam™ but some do not. Check with your local stations for compatibility in your area.

Wheels/ Wheelcovers

1. Deluxe wheelcover
2. 14" aluminum wheel
3. 15" aluminum wheel
4. Styled hubcap with trim ring
5. Wire wheelcover

Steering Wheels

1. Custom wheel
2. Limited wheel
3. Sport wheel
4. Leather-wrapped sport wheel

Radios

See standard and available equipment listings

Engines

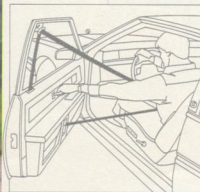
1. 2.5-litre Tech IV with MFI
2. 2.8-litre V-6
3. 3.8-litre V-6 with SFI

std.—standard





▼ Automatic safety belt system.



▼ Seating in the Somerset has the sophisticated look that results when functional purpose is combined with quality materials.

◀ Already at the forefront of modern technology, the Somerset can be further enhanced with available Touring Options.

Buick Somerset

For the driver who takes both pride and pleasure from a car cast in a different mold, Buick's Somerset represents a modern, appealing alternative. Somerset is a car that begins with an undeniable dignity to which has been added a generous amount of performance, a tasteful, wind-tunnel-shaped exterior and, best of all, distinctive, understated style. In its every line, its every appointment, the Somerset is a car for today and beyond, a personal car that makes an enviable statement about its driver—in a voice that is quietly authoritative.

Somerset Custom and Limited

The Somerset, by way of emphasizing its personal nature and individual character, is made available only as a coupe. The Somerset Custom and the Somerset Limited constitute the entire line. Consequently, the driver who chooses Somerset is assured of a certain distinctiveness from the outset.

If a car that is already distinctive requires, in the opinion of its buyer, still more individuality, the new Somerset can be custom-tailored. The addition of the T[®] Package, when combined with the available 3.0-liter engine, will result in a genuine driver's car, a true road machine meant to be driven and savored by those to whom motoring is as much entertainment as it is transportation.

Power for this unique car is provided by a high-response 2.5-liter Tech IV four-cylinder engine fitted with electronic fuel injection and paired with a close-ratio five-speed manual transmission or optional automatic. Added power is available from the 3.0-liter V-6 with multi-port fuel injection.

The Touring Options

The T[®] Package enhances the basic Somerset suspension, in itself a sophisticated system. The Gran Touring suspension included in the T[®] Package offers a firm, positive ride quality geared to please drivers to whom precision and response are cardinal virtues. Providing sure contact with the road are low-profile P215/60R14 steel-belted radial blackwall tires (the respected Eagle GTs) on cast-aluminum alloy wheels. A leather-wrapped steering wheel completes the package.

By adding the Exterior Sport Package to your Somerset, you will create an aggressive, undomestic exterior that features blacked-out grille, bumpers and trim. The Somerset thus equipped, with its color coordinated lower body accents and front air dam, can be compared with the purposeful appearance of European sport coupes. The Somerset's every mannerism says that it was designed for the enthusiast in you. For full details, see the Touring Options section on page 25.

Further distinctions abound, including a grille treatment redesigned for 1987. The Somerset exterior, with its rounded-wedge lines, combines the best of automotive art and science to produce an automobile that blends the quiet of sound aerodynamics with an appearance that inspires confidence even before the interior has been experienced.

New Interior Choices

Inside both the Somerset Custom and Somerset Limited, new seat and cloth trim designs specific to each model have been added for 1987, as have shale-gray trim plates on the dash, console and doors. In every Somerset, quality fabrics smooth to the touch have been chosen with an eye to practicality as well as esthetics. New cloth fabric will be found in the Somerset Custom and an extraordinary cloth interior on the Limited. The full-foam seats provide firm, lumbar support for occupants. After January, 1987, Somerset Coupes will be equipped with an innovative automatic safety belt system.

Look about the cockpit of the Somerset, and you will note the ergonomically correct placing of controls, instruments and switches. The radio controls, as an example, are located in the console, so as to be reached with ease. The latest in electronic digital instrumentation and interior design further distinguishes the Somerset interior. As you would expect, an array of available, correctly applied conveniences can be added to any Somerset, including pushbutton-control air conditioning, a rear luggage rack and sound systems with graphic equalizers.

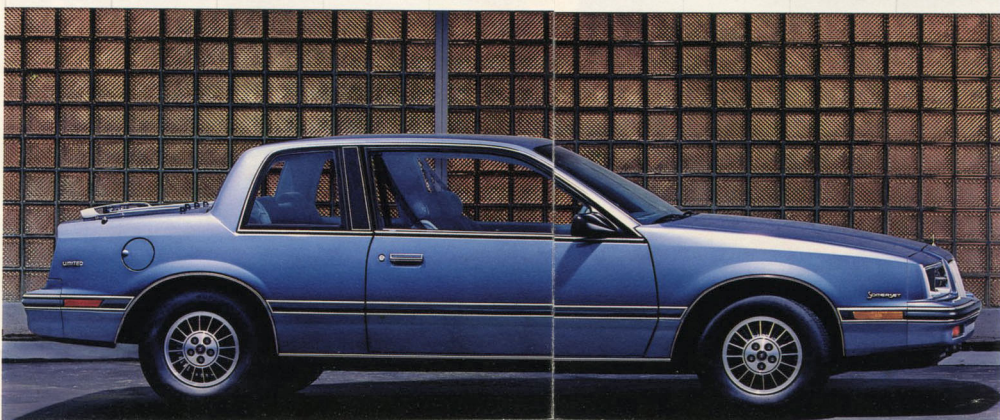
In every way a car for today's driver, the Buick Somerset represents personal transportation at its modern best.



◀ The Buick Somerset is intended for drivers who appreciate both individuality and character.



◀ Digital instrument displays, fingertip electronic controls and tasteful design execution characterize the Somerset's dash panel.



Models

Somerset Custom	Coupe J27
Somerset Limited	Coupe M27

Special Option Packages

T Package – Includes: Gran Touring suspension, 14" aluminum wheels; steel-belted, radial-ply, Eagle GT blackwall tires (P215/60R14); leather-wrapped sport steering wheel; "T" ornamentation.

Exterior Sport Package – Includes the following black moldings: roof drip, wheel opening, and belt reveal; includes the following black exterior parts: lock cylinders and door handles, grille, headlamp bezels, radio antenna and tail lamp bezels and trim; front and rear bumper rub strip; front air dam, hood ornament deleted; aero rocker panel moldings; amber parking lamps; red and amber tail lamps. Available in 5 exterior colors.

Powerteams

Engine	Transmission
2.5-litre Tech IV with Electronic Fuel Injection (standard)	5-speed Manual (standard) Automatic (available)
3.0-litre V-6 with Multi-port Fuel Injection (available)	Automatic (available)

Refer to the EPA mileage estimate and engine supplement chart included with this catalog.

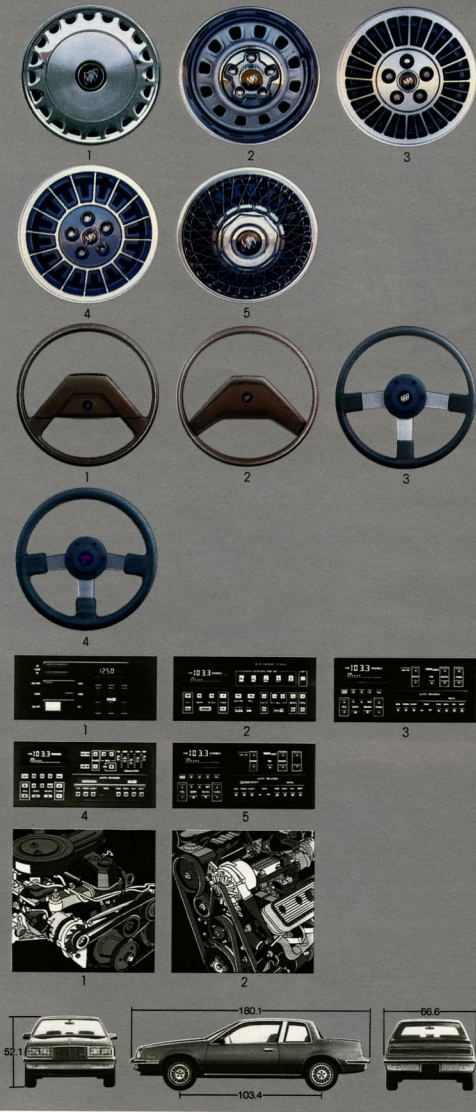
Exterior Colors

White	Light Rosewood Metallic
Silver Metallic	Medium Rosewood Metallic
Dark Gray Metallic	Medium Blue Metallic
Black Metallic	Copper Beige
Light Blue Metallic	Copper Metallic
Red Metallic	Dark Copper Metallic

Dimensions

Inches unless otherwise noted	Custom, Limited Coupes
Overall	
Length	180.1
Width	66.6
Height	52.1
Wheelbase	103.4
Front Tread	55.6
Rear Tread	55.2
Interior Front	
Legroom	42.9
Headroom	37.7
Shoulder Room	53.7
Hip Room	51.9
Interior Rear	
Legroom	34.3
Headroom	37.1
Shoulder Room	55.4
Hip Room	50.7
Trunk Volume	13.4 cu. ft.
Fuel Tank Capacity	13.6 gallons

BUYER'S GUIDE



Wheels/

Wheelcovers

1. Deluxe wheelcover
2. Styled hubcap with trim ring
3. 13" aluminum wheel
4. 14" aluminum wheel
5. Wire wheelcover

Steering Wheels

1. Custom wheel
2. Limited wheel
3. Sport wheel
4. Leather-wrapped sport wheel

Radios

See standard and available equipment listings

Engines

1. 2.5-litre Tech IV
2. 3.0-litre V-6 with MFI

Standard Equipment

- Antenna – fixed-mast
- Armrest – front-seat center
- Armrest – front and rear-seat center (Limited)
- Ashtray – front and rear in console
- Battery – Delco Freedom II Plus
- Brakes – low drag, power front disc/rear drum
- Bumpers – soft fascia and body-color coordinated
- Bumper Protective Strips – front and rear, color-coordinated
- Carpeting – cut-pile
- Console – full-length operating
- Drive – front-wheel
- Electronic Warning Tone – seat belts, ignition key and "headlamps on"
- Engine – 2.5-litre Tech IV with EFI
- Fuel-filler Door Release – remote (Limited)
- Glass – Soft-Ray tinted
- Glove Tray – lockable
- Headlamps – tungsten-halogen
- "Headlamps on" indicator
- Heat Ducts – rear-seat ventilation
- Horns – dual
- Instrumentation – electronic digital includes: speedometer, trip odometer (with English/Metric converter), low fuel indicator, and multi-function gauge voltmeter, engine temperature, oil pressure and tachometer
- Lamp – high-mounted stop
- Lamps – front and rear courtesy (Limited)
- Lights – door-operated dome (Custom)
- Lights – instrument panel courtesy, front console-mounted ashtray, glove tray, trunk and engine compartment
- Map Strap – driver's sun visor
- Mirror – day/night, inside rearview
- Mirror – visor vanity (passenger)
- Mirror – styled black, outside, rearview, left manual (Custom)
- Mirrors – styled black, outside, rearview, left remote, right manual (Limited)
- Moldings – belt reveal and roof drip
- Moldings – narrow rocker panel (Limited)
- Moldings – wheel opening (Limited)
- Paint – clearcoat, Plastisol protection
- Radio – ETR AM with dual front speakers (radio may be deleted for credit) (1)
- Seat – easy-entry front
- Seatbelts – automatic safety belt system, color-coordinated (January, 1987)
- Seats – reclining cloth or vinyl front bucket (Custom)
- Seats – reclining limited level cloth front bucket (Limited)
- Steering – power (rack-and-pinion)
- Steering Wheel – custom (Custom)
- Steering Wheel – limited (Limited)
- Struts – gas hood and trunk

- Suspension – front, independent MacPherson strut
- Switches – low travel for: headlamps, windshield wiper/washer controls
- Tire – compact spare
- Tires – steel-belted, radial-ply, all-season blackwall (P185/80R13)
- Transmission – 5-speed manual overdrive
- Trunk Trim – deluxe floor mat, wheelhouse covers and seatback panel
- Wheelcovers – deluxe

Available Equipment

- Air Conditioning**
- Air conditioner
- Axle**
- 2.84 axle ratio
- Cruise Control**
- Electronic cruise control
- Defogger**
- Electric rear-window defogger
- Engine**
- 3.0-litre MFI V-6 engine
 - California assembly line emission equipment and testing (required in California)
 - Engine block heater
- Floor Coverings**
- Front carpet savers with inserts
 - Rear carpet savers with inserts
- Lights**
- Front- and rear-seat reading and courtesy lamps
- Locks**
- Electric door locks
 - Remote electric trunk lock release
- Mirrors**
- Styled black, remote-control outside rearview mirrors (left remote, right manual) (std. on Limited)
 - Electric black mirrors (left and right remote)
 - Lighted visor vanity mirror
- Moldings**
- Wide rocker panel moldings
 - Narrow, bright rocker panel moldings (std. on Limited)
 - Color-coordinated, protective, body-side moldings
 - Wide body-side molding
 - Bright door-edge guards
 - Bright wheel opening moldings (Custom)
- Paint**
- Lower Designers' Accent
- Radios**
- Fixed-mast antenna standard unless power antenna ordered
- ETR AM-FM stereo with seek and scan and clock (2)
 - Cassette tape and ETR AM-FM stereo with seek and scan, auto reverse and clock (3)
 - Graphic equalizer, cassette tape and ETR AM stereo "FM stereo with seek and scan auto reverse with search/repeat and clock (4)
 - Delco Bose Music System including Dolby, cassette and ETR AM stereo "FM stereo with seek and scan and clock (5)
 - Clock delete (front speakers not deleted)
 - Rear dual extended range speakers
 - Concert Sound II (6) -speaker system
 - Automatic power antenna
- Roof**
- Flip-open, Vista-Vent removable glass sunroof with wind deflector



Seats

- 6-way power seat (driver)
- 4-way manual seat (driver)

Special Equipment

- Remote fuel-filler door release (std. on Limited)
- Luggage rack – bright
- Luggage rack – black
- Front license plate mounting

Steering Wheels

- Tilt steering column
- Sport steering wheel

Stripes

- Body-side Stripes (Stripes should match interior trim color whenever possible)

Suspensions

- Gran Touring suspension

Tires

- Steel-belted, radial-ply, all-season, whitewall tires (P185/80R13)
- Steel-belted, radial-ply, all-season, blackwall tires (P205/70R13)
- Steel-belted, radial-ply, all-season, whitewall tires (P205/70R13)
- Steel-belted, radial-ply, all-season, white letter tires (P205/70R13)
- P215/60R14 steel-belted, radial-ply white letter tires†

Touring Options

- T Package
- Exterior Sport Package

Transmission

- Automatic transmission
- **Wheels and Wheelcovers**
- Custom locking wire wheelcovers
- Aluminum wheels (4)
- Styled hubcap with trim ring

Windows

- Power windows
- Wipers
- 2-speed windshield wiper with low-speed delay feature

std. – standard
 †Receives C-Quam™ AM stereo broadcasts. Most AM stereo stations across the country broadcast in C-Quam™ but some do not. Check with your local stations for compatibility in your area.

†Tire chains should not be used on a Somerset equipped with P215/60R14 tires because they may cause damage to the vehicle.



◀ The Skylark T[®] Package is intended for those drivers who seek just a bit more from their automobile.



◀ Electronic digital instrumentation is standard for Skylark Sedans, as are a number of comfort and convenience features.



▶ Buick's Skylark Sedans for 1987 offer practical comfort in a front-wheel-drive car suitable for both family and business use.

▲ The Skylark Limited interior features adjustable reclining seats in cloth. Leather trim is available in the seating area.



Buick Skylark

The Buick Skylark series for 1987 offers two sedans designed to serve with equal facility and propriety as family or business transportation. For buyers seeking an automobile that lies just below the Century in size, the two Skylark Sedans, the Skylark Custom and the Skylark Limited, are worth more than a casual examination. Both offer Buick value and ride comfort in a car carefully engineered to give driver and passengers alike the satisfaction that comes with quality transportation.

Modern Sedan Design

Buick Skylark for 1987 is a modern automobile throughout. The front-wheel drive with transverse-mounted engine allows generous interior space, while independent front MacPherson struts, low-drag front disc brakes, and a trailing-arm rear suspension patterned after those used on performance cars give the all-important ride and handling the benefit of today's technology. Computer-tuned coil springs at each wheel deliver predictability without sacrificing the comfort of the celebrated Buick ride.

A Special Skylark

The 1987 Skylark can be equipped with a new combination of available equipment which will add a spirit of performance intended for those drivers who ask just a bit more from their automobiles: The T[®] Package (see Buyer's Guide in this section on page 29) equips the Skylark with the firm Gran Touring suspension, a leather-wrapped steering wheel and styled cast-aluminum alloy wheels matched to wide P215/60R14 Eagle GT steel-belted blackwalls.

The use of the T[®] Package, coupled with the available 3.0-litre V-6 engine will transform the standard Skylark Limited or Custom Sedan into a road-ready cruiser. See the Touring Options section for details.

Aerodynamic Power

The styling of the Skylark Sedans incorporates the latest wind-tunnel-generated designs. You'll find these

Buicks lock almost any hint of intrusive wind noise as they slip through the air. Stability characteristics are also enhanced by the attention lavished on aerodynamics.

Standard power for the Skylark is the electronically fuel-injected 2.5-litre Tech IV engine and manual five-speed transmission with overdrive, a combination fitted with a hydraulically-assisted clutch which contributes to ease of engagement and smooth shifting. The Buick 3.0-litre V-6 with multi-port fuel injection and a three-speed automatic transmission is available.

Interior Treatments

The Skylark Custom interior offers the buyer rich cloth that is tastefully color-keyed to the exterior. The Skylark Limited offers a luxurious cloth interior or may be ordered with seating areas accented with supple, top-grain leather. The adjustable reclining seats in the Skylark Limited, not incidentally, have been designed and engineered to provide essential thigh and lumbar support, with the goal of making long-distance driving more comfortable. Also, Skylark Sedans will be equipped with an innovative automatic safety belt system after January, 1987 (see page 23).

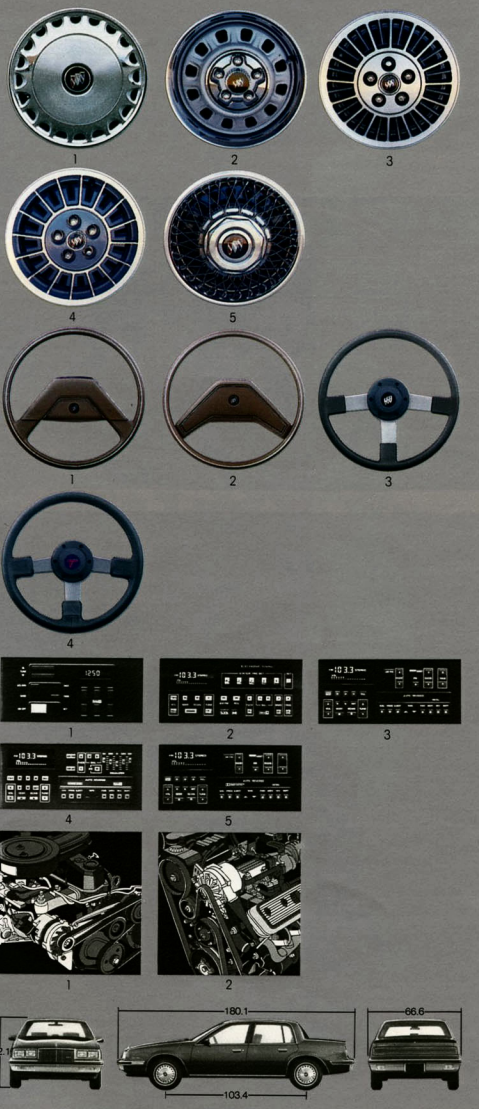
The most frequently used controls have been placed in a convenient center console located at the driver's fingertips. An example of sound ergonomic design—"human engineering"—the instrument pod features positive, low-travel switches. Another example of the thought that goes into Buick interior design. Experience the comfort and convenience of a Skylark interior and you'll see what we mean.

A full range of available options endow the Skylark with added comfort and convenience. The list extends from sound systems to seating fabrics and joins such useful standard equipment as all-season radial tires and electronic digital instrumentation.

The 1987 Skylark represents an excellent value, an automobile that combines drivability, spaciousness, comfort and enjoyment. These qualities combine to deliver a feel and a capability representative of traditional Buick quality. A thoughtful blending of automotive qualities that are a source of pride to Buick.

Models	Skylark Custom	Sedan C69
	Skylark Limited	Sedan D69
Special Option Package	T Package – Includes: Gran Touring suspension, 14" aluminum wheels, steel-belted, radial-ply, Eagle G1 blackwall tires (P215/60R14)†; leather-wrapped sport steering wheel; T ornamentation.	
	Engine	Transmission
Powertrains	2.5-litre Tech IV with Electronic Fuel Injection (standard)	5-speed Manual (standard)
	3.0-litre V-6 with Multi-port Fuel Injection (available)	Automatic (available)
Exterior Colors	Refer to the EPA mileage estimate and engine supplement chart included with this catalog.	
	White	Light Rosewood Metallic
	Silver Metallic	Medium Rosewood Metallic
	Dark Gray Metallic	Medium Blue Metallic
	Black Metallic	Copper Beige
	Light Blue Metallic	Copper Metallic
	Red Metallic	Dark Copper Metallic

Dimensions	Inches unless otherwise noted	Custom, Limited Sedans
	Overall	
	Length	180.1
	Width	66.6
	Height	52.1
	Wheelbase	103.4
	Front Tread	55.6
	Rear Tread	55.2
	Interior Front	
	Legroom	42.9
	Headroom	37.7
	Shoulder Room	53.7
	Hip Room	50.6
	Interior Rear	
	Legroom	34.3
	Headroom	37.1
	Shoulder Room	53.2
	Hip Room	51.2
	Trunk Volume	13.4 cu. ft.
	Fuel Tank Capacity	13.6 gallons



Wheels/ Wheelcovers

- Deluxe wheelcover
- Styled hubcap with trim ring
- 13" aluminum wheel
- 14" aluminum wheel
- Wire wheelcover

Steering Wheels

- Custom wheel
- Limited wheel
- Sport wheel
- Leather-wrapped sport wheel

Radios

See standard and available

Engines

- 2.5-litre Tech IV
- 3.0-litre V-6 with MPI

Standard Equipment

- Antenna – fixed-mast
- Armrest – front and rear-seat center (Limited)
- Ashtray – front and rear in console
- Battery – Delco Freedom II Plus
- Brakes – low drag, power front disc/rear drum
- Bumpers – soft fascia, bright trimmed
- Bumper Protective Strips – body-color front and rear
- Carpeting – cut-pile
- Console – full-length operating
- Drive – front-wheel
- Electronic Warning Tone – seat belts and ignition key
- Engine – 2.5 litre Tech IV with EFI
- Fuel-filler Door, Release – remote (Limited)
- Glass – Soft-Ray tinted
- Glove Tray – lockable
- Headlamps – tungsten-halogen
- "Headlamps on" indicator
- Heat Ducts – rear-seat ventilation
- Horns – dual
- Instrumentation – electronic digital includes: speedometer, trip odometer (with English/Metric converter), low fuel indicator, and multi-function gauge: voltmeter, engine temperature, oil pressure and tachometer
- Lamp – high-mounted stop
- Lamps – front and rear courtesy (Limited)
- Lights – front and rear door-operated dome (Custom)
- Lights – instrument panel courtesy, front console-mounted ashtray, glove tray, trunk and engine compartment
- Map Strap – driver's sun visor
- Mirror – day/night, inside rearview
- Mirror – visor vanity (passenger) (Limited)
- Mirror – styled black, outside, rear-view, left manual (Custom)
- Mirrors – styled black, outside, rear-view, left remote, right manual (Limited)
- Moldings – belt reveal and roof drip
- Moldings – narrow rocker panel and wheel opening (Limited)
- Paint – clearcoat, Plastisol protection
- Radio – Delco ETR AM with dual front speakers (radio may be deleted for credit) (1)
- Seatbelts – automatic safety belt system, color-coordinated (January, 1987)
- Seats – cloth or vinyl front bucket (Custom)
- Seats – reclining cloth front bucket (Limited)
- Steering – power (rack-and-pinion)
- Steering Wheel – custom (Custom)
- Steering Wheel – limited (Limited)
- Struts – gas hood and trunk
- Suspension – front, independent MacPherson strut
- Switches – low travel for: headlamps, windshield wiper/washer controls

- Tire – compact spare
- Tires – steel-belted, radial-ply, all-season blackwall (P185/80R13)
- Transmission – 5-speed manual overdrive
- Trunk Trim – deluxe floor mat, wheelhouse covers and seatback panel (Limited)
- Wheelcovers – deluxe
- Windows – roll-down rear-door

Available Equipment

- Air Conditioning**
- Air conditioner
- Axle**
- 2.84 axle ratio
- Cruise Control**
- Electronic cruise control
- Defogger**
- Electric rear-window defogger
- Engine**
- 3.0-litre MPI V-6 engine
 - California assembly line emission equipment and testing (required in California)
 - Engine block heater
- Floor Coverings**
- Front carpet covers with inserts
 - Rear carpet covers with inserts
 - Trunk mat, wheelhouse cover and seatback panel (Custom)
- Lights**
- Front- and rear-seat reading
 - Front door courtesy and warning lights (Limited)
- Locks**
- Electric door locks
 - Remote electric trunk lock release
- Mirrors**
- Visor vanity mirror (passenger) (Custom)
 - Styled black, remote-control outside rearview mirrors (left remote, right manual) (std. on Limited)
 - Electric mirrors, body color (left and right remote)
 - Lighted visor vanity mirror (passenger)
 - Lighted visor vanity mirror (passenger)
- Moldings**
- Wide rocker panel moldings
 - Narrow, bright rocker panel moldings (std. on Limited)
 - Color-coordinated, protective, body-side moldings
 - Wide body-side molding
 - Bright door-edge guards
 - Bright wheel opening moldings (Custom)
- Paint**
- Lower Designers' Accent – available with all exterior colors
- Radios**
- Fixed-mast antenna standard unless power antenna ordered
- ETR AM-FM stereo with seek and scan and clock (2)
 - Cassette tape and ETR AM stereo with seek and scan, auto reverse and clock (3)
 - Graphic equalizer, cassette tape and ETR AM stereo† FM stereo with seek and scan auto reverse with search/repeat and clock (4)
 - Delco Bose Music System including Dolby, cassette and ETR AM stereo† FM stereo with seek and scan and clock (5)
 - Radio delete (front speakers not deleted)
 - Rear dual extended range speakers
 - Concert Sound II (6) speaker system
 - Automatic power antenna



Roof

- Flip-open, Vista-Vent removable glass sunroof with wind deflector

Seats

- 6-way power seat (driver)
- 4-way manual seat (Custom)
- Front seat center armrest (Custom)
- Reclining front seatbacks (Custom)

Special Equipment

- Remote fuel-filler door release (std. on Limited)
- Bright deck lid luggage rack
- Front license plate mounting

Steering Wheels

- Tilt steering column
- Sport steering wheel

Stripes

- Body-side Stripes (Stripes should match interior trim color whenever possible)

Suspensions

- Gran Touring suspension

Tires

- Steel-belted, radial-ply, all-season, whitewall tires (P185/80R13)
- Steel-belted, radial-ply, all-season, blackwall tires (P205/70R13)
- Steel-belted, radial-ply, all-season, whitewall tires (P205/70R13)
- Steel-belted, radial-ply, all-season, white letter tires (P205/70R13)
- Steel-belted, radial-ply white letter tires (P215/60R14)†

Touring Option

- T Package

Transmission

- Automatic transmission

Wheels and Wheelcovers

- Custom locking wire wheelcovers
- Aluminum wheels (4)
- Styled hubcap with trim ring

Windows

- Power windows

Wipers

- 2-speed windshield wiper with low-speed delay feature

std – standard
 †Receives C-Quam® AM stereo broadcasts. Most AM stereo stations across the country broadcast in C-Quam® but some do not. Check with your local stations for compatibility in your area.
 ‡Tire chains should not be used on a Skylark equipped with P215/60R14 tires because they may cause damage to the vehicle.

▼ The Skyhawk Limited interior can be equipped with the Interior Sport Package which adds an easy-entry front seat and special trim to the reclining cloth bucket seats.



◀ The Skyhawk is available as a sedan and wagon and as a coupe and hatchback.

▼ The Buick Skyhawk line for 1987. Buicks that not only deliver extraordinary value but also give the driver an unusual sense of enjoyment.

You'll find, in the automotive world, a limited number of cars that are unquestionably geared to enjoyment. Cars that are just plain fun to drive. So much fun, in fact, that drivers consider time spent behind their steering wheels to be golden. The Buick Skyhawk is such a car.

Buick Skyhawk

A Full Model Range

For 1987, the Skyhawk is available as a Custom Coupe and Sedan, a Sport Hatchback, a Limited Coupe and Sedan and as a Custom and Limited Wagon, each with front-wheel drive in a compact size. But 1987's big news for sporting drivers is a new turbocharged engine/manual transmission combination and four new Touring Option packages.

A 2.0-liter four-cylinder engine is the standard power unit for all Skyhawks, with the turbocharged overhead-cam four available in the Turbo Package. For more information on Touring Options and engine availability, see the Buyer's Guide in this section.

The Skyhawk exterior is distinguished by low-profile mini-quad halogen headlamps that permit a low-lying hood design and, as a consequent benefit, improved aerodynamics. The slick three-door Sport Hatchback (which, like the Limited Coupe, boasts concealed headlamps) adds a dash of practicality to a car whose mission is to deliver sensory pleasure in the Buick manner.

Skyhawk Custom and Limited

The Skyhawk Custom and Limited series share the aggressive, aerodynamic wedge profile with the Skyhawk Sport Hatchback and comprise a full line of cars built in the Buick tradition.

The 2.0-liter four-cylinder unit, standard in the Custom, Sport and Limited, teams with a four-speed manual transmission for smooth-shifting under way. Other standard features include MacPherson strut front suspension, power front disc brakes and rack-and-pinion steering.

Interior Features

The standard Custom and Limited interiors boast well-chosen, tasteful cloth upholstery, easy-to-read instrumentation and reclining bucket seats. A folding, split-back rear seat adds utility to hatchback and wagon models, and a time-honored Buick feature—the extensive menu of available equipment—permits the Skyhawk picture to be completed in a wide variety of ways.

By every automotive measure, the Skyhawk line of Buicks is impressive. From a custom-ordered performance coupe to a practical Custom Coupe designed for business use, to a family sedan or wagon, these Buicks represent all the good qualities you've come to expect from every car that bears our name.

► Four Touring Options, including a Turbo Package, are available for customizing the Skyhawk. A five-speed manual gearbox is included in the Turbo Package.



► Well-positioned, easy-to-read instrumentation adds to the Skyhawk's purposeful interior. An available instrument package includes gages and a tachometer.



Start with the Turbo Package. Beginning with the turbocharged version of the new 2.0-liter overhead-cam four-cylinder engine with multi-port fuel injection, this package includes a full array of performance equipment. There's a slick-shifting five-speed gearbox, the taut and terrific Gran Touring suspension, a 3.6:1 transaxle ratio, sporty cast aluminum wheels and Eagle GT blackwalls, a red-lift instrument cluster and hood with "turbo" badging.

If the available naturally aspirated 2.0-liter overhead-cam four-cylinder is sufficient for your needs, the "T" Package will deliver the Gran Touring suspension, a leather-wrapped steering wheel and aluminum wheels mated to Eagle GT tires.

► The Skyhawk Sport Hatchback's aggressive, aerodynamic profile can be complemented with a turbocharged overhead-cam engine.



Models

Skyhawk Custom	Coupe S27	Sedan 569
Skyhawk Limited	Coupe T27	Sedan T69
Skyhawk Sport	Hatchback S77	

Special Option Packages

T Package – Includes: Gran Touring suspension; 14" aluminum wheels; steel-belted, radial-ply Eagle GT blackwall tires (P205/60R14); leather-wrapped sport steering wheel; T ornamentation.

Turbo Package – Includes: 2.0-litre MFI turbo engine; 5-speed manual transmission; Gran Touring suspension, P205/60R14 Eagle GT tires, 14" aluminum wheels, 3.61 ratio transaxle; Turbo hood with turbo emblem; instrument cluster with custom instrumentation and red backlighting, leather-wrapped sport steering wheel.

Exterior Sport Package (Coupes/Hatchback) – Includes: Turbo hood; blackout treatment on door handle and locks, headlamps, roof drip molding, rocker panels, wheel opening molding, belt reveal, body-side and side window reveal moldings, mirrors, fixed-mast antenna and bumper, amber park and turn lamps, fog lamps. Available in 5 exterior colors.

Interior Sport Package (Coupes/Hatchback) – Includes: Easy-entry front seat; custom instrument panel cluster with red backlighting and trip odometer, front and rear custom seats; black and gray interior with red striping; sport steering wheel.

Powertrains

Engine	Transmission
2.0-litre L-4 with Electronic Fuel Injection (standard)	4-speed Manual (standard) Automatic (available)
2.0-litre L-4 with Electronic Fuel Injection and Overhead Cam (available)	5-speed Manual with Overdrive (available) Automatic (available)
2.0-litre Turbo L-4 with Multi-port Fuel Injection and Overhead Cam (available)	5-speed Manual with Overdrive (available) Automatic (available)

Refer to the EPA mileage estimate and engine supplement chart included with this catalog.

Exterior Colors

White	Light Blue Metallic
Silver Metallic	Dark Blue Metallic
Gray Metallic	Medium Rosewood Metallic
Black	Dark Rosewood Metallic
Cream Beige	Red
Light Brown Metallic	Bright Blue Metallic

Dimensions

Inches unless otherwise noted	Custom, Limited Coupes	Custom, Limited Sedans	Sport Hatchback
Length	179.3	181.3	179.3
Width	65.0	65.0	66.6
Height	54.0	54.0	51.9
Wheelbase	101.2	101.2	101.2
Front Tread	55.6	55.6	55.5
Rear Tread	55.2	55.2	55.2
Interior Front			
Legroom	42.2	42.2	42.2
Headroom	37.7	38.6	37.6
Shoulder Room	53.7	53.7	52.9
Hip Room	52.8	49.1	52.8
Interior Rear			
Legroom	31.8	34.3	31.8
Headroom	36.7	38.0	36.4
Shoulder Room	52.6	53.6	52.0
Hip Room	49.8	49.0	48.6
Trunk Volume	12.6 cu. ft.	13.5 cu. ft.	36.5 cu. ft.
Fuel Tank Capacity	13.6 gallons	13.6 gallons	13.6 gallons



Wheels/
Wheelcovers

- Deluxe wheelcover
- Turbine wheelcover
- Styled hubcap with trim ring
- 14" aluminum wheel (Turbo)
- 13" aluminum wheel
- 14" aluminum wheel (T Package)

- Wire wheelcover

Steering Wheels

- Custom wheel
- Limited wheel
- Sport wheel
- Leather-wrapped sport wheel (T Package)
- Leather-wrapped sport wheel

Radios

See standard and available equipment listings

Engines

- 2.0-litre L-4
- 2.0-litre OHC L-4
- 2.0-litre Turbo with MFI

Standard Equipment

- Acoustic Insulation Package (Limited)
- Antenna – fixed-mast
- Armrest – front-seat, mounted on console (Limited)
- Battery – Delco Freedom II Plus
- Belts and Buckles – color-coordinated seat and shoulder
- Brakes – low-drag power front disc/rear drum
- Bumper Guards – front
- Carpet – load floor area (Sport)
- Carpeting – cut-pile front and rear
- Coil Springs – computer-selected
- Coin Holder – located in instrument panel with cover
- Console – full-length operating
- Defoggers – front, side window outlets
- Drive – front-wheel
- Electronic Warning Tone – seal-belt and ignition key
- Engine – 2.0 litre EFI
- Frames – door and window, black with bright trim (Custom/Limited)
- Glove Compartment Lock
- Headlamps – concealed (Sport/Limited Coupe)
- Headlamps – tungsten-halogen
- Headrests – adjustable front-seat
- Hood Lock – inside release
- Horns – dual (Limited)
- Instrument Gages – (includes temperature, voltmeter, oil and trip odometer) (Limited)
- Lamp – high-mounted stop
- Light – shift indicator with manual transmission
- Lights – door-operated dome, instrument panel courtesy, ashtray, glove box, trunk or rear compartment and engine compartment
- Mirror – styled black, outside, rearview, left manual
- Moldings – bright wheel opening and belt reveal (Custom/Limited)
- Moldings – bright roof drip
- Moldings – rocker-panel (Limited)
- Multi-function Control Lever – turn signal, headlamp high/low beam and windshield wiper/washer control
- Paint – Plastisol protection
- Radio – Delco push-button AM with dual front speakers (radio may be deleted for credit) (L)
- Seat – easy-entry front-passenger (Limited Coupe)
- Seats – reclining cloth buckets, driver and passenger (Custom/Sport)
- Seats – reclining limited-level cloth bucket driver and passenger (Limited)
- Seatback – split, folding rear (Sport)
- Steering – manual (rack-and-pinion)
- Steering Wheel – custom (Custom/Sport)
- Steering Wheel – limited (Limited)
- Strap – front-passenger assist (rear passenger on Sedan)
- Struts – gas-wood and hatch

- Suspension – front independent MacPherson strut
- Tail lamps – smoked lens (Sport/Limited Coupe)
- Tire – compact spare
- Tires – steel-belted, radial-ply, all-season blackwall (P175/60R13)
- Transmission – 4-speed manual floor-mounted shift
- Wheelcovers – deluxe (Custom/Limited)
- Wheelcovers – turbine (Sport)
- Windows – manual swing-out rear quarter (Coupe/Sport)
- Windows – roll-down rear-door (Sedans)
- Wipers – 2-speed

Available Equipment

Air Conditioning

- Air conditioner

Axle

- 3.43 axle ratio

Battery

- Heavy-duty battery

Cruise Control

- Electronic cruise control

Defogger

- Electric rear-window defogger

Engines

- 2.0-litre EFI OHC L4 engine
- 2.0-litre MFI turbocharged L4 engine
- California assembly line emission equipment and testing (required in California)
- Engine block heater
- Engine block heater cord delete
- Heavy-duty radiator

Floor Coverings

- Front carpet savers
- Rear carpet savers
- Front carpet savers with inserts
- Rear carpet savers with inserts

Glass

- Soft-Ray tinted glass

Instrumentation

- Headlamps on warning chime
- Dual horns (std. on Limited)
- Instrument gages (includes temperature, voltmeter, oil, trip odometer) (std. on Limited)
- Instrument gages (includes temperature, voltmeter, oil, tachometer and trip odometer)
- Trip odometer (std. on Limited)

Lights

- Front-seat reading lamps
- Concealed headlamps (Custom models and Limited Sedans) (smoked tail lamp lens included)

Locks

- Electric door locks
- Remote electric trunk/hatch lock release

Mirrors

- Styled, black remote-control outside mirrors (left remote, right manual)
- Lighted visor vanity mirror (passenger)

Moldings

- Black rocker panel molding (Sport)
- Black wheel opening moldings (Sport)
- Narrow, bright rocker panel moldings (Custom)
- Black door-edge guards (Sport)
- Bright door-edge guards (Custom, Limited)
- Designers' Accent paint
- Lower Accent Paint-Gray (Coupes/Sport)

Paint

- Designers' Accent paint
- Lower Accent Paint-Gray (Coupes/Sport)

Radios

- Fixed-mast antenna standard unless power antenna ordered
- ETR AM-FM stereo with seek and scan (2)
- ETR AM-FM stereo with seek and scan and clock (3)
- ETR AM-FM stereo with seek and scan, cassette tape, auto reverse and clock (4)
- Graphic equalizer, cassette tape, ETR AM stereo – FM stereo with seek and scan auto reverse with search/repeat and clock (5)
- Radio delete (front speakers not deleted)
- Rear dual extended-range speakers
- Concert Sound II speaker system
- Automatic power antenna
- Automatic power antenna (black mount)

Seats

- 6-way power seat (driver)
- Easy-entry seat (Custom Coupe/Sport)
- 4-way manual seat adjuster (driver)
- Front console-mounted armrest (std. on Limited)
- Acoustic insulation package (std. on Limited)
- Hatch window washer and wiper (Sport)
- Luggage rack – black
- Luggage rack – bright
- Rear compartment security cover (Sport)
- Rear-deck spoiler (Sport)
- Rear-window louvered sunshield (Sport)
- Rear window louvered sunshield (Sport)
- Front license plate mounting

Steering

- Power steering

Steering Wheels

- Tilt steering column
- Sport steering wheel
- Leather-wrapped sport steering wheel

Stripes

- Body-side Stripes (Stripes should match interior trim color whenever possible)

Sunroof

- Flip-open, Vista-Vent removable glass sunroof

Suspensions

- Gran Touring suspension

Tires

- Steel-belted, radial-ply, all-season, whitewall tires (P175/60R13)
- Steel-belted, radial-ply, all-season, blackwall tires (P195/70R13)
- Steel-belted, radial-ply, all-season, whitewall tires (P195/70R13)
- Steel-belted, radial-ply, all-season, white letter tires (P195/70R13)
- Steel-belted, radial-ply, white letter tires (P205/60R14)

Touring Options

- Interior Sport Package (Coupes/Sport)
- Exterior Sport Package (Coupes/Sport)
- T Package
- Turbo Package

Transmissions

- 5-speed manual overdrive transmission
- Automatic transmission

Windows

- Power windows
- Wheels and Wheelcovers
- Styled hubcap with trim ring (N.A. on Sport)
- 13" aluminum wheels (4)
- Custom locking wheel covers

Wipers

- 2-speed windshield wiper with low-speed delay feature

Tire chains should not be used on a Skyhawk equipped with P205/60R14 tires because they may cause damage to the vehicle.



N.A. – not available
std. – standard
Receives C-Quam™ AM stereo broadcasts. Most AM stereo stations across the country broadcast in C-Quam but some do not. Check with your local stations for compatibility in your area.



Electra Estate Wagon



Once again, the Buick Electra Estate Wagon stands as uncompromising proof that a lofty level of luxury and a substantial cargo-carrying capability are marvelously compatible. The qualities of a fine car can be—and in this case have been—transferred to a fine wagon, one that we consider to be the finest luxury station wagon available.

The Electra Estate Wagon's retention of Buick's justly-famed ride qualities and a high level of luxury appointments become particularly remarkable when one examines the vehicle's capacity for handling both passengers and cargo—either separately or in combination.

Classic Accommodations

Consider the passenger accommodations. In the driver's compartment, comfortable 55/45 notchback seats provide roomy seating for three. The seating throughout is done in luxurious velour, with one thoughtful exception. Available at no additional charge is a luxury velour front seat with vinyl in the rear—where cargo and children often cause increased wear. This no-cost option has proved popular with those who lead the active life.

The Electra Estate Wagon provides roomy seating for six in its standard trim, a capacity expandable to eight with the addition of the optional third seat, done in color-coordinated vinyl.

No matter which passenger seating configuration you choose, the cargo

capacity, with rear seats stowed, remains a spacious 87.9 cubic feet, with a width of over four feet at the rear door, a height of more than 28 inches, and a maximum length of 90.2 inches. For ease of use, the tailgate opens down or swings out.

A Wagon with Muscles

The Electra Estate Wagon draws power from a smooth, muscular 5.0-litre V-8 with four-barrel carburetion. This popular and proven power source drives through a four-speed automatic transmission equipped with overdrive.

On the extensive menu of standard luxury and convenience accommodations, you will find a tilt steering column, electric door locks, power windows, and a remote electric lock for the tailgate. But those are only the beginning.

The Electra Estate Wagon's standard equipment manifest also offers air conditioning, tinted glass, a roof-mounted luggage rack for cargo-carrying convenience, aluminum alloy wheels and a 2-way power seat for the driver.

There are many more standard features, all geared toward making the Electra Estate Wagon the ultimate in large-capacity luxury motoring. And, as you would expect, there is a listing of optional equipment and accessories available.

Choose Your Comforts

To enhance the enjoyment of your Electra Estate Wagon, you may specify such available options as Electronic Touch Climate Control, electronic cruise control, automatic level control to adjust for heavy loads, heavy-duty engine and transmission cooling—useful in towing situations—and much, much more.

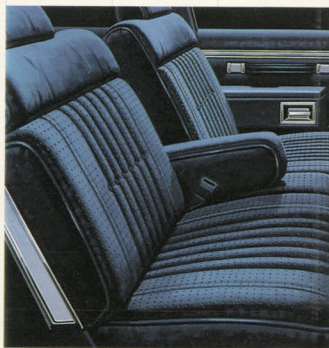
Luxury. Beauty. Comfort. Capability. Four words that accurately describe the elegant Buick Electra Estate Wagon.

► Luxurious, comfortable, individually adjustable 55/45 front seats in the Electra Estate Wagon.



▲ The Electra Estate Wagon incorporates the ultimate in Buick luxury amenities in a full-size wagon replete with judiciously applied automotive technology.

▼ The LeSabre Estate Wagon provides tasteful, well-appointed transportation for up to eight passengers when the available third seat is specified.



◀ LeSabre Estate Wagon offers available 55/45 front seats. Cloth front, vinyl rear seating available at no extra charge.

LeSabre Estate Wagon

The LeSabre Estate Wagon for 1987 adds an overlay of luxury to traditional family transportation. Epitomizing the best qualities of the full-size wagon as interpreted by Buick, the LeSabre Estate Wagon offers room, comfort, luxury and cargo space in an automobile that is classic in appearance.

Real V-8 Performance

The front-engine/rear-drive design, unique to the Estate Wagon in the LeSabre series, is powered by a strong 5.0-litre, four-barrel-carbureted V-8. Coupled to the smooth-shifting four-speed automatic overdrive transmission, this popular engine delivers smooth, dependable performance.

Inside, the LeSabre's cargo-hauling capacity is 87.9 cubic feet of handsomely finished space. The tailgate opens in either of two ways and the rear seats fold flat for optimum usability of cargo space. A power window and remote power lock for the tailgate allow operation from the driver's seat.

A Choice of Seating

The LeSabre Estate Wagon offers a number of available seating arrangements. There is a choice between vinyl or cloth upholstery, and the two materials may be mixed to provide a pleasing combination of luxury in the front and practicality in the rear. In standard form, the LeSabre Estate Wagon seats six adults in roomy

comfort. A third seat, in vinyl, increases this capacity to eight, and can be added from the available equipment list.

The LeSabre's traditional Buick stylishness is complemented by a well-engineered automobile. The LeSabre Estate Wagon is equipped with low-drag front disc/rear drum brakes, computer-selected coil spring suspension, and a full-perimeter frame. Steel-belted radial-ply whitewall tires and aluminum alloy wheels are also standard and add to the driver's overall feeling of confidence.

To ensure that the Estate Wagon delivers every element of the Buick ride quality, each component of the standard heavy-duty suspension has been engineered with passenger comfort in mind. The result is what you would expect: Buick smoothness.

Serenity on Wheels

The LeSabre reputation for being a fully and thoughtfully equipped automobile continues for 1987. Such useful features as air conditioning, Soft-Ray tinted glass and 2-speed wipers are standard. Extensive acoustic insulation and thick, rich carpets combine for a serene atmosphere underway.

Those who choose the LeSabre Estate Wagon will find an available equipment list that is equally extensive. Electronic Touch Climate Control makes air conditioning a breeze to operate. A full selection of color-coordinated protective body moldings adds to an already elegant exterior — and provides protection from annoying nicks and bumps. A selection of AM-FM radios and cassette players, including a graphic equalizer option, is available for driver and passenger enjoyment.

The 1987 LeSabre Estate Wagon is a choice that's a distinct pleasure to make. Buick grace and style in a full-sized, value-filled package.



Models

Electra Estate	Wagon V35
LeSabre Estate	Wagon R35

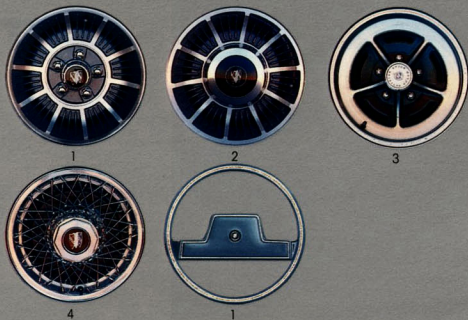
Power team

Engine	Transmission
5.0-litre 4-bbl. V-8 (standard)	Automatic with Overdrive (standard)

Refer to the EPA mileage estimate and engine supplement chart included with this catalog.

Exterior Colors

White	Cream Beige
Silver Metallic	Light Brown Metallic
Gray Metallic	Brown Metallic
Black	Rosewood Metallic
Light Blue Metallic	Dark Red Metallic
Dark Blue Metallic	Light Sage Metallic



Dimensions

Inches unless otherwise noted	LeSabre Estate Wagon	Electra Estate Wagon
Overall		
Length	220.5	220.5
Width	79.3	79.3
Height	59.3	59.3
Wheelbase	115.9	115.9
Front Tread	62.2	62.2
Rear Tread	64.0	64.0
Interior Front		
Legroom	42.4	42.2
Headroom	39.6	39.6
Shoulder Room	60.9	60.9
Hip Room	55.1	55.1
Interior Rear		
Legroom	37.2	37.8
Headroom	39.3	39.3
Shoulder Room	59.5	60.9
Hip Room	55.0	55.0
Cargo Volume	879 cu. ft.	879 cu. ft.
Fuel Tank Capacity	22.0 gallons	22.0 gallons
Tailgate Opening		
Width	48.2	48.2
Height	28.7	28.7
Maximum Cargo Length at Floor		
Length	90.2	90.2

Standard Equipment

- Air Conditioning
- Antenna — fixed-mast
- Applique — woodgrain vinyl (includes door guards) (Electra)
- Battery — Delco Freedom II Plus
- Belts and Buckles — color-coordinated seat and shoulder
- Brakes — low-drag power front disc/rear drum
- Bumper Guards — front and rear
- Bumper Protective Strips — front and rear
- Carpeting — cut-pile front, rear and load floor
- Chassis Springs — computer-selected
- Door-edge Guards (Electra)
- Door Locks — power (Electra)
- Electronic Warning Tone — seat belt and ignition key
- Engine — 5.0-litre 4-bbl V-8
- Glass — Soft-Ray tinted
- "Headlamps on" Warning Indicator and Chime (Electra)
- Hood Lock — inside release
- Horns — dual
- Lamp — high-mounted stop
- Light — warning "tailgate ajar"
- Lights — door-operated dome, instrument panel floodlighting, front ashtray, glove box, load area, engine compartment and underdash courtesy
- Mirrors — styled chrome outside rearview (left remote, right manual)
- Moldings — wheel opening, side and tailgate window reveal
- Moldings — bright windshield and roof drip
- Moldings — tailgate and narrow rocker panel
- Moldings — door and window frame
- Moldings — center pillar applique (Electra)
- Multi-function Control Lever — turn signal, headlamp high/low beam and windshield wiper/washer controls
- Paint — Plastisol protection
- Radio — Delco push-button AM with dual front speakers (may be deleted for credit) (LeSabre) (1)
- Radio — Delco ETR AM-FM stereo with seek and scan and clock (may be deleted for credit) (Electra) (2)
- Roof Rack (Electra)
- Seat — cloth or vinyl notaback bench (LeSabre)
- Seats — cloth or vinyl 55/45 notaback (Electra)
- Seat — 2-way power (driver) (Electra)
- Steering — power
- Steering Column — tilt (Electra)
- Steering Wheel — limited
- Storage Compartment — lockable, hidden
- Suspension — heavy-duty coil-spring — front and rear
- Tailgate — two-way with power window (LeSabre)

Wheels/

Wheelcovers

1. LeSabre aluminum wheel
2. Electra aluminum wheel
3. Chrome-plated wheel
4. Wire wheelcover

Steering Wheel

1. Limited wheel

Radios

See standard and available

equipment listings

Engine

1. 5.0-litre V-8

- Tailgate — two-way with power window, remote-control electric lock (Electra)
- Tire — compact spare
- Tires — steel-belted, radial-ply, all-season whitewall (P225/75R15)
- Transmission — automatic with overdrive
- Wheels — Aluminum (4)
- Windows — power (Electra)
- Wipers — 2-speed
- Woodgrain — vinyl applique (Electra)

Available Equipment

Air Conditioning

- Electronic Touch Climate Control air conditioning

Axles

- 3.08 axle ratio
- 3.23 axle ratio

Battery

- Heavy-duty battery

Cruise Control

- Electronic cruise control

Defogger

- Electric rear-window defogger

Engines

- California assembly line emission equipment and testing (required in California)
- Engine block heater
- Heavy-duty engine and transmission cooling

Floor Coverings

- Front carpet savers with inserts
- Rear carpet savers with inserts

Instrumentation

- Four-note horn
- Trip odometer (LeSabre)

Lights

- Door courtesy and warning lights
- Illuminated driver door lock and interior light control
- Twilight Sentinel headlamp control
- Cornering lamps
- Tungsten-halogen headlamps
- Front light monitors
- Lamp and indicator group (consists of "Headlamps on," low fuel and low windshield washer fluid indicators and front seat reading lamps) (LeSabre)
- Lamp and indicator group (consists of trip odometer, front-seat reading lamps, low fuel and low windshield washer fluid) (Electra)

Locks

- Electric door locks (LeSabre)
- Automatic electric door locks
- Remote-control electric tailgate lock (LeSabre)

Mirrors

- Lighted visor vanity mirror (passenger)
- Lighted visor vanity mirror (driver)
- Chrome, electric outside mirrors (left and right remote)
- Chrome, remote-control outside mirrors (left and right)

Moldings

- Color-coordinated protective body-side moldings
- Belt reveal molding
- Bright door-edge guards (LeSabre)
- Wide rocker, front and rear fender lower panel moldings (Electra)
- Woodgrain vinyl applique (LeSabre)
- Woodgrain applique delete (Electra)
- Exterior molding package (consists of wide rocker panel, front and rear fender and belt reveal moldings) (LeSabre)

Radios

- Fixed-mast antenna standard unless power antenna ordered
- ETR AM-FM stereo with seek and scan and clock (LeSabre) (2)
- Cassette tape and ETR AM-FM stereo with seek and scan, auto reverse and clock (3)
- Graphic equalizer, cassette tape and ETR AM stereo *FM stereo with seek and scan, auto reverse with search/repeat and clock (4)
- CB radio
- Radio delete (front speakers not deleted)
- Automatic power antenna
- Triband power antenna

Seats

- Electric seatback recliner (driver) (55/45 seats required)
- Electric seatback recliner (passenger)
- 2-way power seat (driver) (55/45 seats required) (Electra)
- 6-way power seat (passenger) (55/45 seats required)
- Manual seatback recliner (passenger) (55/45 seat required)
- 6-way power seats (driver and passenger) (55/45 seats required)
- 6-way power seat (driver) (with 55/45 seat)
- Third seat (vinyl)

Special Equipment

- Air deflector
- Roof rack (LeSabre)
- Front license plate mounting

Steering Wheel

- Tilt steering column (LeSabre)

Suspensions

- Automatic level control
- Limited-slip differential

Tires

- Self-sealing tires

Wheels and Wheelcovers

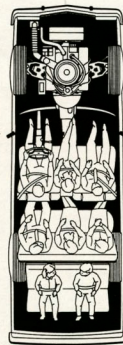
- Chrome-plated wheels (4)
- Custom locking wire wheelcovers

Windows

- Power windows (LeSabre)

Wipers

- 2-speed windshield wiper with low-speed delay feature



*Receives C-Quam® AM stereo broadcasts. Most AM stereo stations across the country broadcast in C-Quam® but some do not. Check with your local stations for compatibility in your area.

▼ The Century Estate Wagon offers front-wheel-drive technology in a convenient, easy to drive configuration. Surprisingly, it can seat eight passengers with an available third seat.



◀ Century Estate Wagon has 55/45 front seats standard. Luxury touches by the score.

Century Wagon

For 1987, the Century Wagon blends the up-to-date good looks and front-wheel-drive technology of the popular Century series with the space and versatility of a mid-size station wagon. The result is a modern approach to transportation that gives the active wagon buyer a stylish, agile automobile that makes driving a pleasurable undertaking.

The Century Wagon is offered as a Century Custom Wagon, with the emphasis on active living and hard-working utility, or as the Century Estate Wagon, with luxury touches by the score.

Pick Your Power

Both Century Wagons are powered by the responsive 2.5-litre Tech IV engine equipped with electronic fuel injection as standard power. The standard transmission is a three-speed automatic. Two available engines allow you to choose a power level complementing your own driving style. A 2.8-litre with MFI constitutes the first advance in available horsepower, followed by the high-performing 3.8-litre V-6 with sequential-port fuel injection and quiet, low-friction roller valve lifters – the most recent version of the powerful naturally aspirated V-6 offered in a Buick.

The Luxury of Room

Surprisingly perhaps, eight full-size adults can seat themselves in the contemporary-sized Century Wagon. An available rearward-facing rear seat, with room for two, augments the standard two-seat arrangement that seats six. The Century Wagon

seats its passengers on comfortable, roomy cloth or vinyl seats both front and rear. A cloth front seat and durable, easy-to-clean vinyl second seat can be specified at no additional cost. The luxury of quality carpeting completes the interior ambiance.

Carpeting also covers the easy-to-reach cargo area, which contains a generous 74.4 cubic feet of usable space. A split-folding second seat-back adds to the versatility of the cargo area, allowing some seating capacity to be retained while still carrying a considerable amount of cargo. The tailgate swings up for ease of loading at the rear. (Small items may be loaded through the opened rear window.) The cargo area floor has a maximum width of over five feet and a maximum length of over six feet.

The Century Wagon's sloping, aerodynamic front end has the crisp, clean look characteristic of great European road cars, and its low-profile rectangular headlamps keep the Century Wagon in the forefront of contemporary styling and design.

The Technology of Comfort

A full list of standard features and equipment allows Century Wagons to meet engineering and convenience criteria. A transverse-mounted engine and front MacPherson strut suspension are standard, as are low-drag, power front disc brakes and precise rack-and-pinion power steering. Also standard to Century Wagons are all-season steel-belted radial-ply tires.

In the convenience and comfort realm, the Century Wagon meets the highest Buick standards. Add the wide selection of available equipment and the Century Wagon becomes even more attractive as a practical, versatile, enjoyable vehicle.



Models

Century Custom	Wagon H35
Century Estate	Wagon L35

Powertrains

Engine	Transmission
2.5-litre Tech IV with Electronic Fuel Injection (standard)	Automatic (standard)
2.8-litre V-6 with Multi-port Fuel Injection (available)	Automatic (standard) Automatic with Overdrive (available)
3.8-litre V-6 with Sequential-port Fuel Injection (available)	Automatic with Overdrive (available)

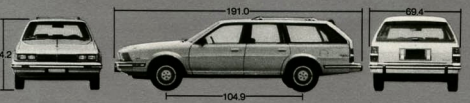
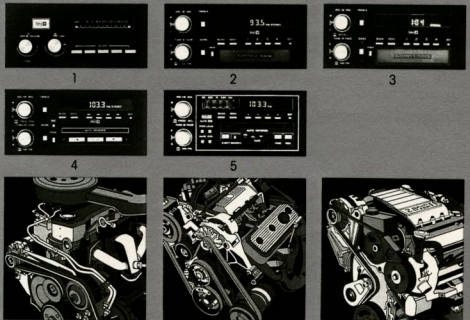
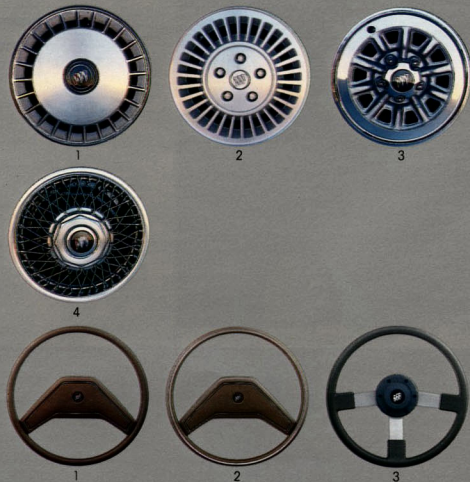
Exterior Colors

Refer to the EPA mileage estimate and engine supplement chart included with this catalog.

White	Cream Beige
Silver Metallic	Light Brown Metallic
Gray Metallic	Brown Metallic
Black	Rosewood Metallic
Light Blue Metallic	Dark Red Metallic
Dark Blue Metallic	Light Sage Metallic

Dimensions

Inches unless otherwise noted	Custom Wagon	Estate Wagon
Overall		
Length	191.0	191.0
Width	69.4	69.4
Height	54.2	54.2
Wheelbase	104.9	104.9
Front Tread	58.7	58.7
Rear Tread	56.8	57.0
Interior Front		
Legroom	42.1	42.1
Headroom	38.6	38.6
Shoulder Room	56.2	56.2
Hip Room	52.4	52.4
Interior Rear		
Legroom	34.8	34.8
Headroom	38.9	38.9
Shoulder Room	56.2	56.2
Hip Room	52.7	52.7
Cargo Volume Index	74.4 cu. ft.	74.4 cu. ft.
Fuel Tank Capacity	15.7 gallons	15.7 gallons
Tailgate Opening		
Width	42.6	42.6
Height	28.7	28.7
Maximum Cargo Length at Floor		
Length	75.4	75.4



Standard Equipment

- Antenna – fixed-mast
- Battery – Delco Freedom II Plus
- Belts and Buckles – color-coordinated seat and shoulder
- Brakes – low drag power front disc/rear drum
- Bumpers – integrated body-color
- Bumper Protective Strips – front and rear
- Bumper Guards – front and rear
- Carpeting – cut-pile, front and rear
- Carpeting – load area
- Chassis Springs – computer-selected
- Defogger – front, side-window outlets
- Drive – front-wheel
- Electronic Warning Tone – seat belt and ignition key
- Engine – 2.5-litre Tech IV EFI (includes heavy-duty battery)
- Engine Mounts – hydraulic, tuned
- Glove Compartment Lock
- Headlamps – tungsten-halogen
- “Headlamps-on” Warning Tone
- Headrests – adjustable front-seat
- Hood Lock – inside release
- Horns – dual
- Lamp – high-mounted stop
- Lights – instrument panel courtesy, map, ashtray, glove box, load area and engine compartment
- Mirror – styled black, outside rearview, left manual
- Moldings – bright/wheel opening, front and rear
- Moldings – bright/belt reveal
- Moldings – pillar, roof drip and black door frame
- Moldings – narrow rocker panel (Custom)
- Moldings – wide rocker panel and hood windsplit (Estate)
- Multi-function Control Lever – turn signal, headlamp high/low beam and windshield wiper/washer controls
- Paint – Plastisol protection
- Radio – Delco push-button AM with dual front speakers (may be deleted for credit) (1)
- Seat – rear, split-folding seatback
- Seats – cloth or vinyl notchback bench (Custom)
- Seats – cloth 55/45 notchback (Estate)
- Steering – power (rack-and-pinion)
- Steering Wheel – custom (Custom)
- Steering Wheel – limited (Estate)
- Storage Compartment – load area, floor-latched
- Struts – gas hood and tailgate
- Suspension – front, independent MacPherson Strut
- Tire – compact spare
- Tires – steel-belted, radial-ply, all-season blackwall (P185/75R14)
- Transmission – automatic
- Wheelcovers – deluxe
- Wipers – 2-speed

Wheels/

Wheelcovers

1. Deluxe wheelcover

2. 14" aluminum wheel

3. Styled hubcap with trim ring

4. Wire wheelcover

Steering Wheels

1. Custom wheel
2. Limited wheel
3. Sport wheel

Radios

See standard and available equipment listings

Engines

1. 2.5-litre Tech IV
2. 3.8-litre V-6

- with SFI
3. 2.8-litre V-6
- with MFI

Available Equipment

Air Conditioning

- Air conditioner

Battery

- Heavy-duty battery

Console

- Full-length operating console

Cruise Control

- Electronic cruise control

Defogger

- Electric rear-window defogger

Engines

- 2.8-litre MFI V-6 engine
- 3.8-litre SFI V-6 engine
- California assembly line emission equipment and testing (required in California)

Roof

- Engine block heater
- 105-amp Delcotron
- 120-amp Delcotron
- 100-amp Delcotron
- Manual seatback recliner (passenger)
- 6-way power seat
- Third seat (vinyl)

Seats

- Manual seatback recliners (driver and passenger)
- Manual seatback recliner (passenger)
- 6-way power seat
- Third seat (vinyl)

Special Equipment

- Tailgate air deflector
- Roof rack
- Front license plate mounting

Steering Wheels

- Tilt steering column
- Sport steering wheel

Stripes

- Body-side Stripes (Stripes should match interior trim color whenever possible)

Suspension

- Heavy-duty suspension

Tires

- Steel-belted, radial-ply, all-season, whitewall tires (P185/75R14)

Transmission

- Automatic transmission with overdrive

Wheels and Wheelcovers

- Custom locking wire wheelcovers
- Aluminum wheels
- Styled hub cap and trim ring

Windows

- Power windows

Wipers

- Tailgate window wiper and washer
- 2-speed windshield wiper with low-speed delay feature



NA – not available
std. – standard
*Receives C-Quam™ AM stereo broadcasts. Most AM stereo stations across the country broadcast in C-Quam™ but some do not. Check with your local stations for compatibility in your area.



A Buick

we know that no line of station wagons is complete unless it offers buyers one whose chief goal is enjoyment. Our entry in the fun category is called Skyhawk—a front-wheel-drive wagon that combines a high level of sportiness with an equally high level of applied high-technology advances.

Offered as a Custom or a Limited, Skyhawk Wagons provide seating for five, with front bucket seats and a folding split back rear bench seat. The Limited's high-quality, cloth-upholstered bucket seats are made even more comfortable by a folding armrest. The front seats in both the Custom and Limited may be reclined.

The Energetic Approach

Skyhawk's transverse-engine, front-wheel-drive design, in standard trim, offers a peppy 2.0-litre engine with electronic fuel injection. This responsive unit is matched to a four-speed manual gearbox built for energetic performance. Available is a 2.0-litre powerplant of overhead cam design.

The sleek good looks of the Skyhawk are enhanced by the presence of low-profile quad headlamps that allow a low hood line and, consequently, an aerodynamic design. Concealed headlamps are available. Underneath, roadworthiness draws support from independent MacPherson strut front suspension, front stabilizer bar and computer-selected coil springs. Precise rack-and-pinion

steering and power front disc brakes contribute still further to the Skyhawk's performance-oriented underpinnings.

Practical Convenience

On the practical side, a look at the Skyhawk's cargo area reveals a capacity of 64 cubic feet, a space large enough for most undertakings at work or play. Skyhawk Wagons have a one-piece, top-hinged tailgate that swings up and out of the way for ease of access and loading.

Additionally, there's a built-in rear-window air deflector and the rear seatback is a folding, split design that allows the cargo area to handle long objects—skis, for example—and yet retain room for a rear-seat passenger.

Control is at Hand

The Skyhawk is fully instrumented and has a multi-function control lever mounted on the steering column for quick, easy-to-reach operation of such important devices as the wipers and the turn signals. A Delco push-button radio is standard (may be deleted for credit) and a variety of available sound systems is offered, including a system with a graphic equalizer and a four-speaker system that fills the Skyhawk with the sounds you like.

With all its mechanical advantages and creature comforts, the Skyhawk presents a remarkable picture—a wagon that carries passengers and cargo with ease and versatility, at the same time retaining the virtues and rewards of a sports sedan built to Buick performance standards.

Offering a choice between economic practicality and driving excitement—or a combination of the two—presents a difficult problem. A problem skillfully solved by Skyhawk.

► Skyhawk Limited with luxurious, fully reclining front bucket seats provides seating for five.



▲ The Skyhawk Custom or Limited Wagon seats five and provides ample cargo or luggage space. These wagons are efficient, practical and remarkably well-appointed.

Models

Skyhawk Custom	Wagon S35
Skyhawk Limited	Wagon T35

Powertrains

Engine	Transmission
2.0-litre L-4 with Electronic Fuel Injection (standard)	4-speed Manual (standard) Automatic (available)
2.0-litre L-4 with Electronic Fuel Injection and Overhead Cam (available)	5-speed Manual Overdrive (standard) Automatic (available)

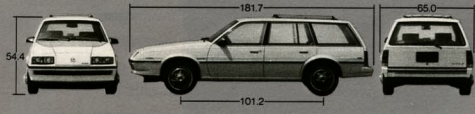
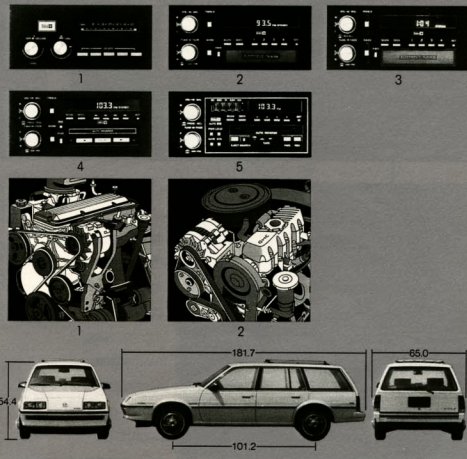
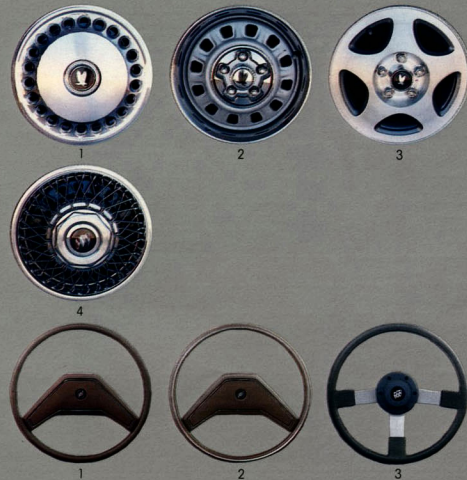
Refer to the EPA mileage estimate and engine supplement chart included with this catalog.

Exterior Colors

White	Light Blue Metallic
Silver Metallic	Dark Blue Metallic
Gray Metallic	Medium Rosewood Metallic
Black	Dark Rosewood Metallic
Cream Beige	Red
Light Brown Metallic	Bright Blue Metallic

Dimensions

Inches unless otherwise noted	Custom Wagon	Limited Wagon
Overall		
Length	181.7	181.7
Width	65.0	65.0
Height	54.4	54.4
Wheelbase	101.2	101.2
Front Tread	55.4	55.4
Rear Tread	55.2	55.2
Interior Front		
Legroom	42.2	42.2
Headroom	38.3	38.3
Shoulder Room	53.7	53.7
Hip Room	49.0	49.0
Interior Rear		
Legroom	33.7	33.7
Headroom	38.8	38.8
Shoulder Room	53.8	53.8
Hip Room	49.2	49.2
Cargo Volume Index	64.4 cu. ft.	64.4 cu. ft.
Fuel Tank Capacity	13.6 gallons	13.6 gallons
Tailgate Opening		
Width	48.3	48.3
Height	30.1	30.1
Maximum Cargo Length at Floor		
Length	67.3	67.3



Standard Equipment

- Acoustic Insulation Package (Limited)
- Air Deflector—rear window (integral)
- Antenna—fixed-mast
- Armrest—front-seat (Limited)
- Battery—Delco Freedom II Plus
- Belts and Buckles—color-coordinated seat and shoulder
- Brakes—low-drag, power front disc/rear drum
- Bumper Guards—front
- Carpeted Load Floor Area
- Carpeting—cut-pile front and rear
- Coil Springs—computer-selected
- Coin Holder—located in instrument panel with cover
- Console—full-length operating
- Defoggers—front, side-window outlets
- Drive—front-wheel
- Electronic Warning Tone—seat belt and ignition key
- Engine—2.0 litre EFI
- Glove Compartment Lock
- Headlamps—tungsten-halogen
- Headrests—adjustable front-seat
- Hood Lock—inside release
- Instrument Gages—includes temperature, voltmeter, oil and trip odometer (Limited)
- Lamp—high-mounted stop
- Light—shift indicator—manual transmission
- Light—warning, "tailgate ajar"
- Lights—door-operated dome, instrument panel courtesy, ashtray, glove box, rear compartment and engine compartment
- Mirror—styled black, outside, rearview, left manual
- Moldings—belt reveal, wheel opening, roof drip, wraparound protective with bright trim black door and window frame, and rocker panel
- Multi-function Control Lever—turn signal, headlamp high/low beam and windshield wiper/washer control
- Paint—Plastisol protection
- Radio—Delco push-button AM with dual front speakers (radio may be deleted for credit) (1)
- Seats—reclining cloth bucket
- Seatback—split, folding rear
- Strap—roof rail assist
- Steering—manual (rack-and-pinion)
- Steering Wheel—custom (Custom)
- Steering Wheel—limited (Limited)
- Struts—gas hood and tailgate
- Suspension—front independent MacPherson strut
- Tailgate—one-piece lift-up
- Tire—compact spare
- Tires—steel-belted, radial-ply, all-season blackwall (P175/80R13)
- Transmission—4-speed manual, floor-mounted shift
- Wheelcovers—deluxe
- Windows—roll-down rear-door
- Wipers—2-speed

Wheels/

Wheelcovers

1. Deluxe wheelcover
2. Styled hubcap with trim ring
3. 13" aluminum wheel
4. Wire wheelcover

Steering Wheels

1. Custom wheel
2. Limited wheel
3. Sport wheel

Radios

See standard and available equipment listings

Engines

1. 2.0-litre L-4
2. 2.0-litre OHC L-4

Available Equipment

Air Conditioning

- Air conditioner

Axle

- 3.43 axle ratio

Battery

- Heavy-duty battery

Cruise Control

- Electronic cruise control

Defogger

- Electric rear-window defogger

Engines

- 2.0-litre OHC EFI L4 engine
- Engine block heater
- Heavy-duty radiator
- California assembly line emission equipment and testing (required in California)

Floor Coverings

- Front carpet savers
- Rear carpet savers
- Front carpet savers with inserts
- Rear carpet savers with inserts

Glass

- Soft-Ray tinted glass

Instrumentation

- "Headlamps on" warning chime
- Instrument gages—includes temperature, voltmeter, oil, trip odometer (std. on Limited)
- Instrument gages—includes temperature, voltmeter, oil, and tachometer
- Trip odometer (std. on Limited)

Lights

- Front-seat reading lamps
- Concealed headlamps

Locks

- Electric door locks
- Remote-control electric tailgate lock

Mirrors

- Styled, black remote-control outside mirrors (left remote, right manual)
- Lighted visor vanity mirror (passenger)

Moldings

- Door-edge guards

Paint

- Designers' Accent paint

Radios

- Fixed-mast antenna standard unless power antenna ordered
- ETR AM-FM stereo with seek and scan (2)
- ETR AM-FM stereo with seek and scan and clock (3)
- Cassette tape and ETR AM-FM stereo with seek and scan, auto reverse and clock (4)
- Graphic equalizer, cassette tape and ETR AM stereo *FM stereo with seek and scan, auto reverse with search/repeat and clock (5)
- Rear dual extended range speakers
- Radio delete (front speakers not deleted)
- Automatic power antenna

Roof

- Roof rack

Seats

- 4-way manual seat adjuster (driver)

- 6-way power seat (driver)

Special Equipment

- Acoustic insulation package (std. on Limited)
- Front license plate mounting
- Rear compartment security cover

Steering

- Power steering

Steering Wheels

- Tilt steering column
- Sport steering wheel

Stripes

- Body-side Stripes (stripes should match interior trim color whenever possible)

Suspension

- Gran Touring suspension

Tires

- Steel-belted, radial-ply, all-season, whitewall tires (P175/80R13)
- Steel-belted, radial-ply, all-season, blackwall tires (P195/70R13)
- Steel-belted, radial-ply, all-season, whitewall tires (P195/70R13)
- Steel-belted, radial-ply, all-season, white letter tires (P195/70R13)

Transmissions

- 5-speed manual overdrive transmission
- Automatic transmission

Wheels and Wheelcovers

- Aluminum wheels (4)
- Custom locking wire wheelcovers
- Styled hubcap with trim ring

Windows

- Power windows

Wipers

- Tailgate window wiper and washer
- 2-speed windshield wiper with low-speed delay feature



std.—standard
 *Receives C-Quam **AM stereo broadcasts. Most AM stereo stations across the country broadcast in C-Quam * but some do not. Check with your local stations for compatibility in your area.

It will come as no surprise to you to learn that we very much want you to become a Buick owner. That, indeed, is the sole purpose of the catalog you hold in your hand. But more than that, we want you to become the owner of a Buick that will please you. A car that fulfills your individual transportation needs.

Furthermore, and we are the first to realize that this is asking a lot, we want you to enjoy *buying* your Buick as much as you will enjoy owning and driving it.

At Buick, we conduct a significant amount of research aimed at learning more about the buyer's attitudes toward purchasing a new car. We have learned that buying a car can be a bewildering, intimidating, unpleasant experience.

At Buick, we don't think that's the way it should be.

We believe that buying a car should be a rewarding, even exhilarating, undertaking. We call this the *Buick experience* and we introduce you to it the moment you start your search for your new automobile.

The Buick Experience

We think there's a difference, a big difference, between buying a car and buying a Buick. We think you will sense this the minute you enter a Buick showroom. The Buick showroom is designed to encourage intelligent, informed decisions. And Buick salespersons are trained to aid this process, not circumvent it. They are courteous, well-informed professionals, important elements of the Buick experience.

The quest for information, unquestionably, represents the most difficult part of buying a car. How much do cars cost? What equipment is standard? What options and accessories are available at extra cost? How *much* extra cost? In short, what choices are available to you within the price boundaries you have established? These and other questions are tailor-made for EPIC, an electronic contributor to the Buick experience.

The EPIC Experience

EPIC (Electronic Product Information Center) is a computer information system installed in selected Buick dealerships. Its job is to help you choose the proper Buick. Although

sophisticated, EPIC is simplicity itself. Only if your new Buick is right in every respect when you take that first drive home. Knowing that even one loose screw rolling on the floor can diminish this experience, Buick has established a procedure called Letter-Perfect Delivery.

Letter-Perfect Delivery is intended to assure you that every last detail of your new Buick is the way it should be. Nothing out of place. Nothing loose. Nothing wrong. Before you pick up your new Buick, it will have been scrutinized by not one but two detail-conscious inspectors.

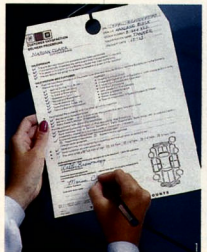
The dealer representative will take you through a lengthy checklist not unlike that used by airline pilots. You'll learn where everything is located and the way everything operates. You will be briefed on the car's scheduled maintenance agenda and on the provisions of the warranty. If you like, this orientation will even include an instruction ride during which you will operate the car under normal driving conditions — one more opportunity to see that everything is right. No spots on the upholstery, no disturbing noises under the hood, no loose screw on the floor.

The Human Element

As easy as EPIC is to use, however, we know that most buyers appreciate a more familiar kind of assistance, in the form of a salesperson's guidance and counsel. At Buick, we feel that our dealers have some of the very best salespersons in the world, and we work constantly with the dealer organization both to maintain this level of expertise and to improve on it. The helpful, courteous, knowledgeable salesperson is another integral part of the Buick experience.

Letter-Perfect Delivery

Your first drive in a new Buick should take a prominent place in your diary of pleasant experiences. The feel of a well-engineered new car — with you behind the wheel. The crisp smell of newness. Even the admiring glances from the neighborhood. All these are part of the Buick experience. But



only if your new Buick is right in every respect when you take that first drive home. Knowing that even one loose screw rolling on the floor can diminish this experience, Buick has established a procedure called Letter-Perfect Delivery.

Letter-Perfect Delivery is intended to assure you that every last detail of your new Buick is the way it should be. Nothing out of place. Nothing loose. Nothing wrong. Before you pick up your new Buick, it will have been scrutinized by not one but two detail-conscious inspectors.

The dealer representative will take you through a lengthy checklist not unlike that used by airline pilots. You'll learn where everything is located and the way everything operates. You will be briefed on the car's scheduled maintenance agenda and on the provisions of the warranty. If you like, this orientation will even include an instruction ride during which you will operate the car under normal driving conditions — one more opportunity to see that everything is right. No spots on the upholstery, no disturbing noises under the hood, no loose screw on the floor.

The Service Experience

A vital part of the Buick experience concerns servicing and repair. Quick, effective repair service when it's needed is an absolute must if owner satisfaction is to remain at a high level. Hence, Buick's position on service: Fix it right the first time.

Today's automobiles, with their complex components and sophisticated electronics, require Buick service technicians to participate in a training program that never ends, a program that continually teaches the latest diagnostic and repair techniques.

Computer technology occupies a major place in the modern service department as well as in manufacturing and testing. There's still no substitute for the basic skills and tools, but computer terminals and oscilloscopes have taken their places alongside wrenches and screwdrivers on the workbench. More and more often, the service technician relies on these new helpers to make his work easier, more efficient and more reliable.

Each of Buick's sales zones across

the country is equipped with a mobile computer terminal called the Diagnostic Data Recorder. A service technician can attach the DDR to the on-board engine computer and produce an immediate, *written* diagnosis of a problem. This problem identification is a significant step beyond a simple display of symptoms.

The DDR helps solve one of the traditional service bugaboos: the problem that goes into hiding the moment you enter the service department.



The DDR eliminates this dilemma by being installed in the car, which is then driven until the symptom reappears. The information is then stored in the DDR for analysis when the car returns to the dealership.

In the case of problems that resist easy solutions, the DDR can interface with a computer at Buick Headquarters in Flint, Michigan, in effect seeking expert help at the factory level. In this way, a Buick owner can have the car "examined" at a distance of hundreds of miles by a computer that will suggest solutions. This electronic wizardry is augmented by a personal touch in the form of a telephone number available to every Buick technician.

The Best Evidence

We hope this information gives you a thorough grasp of the Buick experience. We think the experience is unique. It is as special as the cars we build, and we are determined to keep it that way. EPIC, computer diagnostics, courteous salespeople, well-equipped dealerships and trained technicians are just some of the evidence of our commitment.

The best evidence of all this, of course, will be found behind the wheel of a new Buick. And, as we've already said, we hope to see you there.

Buying a New Car — Some Important Considerations

Before you buy your new car, we at Buick want you to do something. We would like you to pause in your enthusiasm and think for a few minutes about the purchase you are about to make.

Other than your home, your new car may be the largest expenditure you'll ever make. It's for that reason we want you to consider a number of factors that will affect your ultimate decision about a new car.

Think about price. How much can you really afford? No new car is worth financial sacrifice.

Should you lease or buy a car? The amount of time the car will be used for business can affect this decision. If you are not conversant in the differences between buying and leasing, seek independent advice.

Whether you lease or buy, the term of the lease or loan should be considered. Should you have a 24-month loan? A 30-month loan? A 60-month loan? How much will each cost you out-of-pocket?

Today, with more people driving a wider selection of vehicles than ever before, you can choose anything from a small pickup truck to a full-size wagon — or even a van — as personal transportation. Consider what you will do with your vehicle, where you will drive it, what demands you will make of it.

Once you've decided on the vehicle type, there's another choice to be made: size. How many passengers will you usually have? Will the car serve you alone or the entire family?

Once you've determined the type and size of vehicle, decide on the engine size. Here again, the use to which you put your car will determine the proper engine size.

Do you prefer an automatic or a manual transmission? What are the preferences of others who will be driving the car?

What body style meets your needs and wants? Do small children mitigate in favor of a two-door? Or will adults or older children be your principal passengers? In that event, a four-door may be the correct choice.

There are advantages to both front-wheel drive and rear-wheel drive. Be aware of them and choose accordingly. A lightly loaded car used in snowy conditions could benefit from front-wheel drive, while a heavily loaded vehicle required to tow a boat or trailer might be better served by rear-wheel drive.

The configuration and material used in the seating arrangement is a primary consideration. If you're not happy with the interior, you won't be happy with the car. How many seats do you need? Do you prefer bucket seats to bench seats? Do pets or children make the selection of vinyl upholstery advisable?

Give careful thought to the comfort and convenience options. Select those options that you want and need, but there's no need to buy equipment you don't want and don't need.

Once you have done all of the above, compare cars made by different manufacturers. Many Buick dealers have computers which will display competitive information — *complete*

competitive information on cars made by other manufacturers. Select the best two or three cars — in your opinion — and then go visit showrooms for a first-hand look at fit and finish and interior comfort.

Compare the scheduled maintenance on each of the cars you have selected as finalists and be particularly careful as you examine the warranties. Do the warranties have extended service provisions? What do they cover? What is the cost?

After you've narrowed the choice to one or two cars, you would do well to compare the dealers, too. Are they friendly? Courteous? Do the service departments appear clean and busy? Are your questions answered fully and honestly?

An astonishing number of buyers purchase a new car without ever driving it. Don't do this. No matter how conscientious you've been in your preparation for buying a car, there is simply no substitute for behind-the-wheel impressions.

Before you sign on the dotted line, shop around for the best financing deal — assuming you are not paying cash for the car. Talk to your bank, to your Buick dealer and to your credit union.

If all this sounds like a lot to do, it is. But you are about to make an important purchase decision — one that we at Buick want you to be pleased with.

Now that you have had a chance to learn about the 1987 lineup of Buicks, take another moment and think about which one you might like to own, and how you would like it equipped.

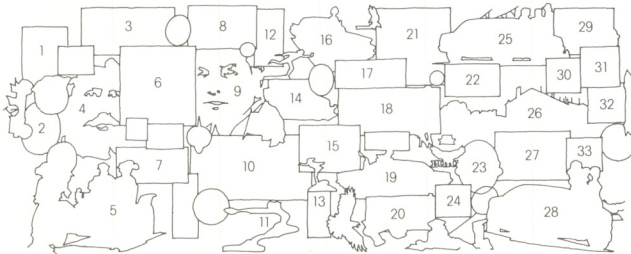
Consider available equipment such as 6-way power seats, leather upholstery, Vista-Vent sunroof or any of the other comfort, convenience and performance options that might be offered on your favorite Buick. Think about engines, tires, suspensions and other available performance upgrades, too. Put together a new Buick that is uniquely yours and list your choices on the form at the right.

Now below, fill in your name, address, phone number and the nature of any trade-in vehicle you might want to make part of a deal for your new Buick.

Done? Fine. Now take it to your Buick dealer and see just how easily you can own this dream car. We think you'll be surprised. And we're convinced you'll decide Buick is better where it really matters.

Before you sign on the dotted line, shop around for the best financing deal — assuming you are not paying cash for the car. Talk to your bank, to your Buick dealer and to your credit union.

If all this sounds like a lot to do, it is. But you are about to make an important purchase decision — one that we at Buick want you to be pleased with.



Buick Model		
Body Style		
Color		
Air Conditioning	Roof	
Axle Ratio	Seats	
Battery	Special Equipment	
Console	Steering Wheel	
Cruise Control	Striping	
Defogger	Suspension	
Engine	Tires	
Floor Covering	Transmission	
Glass	Wheel Covers	
Instrumentation	Windows	
Lights	Wipers	
Locks		
Mirrors		
Moldings		
Point Design		
Radio		
Name	Phone	
Street Address		
City	State	Zip
Present car(s) owned		
<input type="checkbox"/> I would like to test drive a new Buick.		

Shown on the left is the key to the artwork which appears on the inside front cover of this catalog. The drawing, a visual history of Buick, has been arranged chronologically, top to bottom and left to right, and covers 82 years of automotive accomplishment.

The numbers shown correspond to the captions that follow:

1. William C. Durant, founder of General Motors, as a child.
2. The old Buick factory at Flint, MI.
3. Early racing days: Buick of Indianapolis.
4. David Buick, originator of the marquee that bears his name.
5. The 1908 Buick Model 10.
6. Early Buick racing team. From left: Buick pioneer Walter Marr, chief engineer (and driver) Bob Burman, drivers Louis Chevrolet and Louis Strang.
7. Buick at Indianapolis, 1909.
8. The 1931 Buick Series 50.
9. William C. Durant.
10. The famous Buick "Bug," 1910.
11. The Buick goddess hood ornament, 1934-35.
12. An early Buick assembly line.
13. Buick hood ornament, 1931.
14. Harley Earl's famous "Y-Job."
15. The Buick for 1950.
16. A 1960 Buick.
17. 1975 Buick LeSabre Convertible.
18. The famous boat-tail Riviera, 1971-72-73.
19. First Riviera series, 1963.
20. Pancho Carter puts a Buick-powered car on the pole at Indianapolis, 1985.
21. 1986 Century Gran Sport.
22. Robotics, a modern Buick assembly method.
23. The 24-valve double-overhead cam Buick V-6 from the Buick Wildcat, 1986.
24. Buick Tri-shield hood emblem.
25. The Buick LeSabre T Type, 1987.
26. Buick City, the modern Buick assembly facility at Flint, MI.
27. Inside Buick City.
28. The Buick Wildcat, a look into the Buick future, 1986.
29. Buick's Electronic Product Information Center makes selection easy.
30. Computer-aided design (CAD) helps build better Buicks.
31. The 3.8-litre V-6 with sequential-port fuel injection.
32. Graphic Control Center in the 1986-87 Riviera.
33. The 3.8-litre V-6 with turbocharging and intercooling.

Safety Equipment

Occupant Protection

Manual lap/shoulder belts for driver and right front passenger, driver side includes visual and audible warning system (except LeSabre Coupes)

Automatic safety belt system for driver and right front passenger - LeSabre Coupes, (Skyhawk and Somerset, January, 1987; LeSabre Sedans, December, 1986)

Manual lap safety belts at each rear seat position (and center front, when applicable)

Energy-absorbing steering column
Energy-absorbing front seatback tops

Energy-absorbing instrument panel
Laminated safety windshield glass and tempered safety side- and rear-window glass (Also, Inner Shield windshield - Riviera)

Safety interlocking door latches

Passenger-guard inside door-lock handles

Inertia-locking, folding front seatbacks on two-door models

Safety armrests

Head restraints, driver and right front passenger (adjustable/integral)

Dual sun visors

Smooth contoured door and window regulator handles (window regulator does not apply to models with standard power windows)

Pressure-lock radiator cap

Accident Avoidance

Side marker lights and reflectors

Parking lamps that illuminate with headlamps

Four-way hazard warning flasher

Backup lights

Directional signal control with lane-change feature

Center high-mounted stop lamp

Windshield defroster, washer and dual-speed wipers

Inside rearview mirror with vinyl-bonded glass

Outside left rearview mirror

Starter safety switch

Dual-action hood-latch system (except LeSabre, Electra and Park Avenue)

Brake system with dual master cylinder and warning light

Low-glare finish on instrument panel top, inside windshield moldings, wiper arms, blades, metallic steering wheel surfaces

Illuminated heater and defroster controls

Illuminated windshield wiper and washer controls (if on instrument panel)

Safety road wheel rims

Tires with built-in tread-wear indicators

Audible brake lining wear indicators, all disc brakes

Self-adjusting brake feature

Pressure-relief fuel cap

Theft Deterrence

Audible reminder for ignition key removal

Theft-deterrent steering column lock

Visible vehicle identification number

Remote inside hood release

Theft-deterrent key system (separate ignition key)



Important: A word about this catalog

We have tried to make this catalog as comprehensive and factual as possible, and we hope you find it helpful. However, since the time of printing, some of the information you will find here may have been updated. Also, some of the equipment shown or described throughout this catalog is available at extra cost. Your dealer has details, and before ordering, you should ask him to bring you up to date.

The right is reserved to make changes at any time, without notice, in prices, colors, materials, equipment, specifications and models. Check with your Buick dealer for complete information.

A word about assembly, components and optional equipment in these Buick products

The Buicks described in this catalog are assembled at facilities operated by General Motors or GM of Canada.

These vehicles incorporate thousands of different components produced by car and truck groups and various component divisions of GM and by various suppliers worldwide to General Motors. From time to time during the manufacturing process, it may be necessary, in order to meet public demand for particular vehicles or equipment, or to meet federally mandated emissions, safety and fuel-economy requirements, or for other reasons, to produce Buick products with differently sourced components than initially scheduled. All such components have been approved for use in Buick products and will provide the quality performance associated with the Buick name.

With respect to extra cost optional equipment, make certain you specify the type of equipment you desire on your vehicle when ordering it from your dealer. Some options may be unavailable when your car is built. Your dealer receives advice regarding current availability of options. You may ask the dealer for

this information. GM also requests the dealer to advise you if an option you ordered is unavailable. We suggest that you verify that your car includes the optional equipment you ordered, or if there are changes, that they are acceptable to you.

A word about updated service information

Buick regularly sends its dealers useful service bulletins about Buick products. Buick monitors product performance in the field. We then prepare bulletins for servicing our products better. Now you can get these bulletins too. Ask your dealer. To get ordering information, call toll free 1 (800) 551-4123.

A word about the Buick Product Information Center

If you are interested in further details about the contents of this catalog or any Buick product, we have developed a personal, informative communication service called the Buick Product Information Center. For

information, call toll free 1-800-87-BUICK (1-800-872-8425). We can tell you everything you need to know to make an informed decision to buy.

A word about engines

Buicks are equipped with engines produced at facilities operated by GM car groups, subsidiaries or affiliated companies worldwide.

Buy or lease a Buick

Many Buick dealers offer you the opportunity to buy or lease a Buick. Ask about their leasing arrangement. It may be right for you.

The GM Protection Plan

It offers service protection in addition to that provided by GM's new-vehicle limited warranty. Coverage is currently available only in the U.S.A. and Canada for the 1987 model year. See your Buick dealer for details.

"Let's get it together... buckle up."

