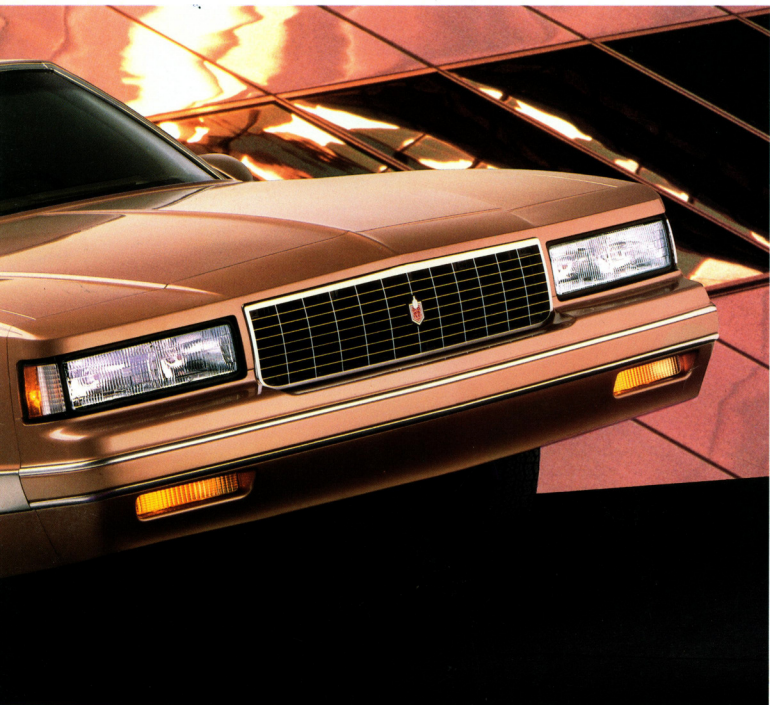


# M O N T E C A R L O

1988 CHEVROLET





# M O N T E C A R L O

1 9 8 8

Monte Carlo. Since 1970, it has been the classic American expression of the personal luxury coupe. For 1988, the tradition continues. Monte Carlo's unique style is available in two distinct automobiles: the elegant Luxury Sport (LS) or the legendary Super Sport (SS). Every Monte Carlo offers:

- Proven rear-drive engineering.
- A full-perimeter frame with 14 cushioned body mounts for a quiet ride.
- Full Coil suspension.
- A 4-speed automatic overdrive transmission.
- AM/FM stereo sound system with digital clock\*.
- Power steering and power brakes.
- Standard seating for six and a spacious 16.2-cu.-ft. trunk.
- Tinted glass, all windows.
- Dual sport mirrors.

## Monte Carlo SS

Born on the NASCAR track. Powered by the respected small-block V8. Monte Carlo SS, latest in a long line of Chevrolet Super Sports, delivers on its performance promise. Equipment includes:

- 5.0 Liter High Output V8 with 4-bbl. carburetor.
- F41 Sport Suspension with gas-charged shocks.
- P215/65R-15 Goodyear Eagle GT +4 tires on 15-inch cast aluminum wheels.

- Gage package with tachometer.
- Sport steering wheel.
- Aero-style soft front fascia.
- Sporty blackout exterior trim and color-coordinated accent striping.
- Rear-deck spoiler.

## Monte Carlo LS

The formal shape of Monte Carlo, with contemporary flair. That's LS. Standard features include:

- Beautifully sculpted front appearance with fine-mesh grille, composite-style halogen headlamps and a deftly integrated body-color bumper.
- Wide lower body moldings for a luxurious, well-trimmed appearance.
- A responsive 4.3 Liter V6 with Electronic Fuel Injection. For even more power, select the optional 5.0 Liter V8.
- Specific LS suspension settings and spring rates for a superbly comfortable ride.

## Standard Monte Carlo Interior

The luxury you expect in a personal coupe is standard in every 1988 Monte Carlo:

- Seating for six.
- Rich cloth upholstery in Blue, Saddle, Maroon or Gray.
- Convenient bench front seat with pull-down center armrest.
- For added flair in either the LS or SS model, select optional front bucket seats with sporty center console.

## Optional CL Custom Interior

For the ultimate in Monte Carlo elegance, the Luxury Sport Coupe may be ordered with the optional CL Custom Interior. It includes:

- Inviting pillow-type velour seating for six.
- A 45/55 front seat with pull-down center armrest.
- Custom-trimmed door panels and headliner.
- Additional sound insulation.
- Available colors: Blue, Saddle, Maroon, Gray.

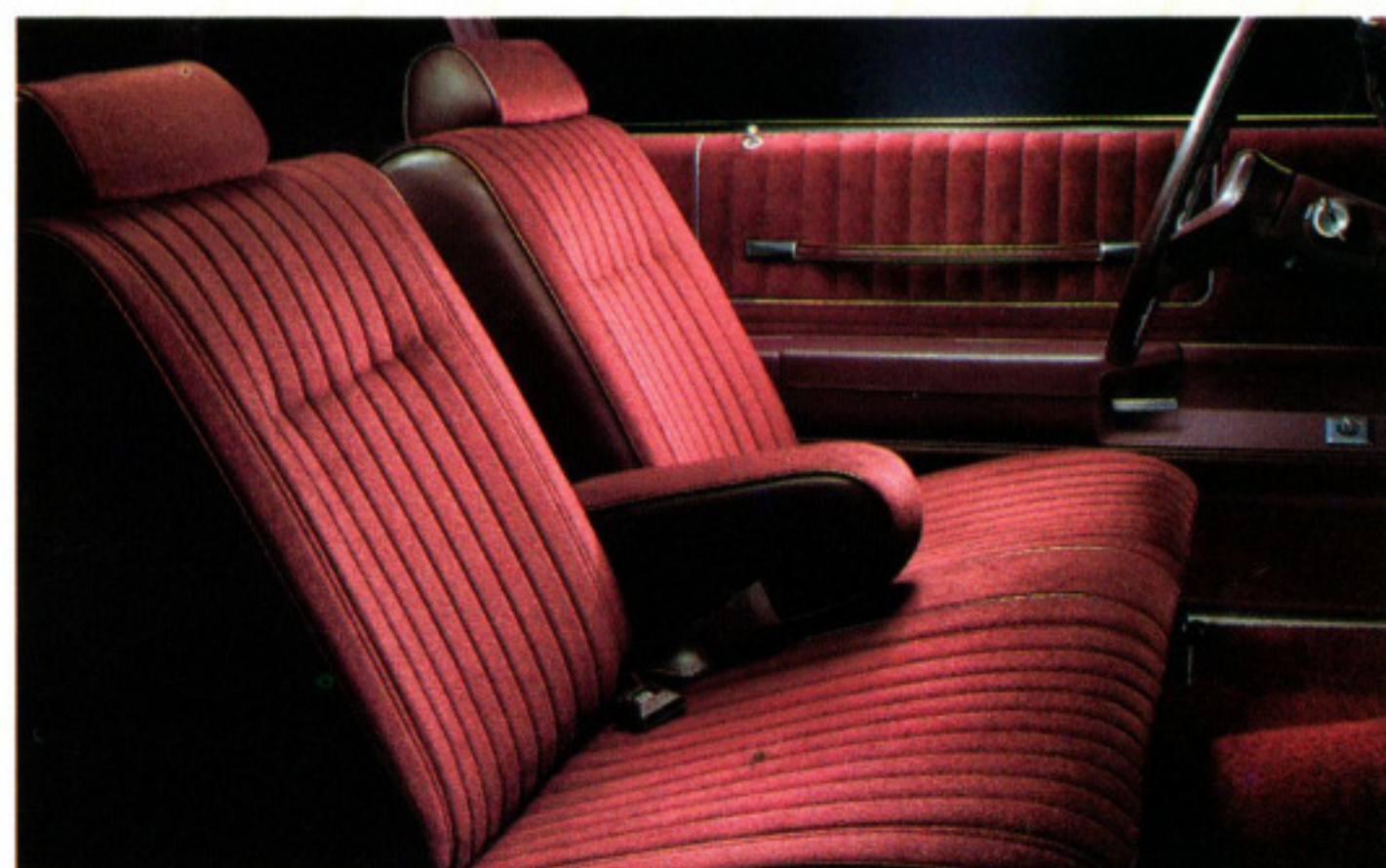
\*May be deleted for credit.

Shown on cover: Monte Carlo LS Landau Coupe.



Monte Carlo SS.

Monte Carlo LS.



Standard Monte Carlo interior.



Optional CL Custom interior.



## SAFETY FEATURES Occupant Protection

- Manual lap/shoulder safety belts for driver and right front passenger (driver side includes visual and audible warning system)
- Manual lap safety belts at each rear-seat position (and center front, when applicable)
- Energy-absorbing steering column
- Energy-absorbing instrument panel
- Energy absorbing seat-back tops, front
- Laminated safety windshield glass
- Safety interlocking door latches
- Side-guard door beams
- Passenger-guard inside door lock handles
- Inertia-locking, folding front seat-backs
- Safety armrests
- Head restraints, driver and right front passenger (adjustable).

## Accident Avoidance

- Side marker lights and reflectors
- Parking lamps that illuminate with headlamps
- Four-way hazard warning flasher
- Backup lights
- Center high-mounted stop lamp
- Directional signal control with lane-change feature
- Windshield defroster, washer and multi-speed wipers
- Inside rearview mirror
- Outside left and right rearview mirrors
- Brake System with dual master cylinder and warning light
- Starter safety switch
- Dual-action hood latch
- Low-glare finish on inside windshield moldings, wiper arms/blades, metallic steering wheel surfaces
- Illuminated heater and defroster controls
- Tires with built-in tread-wear indicators.

## Theft Deterrence

- Audible reminder for ignition key removal
- Theft-deterrent steering column lock
- Visible vehicle identification number.

## Important: A Word About This Catalog

We have tried to make this catalog as comprehensive and factual as possible. However, since the time of printing, some of the information may have been updated. Also, some of the equipment shown or described

throughout this catalog is available at extra cost. Your dealer has details and, before ordering, you should ask him to bring you up to date. The right is reserved to make changes at any time, without notice, in prices, colors, materials, equipment, specifications and models. Check with your Chevrolet dealer for complete information.

## A Word About Assembly, Components and Optional Equipment in These Chevrolets.

The Chevrolets described in this catalog are assembled at facilities operated by General Motors. These vehicles incorporate thousands of different components produced by car groups and various component divisions of General Motors and by various suppliers worldwide to General Motors. From time to time during the manufacturing process, it may be necessary, in order to meet public demand for particular vehicles or equipment, or to meet federally mandated emissions, safety and fuel economy requirements or for other reasons, to produce Chevrolet products with different components or differently sourced components than initially scheduled. All such components have been approved for use in Chevrolet products and will provide the quality performance associated with the Chevrolet name. With respect to extra-cost optional equipment, make certain you specify the type of equipment you desire on your vehicle when ordering it from your dealer. Some options may be unavailable when your car is built. Your dealer receives advice regarding current availability of options. You may ask your dealer for this information. GM also requests the dealer to advise you if an option you ordered is unavailable. We suggest that you verify that your car includes the optional equipment you ordered or, if there are changes, that they are acceptable to you.

## A Word About Engines.

Chevrolets are equipped with engines produced at facilities operated by GM and subsidiaries to GM worldwide.

## Chevrolet's Best Protection Plan Ever.

A 6-year/60,000-mile warranty demonstrates the confidence that Chevrolet has in Monte Carlo quality. This new limited warranty covers powertrains for 6 years/60,000 miles and includes 6-year/100,000-mile rust-through protection. See your Chevrolet dealer for the terms and conditions of this limited warranty. The 1988 Monte Carlo is carefully designed and built to resist corrosion, so the application of additional rustproofing is neither necessary nor required.

## GM Protection Plan

The GM Protection Plan offers service protection in addition to that provided by GM's new-vehicle limited warranty. Ask your dealer about it. Coverage available only in U.S. and Canada.

## A Word About Updated Service Information.

Chevrolet regularly sends its dealers useful service bulletins about Chevrolet products. Chevrolet monitors product performance in the field. We then prepare bulletins for servicing our products better. Now you can get these bulletins, too. Ask your dealer. To get ordering information, call toll-free 1-800-551-4123.

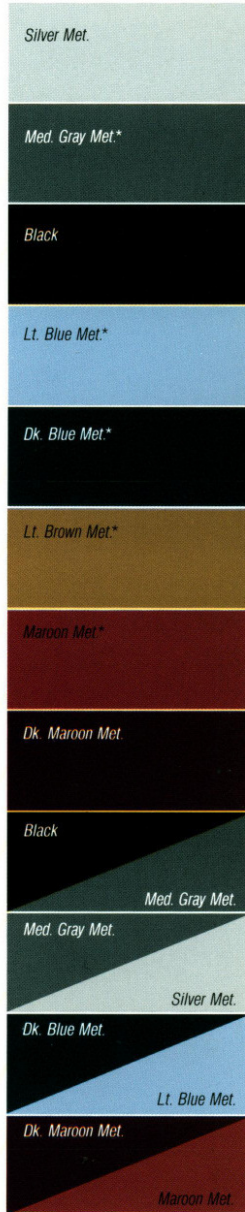
**More Dealers to Serve You.** With nearly 5,000 servicing dealers nationwide, Chevrolet offers a more extensive parts/service network than any other automaker.

At your Chevrolet dealer's, financing or leasing your new Monte Carlo can be as easy as saying GMAC.

Let's get it together... buckle up.



White



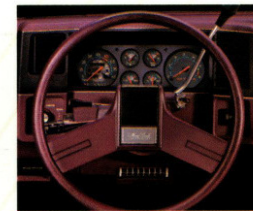
\*NA Monte Carlo SS.

## Options

Convenient option packages make it easy to tailor Monte Carlo to your specifications. Choose the package containing the equipment you desire, then select from the list of individual options. It's that simple.



AM/FM stereo with digital clock, Seek and Scan feature, graphic equalizer and cassette tape player.



Gage package (standard SS, optional LS) with optional tachometer (standard SS).

## Individual Options

(May be ordered with any package.)

- Air conditioning
- Rear axle: Limited slip differential
- Rear axle: Performance ratio\*
- Heavy-duty battery
- Rear-window defogger, electric
- Power door locks
- F41 Sport Suspension (Std. SS)
- Engine block heater
- RH visor mirror: Illuminated
- Custom Two-Tone paint\*
- Removable glass roof panels
- Power driver's seat (reqs. 45/55 seat)
- Pin striping: Body\*
- Tachometer (Std. SS)\*
- P195/75R-14 white-stripe tires\*
- P205/70R-14 white-stripe tires\*
- Wheels:
  - Wire wheel covers w/locks\*
  - Rally Wheels\*
  - Aluminum wheels\*

\*Monte Carlo LS only.

## MONTE CARLO LS OPTION PACKAGES

(Additional options may be ordered from individual option listing only.)

	1	2	3
<b>Standard Equipment Package 1</b>	■		
<b>Option Package 2</b>			
Air Conditioning		■	■
Auxiliary Lighting		■	■
Carpeted Mats, Front and Rear		■	■
Comfortilt Steering Wheel		■	■
Deluxe Body-Side Moldings		■	■
Electronic Speed Control with Resume Speed		■	■
Intermittent Wipers		■	■
<b>Option Package 3</b>			
Gage Package w/Trip Odometer			■
Mirrors, Sport Twin Remote			■
Moldings, Door Edge Guards			■
Moldings, Side Window Sill			■
Power Door Locks			■
Power Trunk Opener			■
Power Windows			■
Radio, AM/FM w/ERS**† System, Seek and Scan, Stereo Cassette Tape Player and Digital Clock			■

\*Radio may be deleted for credit. †Extended Range Sound.

## MONTE CARLO SS OPTION PACKAGES

	1	2
<b>Standard Equipment Package 1</b>	■	
<b>SS Package</b>	■	
<b>Option Package 2</b>		
Air Conditioning		■
AM/FM Stereo Radio w/ERS**† System, Seek and Scan, Cassette Tape Player and Digital Clock		■
Carpeted Mats, Front and Rear		■
Comfortilt Steering Wheel		■
Electronic Speed Control with Resume Speed		■
Halogen Headlamps: High and Low Beam		■
Intermittent Wipers		■
Lighting, Auxiliary		■
Power Door Locks		■
Power Trunk Opener		■
Power Windows		■
Sport Mirrors, Twin Remote		■

\*Radio may be deleted for credit. †Extended Range Sound.

## Radio Equipment

- Electronically tuned AM/FM stereo radio w/ERS system, Seek and Scan, stereo cassette player and digital clock
- Electronically tuned AM stereo\*/FM stereo radio w/Seek and Scan, graphic equalizer and stereo cassette tape with Search and Repeat
- Power antenna (NA SS)
- Radio delete.

\*Receives C-Quam\* AM stereo broadcasts. Most AM stations across the country broadcast in C-Quam but some do not. Check with your local stations for compatibility in your area.



THE  
*Heartbeat*

OF  
AMERICA.

TODAY'S CHEVROLET

