

CADILLAC  
FLEETWOOD







FLEETWOOD BROUGHAM.....



FLEETWOOD BROUGHAM



A LUXURIOUS PRESENCE

Fleetwood Brougham's commanding look and luxurious interior define it as one of America's greatest luxury sedans. For 1996, Fleetwood features a redesigned center armrest with cupholders and CD/cassette storage. It can also house the new optional portable cellular phone. Supple Sierra Grain leather seating areas are available in Fleetwood or Fleetwood Brougham. A new family of user-friendly radios is represented by an AM stereo/FM stereo cassette six-speaker unit with Auto Tone Control. All this and more complement the celebrated size, power, comfort and luxury of Cadillac Fleetwood Brougham.



FLEETWOOD



A TRADITION OF REFINEMENT

Daytime running lamps now accent the prestigious scope of Fleetwood. Under the hood, a powerful 5.7 liter V8 responds to most any need. Simplified electronics provide more driver information; new radios are acoustically enhanced and more user-friendly than ever. In addition, a new integrated, analog/digital, voice-activated cellular phone is available.



# F L E E T W O O D E N G I N E E R I N G



The heart of Fleetwood's highly engineered systems is its famous 5.7 liter V8 engine. Decades of technological development have made this powerplant the ultimate 260-hp expression of its type. Whether your passion is touring or trailering, this powerful V8 allows an optional towing capacity of up to 7000 lbs. Fleetwood's rugged, electronically controlled four-speed Hydramatic transmission is filled with DEXRON-III fluid that needs no scheduled replacement for the life of the vehicle.\* And for 1996, Fleetwood's cooling system benefits from DEX-COOL, a coolant that features new corrosion-inhibitors and needs no scheduled replacement for five years or 100,000 miles.\*\* Bosch anti-lock brakes and a full-range traction control system help make Fleetwood eminently road-worthy over its 575-mile touring range.†

\* This period varies with driving conditions.

\*\* This is a recommended service interval. Actual performance may vary. See Owner's Manual for limitations.

† Estimated highway range: multiply EPA highway estimate by fuel tank capacity.

CADILLAC OWNER



Cadillac Owner Privileges travel with you virtually anywhere throughout the U.S. and Canada.

- CADILLAC ROADSIDE SERVICE is available 24 hours a day, 365 days a year, by phoning Cadillac Customer Assistance at 1-800-882-1112. This includes no-charge Cadillac road service for the first 48 months or 50,000 miles of ownership.
- EMERGENCY ROAD SERVICE is also available 24 hours a day, 365 days a year, almost anywhere in the U.S. or Canada and can provide help for flat tires, lost keys or even empty fuel tanks.
- TRIP INTERRUPTION PROTECTION will reimburse you for hotel, food and even alternate transportation expenses incurred as a result of a warranted repair.
- TRIP ROUTING SERVICE is available with a phone call. A complimentary Rand McNally U.S. Road Atlas is also part of the service.
- WARRANTY PROTECTION safeguards your Cadillac, including its tires, for 48 months or 50,000 miles with no deductible. Body rust-through is covered for six years or 100,000 miles.
- ALTERNATE TRANSPORTATION OPTIONS are offered by your dealer should your Cadillac require repairs covered under your new vehicle warranty. See your dealer for details regarding "Gold Key Courtesy Transportation."
- GOLD KEY DELIVERY is designed to familiarize you with your new Cadillac, introduce you to key dealership personnel and equip you with a complete package of ownership materials.



# F E A T U R E S & O P T I O N S



Standard: AM stereo/FM stereo with cassette and six speakers. Trunk-mounted 12-disc CD changer optional



Optional: AM stereo/FM stereo with cassette, single-slot CD player and six speakers

## INTERIOR

Air bags, driver and front passenger  
 Auto-dimming inside rearview mirror  
 Automatic door locking system  
 Carpeted floor mats  
 Column shift  
 Controlled-cycle wipers  
 Cruise control  
 Digital instrumentation/trip odometer  
 Electronic climate control  
 Flash-to-pass headlamps  
 Front visor vanity mirrors  
 Illuminated entry system  
 Message Telltale Center  
 PASS-Key II security system  
 Power door locks with anti-lockout  
 Power front seat adjusters/recliners  
 Power windows, driver express down  
 Pre-wired for cellular phone  
 Reading lamps, front/rear

Rear window defogger  
 Remote keyless entry/key fob  
 Retained accessory power  
 Solar-Ray tinted glass  
 Tilt-adjusting wheel, leather-trimmed  
 Traction control on/off switch  
 Twilight Sentinel

## EXTERIOR

Brake/transmission interlock  
 Compact spare tire with cover  
 Electronic level control  
 Front/rear crush zones  
 Lamp monitor, front/rear  
 Power antenna  
 Power deck lid pulldown  
 Power, heated sideview mirrors  
 Stainless steel exhaust system  
 Steel safety cage  
 Tungsten-halogen headlamps  
 Underhood lamp

## BROUGHAM, STANDARD

Articulating headrests  
 Center rear armrest/cupholder  
 Eight-way memory driver's seat  
 Heated front seats  
 Padded roof  
 Rear vanity mirrors  
 Stylized aluminum wheels

## FLEETWOOD/BROUGHAM, OPTIONAL

Audible theft-deterrent system  
 Automatic fuel door lock/unlock  
 Cellular phone, portable  
 Chrome finish wheels  
 Full-size spare tire with cover  
 Leather seating areas  
 Solar reflective windshield  
 Sunroof  
 Three-channel garage door opener  
 Trailering package (7000 lbs)

## I N T E R I O R L E A T H E R C O L O R S



14 Light Gray



19 Black



30 Medium Blue

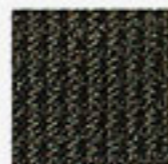


52 Neutral



75 Dark Cherry

## I N T E R I O R C L O T H C O L O R S



14 Medium Gray



30 Medium Blue



75 Dark Cherry

# P O W E R T R A I N & P E R F O R M A N C E



Fleetwood Std.: 15"x7" cast  
with Michelin P235/70R15



Brougham Std.: 15"x7" cast  
with Michelin P235/70R15



Optional: Chrome 15"x7"  
with Michelin P235/70R15

## ENGINE

5.7L V8, 260-hp, 330 lbs-ft torque  
Cast iron block and heads  
Central cam, overhead valves  
Compression ratio: 10:1  
Sequential-port fuel injection  
Crank-triggered ignition  
Fuel: Regular

## DRIVELINE

Front engine, rear-wheel drive  
Four-speed automatic transmission  
Torque converter clutch

Final drive ratio: 2.56:1

Brougham: 2.93:1

Optional, Fleetwood: 2.93:1

Optional, Trailering: 3.42:1

## SUSPENSION

Fully independent, coil spring  
Automatic rear level control  
Steering: Power, speed-sensitive  
Turning circle: 44.5 ft  
Brakes: Power, front  
disc/rear drum, ABS  
Traction Control: Bosch ASR5

## CAPACITIES

Oil: 4 quarts  
Coolant: 15.5 quarts  
Fuel: 23 gallons  
Trunk: 21.1 cu ft  
Battery: 12-volt  
Towing: 7000 lbs (optional)

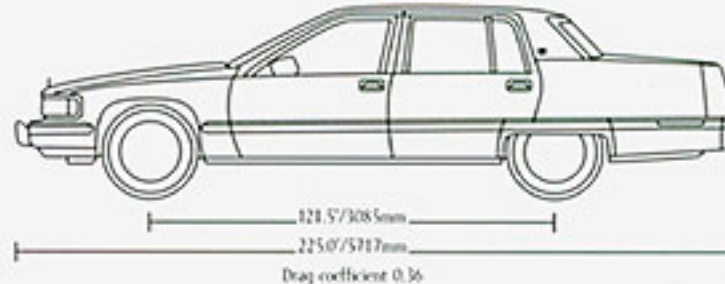
## PERFORMANCE

0-60: 8.5 seconds  
Top speed: 108 mph  
Range: 575 miles  
EPA mileage: 17 city/25 highway

## INTERIOR DIMENSIONS, in./mm

Head room .....front 38.7"/984mm rear 39.1"/994mm  
Leg room .....front 42.5"/1079mm rear 43.9"/1116mm  
Hip room .....front 59.2"/1504mm rear 59.8"/1518mm

Shoulder room .....front 64.3"/1632mm rear 64.0"/1626mm  
Seating capacity .....3/3  
Curb weight .....4447 lbs/2019kg  
Brougham .....4461 lbs/2023kg



## E X T E R I O R C O L O R S



03 Fawn Gray



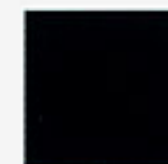
18 Slate Green



30 Med. Adriatic Blue



33 Frost Beige



39 Dark Adriatic Blue



40 Cotillion White



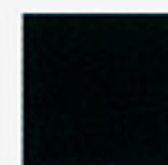
41 Sable Black



72 Carmine Red



77 Dark Cherry



92 Calypso Green





**CADILLAC**  
CREATING A HIGHER STANDARD

IMPORTANT WORDS ABOUT THIS CATALOG  
.....

We have tried to make this catalog as comprehensive and factual as possible. We reserve the right, however, to make changes at any time, without notice, in prices, colors, materials, equipment, specifications, models and availability. Since some information may have been updated since the time of printing, please check with your Cadillac dealer for complete details.

ENGINES  
.....

Cadillacs are equipped with engines produced by different operating units of GM, its subsidiaries or suppliers to GM worldwide.

ASSEMBLY  
.....

Cadillacs are assembled by different operating units of General Motors, its subsidiaries or suppliers to GM worldwide. Cadillacs incorporate thousands of components produced by different operating units of GM, its subsidiaries or suppliers to GM worldwide. We sometimes find it necessary to produce Cadillacs with different or differently sourced components than originally scheduled. All such components have been approved for use in Cadillacs and will provide the quality performance associated with the Cadillac name. Since some options may be unavailable when your vehicle is assembled, we suggest that you verify that your vehicle includes the equipment you ordered, or if there are changes, that they are acceptable to you.

UPDATED SERVICE INFORMATION  
.....

Cadillac regularly sends its dealers useful service bulletins about Cadillac products. Cadillac monitors product performance in the field. We then prepare bulletins for servicing our products better. Now you can get these bulletins too. Ask your dealer. To receive ordering information, call toll-free 1-800-551-4123.

CORROSION PROTECTION  
.....

Cadillacs are designed and built to resist corrosion. All body sheet metal components are warranted against rust-through corrosion for 6 years/100,000 miles. There is no deductible for rust-through repairs. Application of additional rust-inhibiting materials is not required under the corrosion coverage and none is recommended.

WARRANTY  
.....

The GM 4-year/50,000-mile Gold Key Bumper to Bumper limited warranty covers repairs for any new Cadillac, including labor and parts, to correct any defects in material or workmanship occurring during the warranty period. The complete vehicle, including tires, will be covered for 4 years or 50,000 miles, whichever comes first, except for adjustments and normal maintenance items. Plus free towing and a portfolio of other services. There is no deductible on any Cadillac warranty. See your Cadillac dealer for terms of these limited warranties.

THEFT DETERRENCE  
.....

Visible vehicle identification number • Laser-etched VIN plate • Theft-deterrent steering column lock • Theft-deterrent key locking system • Ignition key removal audible reminder

OCCUPANT PROTECTION  
.....

Supplemental Inflatable Restraint: Manual lap/shoulder safety belts and air bags, driver/right front passenger • Manual lap/shoulder safety belts, outboard rear-seat positions • Manual lap safety belts, center seat positions • Dual sun visors • Energy-absorbing steering column • Energy-absorbing instrument panel • Interlocking door latches • Safety armrests • Break-away inside rearview mirror • Security door locks and door retention components • Laminated windshield glass, urethane-bonded • Head restraints, front, adjustable or integral • Side door beams • Passenger-guard inside door lock handles • Safety belt use reminder system • Front and rear crush zones • Tempered safety glass, side and rear windows • Pressure lock radiator cap

CRASH AVOIDANCE  
.....

Audible disc brake lining wear indicators • Backup lamps • Brake system with dual master cylinder plus warning light • Brake/transmission interlock • Center high mounted stop lamp • Directional signal control • Dual action hood latch (front-opening) • Four-way hazard warning flashers • Illuminated heat and defogger controls • Low-glare finish (inside windshield moldings, wiper arms and blades, metallic steering wheel surfaces) • Parking lamps • Safety road wheel rims • Side marker lamps and reflectors • Starter safety switch • Tires with built-in tread wear indicators • Windshield defoggers, washer and multi-speed wipers



Official Sponsor of the 1996 U.S. Olympic Team.  
Official Sponsor of the 1996 Olympic Games.

CADILLAC, the CADILLAC emblem, CADILLAC ROADSIDE SERVICE, FLEETWOOD, CREATING A HIGHER STANDARD, DEXRON, SOLAR-RAY and TWILIGHT SENTINEL are registered trademarks of the General Motors Corporation. BROUGHAM is a trademark of the General Motors Corporation. CADILLAC OWNER PRIVILEGES is a service mark of the General Motors Corporation. PASS-KEY is a registered trademark of the Delco Electronics Corporation. DEX-COOL is a trademark of Texaco Lubricants Company. Litho in U.S.A. 8/95 © 1995 GM Corp. All Rights Reserved. Always wear safety belts, even with air bags.



Printed on recycled paper with soy-based inks.