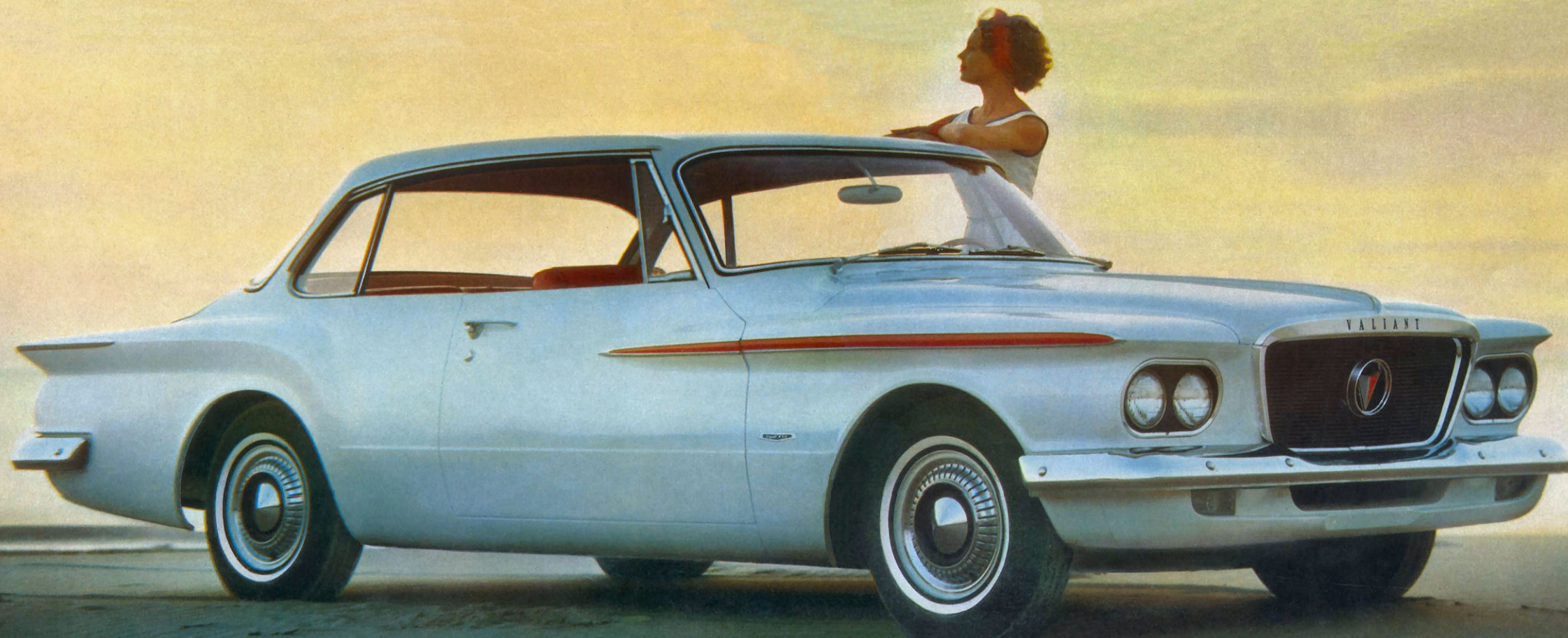




In 1962, nobody beats Valiant for value! It is, as it has been since its 1959 introduction, King of the Compacts! Take, for example, the excitingly new Valiant Signet 200. It's the lowest-price hardtop with bucket seats built in America! Just look at this sports-loving compact. Offers you your choice of standard 101-hp. Economy Six engine or optional Super 225 engine. Both say: **Come on, let's go!**—with a response surprising in a low-price compact. So step inside. See what makes Valiant with **Trim-Line Design** the style leader of the 1962 compacts. All-vinyl, king-size bucket seats, fashionably tailored interior trim, deep-pile carpeting and cockpit-type dash panel combine to convince you—this low-price compact can't be matched for luxury.

Inside and out, luxury highlights this new Signet 200 shown here in Valiant white.



You'll find from the luxurious Signet 200 to the low-price V-100 nobody beats Valiant for value in 1962! Just compare Valiant with any other low-price compact car. You'll find Valiant gives you a run for your money no other can match! Fact is, you have to pay extra for an engine in most other low-price compacts that will keep up with Valiant's standard 170-cu.-in. power-plant! And for all its pep, Valiant still puts plenty of miles between gas pumps. A Valiant, for example, averaged 26.13 mpg. in the 1961 Mobilgas Economy Run!

Top performer, this 4-door Valiant V-200 sedan shown here in bright Valiant red.



Smooth riding, this 2-door Valiant V-200 sedan shown here in Valiant blue metallic.

And Valiant for 1962 is every bit as easy to drive as it is eager to run. Improved Torsion-Aire suspension, heavy-duty rubber engine mounts and new high-speed tires add substantially to Valiant's quiet, "big car" ride. Yet Valiant retains all of its compact cornering control and fingertip handling ease. This combination of smooth comfort and sure control leads many full-size car owners who drive Valiant for the first time to remark: This car's really fun to drive!

Valiant's **new interiors** are a refreshing step-ahead of other low-price compacts, too. Rich fabrics and harmonious vinyls are color-keyed by fashion experts to complement your choice of gleaming exterior colors. And laboratory strength tests have **proven** these materials are as long-lastingly **durable** as they are fashionably smart-looking. Something you might expect of the higher-price models of standard-

size cars but hardly in a low-price compact! And **roomy!** You bet your family's comfort Valiant is! Compare Valiant's station-wagon carrying capacity with any compact wagon. It can actually hold as many apples, oranges—or **people**—as some full-size station wagons of a few years ago could. Compare trunk space in a Valiant! A full 24.9 cu. ft! From bumper to bumper, **nobody beats Valiant for value!**

Comfortable family cars, this 4-door Valiant V-200 station wagon shown in Valiant white and 4-door Valiant V-100 sedan shown in Valiant green metallic.



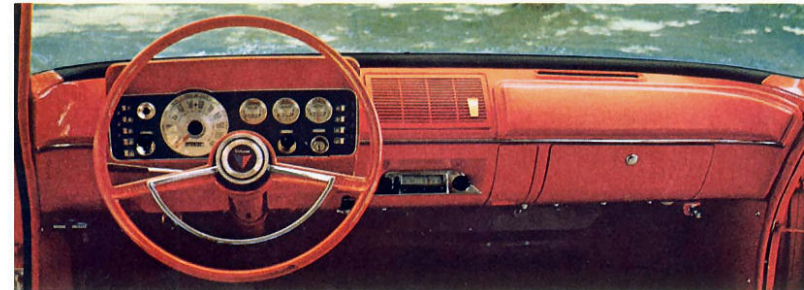
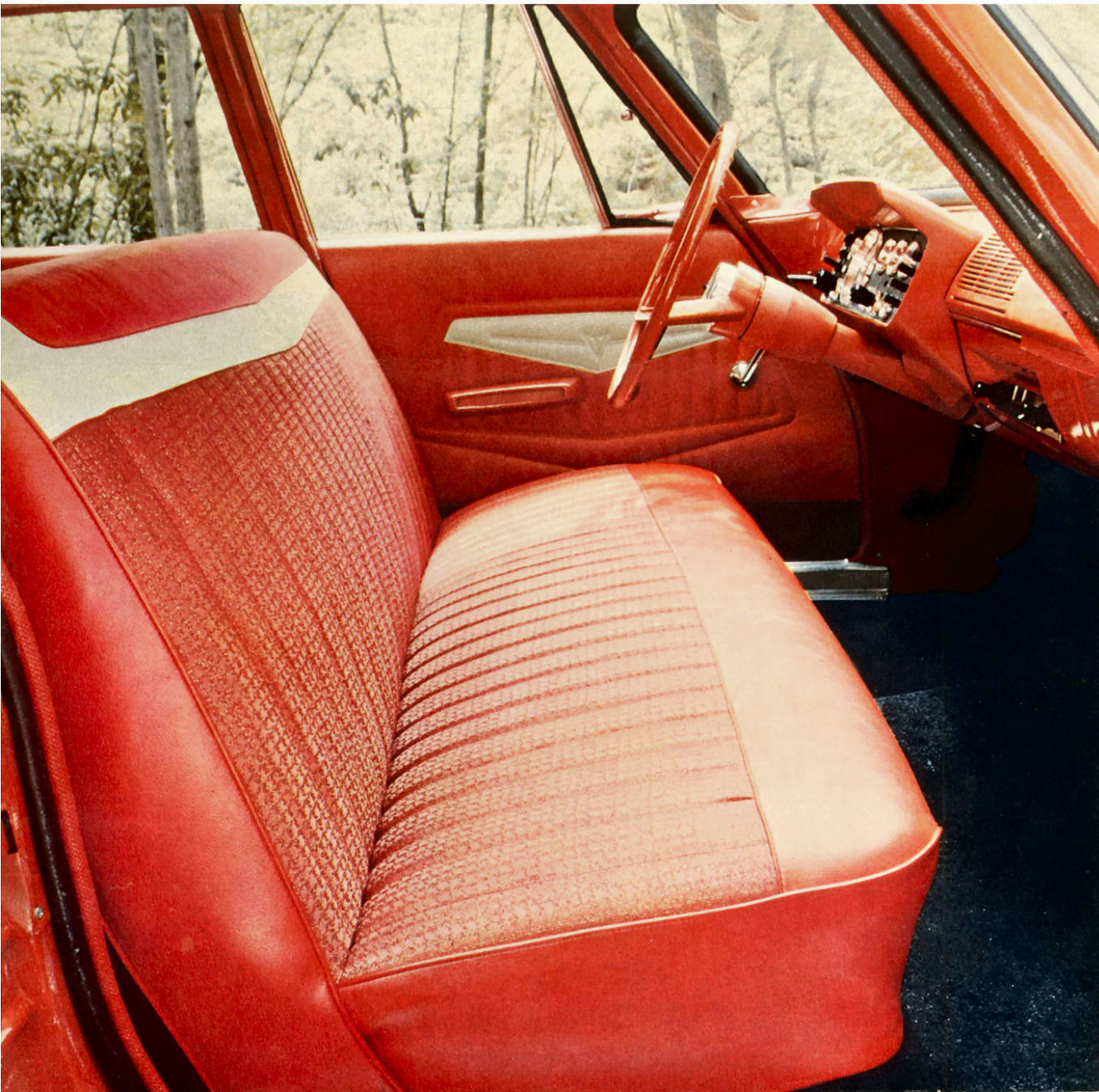


Economy can be delightful in this 2-door Valiant V-100 sedan shown in Valiant light blue or 4-door Valiant V-100 station wagon shown in Valiant black.

Starting to sound expensive? Not so! Valiant's **low asking price** is as much as several hundred dollars below many other compacts. And Valiant savings just start with **low initial cost**. Figure lower insurance rates, 4,000-mile oil changes, 32,000-mile lube cycle on the major chassis points—plus Valiant's **high trade-in value**—and you see why so many full-size car owners are switching to Valiant

every day. Compare Valiant's **sturdier, one-piece Unibody**. It's dipped and sprayed 13 times to help prevent rusting and corrosion. Other low-price compacts are satisfied with either dips or sprays. None offer Valiant's double protection at Valiant's price. Style, performance, economy, comfort and rugged reliability—Now you add 'em up, you'll see why we say: **Nobody beats Valiant for value in '62.**

1962 Valiant interiors of rich fabric and rugged vinyl bring a new look of luxury to low-price compacts. All-vinyl trim optional on V-200 4-door sedan.



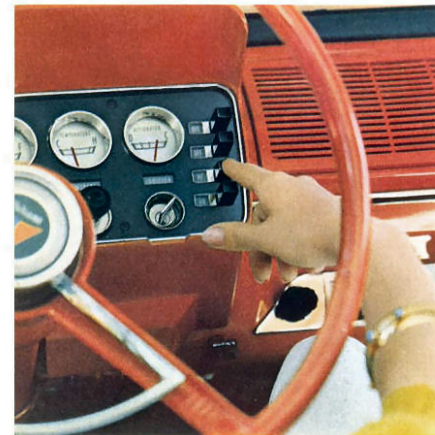
Valiant's new cockpit instrument cluster highlights Valiant's interior combination of high fashion and practical convenience. Safe, convenient push-buttons at left control the 1962 Valiant's optional automatic 3-speed TorqueFlite transmission.



Valiant's rugged one-piece Unibody is dipped and sprayed 13 times to help prevent costly corrosion.



Valiant's handy roll-down rear window on station wagon models eliminates old-fashioned lift gate.



Valiant's optional heater-defroster, radio and TorqueFlite automatic transmission all feature push-button convenience for 1962.

1962 VALIANT SPECIFICATIONS

INTERIOR DIMENSIONS

	Sedans	Station Wagons
Headroom, Front*	37.9 in.	37.9 in.
Headroom, Rear*	37.4 in.	37.5 in.
Legroom, Front	42.8 in.	42.8 in.
Legroom, Rear	39.7 in.	38.1 in.
Hiproom, Front	56.8 in.	56.8 in.
Hiproom, Rear	55.9 in.	55.9 in.
Seat Height, Front	11.2 in.	11.2 in.
Seat Height, Rear	13.7 in.	13.7 in.
Kneeroom, Rear	27.9 in.	26.9 in.
Trunk Volume—Sedans	24.9 cu. ft.	

*Includes cushion deflection due to passenger weight according to A.M.A. standards of measurement.

EXTERIOR DIMENSIONS

	Sedans	Station Wagons
Wheelbase	106.5 in.	106.5 in.
Tread, Front	55.9 in.	55.9 in.
Tread, Rear	55.6 in.	55.6 in.
Length, Overall	184.2 in.	184.2 in.
Width, Overall	70.4 in.	70.4 in.
Height, Overall	53.4 in.	52.7 in.

BRAKES

Four-wheel hydraulic, internal expanding, duo-servo with self-energizing shoes. Molded asbestos lining, bonded shoes. Size: 9 x 2½ inches in front, 9 x 2 inches in rear. Lining area: 153.5 square inches.

SUSPENSION

Front.....torsion bars and ball joints
Rear.....2½-inch outboard-mounted asymmetrical leaf springs

Shock absorbers.....Orilflow type

6-CYLINDER ENGINE

Horsepower.....	101 at 4400 rpm
Torque, Lbs.-Ft.....	155 at 2400 rpm
Compression Ratio.....	8.2 to 1
Bore, Inches.....	3.40
Stroke, Inches.....	3.125
Displacement, Cubic Inches.....	170

ELECTRICAL SYSTEM

Heavy-duty, 12-volt, 38-ampere-hour battery. Chrysler Corporation alternator with high charging rate at low engine speeds.

REAR AXLE

Type.....Hotchkiss drive, hypoid rear axle
Ratio with manual transmission.....3.23 to 1
Ratio with automatic transmission.....3.23 to 1

TIRES AND WHEELS

Safety-Rim wheels with 2-ply, low-pressure tubeless tires. Wheels are 13 x 4½ inches with 6.50 x 13 tires standard on all models.

CAPACITIES

Fuel Tank.....	14 gallons
Cooling System.....	11 quarts
Engine Crankcase.....	4 quarts

STATION WAGON CARGO COMPARTMENT DIMENSIONS

Length—rear seat up, tailgate up.....	51.0 in.
Width max.....	52.6 in.
Between wheel housings.....	42.6 in.
Height max.—floor to ceiling.....	51.3 in.
Rear opening width—max.....	41.0 in.
Rear opening height.....	27.4 in.
Load space, rear seat flat.....	72.3 cu. ft.

Printed in U.S.A.
Code No. 81-505-2014

The policy of Chrysler Corporation is one of continual improvement in design and manufacture wherever possible to assure a still finer car. Hence, specifications, equipment, and prices are subject to change without notice. Product information published herein, while correct at time of publication, is subject to change. Automobiles pictured, in some cases, show optional equipment items as listed above.

1962 Valiant—Style Leader of the Compacts—Quality-Engineered by Chrysler Corporation.

1962 VALIANT ACCESSORIES

Customize your Valiant with these factory-installed accessories available at slight extra cost . . .

- Automatic 3-speed push-button transmission
- All-weather hot water heater-defroster
- Push-button transistor radio
- Full-time Power Steering
- Power brakes
- Undercoating
- Twin-jet windshield washer
- Variable-speed windshield wipers
- Deluxe wheelcovers
- Whitewall tires
- Super-foam front-seat cushion
- Deluxe, all-vinyl trim (V-200 4-door sedan)
- Outside left mirror
- Inside day-night mirror
- Back-up lights
- Tinted windows
- Custom carpeting (for V-200 only)
- Bumper guards, front and rear
- Safety seat belts
- Padded instrument panel
- Electric remote-control tailgate window (for wagons only)
- Roof luggage rack (for wagons only)

Ask for these dealer-installed accessories . . .

- Air conditioner
- Rear-seat speaker
- Rear-window defogger
- Padded sun visors (right and left)
- Tinted plexiglass sun visors (right and left)
- Rear-door safety locks
- Glove box light
- Emergency warning light
- Parking-brake warning light
- Trunk compartment light



V A L I A N T