

# DODGE WAGONS FOR 1964

COMPACT DART • STANDARD-SIZE DODGE • BIG 880



THE DEPENDABLES BUILT BY DODGE



## '64 COMPACT DART STATION WAGONS

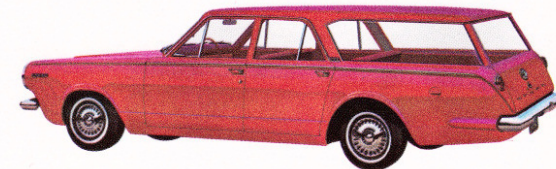
Looking for a compact station wagon? Look at Dodge Dart. At first glance, its outside dimensions will fool you—inside there's over 68 cubic feet of cargo room! And you have a choice of 101 horsepower (or the optional 145 hp) for the engine room. Both are Slant-6 design, famous for performance as well as economy. There's the handsomely appointed Dodge 270 4-door station wagon with its all-vinyl interior, and the Dodge 170 4-door wagon—lowest-priced wagon model in the entire Dodge stable.

Compact Dart station wagons offer you a wide choice of options, as well. There's an improved 3-speed standard shift—the famous 3-speed pushbutton Torqueflite automatic transmission—and a brand new "4-on-the-floor" fully-synchronized Dodge manual transmission, to name just a few.

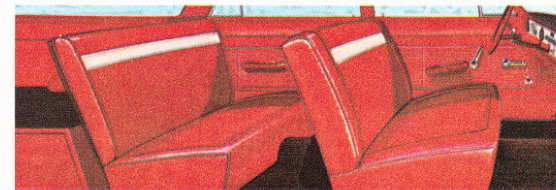
Dart is the compact station wagon that's fun to drive—easy to park—easy on regular gasoline. It's the compact wagon built for America's fun-loving young families!

**STANDARD EQUIPMENT Dart 170 Wagons:** Floor mats to match interior colors • foam front seat pad • vinyl headlining • interior dome light • sun visors (right & left) • armrests, front & rear • individual ash receivers in both rear seat armrests • cigar lighter • electric windshield wipers • turn signals • rust-protected unitized body • stainless steel exterior trim • sealed chassis lubrication (32,000 miles between major grease jobs) • high-output electric alternator • Safety-Rim wheels • self-adjusting brakes • airfoil wiper blades.

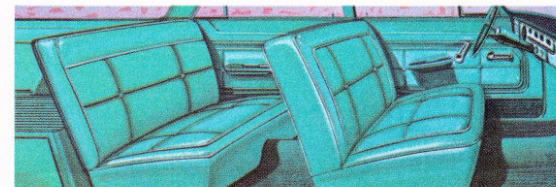
**Dart 270 Wagons:** (same as 170) plus: sill-to-sill interior carpeting, steering wheel horn ring, special 270 all-vinyl interior trim.



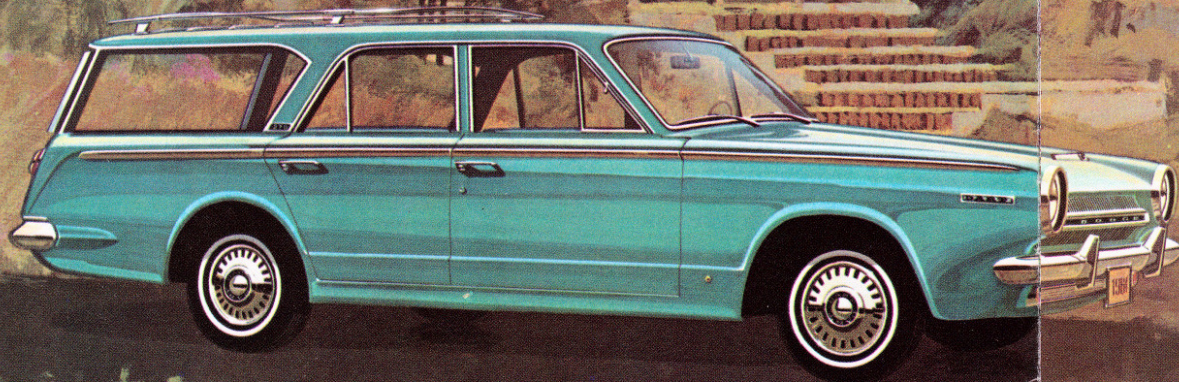
Compact Dart 170 Station Wagon



Dart 170 all-vinyl Wagon Interior



Dart 270 all-vinyl Wagon Interior



Compact Dart 270 Station Wagon



## STANDARD-SIZE DODGE STATION WAGONS!

Six beautiful bays in the low-price field! Standard-size Dodge station wagons for 1964 come in two series. The lower-priced Dodge 330 wagons are offered with either Slant-6 or V8 power; the more luxurious Dodge 440 wagons offer V8 power all the way. Both Dodge 330 and Dodge 440 station wagons are available in 2-seat and 3-seat models. There's a grand total of 84 cubic feet of cargo space in each of them.

Dodge 330 wagons sport a serviceable all-vinyl interior—and Dodge 440 wagons offer an even more distinctive all-vinyl interior trim that also includes full carpeting for front and second-seat passengers!

For camp, for carrying, for cruising around town—like your choice of six standard-size Dodge station wagons. You get an uncommon amount of room, power, good looks and luxury ... all at a price right in line with the traditional low-price field. Whatever you choose, you'll get a kick out of the way Dodge performance and luxury put a new lift into your station wagon living.

**STANDARD EQUIPMENT Dodge 330 Station Wagons:** Floor mats to match interior color • vinyl-covered sun visors, right & left • dual horns • dome light • oil pressure gauge • glove box lock • cigar lighter • turn signals • armrests, front & rear • individual ash receivers in both rear seat armrests • electric windshield wipers • self-adjusting brakes • sealed chassis lubrication (32,000 miles between major grease jobs) • rust-protected unitized body • stainless steel exterior trim • high output electric alternator • Safety-Rim wheels • aerial wiper blades.

**Dodge 440 Station Wagons (same as 330 wagon) plus:** foam front seat pad, full carpeting, body side two-tone color insert, special 440 wagon vinyl interior trim.



Dodge 330 Station Wagon (S6 & V8 models)



Dodge 330 Station Wagon Interior (all vinyl)



Dodge 440 Station Wagon Interior (all vinyl, carpeted)



## DODGE 880—THE BIGGEST DODGE WAGON!

For 1964, Dodge offers a most complete selection of station wagons. The big Dodge 880 wagons are among the largest, most luxurious offered by any car maker. Priced a thoughtful step above the low-price field, the 880 wagons provide an unmatched ride, room, luxury and comfort.

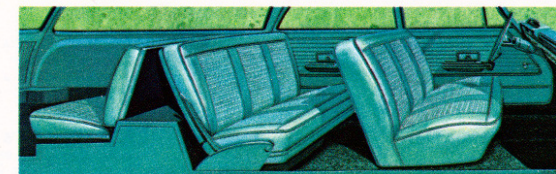
880 station wagons are offered in two series. The luxurious Custom 880 hardtop wagons, and the lower-priced Dodge 880 sedan wagons. Both are offered in 2-seat and 3-seat models. In size and mechanical equipment you will find both series practically identical. Their cargo capacity is mammoth! 91.9 cubic feet!

Custom 880 station wagon interiors are finished in a premium grade vinyl, impeccably hand-fitted. Dodge 880 wagon interiors feature all-vinyl door panels and combination vinyl-and-cloth seat trim. The choice of V8 engines and transmissions is identical for both 880 station wagon series. (For details please refer to station wagon specifications on back cover.)

**STANDARD EQUIPMENT** Dodge 880 Sedan Wagons: glove box lock • locking luggage compartment (2-seat model) • electric tailgate window (3-seat model) • electric windshield wipers • sun visors, right & left • cigar lighter • two center dome lamps (one, in 2-seat model) • oil pressure gauge • turn signals • foam front seat pad • arm-rests, front & rear • rust-protected unitized body • stainless steel exterior trim • sealed chassis lubrication (32,000 miles between major grease jobs) • self-adjusting brakes • high-output electric alternator • Safety-Rim wheels • airfoil wiper blades. Custom 880 Hardtop Wagons: (same as Dodge 880) plus: bright metal front seat side shields, parking brake warning light, full horn ring, foam seat pads front & second seat, map & courtesy light, foam-padded visors, electric tailgate window on all models.



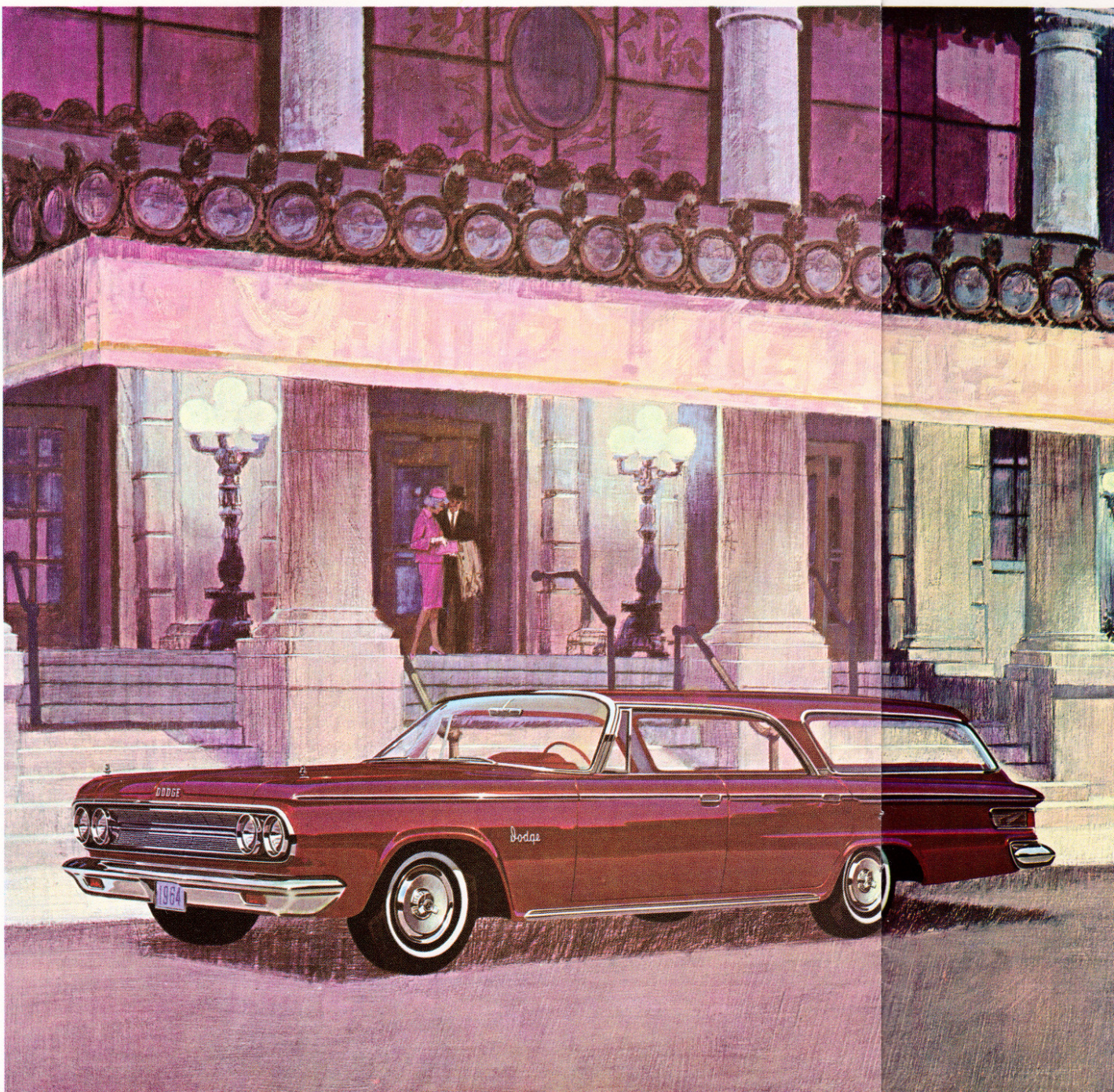
Dodge 880 Sedan Wagon



Dodge 880 Interior, combination vinyl-and-cloth seat trim



Custom 880 Interior, premium grade all-vinyl



Custom 880 Hardtop Wagon

# SPECIFICATIONS

## EXTERIOR DIMENSIONS:

	DART	DODGE	880
Wheelbase.....	396"	116"	121"
Overall length.....	198.2"	210.7"	215.3"
Overall width.....	68.9"	76.8"	80.0"
Overall height.....	52.9"	54.8"	55.8"
Front track.....	55.9"	56.5"	51.7"
Rear track.....	55.7"	56.8"	56.6"

## INTERIOR DIMENSIONS

	DART	DODGE	880
Front headroom.....	38.3"	38.4"	38.1"
Rear headroom.....	31.8"	32.5"	32.5"
3rd seat headroom.....	—	35.4"	34.3"
Front legroom.....	40.8"	35.4"	41.3"
Rear legroom.....	35.5"	36.4"	37.2"
3rd seat legroom.....	—	32.5"	32.3"
Front hiproom.....	56.9"	62.8"	62.8"
Rear hiproom.....	57.8"	61.6"	62.0"
3rd seat hiproom.....	—	45.2"	44.0"
Front seat height.....	8.6"	8.1"	9.0"
Rear seat height.....	11.6"	11.0"	13.2"
3rd seat height.....	—	13.2"	15.6"

## CARGO COMPARTMENT DIMENSIONS

	DART	DODGE	880
Height, rear opening.....	36.1"	37.2"	37.2"
Width, rear opening.....	44.3"	43.0"	48.6"
Back of 3rd seat to end of tailgate (open).....	74.9"	82.2"	86.0"
Back of 2nd seat to tailgate (folded).....	51.8"	56.6"	65.4"
Back of front seat to end of tailgate (open).....	305.3"	317.9"	321.3"
Back of front seat to tailgate (closed).....	83.8"	94.3"	106.7"
7 floor with, between wheelwells.....	43.5"	46.0"	45.8"
Cargo capacity (see text).....	68.8	84.3	91.9

**ENGINES: COMPACT DART WAGONS:** 130 Sleet Six Standard on all Dart 6-cylinder models. Overhead valves, 30° inclined engine block, 6 cylinders, inline. Displacement 130 cubic inches. Bore 3.43". Stroke 3.125". Compression ratio 8.5 to 1. Horsepower 101 at 4000 rpm. Torque 156 ft.-lbs. at 2400 rpm. Single barrel carburetor. Single exhaust. Uses regular grade gasoline. (225 Sleet Six, optional. Please refer to Dart full line catalog.)

**DODGE WAGONS:** 318 V8 Standard on all Dodge 440 wagons, and on 330 V8 wagons. Overhead valves, 90° V-type, 8 cylinders. Displacement 318 cubic inches. Bore 3.51". Stroke 3.31". Compression ratio 9.8 to 1. Horsepower 230 at 4400 rpm. Torque 340 ft.-lbs. at 2300 rpm. Single exhaust, 2-barrel carburetor. Uses regular grade gasoline. (360 V8 2-604, 383 V8 4-604, 426 V8 4-604, and 426 Ramcharger Competition V8 optional on all Dodge V8 wagons. Please refer to full line Dodge catalog.)

**225 Sleet Six standard on all Dodge 330 6-cylinder wagons.** (Not available on Dodge 440 wagons.) Overhead valves, 30° inclined engine block, 6 cylinders, inline. Displacement 225 cubic inches. Bore 3.46". Stroke 4.135". Compression ratio 8.4 to 1. Horsepower 145 at 4000 rpm. Torque 215 ft.-lbs. at 2800 rpm. Single barrel carburetor. Single exhaust. Uses regular grade gasoline.

**880 WAGONS:** 361 V8 standard. Overhead valve, 90° V-type, 8 cylinders. Displacement 361 cubic inches. Bore 4.02". Stroke 3.38". Compression ratio 9.8 to 1. Horsepower 205 at 4400 rpm. Torque 380 ft.-lbs. at 2600 rpm. Single exhaust, 2-barrel carburetor. Uses regular grade gasoline. (383 cubic-inch V8 optional. Please refer to 880 full line brochure.)

**TRANSMISSIONS:** Three-speed manual transmissions are offered as standard equipment on all Dart, Dodge and 880 station wagons. Compact Dart gear ratios: (170 Sleet-5) 3.32/1.00/1.00-1, reverse 3.88-1; (225 Sleet-6) 2.95/1.88/1.00-1, reverse 3.80-1. Dodge ratios: (225 Sleet-6) 2.95/1.88/1.00-1, reverse 3.88-1; (318 V8; 383 V8 with 3-speed shift) 3.02/1.46/1.00-1, reverse 3.34-1; 880 ratios: (361 V8; 383 V8 with 3-speed shift) 3.02/1.46/1.00-1, reverse 3.34-1.

**Torquellite Automatic transmissions** are available at extra cost on all Dart, Dodge and 880 wagons. These transmissions feature pushbutton control, lever-actuated parking strap, are water cooled. Gear ratios (all) 2.45/1.45/1.00 to 1. Reverse 2.56 to 1.

**4-Speed fully-synchronized manual transmissions** are also available, at extra cost, on Dodge and 880 wagons powered by optional 383 V8 engines, and all compact Dart wagons. Gear ratios (Compact Dart) 1.98/1.50/1.00/1.00 to 1. Reverse 3.00 to 1. (Dodge & 880) 2.86/1.31/1.00/1.00 to 1. Reverse 2.58 to 1.

**Axle ratios:** Because of varied applications for station wagons, a wide choice of rear axle ratios are offered on all Dodge station wagons. Let your Dodge Dealer recommend the correct axle ratio for your particular need.

**SUSPENSION:** All Dart, Dodge and 880 station wagons feature Torque-Aire front suspension. A combination of chrome steel torsion bars and ball-joints in front and extra duty asymmetrical leaf springs in the rear. Dart wagons have 5 leaves, Dodge wagons 5 leaves, and 880 wagons 7 leaves in each rear leaf spring assembly. All wagons have road-smoothing Driveflex shock absorbers mounted at each wheel.

**TIRES:** Dart wagons: 6.50 x 13 black wall, standard; white sidewall, optional; 7.80 x 13 black- or white sidewall, optional. Dodge wagons: 7.50 x 14 black wall, standard; white sidewall, optional. 8.00 x 14 black- or white sidewall optional. 880 wagons: 8.80 x 14 black wall, standard; white sidewall, optional. 8.50 x 14 black- or white sidewall tires optional. 8.50 x 14 tires on all air-conditioned 880 wagons.

**BRAKES:** Dart, Dodge and 880 wagons all feature hydraulic, self-adjusting brakes with bonded brake linings, for longer life. Effective brake lining area: 287.3 sq. in. (880 wagons); 195.2 sq. in., standard—234.1 sq. in. optional (Dodge wagon); 153.4 sq. in. (Compact Dart wagon).

**ELECTRICAL:** Dart, Dodge and 880 wagons all have 12-volt, 6-cell batteries and high-output alternators.

**CAPACITIES: Gasoline:** (Dart wagons—18 gallons) (Dodge wagons—21.5 gallons) (880 wagons—22 gallons) Castrolene (oil), all engines, 5 quarts (when changing oil filter). Coolant capacities: 130, 225 Sleet 6 engines—12 quarts (without heater), 318 V8—20 quarts (without heater), 361 V8, 383 V8, 426 V8—16 quarts (without heater).

## DODGE STATION WAGON OPTIONS

In addition to the power train options (optional engines, automatic transmission and 4-speed manual transmission) Dodge station wagon buyers are offered a wide choice of optional equipment. Let your dependable Dodge Dealer show you in greater detail what comfort, safety, and good looks these various options give you.

**ALL STATION WAGONS (DART, DODGE, 880):** Heater, Defroster, Ventilator • radio • automatic back-up lights • padded dash • electric tailgate window (standard on 3-seat models, and all Custom 880 wagons) • air conditioning • seat belts • roof luggage rack • deluxe wheel covers • tinted glass (windshield only, or all windows) • outside left rearview mirror (regular or remote controlled) • inside panoramic rearview mirror • front bumper guards • variable speed electric windshield wipers • pushbutton windshield wipers • undercoating (including fiberglass roof padding) • Sure-Grip differential • optional oversize tires.

**STANDARD SIZE DODGE STATION WAGONS ONLY:** Electric Clock • Parking brake warning light • Glove box light • 3rd rear dome light • Locking Storage Compartments (2-seat models) • combination seat handles and wind deflectors • power steering • power brakes.

**880 STATION WAGONS ONLY:** Dual Air-Conditioning • Parking brake warning light (std. on Custom 880) • 2nd rear dome light (std. on 3-seat wagons) • Locking Storage Compartments (std. on Custom 880 2-seat models) • power steering • power brakes • adjustable steering column (with power steering and automatic transmission only) • power-operated side windows • power-operated front seat • vacuum-operated door locks on all 4 doors • autopilot speed control (with power brakes and automatic transmission only) • map and courtesy lights (std. on Custom 880) • electric clock • glove box light • assist handles.

DODGE DIVISION



CHRYSLER  
MOTORS CORPORATION

The policy of Dodge Division of Chrysler Corporation is one of continual improvement in design and manufacture wherever possible to assure a still finer car. Model specifications, equipment, and prices are subject to change without notice.