

DODGE WAGONS '65



Dodge Dart 270



Dodge Coronet 440



Dodge Polara



Dodge Custom 880



THE COMPACT WAGON FOR FAMILIES ON THE GROW!

This wagon offers you more than economy alone. It whisks in and out of parking spaces. Carries a lot more cargo than its outside dimensions lead you to believe. One of the thriftiest station wagons you can buy anywhere!

DART

Even the lowest priced Dodge wagon sports an all-vinyl interior! Tough. Long-wearing. Good-looking. All-vinyl interiors include: door trim, seats *and* headlining! Dart station wagon interiors come in a wide selection of colors. Take your choice: blue, turquoise, tan, or red.

Dart station wagons have plenty of cargo space—for all those boxes, groceries, shrubs, kids, cats, canaries, hounds and (????) you'll tote around. Second seat easily folds down to provide 68 cubic feet of cargo room for you—or 68 cubic feet of play room for the kids!





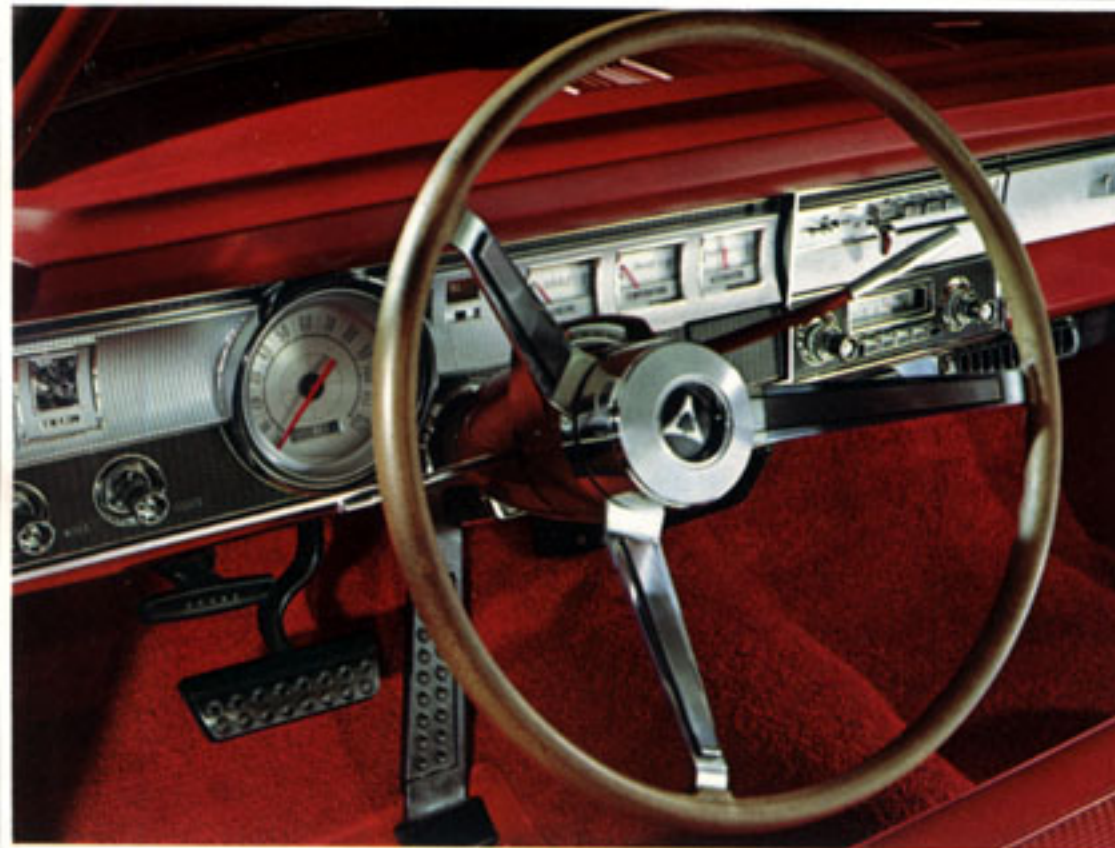
BUILT FOR AMERICA'S FUN-LOVING YOUNG FAMILIES!

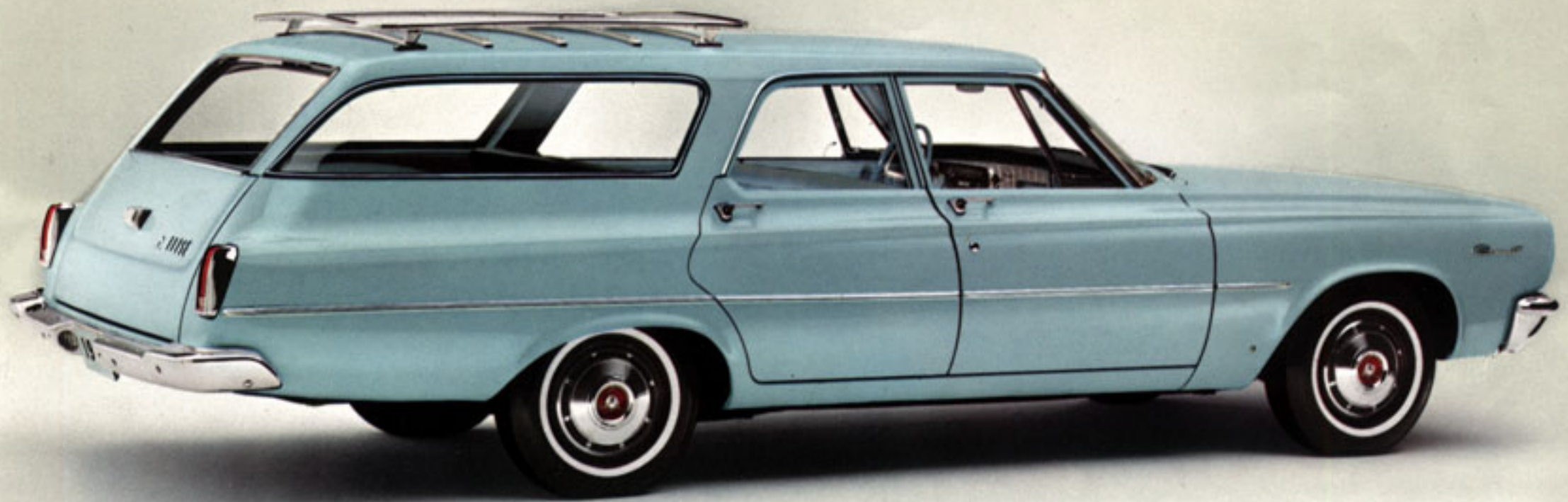
A Dart wagon is fun to drive. Easy to park. *Real* easy on regular gasoline (whether it's a Dart Six or Dart V8). Your wife will love a fun-size Dart 270 wagon for shopping and chauffeuring. You'll love it for its low-price luxury.

DART 270

You'll find many touches of luxury in every Dart 270 station wagon. Happily most of them come as standard equipment. Like the new heater-defroster. Check the wide choice of Dart options (shown in the back of this catalog). Tailor your Dart 270 wagon exactly to your taste and budget.

A more deluxe interior for very little more in price—that's Dart 270! These station wagon interiors are all-vinyl, of course. They're beautiful to look at. Beautifully easy to care for. Dart's famous chair-high seats give you comfort found only in larger, more expensive wagons.





EXTRA! IN STYLE, SIZE AND SPIRIT!

That's because Dodge Coronet has full-size room on an easy-to-handle wheel-base, an especially light price, and a lively spirit (choice of Slant Six or five hot Dodge V8's)! Serviceable all-vinyl interiors come as standard equipment.

CORONET

Ever see a wagon interior this good-looking? Nice way to surround yourself for business or pleasure. And Coronet's interior is completely washable, from headlining to floor mats. These chair-high, all-vinyl seats are as comfortable as they are practical, too.

See? We told you it was a bargain. Coronet wagons have as much cargo space as last year's full-size Dodge wagons! With a load floor that's almost 8 feet long when the tailgate's up, 9.8 feet long with the tailgate down. Coronet's cargo capacity? Glad you asked. It's a big 90.3 cubic feet!





FULL-SIZE ROOM WITH LOTS MORE LUXURY!

So you want a station wagon just a bit more plush? With added touches that say "deluxe." Choose this one. Coronet 440. Comes two ways: 2-seat model (6 passengers)—3-seat model (9 passengers). Few wagons cost less than the 440—none gives you so much for the money!

CORONET 440

Every kid gets a view of the road from the rear-facing fun seat on Coronet 440 3-seat models. A childproof electric tailgate window is standard on 3-seaters, optional (at slight extra cost) on other Coronet wagons. Window can be operated by dashboard switch or by ignition key in tailgate lock.

A bit richer is the Coronet 440 wagon with its own distinctive vinyl interior, carpeting underfoot, air foam front seat, plus backup lights and special "440" outside trim. We'd also like to have you notice the dashboard on this Coronet 440. It's extremely rich-looking for so economical a car.





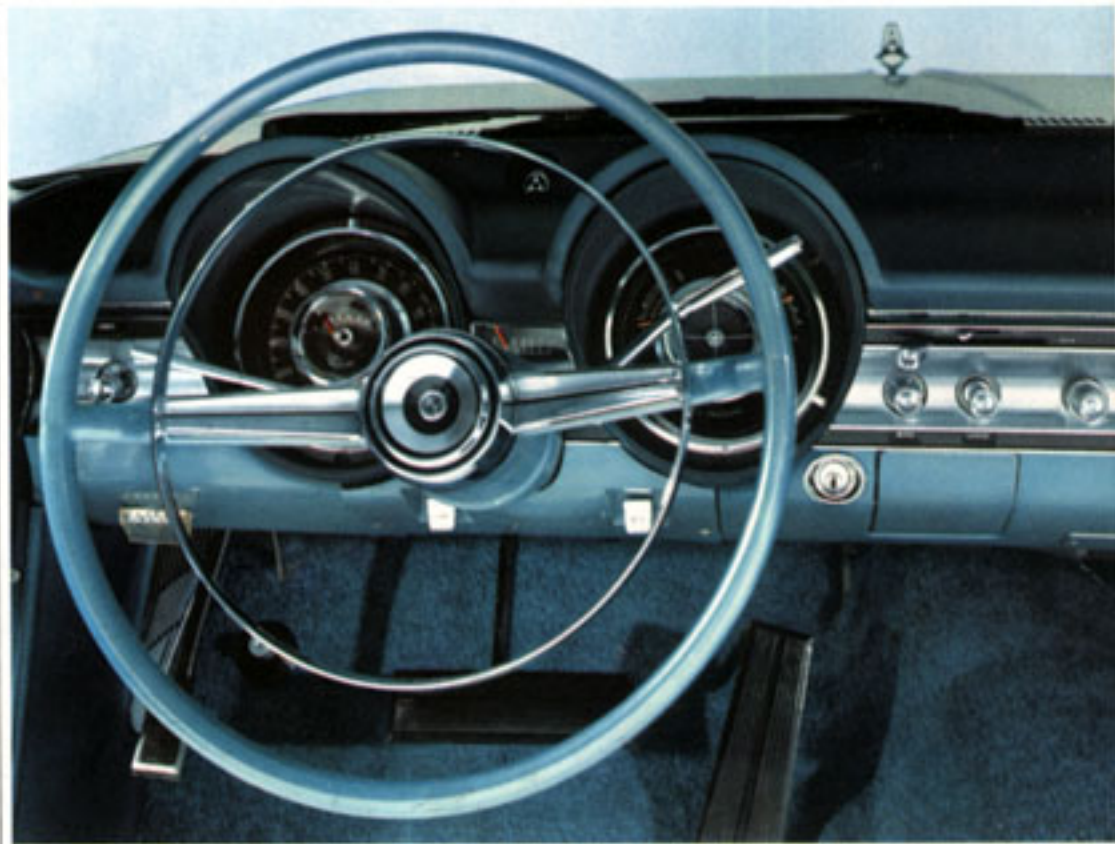
BIG WAGON BUYERS: TRY THIS ONE FOR SIZE!

Come see how big we've been about Polara. It's *all new!* New room inside, new styling out. Once your dealer lets you take a drive—you'll be spoiled for any other station wagon anywhere near Polara's price!

POLARA

Bring on the kids! Just try to wear out these Polara interiors! They're all-vinyl. Easiest to care for. Good-looking? You bet! Take your choice of colors: blue, turquoise, tan, red or gold! Polara station wagon interiors will stay "showroom new," too. Once over lightly with a damp cloth is all it takes!

Take the wheel of a Polara station wagon. Big and roomy—beautifully agile! Front visibility is unmatched at any price. New instrument panel is easy to read—day and night. Check the back of this catalog for the wide choice of options—and tailor a Polara wagon exactly to your taste!





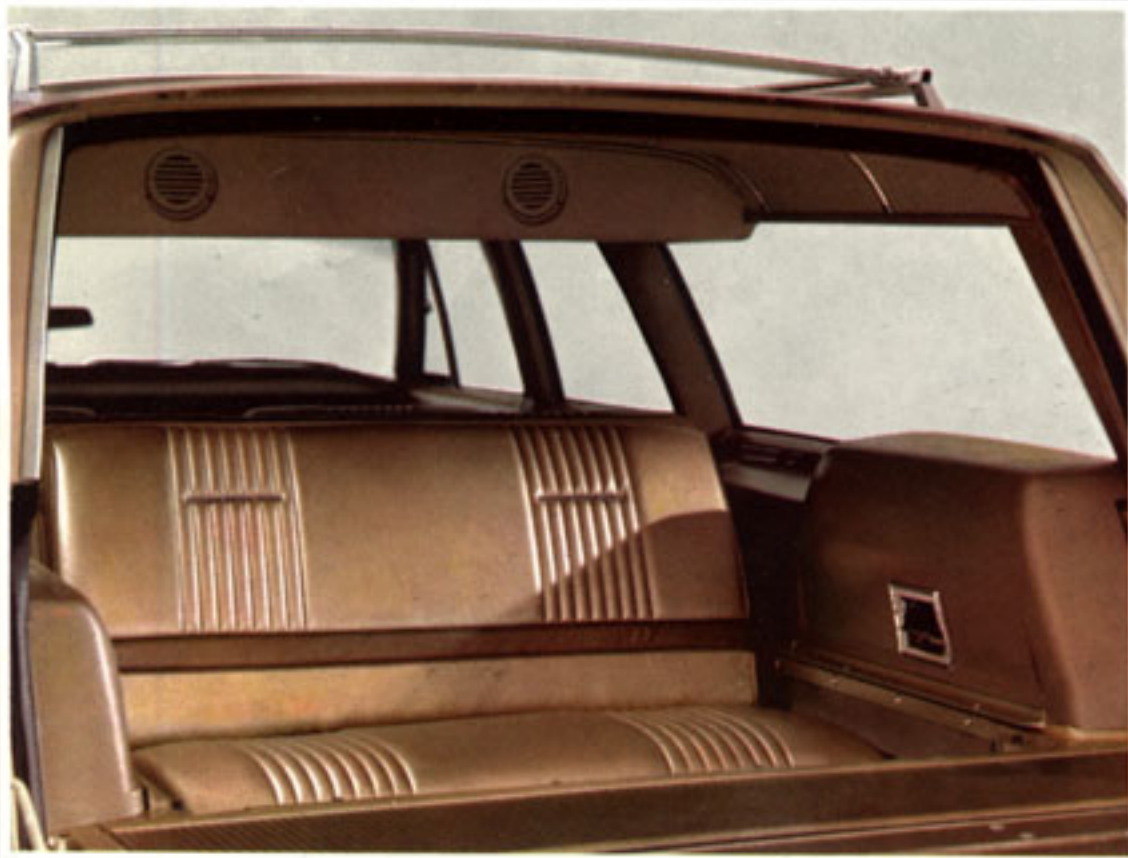
THE TOP OF THE DODGE STATION WAGON LINE FOR 1965!

Tops in roominess—in power. Certainly tops in luxury! This '65 Dodge Custom 880 station wagon shows the fanciest sedans a thing or two about elegant styling. (Have you ever seen anything as distinctive as that walnut grain inset?)

CUSTOM 880

The handsome new rear-facing fun-seat is bigger, more comfortable than ever! Third-seat wagon is available in both Polara and Custom 880 series. Comes equipped with electrically operated rear window, rear bumper step pads, and additional ceiling light in rear, for safety and convenience.

Here's the most luxurious interior you'll find on any station wagon in the Dodge Custom 880's price range. Premium-grade vinyl is carefully hand-fitted and remarkably comfortable. Custom 880 station wagon interiors are impeccable in every detail. They offer a new ultimate in station wagon elegance.





ALWAYS POST A REAR GUARD . . . stop sliding parcels and baggage from colliding with the front seat. It's easy with the new steel cargo bar in Polara and Custom 880 wagons behind the front seat. These big Dodge wagons have more convenience and good looks than any wagons on the road!



NO GLOVE BOX, THIS ONE! There's over ten cubic feet of storage room under the floor of Polara and Custom 880 2-seat wagons! Room for golf gear, cameras, packages of almost any shape. A lock for the compartment is optional at extra cost on Polara and Custom 880 station wagons.



AVOID THAT RUN-DOWN FEELING . . . when the second seat decides to fold down of its own free will. Not a chance with the new positive-action, double-latch mechanism, standard on Polara and Custom 880 wagons. Seatback folds down *only* when you deliberately disengage both latches.



GIVE THE "HEAVE HO" THE OLD HEAVE HO! Is there a bulky box, a steamer trunk, a rolled-up rug that keeps bugging you when you try to load it into your wagon? Forget it! Polara and Custom 880 wagons have a new *filler panel*. It eliminates the gap between tailgate and cargo floor.

New hints on being an efficient wagonmaster

(IT'S EASY
WHEN YOU OWN
A
'65 POLARA
OR
CUSTOM 880
WAGON)



DON'T DIG THAT SPARE . . . out from below everything! Just unlatch the good-looking cover from the new vertical tire well in Polara and Custom 880 wagons—and out comes the spare. It sure beats unloading your cargo (especially on a rainy night).



SOME SUITCASES ARE BIGGER THAN OTHERS. And some people want to carry more of them than others. Solution's simple: Get a luggage rack that adjusts to the size and number of suitcases. Exactly what we've done to the handsome new roof rack optional on Polara and Custom 880 wagons.



Dodge Sportsman and Custom Sportsman wagons are real multi-purpose vehicles. They work and play with equal ease! Dodge Sportsman wagons offer greater available power (170 Six is standard; 225 Six and 273 V8 are optional). The Dodge Custom Sportsman Wagon comes in three selected exterior colors to harmonize with its golden-tan, bison-grained vinyl interior, accented with contrasting charcoal metallic vinyl. Golden fiber glass interior panels, above

DODGE SPORTSMAN WAGONS

the beltline, add a neat, custom appearance. Depending on the number of seats installed, one of these wagons can carry up to eight full-sized passengers comfortably. Dodge Custom Sportsman cargo capacity goes up to a maximum of 213 cubic feet. The companion wagon, the Dodge Sportsman, offers the same room and power, plus a full choice of exterior colors, with a more utilitarian interior. Ask your Dodge dealer for the *Dodge Sportsman Wagon Catalog*.

Either the Dodge Sportsman or Custom Sportsman wagon makes an ideal companion for your family fun. Interiors can be converted, temporarily or permanently, for all forms of outdoor recreation. Camper conversions are manufactured by a number of different companies in several parts of the country. All conversions include various types of bed and bunk arrangements for a family, plus a dinette, kitchen facilities (including both stove and sink), and ice box or refrigerator. Many conversions can also include an expanding top for plenty of stand-up headroom. The availability of such options as 15-inch wheels and a V8 engine makes Dodge the only wagon of this type so ideally suited for conversion to a camper. The additional ruggedness and toughness that are standard equipment on every Dodge Sportsman wagon are additional reasons why your choice of Dodge for a camper conversion is a wise one. Your Dodge Dealer can give you more details on the wide variety of options available in a camper conversion to provide you with go-anywhere mobility and comfort!



POPULAR OPTIONS

NOT EVERYBODY LIKES OR WANTS THE SAME THINGS

(So take your pick. We'll equip your new Dodge wagon exactly the way you like it.)



AIR CONDITIONING

Dodge has improved automobile air conditioning for '65. New controls are easier to adjust. Air direction is fully adjustable to suit your individual comfort. The unit, itself, has ample cooling capacity for the most sweltering climates. Operation is remarkably quiet, and ducts are tucked up out of the way.

BACKUP LIGHTS

Light your way automatically—whenever you shift into reverse. Available with both manual and automatic transmissions. Optional on all Dodge wagons, standard on Coronet 440 wagons.

BUMPER GUARDS

They add not only impact protection, but good looks as well. Dart wagons offer both front and rear bumper guards. Coronet wagons can be equipped with front bumper guards. Polara and Custom 880 wagons feature rear bumper guards standard on 3-seat models, optional on 2-seaters; front guards optional on Polara and Custom 880 models.

TWO-TONE EXTERIOR PAINT

A wide selection of two-tone paint options is available on Dart, Dart 270, Coronet, Coronet 440 and Polara wagons.



RADIO

Instant-play transistorized radios provide rich, full tone with extremely small power drain. All types feature push-button tuning for favorite stations. AM radios are available on all Dodge wagons; AM/FM radios are offered on Coronet, Coronet 440, Polara and Custom 880 wagons.

FOUR-ON-THE-FLOOR

A fully synchronized, 4-speed manual transmission is offered on all Dodge wagons. The shift pattern features short "throws" for quick, easy shifting. Available on Dart/Dart 270 wagons with optional 225 Six and 273 V8; on Coronet/Coronet 440 wagons with optional 361 V8 and 383 V8; on Polara and Custom 880 wagons with standard 383 (2 bbl.) V8 and optional 383 (4 bbl.) V8. Standard on Coronet/Coronet 440, Polara, and Custom 880 wagons with optional 426 V8 engine.



ELECTRIC TAILGATE WINDOW

This is standard equipment on all Custom 880 wagons, as well as 3-seat models of Polara and Coronet 440. Electrically operated tailgate window is optional on Dart, Dart 270, Coronet, Coronet 440 and Polara 2-seat wagons. Dash switch or door key inserted in tailgate lock controls tailgate window.



DELUXE WHEEL COVERS

Full wheel covers really dress up a station wagon. Dodge offers distinctively different covers for Dart, Coronet, Polara and Custom 880 wagons. Whichever you choose, you can be sure they're rust-resisting.

POWER BRAKES

If you plan to haul maximum loads at highway speed—you'll appreciate the added reserve of power brakes. They are available at extra cost on all Dodge wagons.

POWER STEERING

Ladies love it! Makes any wagon easier to park. Offered on all Dodge wagons.



POWER WINDOWS

Optional on Coronet 440, Polara and Custom 880 wagons only. All operating windows can be controlled from driver's master control or separately from individual controls on each door.

PADDED DASH

A good-looking safety feature optional on all Dart/Dart 270 and Coronet/Coronet 440 wagons. Standard on Polara/Custom 880 wagons.

REMOTE-CONTROL MIRROR

Outside mirror on driver's side is quickly and easily adjustable from the inside. Optional on Dart/Dart 270, Coronet/Coronet 440, Polara and Custom 880 wagons.

LIGHT PACKAGE

Optional on Coronet/Coronet 440 and Polara wagons: parking brake warning light, glove box light, and an additional dome light to illuminate rear cargo area (std., 3-seat wagons). Also included on Polara: map and courtesy light and ashtray light. All above lights are standard on 2-seat and 3-seat Custom 880 wagons. Light package not offered on Dart/Dart 270 wagons.

VARIABLE-SPEED WINDSHIELD WIPERS AND WASHERS

You can vary the speed of the wipers to suit the amount of rain or snow outside. New electric windshield washers give you positive fingertip action.

TINTED GLASS

Optional as "windshield only" or as tinted glass all around. Reduces eyestrain and inside temperature in the hot sun.



ROOF LUGGAGE RACK

Here's an option that looks smart even when it's not working! A roof rack puts the wide flat station wagon roof to work whenever you need the added carrying capacity. Special note: Polara and Custom 880 models offer an adjustable roof rack. Ask your dealer to demonstrate.

RETRACTABLE FRONT SEAT BELTS

Front seat belts are standard, of course. However, the Dodge optional retractable mechanism keeps outboard seat belts neatly rolled and out of the way when not in use. Belts as well as the retractor assemblies are color-keyed to wagon interiors.

DELUXE STEERING WHEEL

A 3-spoke woodgrain sports steering wheel is available on Dart 270 wagons. Polara and Custom 880 wagons can also be equipped with a handsome sports steering wheel. No optional deluxe steering wheel is offered on Coronet and Coronet 440 models.



SURE GRIP DIFFERENTIAL

Sand, snow, and mud hold no terror for this added performance option. Power is transferred to the wheel with the best traction. You'll want Sure Grip if you're a sportsman, camper, or use your wagon for off-the-road business. Available on all Dodge wagons.

CLOCK

Dependable Dodge instrument panel clocks continually rewind themselves electrically. Easy to read, because they're circular in design. Sweep second hand. Illuminated at night. Not available on Dart or Dart 270 wagon models.



TORQUEFLITE AUTOMATIC TRANSMISSION

Regarded by many independent automotive experts as the finest automatic transmission in the business. Incredibly smooth and quiet at all engine speeds. Built to deliver top mileage economy. Protected by 5-Year/50,000-Mile Warranty. *



WIND DEFLECTORS

Designed to keep rear window free of dust accumulation. Offered on Dart and Dart 270 wagons, integral with assist handles on Coronet and Coronet 440 wagons. All have bright chrome finish.

GLARE-RESISTANT MIRROR

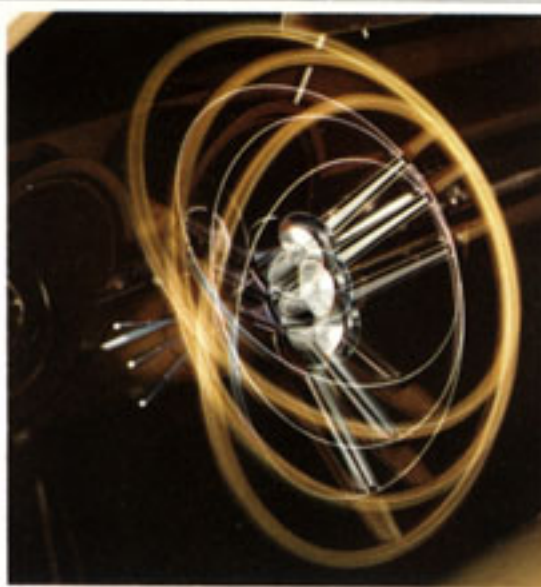
A flick of a switch reduces annoying headlight reflection from other cars approaching from behind.

WHITE SIDEWALL TIRES

Know of anything that looks smarter? Dress up your Dodge wagon with whitewalls!

POPULAR OPTIONS...CUSTOM 880/POLARA ONLY

In addition, the following options are offered on the luxurious Custom 880 and Polara station wagons only:



ADJUSTABLE STEERING WHEEL

This deluxe steering wheel adjusts to seven different positions. Helps reduce fatigue on long trips. It tilts forward for added convenience. Available only when wagon is also equipped with optional 3-spoke sports steering wheel, power steering, and TorqueFlite automatic transmission (or 4-speed manual).

ASSIST HANDLES

For the convenience of 3rd seat passengers, or when loading items on roof rack. Heavily chromed, they add a custom touch.



AUTO PILOT SPEED CONTROL

This amazing device lets you relax and enjoy long motoring trips even more. It maintains your preset speed, yet is easily disengaged for instant braking or to increase your speed. Available only when Custom 880 or Polara wagon is also equipped with TorqueFlite automatic transmission and power brakes.

POWER SEAT

Gives six-way adjustment—up, down, forward, backward and tilt back or tilt forward—all at the touch of the seat adjustment switch.

SILL MOULDING

A stainless steel moulding just below the doors adds a custom touch. Available on Custom 880 and Polara wagons.



DUAL AIR-CONDITIONING

Two separate units! Provide all passengers with maximum cooling and dehumidifying. Second cooling unit is mounted behind second seat.



ELECTRIC DOOR LOCKS

By simply depressing the push button on either front door (or key-locking it from the outside), all four doors are automatically and securely locked!

TRIM MOULDING

Bright mouldings around side windows add an extra-dazzling touch to Polara station wagons. Mouldings are standard on Custom 880 wagons.

LOCKABLE LUGGAGE COMPARTMENT

Keep valuables (cameras, overcoats, small luggage, etc.) safe and out of sight. Lock is offered on 2-seat Custom 880 and Polara wagons only.



TRAILER TOWING PACKAGE

All Dodge wagons have inherent performance characteristics designed to make them excellent towing vehicles. They have the power, directional stability, riding and handling that make trailer towing safe and fun!

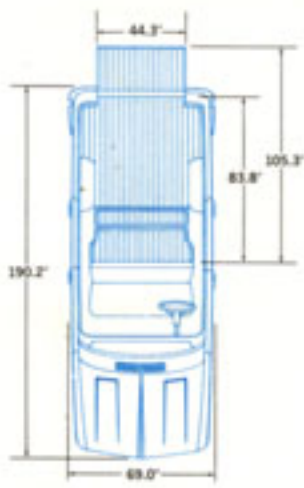
FOR CUSTOM 880, POLARA, CORONET 440, and CORONET WAGONS: Maximum loaded gross trailer weight (Custom 880/Polara—5500 lbs.), (Coronet 440/Coronet—4000 lbs.). Trailer towing package is required for trailers with gross weight of 2500 lbs. (Custom 880/Polara) and 2000 lbs. (Coronet 440/Coronet). Standard package includes high-capacity cooling system with high-pressure (16 psi) cap, large 18" diameter fan, fan shroud, yoke-to-hood air seal. 3.23 axle ratio. Heavy-duty suspension, front and rear. For Coronet: front sway bar (standard on Polara and Custom 880 models), special 11" diameter heavy-duty brakes, on all wheels (not self-adjusting). Heavy-duty turn signal flasher. Heavy-duty stop lamp switch. Recommended additional optional trailer towing equipment (Custom 880, Polara, Coronet 440 and Coronet wagons): Sure Grip differential, high output (46 amp) alternator, heavy-duty (70 amp-hr) battery (std., Polara/Custom 880) with battery heat shield. Power steering. High-performance optional engines. For Coronet: power brakes. In addition to the standard trailer towing package, the following *equipment is required*: automatic transmission, Coronet 440, Coronet, Polara, and Custom 880 (Note: 3-speed and 4-speed manual transmissions not available with trailer towing package); power brakes, Polara and Custom 880. Tires: (8.25 x 14, Coronet 440/Coronet).

FOR COMPACT DART 270 AND DART WAGONS: Maximum gross trailer weight: 2000 lbs. Trailer towing package required for trailers with gross weight of 1500 lbs. Standard package includes special radiator, high-pressure (16 psi) cap, larger (17" diameter) cooling fan, fan shroud, yoke-to-hood air seal. 3.23 axle ratio with 225 Six and V8; 3.55 ratio with 170. Heavy-duty front and rear suspension. Front sway bar. Recommended additional optional trailer towing equipment: (Dart 270 and Dart wagons) power steering, power brakes, Sure Grip differential (available with 225 Six and 273 V8 engines only). High output (46 amp) alternator. Heavy-duty (70 amp-hr) battery. Optional 225 Six or 273 Dart V8 engine. Additional *required equipment* with trailer towing package: oversize brakes, 7.00 x 13 tires (std., V8 wagons) and automatic transmission. (Note: 3-speed and 4-speed manual transmissions not available with trailer towing package.)

* PROTECTION LIKE THIS IS STANDARD EQUIPMENT

HERE'S HOW DODGE'S 5-YEAR/50,000-MILE ENGINE AND DRIVE TRAIN WARRANTY PROTECTS YOU: Chrysler Corporation confidently warrants all of the following vital parts of its 1965 cars for 5 years or 50,000 miles, whichever comes first, during which time any such parts that prove defective in material and workmanship will be replaced or repaired at a Chrysler Motors Corporation Authorized Dealer's place of business without charge for such parts or labor: engine block, head and internal parts, intake manifold, water pump, transmission case and internal parts (excepting manual clutch), torque converter, drive shaft, universal joints, rear axle and differential, and rear wheel bearings.

REQUIRED MAINTENANCE: The following maintenance services are required under the warranty—change engine oil every 3 months or 4,000 miles, whichever comes first; replace oil filter every second oil change; clean carburetor air filter every 6 months and replace it every 2 years; and every 6 months furnish evidence of this required service to a Chrysler Motors Corporation Authorized Dealer and request him to certify receipt of such evidence and your car's mileage. Simple enough for such important protection.



DART/DART 270 WAGONS

Wheelbase.....106.0"
Overall height.....54.5"
Tread (front/rear).....55.9"/55.6"

PASSENGER SPACE (front/rear)

Headroom.....38.2"/37.6"
Legroom.....40.7"/34.2"
Hiproom.....56.9"/57.0"
Shoulder room.....54.2"/54.4"
Cargo volume.....68.3 cu. ft.

ENGINES

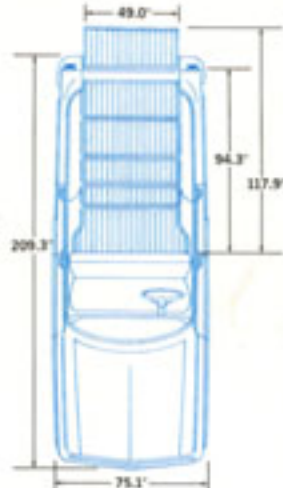
170 Six (1 bbl.) 101 horsepower. Standard for 6-cylinder wagons. Regular fuel.
225 Six (1 bbl.) 145 horsepower. Optional for 6-cylinder wagons. Regular fuel.
273 V8 (2 bbl.) 180 horsepower. Standard for V8 wagons. Regular fuel.

TRANSMISSIONS

Manual 3-speed standard on all Dart wagons. TorqueFlite automatic 3-speed, optional on all Dart wagons.
Manual 4-speed (synchronized), optional on Dart wagons with 225 Six or 273 V8 engines. Not available with 170 Six engine.

STANDARD EQUIPMENT

All-Vinyl Interiors • Front Door Armrests • Rear Armrests with Ash Receivers • Cigarette Lighter • Perforated Vinyl Headlining • Front Seat Belts • Sun Visors • Full Horn Ring (Dart 270 Only) • Heater and Defroster • Inside Rear View Mirror • Directional Signals • Self-Adjusting Brakes • Alternator • Torsion-Bar Front Suspension • Oriflow Shock Absorbers • Acrylic Enamel Finish in Choice of 14 Colors • Blue, Turquoise, Tan or Red Interiors • Long Life Major Chassis Lubrication, Good for 32,000 Miles • Full Carpeting (Dart 270 Only)



CORONET/CORONET 440 WAGONS

Wheelbase.....116.0"
Overall height.....55.9"
Tread (front/rear).....59.5"/58.5"

PASSENGER SPACE (front/rear)

Headroom.....39.5"/39.5"
Legroom.....41.9"/36.5"
Hiproom.....60.8"/61.0"
Shoulder room.....57.5"/57.8"
Cargo volume.....90.3 cu. ft.

ENGINES

225 Six (1 bbl.) 145 horsepower. Standard for 6-cylinder wagons. (Not available on Coronet 440 3-seat wagons.) Regular fuel.
273 V8 (2 bbl.) 180 horsepower. Standard for V8 wagons. Regular fuel.
318 V8 (2 bbl.) 230 horsepower. Optional for all V8 wagons. Regular fuel.
361 V8 (2 bbl.) 265 horsepower. Optional for all V8 wagons. Regular fuel.
383 V8 (4 bbl.) 330 horsepower. Special high-performance engine. Optional for all V8 wagons. Premium fuel.
426 V8 (4 bbl.) 365 horsepower. Optional for all V8 wagons. Premium fuel.

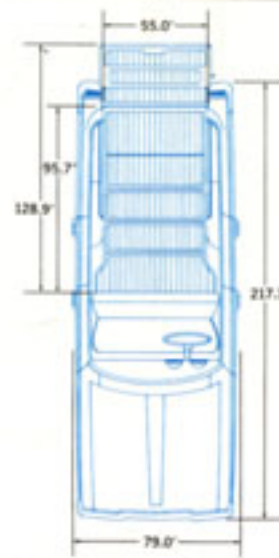
TRANSMISSIONS

Manual 3-speed standard on all Coronet wagons, except 426 V8.
TorqueFlite automatic 3-speed, optional on all Coronet wagons.

Manual 4-speed (synchronized), standard with 426 V8. Optional on Coronet wagons with 361 V8, 383 V8 engines. Not available with 225 Six, 273 V8 and 318 V8 engines.

STANDARD EQUIPMENT

All-Vinyl Interiors • Full Carpeting (Coronet 440 Only) • Front Door Armrests • Rear Armrests with Ash Receivers • Air Foam Front Seat (Coronet 440 Only) • Cigarette Lighter • Front Seat Belts • Sun Visors • Heater and Defroster • Inside Rear View Mirror • Directional Signals • Backup Lights (Coronet 440 Only) • Self-Adjusting Brakes • Alternator • Torsion-Bar Front Suspension • Oriflow Shock Absorbers • Acrylic Enamel Finish in Choice of 14 Colors • Blue, Turquoise, Tan or Red Interiors • Long Life Major Chassis Lubrication, Good for 32,000 Miles



POLARA/CUSTOM 880 WAGONS

Wheelbase.....121.0"
Overall height.....57.5"
Tread (front/rear).....62.0"/60.7"

PASSENGER SPACE (front/rear)

Headroom.....38.8"/37.8"
Legroom.....42.0"/39.6"
Hiproom.....63.3"/63.5"
Shoulder room.....60.0"/60.0"
Cargo volume.....96.9 cu. ft.

ENGINES

383 V8 (2 bbl.) 270 horsepower. Standard for Polara and Custom 880 wagons. Regular fuel.
383 V8 (4 bbl.) 315 horsepower. Optional for Polara and Custom 880 wagons. Premium fuel.
413 V8 (4 bbl.) 340 horsepower. Optional for Polara and Custom 880 wagons. Premium fuel.
426 V8 (4 bbl.) 365 horsepower. Optional for Polara and Custom 880 wagons. Premium fuel.

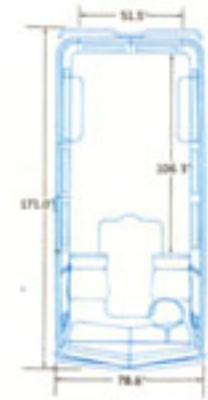
TRANSMISSIONS

Manual 3-speed standard on Polara and Custom 880 wagons with 383 V8 engines only. TorqueFlite automatic 3-speed, optional on all Polara and Custom 880 wagons. (Std. w/413 engine.)
Manual 4-speed (synchronized), standard with 426 V8. Optional on Polara and Custom 880 wagons with 383 V8 engines. Not available with 413 V8 engine.

STANDARD EQUIPMENT

All-Vinyl Interiors • Full Carpeting • Walnut Grain Exterior Applique (Custom 880 Only) • Dual Circular Instrument Cluster • Padded Dash • Front Door Armrests • Rear Armrests with Ash Receivers • Front Seat Belts • Sun Visors • Inside Rear View Mirror • Cigarette Lighter • Light Package (Custom 880 Only) • Rear Center Dome Lamp (1) • Vinoleum-Covered Cargo Compartment and Tailgate • Rear Bumper Guards and Step Pads (2) • Electric Tailgate Window Lift (1) • Alternator • 70-Amp-Hour Battery • Torsion-Bar Front Suspension with Sway Bar • Oriflow Shock Absorbers • Acrylic Enamel Finish in Choice of 16 Colors • Blue, Turquoise, Tan, Red or Gold Interiors • Long Leaf Spring Rear Suspension • Heavy-Duty, Self-Adjusting Brakes • Long Life Major Chassis Lubrication, Good for 32,000 Miles

(1) Except Polara 2-Seat Wagons.
(2) 3-Seat Models Only.



SPORTSMAN/CUSTOM SPORTSMAN

Wheelbase.....90.0"
Tread (front/rear).....60.2"/60.1"
With standard equipment.

INTERIOR SPACE

Maximum inside width.....67.7"
Width between rear wheel wells.....48.8"
Height, inside.....53.7"
Height, side and rear doors.....47.4"
Width, side and rear doors.....51.5"
Available cargo volume.....213 cu. ft.

ENGINES

170 Six (1 bbl.) 101 horsepower. Standard on Sportsman and Custom Sportsman wagons. Regular fuel.
225 Six (1 bbl.) 140 horsepower. Optional on Sportsman and Custom Sportsman wagons.
273 V8 (2 bbl.) 174 horsepower. Optional on Sportsman and Custom Sportsman wagons.

TRANSMISSIONS

Manual 3-speed (Type A903) standard with 170 Six engine only.
Manual 3-speed (Type A745, heavy-duty) optional with 170 Six, required (at extra cost) with 225 Six and 273 V8 engines.
LoadFlite 3-speed automatic (selector lever on dash). Optional with 170 Six, 225 Six, and 273 V8 engines.

STANDARD EQUIPMENT

SPORTSMAN and CUSTOM SPORTSMAN—All-Vinyl Bucket Front Seats • Rubber Floor Mats • Front Seat Belts • Heavily Insulated Engine Compartment • Sun Visor • Dome Lights • Right-Side Door Step • Door Locks for All Doors • Self-Adjusting Brakes • Oriflow Shock Absorbers • Alternator • Directional Signals • Stabilizer Bar

CUSTOM SPORTSMAN ONLY—Fiber Glass and Vinyl Interior • Spare Tire Cover • Cigar Lighter • Dual Sun Visors • Full Interior Headlining • Custom Floor Mats • Glove Box Door • Custom Instrument Panel • Custom Steering Wheel with Chrome Horn Ring • Outside Rear View Mirror • Chrome Hubcaps • Chrome Bumpers • Oil Pressure Gauge (replacing warning light)



Rear axle ratios, availability of ratios with various engine/transmission combinations are listed in the 1965 Dodge Full Line Catalog and Compact Truck Catalog. Ask your dealer for a free copy. Photographs in this brochure feature extra cost options and accessories. Check your Dodge Dealer for a complete listing of availability and prices.

Dodge comes on big for '65

DODGE DIVISION



CHRYSLER
MOTORS CORPORATION

All product illustrations and specifications herein are based on authorized information. Although all descriptions are believed correct at publication approval, accuracy cannot be guaranteed. Dodge Division reserves the right to make changes from time to time, without notice or obligation, in prices, specifications, colors and materials, and to change or discontinue models.

1965 Dodge Station Wagon Catalog

Litho in U.S.A. 12/64 81-205-0028