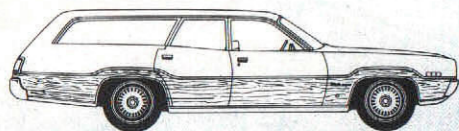


# 1971 Plymouth Station Wagons

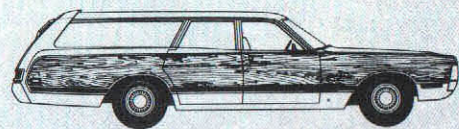


**Coming  
Through.**

## The 1971 Plymouth wagons are coming through for you.



Satellite Regent, Satellite Custom, Satellite... Pages 4-7



Sport Suburban, Custom Suburban, Suburban... Pages 8-11

Fold out back cover for:  
Engines, Options, Colors

We're coming through with the style, the room, the power and the new features that will make you the wagon master.

1971 Plymouth Satellite, totally new features inside and a totally new body outside. Maximum room in a medium size.

1971 Plymouth Fury Suburban, the big one. Big on room, big on looks. You can take it all away in a Suburban wagon.

### Coming through with new features and options.

1971 Satellite Wagons: All-new on the outside • All-new on the inside • Ventless side glass • All regular-fuel engines • Three-way tailgate with an automatic lock • New options like rear airfoil • Stereo Tape Cassette System with the ability to record off the radio

plus a microphone for dictation. 1971 Suburban Wagons: New front-end treatment • New interiors • Ventless side glass • New simulated wood-grain highlights • New Torsion-Quiet Ride • Headlamp washers (Sport Suburban only) • And many more.

### The wide open spaces.

Big comfortable interiors that look as good as they feel. And to help them stay that way: fabrics, vinyls, carpeting and finishes that are easy to maintain. Easy to keep looking new. Like the special Vinoleum covering in the rear area. More durable, and better looking than just a coat of paint.

Big, wide, open spaces you can use. Suburban and Satellite wagons will take 4' x 8' sheets of plywood lying flat on the floor... and the tailgate closes easily. That gives Satellite more room than any other mid-size wagon. Plymouth wagons: Comfortable room. And cargo room. In 2- and 3-seat models.

### Running the show.

Power you can count on. Engines that are ready to go. Anywhere. Anytime. If Satellite's your style, choose from the 225 Six (except Regent) or the 318 V-8, they're standard. For power-plus take along the optional 383 V-8. If you're a Suburban man, you've got the standard 318 V-8 going for you. More power? You can go all the way to the optional 440, and that's a powerful way to go.

### Wagons.

We're coming through with new developments in cleaner air devices for our engines, with more engines than ever before that run on regular gas.

Choose your engine and then your transmission. The easy going optional TorqueFlite automatic, or the smooth three-speed manual. Either way you've got the show on the road.

### Versatile tailgates.

For 1971, the Satellite wagons feature a newly designed three-way tailgate. A Chrysler Corporation exclusive for intermediate-size wagons. It opens down for things. Out for people. And can be opened with the glass up. Satellite features an automatic tailgate lock. When the ignition key is on, the tailgate is automatically locked. A switch on the dashboard allows for unlocking from the driver's seat. That's Plymouth's back door. A tailgate that works for you many ways.

### What else is new?

A lot. Your Satellite wagon features, as optional equipment, a rear airfoil. And it's standard on your Suburban. Not only does the airfoil look great, it works. When the glass is up, it helps to keep it clean. When the glass is down, the airfoil works to help keep dust and fumes outside. Where they belong.

Here's a new idea in trim. The simulated wood-grain side panels on our Sport Suburban and Satellite Regent wagons will be color-keyed to which-

ever of the 18 exterior colors you choose. You can actually see what's new.

Torsion-Quiet Ride is also new this year on all Suburban wagons. It's a unique blending of unibody construction, torsion-bar suspension, and the Sound Isolation System. Combined to give you the ultimate in smooth, quiet driving comfort.

### Exercise your options.

There are wagon-working options like the chrome luggage rack, and the headlamp washers with nylon scrub brushes (Sport Suburban only). Car-comfort options like power steering and brakes. (Disc brakes on Suburbans.) And people-pleasing options like special dual air conditioning, with four extra vents to cool your wagon from beginning to end (Suburban wagons only). Or our new AM/FM stereo radio and cassette tape player with the ability to record off the radio plus a microphone for dictation. All kinds of options. All you have to do is ask.

### The choice is yours.

Choose from three Fury Suburbans and three Satellite wagons. Choose two- or three-seat models. Whichever Plymouth wagon you decide on, you're getting the solid, long lasting value that Chrysler Corporation builds into every car.

Plymouth is coming through for you. With the comfort of a car, and the advantages of a wagon. Together. In the 1971 Suburbans. And Satellite wagons. Don't go without.

### Satellite Regent, Satellite Custom, Satellite Wagon Standard Features

37 Amp alternator • Color-keyed base armrests (Satellite only) • Instrument panel ashtray • 46 Amp/Hr. battery • Self-adjusting brakes • Cigar lighter • Clean Air System • Closed-crankcase vent system • Coat hooks • Directional signals with lane-change feature • 225 CID Six (except Regent) or 318 CID V-8 engines • Color-keyed rubber floor mats in passenger compartment (Satellite only) • Color-keyed Vinoleum in cargo area • Glove box lock • Head restraints • Heater and defroster • Dual horns (optional Satellite) • Hubcaps (Wheel covers on Satellite Regent) • Instrument panel safety padding • Back-up lights • Center dome light • Dual brake system warning light • Parking brake warning light • Side marker lights with reflectors • Inside, rearview, day/night mirror • Outside left manual mirror • Roadside warning flashers • Seat belts • Front shoulder belts • Padded sun visors • Combination gate-and-door tailgate • Bias-belted tires • Three-speed column-mounted manual transmission • Safety-Rim wheels • Electric windshield washers • Two-speed windshield wipers • Bright based armrests# • Color-keyed passenger compartment carpet#, Satellite Custom trim and ornamentation (Satellite Custom only) • Deluxe wheel covers† • Color-keyed simulated wood-grain vinyl side appliqué\* • Satellite Regent trim and ornamentation\*

\*Regent only  
†Optional on Satellite, Satellite Custom  
#Satellite, Custom, Regent only

### Sport Suburban, Custom Suburban, Suburban Standard Features

(All of the Satellite features except 225 CID engine, plus the following)  
Power tailgate window lift • Suburban trim and ornamentation (Suburban only) • Armrests with bright finished base† •

Color-keyed carpet in passenger compartment\*\* • Glove box light\*\*\* • Ash receiver light\*\*\* • Custom Suburban trim and ornamentation (Custom Suburban only) • Rear dome light\* • Sport Suburban trim and ornamentation (Sport Suburban only)

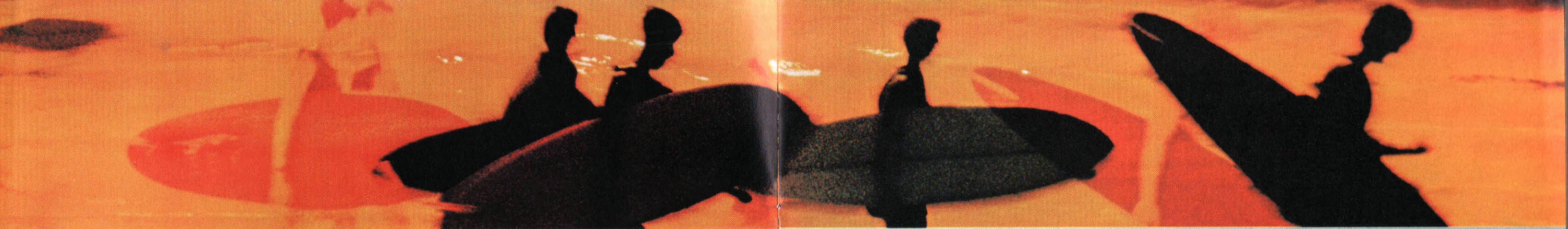
\*Optional on Suburban, Custom Suburban—2-seat wagons  
\*\*Opt. on Suburban—2-seat wagons  
\*\*\*Opt. on Suburban  
†Not available, Suburban

### Standard Safety Features

Large rear reflectors and lights • Fuel tank impact protection • Lane-change turn signal • Locking steering column • Superior seat belt anchorage • Energy-absorbing steering column • Energy-absorbing front seat-back and armrests • Energy-absorbing instrument panel padding • Seat belts, all seating positions • Shoulder belts, 2 front • Manual door locks—levers have non-override lock feature, except driver's door • Interlocking door latches • Inside door release levers, flush-type • Padded sun visors • Dual braking system with warning light • Side marker lights • Hazard warning light system • Windshield wipers, 2-speed, electric • Windshield washers, electric • Head restraints, 2-front • Left outside rearview mirror • Vinyl-clad day/night inside rearview mirror

### '71 Plymouth Wagon Dimensions

	Suburban	Satellite
a. Wheelbase	122 in.	117 in.
b. Overall Length	220.2 in.	210.9 in.
c. Overall Width	79.6 in.	79.2 in.
d. Track, Front	62.1 in.	60.1 in.
e. Track, Rear	63.4 in.	63.4 in.
f. Shoulder Room, Front	63.2 in.	59.2 in.
g. Shoulder Room, Rear	62.7 in.	59.3 in.
h. Width between Wheelhousings	48.5 in.	48.5 in.
i. Maximum Cargo Length at Floor	103.5 in.	99.8 in.



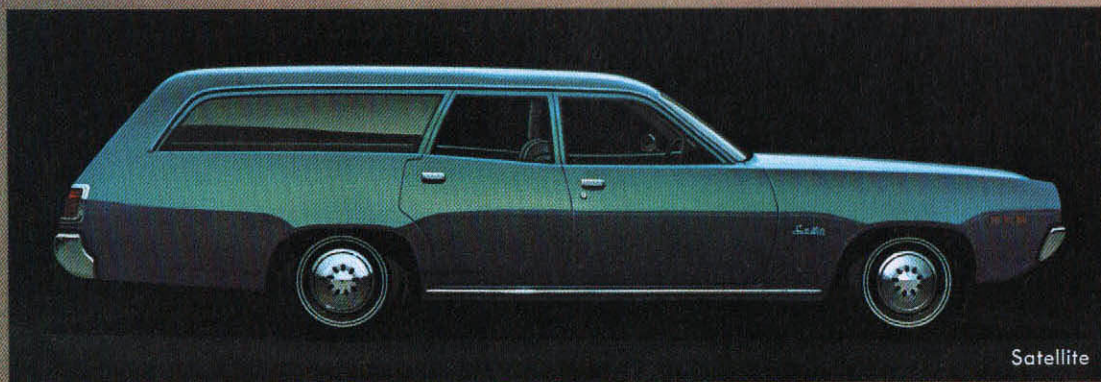
Satellite Custom

### Satellite Wagons

The all-new mid-size wagons with the big ideas. Our most luxurious Satellite wagon is the Regent. Simulated wood-grain side panels, carpeting, and more. All standard. With 91.3 cubic feet of cargo-carrying room. Compared to competition, our Satellite Custom more than holds its own. The Satellite doesn't look or ride like our lowest-priced wagon. But it is. Bias-belted tires, 225 cu. in. Six or 318 cu. in. V-8, and all. That's Plymouth coming through. With the 1971 Satellite wagons.



Satellite Regent



Satellite

## Satellite Wagons . . . coming through with big ideas.

**A.** Optional airfoil. Even when it's not helping to keep the rear window clean, it looks great. **B.** For those times when it's best the tailgate doesn't open at all...an automatic lock. When the ignition key is on, the tailgate is locked. A switch on the instrument panel

allows for unlocking. **C.** Opens down for things like a 4' x 8' piece of plywood lying flat on the floor. And yes, the door will close easily. **D.** Plenty of comfortable room for extra passengers. In our optional, rear-facing third seat. **E.** The standard Satellite

instrument panel. High style in our lowest-priced model. (Air conditioning optional.) **F.** Satellite Regent instrument panel. Easy-to-read gauges surrounded with simulated wood-graining. **G.** A new tailgate. Opens down for things. Out for people. And

opens with the glass up. **H.** Front bumper guards. In case somebody bumps into you. Optional. **I.** Deluxe wheel covers. Standard on the Satellite Regent. Our other optional wheel covers would make a handsome addition to your Custom or Satellite.

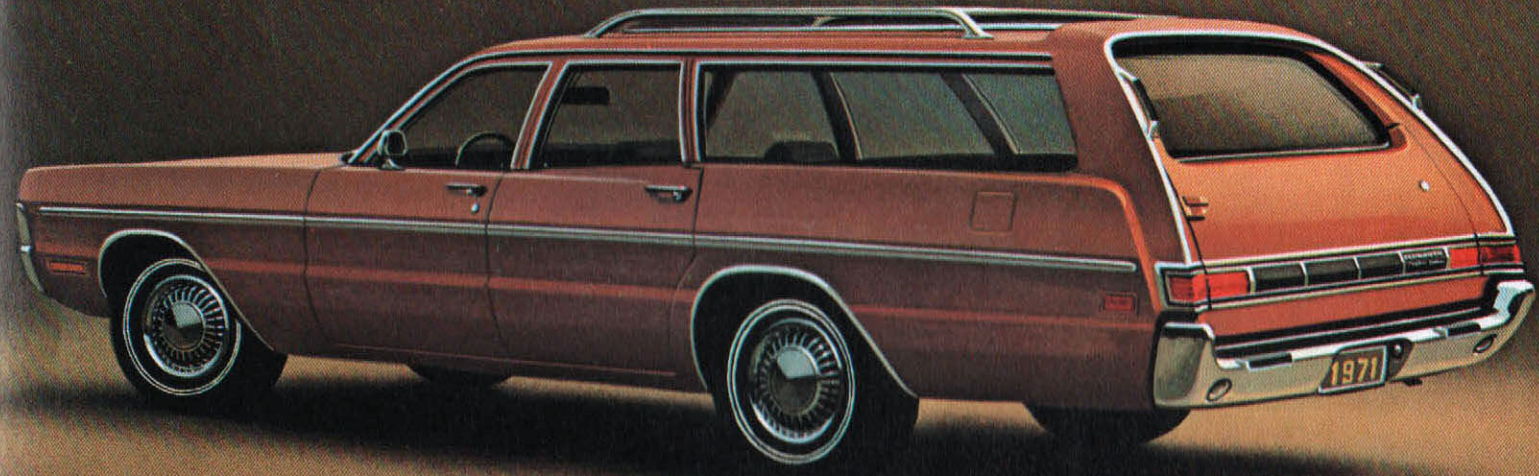
Set of four. **J.** If some of your best things come in small packages, these storage trays are the place to keep them. **K.** Our under-floor storage compartment. Standard on two-seat models. **L.** Optional Regent Sport bench. Our finest cloth-and-vinyl seat

in your choice of three colors. **M.** Standard Custom and Regent bench. All-vinyl comfort and durability. Choose from four colors.





Sport Suburban



Custom Suburban

### Fury Wagons

Coming through with luxury, new Torsion-Quiet Ride for smooth, solid comfort, and 104.2 cubic feet of stow-away space. With the Sport Suburban you get the best. Standard simulated wood-grain vinyl trim, color-keyed to any of 18 colors. A two-way tailgate with power window and a carpeted passenger compartment mean our Custom Suburban can work . . . and have a good time. The Suburban has great looks, and a low price. And on every Fury wagon, the standard airfoil not only looks great, but helps keep the rear window clean and dust outside.



Suburban

## Fury Wagons...coming through with big ideas.

**Coming through with comfort and convenience.**

**A.** Moving right along. Your Suburban can take 2,500 pounds in tow, all you add is a trailer hitch. With our optional trailer-towing package, you can take 5,000 pounds. For more information

about this package, ask for our Trailer-Towing catalog. **B.** The Fury power tailgate window is standard. Coming through with extra convenience. **C.** Now you can see exactly what's going on. And with our standard floodlit instrument panel, you see it in style. **D.** Our

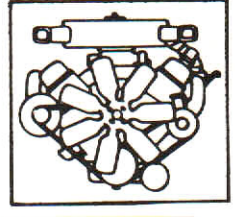
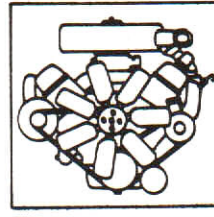
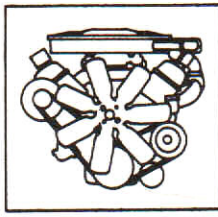
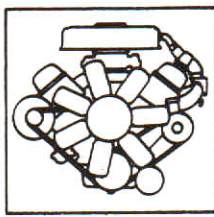
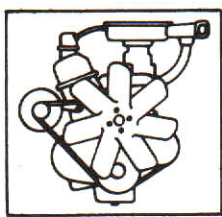
optional headlamp washer with exclusive super-scrub brushes. Available on Sport Suburban. **E.** Optional dual air conditioning. A Chrysler Corporation exclusive. Four extra vents help cool the wagon, from the instrument panel to the tailgate. **F.** Our optional

Brougham split bench comfort seat. The ultimate in all-vinyl seating. With center armrests and passenger side recliner. Also available in cloth-and-vinyl. **G.** Storage trays for all those little goodies. And optional cargo area carpeting throughout. **H. & I.** The Brougham insig-

nia. A statement of your good taste. **J.** All-vinyl comfort center, with a pull-down armrest. In any of four colors. Standard on the Sport Suburban. **K.** Upholstered in vinyl for easy care. The standard seat on your Custom Suburban is available in four colors. **L.** All-

vinyl comfort in any of four colors when you choose the three-seat Suburban. **M.** The two-seat Suburban features three interior color selections. With the comfortable, and easy cleaning advantages of vinyl.





Displacement	Carb.	Horsepower Rating		Comp. Ratio	Air Cleaner	Exhaust System	Satellite	Satellite Custom	Satellite Regent	Suburban	Custom Suburban	Sport Suburban
		Gross	Net*									
225 "6"	1-bbl.	145	110	8.4 to 1	Single Snorkel	Single	Std.	Std.	—	—	—	—
318 V-8	2-bbl.	230	155	8.6 to 1	Single Snorkel	Single	Std.	Std.	Std.	Std.	Std.	Std.
360 V-8	2-bbl.	255	175	8.7 to 1	Single Snorkle	Single	—	—	—	Opt.	Opt.	Opt.
383 V-8	2-bbl.	275	190	8.5 to 1	Single Snorkel	Single	Opt.	Opt.	Opt.	Opt.	Opt.	Opt.
383 V-8	4-bbl.	300	250	8.5 to 1	Single Snorkel	Dual†	Opt.	Opt.	Opt.	Opt.	Opt.	Opt.
440 V-8	4-bbl.	335	220	8.8 to 1	Dual Snorkel	Single	—	—	—	Opt.	Opt.	Opt.

\*Installed

†Single on Suburban wagons

### 1971 Station Wagon Options

Options	Sub.	Custom Sub.	Sport Sub.	Satel- lite	Satellite	
					Custom	Regent
Air Conditioning	○	○	○	○	○	○
Air Cond.—Dual	○	○	○	NA	NA	NA
Assist Handles	○	○	○	NA	NA	NA
Astro Bench Seat	NA	○	S	NA	NA	○
†Auto Speed Control	○	○	○	○	○	○
Alternator—50 Amp	○	○	○	○	○	○
Battery—70 Amp	○	○	○	○	○	○
Bumper Guards—Front	○	○	○	○	○	○
Bumper Step Pad—Rear	○	○	○	NA	NA	NA
Clock	○	○	○	○	○	○
Sure-Grip Differential	○	○	○	○	○	○
Light Package	○	○	○	○	○	○
Driver Aid Package	Included in Light Package on Fury Wagons			○	○	○
Disc Brakes—Front (Power Required)	○	○	○	○	○	○
Power Brakes (Power Disc on Fury)	○	○	○	○	○	○
Strato-Ventilation	○	○	○	○	○	○
Inside Hood Release	NA	NA	NA	○	○	○
Air Deflector	S	S	S	○	○	○
Luggage Rack	○	○	○	○	○	○
Auto-Lock	NA	NA	NA	○	○	○
Manual Mirror (Right)	○	○	NA	○	○	○
Mirror—Remote Control (Left)	○	○	○	○	○	○
Power Bench	○	○	○	NA	NA	NA
Power Seat (Left)	NA	○	○	NA	NA	NA
Power Steering	○	○	○	○	○	○
Power Windows	○	○	○	○	○	○
Power Tailgate Window	S	S	S	○	○	○
AM Radio	○	○	○	○	○	○
AM/FM Stereo Radio	○	○	○	○	○	○

†Available only with V-8, automatic transmission and power brakes

Options	Sub.	Custom Sub.	Sport Sub.	Satel- lite	Satellite	
					Custom	Regent
AM Radio	○	○	○	○	○	○
w/Stereo Cassette	○	○	○	○	○	○
AM/FM Stereo Radio w/Stereo Cassette	○	○	○	○	○	○
Rear Speaker	○	○	○	○	○	○
Microphone	○	○	○	○	○	○
Cassette Tape Player w/Radio only	○	○	○	○	○	○
Heavy Duty Shocks	○	○	○	○	○	○
Tinted Glass	○	○	○	○	○	○
Strg. Whl.—Tilt & Rim-Blow	○	○	○	○	○	○
Storage Compartment Lock	○	○	○	○	○	○
Washer—T/Gate Window	○	○	○	NA	NA	NA
Deluxe Wheel Covers (Set of four)	○	○	○	○	○	S
Wire Wheel Covers (Set of four)	○	○	○	○	○	○
Rallye Road Wheels (Set of four)	NA	NA	NA	○	○	○
Chrome-style Road Wheels (Set of four)	NA	NA	NA	○	○	○
Windshield Wipers (Variable Speed)	NA	NA	NA	○	○	○
Windshield Wipers (3-Speed w/coord. washers)	○	○	○	NA	NA	NA
Heavy-Duty Suspension Pkg.	○	○	○	○	○	○
Trailer-Towing Package	○	○	○	○	○	○
Shoulder Belts—Rear	○	○	○	○	○	○
Brougham Package	NA	○	○	NA	NA	NA
Carpeted Cargo Area	○	○	○	NA	NA	NA
Headlight Washer	NA	NA	○	○	○	○
Undercoating	○	○	○	○	○	○
Power Door Locks	○	○	○	NA	NA	NA

○—Optional S—Standard NA—Not Available

**COLORS.** The key is to color-key. Check salesman to see how you can match protective vinyl side moldings on some models.

Slate Gray Metallic*	Glacial Blue Metallic	Evening Blue Metallic	Winchester Gray Metallic†	True Blue Metallic†	Mood Indigo Metallic*	Burnished Red Metallic*	Amber Sherwood Metallic
Sherwood Green Metallic	April Green Metallic*	Autumn Bronze Metallic	In-Violet Metallic†	Sassy Grass Green†	Sandalwood Beige*	Coral Turquoise Metallic*	Tahitian Walnut Metallic*
Tor-Red#	Spinnaker White*	Formal Black	Bahama Yellow†	Tunisian Tan Metallic†	Curious Yellow#	Gold Leaf Metallic	Tawny Gold Metallic

\*Fury only. †Satellite only. #Optional at extra cost.

# Options

**1. Power Disc Brakes.** The advantages of fade-resistant, sure stops. **2. Strato-Vent Fresh Air System.** Keeps fresh air flowing. Front vents can be blower operated. **3. Assist Handles.** An extra touch that makes life a little easier in Fury wagons. **4. Light Package.** Helps show you the way. With fender-mounted turn signals, cargo area light, ignition switch

light with time-delay, rear-door courtesy lights and more. **5. Door Lock Reminder and Low Fuel Warning Lights.** For safety and convenience. (Part of Light Package on Fury wagons, and Drivers Aid Group on Satellite wagons.) **6. Luggage Rack.** Carry it off with style. **7. AM Radio.** You will have music wherever you go. **8. Inside Hood Release.** When the car is locked,

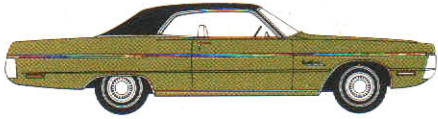
the hood stays locked. Satellite only. **9. Chrysler Airtemp Air Conditioning.** Cleans, dehumidifies and cools the air quietly and efficiently. With dual system, optional on Fury, you get a special rear unit with four more vents. **10. Auto-Speed Control.** Set and forget. Touch the brake pedal and it disengages.



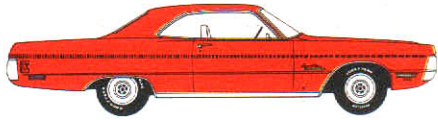


# 1971 Plymouths

## FURY



Sport Fury (4-door sedan and hardtop, 2-door hardtop and formal hardtop—V-8)



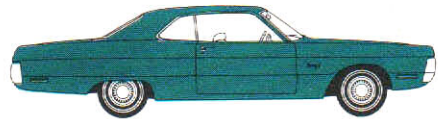
Sport Fury GT (2-door hardtop—V-8)



Fury III (2-door formal hardtop, 4-door hardtop—V-8; 4-door sedan and 2-door hardtop—V-8 or Six)



Fury II (2-door hardtop and 4-door sedan—V-8 or Six)



Fury I (2-door coupe and 4-door sedan—V-8 or Six)

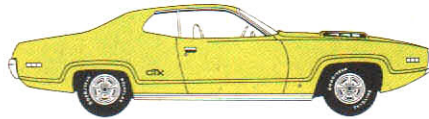


Fury Wagons (Sport Suburban 2- and 3-seat models—V-8) (Custom Suburban 2- and 3-seat models—V-8) (Suburban 2- and 3-seat models—V-8)

## SATELLITE



Satellite Sebring (Sebring-Plus 2-door hardtop—V-8) (Sebring 2-door hardtop—V-8 or Six)



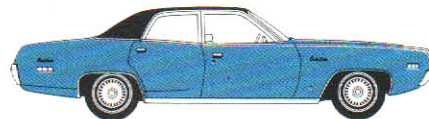
GTX (2-door hardtop—V-8)



Road Runner (2-door hardtop—V-8)



Satellite (2-door coupe—V-8 or Six)

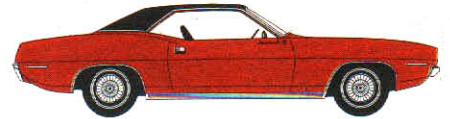


Satellite Brougham (4-door sedan—V-8) (Satellite Custom 4-door sedan—V-8 or Six) (Satellite 4-door sedan—V-8 or Six)



Satellite Wagons (Satellite Regent 2- and 3-seat models—V-8) (Satellite Custom 2- and 3-seat models—V-8 or Six) (Satellite 2-seat—V-8 or Six)

## BARRACUDA



Barracuda Gran Coupe (2-door hardtop—V-8)

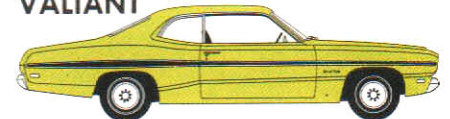


Barracuda (convertible, 2-door hardtop—V-8 or Six) (Barracuda 2-door coupe—V-8 or Six)



'Cuda (convertible, 2-door hardtop—V-8)

## VALIANT



Duster (2-door coupe—V-8 or Six) (Duster 340 2-door coupe—V-8)



Scamp (2-door hardtop—V-8 or Six)



Valiant (4-door sedan—V-8 or Six)

All product illustrations and specifications are based on authorized information. Although descriptions are believed correct at publication approval, accuracy cannot be guaranteed. Some of the equipment shown on product illustrations is optional, at extra cost. Chrysler Motors Corporation reserves the right to make changes from time to time, without notice or obligation, in prices, specifications, colors and materials, and to change or discontinue models. Specifications and product descriptions apply to North American-built vehicles only.



Keep your Plymouth coming through in top condition. Service it with men who know it best. See your Plymouth Dealer.

**Plymouth**

