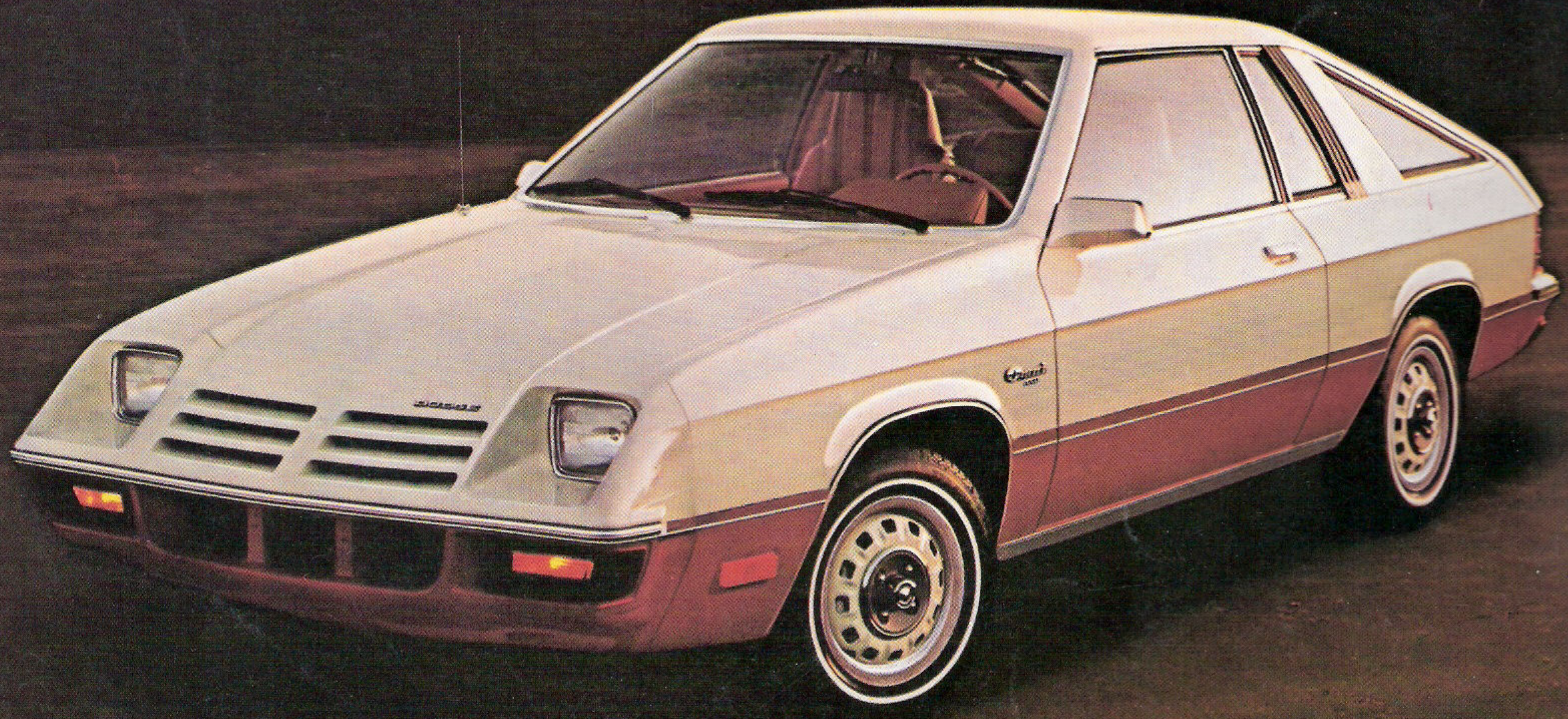


DODGE '79

OMNI

A NEW
OMNI O24
TO DO
IT ALL.





Optional Premium all-vinyl bucket seats.

The celebration continues outside. Bright body moldings. Pinstripes. Soft durable front-end panel. Wheel trim rings. And fiberglass radial-ply whitewall tires. They're all there on the Omni 024. And you didn't even have to ask.

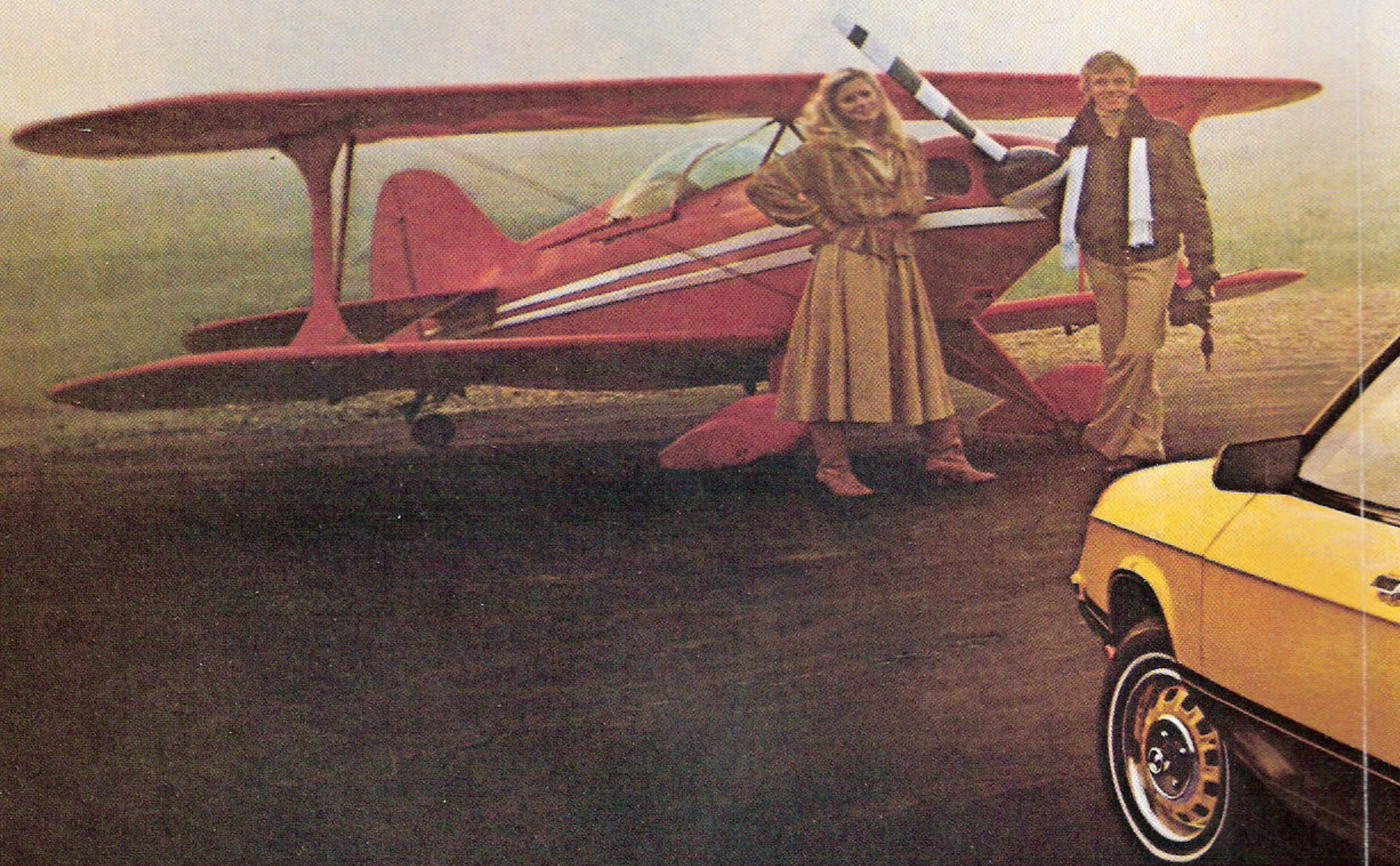
Something else that will do wonders for your spirits is the way you can deck out the 024 to your own very personal

preference. Select from an appealing choice of exterior and interior packages. Then pick your options. Removable glass sun roof. Luggage rack. Rallye road wheels. Cloth-and-vinyl bucket seats. Color-keyed seat belts and accessory floor mats. Sport steering wheel. Cargo compartment carpet and sound insulation. Sport suspension.

What more can be said of the 024? Well, should anyone forget, the 024 is an Omni. And that says this new little number can do a lot of things and do all of them well. Like carry things. And park easily. That is, if you would ever want to touch down in your 024.



Front-wheel drive





Optional Premium all-vinyl bucket seats. Sport Two-Tone Paint Package



Omni 024 with Sport Package

Omni 024. A Celebration of the Spirit.

Spirit.

It's a feeling you have about the hometown. And the home team.

It's what you feel on the first day of spring. And the last day of the old year.

It's being home for the holidays. Or away for the weekend.

It's being in love.

It's being alive.

It's 79 in the sun.

It's 024 in an Omni.

Omni 024. It's more than a new number. It's the newest of the new. Another Omni to do it all. A 2+2 hatchback with

more things going for it than a summer's day. Or at least as many.

Omni 024. Once you've experienced its spirit, you'll want to start the celebration.

Flights of Fancy

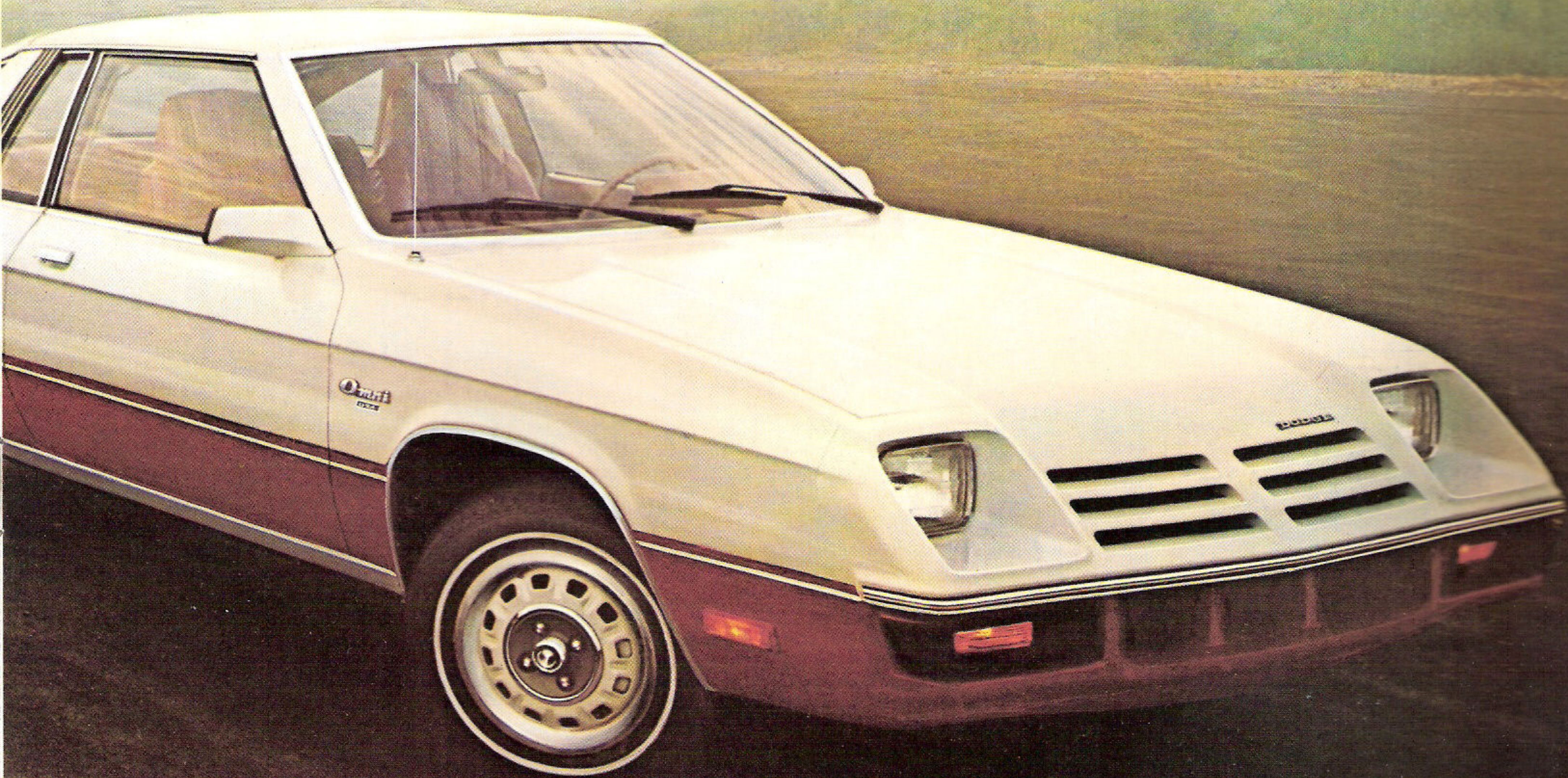
From its air-sleek front to the sweeping expanse of glass on its hatchback, it's clear that the Omni 024 is no ordinary car. To take flight in the 024 is to reinforce that notion. A 1.7-litre overhead-cam engine, front-wheel drive, and topflight ride and handling characteristics make the "getting there" a going concern.

The Omni 024 was born to move you in other ways.

Interior accommodation.

Strictly "first cabin." Custom all-vinyl front bucket seats and rear bench seat with fold-down seat-back. Custom door trim panels. Color-keyed carpeting in passenger and cargo areas. Cloth-covered headliner. Deluxe, deep-dish steering wheel. Woodtone instrument panel applique. AM/FM radio. Rear window defroster. And an electric remote liftgate release. All standard.

Some items pictured on vehicles on this and other pages of this catalog are extra-cost options



Omni 024 with Sport Two-Tone Paint Package

The Spirit is willing. And able.

Do you get the feeling the Omni 024 should be poised at the end of a runway? Ready for takeoff. It's understandable. But the fact is, the surface really doesn't matter.

The 024's front-wheel drive sees to that. Rain or snow, the bite is there. So's the precision you get from the rack-and-

pinion steering. And the stopping power from the 024's front disc/rear drum brake system. Suspension? Independent all around. A little like your thinking.

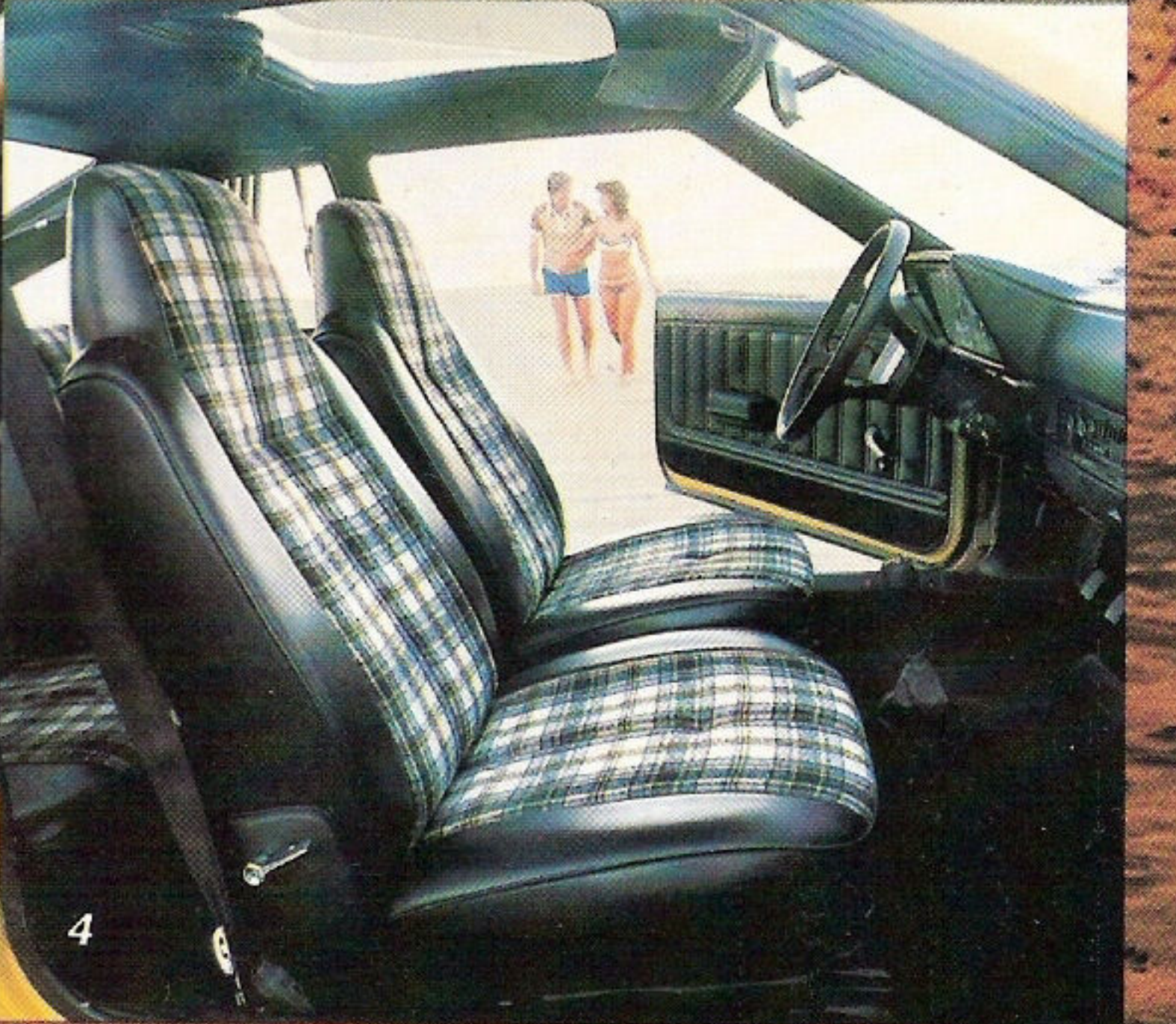
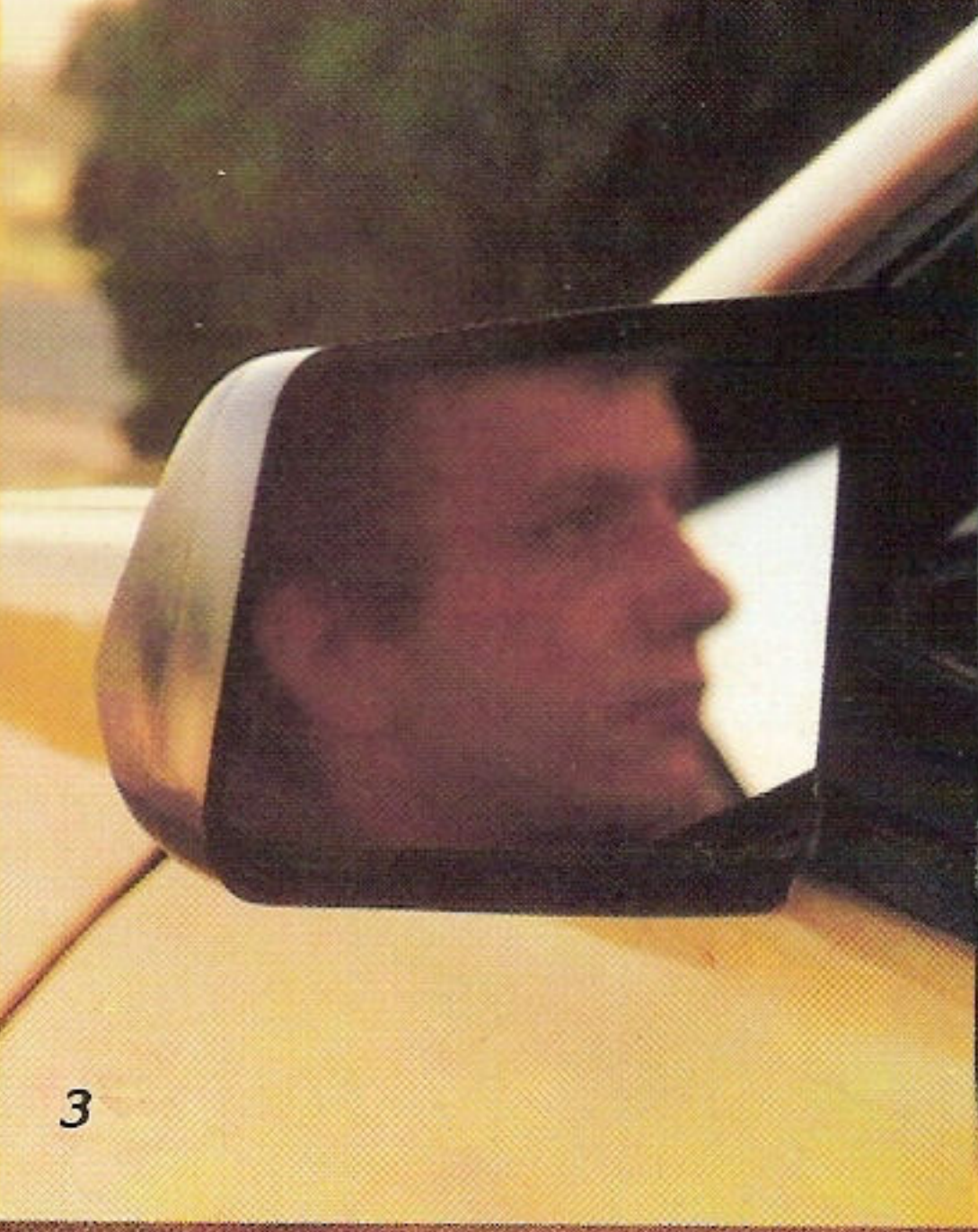
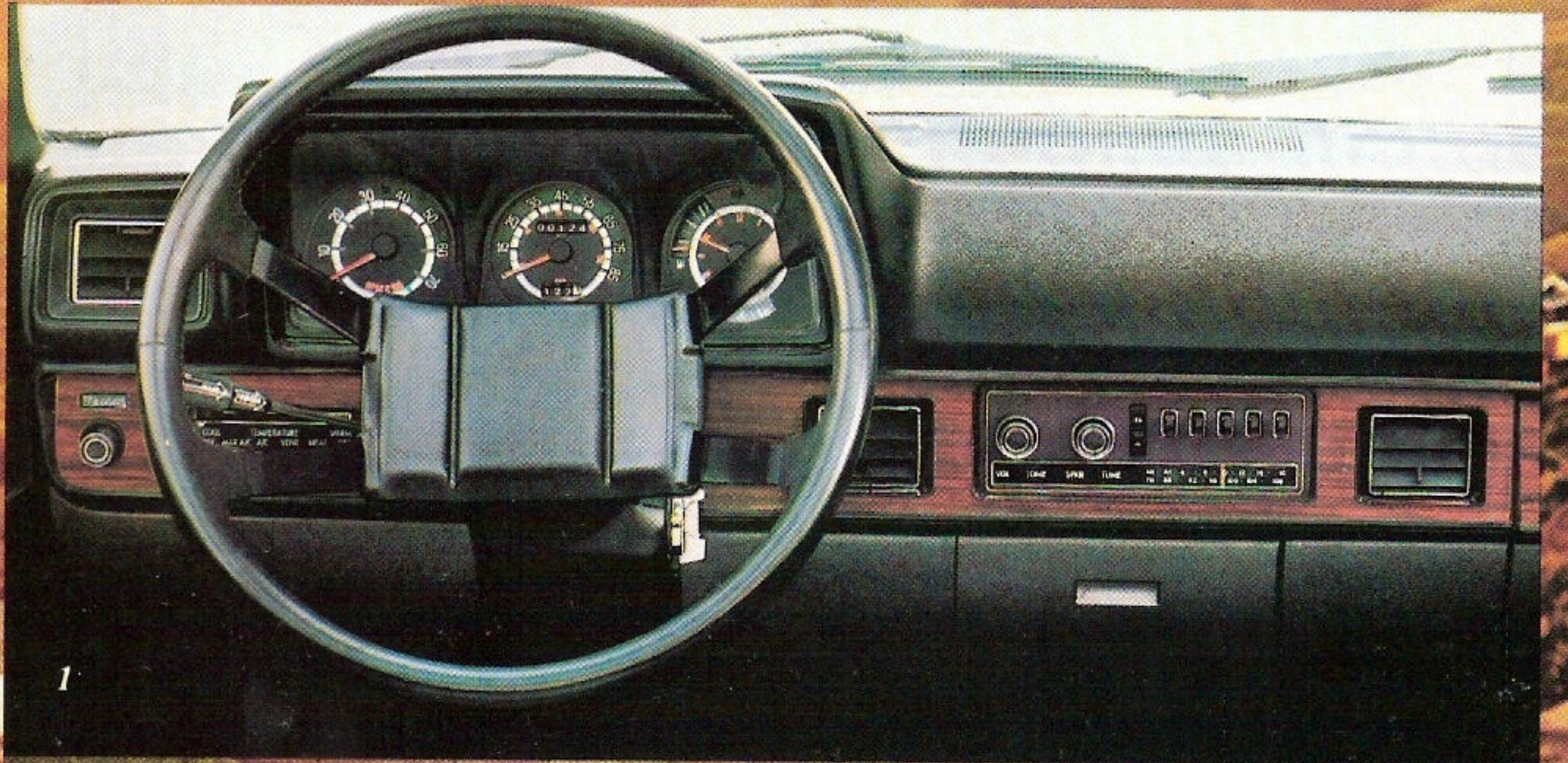
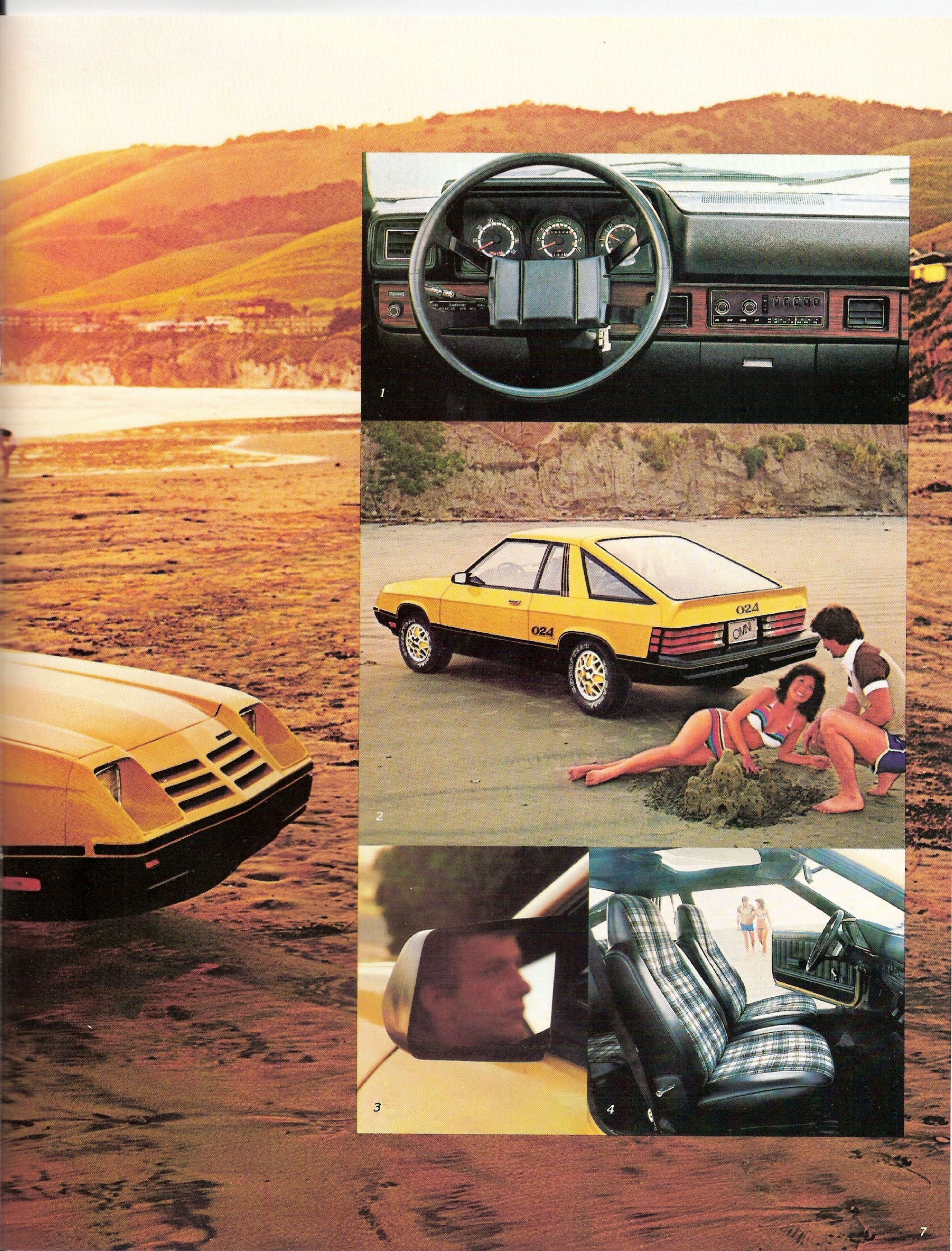
Ready to lift off in your 2+2? If you've got a lot of gear, lower the back seat and put it there. Now climb behind the

wheel and let the Omni 024 spirit you away from it all.

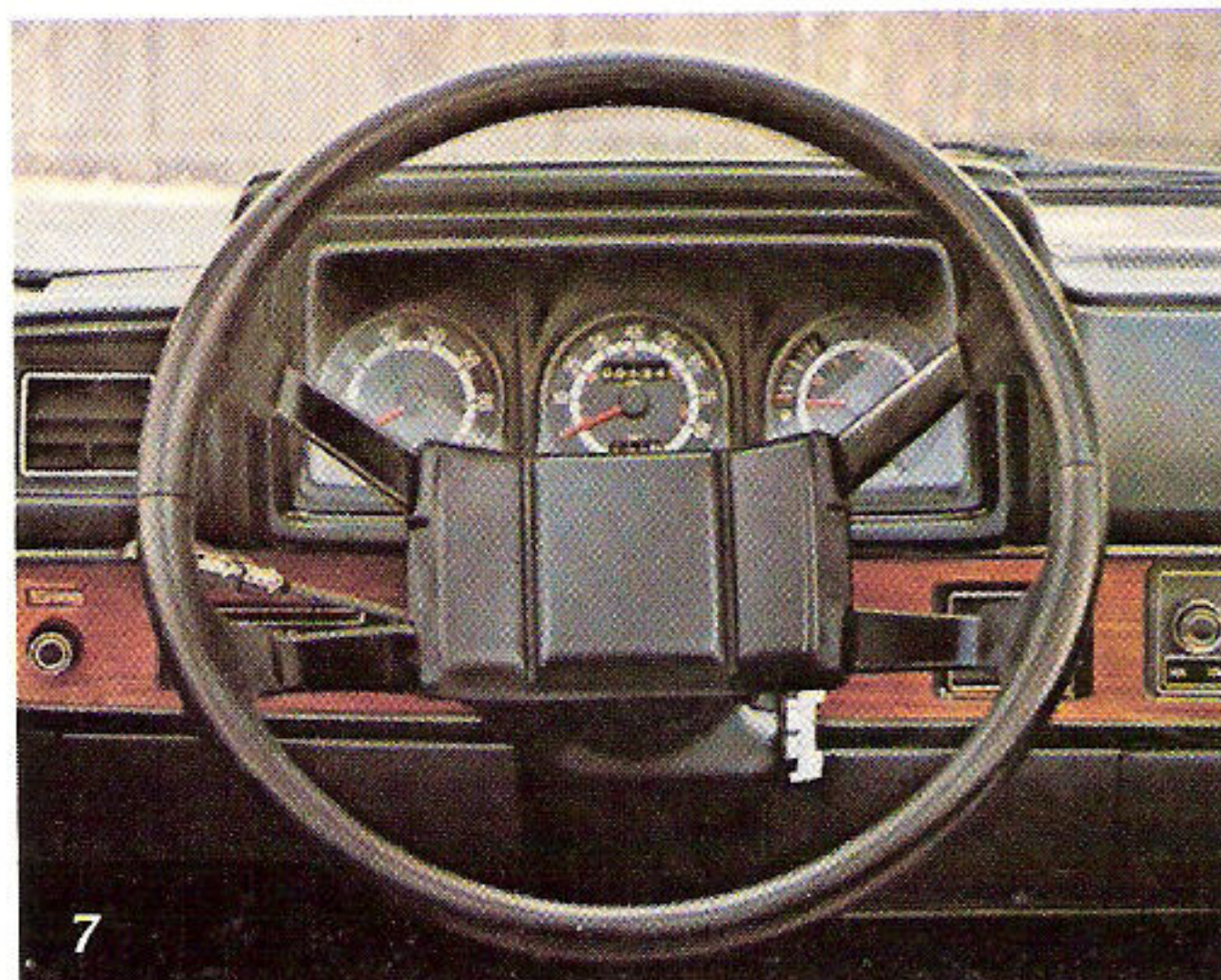
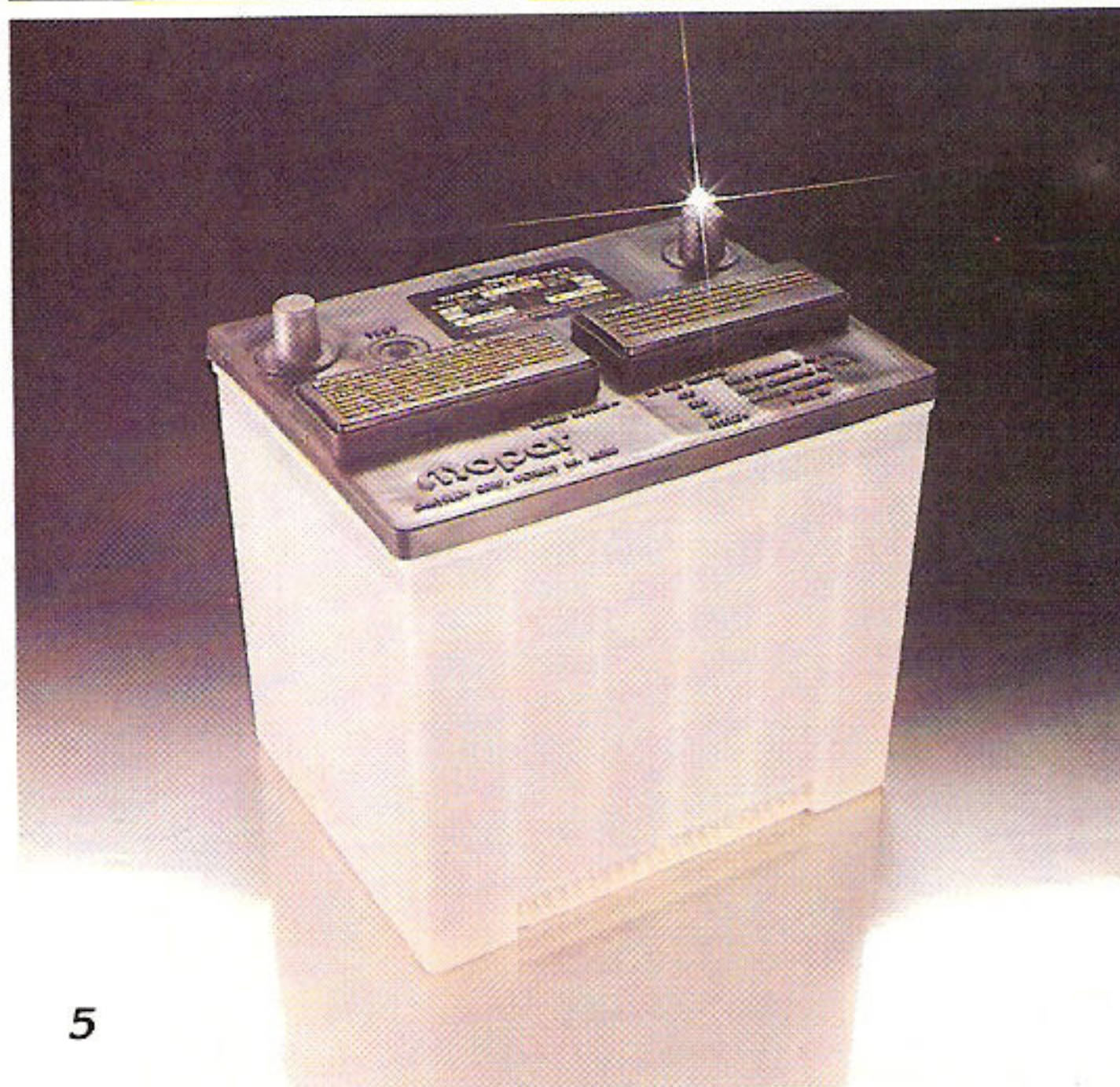
1. Rallye instrument cluster with tachometer, clock and trip odometer (optional).
2. Omni 024 with Sport Package.
3. Standard left-side sport mirror.
4. Optional plaid cloth-and-vinyl bucket seats.



Omni 024 with Sport Package.



Omni 024 Options



Selected Optional Packages

Premium Exterior Package

- Bright side window moldings and weatherstrip retainers*
- Louvered quarter window applique*
- Black and bright bumper rub strips
- Deluxe wheel covers

Sport Two-Tone Paint Packages

- 3 exciting color combinations (light upper/dark lower) with tape accent
- Eggshell White/Chianti Red
 - Light Cashmere/Sable Tan
 - Sunfire Metallic
 - Cadet Blue Metallic/Nightwatch Blue
 - Louvered quarter window applique*, bright side window moldings and weatherstrip retainers*, front and rear bright and black rub strips

024 Sport Package

- Black paint accent stripe with reflective red accents at taillamp area and paint-break demarcation stripe with lower body-side black paint treatment (delete drip trough molding)
- Louvered quarter window applique*
- Black bumper rub strips
- Black backlight molding*
- Black quarter window moldings*
- Black belt moldings*
- Black taillamp accents*
- Black and bright door handles*
- Black windshield moldings*
- Black dual remote sport style aerodynamic mirrors*
- Black four-spoke sport steering wheel
- Rallye instrument cluster with tachometer, clock and trip odometer
- Body-color wheels with bright trim rings, hub covers and lug nuts available in 5 body colors plus argent with some exteriors
- Rear air spoiler
- Large 024 decals* on rear quarter panels in front of the rear wheel opening and on spoiler*

Premium Interior Package

- Color-keyed shift lever console with rear ash receiver and wood-tone
- Passenger visor vanity mirror with cover
- Premium door trim panels with carpet, soft uppers and premium front armrests with integral pull handles
- Premium vinyl bucket seats with adjustable head restraints and passenger-side recliner

Light Package*

- Map/courtesy light
- Glove box light
- Ash receiver light
- Luggage compartment light
- Ignition light with time delay
- Headlights-on buzzer

Popular Equipment Group

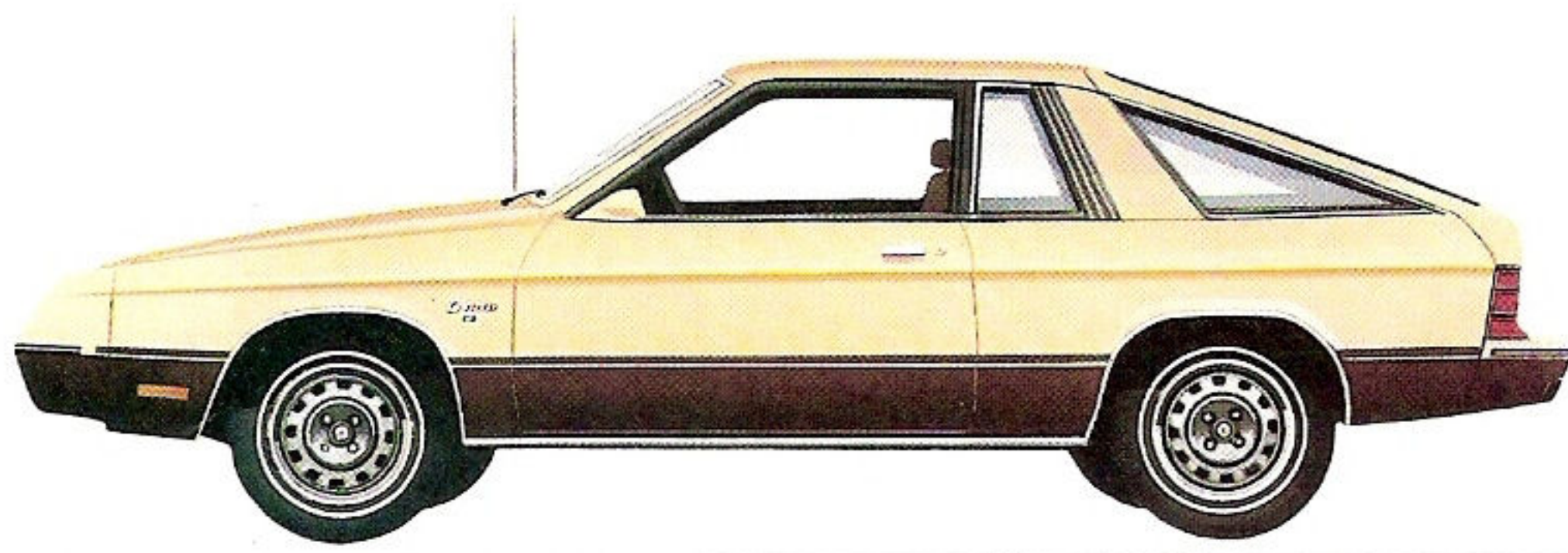
- Light Package
- Dual horns
- Power steering
- Dual sport styled aerodynamic outside remote mirrors
- Day/night inside rearview mirror

Rallye Equipment Group

- Rear deck spoiler
- Body-color wheels with bright hubs, nuts and trim rings available in 5 body colors plus argent with some exteriors
- 185/70 R13" OWL Aramid-belted radial-ply tires
- Sport suspension with heavy-duty springs, shock absorbers, larger front sway bar and additional rear sway bar
- Large Omni 024 rear quarter panel name decals in front of the rear wheel openings
- Rallye instrument cluster with tachometer, clock and trip odometer
- Four-spoke sport steering wheel

*Available in package only

Omni 024 Ready-To-Order Form



(Refer to page 8)

- Std. Omni 024
- Omni with Premium Exterior Package
- Sport Two-Tone Paint Package
- 024 Sport Package

Engines

- 104.7 CID (1.7 L) 2-bbl. 4-cylinder (standard)
- 104.7 CID (1.7 L) 2-bbl. 4-cylinder (in California with required Emissions Control System and Testing)

Transmissions

- 4-speed manual, fully synchronized (standard)
- Automatic (optional)

Interior Packages (refer to page 8)

- Premium Interior Package

Other Packages (refer to page 8)

- Light Package
- Popular Equipment Group
- Rallye Equipment Group

As you can see, on the opposite page, your Omni 024 offers you optimum choice of options . . .

- | | | |
|---|--|--|
| 1. Convenient tonneau cover | 3. Tri-Lite tilt-up removable glass roof panel | 6. Cast aluminum road wheels |
| 2. Multipurpose carry-all roof rack can be adapted for carrying skis, bikes or baggage. | 4. TorqueFlite automatic transmission | 7. Rallye instrument cluster with tachometer, clock, trip odometer, sport steering wheel |
| | 5. Maintenance-Free 430-amp. battery | 8. AM/FM stereo radio |

The Complete List of Options

- Air Conditioning
- Battery—430 amp. Maintenance-Free
- Bumper Protection Protective Rub Strips, Front and Rear
- Cargo Compartment Dress-Up and Sound Package
- Clock and Trip Odometer (not available with optional Rallye instrument cluster)
- Color-Keyed Seat Belts with Automatic Tension Reliever Release

Consoles

- Front Storage Module
- Shift Lever Console (includes auxiliary storage and rear ashtray)
- Cover, Tonneau—(roll-up rear compartment cover)
- Emissions Control and Testing—Required on all vehicles registered in California
- Flip-Out Quarter Window (not available with Paint Packages, Sport Package and Premium Exterior Package)
- Gas Cap, Locking

Glass

- Tinted Glass—All windows (recommended with optional air conditioning)
- Tinted Glass—Windshield
- Clear Glass—All windows (use with optional air conditioning if optional tinted glass not desired)

- Horns, Dual (included in Popular Equipment Group)
- Rallye Instrument Cluster with Tachometer, Clock and Trip Odometer (included in Sport Package and Rallye Equipment Group)
- Luggage Rack, Roof
- Mats—Accessory floor—color-keyed (front mats have carpeted inserts)

Mirrors

- Day/Nite Inside (included in Popular Equipment Group)
- Dual Sport Aerodynamic Outside Remote, Left and Right—Color-keyed, available in 5 body colors plus black with some exteriors, black with Sport Package

Moldings & Stripes

- Black Vinyl Body Side (K5) (not available with Paint Packages, Sport Package and Premium Exterior Package)
- Door-Edge Protectors—2

Power Assists

- Power Steering (included in Popular Equipment Group)
- Power Disc Brakes—Front

Radios

- Radio AM/FM Stereo (includes speakers in left and right front door and rear seat quarter trim panels)
- Rear-Seat Speaker—Single (not available with AM/FM stereo)

- Sport Steering Wheel (included in Sport Package and Rallye Equipment Group)
- Spoiler—Rear aerodynamic (included in Sport Package and Rallye Equipment Group)
- Sport Suspension with HD Front and Rear Sway-Bars (includes heavy-duty front and rear springs and heavy-duty front and rear shock absorbers) (included in Rallye Equipment Group)
- Sun Roof—Glass (removable glass)
- P165/75R13" (steel-belted radial) WSW
- P175/75R13" (steel-belted radial) WSW
- P185/70R13" (Aramid-belted radial) OWL
- Transmission—Automatic
- Undercoating

Wheel Dress-Up

- Cast Aluminum Road Wheels (includes color accents with Flame Orange or Bright Yellow. All others, argent)
- Wheel Covers—Deluxe (not available with Sport or Paint Packages)
- Bright Rallye Hubs with Bright Lug Nuts and Argent-Colored Wheels
- Body-Colored Rallye Wheels (includes bright hub lug nuts and trim rings) (available in 5 body colors plus argent with some exteriors)

Standard Equipment

Alternator—65 ampere • Battery—310 ampere
 • Brakes—front . . . self-adjusting manual disc
 • Brakes—rear . . . drum • Cigarette lighter
 • Directional signals with lane-change feature
 • Defroster, electric rear window • Electronic ignition and voltage regulator • Engine—4-cylinder, overhead cam, transverse-mounted, with 104.7 cu. in. (1.7 litre) displacement • Flasher, hazard warning • Floor covering—cargo compartment and seat-back, color-keyed • Fuel tank—13 gallons
 • Glove box lock • Headliner, cloth covered
 • Hood release, inside • Instrument panel, woodtone trim • Instrumentation—alternator gauge, engine temperature warning light, fuel gauge, oil pressure warning light, parking brake warning light • Instrument panel safety padding (woodtone accents) • Lights—headlight switch and wiper switch lights, backup, dome light switch, driver's door and right front door, parking brake warning, side marker lights and reflectors, select lever quadrant (with optional automatic transmission) • Mirrors—inside rearview/non-prismatic • Mirrors—outside sport style aerodynamic left mirror • Power hatchback release • Radio—AM/FM • Seats—custom vinyl front buckets, rear bench • Sill molding • Wheel lip molding • Steering—rack-and-pinion with 33.4-foot turning diameter • Steering wheel, luxury—3-spoke • Storage compartment, carpet • Stripes, body side, dual pin • Suspension, front—Iso-Strut, independent • Suspension, rear—trailing arm, independent with integral anti-sway feature, front and rear • Tires—P165/75R13" WSW—fiberglass radial • Transmission—4-speed manual with floor shifter, synchronized in all forward gears • Unibelt restraint system • Wheel trim rings • Wheels, steel 13" • Windshield wipers and electric washers—black wiper arms, blades, pivot nuts, and washers.

Standard Safety Features

Unibelt restraint system • Hazard warning flasher • Turn signals with lane-change feature • Side marker lights and reflectors • Backup lights • Disc brakes • Dual braking system with warning lights • Dual throttle return springs • Circuit breakers for wipers and headlamps • Electric windshield wipers and washers • Energy-absorbing steering wheel • High-penetration-resistant windshield • Padded instrument panel, sun visors, and top on front seat-back • Double ball-joint-mounted rearview mirror with soft rim • Side door guard beams • Folding seat-back latches • Interlocking door latches • Dual hood latch system • Front-seat head restraints • Lock buttons override inside door release lever (except driver's door) • Fire-retardant interior trim materials • Left outside rearview mirror • Safety-rim wheels.

Dimensions

2 + 2 Hatchback

Wheelbase	96.7"
Overall length	172.7"
Overall width	66.0"
Overall height	51.4"
Track: front—	56.0"; rear—55.6"
Headroom: front—	37.5"; rear—34.7"
Legroom: front—	42.5"; rear—28.6"
Hiproom: front—	52.6"; rear—46.1"
Shoulder-room: front—	52.5"; rear—50.9"
Luggage Capacity (with optional tonneau cover)—	
with rear seat-back raised	10.7 cu. ft
Cargo Capacity—	
with rear seat-back folded	33.8 cu. ft

Standard Specifications

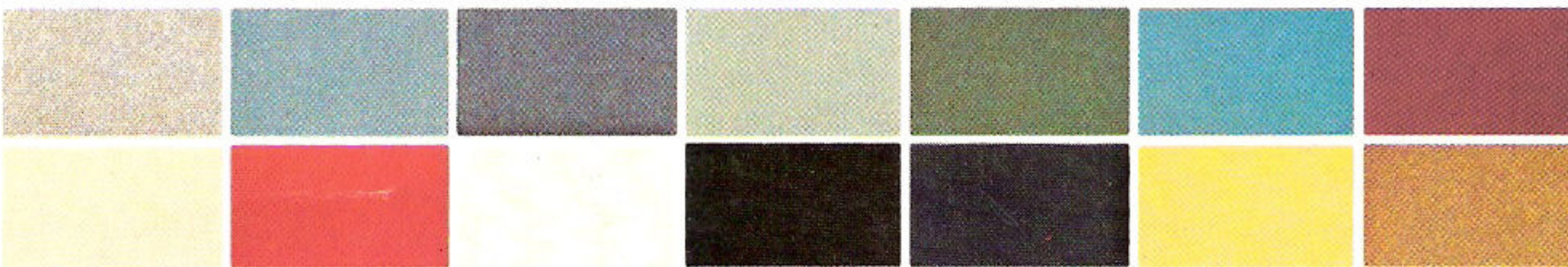
Engine	104.7 CID (1.7L) 2-bbl. 4-cylinder
Transmission	4-speed manual, fully synchronized
Suspension	Front: Iso-Strut independent with sway bar. Rear independent trailing arm with integral anti-sway feature
Brakes	Front, disc; Rear, drum
Electrical System	Battery, 310 amp; alternator, 65 amp; Electronic Ignition System
Fuel Tank	13 gallons

Engine and Drive Train Availability

Engine	Transmission (All states except California)	Std. Gear Ratio
104.7 CID (1.7L) 4-cylinder	4-speed manual floor shift TorqueFlite automatic (optional)	3.3 3.4 (3.6 optional)
California (N95 required*). Also available in states other than California		
104.7 (1.7L) 4-cylinder	4-speed manual floor shift TorqueFlite automatic (optional)	3.5 3.6

*Required Emissions Control System and Testing

Exterior Colors



Pewter Gray Metallic • Cadet Blue Metallic • Ensign Blue Metallic • Teal Frost Metallic • Teal Green Sunfire Metallic • Turquoise Metallic • Chianti Red • Light Cashmere • Flame Orange • Eggshell White • Black • Nightwatch Blue • Bright Yellow • Medium Cashmere Metallic

Two-Tone Paint Package

Cadet Blue Metallic/Nightwatch Blue • Light Cashmere/Sable Tan Sunfire Metallic • Eggshell White/Chianti Red

Sport Package

Pewter Gray Metallic/Flat Black • Flame Orange/Flat Black • Bright Yellow/Flat Black

*Due to occasional printing irregularities, the colors shown may vary slightly from actual hues. See your Dodge Dealer for accurate color chips.

All product illustrations and specifications are based on authorized information. Although all descriptions are believed correct at publication approval, accuracy cannot be guaranteed. Some of the equipment shown on product illustrations is optional at extra cost. Dodge reserves the right to make changes from time to time, without notice or obligation, in prices, specifications colors and materials, and to change or discontinue models.



Standard all-vinyl bucket seats



Standard Omni 024 hatchback model