

1979 FORD RANCHERO



Specifications Colors

DIMENSIONS:

Wheelbase	118.0"
Overall Length	220.1"
Height	54.4"
Box Length (at top)	74.8"
Box Width (at wheel wells)	48.9"

Brakes, power: self-adjusting front disc (10.7" diameter) and rear flared drum (11" x 2 1/4"), dual master cylinder hydraulic system, foot-operated parking brakes.

Electrical: DuraSpark solid state ignition, 40-amp. alternator, 41 amp-hr. battery.

Engines: choice of two Ford V-8's. The 5.0L (302) V-8 is standard in all Rancheros. The 5.8L (351) V-8 is optional.

	5.0 litre* (302 cu. in.) V-8 (2V)	5.8 litre (351 cu. in.) V-8 (2V)
Displacement	5.0 litre	5.8 litre
Bore & Stroke (in.)	4.0 x 3.0	4.0 x 3.5

*N.A. in Calif.

Fuel tank: 26-gallon at rear under box floor.

Steering, power: integral type.

Suspension, front: independent, short/long arm suspension with struts mounted on lower arms, ball joints, coil springs and shock absorbers.

Suspension, rear: four-link with coil springs, angle-mounted upper and lower control arms and shock absorbers.

Tires: Radial tires are standard, HR78-14B BSW (500 and Squire), RWL on Ranchero GT. Optional: Whitewalls or RWL.

Transmission: SelectShift Automatic.

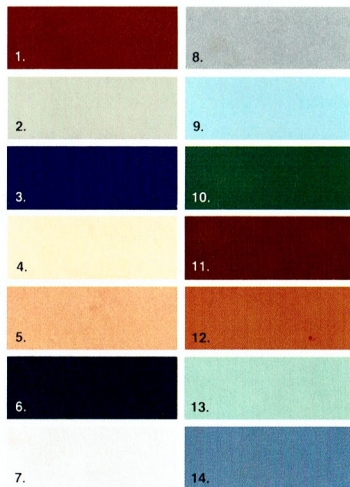
Wheels: 14 x 6.0".

Trailer towing.

Medium-duty (Class II up to 3,500 lb.) includes Heavy-Duty Handling Suspension Package (1250-lb. payload), Extra Cooling Package, 2.47 rear axle ratio, heavy-duty 60 amp. alternator, 77 amp. heavy-duty battery, external transmission oil cooler, and trailer wiring harness. Requires 5.8 litre V-8 engine.

1. Dark Red. 2. Dove Grey. 3. Midnight Blue Metallic. 4. Pastel Chamois. 5. Light Chamois. 6. Black. 7. Polar White. 8. Silver Metallic. 9. Light Medium Blue. 10. Dark Jade Metallic. 11. Dark Cordovan Metallic. Optional glamour colors: 12. Burnt Orange Glow. 13. Light Jade Glow. 14. Medium Blue Glow.

Tu-Tone option (Ranchero 500 only): accent color is applied on roof, hood and lower bodyside.



Specifications, descriptions and illustrative material contained herein were as accurate as known at the time this publication was approved for printing. Ford Division reserves the right to discontinue models or options at any time or change specifications, equipment or design without notice and without incurring obligation. All options and accessories illustrated or referred to as optional or available in this publication are at extra cost. Some options are required in combination with other options. For the price of the model with the equipment you desire or verification of specifications contained herein, see your Ford Dealer.

FORD RANCHERO

FORD DIVISION



Full-size comfort and luxury



Ranchero interiors

A wide, comfortable bench seat with attractive cloth/vinyl combination trim is standard in the Ranchero 500 and the Ranchero Squire (Ranchero GT has as standard the flight bench seat at lower left). The handsome interior also features wall-to-wall carpeting, vinyl door trim panels, and spare tire compartment cover. Durable, long-wearing all-vinyl seat trim (shown at left) is optional.



Brougham decor group

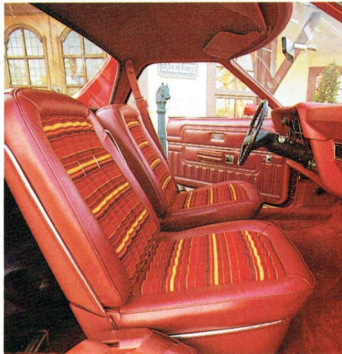
This luxurious interior is optional in all Rancheros, and includes deluxe cloth and vinyl split bench seats, Brougham door trim panels, and 18-oz. cut-pile carpeting. The split bench seats have individual armrests and the seats can be adjusted independently. Deluxe all-vinyl seat trim, illustrated at left, is a popular option with the Brougham Decor Group.

Flight bench seat

Ranchero GT has a cloth and vinyl flight bench seat with matching door trim panels and cut-pile carpeting. Rich all-vinyl trim is optional. The flight bench seat and trim is also available for the 500 and Squire.

Sporty bucket seats

Individual bucket seats with pleated cloth and vinyl trim are optional in all Rancheros. Included with the seats are matching door trim panels and cut-pile carpeting.



Interior colors

All Ranchero interiors come in Grey, Red, Blue, Jade, Chamois and Cordovan.

Ford Ranchero '79

Where comfort and capacity come full size.

Ford's Ranchero is designed for a full measure of enjoyment.

Owners take pride in its classic lines. The roadability of its wide 63-in. track. The luxurious driving room and ease. The choice of options from automatic temperature control to AM/FM multiplex with cassette player.

There's full capacity to do a job too. Tailgate down, you can carry 4' x 8' plywood flat. And, with trailer option, it is rated to tow up to 3,500 pounds.

Ranchero '79. Try it for size.

Ranchero GT

Here's the sporty new '79 Ford Ranchero GT with a long, sleek look that beckons you to take the wheel and see what driving is all about. Features and standard equipment include Sports Instrumentation Group with engine turned cluster applique, handsome GT stripe, dual sport mirrors, bright hub caps with trim rings, and Raised White Letter (RWL) radial tires. (Shown with optional bucket seats, magnum 500 wheels, radio and Bumper Protection Group.)



NOTE: Some illustrations include optional equipment. See the standard features for each model, the options page and the back cover.



Full-size cargo box

The cargo body, 6½-ft. long at the floor and 4-ft. wide, has double-wall construction. Low tailgate height and counterbalanced one-hand tailgate make loading easy.



Ranchero Squire

The elegant Ranchero Squire features simulated woodgrain paneling on sides and tailgate, and deluxe wheel covers. A wide variety of luxury options is also available. (Shown below with optional bright hub caps and trim rings, and RWL tires.)

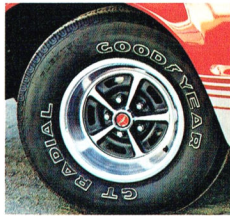
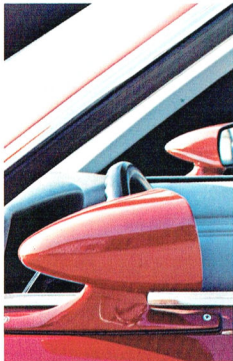


Ranchero 500

The standard model of the Ranchero lineup. Its good looks and luxury appointments make it an excellent value. Standard equipment includes V-8 engine, SelectShift Automatic, power steering and brakes, bright hub caps, and steel-belted radial tires. (Shown below with optional Tu-Tone, deluxe wheel covers, Bumper Protection Group and WSW tires.)

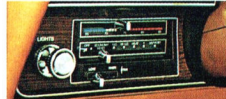


Options



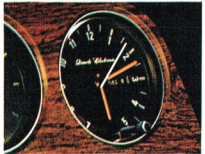
2. Wire wheel covers

3. Magnum 500 chrome wheels



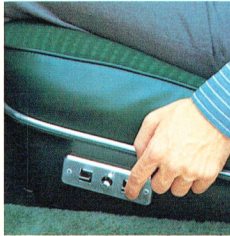
4. SelectAire Conditioner (manual or ATC)

5. AM/FM stereo with 8-track tape player



6. Day/date electric clock

7. Sports instrumentation group



8. Tilt steering wheel

9. Front cornering lamps

10. Six-way power seat

1. Dual sport mirrors, LH and RH remote controlled. Color-keyed.
2. Wire wheel covers add flare.
3. Magnum 500 chrome wheels (4) include 7-in. rims.
4. SelectAire Conditioner available with manual or automatic temperature control.
5. AM/FM stereo with 8-track tape. Other choices include AM/FM stereo with cassette tape player, AM/FM stereo with search feature, AM/FM stereo, AM/FM monaural, and AM radio.
6. Day/date electric clock with quartz controlled accuracy.

7. Sports Instrumentation Group includes woodtone applique around instrument cluster pods; tach, temperature and oil pressure gauges, trip odometer, ammeter, electric clock and luxury steering wheel.
8. Tilt steering wheel has five positions to choose from. Swings up for easy entry (Sport wheel shown).
9. Cornering lamps light up turns.
10. Six-way power flight bench or split bench seat.

Ford offers a wide choice of options to help make your driving easier . . . your Rancho better equipped for work or personal use. Many are illustrated, others are listed below.

Appearance

- Appearance Protection Group with door edge guards, floor mat and license plate frames.
- Deluxe wheel covers (for 500, included on Squire).
- Wheel trim rings (for 500 and Squire, included on GT).
- Vinyl roof in Black, White, Red, Blue and Cordovan (not available with Rancho GT or Tu-Tones).
- Wheel lip moldings (for GT, included on 500).

Comfort/Convenience

- Convenience Group: includes intermittent windshield wipers, automatic parking brake release, RH remote control mirror (dual racing mirrors standard on GT, LH standard on others), trip odometer, and passenger visor vanity mirror.
- Fingertip speed control.
- Illuminated entry system.
- Light Group: includes engine compartment, glove box and ashtray lights; plus "door ajar" warning light and "headlights on" warning buzzer.
- Power door windows.
- Tinted glass all around.

Performance

- Engine block heater.
- Heavy-duty handling suspension (1250-lb. maximum payload): includes heavy-duty rear springs, and rear stabilizer bar.
- Heavy-duty alternator, 90 amp.
- Heavy-duty battery, 77 amp-hr.
- Medium-Duty Trailer Towing Package (see back cover).
- Traction-Lok differential (N.A. in Calif.).

Protection

- Bumper Protection Group has front and rear bumper guards and front bumper rub strips.
- Bodyside protection molding with vinyl insert for Rancho 500 (N.A. with Tu-Tone).
- Lower bodyside protection (in addition to regular Ford corrosion protection measures) provides an application of vinyl along the lower sides to help protect against stone-pecking.

New Extended Service Plan

Ford Motor Company offers an Extended Service Plan. Ask your dealer for details.

NOTE: Options are not necessarily available in all series or models. Some options are required, or are not available in combination with other options. Ask your Ford Dealer.