

1984

CHRYSLER

Executive Sedan and Limousine





Chrysler Executive Sedan ...a unique blend of prestige and technology.

The ultimate in Chrysler luxury and elegance, the 1984 Chrysler Executive Sedan and its slightly larger counterpart, the Limousine, help give Chrysler the widest range of front-wheel drive luxury cars in the industry.

The Chrysler Executive Sedan offers a greater combination of luxurious interior appointments, riding stability and comfort, interior spaciousness, advanced technology, efficiency, and one of the highest levels of standard equipment available on a production car today. Along with these attributes, Executive Sedan and Limousine have three distinctively Chrysler advantages—Chrysler's 5/50 Protection Plan, fuel efficiency and value.

Chrysler is so confident of the quality of Executive Sedan and Limousine that they are covered by the Five-Year/50,000-Mile Protection Plan, a limited warranty on power train components, including engine, transaxle and axle—plus outer panel rust-through protection. Coverage is for five years or 50,000 miles, whichever comes first. A deductible applies. See a Chrysler dealer for details.

Chrysler's famed front-wheel drive technology

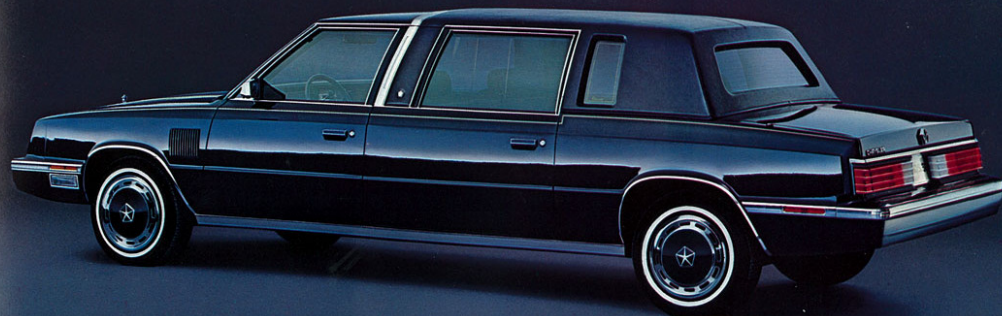


gives Executive Sedan spacious five-passenger interior room by reducing the drive shaft tunnel found in conventional sedans. Front-wheel drive also places the drive train weight over the front driving wheels for increased traction and stability. Another outstanding benefit of front-wheel drive is fuel efficiency. The 1984 Executive Sedan with its standard 2.6-liter Mitsubishi-built Silent Shaft four-cylinder engine coupled with a three-speed automatic transaxle has a fuel economy rating of 21 EPA EST MPG,* 29 estimated highway.



Inside, Executive Sedan shows what automotive luxury should be, with low-back pillow-style front bucket seats covered in luxurious velour cloth. The rear bench seat has the same pillow styling, with a center folding armrest and passenger assist straps conveniently located on each side. The rear of the front console contains outlets for air conditioning.

*Use EPA EST MPG numbers for comparison. Your mileage may differ depending upon speed, weather, and trip length. Actual highway mileage will probably be lower than highway estimate. California mileage: 20 EPA EST MPG, 27 estimated highway.



Chrysler Limousine ...a limousine like no other.

The 1984 Chrysler Limousine has all the distinctive characteristics of the Executive Sedan on a 131-inch wheelbase, seven inches longer than Executive Sedan. This additional length provides the Limousine with the capability to carry two additional passengers in jump seats that fold down from the back of the passenger compartment partition.

The Limousine shares all the attributes of the Executive Sedan, including warranty coverage, fuel efficiency and value. Like Executive Sedan, the 1984 Chrysler Limousine is built with extensive attention to quality control procedures. These include use of computer technology to check materials and components for quality before assembly, widespread use of robotics for stronger welds, and joint worker/management quality control teams who constantly look for ways to improve the assembly process.

This wide-ranging concern for quality enables Chrysler to back the Chrysler Limousine with the 5/50 Protection Plan, making it the only U.S.-built limousine covered by a five-year/50,000-mile limited warranty.

Fuel efficiency is another Limousine advantage, with a mileage rating of 21 EPA EST MPG,* 29 estimated highway, for the standard 2.6-liter



Mitsubishi-built Silent Shaft four-cylinder engine with three-speed automatic transaxle.

Value is present in the Chrysler Limousine in a number of forms. Structural assemblies and suspension have been strengthened to provide durability on a longer wheelbase, and also to provide a smooth, stable and silent ride.

The Limousine's long list of standard features matches that of the Executive Sedan, with several important Limousine features added. For instance, there are two standard radios—in front, an elec-



tronically tuned AM/FM stereo radio with integral digital clock; in the rear, an electronically tuned AM/FM stereo radio with integral digital clock and cassette player.

Other Limousine standard features include a power-operated sliding glass divider between the front low-back bucket seats and rear seating area.

*Use EPA EST MPG number for comparison. Your mileage may differ depending upon speed, weather, and trip length. Actual highway mileage probably will be lower than highway estimate. California mileage: 20 EPA EST MPG, 27 estimated highway.

Standard Features and Options

SPECIFICATIONS

	Executive Sedan	Limousine
Wheelbase	124.0"	131.0"
Overall Length	203.4"	210.4"
Overall Width	68.5"	68.5"
Overall Height	53.0"	53.0"
Track—Front	57.6"	57.6"
—Rear	57.2"	57.2"
Turning Diameter—Curb-to-Curb	41.2'	43.2'

STANDARD EQUIPMENT

	Executive Sedan	Limousine
Air Conditioning (includes bi-level ventilation features to improve the flow of cool, clean air for more even temperature and reduced cold drafts and special air handling ducts for rear seating)	S	S
Alternator—75-ampere	S	S
Ash Receivers—(1 front, 2 rear)	S	S
Automatic Speed Control	S	S
Battery—500-ampere maintenance free	S	S
Battery Test Indicator	S	S
Brake, Parking—Foot pedal operated	S	S
Brakes, Power—Dual diagonal: 10" ventilated rotor disc; self-adjusting rear 8.68" drum	S	S
Bumpers—Energy absorbing, color-keyed soft fascia—covered with bumper protective rub strip and bumper guards	S	S
Carpeting—Passenger compartment, color-keyed with special sound insulation	S	S
Carpeting—Trunk dress-up	S	S
Cigarette Lighter—Front (2) Rear	S	S
Cleaner Air System	S	S
Clock, Electronic Digital—(integral with radios)	S	S
Console, Front	S	S
Console, Rear Compartment with Cabinet	NA	S
Control Symbols International (ISO)	S	S
Coolant Overflow Reservoir	S	S
Corrosion Protection—Extensive use of galvanized steel	S	S
Defroster—Electric rear window	S	S
Divider—With power center sliding glass	NA	S
Drive, Front Wheel	S	S
Electronic Ignition and Voltage Regulator	S	S
Electronic Cluster Instrument Panel—With car graphics message center (cluster includes electronic speedometer and odometer and electronic oil, volt, fuel and temperature indicators)	S	S
Electronic Voice Alert System—Audibly announces key in ignition, fasten seat belts, door ajar, low washer fluid, parking brake on, low fuel, low engine oil pressure, engine overheating, electric system malfunction, all monitored systems functioning	S	S
Engine—2.6-liter overhead cam four-cylinder Silent Shaft MCA-JET, with hemispherical combustion chamber (built by Mitsubishi Motors Corporation)	S	S
Engine Cooling Fan—Electric	S	S
Flashers—Warning	S	S
Fuel Tank—14-gallon; with curbside fuel filler door	S	S
Glass—Tinted: all windows	S	S
Glove Box Lock	S	S
Grille—Vertical: upper/lower theme, with bright surround molding	S	S
Head Restraints—Adjustable (front/rear)	S	S
Headlamp Bezels—Bright	S	S
Headlamps—Halogen high/low beam: rectangular	S	S
Headliner—Cloth-covered: color-keyed	S	S
Heater and Defroster	S	S
Hood—Counterbalanced	S	S
Hood Ornament—Crystalline Pentastar	S	S
Hood Release—Inside	S	S
Horn—Optical: with "pass-flash" feature	S	S
Horns—Dual	S	S
Illuminated Entry System	S	S
Instrument Panel—Brushed finish cluster with dark woodtone treatment; padded top	S	S
Insulation—Body: sound	S	S
Insulation—Hood: pad	S	S
Latches—Door: shielded to minimize freezing	S	S
Lamps—Cornering	S	S
Lamps—Opera: electroluminescent	NA	S

INTERIOR DIMENSIONS

	Executive Sedan	Limousine
Head Room—Front	38.1"	38.1"
—Rear	37.2"	37.2"
Leg Room—Front	42.3"	42.3"
—Rear	40.2"	40.2"
Hip Room—Front	53.3"	53.3"
—Rear	54.3"	54.3"
Shoulder Room—Front	55.2"	55.2"
—Rear	57.7"	57.7"
Trunk Capacity*	14.0 cu ft	14.0 cu ft

*Estimated.

	Executive Sedan	Limousine
Lights—Ash receiver, backup, dome/reading, glove box, ignition switch (with time delay), parking brake warning, side marker with reflectors, front door courtesy light switches, front door interior dome light switches, rear door interior dome light switches, trunk, underhood, rear reading light in partition, two-stage intensity courtesy lamps	S	S
Mirrors—Outside dual power adjustable: chrome	S	S
Molding—Wheel opening: full	S	S
Moldings—Belt, lower deck lid, upper door frame, drip rail, sill, windshield: bright	S	S
Multifunction Steering Column Lever—Includes switch for deluxe windshield wiper/washer with adjustable intermittent delay; headlamp dimmer, automatic speed control, turn signals, and "optical horn" headlamp signal	S	S
Nameplate—Bright "Chrysler" on deck lid, left side; gold "Chrysler" script on quarter window glass	S	S
Power Antenna—Rear	NA	S
Power Deck Lid Release—Control in glove box	S	S
Power Door Locks	S	S
Power Door Locks—Independent front/rear operation	NA	S
Power Seat—Left: bucket	S	S
Power Steering—Rack-and-pinion	S	S
Power Windows	S	S
Power Windows—Independent front/rear operation	NA	S
Radio—AM/FM stereo, electronically tuned: with integral digital clock	S	S
Radio—AM/FM stereo, electronically tuned: with integral digital clock, and cassette tape player (rear compartment)	NA	S
Roof—Full: padded vinyl	S	NA
Roof—Landau: padded vinyl, with bright surround moldings	NA	S
Seats—Front: low-back bucket, with luxury cloth	S	S
Seats—Rear: pillowed, with center armrest	S	S
Seats—Rear-facing: jump	NA	S
Steering Column—Tilt	S	S
Steering Wheel—Luxury: leather-wrapped	S	S
Straps—Assist: rear and rear quarter	S	S
Stripes—Accent tape; body sides and hood	S	S
Suspension—Front: Iso-Strut with coil springs around the shock absorbers, linkless antisway bar; rear: flex arm beam axle with trailing link coil spring and premium shock absorbers	S	S
Taillamps—Wraparound with bright accents	S	S
Tire—Spare: high pressure, low mileage	S	S
Tire Tread Wear Indicators	S	S
Tires—P185/75R14 steel-belted radial white sidewall	S	S
Transaxle—Automatic: TorqueFlite three-speed	S	S
Vinyl Protection—Lower body	S	S
Wheel Covers—Deluxe: color-keyed	S	S
Windshield Wipers—Deluxe: with intermittent wipe	S	S

OPTIONS

Emissions—California Control and Testing (required at extra cost on all vehicles registered in California)	E	E
Radio—AM/FM stereo, electronically tuned: cassette player with Dolby* sound, six speakers, integral digital clock (for front passenger compartment)	E	E
Wheel Covers—Wire: 14-inch (four)	E	NA
Wheels—Road: aluminum	E	NA

S=Standard. E=Extra cost. NA=Not available.

*Dolby is a trademark of Dolby Laboratories.

OPTIONAL 5/50 SERVICE CONTRACT COVERAGE

Chrysler Corporation offers a 5/50 "Added Coverage" (in Florida "Added Value Plan") Service Contract which provides protection against rising service and parts costs for specified major repairs not included in the 5/50 Limited Warranty. Coverage starts on the specified components in the plan after your vehicle's "basic" 12-month/12,000-mile warranty expires on these components and continues for five years or 50,000 miles (whichever occurs first) from the vehicle's original warranty start date. A deductible applies.

The plan provides an allowance for alternate transportation and towing.

Ask your dealer for details.



STANDARD SAFETY FEATURES

- Safety-Rim wheels
- Combination lap/shoulder belts for the driver and right front passenger, and lap belts for all forward-facing passengers
- Seat belt reminder system
- Energy-absorbing steering column or steering wheel
- Dual braking system with separate brake fluid reservoirs in the master cylinder
- Brake fluid pressure loss warning light (also serves as indicator when parking brake is applied)
- Hazard-warning flasher system
- Turn signals with lane-change feature
- Backup lights
- Energy-absorbing instrument panel and sun visors
- Front seat head restraints
- Energy-absorbing front seatbacks
- Inside and outside rearview mirrors
- Side marker lights and reflectors
- Fade-resistant front disc brakes
- Electric windshield washers and wipers
- Ignition and steering column lock
- Anti-theft trunk lock
- Headlamp and wiper circuit breakers with automatic reset
- Key-left-in-ignition warning
- Non-override door locks (except driver's door)
- Side door beams
- Dual throttle return springs
- Interlocking

- door latches
- Recessed inside door release handles
- Rotary glove box latch
- Reinforced windshield header and roof
- Glare reduction measures for windshield wipers, instrument panel, and steering wheel
- Double ball-joint rearview mirror mount

CONSIDER LEASING FROM THE LEASING PROFESSIONALS

In these days of tight money and high interest rates more consumers are considering leasing as an alternative to buying. Leasing a new Chrysler Executive Sedan or Limousine usually eliminates large down payments and often results in lower monthly payments because you're paying only for that portion of the vehicle life under the leasing agreement.

Leasing could be right for you, and the more you learn about it the more likely you are to consider it seriously. If leasing sounds like a sensible solution to your transportation needs, talk it over with us—your leasing professionals.

All product illustrations and specifications are based on authorized information. Although descriptions are believed correct at publication approval, accuracy cannot be guaranteed. Chrysler Corporation reserves the right to make changes from time to time, without notice or obligation, in prices, specifications, colors and materials, and to change or discontinue models. See your dealer for the latest information.

MOPAR parts are engineered by Chrysler Corporation for use in your new Chrysler Executive Sedan or Limousine. When replacement is necessary, be sure to specify MOPAR parts. Used by professional mechanics all over the world.



A PRODUCT OF THE NEW CHRYSLER CORPORATION

Van Lee Motor Sales

Dodge - Chrysler - Plymouth - Trucks

Form No. 81-005-4013 8/83(150M) Litho in U.S.A.