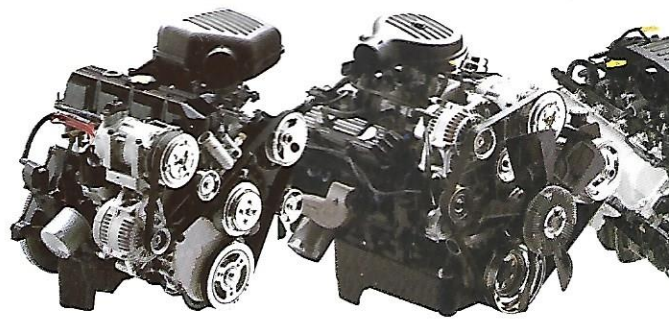


2001 Dakota





*2.5-Liter
Magnum® I-4*

*3.9-Liter
Magnum V6*

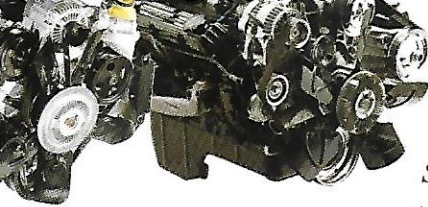
M

Diffoure



Dakota Quad Cab™





Liter
um V8

5.9-Liter
Magnum V8

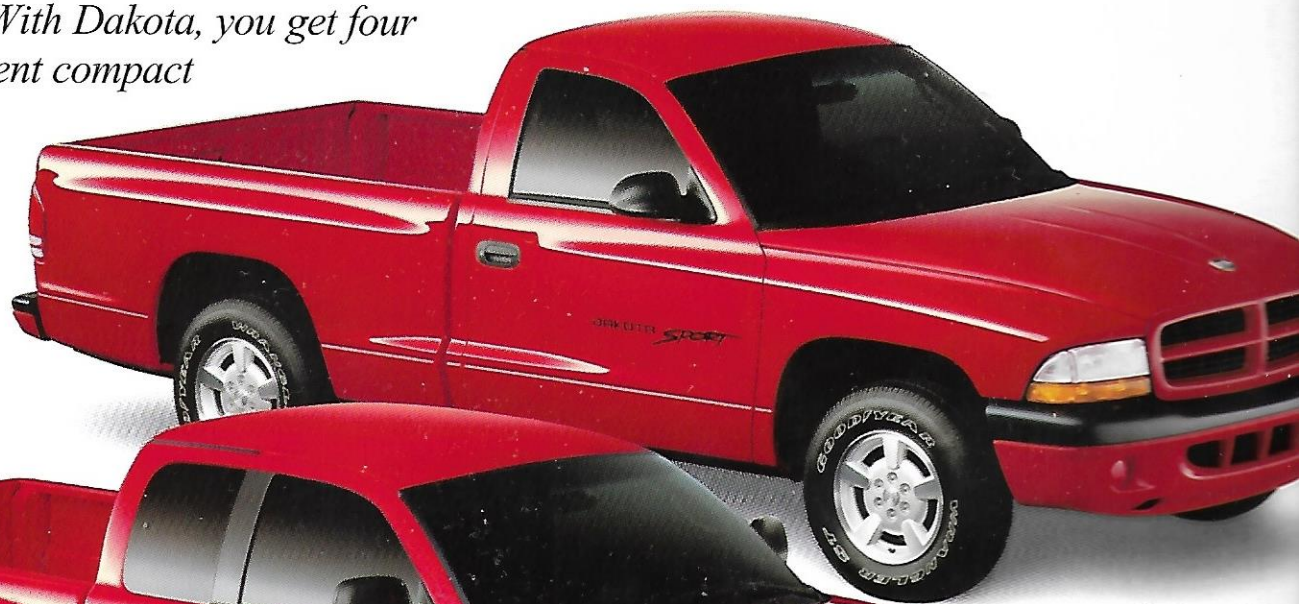
Four similarly different compact pickups. Numerous options, engine colors and configurations. One you. These are the figures in the Dodge Dakota equation. The answer to which is solved only when you are totally satisfied with the Dakota that's perfectly suited for you. Choose between

ent.

street-smart and sporty R/T, or a regular cab or Club Cab® model stuffed with standard features. Or perhaps you prefer the roominess and cargo capacity of the four-door Dakota Quad Cab.™ Your choice. And select from the widest choice of engines of all compact pickups — including the only two V-8 engines in this segment — both of which provide best-in-class power and performance. Also, consider the available classy new leather-trimmed seats in Dakota Quad Cab. There are so many possibilities, it seems



almost endless (and we haven't even discussed interior or exterior colors, choice of fabrics, or stereo systems). Add a new center console and redesigned ergonomic instrument panel — featuring a relocated and easily reachable four-wheel drive dial with available full-time four-wheel drive — and the sum is one unbelievably powerful and comfortably convenient vehicle that's just right for you. In addition to the many fantastic new features, Dakota's strength and durability remain a constant across the entire line. With Dakota, you get four decidedly different compact pickups. It only figures they're from Dodge.



Dakota Regular



Dakota Club Cab R/T



Different.



DAKOTA *SPORT*



Dodge Dakota Quad Cab™ Sport Plus 4x4 shown in Black

Now, imagine this is a

See. Feel. Hear. The Dakota's dynamic new streamlined stereo design features intuitive controls, cupped buttons that feel right to the fingers, and ultramodern blue-green fluorescent displays. Listen to

the standard AM/FM stereo radio and cassette player, or the available CD player with eight Infinity® speakers in six locations and studio-grade clarity. The available leather-wrapped steering wheel offers audio controls with a new sixth radio control button for safe and simple selection between AM, FM, cassette or CD.

Infinity is a registered trademark of Infinity Systems, Inc.



is included in the console for instant access to remote controls for your garage door, interior/exterior home lighting, even security devices.

HomeLink is a registered trademark owned by Johnson Controls, Inc.

truck.

Switch to convenience. Switching between four-wheel-drive performance options is now easier than ever. Moved from its traditional position on the floor, the new full-time transfer case control dial (shown at right) resides in a convenient position on the instrument panel. This position works to coordinate part-time or available full-time four-wheel drive performance and delivers a high degree of safety, security and convenience.







Dodge Dakota Quad CabSM interior shown with new available Leather Interior Group in Dark Slate Gray

The design have le



Well-insulated from the world outside. Listening to the stereo, your travel companions, or nothing at all is a comforting reality with Dakota Quad Cab. Sound-blocking innovations, high-density acoustic, and steel-tuned engine

Easy access for ease in excess. Folding Stow-and-Go™ rear seats that create almost 30 cubic feet of space when in the up position and rear doors that swing out to almost 90 degrees make it simple to load people or cargo into your Dakota. The four Dakota Quad Cab full-size doors also feature updated interior door handles

...it the room.



Storable and adorable. The underside of each contoured Stow-and-Go™ rear seat is nicely carpeted and appointed with strong elastic straps; perfect for holding loose items such as umbrellas, flashlights, and ice scrapers.



Space in. Dakota's backseats fold up independently of each other. This means more useful and versatile space for your passengers, your play things, or both.

Properly secure all cargo.

So many amenities. Your cellular phone, CDs, tapes, coins, tissue paper, one-liter bottle, 32-oz. cups, even your pen — there's space for all this and more — in the new center floor console. Add a redesigned steering column, which provides a more solid feel, along with the appearance of a sleek new instrument panel, and it's quite apparent that Dakota is headed for high style.



Dodge Dakota Quad Cab™ 4x4 SLT shown in optional two-tone Flame Red and Bright Silver Metallic

All stu

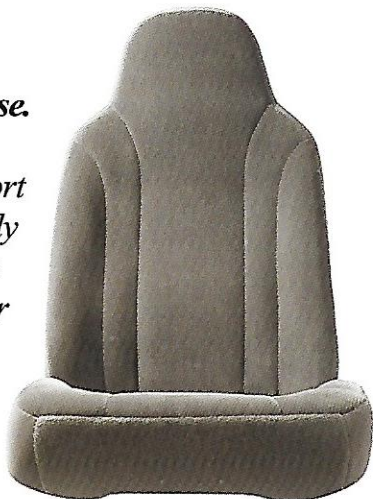


Need storage? Let the Dakota console you. Dakota's center floor console (shown on the left), is packaged with available front bucket seats and includes a power outlet and interior lamp. It is also loaded with ample room for storing your travel items. An oversized glove box with an Owner's Manual storage shelf and available door trim panel map pockets also offer a considerable amount of storage for your belongings. Maps, CDs, cellular phone, tapes, gloves, cups, you name it ... you can fit it.



ted up.

Designed to put you at ease. Dakota's optional bucket seats increase your comfort level with soft — yet sturdy — body-bearing cushions and back pads. Perfect for long-distance trips.



Power pack. With Dakota, you can really pack it in with either the available center floor console (shown far left), or the available center business console (not shown, available with 40/20/40 front seat). An exceptionally large, bin-type glove box and a generous number of front and rear cup holders come with either option. The Club Cab® rear bench also provides optimal storage in underseat storage compartments (shown above).



Comfortably strapped in for safety. A height-adjustable, five-position front outboard seat belt conforms to your body for a safe, snug fit ... no matter how tall or small you are.

Fill 'er up. Fold up the rear bench seat and cram Club Cab full of your camping and travel gear (as shown on the left) and there's still plenty of room up front for you and a passenger.

Three to go. When the rear bench seat is folded down, (as shown on the right) up to three passengers can ride comfortably in the back.

Both Club Cab interiors are shown in Taupe premium cloth







Dodge Dakota Club Cab® Sport Plus 4x4 shown in Bright White

Full-time pos



*A tight, 36-foot
turning diameter
quickly maneuvers
regular cab models*

*out of tight
spots. Dakota's*

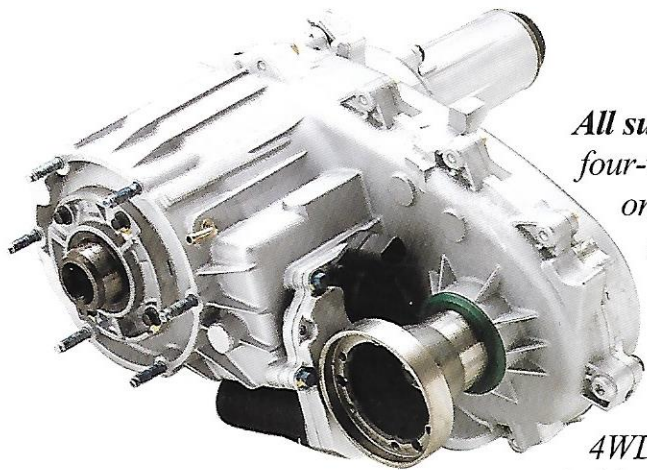
*scrub radius geometry reduces tire
wear during low-speed cornering.*

*The entire Dakota lineup boasts
power rack-and-pinion
steering for the ultimate
in handling control.*

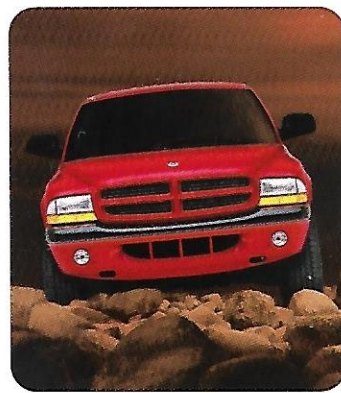


*Dodge Dakota Club Cab® Sport 4x4 shown in Black
with Monar Tubular Brush Guard, Tubular Side Steps*

tion available



All surfaces. All the time. Available full-time four-wheel drive gives you traction and control on any road surface — all the time — without switching performance options. With the driver-selectable part-time mode, used for more demanding off-road situations, a new electronic transfer case makes the shift-on-the-fly transition smooth. And the 4WD shifter is now an easily reachable control dial located on the instrument panel.

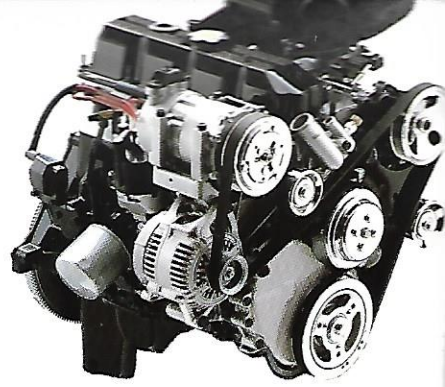


One tough ride. A double-wishbone front suspension — featuring heavy-duty gas-charged shock absorbers, a live rear axle, and multileaf springs — works with a stiff three-section carbon steel frame to maintain body integrity while providing lively suspension response.

Your answer for questionable roads. When you consider the Dakota's available tire and wheel options, which range from standard 15-inch all-season tires on 15x7-inch steel wheels to the R/T's 17-inch tires on 17x9-inch, cast aluminum wheels, you begin to realize Dakota means business; on or off the road. Choose either standard rear-wheel or available four-wheel antilock brakes for complete stopping power and control.

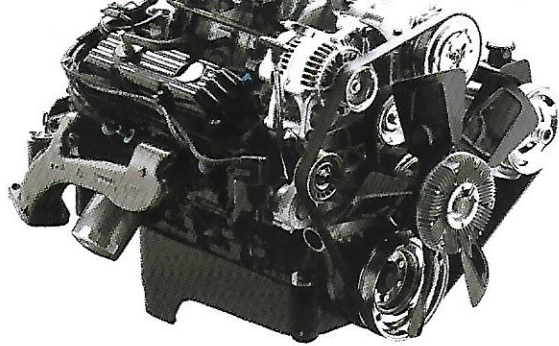
*These products are designed solely to enhance the appearance of the vehicle. Since their safety characteristics are limited, they are not intended to prevent injury or damage in the event of an accident.

Working class heroes.



Magnum® 2.5-liter I-4 with 120 horsepower provides 145 pound-feet of torque at 3,250 rpm and is standard on regular cab and Club Cab® 4x2 Base and Sport models. Available with a five-speed manual transmission only.

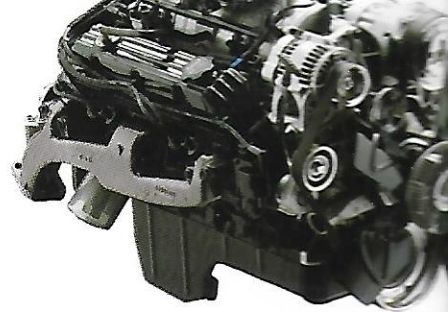




Magnum® 3.9-liter V6 with 175 horsepower is standard on all Quad Cab,[™] 4x4, and SLT models and optional on all others. This bold engine delivers 225 pound-feet of torque at 3,200 rpm.

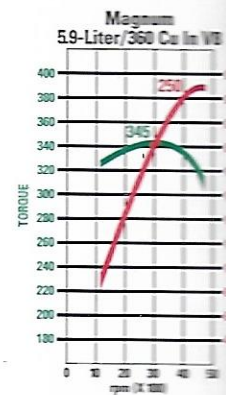
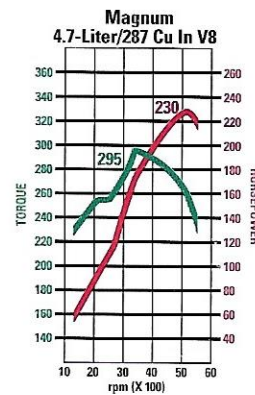
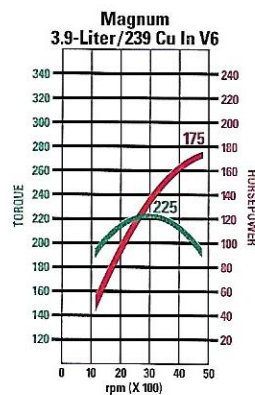
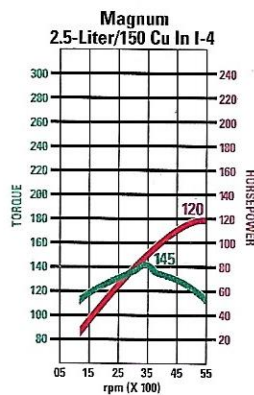
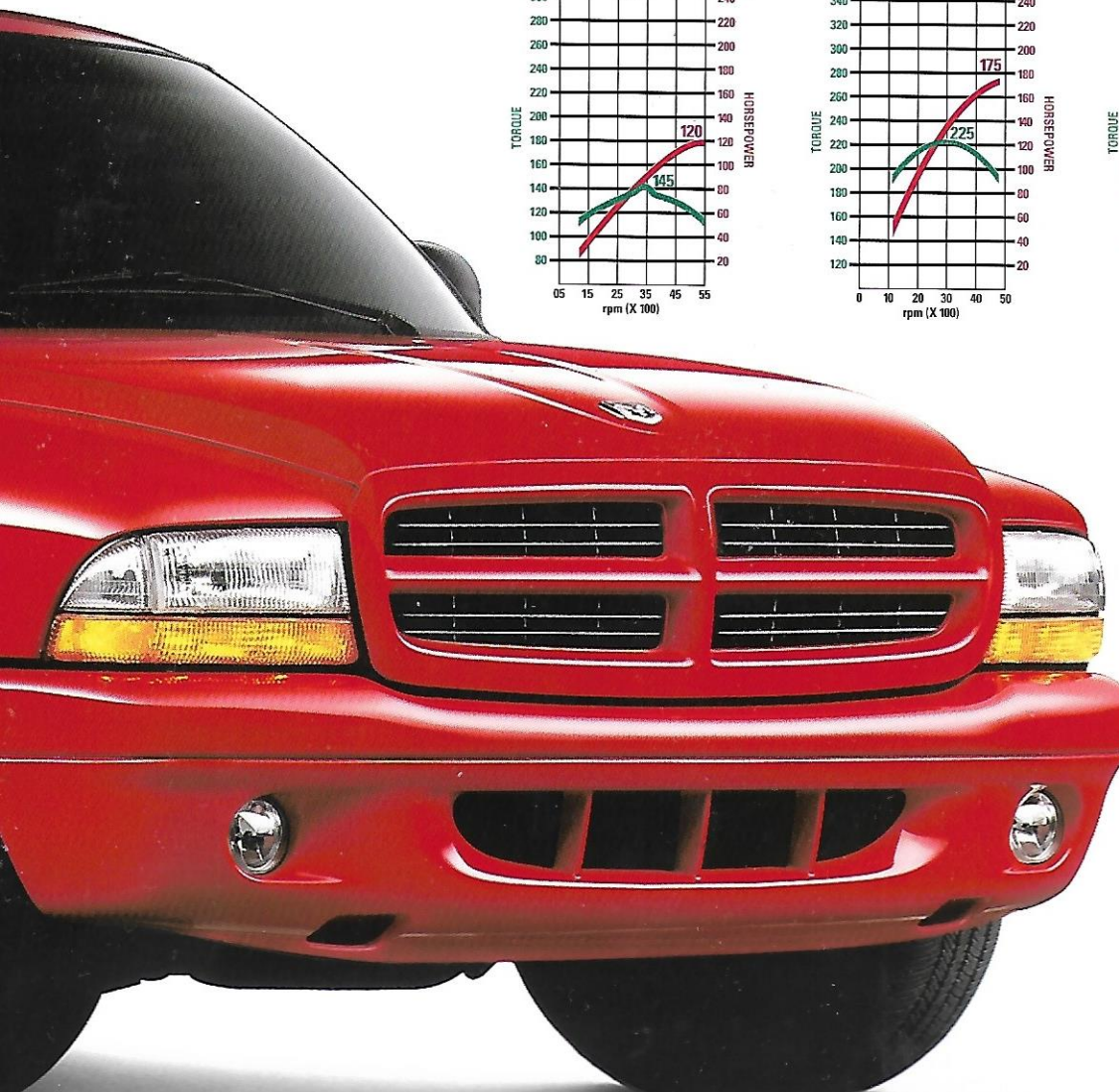


Magnum Next Generation 4.7-liter V8 with 230 horsepower features a lightweight composite intake manifold and lightweight pistons, rod assemblies, and high-flow cylinder heads for increased power.



Magnum 5.9-liter V8 with 250 horsepower* is standard on Dakota R/ and available on Quad Cab. This efficient and enormous engine supplies 345 pound-feet of torque at 3,200 rpm.

*245 horsepower on Quad Cab.
[†] 335 pound-feet of torque on Quad Cab.



Magnumeros. Dakota offers the widest range of engines in its class — from the 120-horsepower Magnum 2.5-liter I-4 to the biggest in-class Magnum 5.9-liter V8 with up to 250 horsepower.* All Magnum engines give you power and performance with sequential multipoint fuel injection. A 175-horsepower 3.9-liter V6 and a 230-horsepower next-generation 4.7-liter V8 are also available. Take your pickup.

*245 horsepower on Quad Cab.



T T O'W

Drive further and in confidence with Dakota Quad Cab™'s 24-gallon fuel tank. A quieter engine fan adds the assurance of dependable cooling performance. (Quad Cab is shown at the left with a hard-topped Mopar Folding Tonneau Cover.)



*Add covered storage area to your Quad Cab, with a custom designed bed cap (shown above) from Leer.**

* Available from Leer, a division of Truck Accessories Group, Inc.

g warrior.



You'll tow a boat load with Dakota's best-in-class towing and payload.* Choose the Heavy-Duty Service Group or Trailer Tow Group and your choice of axles for custom towing performance. New, large aerodynamic power-heated folding exterior mirrors are available on Sport and SLT models. They're the largest side mirrors in their class — larger than domestic competition — to help you see obstacles behind you.

* 4x2 regular cab models, when properly equipped.

Power Train and Performance Specifications

Engine	Transmission	hp	Torque (lb-ft)	Gross Combination Weight Rating			
				Standard Capacity		Maximum Capacity	
				Axle Ratio	GCWR ¹⁾ (lb)	Axle Ratio	GCWR ²⁾ (lb)
2.5L I-4 Magnum [®]	Man HD 5-Spd	120	145	3.55	5,400	3.92	5,800
3.9L V6 Magnum	Man HD 5-Spd	175	225	3.21	7,500	3.55	8,000
3.9L V6 Magnum	Auto 4-Spd	175	225	3.55	8,800	3.92	9,200
4.7L V8 Magnum	Man HD 5-Spd	230	295	3.55	9,500	3.92	10,500
4.7L V8 Magnum	Auto Multispeed	230	295	3.55	9,200	3.92	10,500
5.9L V8 Magnum Regular Cab R/T	Auto 4-Spd	250	345	3.92	6,000	—	—
5.9L V8 Magnum Club Cab [®] R/T	Auto 4-Spd	250	345	3.92	6,225	—	—
5.9L V8 Magnum Quad Cab [™] 4x2	Auto 4-Spd	245	335	3.55	9,200	3.92	10,800
5.9L V8 Magnum Quad Cab 4x4	Auto 4-Spd	245	335	3.55	9,200	3.92	10,800

	Magnum Engines				Available Payload Rating (lb)		Available Trailer Weight Allowances ³⁾ (lb)	
	I-4	V6	V8	V8	Standard	Optional	Standard	Maximum when properly equipped
Regular Cab 4x2 6.5-Ft Box	S	0	0	0	1,275	2,100 ³⁾	1,850	6,700
Regular Cab 4x4 6.5-Ft Box	S	0			1,450	1,950	4,000	6,400
Club Cab 4x2 6.5-Ft Box	S	0	0	0	1,275	1,450, 2,000 ³⁾	2,050	6,450
Club Cab 4x4 6.5-Ft Box	S	0			1,450	1,750	3,800	6,200
Quad Cab 4x2 5.3-Ft Box	S	0	0		1,450	—	3,200	6,300
Quad Cab 4x4 5.3-Ft Box	S	0	0		1,350	—	3,450	6,050
Dakota R/T 4x2 6.5-Ft Box	S				1,275	—	2,000	—

¹⁾ Gross Combination Weight Rating. ²⁾ Standard Trailer Tow Weight Allowance is a guide based on an unloaded truck with standard equipment and a 150-lb driver. Higher Trailer Weight Allowances are available with certain power train and axle ratio combinations. Weight allowance must always be reduced by the weight of optional equipment, trailer hitch, passengers (other than driver) and cargo in truck. Maximum tongue weight depends on the tow weight allowance and the payload. Load-squinting hitches are recommended for all trailers over 2,000 lb. See dealer for details on payload, trailer weight allowances and recommended towing practices. ³⁾ Not available with I-4 Magnum.





DAKOTA 5.9



Dodge Dakota Club Cab® R/T 4x2 shown in Bright Silver Metallic

Feets of strength



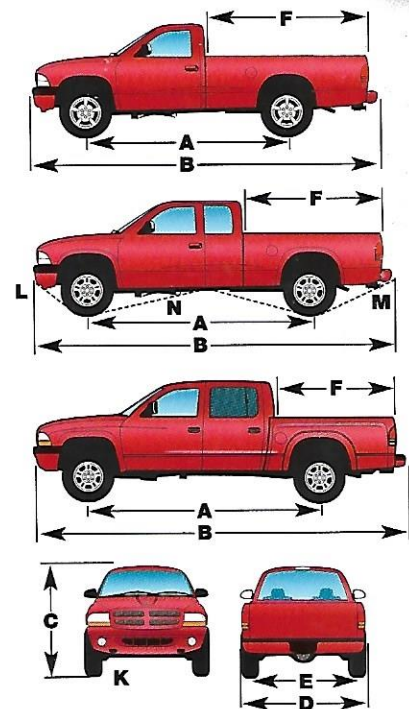
Tie down 1,000 pounds. The cargo tie-downs on every Dakota support up to 1,000 pounds of payload. Horizontal ridges in the box sides accommodate a divider to create two floors of storage. In addition, Dakota Quad Cab™ has cargo box inner slots that allow you to insert vertical dividers (shown on the left). At 5 foot 3 inches long, the Dakota Quad Cab has the largest bed of any compact pickup with four full-size doors.



Properly secure all cargo.

Dimensions (inches)	Regular Cab	Club Cab®	Quad Cab
☐ Wheelbase (4x2/4x4)	112.0/112.1	131.0/131.2	131.0/131.1
☐ Overall Length	196.0	215.1	215.1
☐ Overall Height (4x2/4x4)*	64.8/67.3	64.9/67.4	65.6/68.5
☐ Overall Width	71.6	71.6	71.6
☐ Track (4x2/4x4)*			
— Front	60.9/61.4	60.9/61.4	61.9/62.3
— Rear	61.4	61.4	62.5/62.4
☐ Maximum Box Length at Floor	77.7	77.7	63.7
☐ Maximum Box Width at Floor	59.3	59.3	59.3
☐ Box Depth	17.5	17.5	17.5
☐ Tailgate Opening	53.3	53.3	53.3
☐ Width Between Wheelhouses	45.1	45.1	45.1

*With standard tires.



Exterior Dimensions (inches)

Model	Ground Clearance (Empty)*		Approach Angle (Degrees)		Departure Angle (Degrees)		Breakover Angle (Degrees)	
	☐	☐	☐	☐	☐	☐	☐	☐
	4x2	4x4	4x2	4x4	4x2	4x4	4x2	4x4



Structural integrity ... another Dakota strength. Dakota's muscular frame handles 30,000 pounds per square inch. Its world-class four-wheel-drive front axle increases durability and torque capacity.

th.



1 Full stainless steel exhaust system, including muffler and tail pipe, for longer life.

2 Standard rear-wheel antilock brakes help prevent rear-wheel lockup.

3 Standard front-wheel disc brakes with 11-inch rotors help provide steering control while braking. Get maximum control with available four-wheel antilock brakes, which help maintain directional stability under hard braking situations.

4 Standard 22-gallon* and 24-gallon (Quad Cab™) fuel tanks are made of high-density polyethylene and mounted within the frame rails for safety.

5 Stiff three-section carbon steel frame maintains body integrity while allowing full suspension flex.

6 Cab is isolated from road noise and shocks by six rubber cab mounts (eight on Quad Cab) outboard of the frame.

7 Inverted rubber "V" engine mounts, specifically tuned for each engine, reduce power train vibration and interior noise.

8 The available Tire and Handling Group includes P255/65R16 OWL all-season tires (4x2 models) or P265/70R16 OWL all-terrain tires (4x4 models). 16x8-inch cast aluminum wheels, color-keyed wheel flares (4x4 models only) and a rear stabilizer bar[†] improve handling performance.

9 Steering scrub radius geometry is engineered for a tight turning radius, fast response and improved feedback for precise handling. Rack-and-pinion steering is standard on all models.

10 Shift-on-the-fly 4x4 transfer case allows shifting from 4x2 to 4x4 high gear without stopping for increased convenience in varying terrain and traction conditions.

11 Skid plate protection for front suspension, transfer case and fuel tank is included in the optional 4x4 Skid Plate Group.

* Standard 20-gallon fuel tank will be introduced at mid-model year.

† Rear stabilizer bar not included with 4x2 regular cab models.



Formidable comp

The key to safety. With the Power Convenience Group, available on all Sport and SLT models, you get the ease and safety of remote keyless entry. The keyless remote enables you to first unlock only the driver's door, then all remaining doors. A new available Sentry Key® Engine Immobilizer system protects against theft by disabling the Dakota's engine controller if an invalid key or "hot wiring" is used to start the vehicle.



le onents.



available four-wheel antilock brakes deliver a level of control (left) far greater than that of non-ABS systems.



On the safe sides. High-strength steel door beams on every Dakota — including all four of the Quad Cab full-size doors — provide reinforced protection to meet federal dynamic side-impact standards for passenger cars, multipurpose vehicles, and light-duty trucks under 6,000 pounds Gross Vehicle Weight Rating.

Next Generation driver and front-passenger air bags* are standard on every Dakota and employ a single-stage inflation system for advanced response.

A key-actuated dash-mounted passenger-side air bag on/off switch is featured on every Dakota except Quad Cab.™

Dakota Quad Cab standard safety features include new pretensioning and load limiting seat belt retractors for both the driver and front passenger for added impact protection, child-protection rear door locks, and an innovative wraparound box design.



* Certified to the Federal Regulations that allow less forceful front air bags. Always use seat belts. Children 12 and under should always be in a back seat in Dakota Quad Cab or can be in the front seat only with the passenger air bag turned off in regular cab and Club Cab® models correctly using an infant or child restraint system or a seat belt that is right for their age and size.

Over 85 years, Dodge has earned a reputation for creating cars, trucks, and minivans that are truly different. We bring new designs into production fast. We create innovations — Dodge Caravan, for example, the original minivan — that serve people better than before. Dodge is original in its thinking, aggressive in its technology, bold in vision, and responsible in its regard for safety.



Why Dodge.



Everyone is Different.

We're proud to be able to fulfill the changing needs of ALL drivers — heads of families, first-time owners, free-spirited adventurers, and hard-working men and women whose own dependability demands cars, trucks and vans as tough as the jobs they do.

Things you can count on.

When you choose Dodge, you can count on innovations created especially to assure you of a family-safe, quality-quiet, performance-confident driving experience. Ask your dealer about battery savers, 100,000-mile scheduled

Shopping resources.

We've even reinvented the way we get our vehicles to you. We post the very latest national incentive information on our Web site, www.4adodge.com, and we send it to you in the mail. We're also ready to talk to you any time at **1-888-4-A-Dodge**, or ask your dealer about money-saving offers or special financing that may be available on certain models for eligible customers.

Special Programs.

Dodge recognizes the unique needs of small businesses. **BusinessLink™** is a

to commercial customers. These dealers are committed to selling and servicing your business-related vehicles to save you time, money and hassles. Call **(877) 2-THE-LINK** to learn more.

ON THE JOB is a special incentive program for qualified commercial buyers. Small businesses are eligible for cash discounts or allowances on upfit equipment for trucks and vans. To learn more about incentives for which your business may be eligible call **(877) ON THE JOB**

seasonal payment plans and preferred rates to eligible businesses. Call (888) 9-CFO-NOW for more information.

The **Automobility** program is another Dodge innovation that provides cash reimbursement to qualified retail buyers for adaptive equipment on new Dodge vehicles. For information on incentives and factory approved upfitters of



Bumper-To-Bumper Warranty* that includes **Roadside Assistance*** — 24 hours a day, seven days a week. And please ask your dealer about **Dodge Service Contracts**, and our **Customer Call Center**, where you can get practical service advice 24/7.

Challenge, Barber Dodge Pro Series, NASCAR Craftsman Truck Series,[®] the Viper Le Mans Series, and more. Dodge is asserting a bold and powerful presence in the motorsports world, and millions of fans are loving it.

Benefits of ownership.

Being a Dodge owner also means you'll receive timely information on the newest Dodge products, dealership service pricing, and Dodge-

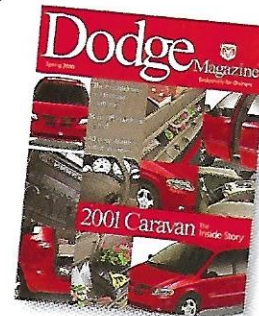
sponsored events. You can take part in exclusive Dodge-only activities, like vacation events you'll remember all your life.

You'll also receive **Dodge Magazine** three times a year — a wealth of owner stories, industry news and valuable parts and service offers.

Millions of Dodge owners like to accessorize their vehicles. And eventually, most vehicles need parts. At Dodge, **Mopar** is your resource for parts and accessories made specifically to deliver perfect fit and finish for your Dodge vehicle.

Sponsorship.

Intrepid R/T's entry in the 2001 Daytona 500 marks the Dodge return to the NASCAR[®] Winston Cup Series, and



We want you to be a part of Dodge. We want you to share our history of industry firsts and industry and consumer group awards. And we think you'll be proud to own a vehicle honored for excellence. Choose Dodge. For nearly a century, we've dedicated ourselves completely to being worthy of your trust. Today, you'll find that's Different.

adaptive driving devices including wheelchair lifts, call Automobility Headquarters at (800) 255-9877.

Warranty and service.

As part of the Dodge family, you've got a powerful advocate in vehicle warranty service, maintenance, and

* See your dealer for additional details and a copy of this limited warranty. Covers the complete vehicle against defects in materials and workmanship. Excludes wiper blades, clutch disc, brake pads, linings, rotors and drums, normal maintenance items (these items are covered against defects for 12 months or 12,000 miles, whichever comes first) and tires (covered by their own manufacturer's warranty). Some truck powertrains are warranted by their supplier to DaimlerChrysler Corporation.

† Road service provided by Cross Country Motor Club, Inc. (In California, Cross Country Motor Club of California, Inc.)

Colors,

	BASE	SPORT	SLT	BASE	SPORT	SLT	SPORT	SLT
Seats								
Fabric — Vinyl	●							
— Ashford Cloth	0							
— Yosemite Cloth		●	●	●	●	●	●	●
— Leather-trimmed with front high-back buckets (included with Leather Interior Group)							P	P
Front — Bench with integrated head restraints	●							
— 40/20/40 split bench with center folding armrest		●	●	●	●	●	●	●
— High-back buckets with center floor console (includes power outlet and lamp inside console)		0	0	0	0	0	0	0
— Six-way power driver's seat				0	0	0	0	0
Rear — Premium cloth 60/40 split-bench with under seat storage compartments				●	●	●		
— Stow-and-Go™ 60/40 split-bench with automatic latch design, two cup holders, and under seat storage							●	●
Sentry Key® Engine Immobilizer — Theft-deterrent system with encoded key, includes 2 keys (included with Vehicle Security System)		P	P		P	P	P	P
Skid Plate Group — Skid plates for fuel tank, transfer case and front suspension (4x4 models only)	0	0	0	0	0	0	0	0
SLT Decor Group — Cloth door trim panel with map pocket, Light Group, air conditioning, floor carpet, floor mats, hood insulation, bright front bumper, bright rear step bumper, bright grille, gray fascias, bright "Dakota" door badge, "SLT" hard door badge and 15"x7" cast aluminum wheels				●		●		●
SLT Plus Decor Group — Power Convenience Group and Tire and Handling Group			0		0		0	
Sound System — AM/FM stereo radio and cassette player with 3-band equalizer, changer controls and 8 Infinity® speakers in 6 locations		0	0		0	0	0	0
— AM/FM stereo radio with CD player and changer controls and 8 Infinity speakers in 6 locations		0	0		0	0	0	0
— AM/FM stereo radio with combination cassette/CD player graphic equalizer and 8 Infinity speakers in 6 locations		0	0		0	0	0	0
— 6 audio controls on steering wheel (requires Power Convenience Group, leather wrapped steering wheel and AM/FM stereo premium radio with combination cassette/CD player and graphic equalizer)		P	P		P	P	P	P
Sport Appearance Group — "Sport" decal located on door, body-color painted grille, body-color fascias, 15"x7" cast aluminum wheels, cloth door trim panel w/map pocket and floor carpet		●			●		●	
Sport Plus Group — Tire and Handling Group, Light Group, air conditioning and fog lamps		0			0		0	
Steering Wheel — Leather-wrapped (requires Deluxe Convenience Group) (included with R/T Group)		0/P	0		0/P	0	0	0
Tire and Handling Group — 4x2; P255/65R16 OWL all-season tires, 16"x8" cast aluminum wheels and rear stabilizer bar		0	0		0	0	0	0
— 4x4; P265/70R16 OWL all-terrain tires, 16"x8" cast aluminum wheels, body-color wheelflares, and rear stabilizer bar		0	0		0	0	0	0
Tires — P215/75R15 BSW all-season	●			●				
— P215/75R15 RWL all-season (4x2 models)		●	●		●	●	●	●
— P235/75R15XL BSW all-season (4x2 models)	0	0	0	0	0	0	0	0
— P255/65R16 OWL all-season (5) (4x2 models) (included with Tire and Handling Group)		P	P		P	P	P	P
— P255/55R17 BSW all-season (5) (4x2 models) (included with R/T Group)		P		P				
— P235/75R15XL OWL all-season (4x4 models)		●	●		●	●	●	●
— P265/70R16 OWL all-terrain (5) (4x4 models) (included with Tire and Handling Group and includes body-color wheelflares)		P	P		P	P	P	P
Trailer Tow Group — Class IV platform hitch receiver, 7-lead wiring harness mounted on the hitch for direct plug in, and 7/4-pin adapter wiring pigtail (requires Heavy-Duty Service Group)		0	0	0	0	0	0	0
Transfer Case — 4x4 models only								
— NV233HD electronic, part-time "shift-on-the-fly"	●	●	●	●	●	●	●	●
— NV244HD electronic, full-time (requires V8 engine and automatic transmission)		0	0		0	0	0	0
Two-Tone Paint — Lower break			0			0		0
Vehicle Security System — Security alarm, Sentry Key® Engine Immobilizer (requires Power Convenience Group)		0	0		0	0	0	0
Wheels — (see wheel chart)								
Window — Rear sliding with dark-tinted glass		0	0	0	0	0	0	0
— Rear, one-piece	●	●	●	●	●	●	●	●
— Rear flip-out quarter				●	●	●		

● = Included. P = Available within package noted. 0 = Optional. 0/P item is a free standing option and is also included in a package group.
 * 4x2 models only.
 † Available with R/T Group on 4x2 models only.
 ‡ Not available with 2.5L I-4 engine.
 § Not available with sliding rear window.
 ¶ 20-gallon fuel tank will be introduced at mid-model year.
 †† Not available with 2.5L I-4 engine, R/T Group or 3.27 rear axle ratio. Rear stabilizer bar not included on 4x2 regular cab models.
 ††† Not available with 2.5L I-4 engine or 4x2 regular cab models.
 HomeLink is a registered trademark owned by Johnson Controls, Inc.
 Infinity is a registered trademark of Infinity Systems, Inc.



15x7-inch styled steel wheel (standard on base models)



15x7-inch aluminum wheel (standard on Sport models)



16x8-inch cast aluminum wheel (included with Tire and Handling Group)



17x9-inch aluminum wheel (included with R/T Group)

SPORT PLUS GROUP — Tire and Handling Group, Light Group, air conditioning, fog lamps. Optional on Sport models.

SLT PLUS DECOR GROUP — Power Convenience Group and Tire and Handling Group. Optional on SLT models.

LEATHER INTERIOR GROUP — Leather-trimmed seating with front high-back buckets (requires Sport Plus or SLT Plus Decor Group, Power Convenience Group, power 6-way driver's seat, and Infinity speakers) (Optional on Quad Cab models).

R/T GROUP — 5.9L V8 engine, 4-speed automatic transmission, Light Group, Power Convenience Group, cloth bucket seats, or 40/20/40 split-bench seat (no charge option), "Dakota 5.9 R/T" door decal, "5.9 R/T" tailgate decal, color-keyed wheelflares, body-color front and rear upper and lower fascias, hood insulation, heavy-duty stabilizer bar, leather-wrapped steering wheel, fog lamps, suspension lowered by 1/2 inch, P255/55R17 BSW performance tires, 17x9-inch cast aluminum wheels, limited slip rear differential, and 3.92 rear axle ratio. Optional on regular cab and Club 4x2 Sport models only.



Heavy-duty vinyl bench seat shown in Taupe (standard on Base regular cab)



Ashy bench shown in Taupe (available on regular cab models)



Yosemite Cloth shown in Dark Slate Gray (available bucket seat on Sport and SLT models shown, also available in Taupe)



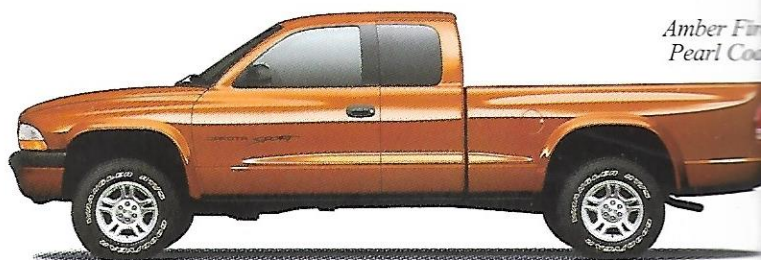
Leather-trimmed bucket shown in Dark Slate Gray (available on Quad Cab models, also available in Taupe)

VIEWS AND MORE.

Flame Red



Amber Fire Pearl Coat



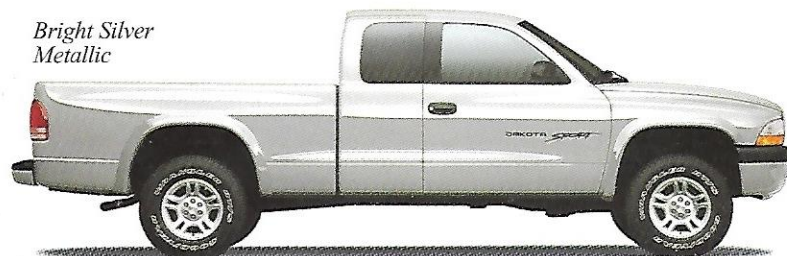
Black



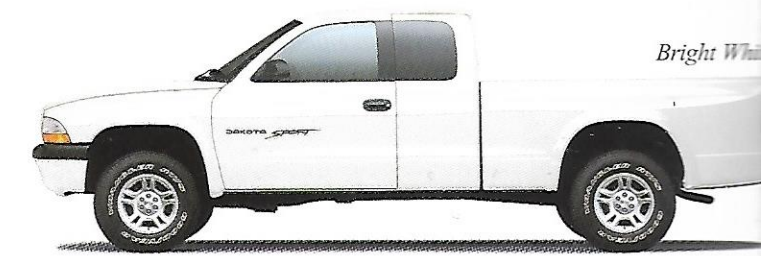
Intense Blue Pearl Coat



Bright Silver Metallic



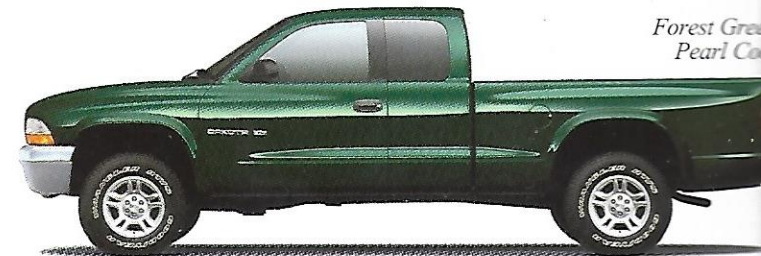
Bright White



Patriot Blue Pearl Coat



Forest Green Pearl Coat



Dark Garnet Red Pearl Coat



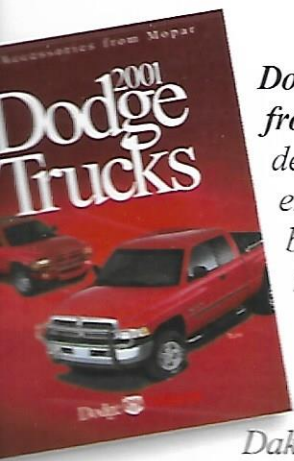
Medium Brown Metallic



About this catalog. Since the time of printing, some of the information you'll find in this catalog may have been updated. Ask your dealer for details. Some of the equipment shown or described throughout this catalog is available at extra cost. Specifications, descriptions, illustrative materials and all competitive comparisons contained herein are as accurate as known at the time this publication was approved for printing. DaimlerChrysler Corporation reserves the right to discontinue models at any time or change specifications without notice or without incurring obligation. All options are required in combination with other options. For the price of the model with the equipment you desire, or verification of specifications contained here, see your Dodge dealer.

Colors shown will vary slightly from actual hues. See your dealer for accurate colors. Clear Coat finish is standard on every Dakota.

Accessories made exclusively for Dakota.



Dodge Accessories from Mopar are designed and engineered by the same innovators who created Dakota. So tailor your Dakota to your needs with accessories that look good, fit right, and are covered by either the 3 year/36,000-mile Bumper-

Warranty. Ask your dealer for full details and a copy of the warranty.

Gull Wing Tonneau Cover for Dakota Quad Cab.™

A new three-lid design gives you superior versatility by allowing access to items stored in the front of the bed.



grille guards; this strong guard accents Dakota's bold look with 2-inch premium tubing.

Light Bar/Bed Rail Combo.

Illuminate the road ahead with 6x9-inch rectangular lights in chrome or black steel housings with lens covers.



Dodge Different.

You won't find the obvious at Dodge. In fact, our designers and engineers pride themselves in exploring previously uncharted territory.

It's a path that began over 10 years ago with the creation of the Viper RT/10 concept car. That concept became a reality. And so did a different approach to the creation of automobiles. Today, all Dodge cars and trucks are created that way. By closely knit teams of talented people from every automotive-related discipline. Their assignment: Find different ways to be better. And drive better. That means producing vehicles that work better, thanks to innovations like minivans that are easier to get into and out of. Pickups that can haul and tow well, in many ways. Sedans that are sleek, yet spacious and exciting to drive. A sport utility that stakes out its own domain. And a sports car that's unrivaled on the road. And on the track. Each one embodies a totally different approach to the tried and true. And, like Dodge, each has become a quickly moving target the competition seeks to emulate.

You can reach us at 888-4-A-DODGE, or on our Web site, www.4adodge.com.