

2005 LEXUS SC



 LEXUS

## 2005 LEXUS SC Style



**Look at it? Drive it? Look at it? Drive it? (Quite the daily predicament, indeed.)** If there's ever been such a thing as eye candy, this is it. Of course, when you send a group of engineers to the south of France for inspiration, what else would you expect them to come back with? We sent our team of designers and engineers to the Côte d'Azur to soak up the finest hotels, villas and chateaus. The idea was that they could study, and then capture, the nature of luxury. One look at the results and we think you'll agree their mission was a success. From the sleek lines to the teardrop headlamps to the chrome grille, the beauty of the 2005 Lexus SC is of a style all its own. And once on the road, it will conjure up the passion, intensity and excitement that our engineers experienced while chasing the vision that now lies before you. In short, we like to believe it is the perfect mixture of beauty and performance. Which begs an interesting question: Is it for driving? Or is it for admiring?

## 2005 LEXUS SC Performance



Don't let its good looks fool you: This Lexus can humble even the most tested stretches of roadway. Powered by a 300-horsepower, 4.3-liter V8, the SC is a sport coupe that devours the road in a way quite contrary to what its classic, sophisticated beauty might suggest. One of the primary reasons for this is that it uses Variable Valve Timing with intelligence (VVT-i) to constantly fine-tune its intake valve operation, maximizing efficiency in virtually any driving scenario. Intuitive Powertrain Control manages throttle operation by computer, and links the engine and five-speed Electronically Controlled Transmission with intelligence (ECT-i) together for nearly seamless operation. This system automatically compensates for uphill, downhill and head winds, and even enhances part-throttle acceleration, making the engine feel even faster. A fact that quickly explains the need for its massive disc brakes.

Additionally, the 2005 SC has a four-wheel, double-wishbone suspension, as well as speed-sensitive, variable-assist power steering in order to maximize its performance capabilities.

## 2005 LEXUS SC Exterior



**Up and down in a matter of seconds. Your pulse? No, the convertible hardtop of the 2005 SC.** As you might imagine, there's absolutely nothing about the Lexus SC that isn't breathtaking. Least of all, its ability to hide the roof within the confines of its trunk in a mere 25 seconds. For starters, unlike most other convertibles, the Lexus SC contains no latches, catches, snaps or covers. In fact, it has only one button. That's it. When the aluminum-alloy roof completes its course – a process that occurs in near silence – a chime will let you know that you can take your finger off the button. Additionally, even with the top residing in the trunk, there's still enough room for a full-sized golf bag.<sup>1</sup> Another impressive fact is that it defies traditional convertible logic by remaining perfectly solid, secure and weatherproof – sans flutters, drafts or leaks – when the top is up. The 2005 Lexus SC. Clearly the cure for the common convertible.

<sup>1</sup>See page 15 for more information.

## 2005 LEXUS SC Interior



Just as beauty is an integral part of the SC, so is precision engineering – evidenced by the aerodynamics of the windshield, high cockpit cowling and wind deflector between the rear headrests, which are designed to reduce buffeting as well as drafts.

## 2005 LEXUS SC Interior



Imagine yearning for rush hour. One. Two. Perhaps even three magnificent hours to bask in the unparalleled world of Lexus luxury. It might seem like a bit of a stretch, but only until you enter the SC cabin. Once inside, you'll feel the hand-stitched, fine Bader leather trim and this desire will make perfect sense. In addition to their fine leather, both front seats are heated, power-adjustable and have two-position memory systems that actually conform to your body for a custom fit. Also contributing to the impeccable interior beauty of the SC are the sweeps of walnut or light golden bird's-eye maple trim that can be found throughout the cabin, as well as on the handsome, wood- and leather-trimmed steering wheel. And for an added element of luxury and convenience, the steering wheel has been thoughtfully equipped with audio controls and cruise-control switches.

## 2005 LEXUS SC Mark Levinson® Premium Audio System

Just how different is the SC from other convertibles? Let's just say it's the first to ever break the sound barrier. In order to provide SC owners with the finest driving experience possible, Lexus teamed up with the Mark Levinson<sup>2</sup> brand, designers of six-figure home audio systems. Together, they designed a nine-speaker, seven-channel, DSP-amplified system, complete with an in-dash, six-disc CD auto-changer that can, quite literally, compensate for a wide range of driving variables. What is truly amazing about this system is that it monitors whether you have the top up or down, and then adjusts the frequency equalization, and volume and bass response accordingly. The end result is an optimal audio quality that truly mimics a live performance. And you, of course, have front-row seats. Additionally, when the system is not in use, an elegant, genuine wood-trimmed cover swivels down to hide the audio head unit, helping to maintain the interior beauty.



<sup>2</sup> See page 15 for more information.

## 2005 LEXUS SC Navigation System



Just in case you get a little too lost in the music. Yes, the Mark Levinson®<sup>2</sup> system really is that good. But don't worry, the full-color, wide-screen, DVD-based NAV system<sup>3</sup> will have you back on track in no time. This GPS satellite-linked system can direct you to thousands of destinations in the contiguous United States and major cities in Canada – including fuel stations, ATMs, hotels, airports and restaurants – all thanks to its huge DVD database. And gone are the days of forgetting birthdays or anniversaries, as you can program the system to remind you of these, and other, important dates.



When using the system while the top is down, the display screen power-tilts to your preference, helping to reduce glare. And in similar fashion to the Mark Levinson Premium Audio System, when the NAV display is not in use, a genuine wood-trimmed cover silently glides into place at the push of a button.

The seven-inch Lexus DVD Navigation System<sup>3</sup> display features touchscreen technology: Just point where you want to go and the system does the rest. It can plot up to three separate routes to a given destination, and can show visual directions and an overall map of the area simultaneously, giving you a complete picture of where you are – and where you are going. While you're en route, simple visual cues denote turns, accompanied by clear, easy-to-understand voice guidance.

<sup>2,3</sup> See page 15 for more information.



## 2005 LEXUS SC Safety

Despite its convertible capabilities, the SC has remarkable structural integrity due to a rigid, steel-reinforced chassis – a structure that’s able to resist bending and twisting in hard cornering, as well as when running over bumps and potholes. Safety features include Vehicle Stability Control (VSC)<sup>4</sup> – which modulates the throttle and applies brakes selectively to help control traction loss in cornering situations, Traction Control – which slows the drive wheels if they reach the threshold of wheelspin, anti-lock brakes (ABS) – to help maintain steering control, even during hard braking, and Electronic Brakeforce Distribution (EBD) – which balances braking under different vehicle loads and cornering situations. And for night driving, there’s auto-leveling, projector-beam High-Intensity Discharge (HID) headlamps that reach out farther into the night, for a wider, brighter field of vision with reduced glare for oncoming drivers.



<sup>4</sup>See page 15 for more information.

## 2005 LEXUS SC Safety



A front airbag Supplemental Restraint System (SRS)<sup>5</sup> is designed to help protect the driver and front passenger in the event of a severe frontal collision. Furthermore, front seat-mounted side airbags<sup>5</sup> can help reduce the effect of certain types of severe broadside collisions. There are also three-point seatbelts with front pre-tensioners and force limiters, crumple zones, a collapsible steering column and impact-dissipating upper interior trim, to help manage the impact energy in certain types of collisions.



<sup>5</sup>See page 15 for more information.

## 2005 LEXUS SC Ownership Experience

At Lexus, everything we create is designed to help you make the most of every moment. Our thoughtful amenities, numerous safety features and superior customer service provide a level of comfort and pleasure that will transcend into every aspect of your life. It is, in fact, our passionate pursuit of perfection that makes Lexus owners some of the most satisfied drivers on the road today. Not to mention a significant reason why so many of our existing customers keep coming back again and again. And we think you'll come to find that it is this very philosophy that helps make owning a Lexus just as rewarding as driving one. If you don't believe us, just ask anyone who's been behind the wheel of one of our automobiles.



### CUSTOMER SATISFACTION

Given our years of award-winning customer satisfaction, your experience at a Lexus dealership will be unlike any other. You may find such amenities as customer lounges, offices you can use for business, free pickup and delivery, service loaner vehicles, complimentary car washes and even concierge services. And every Lexus owner has access to our 24-hour emergency Roadside Assistance program for their first four years of ownership.\* So if you ever need help, no matter what time of night or day, it's just a phone call away.

### VALUE/DEPENDABILITY/QUALITY

The value of owning a Lexus involves much more than just its purchase price. It also includes our well-earned reputation for vehicle dependability, projected low repair costs and high retained value, in addition to such intangibles as outstanding customer satisfaction, unparalleled quality, peace of mind and loyalty. And while you may not be able to put a price tag on such intangibles, the feeling can sometimes be more reassuring than money in the bank.

### RESPONSIBLE THINKING

At Lexus, we encourage wise use of natural resources, promote driving responsibly when traveling on-road and off, and try to reduce emissions whenever possible. In fact, all 2005 Lexus vehicles will be certified as either Low-Emission Vehicles (LEV) or Ultra-Low Emission Vehicles (U-LEV) or (U-LEV II). In short, we try to make Lexus a company that everyone can feel good about, whether you happen to be driving one or not.

\*Coverage only available in the continental U.S. and Canada. Please see your local Lexus dealer for details on our Roadside Assistance program.

## 2005 LEXUS SC Options & Accessories



Of all the possible adjectives that could be used to describe the 2005 SC, well-endowed just might top the list. After all, name another car that comes with such fine standard features as a DVD NAV system,<sup>3</sup> fine Bader leather, genuine walnut or light golden bird's-eye maple trim, a Mark Levinson<sup>®</sup><sup>2</sup> Premium Audio System and 18-inch alloy wheels.<sup>6</sup> Something tells us you're not likely to find a close competitor. However, just for fun, we do offer a few extras. The first is run-flat tires,<sup>7</sup> which can carry you 100 miles at up to 55 miles per hour with zero air pressure. The other is a rear spoiler, which not only adds a nice character line to the SC, but also makes it even more aerodynamic.

### INDIVIDUAL OPTIONS AND ACCESSORIES

Summer run-flat tires<sup>7</sup> ▪ All-season run-flat tires<sup>7</sup> ▪ Car cover ▪ Cargo net ▪ Front-end mask ▪ Rear spoiler ▪ Trunk mat ▪ Wheel cover ▪ Wheel locks

<sup>2,3,6,7</sup> See page 15 for more information.

# 2005 LEXUS SC Specifications

## BODY, DIMENSIONS

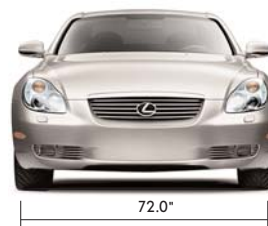
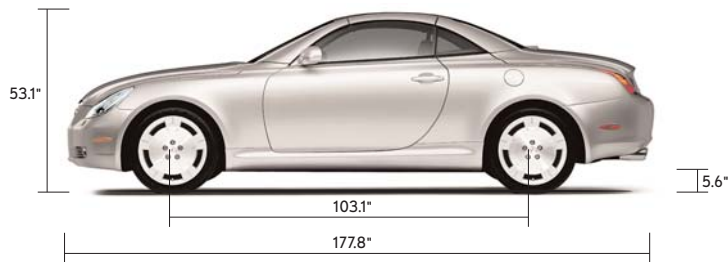
Type	Four-passenger retractable hardtop luxury convertible
Construction	Welded-steel unibody
Overall Length	177.8 in
Width	72.0 in
Height	53.1 in
Wheelbase	103.1 in
Ground Clearance	5.6 in
Curb Weight	3,840 lb
Fuel-tank Capacity	19.8 gallons
Trunk Capacity	8.8 cubic feet/9.4 cubic feet <sup>1</sup>
Headroom (front/rear)	37.2/33.9 in
Legroom (front/rear)	43.6/27.1 in
Shoulder Room (front/rear)	53.8/46.6 in

## ENGINE

Type	90° V8, aluminum block and heads, certified Ultra-Low Emission Vehicle (U-LEV)
Displacement	4.3 liters (261 cubic inches)
Valvetrain	Four cam, four valves per cylinder, with continuously Variable Valve Timing with intelligence (VVT-i)
Compression Ratio	10.5:1
Horsepower at RPM	300 hp @ 5,600
Torque at RPM	325 lb-ft @ 3,400

## PERFORMANCE

0-60 MPH Acceleration	5.9 seconds*
1/4-Mile Acceleration	14.4 seconds*
Top Track Speed	143 mph (electronically limited)*
Estimated Fuel Consumption	18/23 mpg city/highway <sup>†</sup>
Aerodynamic Drag Coefficient	0.31 (0.30 with optional rear spoiler)
Turning Circle	35.4 ft



\*These performance capacity figures are for comparison only, and were obtained with prototype vehicles by professional drivers using special safety equipment and procedures. Do not attempt.

<sup>†</sup>2005 EPA-estimated mpg. Actual mileage may vary.

<sup>1</sup>See page 15 for more information.

## 2005 LEXUS SC Specifications (Continued)

### CHASSIS

<b>Vehicle Stability Control (VSC)<sup>4</sup></b>	Electronic system that monitors and helps control the loss of traction in a turn by using yaw-rate, deceleration, vehicle-speed and steering-wheel-angle sensors. Modulates engine power and applies individual brakes as necessary. Integrates Anti-lock Braking System (ABS), Brake Assist* and Traction Control (TRAC).
<b>Suspension</b>	Front: Independent, double-wishbone with high-mount upper arm, coil springs, gas-pressurized shock absorbers with internal rebound springs, stabilizer bar. Rear: Independent, double-wishbone with aluminum upper arm and toe-control arm, coil springs, gas-pressurized shock absorbers, stabilizer bar.
<b>Steering</b>	Vehicle-speed-sensing, progressive power-assisted rack-and-pinion. 3.3 turns, lock to lock.
<b>Brakes</b>	Four-wheel power-assisted discs, with four-sensor, four-channel Anti-lock Braking System (ABS) with Electronic Brakeforce Distribution (EBD) and Brake Assist.* 11.7-in ventilated front discs, 12.1-in solid rear discs.
<b>Wheels and Tires</b>	18 x 8.0-in alloy wheels. 245/40ZR18 steel-belted radials. <sup>6</sup> Temporary spare tire on steel wheel. Optional summer run-flat tires (245/40ZR18) or all-season run-flat tires (245/40VR18). <sup>7</sup>

### DRIVETRAIN

<b>Transmission</b>	Five-speed automatic Electronically Controlled Transmission with intelligence (ECT-i). Overdrive fifth gear, auto-select shift program, engine/transmission networking, flex-lockup torque converter.
<b>Drive Wheels</b>	Rear, with standard Traction Control (TRAC).
<b>Final Drive Ratio</b>	3.27:1

### SAFETY AND SECURITY

Ventilated front/solid rear disc brakes with four-channel Anti-lock Braking System (ABS) with Electronic Brakeforce Distribution (EBD) ■ Brake Assist\* ■ Vehicle Stability Control (VSC)<sup>4</sup> ■ Traction Control (TRAC) ■ Strong body structure with front and rear crumple zones ■ Dual side-impact door beams ■ Reinforcements in pillars and doorsills ■ Impact-dissipating upper interior trim ■ Collapsible steering column ■ Driver's and front passenger's airbags (SRS)<sup>5</sup> ■ Front seat-mounted side airbags (SRS)<sup>5</sup> ■ Three-point seatbelts front and rear, fronts with pre-tensioners and force limiters ■ Child Restraint Seat (CRS) tether anchor brackets for all rear seating positions ■ Automatic Locking Retractor/Emergency Locking Retractor (ALR/ELR) seatbelts for all seating positions (driver's – ELR only) ■ Automatic on/off projector-beam High-Intensity Discharge (HID) headlamps with dynamic auto leveling ■ Daytime running lights ■ Integrated foglamps ■ Variable intermittent windshield wipers with mist cycle ■ Water-repellent front-door glass ■ Power-adjustable outside mirrors with timed defoggers ■ Vehicle theft-deterrent and engine immobilizer system, with in-key transponder ■ Rear-window defogger with auto-off timer ■ First aid kit ■ Tool kit ■ Four-sensor Tire Pressure Monitor System<sup>8</sup> ■ Valet lockout function for trunk, glovebox, lower center console box and convertible roof operation

### LUXURY

Power-retractable aluminum-alloy roof ■ Mark Levinson<sup>® 2</sup> nine-speaker 240-watt<sup>3</sup> Premium Audio System with Automatic Sound Levelizer (ASL) and single-feed, six-disc CD auto-changer ■ Lexus DVD Navigation System<sup>3</sup> ■ Walnut or light golden bird's-eye maple interior trim and shift knob ■ Leather-trimmed interior ■ Power tilt-and-telescopic steering column with automatic tilt-away ■ Wood- and leather-trimmed steering wheel ■ Multi-adjustable front headrests and power front seats ■ Power lumbar support for front seats ■ Lexus Memory System for power driver's and front passenger's seat (except lumbar), outside mirrors and steering wheel ■ Intuitive Climate Control with lap-level vents, interior air filter, smog sensor and automatic recirculation mode ■ Cruise control ■ Outside temperature gauge ■ Power mast antenna with FM-diversity system ■ Steering-wheel-mounted audio controls ■ Dual-compartment center console with accessory power outlet and mobile phone storage capability ■ HomeLink<sup>®</sup> universal transceiver to operate compatible garage, gate, home lighting and home security systems ■ Power windows with one-touch auto open/close feature ■ Electrochromic (auto-dimming) inside mirror and outside mirrors ■ Power door locks with driver's two-turn unlock feature ■ Multifunction, in-key remote entry system with rolling-code technology ■ Illuminated entry system and scuff plates ■ Interior electronic trunk-lid and fuel-filler door releases ■ Retained accessory power for windows ■ Carpeted floor mats ■ Customized Body Electronics System (C-BEST) to personalize electronic functions ■ Headlamp washers

\*Brake Assist is designed to help the driver take full advantage of the benefits of ABS. It is not a substitute for safe driving practices.

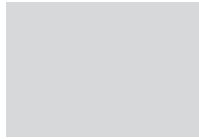
Braking effectiveness also depends on proper brake-system maintenance and tire and road conditions.

<sup>1</sup>Continuous average power, all channels driven, at 0.01% THD; 20 - 20,000 Hz.

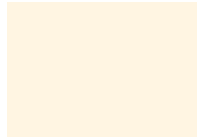
<sup>2,3,4,5,6,7,8</sup> See page 15 for more information.

# 2005 LEXUS SC Colors & Warranty

## EXTERIOR COLORS



**MILLENNIUM SILVER METALLIC**  
Ecru, Saddle or Black Leather



**WHITE GOLD CRYSTAL**  
Ecru, Saddle or Black Leather



**BLACK ONYX**  
Ecru, Saddle or Black Leather



**EGYPTIAN SAND PEARL**  
Ecru or Saddle Leather



**TWILIGHT AMETHYST PEARL**  
Ecru Leather



**ABSOLUTELY RED**  
Ecru, Saddle or Black Leather



**MIDNIGHT PINE PEARL**  
Ecru or Saddle Leather



**INDIGO INK PEARL**  
Ecru or Saddle Leather

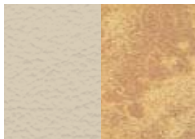
## INTERIOR WOOD AND LEATHER



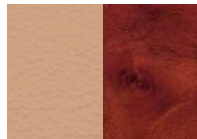
Light Golden Bird's-Eye Maple



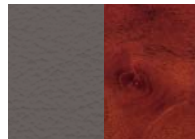
Walnut



Ecru Leather with Light Golden Bird's-Eye Maple



Saddle Leather with Walnut



Black Leather with Walnut

See your Lexus dealer for exact vehicle colors.

## WARRANTY

Four-year/50,000-mile Lexus Limited Warranty. Six-year/70,000-mile Powertrain Warranty. Six-year/unlimited-mileage Corrosion Perforation Warranty. All warranties with zero deductible. See the SC *Owner's Manual Supplement* at your Lexus dealer for details.

## FOOTNOTES & DISCLAIMERS

- When equipped with available run-flat tires.
- Mark Levinson is a registered trademark of Harman International Industries.
- The Lexus DVD Navigation System is designed to assist in locating an address or point of interest. Discrepancies may be encountered between the system and your actual location. Changes in street names, road closures, traffic flow or other road system changes may affect the accuracy of the mapping software. Rely upon your common sense to decide whether or not to follow a specified route. Detailed coverage not available in every city. Optional periodic geographic updates available at an additional cost. See your *Navigation System Owner's Manual* and your Lexus dealer for further instructions.
- Lexus Vehicle Stability Control (VSC) is an electronic system designed to help the driver maintain vehicle control under adverse conditions. It is not a substitute for safe driving practices. Factors including speed, road conditions and driver steering input can all affect whether VSC will be effective in preventing a loss of control. Please see your *Owner's Manual* for further details.
- The Lexus driver's, front passenger's and front seat-mounted side airbags are Supplemental Restraint Systems (SRS). The driver and front passenger airbags are designed to deploy in severe (usually frontal) collisions where the magnitude and duration of the forward deceleration of the vehicle exceed the design threshold level. The side airbags are designed to deploy in certain types of severe side-impact collisions. In all other accidents, the airbags will not deploy. To decrease the risk of injury from a deploying airbag, always wear your seatbelt, sit upright in the middle of the seat, and do not lean against the door. Do not put objects in front of an airbag or around the seatback. Do not use a rearward-facing child seat in any front passenger seat. The force of a deploying airbag SRS may cause serious injury or death. Please see your *Owner's Manual* for further instructions.
- 18 x 8.0-in wheels with low-profile 245/40ZR18 tires are expected to experience greater tire wear than conventional tires. Tire life may be substantially less than 15,000 miles.
- Run-flat tire technology is designed for limited emergency use only. If air pressure is lost, vehicle speed must remain below 55 miles per hour; cornering, braking and accelerating must be done with extreme caution; and the tire should be replaced within 100 miles. Temporary spare is not provided with the run-flat tire option. See your Lexus dealer for details.
- The Lexus Tire Pressure Monitor System alerts the driver when tire pressure is critically low. For optimal tire wear and performance, tire pressure should be checked regularly with a gauge; do not rely solely on the monitor system. See your *Owner's Manual* for details.

Specifications, features, equipment, technical data, performance figures, options, and color and trim are based upon information available at time of posting, are subject to change without notice, are for mainland U.S.A. vehicles and may differ in the state of Hawaii, Puerto Rico, the U.S. Virgin Islands and in other regions.

Some vehicles shown with optional equipment. Optional equipment listed may not be available separately or in all regions. See your Lexus dealer for details. Lexus reminds you to wear seatbelts, secure children in rear seat, obey all traffic laws and drive responsibly.

For more information, call 800-USA-LEXUS (872-5398). To learn more about your financing options, contact your Lexus dealer or call Lexus Financial Services at 800-874-7050.

All photographs appearing in this e-brochure are the copyrighted property of the photographers contracted by or on behalf of Lexus and may not be reproduced in any way whatsoever without prior written permission from both Lexus and the applicable photographer(s) or their authorized agent(s).