



RX

LEXUS | 2013

Three models. One
DEFINITIVE
statement



INTRODUCING THE NEW 2013 RX LINE

As the very first luxury crossover, the Lexus RX invented a language of its own. With its innovative approach to design, safety and utility, the RX interpreted the needs of discerning drivers into a new expression of luxury. For 2013, Lexus continues to evolve the RX, adding the all-new performance-oriented RX F SPORT to a model line that includes the RX 350 and the RX 450h, the latest iteration of the world's first luxury hybrid. And with the new available Enform¹² App Suite,³ the Lexus RX takes information to a new level of seamless connectivity.

RX 350

Luxury and style, meet performance and versatility. The RX 350 features a 270-hp, 3.5-liter V6, dual Variable Valve Timing with intelligence (VVT-i) and a six-speed Electronically Controlled Transmission with intelligence (ECT-i). Available with full-time all-wheel drive.

RX 350 F SPORT

The F SPORT comes to the RX Line. A bolder look inside and out, backed by performance enhancements like an eight-speed Electronically Controlled Transmission with intelligence (ECT-i) and paddle shifters, standard all-wheel drive and suspension tuned for precise response.

RX 450h

The efficiency and low emissions of a high-output electric-drive motor. An Atkinson cycle 3.5-liter V6 and an Electronically controlled Continuously Variable Transmission with intelligence (ECT-i). 295 total system horsepower.⁴ Available with all-wheel drive.⁵

The RX F SPORT. PRECISELY



F SPORT DETAILS

Open the door of the RX 350 F SPORT, and you enter a cabin in which design details amp up the performance attitude. Your eyes scan the special accents, and seating surfaces covered in F SPORT black leather with white perforations and contrasting stitching.



With its 270-hp V6, the RX already had a bit of a performance bent. The F SPORT just twisted it a bit more. F SPORT engineering adds firmer shocks and lateral performance dampers tuned to give the driver more immediate handling feedback.



UNCONVENTIONAL PERFORMANCE

Behind the aggressively styled F SPORT mesh grille is a potent 3.5-liter V6 mated to an eight-speed Electronically Controlled Transmission with intelligence (ECT-i) and paddle shifters that allow you to upshift and downshift with ease. Behind the F SPORT 19-inch alloy wheels⁶ with Dark Graphite finish, the RX suspension system has been tuned to performance specs. And behind the F SPORT name is the inspiration of Fuji Speedway, the legendary racetrack where Lexus engineers pursue higher levels of precision.

One more way it
CONNECTS
with drivers

To help you get the most out of your Lexus, our associates will gladly assist you with pairing your mobile devices and programming your personalized settings.

SEARCH, STREAM, SHOP

The available Lexus Enform^{1,2} App Suite³ uses your compatible smartphone to give you in-vehicle access to your favorite mobile applications. You can connect to Bing,TM iHeartRadio, MovieTickets.com, OpenTable,[®] Pandora,^{®7,8} Yelp[®] and Facebook Places. And with wireless updates, new apps will be added as they become available. Learn more at lexus.com/RX/enform.



REMOTE TOUCH

The available Remote Touch⁹ device sits where your hand naturally rests—just glide it and it functions like a computer mouse. Use it to control available Navigation System¹⁰ functions, climate-control settings, the performance of the available 15-speaker Mark Levinson[®] Audio System¹¹ and the new Lexus Enform^{®12} App Suite³—the most connected information and communication technology available in an automobile.

eDESTINATION

Enter destinations into your available Lexus Navigation System¹⁰—without being anywhere near your RX. Using your computer or smartphone, eDestination lets you save up to 200 destinations and organize them in up to 20 folders. Once your destinations are saved, you can add notes to each destination and send them wirelessly to the Navigation System¹⁰ in your RX.



ADVANCED TECHNOLOGIES

It's not enough for a luxury vehicle to surround its passengers in available leather and wood trim—though the RX does so elegantly. In the new 2013 RX, you'll find advanced technologies that go beyond its state-of-the-art information capabilities. The available Blind Spot Monitor¹² helps detect adjacent vehicles. And the available Heads-up Display is designed to help you stay focused on the road.



The power of
CHANGE
 changes again

POWER, USED WISELY

The gasoline engine on the RXh is able to convert more of the energy generated during combustion into mechanical energy than conventional engines. This innovative system contributes to low emissions and enhanced fuel efficiency. When in ECO mode, fuel efficiency is increased by automatically optimizing multiple systems to consume less energy and regulating the throttle response for more even acceleration.

EXHAUST HEAT-RECOVERY SYSTEM

Exhaust gas is an inevitable byproduct of combustion. The RX 450h, however, captures, cools and reuses it with an Exhaust Gas Recirculation system, reducing emissions and providing best-in-class fuel economy.¹³ A portion of these gasses are used to warm up the engine, significantly shortening—by up to 15 minutes in extreme cold—the time it takes the RX to reach a temperature at which it can function on battery power alone.



THE RX HYBRID

The original RX 450h proved that technology and optimism can change how luxury is perceived. Now, the first luxury hybrid is once again changing the way the world looks at Lexus. For 2013, the redesigned RX 450h projects a more assertive attitude. Just how bold is up to you—a new Sport Appearance Package is available on the RX 450h. With it come many of the visual cues found on our new RX F SPORT, including the F SPORT lower grille and F SPORT wheels. Offering performance to match its F SPORT guise, the RX 450h is the first hybrid vehicle to feature Intelligent Shift Control, a system that can estimate whether you are traveling uphill or downhill and automatically provide the optimal engine response. Or, the driver can manually shift to help provide greater responsiveness and maneuverability coming out of corners.

All-Knowing. All-Conquering.

ALL-WHEEL DRIVE



VEHICLE DYNAMICS INTEGRATED MANAGEMENT (VDIM)

AWD isn't the only traction technology offered on the RX. Utilizing a network of sensors that monitor everything from speed, to steering, to braking, the available Vehicle Dynamics Integrated Management (VDIM)¹² system can anticipate a loss of traction and help correct it before it occurs. All within a fraction of a second.



The RX can even sense if the wheels are braking on different surfaces—a wet road on the left and an icy shoulder on the right, for instance—and add steering torque to either side to help the driver account for the difference. For a demonstration, please visit lexus.com/RX/VDIM.

ACTIVE TORQUE CONTROL AWD

In addition to the standard two-wheel drive versions, the RX 350 and RX 450h are also available as all-wheel drive³ models. On the RX 350 AWD, an Active Torque Control all-wheel drive (AWD)³ system efficiently manages the relationship of the RX to the road. During normal traction conditions, it sends 100% of the engine's power to the front wheels. But if sensors detect a loss of grip, it will automatically reallocate up to 50% of the power from the front wheels to the rear to help maintain traction. It's so advanced, in fact, that it's designed to predict your intended path around a turn and proactively distribute torque to the rear wheels to help keep you on your intended path.

At Lexus, our approach to safety is about more than just airbags¹⁵—though you'll find a class-leading¹⁶ 10 of them on the 2013 RX. It's about pursuing safety from every perspective—before, during and after an accident. Which is why the RX offers 21 Active Safety features, including Smart Stop Technology¹⁷ and the available Blind Spot Monitor.¹² And the available Pre-Collision System¹⁸ uses radar to “sense” the potential of an imminent frontal impact and automatically retract the front seatbelts while preparing Brake Assist¹⁹ to help you stop faster. If an impact does occur, you're protected not only by a 10-airbag¹⁵ system, but active front headrests²⁰ that can move upward and forward in the event of certain types of rear-end collisions to help prevent whiplash.

To make it more secure, first make it
SMARTER



10 AIRBAGS

The RX includes front seat-mounted side airbags¹⁵, driver's and front-passenger's dual-stage front airbags,¹⁵ front and rear roll-sensing side curtain airbags¹⁵ plus a driver's and front passenger's knee airbag¹⁵ as part of the 10 airbag¹⁵ supplemental restraint system.

SAFETY CONNECT®

In case of a collision, breakdown or other emergency on the road, the RX offers the added security of Safety Connect,²¹ Lexus' standard on-board safety and security service. Cellular and GPS technologies embedded in the vehicle help connect drivers to the 24-hour Safety Connect^{1,21} response center.

BLIND SPOT MONITOR

Using radar technology, the available Blind Spot Monitor¹² is designed to detect vehicles positioned or approaching in the adjacent lanes. At speeds above 25 mph, if a vehicle is detected, the driver is notified by an illuminated icon in the outer mirror on the affected side.

OVERVIEW

TYPE	Five-passenger luxury utility vehicle
ENGINE	RX 3.5 L 60° V6, aluminum block and heads
HORSEPOWER AT RPM	270 hp @ 6,200
TORQUE AT RPM	248 lb-ft @ 4,700
EMISSION RATING	Certified Ultra-Low Emission Vehicle (ULEV II)
FUEL REQUIREMENT	Regular unleaded, 87 octane
ENGINE	RXh Atkinson-cycle 3.5 L 60° V6, aluminum block and heads
ELECTRIC-DRIVE MOTORS	Front (FWD) or front and rear (AWD) high-output, permanent-magnet, electric-drive motor(s) with EV mode ²²
TOTAL SYSTEM HORSEPOWER	295 hp ⁴
EMISSION RATING	Certified Super Ultra-Low Emission Vehicle (SULEV II)
FUEL REQUIREMENT	Premium unleaded, 91 octane

PERFORMANCE

	RX	RX F SPORT
0-60 MPH ACCELERATION	7.7 seconds (FWD) ²³ 7.8 seconds (AWD) ²³	7.7 seconds ²³
EPA FUEL ECONOMY ESTIMATES (city/highway/combined)	18/25/21 mpg (FWD) ²⁴ 18/24/20 mpg (AWD) ²⁴	19/25/21 mpg ²⁵
	RXh	
0-60 MPH ACCELERATION	7.8 seconds (FWD) ^{4,23} 7.4 seconds (AWD) ^{4,23}	
EPA FUEL ECONOMY ESTIMATES (city/highway/combined)	32/28/30 mpg (FWD) ²⁴ 30/28/29 mpg (AWD) ²⁴	

DRIVETRAIN

DRIVE WHEELS	Front-wheel drive (RX) Front-wheel drive with Lexus Hybrid Drive (RXh) Active Torque Control all-wheel drive (RX AWD, RX F SPORT)
TRANSMISSION	All-wheel drive with Lexus Hybrid Drive (RXh AWD) Six-speed automatic Electronically Controlled Transmission with intelligence (ECT-i) with Sequential Shift and Snow modes (RX) Eight-speed automatic Electronically Controlled Transmission with intelligence (ECT-i), paddle shifters, Sequential Shift and Snow modes (RX F SPORT) Electronically controlled Continuously Variable Transmission with intelligence (ECVT-i) with Sequential Shift and Snow modes (RXh)

BODY AND DIMENSIONS

HEADROOM
front/rear without moonroof
39.0/37.7 in (992/958 mm)

LEGROOM
front/rear
43.1/36.8 in (1,096/934 mm)

HEIGHT
66.7 in (1,695 mm) (w/o roof rails)
67.7 in (1,720 mm) (w/roof rails)

FUEL-TANK CAPACITY
19.2 gal (72.5 L) (RX)
17.2 gal (65 L) (RXh)

TURNING CIRCLE
38.8 ft (11.8 m)



WIDTH 74.2 in (1,885 mm)



OVERALL LENGTH 187.8 in (4,770 mm)

WHEELS



18-in five-spoke alloy wheels⁶
STANDARD RX and RXh



19-in triple-split-five-spoke alloy wheels⁶
with Superchrome finish
AVAILABLE RX and RXh



19-in split-five-spoke alloy wheels⁶
with Dark Graphite finish
RX F SPORT



19-in split-five-spoke alloy wheels⁶
with Superchrome finish
RX and RXh Sport Appearance Package

For a complete list of vehicle specifications, please visit:
RX: lexus.com/RX/specs RXh: lexus.com/RXh/specs

STANDARD LUXURY FEATURES

LUXURY AND CONVENIENCE

SmartAccess^{26,27} with push-button Start/Stop and touch sensors on exterior front-door handles • Power rear door • Dual-zone automatic climate control with interior air filter • Power windows with one-touch auto open/close feature • Remote-linked opening for windows and available moonroof • Power tilt-and-telescopic steering column • Power door locks • Cruise control

SEATING AND TRIM

Espresso bird's-eye maple or Ebony bird's-eye maple • Leather-trimmed steering wheel and shift knob • Reclining, sliding rear seat (40/20/40-split)

AUDIO

Lexus nine-speaker Premium Sound System with Automatic Sound Levelizer (ASL) and in-dash six-disc CD auto-changer • USB and auxiliary minijack audio input for iPod[®]/iPhone^{®28} and music player integration with audio system

INSTRUMENTATION AND CONTROLS

Electroluminescent instrumentation • Steering-wheel-mounted audio, phone and display controls • Organic Light-Emitting Diode (OLED) multi-information display in gauge cluster • Driving modes with Normal, Sport, ECO and EV (RXh)

SAFETY AND SECURITY FEATURES

ACTIVE SAFETY

Vehicle Dynamics Integrated Management (VDIM)¹⁴ with cutoff switch (RXh, RX F SPORT) • Vehicle Stability Control (VSC)¹⁴ with cutoff switch (RX) • Traction Control (TRAC) • Electronic Controlled Braking (ECB) (RXh) • Four-wheel power-assisted disc brakes with four-sensor, four-channel Anti-lock Braking System (ABS) with Brake Assist¹⁹ and Electronic Brakeforce Distribution (EBD) • LED daytime running lights • Smart Stop Technology¹⁷

PASSIVE SAFETY

Driver's and front passenger's advanced airbag system (SRS)¹⁵ with front passenger's twin-chamber airbag (SRS)¹⁵ • Front and rear seat-mounted side airbags (SRS)¹⁵ • Driver's and front passenger's knee airbags (SRS)¹⁵ • Front and rear Roll-Sensing Curtain Airbags (RSCA) (SRS)¹⁵ • Active front headrests²⁹ • Three-point seatbelts for all seating positions, pre-tensioners with force limiters for front and outboard rear seats

SECURITY

Safety Connect¹²¹ offers Automatic Collision Notification, Stolen Vehicle Location, Emergency Assistance Button (SOS) and Enhanced Roadside Assistance³⁰ services. Subscription required. One-year trial subscription included • Vehicle theft-deterrent and engine-immobilizer system²⁷

OPTION PACKAGES*

PREMIUM PACKAGE

Perforated leather-trimmed interior • Lexus Memory System to control power driver's seat (except lumbar), outside mirrors and steering wheel • Rear-armrest storage compartment with cover • Power tilt-and-slide moonroof with one-touch open/close and sliding sunshade • Power-folding electrochromic (auto-dimming) heated outside mirrors • Roof rails (not available on RXh AWD)^{31,32}

PREMIUM PACKAGE WITH BLIND SPOT MONITOR

Includes all Premium Package equipment plus: Blind Spot Monitor¹²

COMFORT PACKAGE

Heated and ventilated front seats • High-Intensity Discharge (HID) headlamps with dynamic auto-leveling • Rain-sensing intermittent windshield wipers with mist cycle

LUXURY PACKAGE (RX, RXh AWD)

Includes all Premium Package equipment plus: Semi-aniline leather-trimmed interior • Heated wood- and leather-trimmed steering wheel and shift knob • Front-seat power cushion extenders • LED-illuminated front door sills • Headlamp washers • 19 x 7.5-in triple-split-five-spoke alloy wheels with Superchrome finish and 235/55VR19 all-season tires⁵ • Smog-sensing automatic recirculation mode for climate-control system • LED headlamps with dynamic auto-leveling (RXh AWD only)

LUXURY PACKAGE WITH BLIND SPOT MONITOR

Includes all Luxury Package equipment plus: Blind Spot Monitor¹²

NAVIGATION PACKAGE

Navigation System¹⁰ • Remote Touch device⁹ • Voice command • High-resolution color LCD display • Integrated wide-view backup camera³³ • Enhanced Bluetooth[®] technology³⁴ • SMS Text-to-Speech with Reply • Compatible mobile-phone integration • Lexus Enform¹² with Destination Assist and eDestination. Subscription required. One-year trial subscription included • Lexus Enform¹² Application Suite³ with Bing, iHeartRadio, MovieTickets.com, OpenTable, Pandora,⁷⁸ Yelp and Facebook Places. Subscription required. One-year trial subscription included • NavTraffic,^{TM10,35} NavWeather,^{TM10,35} Fuel Prices, Sports and Stocks from SiriusXM.^{10,35} Subscription required. One-year trial subscription included • 12-speaker Lexus Premium Sound System with HD Radio³⁶ • Single-disc DVD/CD player

RX 350 F SPORT (AWD ONLY)

Includes all Premium Package and Comfort Package equipment, plus: All-wheel drive • Eight-speed automatic Electronically Controlled Transmission with intelligence (ECT-i), paddle shifters and Manual mode • F SPORT 19-inch split-five-spoke alloy wheels with Dark Graphite finish and 235/55VR19 all-season tires⁶ • F SPORT front bumper and upper & lower grille inserts • F SPORT suspension tuning with lateral performance dampers • VDIM • Black leather interior trim with white perforations and contrasting stitching • Black headliner • Heavy-duty alternator and radiator • Transmission cooler

SPORT APPEARANCE PACKAGE (RX FWD, RXh)

F SPORT front bumper and lower-grille insert • F SPORT 19-inch split-five-spoke alloy wheels with Superchrome finish and 235/55VR19 all-season tires⁶

REAR-SEAT ENTERTAINMENT/ NAVIGATION SYSTEM PACKAGE

Includes all Navigation Package equipment, plus: High-resolution LED dual-screen DVD Rear-Seat Entertainment System (RSES)³⁷ • Single-disc DVD/CD player • Wireless headphones³⁸ • Audio/video inputs • Two-prong 120-volt AC power outlet

LEXUS DISPLAY AUDIO/ BACKUP CAMERA PACKAGE

7.0-inch color LCD multi-information display • Backup camera³³ • Center-console controller • Lexus 12-Speaker Premium Sound System • Single-disc CD player • HD Radio^{TM36} • Digital signal technology including Live Ambience for improved audio performance • SMS Text-to-Speech with Reply

TOWING PREP PACKAGE (RX, RXh AWD)

Heavy-duty alternator and radiator • Transmission cooler

OPTIONS AND ACCESSORIES*

Mark Levinson[®] 15-speaker 330-watt @ less than 0.1% THD, 20-20,000 Hz³⁹ Premium Surround Sound Audio SystemTM with Automatic Sound Levelizer (ASL), 7.1 architecture and single-disc DVD/CD player featuring DVD-audio and DVD-video playback • 12-speaker Lexus Premium Sound System with single-disc DVD/CD player • Heads-up Display • Wood- and leather-trimmed steering wheel and shift knob • Heated and ventilated front seats with perforated leather trim • High-Intensity Discharge (HID) headlamps with dynamic auto-leveling • LED headlamps with dynamic auto-leveling (RXh AWD) • 19-inch triple-split-five-spoke alloy wheels with 235/55VR19 all-season tires⁵ • Intuitive Parking Assist • Pre-Collision System (PCS)¹⁸ with Dynamic Radar Cruise Control⁴⁰ • Two-prong 120-volt AC power outlet

Alloy wheel locks • All-weather cargo mat • All-weather floor mats⁴¹ • Ashtray cup • Body side moldings • Cargo net – envelope • Cargo net – spider • Carpet cargo mat • Door edge guards • First aid kit • Glass breakage sensor • Key glove • Mudguards • Paint protection film⁴² • Remote engine starter²⁷ • Roof rack cross bars (not available on RXh FWD)^{43,31} • Towing equipment – ball mount (not available on RXh FWD, RX F SPORT)^{44,45} • Towing equipment – towing receiver hitch (not available on RXh FWD, RX F SPORT)^{44,45} • Towing equipment – trailer ball (not available on RXh FWD, RX F SPORT)^{44,45} • Wireless headphones³⁸

*Please see back cover for more information regarding options/packages.

EXTERIOR COLORS



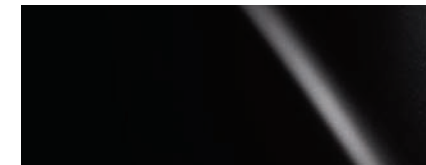
SILVER LINING METALLIC



STARFIRE PEARL



NEBULA GRAY PEARL



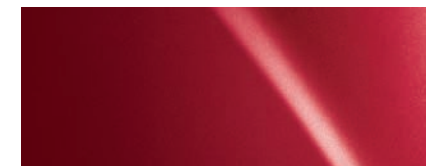
STARGAZER BLACK*



OBSIDIAN



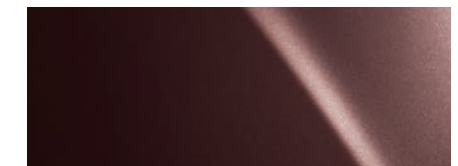
DEEP SEA MICA



CLARET MICA

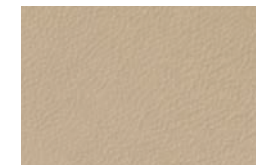


SATIN CASHMERE METALLIC*

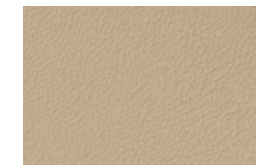


FIRE AGATE PEARL*

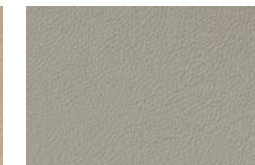
INTERIOR COLORS



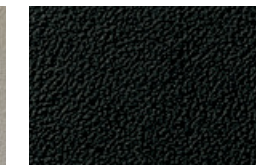
SADDLE TAN LEATHER*



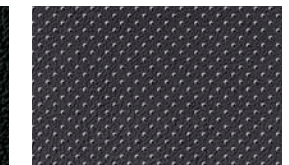
PARCHMENT LEATHER*



LIGHT GRAY LEATHER*

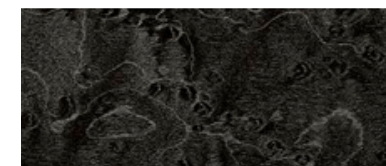


BLACK LEATHER*

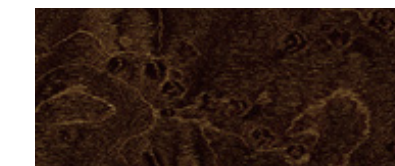


BLACK LEATHER WITH WHITE PERFORATIONS

INTERIOR TRIM



EBONY BIRD'S-EYE MAPLE



ESPRESSO BIRD'S-EYE MAPLE*

COLOR AVAILABILITY

	SILVER LINING METALLIC	STARFIRE PEARL	NEBULA GRAY PEARL	STARGAZER BLACK	OBSIDIAN	DEEP SEA MICA	CLARET MICA	SATIN CASHMERE METALLIC	FIRE AGATE PEARL	EBONY BIRD'S-EYE MAPLE	ESPRESSO BIRD'S-EYE MAPLE*
SADDLE TAN LEATHER*	•	•	•	•	•	•	•	•	•		•
PARCHMENT LEATHER*		•	•	•	•	•	•	•	•		•
LIGHT GRAY LEATHER*	•	•	•	•	•	•	•			•	
BLACK LEATHER*	•	•	•	•	•	•	•	•	•	•	
BLACK LEATHER WITH WHITE PERFORATIONS	•	•	•		•	•	•			•	
LIGHT GRAY FABRIC*	•	•				•			•	•	
INTERIOR COLOR	EXTERIOR COLOR									INTERIOR TRIM	

*Not available on RX F SPORT.

WARRANTY

Four-year/50,000-mile Lexus Limited Warranty. Six-year/70,000-mile Powertrain Warranty. Six-year/unlimited-mileage Corrosion Perforation Warranty. All warranties with zero deductible. See the *RX Warranty and Services Guide* at your Lexus dealer for details.

1. Contact with the Lexus Enform and/or Safety Connect response center is dependent upon the telematics device being in operative condition, cellular connection availability, navigation map data and GPS satellite signal reception, which can limit the ability to reach the response center or receive emergency support. Enrollment and Telematics Subscription Service Agreement required. One-year trial subscription available only with new vehicle purchase of Lexus Enform- and Safety Connect-equipped vehicles. Additional subscription terms available; charges vary by subscription term selected. **2.** Lexus Enform premium services Destination Assist and eDestination will function in the contiguous United States. These services may also function in Hawaii and limited areas of Alaska for vehicles that contain map data for those states. They will not function in Canada or in other countries outside the United States. **3.** Always be sure to obey traffic regulations, maintain awareness of your surroundings and all road and traffic conditions. Select Enform apps use a large amount of data and you are responsible for all data charges. Apps and services vary by phone and carrier. Not all apps and data services are available initially. Apps identified by TM or [®] are trademarks or registered trademarks of their respective companies and cannot be used without permission. See lexus.com/enform for the latest information regarding apps and service. The *Bluetooth* word mark is a registered trademark of the Bluetooth SIG. Features and capabilities vary by phone. **4.** Ratings achieved using the required premium unleaded gasoline with an octane rating of 91 or higher. If premium fuel is not used, performance will decrease. **5.** The RX 450h is not designed to be driven off-road. **6.** 18-in or 19-in performance tires are expected to experience greater tire wear than conventional tires. Tire life may be substantially less than 15,000 miles, depending upon driving conditions. **7.** Always be sure to obey traffic regulations, maintain awareness of your surroundings and all road and traffic conditions. Select apps use a large amount of data and you are responsible for all data charges. Apps and services vary by phone and carrier. **8.** Daily use of Pandora or iHeartRadio may have an impact on your cellular data plan. It is estimated that one hour of streaming Pandora or iHeartRadio consumes roughly 14 to 27MB of cellular data. The other third-party applications, Bing, MovieTickets.com and OpenTable, are expected to consume a negligible amount of data. You can take a look at the data calculators provided on your cellular carrier's website or speak with your wireless carrier to understand what data plans would fit you the best. PANDORA, the PANDORA logo, and the Pandora trade dress are trademarks or registered trademarks of Pandora Media, Inc., used with permission. **9.** Be sure to obey traffic regulations and maintain awareness of road and traffic conditions at all times. **10.** Availability and accuracy of the information provided by the Navigation System or any SiriusXM services mentioned (if installed) are dependent upon many factors. Use common sense when relying on information provided. Services not available in every city or roadway. Periodic Navigation updates available at additional cost. Please see your *Navigation System Owner's Manual* or contact SiriusXM for details. **11.** Mark Levinson is a registered trademark of Harman International Industries, Inc. **12.** Do not rely exclusively on the Blind Spot Monitor to determine if a lane change is safe. Always look over your shoulder and use your turn signal before changing lanes. There are several limitations to the function, detection, range and clarity of the monitor. For a complete list of limitations and directions regarding use of the monitor, see *Owner's Manual*. **13.** 2012 RX 450h versus 2011 competitors; based on EPA combined mpg rating for Luxury Midsize SUVs. Actual mileage will vary. **14.** Vehicle Stability Control (VSC) and Vehicle Dynamics Integrated Management (VDIM) are electronic systems designed to help the driver maintain vehicle control under adverse conditions. They are not substitutes for safe driving practices. Factors including speed, road conditions and driver steering input can all affect whether VSC and VDIM will be effective in preventing a loss of control. See *Owner's Manual* for details. **15.** All the airbag (AB) systems are Supplemental Restraint Systems. All ABs (if installed) are designed to inflate only under certain conditions and in certain types of severe collisions: frontal and knee ABs typically inflate in frontal collisions; side and side curtain ABs in side collisions; Roll-Sensing Curtain ABs at a severe tilt degree, roll or lateral G-force. In all other accidents, the ABs will not inflate. To decrease the risk of injury from an inflating AB, always wear seatbelts, sit upright in the middle of the seat as far back as possible and do not lean against the door. Do not put objects in front of an AB or around the seatback. Do not use a rearward-facing child seat in any front passenger seat. The force of an inflating AB may cause serious injury or death. Please see your *Owner's Manual* for further information/warnings. **16.** 2012 RX vs. 2011 competitors based on Luxury Midsize SUVs. **17.** Smart Stop Technology operates only in the event of certain simultaneous brake and gas pedal applications. When engaged, the system will reduce engine power to help the brakes bring the vehicle to a stop. Factors including speed, road conditions and driver input can all impact stopping distance. Smart Stop Technology is not a substitute for safe and attentive driving and does not guarantee instant stopping. See *Owner's Manual* for further details. **18.** The Pre-Collision System is designed to help reduce the crash speed and damage in certain frontal collisions only. It is not a collision-avoidance system and is not a substitute for safe and attentive driving. System effectiveness depends on many factors, such as speed, driver input and road conditions. See *Owner's Manual* for further information. **19.** Brake Assist is designed to help the driver take full advantage of the benefits of ABS. It is not a substitute for safe driving practices. Braking effectiveness also depends on proper brake-system maintenance, tire and road conditions. **20.** Active front headrests can help reduce the extent of whiplash in certain types of rear-end collisions. **21.** The Safety Connect services Automatic Collision Notification, Emergency Assistance and Stolen Vehicle Location will function in the United States, including Hawaii and Alaska, and in Canada. Enhanced Roadside Assistance will function in the United States (except for Hawaii) and in Canada. No Safety Connect services will function outside of the United States in countries other than Canada. **22.** CAUTION! When driving a hybrid vehicle, pay special attention to the area around the vehicle. Because there is little vehicle noise in electric-only mode, pedestrians, people riding bicycles or other people and vehicles in the area may not be aware of the vehicle starting off or approaching them, so take extra care while driving. **23.** Performance figures are for comparison only and were obtained with prototype vehicles by professional drivers using special safety equipment and procedures. Do not attempt. **24.** EPA MPG Estimates. Actual mileage will vary. **25.** Preliminary mileage estimates determined by Lexus. EPA mileage estimates not available at time of posting. Actual mileage will vary. **26.** The SmartAccess system may interfere with some pacemakers or cardiac defibrillators. If you have one of these medical devices, please talk to your doctor to see if you should deactivate this system. **27.** The engine immobilizer is a state-of-the-art anti-theft system. When you insert your key into the ignition switch or bring a SmartAccess fob into the vehicle, the key transmits an electronic code to the vehicle. The engine will only start if the code in the transponder chip inside the key or SmartAccess fob matches the code in the vehicle's immobilizer. Because the transponder chip is embedded in the key or SmartAccess fob, it can be costly to replace. If you lose a key or SmartAccess fob, your Lexus dealer can help. Alternatively, you can find a qualified independent locksmith to perform high-security key services by consulting your local *Yellow Pages* or by contacting www.aloa.org. **28.** iPod and iPhone are registered trademarks of Apple Inc. All rights reserved. **29.** Active front headrests can help reduce the severity of whiplash in certain types of rear-end collisions. **30.** Coverage only available in the continental U.S. and Canada. Please see your Lexus dealer for details. **31.** Roof rack capacity is 165 lb. See *Owner's Manual* for details. **32.** Accessory roof rack with rails is not recommended for luggage. **33.** The backup camera does not provide a comprehensive view of the rear area of the vehicle. You should also look around outside your vehicle and use your mirrors to confirm rearward clearance. Cold weather may limit effectiveness and view may become cloudy. **34.** Bluetooth technology phones listed on lexus.com have been tested for compatibility with Lexus vehicles. Performance will vary based on phone software version, coverage and your wireless carrier. Phones are warranted by their manufacturer, not Lexus. The *Bluetooth* word mark and logos are registered trademarks owned by Bluetooth SIG, Inc. and any use of such marks by Lexus is under license. Other trademarks and trade names are those of their respective owners. **35.** SiriusXM services require a subscription after trial period. Subscriptions governed by SiriusXM Customer Agreement available at siriusxm.com. If you decide to continue your SiriusXM service at the end of your complimentary trial, the plan you choose will automatically renew and bill at then-current rates unless you call 1-800-967-2346 to cancel. Fees and programming subject to change. Available only to those at least 18 years of age in the 48 contiguous United States and DC. **36.** HD Radio™ Technology manufactured under license from iBiquity Digital Corporation U.S. and Foreign Patents. HD Radio™ and the HD, HD Radio, and "Arc" logos are proprietary trademarks of iBiquity Digital Corp. **37.** A single-disc DVD player is standard on vehicles equipped with the dual-screen Rear-Seat Entertainment System. A separate DVD player or game system utilizing the center console's video/audio inputs is required in order to use the split-screen function. **38.** Headphones are for passenger use only. Do not use while operating vehicle. **39.** Continuous average power, all channels driven, at less than 0.1% THD; 20-20,000 Hz. **40.** Dynamic Radar Cruise Control is designed to assist the driver and is not a substitute for safe and attentive driving practices. See *Owner's Manual* for details. **41.** To avoid potential interference with pedal operation, do not install a floor mat on top of an existing floor mat, and each mat must be secured with a quarter-turn fastener. This floor mat was designed specifically for use in this model and model year vehicle and SHOULD NOT be used in any other vehicle. **42.** Lexus Genuine Accessory Warranty will only apply when the installation is performed by a trained Lexus-approved installer. If the film is installed by anyone else, the Lexus "Parts Only" warranty—12 months—will be applicable instead. Please see dealer for details. **43.** Roof rack with cross bars is not recommended for luggage. **44.** Before towing, confirm your vehicle and trailer are compatible, hooked up and loaded properly and that you have any necessary additional equipment. Do not exceed any Weight Ratings and follow all instructions in your *Owner's Manual*. The maximum you can tow depends on the total weight of any cargo, occupants and available equipment. **45.** Please consult your Lexus dealer or *Owner's Manual* for towing and load specifications.

*Lexus strives to build vehicles to match customer interest, and thus they typically are built with popular options and option packages. Not all options/packages are available separately, and some may not be available in all regions of the country. See lexus.com for information about options/packages commonly available in your area. If you would prefer a vehicle without any or with different options, contact your dealer to check for current availability or the possibility of placing a special order. Specifications, features, equipment, technical data, performance figures, options, and color and trim are based upon information available at time of printing, are subject to change without notice, and are for mainland U.S.A. vehicles only. Some vehicles shown with available equipment. See your Lexus dealer for details. Lexus reminds you to wear seatbelts, secure children in rear seat, obey all traffic laws and drive responsibly. For more information, call 800-USA-LEXUS (872-5398) or visit lexus.com. To learn more about your financing options, contact your Lexus dealer or call Lexus Financial Services at 800-874-7050.

