

2019 MKZ





# THE LUXURY EXPERIENCE REDEFINED

Time is the ultimate luxury, which is why Lincoln is dedicated to helping you spend more of yours the way you prefer. As an MKZ driver, you'll be able to access remote vehicle features, contact a Lincoln Concierge, as well as find and pre-pay for parking in select cities, quickly and easily with the Lincoln Way™ app on your mobile device.<sup>1</sup> With complimentary Lincoln Pickup & Delivery,<sup>2</sup> you can continue seamlessly through your day while we service your vehicle.<sup>2</sup> Plus, Lincoln is working with CLEAR<sup>®</sup> to help you soar through lines at the airport.<sup>3</sup> It's all part of an exclusive collection of services we call the Lincoln Way – benefits designed to help uncomplicate your life and make each day more effortless.

As it senses your approach, the 2019 MKZ invites you in with a graceful illumination sequence. Its exterior signature LED lamps fade on, while luminous welcome mats appear on the ground. LED lamps in the door handle pockets glow with an intensity that's fine-tuned to the exterior color. After you've closed the door and relaxed into your Comfort seat, MKZ deploys the autofold<sup>4</sup> sideview mirrors with memory to your personalized settings. It's been expecting you.

<sup>1</sup>Lincoln Way app is available via download and compatible with select smartphone platforms. Learn more at [lincolnway.com](http://lincolnway.com). Message and data rates may apply. <sup>2</sup>Lincoln Pickup & Delivery is valid for owners of 2017 or newer model-year Lincoln vehicles. Service available for retail and warranty repairs. Mileage limitations may apply. See dealer for details. <sup>3</sup>CLEAR is currently available to U.S. citizens and legal permanent residents with valid photo I.D. CLEAR Program eligibility for new retail purchases of 2018 and newer model-year Lincoln vehicles (12 months on Lincoln Black Label models; 6 months on all other Lincoln models). Full CLEAR enrollment, including biometrics, required to be completed within 120 days of vehicle delivery. <sup>4</sup>Available feature.





#### DISCOVER YOUR OASIS

As you settle in to this elegant space, take a moment to open the fully retractable panoramic glass roof,<sup>1</sup> which features the largest opening among sedans.<sup>2</sup> You'll enjoy it in every season from the comfort of your heated and cooled<sup>1</sup> front seats trimmed in luxurious Bridge of Weir™ leather.<sup>1</sup> MKZ is also the only vehicle in its class<sup>3</sup> that can help you melt away stress and muscle fatigue with the Active Motion® massage functionality of its multicontour front seats.<sup>1</sup> Heated rear outboard seats<sup>1</sup> comfort your passengers. Plus, they can charge their devices with the 110V power outlet<sup>1</sup> and 2 USB ports<sup>1</sup> conveniently located on the back of the floor console.

#### ENHANCE YOUR SERENITY

For a luxurious grip on your driving, the heated<sup>1</sup> steering wheel is wrapped in hand-stitched Wollsdorf leather. To help soften the glaring rays of the sun, a power rear-window sunshade<sup>1</sup> is easily deployed from the driver's seat. MKZ can even help you conquer inclement weather with a windshield wiper de-icer<sup>4</sup> and rain-sensing windshield wipers. The acoustic experience stands out as well. From its aerodynamic sideview mirrors helping to deflect wind noise, to the multilayer door seals and sound-absorbing materials throughout its body, MKZ is designed to help keep road noise at bay. Plus, Active Noise Control helps refine engine sounds to enhance the cabin's ambience. Peace and quiet await – inside MKZ.



<sup>1</sup>Available feature. <sup>2</sup>Based on effective roof opening as measured by Webasto. <sup>3</sup>Class is Luxury Midsize Sedans based on Lincoln segmentation. <sup>4</sup>Standard on turbocharged engines only.





# SPIRITED IN ITS RESPONSE



Twin-Turbocharged 3.0-liter V6<sup>1</sup>

400 hp<sup>2</sup> (AWD)/400 lb.-ft. torque<sup>2</sup>



## POWERFULLY POISED

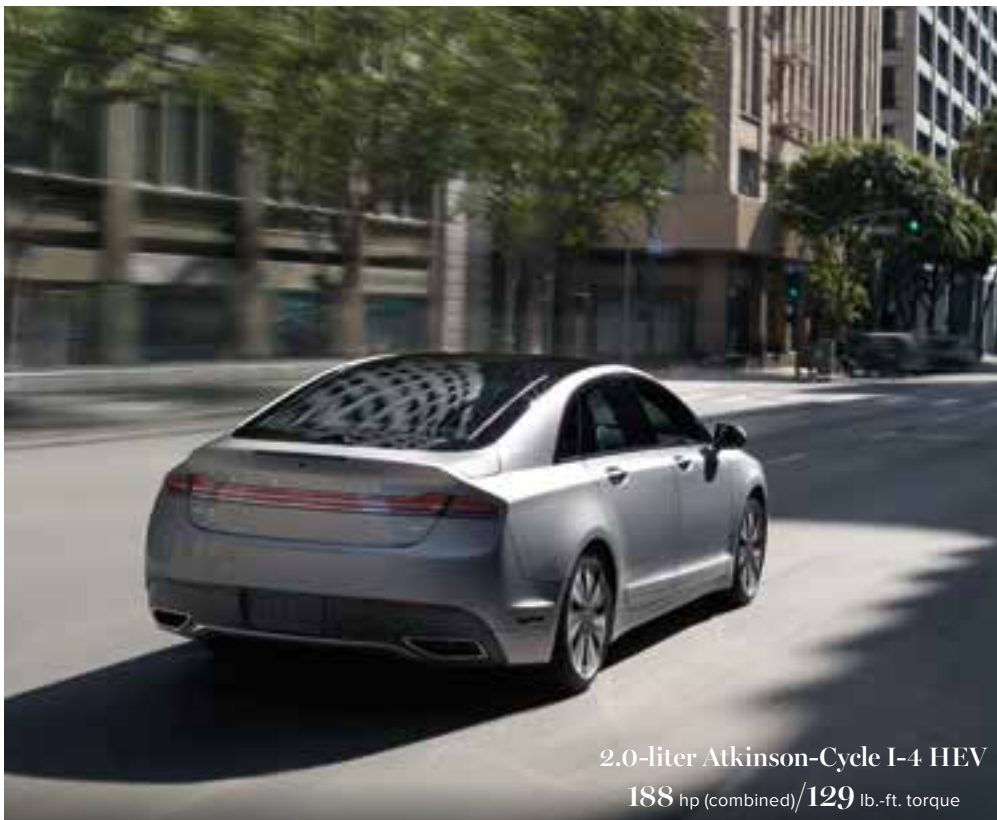
MKZ is a driver's car with the desire to excite, and the ability to deliver. Equipped with one of the most powerful engines Lincoln has ever produced – the Twin-Turbocharged 3.0-liter V6<sup>1</sup> – MKZ Reserve II models put an impressive amount of horsepower and torque at your disposal. When the mood strikes, you can take control of the 6-speed SelectShift<sup>®</sup> automatic transmission with just a tap of the steering wheel-mounted paddle shifters.

## CORNERS CONFIDENTLY

Combine the 3.0-liter with Intelligent all-wheel drive (AWD);<sup>1</sup> and you'll also get a sport-tuned suspension and Dynamic Torque Vectoring. This combination of technologies enables MKZ to send up to 100% of the available rear-axle torque to the outside rear wheel while cornering for a smooth and seamless driving experience. Coupled with the 3.0-liter's 400 horsepower<sup>2</sup> and 400 lb.-ft. of torque,<sup>2</sup> they provide a thrilling ride.

<sup>1</sup>Available feature. <sup>2</sup>Horsepower and torque ratings achieved with 93-octane fuel when equipped with optional AWD.





2.0-liter Atkinson-Cycle I-4 HEV  
188 hp (combined)/129 lb.-ft. torque



Turbocharged 2.0-liter I-4  
245 hp<sup>1</sup>/275 lb.-ft. torque<sup>1</sup>

**GLIDE EFFORTLESSLY**

Imagine yourself gliding along, calmly in command. MKZ can take you there, courtesy of its Lincoln Drive Control featuring Adaptive Suspension, which helps isolate your vehicle from road imperfections. To personalize your ride, explore each of the 3 drive modes: Comfort, Normal and Sport. With each of them, Electric Power-Assisted Steering (EPAS) provides steering response and feedback that help you feel confident behind the wheel.

**WITH EXHILARATING EFFICIENCY**

Get the kind of performance you might expect from a V6, with the Turbocharged 2.0-liter I-4 on MKZ. Twin-scroll turbocharging helps it produce abundant horsepower and torque on command, while direct fuel injection and twin-independent variable camshaft timing (Ti-VCT) contribute to its efficiency. Equipped with the 2.0-liter, MKZ has an EPA-estimated rating of 31 hwy mpg.<sup>2</sup> This standard engine is paired with the 6-speed SelectShift<sup>®</sup> automatic transmission and your choice of front-wheel drive or Intelligent AWD.<sup>3</sup>

**HYBRID REWARDS AT NO EXTRA CHARGE**

The only hybrid in its class<sup>4</sup> with the same starting price as its gas-powered counterpart, MKZ Hybrid has a best-in-class EPA-estimated rating of 42 city mpg.<sup>5</sup> It can travel in purely electric mode at speeds up to 85 mph, and switches seamlessly between the Atkinson-cycle gas engine and an electric traction motor as needed. It also charges its own lithium-ion battery – no need to plug it in. To help maximize efficiency, the Regenerative Braking System can capture up to 90% of the brake energy that would normally be lost and repurpose it as power.<sup>6</sup> Plus, a SmartGauge<sup>®</sup> instrument cluster with EcoGuide helps you drive more efficiently.

**ELEVATED BY DESIGN**

To give your vehicle standout looks, the MKZ Reserve Plus Package features a Light Magnetic upper grille and adds uniquely styled 19" wheels. With this package, you'll also enjoy racing-inspired aluminum brake and accelerator pedal covers, a heated steering wheel, the single-panel power moonroof and more.

MORE INSPIRING  
WAYS TO MOVE

<sup>1</sup>Horsepower and torque ratings achieved with 93-octane fuel. <sup>2</sup>EPA-estimated rating of 20 city/31 hwy/24 combined mpg, 2.0-liter FWD. Actual mileage will vary. <sup>3</sup>Available feature. Turbocharged engines only. <sup>4</sup>Class is Luxury Midsize Hybrid Sedans based on Lincoln segmentation. Excluding Plug-In Hybrid vehicles. <sup>5</sup>EPA-estimated rating of 42 city/39 hwy/41 combined mpg, 2.0-liter HEV. Actual mileage will vary. <sup>6</sup>Results may vary depending on driving habits.





### VOICE-ACTIVATED SIMPLICITY

SYNC 3 makes it easy to listen to your favorite music, handle phone calls and more, while you're on the go.<sup>1</sup> It all works through simple voice commands and the controls on your steering wheel. The system also includes Apple CarPlay™ compatibility<sup>2</sup> and Android Auto™ compatibility.<sup>2</sup>

SYNC 3 AppLink®<sup>3</sup> gives you voice control of compatible mobile apps on your connected phone, too. You can use it with the Waze™ community-based traffic and navigation app<sup>3</sup> on your iPhone® Plus, MKZ now works with Amazon Alexa in 2 convenient ways. While inside the vehicle, you can ask Alexa to play music, listen to audiobooks, check the weather, control smart home devices and much more, through the Lincoln+Alexa app.<sup>4</sup> While at home, you can use the Lincoln Way Alexa Skill<sup>4</sup> on your Alexa enabled device to remotely start your vehicle and climate control system, lock and unlock the doors, and more.

### ((SiriusXM))

SiriusXM® gives you music, sports, comedy, news and more – in your MKZ and on the go with a 6-month All Access trial subscription.<sup>5</sup> Plus, you'll enjoy a 6-year prepaid subscription<sup>5</sup> to SiriusXM Traffic and Travel Link® services – the longest of any automobile manufacturer<sup>6</sup> – with the Voice-Activated Touchscreen Navigation System.<sup>7</sup> You can use it to check fuel prices and station locations, taking advantage of all the latest traffic and travel information, along with vivid 3-D maps and pinch-to-zoom capability, on the large touchscreen within easy reach.



### EXCLUSIVE AUDIO

Lincoln is the only automaker to offer Revel® and Revel Ultima® audio systems.<sup>7</sup> They're expertly engineered to deliver a level of precision and musical accuracy you won't just hear – you'll feel. It's as if you're seated in the "Audience" or up "On Stage" when using the personalized listening modes. Outstanding, multi-dimensional sound in every seat is courtesy of advanced cabin correction tuning, QuantumLogic® Surround sound technology, and Revel Waveguides. Revel Ultima features 20 speakers and patented Clari-Fi™ music restoration technology that enhances satellite radio, streaming services, MP3s and other digital sources – for clear, crisp, wide, dynamic sound.

### QUICK STREAMING

Passengers can surf the web, stream movies and music, and more while you're driving, and up to 50' away from the vehicle when it's parked, using Lincoln Connect.™<sup>8</sup> It's an integrated 4G LTE Wi-Fi hotspot that can host up to 10 devices at a time. For help making the most of this, or any other MKZ feature, remember your Lincoln Concierge is available 24/7.

<sup>1</sup>Don't drive while distracted. Use voice-operated systems when possible; don't use handheld devices while driving. Some features may be locked out while the vehicle is in gear. Not all features are compatible with all phones. <sup>2</sup>Requires phone with active data service and compatible software. SYNC 3 does not control 3rd-party products while in use. 3rd parties are solely responsible for their respective functionality. <sup>3</sup>Commands may vary by phone and AppLink software. <sup>4</sup>Certain Alexa functionality is dependent on smart phone and home technology. <sup>5</sup>After your trial period ends, SiriusXM audio and data services each require a subscription sold separately, or as a package, by Sirius XM Radio Inc. See SiriusXM Customer Agreement for complete terms at [www.siriusxm.com](http://www.siriusxm.com). All fees and programming subject to change. Trial subscriptions not available in AK and HI. <sup>6</sup>Source: April 2018 analysis of satellite data service offers by SiriusXM to automobile manufacturers in the U.S.A. <sup>7</sup>Available feature. <sup>8</sup>See footnote 1 on the page titled Standard Features, and your Lincoln Dealer for details.

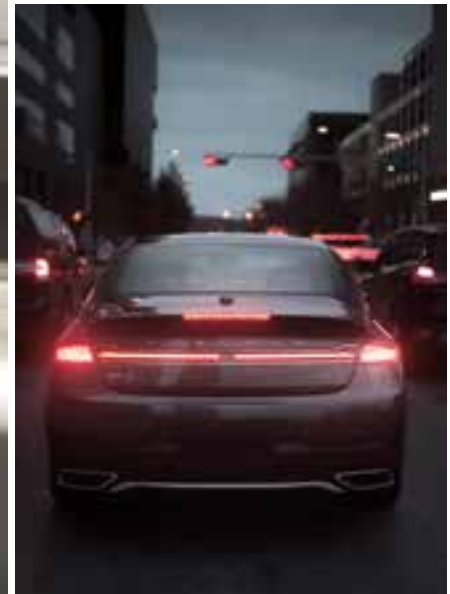
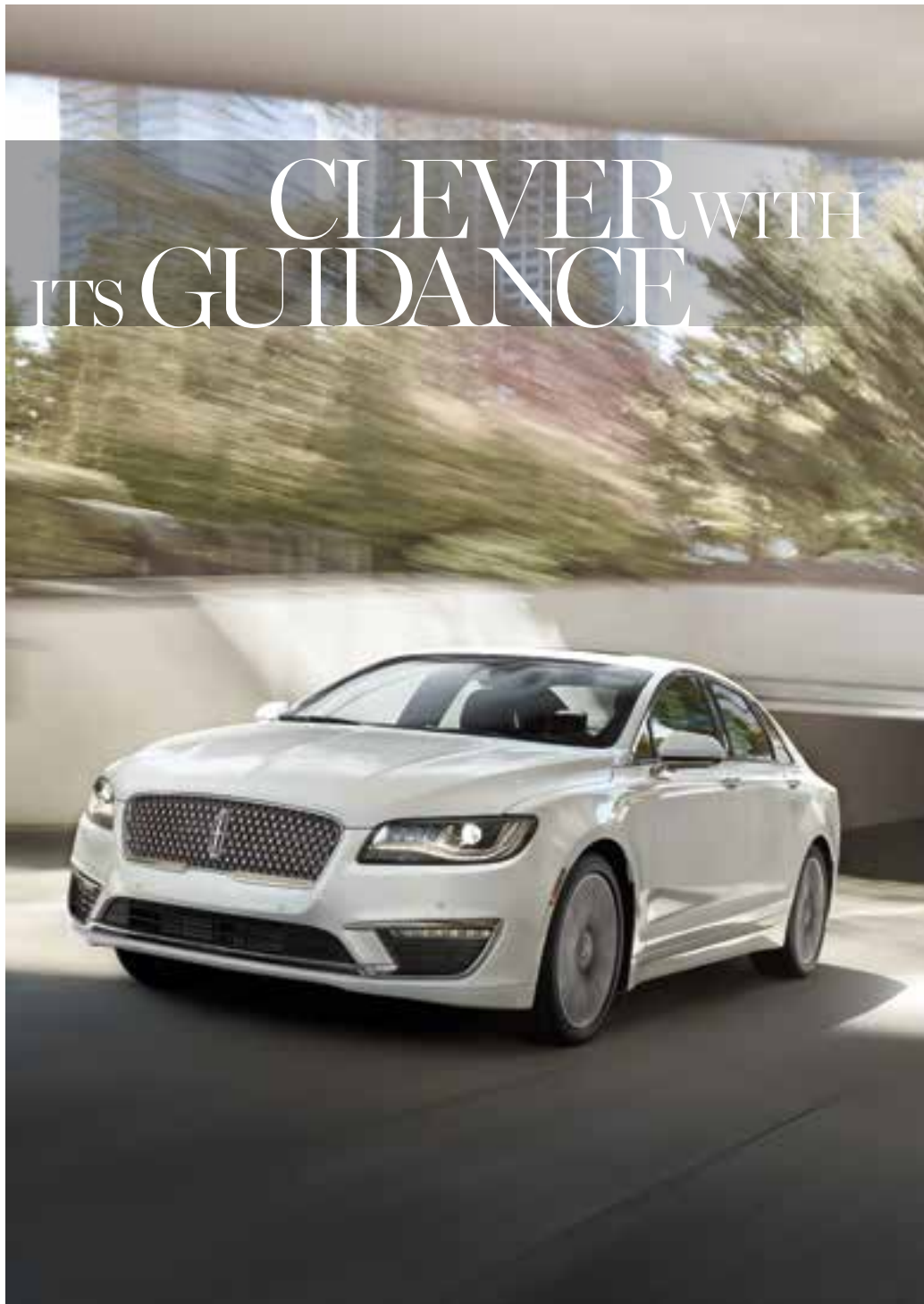




# CLEVER WITH ITS GUIDANCE

Introducing the most comprehensive standard driver-assist technology collection Lincoln has ever offered: Lincoln Co-Pilot360™<sup>1</sup>

These smart features utilize a network of radar sensors and sophisticated cameras to help guide you through various scenarios. From backing out of a driveway or parking spot onto a busy street, to dealing with the fatigue of a long trip, MKZ can help ease your drive.



<sup>1</sup>Driver-assist features are supplemental and do not replace the driver's attention, judgment and need to control the vehicle.



Standard Lincoln Co-Pilot360™ features:<sup>1</sup>

**BLIND SPOT DETECTION WITH CROSS-TRAFFIC ALERT**

Helps warn of vehicles detected in blind spots while going forward and when slowly backing up

**PRE-COLLISION ASSIST WITH AUTOMATIC EMERGENCY BRAKING (AEB)<sup>2</sup>**

Also features Pedestrian Detection

**LANE-KEEPING SYSTEM WITH DRIVER ALERT**

Can help alert you if you start to drift out of your lane<sup>3</sup>

**REAR VIEW CAMERA**

Displays what's behind the vehicle when in Reverse

**AUTO HIGH-BEAM HEADLAMPS**

Can help increase your forward visibility

MKZ Reserve I adds:<sup>1,4</sup>

**ADAPTIVE CRUISE CONTROL WITH STOP-AND-GO**

Helps while highway cruising or in lower-speed traffic

MKZ Reserve II adds:<sup>1</sup>

**ENHANCED ACTIVE PARK ASSIST**

Helps you parallel park and back into perpendicular spots

**FORWARD SENSING SYSTEM**

Audible guidance for low-speed maneuvers



<sup>1</sup>Driver-assist features are supplemental and do not replace the driver's attention, judgment and need to control the vehicle. <sup>2</sup>Pre-Collision Assist with Automatic Emergency Braking (AEB) can detect pedestrians, but not in all conditions and does not replace safe driving. See owner's manual for system limitations. <sup>3</sup>Lane-Keeping System does not control steering. <sup>4</sup>Standard on MKZ Hybrid.







# THE LINCOLN WAY

LINCOLN

## PICKUP & DELIVERY

When it's time for service, you can simply schedule a Lincoln Pickup & Delivery™ appointment with the Lincoln Way™ app<sup>1</sup> or by phone. We'll handle the rest. We'll pick up your vehicle and deliver it back to you when service is complete.<sup>2</sup> In between, we'll provide a complimentary Lincoln loaner<sup>2</sup> – so your time remains distinctly yours. Plus, we'll return your Lincoln washed and ready for your next journey.

## LINCOLN & CLEAR

Together, we're helping you put travel stress on standby. CLEAR® biometric technology allows members to bypass security lines at 30+ of the busiest airports and sports stadiums across the nation, getting them through security in about 5 minutes or less. As a 2019 Lincoln MKZ owner, you and your spouse or significant other can enjoy a 6-month complimentary CLEAR membership.<sup>3</sup> Take your first step around the line by redeeming your Lincoln benefits with CLEAR.

## LINCOLN WAY APP

Downloading the Lincoln Way app<sup>1</sup> to your mobile device makes it easy to connect with us. The app lets you schedule Lincoln Pickup & Delivery, find fuel and compare prices, and even find, reserve and pre-pay for parking in select cities. Use it to contact a Lincoln Concierge, securely manage your Lincoln Automotive Financial Services account, and more. Lincoln Connect™<sup>4</sup> also works with the app to let you locate your vehicle, start it, and lock or unlock its doors from virtually anywhere. Combine it with the app and the Lincoln Way Alexa Skill<sup>5</sup> to remotely start your vehicle, and more, simply by speaking to your Amazon Alexa enabled device.

## LINCOLN CONCIERGE

You have a personal connection to the latest information about Lincoln vehicles, services and ownership benefits. Simply choose how you'd like to connect, and a highly trained Lincoln Concierge team member will help you explore Lincoln in the way that suits you best. Chat online at Lincoln.com. Reach us through the Lincoln Way app<sup>1</sup> Or call (800) 521-4140, anytime of the day or night.

<sup>1</sup>Available via download and compatible with select smartphone platforms. Learn more at [lincolnway.com](http://lincolnway.com). Message and data rates may apply. <sup>2</sup>Lincoln Pickup & Delivery is valid for owners of 2017 or newer model-year Lincoln vehicles. Service available for retail and warranty repairs. Mileage limitations may apply. See dealer for details. <sup>3</sup>CLEAR is currently available to U.S. citizens and legal permanent residents with valid photo I.D. CLEAR Program eligibility for new retail purchases of 2018 and newer model-year Lincoln vehicles (12 months on Lincoln Black Label models; 6 months on all other Lincoln models). Full CLEAR enrollment, including biometrics, required to be completed within 120 days of vehicle delivery. <sup>4</sup>See footnote 1 on next page titled Standard Features, and your Lincoln Dealer for details. <sup>5</sup>Certain Alexa functionality is dependent on smart phone and home technology.

Comparisons based on competitive models (Lincoln MKZ class is Luxury Midsize Sedans based on Lincoln segmentation; Lincoln MKZ Hybrid class is Luxury Midsize Hybrid Sedans based on Lincoln segmentation), publicly available information and Lincoln certification data at time of release. Vehicles may be shown with optional equipment. Features may be offered only in combination with other options or subject to additional ordering requirements/limitations. Dimensions shown may vary due to optional features and/or production variability. Information is provided on an "as is" basis and could include technical, typographical or other errors. Lincoln makes no warranties, representations, or guarantees of any kind, express or implied, including but not limited to, accuracy, currency, or completeness, the operation of the information, materials, content, availability, and products. Lincoln reserves the right to change product specifications, pricing and equipment at any time without incurring obligations. Your Lincoln Dealer is the best source of the most up-to-date information on Lincoln vehicles.

2019 LINCOLN MKZ  
[Lincoln.com](http://Lincoln.com)



## MKZ AND MKZ HYBRID STANDARD FEATURES

### POWER AND HANDLING

6-speed SelectShift® automatic transmission with paddle activation (turbocharged engines)

Electric parking brake

Lincoln Drive Control featuring Adaptive Suspension, Electric Power-Assisted Steering (EPAS), and Active Noise Control

Power disc brakes with Anti-Lock Brake System (ABS)

### DRIVER-ASSIST TECHNOLOGY

Autolamp automatic on/off headlamps

Lincoln Co-Pilot360™: Blind Spot Detection with cross-traffic alert, Lane-Keeping System (includes lane-keeping aid, lane-keeping alert and Driver Alert), Pre-Collision Assist with Automatic Emergency Braking (AEB) (includes Pedestrian Detection, Forward Collision Warning, and Dynamic Brake Support), rear view camera, and automatic high-beam headlamps

Reverse Sensing System

SYNC® 3 Enhanced Voice Recognition Communications and Entertainment System with 8" LCD capacitive touchscreen, 911 Assist® SYNC 3 AppLink® Apple CarPlay™ compatibility, Android Auto™ compatibility, and 2 smart-charging USB ports

### EXTERIOR

Adaptive high-intensity discharge (HID) headlamps with LED signature lighting

Compact spare wheel and tire (tire inflator and sealant kit on MKZ Hybrid)

Power-adjustable/manual-folding, heated sideview mirrors with memory and integrated LED turn signal indicators

Rain-sensing windshield wipers

Windshield wiper de-icer (turbocharged engines)

### DRIVER CONTROLS

10.1" configurable LCD instrument cluster screen (turbocharged engines)

Auto Hold

Dual-zone electronic automatic temperature control Lincoln Connect™ 4G LTE embedded modem with Wi-Fi hotspot capability (enables Lincoln Way™ app<sup>1</sup> features when activated)

Push-button shift transmission

Remote Start System

SmartGauge® with EcoGuide instrument cluster with 2 configurable 4.2" LCD screens; EcoSelect button on center stack (MKZ Hybrid)

Universal garage door opener

### LINCOLN EXPERIENCES

Lincoln Approach Detection

Illuminated exterior door handle pockets

Lincoln logo illuminated welcome mats

Lincoln Signature fade-on/-off exterior lighting

### INTERIOR

12V powerpoints (4)

60/40 split-fold-flat spring-assisted rear seat

Comfort front seats with 10-way power adjustability and driver's side memory feature

Heated front seats

Power windows with one-touch-up/-down and global open/close

Sonata Spin aluminum accents on the instrument panel and door-trim panels

Wollsdorf leather-wrapped steering wheel and airbag cover

### AUDIO

Lincoln Premium Sound System with AM/FM stereo/single-CD player, MP3 capability and 11 speakers

SiriusXM® with 6-month All Access trial subscription<sup>2</sup>

### SAFETY AND SECURITY

Personal Safety System™ for driver and front passenger with dual-stage front airbags,<sup>3</sup> safety belt pretensioners, safety belt energy-management retractors, safety belt usage sensors, driver's seat position sensor, crash severity sensor, restraint control module and Front-Passenger Sensing System

Driver and front-passenger knee airbags<sup>3</sup>

Front-seat side airbags<sup>3</sup>

Side-curtain airbags<sup>3</sup> with roll-fold technology

AdvanceTrac® electronic stability control

Individual Tire Pressure Monitoring System (excludes spare, when equipped)

Intelligent Access with push-button start

MyKey® technology to help encourage responsible driving

Perimeter alarm

SecuriCode™ invisible keypad

SecuriLock® Passive Anti-Theft System

SOS Post-Crash Alert System™

## ENGINES

**2.0-liter iVCT  
Atkinson-cycle I-4 HEV**  
with permanent-magnet  
AC-synchronous electric motor

**188** combined system hp  
**129** lb.-ft. of torque @ **4,000** rpm

EPA-estimated fuel economy ratings<sup>4</sup>  
**42** city/**39** hwy/**41** combined mpg

**Standard: All MKZ Hybrid FWD models**

**Turbocharged  
2.0-liter I-4**

**245** hp @ **5,500** rpm<sup>5</sup>  
**275** lb.-ft. of torque @ **2,750** rpm<sup>5</sup>

EPA-estimated fuel economy ratings<sup>4</sup>  
**20** city/**31** hwy/**24** combined mpg

**Standard: All MKZ FWD models**

**20** city/**29** hwy/**23** combined mpg

**Optional: All MKZ AWD models**

**Twin-Turbocharged  
3.0-liter V6**

**350** hp @ **5,500** rpm<sup>5</sup>  
**400** lb.-ft. of torque @ **2,750** rpm<sup>5</sup>

EPA-estimated fuel economy ratings<sup>4</sup>  
**18** city/**27** hwy/**21** combined mpg

**Optional: MKZ Reserve II FWD**

**400** hp @ **5,500** rpm<sup>5</sup>  
**400** lb.-ft. of torque @ **2,750** rpm<sup>5</sup>

EPA-estimated fuel economy ratings<sup>4</sup>  
**17** city/**26** hwy/**20** combined mpg

Dynamic Torque Vectoring  
Sport-tuned Suspension

**Optional: MKZ Reserve II AWD**



<sup>1</sup>Lincoln Connect includes complimentary 5-year subscription for remote features excluding Wi-Fi hotspot, and starts with vehicle sale date. Subscription is subject to compatible 4G network availability. Evolving technology/cellular networks may affect future functionality. Certain restrictions, 3rd-party terms, or message/data rates may apply. Wi-Fi hotspot includes complimentary wireless data trial that begins upon AT&T activation and expires at the end of 3 months or when 3GB of data is used, whichever comes first, but cannot extend beyond the complimentary subscription period for remote features. To activate, go to [www.att.com/lincoln](http://www.att.com/lincoln). Lincoln Way smartphone app, for use with Lincoln Connect, is available via download and compatible with select smartphone platforms. Lincoln Way is on the App Store® and Google Play™. Learn more at [lincolnway.com](http://lincolnway.com). Message and data rates may apply. <sup>2</sup>After your trial period ends, SiriusXM audio and data services each require a subscription sold separately, or as a package, by Sirius XM Radio Inc. See SiriusXM Customer Agreement for complete terms at [www.siriusxm.com](http://www.siriusxm.com). All fees and programming subject to change. Trial subscriptions not available in AK and HI. <sup>3</sup>Always wear your safety belt and secure children in the rear seat. <sup>4</sup>Actual mileage will vary. <sup>5</sup>Horsepower and torque ratings achieved with 93-octane fuel.



**MKZ AND MKZ HYBRID TRIM SERIES**

**MKZ**

INCLUDES STANDARD FEATURES, PLUS:

- Adaptive cruise control with stop-and-go (MKZ Hybrid only)
- Lincoln Soft-Touch seating surfaces
- Manual-tilt/-telescoping steering column

**OPTIONS**

- Cargo net
- Engine block heater
- Floor liners
- Intelligent all-wheel drive (AWD) (turbocharged engines)

**MKZ RESERVE I**

INCLUDES CERTAIN MKZ FEATURES, PLUS:

- 4-way power lumbar on front seats
- 110V/150W AC power outlet (replaces a 12V powerpoint)
- Adaptive cruise control with stop-and-go
- Autofold sideview mirrors with auto-dimming driver's side feature
- Bridge of Weir™ leather-trimmed seats
- Fade-up ambient lighting
- Power-open with soft-close trunk lid
- Power-tilt/-telescoping steering column with memory feature
- Rear-seat USB ports (2)
- Voice-Activated Touchscreen Navigation System with pinch-to-zoom capability, HD Radio™ Technology, and integrated SiriusXM Traffic and Travel Link® with 6-year prepaid subscription<sup>1</sup>

**OPTIONS**

- MKZ Reserve Plus Package:** heated rear outboard seats; heated steering wheel; single-panel power moonroof; Revel® audio system with 14 speakers, 12-channel amplifier and QuantumLogic® Surround sound technology, includes HD Radio Technology; aluminum brake and accelerator pedal covers; Light Magnetic upper grille; and 19" 10-spoke satin finish machined aluminum wheels with premium painted pockets
- Cargo net
- Engine block heater
- Floor liners
- Inflatable safety belts in rear outboard seating positions<sup>2</sup>
- Intelligent all-wheel drive (AWD) (turbocharged engines)

**MKZ RESERVE II**

INCLUDES CERTAIN RESERVE I FEATURES, PLUS:

- Enhanced active park assist (includes Forward Sensing System)
- Heated and cooled front seats
- Heated rear outboard seats
- Leather-trimmed seats with perforated inserts
- Luxury heated steering wheel
- Multicontour front seats with Active Motion® massage functionality
- Premium front and rear floor mats
- Single-panel power moonroof
- Rear-window power sunshade (not available with panoramic glass roof)
- Revel audio system with 14 speakers, 12-channel amplifier and QuantumLogic Surround sound technology; includes HD Radio Technology

**OPTIONS**

- MKZ Luxury Package:** fully retractable panoramic glass roof, premium adaptive LED headlamps, and Revel Ultima® audio system with 20 speakers, 20-channel hybrid amplifier, Clari-Fi™ music restoration technology and QuantumLogic Surround sound technology; includes HD Radio Technology
- Cargo net
- Engine block heater
- Floor liners
- Inflatable safety belts in rear outboard seating positions<sup>2</sup>
- Intelligent all-wheel drive (AWD) (turbocharged engines)

**LINCOLN ACCESSORIES**

**ELECTRONICS**

- Bullfrog® portable Bluetooth® speakers<sup>3</sup>
- NextBase® Duo Cinema<sup>3</sup>
- Remote start systems
- Vehicle Security System

**EXTERIOR**

- Full vehicle cover<sup>3</sup>
- Rear bumper protector
- Side window deflectors<sup>3</sup>
- Wheel lock kit

**INTERIOR**

- Ash cup/coin holders
- Cargo area protector
- Cargo net
- Carpeted cargo mats
- Carpeted floor mats
- Custom UVS100® sunscreen<sup>3</sup>
- First aid and roadside assistance kits<sup>3</sup>
- Floor liners
- Soft cargo cooler bag
- Soft cargo organizers (large and standard sizes)
- Tablet cradle<sup>3</sup>

Shop the complete collection at [accessories.lincoln.com](http://accessories.lincoln.com)

**DIMENSIONS**

WHEELBASE	112.2"
LENGTH	193.9"
HEIGHT	58.1"
WIDTH	83.3" (including mirrors) 75.1" (mirrors folded)
HEAD ROOM	37.9" front/36.6" rear
LEG ROOM	44.3" (max.) front/37.0" rear
HIP ROOM	55.1" front/53.8" rear
SHOULDER ROOM	57.7" front/55.3" rear
CARGO VOLUME	15.4 cu. ft. MKZ / 11.1 cu. ft. MKZ Hybrid
TOTAL VOLUME	112.0 cu. ft. MKZ / 107.7 cu. ft. MKZ Hybrid
FUEL TANK	14.0 gal. 2.0-liter HEV / 16.5 gal. 2.0-liter FWD 18.0 gal. 2.0-liter AWD / 16.5 gal. 3.0-liter FWD 18.0 gal. 3.0-liter AWD

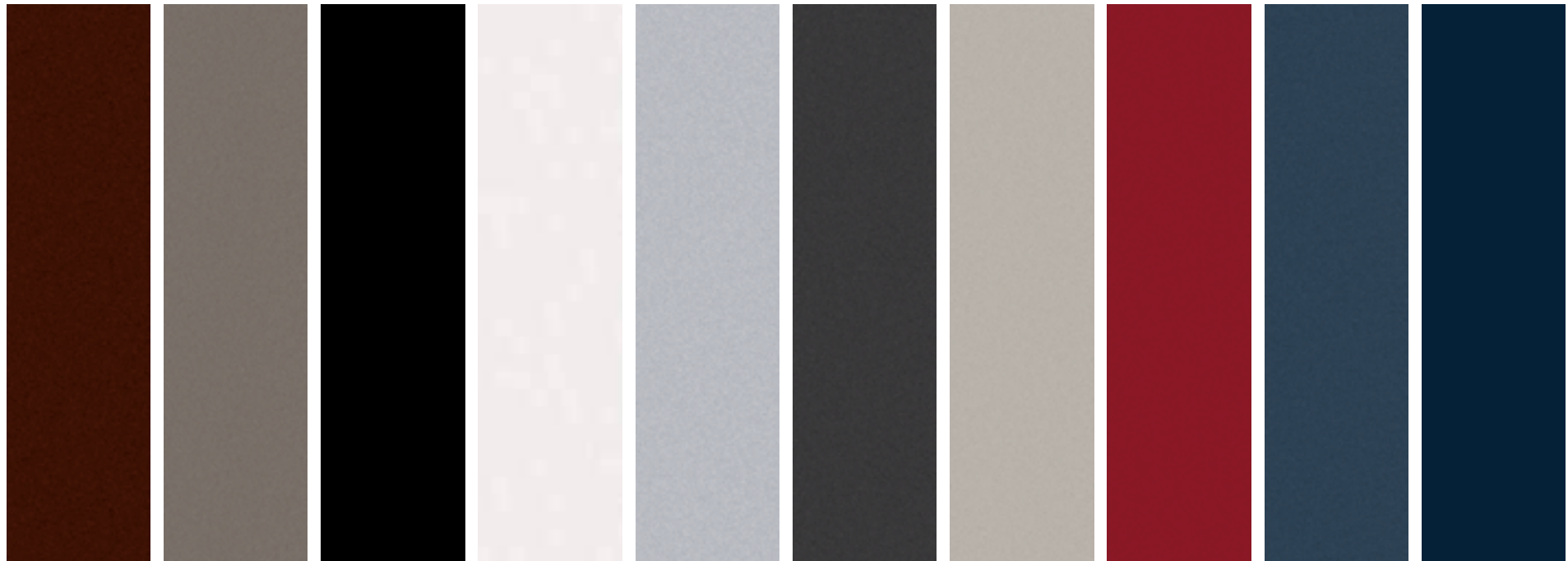
<sup>1</sup>After your trial period ends, SiriusXM audio and data services each require a subscription sold separately, or as a package, by Sirius XM Radio Inc. See SiriusXM Customer Agreement for complete terms at [www.siriusxm.com](http://www.siriusxm.com). All fees and programming subject to change. Trial subscriptions not available in AK and HI. <sup>2</sup>Always wear your safety belt and secure children in the rear seat. <sup>3</sup>Lincoln Licensed Accessory.

Lincoln Original Accessories will be warranted for whichever provides you the greatest benefit: 24 months/unlimited mileage, or the remainder of your Bumper-to-Bumper 4-year/50,000-mile New Vehicle Limited Warranty. Lincoln Licensed Accessories (LLA) are warranted by the accessory manufacturer's warranty. LLA are designed and developed by the accessory manufacturer and have not been designed or tested to Ford Motor Company engineering requirements. Contact your Lincoln Dealer for details and/or a copy of all limited warranties. Amazon, Alexa and all related logos are trademarks of Amazon.com, Inc. or its affiliates. Android Auto, Google, Google Play, Waze and other marks are trademarks of Google Inc. Apple, Apple CarPlay and iPhone are trademarks of Apple Inc., registered in the U.S. and other countries. App Store is a service mark of Apple Inc. Bridge of Weir is a trademark of Bridge of Weir Leather Company Limited. Bullfrog is a registered trademark of Stillwater Designs. Clari-Fi, QuantumLogic, Revel, Ultima and the Revel logo are trademarks of HARMAN International Industries, registered in the United States and other countries. "HD Radio" and the HD Radio logo are proprietary trademarks of iBiquity Digital Corporation. Sirius, XM, SiriusXM, and all related marks and logos are trademarks of Sirius XM Radio Inc. The Bluetooth word mark is a trademark of the Bluetooth SIG, Inc.





EXTERIOR FINISHES



1 Crystal Copper Metallic Tinted Clearcoat<sup>1</sup>    2 Iced Mocha Metallic<sup>1</sup>    3 Infinite Black Metallic    4 White Platinum Metallic Tri-coat<sup>1</sup>    5 Ingot Silver Metallic    6 Magnetic Gray Metallic    7 Ceramic Pearl Metallic Tri-coat<sup>1</sup>    8 Ruby Red Metallic Tinted Clearcoat<sup>1</sup>    9 Blue Diamond Metallic    10 Rhapsody Blue<sup>1</sup>

INTERIOR PALETTE



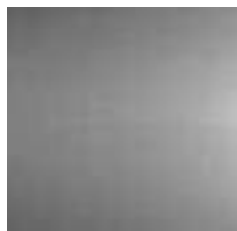
Ebony



Cappuccino



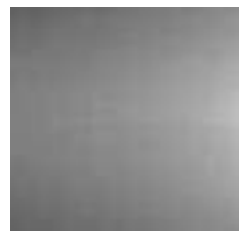
Terracotta



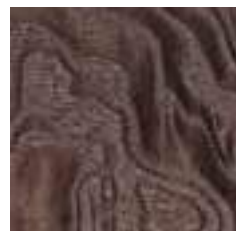
Sonata Spin Aluminum



Brown Swirl Walnut



Sonata Spin Aluminum



Espresso Ash Swirl



Brown Swirl Walnut

INTERIOR	EXTERIOR	
Ebony <sup>2</sup>		
Sonata Spin Aluminum	MKZ	1-9
Brown Swirl Walnut	Reserve I	1-9
	Reserve II	1-10
Cappuccino <sup>2</sup>		
Sonata Spin Aluminum	MKZ	1-9
Espresso Ash Swirl	Reserve I	1-9
	Reserve II	1-10
Terracotta		
Brown Swirl Walnut	Reserve II	3-7

Colors are representative only. <sup>1</sup>Additional charge. <sup>2</sup>Lincoln Soft-Touch seating surfaces standard on MKZ and MKZ Hybrid.





18" 5-Spoke Machined Aluminum with Premium Painted Pockets  
**MKZ & MKZ RESERVE I**



19" 10-Spoke Satin Finish Machined Aluminum with Premium Painted Pockets  
**MKZ RESERVE PLUS PACKAGE** Optional



19" 7-Spoke Satin Finish Machined Aluminum with Premium Painted Pockets  
**MKZ RESERVE II**

