

2002 *INTRIGUE*



 Oldsmobile



Is it possible for a machine to inspire confidence?

4 HANDLING

Can a car move you to start a collection of favorite roads?

To chase destiny around every bend?

8 CONTROL

To drive in the moment? It can, if it is Intrigue by Oldsmobile—

a car whose strength and finesse perform in perfect harmony,

whose style whispers grace and power in a single breath,

10 POWER

whose comfort soothes both body and mind. It's surprisingly

agile, with lively reflexes and performance. Isn't it time to start

your own frequent-driver club?

CONTENTS

12 COCKPIT

16 FEATURES

Smart car buyers have been dedicated Oldsmobile customers for years.

Oldsmobile has always been a leader in the automotive industry,

gaining the confidence of its owners by delivering quality vehicles and service.

20 STYLE

Now that confidence gets even stronger. Every new 2002 Oldsmobile comes

with The GM Commitment—a 5 year/60,000 mile GM Protection Plan^{®*}

24 SAFETY

and continued availability of service and parts.

*Take delivery by 10/01/02. General Motors Protection Plan Major Guard coverage for 5 years/60,000 miles (whichever comes first) effective from the date of delivery and 0 miles. Excludes normal maintenance. Some restrictions apply. See dealer for complete Major Guard details. In Florida, coverage is provided under Oldsmobile 60 month/60,000 mile limited warranty. See Florida dealer for complete limited warranty details.

A WORD ABOUT OLDSMOBILE

The Occupant Protection, Crash Avoidance and Security/Theft Deterrence sections below contain a partial listing of Intrigue safety features. See your dealer for complete details.

Use Your GM Card

What are you charging toward? When you use The GM Card, you receive 5% of every credit card purchase in GM Card Earnings*, which can save you hundreds, even thousands toward the purchase or lease of a new Intrigue or any GM car, truck or SUV (excluding Saturn, Saab and EV1 unless subject to a special promotion). To apply for your GM Card, call **1-800-8GM-CARD** 24 hours a day. Or visit us online at gmcards.com.

*See The GM Card Program Rules that are applicable to your Account for terms, conditions and limitations (either The GM Card Earnings Program Rules, which have a \$500 annual Earnings cap, or The GM Card Earnings and Redemption Allowance Program Rules, which have Earnings redemption limits).

SMARTLEASE by GMAC

SMARTLEASE lets qualified customers pay for the expected depreciation of the vehicle over a period of time, plus a rent charge, taxes and fees, rather than paying for the entire vehicle as you would with traditional financing. This typically means with SMARTLEASE you'll be able to drive a new vehicle every few years or drive a better-equipped model. Ask your Oldsmobile dealer for more information or call 1-800-32-SMART.

Accelerate Your College Savings

Upromise is a revolutionary college savings accelerator that can help you save thousands of dollars for college. Through Upromise, America's most trusted companies contribute a portion of your everyday spending into a college savings account for your children, grandchildren or any other child you wish to support. For complete details on the GM-Upromise program, go to <http://upromise-gm.com>. Enrollment is simple and absolutely free.

For Occupant Protection

Adjustable front shoulder belt guides • Driver and front-passenger air bags • Automatic door locks • Rear outboard adjustable shoulder belt guides • Safety belt cinch capability for child seats • Rear door child-security locks • Power window lockout • Child restraint upper tether anchors • Safety belt energy management • Emergency trunk release handle.

A Note on Child Safety

Always use safety belts and proper child restraints, even with air bags. Children are safer when properly secured in a rear seat. Never place a rear-facing infant restraint in the front seat of any vehicle equipped with an active air bag. See your vehicle Owner's Manual and child safety seat instructions for more safety information.

For Crash Avoidance

4-wheel antilock brakes • Brake/transmission shift interlock • Front and rear disc brakes • Disc brakes audible wear indicator • Maintenance-free battery • Tires with built-in tread wear indicators • Automatic daytime running lamps • Cornering lamps • Door warning reflectors • Halogen headlamps • Outside power rearview mirrors • Rear window defogger • Front side-window defogger • Tinted glass windshield • Automatic exterior lamp control.

For Security/Theft Deterrence

Anti-lockout feature • Battery-rundown protection • Laser-etched VIN plate • Marked body parts • PASSLock II vehicle security system • Remote deck and hood releases.

A Word About This Catalog

We have tried to make this catalog comprehensive and factual. We reserve the right, however, to make changes at any time, without notice, in prices, colors, materials, equipment specifications, models and availability. Since information may have been updated since the time of printing, please check with your Oldsmobile dealer for complete details. Oldsmobile reserves the right to lengthen or shorten the model year for any product for any reason, or to start and end model years at different times.

The GM Mobility Program

Oldsmobile recognizes the importance of mobility to everyone's life and, therefore, offers financial assistance to persons with disabilities through the General Motors Mobility Program. This program can provide up to \$1,000 reimbursement toward the cost of eligible aftermarket adaptive equipment for drivers and passengers. For details and free resource information, call: 1-800-323-9935 (TTY users: 1-800-833-9935).

Assembly

Oldsmobiles and their components are assembled or produced by different operating units of General Motors, its subsidiaries or suppliers to GM worldwide. We sometimes find it necessary to produce Oldsmobiles with different or differently sourced components than originally scheduled. Since some options may be unavailable when your vehicle is assembled, we suggest that you verify that your vehicle includes the equipment you ordered or, if there are changes, that they are acceptable to you.

Engines

Oldsmobiles are equipped with engines produced by different operating units of GM, its subsidiaries or suppliers to GM worldwide.

Updated Service Information

Oldsmobile dealers receive useful service bulletins about Oldsmobile products. You can order them by calling 1-800-551-4123.

Bumper-to-Bumper Limited Warranty

For 3 years or 36,000 miles (whichever comes first), every part of your new Intrigue is warranted for repairs to correct any vehicle defect related to materials or workmanship, including tires. With this limited warranty, there's no deductible, which means we'll pay for any repairs beyond normal maintenance. All body sheet metal components are warranted against rust-through from corrosion for six years or 100,000 miles, whichever comes first. There is also no deductible for rust-through repairs. Application of additional rust-inhibiting materials is not required or recommended. See your Oldsmobile dealer for the terms of this limited warranty.

Owner Aftercare

Throughout our 3 year/36,000 mile (whichever comes first) Bumper-to-Bumper Limited Warranty, we also offer Courtesy Transportation, free trip routing and 24-hour Roadside Assistance by calling 1-800-442-OLDS. At Oldsmobile, we're committed to your satisfaction long after the purchase of your car.

GM Protection Plan

General Motors is backing up every new Oldsmobile Intrigue with the confidence of a 5 Year/60,000 Mile General Motors Protection Plan, which also includes roadside assistance and courtesy transportation. Take delivery by 10/01/02. General Motors Protection Plan Major Guard coverage for 5 years/60,000 miles (whichever comes first) effective from the date of delivery and 0 miles. Excludes normal maintenance. Some restrictions apply. See dealer for complete Major Guard details. In Florida, coverage is provided under Oldsmobile 60 month/60,000 mile limited warranty. See Florida dealer for complete limited warranty details.

Need More Information?

Visit our Web site at www.intriguecar.com, or call toll-free 1-888-4Intrigue. For information on any other Oldsmobile product, visit us at www.oldsobile.com or call 1-800-255-6537.

©2001 GM Corp. All Rights Reserved. Printed in the USA 7/01. Alero, Bravada, Intrigue, Silhouette, Delco, PASSLock, GMAC, GM Protection Plan, General Motors Protection Plan Major Guard, Major Guard, The GM Card, Oldsmobile, the Oldsmobile emblem, the Oldsmobile nameplate and SMARTLEASE are registered trademarks of General Motors Corp. General Motors Protection Plan is a service mark of General Motors Corp. "Aurora" is used with permission of Hankook Tire. OnStar and the OnStar emblem are trademarks of OnStar Corp. Printed on recyclable paper. ♻



Intrigue GL in Sterling. Shown with available equipment.



Intrigue GLS in Black Onyx. Shown with available Precision Sport Package.

HANDLING

WITH INTRIGUE'S DEFT BALANCE, CORNERS AREN'T OBSTACLES, THEY'RE ALLIES. Any road is enlivened when introduced to Intrigue's precision-tuned steering and suspension systems. Its patented magnetic speed-sensitive variable-assist power steering system, 4-wheel disc antilock brakes and remarkably rigid body structure make corners eager partners. Yet washboard bumps are mellowed by a state-of-the-art suspension that smooths the road without limiting your ability to feel it. Indeed, Intrigue keeps its poise, even when driven on twisting roads.

4



TWIN-TUBE STRUTS

Intrigue's refined road manners result from specially engineered gas-charged, twin-tube coil-over struts with 4-stage valving. They soften up rough spots without sacrificing crisp, controlled cornering.



"We found ourselves leaning on the Intrigue in the corners, as if it were a BMW or Mercedes."

Automobile Magazine



PRECISE STEERING RESPONSE

The magnetic speed-sensitive variable-assist power steering provides the precise amount of power assist. The system eases parking and low-speed maneuvers but helps keep you connected to the road at higher speeds.

OUTSTANDING ON-CENTER FEEL

Rigidly mounted but well-damped to keep out road rumble and noise, the patented splined intermediate shaft enhances on-center steering feel to help you stay in control.

ROAD GRIP AND STABILITY

The standard tire specifications and the available H-rated tires enhance high-speed directional stability as well as provide outstanding response. Sound-isolating wheelhouse liners help reduce road and tire noise.

GREAT RIDE AND BETTER HANDLING

With Intrigue's rigid strut towers and twin-tube struts with variable strut valving, you no longer need to choose between ride and handling. You get both. You can feel the road but the road doesn't become intrusive.

A TIGHT BODY EQUALS A QUIET CABIN

A tight, rigid body lets the suspension do its work while reducing road noise and vibration into the cabin. A rigid body structure also reduces body flex and twist, so Intrigue keeps squeaks and rattles to a minimum.

TAKES CURVES WITH CONFIDENCE

The tri-link rear suspension controls unwanted toe change under cornering loads and when driving over bumps. By maintaining precise wheel geometry, Intrigue helps you negotiate curves with confidence and handles bumps with impressive directional stability.



QUICK REACTION

Lightweight alloy wheels with P225/60R16 radial touring tires react quickly to your input.





Intrigue GL in Sandstone. Shown with available equipment.

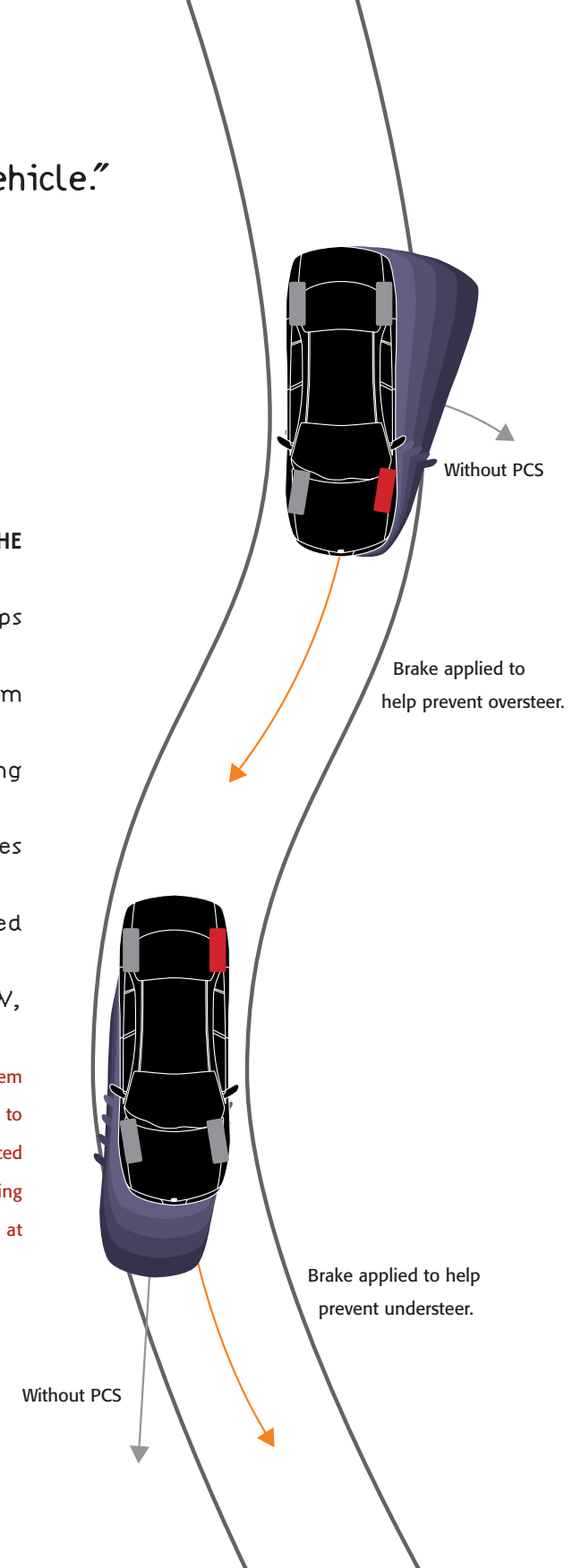
“It... makes you feel like you're really in control of the vehicle.”

AutoWeek on Speedvision

CONTROL

THE FIRST MIDSIZE SEDAN THAT EXPECTS THE UNEXPECTED — AND WORKS TO HELP THE DRIVER PREVENT IT. Intrigue's available Precision Control System (PCS) helps prevent a loss of control when you encounter unexpected road hazards. The system helps enhance safety by working with Intrigue's balanced performance, monitoring steering angle, turning rate and lateral g's, then modulating one or more brakes when needed to help your Intrigue follow your steering commands. Using advanced control technology usually found on marques like Mercedes-Benz and BMW, Intrigue with PCS helps you command challenging handling situations. PCS is available in the Driver Control Package and Premium Leather Package, and standard in the Precision Sport Package.

The computer-controlled Precision Control System can selectively apply any of the four brakes to counteract a front- or rear-end slide. This advanced system helps Intrigue to respond to your steering input. For a demonstration, visit us at www.intriguecar.com/pcs.

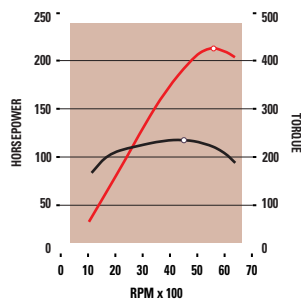


POWER

“Probably nowhere else can you buy so much engine excellence at such reasonable cost.”

Ward's Auto World, January 2000

IT'S NOT SO MUCH THE SEAT OF POWER AS IT IS THE PINNACLE. Intrigue's 3.5-liter Twin-Cam V6 was named one of its "Ten Best" engines in 1999 and 2000 by Ward's Auto World. Surprised? You shouldn't be. Developed using extensive computer testing, it uses a 4-valve head design pioneered in the Aurora V8 and lightweight aluminum construction for swift passing and refined balance. Press the accelerator, and you'll feel like you are atop a thoroughbred—its 215 horses driven through an automatic transmission that reacts instinctively to your commands. It's even on top of maintenance needs with long-life fluids, platinum-tipped plugs that last up to 100,000 miles and a steel timing chain that may never need replacement.*



AWARD-WINNING PERFORMANCE

Intrigue's 215 hp engine is among the most powerful in its class. Like a sprinter, the Twin-Cam, 24-valve V6 excites with explosive performance. But like all champions, it always has extra strength in reserve, thanks to a broad, flat torque curve peaking at 230 lb-ft.



4-VALVE HEADS

This advanced design uses twin intake valves to allow more air into the combustion chamber, so fuel burns more efficiently and completely. Two exhaust valves allow exhaust gases a faster exit, helping Intrigue's engine to keep delivering power at higher speeds.

OUTSTANDING EFFICIENCY

Intrigue boasts an impressive EPA estimated fuel economy of 20 city/30 highway.



*Maintenance needs vary with different uses and driving conditions. See the Owner's Manual for more information.



Intrigue GLS in Ruby. Shown with available Precision Sport Package.



CRASH AVOIDANCE

When making evasive maneuvers, avoiding a collision can depend on controlling the car. While you steer around danger, the available Precision Control System's™ sophisticated sensors and computer controls help to maintain handling stability.



REMAIN POISED

Cornering balance can be upset by uneven pavement, potholes or slippery surfaces. PCS sensors monitor multiple functions several times per second to help counteract unexpected instability.



Intrigue GL in Bronze Mist. Shown with available equipment.

“The Intrigue’s clean, orderly instrument panel is the centerpiece of an especially nice interior.”

Automobile Magazine

COCKPIT

WILL YOU COME TO REST, OR RECHARGE? SAVE TIME, OR SAVOR IT? Intrigue never asks you to cast your allegiance one way or the other. It’s engineered to indulge divergent spirits in equally rewarding measure. The airy-feeling 5-passenger cabin provides you with panoramic visibility for safety, an air filtration system designed to help block out pollen and dust, and supportive contoured seating to coddle you in comfort—whether you’re enjoying a brisk drive or savoring a leisurely journey home. The cockpit beckons with intuitively placed controls and easy-to-see instruments. It’s an interior designed to forge a clear connection between driver and road—how strong of a connection depends only on your mood.

ELECTROCHROMIC REARVIEW MIRROR

Standard on GLS models, the mirror automatically dims in low-light conditions to virtually eliminate distracting glare. It also features a built-in compass.



DUAL-ZONE COMFORT

Intrigue doesn’t just focus on the driver’s needs. Automatic climate control, standard on GL and GLS, provides dual-zone temperature settings for the individual comfort of the driver and front passenger.



Intrigue GLS in Neutral Two-Tone leather trim. Shown with available Precision Sport Package.



Intrigue GL with Premium Leather Package, shown in Neutral.

FEATURES

INTRIGUE CARESSES ITS OCCUPANTS—AND THE ROAD—WITH EQUAL FERVOR. In fact, Intrigue's inviting interior is specifically equipped to promote a comfortably acute interplay between you and the asphalt below. As part of the available Premium Leather Package, leather-trimmed and heated front seats embrace you in supportive, power-controlled comfort. To personalize your driving climate, 4-season air conditioning with rear-seat air ducts creates a soothing atmosphere in which to explore the longer road home. When you finally do pull over, a standard retained power feature conveniently keeps accessories operating—assuming you can convince yourself to switch Intrigue's dash-mounted ignition to "off."

16



6-WAY POWER DRIVER'S SEAT

Finding an ideal sitting position won't require guesswork and fiddling with the controls. With the 6-way power driver's seat (available on GX in the Driver Control Package, standard on GL and GLS), you can quickly dial in the perfect setting.



HEATED FRONT SEATS

Enjoy the Intrigue's warm embrace on cold mornings. The heated seats (available on GL in the Premium Leather Package, and standard on GLS) will warm driver and front passenger by simply pressing the buttons.



FOLDING REAR-SEAT ARMREST

To make life in the rear seat a little more gracious, Intrigue features a folding rear-seat armrest. Sit back and relax.



FINGERTIP CONTROL

The steering-wheel-mounted cruise control feature is standard on all models. The steering-wheel-mounted audio touch controls are standard on GL and GLS models.



CONVENIENT STORAGE

Intrigue features lots of handy storage places. This unique driver's storage compartment to the left of the steering wheel offers easy access to frequently needed items.



1. AIR FILTRATION SYSTEM

For your comfort, the standard air filtration system is designed to block out dust and pollen particles down to 1 micron in size and to keep out most particles that can irritate allergies.

2. TINTED, SOLAR-CONTROL GLASS

Standard in all Intrigue models are tinted glass panels, plus a solar-control windshield and rear-window glass to help block out radiant heat. This also reduces the workload of the air conditioning system.

3. ERGONOMIC CONTROL LAYOUT

Major dials and controls are clearly visible and positioned to be easily reached and operated. Quick access lets you keep your focus on the road ahead to enhance your safety.

4. ILLUMINATED ENTRY SYSTEM

The standard illuminated entry system is activated by lifting the door handle or pressing the available remote keyless entry button. To add a gracious touch, the system dims slowly, not abruptly, when the last door is closed.

5. REAR-SEAT AIR DUCTS

Rear occupants will appreciate the rear-seat ducting that delivers cooled or heated air to keep them comfortable.

6. REAR-WINDOW GRID ANTENNA

The technologically advanced rear grid antenna eliminates the mast antenna which is prone to breakage. It also enhances Intrigue's clean exterior appearance.

7. TRUNK SPACE

Intrigue's spacious trunk has a generous 16.4 cu.ft. of room to hold plenty of luggage even for a long weekend away. Standard on GL and GLS is a convenient cargo net to help keep small items secured.

BOSE® AUDIO SYSTEM

Experience audio excellence with the BOSE CD/cassette premium stereo system. Acoustically matched to Intrigue's interior, its eight speakers and high-power amplifier ensure a most exuberant driving tempo. Available on GL, and GLS with Precision Sport Package.



SPLIT-FOLDING REAR SEATBACK

Need to carry long cargo and a rear passenger? Intrigue's 60/40 split rear seatback (available on GX, standard on GL and GLS) lets you fold down each side individually so nothing—and no one—gets left behind. (GL leather-trimmed seating shown.)



"Intrigue is certainly the style leader in the midsize sedan class."

Popular Mechanics

STYLE

ITS SHAPE IS AT ONCE RIVETING TO THE EYE AND INVISIBLE TO THE WIND. From the grille-less leading edge and contoured mirrors to the pinched waist and fluted body side, Intrigue eloquently announces its intention to be as purposeful as it is graceful. Dazzling like gems in a jeweler's light, the intricate headlamps glisten through the atmosphere, leading the sculpted shape confidently into the future. As you accelerate, the smooth, sleek skin stretched taut over a muscular frame leaves the wind grasping for something to hold.

20



FOGLAMPS

The front-mounted foglamps, standard in GL and GLS, are designed to enhance safety by giving you more visibility in foggy and hazy conditions.



GOLD EMBLEM PACKAGE

To emphasize Intrigue's presence, you can opt for the available gold badging to accent the body and wheels.



Intrigue GL in Black Onyx. Shown with available equipment.

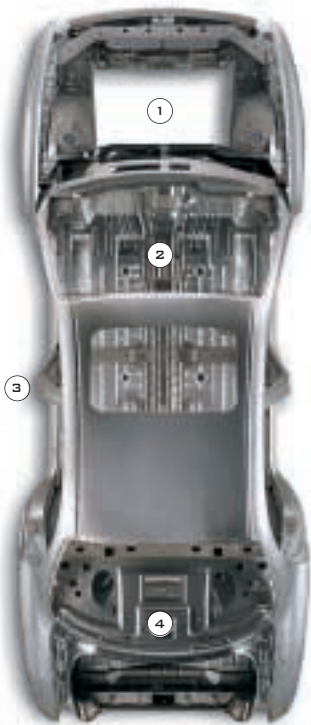


Intrigue GLS in Sterling. Shown with available Precision Sport Package.

SAFETY

IN ORDER TO PROVIDE INSPIRATION, YOU MUST FIRST OFFER PROTECTION. This understanding shaped Intrigue from the earliest design stages. Its strong-shouldered look reflects the sturdy structure underneath—the foundation for a comprehensive safety system with front and rear crush zones, side door beams, dual frontal air bags,* 4-wheel disc antilock brakes and available all-speed full-function traction control. The available Precision Control System helps provide directional stability in unexpected hazard situations, while cornering lamps and daytime running lamps improve visibility for you and oncoming drivers. There's also battery-rundown protection, theft-detering PASSLock II, automatic power locks and available keyless entry.

24



CHASSIS SAFETY FEATURES

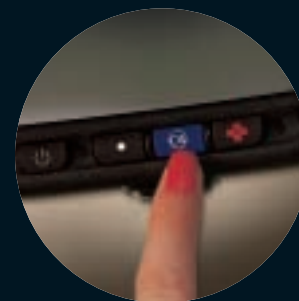
1. Front crush zone
2. Intrusion-resistant floorpan
3. Rigid roof pillars
4. Rear crush zone
5. Side-impact door beams (not shown)

“The Intrigue turned out to be exceptional.”

Car and Driver



*Always use safety belts and proper child restraints, even with air bags. Children are safer when properly secured in a rear seat. See the Owner's Manual for more safety information. See inside back cover for "A Note on Child Safety".



ONSTAR

The OnStar® service, standard in GLS, is designed to enhance your security while on the road. In the U.S. and Canada, wherever a cellular connection can be made, OnStar can pinpoint your location and automatically alert an OnStar Advisor in case of an emergency. For instance, the OnStar system can sense the deployment of the air bag and alert the Advisor, who will contact help and provide them with your location.

*One year OnStar Safety and Security contract is standard on Intrigue GLS. OnStar is not available on GX or GL. OnStar uses existing emergency service providers and cellular and satellite technologies. OnStar services require vehicle electrical system and wireless service to be available and operating for features to function properly. Call 1-800-OnStar-7 or visit www.onstar.com for system limitations and details.

STANDARD FEATURES FOR ALL INTRIGUE MODELS

POWERTRAIN/CHASSIS

3.5-liter Twin-Cam V6 engine with electronic 4-speed automatic transmission • Hydraulic engine mounting system • Reduced-maintenance powertrain features • Front-wheel drive • 4-wheel independent suspension • 4-wheel disc brakes • Magnetic speed-sensitive variable-assist rack-and-pinion steering • Stabilizer bars, front/rear • 16-inch aluminum alloy wheels • P225/60R16 radial touring tires

SAFETY AND SECURITY

Safety-cage construction with side-impact protection • Dual frontal air bags • 3-point outboard safety belts with rear center lap belt • 4-wheel antilock brakes • Brake/transmission shift interlock • Daytime running lamps • Halogen headlamps with automatic control • Cornering lamps • Variable-intermittent wiper system • Side window and electric rear window defoggers • Automatic programmable power door locks • Rear-door child-security locks • PASSLock II vehicle security system • Front door warning reflectors • Maintenance-free battery with battery-rundown protection

INTERIOR

Contoured front bucket seats • Elevated “theater-style” rear bench seat with folding armrest • Full instrumentation • Center floor console • Dash-mounted ignition and hazard switches • 4-spoke steering wheel with adjustable steering column • Steering-wheel-mounted cruise control with resume and acceleration features • Power trunk release • Air conditioning • Rear-seat air ducts • Storage: front center armrest, locking glove box, driver’s personal compartment, dual front and rear cupholders, and map pockets in doors and front seatbacks • Full cut-pile carpeting in cabin • Carpeted front and rear floor mats • Assist grips for all outboard passengers • Lighting system: courtesy, glove box, trunk and reading lamps, plus illuminated entry/exit • Covered vanity mirrors • Visors with sunshade extenders • Power windows with driver’s side auto-down • Auxiliary 12-volt power outlet • Retained accessory power • Air filtration system • 4-speaker extended-range sound system

EXTERIOR

“Liquid crystal” headlamps and taillamps • Tinted windows with solar-control windshield and rear window glass • Rear window grid radio antenna • Dual power foldaway outside mirrors (black on GX; body color on GL and GLS) • Gas-charged hood and nonintrusive trunk struts • Body-color side moldings

MODEL-SPECIFIC FEATURES S - Standard / A - Available

Option Packages.

You can realize substantial savings with any of our option packages:

GX Driver Control Package, **GL** Premium Leather Package and **GLS** Precision Sport Package

	GX	GX With Driver Control Package	GL	GL With Premium Leather Package	GLS	GLS With Precision Sport Package
AM/FM stereo with CD player	S	S	S	S	—	—
AM/FM stereo with CD and cassette players	A	A	A	A	S	—
60/40 split-folding rear seatback	A	A	S	S	S	S
Remote-control keyless entry system with panic button	—	S	S	S	S	S
Full-function traction control system	—	S	S	S	S	S
6-way power driver’s seat	—	S	S	S	S	S
6-Speaker Dimensional Sound System	—	S	S	S	S	—
Leather-wrapped steering wheel and shifter knob	—	S	S	S	S	S
Fog lamps	—	—	S	S	S	S
Steering-wheel-mounted audio touch controls	—	—	S	S	S	S
Automatic dual-zone climate control system with outside temperature readout	—	—	S	S	S	S
Lighted visor vanity mirrors	—	—	S	S	S	S
Cargo net	—	—	S	S	S	S
6-way power passenger’s seat	—	—	—	S	S	S
Leather-trimmed seating areas	—	—	—	S	S	S
Heated front seats	—	—	—	S	S	S

Continued on next page

MODEL-SPECIFIC FEATURES S - Standard / A - Available

	GX	GX With Driver Control Package	GL	GL With Premium Leather Package	GLS	GLS With Precision Sport Package
Electrochromic inside rearview mirror with compass	—	—	—	—	S	S
OnStar*	—	—	—	—	S	S
Universal garage door opener	—	—	—	—	S	S
Driver's seat power lumbar adjustment	—	—	—	—	—	S
Two-tone leather seats	—	—	—	—	S	S
Faux woodgrain interior accents ¹	—	—	—	—	S	S
Sun & Sound Package (Includes power sunroof and Bose Audio System)	—	—	A	A	—	—
Power sunroof with sliding/tilting glass panel	—	—	A ²	A ²	S	S
Bose Premium Audio System	—	—	A ²	A ²	—	S
Rear decklid spoiler	A	A	A	A	—	S
Precision Control System (PCS)	—	A	A	A	—	S
16-inch chrome-plated aluminum alloy wheels	—	—	A	A	—	S
Engine block heater	A	A	A	A	A	A
Gold Emblem Package	A	A	A	A	A	A

¹Vehicles with pewter interior trim feature brushed sterling accents.

²Available only in Sun and Sound Package.

^{*}One year OnStar Safety and Security contract is standard on Intrigue GLS. OnStar is not available on GX or GL. OnStar services require vehicle electrical system and wireless service to be available and operating for features to function properly. Call 1-800-OnStar-7 or visit www.onstar.com for system limitations and details.

SPECIFICATIONS
POWERTRAIN

Engine displacement	3.5 liters (212 cu in)
Horsepower	215 @ 5600 rpm
Torque (lb-ft)	230 @ 4400 rpm
Fuel injection	Sequential port
Transmission	Electronic 4-speed overdrive automatic
Transaxle ratio	3.05 (3.29 with PCS)
EPA estimated fuel economy	20 city/30 highway

INTERIOR DIMENSIONS

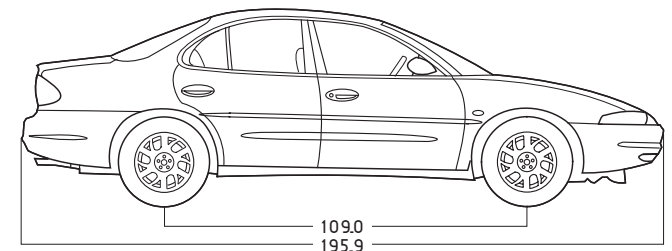
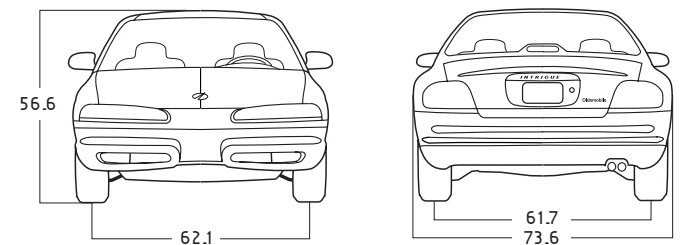
Headroom, front/rear (in)	39.3/37.4
Legroom, front/rear (in)	42.4/36.9
Shoulder room, front/rear (in)	58.0/57.0
Hip room, front/rear (in)	55.6/54.8

CAPACITIES

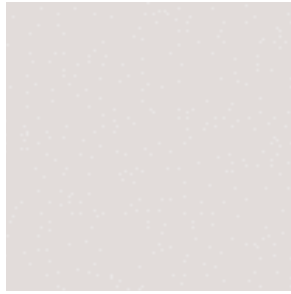
Passengers	5
Trunk volume (cu ft)	16.4
Fuel (gal)	17.0

EXTERIOR DIMENSIONS

Wheelbase (in)	109.0
Length (in)	195.9
Width (in)	73.6
Height (in)	56.6
Curb weight (lb)	3434
Tread width, front/rear (in)	62.1/61.7
Turning circle (ft)	36.6



EXTERIOR COLORS/INTERIOR COLOR AVAILABILITY*



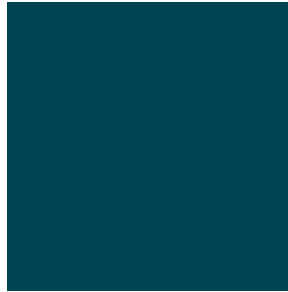
STERLING
Pewter



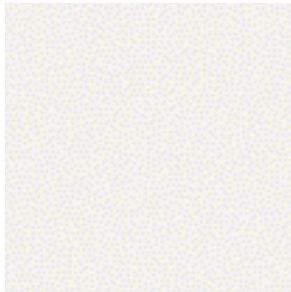
INDIGO
Neutral or Pewter



SANDSTONE
Neutral



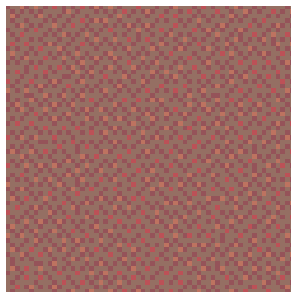
TROPIC TEAL
Neutral



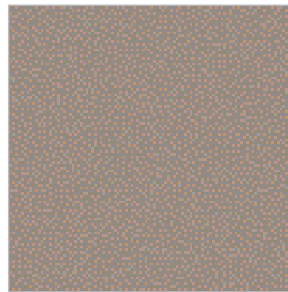
IVORY WHITE
Neutral or Pewter



BLACK ONYX
Neutral or Pewter

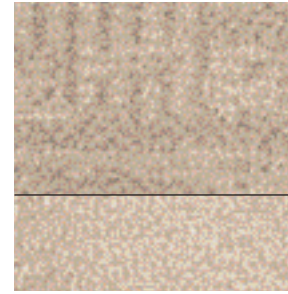


RUBY RED
Neutral or Pewter

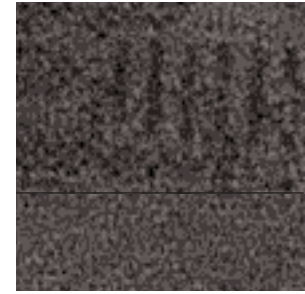


BRONZE MIST
Neutral or Pewter

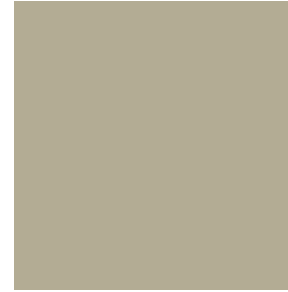
INTERIOR COLORS**



NEUTRAL CLOTH
(GX, GL)



PEWTER CLOTH
(GX, GL)



NEUTRAL LEATHER
(GL)



PEWTER LEATHER
(GL)



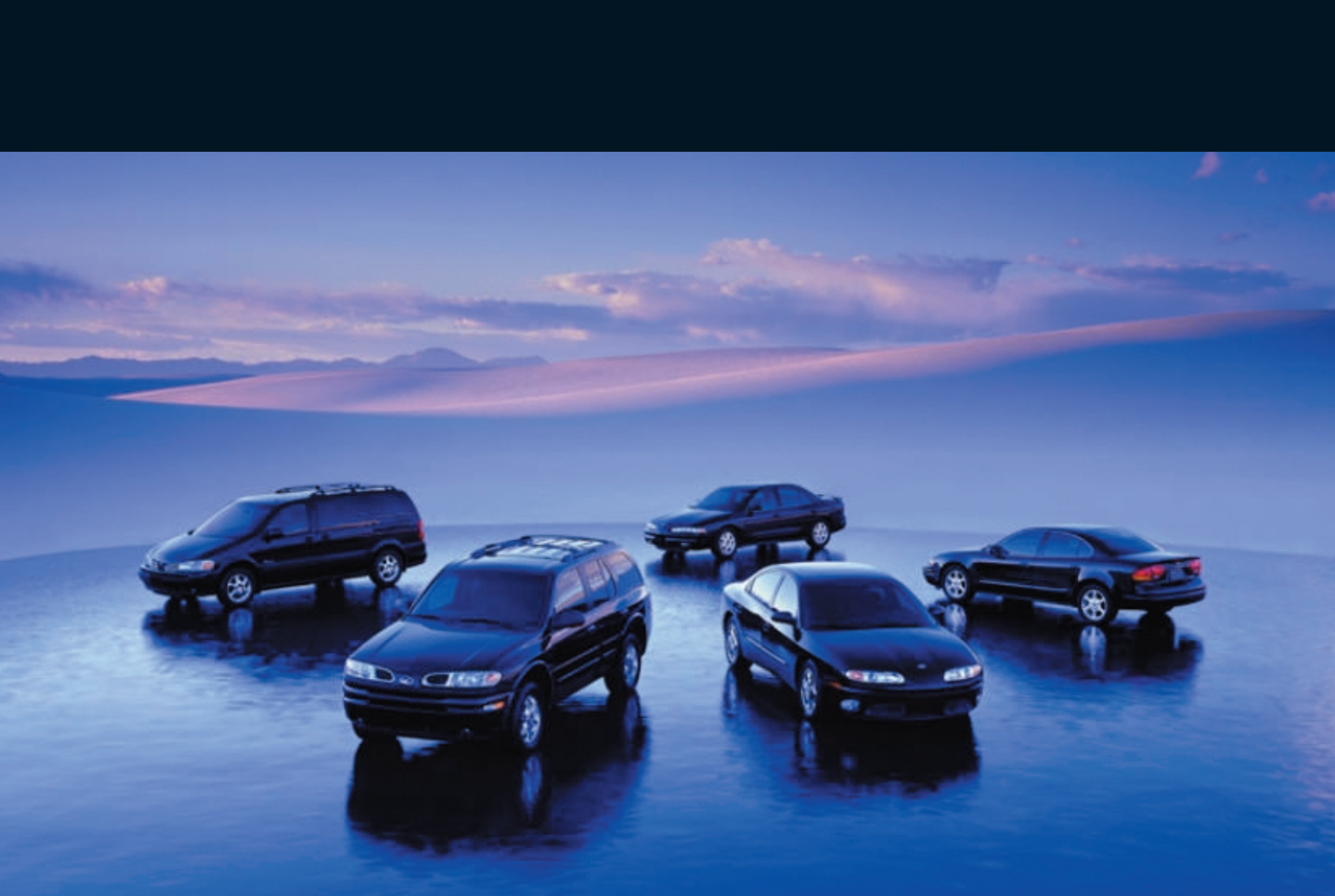
NEUTRAL TWO-TONE LEATHER
(GLS)



PEWTER TWO-TONE LEATHER
(GLS)

*All exterior colors are metallic except Ivory White and Black Onyx. The paint color samples shown here may vary slightly from actual vehicle color due to the printing process.

**Cloth interior is standard on GX and GL. Leather interior is standard on GL with Premium Leather Package and all GLS models.



Silhouette

Bravada

Intrigue

Aurora

Alero

www.oldsmobile.com

| 1-800-255-6537

www.intriguecar.com