

# 14 TRANSIT CONNECT WAGON+VAN

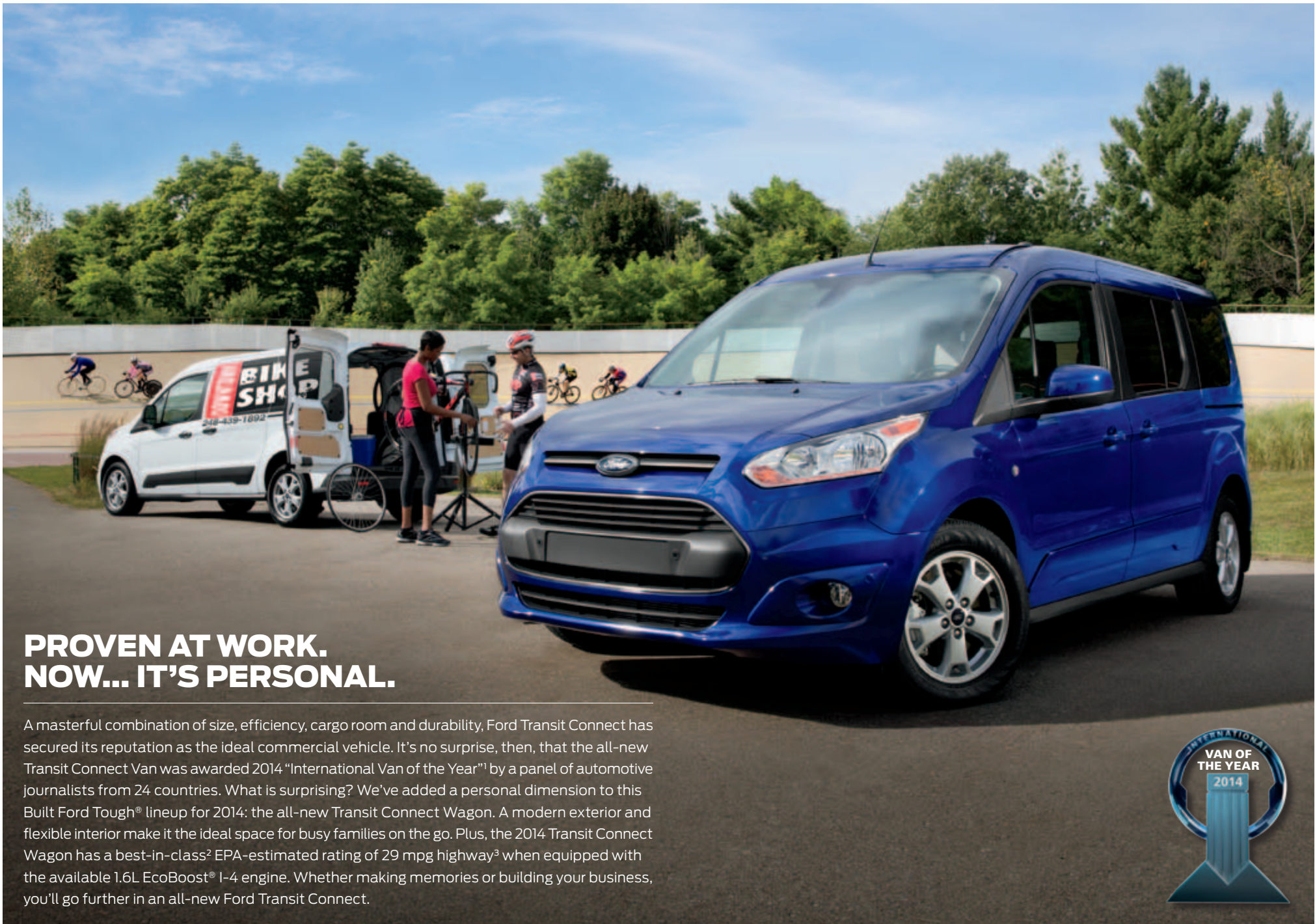




**YOUR OPTIONS ARE WIDE OPEN.**  
The all-new Transit Connect Wagon+Van.

14 TRANSIT CONNECT  
WAGON+VAN  
ford.com





## PROVEN AT WORK. NOW... IT'S PERSONAL.

A masterful combination of size, efficiency, cargo room and durability, Ford Transit Connect has secured its reputation as the ideal commercial vehicle. It's no surprise, then, that the all-new Transit Connect Van was awarded 2014 "International Van of the Year"<sup>1</sup> by a panel of automotive journalists from 24 countries. What is surprising? We've added a personal dimension to this Built Ford Tough<sup>®</sup> lineup for 2014: the all-new Transit Connect Wagon. A modern exterior and flexible interior make it the ideal space for busy families on the go. Plus, the 2014 Transit Connect Wagon has a best-in-class<sup>2</sup> EPA-estimated rating of 29 mpg highway<sup>3</sup> when equipped with the available 1.6L EcoBoost<sup>®</sup> I-4 engine. Whether making memories or building your business, you'll go further in an all-new Ford Transit Connect.



*XLT Long Wheelbase Van. Frozen White. Titanium Long Wheelbase Wagon. Deep Impact Blue. Available equipment.*

<sup>1</sup>Based on European-produced and sold model. <sup>2</sup>Class is Small Cargo Vans. <sup>3</sup>EPA-estimated rating of 22 mpg city/29 mpg hwy/25 combined mpg. 1.6L EcoBoost short-wheelbase wagon. Actual mileage will vary.

**14 TRANSIT CONNECT  
WAGON+VAN**  
ford.com





## FOCUSED ON FLEXIBILITY.

Transit Connect Wagon lets you exercise your creativity inside. With more available configurations on the long-wheelbase model than any other vehicle in its class,<sup>1</sup> your options are endless. Carry passengers. A track bike. Personal gear. Or carry it all together. No worries here. With all seats up, Transit Connect Wagon can seat up to 7 people. Along the way, they can enjoy a panoramic fixed-glass Vista Roof<sup>®2</sup> with power sunshade, power 2nd-row windows with one-touch-up/-down,<sup>2</sup> and 3rd-row seats<sup>2</sup> that slide to enhance leg room or storage space. To transport long items along with passengers, fold one side of the seating flat. Up above, a front overhead storage shelf keeps frequently needed items close at hand. For rear passengers, an aircraft-style mid-vehicle overhead console<sup>2</sup> features closeable bins – perfect for off-the-floor and out-of-view storage of personal items. Transit Connect Wagon. A multi-purpose vehicle for multi-motivated you.



<sup>1</sup>Class is Small Cargo Vans. <sup>2</sup>Available feature.



## ACCESS TO ADVENTURE.

For work or play, you've got the perfect partner in Ford Transit Connect. Enjoy easy entry and exit thanks to dual sliding side doors, as well as your choice of a rear liftgate<sup>1</sup> or 180° swing-out rear cargo doors.<sup>1</sup> Transit Connect Wagon has the seating capacity and cargo space to carry your family to its next event. Transit Connect Van is the perfect tool to bring your business to life. Its best-in-class cargo room (8 cu. ft. more than its nearest competitor) and flat load floor behind the front seats make any job easy. With a durable vinyl floor covering and cargo tie-down hooks to help keep things in their place, deliveries or on-site repairs are a snap. Open the door to your adventure with Ford Transit Connect.

*XLT Long Wheelbase Van. Frozen White. Titanium Long Wheelbase Wagon. Deep Impact Blue. Available equipment.*

<sup>1</sup>Available feature.

**14 TRANSIT CONNECT  
WAGON+VAN**  
ford.com





## STANDS BY YOUR SIDE.

Everyone needs an ally in life. And with multiple configurations, there's sure to be a Transit Connect Wagon that's just right for you. And all your best friends. Choose from XL, XLT and Titanium trim levels. Short-wheelbase models feature 2 rows of seats for up to 5 people. In long-wheelbase models, 3 rows seat up to 7. Outside, bold metallic colors like Solar, Burnished Glow and Midnight Sky, as well as 4 wheel choices, help inspire your creative side. Inside, fold-forward or fold-flat seats and a vertical cargo net<sup>1</sup> appeal to your DIY side. A mid-vehicle overhead storage bin,<sup>1</sup> in-floor storage<sup>1</sup> and 3 power outlets<sup>1</sup> speak to your practical side. An observation mirror<sup>1</sup> that helps you keep an eye on those in rows 2 and 3,<sup>1</sup> and the MyKey<sup>®</sup> programmable ignition key<sup>1</sup> – that allows you to restrict maximum vehicle speed, audio volume, and more – speak directly to your protective side. Empower yourself in a 2014 Transit Connect Wagon.

*XL Long Wheelbase Van. Frozen White. XLT Long Wheelbase Wagon. Burnished Glow. Available equipment.*

<sup>1</sup>Available feature.

**14<sup>+</sup> TRANSIT CONNECT  
WAGON+VAN**  
ford.com





## MASTER OF ADAPTABILITY.

Transit Connect Wagon was designed around a guiding principle – be prepared for anything. Its functional interior is ready to adapt at a moment's notice. If your day starts with passengers, a low step-in height makes entry and exit easy for everyone. Need to pick up equipment later? The 2nd-row seats fold forward or can be removed for more room in short-wheelbase models. In long-wheelbase wagons, 2nd- and 3rd-row seats fold down to create a flat load floor. Power 2nd-row windows with one-touch-up/-down<sup>1</sup> on the dual sliding side doors help keep the air (and hair) flowing. Whatever you're moving – cargo, people or even pets – Transit Connect Wagon allows you to meet the challenges of your day. With complete confidence.

<sup>1</sup>Available feature.

14 TRANSIT CONNECT  
WAGON+VAN  
ford.com





## BRIGHTENS MARKET DAY. AND EVERY DAY.

Whether you're an early riser or night owl, Transit Connect Wagon has thoughtful features that enhance every trip. In back, the liftgate opens high for quick access, and features a grab handle for convenient closure. Plus, the low liftover height helps make loading easy. Up front, cornering fog lamps<sup>1</sup> throw additional light to the sides of the vehicle – particularly helpful on pre-dawn market adventures. To quickly clear fog, snow, sleet and ice should bad weather move in, a press of the Quickclear™ electric windshield defroster<sup>1</sup> button activates heating elements fused between layers of windshield glass. It works along with the heated windshield washer jets.<sup>1</sup> With Transit Connect, you can stay on task. All day. Every day.

*XLT Long Wheelbase Wagon. Burnished Glow. Available equipment.*

<sup>1</sup>Available feature.



**14** TRANSIT CONNECT  
WAGON+VAN  
ford.com







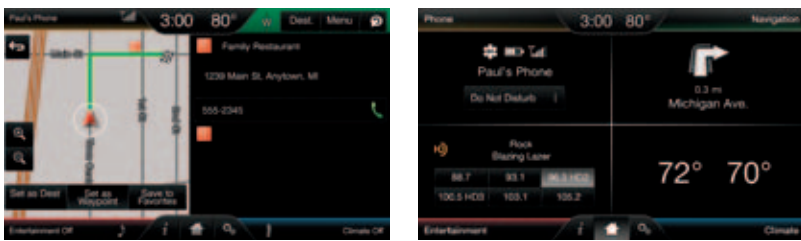
## OPENS THE LINES OF COMMUNICATION.

Keeping your “favorites” up to date on your ETA is easy in Transit Connect Wagon. Just speak your mind. Then marvel as voice-activated Ford SYNC<sup>®1</sup> delivers hands-free calls, Bluetooth<sup>®</sup>-streaming music and more with simple voice commands. Once paired, it can download your contacts and play music from your smartphone. It can also recognize your MP3 player, USB or iPod.<sup>®</sup> Just touch a button on the steering wheel and say things like “Call: Sam Duff at home” or “Play playlist: Indie Rock.” SYNC AppLink<sup>™1,2</sup> even lets you control Pandora,<sup>®</sup> iHeartAuto,<sup>™</sup> SiriusXM<sup>®</sup> and select other apps by voice too. Taking command of your drive is easy in Transit Connect Wagon. SYNC. Say the word.

<sup>1</sup>Available feature. Driving while distracted can result in loss of vehicle control. Only use mobile phones and other devices, even with voice commands, when it is safe to do so. Not all features are compatible with all phones. <sup>2</sup>SYNC AppLink is available on select models and compatible with select smartphone platforms. SYNC AppLink is not compatible with MyFord Touch.<sup>®</sup> Commands may vary by phone and AppLink software.

**14 TRANSIT CONNECT  
WAGON+VAN**  
ford.com





## PERSONALIZES EACH DRIVE.

SYNC<sup>®1</sup> with MyFord Touch<sup>®1</sup> lets you choose what to display on the homepage of the 6.5" color LCD touch screen. Control the system by voice or touch, whichever is most comfortable for you. Press "accept" on the screen or a button on the steering wheel to answer a call from your paired phone (without having to look for it). With HD Radio<sup>™</sup> Technology,<sup>2</sup> simply touch the shopping cart "TAG" icon while a new favorite song is playing and purchase it later on iTunes<sup>®</sup>. To further enhance your journey, SiriusXM<sup>®</sup> Satellite Radio<sup>2</sup> includes a 6-month Sirius All Access trial subscription. Enjoy every premium satellite radio channel, including commercial-free music, plus sports, news, talk, and entertainment channels. Vehicles with a voice-activated Navigation System<sup>2</sup> also receive SiriusXM Traffic and SiriusXM Travel Link services as part of the trial, so you'll have the ability to look up fuel prices, check local and national weather, and get detailed traffic information.



<sup>1</sup>Available feature. Driving while distracted can result in loss of vehicle control. Only use SYNC/MyFord Touch/other devices, even with voice commands, when it is safe to do so. Some features may be locked out while the vehicle is in gear. Not all features are compatible with all phones. <sup>2</sup>Available feature.

14 TRANSIT CONNECT  
WAGON+VAN  
ford.com





## SPACE FOR 7. AMENITIES FOR ALL.

Transit Connect Wagon surrounds you in comfort<sup>1</sup> and safety. Optional on XLT and standard on Titanium, enjoy stylish leather-trimmed seats in Medium Stone. Everyone's H<sub>2</sub>O or coffee can stay close at hand thanks to cupholders in each row (including 2 in the 2nd-row center armrest<sup>1</sup>). Your mobile phone can stay charged with the center console's 12-volt powerpoint, while passengers in back can plug in their portable devices with powerpoints on the back of the center console and in the rear cargo area. Plus, it's comforting to know that a Safety Canopy<sup>®</sup> System with rollover sensor and side-curtain airbags for all outboard passengers is part of 6 standard airbags<sup>2</sup> on Transit Connect Wagon. Safety, after all, is always in style.

SLIDING  3RD-ROW SEATS<sup>1</sup>

HOLDS  UP TO 10

HEATED  FRONT SEATS<sup>1</sup>

*Titanium 7-passenger Wagon. Medium Stone leather trim. Available equipment.*

<sup>1</sup>Available feature. <sup>2</sup>Always wear your safety belt and secure children in the rear seat.

14 TRANSIT CONNECT  
WAGON+VAN  
ford.com





## FUELS YOUR BOUNDLESS ENTHUSIASM.

Transit Connect is the perfect match for high-energy lifestyles. Starting with our turbocharged, direct-injection 1.6L EcoBoost® I-4 engine! It delivers 178 hp,<sup>2</sup> 184 lb.-ft. of torque<sup>2</sup> and a maximum towing capacity of 2,000 lbs.<sup>3</sup> All best in class. Plus, the 1.6L has an EPA-estimated rating of 29 hwy mpg.<sup>4</sup> Twin independent variable camshaft timing (Ti-VCT) emphasizes fuel efficiency or power output as your input demands. To maximize aerodynamic efficiency and maintain ideal EcoBoost engine temperatures, Transit Connect automatically opens and closes its Active Grille Shutters.<sup>1</sup> Both engines, including the standard 2.5L I-4, are mated to a 6-speed SelectShift® automatic transmission for efficient operation. Shift for yourself, or leave it to Transit Connect. Torque Vectoring Control, Curve Control and trailer sway control<sup>1</sup> add additional layers of driving confidence.

**CLASS-BEST**  
EPA-ESTIMATED RATING  **29 MPG HWY<sup>4</sup>**

**CLASS-BEST**  
**2,000 LBS.**  **MAX. TOWING<sup>3</sup>**

**CONTROLS**  **SWAY<sup>1</sup>**

XLT Short Wheelbase Wagon. Solar. Available equipment.

<sup>1</sup>Available feature. <sup>2</sup>Figures achieved using 93-octane premium fuel. <sup>3</sup>When properly equipped. <sup>4</sup>EPA-estimated rating of 22 mpg city/29 mpg hwy/25 combined mpg, 1.6L EcoBoost SWB Wagon. Actual mileage will vary.

**14 TRANSIT CONNECT**  
**WAGON+VAN**  
ford.com





# IMPRESSES ITS MOST DEMANDING CUSTOMERS.

Cab drivers. Fleet operators. Construction site managers. The Built Ford Tough® Transit Connect is certified to meet Ford Light Commercial Vehicle Durability standards. The equivalent of over 3 million miles were covered in arduous testing, including over 250,000 miles in demanding fleet conditions. Structural durability tests ensured Transit Connect would measure up in real-world conditions like stop-and-go taxicab use, constant loading and unloading, and fleet use at airports around the globe. Safety engineering includes a body shell reinforced with high-strength steel, plus AdvanceTrac® with RSC® (Roll Stability Control™)<sup>1</sup> to help keep all 4 wheels planted in slippery conditions. Keeping tough customers happy. That's just part of its job.

ADVANCETRAC



WITH RSC



CURVE CONTROL

SIDE-CURTAIN AIRBAGS



*XL Long Wheelbase Wagon. School Bus Yellow. Taxi Package. Available and aftermarket upfit equipment.*

<sup>1</sup>Remember that even advanced technology cannot overcome the laws of physics. It's always possible to lose control of a vehicle due to inappropriate driver input for the conditions.





## DELIVERS THE GOODS. 24/7.

With the front-passenger seat folded down,<sup>1</sup> Transit Connect Van swallows up to 151.1 cu. ft. of cargo.<sup>2</sup> That's loads of room for whatever you're loading: flowers, cakes, tools or supplies. Access is easy through dual sliding side doors, or through your choice of door in back: 180° swing-out rear cargo doors (great when you have a ladder rack up top) with or without fixed glass,<sup>3</sup> or the ease of a single rear liftgate<sup>3</sup> with fixed glass that's easy to raise and lower (even providing some rain protection when loading). Large exterior panels supply the signage space to showcase your company name and details, so others will quickly know your business. With the room you need to stay on schedule, Transit Connect Van has a huge appetite for work. Get ready to be served.

*XL* Long Wheelbase Van. Dual cargo doors. Frozen White. *XL* Long Wheelbase Van with liftgate. Race Red. Available and aftermarket upfit equipment.

<sup>1</sup>Long-wheelbase model. <sup>2</sup>When properly equipped. Cargo and load capacities limited by weight and weight distribution. <sup>3</sup>Available feature.

14 TRANSIT CONNECT  
WAGON+VAN  
ford.com

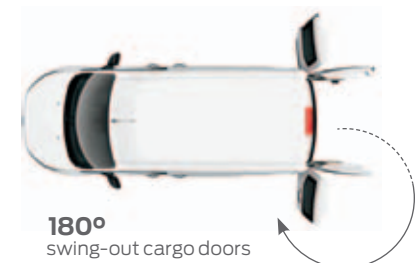
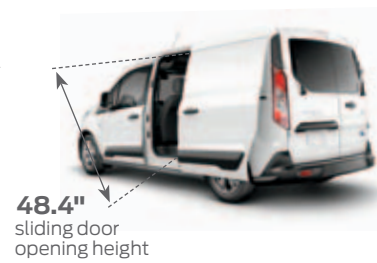
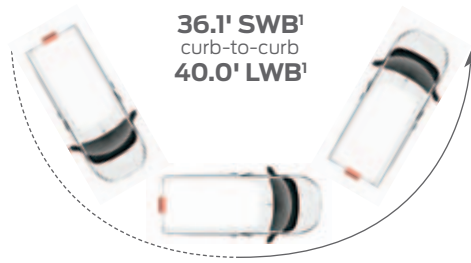




## ALIGNS WITH YOUR LINE OF WORK.

At just over 6' tall, Transit Connect Van easily negotiates parking garages and other low-clearance areas. But don't let its compact size fool you; this Built Ford Tough® truck can handle what you throw at it. Loading and unloading cargo, maneuvering through heavy traffic, and even parallel parking are no problem. Designed with a low load floor height (under 2'), moving things in and out is no sweat. Add in a 36.1' curb-to-curb turning diameter<sup>1</sup> for negotiating tight places, along with a rear view camera<sup>2</sup> and Forward and Reverse Sensing Systems<sup>2</sup> for help in parking, and you've got a vehicle that helps you get more done – each and every day.

<sup>1</sup>Short-wheelbase van. Long-wheelbase van is 40.0'. <sup>2</sup>Available feature.



14 TRANSIT CONNECT  
WAGON+VAN  
ford.com





## MEASURES UP TO BIG EXPECTATIONS.

Starting with a best-in-class maximum payload rating of 1,710 lbs.<sup>1</sup> Behind its comfortable front seats, trimmed in durable vinyl or rugged cloth,<sup>2</sup> Transit Connect Van holds the long, tall and short of your business. There's 151.1 cu. ft. of cargo room to fill with the passenger seat folded down, which means you can carry items up to 4' wide or over 9' long inside.<sup>3</sup>

The flat load floor and near-vertical walls help you make the best use of all that room to transport larger loads, and it's washable for quick cleanup after the work is done. With low side and rear load-floor heights, plus 180° swing-out rear cargo doors, Transit Connect Van performs like your warehouse on wheels.



<sup>1</sup>When properly equipped. Cargo and load capacities limited by weight and weight distribution. <sup>2</sup>Available feature. <sup>3</sup>Long-wheelbase van. <sup>4</sup>Cargo length with passenger seat folded.

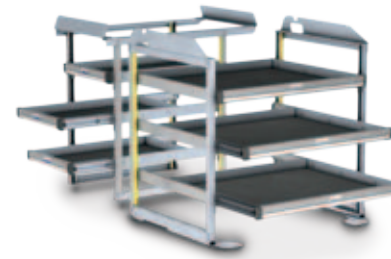




## ENHANCES PRODUCTIVITY. ALWAYS GOOD BUSINESS.

Which Ford Transit Connect is right for you? Van. Wagon. Short or long wheelbase. XL, XLT or Titanium trim. By offering a full lineup of Built Ford Tough® vehicles, Transit Connect sets itself apart with unmatched versatility. A hard worker right from the factory, Transit Connect Van can do even more with easy upfits suitable for your line of work – like the cargo management packages<sup>1</sup> shown here. Durable bulkhead partitions<sup>1</sup> and flexible interior storage systems<sup>1</sup> can help you create a Transit Connect Van that's tailored to you. There's nothing better than that.

<sup>1</sup>Available feature.



**Katerack®**  
by Dejama Cargo & Van Interiors

Dejana offers the Katerack® system of heavy-duty pull-out shelves; standard 6" and 10" shelves; plus trade-ready packages for a wide variety of vocations, including contractors and service technicians.

*Leggett & Platt*  
Commercial Vehicle Interiors

Leggett & Platt CVP offers wire, steel and solid bulkheads; Racks & Bins, QuietFlex® and Cargo Management interior packages; drawer storage cabinets; rooftop ladder racks; utility carriers; and window security systems.



**ADRIAN STEEL**  
Cargo Management Solutions for Commercial Vehicles

Adrian Steel offers wire, steel and hybrid bulkheads; Base, Intermediate, Full and Premium Interior packages; flexible shelving; cargo dividers; drawer units; and literature holders.

**Sortimo®**

Sortimo offers wire mesh and solid bulkheads (with and without a window); Cargo Management; Multi-Purpose Double Floor; Courier Services and Multi-Rack packages; Tufflex Wall Cladding; L-BOXX set; Sliding Platform; Safety Net and a Mobile Tower.



14 TRANSIT CONNECT  
WAGON+VAN  
ford.com





XLT Wagon (Long Wheelbase) in Tectonic Silver customized with keyless entry keypad, side window deflectors, front and rear molded splash guards, 16" aluminum wheels, and roof crossbars and cargo box by THULE<sup>®1</sup>

Rear vehicle: XLT Van (Long Wheelbase) in Frozen White customized with Ford Commercial Graphics by 3M Original Wraps<sup>1</sup>, trailer towing accessories, side window deflectors, front and rear molded splash guards, and 16" aluminum wheels

All-weather floor mats

Remote start systems

Portable DVD rear-seat entertainment system by NextBase<sup>®1</sup>

Trailer hitch assembly

**Exterior**

Ford Custom Graphics by 3M Original Wraps<sup>1</sup>  
Racks and carriers<sup>1</sup>

**Interior**

Ash cup/coin holder  
Cargo organizers and protectors  
Carpeted floor mats  
Interior light kit  
Interior rear window grilles

**Electronics**

Auto-dimming rearview mirror  
Crew Chief™ powered by Telogis<sup>®1</sup>  
Vehicle Security System  
Warning sensor systems<sup>1</sup>



accessories.ford.com

<sup>1</sup>Ford Licensed Accessory.



# TRANSIT CONNECT SPECIFICATIONS

## STANDARD FEATURES



Van (Short Wheelbase)



Van (Long Wheelbase)



Wagon (Short Wheelbase)



Wagon (Long Wheelbase)

### Mechanical

2.5L DOHC I-4 engine
6-speed SelectShift® automatic transmission
Alternator – 150-amp
Battery – 590 Cold Cranking Amps, 60-amp-hr
Battery saver
Electric power-assisted steering
Front-wheel drive (FWD)
Fuel tank – 15.8-gallon
Full-size spare tire
Hill start assist
Suspension – Front: independent MacPherson-strut; rear: twist-beam
Torque Vectoring Control

### Seating

2-passenger seating (Van)
5-passenger seating (SWB Wagon)
7-passenger seating (LWB Wagon)
Front bucket seats
2nd-row 3-passenger 60/40 split folding seat (Wagon)
3rd-row 2-passenger fold-flat seats (LWB Wagon only)

### Interior

12-volt powerpoint – 2 in center console (front and rear) and 1 in rear cargo area (Wagon)
12-volt powerpoint in center console (Van)
Auxiliary audio input jack
Cargo area tie-down hooks (floor-mounted)
Driver's seat rear map pocket (Wagon)
Dual front map lights and rear overhead courtesy lamp (Wagon)
Front doors – Inner door bins with bottle recesses and illuminated window switches
Instrumentation – Speedometer (mph/kph) with tachometer and trip computer
Overhead storage shelf with grab handles (Van)

Power door locks with central locking
Premium front center closable console with 2 cupholders (Wagon)
Rear cargo light (Van)
Rear cupholders – 2 for 2nd row and 2 for 3rd row (Wagon; 3rd-row LWB only)
Remote Keyless Entry System with 2 key fobs
Tilt/telescoping steering column
Windows – Power front with one-touch-down on driver's side (Van)

### Exterior

Bodyside moldings – Gray (Van)
Cargo doors – Rear, 180° swing-out (Van; no 2nd-row glass or rear glass)
Door handles – Black (Van)
Dual sliding side doors (no glass on Van)
Easy Fuel® capless fuel filler
Grille and upper grille bar – Gray (Van)
Halogen headlamps
Headlamp bezels – Black (Van)
Rear liftgate with fixed glass (Wagon)
Wipers – Variable-intermittent front (Van and Wagon) and rear with wash feature (Wagon)

### Safety & Security

AdvanceTrac® with RSC® (Roll Stability Control™) and Curve Control
Airbags¹ – Driver and front-passenger front
Airbags¹ – Front-seat side
Airbags¹ – Side-curtain for 1st row (Van)
Airbags¹ – Side-curtain for all rows (Wagon; SWB Wagon has 1st/2nd rows; LWB Wagon has 1st/2nd/3rd rows)
Brakes – Power 4-wheel disc with Anti-Lock Brake System (ABS)
SecuriLock® Passive Anti-Theft System
Tire Pressure Monitoring System (excludes spare)

## DIMENSIONS

	Van SWB 2-seater	Van LWB 2-seater	Wagon SWB 5-seater	Wagon LWB 7-seater
<b>Exterior</b>				
Wheelbase	104.8"	120.6"	104.8"	120.6"
Length	173.9"	189.7"	173.9"	189.7"
Height	72.5"	72.8"	72.6"	72.0"
Width – Excluding mirrors	72.2"	72.2"	72.2"	72.2"
Width – Including mirrors	84.1"	84.1"	84.1"	84.1"
Width – Mirrors folded	77.4"	77.4"	77.4"	77.4"
Track – Front	61.4"	61.4"	61.4"	61.4"
Track – Rear	61.7"	61.7"	61.7"	61.7"
Overhang – Front	34.6"	34.6"	34.6"	34.6"
Overhang – Rear	34.6"	34.6"	34.6"	34.6"

### Interior (1st/2nd/3rd row)

Head room	46.9"/–/–	46.9"/–/–	46.9"/45.1"/–	46.9"/45.1"/41.3"
Shoulder room	57.7"/–/–	57.7"/–/–	57.7"/58.5"/–	57.7"/58.5"/56.3"
Hip room	54.2"/–/–	54.2"/–/–	54.2"/58.3"/–	54.2"/58.2"/47.0"
Leg room	41.5"/–/–	41.5"/–/–	41.5"/37.6"/–	41.5"/37.6"/35.0"

### Cargo Area

Length – Front at floor	71.5"	87.3"	70.9"	85.8"
Length – Front at belt	61.3"	77.1"	60.9"	76.7"
Length with front-passenger seat folded (Van only)	101.1"	116.9"	–	–
Load height (curb)	23.4"	23.7"	23.5"	22.7"
Side cargo door opening height	48.4"	48.4"	44.9"	44.9"
Side cargo door opening width	24.1"	33.0"	24.1"	33.0"
Rear cargo door opening height	44.0"	44.0"	45.1"	45.1"
Rear cargo door opening width	49.3"	49.3"	47.0"	47.0"
Width between wheelhouses	48.3"	48.3"	47.0"	47.0"
Height max.	49.7"	49.7"	49.0"	42.2"

### Capacities

Passenger volume (cu. ft.)	63.2	63.2	120.7	166.0
Max. towing (lbs.)	2,000	2,000	2,000	2,000
Max. GVWR (lbs.)	5,020	5,270	4,820	5,280
Max. payload (lbs.)	1,560	1,710	1,130	1,270

### Cargo Volume (cu. ft.)

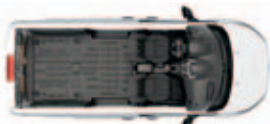
Behind 1st row (with 2nd-row seat folded)	–	–	77.1	104.3
Behind 2nd row	–	–	46.9	58.9
Behind 3rd row (with 3rd-row in design position)	–	–	–	15.9
Behind 3rd row (with 3rd-row seat moved to most forward position)	–	–	–	19.8
Behind 1st row (Van only; no 2nd- or 3rd-row seat)	105.9	130.7	–	–
Maximum with front-passenger seat folded (Van only; without bulkhead)	126.4	151.1	–	–

<sup>1</sup>Always wear your safety belt, secure children in the rear seat and follow airbag warning label instructions. <sup>2</sup>Figures achieved using 93-octane premium fuel.

## CONFIGURATIONS



Van (Short Wheelbase) – Available as XL, XLT



Van (Long Wheelbase) – Available as XL, XLT



Wagon (Short Wheelbase) – Available as XLT



Wagon (Long Wheelbase) – Available as XL, XLT, Titanium

## ENGINES/ EPA-ESTIMATED RATINGS

### 2.5L DOHC I-4

169 hp @ 6,000 rpm
171 lb.-ft. of torque @ 4,500 rpm
6-speed SelectShift automatic transmission
20 city/28 hwy/23 combined mpg (Wagon)
21 city/29 hwy/24 combined mpg (SWB Van)
20 city/28 hwy/23 combined mpg (LWB Van)

### 1.6L EcoBoost® I-4

178 hp @ 5,700 rpm <sup>2</sup>
184 lb.-ft. of torque @ 2,500 rpm <sup>2</sup>
6-speed SelectShift automatic transmission
22 city/29 hwy/25 combined mpg (SWB Wagon)

14 TRANSIT CONNECT  
WAGON • VAN  
ford.com





16" Steel with Styled Wheel Cover Standard

XL Wagon. Charcoal Black cloth!<sup>1</sup> Available equipment.

6-speed SelectShift<sup>®</sup> automatic transmission.

6-way manual driver's seat with recline!<sup>1</sup>

Driver's seat manual lumbar.<sup>1</sup>

## XL VAN

Includes all standard features, plus:

### Configurations

Short Wheelbase – 2-passenger

Long Wheelbase – 2-passenger

### Mechanical

16" steel wheels with styled wheel covers and 215/55R16 all-season tires

### Seating

4-way manual driver's seat with manual recline

4-way manual front-passenger seat with folding back and manual recline

Pewter vinyl seating surfaces

### Interior

AM/FM stereo with 2 speakers

Air conditioning with manual front controls

Flooring – Vinyl front; vinyl liner molded in rear cargo area

Front center console with 2 cupholders

### Exterior

Bumpers – Gray front and rear

Fog lamp bezels – Black

Mirrors – Black sideview, manually adjustable glass, manual folding with integrated blind spot mirrors

Rear bumper end caps in gray

### Available Options

#### Mechanical

1.6L EcoBoost<sup>®</sup> engine with Active Grille Shutters

#### Seating

6-way manual driver's seat with manual lumbar and 4-way manual passenger seat with fold-flat back and manual recline (also available without fold-flat passenger seat)

#### Interior

Rear cargo area light – LED

#### Exterior

Cargo doors – Rear, 180° swing-out with fixed glass

Mirrors – Large sideview (recommended for towing; requires power-adjustable, heated mirrors)

Rear liftgate with fixed glass

Windows – Fixed 2nd-row driver and passenger side (requires 180° swing-out rear cargo doors with fixed glass)

Windows – Fixed 2nd-row passenger side

## XL WAGON

Includes select XL Van features, plus:

### Configurations

Long Wheelbase – 7-passenger

### Seating

6-way manual driver's seat with manual lumbar/recline

### Interior

AM/FM stereo with 4 speakers (2 front, 2 rear)

Air conditioning with manual front and rear control – Includes rear-compartment air conditioning and heater with manual controls (rear-seat climate control on LWB only)

Day/night rearview mirror

Flooring – Vinyl in front, 2nd and 3rd rows, and rear cargo area

Overhead storage shelf with grab handles

Windows – Power front with one-touch-down on driver's side

### Exterior

Bodyside moldings – Gray

Door handles – Black

Grille and upper grille bar – Gray

Headlamp bezels – Black

Rear liftgate with fixed glass (includes power 2nd-row windows and fixed 3rd-row glass)

### Available Package

**Taxi Package** includes AM/FM stereo/single-CD player with 6 speakers (4 front/2 rear), 4.2" LCD multifunctional display, compass display, in-cluster message center, Ford SYNC<sup>®</sup> and rear view camera; manual electric air conditioning; power front windows with one-touch-up/-down; power-adjustable, heated, manual-folding sideview mirrors; recessed 2nd-row seat; 180° swing-out rear cargo doors (includes one-touch-up/-down power 2nd-row windows and fixed 3rd-row/rear-door glass); rear-window defroster; 4 manual keys; and Taxi upfit wiring harness (deletes 3rd-row seating and SecurILock<sup>®</sup> Passive Anti-Theft System; late availability)

### Available Options

#### Interior

Cargo net kit – Vertical (divides seat from cargo area)

Forward Sensing System

Overhead console – Aircraft-style, mid-vehicle (n/a with Taxi Package)

#### Exterior

Cargo doors – Rear, 180° swing-out (includes power 2nd-row windows)

Cornering fog lamps (n/a with Taxi Package)

Roof wiring hole (only available with Taxi Package)

## XL VAN & WAGON

### Available Packages

**CNG/LPG Gaseous Engine Prep Package** (2.5L DOHC engine; late availability)

**Trailer Tow Package** includes Class I trailer hitch receiver, trailer module, 4-pin connector and trailer sway control (n/a with Taxi Package)

### Available Options

#### Mechanical

Engine block heater

Upfitter wiring harness (LWB only; n/a with Taxi Package; late availability)

#### Seating

Charcoal Black cloth seating surfaces

#### Interior

AM/FM stereo/single-CD player (n/a with Taxi Package; requires privacy glass on Wagon)

AM/FM stereo/single-CD player with rear view camera (n/a with Taxi Package; requires privacy glass on Wagon)

AM/FM stereo/single-CD player with SYNC (n/a with Taxi Package; requires cruise control and privacy glass on Wagon)

AM/FM stereo/single-CD player with SYNC and rear view camera (included with Taxi Package; requires cruise control and privacy glass on Wagon)

Cruise control

Key fobs (2 additional; n/a with Taxi Package)

MyKey<sup>®</sup> (requires cruise control; n/a with Taxi Package)

Perimeter alarm (n/a with Taxi Package)

Reverse Sensing System (included with Forward Sensing System on Wagon)

Smoker's Pack – Includes 1 ash cup (n/a with Taxi Package)

#### Exterior

Crew Chief<sup>™</sup> powered by Telogis<sup>®2</sup> – Fleet-tracking system (includes 1 year of subscription service)

Daytime running lamps

Mirrors – Black sideview, power-adjustable glass, heated, manual folding with integrated blind spot mirrors (included with Quickclear<sup>™</sup> electric windshield defroster)

Privacy glass from B-pillar back

Quickclear electric windshield defroster – Includes heated washer jets and power-adjustable, heated sideview mirrors (n/a on Taxi Package)

Rear-window defroster (requires 180° swing-out rear cargo doors with fixed glass; included with Taxi Package)

Splash guards (front and rear)

### Available Fleet-Only Options

3rd-row seats delete (Wagon)

Keyed-alike manual key (one key operates multiple vehicles; requires order of 2 or more vehicles)

Speed limitation – 65-mph governed top speed (n/a with MyKey)

Speed limitation – 75-mph governed top speed (n/a with MyKey)

<sup>1</sup>Available feature. <sup>2</sup>Ford Licensed Accessory.

## XLT



XLT Wagon. Medium Stone cloth. Available equipment.

Integrated blind spot mirror.

SYNC steering wheel controls.<sup>1</sup>

USB port in center console.<sup>1</sup>



16" Steel with Styled Wheel Cover Standard



16" Aluminum with Locking Wheel Lugs Optional



17" Aluminum with Locking Wheel Lugs Optional on Wagon

## XLT VAN

Includes select XL Van features, plus:

### Configurations

Short Wheelbase – 2-passenger

Long Wheelbase – 2-passenger

### Mechanical

16" steel wheels with styled wheel covers and 215/55R16 all-season tires

### Seating

6-way manual driver's seat with manual lumbar/recline  
Charcoal Black or Medium Stone cloth seating surfaces

### Interior

12-volt powerpoint in rear cargo area

4.2" LCD multifunctional display

AM/FM stereo/single-CD player

Cruise control

Door handles – Satin-chrome

Driver and front-passenger sun visors with vanity mirrors; driver's side includes ticket strap

Dual front map lights

Flooring – Carpet in front with carpeted floor mats, vinyl liner molded in rear cargo area

In-cluster message center

MyKey®

Premium front center closable console with 2 cupholders

Steering wheel – Satin-chrome accents

### Exterior

Bumpers – Body-color front, gray rear

Fog lamps with body-color bezels

Mirrors – Black sideview, power-adjustable glass, heated, manual folding with integrated blind spot mirrors

Privacy glass from B-pillar back (included when ordered with 2nd-row glass or fixed rear glass)

Rear bumper end caps in body-color

### Available Package

**CNG/LPG Gaseous Engine Prep Package**  
(2.5L DOHC engine; late availability)

### Available Options

#### Seating

6-way manual driver's seat with manual lumbar and 4-way manual passenger seat (non-fold-flat back) with manual recline

#### Interior

AM/FM stereo/single-CD player with Ford SYNC®

AM/FM stereo/single-CD player with rear view camera

AM/FM stereo/single-CD player with SYNC, SiriusXM Satellite Radio with 6-month trial subscription and HD Radio™ Technology

Flooring – All-weather floor mats (front)

Rear cargo area light – LED

#### Exterior

Cargo doors – Rear, 180° swing-out with fixed glass

Mirrors – Large sideview (recommended for towing)

Rear liftgate with fixed glass

Rear-window defroster (requires 180° swing-out rear cargo doors with fixed glass)

Windows – Fixed 2nd-row driver and passenger side (req. 180° swing-out rear cargo doors with fixed glass)

Windows – Fixed 2nd-row passenger side

## XLT WAGON

Includes select XLT Van features, plus:

### Configurations

Short Wheelbase – 5-passenger

Long Wheelbase – 7-passenger

### Seating

2nd-row 60/40 split-fold seat with folding armrest (includes 2 cupholders)

2nd-row 60/40 removable fold-and-tumble seat (SWB only)

### Interior

AM/FM stereo/single-CD player with 4 speakers and rear view camera

Flooring – Carpet in front (includes carpeted floor mats), 2nd row, 3rd row (LWB), and rear cargo area

In-floor storage (behind front-passenger seat)

Overhead storage shelf with grab handles, sunglasses holder and child observation mirror

Windows – Power front with one-touch-up/-down

### Exterior

Acoustic-laminate windshield

Bodyside moldings – Body-color

Bumpers – Body-color

Door handles – Body-color

Rear liftgate with fixed glass (includes one-touch-up/-down power 2nd-row windows and fixed 3rd-row glass)

Rear-window defroster

### Available Options

#### Mechanical

17" aluminum wheels with locking wheel lugs

#### Seating

6-way power driver's seat with power recline and 4-way manual front-passenger seat with manual recline (both seats include manual lumbar and rear map pockets; requires Medium Stone leather-trimmed seating surfaces)

Medium Stone leather-trimmed seating surfaces

#### Interior

Cargo net kit – Vertical (divides seat from cargo area)

Flooring – All-weather floor mats (front and 2nd row)

Flooring – Black vinyl cargo area

(includes 3rd row on LWB)

Flooring – 2nd-row carpeted floor mats (2-piece kit)

Overhead console – Aircraft-style, mid-vehicle (n/a with panoramic fixed-glass Vista Roof®)

Overhead console – Aircraft-style, rear (SWB; requires panoramic fixed-glass Vista Roof)

Panoramic fixed-glass Vista Roof with power sunshade (includes roof rails; n/a with 180° swing-out rear cargo doors)

#### Exterior

Cargo doors – Rear, 180° swing-out (includes one-touch-up/-down power 2nd-row windows and fixed 3rd-row/rear glass)

Mirrors – Black sideview, power-adjustable glass, heated, power-folding with integrated blind spot mirrors

Roof rack with crossbars

Roof rails

## XLT VAN & WAGON

### Available Package

**Trailer Tow Package** includes Class I trailer hitch receiver, trailer module, 4-pin connector and trailer sway control

### Available Options

#### Mechanical

1.6L EcoBoost® engine with Active Grille Shutters (n/a with LWB Wagon)

Engine block heater

Upfitter wiring harness (LWB only)

16" aluminum wheels with locking wheel lugs

#### Interior

AM/FM stereo/single-CD player with SYNC and rear view camera

AM/FM stereo/single-CD player with SYNC, SiriusXM Satellite Radio with 6-month trial subscription, HD Radio Technology and rear view camera

MyFord Touch® with 6.5" LCD touch screen and rear view camera – Includes AM/FM stereo/single-CD player, Navigation System, SYNC, SiriusXM Satellite Radio with 6-month trial subscription, and HD Radio Technology

Dual-zone electronic automatic temperature control

Flooring – Black vinyl 1st and 2nd rows (requires vinyl cargo area; 2nd row on Wagon only)

Forward Sensing System

Key fobs (2 additional)

Perimeter alarm

Remote Start System

Reverse Sensing System (included with Forward Sensing System)

Smoker's Pack – Includes 1 ash cup

#### Exterior

Automatic headlamps – Wiper-activated with follow-me-home lighting (requires SYNC; Van requires Quickclear™)

Cornering fog lamps

Crew Chief™ powered by Telogis®<sup>2</sup> – Fleet-tracking system (includes 1 year of subscription service)

Daytime running lamps

Quickclear™ electric windshield defroster – Includes heated washer jets and power-adjustable, heated sideview mirrors

Splash guards (front and rear)

### Available Fleet-Only Option

3rd-row seats delete (LWB Wagon)

14 TRANSIT CONNECT  
WAGON-VAN  
ford.com



<sup>1</sup>Available feature. <sup>2</sup>Ford Licensed Accessory.

# TITANIUM WAGON

Includes XLT LWB Wagon features, plus:

## Configurations

Long Wheelbase – 7-passenger

## Mechanical

16" aluminum wheels with locking wheel lugs and 215/55R16 tires

## Seating

6-way power driver's seat with power recline and 4-way manual front-passenger seat with manual recline (both seats include heat, manual lumbar and rear map pockets)

Medium Stone leather-trimmed seating surfaces

## Interior

AM/FM stereo/single-CD player with Ford SYNC®, rear view camera and 6 speakers (4 in front/2 in rear)

Auto-dimming rearview mirror

Compass display

Dual-zone electronic automatic temperature control

Flooring – Front and 2nd-row carpeted floor mats

Leather-wrapped steering wheel and shifter knob

Locking and illuminated glove compartment

## Exterior

Automatic headlamps with chrome bezels; wiper-activated with follow-me-home lighting

Cornering fog lamps

Grille – Gray with chrome surround and chrome upper bar

Mirrors – Body-color sideview, power-adjustable glass, heated, power-folding with integrated blind spot mirrors

Wipers – Rain-sensing front windshield

## Available Package

**Trailer Tow Package** includes Class I trailer hitch receiver, trailer module, 4-pin connector and trailer sway control

## Available Options

### Mechanical

Engine block heater

Upfitter wiring harness

17" aluminum wheels with locking wheel lugs

### Interior

AM/FM stereo/single-CD player with SYNC, SiriusXM Satellite Radio with 6-month trial subscription, HD Radio™ Technology and rear view camera

MyFord Touch® with 6.5" LCD touch screen and rear view camera – Includes AM/FM stereo/single-CD player, Navigation System, SYNC, SiriusXM Satellite Radio with 6-month trial subscription, and HD Radio Technology

Cargo net kit – Vertical (divides seat from cargo area)

Flooring – All-weather floor mats (front and 2nd row)

Forward Sensing System

Key fobs (2 additional)

Overhead console – Aircraft-style, mid-vehicle (late availability; n/a with panoramic fixed-glass Vista Roof®)

Panoramic fixed-glass Vista Roof with power sunshade (includes roof rails; roof rails not included if roof rack is ordered)

Perimeter alarm

Remote Start System

Reverse Sensing System (included with Forward Sensing System)

Smoker's Pack – Includes 1 ash cup

### Exterior

Crew Chief™ powered by Telogis®<sup>1</sup> – Fleet-tracking system (includes 1 year of subscription service)

Daytime running lamps

Quickclear™ electric windshield defroster – Includes heated washer jets and power-adjustable, heated sideview mirrors

Roof rack with crossbars

Roof rails

Splash guards (front and rear)

## Available Fleet-Only Option

3rd-row seats delete



Titanium Wagon. Medium Stone leather trim. Available equipment.

Aircraft-style, mid-vehicle overhead console with storage.<sup>2</sup>

In-floor storage compartment behind front-passenger seat.

Heated front seats.



16" Aluminum with Locking Wheel Lugs Standard



17" Aluminum with Locking Wheel Lugs Optional

<sup>1</sup>Ford Licensed Accessory. <sup>2</sup>Available feature.

# EXTERIORS



Frozen White



Silver Metallic



Tectonic Silver Metallic



School Bus Yellow (Taxi Package)



Solar Metallic



Race Red



Burnished Glow Metallic



Midnight Sky Metallic



Deep Impact Blue Metallic



Dark Blue



Panther Black Metallic

# INTERIORS



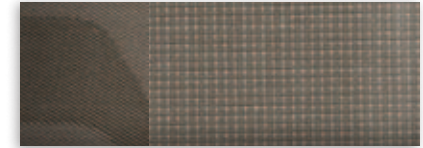
1 Pewter Vinyl



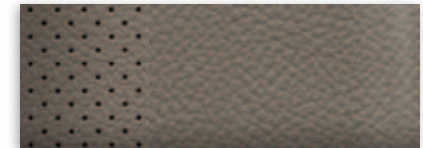
2 Charcoal Black Cloth



3 Charcoal Black Cloth



4 Medium Stone Cloth

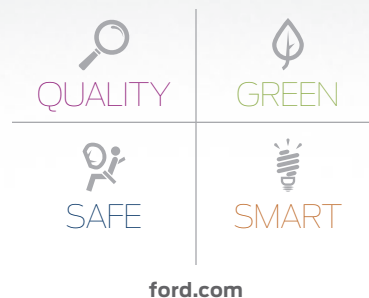


5 Medium Stone Leather<sup>1</sup>

Exteriors	Interiors				
	XL	XLT			TITANIUM
Frozen White	1 2	3 4 5			5
Silver Metallic	1 2	3 4 5			5
Tectonic Silver Metallic <sup>1</sup>	1 2	3 4 5			5
School Bus Yellow <sup>2</sup>	1 2				
Solar Metallic <sup>1</sup>	1 2	3 4 5			5
Race Red	1 2	3 4 5			5
Burnished Glow Metallic <sup>1</sup>	1 2	3 4 5			5
Midnight Sky Metallic	1 2	3 4 5			5
Deep Impact Blue Metallic <sup>1</sup>	1 2	3 4 5			5
Dark Blue	1 2	3 4 5			5
Panther Black Metallic	1 2	3 4 5			5

<sup>1</sup>Available only on Wagon. <sup>2</sup>Available only on Wagon with Taxi Package. Colors are representative only. See your dealer for actual paint/trim options.





**New Vehicle Limited Warranty.** We want your Ford Transit Connect ownership experience to be the best it can be. Under this warranty, your new vehicle comes with 3-year/36,000-mile bumper-to-bumper coverage, 5-year/60,000-mile Powertrain Warranty coverage, 5-year/60,000-mile safety restraint coverage, and 5-year/unlimited-mile corrosion (perforation) coverage – all with no deductible. Please ask your Ford Dealer for a copy of this limited warranty. □ **Roadside Assistance.** Covers your vehicle for 5 years or 60,000 miles, so you have the security of knowing that help may be only a phone call away should you run out of fuel, lock yourself out of the vehicle or need towing. Your Ford Dealer can provide complete details on all of these advantages. □ **Ford Credit.** Get the ride you want. Whether you plan to lease or finance, you'll find the choices that are right for you at Ford Credit. Ask your Ford Dealer for details or check us out at [fordcredit.com](http://fordcredit.com). □ **Ford Extended Service Plan.** For a purchase or lease, the Ford Extended Service Plan (ESP) gives you "Peace-of-Mind" protection designed to cover key vehicle components and protect you from the cost of unexpected repairs. Ask your dealer for a Ford ESP, the only service contract backed exclusively by Ford and honored at all Ford Lincoln dealerships. □ **Insurance Services.** Get Ford Motor Company quality in your auto insurance. Our program offers industry-leading benefits and competitive rates. Call 1-877-367-3847, or visit us at [fordvip.com](http://fordvip.com) for a no-obligation quote. Insurance offered by American Road Services Company (in CA, American Road Insurance Agency), a licensed agency and subsidiary of Ford Motor Company. □ **Genuine Ford Accessories** will be warranted for whichever provides you the greatest benefit: 24 months unlimited mileage, or the remainder of your Bumper-to-Bumper 3-year/36,000-mile New Vehicle Limited Warranty. Ford Licensed Accessories (FLA) are warranted by the accessory manufacturer's warranty. FLA are fully designed and developed by the accessory manufacturer and have not been designed or tested to Ford Motor Company engineering requirements. Contact your Ford Dealer for details and/or a copy of all limited warranties.

Comparisons based on competitive models (class is Small Cargo Vans), publicly available information and Ford certification data at time of release. Some features discussed may be optional. Vehicles shown may contain optional equipment. Features shown may be offered only in combination with other options or subject to additional ordering requirements or limitations. Dimensions shown may vary due to optional features and/or production variability. Following release of the PDF, certain changes in standard equipment, options and the like, or product delays may have occurred which would not be included in these pages. Your Ford Dealer is the best source for up-to-date information. Ford Division reserves the right to change product specifications at any time without incurring obligations. □ HD Radio is a proprietary trademark of iBiquity Digital Corp. □ iHeartAuto is a trademark owned by Clear Channel Broadcasting, Inc. All third party uses are authorized under license. □ iPod and iTunes are trademarks of Apple Inc., registered in the U.S. and other countries. □ Microsoft is a registered trademark of Microsoft Corporation. □ PANDORA, the PANDORA logo, and the PANDORA trade dress are trademarks or registered trademarks of Pandora Media, Inc. Used with permission. □ QuietFlex is a registered trademark of Leggett & Platt Commercial Vehicle Products Company. □ SiriusXM Satellite Radio, SiriusXM Traffic and Travel Link subscriptions sold separately or as a package, and are continuous until you call SiriusXM to cancel. See SiriusXM Customer Agreement for complete terms at [www.siriusxm.com](http://www.siriusxm.com). SiriusXM Traffic and Travel Link available in select markets. For more information, see [www.siriusxm.com/travellink](http://www.siriusxm.com/travellink) or [www.siriusxm.com/traffic](http://www.siriusxm.com/traffic). Sirius, XM and all related marks and logos are trademarks of Sirius XM Radio Inc. □ The Bluetooth word mark is a trademark of the Bluetooth SIG, Inc. □ THULE is a registered trademark of Thule Sweden AB.

Follow Ford:



[facebook.com/fordtrucks](http://facebook.com/fordtrucks)



[twitter.com/fordtrucks](http://twitter.com/fordtrucks)



[youtube.com/fordtrucks](http://youtube.com/fordtrucks)



[gplus.to/FordMotorCompany](http://gplus.to/FordMotorCompany)

