

TRVERSE 2019

CHEVROLET



TRAVERSE HIGH COUNTRY

HIGH COUNTRY ELEVATES ANY EXPERIENCE, PROVIDING ALL THE THINGS YOU KNEW YOU WANTED AND THEN SOME. FEATURES INCLUDE:

UNIQUE HIGH COUNTRY CHROME GRILLE

CHROME ROOF RAILS

SKYSCAPE® DUAL-PANEL SUNROOF

TWIN-CLUTCH ADVANCED ALL-WHEEL DRIVE

20-INCH POLISHED-ALUMINUM WHEELS

INTELLIBEAM® HEADLAMPS

EXCLUSIVE LOFT BROWN/JET BLACK INTERIOR

7-PASSENGER SEATING

HEATED AND VENTILATED FRONT SEATS

HEATED SECOND-ROW SEATS

POWER-FOLDING THIRD-ROW SEAT

ALL THE SAFETY AND CONVENIENCE
FEATURES TRAVERSE OFFERS



Traverse High Country in Iridescent Pearl Tricoat (extra-cost color).

1 High Country shown seats seven. 2 With second- and third-row seats folded flat. Cargo and load capacity limited by weight and distribution. 3 Read the vehicle Owner's Manual for important feature limitations and information.

THE JOURNEY IS AS IMPORTANT AS THE DESTINATION.

Whatever you need to do, and wherever you want to go, the 2019 Traverse has the flexibility to help you get it done.

It starts with a choice of seating for seven or eight¹ and 98.2 cu. ft. of cargo space². It continues when you discover the capability of Traction Mode Select and available switchable all-wheel drive. And finally, a richly refined interior and a stunning exterior create a lasting impression.

With six different trim levels, there's sure to be one that fits your personality. Add in available advanced safety technologies, exceptional connectivity and convenience features, as well as available Surround Vision³ and you'll see Traverse always puts your family first.

FIND NEW ROADS™



TRAVERSE PREMIER

MODERN AND SOPHISTICATED, PREMIER RAISES THE BAR ON WHAT A PREMIUM MIDSIZE SUV CAN BE. THIS TRIM LEVEL INCLUDES:

CHROME-ACCENTED GRILLE WITH CHROME INSERTS

CHROME ROOF RAILS

LED D-OPTIC™ HEADLAMPS

20-INCH ARGENT METALLIC MACHINED-FACE ALUMINUM WHEELS

DUAL-OUTLET EXHAUST WITH RECTANGULAR TIPS

BODY-COLOR LOWER MOLDINGS WITH CHROME INSERTS

HANDS-FREE POWER LIFTGATE

7-PASSENGER SEATING

Traverse Premier in Black Currant Metallic (extra-cost color).

A black Chevrolet Traverse SUV is shown from a front three-quarter view, parked on a paved area at night. The vehicle's headlights are on, and its wheels feature red accents. In the background, there is a building with a large, decorative metal screen featuring an intricate, repeating pattern. The scene is illuminated by ambient light from the building and the car's headlights.

TRAVERSE REDLINE EDITION

WITH BOLD STYLE FOR A STREET-SMART AESTHETIC, THE REDLINE EDITION INCLUDES ALL THE FEATURES OF PREMIER, PLUS:

20-INCH GLOSS BLACK-PAINTED ALUMINUM WHEELS WITH RED ACCENTS

SIGNATURE BLACK AND RED TRAVERSE BADGING

BLACK CHEVROLET BOWTIE EMBLEMS, GRILLE, FOG LAMP BEZELS, WINDOW TRIM, ROOF RAILS AND MORE

DARK TAILLAMPS

SKYSCAPE DUAL-PANEL SUNROOF

TRAILERING EQUIPMENT

Traverse Premier in Mosaic Black Metallic with available Redline Edition.

TRAVERSE RS

THE BOLD, SPORTY RS TURNS HEADS AND ALWAYS STANDS OUT FROM THE CROWD. THIS TRIM LEVEL INCLUDES:

2.0L TURBOCHARGED 4-CYLINDER ENGINE (FWD)

AVAILABLE 3.6L V6 ENGINE (AWD)

20-INCH DARK ANDROID-PAINTED ALUMINUM WHEELS

BLACK CHEVROLET BOWTIE EMBLEMS, GRILLE, FOGLAMP BEZELS, WINDOW TRIM AND ROOF RAILS

JET BLACK LEATHER-APPOINTED SEATING SURFACES

7-PASSENGER SEATING



Traverse RS in Cajun Red Tintcoat (extra-cost color).

TRVERSE LT

WITH A LONG LIST OF STANDARD FEATURES YOUR FAMILY NEEDS, PLUS THE STYLE YOU WANT, TRVERSE LT INCLUDES:

CHROME-ACCENTED GRILLE WITH CHROME INSERTS

BODY-COLOR OUTSIDE MIRRORS WITH LED TURN SIGNAL INDICATORS

FOGLAMPS

18-INCH BRIGHT SILVER-PAINTED ALUMINUM WHEELS

STANDARD 7-PASSENGER OR AVAILABLE 8-PASSENGER SEATING

CLOTH OR LEATHER-APPOINTED SEATING SURFACES AVAILABLE



Traverse LT Leather in Satin Steel Metallic with available 20" machined-face aluminum wheels with Technical Gray pockets.



INTERIOR DESIGN

THE COMFORTS OF HOME.

Traverse High Country Loft Brown leather-appointed interior with Jet Black accents.

GREAT FROM THE WORD “GO.” Traverse aims to impress with all these standard features: Keyless Open and Start, tri-zone automatic climate control, USB ports¹ in all rows, Chevrolet Infotainment System² with a touch-screen display, a theft-deterrent system, and so much connectivity technology you might never want to leave.

THE SEAT OF POWER. LT models and above have an 8-way power driver seat, while LT Leather, Premier and High Country also include a 6-way power front passenger seat. Memory settings for the driver seat, a heated steering wheel and outside heated mirrors are included on Premier and High Country for the ultimate in customized comfort.

A PEACEFUL PLACE. With Active Noise Cancellation, a honed exterior that helps reduce wind noise and numerous other acoustic enhancements, Traverse is a quiet place for a conversation, whether you’re using the hands-free phone function or talking to people in the third row.

¹ Not compatible with all devices. ² Functionality varies by model. Full functionality requires compatible Bluetooth and smartphone, and USB connectivity for some devices.



¹ Does not detect people or items. Always check rear seat before exiting.

Traverse High Country Loft Brown leather-appointed interior with Jet Black accents.

TRAVEL FIRST CLASS. Premier and High Country provide perforated leather-appointed seating surfaces and heated and ventilated front seats, along with a heated steering wheel that helps shake off the chill on cold mornings. Rear passengers haven't been forgotten, with heated seats in the second row.

SEATING FOR 7. OR 8. Seating for eight includes second- and third-row flat-folding 60/40 split-bench seats (standard on L and LS; available on LT; not available on Premier and High Country). Seven-passenger seating includes second-row flat-folding captain's chairs in place of a bench seat (standard on LT models and above).

LT LEATHER. Whether your family needs seating for seven or eight, you can now choose available leather-appointed seating surfaces for the first and second rows.

A TOUCH OF CLASS. Bright finishes such as available Galvano chrome and sophisticated Piano Black accents heighten the interior experience. The perforated leather appointments in both Premier and High Country provide the

luxury you deserve, with High Country adding sueded microfiber accents on the instrument panel and doors.

DON'T FORGET YOUR LAPTOP. Rear Seat Reminder¹ activates when the rear doors are opened and closed up to 10 minutes before or anytime while your vehicle is on, so when you turn off the engine, under certain conditions, you will get a reminder to double-check for valuables left behind.



Traverse Premier Medium Ash Gray interior with Dark Atmosphere accents.

THERE'S ROOM FOR THAT. AND THAT. AND THAT. You get the idea. Traverse offers 98.2 cubic feet¹ of maximum cargo space when you fold the second and third rows virtually flat. And even with all the seats up, Traverse offers 23 cubic feet¹ of cargo space behind the third-row seats.

A PLACE FOR EVERYTHING. You'll need to bring along a whole lot of stuff to fill all the storage spaces in Traverse. There are dedicated spots for cell phones and umbrellas, plus a roomy center console and 10 cup holders.

THIRD-ROW CONVENIENCE. Everything is easy with power-folding third-row seating on High Country. A simple touch of the buttons located in the rear cargo area folds the third row up or down, depending on how you plan to use your Traverse today.

¹ Cargo and load capacity limited by weight and distribution.



1



2



3



4

1. PUT YOUR BEST FOOT FORWARD.

Open and close the hands-free gesture power liftgate by simply using a kicking motion under the rear bumper. LED lighting projects the Chevrolet bowtie so you'll know just where to kick. Standard only on Premier and High Country.

2. FILL IT UP. Traverse offers an abundance of open storage spaces, 24 to be exact, including a front passenger-side pocket that can easily accommodate a tablet.

3. HIDDEN TREASURE. A large underfloor cargo area is easily accessible and is a great place to store valuables, since it's completely out of sight.

4. SLIDE INTO THIRD. The enhanced Smart Slide® second-row seat lets you slide and tilt forward the passenger-side seat for quick and easy access to the spacious third row. You can even leave an unoccupied forward-facing child seat in place – it just has to be properly installed using the LATCH system.

TECHNOLOGY

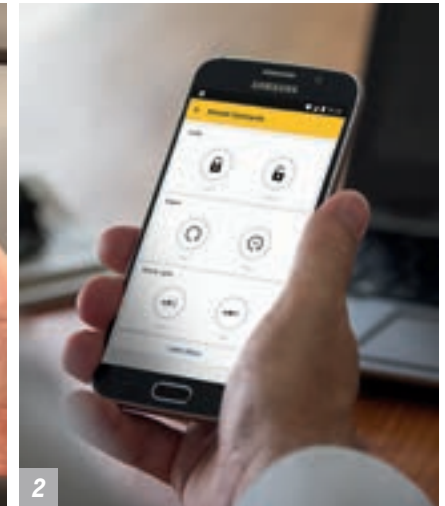
1. Apple CarPlay COMPATIBILITY.

With Apple CarPlay,¹ you can simply and smartly connect with some of your most used iPhone® features, including Maps, Music, Messages and Phone, right on your touch-screen display.

2. **myChevrolet MOBILE APP.**² Simply download the app to your compatible smartphone and if your vehicle is properly equipped, you can start or turn off your engine, lock or unlock your doors³ (requires paid subscription after trial), send destinations to your available navigation⁴ system, view key vehicle diagnostic information, set parking reminders and more. Requires available Remote Access Plan.⁵

3. CONTROL IS AT YOUR FINGERTIPS.

Offering up to four modes, Traction Mode Select lets you adjust performance based on road and surface conditions: FWD for everyday driving, Off-Road on AWD models when you need to send extra torque to the rear wheels, 4x4 (AWD)/Snow (FWD) for better control on slippery surfaces, and Tow/Haul⁶ when pulling a trailer (if properly equipped).



¹ Vehicle user interface is a product of Apple and its terms and privacy statements apply. Requires compatible iPhone and data plan rates apply. ² Available on select Apple and Android devices. Service availability, features and functionality vary by vehicle, device and the plan you are enrolled in. Device data connection required. ³ Requires paid subscription. Services are subject to User Terms and limitations. ⁴ Send-to-Navigation requires subscription. Service varies by vehicle model. Map coverage available in the United States, Puerto Rico and Canada. ⁵ Remote Access Plan does not include emergency or security services. Visit onstar.com for details and limitations. ⁶ Requires available trailering equipment.

Apple CarPlay and iPhone are trademarks of Apple Inc., registered in the U.S. and other countries.

Traverse High Country Loft Brown leather-appointed interior with Jet Black accents.



¹ Not compatible with all devices. ² Chevrolet Infotainment System functionality varies by model. Full functionality requires compatible Bluetooth and smartphone, and USB connectivity for some devices. ³ Visit chevrolet.com/connectivity for more details. ⁴ Service varies with conditions and location. Requires active OnStar service and paid AT&T data plan. Visit onstar.com for details and limitations. ⁵ Vehicle user interface is a product of Google and its terms and privacy statements apply. Requires the Android Auto app on Google Play and an Android compatible smartphone running Android 5.0 Lollipop or higher. Data plan rates apply.

Android, Android Auto, Google, Google Play and other marks are trademarks of Google LLC.

NOW YOU SEE IT. NOW THEY WON'T.

An 8-inch diagonal color touch-screen, standard on LT Leather, RS, Premier and High Country, includes hidden, lockable storage behind the display to stow small valuables out of sight. There's also a USB port¹ for charging your smartphone.

ON-COMMAND CONNECTIVITY.

The Chevrolet Infotainment System² lets you handle calls, play music and easily access contacts from the color touch-screen or through voice commands. With the available 8-inch diagonal color touch-screen, you can browse, select and install apps³ that can help enhance your driving experience.

Wi-Fi IN YOUR TRAVERSE.

Chevrolet offers available built-in 4G LTE Wi-Fi⁴ that provides a better in-vehicle experience than your smartphone. Our strong signal means you have a fast and reliable connection for up to seven devices.

EASY ANDROID CONNECTION.

With Android Auto⁵ compatibility, you can interact with select smartphone apps. This system takes some of your compatible Android[™] phone's features and lets you access them on the touch-screen display. You can access your phone, text messages, music, navigation and more.



SURROUND VISION! This feature can help make parallel parking and maneuvering at low speeds into tight garage spaces easy. That's because you get two views when you look at just one screen. Using four strategically placed cameras, Surround Vision creates a virtual

bird's-eye view of the areas immediately surrounding your Traverse. All camera viewpoints simultaneously merge to transmit a clear side-by-side image to the display screen. Standard on RS models and above. Available on LT Leather.

ONSTAR AUTOMATIC CRASH RESPONSE?

In a crash, built-in sensors can automatically connect you to a specially trained, Emergency Medical Dispatch-certified Advisor³ who can help you get the assistance you need – even

if you can't ask for it. Advisors can use GPS technology to pinpoint your location and request emergency help. OnStar Automatic Crash Response is included in the available OnStar Safety & Security Plan⁴

¹ Safety or driver assistance features are no substitute for the driver's responsibility to operate the vehicle in a safe manner. The driver should remain attentive to traffic, surroundings and road conditions at all times. Visibility, weather and road conditions may affect feature performance. Read the vehicle Owner's Manual for more important feature limitations and information. ² OnStar plan, working electrical system, cell service and GPS signal required. OnStar links to emergency services. ³ OnStar Advisors are certified by the International Academies of Emergency Dispatch. ⁴ Visit onstar.com for system limitations and details. OnStar plan, working electrical system, cell service and GPS signal required. OnStar links to emergency services.



1. REAR CAMERA MIRROR! This technology projects a wide-angle view of the area behind your Traverse. The driver can easily toggle between the mirror surface and a video screen that provides a view without the obstruction of head restraints, rear-seat passengers or cargo. Standard on RS models and above. Available on LT Leather.



2. TEEN DRIVER. Perfect for new drivers, Teen Driver technology helps encourage better driving habits by providing an in-vehicle report card that monitors the frequency of certain available safety tech features that are activated, muting the audio system when front-seat occupants aren't wearing their seat belts, and giving audible and visual warnings when the vehicle is traveling over a predetermined speed.

3. FRONT CENTER SIDE-IMPACT AIRBAG. Traverse continues the use of an industry-first airbag² that deploys from the right side of the driver seat and positions itself between the front seats for added cushioning and restraint to help protect the driver and passenger in the event of a side-impact collision.

¹ Safety or driver assistance features are no substitute for the driver's responsibility to operate the vehicle in a safe manner. The driver should remain attentive to traffic, surroundings and road conditions at all times. Visibility, weather and road conditions may affect feature performance. Read the vehicle Owner's Manual for more important feature limitations and information. ² Sitting too close to an airbag when it deploys can increase the risk of serious injury or death. Always properly wear your seat belt. A NOTE ON CHILD SAFETY: Always use seat belts and the correct child restraint for your child's age and size, even with airbags. Even in vehicles equipped with the Passenger Sensing System, children are safer when properly secured in a rear seat in the appropriate infant, child or booster seat. Never place a rear-facing infant restraint in the front seat of any vehicle equipped with an active frontal airbag. See your vehicle Owner's Manual and the child safety seat instructions for more safety information.

SAFETY

SAFETY STARTS WITH YOU. Safety or driver assistance features are no substitute for the driver's responsibility to operate the vehicle in a safe manner. The driver should remain attentive to traffic, surroundings and road conditions at all times. Visibility, weather and road conditions may affect feature performance. Read the vehicle Owner's Manual for more important feature limitations and information.



WE'RE SERIOUS ABOUT SAFETY.

Protection is good, but prevention is better. Offering advanced safety technologies, Traverse uses available cameras, ultrasonic sensors and radar to detect potential hazards to help you avoid collisions before they happen.



ADAPTIVE CRUISE CONTROL – ADVANCED.

This standard feature on High Country can automatically adapt your cruise control speed in order to maintain a driver-selected following gap to vehicles detected ahead while you steer.



FRONT PEDESTRIAN BRAKING.

At speeds up to 50 mph, a forward-looking camera surveys the road ahead, flashing a warning signal and a series of eight beeps when the vehicle is approaching a pedestrian ahead too fast. If necessary, the available system can even automatically apply last-second braking. Standard on High Country and available on Premier.



FORWARD AUTOMATIC BRAKING.

Using the same radar sensors as Adaptive Cruise Control – Advanced, Forward Automatic Braking can help mitigate collisions or even prevent them at very low speeds. If the system detects an imminent front-end collision, it alerts you and can automatically apply the brakes if you have not already done so. Standard on High Country.



LOW SPEED FORWARD AUTOMATIC BRAKING.

Camera-based Low Speed Forward Automatic Braking can help prevent or mitigate collisions at speeds below 50 mph. Available on Premier.



FORWARD COLLISION ALERT WITH FOLLOWING DISTANCE INDICATOR.

This available feature monitors how close your vehicle is to the vehicle in front of you. If the system determines that a front-end collision with a detected vehicle is imminent, it can alert the driver to a potential crash. It also can warn the driver if their Traverse is following a detected vehicle much too closely. Standard on High Country and available on Premier.



LANE KEEP ASSIST WITH LANE DEPARTURE WARNING.

At speeds above 37 mph, this available camera-based system monitors road lines and will gently turn the steering wheel if the vehicle begins leaving the lane without the use of a turn signal. Standard on High Country and available on Premier.



LANE CHANGE ALERT WITH SIDE BLIND ZONE ALERT.

Radar sensors in the rear corners of the vehicle help detect fast-approaching vehicles in the adjacent lanes as well as moving vehicles in the side mirror blind zones. Amber icons in the exterior mirrors indicate a vehicle's presence. Standard on LT AWD models and above.



REAR CROSS TRAFFIC ALERT.

Using radar sensors, this feature alerts you to crossing vehicles behind your Traverse when backing up. Audible warnings, as well as visual alerts on the rear vision camera screen, are triggered if approaching vehicles are detected. Standard on LT AWD models and above.



REAR VISION CAMERA.

When traveling in Reverse at low speeds, the standard rear vision camera helps provide a real-time view of the area immediately behind your Traverse on the touch-screen display.



REAR PARK ASSIST.

This available feature helps you when backing up by sounding an audible alert and providing visual indication on the rear vision camera display when it detects certain stationary objects in close proximity behind the vehicle. Standard on LT AWD models and above.



INTELLIBEAM HEADLAMPS.

When oncoming headlamps are sensed or when taillamps are detected in front of the vehicle, the available IntelliBeam® high beam assist intuitively adjusts between low and high beams. Standard on High Country and available on Premier.

PERFORMANCE

Traverse Premier in
Black Currant Metallic
(extra-cost color).

310

HORSEPOWER

3.6L

V6 ENGINE

266

LB.-FT. OF TORQUE



3.6L V6 ENGINE. Delivering more than 300 horsepower, our 3.6L V6 provides smooth, effortless performance. And this engine features a number of fuel-saving¹ technologies, such as Variable Valve Timing and Direct Injection, so you don't have to sacrifice efficiency in the name of power. This engine is available on RS AWD and standard on all other models.

2.0L TURBO. Traverse RS front-wheel-drive models have a fun-to-drive 2.0L turbocharged 4-cylinder engine under the hood. With a design that generates up to 20 pounds of boost and virtually eliminates turbo lag, you'll get the full performance benefits of the engine's 257 horsepower and 295 lb.-ft. of torque.

INTELLIGENT STOP/START TECHNOLOGY. In certain conditions, the engine will automatically shut off when the brake is applied and the vehicle comes to a stop. When the brake is released, the engine automatically turns back on. It's a smart way to help save gas² in stop-and-go city driving. It's so seamless, you might not notice it at all.

9-SPEED AUTOMATIC TRANSMISSION. Tuned for smooth shifts and fuel-efficient¹ cruising, the 9-speed automatic transmission is standard on Traverse and perfectly complements the 3.6L V6 and 2.0L turbo engines.

¹ EPA-estimated MPG city/highway: 18/27 (3.6L FWD), 17/25 (3.6L AWD) and 20/26 (2.0L turbo FWD). ² EPA-estimated MPG city: 18 (3.6L FWD), 17 (3.6L AWD) and 20 (2.0L turbo FWD).

Traverse Premier in
Black Currant Metallic
(extra-cost color).

WE'RE REDEFINING "GETAWAY VEHICLE."



¹ Before you buy a vehicle or use it for trailering, carefully review the Trailering section of the Owner's Manual. The weight of passengers, cargo and options or accessories may reduce the amount you can tow. ² EPA-estimated MPG city/highway: 17/25 (3.6L AWD).

TOW UP TO 5,000 LBS! With the 3.6L V6 engine and available factory-installed trailering equipment, you can tow a midsize camper, jet skis, a boat or whatever you need on your next adventure.

TRACTION MODE SELECT. This standard feature offers up to four modes and allows you to adjust performance based on road and surface conditions with the simple turn of the dial – whether you have front-wheel drive or available

all-wheel drive. FWD is your setting for everyday driving and the best fuel efficiency;² Off-Road is only for AWD models and sends more torque to the rear wheels for improved driving on snow, grass, gravel or loose dirt; 4x4 (AWD)/Snow (FWD) helps offer better control when snow and ice make road conditions slippery; and Tow/Haul (if properly equipped) helps keep Traverse in a lower gear, offering more torque when you're pulling a trailer!¹

SWITCHABLE ALL-WHEEL DRIVE.

This available system enhances traction and control on slippery or snow-covered roads. Conveniently, you can leave switchable AWD on year-round, since the rear wheels only engage when the system senses reduced traction. In FWD mode, AWD components completely disengage for greater fuel efficiency.²

TWIN-CLUTCH ALL-WHEEL DRIVE.

High Country offers an advanced twin-clutch all-wheel-drive system that helps improve driver control by

independently directing torque to the wheel with the best traction in poor road conditions. This helps give the driver superior control as well as a confident feeling behind the wheel.

HANDLING IS A HIGH POINT. The current Traverse is up to 300 pounds lighter than the previous generation. Plus, it features variable-assist Electric Power Steering and a 5-link independent rear suspension. All that adds up to an SUV with a tight turning circle and light, nimble steering that helps you feel more connected to the road.

SPECIAL FEATURES



Bright Roof Rack Cross Rail Package
available from Chevrolet Accessories.



Rear-Seat Infotainment System
available with or without DVD player
from Chevrolet Accessories.



Available SkyScape dual-panel sunroof.



Premium All-Weather Floor Liners
available from Chevrolet Accessories.

WHEELS



18" Bright Silver-Painted Aluminum (Standard on L, LS and LT)



20" Machined-Face Aluminum with Technical Gray Pockets
(Available on LT Leather)



20" Dark Android-Painted Aluminum (Standard on RS)



20" Argent Metallic Machined-Face Aluminum (Standard on Premier)



20" Gloss Black-Painted Aluminum with Red Accents
(Available on Premier with Redline Edition)



20" Polished-Aluminum (Standard on High Country)

COLORS



SUMMIT WHITE



IRIDESCENT PEARL TRICOAT^{1,2}



SATIN STEEL METALLIC³



SILVER ICE METALLIC³



GRAPHITE METALLIC⁴



PEPPERDUST METALLIC⁵

¹ Not available on L or LS. ² Extra-cost color. ³ Not available on L. ⁴ Not available on L, LS or High Country. ⁵ Not available on L, LS, RS or High Country.

COLORS (CONTINUED)



HAVANA BROWN METALLIC¹



CAJUN RED TINTCOAT^{2,3}



BLACK CURRANT METALLIC^{3,4}



MOSAIC BLACK METALLIC

¹ Not available on L, LS or RS. ² Not available on L or LS. ³ Extra-cost color. ⁴ Not available on L, LS, RS or High Country.

FABRICS



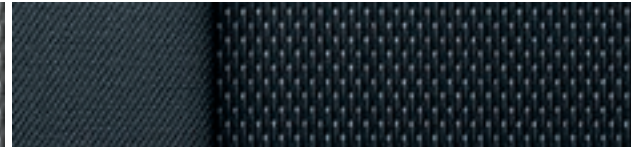
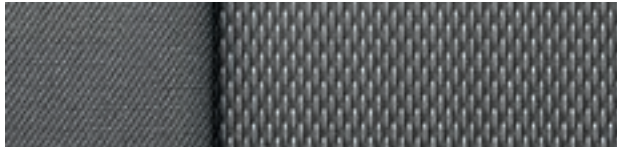
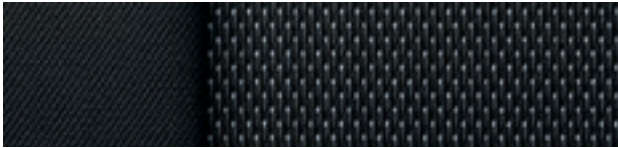
Jet Black Premium Cloth with Jet Black Accents¹



Medium Ash Gray Premium Cloth with Dark Atmosphere Accents²



Dark Galvanized Premium Cloth with Jet Black Accents^{2,3}



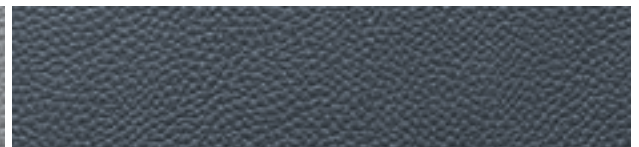
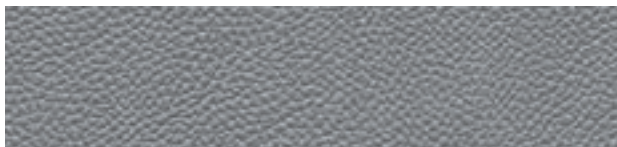
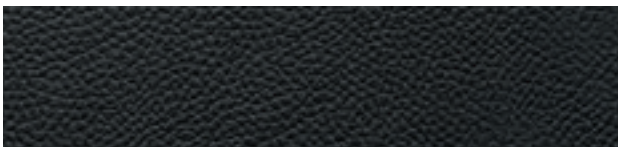
Jet Black Leather Appointments with Jet Black Accents⁴



Medium Ash Gray Leather Appointments with Dark Atmosphere Accents⁵



Dark Galvanized Leather Appointments with Jet Black Accents^{3,5}



¹ Standard on L, LS and LT Cloth. ² Standard on LT Cloth. ³ Not available with Pepperdust Metallic, Havana Brown Metallic or Black Currant Metallic exterior colors. ⁴ Standard on LT Leather. Required with RS. ⁵ Standard on LT Leather.

FABRICS (CONTINUED)



Jet Black Perforated Leather Appointments with Jet Black Accents¹



Medium Ash Gray Perforated Leather Appointments with Dark Atmosphere Accents²



Dark Galvanized Perforated Leather Appointments with Jet Black Accents^{2,3}



Loft Brown Premium Perforated Leather Appointments with Jet Black Accents⁴



¹ Standard on Premier. Required with Redline Edition. ² Standard on Premier. ³ Not available with Pepperdust Metallic, Havana Brown Metallic or Black Currant Metallic exterior colors. ⁴ Standard on High Country.

SELECT VEHICLE FEATURES

TRAVERSE L

3.6L V6 engine with stop/start technology
9-speed automatic transmission
Dual-outlet exhaust with round tips
Traction Mode Select
StabiliTrak® Electronic Stability Control System with Traction Control
Frontal and side-impact airbags ¹ for driver and front passenger, includes Passenger Sensing System; driver inboard seat-mounted side-impact airbag; and head-curtain airbags for all rows in outboard seating positions
Tire Pressure Monitoring System with Tire Fill Alert ²
OnStar Safety & Security Plan ³ with 1-month coverage, including Automatic Crash Response, Emergency Services, Stolen Vehicle Assistance, Roadside Assistance and Turn-by-Turn Navigation
LATCH (Lower Anchors and Tethers for Children) system for child safety seats
Teen Driver technology
Rear vision camera ⁴
LED daytime running lamps
High-intensity discharge (HID) headlamps
Outside heated power-adjustable manual-folding Black mirrors
Black bodyside moldings and rocker moldings
Body-color door handles
Compact spare tire
Chevrolet Infotainment System ⁵ with 7-inch diagonal color touch-screen, AM/FM stereo, Bluetooth® audio streaming ⁶ and Android Auto™ ⁷ and Apple CarPlay™ ⁸ compatibility
Bluetooth wireless technology ⁶ for select phones
Six USB ports ⁹
Driver Information Center with 3.5-inch diagonal monochromatic display
Compass with digital display
Keyless Open and Start
Steering wheel-mounted controls for audio, phone and cruise
Power windows with driver and front passenger express-down
Tri-zone automatic climate control with individual climate settings for driver, front passenger and rear seats
Interior lighting with theater dimming, cargo light, reading lights for front seats, second-row reading lamps and door- and tailgate-activated switches

TRAVERSE L (CONTINUED)

8-passenger seating with Premium Cloth seating surfaces
10 cup holders
Rear Seat Reminder ¹⁰
Built-in 4G LTE Wi-Fi® ¹¹ for up to seven devices, includes data trial for 1 month or 3 GB (whichever comes first)

TRAVERSE LS In addition to or replacing L features, LS includes:

Deep-tinted glass
Outside heated power-adjustable manual-folding body-color mirrors with turn signal indicators
Foglamps
Roof rails
SiriusXM® Radio ¹² All Access Package with 3-month trial subscription
7-passenger seating with second-row captain's chairs
8-way power driver seat with power lumbar control
Leather-wrapped steering wheel
Power windows with driver express-up/-down and front passenger express-down

TRAVERSE LT CLOTH (1LT) In addition to or replacing LS features, LT Cloth includes:

Outside heated power-adjustable manual-folding body-color mirrors with turn signal indicators
Foglamps
Roof rails
SiriusXM® Radio ¹² All Access Package with 3-month trial subscription
7-passenger seating with second-row captain's chairs
8-way power driver seat with power lumbar control
Leather-wrapped steering wheel
Power windows with driver express-up/-down and front passenger express-down
Outside heated power-adjustable manual-folding body-color mirrors with turn signal indicators and driver-side auto-dimming feature
Body-color moldings with chrome inserts and chrome door handles
Hands-free power rear liftgate with Chevrolet emblem projection
Memory for power driver seat, outside mirror and steering column settings
Power tilt and telescopic steering column
Heated steering wheel and heated second-row captain's chairs
Perforated leather-appointed seating with ventilated driver and front passenger seats
Wireless charging for devices ¹³

TRAVERSE LT LEATHER (3LT) In addition to or replacing LT Cloth features, LT Leather includes:

Lane Change Alert with Side Blind Zone Alert ⁴ and Rear Cross Traffic Alert ⁴
Rear Park Assist ⁴ with audible warning
Power rear liftgate with programmable height adjustment
Remote vehicle starter system
Chevrolet Infotainment System ⁵ with 8-inch diagonal color touch-screen with motorized power up/down and hidden storage
Enhanced Driver Information Center with 4.2-inch diagonal multi-color display
Leather-appointed seating surfaces
6-way power front passenger seat with power lumbar control
Heated driver and front passenger seats
Universal Home Remote programmable transmitter

TRAVERSE RS In addition to or replacing LT Leather features, RS includes:

2.0L turbocharged 4-cylinder engine
Surround Vision ⁴ with bird's-eye view (includes rear vision camera)
Signature Black accents including Black roof rails, Black bowtie emblems, Gloss Black window trim, and Black Ice front grille and foglamp bezels
Inside rearview auto-dimming Rear Camera Mirror with full camera display
120-volt power outlet on rear of center console
Chevrolet Infotainment System ⁵ with Navigation and 8-inch diagonal color touch-screen with motorized power up/down and hidden storage
Bose® premium 10-speaker sound system with RichBass™ woofer in center console

TRAVERSE PREMIER

In addition to or replacing LT Leather features, Premier includes:

Dual-outlet exhaust with rectangular tips
LED D-Optic™ bi-function projector-beam headlamps
Outside heated power-adjustable manual-folding body-color mirrors with turn signal indicators and driver-side auto-dimming feature
Body-color moldings with chrome inserts and chrome door handles
Hands-free power rear liftgate with Chevrolet emblem projection
Memory for power driver seat, outside mirror and steering column settings
Power tilt and telescopic steering column
Heated steering wheel and heated second-row captain's chairs
Perforated leather-appointed seating with ventilated driver and front passenger seats
Wireless charging for devices ¹³

TRAVERSE HIGH COUNTRY

In addition to or replacing Premier features, High Country includes:

All-wheel-drive system and automatic locking rear differential with twin clutch
Trailer equipment: Heavy-duty cooling system and trailer hitch
IntelliBeam automatic high beam assist
Forward Collision Alert ⁴ and Following Distance Indicator ⁴
Front Pedestrian Braking ⁴
Lane Keep Assist with Lane Departure Warning ⁴
Adaptive Cruise Control – Advanced ⁴ and Forward Automatic Braking ⁴
SkyScape power tilt-sliding sunroof and fixed rear skylight with sunscreen
Power-folding third-row 60/40 split-bench seat

1 A NOTE ON CHILD SAFETY: Always use seat belts and the correct child restraint for your child's age and size, even with airbags. Even in vehicles equipped with the Passenger Sensing System, children are safer when properly secured in a rear seat in the appropriate infant, child or booster seat. Never place a rear-facing infant restraint in the front seat of any vehicle equipped with an active frontal airbag. See your vehicle Owner's Manual and the child safety seat instructions for more safety information.

2 Excludes spare tire. **3** Visit onstar.com for limitations and details. OnStar plan, working electrical system, cell service and GPS signal required. OnStar links to emergency services. Roadside service provided by Allstate Roadside Services. Stolen Vehicle Assistance requires armed factory-installed theft-deterrent system. **4** Read the vehicle Owner's Manual for important feature limitations and information. **5** Chevrolet Infotainment System functionality varies by model. Full functionality requires compatible Bluetooth and smartphone, and USB connectivity for some devices. Map coverage available in the United States, Puerto Rico and Canada. **6** Visit my.chevrolet.com/learnAbout/bluetooth to find out which phones are compatible with the vehicle. **7** Vehicle user interface is a product of Google and its terms and privacy statements apply. Requires the Android Auto app on Google Play and an Android compatible smartphone running Android 5.0 Lollipop or higher. Data plan rates apply. **8** Vehicle user interface is a product of Apple and its terms and privacy statements apply. Requires compatible iPhone and data plan rates apply. **9** Not compatible with all devices. **10** Does not detect people or items. Always check rear seat before exiting. **11** Service varies with conditions and location. Requires active OnStar service and paid AT&T data plan. Visit onstar.com for details and limitations. **12** If you decide to continue service after your trial, the subscription plan you choose will automatically renew thereafter and you will be charged according to your chosen payment method at then-current rates. Fees and taxes apply. To cancel you must call SiriusXM at 1-866-635-2349. See SiriusXM Customer Agreement for complete terms at siriusxm.com. All fees and programming subject to change. **13** The system wirelessly charges one PMA- or Qi-compatible mobile device. Some devices require an adaptor or back cover. To check for phone or other device compatibility, visit my.chevrolet.com/learn for details.

SPECIFICATIONS

● STANDARD ○ AVAILABLE – NOT AVAILABLE

	L/LS	LT CLOTH (1LT)	LT LEATHER (3LT)	RS	PREMIER	HIGH COUNTRY
EXTERIOR						
Headlamps: High-intensity discharge LED D-Optic bi-function projector-beam	●	●	●	●	–	–
Liftgate: Rear, manual	●	○ ¹	–	–	–	–
Power, programmable height	–	○	●	●	–	–
Power, hands-free, with Chevrolet emblem projection	–	–	–	–	●	●
Mirrors: Heated, power-adjustable, manual-folding, Black	●	–	–	–	–	–
Heated, power-adjustable, manual-folding, body-color, with turn signal indicators	–	●	●	●	–	–
Heated, power-adjustable, manual-folding, body-color, with turn signal indicators and driver-side auto-dimming feature	–	–	–	–	● ²	●
Roof rails	–	●	●	●	●	●
Sunroof: SkyScene, power tilt-sliding front; fixed rear skylight with sunscreen	–	–	○ ³	○ ⁴	○ ⁵	●
ENGINE/CHASSIS						
Engine: 3.6L DOHC V6 with Direct Injection; 310 horsepower and 266 lb.-ft. of torque	●	●	●	○ ⁴	●	●
2.0L turbocharged 4-cylinder with SIDI and Variable Valve Timing; 257 horsepower and 295 lb.-ft. of torque (FWD models)	–	–	–	●	–	–
Engine control: Stop/start system	●	●	●	●	●	●
Transmission: 9-speed automatic	●	●	●	●	●	●
All-wheel-drive system	○ ⁶	○	○	○	○	● ⁷
Traction Mode Select	●	●	●	●	●	●
Trailer equipment: Heavy-duty cooling system and trailer hitch	–	○	○	○ ⁴	○ ⁵	●

	L/LS	LT CLOTH (1LT)	LT LEATHER (3LT)	RS	PREMIER	HIGH COUNTRY
SAFETY & SECURITY						
Airbags: ⁸ Frontal and side-impact for driver and front passenger, driver inboard seat-mounted side-impact, and head-curtain for all rows in outboard seating positions	●	●	●	●	●	●
Brakes: 4-wheel antilock disc	●	●	●	●	●	●
Forward Automatic Braking ⁹	–	–	–	–	–	●
Forward Collision Alert ⁹ and Following Distance Indicator ⁹	–	–	–	–	○ ¹⁰	●
Lane Keep Assist with Lane Departure Warning ⁹	–	–	–	–	○ ¹⁰	●
Low Speed Forward Automatic Braking ⁹	–	–	–	–	○ ¹⁰	–
Rear Park Assist ⁹	–	○ ¹	●	●	●	●
Lane Change Alert with Side Blind Zone Alert ⁹ and Rear Cross Traffic Alert ⁹	–	○ ¹	●	●	●	●
Teen Driver technology	●	●	●	●	●	●
INTERIOR						
Climate control: Tri-zone automatic, individual climate settings for driver, front passenger and rear seats	●	●	●	●	●	●
Driver Information Center: 3.5-inch diagonal monochromatic display	●	○ ¹¹	–	–	–	–
4.2-inch diagonal enhanced multi-color display	–	○ ¹	●	●	●	●
Rear vision camera ⁹	●	●	●	–	–	–
Rear Camera Mirror: ⁹ Inside rearview auto-dimming with full camera display	–	–	○ ¹²	●	●	●

	L/LS	LT CLOTH (1LT)	LT LEATHER (3LT)	RS	PREMIER	HIGH COUNTRY
INTERIOR (CONTINUED)						
Surround Vision ⁹ with bird's-eye view	–	–	○ ¹²	●	●	●
Rear Seat Reminder ¹³	●	●	●	●	●	●
Remote vehicle starter system	–	○ ¹	●	●	●	●
Steering wheel: Urethane comfort grip with mounted audio, phone and cruise controls	●	–	–	–	–	–
Leather-wrapped with mounted audio, phone and cruise controls	–	●	●	●	●	●
Heated	–	–	–	–	●	●
Universal Home Remote: Programmable	–	○ ¹	●	●	●	●
SEATING						
8-passenger: Second- and third-row flat-folding 60/40 split-bench seats	●	○	○	–	–	–
7-passenger: Second-row flat-folding captain's chairs and third-row flat-folding 60/40 split-bench seat	–	●	●	●	●	●
Heated seats: Driver and front passenger	–	○ ¹	●	●	●	●
Second-row captain's chairs	–	–	–	–	●	●
Ventilated seats: Driver and front passenger	–	–	–	–	●	●
Power-folding third-row 60/40 split-bench seat	–	–	–	–	–	●
Premium Cloth	●	●	–	–	–	–
Leather-appointed first and second rows (perforated inserts on Premier; premium perforated inserts on High Country)	–	–	●	●	●	●
Seat adjuster: Driver 8-way power with power lumbar control	–	●	●	●	●	●
Front passenger 6-way power with power lumbar control	–	–	●	●	●	●

¹ Requires available Convenience and Driver Confidence Package on FWD models. Standard on AWD models. ² Mirrors are Black with available Redline Edition. ³ Requires available LT Premium Package. ⁴ Requires available AWD. ⁵ Requires available Driver Confidence II Package on FWD models. Included with available Redline Edition. ⁶ Not available on L. ⁷ Includes automatic locking rear differential with twin clutch. ⁸ A NOTE ON CHILD SAFETY: Always use seat belts and the correct child restraint for your child's age and size, even with airbags. Even in vehicles equipped with the Passenger Sensing System, children are safer when properly secured in a rear seat in the appropriate infant, child or booster seat. Never place a rear-facing infant restraint in the front seat of any vehicle equipped with an active frontal airbag. See your vehicle Owner's Manual and the child safety seat instructions for more safety information. ⁹ Read the vehicle Owner's Manual for important feature limitations and information. ¹⁰ Requires available Driver Confidence II Package on FWD models. Standard on AWD models. ¹¹ FWD models only. ¹² Requires available LT Premium Package. ¹³ Does not detect people or items. Always check rear seat before exiting.

SPECIFICATIONS (CONTINUED)

	L/LS	LT CLOTH (1LT)	LT LEATHER (3LT)	RS	PREMIER	HIGH COUNTRY
ENTERTAINMENT						
Chevrolet Infotainment System ¹ with 7-inch diagonal color touch-screen, AM/FM stereo, Bluetooth audio streaming, ² and Android Auto ³ and Apple CarPlay ⁴ compatibility	●	●	-	-	-	-
Chevrolet Infotainment System ¹ with 8-inch diagonal color touch-screen with motorized power up/down and hidden storage, includes features listed above	-	○ ⁵	●	-	-	-
Chevrolet Infotainment System ¹ with Navigation and 8-inch diagonal color touch-screen	-	-	○ ⁵	●	●	●
Bose premium 10-speaker sound system with RichBass woofer in center console	-	-	○ ⁶	●	●	●
WHEELS						
18" Bright Silver-painted aluminum	●	●	●	-	-	-
20" machined-face aluminum with Technical Gray pockets	-	-	○ ⁶	-	-	-
20" Dark Android-painted aluminum	-	-	-	●	-	-
20" Argent Metallic machined-face aluminum	-	-	-	-	●	-
20" Gloss Black-painted aluminum with Red accents	-	-	-	-	○ ⁷	-
20" polished-aluminum	-	-	-	-	-	●

● STANDARD ○ AVAILABLE - NOT AVAILABLE

	L/LS	LT CLOTH (1LT)	LT LEATHER (3LT)	RS	PREMIER	HIGH COUNTRY
PACKAGES						
Convenience and Driver Confidence Package	-	○ ⁸	● ⁹	● ⁹	-	-
Lane Change Alert with Side Blind Zone Alert; ¹⁰ Rear Cross Traffic Alert; ¹⁰ Rear Park Assist; ¹⁰ Chevrolet Infotainment System ¹ with 8-inch diagonal color touch-screen with motorized power up/down and hidden storage, Driver Information Center with enhanced multi-color display, heated front seats, Universal Home Remote, remote vehicle starter system and power rear liftgate						
LT Premium Package	-	-	○ ¹¹	●	-	-
Chevrolet Infotainment System ¹ with Navigation, Bose premium 10-speaker sound system, Rear Camera Mirror; ¹⁰ Surround Vision ¹⁰ and 120-volt power outlet						
Driver Confidence II Package	-	-	-	-	○ ⁸	-
Low Speed Forward Automatic Braking; ¹⁰ Forward Collision Alert; ¹⁰ Lane Keep Assist with Lane Departure Warning; ¹⁰ Following Distance Indicator; ¹⁰ Front Pedestrian Braking ¹⁰ and IntelliBeam headlamps						
Redline Edition	-	-	-	-	○ ¹²	-
20" Gloss Black-painted aluminum wheels with Red accents; Black Traverse badges with Red outline; Black bowtie emblems, roof rails, mirror caps and door handles; Gloss Black window surround; Black-painted rocker and wheel openings with Black Ice inserts; Black Ice grille, license plate applique and foglamp bezels; dark taillamps; SkyScape dual-panel sunroof; and trailering equipment						

¹ Chevrolet Infotainment System functionality varies by model. Full functionality requires compatible Bluetooth and smartphone, and USB connectivity for some devices. Map coverage available in the United States, Puerto Rico and Canada. ² Visit my.chevrolet.com/learnAbout/bluetooth to find out which phones are compatible with the vehicle. ³ Vehicle user interface is a product of Google and its terms and privacy statements apply. Requires the Android Auto app on Google Play and an Android compatible smartphone running Android 5.0 Lollipop or higher. Data plan rates apply. ⁴ Vehicle user interface is a product of Apple and its terms and privacy statements apply. Requires compatible iPhone and data plan rates apply. ⁵ Requires available Convenience and Driver Confidence Package on FWD models. Standard on AWD models. ⁶ Requires available LT Premium Package. ⁷ Requires available Redline Edition. ⁸ Standard on AWD models. ⁹ Chevrolet Infotainment System is replaced with Chevrolet Infotainment System with Navigation. ¹⁰ Read the vehicle Owner's Manual for important feature limitations and information. ¹¹ Includes 20" machined-face aluminum wheels with Technical Gray Pockets. ¹² Requires available Driver Confidence II Package on FWD models. Available with Iridescent Pearl Tricoat, Silver Ice Metallic, Summit White or Mosaic Black Metallic exterior colors.



CHEVROLET

COMPLETE CARE

Experience Chevrolet Complete Care, a comprehensive coverage, warranty and protection program that comes standard with every new 2019 Chevrolet Traverse lease and purchase. Simply, it is designed around you, to make it easy to keep your Chevrolet like new – and give you the confidence you deserve when you need it most.

YOUR COMPREHENSIVE OWNER BENEFIT PROGRAM.

Includes one maintenance visit (oil change, tire rotation and multi-point vehicle inspection)¹

5 years/60,000 miles of Roadside Assistance and Courtesy Transportation²

3-year/36,000-mile Bumper-to-Bumper Limited Warranty²

5-year/60,000-mile Powertrain Limited Warranty²

6 years/100,000 miles of Rust-Through Protection²

10 years of standard connectivity with Chevrolet Connected Access³

1-month trial of Chevrolet Connected Services⁴ and 1 month of OnStar Safety & Security Plan coverage.⁴

DIMENSIONS

Length	204.3"	Width	78.6"	Head Room (front/2nd row/3rd row)	41.3"/40.0"/38.2"
Wheelbase	120.9"	Front Track	67.3"	Leg Room (front/2nd row/3rd row)	41.0"/38.4"/33.5"
Height	70.7"	Rear Track	67.0"	Shoulder Room (front/2nd row/3rd row)	62.1"/62.2"/57.5"

MAXIMUM CAPACITIES

EPA-ESTIMATED FUEL ECONOMY

3.6L V6 FWD	18 MPG city/27 highway/21 combined
3.6L V6 AWD	17 MPG city/25 highway/20 combined
2.0L turbo FWD	20 MPG city/26 highway/22 combined

FUEL TANK (APPROXIMATE) 19.4 gallons (FWD); 21.7 gallons (AWD)

TRAILER WEIGHT RATING⁵ 5,000 lbs.

SEATING Seats 7/8

CARGO VOLUME⁶ (CUBIC FEET)
Behind third-row seat: 23.0
Behind second-row seat: 57.8
Behind first-row seats: 98.2

OWNERSHIP EXTRAS

CHEVROLET



CHEVROLET.COM/WARRANTY

CHEVROLET



CHEVROLET.COM/ACCESSORIES



ONSTAR.COM

(SiriusXM)

SIRIUSXM.COM

NEW VEHICLE LIMITED WARRANTY

3-YEAR/36,000-MILE BUMPER-TO-BUMPER LIMITED WARRANTY Chevrolet will warrant each 2019 Traverse from bumper to bumper for 3 years/36,000 miles (whichever comes first; see dealer for details), with no deductible, from the original in-service date of the vehicle, for warrantable repairs that are required as a result of defects due to materials and/or workmanship. Cosmetic corrosion resulting from defects is also covered under the Bumper-to-Bumper Limited Warranty. In addition, rust-through corrosion will be covered for 6 years/100,000 miles (whichever comes first). See dealer for details.

5-YEAR/60,000-MILE TRANSFERABLE POWERTRAIN LIMITED WARRANTY Every 2019 Traverse comes with a 5-year/60,000-mile (whichever comes first) transferable Powertrain Limited Warranty. 24/7 Roadside Assistance and Courtesy Transportation are also offered for the duration of the Powertrain Limited Warranty. Please see your Chevrolet dealer for details.

¹ Maintenance visit must occur within first year of vehicle delivery. Service visit consists of ACDelco dexos1™ Full Synthetic Oil and Filter Change/Tire Rotation/MPVI. Does not include air filters. See participating dealer for other restrictions and complete details. ² Whichever comes first. See dealer for details. ³ Standard connectivity available only to original purchaser for 10 years. Connected Access services are subject to change. Does not include safety services. Visit onstar.com for details and plan limitations. ⁴ Connected Services include navigation services and Remote Access Plan, and 1 month/3 GB of 4G LTE data (whichever comes first) from vehicle delivery date. Services are subject to User Terms and limitations. Certain services require working electrical system, cell service and GPS signals. OnStar links to emergency services. Visit onstar.com for more details. ⁵ Before you buy a vehicle or use it for trailering, carefully review the Trailering section of the Owner's Manual. The weight of passengers, cargo and options or accessories may reduce the amount you can tow. ⁶ Cargo and load capacity limited by weight and distribution.

IMPORTANT INFORMATION

CHEVROLET CONNECTED SERVICES AND ONSTAR Effective May 1, 2018, available Chevrolet Connected Services have changed significantly. While many of the offered services are the same, available plans and pricing are different. Connected vehicle services require a paid connected vehicle services plan or trial and connected hardware, vehicle electrical system (including battery), wireless service and GPS satellite signals to be available and operating for features to function properly. OnStar acts as a link to existing emergency service providers. Visit onstar.com for coverage map, details and system limitations.

CHEVROLET OWNER CENTER (MY.CHEVROLET.COM) Everything you need to know. Anything you need to do. Your Chevrolet Owner Center makes it easy. Create your account today to get the most out of your new vehicle. Get special alerts and offers, schedule service, review your maintenance schedule, and view how-to videos specifically for your vehicle. All online, anytime. Visit the Owner Center today to register or take a tour.

ENGINES Chevrolet products are equipped with engines produced by GM Global Propulsion Systems or other suppliers to GM worldwide. The engines in Chevrolet products may also be used in other GM makes and models.

ASSEMBLY Chevrolet vehicles and their components are assembled or produced by different operating units of General Motors, its subsidiaries or suppliers to GM worldwide. We sometimes find it necessary to produce Chevrolet vehicles with different or differently sourced components than originally scheduled. Since some options may be unavailable when your vehicle is assembled, we suggest you verify that your vehicle includes the equipment you ordered and that, if there were changes, they are acceptable to you.

A NOTE ON CHILD SAFETY Always use seat belts and the correct child restraint for your child's age and size, even with airbags. Even in vehicles equipped with the Passenger Sensing System, children are safer when properly secured in a rear seat in the appropriate infant, child or booster seat. Never place a rear-facing infant restraint in the front seat of any vehicle equipped with an active frontal airbag. See your vehicle Owner's Manual and the child safety seat instructions for more safety information.

IMPORTANT WORDS ABOUT THIS CATALOG We have tried to make this catalog comprehensive and factual. We reserve the right, however, to make changes at any time, without notice, in prices, colors, materials, equipment,

specifications, models and availability. Specifications, dimensions, measurements, ratings and other numbers in this catalog and other printed materials provided at the dealership or affixed to vehicles are approximations based on design and engineering drawings, prototypes and laboratory tests. Your vehicle may differ due to variations in manufacture and equipment. Since some information may have been updated since the time of printing, please check with your Chevrolet dealer for complete details. Chevrolet reserves the right to lengthen or shorten the model year for any product for any reason or to start and end model years at different times. Certain vehicle features may lose their usefulness over time due to obsolescence from technological changes. Unless otherwise noted, all claims based on GM Mid-SUV Crossover segment and latest available competitive information. Excludes other GM vehicles.

FLEET ORDERS Some standard content may be deleted on fleet orders. See dealer for details.

CHEVROLET OWNERSHIP EXPERIENCE Chevrolet is committed to enhancing the vehicle shopping and ownership experience through a wide array of programs. Visit chevrolet.com to build and price, find a vehicle, request a quote, compare vehicles, find financial tools or track your vehicle order. You'll also find information about 24-hour Roadside Assistance, Courtesy Transportation, Customer Assistance, GM Mobility, safety and current incentives.

CHEVROLET.COM/SAFETY Chevrolet is committed to keeping you and your family safe – from the start of your journey to your destination. That's why every Chevrolet is designed with a comprehensive list of safety and security features to help give you peace of mind.

GMMOBILITY.COM (1-800-323-9935) GM MobilitySM offers financial assistance for eligible adaptive equipment to make automotive travel easier for persons with disabilities or special transportation needs. To learn more about special GM Mobility offers, visit gmmobility.com.

THE BUYPOWER CARD The Chevrolet BuyPower Card – Every purchase you make with the BuyPower Card from Capital One* helps you earn toward an eligible new Chevrolet, Buick, GMC or Cadillac vehicle. There's no limit on the amount you can earn or redeem, and your Earnings don't expire. Visit chevroletbuypowercard.com/catalogs.

* Capital One, N.A. is the issuer of the BuyPower Card. General Motors ("GM") is responsible for the operation and administration of the Earnings program.



TWITTER.COM/CHEVROLET



YOUTUBE.COM/CHEVROLET



FACEBOOK.COM/CHEVROLET



INSTAGRAM.COM/CHEVROLET

GM, the GM logo, Chevrolet, the Chevrolet logo, and the slogans, emblems, vehicle model names, vehicle body designs and other marks appearing in this catalog are the trademarks and/or service marks of General Motors, its subsidiaries, affiliates or licensors. ©2018 OnStar LLC. All rights reserved. Sirius, XM, SiriusXM and all related marks and logos are trademarks of Sirius XM Radio Inc. The Bluetooth word mark is a registered trademark owned by Bluetooth SIG, Inc., and any use of such mark by Chevrolet is under license. Bose is a registered trademark and RichBass is a trademark of the Bose Corp. ©2018 General Motors. All rights reserved. July 2018



FIND NEW ROADS™

CHEVROLET.COM