

Presenting
Pinin Farina's Latest
The Exciting New 1953
Wash Rambler



The Car Designed for Today's Traffic



PININ FARINA
of TURIN, ITALY

America's Smartest Compact Custom Car Styled by the World's Foremost Custom Car Designer!



NEW, WIDE WINDSHIELD—25 per cent more glass area—gives you a better view of the road ahead. Weather Eye air intake at cowl level assures fresh, clean air, scooped in *above* level of gases from cars ahead.



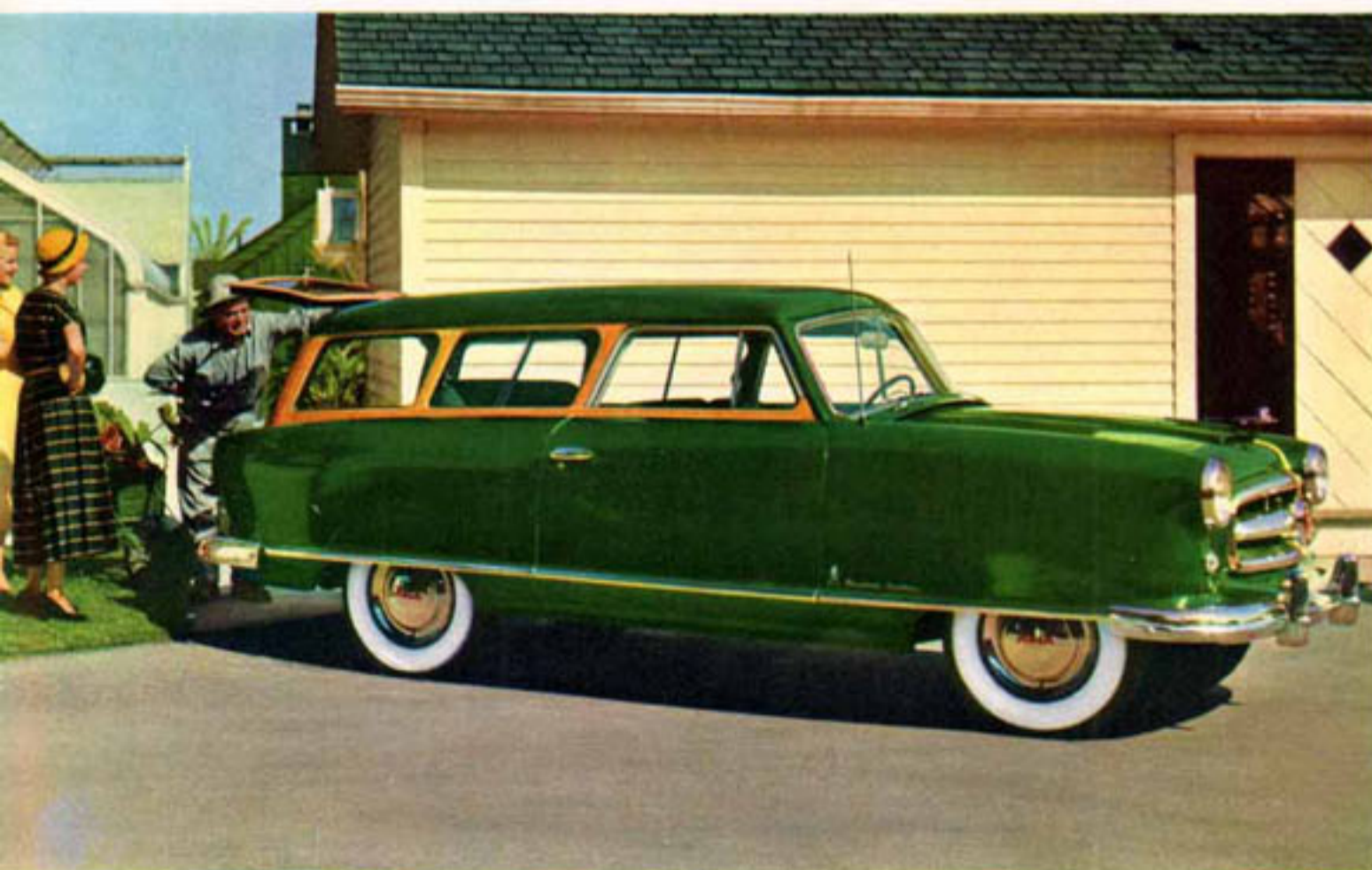
YOU'VE NEVER KNOWN SUCH COMFORT as you'll enjoy with the Airliner Reclining Seat, now available on the Nash Rambler. It adjusts to any of four comfortable positions. Relax, even doze if you like, while someone else drives.



FROM THE SALONS OF PARIS Madame Hélène Rother, famed Parisian decorator, has chosen a rainbow of new colors and patterns in rich fabrics and genuine leathers to give custom elegance second to none. The striking blue needlepoint and blue-striped grey homespun combination is shown above.



SMARTEST, SAFEST CONVERTIBLE in the world, this new Nash Rambler gives you all the thrill of the open car with sedan comfort—with the protection of exclusive Nash Airflyte Construction and steel girder rails overhead. Electrically-operated top that glides into place at the mere touch of a button.



DOUBLE YOUR MONEY'S WORTH with the All-Purpose Station Wagon that's both a luxury sedan and practical utility car. Best of all, with double-rigid Airflyte Construction, it's rattleproof! The rear seat folds down flush with the floor to provide over 6 feet of carrying space. Enhancing the beauty of the continental-style hood is the new optional hood ornament created by George Petty, famous artist.

Yes, you loved it before—now it will take your breath away!

See it! America's first compact custom car—the new idea in motoring that stole the hearts of millions—now completely new—now even smarter, gayer—now even more fun to drive!

Look at the Nash Rambler now!

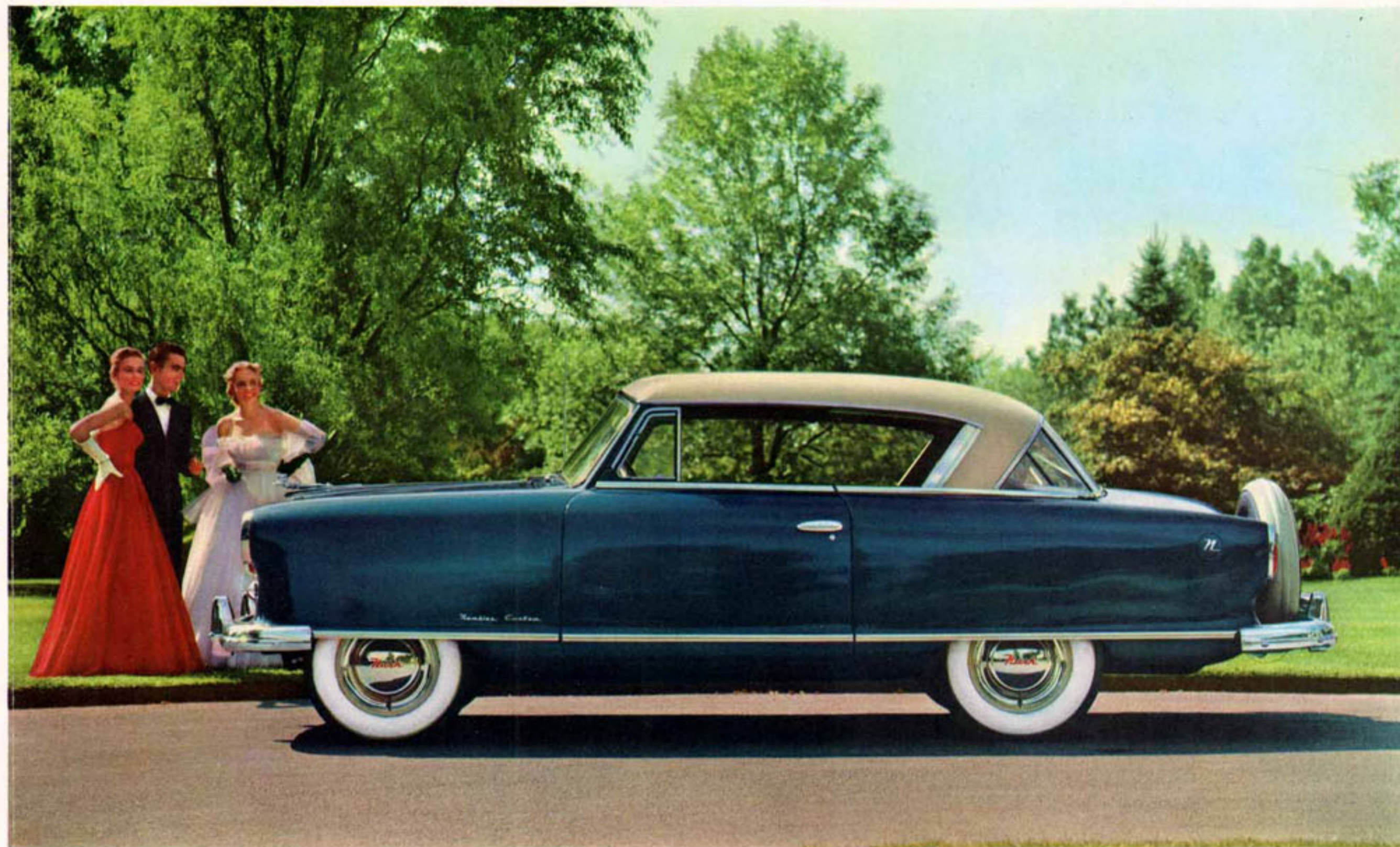
Look at the daring new continental styling of Pinin Farina. Look at the wider, deeper windshield—the low hood with its functional air scoop . . . the new higher "Road-Guide" fenders . . . the long, sweeping rear fenders . . . the distinctive new Continental rear tire mount.

Now the Nash Rambler's Super Flying Scot engine offers even better performance . . . increased power with the same amazing fuel economy for which the Nash Rambler is famous.

You enjoy a host of luxurious accessories at *no extra cost* in the Rambler custom models—radio, Weather Eye Conditioned Air System, two-tone upholstery, foam-rubber seat cushions, directional signals—even the smart new Continental rear tire mount is included in the price of the Country Club and Convertible models.

And you still haven't heard half the wonderful news about the car specially engineered for today's traffic conditions. You must see and drive the new Nash Rambler yourself. Discover the handling and parking ease of America's newest, smartest compact custom car. Learn for yourself why *there's none so new as Nash!*

LOOK AT THE BEAUTIFUL NEW instrument panel that brings every driving knob and dial in easy reach of hand or eye. There's a big glove drawer, too, for maps and other necessities. It pulls out instead of "spilling out." Exquisite custom upholstery combinations in needlepoint and vinyl leather are standard.



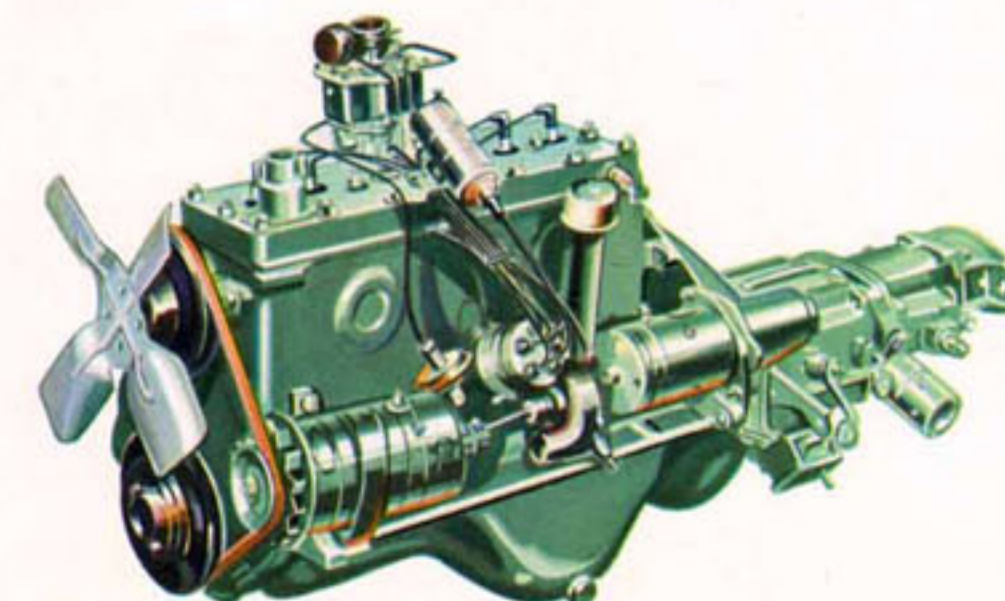
NOW YOU CAN OWN A PININ FARINA-STYLED "hardtop convertible" at the price of a Rambler—the new 1953 Rambler Country Club. And with Continental rear tire mount (standard on Custom

Country Club and Convertible models) you get space for two extra suitcases in the luggage compartment. Deep, wide side windows drop completely out of sight for real "open-air" fun.

THE SUPER *Flying Scot* ENGINE

**A CHOICE OF 3 TRANSMISSIONS . . . INCLUDING
DUAL-RANGE HYDRA-MATIC DRIVE**

Now the Rambler's Super Flying Scot engine offers even flashier performance . . . increased power with no sacrifice in traditional fuel economy. This year, for the first time, you have a choice of three transmissions including Dual-Range Hydra-Matic Drive. Whichever transmission you choose, you'll enjoy "jack rabbit" pick-up in traffic . . . effortless cruising on the open highway.



Two Smart All-Purpose Sedans for Family or Business Use!

NASH RAMBLER "GREENBRIER"

This two-tone beauty distinguishes any company. The smart upholstery selections blend with the exterior color combinations. The rear seat lowers flush with the floor—as in the Custom Station Wagon model—to provide a load carrying platform over six feet long.

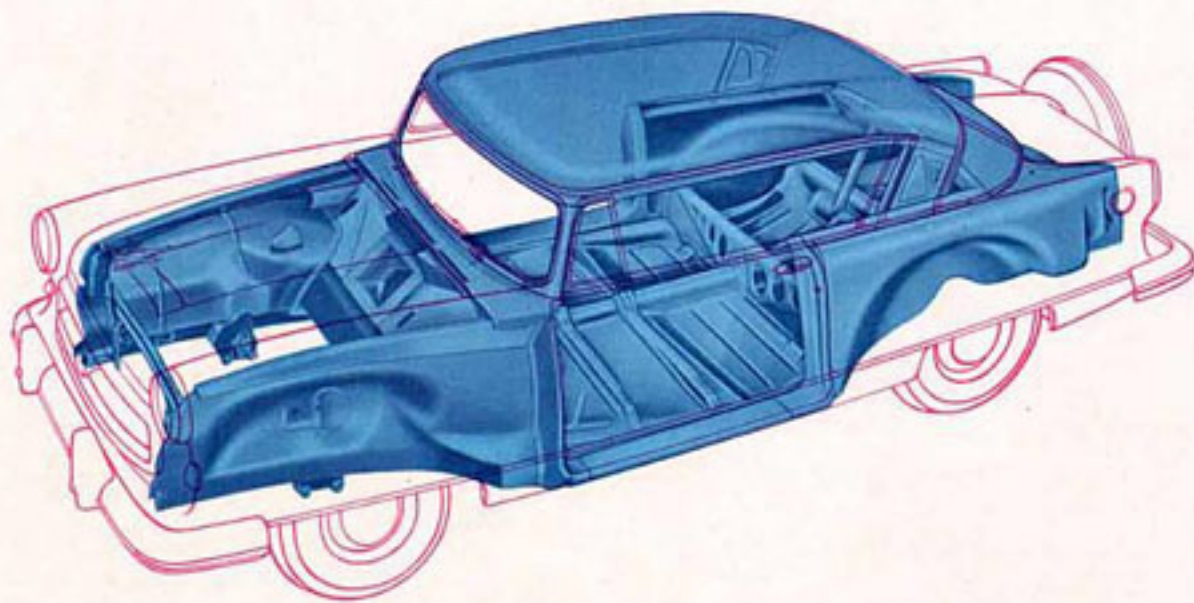


NASH RAMBLER "SUBURBAN"

America's most practical utility car . . . smart in appearance . . . economical to operate. Front seat accommodates three passengers. Rear seat lowers for additional load capacity. Available in wide choice of solid body covers.

EXCLUSIVE *Nash* AIRFLYTE CONSTRUCTION

Like all Nash cars, the Rambler is built the new and better way—with exclusive Airflyte Construction termed the greatest advance in automotive construction in more than a half-century. Body-and-frame are one integral unit—stronger, safer, twice as rigid and lastingly free of body-bolt squeaks and rattles. Airflyte Construction makes possible the use of Nash Advanced Airflex Front Suspension that sets new standards for riding comfort and handling ease. Extra long coil springs cushion road shocks and help give Rambler passengers the finest ride ever.



1953 *Nash Rambler* SPECIFICATIONS

BODY: Exclusive Airflyte Construction—All models. Fully Bonderized for rust protection. Wheelbase, 100 in. Overall length, 178½ in. Overall length with Continental rear tire mount, 185¾ in. Width 73½ in. Loaded height, 59 in. Front tread 53¾ in., rear 53 in. Road clearance 7¼ in. at rear axle.

MECHANICAL: L-head, 6 cylinder, Super Flying Scot engine, 184 cu. in., 85 HP, 7.25 compression ratio. Hydra-Matic equipped cars have 195.6 cu. in. engine with 90 HP and 7.3:1 compression ratio. Uniflo-Jet YF type carbu-

retor, Integral Iso-Thermal intake manifold. New "High-Lift" camshaft. Four ring pistons with U-Flex lower oil control ring. Airflex front suspension. Coil springs at front, semi-elliptic rear springs. Hotchkiss type drive. Three transmission choices: Dual-Range Hydra-Matic, Automatic Overdrive, Standard Syncromesh. Super cushion tires, 6.40 x 15 standard on Custom models; 5.90 x 15 on others. 20 gal. fuel tank.

EQUIPMENT: Custom models shown include as standard equipment, Continental rear tire

mount on Custom Country Club and Convertible models, Weather Eye Conditioned Air System, radio, custom steering wheel and upholstery, foam cushions, directional signals, electric clock, courtesy lights, chrome wheel discs. Suburban is available with Weather Eye and radio as standard equipment. Extra cost equipment includes Dual-Range Hydra-Matic, Automatic Overdrive, Airliner Reclining Seats, special leather-and-needlepoint trim on Country Club and Convertible Sedan models, Solex glass, white sidewall tires, and Petty Hood ornament.

NASH MOTORS, DIVISION OF NASH-KELVINATOR CORP., DETROIT, MICH., RESERVES THE RIGHT TO MAKE CHANGES AT ANY TIME, WITHOUT NOTICE, IN SPECIFICATIONS, PRICES OF MODELS, AND ALSO TO DISCONTINUE MODELS.